

Data Path : Z:\voasrv\HPCHEM1\MSVOA_W\Data\VW082622\
 Data File : VW024358.D
 Acq On : 26 Aug 2022 18:40
 Operator : SY/VA
 Sample : N4344-14MS
 Misc : 5.48g/10mL/MSVOA_W/SOIL
 ALS Vial : 1 Sample Multiplier: 1

Instrument :
 MSVOA_W
 ClientSampleId :
 DBVR2MS

Manual Integrations
 APPROVED

Reviewed By :Semsettin Yesilyurt 08/30/2022
 Supervised By :Mahesh Dadoda 08/30/2022

Quant Time: Aug 27 00:42:44 2022
 Quant Method : Z:\voasrv\HPCHEM1\MSVOA_W\Method\SFAMWLM082622SMA.M
 Quant Title : SFAM01.0
 QLast Update : Sat Aug 27 00:35:21 2022
 Response via : Initial Calibration

Compound	R.T.	QIon	Response	Conc	Units	Dev(Min)
Internal Standards						
1) 1,4-Difluorobenzene	8.841	114	191895	25.000	ug/L	0.00
28) Chlorobenzene-d5	11.628	117	197487	25.000	ug/L	0.00
58) 1,4-Dichlorobenzene-d4	13.554	152	127830	25.000	ug/L	0.00
System Monitoring Compounds						
4) Vinyl Chloride-d3	2.343	65	160409	30.325	ug/L	0.00
Spiked Amount	25.000	Range 30 - 150	Recovery =	121.280%		
7) Chloroethane-d5	2.873	69	126100	31.817	ug/L	0.00
Spiked Amount	25.000	Range 30 - 150	Recovery =	127.280%		
11) 1,1-Dichloroethene-d2	4.013	63	98061	21.375	ug/L	0.00
Spiked Amount	25.000	Range 45 - 110	Recovery =	85.480%		
21) 2-Butanone-d5	7.080	46	51141	52.489	ug/L	0.00
Spiked Amount	50.000	Range 20 - 135	Recovery =	104.980%		
24) Chloroform-d	7.647	84	149866	24.292	ug/L	0.00
Spiked Amount	25.000	Range 40 - 150	Recovery =	97.160%		
26) 1,2-Dichloroethane-d4	8.305	65	95612	25.556	ug/L	0.00
Spiked Amount	25.000	Range 70 - 130	Recovery =	102.240%		
32) Benzene-d6	8.275	84	270230	23.882	ug/L	0.00
Spiked Amount	25.000	Range 20 - 135	Recovery =	95.520%		
36) 1,2-Dichloropropane-d6	9.274	67	87192	24.778	ug/L	0.00
Spiked Amount	25.000	Range 70 - 120	Recovery =	99.120%		
41) Toluene-d8	10.323	98	258437	24.022	ug/L	0.00
Spiked Amount	25.000	Range 30 - 130	Recovery =	96.080%		
43) trans-1,3-Dichloroprop...	10.579	79	41636	25.284	ug/L	0.00
Spiked Amount	25.000	Range 30 - 135	Recovery =	101.120%		
47) 2-Hexanone-d5	10.920	63	47994	60.947	ug/L	0.00
Spiked Amount	50.000	Range 20 - 135	Recovery =	121.900%		
56) 1,1,2,2-Tetrachloroeth...	12.688	84	116993	29.365	ug/L	0.00
Spiked Amount	25.000	Range 45 - 120	Recovery =	117.480%		
66) 1,2-Dichlorobenzene-d4	13.853	152	123166	25.586	ug/L	0.00
Spiked Amount	25.000	Range 75 - 120	Recovery =	102.360%		
Target Compounds						
2) Dichlorodifluoromethane	2.001	85	43762	22.769	ug/L	98
3) Chloromethane	2.215	50	79515	22.143	ug/L	100
5) Vinyl chloride	2.349	62	168921	26.910	ug/L	100
6) Bromomethane	2.763	94	110825	25.152	ug/L	95
8) Chloroethane	2.910	64	89512	27.297	ug/L	100
9) Trichlorofluoromethane	3.245	101	52676	17.845	ug/L	100
10) 1,1,2-Trichloro-1,2,2-...	4.050	101	58160	20.542	ug/L	99
12) 1,1-Dichloroethene	4.037	96	46379	20.234	ug/L	90
13) Acetone	4.129	43	26524	45.618	ug/L	97
14) Carbon disulfide	4.379	76	154075	20.226	ug/L	97
15) Methyl Acetate	4.672	43	30742	21.613	ug/L	97
16) Methylene chloride	4.909	84	64118m	19.923	ug/L	
17) trans-1,2-Dichloroethene	5.415	96	54663	20.148	ug/L	96
18) Methyl tert-butyl Ether	5.427	73	97446	21.936	ug/L	96
19) 1,1-Dichloroethane	6.214	63	104082	20.288	ug/L	98
20) cis-1,2-Dichloroethene	7.165	96	63752m	21.368	ug/L	
22) 2-Butanone	7.177	43	48235	46.497	ug/L	100
23) Bromochloromethane	7.506	128	30762	21.115	ug/L	92
25) Chloroform	7.677	83	118359	20.793	ug/L	90

Data Path : Z:\voasrv\HPCHEM1\MSVOA_W\Data\VW082622\
 Data File : VW024358.D
 Acq On : 26 Aug 2022 18:40
 Operator : SY/VA
 Sample : N4344-14MS
 Misc : 5.48g/10mL/MSVOA_W/SOIL
 ALS Vial : 1 Sample Multiplier: 1

Instrument :
 MSVOA_W
 ClientSampleId :
 DBVR2MS

Manual Integrations
 APPROVED

Reviewed By :Semsettin Yesilyurt 08/30/2022
 Supervised By :Mahesh Dadoda 08/30/2022

Quant Time: Aug 27 00:42:44 2022
 Quant Method : Z:\voasrv\HPCHEM1\MSVOA_W\Method\SFAMWLM082622SMA.M
 Quant Title : SFAM01.0
 QLast Update : Sat Aug 27 00:35:21 2022
 Response via : Initial Calibration

Compound	R.T.	QIon	Response	Conc	Units	Dev(Min)
27) 1,2-Dichloroethane	8.396	62	91646	22.119	ug/L	97
29) Cyclohexane	7.951	56	85497	20.081	ug/L	98
30) 1,1,1-Trichloroethane	7.866	97	91709	19.697	ug/L	99
31) Carbon tetrachloride	8.067	117	81275	19.081	ug/L	99
33) Benzene	8.323	78	254993	20.738	ug/L	100
34) Trichloroethene	9.091	95	61389	18.943	ug/L	93
35) Methylcyclohexane	9.335	83	101323	19.487	ug/L	99
37) 1,2-Dichloropropane	9.366	63	65551	20.658	ug/L #	97
38) Bromodichloromethane	9.640	83	89225	20.648	ug/L	97
39) cis-1,3-Dichloropropene	10.073	75	95298	21.485	ug/L	99
40) 4-Methyl-2-pentanone	10.207	43	113806	50.438	ug/L	98
42) Toluene	10.384	91	308224	22.715	ug/L	98
44) trans-1,3-Dichloropropene	10.603	75	94399	21.902	ug/L	94
45) 1,1,2-Trichloroethane	10.786	97	55991	21.638	ug/L	96
46) Tetrachloroethene	10.859	164	155968	61.970	ug/L	95
48) 2-Hexanone	10.969	43	85161	51.169	ug/L	99
49) Dibromochloromethane	11.128	129	65786	21.495	ug/L	92
50) 1,2-Dibromoethane	11.231	107	54612	21.953	ug/L	93
51) Chlorobenzene	11.658	112	193320	21.226	ug/L	98
52) Ethylbenzene	11.731	91	339653	22.640	ug/L	98
53) m,p-Xylene	11.835	106	134188	22.776	ug/L	96
54) o-Xylene	12.164	106	129345	23.485	ug/L	98
55) Styrene	12.182	104	251315	25.814	ug/L	96
57) 1,1,2,2-Tetrachloroethane	12.713	83	85655	23.716	ug/L	99
59) Bromoform	12.347	173	42458	20.697	ug/L	98
60) Isopropylbenzene	12.463	105	361597	21.298	ug/L	98
61) 1,2,3-Trichloropropane	12.768	75	61185	21.166	ug/L	97
62) 1,3,5-Trimethylbenzene	12.938	105	293980	21.474	ug/L	99
63) 1,2,4-Trimethylbenzene	13.249	105	296544	22.301	ug/L	100
64) 1,3-Dichlorobenzene	13.499	146	159555	19.656	ug/L	94
65) 1,4-Dichlorobenzene	13.572	146	169530	19.781	ug/L	98
67) 1,2-Dichlorobenzene	13.871	146	162287	21.328	ug/L	98
68) 1,2-Dibromo-3-chloropr...	14.481	75	14800	20.378	ug/L	92
69) 1,3,5-Trichlorobenzene	14.627	180	97705	18.648	ug/L	95
70) 1,2,4-trichlorobenzene	15.127	180	77756	19.091	ug/L	97
71) Naphthalene	15.365	128	179353	20.051	ug/L	98
72) 1,2,3-Trichlorobenzene	15.554	180	67642	17.572	ug/L	91

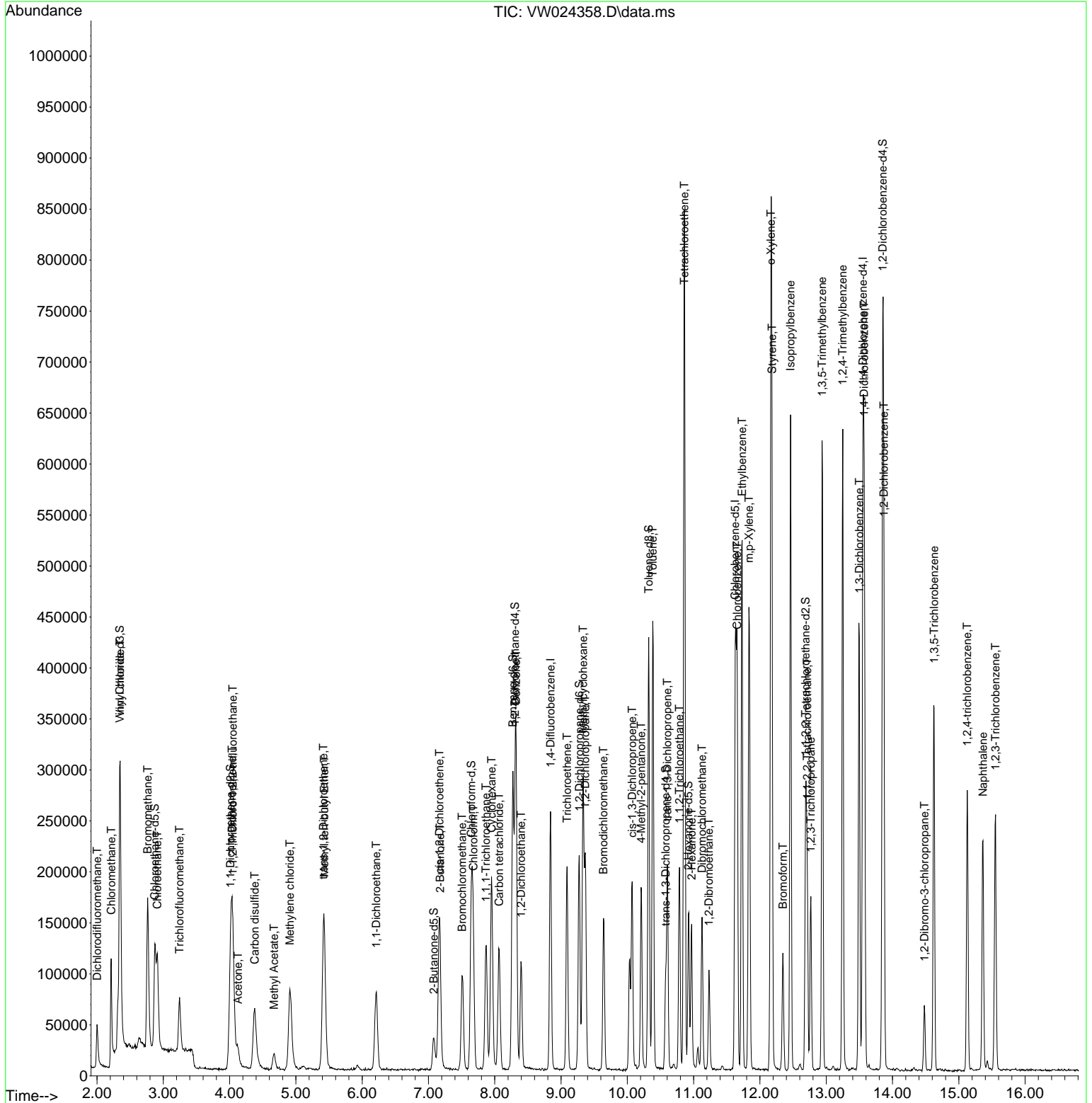
(#) = qualifier out of range (m) = manual integration (+) = signals summed

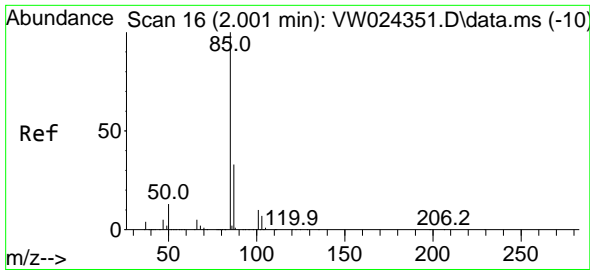
Data Path : Z:\voasrv\HPCHEM1\MSVOA_W\Data\VW082622\
 Data File : VW024358.D
 Acq On : 26 Aug 2022 18:40
 Operator : SY/VA
 Sample : N4344-14MS
 Misc : 5.48g/10mL/MSVOA_W/SOIL
 ALS Vial : 1 Sample Multiplier: 1

Instrument :
 MSVOA_W
Client Sample Id :
 DBVR2MS

Quant Time: Aug 27 00:42:44 2022
 Quant Method : Z:\voasrv\HPCHEM1\MSVOA_W\Method\SFAMWLM082622SMA.M
 Quant Title : SFAM01.0
 QLast Update : Sat Aug 27 00:35:21 2022
 Response via : Initial Calibration

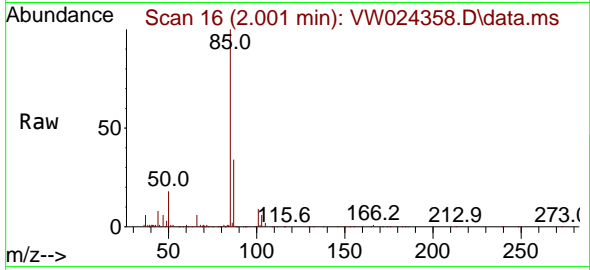
Manual Integrations
APPROVED
 Reviewed By : Semsettin Yesilyurt 08/30/2022
 Supervised By : Mahesh Dadoda 08/30/2022





#2
 Dichlorodifluoromethane
 Concen: 22.769 ug/L
 RT: 2.001 min Scan# 16
 Delta R.T. -0.000 min
 Lab File: VW024358.D
 Acq: 26 Aug 2022 18:40

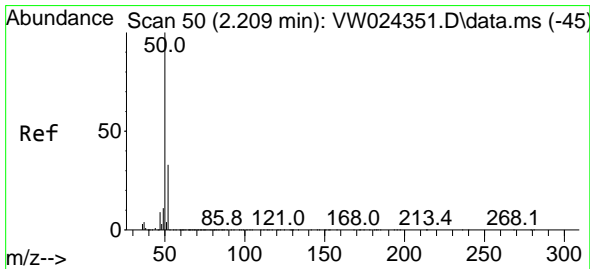
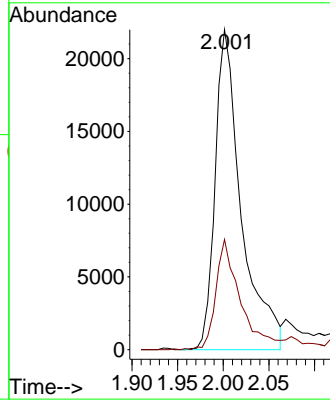
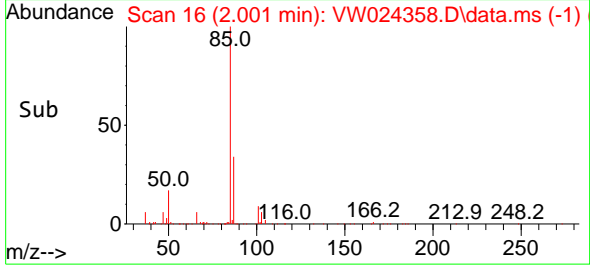
Instrument :
 MSVOA_W
 ClientSampleId :
 DBVR2MS



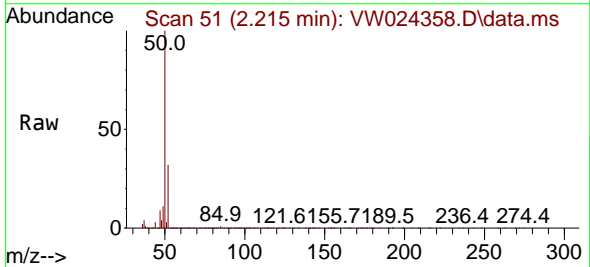
Tgt Ion: 85 Resp: 43762
 Ion Ratio Lower Upper
 85 100
 87 32.3 24.7 37.1

Manual Integrations
 APPROVED

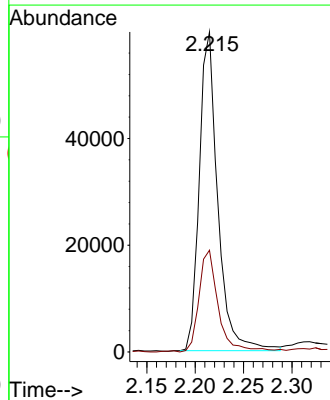
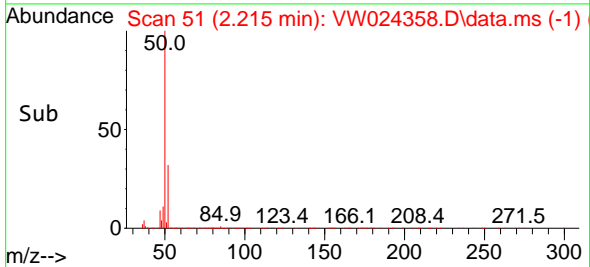
Reviewed By :Semsettin Yesilyurt 08/30/2022
 Supervised By :Mahesh Dadoda 08/30/2022

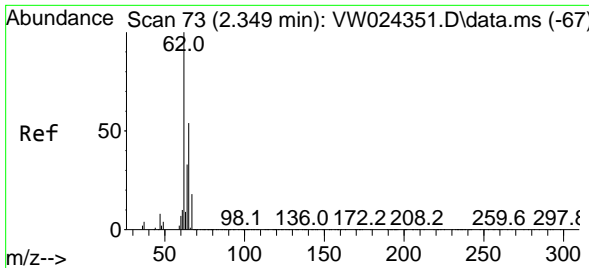


#3
 Chloromethane
 Concen: 22.143 ug/L
 RT: 2.215 min Scan# 51
 Delta R.T. 0.006 min
 Lab File: VW024358.D
 Acq: 26 Aug 2022 18:40



Tgt Ion: 50 Resp: 79515
 Ion Ratio Lower Upper
 50 100
 52 31.8 22.3 41.5





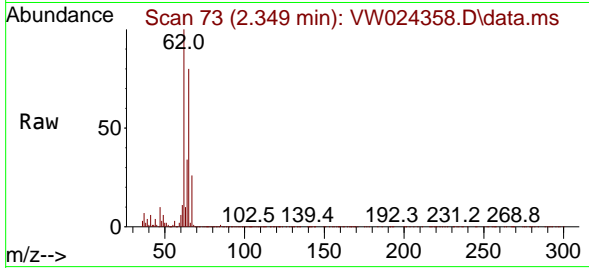
#5
 Vinyl chloride
 Concen: 26.910 ug/L
 RT: 2.349 min Scan# 71
 Delta R.T. -0.000 min
 Lab File: VW024358.D
 Acq: 26 Aug 2022 18:40

Instrument :

MSVOA_W

ClientSampleId :

DBVR2MS

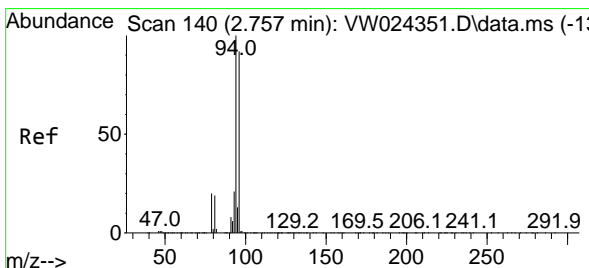
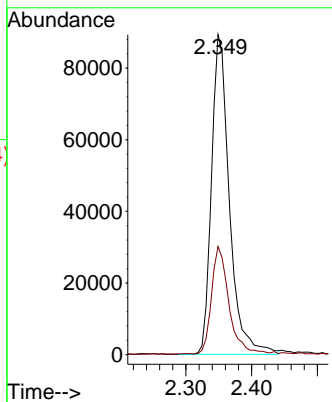
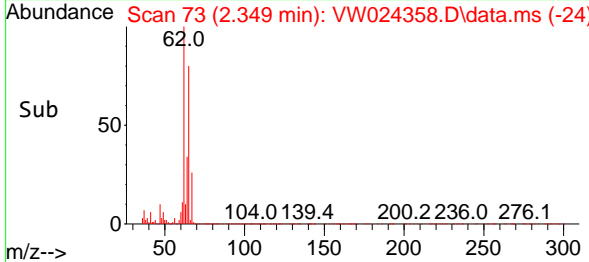


Tgt Ion: 62 Resp: 16892
 Ion Ratio Lower Upper
 62 100
 64 33.8 23.6 43.8

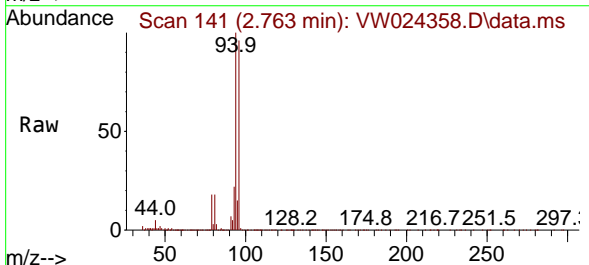
Manual Integrations

APPROVED

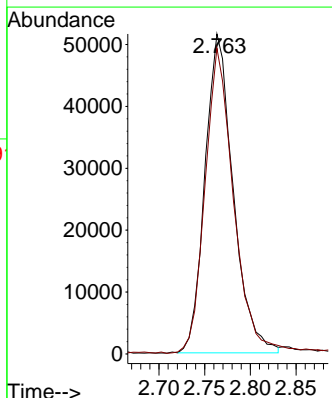
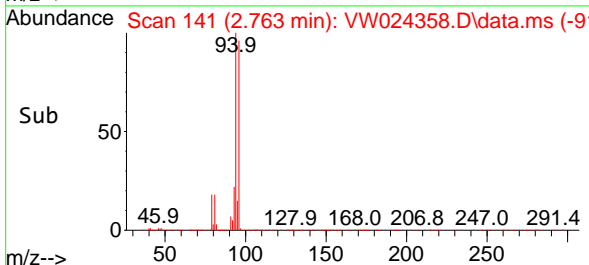
Reviewed By :Semsettin Yesilyurt 08/30/2022
 Supervised By :Mahesh Dadoda 08/30/2022

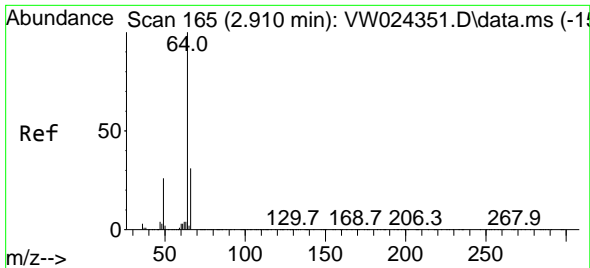


#6
 Bromomethane
 Concen: 25.152 ug/L
 RT: 2.763 min Scan# 141
 Delta R.T. 0.006 min
 Lab File: VW024358.D
 Acq: 26 Aug 2022 18:40



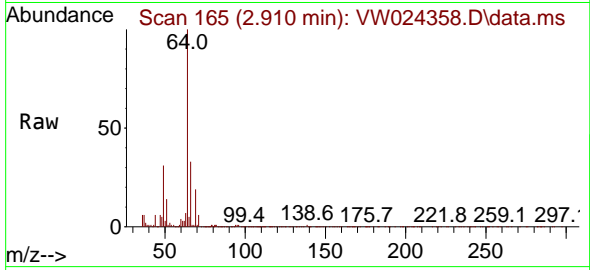
Tgt Ion: 94 Resp: 110825
 Ion Ratio Lower Upper
 94 100
 96 95.6 63.6 118.0





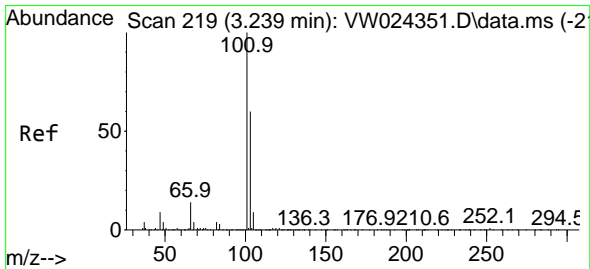
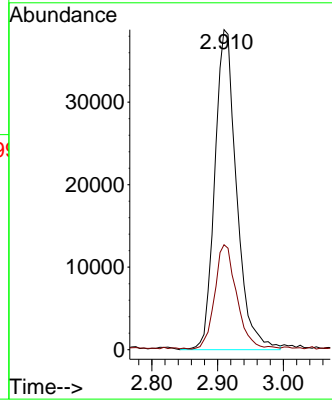
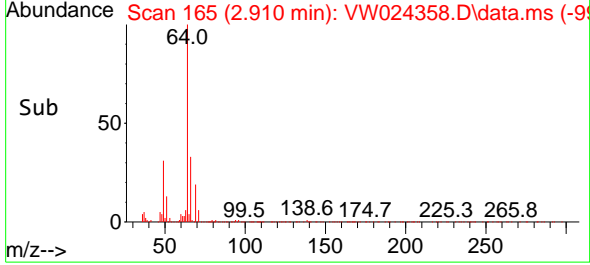
#8
 Chloroethane
 Concen: 27.297 ug/L
 RT: 2.910 min Scan# 10
 Delta R.T. -0.000 min
 Lab File: VW024358.D
 Acq: 26 Aug 2022 18:40

Instrument : MSVOA_W
 Client Sample Id : DBVR2MS

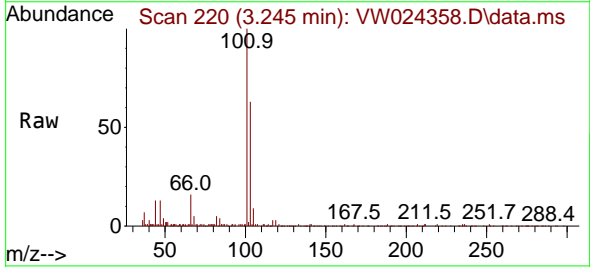


Tgt Ion: 64 Resp: 8951
 Ion Ratio Lower Upper
 64 100
 66 32.8 23.0 42.6

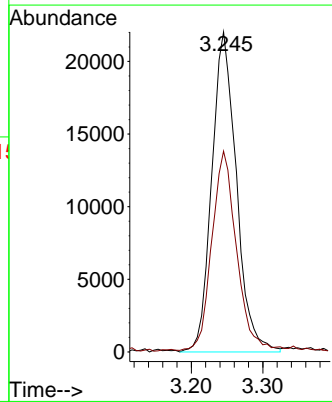
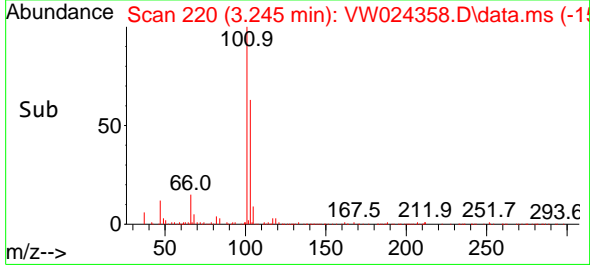
Manual Integrations
APPROVED
 Reviewed By : Semsettin Yesilyurt 08/30/2022
 Supervised By : Mahesh Dadoda 08/30/2022

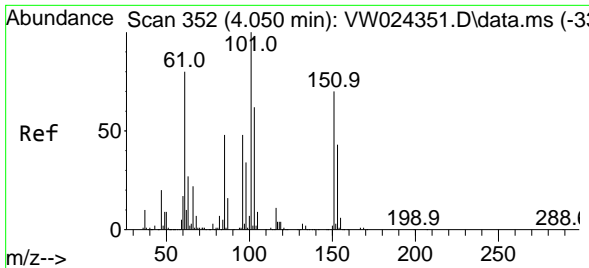


#9
 Trichlorofluoromethane
 Concen: 17.845 ug/L
 RT: 3.245 min Scan# 220
 Delta R.T. 0.006 min
 Lab File: VW024358.D
 Acq: 26 Aug 2022 18:40



Tgt Ion: 101 Resp: 52676
 Ion Ratio Lower Upper
 101 100
 103 62.9 50.4 75.6





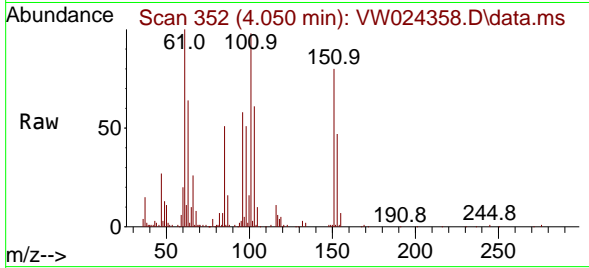
#10
 1,1,2-Trichloro-1,2,2-trifluoroethane
 Concen: 20.542 ug/L
 RT: 4.050 min Scan# 310
 Delta R.T. -0.000 min
 Lab File: VW024358.D
 Acq: 26 Aug 2022 18:40

Instrument :

MSVOA_W

ClientSampleId :

DBVR2MS

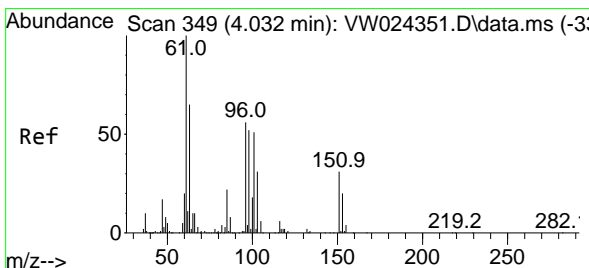
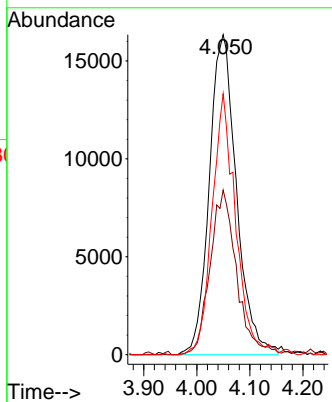
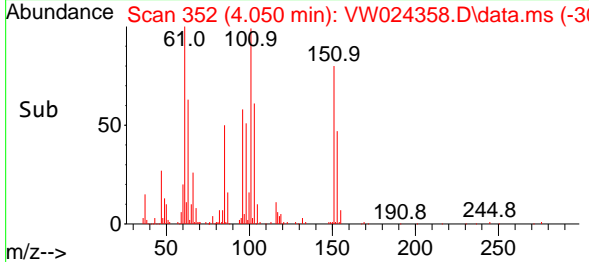


Tgt Ion: 101 Resp: 58160
 Ion Ratio Lower Upper
 101 100
 85 49.3 39.1 58.7
 151 70.1 56.8 85.2

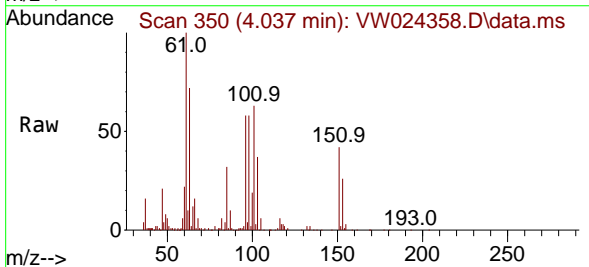
Manual Integrations

APPROVED

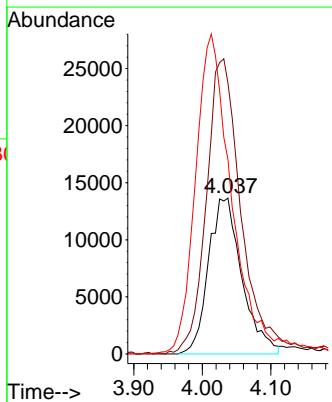
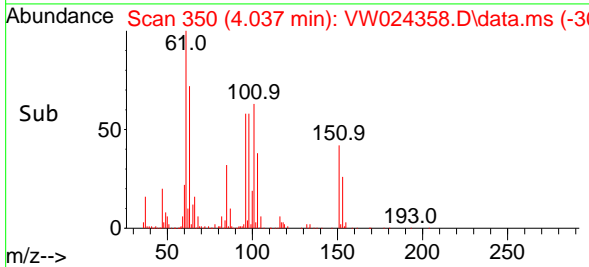
Reviewed By :Semsettin Yesilyurt 08/30/2022
 Supervised By :Mahesh Dadoda 08/30/2022

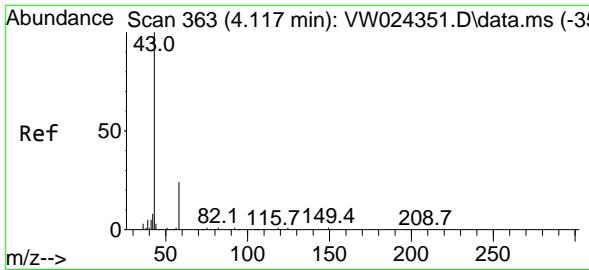


#12
 1,1-Dichloroethene
 Concen: 20.234 ug/L
 RT: 4.037 min Scan# 350
 Delta R.T. 0.006 min
 Lab File: VW024358.D
 Acq: 26 Aug 2022 18:40



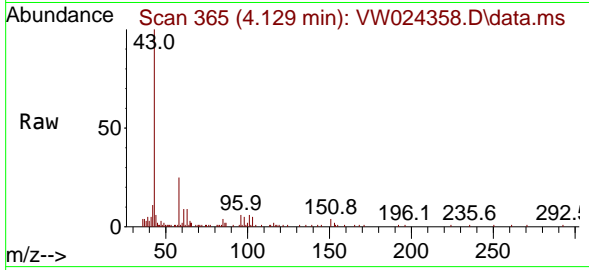
Tgt Ion: 96 Resp: 46379
 Ion Ratio Lower Upper
 96 100
 61 173.8 118.8 220.6
 63 124.7 72.8 135.2





#13
 Acetone
 Concen: 45.618 ug/L
 RT: 4.129 min Scan# 30
 Delta R.T. 0.012 min
 Lab File: VW024358.D
 Acq: 26 Aug 2022 18:40

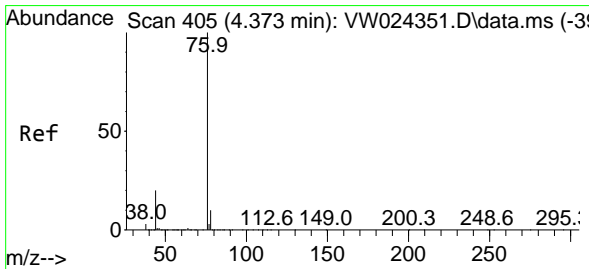
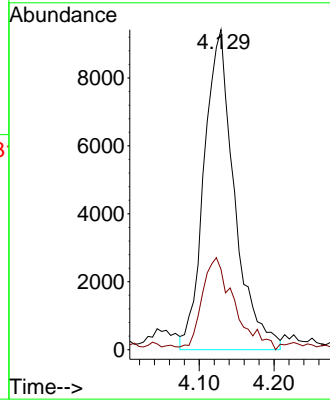
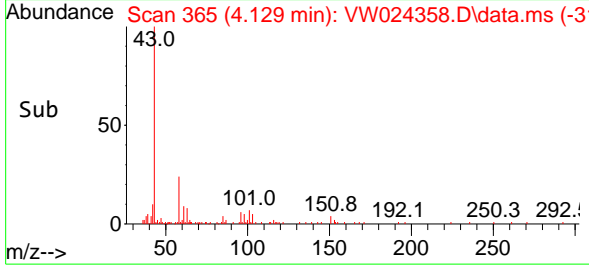
Instrument :
 MSVOA_W
 ClientSampleId :
 DBVR2MS



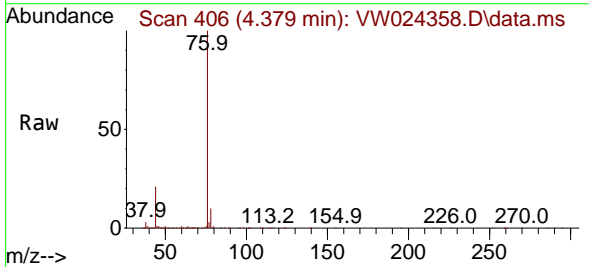
Tgt Ion: 43 Resp: 26524
 Ion Ratio Lower Upper
 43 100
 58 27.5 0.0 58.4

Manual Integrations
APPROVED

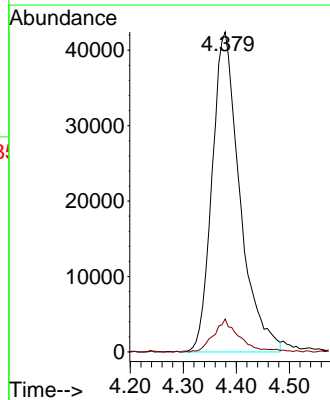
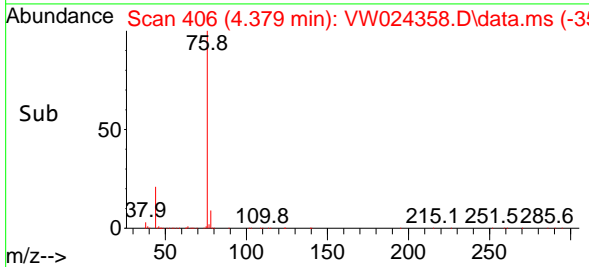
Reviewed By :Semsettin Yesilyurt 08/30/2022
 Supervised By :Mahesh Dadoda 08/30/2022

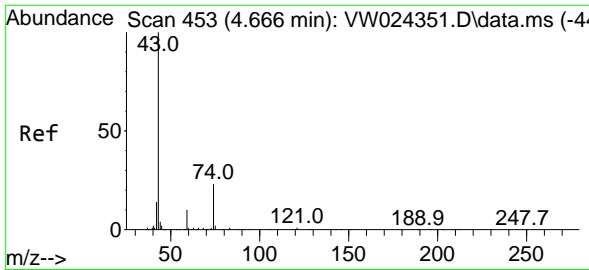


#14
 Carbon disulfide
 Concen: 20.226 ug/L
 RT: 4.379 min Scan# 406
 Delta R.T. 0.006 min
 Lab File: VW024358.D
 Acq: 26 Aug 2022 18:40



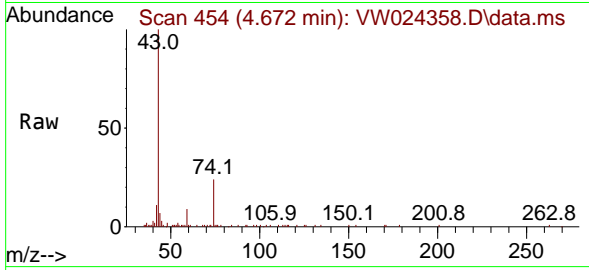
Tgt Ion: 76 Resp: 154075
 Ion Ratio Lower Upper
 76 100
 78 10.3 7.4 11.2





#15
Methyl Acetate
Concen: 21.613 ug/L
RT: 4.672 min Scan# 454
Delta R.T. 0.006 min
Lab File: VW024358.D
Acq: 26 Aug 2022 18:40

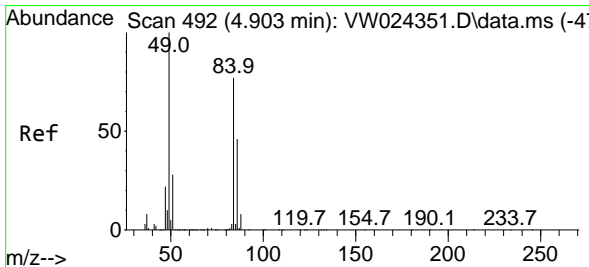
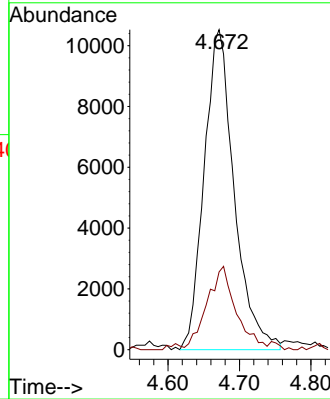
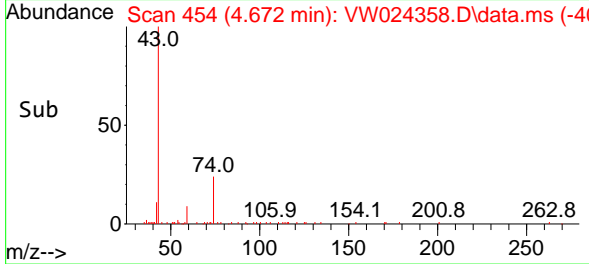
Instrument : MSVOA_W
Client SampleID : DBVR2MS



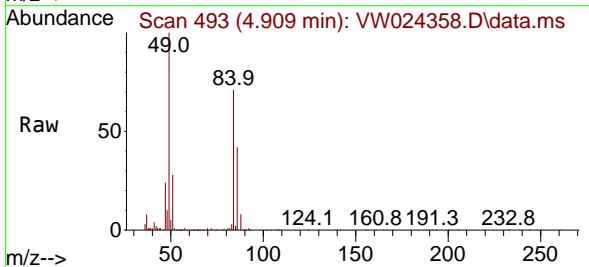
Tgt Ion: 43 Resp: 3074
Ion Ratio Lower Upper
43 100
74 23.8 17.9 26.9

Manual Integrations
APPROVED

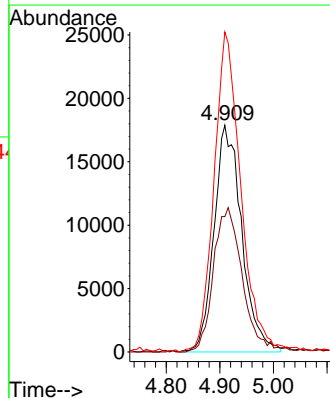
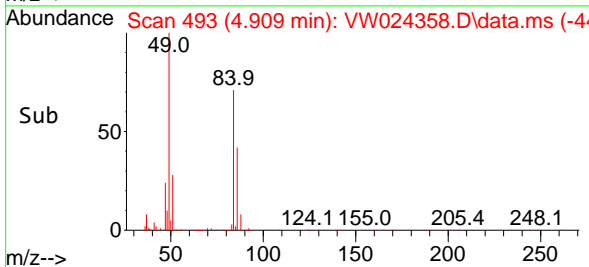
Reviewed By :Semsettin Yesilyurt 08/30/2022
Supervised By :Mahesh Dadoda 08/30/2022

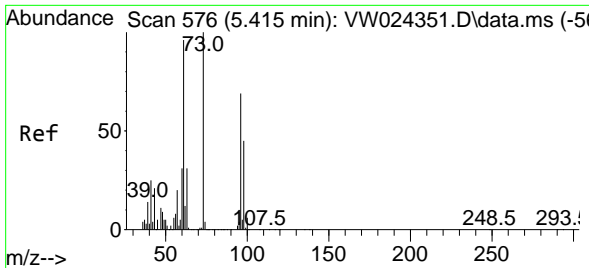


#16
Methylene chloride
Concen: 19.923 ug/L m
RT: 4.909 min Scan# 493
Delta R.T. 0.006 min
Lab File: VW024358.D
Acq: 26 Aug 2022 18:40



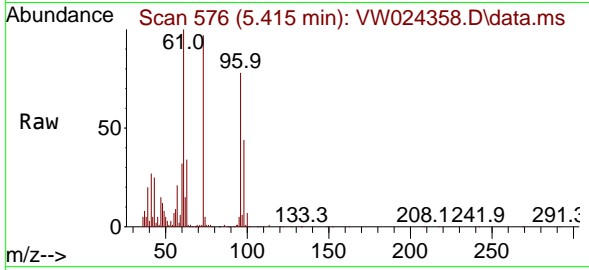
Tgt Ion: 84 Resp: 64118
Ion Ratio Lower Upper
84 100
86 59.7 47.7 88.7
49 141.2 96.6 179.4





#17
 trans-1,2-Dichloroethene
 Concen: 20.148 ug/L
 RT: 5.415 min Scan# 576
 Delta R.T. -0.000 min
 Lab File: VW024358.D
 Acq: 26 Aug 2022 18:40

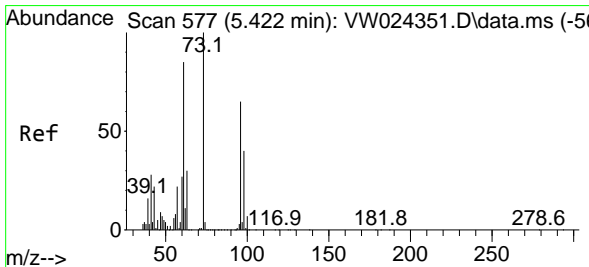
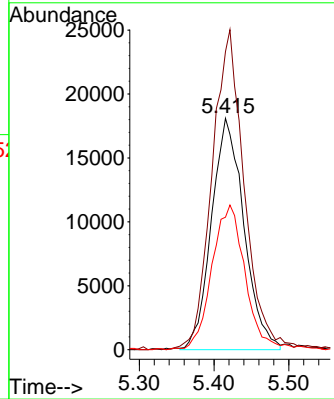
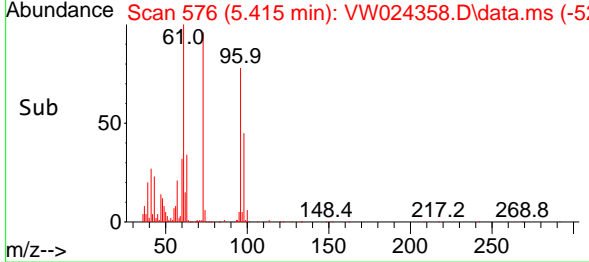
Instrument : MSVOA_W
 ClientSampleId : DBVR2MS



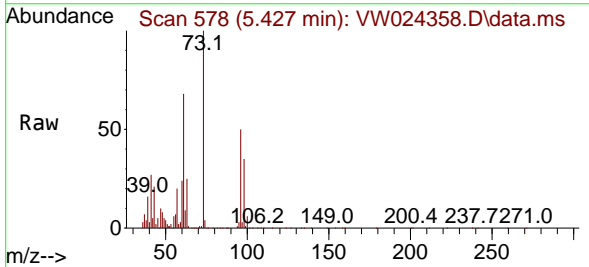
Tgt Ion: 96 Resp: 5466
 Ion Ratio Lower Upper
 96 100
 61 128.8 92.1 171.1
 98 57.3 44.7 83.1

Manual Integrations
APPROVED

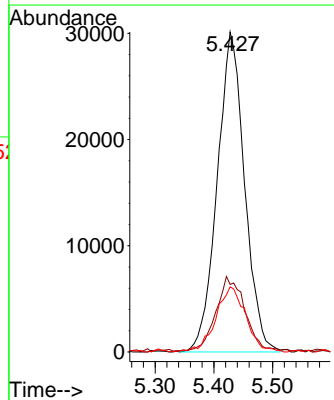
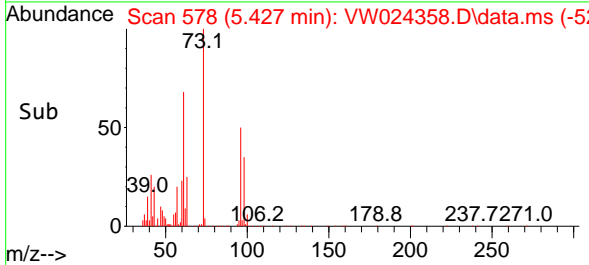
Reviewed By :Semsettin Yesilyurt 08/30/2022
 Supervised By :Mahesh Dadoda 08/30/2022

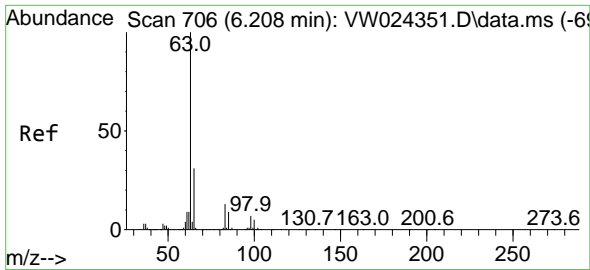


#18
 Methyl tert-butyl Ether
 Concen: 21.936 ug/L
 RT: 5.427 min Scan# 578
 Delta R.T. 0.006 min
 Lab File: VW024358.D
 Acq: 26 Aug 2022 18:40



Tgt Ion: 73 Resp: 97446
 Ion Ratio Lower Upper
 73 100
 43 24.0 18.8 28.2
 57 19.3 18.1 27.1





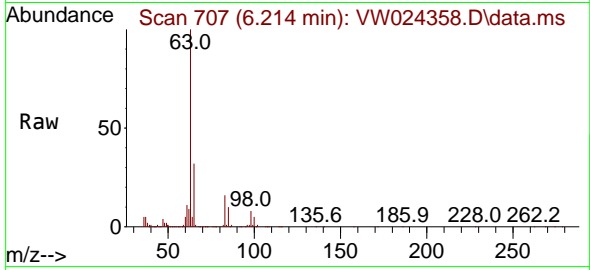
#19
 1,1-Dichloroethane
 Concen: 20.288 ug/L
 RT: 6.214 min Scan# 707
 Delta R.T. 0.006 min
 Lab File: VW024358.D
 Acq: 26 Aug 2022 18:40

Instrument :

MSVOA_W

Client Sample Id :

DBVR2MS

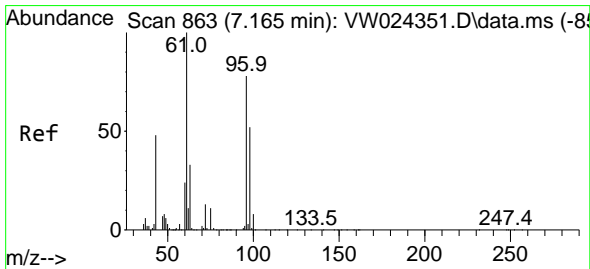
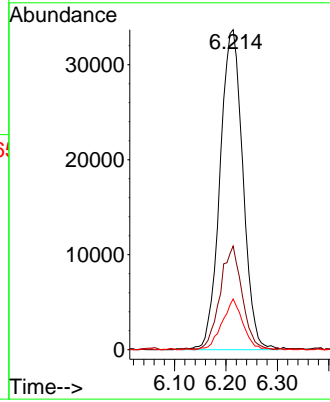
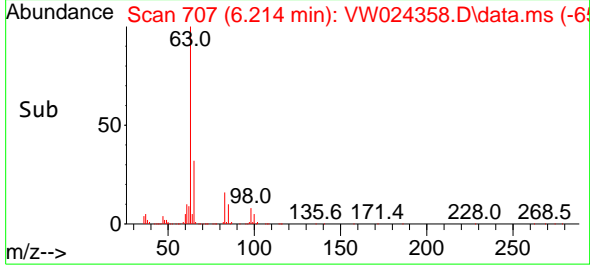


Tgt Ion: 63 Resp: 10408
 Ion Ratio Lower Upper
 63 100
 65 32.4 23.6 43.8
 83 15.9 10.4 19.4

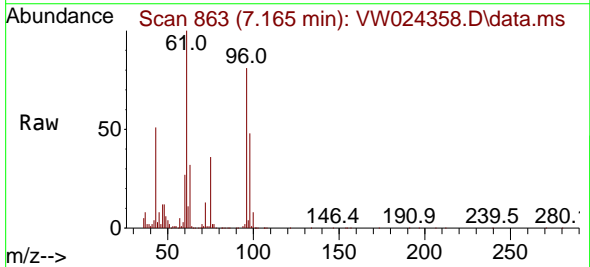
Manual Integrations

APPROVED

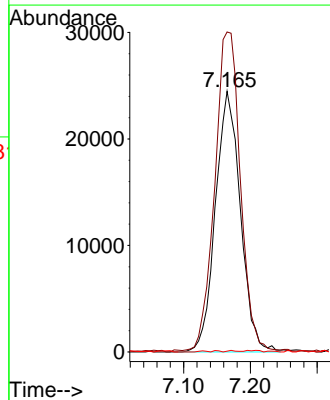
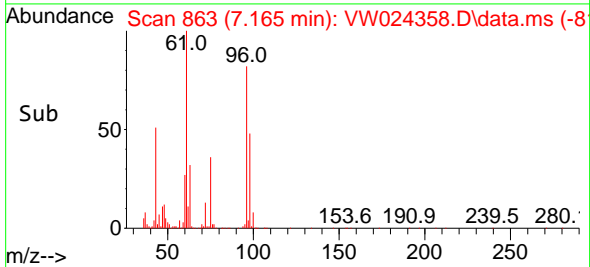
Reviewed By :Semsettin Yesilyurt 08/30/2022
 Supervised By :Mahesh Dadoda 08/30/2022

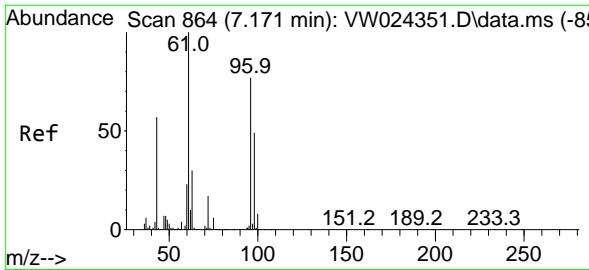


#20
 cis-1,2-Dichloroethene
 Concen: 21.368 ug/L m
 RT: 7.165 min Scan# 863
 Delta R.T. -0.000 min
 Lab File: VW024358.D
 Acq: 26 Aug 2022 18:40



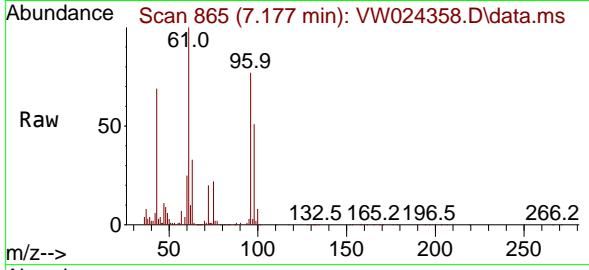
Tgt Ion: 96 Resp: 63752
 Ion Ratio Lower Upper
 96 100
 61 122.8 90.2 167.6
 68 0.3 0.0 0.0





#22
 2-Butanone
 Concen: 46.497 ug/L
 RT: 7.177 min Scan# 865
 Delta R.T. 0.006 min
 Lab File: VW024358.D
 Acq: 26 Aug 2022 18:40

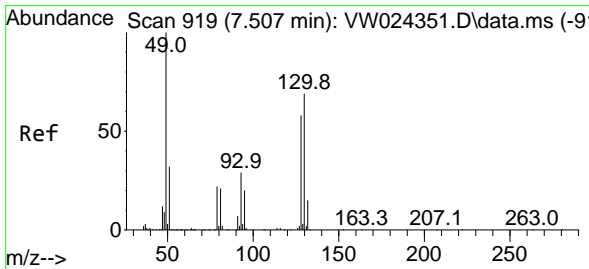
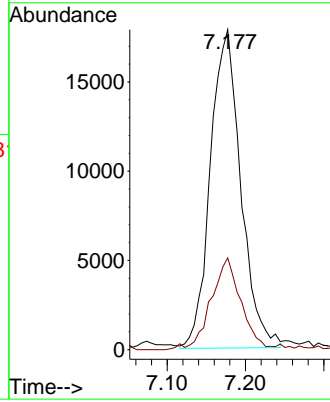
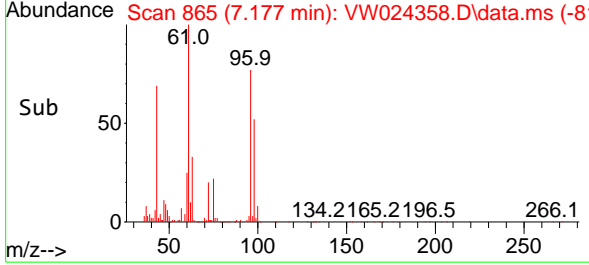
Instrument : MSVOA_W
 Client Sample Id : DBVR2MS



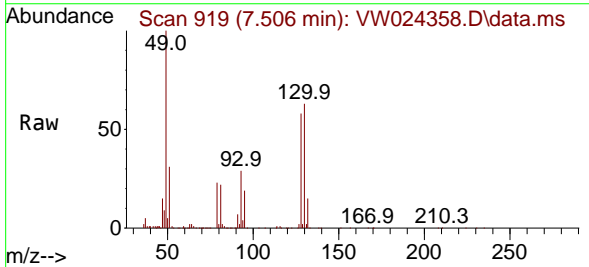
Tgt Ion: 43 Resp: 4823
 Ion Ratio Lower Upper
 43 100
 72 27.6 13.9 41.6

Manual Integrations
 APPROVED

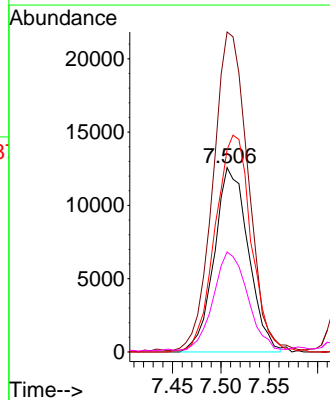
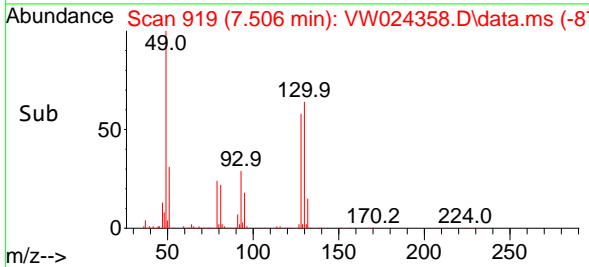
Reviewed By :Semsettin Yesilyurt 08/30/2022
 Supervised By :Mahesh Dadoda 08/30/2022

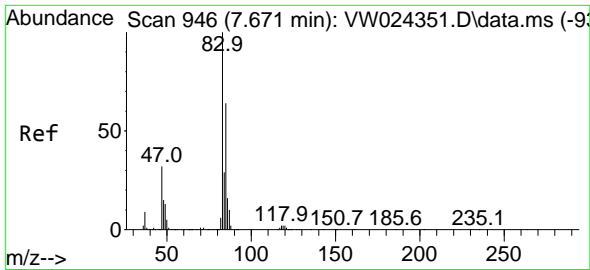


#23
 Bromochloromethane
 Concen: 21.115 ug/L
 RT: 7.506 min Scan# 919
 Delta R.T. -0.000 min
 Lab File: VW024358.D
 Acq: 26 Aug 2022 18:40



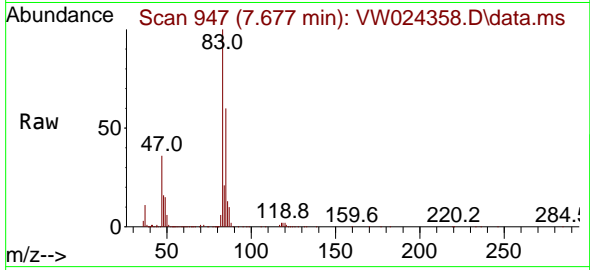
Tgt Ion:128 Resp: 30762
 Ion Ratio Lower Upper
 128 100
 49 173.6 122.1 226.7
 130 109.7 91.1 169.1
 51 54.2 39.0 58.4





#25
 Chloroform
 Concen: 20.793 ug/L
 RT: 7.677 min Scan# 947
 Delta R.T. 0.006 min
 Lab File: VW024358.D
 Acq: 26 Aug 2022 18:40

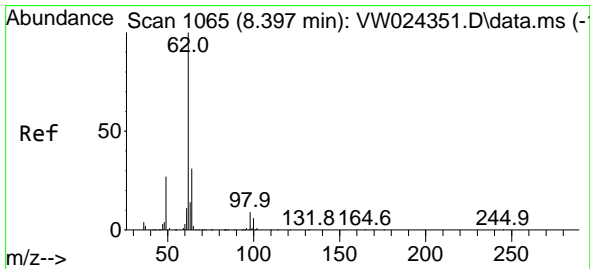
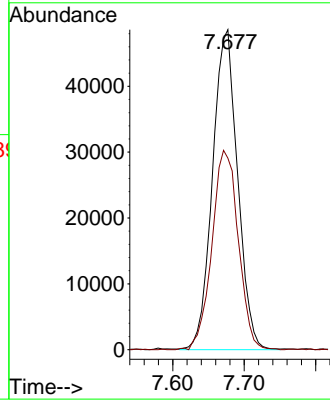
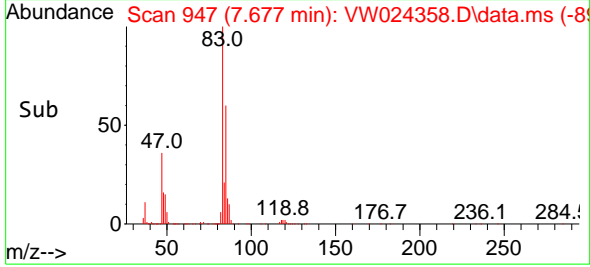
Instrument : MSVOA_W
 ClientSampleId : DBVR2MS



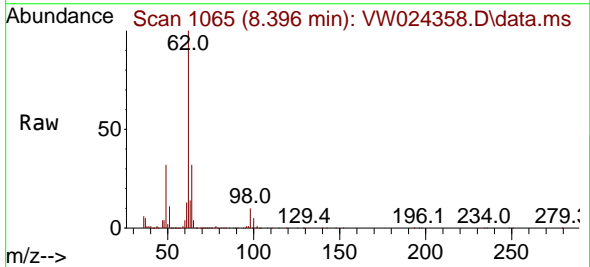
Tgt Ion: 83 Resp: 11835
 Ion Ratio Lower Upper
 83 100
 85 59.9 47.5 88.1

Manual Integrations
APPROVED

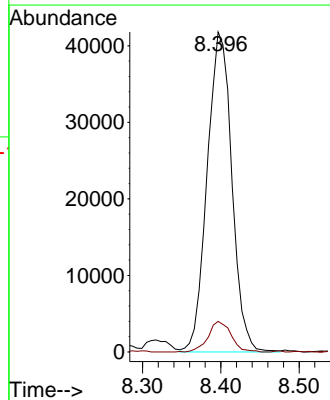
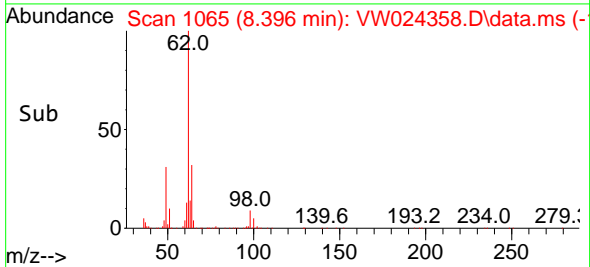
Reviewed By :Semsettin Yesilyurt 08/30/2022
 Supervised By :Mahesh Dadoda 08/30/2022

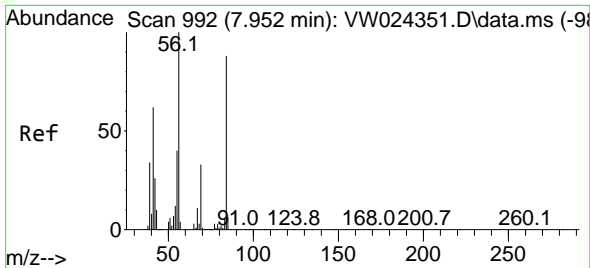


#27
 1,2-Dichloroethane
 Concen: 22.119 ug/L
 RT: 8.396 min Scan# 1065
 Delta R.T. -0.000 min
 Lab File: VW024358.D
 Acq: 26 Aug 2022 18:40



Tgt Ion: 62 Resp: 91646
 Ion Ratio Lower Upper
 62 100
 98 9.6 6.7 10.1





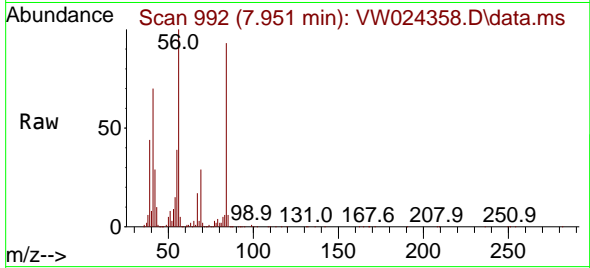
#29
 Cyclohexane
 Concen: 20.081 ug/L
 RT: 7.951 min Scan# 992
 Delta R.T. -0.000 min
 Lab File: VW024358.D
 Acq: 26 Aug 2022 18:40

Instrument :

MSVOA_W

Client SampleID :

DBVR2MS

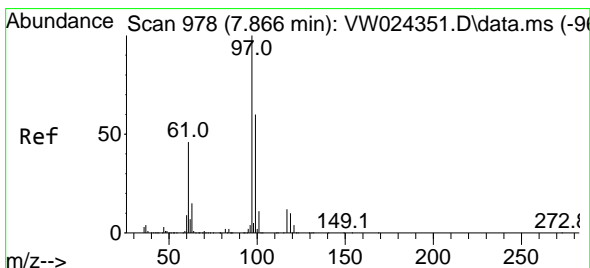
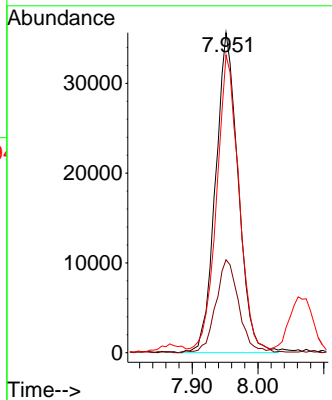
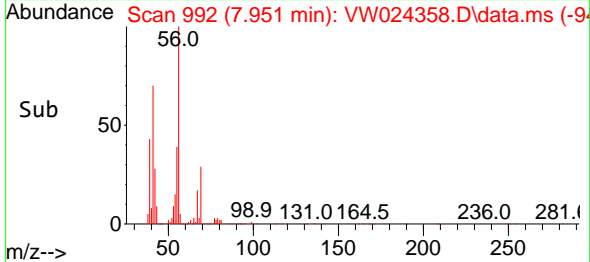


Tgt Ion: 56 Resp: 8549
 Ion Ratio Lower Upper
 56 100
 69 28.9 23.5 35.3
 84 92.1 72.2 108.4

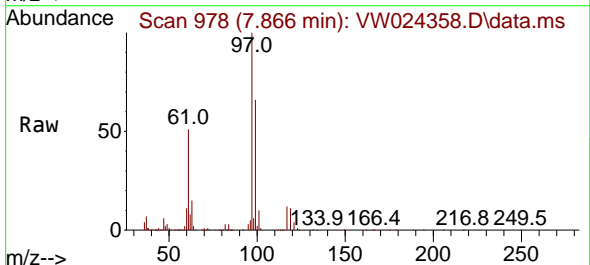
Manual Integrations

APPROVED

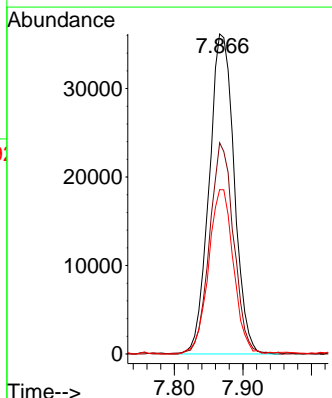
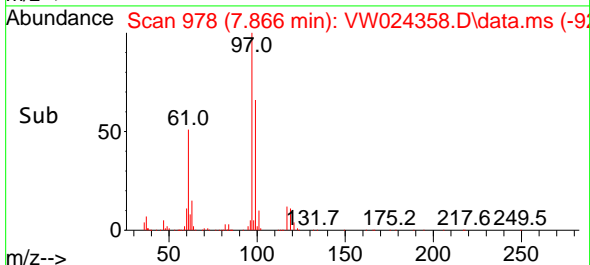
Reviewed By :Semsettin Yesilyurt 08/30/2022
 Supervised By :Mahesh Dadoda 08/30/2022

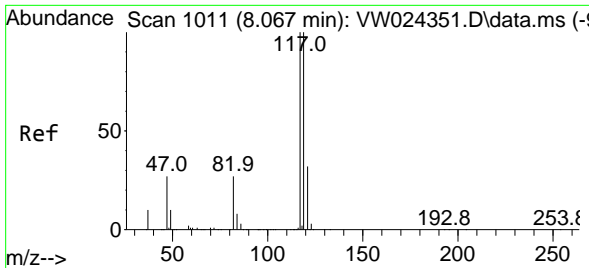


#30
 1,1,1-Trichloroethane
 Concen: 19.697 ug/L
 RT: 7.866 min Scan# 978
 Delta R.T. -0.000 min
 Lab File: VW024358.D
 Acq: 26 Aug 2022 18:40



Tgt Ion: 97 Resp: 91709
 Ion Ratio Lower Upper
 97 100
 99 63.6 50.2 75.2
 61 51.2 40.2 60.4





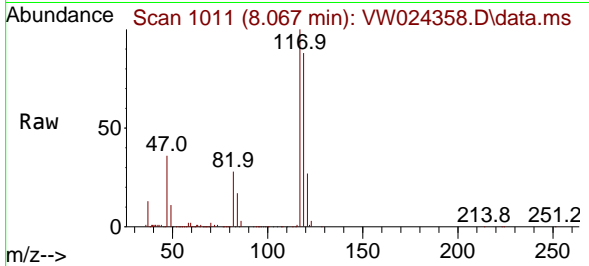
#31
 Carbon tetrachloride
 Concen: 19.081 ug/L
 RT: 8.067 min Scan# 1011
 Delta R.T. -0.000 min
 Lab File: VW024358.D
 Acq: 26 Aug 2022 18:40

Instrument :

MSVOA_W

ClientSampleId :

DBVR2MS

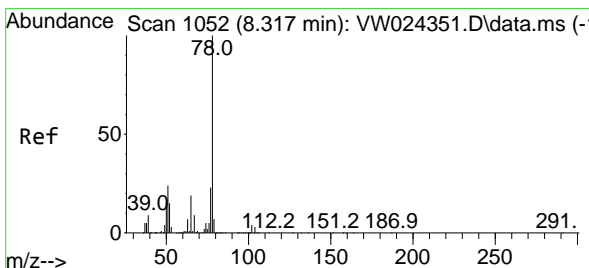
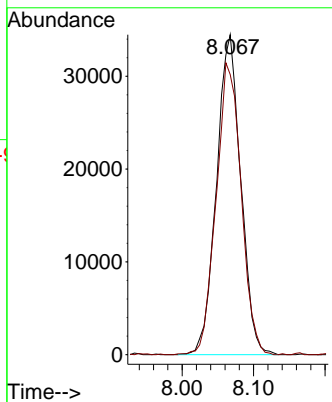
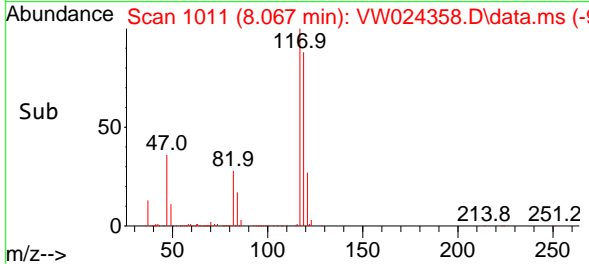


Tgt Ion:117 Resp: 81274
 Ion Ratio Lower Upper
 117 100
 119 93.7 75.9 113.9

Manual Integrations

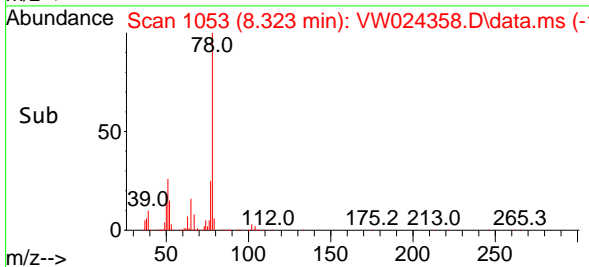
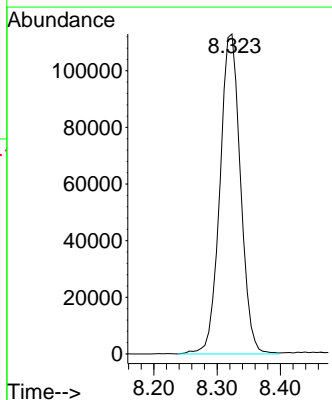
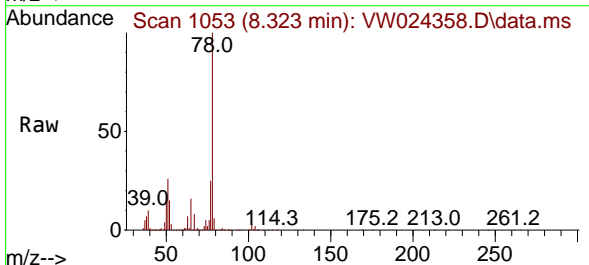
APPROVED

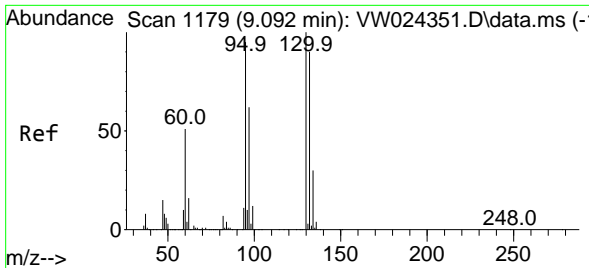
Reviewed By :Semsettin Yesilyurt 08/30/2022
 Supervised By :Mahesh Dadoda 08/30/2022



#33
 Benzene
 Concen: 20.738 ug/L
 RT: 8.323 min Scan# 1053
 Delta R.T. 0.006 min
 Lab File: VW024358.D
 Acq: 26 Aug 2022 18:40

Tgt Ion: 78 Resp: 254993





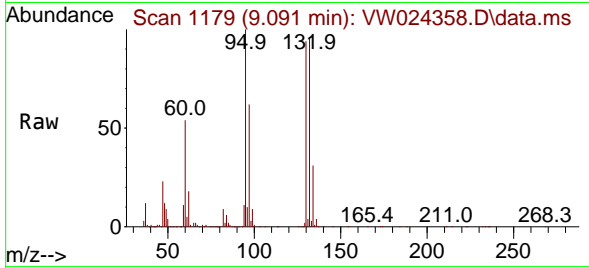
#34
 Trichloroethene
 Concen: 18.943 ug/L
 RT: 9.091 min Scan# 1179
 Delta R.T. -0.000 min
 Lab File: VW024358.D
 Acq: 26 Aug 2022 18:40

Instrument :

MSVOA_W

ClientSampleId :

DBVR2MS



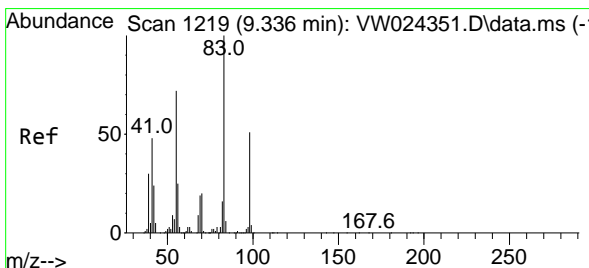
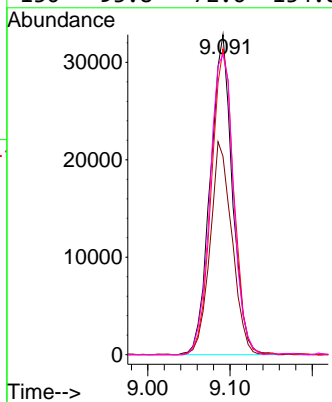
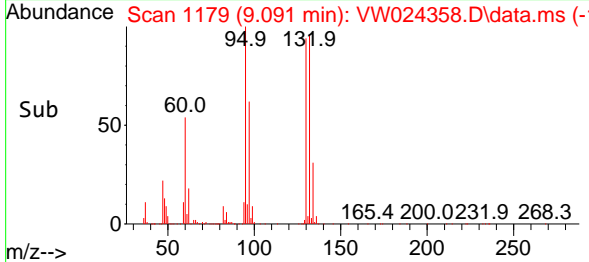
Tgt Ion: 95 Resp: 61389

Ion	Ratio	Lower	Upper
95	100		
97	62.0	48.4	89.8
132	95.5	68.6	127.4
130	93.8	72.6	134.8

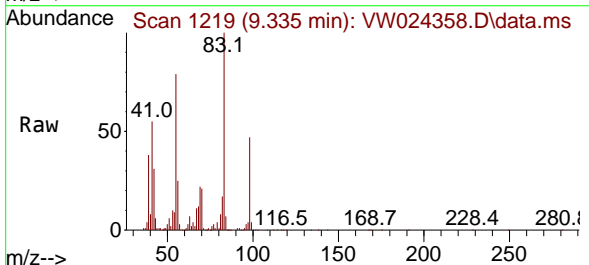
Manual Integrations

APPROVED

Reviewed By :Semsettin Yesilyurt 08/30/2022
 Supervised By :Mahesh Dadoda 08/30/2022

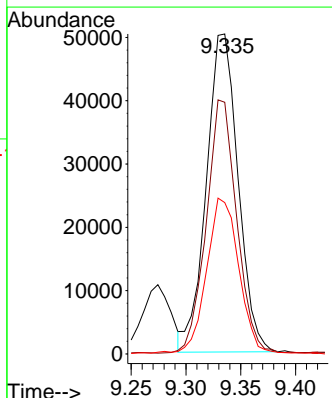
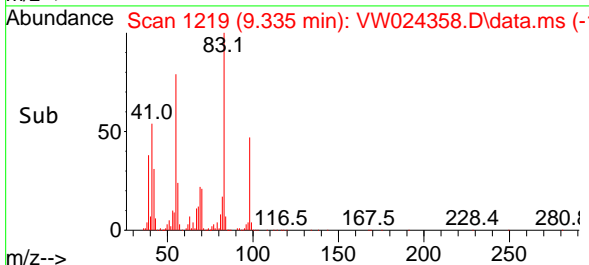


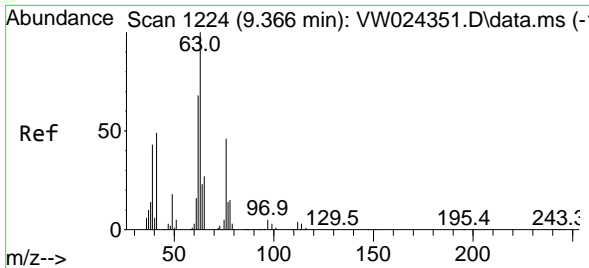
#35
 Methylcyclohexane
 Concen: 19.487 ug/L
 RT: 9.335 min Scan# 1219
 Delta R.T. -0.000 min
 Lab File: VW024358.D
 Acq: 26 Aug 2022 18:40



Tgt Ion: 83 Resp: 101323

Ion	Ratio	Lower	Upper
83	100		
55	76.5	60.1	90.1
98	49.8	40.5	60.7





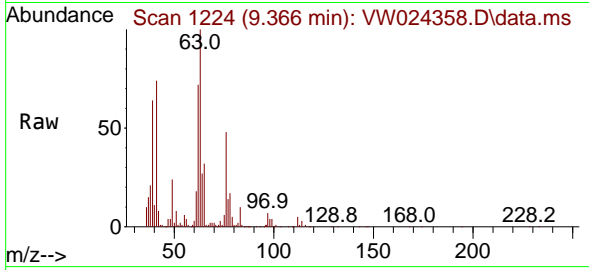
#37
 1,2-Dichloropropane
 Concen: 20.658 ug/L
 RT: 9.366 min Scan# 1111
 Delta R.T. -0.000 min
 Lab File: VW024358.D
 Acq: 26 Aug 2022 18:40

Instrument :

MSVOA_W

ClientSampleId :

DBVR2MS

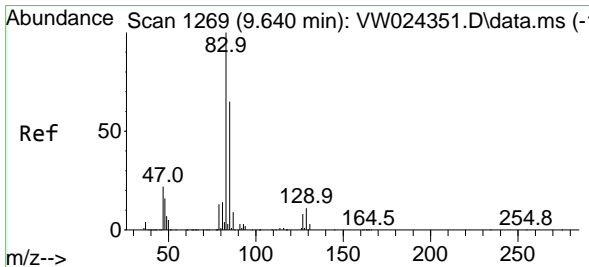
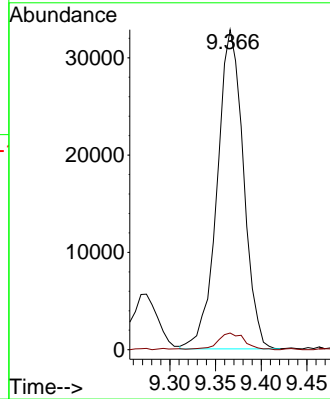
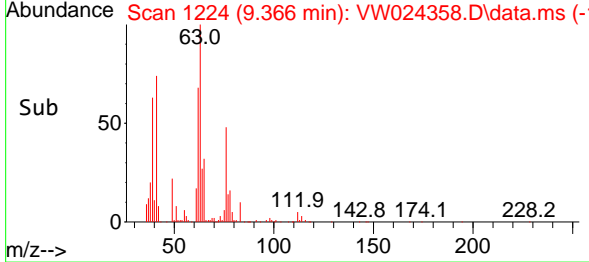


Tgt Ion: 63 Resp: 6555
 Ion Ratio Lower Upper
 63 100
 112 5.3 3.4 5.0

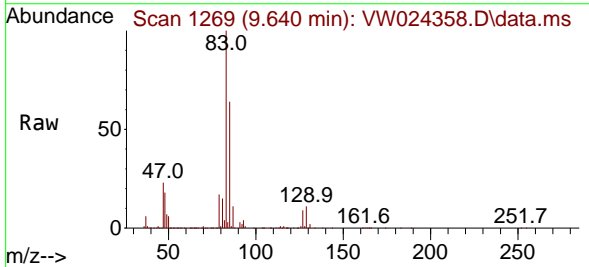
Manual Integrations

APPROVED

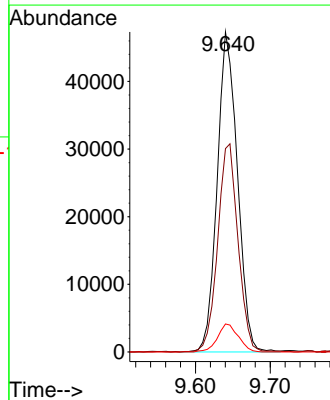
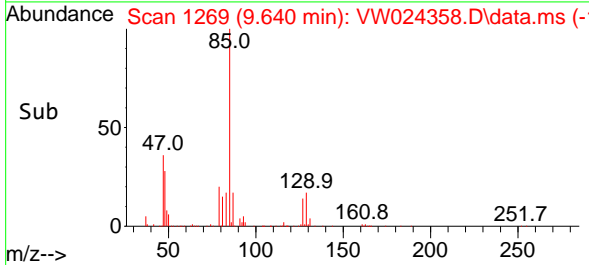
Reviewed By :Semsettin Yesilyurt 08/30/2022
 Supervised By :Mahesh Dadoda 08/30/2022

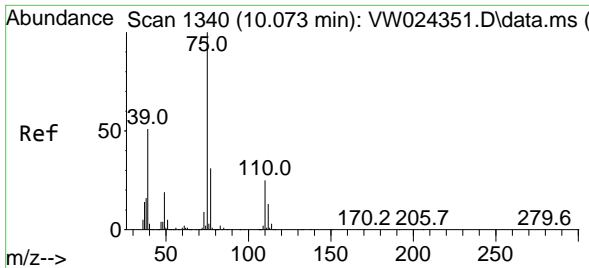


#38
 Bromodichloromethane
 Concen: 20.648 ug/L
 RT: 9.640 min Scan# 1269
 Delta R.T. -0.000 min
 Lab File: VW024358.D
 Acq: 26 Aug 2022 18:40



Tgt Ion: 83 Resp: 89225
 Ion Ratio Lower Upper
 83 100
 85 63.5 46.3 85.9
 127 8.8 6.7 10.1





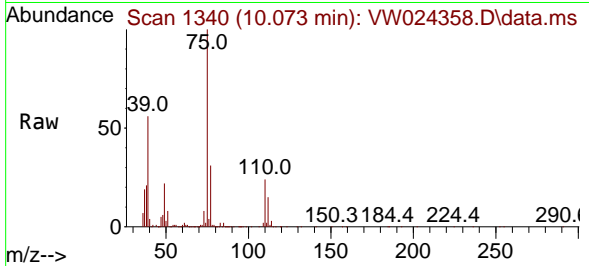
#39
 cis-1,3-Dichloropropene
 Concen: 21.485 ug/L
 RT: 10.073 min Scan# 1340
 Delta R.T. -0.000 min
 Lab File: VW024358.D
 Acq: 26 Aug 2022 18:40

Instrument :

MSVOA_W

ClientSampleId :

DBVR2MS

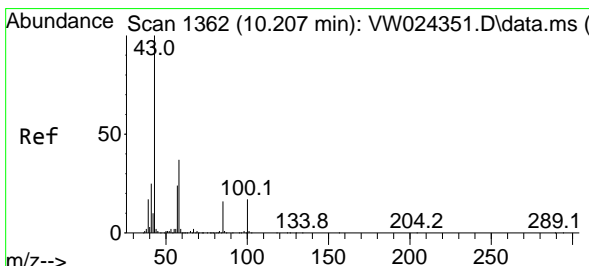
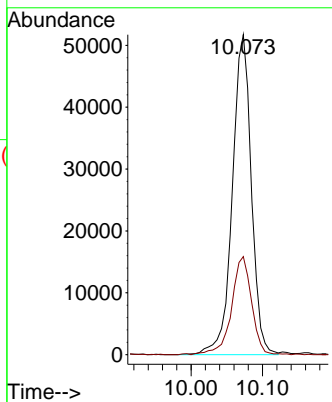
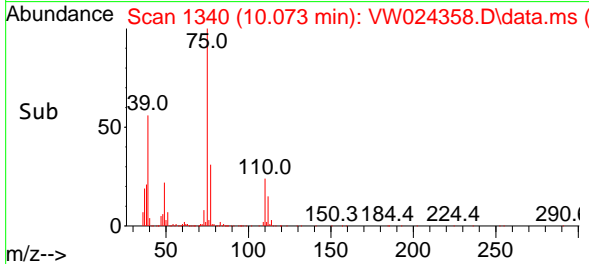


Tgt Ion: 75 Resp: 95298
 Ion Ratio Lower Upper
 75 100
 77 30.6 21.8 40.6

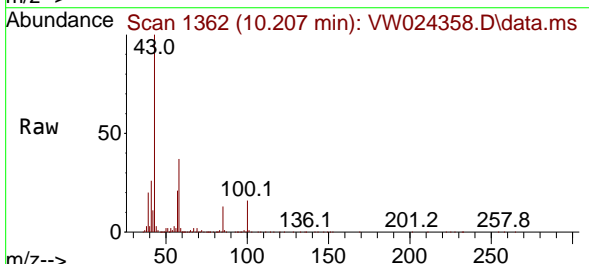
Manual Integrations

APPROVED

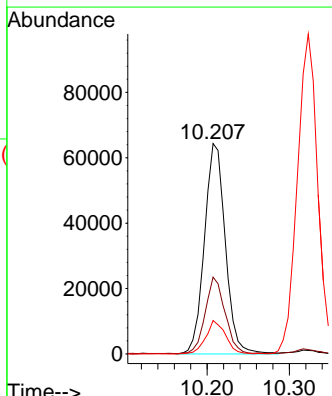
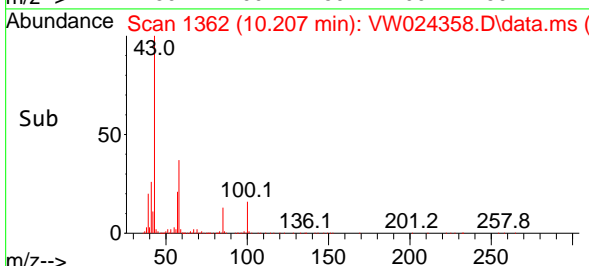
Reviewed By :Semsettin Yesilyurt 08/30/2022
 Supervised By :Mahesh Dadoda 08/30/2022

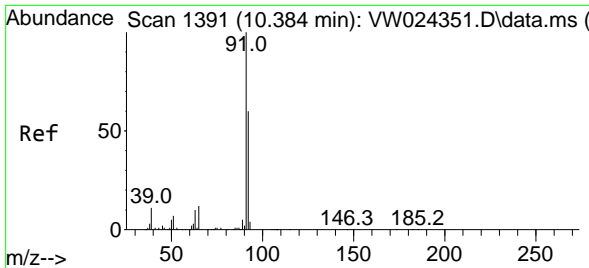


#40
 4-Methyl-2-pentanone
 Concen: 50.438 ug/L
 RT: 10.207 min Scan# 1362
 Delta R.T. -0.000 min
 Lab File: VW024358.D
 Acq: 26 Aug 2022 18:40



Tgt Ion: 43 Resp: 113806
 Ion Ratio Lower Upper
 43 100
 58 34.8 29.4 44.2
 100 14.9 11.8 17.8





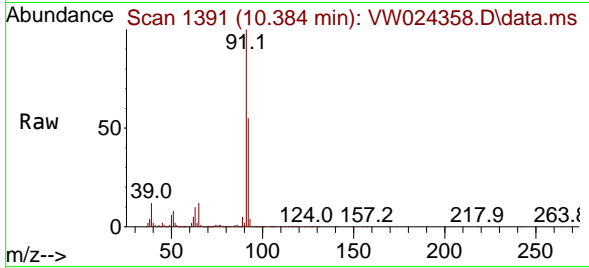
#42
 Toluene
 Concen: 22.715 ug/L
 RT: 10.384 min Scan# 1391
 Delta R.T. -0.000 min
 Lab File: VW024358.D
 Acq: 26 Aug 2022 18:40

Instrument :

MSVOA_W

ClientSampleId :

DBVR2MS

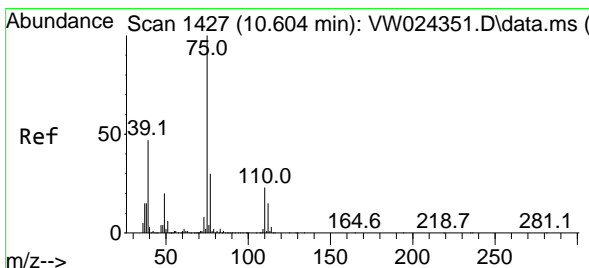
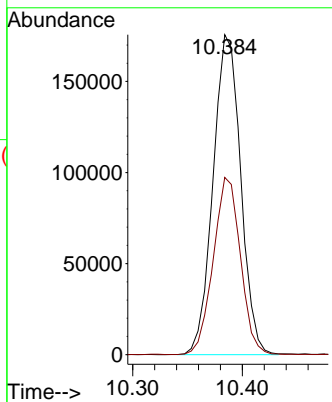
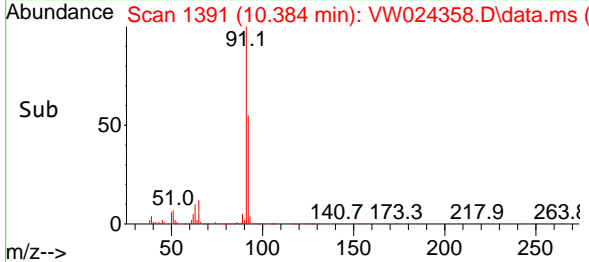


Tgt Ion: 91 Resp: 308224
 Ion Ratio Lower Upper
 91 100
 92 55.4 40.0 74.4

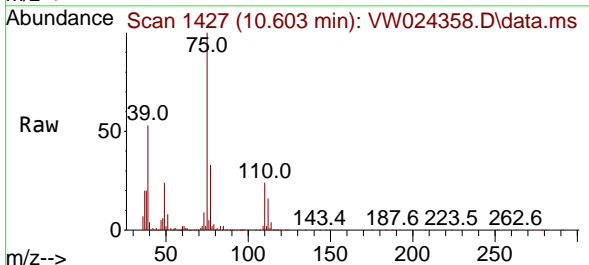
Manual Integrations

APPROVED

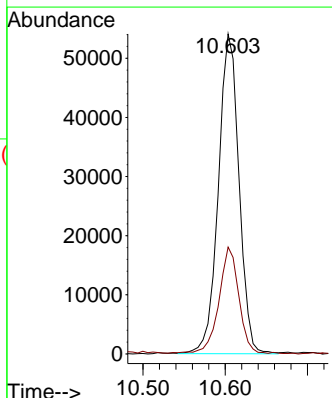
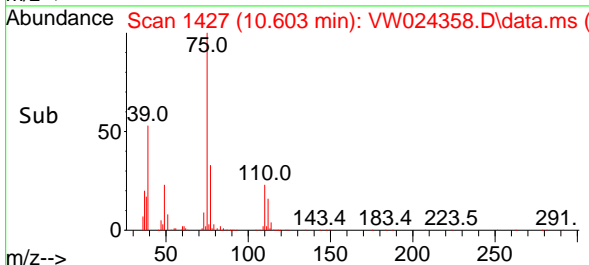
Reviewed By :Semsettin Yesilyurt 08/30/2022
 Supervised By :Mahesh Dadoda 08/30/2022

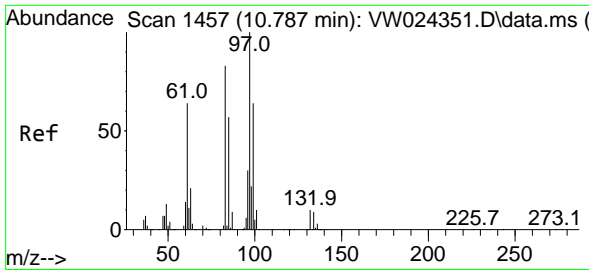


#44
 trans-1,3-Dichloropropene
 Concen: 21.902 ug/L
 RT: 10.603 min Scan# 1427
 Delta R.T. -0.000 min
 Lab File: VW024358.D
 Acq: 26 Aug 2022 18:40



Tgt Ion: 75 Resp: 94399
 Ion Ratio Lower Upper
 75 100
 77 33.4 21.1 39.1





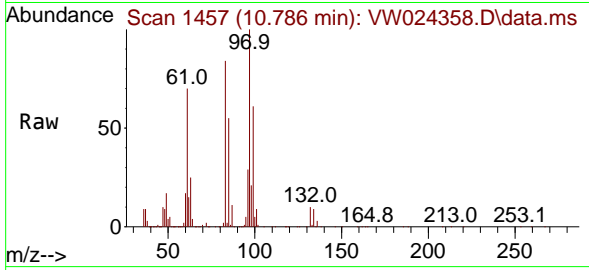
#45
 1,1,2-Trichloroethane
 Concen: 21.638 ug/L
 RT: 10.786 min Scan# 1457
 Delta R.T. -0.000 min
 Lab File: VW024358.D
 Acq: 26 Aug 2022 18:40

Instrument :

MSVOA_W

ClientSampleId :

DBVR2MS



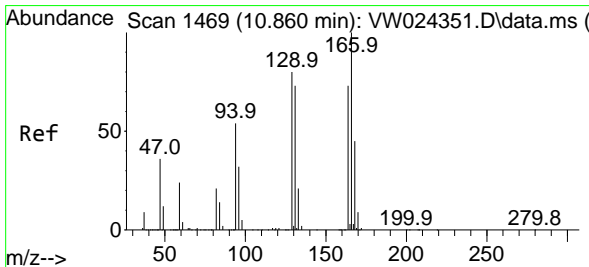
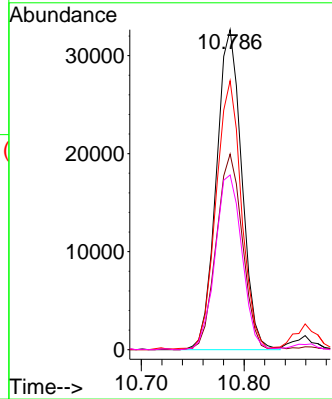
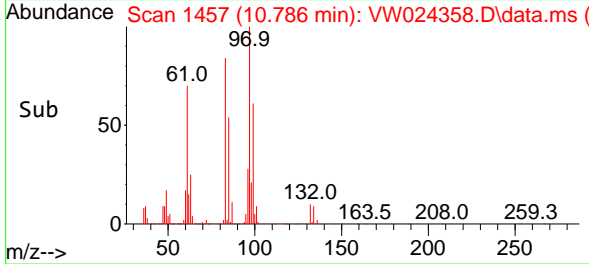
Tgt Ion: 97 Resp: 5599

Ion	Ratio	Lower	Upper
97	100		
99	61.1	40.4	75.0
83	84.1	60.1	111.5
85	54.6	40.9	76.0

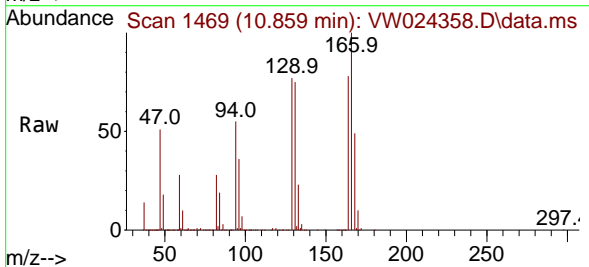
Manual Integrations

APPROVED

Reviewed By :Semsettin Yesilyurt 08/30/2022
 Supervised By :Mahesh Dadoda 08/30/2022

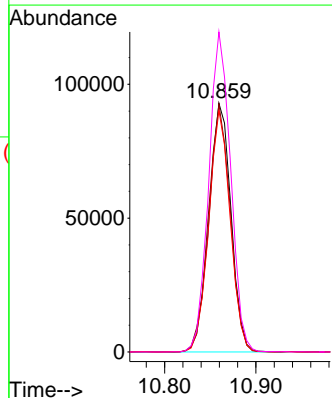
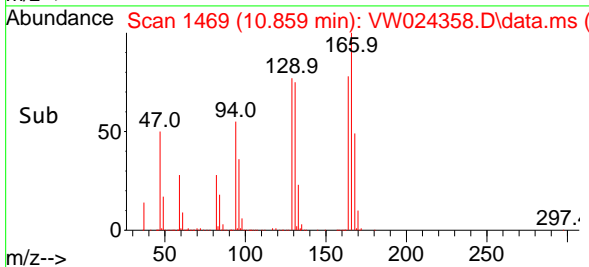


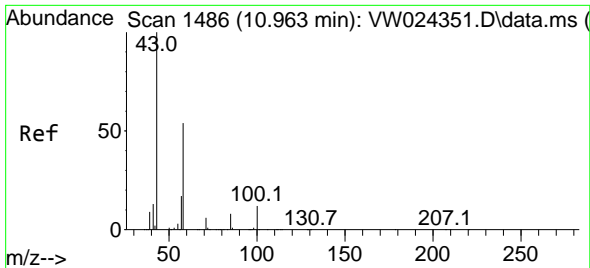
#46
 Tetrachloroethene
 Concen: 61.970 ug/L
 RT: 10.859 min Scan# 1469
 Delta R.T. -0.000 min
 Lab File: VW024358.D
 Acq: 26 Aug 2022 18:40



Tgt Ion:164 Resp: 155968

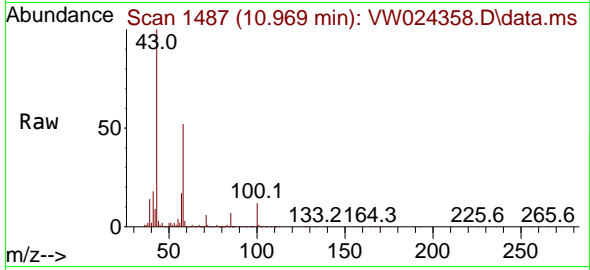
Ion	Ratio	Lower	Upper
164	100		
129	99.6	72.9	135.3
131	97.1	63.7	118.3
166	128.7	86.2	160.0





#48
 2-Hexanone
 Concen: 51.169 ug/L
 RT: 10.969 min Scan# 1487
 Delta R.T. 0.006 min
 Lab File: VW024358.D
 Acq: 26 Aug 2022 18:40

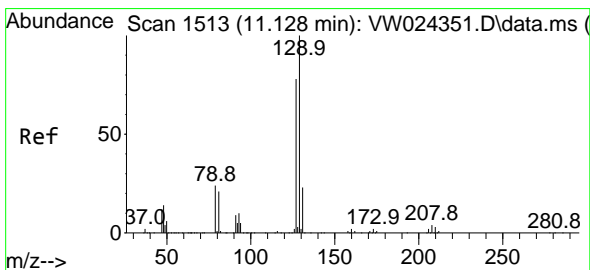
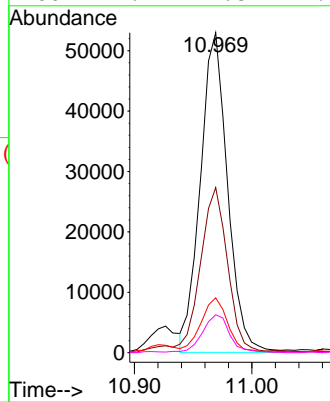
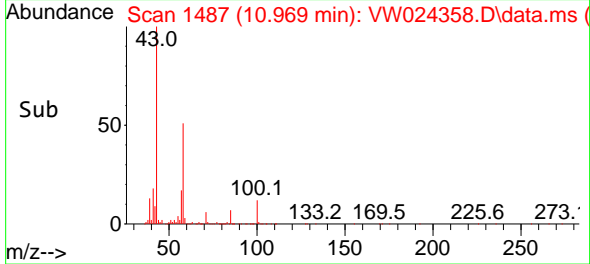
Instrument :
 MSVOA_W
 ClientSampleId :
 DBVR2MS



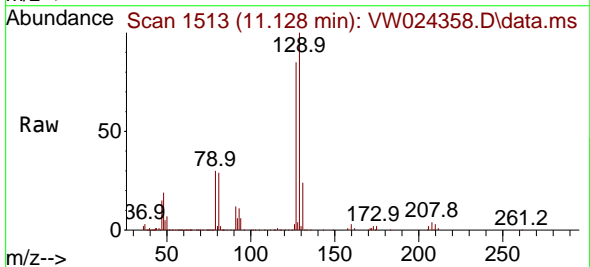
Tgt Ion: 43 Resp: 8516
 Ion Ratio Lower Upper
 43 100
 58 51.5 40.6 61.0
 57 17.0 14.2 21.2
 100 11.9 9.8 14.6

Manual Integrations
 APPROVED

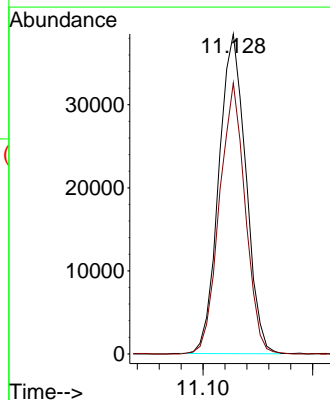
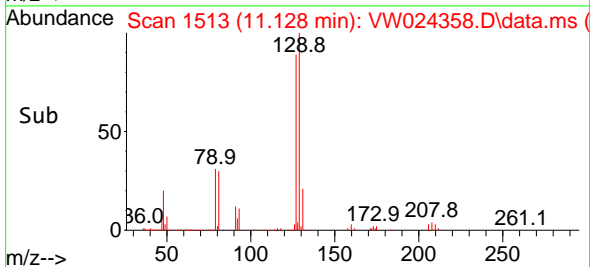
Reviewed By :Semsettin Yesilyurt 08/30/2022
 Supervised By :Mahesh Dadoda 08/30/2022

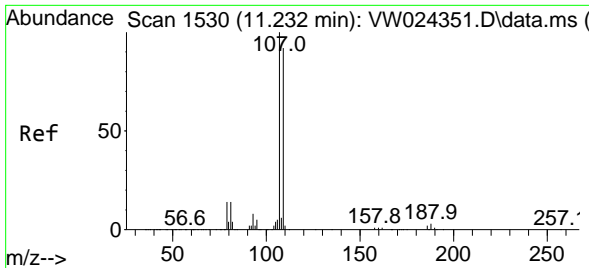


#49
 Dibromochloromethane
 Concen: 21.495 ug/L
 RT: 11.128 min Scan# 1513
 Delta R.T. -0.000 min
 Lab File: VW024358.D
 Acq: 26 Aug 2022 18:40



Tgt Ion:129 Resp: 65786
 Ion Ratio Lower Upper
 129 100
 127 84.7 54.6 101.4





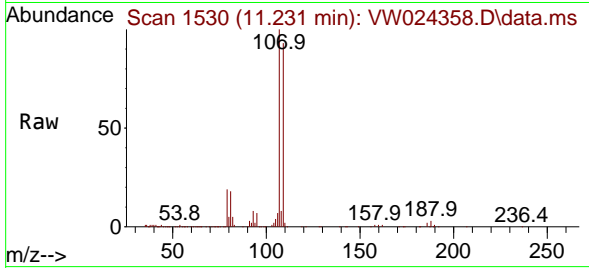
#50
 1,2-Dibromoethane
 Concen: 21.953 ug/L
 RT: 11.231 min Scan# 1530
 Delta R.T. -0.000 min
 Lab File: VW024358.D
 Acq: 26 Aug 2022 18:40

Instrument :

MSVOA_W

ClientSampleId :

DBVR2MS

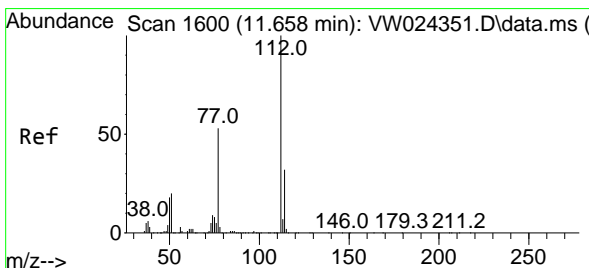
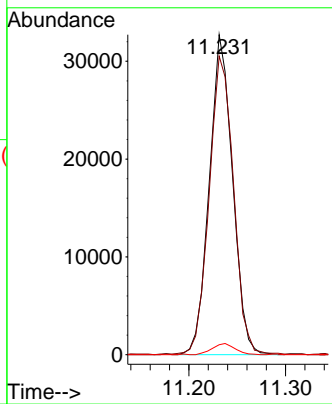
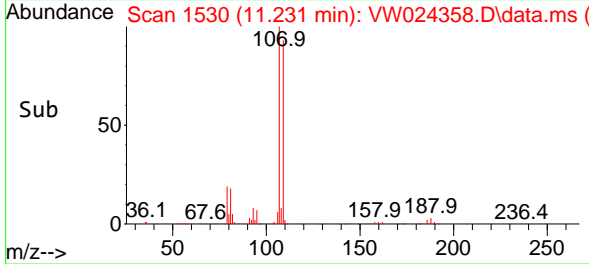


Tgt Ion:107 Resp: 5461
 Ion Ratio Lower Upper
 107 100
 109 93.3 70.1 130.1
 188 3.1 2.6 3.8

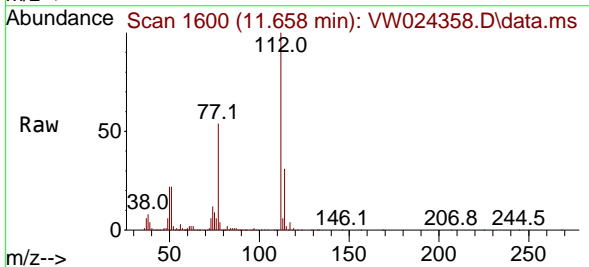
Manual Integrations

APPROVED

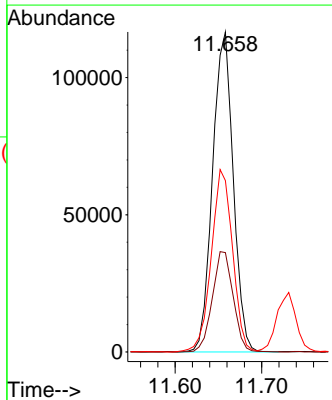
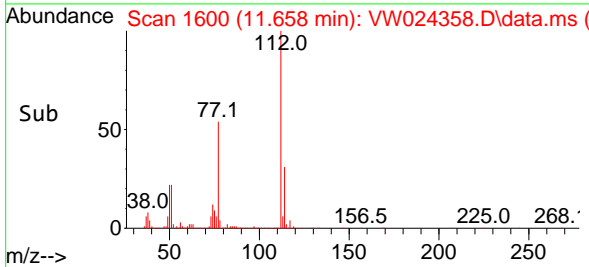
Reviewed By :Semsettin Yesilyurt 08/30/2022
 Supervised By :Mahesh Dadoda 08/30/2022

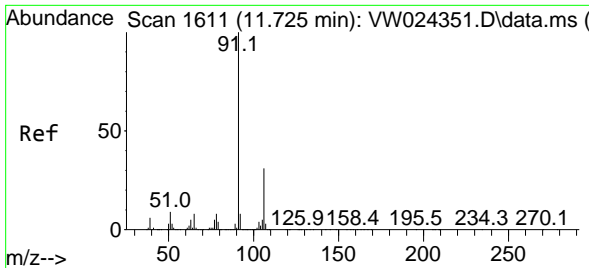


#51
 Chlorobenzene
 Concen: 21.226 ug/L
 RT: 11.658 min Scan# 1600
 Delta R.T. -0.000 min
 Lab File: VW024358.D
 Acq: 26 Aug 2022 18:40



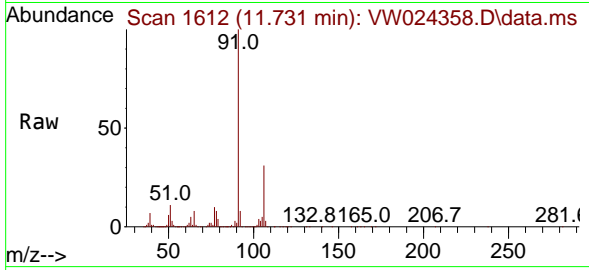
Tgt Ion:112 Resp: 193320
 Ion Ratio Lower Upper
 112 100
 114 31.1 22.3 41.3
 77 53.5 44.1 66.1





#52
 Ethylbenzene
 Concen: 22.640 ug/L
 RT: 11.731 min Scan# 1612
 Delta R.T. 0.006 min
 Lab File: VW024358.D
 Acq: 26 Aug 2022 18:40

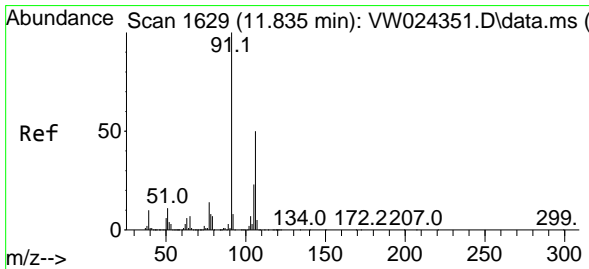
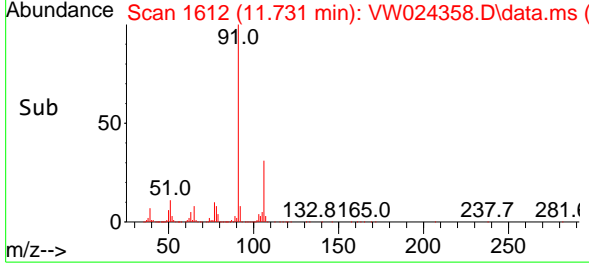
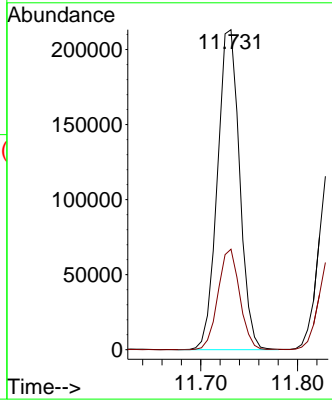
Instrument : MSVOA_W
 ClientSampleId : DBVR2MS



Tgt Ion: 91 Resp: 33965
 Ion Ratio Lower Upper
 91 100
 106 31.4 22.7 42.3

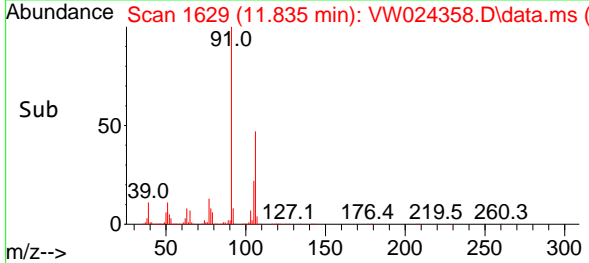
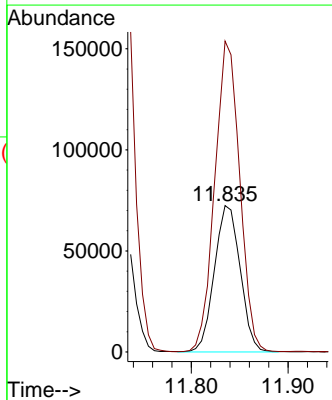
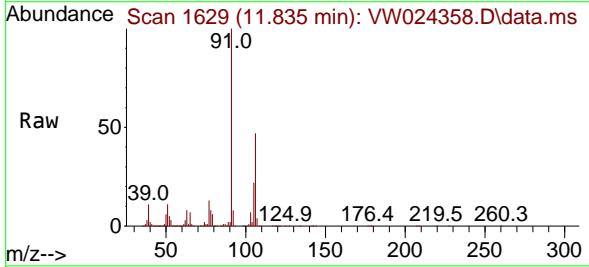
Manual Integrations
APPROVED

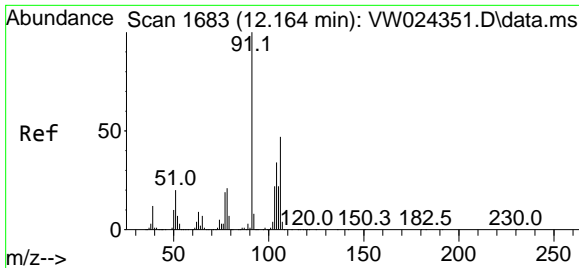
Reviewed By :Semsettin Yesilyurt 08/30/2022
 Supervised By :Mahesh Dadoda 08/30/2022



#53
 m,p-Xylene
 Concen: 22.776 ug/L
 RT: 11.835 min Scan# 1629
 Delta R.T. -0.000 min
 Lab File: VW024358.D
 Acq: 26 Aug 2022 18:40

Tgt Ion:106 Resp: 134188
 Ion Ratio Lower Upper
 106 100
 91 212.3 144.3 267.9





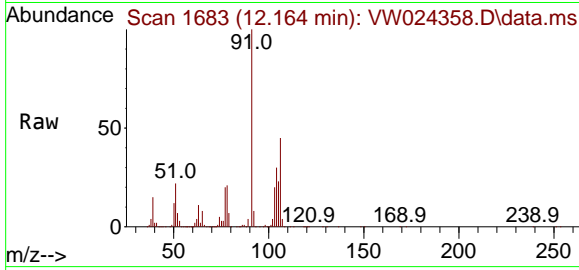
#54
 o-Xylene
 Concen: 23.485 ug/L
 RT: 12.164 min Scan# 1683
 Delta R.T. -0.000 min
 Lab File: VW024358.D
 Acq: 26 Aug 2022 18:40

Instrument :

MSVOA_W

ClientSampleId :

DBVR2MS

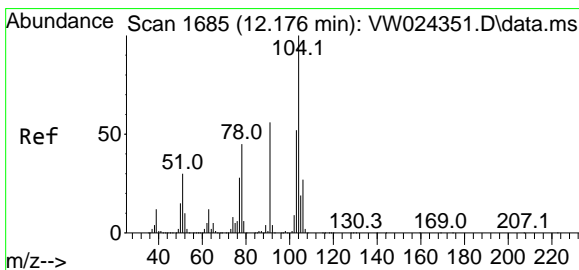
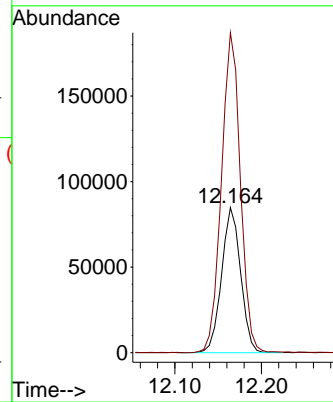
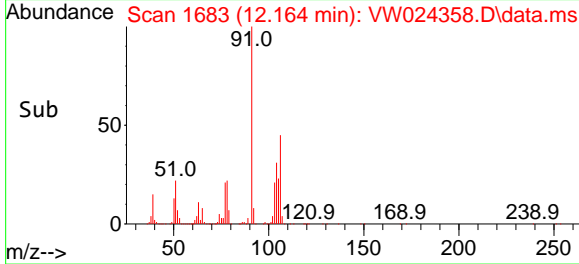


Tgt Ion:106 Resp: 12934
 Ion Ratio Lower Upper
 106 100
 91 220.6 152.1 282.5

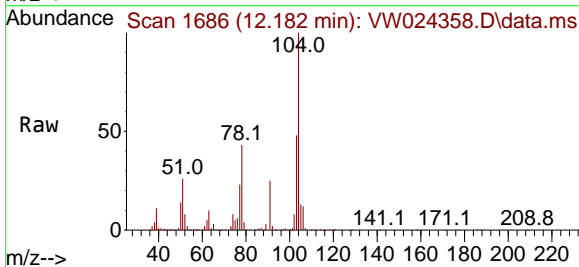
Manual Integrations

APPROVED

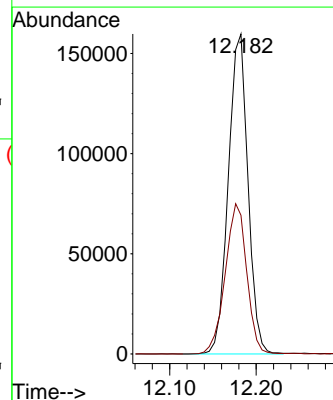
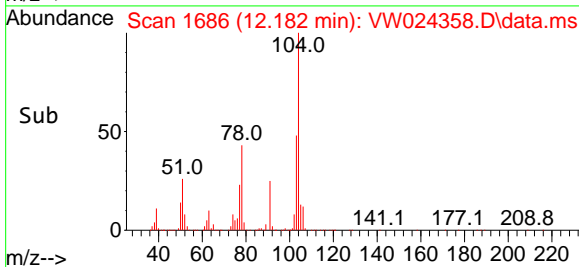
Reviewed By :Semsettin Yesilyurt 08/30/2022
 Supervised By :Mahesh Dadoda 08/30/2022

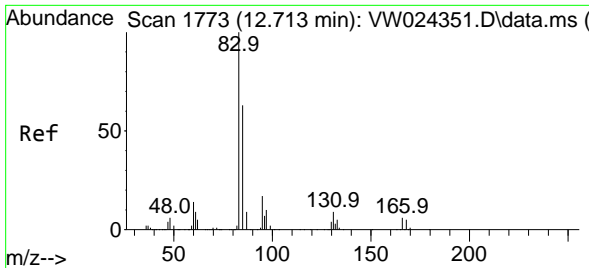


#55
 Styrene
 Concen: 25.814 ug/L
 RT: 12.182 min Scan# 1686
 Delta R.T. 0.006 min
 Lab File: VW024358.D
 Acq: 26 Aug 2022 18:40



Tgt Ion:104 Resp: 251315
 Ion Ratio Lower Upper
 104 100
 78 43.4 32.0 59.4





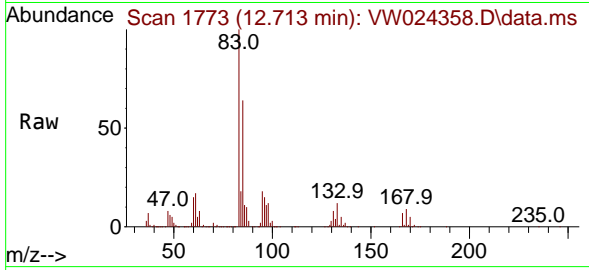
#57
 1,1,2,2-Tetrachloroethane
 Concen: 23.716 ug/L
 RT: 12.713 min Scan# 1773
 Delta R.T. -0.000 min
 Lab File: VW024358.D
 Acq: 26 Aug 2022 18:40

Instrument :

MSVOA_W

ClientSampleId :

DBVR2MS



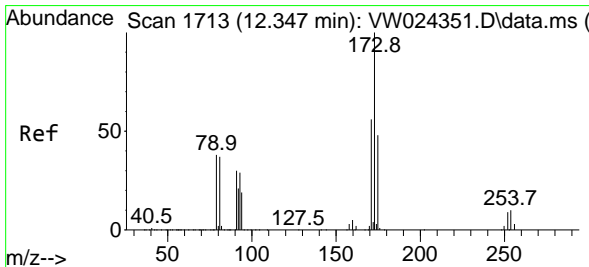
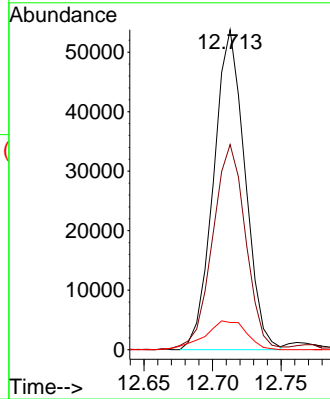
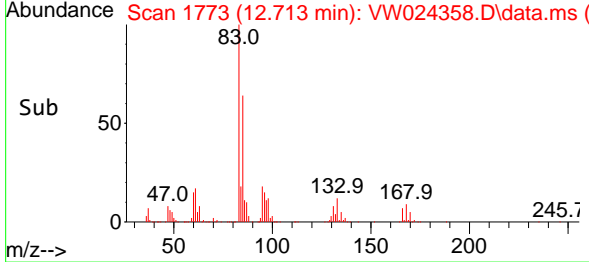
Tgt Ion: 83 Resp: 8565

Ion	Ratio	Lower	Upper
83	100		
85	64.1	44.4	82.5
131	8.5	8.4	12.6

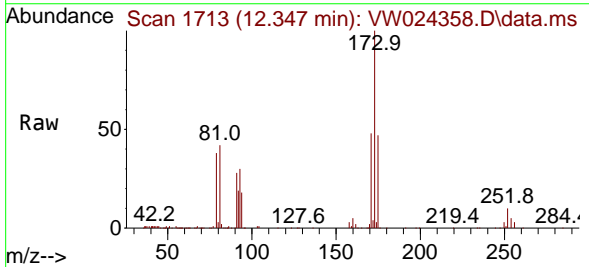
Manual Integrations

APPROVED

Reviewed By :Semsettin Yesilyurt 08/30/2022
 Supervised By :Mahesh Dadoda 08/30/2022

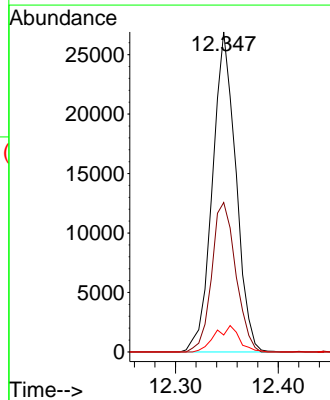
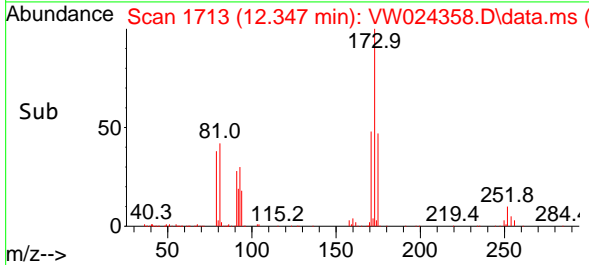


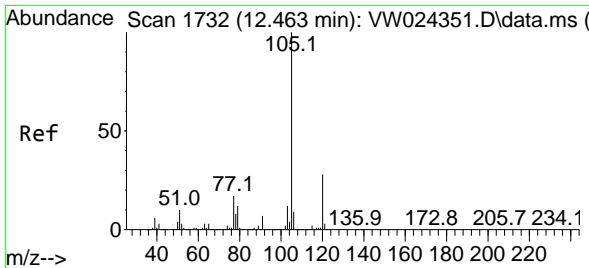
#59
 Bromoform
 Concen: 20.697 ug/L
 RT: 12.347 min Scan# 1713
 Delta R.T. -0.000 min
 Lab File: VW024358.D
 Acq: 26 Aug 2022 18:40



Tgt Ion:173 Resp: 42458

Ion	Ratio	Lower	Upper
173	100		
175	48.0	39.8	59.6
254	8.6	6.8	10.2





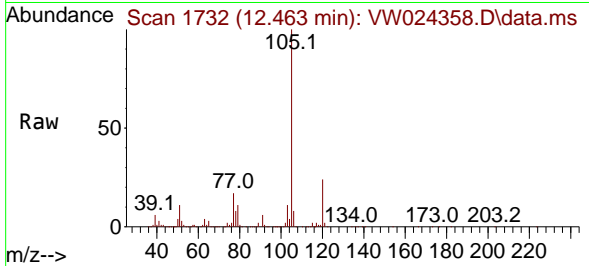
#60
 Isopropylbenzene
 Concen: 21.298 ug/L
 RT: 12.463 min Scan# 1732
 Delta R.T. -0.000 min
 Lab File: VW024358.D
 Acq: 26 Aug 2022 18:40

Instrument :

MSVOA_W

ClientSampleId :

DBVR2MS

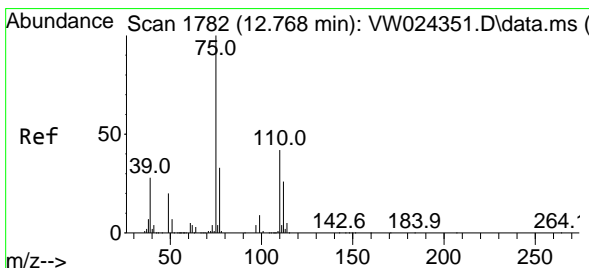
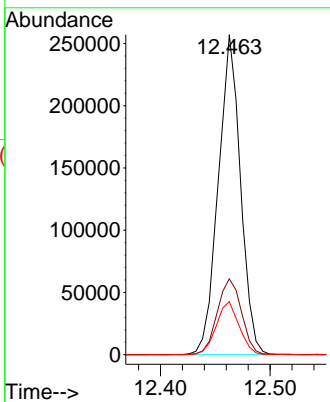
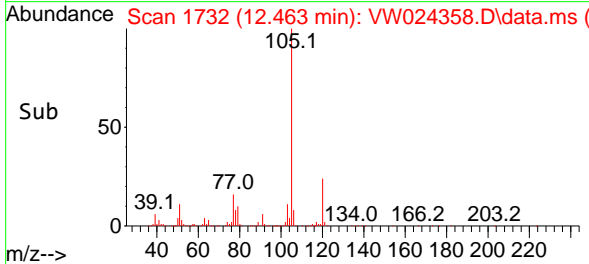


Tgt Ion:105 Resp: 36159
 Ion Ratio Lower Upper
 105 100
 120 25.8 21.4 32.0
 77 17.1 13.0 19.6

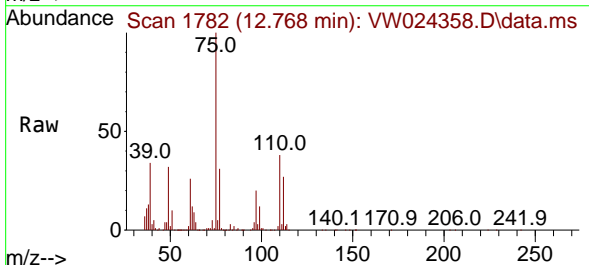
Manual Integrations

APPROVED

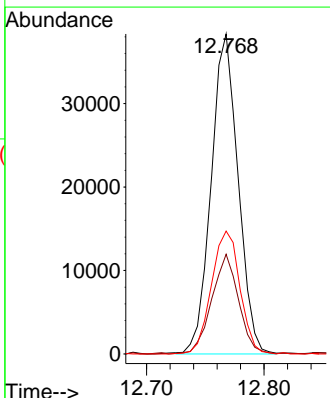
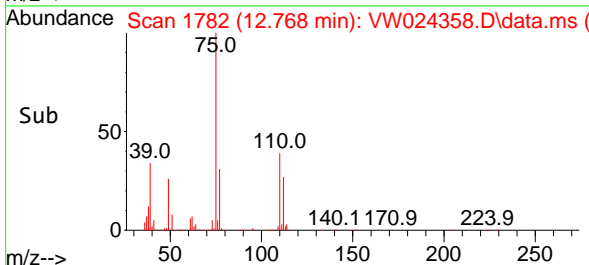
Reviewed By :Semsettin Yesilyurt 08/30/2022
 Supervised By :Mahesh Dadoda 08/30/2022

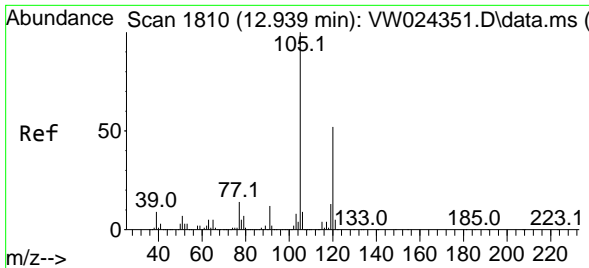


#61
 1,2,3-Trichloropropane
 Concen: 21.166 ug/L
 RT: 12.768 min Scan# 1782
 Delta R.T. -0.000 min
 Lab File: VW024358.D
 Acq: 26 Aug 2022 18:40



Tgt Ion: 75 Resp: 61185
 Ion Ratio Lower Upper
 75 100
 77 31.0 26.5 39.7
 110 40.5 33.8 50.8





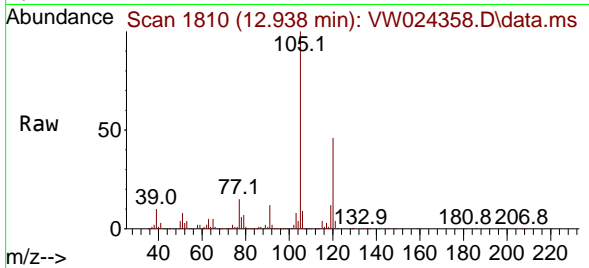
#62
 1,3,5-Trimethylbenzene
 Concen: 21.474 ug/L
 RT: 12.938 min Scan# 1810
 Delta R.T. -0.000 min
 Lab File: VW024358.D
 Acq: 26 Aug 2022 18:40

Instrument :

MSVOA_W

ClientSampleId :

DBVR2MS

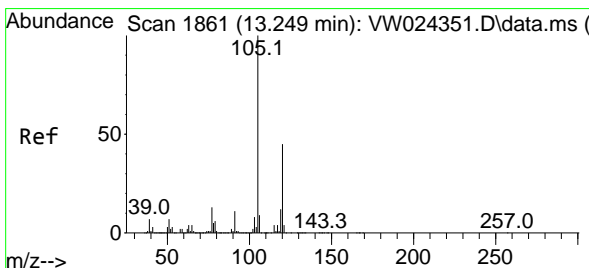
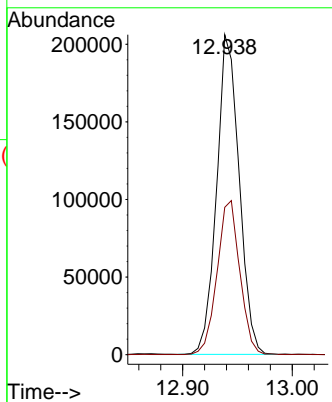
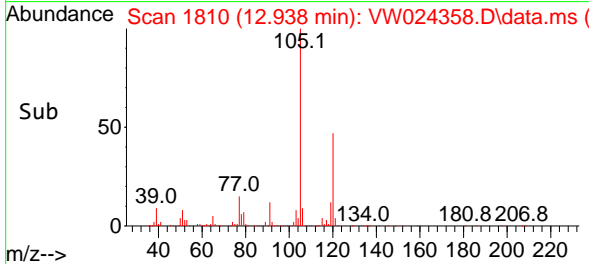


Tgt Ion:105 Resp: 293980
 Ion Ratio Lower Upper
 105 100
 120 48.6 38.4 57.6

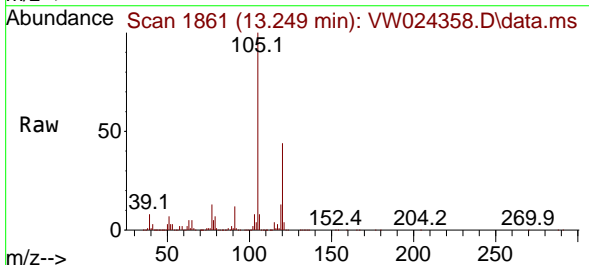
Manual Integrations

APPROVED

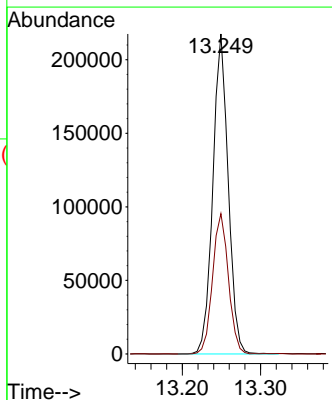
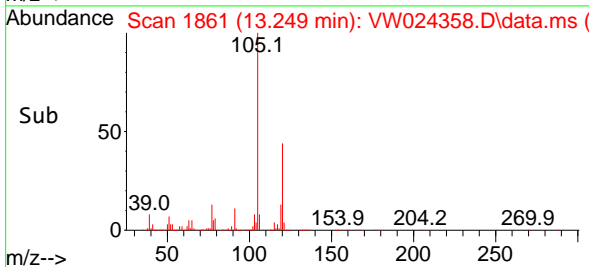
Reviewed By :Semsettin Yesilyurt 08/30/2022
 Supervised By :Mahesh Dadoda 08/30/2022

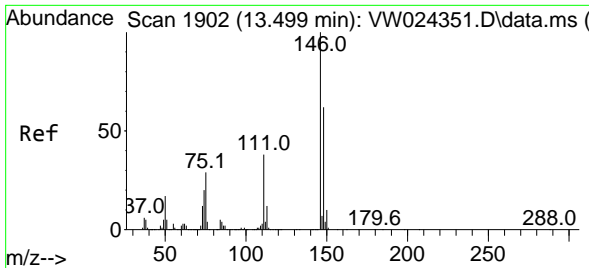


#63
 1,2,4-Trimethylbenzene
 Concen: 22.301 ug/L
 RT: 13.249 min Scan# 1861
 Delta R.T. -0.000 min
 Lab File: VW024358.D
 Acq: 26 Aug 2022 18:40



Tgt Ion:105 Resp: 296544
 Ion Ratio Lower Upper
 105 100
 120 45.1 36.2 54.2





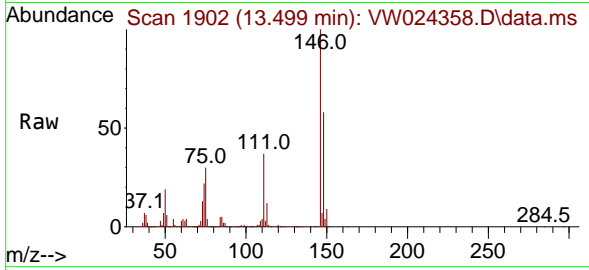
#64
 1,3-Dichlorobenzene
 Concen: 19.656 ug/L
 RT: 13.499 min Scan# 1902
 Delta R.T. -0.000 min
 Lab File: VW024358.D
 Acq: 26 Aug 2022 18:40

Instrument :

MSVOA_W

ClientSampleId :

DBVR2MS

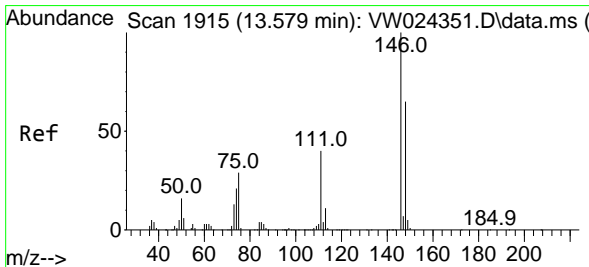
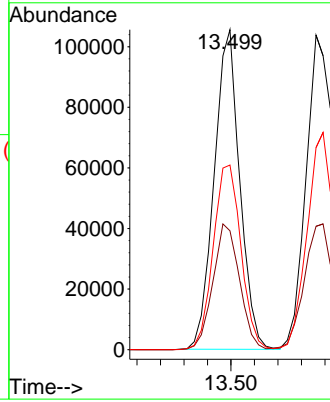
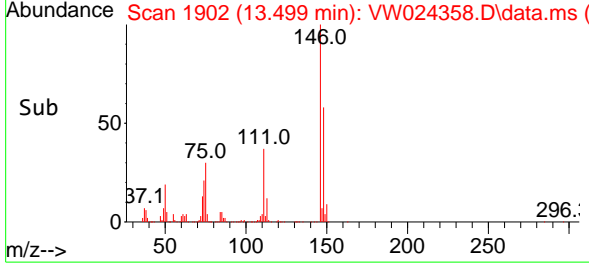


Tgt Ion:146 Resp: 15955
 Ion Ratio Lower Upper
 146 100
 111 37.1 27.0 50.2
 148 57.7 44.9 83.3

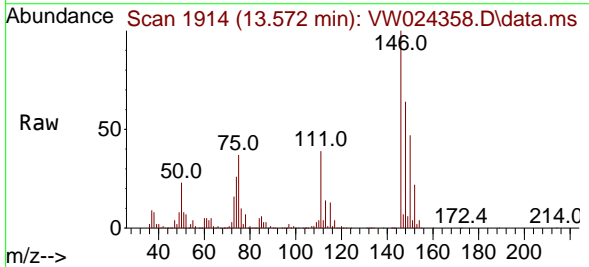
Manual Integrations

APPROVED

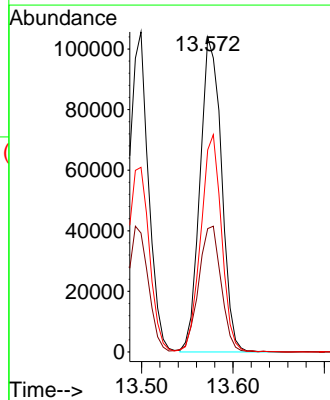
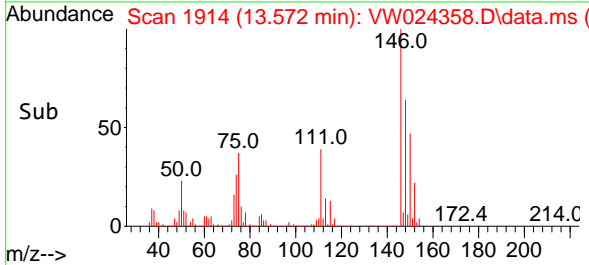
Reviewed By :Semsettin Yesilyurt 08/30/2022
 Supervised By :Mahesh Dadoda 08/30/2022

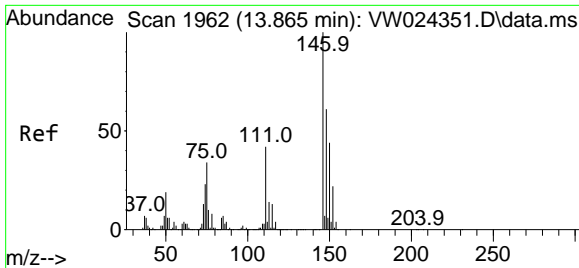


#65
 1,4-Dichlorobenzene
 Concen: 19.781 ug/L
 RT: 13.572 min Scan# 1914
 Delta R.T. -0.006 min
 Lab File: VW024358.D
 Acq: 26 Aug 2022 18:40



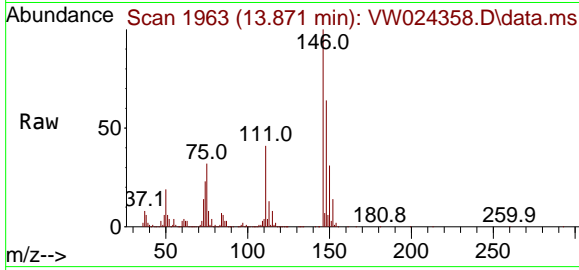
Tgt Ion:146 Resp: 169530
 Ion Ratio Lower Upper
 146 100
 111 39.2 27.7 51.5
 148 64.2 46.5 86.5





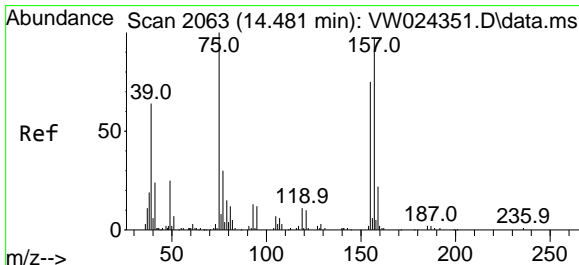
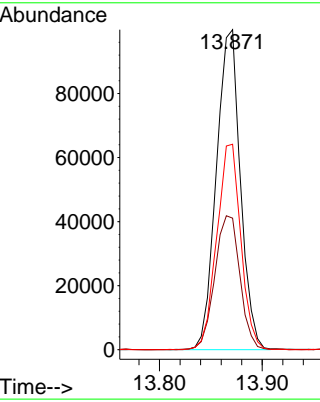
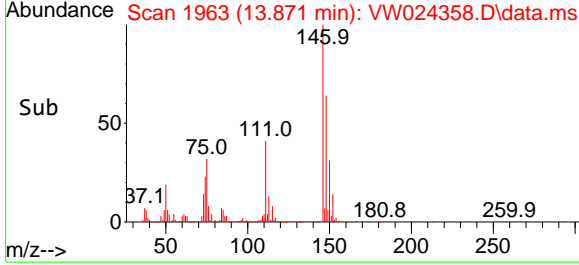
#67
 1,2-Dichlorobenzene
 Concen: 21.328 ug/L
 RT: 13.871 min Scan# 1963
 Delta R.T. 0.006 min
 Lab File: VW024358.D
 Acq: 26 Aug 2022 18:40

Instrument : MSVOA_W
 ClientSampleId : DBVR2MS

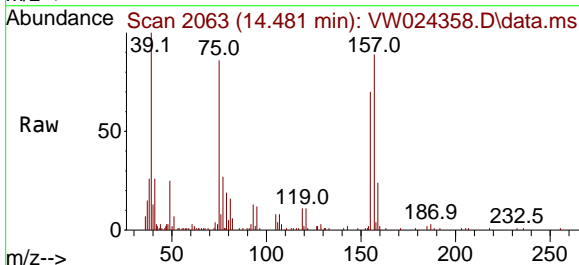


Tgt Ion:146 Resp: 16228
 Ion Ratio Lower Upper
 146 100
 111 41.1 34.5 51.7
 148 64.2 50.6 75.8

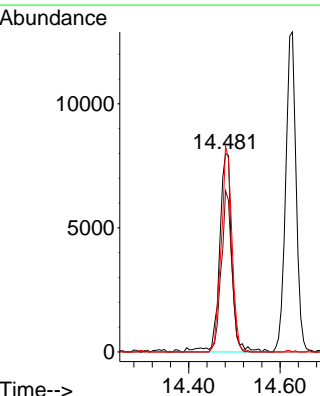
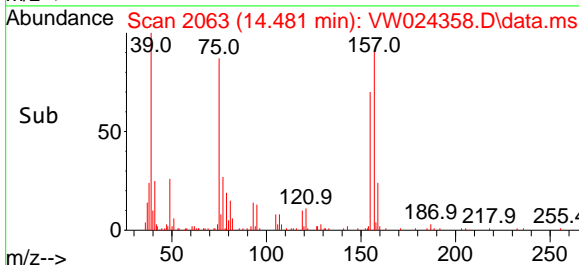
Manual Integrations
APPROVED
 Reviewed By :Semsettin Yesilyurt 08/30/2022
 Supervised By :Mahesh Dadoda 08/30/2022

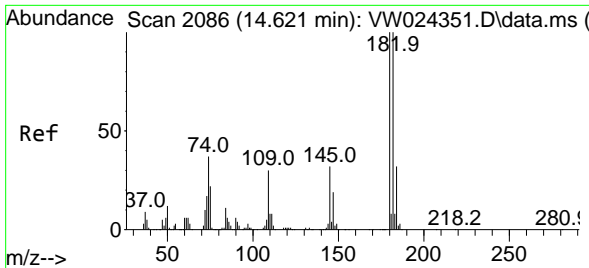


#68
 1,2-Dibromo-3-chloropropane
 Concen: 20.378 ug/L
 RT: 14.481 min Scan# 2063
 Delta R.T. -0.000 min
 Lab File: VW024358.D
 Acq: 26 Aug 2022 18:40



Tgt Ion: 75 Resp: 14800
 Ion Ratio Lower Upper
 75 100
 155 81.2 63.9 95.9
 157 103.7 72.2 108.4





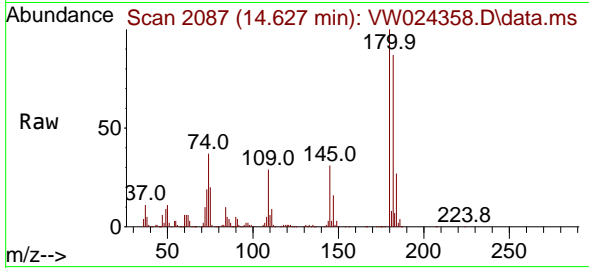
#69
 1,3,5-Trichlorobenzene
 Concen: 18.648 ug/L
 RT: 14.627 min Scan# 2086
 Delta R.T. 0.006 min
 Lab File: VW024358.D
 Acq: 26 Aug 2022 18:40

Instrument :

MSVOA_W

ClientSampleId :

DBVR2MS



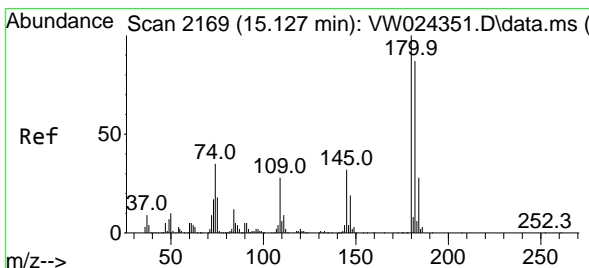
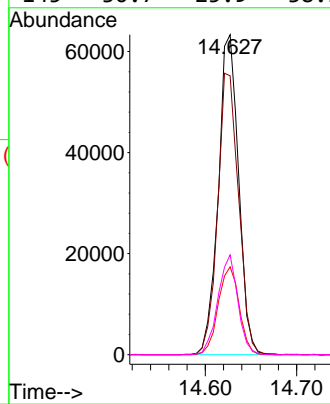
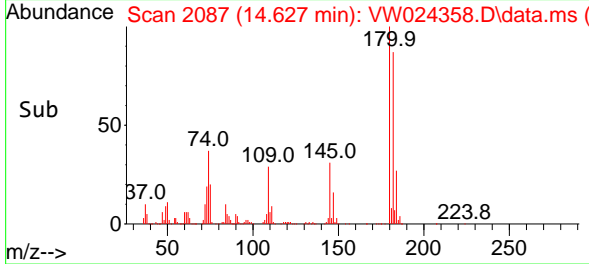
Tgt Ion:180 Resp: 9770

Ion	Ratio	Lower	Upper
180	100		
182	90.6	76.6	114.8
184	28.4	24.5	36.7
145	30.7	25.9	38.9

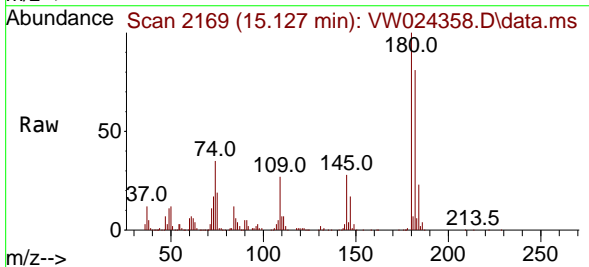
Manual Integrations

APPROVED

Reviewed By :Semsettin Yesilyurt 08/30/2022
 Supervised By :Mahesh Dadoda 08/30/2022

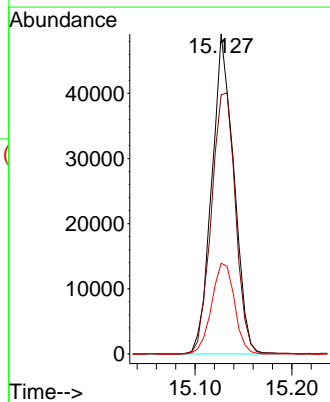
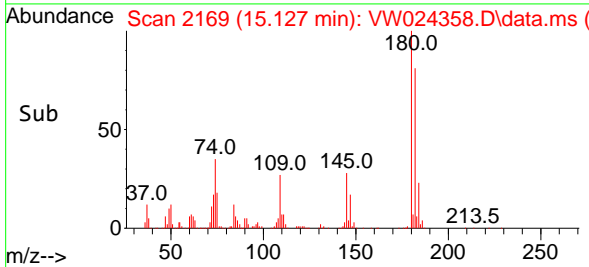


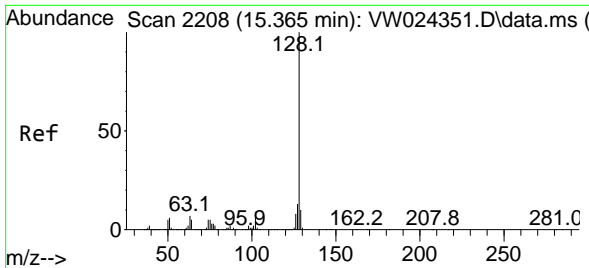
#70
 1,2,4-trichlorobenzene
 Concen: 19.091 ug/L
 RT: 15.127 min Scan# 2169
 Delta R.T. -0.000 min
 Lab File: VW024358.D
 Acq: 26 Aug 2022 18:40



Tgt Ion:180 Resp: 77756

Ion	Ratio	Lower	Upper
180	100		
182	89.5	72.6	109.0
145	29.4	26.2	39.2





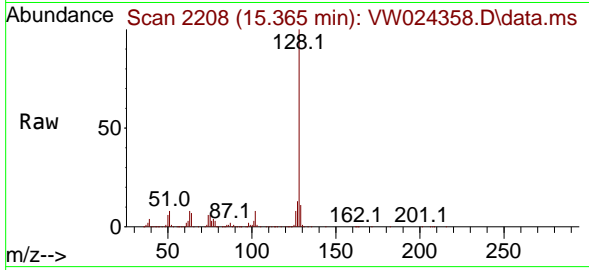
#71
 Naphthalene
 Concen: 20.051 ug/L
 RT: 15.365 min Scan# 2111
 Delta R.T. -0.000 min
 Lab File: VW024358.D
 Acq: 26 Aug 2022 18:40

Instrument :

MSVOA_W

ClientSampleId :

DBVR2MS

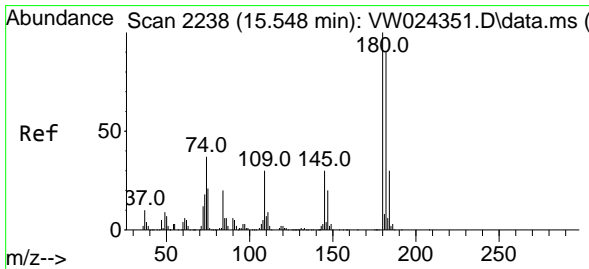
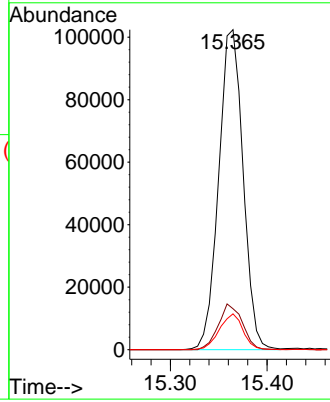
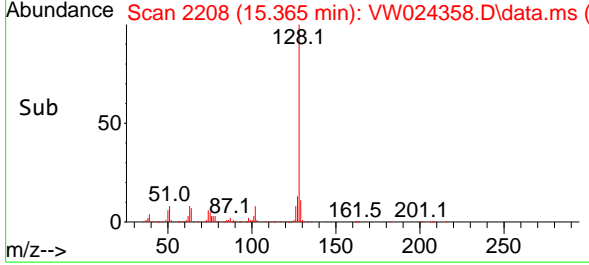


Tgt Ion:128 Resp: 17935
 Ion Ratio Lower Upper
 128 100
 127 14.1 10.5 15.7
 129 10.8 8.3 12.5

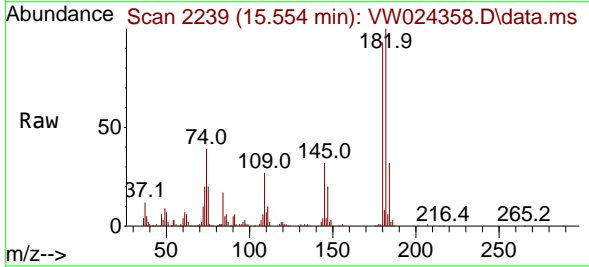
Manual Integrations

APPROVED

Reviewed By :Semsettin Yesilyurt 08/30/2022
 Supervised By :Mahesh Dadoda 08/30/2022



#72
 1,2,3-Trichlorobenzene
 Concen: 17.572 ug/L
 RT: 15.554 min Scan# 2239
 Delta R.T. 0.006 min
 Lab File: VW024358.D
 Acq: 26 Aug 2022 18:40



Tgt Ion:180 Resp: 67642
 Ion Ratio Lower Upper
 180 100
 182 104.3 74.6 111.8
 145 35.1 26.6 40.0

