

Data Path : Z:\voasrv\HPCHEM1\MSVOA_W\Data\VW082622\
 Data File : VW024397.D
 Acq On : 27 Aug 2022 13:40
 Operator : SY/VA
 Sample : N4363-12MS
 Misc : 5.35g/10mL/MSVOA_W/SOIL
 ALS Vial : 1 Sample Multiplier: 1

Instrument :
 MSVOA_W
 ClientSampleId :
 DBVW6MS

Manual Integrations
 APPROVED

Reviewed By : Semsettin Yesilyurt 08/30/2022
 Supervised By : Mahesh Dadoda 08/30/2022

Quant Time: Aug 29 01:47:23 2022
 Quant Method : Z:\voasrv\HPCHEM1\MSVOA_W\Method\SFAMWLM082622SMA.M
 Quant Title : SFAM01.0
 QLast Update : Mon Aug 29 01:46:03 2022
 Response via : Initial Calibration

Compound	R.T.	QIon	Response	Conc	Units	Dev(Min)
Internal Standards						
1) 1,4-Difluorobenzene	8.842	114	361739	25.000	ug/L	0.00
28) Chlorobenzene-d5	11.628	117	378536	25.000	ug/L	0.00
58) 1,4-Dichlorobenzene-d4	13.554	152	208433	25.000	ug/L	0.00
System Monitoring Compounds						
4) Vinyl Chloride-d3	2.343	65	197544	19.811	ug/L	0.00
Spiked Amount	25.000	Range 30 - 150	Recovery =	79.240%		
7) Chloroethane-d5	2.873	69	165093	22.097	ug/L	0.00
Spiked Amount	25.000	Range 30 - 150	Recovery =	88.400%		
11) 1,1-Dichloroethene-d2	4.013	63	221812	25.648	ug/L	0.00
Spiked Amount	25.000	Range 45 - 110	Recovery =	102.600%		
21) 2-Butanone-d5	7.074	46	108927	59.307	ug/L	0.00
Spiked Amount	50.000	Range 20 - 135	Recovery =	118.620%		
24) Chloroform-d	7.647	84	329754	28.355	ug/L	0.00
Spiked Amount	25.000	Range 40 - 150	Recovery =	113.400%		
26) 1,2-Dichloroethane-d4	8.305	65	198053	28.082	ug/L	0.00
Spiked Amount	25.000	Range 70 - 130	Recovery =	112.320%		
32) Benzene-d6	8.268	84	614273	28.323	ug/L	0.00
Spiked Amount	25.000	Range 20 - 135	Recovery =	113.280%		
36) 1,2-Dichloropropane-d6	9.274	67	197782	29.323	ug/L	0.00
Spiked Amount	25.000	Range 70 - 120	Recovery =	117.280%		
41) Toluene-d8	10.323	98	577041	27.983	ug/L	0.00
Spiked Amount	25.000	Range 30 - 130	Recovery =	111.920%		
43) trans-1,3-Dichloroprop...	10.573	79	85546	27.102	ug/L	0.00
Spiked Amount	25.000	Range 30 - 135	Recovery =	108.400%		
47) 2-Hexanone-d5	10.920	63	94857	62.844	ug/L	0.00
Spiked Amount	50.000	Range 20 - 135	Recovery =	125.680%		
56) 1,1,2,2-Tetrachloroeth...	12.688	84	219037	28.683	ug/L	0.00
Spiked Amount	25.000	Range 45 - 120	Recovery =	114.720%		
66) 1,2-Dichlorobenzene-d4	13.853	152	218626	27.854	ug/L	0.00
Spiked Amount	25.000	Range 75 - 120	Recovery =	111.400%		
Target Compounds						
2) Dichlorodifluoromethane	2.001	85	42516	11.735	ug/L	99
3) Chloromethane	2.215	50	90190	13.324	ug/L	99
5) Vinyl chloride	2.349	62	186961	15.800	ug/L	99
6) Bromomethane	2.763	94	132237	15.921	ug/L	97
8) Chloroethane	2.904	64	104594	16.920	ug/L	97
9) Trichlorofluoromethane	3.245	101	85122	15.297	ug/L	99
10) 1,1,2-Trichloro-1,2,2-...	4.050	101	107786	20.195	ug/L	98
12) 1,1-Dichloroethene	4.031	96	95663m	22.140	ug/L	
13) Acetone	4.117	43	50146	45.751	ug/L	96
14) Carbon disulfide	4.373	76	294574	20.513	ug/L	99
15) Methyl Acetate	4.665	43	54604	20.364	ug/L	98
16) Methylene chloride	4.909	84	131193	21.625	ug/L	92
17) trans-1,2-Dichloroethene	5.415	96	116404	22.760	ug/L	96
18) Methyl tert-butyl Ether	5.428	73	192987	23.045	ug/L	97
19) 1,1-Dichloroethane	6.214	63	212555	21.978	ug/L	94
20) cis-1,2-Dichloroethene	7.165	96	173998m	30.937	ug/L	
22) 2-Butanone	7.171	43	83554	42.726	ug/L	100
23) Bromochloromethane	7.513	128	60288	21.953	ug/L	98
25) Chloroform	7.671	83	232851	21.701	ug/L	92

Data Path : Z:\voasrv\HPCHEM1\MSVOA_W\Data\VW082622\
 Data File : VW024397.D
 Acq On : 27 Aug 2022 13:40
 Operator : SY/VA
 Sample : N4363-12MS
 Misc : 5.35g/10mL/MSVOA_W/SOIL
 ALS Vial : 1 Sample Multiplier: 1

Instrument :
 MSVOA_W
 ClientSampleId :
 DBVW6MS

Manual Integrations
 APPROVED

Reviewed By :Semsettin Yesilyurt 08/30/2022
 Supervised By :Mahesh Dadoda 08/30/2022

Quant Time: Aug 29 01:47:23 2022
 Quant Method : Z:\voasrv\HPCHEM1\MSVOA_W\Method\SFAMWLM082622SMA.M
 Quant Title : SFAM01.0
 QLast Update : Mon Aug 29 01:46:03 2022
 Response via : Initial Calibration

Compound	R.T.	QIon	Response	Conc	Units	Dev(Min)
27) 1,2-Dichloroethane	8.397	62	164515	21.063	ug/L	96
29) Cyclohexane	7.951	56	182964	22.420	ug/L	98
30) 1,1,1-Trichloroethane	7.866	97	180657	20.243	ug/L	98
31) Carbon tetrachloride	8.067	117	167228	20.482	ug/L	99
33) Benzene	8.323	78	516578	21.919	ug/L	100
34) Trichloroethene	9.092	95	147345	23.721	ug/L	95
35) Methylcyclohexane	9.329	83	205706	20.641	ug/L	99
37) 1,2-Dichloropropane	9.366	63	128944	21.201	ug/L	98
38) Bromodichloromethane	9.640	83	174615	21.082	ug/L	99
39) cis-1,3-Dichloropropene	10.073	75	198052	23.295	ug/L	99
40) 4-Methyl-2-pentanone	10.207	43	187076	43.256	ug/L	98
42) Toluene	10.384	91	571666	21.979	ug/L	97
44) trans-1,3-Dichloropropene	10.603	75	177583	21.496	ug/L	98
45) 1,1,2-Trichloroethane	10.786	97	106019	21.376	ug/L	96
46) Tetrachloroethene	10.859	164	961925	199.398	ug/L	97
48) 2-Hexanone	10.969	43	131814	41.320	ug/L	97
49) Dibromochloromethane	11.128	129	125363	21.370	ug/L	100
50) 1,2-Dibromoethane	11.231	107	103779	21.764	ug/L	100
51) Chlorobenzene	11.652	112	366447	20.991	ug/L	98
52) Ethylbenzene	11.731	91	634969	22.082	ug/L	99
53) m,p-Xylene	11.835	106	246307	21.811	ug/L	98
54) o-Xylene	12.164	106	239369	22.674	ug/L	99
55) Styrene	12.176	104	419985	22.506	ug/L	98
57) 1,1,2,2-Tetrachloroethane	12.713	83	139615	20.167	ug/L	97
59) Bromoform	12.347	173	73685	22.029	ug/L	97
60) Isopropylbenzene	12.463	105	638761	23.074	ug/L	99
61) 1,2,3-Trichloropropane	12.768	75	98958	20.995	ug/L	100
62) 1,3,5-Trimethylbenzene	12.938	105	540554	24.216	ug/L	100
63) 1,2,4-Trimethylbenzene	13.243	105	525405	24.232	ug/L	99
64) 1,3-Dichlorobenzene	13.499	146	280831	21.217	ug/L	98
65) 1,4-Dichlorobenzene	13.572	146	297359	21.279	ug/L	98
67) 1,2-Dichlorobenzene	13.865	146	266632	21.490	ug/L	94
68) 1,2-Dibromo-3-chloropr...	14.481	75	21866	18.465	ug/L	95
69) 1,3,5-Trichlorobenzene	14.621	180	178199	20.859	ug/L	97
70) 1,2,4-trichlorobenzene	15.127	180	139841	21.057	ug/L	98
71) Naphthalene	15.359	128	331675	22.740	ug/L	100
72) 1,2,3-Trichlorobenzene	15.554	180	127535	20.319	ug/L	95

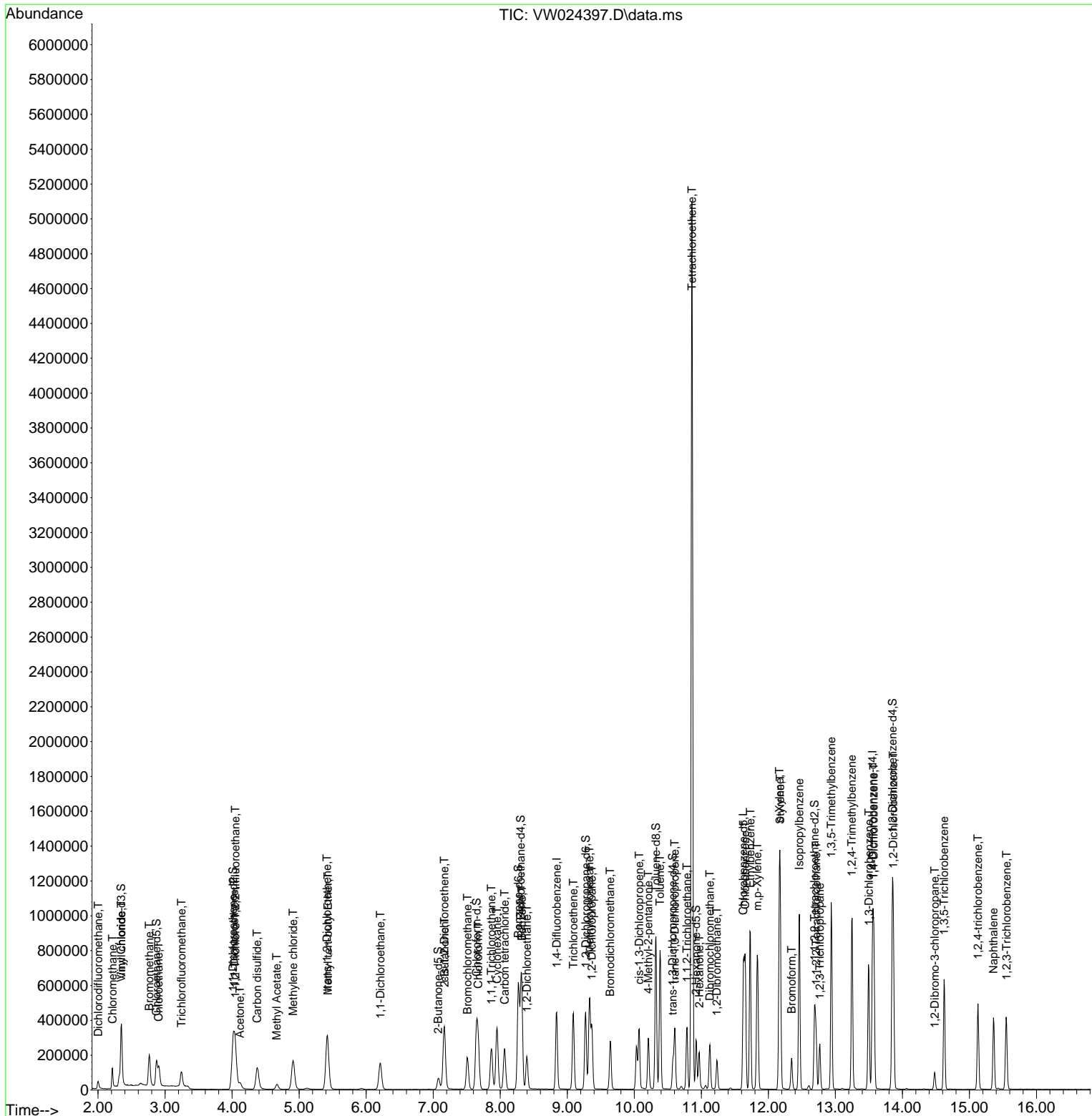
(#) = qualifier out of range (m) = manual integration (+) = signals summed

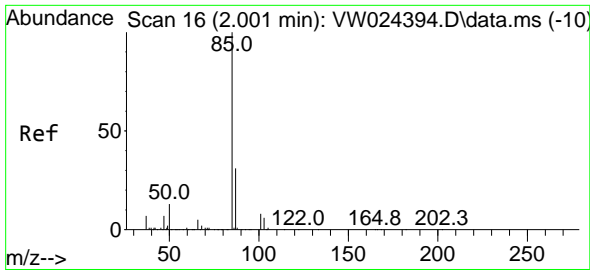
Data Path : Z:\voasrv\HPCHEM1\MSVOA_W\Data\VW082622\
 Data File : VW024397.D
 Acq On : 27 Aug 2022 13:40
 Operator : SY/VA
 Sample : N4363-12MS
 Misc : 5.35g/10mL/MSVOA_W/SOIL
 ALS Vial : 1 Sample Multiplier: 1

Instrument :
 MSVOA_W
ClientSampleId :
 DBVW6MS

Quant Time: Aug 29 01:47:23 2022
 Quant Method : Z:\voasrv\HPCHEM1\MSVOA_W\Method\SFAMWLM082622SMA.M
 Quant Title : SFAM01.0
 QLast Update : Mon Aug 29 01:46:03 2022
 Response via : Initial Calibration

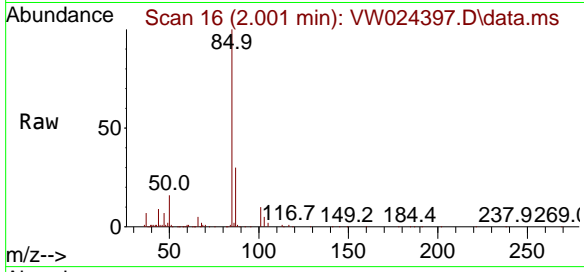
Manual Integrations
APPROVED
 Reviewed By :Semsettin Yesilyurt 08/30/2022
 Supervised By :Mahesh Dadoda 08/30/2022





#2
 Dichlorodifluoromethane
 Concen: 11.735 ug/L
 RT: 2.001 min Scan# 10
 Delta R.T. 0.000 min
 Lab File: VW024397.D
 Acq: 27 Aug 2022 13:40

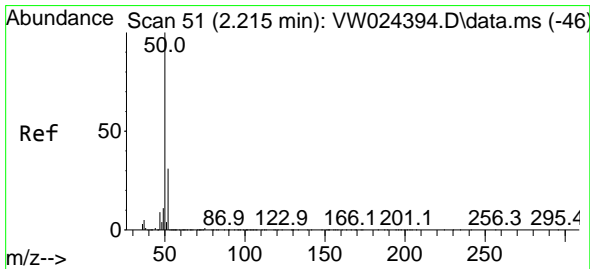
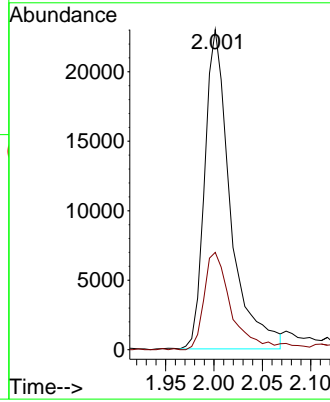
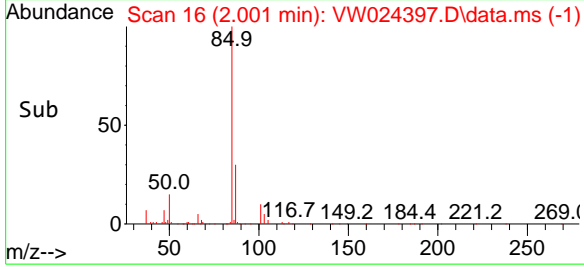
Instrument :
 MSVOA_W
 ClientSampleId :
 DBVW6MS



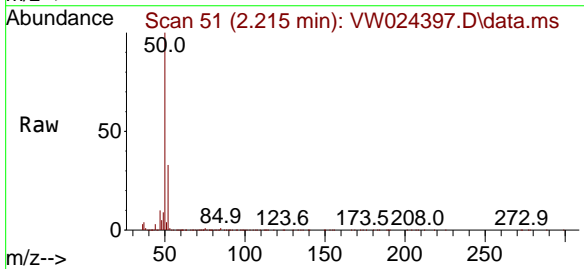
Tgt Ion: 85 Resp: 42510
 Ion Ratio Lower Upper
 85 100
 87 31.5 24.7 37.1

Manual Integrations
 APPROVED

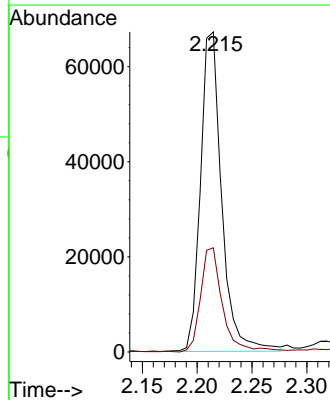
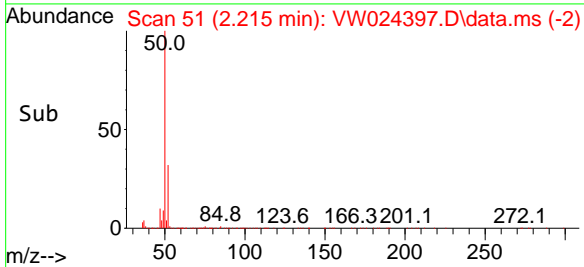
Reviewed By :Semsettin Yesilyurt 08/30/2022
 Supervised By :Mahesh Dadoda 08/30/2022

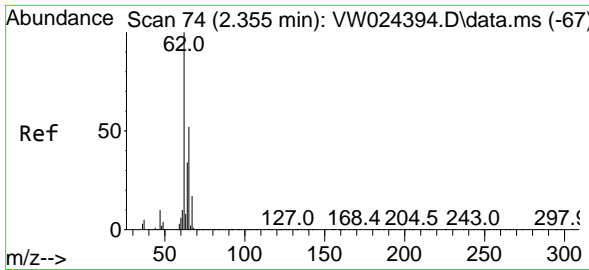


#3
 Chloromethane
 Concen: 13.324 ug/L
 RT: 2.215 min Scan# 51
 Delta R.T. 0.000 min
 Lab File: VW024397.D
 Acq: 27 Aug 2022 13:40



Tgt Ion: 50 Resp: 90190
 Ion Ratio Lower Upper
 50 100
 52 32.6 22.3 41.5





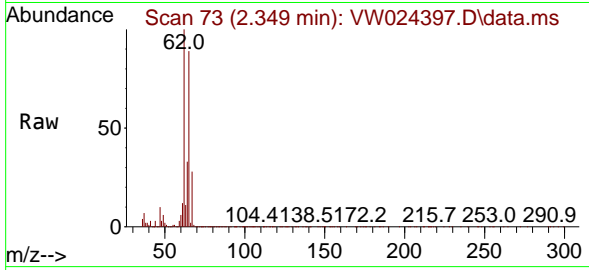
#5
 Vinyl chloride
 Concen: 15.800 ug/L
 RT: 2.349 min Scan# 71
 Delta R.T. -0.006 min
 Lab File: VW024397.D
 Acq: 27 Aug 2022 13:40

Instrument :

MSVOA_W

ClientSampleId :

DBVW6MS

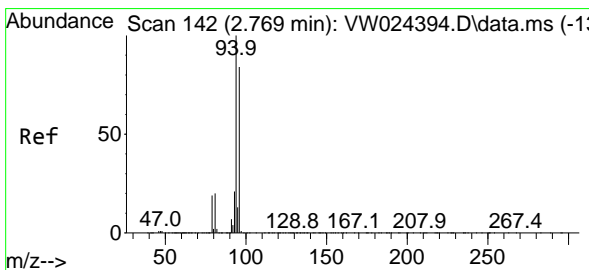
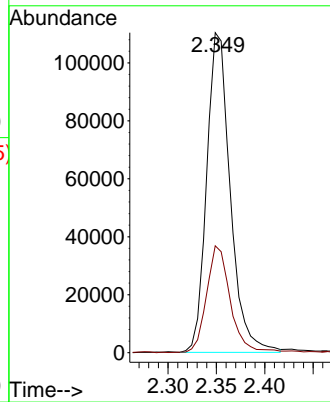
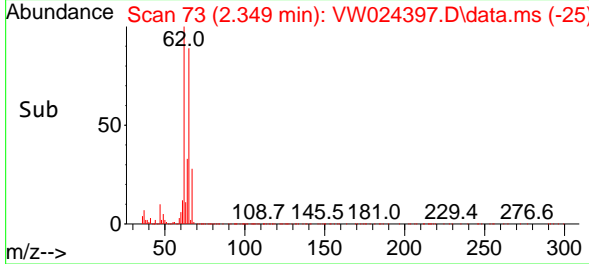


Tgt Ion: 62 Resp: 18696
 Ion Ratio Lower Upper
 62 100
 64 33.4 23.6 43.8

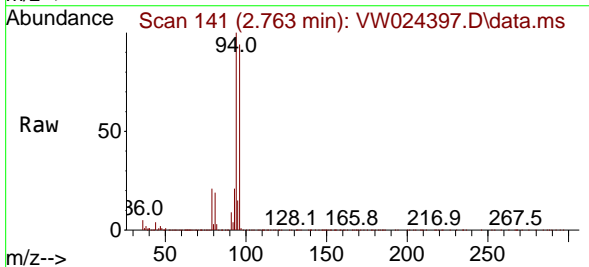
Manual Integrations

APPROVED

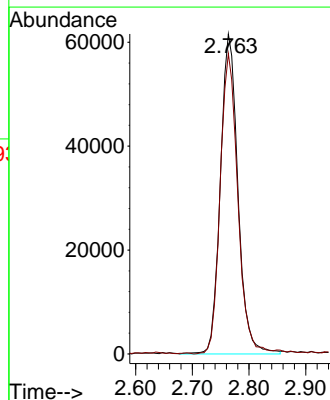
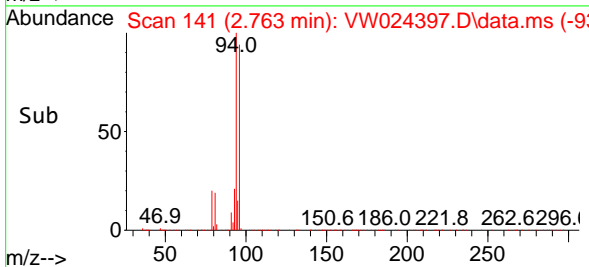
Reviewed By :Semsettin Yesilyurt 08/30/2022
 Supervised By :Mahesh Dadoda 08/30/2022

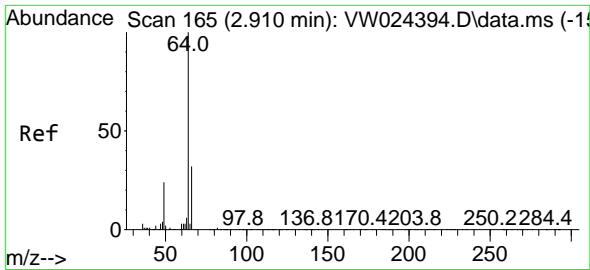


#6
 Bromomethane
 Concen: 15.921 ug/L
 RT: 2.763 min Scan# 141
 Delta R.T. -0.006 min
 Lab File: VW024397.D
 Acq: 27 Aug 2022 13:40



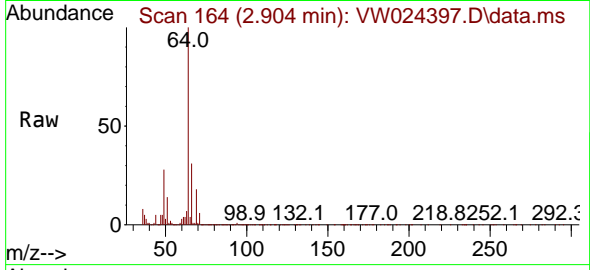
Tgt Ion: 94 Resp: 132237
 Ion Ratio Lower Upper
 94 100
 96 93.8 63.6 118.0





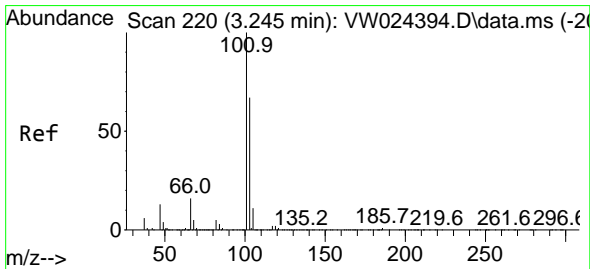
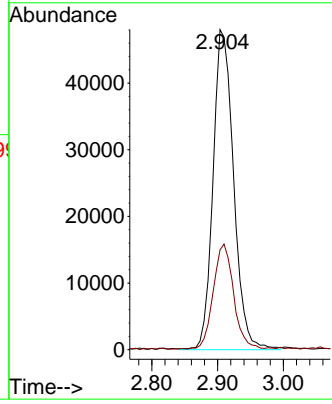
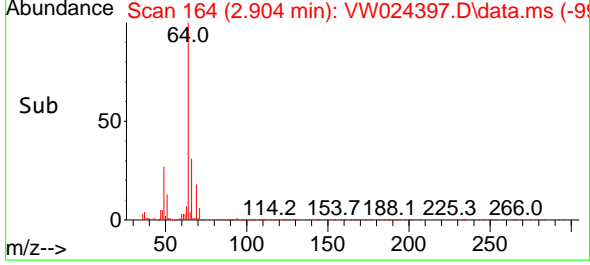
#8
 Chloroethane
 Concen: 16.920 ug/L
 RT: 2.904 min Scan# 164
 Delta R.T. -0.006 min
 Lab File: VW024397.D
 Acq: 27 Aug 2022 13:40

Instrument : MSVOA_W
 Client Sample Id : DBVW6MS

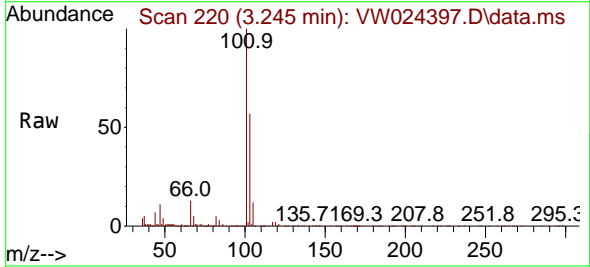


Tgt Ion: 64 Resp: 104594
 Ion Ratio Lower Upper
 64 100
 66 31.2 23.0 42.6

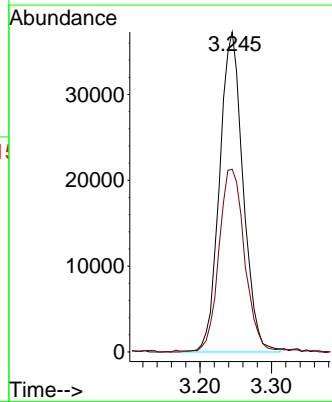
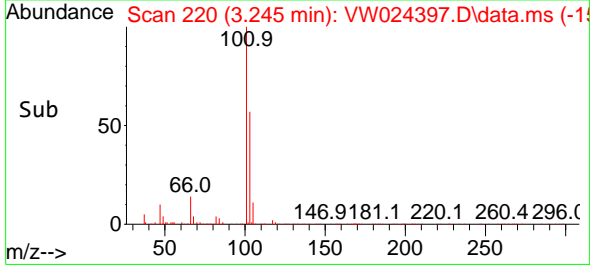
Manual Integrations
APPROVED
 Reviewed By :Semsettin Yesilyurt 08/30/2022
 Supervised By :Mahesh Dadoda 08/30/2022

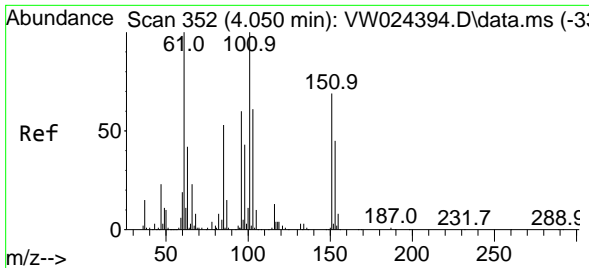


#9
 Trichlorofluoromethane
 Concen: 15.297 ug/L
 RT: 3.245 min Scan# 220
 Delta R.T. 0.000 min
 Lab File: VW024397.D
 Acq: 27 Aug 2022 13:40



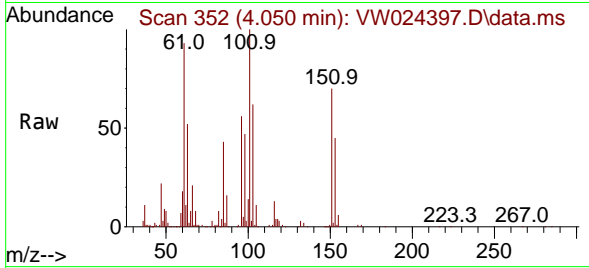
Tgt Ion:101 Resp: 85122
 Ion Ratio Lower Upper
 101 100
 103 62.0 50.4 75.6





#10
 1,1,2-Trichloro-1,2,2-trifluoroethane
 Concen: 20.195 ug/L
 RT: 4.050 min Scan# 352
 Delta R.T. 0.000 min
 Lab File: VW024397.D
 Acq: 27 Aug 2022 13:40

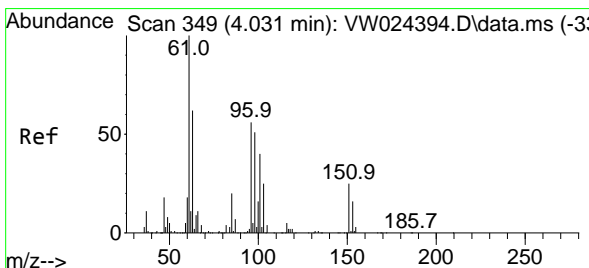
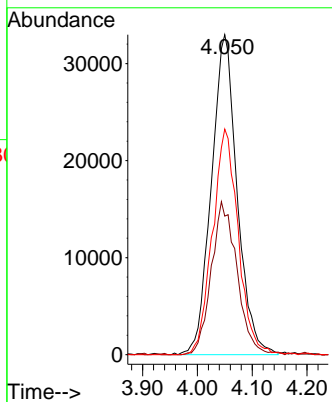
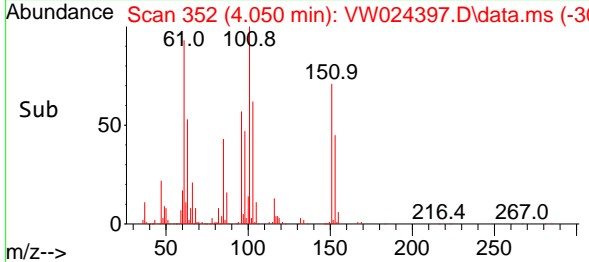
Instrument :
 MSVOA_W
 ClientSampleId :
 DBVW6MS



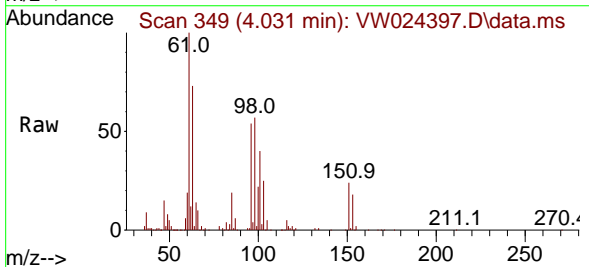
Tgt Ion: 101 Resp: 107780
 Ion Ratio Lower Upper
 101 100
 85 47.3 39.1 58.7
 151 70.1 56.8 85.2

Manual Integrations
APPROVED

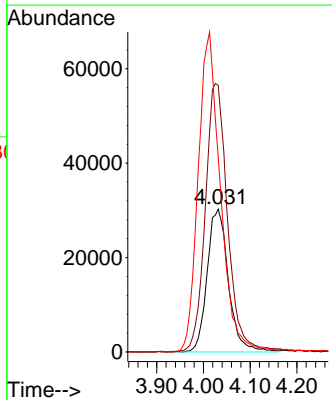
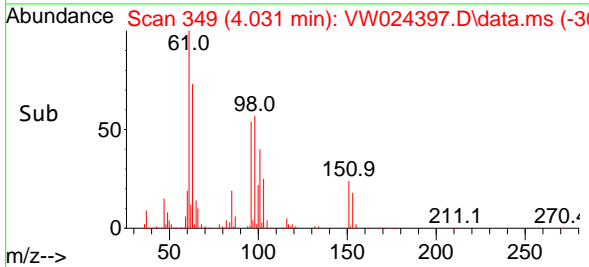
Reviewed By :Semsettin Yesilyurt 08/30/2022
 Supervised By :Mahesh Dadoda 08/30/2022

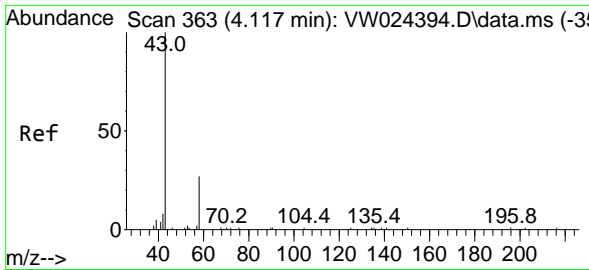


#12
 1,1-Dichloroethene
 Concen: 22.140 ug/L m
 RT: 4.031 min Scan# 349
 Delta R.T. 0.000 min
 Lab File: VW024397.D
 Acq: 27 Aug 2022 13:40



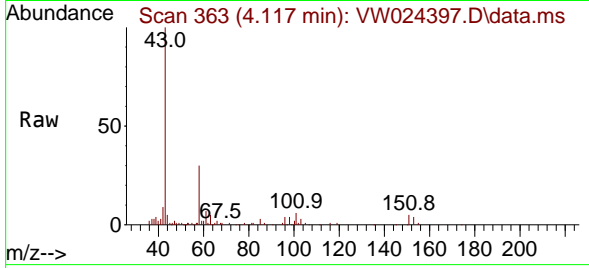
Tgt Ion: 96 Resp: 95663
 Ion Ratio Lower Upper
 96 100
 61 186.8 118.8 220.6
 63 136.8 72.8 135.2#





#13
 Acetone
 Concen: 45.751 ug/L
 RT: 4.117 min Scan# 301
 Delta R.T. 0.000 min
 Lab File: VW024397.D
 Acq: 27 Aug 2022 13:40

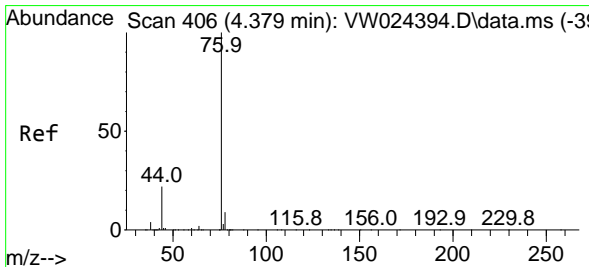
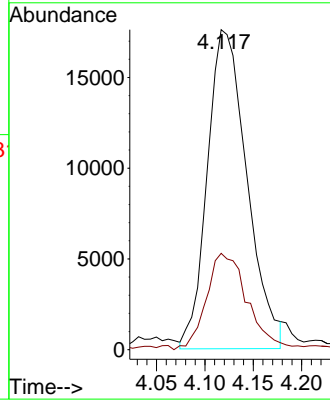
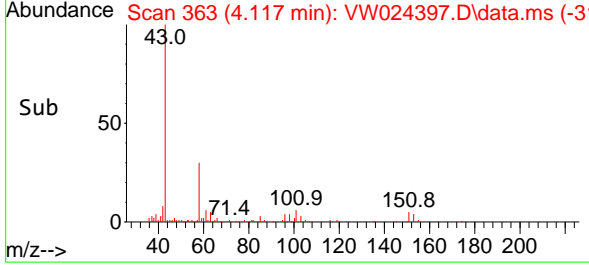
Instrument :
 MSVOA_W
 ClientSampleId :
 DBVW6MS



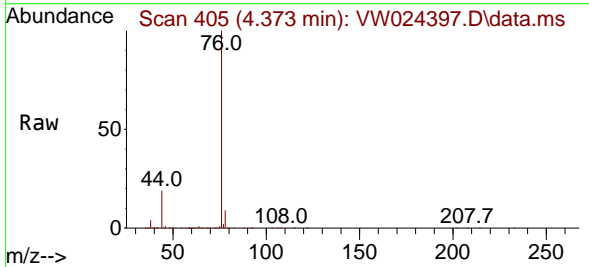
Tgt Ion: 43 Resp: 50140
 Ion Ratio Lower Upper
 43 100
 58 31.3 0.0 58.4

Manual Integrations
APPROVED

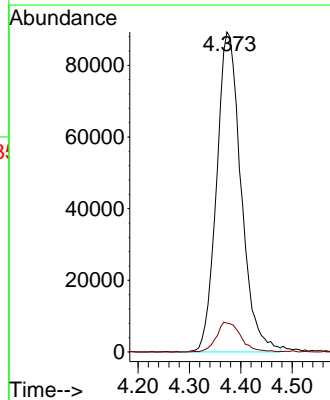
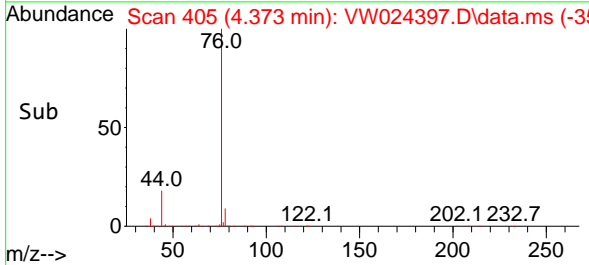
Reviewed By :Semsettin Yesilyurt 08/30/2022
 Supervised By :Mahesh Dadoda 08/30/2022

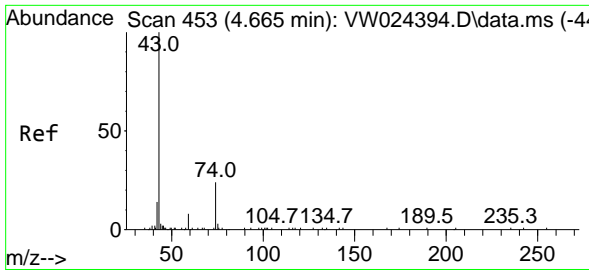


#14
 Carbon disulfide
 Concen: 20.513 ug/L
 RT: 4.373 min Scan# 405
 Delta R.T. -0.006 min
 Lab File: VW024397.D
 Acq: 27 Aug 2022 13:40



Tgt Ion: 76 Resp: 294574
 Ion Ratio Lower Upper
 76 100
 78 9.0 7.4 11.2





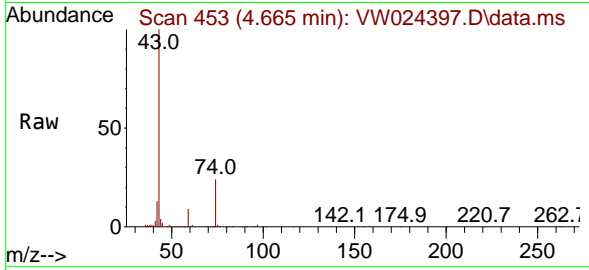
#15
 Methyl Acetate
 Concen: 20.364 ug/L
 RT: 4.665 min Scan# 41
 Delta R.T. 0.000 min
 Lab File: VW024397.D
 Acq: 27 Aug 2022 13:40

Instrument :

MSVOA_W

ClientSampleId :

DBVW6MS

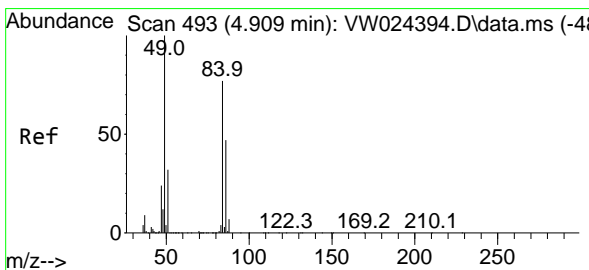
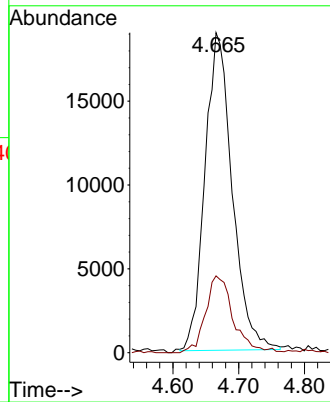
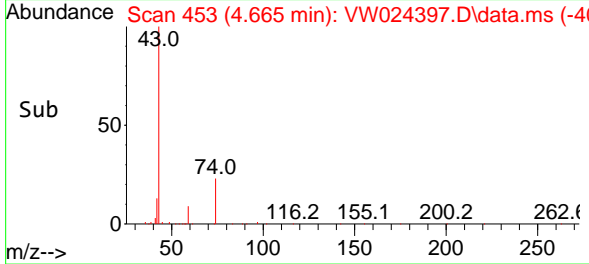


Tgt Ion: 43 Resp: 5460
 Ion Ratio Lower Upper
 43 100
 74 23.3 17.9 26.9

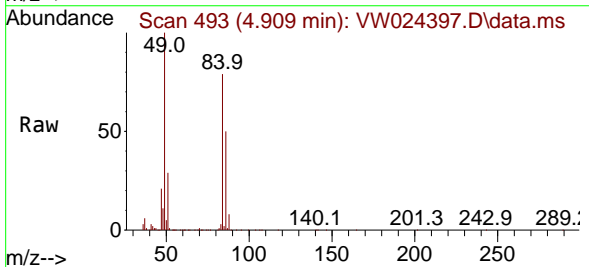
Manual Integrations

APPROVED

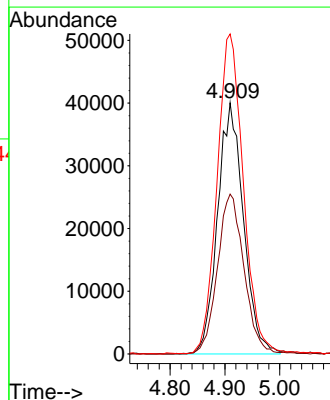
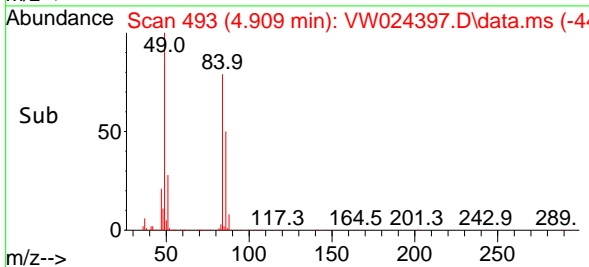
Reviewed By :Semsettin Yesilyurt 08/30/2022
 Supervised By :Mahesh Dadoda 08/30/2022

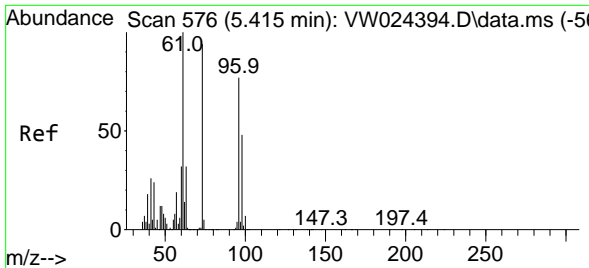


#16
 Methylene chloride
 Concen: 21.625 ug/L
 RT: 4.909 min Scan# 493
 Delta R.T. 0.000 min
 Lab File: VW024397.D
 Acq: 27 Aug 2022 13:40



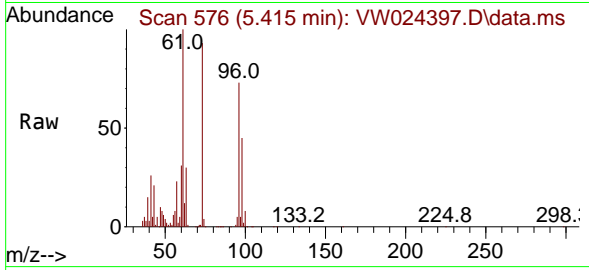
Tgt Ion: 84 Resp: 131193
 Ion Ratio Lower Upper
 84 100
 86 63.7 47.7 88.7
 49 127.4 96.6 179.4





#17
 trans-1,2-Dichloroethene
 Concen: 22.760 ug/L
 RT: 5.415 min Scan# 576
 Delta R.T. 0.000 min
 Lab File: VW024397.D
 Acq: 27 Aug 2022 13:40

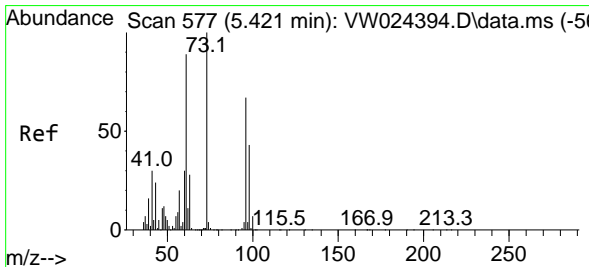
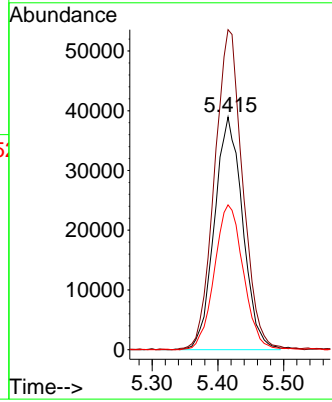
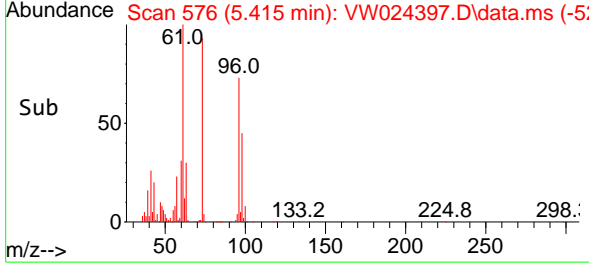
Instrument : MSVOA_W
 ClientSampleId : DBVW6MS



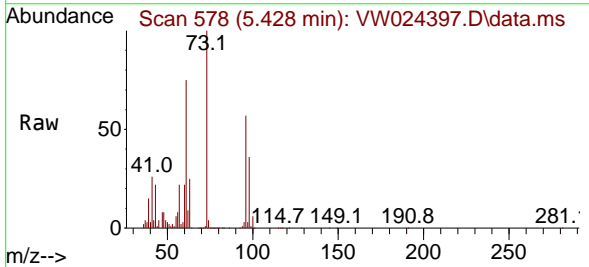
Tgt Ion: 96 Resp: 116404
 Ion Ratio Lower Upper
 96 100
 61 137.6 92.1 171.1
 98 62.2 44.7 83.1

Manual Integrations
 APPROVED

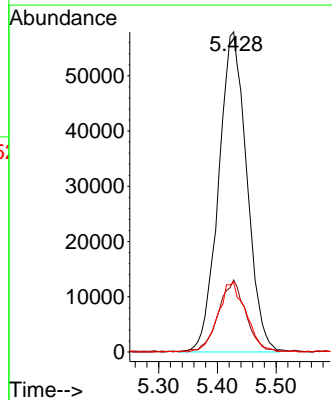
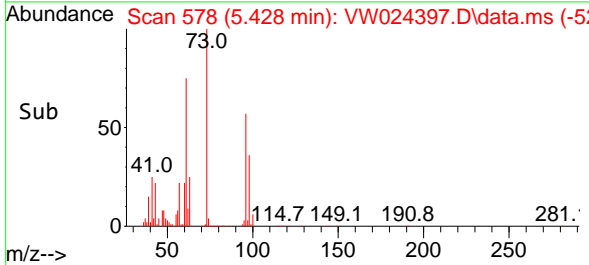
Reviewed By :Semsettin Yesilyurt 08/30/2022
 Supervised By :Mahesh Dadoda 08/30/2022

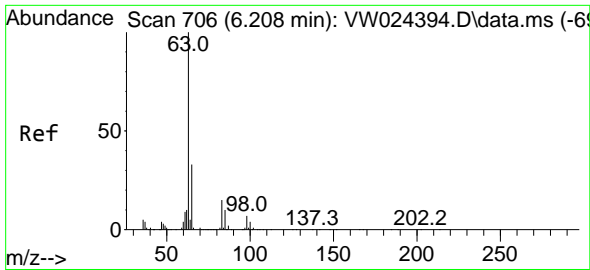


#18
 Methyl tert-butyl Ether
 Concen: 23.045 ug/L
 RT: 5.428 min Scan# 578
 Delta R.T. 0.006 min
 Lab File: VW024397.D
 Acq: 27 Aug 2022 13:40



Tgt Ion: 73 Resp: 192987
 Ion Ratio Lower Upper
 73 100
 43 21.1 18.8 28.2
 57 21.7 18.1 27.1





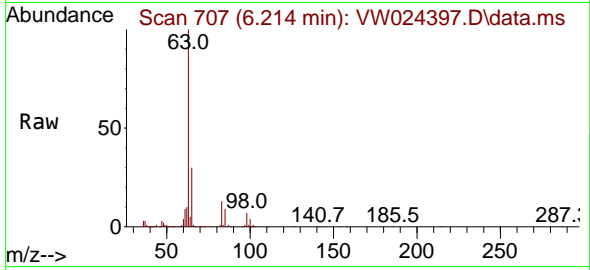
#19
 1,1-Dichloroethane
 Concen: 21.978 ug/L
 RT: 6.214 min Scan# 707
 Delta R.T. 0.006 min
 Lab File: VW024397.D
 Acq: 27 Aug 2022 13:40

Instrument :

MSVOA_W

Client Sample Id :

DBVW6MS

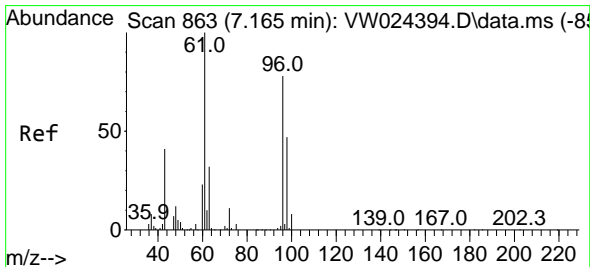
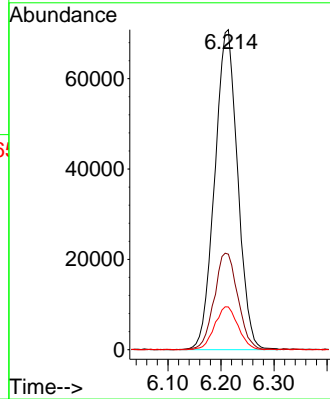
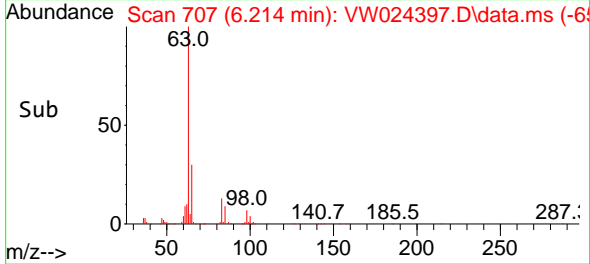


Tgt Ion: 63 Resp: 21255
 Ion Ratio Lower Upper
 63 100
 65 29.8 23.6 43.8
 83 13.4 10.4 19.4

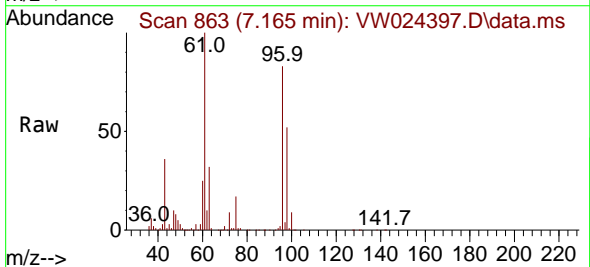
Manual Integrations

APPROVED

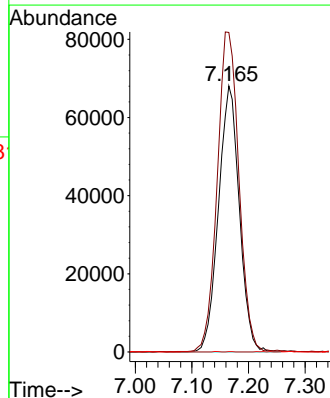
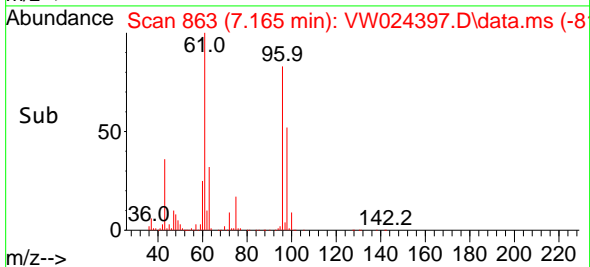
Reviewed By :Semsettin Yesilyurt 08/30/2022
 Supervised By :Mahesh Dadoda 08/30/2022

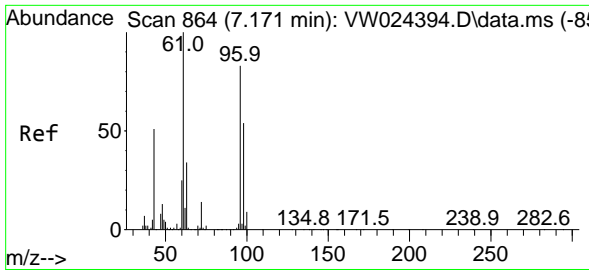


#20
 cis-1,2-Dichloroethene
 Concen: 30.937 ug/L m
 RT: 7.165 min Scan# 863
 Delta R.T. 0.000 min
 Lab File: VW024397.D
 Acq: 27 Aug 2022 13:40



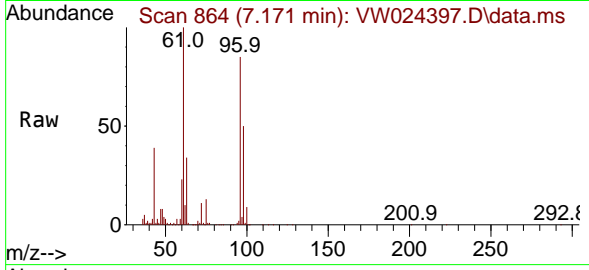
Tgt Ion: 96 Resp: 173998
 Ion Ratio Lower Upper
 96 100
 61 120.1 90.2 167.6
 68 0.1 0.0 0.0#





#22
 2-Butanone
 Concen: 42.726 ug/L
 RT: 7.171 min Scan# 864
 Delta R.T. 0.000 min
 Lab File: VW024397.D
 Acq: 27 Aug 2022 13:40

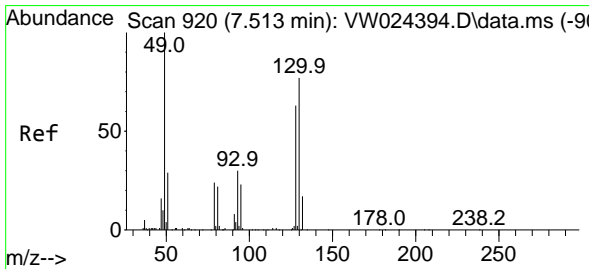
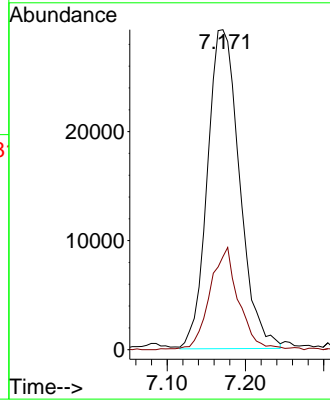
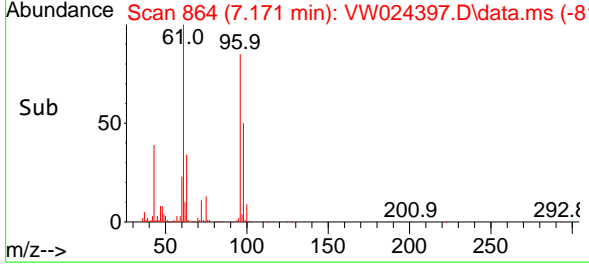
Instrument :
 MSVOA_W
 ClientSampleId :
 DBVW6MS



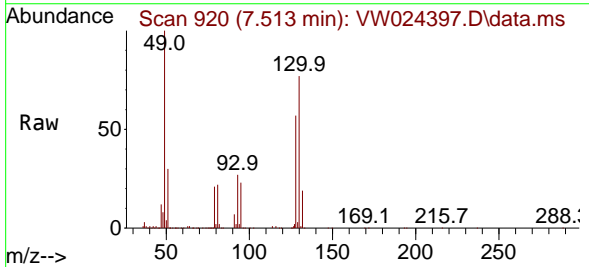
Tgt Ion: 43 Resp: 83554
 Ion Ratio Lower Upper
 43 100
 72 27.9 13.9 41.6

Manual Integrations
APPROVED

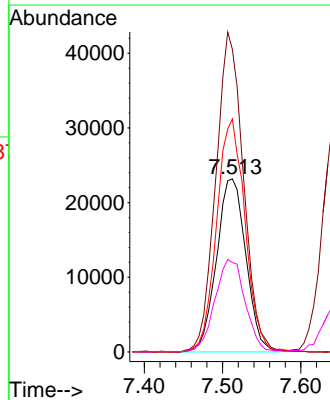
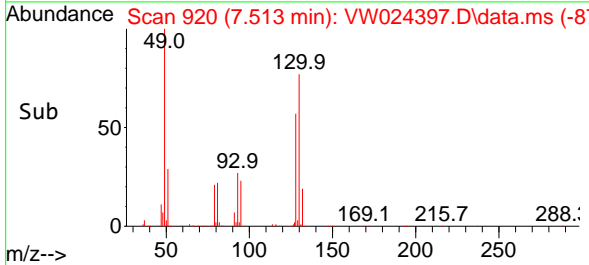
Reviewed By :Semsettin Yesilyurt 08/30/2022
 Supervised By :Mahesh Dadoda 08/30/2022

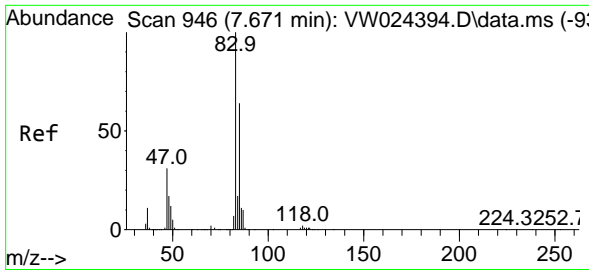


#23
 Bromochloromethane
 Concen: 21.953 ug/L
 RT: 7.513 min Scan# 920
 Delta R.T. 0.000 min
 Lab File: VW024397.D
 Acq: 27 Aug 2022 13:40



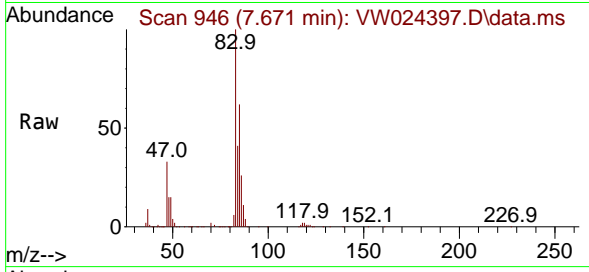
Tgt Ion:128 Resp: 60288
 Ion Ratio Lower Upper
 128 100
 49 174.8 122.1 226.7
 130 134.5 91.1 169.1
 51 51.7 39.0 58.4





#25
 Chloroform
 Concen: 21.701 ug/L
 RT: 7.671 min Scan# 946
 Delta R.T. 0.000 min
 Lab File: VW024397.D
 Acq: 27 Aug 2022 13:40

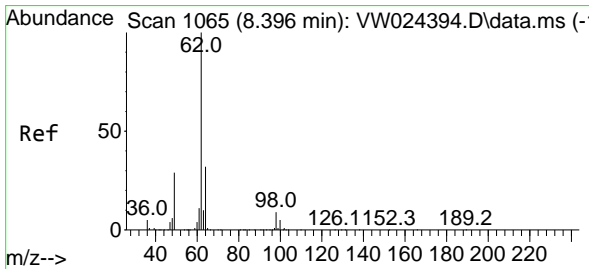
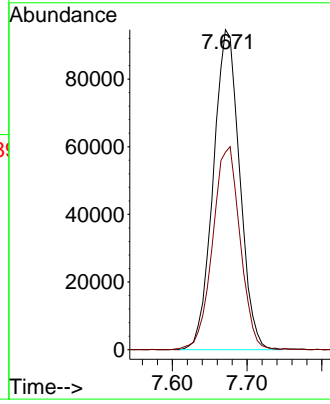
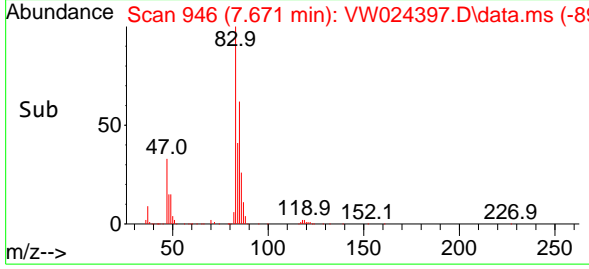
Instrument : MSVOA_W
 ClientSampleId : DBVW6MS



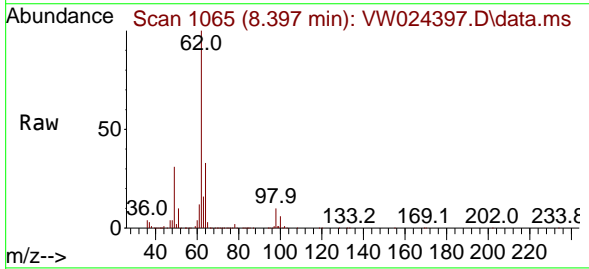
Tgt Ion: 83 Resp: 23285
 Ion Ratio Lower Upper
 83 100
 85 61.7 47.5 88.1

Manual Integrations
APPROVED

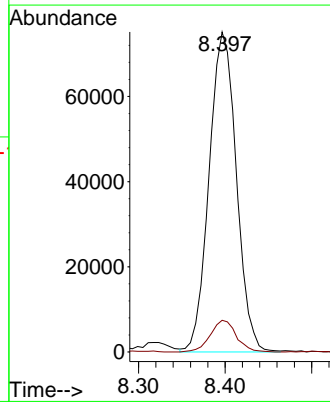
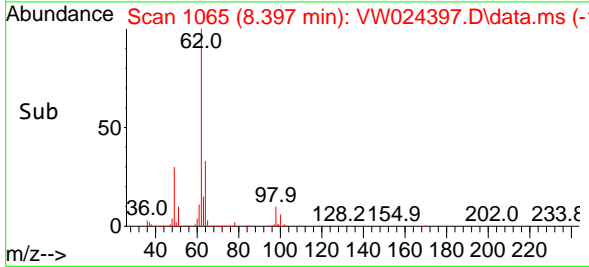
Reviewed By :Semsettin Yesilyurt 08/30/2022
 Supervised By :Mahesh Dadoda 08/30/2022

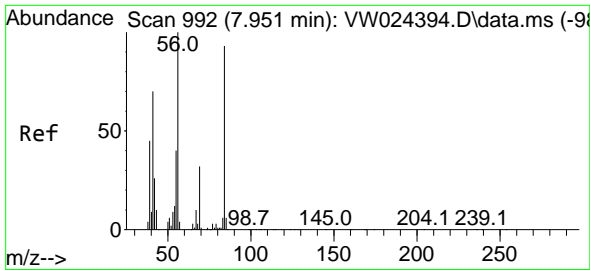


#27
 1,2-Dichloroethane
 Concen: 21.063 ug/L
 RT: 8.397 min Scan# 1065
 Delta R.T. 0.000 min
 Lab File: VW024397.D
 Acq: 27 Aug 2022 13:40



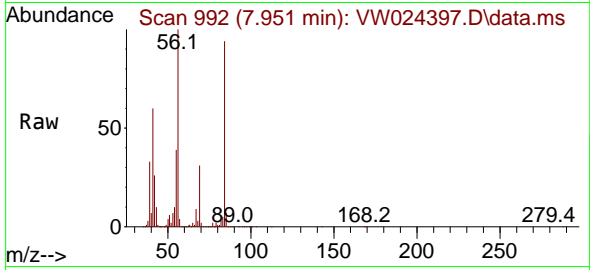
Tgt Ion: 62 Resp: 164515
 Ion Ratio Lower Upper
 62 100
 98 9.9 6.7 10.1





#29
 Cyclohexane
 Concen: 22.420 ug/L
 RT: 7.951 min Scan# 992
 Delta R.T. 0.000 min
 Lab File: VW024397.D
 Acq: 27 Aug 2022 13:40

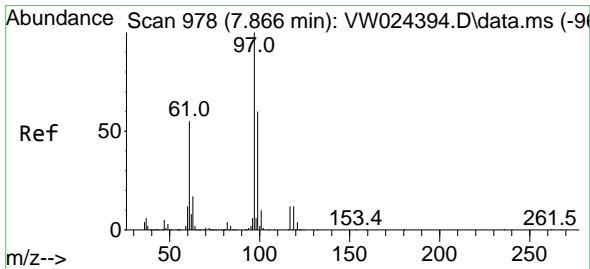
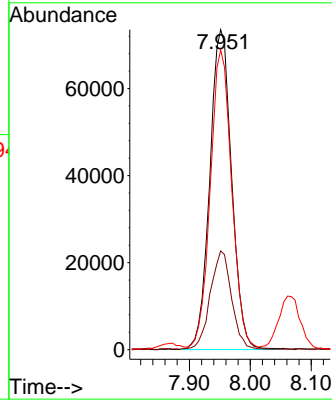
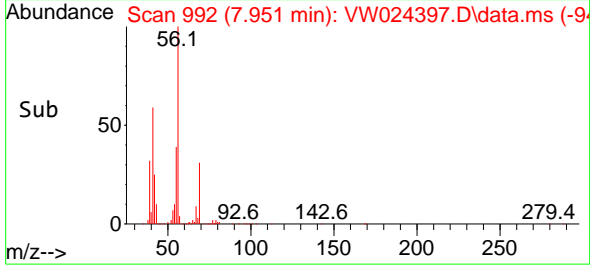
Instrument : MSVOA_W
 ClientSampleId : DBVW6MS



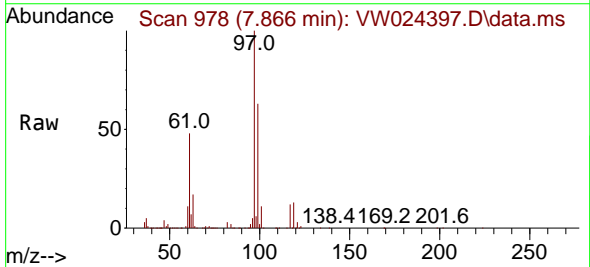
Tgt Ion: 56 Resp: 182964
 Ion Ratio Lower Upper
 56 100
 69 29.9 23.5 35.3
 84 92.0 72.2 108.4

Manual Integrations
 APPROVED

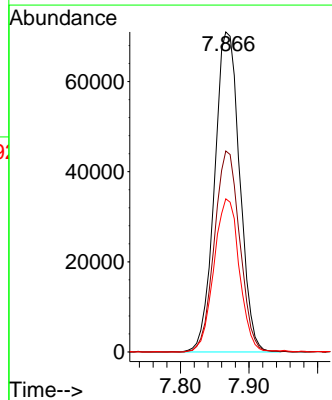
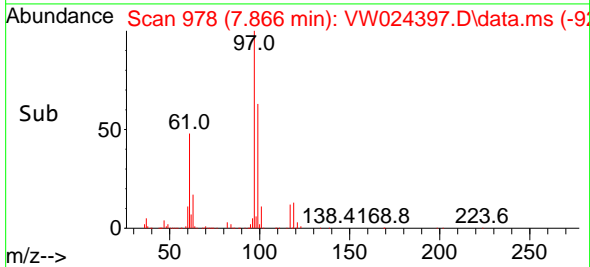
Reviewed By :Semsettin Yesilyurt 08/30/2022
 Supervised By :Mahesh Dadoda 08/30/2022

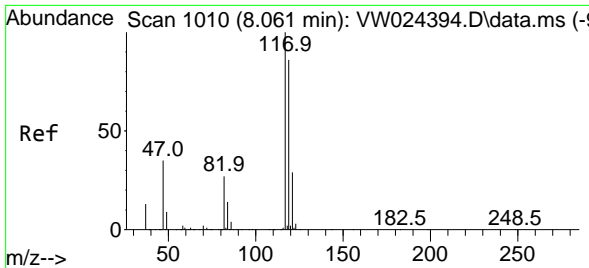


#30
 1,1,1-Trichloroethane
 Concen: 20.243 ug/L
 RT: 7.866 min Scan# 978
 Delta R.T. 0.000 min
 Lab File: VW024397.D
 Acq: 27 Aug 2022 13:40



Tgt Ion: 97 Resp: 180657
 Ion Ratio Lower Upper
 97 100
 99 63.5 50.2 75.2
 61 48.4 40.2 60.4





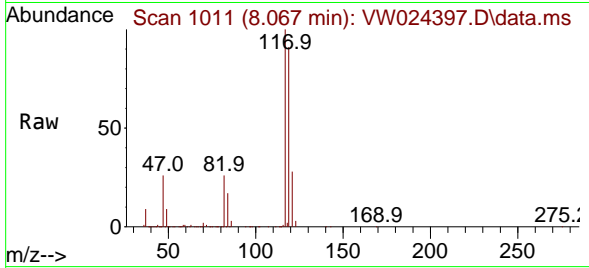
#31
 Carbon tetrachloride
 Concen: 20.482 ug/L
 RT: 8.067 min Scan# 1010
 Delta R.T. 0.006 min
 Lab File: VW024397.D
 Acq: 27 Aug 2022 13:40

Instrument :

MSVOA_W

ClientSampleId :

DBVW6MS

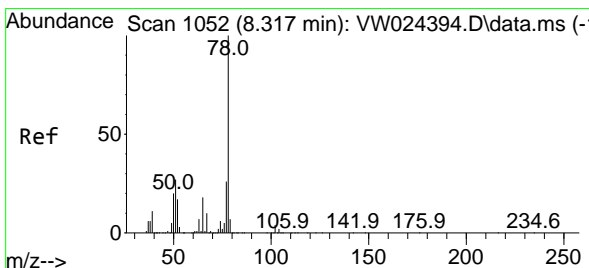
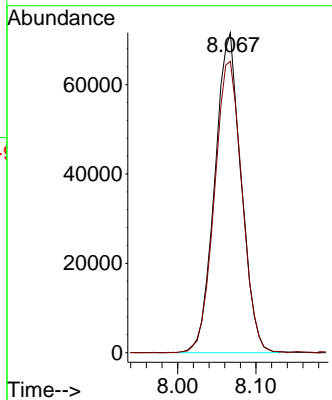
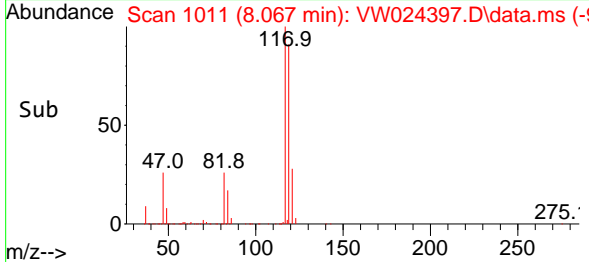


Tgt Ion:117 Resp: 167228
 Ion Ratio Lower Upper
 117 100
 119 95.5 75.9 113.9

Manual Integrations

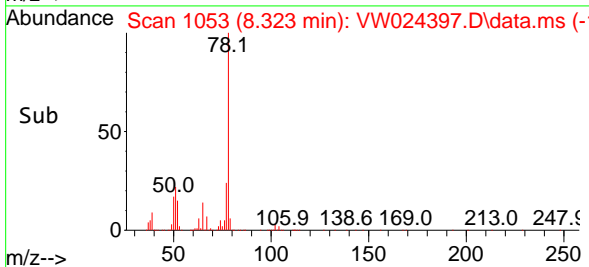
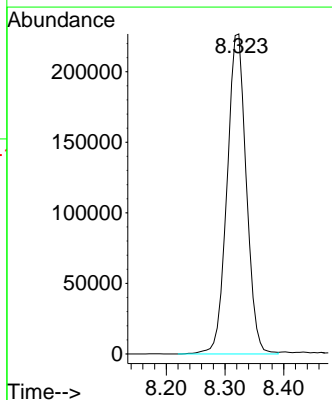
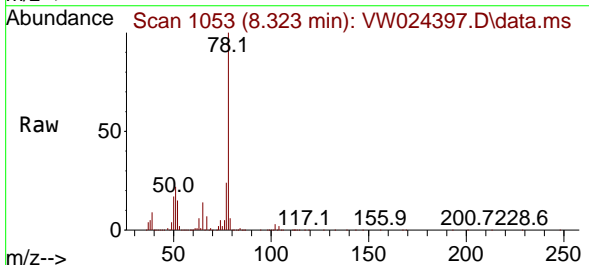
APPROVED

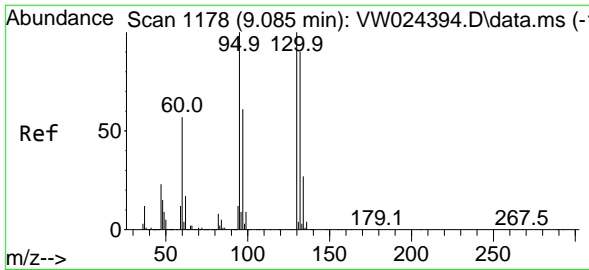
Reviewed By :Semsettin Yesilyurt 08/30/2022
 Supervised By :Mahesh Dadoda 08/30/2022



#33
 Benzene
 Concen: 21.919 ug/L
 RT: 8.323 min Scan# 1053
 Delta R.T. 0.006 min
 Lab File: VW024397.D
 Acq: 27 Aug 2022 13:40

Tgt Ion: 78 Resp: 516578





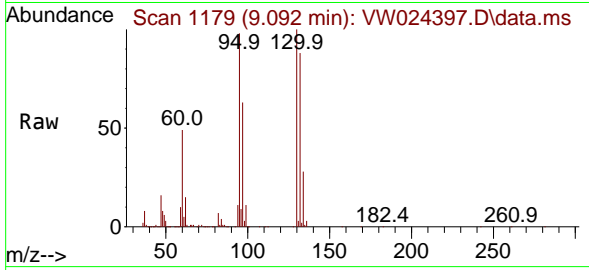
#34
 Trichloroethene
 Concen: 23.721 ug/L
 RT: 9.092 min Scan# 1179
 Delta R.T. 0.006 min
 Lab File: VW024397.D
 Acq: 27 Aug 2022 13:40

Instrument :

MSVOA_W

ClientSampleId :

DBVW6MS

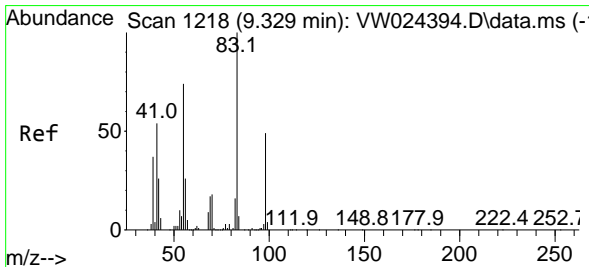
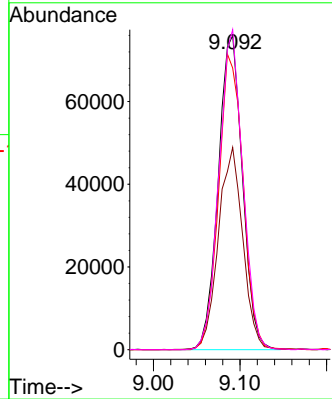
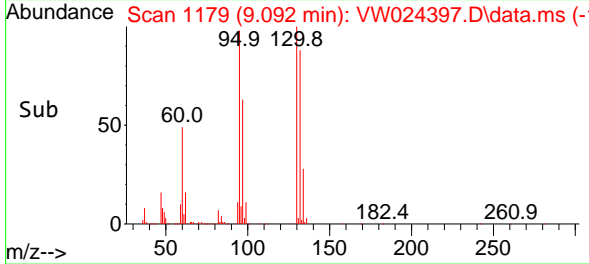


Tgt Ion: 95 Resp: 147349
 Ion Ratio Lower Upper
 95 100
 97 64.4 48.4 89.8
 132 89.6 68.6 127.4
 130 101.8 72.6 134.8

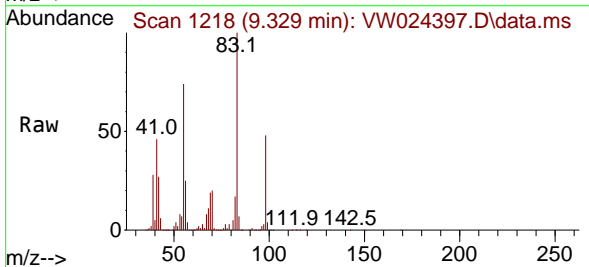
Manual Integrations

APPROVED

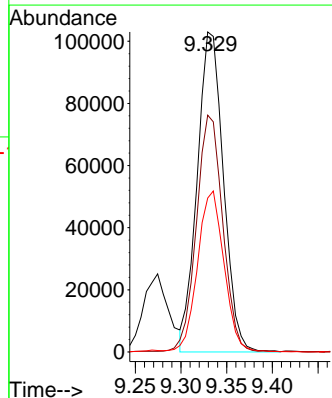
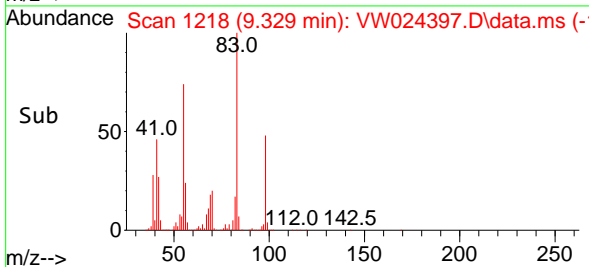
Reviewed By :Semsettin Yesilyurt 08/30/2022
 Supervised By :Mahesh Dadoda 08/30/2022

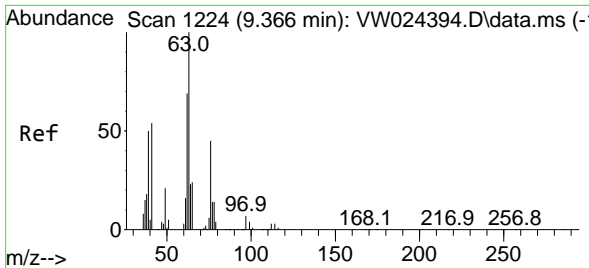


#35
 Methylcyclohexane
 Concen: 20.641 ug/L
 RT: 9.329 min Scan# 1218
 Delta R.T. 0.000 min
 Lab File: VW024397.D
 Acq: 27 Aug 2022 13:40



Tgt Ion: 83 Resp: 205706
 Ion Ratio Lower Upper
 83 100
 55 74.3 60.1 90.1
 98 50.8 40.5 60.7





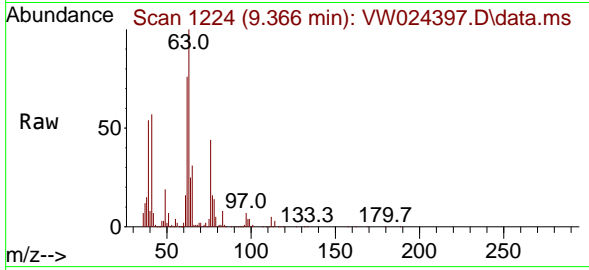
#37
 1,2-Dichloropropane
 Concen: 21.201 ug/L
 RT: 9.366 min Scan# 11
 Delta R.T. 0.000 min
 Lab File: VW024397.D
 Acq: 27 Aug 2022 13:40

Instrument :

MSVOA_W

ClientSampleId :

DBVW6MS

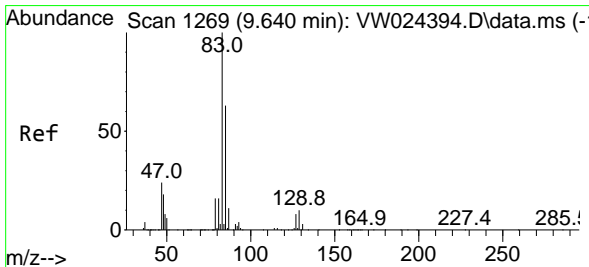
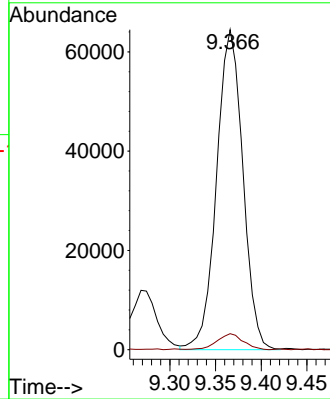
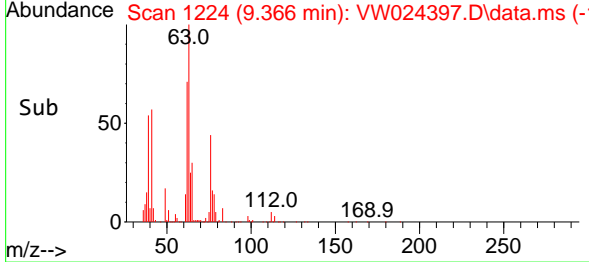


Tgt Ion: 63 Resp: 12894
 Ion Ratio Lower Upper
 63 100
 112 5.0 3.4 5.0

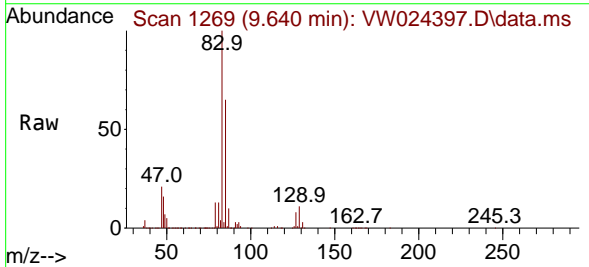
Manual Integrations

APPROVED

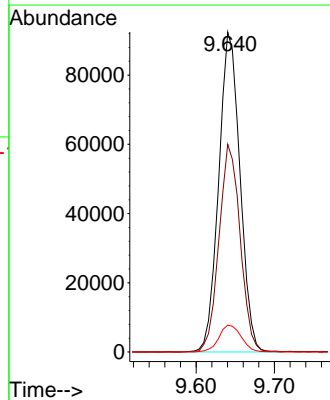
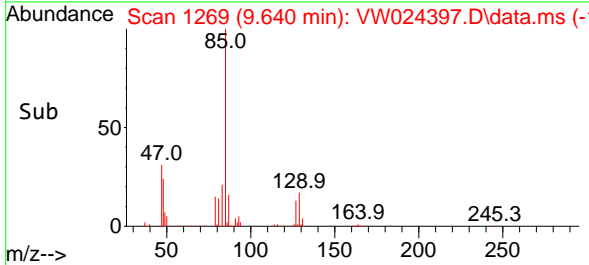
Reviewed By :Semsettin Yesilyurt 08/30/2022
 Supervised By :Mahesh Dadoda 08/30/2022

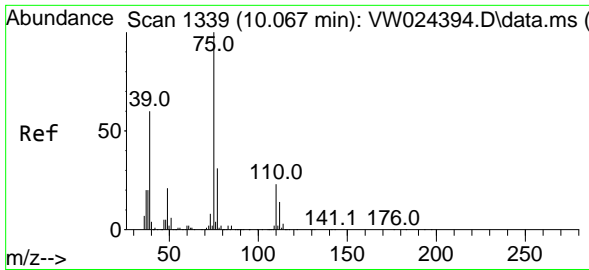


#38
 Bromodichloromethane
 Concen: 21.082 ug/L
 RT: 9.640 min Scan# 1269
 Delta R.T. 0.000 min
 Lab File: VW024397.D
 Acq: 27 Aug 2022 13:40



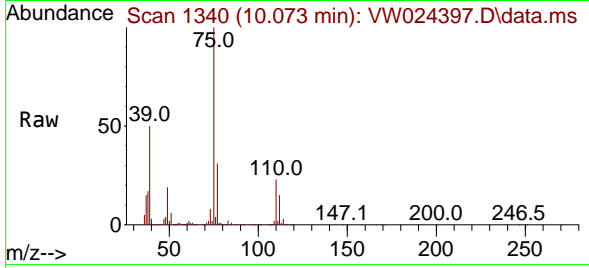
Tgt Ion: 83 Resp: 174615
 Ion Ratio Lower Upper
 83 100
 85 64.9 46.3 85.9
 127 8.3 6.7 10.1





#39
 cis-1,3-Dichloropropene
 Concen: 23.295 ug/L
 RT: 10.073 min Scan# 111
 Delta R.T. 0.006 min
 Lab File: VW024397.D
 Acq: 27 Aug 2022 13:40

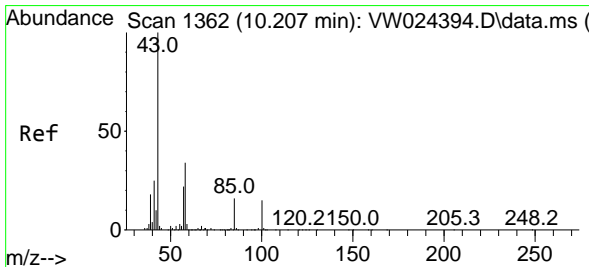
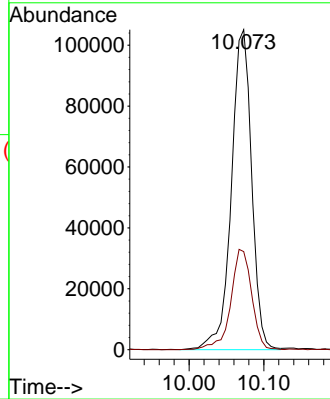
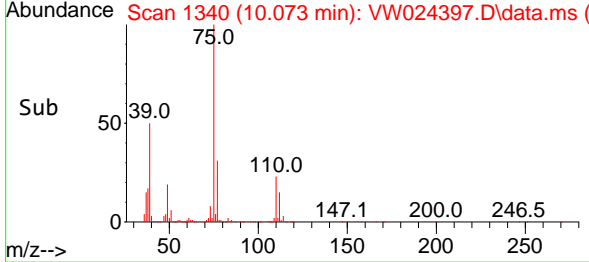
Instrument :
 MSVOA_W
 ClientSampleId :
 DBVW6MS



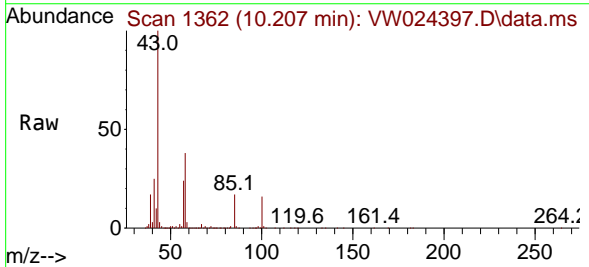
Tgt Ion: 75 Resp: 19805
 Ion Ratio Lower Upper
 75 100
 77 30.7 21.8 40.6

Manual Integrations
 APPROVED

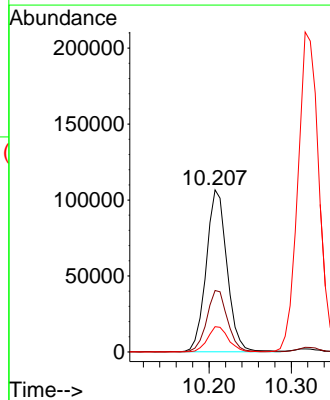
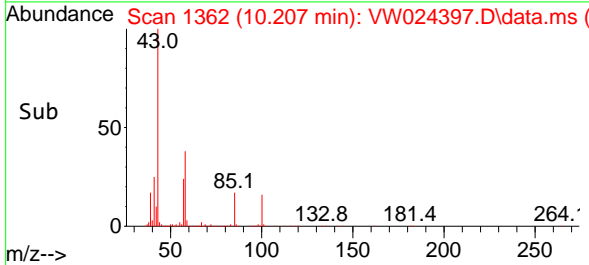
Reviewed By :Semsettin Yesilyurt 08/30/2022
 Supervised By :Mahesh Dadoda 08/30/2022

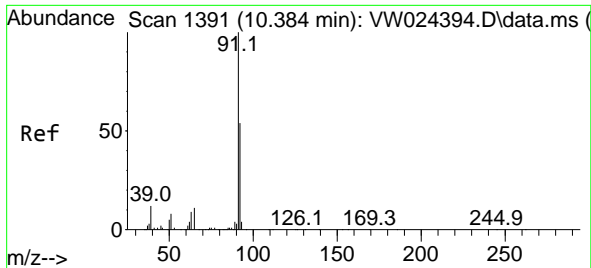


#40
 4-Methyl-2-pentanone
 Concen: 43.256 ug/L
 RT: 10.207 min Scan# 1362
 Delta R.T. 0.000 min
 Lab File: VW024397.D
 Acq: 27 Aug 2022 13:40



Tgt Ion: 43 Resp: 187076
 Ion Ratio Lower Upper
 43 100
 58 37.9 29.4 44.2
 100 15.7 11.8 17.8





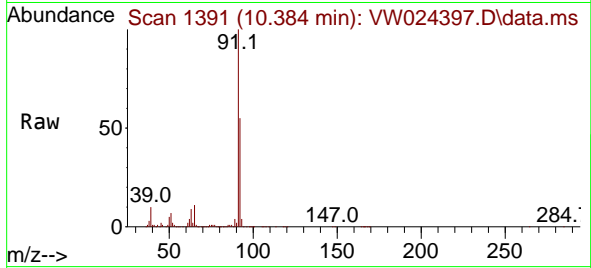
#42
 Toluene
 Concen: 21.979 ug/L
 RT: 10.384 min Scan# 1391
 Delta R.T. 0.000 min
 Lab File: VW024397.D
 Acq: 27 Aug 2022 13:40

Instrument :

MSVOA_W

ClientSampleId :

DBVW6MS

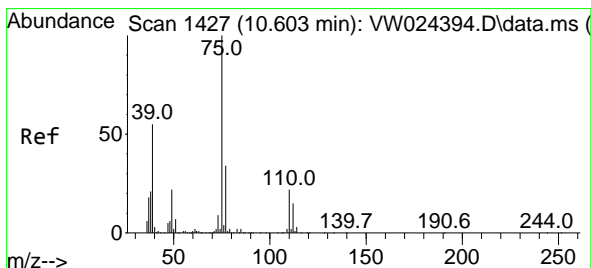
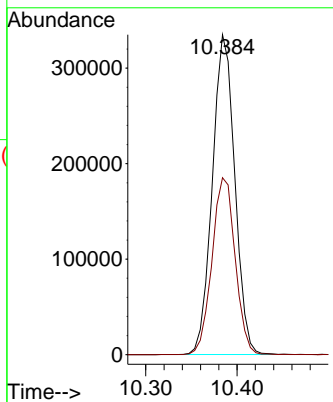
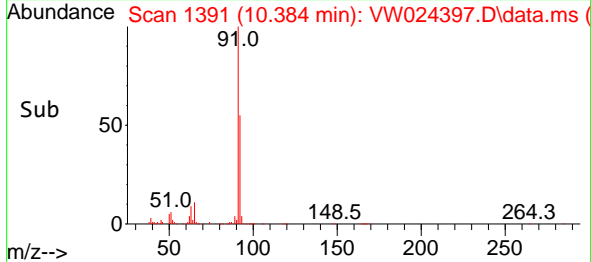


Tgt Ion: 91 Resp: 57166
 Ion Ratio Lower Upper
 91 100
 92 55.3 40.0 74.4

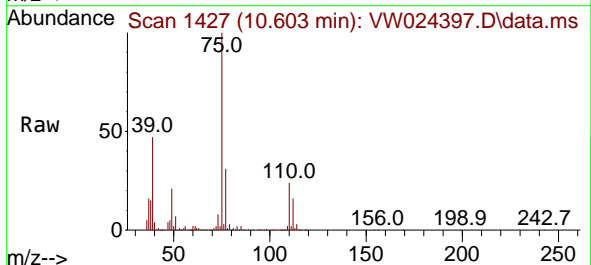
Manual Integrations

APPROVED

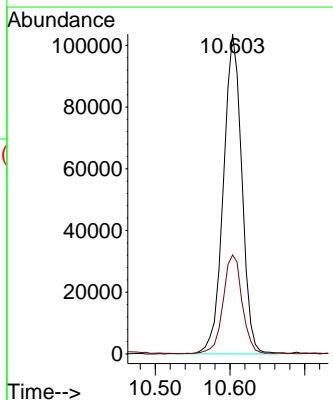
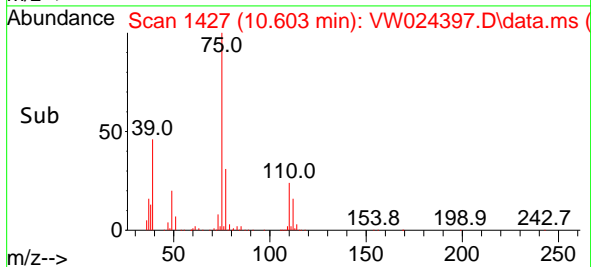
Reviewed By :Semsettin Yesilyurt 08/30/2022
 Supervised By :Mahesh Dadoda 08/30/2022

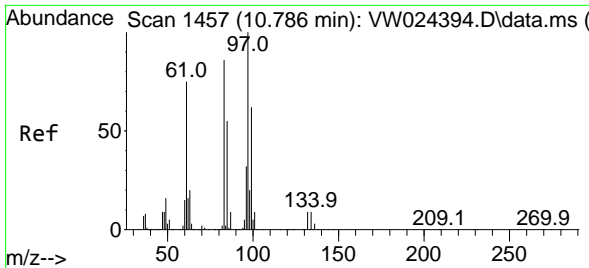


#44
 trans-1,3-Dichloropropene
 Concen: 21.496 ug/L
 RT: 10.603 min Scan# 1427
 Delta R.T. 0.000 min
 Lab File: VW024397.D
 Acq: 27 Aug 2022 13:40



Tgt Ion: 75 Resp: 177583
 Ion Ratio Lower Upper
 75 100
 77 30.9 21.1 39.1





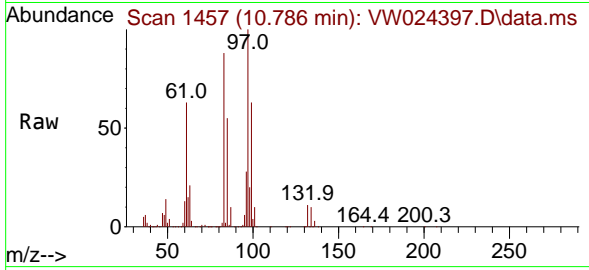
#45
 1,1,2-Trichloroethane
 Concen: 21.376 ug/L
 RT: 10.786 min Scan# 1457
 Delta R.T. 0.000 min
 Lab File: VW024397.D
 Acq: 27 Aug 2022 13:40

Instrument :

MSVOA_W

ClientSampleId :

DBVW6MS

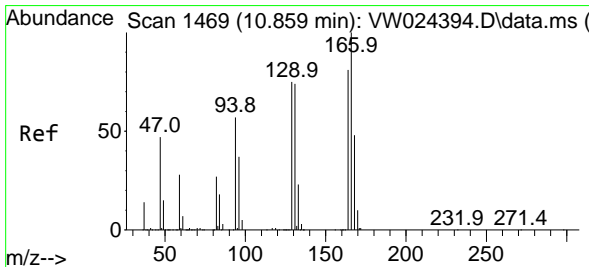
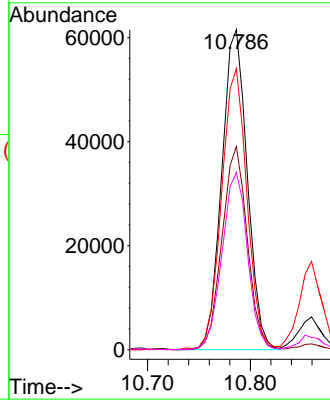
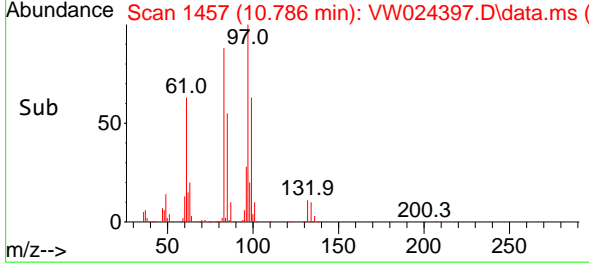


Tgt Ion: 97 Resp: 106019
 Ion Ratio Lower Upper
 97 100
 99 63.4 40.4 75.0
 83 87.9 60.1 111.5
 85 55.4 40.9 76.0

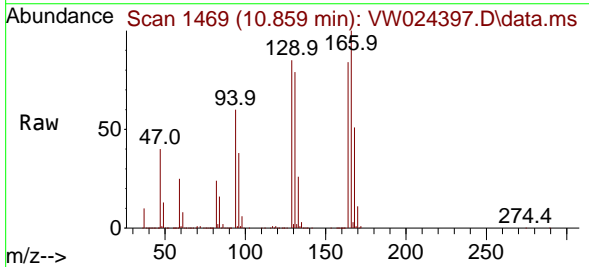
Manual Integrations

APPROVED

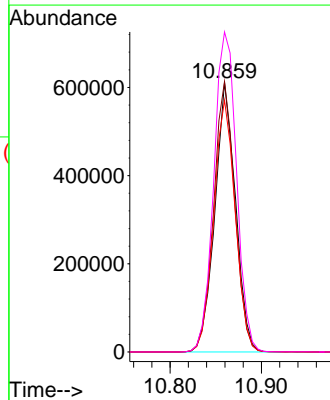
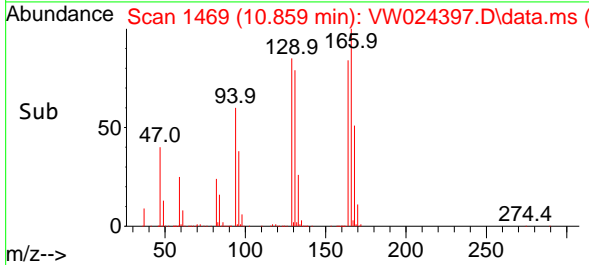
Reviewed By :Semsettin Yesilyurt 08/30/2022
 Supervised By :Mahesh Dadoda 08/30/2022

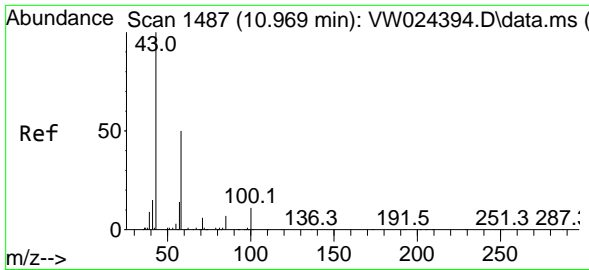


#46
 Tetrachloroethene
 Concen: 199.398 ug/L
 RT: 10.859 min Scan# 1469
 Delta R.T. 0.000 min
 Lab File: VW024397.D
 Acq: 27 Aug 2022 13:40



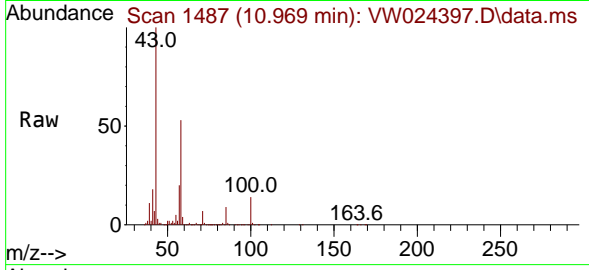
Tgt Ion:164 Resp: 961925
 Ion Ratio Lower Upper
 164 100
 129 100.5 72.9 135.3
 131 93.5 63.7 118.3
 166 118.8 86.2 160.0





#48
 2-Hexanone
 Concen: 41.320 ug/L
 RT: 10.969 min Scan# 1487
 Delta R.T. 0.000 min
 Lab File: VW024397.D
 Acq: 27 Aug 2022 13:40

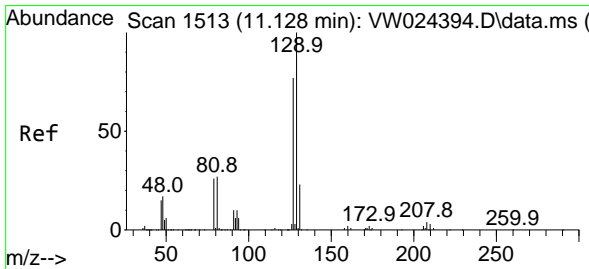
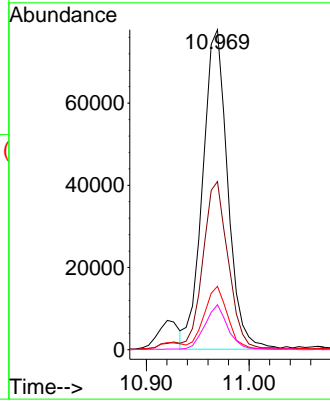
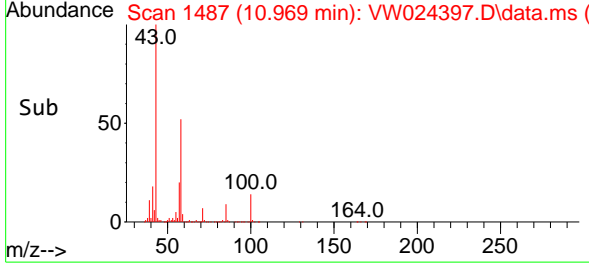
Instrument : MSVOA_W
 ClientSampleId : DBVW6MS



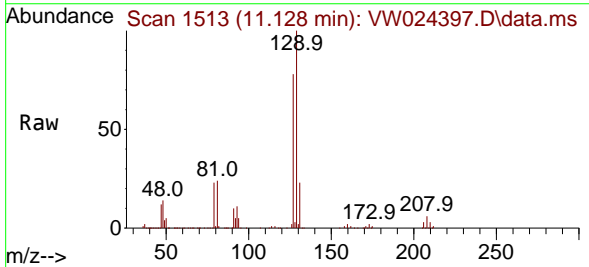
Tgt Ion: 43 Resp: 131814
 Ion Ratio Lower Upper
 43 100
 58 52.9 40.6 61.0
 57 18.6 14.2 21.2
 100 13.1 9.8 14.6

Manual Integrations
 APPROVED

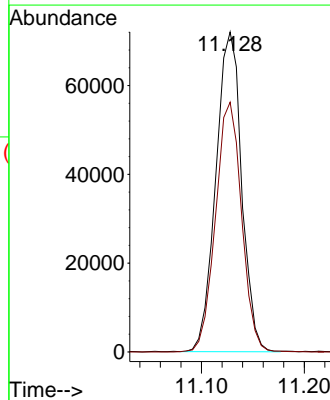
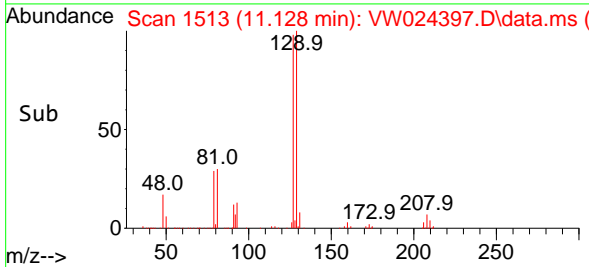
Reviewed By :Semsettin Yesilyurt 08/30/2022
 Supervised By :Mahesh Dadoda 08/30/2022

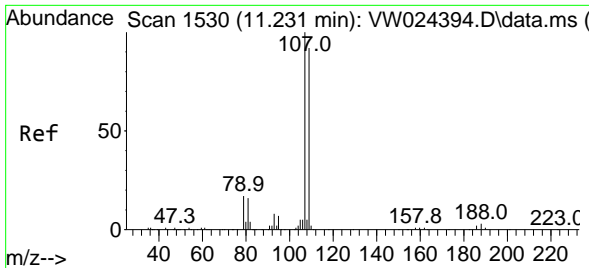


#49
 Dibromochloromethane
 Concen: 21.370 ug/L
 RT: 11.128 min Scan# 1513
 Delta R.T. 0.000 min
 Lab File: VW024397.D
 Acq: 27 Aug 2022 13:40



Tgt Ion:129 Resp: 125363
 Ion Ratio Lower Upper
 129 100
 127 78.1 54.6 101.4





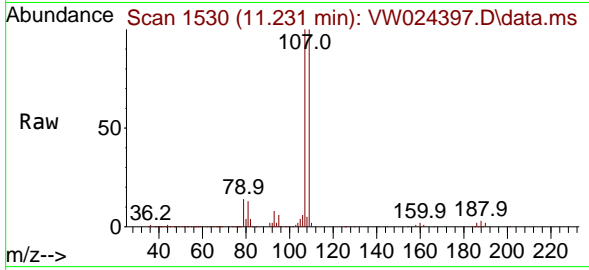
#50
 1,2-Dibromoethane
 Concen: 21.764 ug/L
 RT: 11.231 min Scan# 1530
 Delta R.T. 0.000 min
 Lab File: VW024397.D
 Acq: 27 Aug 2022 13:40

Instrument :

MSVOA_W

ClientSampleId :

DBVW6MS

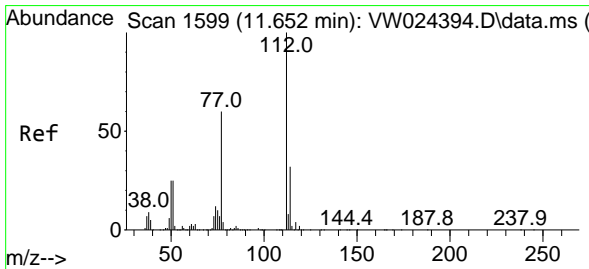
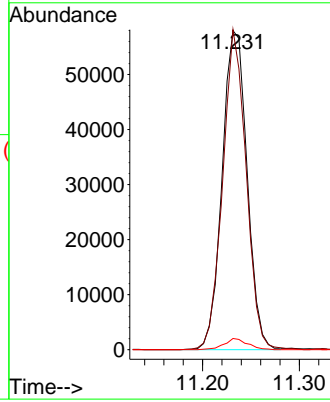
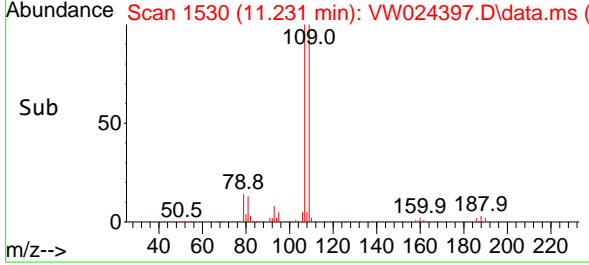


Tgt Ion:107 Resp: 103779
 Ion Ratio Lower Upper
 107 100
 109 100.3 70.1 130.1
 188 3.7 2.6 3.8

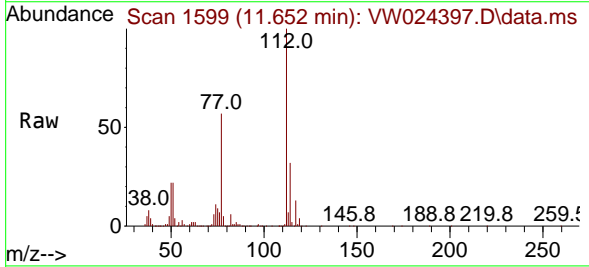
Manual Integrations

APPROVED

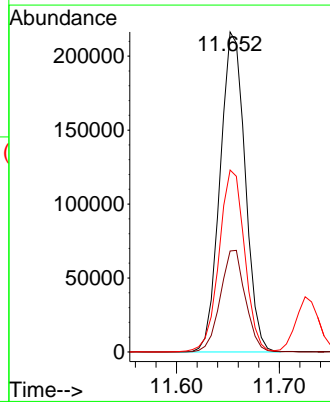
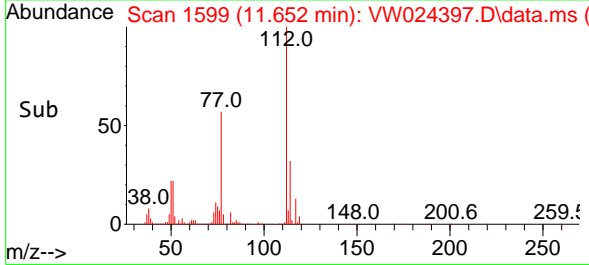
Reviewed By :Semsettin Yesilyurt 08/30/2022
 Supervised By :Mahesh Dadoda 08/30/2022

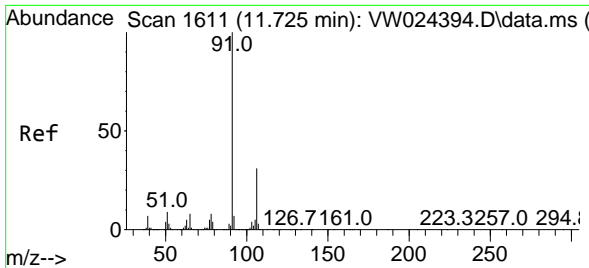


#51
 Chlorobenzene
 Concen: 20.991 ug/L
 RT: 11.652 min Scan# 1599
 Delta R.T. 0.000 min
 Lab File: VW024397.D
 Acq: 27 Aug 2022 13:40



Tgt Ion:112 Resp: 366447
 Ion Ratio Lower Upper
 112 100
 114 31.5 22.3 41.3
 77 56.9 44.1 66.1





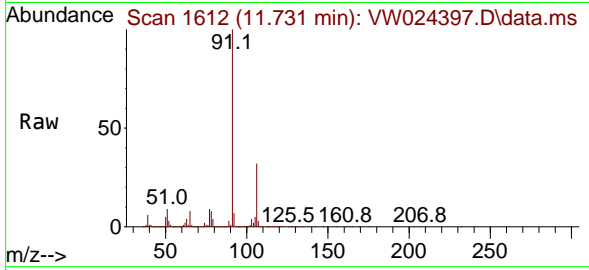
#52
 Ethylbenzene
 Concen: 22.082 ug/L
 RT: 11.731 min Scan# 1612
 Delta R.T. 0.006 min
 Lab File: VW024397.D
 Acq: 27 Aug 2022 13:40

Instrument :

MSVOA_W

Client Sample Id :

DBVW6MS

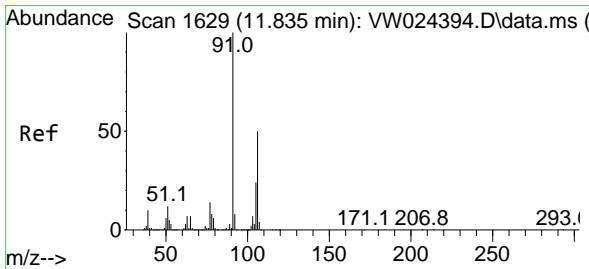
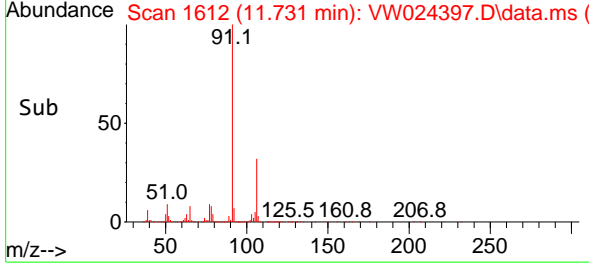
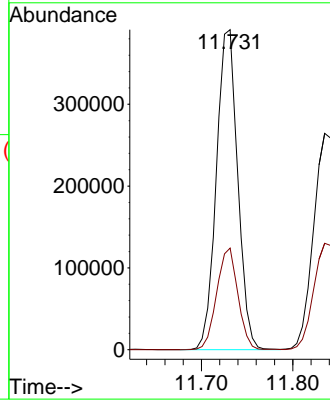


Tgt Ion: 91 Resp: 634969
 Ion Ratio Lower Upper
 91 100
 106 31.8 22.7 42.3

Manual Integrations

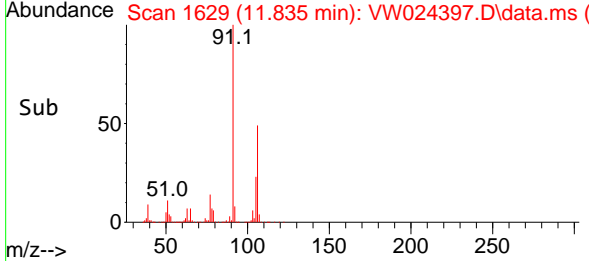
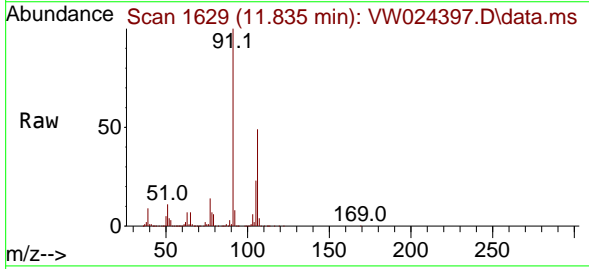
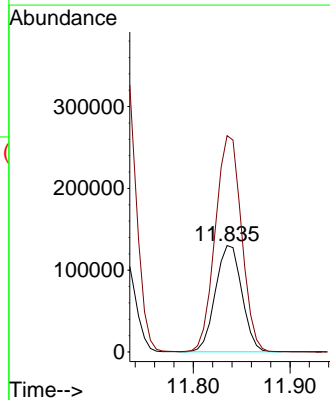
APPROVED

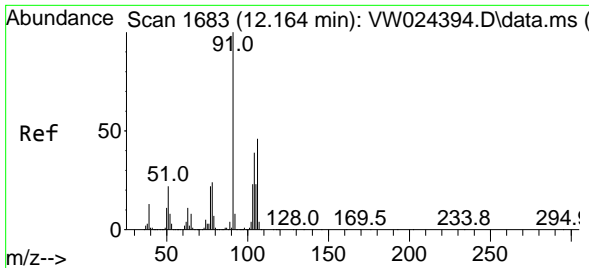
Reviewed By :Semsettin Yesilyurt 08/30/2022
 Supervised By :Mahesh Dadoda 08/30/2022



#53
 m,p-Xylene
 Concen: 21.811 ug/L
 RT: 11.835 min Scan# 1629
 Delta R.T. 0.000 min
 Lab File: VW024397.D
 Acq: 27 Aug 2022 13:40

Tgt Ion:106 Resp: 246307
 Ion Ratio Lower Upper
 106 100
 91 203.5 144.3 267.9





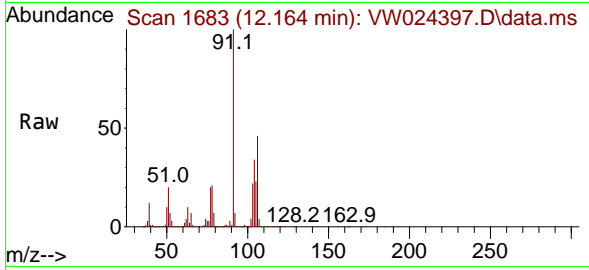
#54
 o-Xylene
 Concen: 22.674 ug/L
 RT: 12.164 min Scan# 1683
 Delta R.T. 0.000 min
 Lab File: VW024397.D
 Acq: 27 Aug 2022 13:40

Instrument :

MSVOA_W

ClientSampleId :

DBVW6MS

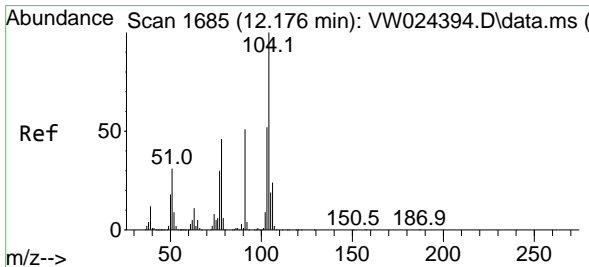
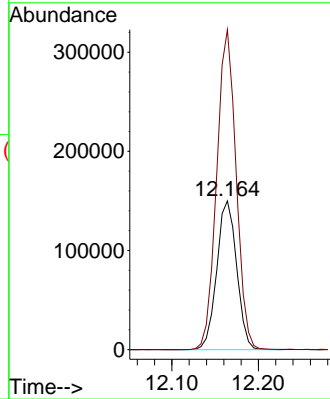
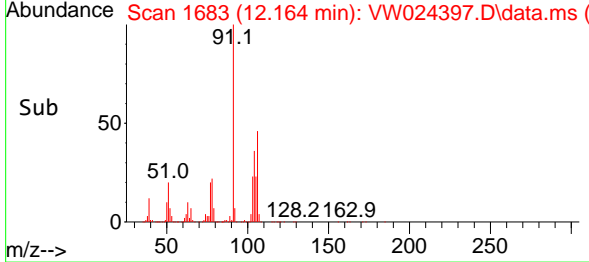


Tgt Ion:106 Resp: 239369
 Ion Ratio Lower Upper
 106 100
 91 215.1 152.1 282.5

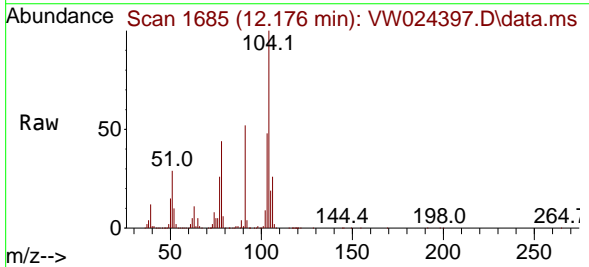
Manual Integrations

APPROVED

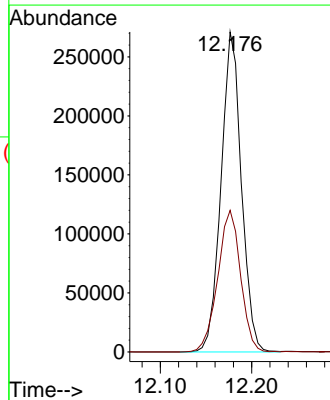
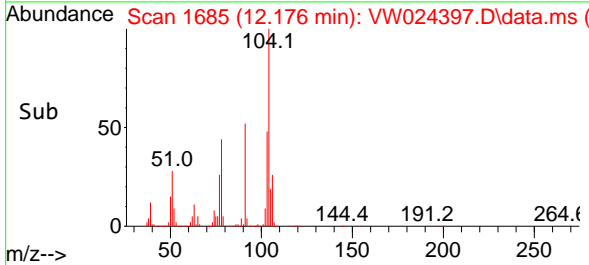
Reviewed By :Semsettin Yesilyurt 08/30/2022
 Supervised By :Mahesh Dadoda 08/30/2022

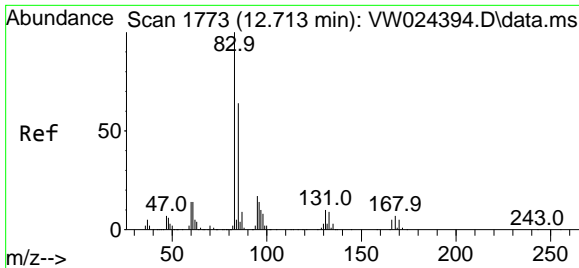


#55
 Styrene
 Concen: 22.506 ug/L
 RT: 12.176 min Scan# 1685
 Delta R.T. 0.000 min
 Lab File: VW024397.D
 Acq: 27 Aug 2022 13:40



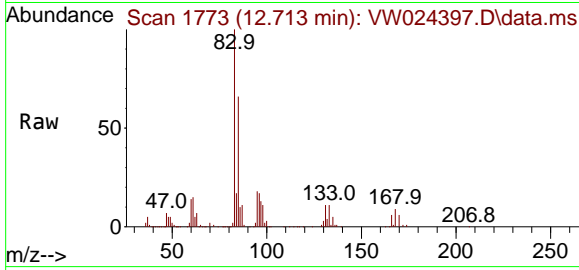
Tgt Ion:104 Resp: 419985
 Ion Ratio Lower Upper
 104 100
 78 44.2 32.0 59.4





#57
 1,1,2,2-Tetrachloroethane
 Concen: 20.167 ug/L
 RT: 12.713 min Scan# 1773
 Delta R.T. 0.000 min
 Lab File: VW024397.D
 Acq: 27 Aug 2022 13:40

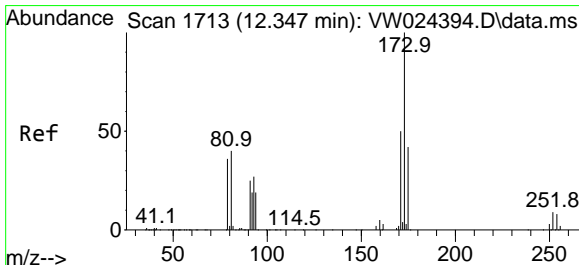
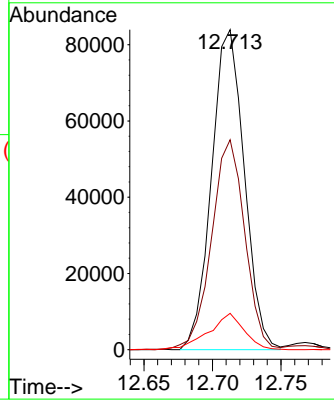
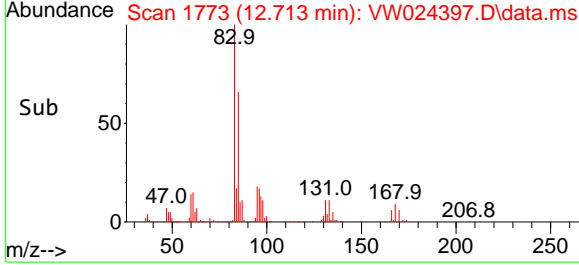
Instrument : MSVOA_W
 ClientSampleId : DBVW6MS



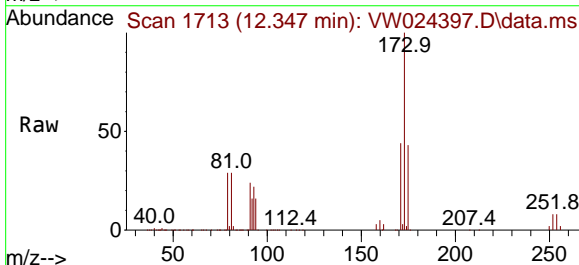
Tgt Ion: 83 Resp: 13961

Ion	Ratio	Lower	Upper
83	100		
85	65.6	44.4	82.5
131	11.3	8.4	12.6

Manual Integrations
APPROVED
 Reviewed By :Semsettin Yesilyurt 08/30/2022
 Supervised By :Mahesh Dadoda 08/30/2022

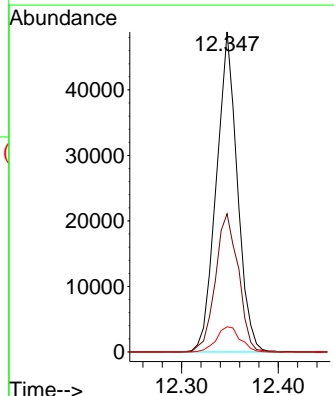
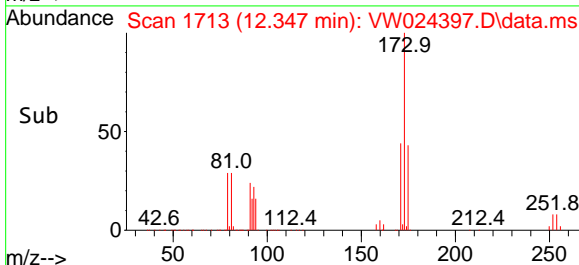


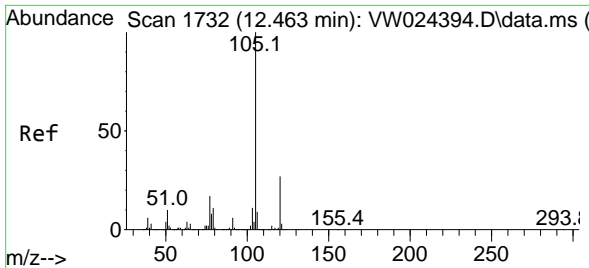
#59
 Bromoform
 Concen: 22.029 ug/L
 RT: 12.347 min Scan# 1713
 Delta R.T. 0.000 min
 Lab File: VW024397.D
 Acq: 27 Aug 2022 13:40



Tgt Ion: 173 Resp: 73685

Ion	Ratio	Lower	Upper
173	100		
175	47.0	39.8	59.6
254	8.9	6.8	10.2





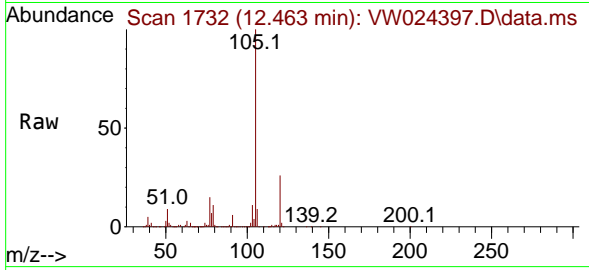
#60
 Isopropylbenzene
 Concen: 23.074 ug/L
 RT: 12.463 min Scan# 1732
 Delta R.T. 0.000 min
 Lab File: VW024397.D
 Acq: 27 Aug 2022 13:40

Instrument :

MSVOA_W

ClientSampleId :

DBVW6MS

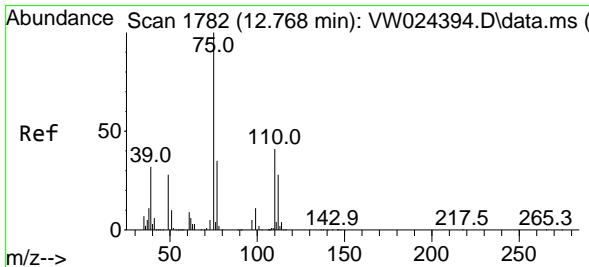
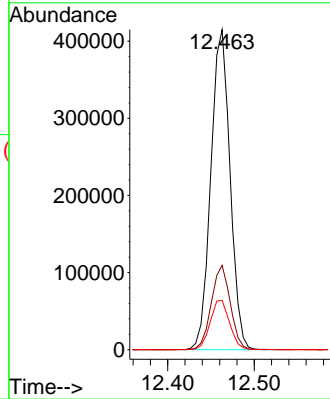
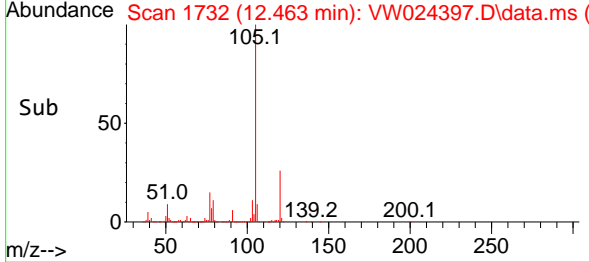


Tgt Ion:105 Resp: 63876
 Ion Ratio Lower Upper
 105 100
 120 26.0 21.4 32.0
 77 15.6 13.0 19.6

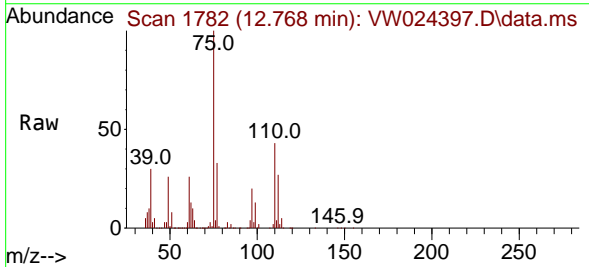
Manual Integrations

APPROVED

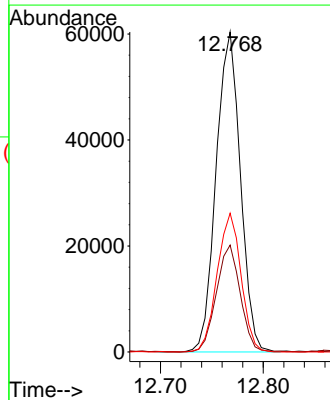
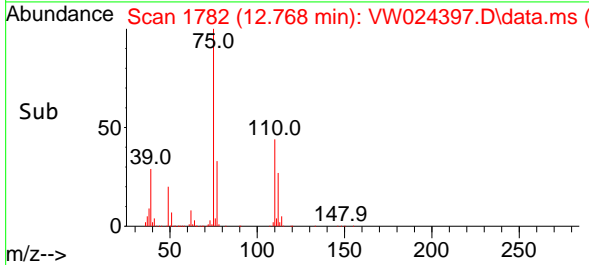
Reviewed By :Semsettin Yesilyurt 08/30/2022
 Supervised By :Mahesh Dadoda 08/30/2022

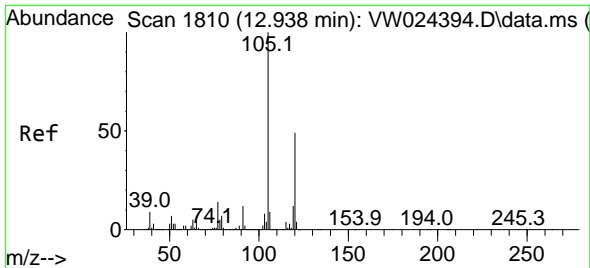


#61
 1,2,3-Trichloropropane
 Concen: 20.995 ug/L
 RT: 12.768 min Scan# 1782
 Delta R.T. 0.000 min
 Lab File: VW024397.D
 Acq: 27 Aug 2022 13:40



Tgt Ion: 75 Resp: 98958
 Ion Ratio Lower Upper
 75 100
 77 33.0 26.5 39.7
 110 42.6 33.8 50.8





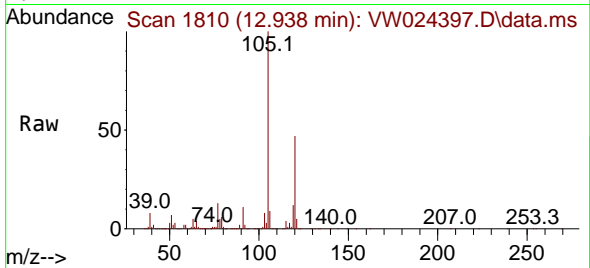
#62
 1,3,5-Trimethylbenzene
 Concen: 24.216 ug/L
 RT: 12.938 min Scan# 1810
 Delta R.T. 0.000 min
 Lab File: VW024397.D
 Acq: 27 Aug 2022 13:40

Instrument :

MSVOA_W

ClientSampleId :

DBVW6MS

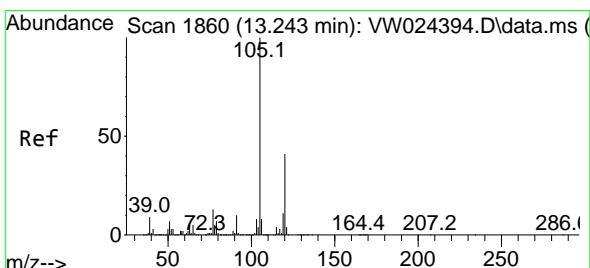
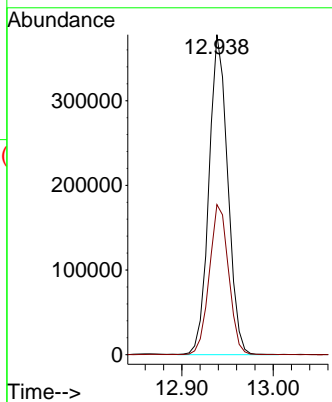
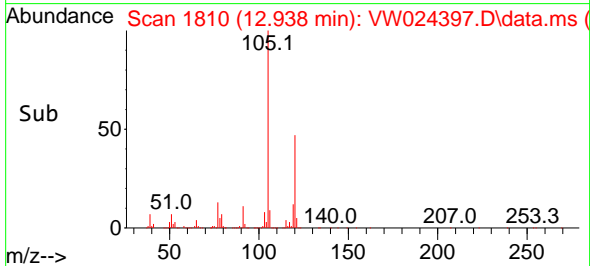


Tgt Ion:105 Resp: 540554
 Ion Ratio Lower Upper
 105 100
 120 48.2 38.4 57.6

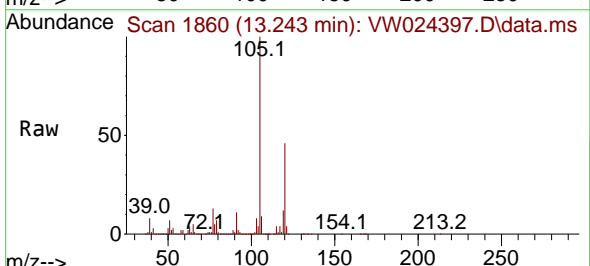
Manual Integrations

APPROVED

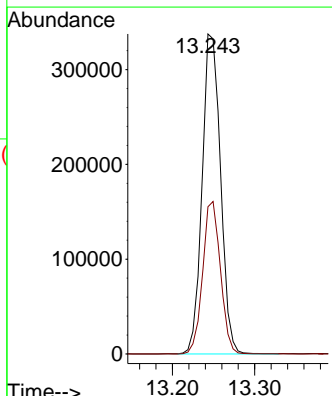
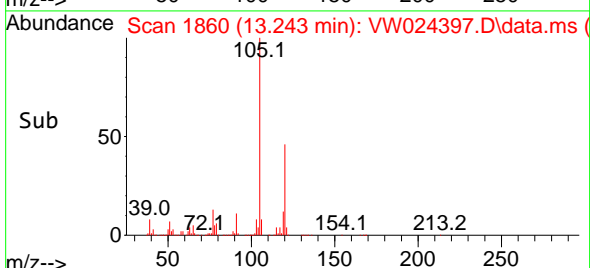
Reviewed By :Semsettin Yesilyurt 08/30/2022
 Supervised By :Mahesh Dadoda 08/30/2022

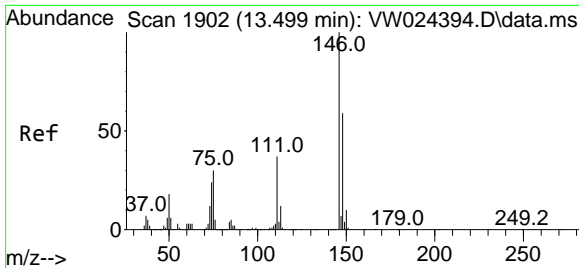


#63
 1,2,4-Trimethylbenzene
 Concen: 24.232 ug/L
 RT: 13.243 min Scan# 1860
 Delta R.T. 0.000 min
 Lab File: VW024397.D
 Acq: 27 Aug 2022 13:40



Tgt Ion:105 Resp: 525405
 Ion Ratio Lower Upper
 105 100
 120 46.0 36.2 54.2





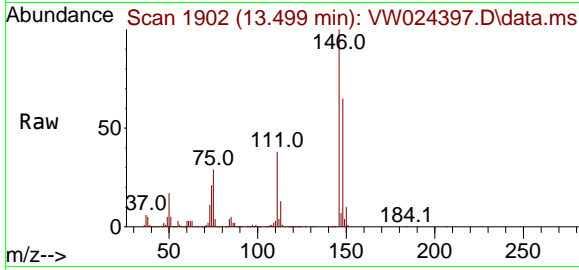
#64
 1,3-Dichlorobenzene
 Concen: 21.217 ug/L
 RT: 13.499 min Scan# 1902
 Delta R.T. 0.000 min
 Lab File: VW024397.D
 Acq: 27 Aug 2022 13:40

Instrument :

MSVOA_W

ClientSampleId :

DBVW6MS

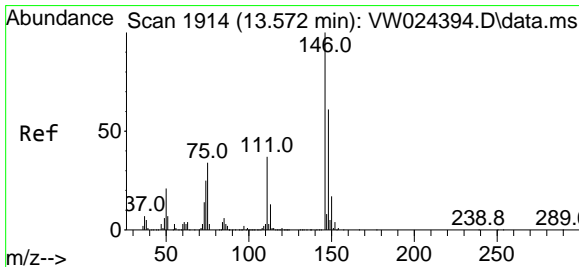
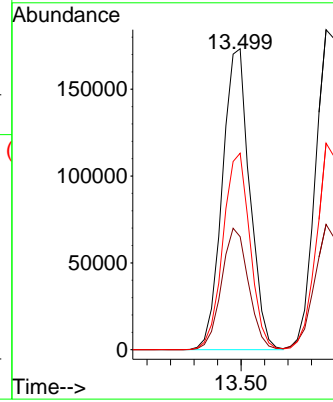
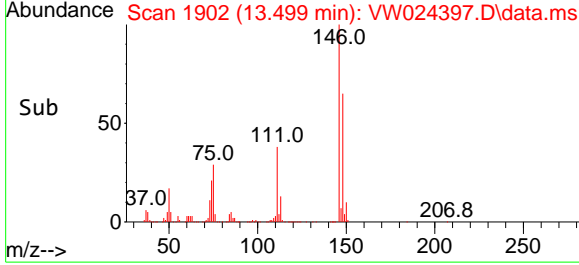


Tgt Ion:146 Resp: 28083
 Ion Ratio Lower Upper
 146 100
 111 37.6 27.0 50.2
 148 65.3 44.9 83.3

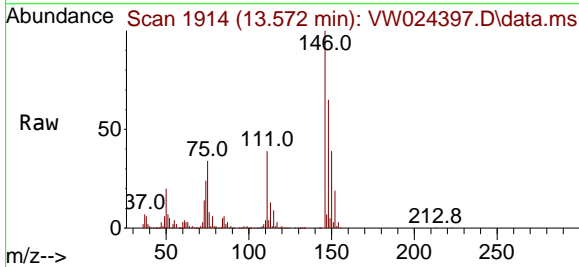
Manual Integrations

APPROVED

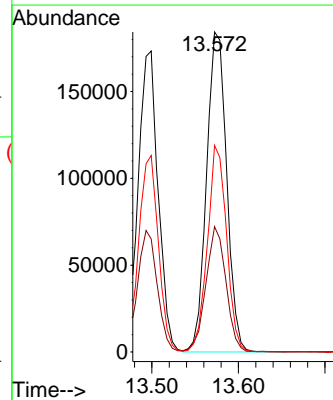
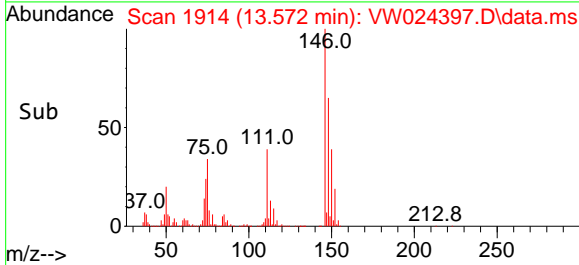
Reviewed By :Semsettin Yesilyurt 08/30/2022
 Supervised By :Mahesh Dadoda 08/30/2022

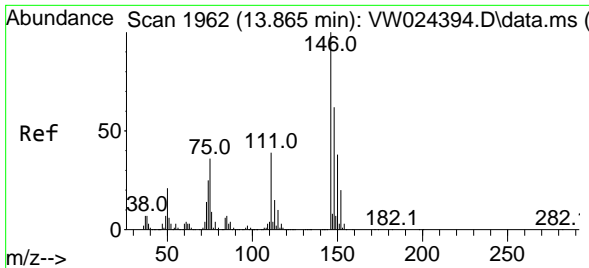


#65
 1,4-Dichlorobenzene
 Concen: 21.279 ug/L
 RT: 13.572 min Scan# 1914
 Delta R.T. 0.000 min
 Lab File: VW024397.D
 Acq: 27 Aug 2022 13:40



Tgt Ion:146 Resp: 297359
 Ion Ratio Lower Upper
 146 100
 111 39.2 27.7 51.5
 148 64.5 46.5 86.5





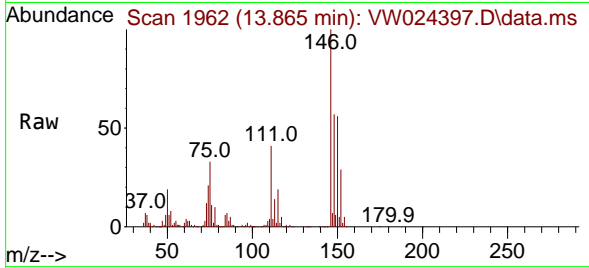
#67
 1,2-Dichlorobenzene
 Concen: 21.490 ug/L
 RT: 13.865 min Scan# 1962
 Delta R.T. 0.000 min
 Lab File: VW024397.D
 Acq: 27 Aug 2022 13:40

Instrument :

MSVOA_W

ClientSampleId :

DBVW6MS

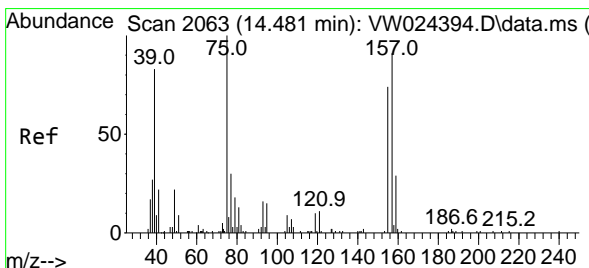
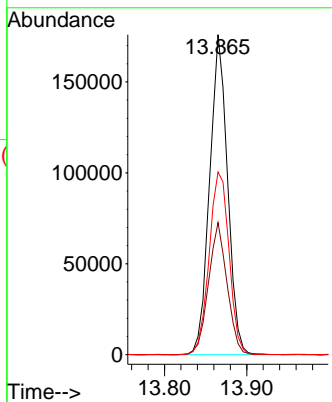
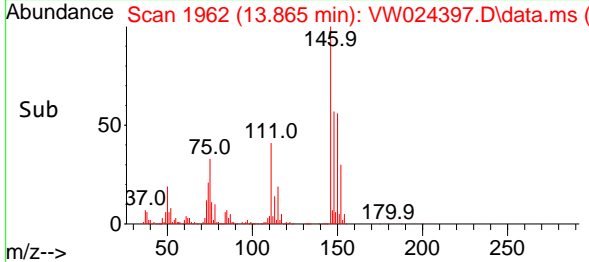


Tgt Ion:146 Resp: 26663
 Ion Ratio Lower Upper
 146 100
 111 41.3 34.5 51.7
 148 57.1 50.6 75.8

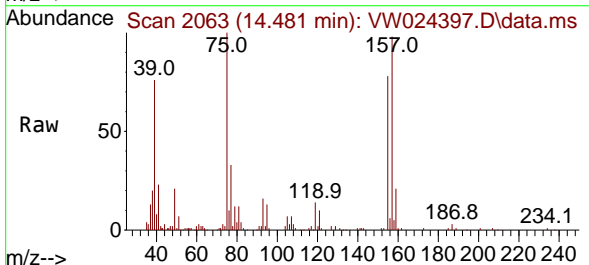
Manual Integrations

APPROVED

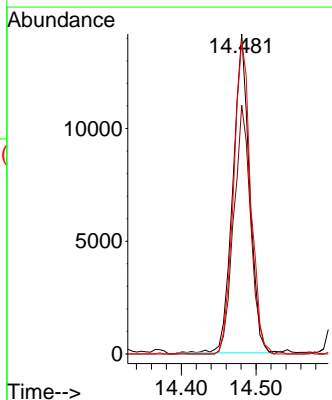
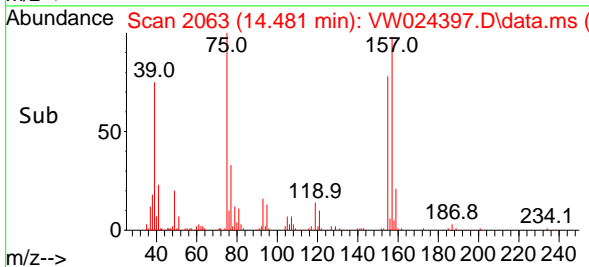
Reviewed By :Semsettin Yesilyurt 08/30/2022
 Supervised By :Mahesh Dadoda 08/30/2022

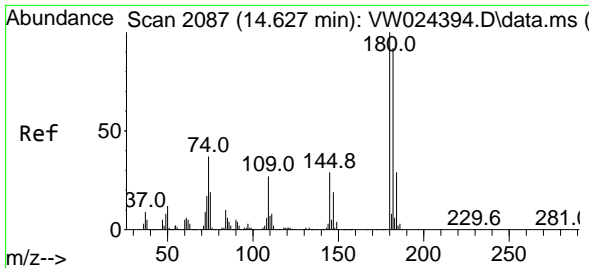


#68
 1,2-Dibromo-3-chloropropane
 Concen: 18.465 ug/L
 RT: 14.481 min Scan# 2063
 Delta R.T. 0.000 min
 Lab File: VW024397.D
 Acq: 27 Aug 2022 13:40



Tgt Ion: 75 Resp: 21866
 Ion Ratio Lower Upper
 75 100
 155 77.7 63.9 95.9
 157 97.8 72.2 108.4





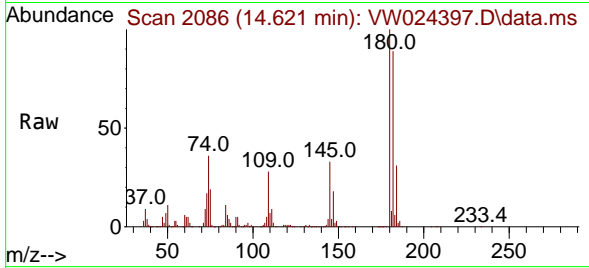
#69
 1,3,5-Trichlorobenzene
 Concen: 20.859 ug/L
 RT: 14.621 min Scan# 2086
 Delta R.T. -0.006 min
 Lab File: VW024397.D
 Acq: 27 Aug 2022 13:40

Instrument :

MSVOA_W

ClientSampleId :

DBVW6MS

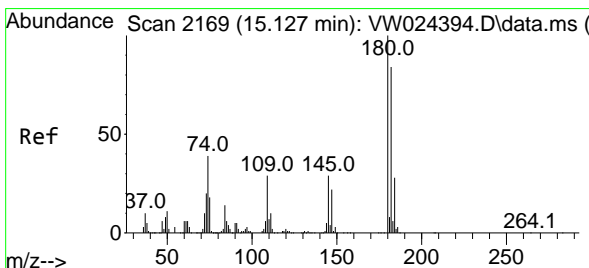
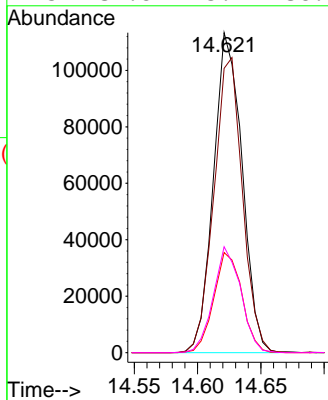
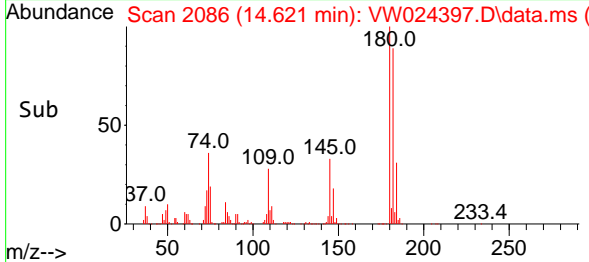


Tgt Ion:180 Resp: 178199
 Ion Ratio Lower Upper
 180 100
 182 92.1 76.6 114.8
 184 30.9 24.5 36.7
 145 31.8 25.9 38.9

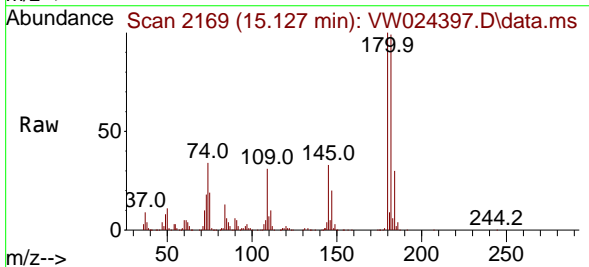
Manual Integrations

APPROVED

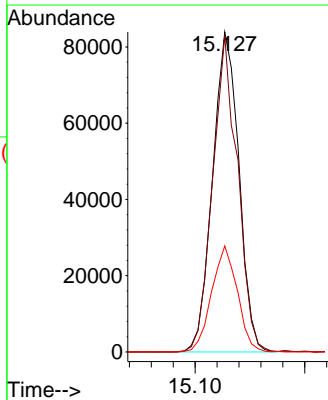
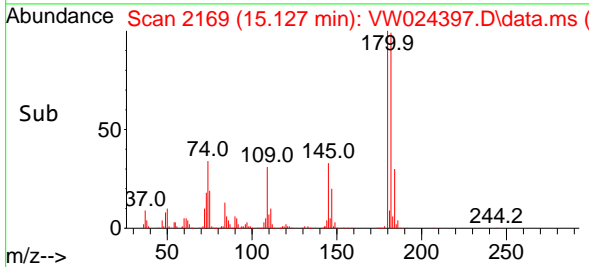
Reviewed By :Semsettin Yesilyurt 08/30/2022
 Supervised By :Mahesh Dadoda 08/30/2022

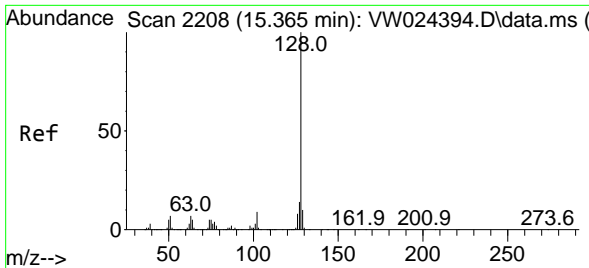


#70
 1,2,4-trichlorobenzene
 Concen: 21.057 ug/L
 RT: 15.127 min Scan# 2169
 Delta R.T. 0.000 min
 Lab File: VW024397.D
 Acq: 27 Aug 2022 13:40



Tgt Ion:180 Resp: 139841
 Ion Ratio Lower Upper
 180 100
 182 93.5 72.6 109.0
 145 32.4 26.2 39.2





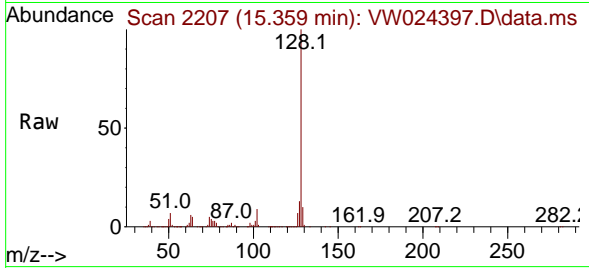
#71
 Naphthalene
 Concen: 22.740 ug/L
 RT: 15.359 min Scan# 2207
 Delta R.T. -0.006 min
 Lab File: VW024397.D
 Acq: 27 Aug 2022 13:40

Instrument :

MSVOA_W

ClientSampleId :

DBVW6MS

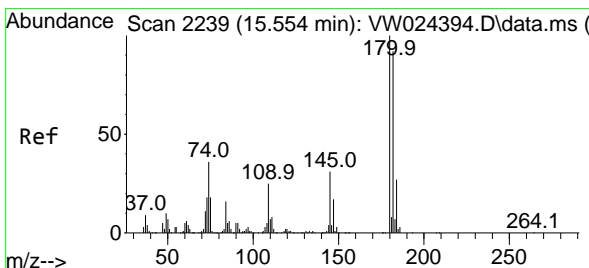
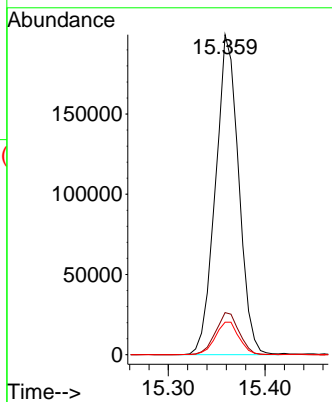
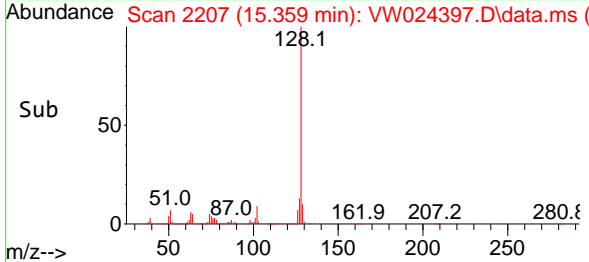


Tgt Ion:128 Resp: 33167
 Ion Ratio Lower Upper
 128 100
 127 13.4 10.5 15.7
 129 10.4 8.3 12.5

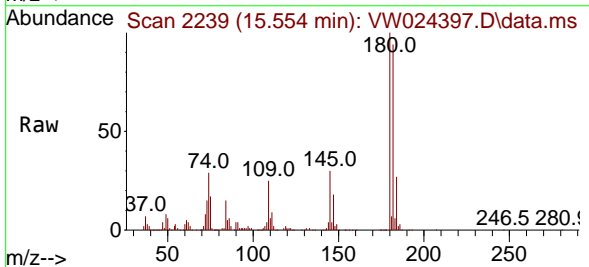
Manual Integrations

APPROVED

Reviewed By :Semsettin Yesilyurt 08/30/2022
 Supervised By :Mahesh Dadoda 08/30/2022



#72
 1,2,3-Trichlorobenzene
 Concen: 20.319 ug/L
 RT: 15.554 min Scan# 2239
 Delta R.T. 0.000 min
 Lab File: VW024397.D
 Acq: 27 Aug 2022 13:40



Tgt Ion:180 Resp: 127535
 Ion Ratio Lower Upper
 180 100
 182 99.3 74.6 111.8
 145 34.4 26.6 40.0

