

Data Path : Z:\VOASRV\HPCHEM1\MSVOA W\DATA\VW082819\
 Data File : VW012261.D
 Acq On : 28 Aug 2019 18:15
 Operator : SY/VA
 Sample : K4510-03
 Misc : 5.04G/5ML/MSVOA W/SOIL
 ALS Vial : 20 Sample Multiplier: 1

Instrument :
 MSVOA_W
 ClientSampleId :
 SB-41-11.5-12.0

Quant Time: Aug 29 06:58:44 2019
 Quant Method : Z:\VOASRV\HPCHEM1\MSVOA_W\METHOD\82W082319S.M
 Quant Title : SW846 8260
 QLast Update : Mon Aug 26 07:18:31 2019
 Response via : Initial Calibration

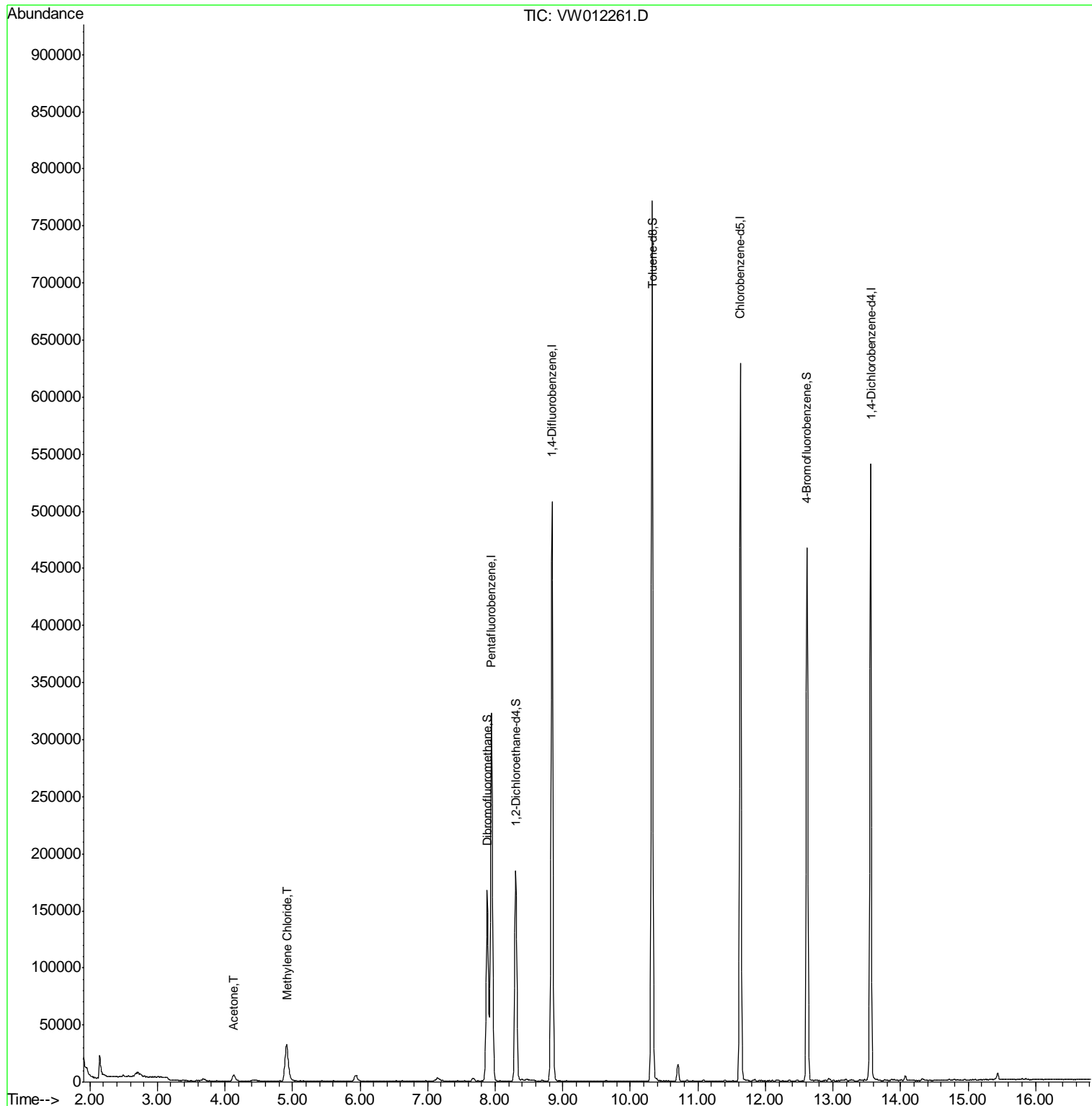
| Internal Standards | R.T. | QIon | Response | Conc | Units | Dev(Min) |
|-----------------------------|-------|------|----------|--------|-------|--------------------|
| 1) Pentafluorobenzene | 7.95 | 168 | 235204 | 50.00 | ug/l | 0.00 |
| 34) 1,4-Difluorobenzene | 8.84 | 114 | 396681 | 50.00 | ug/l | 0.00 |
| 63) Chlorobenzene-d5 | 11.63 | 117 | 328791 | 50.00 | ug/l | 0.00 |
| 72) 1,4-Dichlorobenzene-d4 | 13.56 | 152 | 135742 | 50.00 | ug/l | 0.00 |
| System Monitoring Compounds | | | | | | |
| 33) 1,2-Dichloroethane-d4 | 8.30 | 65 | 144605 | 51.72 | ug/l | 0.00 |
| Spiked Amount | | | | | | |
| | | | | | | Recovery = 103.44% |
| 35) Dibromofluoromethane | 7.88 | 113 | 117088 | 49.45 | ug/l | 0.00 |
| Spiked Amount | | | | | | |
| | | | | | | Recovery = 98.90% |
| 50) Toluene-d8 | 10.32 | 98 | 477943 | 49.78 | ug/l | 0.00 |
| Spiked Amount | | | | | | |
| | | | | | | Recovery = 99.56% |
| 62) 4-Bromofluorobenzene | 12.62 | 95 | 155872 | 46.06 | ug/l | 0.00 |
| Spiked Amount | | | | | | |
| | | | | | | Recovery = 92.12% |
| Target Compounds | | | | | | |
| 16) Acetone | 4.14 | 43 | 10995 | 15.384 | ug/l | 100 |
| 20) Methylene Chloride | 4.92 | 84 | 25162 | 9.313 | ug/l | 90 |

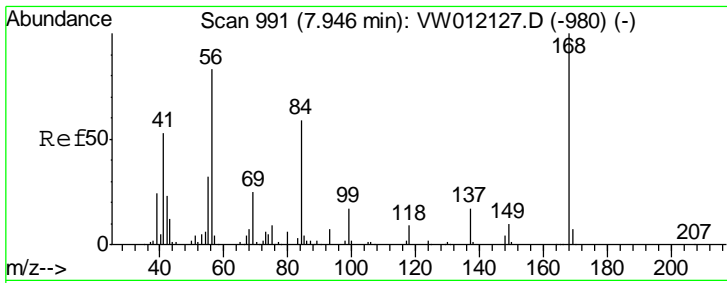
(#) = qualifier out of range (m) = manual integration (+) = signals summed

Data Path : Z:\VOASRV\HPCHEM1\MSVOA W\DATA\VW082819\
 Data File : VW012261.D
 Acq On : 28 Aug 2019 18:15
 Operator : SY/VA
 Sample : K4510-03
 Misc : 5.04G/5ML/MSVOA W/SOIL
 ALS Vial : 20 Sample Multiplier: 1

Instrument :
 MSVOA_W
 ClientSampleId :
 SB-41-11.5-12.0

Quant Time: Aug 29 06:58:44 2019
 Quant Method : Z:\VOASRV\HPCHEM1\MSVOA_W\METHOD\82W082319S.M
 Quant Title : SW846 8260
 QLast Update : Mon Aug 26 07:18:31 2019
 Response via : Initial Calibration

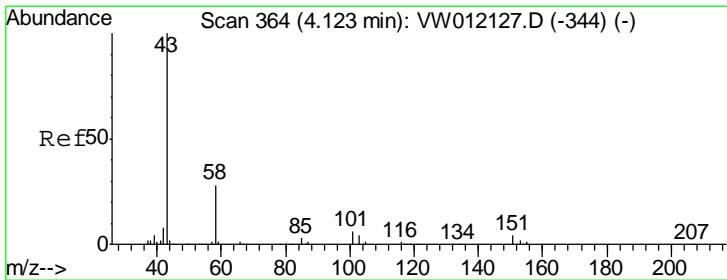
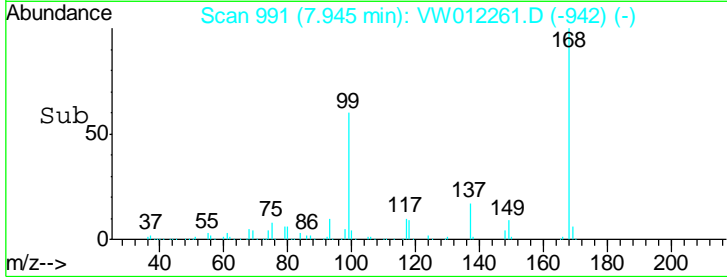
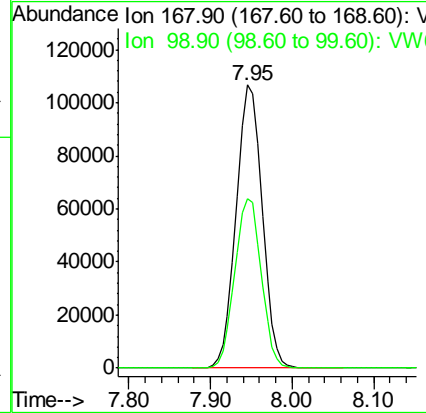
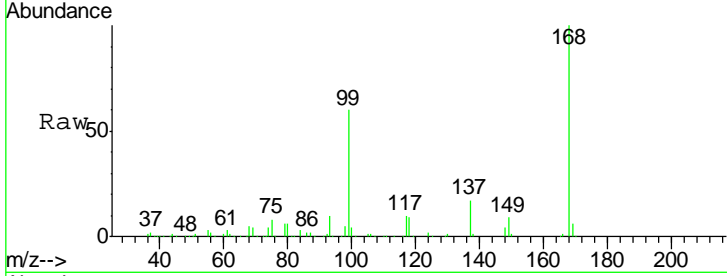




#1
 Pentafluorobenzene
 Concen: 50.000 ug/l
 RT: 7.95 min Scan# 991
 Delta R.T. -0.00 min
 Lab File: VW012261.D
 Acq: 28 Aug 2019 18:15

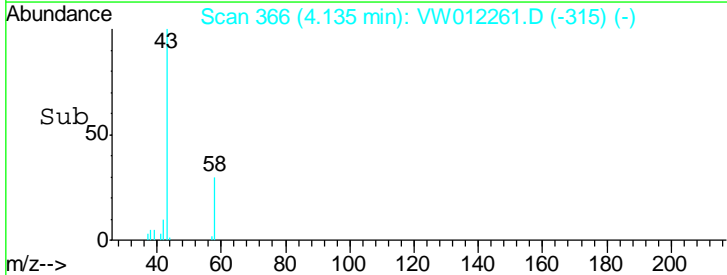
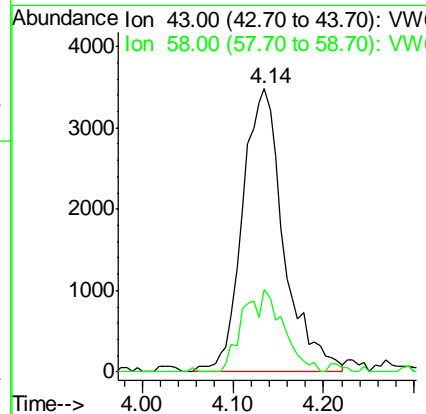
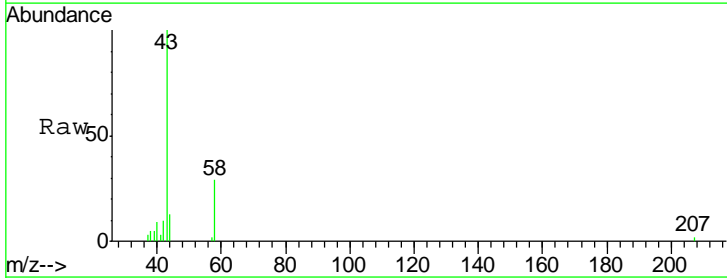
Instrument :
 MSVOA_W
 ClientSampleId :
 SB-41-11.5-12.0

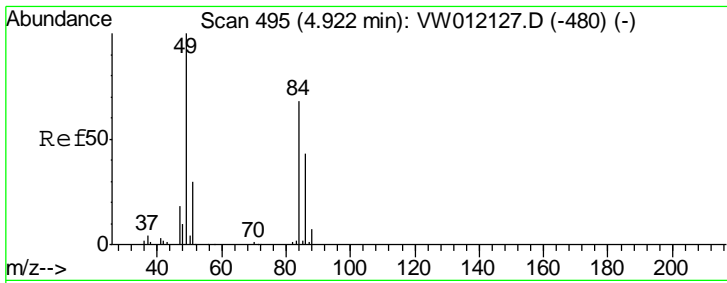
| Tgt Ion | Resp | Lower | Upper |
|---------|------|-------|-------|
| 168 | 100 | | |
| 99 | 59.8 | 49.2 | 73.8 |



#16
 Acetone
 Concen: 15.384 ug/l
 RT: 4.14 min Scan# 366
 Delta R.T. 0.01 min
 Lab File: VW012261.D
 Acq: 28 Aug 2019 18:15

| Tgt Ion | Resp | Lower | Upper |
|---------|------|-------|-------|
| 43 | 100 | | |
| 58 | 27.8 | 22.4 | 33.6 |

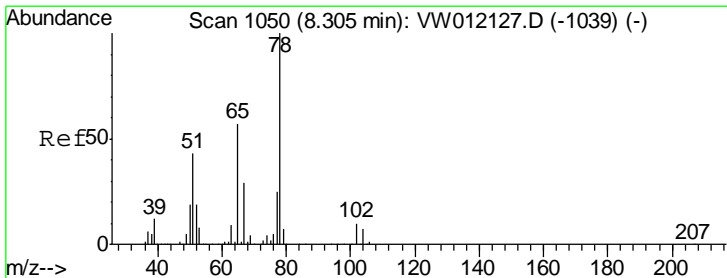
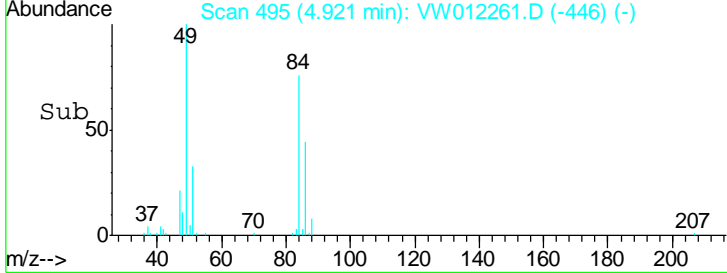
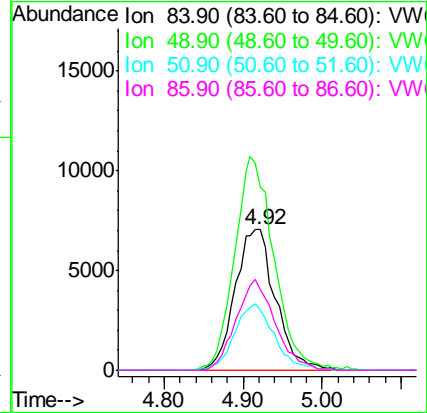
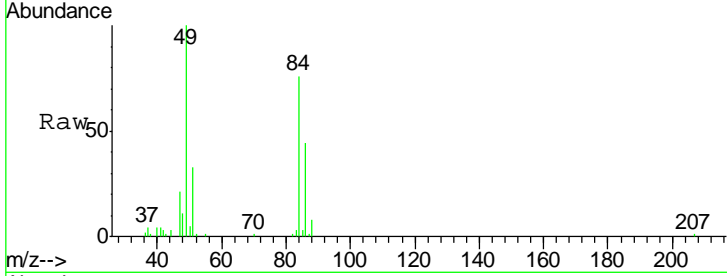




#20
 Methylene Chloride
 Concen: 9.313 ug/l
 RT: 4.92 min Scan# 495
 Delta R.T. -0.00 min
 Lab File: VW012261.D
 Acq: 28 Aug 2019 18:15

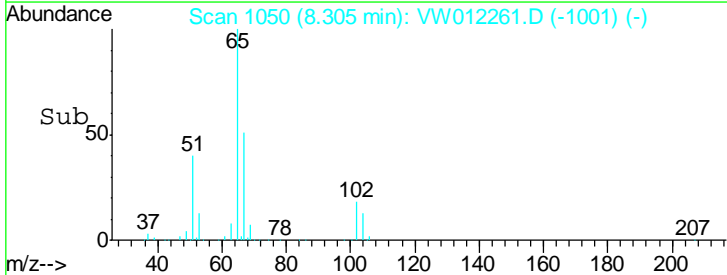
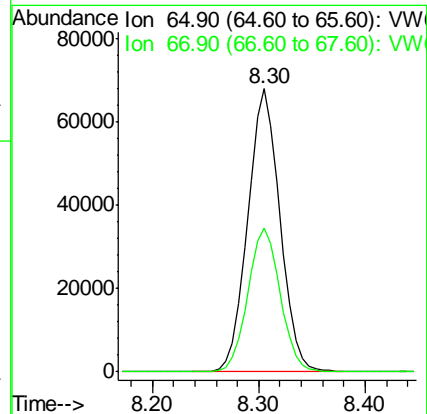
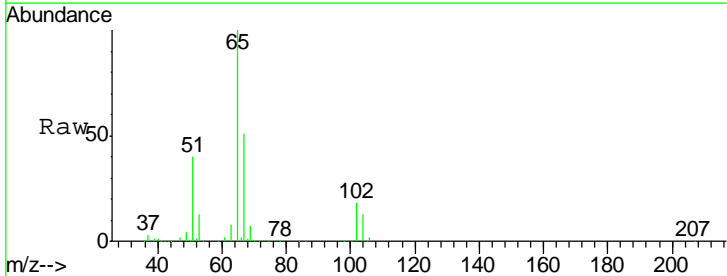
Instrument :
 MSVOA_W
 ClientSampled :
 SB-41-11.5-12.0

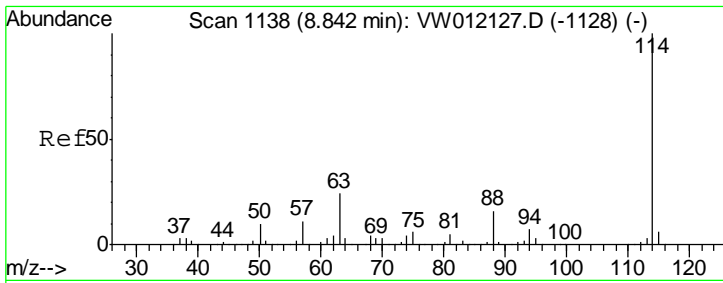
| Tgt Ion | Resp | Lower | Upper |
|---------|-------|-------|-------|
| 84 | 100 | | |
| 49 | 130.9 | 117.8 | 176.8 |
| 51 | 43.0 | 35.6 | 53.4 |
| 86 | 57.6 | 51.2 | 76.8 |



#33
 1,2-Dichloroethane-d4
 Concen: 51.719 ug/l
 RT: 8.30 min Scan# 1050
 Delta R.T. -0.00 min
 Lab File: VW012261.D
 Acq: 28 Aug 2019 18:15

| Tgt Ion | Resp | Lower | Upper |
|---------|------|-------|-------|
| 65 | 100 | | |
| 67 | 51.2 | 0.0 | 102.6 |

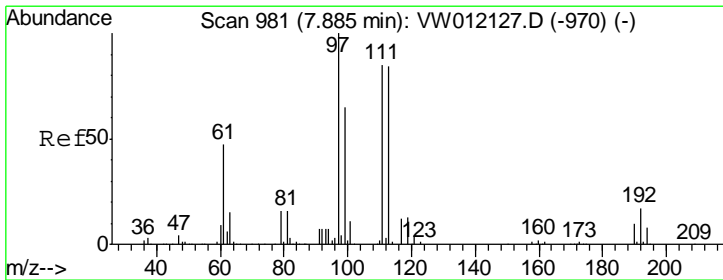
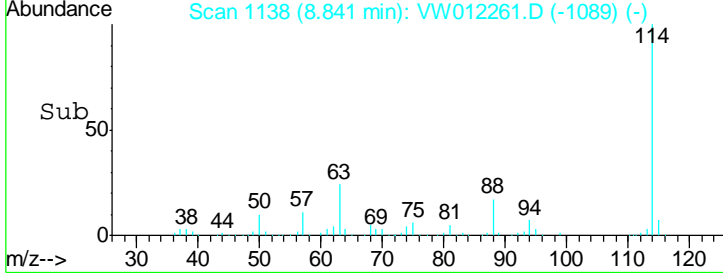
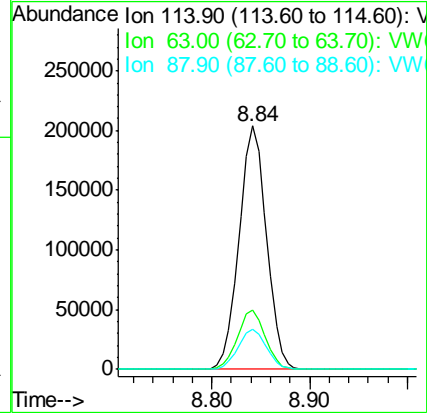
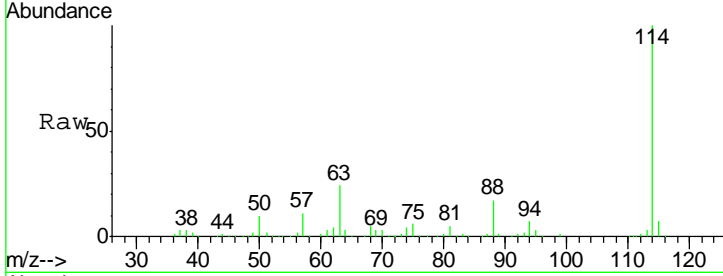




#34
 1,4-Difluorobenzene
 Concen: 50.000 ug/l
 RT: 8.84 min Scan# 1138
 Delta R.T. -0.00 min
 Lab File: VW012261.D
 Acq: 28 Aug 2019 18:15

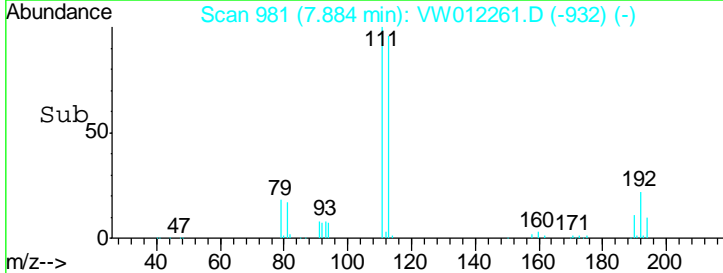
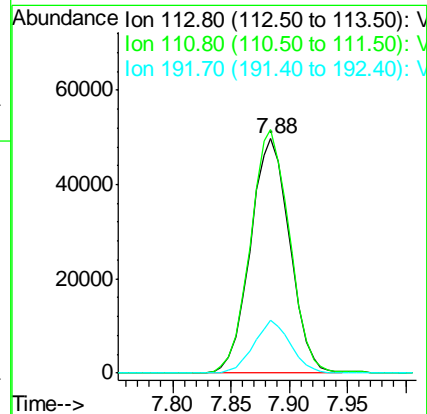
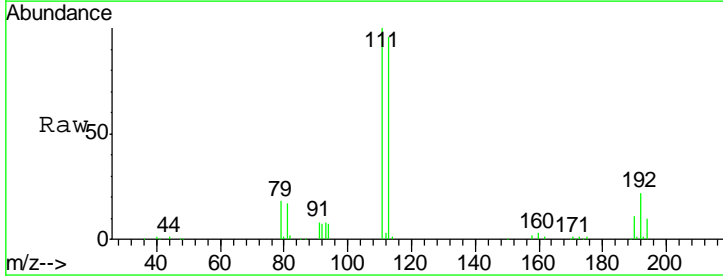
Instrument :
 MSVOA_W
 ClientSampled :
 SB-41-11.5-12.0

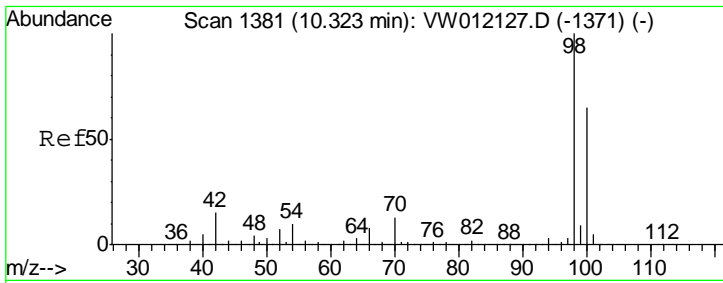
| Tgt Ion | Resp | Lower | Upper |
|---------|------|-------|-------|
| 114 | 100 | | |
| 63 | 24.1 | 0.0 | 48.6 |
| 88 | 16.7 | 0.0 | 32.2 |



#35
 Dibromofluoromethane
 Concen: 49.450 ug/l
 RT: 7.88 min Scan# 981
 Delta R.T. -0.00 min
 Lab File: VW012261.D
 Acq: 28 Aug 2019 18:15

| Tgt Ion | Resp | Lower | Upper |
|---------|-------|-------|-------|
| 113 | 100 | | |
| 111 | 103.8 | 82.7 | 124.1 |
| 192 | 21.0 | 16.2 | 24.2 |

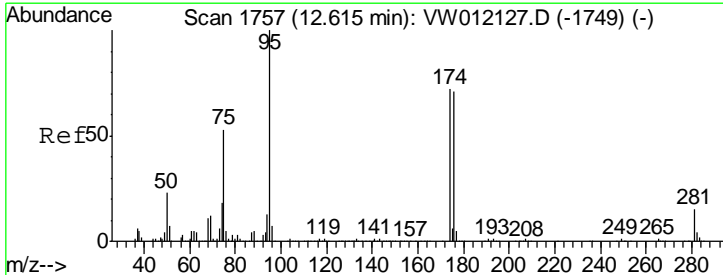
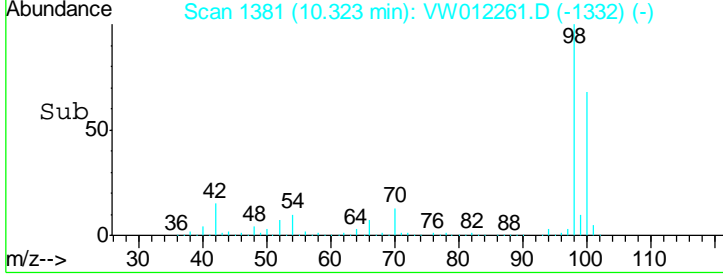
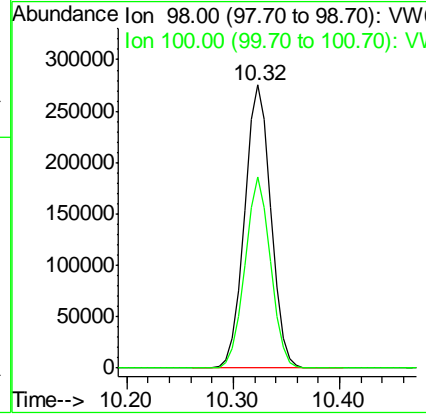
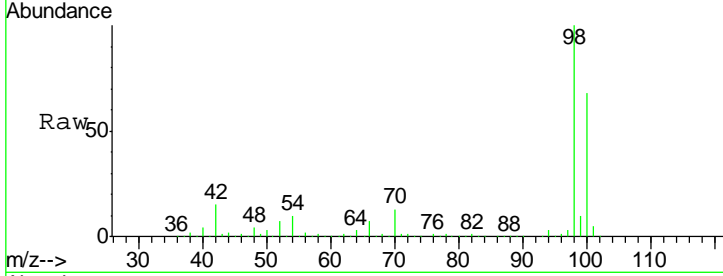




#50
 Toluene-d8
 Concen: 49.782 ug/l
 RT: 10.32 min Scan# 1381
 Delta R.T. -0.00 min
 Lab File: VW012261.D
 Acq: 28 Aug 2019 18:15

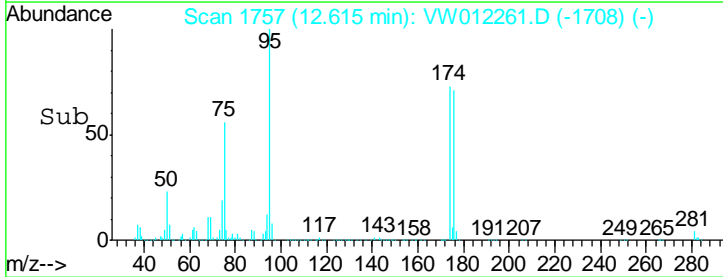
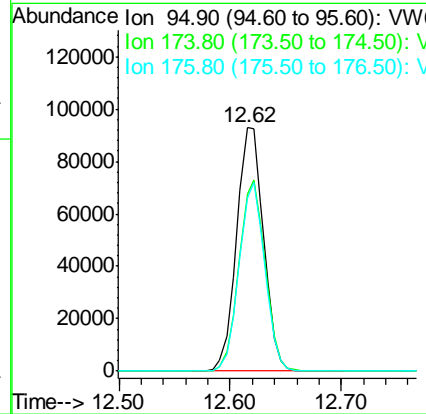
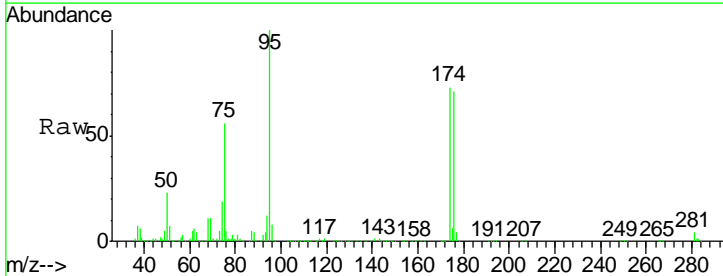
Instrument : MSVOA_W
 ClientSampled : SB-41-11.5-12.0

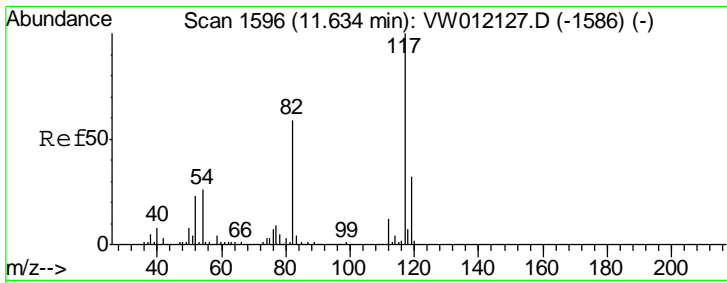
| Tgt Ion | Resp | Lower | Upper |
|---------|--------|-------|-------|
| 98 | 477943 | | |
| 100 | 100 | | |
| 100 | 65.7 | 52.4 | 78.6 |



#62
 4-Bromofluorobenzene
 Concen: 46.058 ug/l
 RT: 12.62 min Scan# 1757
 Delta R.T. -0.00 min
 Lab File: VW012261.D
 Acq: 28 Aug 2019 18:15

| Tgt Ion | Resp | Lower | Upper |
|---------|--------|-------|-------|
| 95 | 155872 | | |
| 95 | 100 | | |
| 174 | 76.0 | 0.0 | 150.8 |
| 176 | 73.7 | 0.0 | 148.6 |

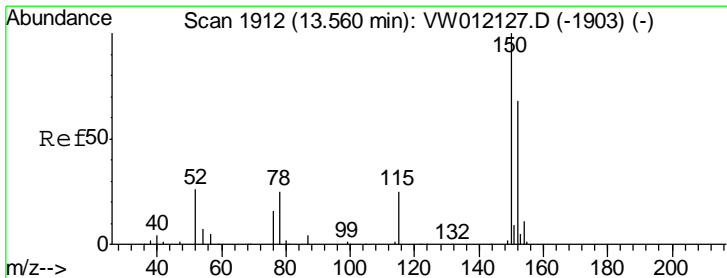
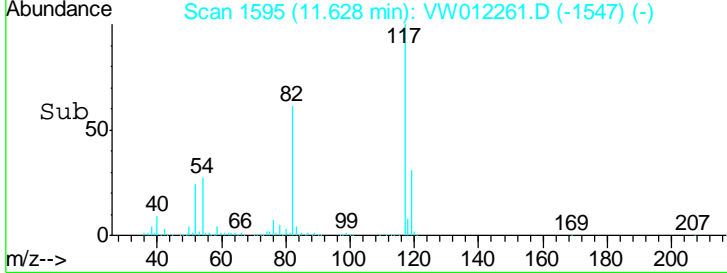
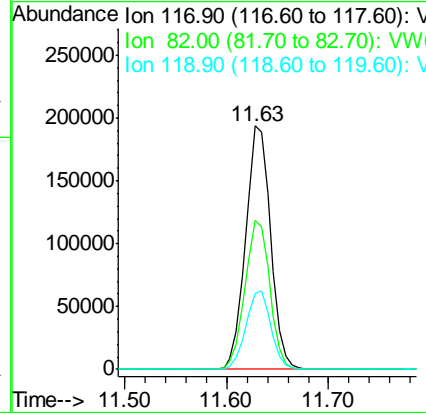
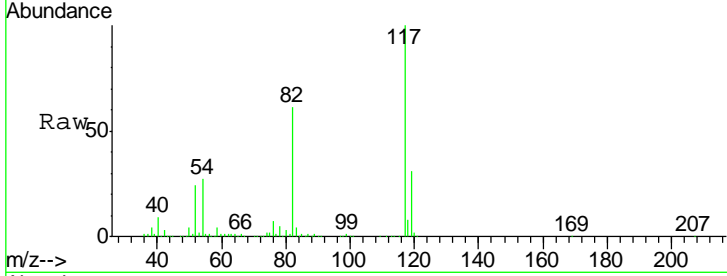




#63
 Chlorobenzene-d5
 Concen: 50.000 ug/l
 RT: 11.63 min Scan# 1595
 Delta R.T. -0.01 min
 Lab File: VW012261.D
 Acq: 28 Aug 2019 18:15

Instrument : MSVOA_W
 ClientSampled : SB-41-11.5-12.0

| Tgt Ion | Resp | Lower | Upper |
|---------|------|-------|-------|
| 117 | 100 | | |
| 82 | 61.4 | 47.4 | 71.2 |
| 119 | 31.4 | 25.4 | 38.2 |



#72
 1,4-Dichlorobenzene-d4
 Concen: 50.000 ug/l
 RT: 13.56 min Scan# 1912
 Delta R.T. -0.00 min
 Lab File: VW012261.D
 Acq: 28 Aug 2019 18:15

| Tgt Ion | Resp | Lower | Upper |
|---------|-------|-------|-------|
| 152 | 100 | | |
| 115 | 60.9 | 30.1 | 90.3 |
| 150 | 158.9 | 0.0 | 345.8 |

