

Data Path : Z:\VOASRV\HPCHEM1\MSVOA W\DATA\VW082919\  
 Data File : VW012301.D  
 Acq On : 29 Aug 2019 14:20  
 Operator : SY/VA  
 Sample : K4595-05  
 Misc : 5.81G/5ML/MSVOA W/SOIL  
 ALS Vial : 11 Sample Multiplier: 1

Instrument :  
 MSVOA\_W  
 ClientSampleId :  
 S503-K2-9.5-10.0-082819

Quant Time: Aug 30 07:28:14 2019  
 Quant Method : Z:\VOASRV\HPCHEM1\MSVOA\_W\METHOD\82W082319S.M  
 Quant Title : SW846 8260  
 QLast Update : Mon Aug 26 07:18:31 2019  
 Response via : Initial Calibration

Internal Standards	R.T.	QIon	Response	Conc	Units	Dev(Min)
1) Pentafluorobenzene	7.95	168	236969	50.00	ug/l	0.00
34) 1,4-Difluorobenzene	8.84	114	390718	50.00	ug/l	0.00
63) Chlorobenzene-d5	11.63	117	323398	50.00	ug/l	0.00
72) 1,4-Dichlorobenzene-d4	13.56	152	135963	50.00	ug/l	0.00

System Monitoring Compounds	R.T.	QIon	Response	Conc	Units	Dev(Min)
33) 1,2-Dichloroethane-d4	8.31	65	142366	50.54	ug/l	0.00
Spiked Amount				50.000		
Recovery						101.08%
35) Dibromofluoromethane	7.88	113	115334	49.45	ug/l	0.00
Spiked Amount				50.000		
Recovery						98.90%
50) Toluene-d8	10.32	98	474483	50.18	ug/l	0.00
Spiked Amount				50.000		
Recovery						100.36%
62) 4-Bromofluorobenzene	12.62	95	155237	46.57	ug/l	0.00
Spiked Amount				50.000		
Recovery						93.14%

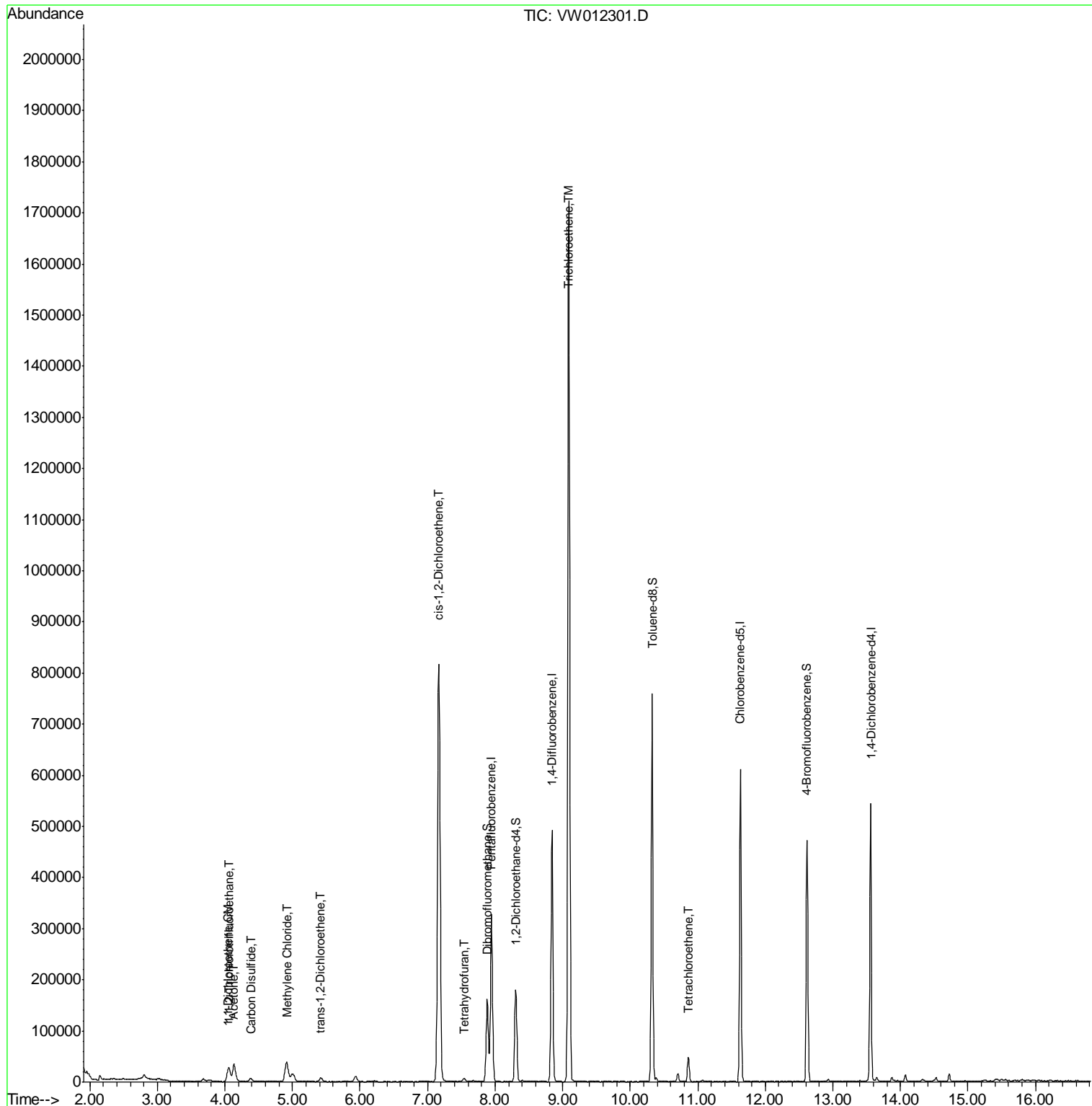
Target Compounds	R.T.	QIon	Response	Conc	Units	Qvalue
9) 1,1,2-Trichlorotrifluoroet	4.06	101	19625	8.310	ug/l	100
12) 1,1-Dichloroethene	4.04	96	3153	1.327	ug/l	90
16) Acetone	4.14	43	64709	89.864	ug/l	96
17) Carbon Disulfide	4.39	76	13586	1.891	ug/l	99
20) Methylene Chloride	4.91	84	30895	11.349	ug/l	95
21) trans-1,2-Dichloroethene	5.42	96	4062	1.594	ug/l #	83
27) cis-1,2-Dichloroethene	7.17	96	466974	171.477	ug/l	92
29) Tetrahydrofuran	7.53	42	6040	10.289	ug/l	98
44) Trichloroethene	9.09	130	580337	216.533	ug/l	97
64) Tetrachloroethene	10.87	164	10921	5.209	ug/l	89

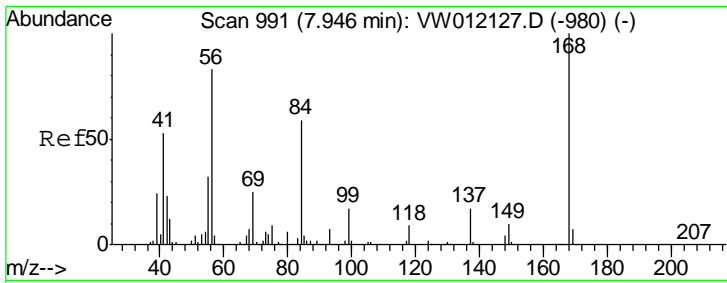
(#) = qualifier out of range (m) = manual integration (+) = signals summed

Data Path : Z:\VOASRV\HPCHEM1\MSVOA W\DATA\VW082919\  
 Data File : VW012301.D  
 Acq On : 29 Aug 2019 14:20  
 Operator : SY/VA  
 Sample : K4595-05  
 Misc : 5.81G/5ML/MSVOA W/SOIL  
 ALS Vial : 11 Sample Multiplier: 1

**Instrument :**  
 MSVOA\_W  
**Client Sampled :**  
 S503-K2-9.5-10.0-082819

Quant Time: Aug 30 07:28:14 2019  
 Quant Method : Z:\VOASRV\HPCHEM1\MSVOA\_W\METHOD\82W082319S.M  
 Quant Title : SW846 8260  
 QLast Update : Mon Aug 26 07:18:31 2019  
 Response via : Initial Calibration

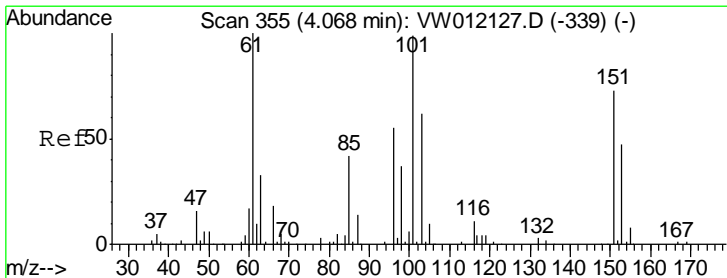
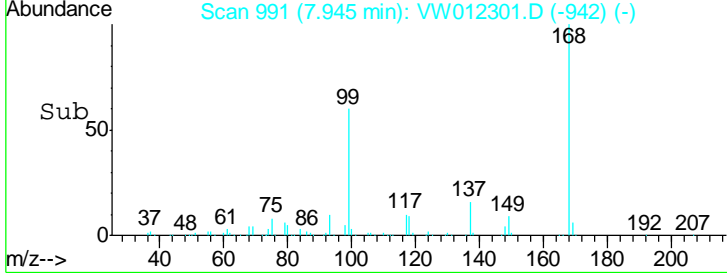
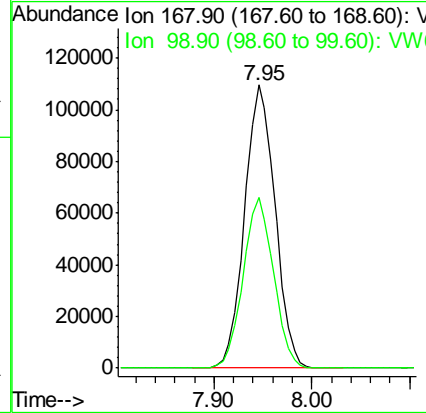
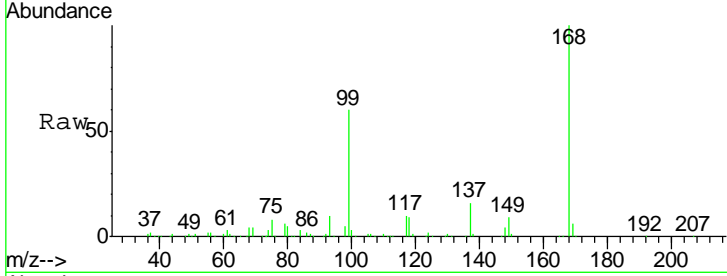




#1  
 Pentafluorobenzene  
 Concen: 50.000 ug/l  
 RT: 7.95 min Scan# 991  
 Delta R.T. -0.00 min  
 Lab File: VW012301.D  
 Acq: 29 Aug 2019 14:20

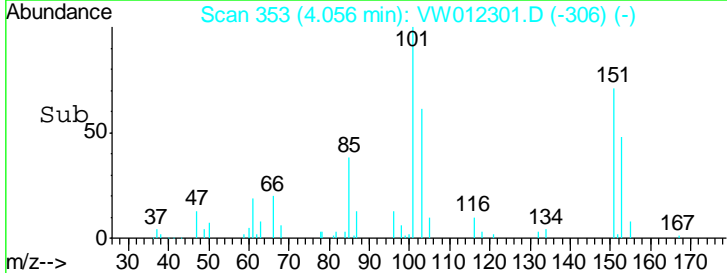
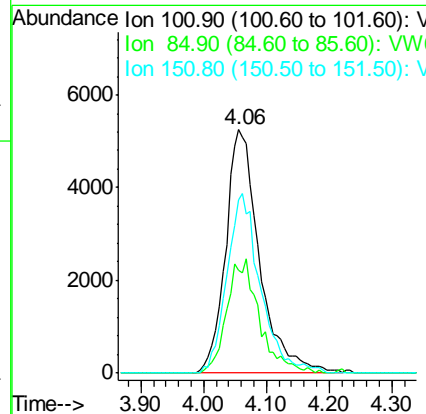
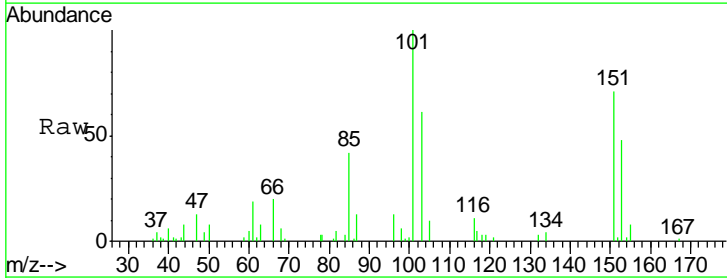
Instrument :  
 MSVOA\_W  
 ClientSampleId :  
 S503-K2-9.5-10.0-082819

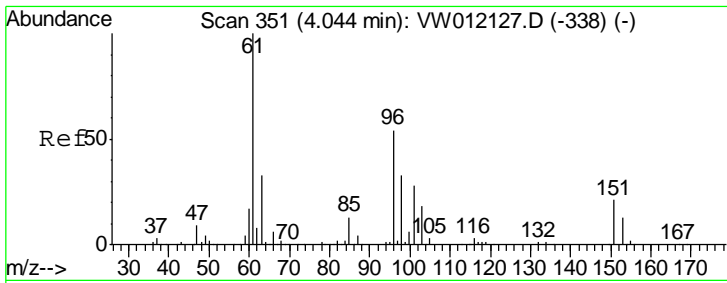
Tgt Ion	Resp	Lower	Upper
168	100		
99	60.4	49.2	73.8



#9  
 1,1,2-Trichlorotrifluoroethane  
 Concen: 8.310 ug/l  
 RT: 4.06 min Scan# 353  
 Delta R.T. -0.01 min  
 Lab File: VW012301.D  
 Acq: 29 Aug 2019 14:20

Tgt Ion	Resp	Lower	Upper
101	100		
85	45.0	35.8	53.6
151	73.0	58.6	87.8

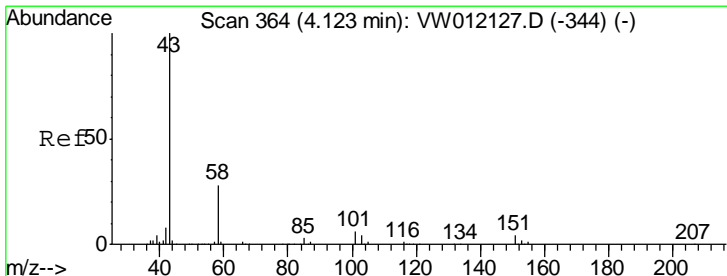
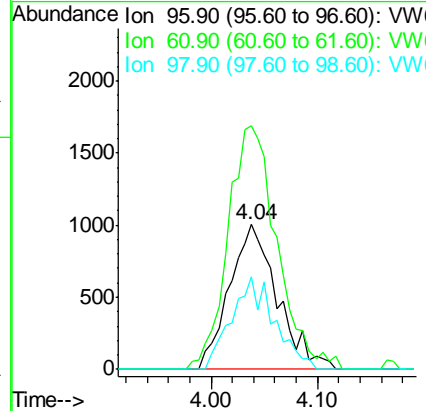
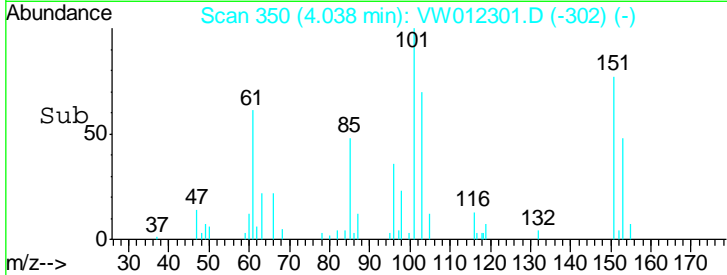
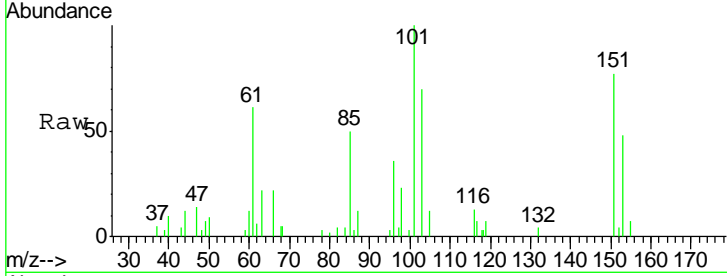




#12  
 1,1-Dichloroethene  
 Concen: 1.327 ug/l  
 RT: 4.04 min Scan# 350  
 Delta R.T. -0.01 min  
 Lab File: VW012301.D  
 Acq: 29 Aug 2019 14:20

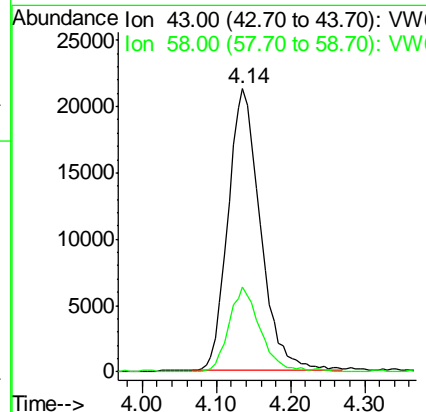
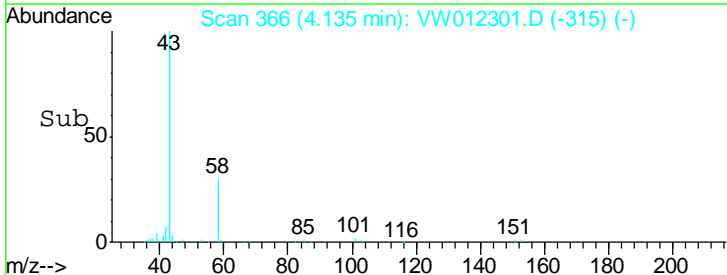
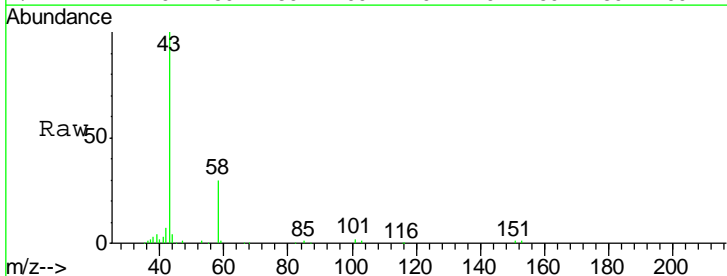
Instrument :  
 MSVOA\_W  
 ClientSampled :  
 S503-K2-9.5-10.0-082819

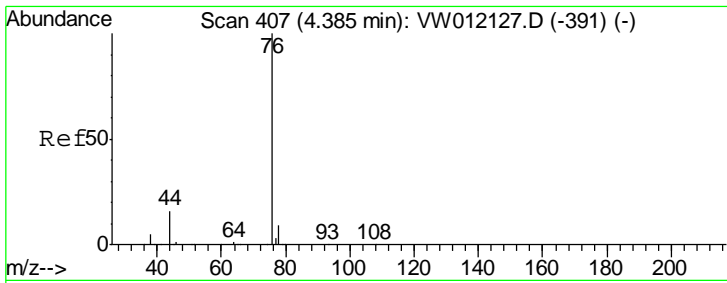
Tgt Ion	Resp	Lower	Upper
96	3153		
96	100		
61	168.6	149.1	223.7
98	63.8	49.4	74.2



#16  
 Acetone  
 Concen: 89.864 ug/l  
 RT: 4.14 min Scan# 366  
 Delta R.T. 0.01 min  
 Lab File: VW012301.D  
 Acq: 29 Aug 2019 14:20

Tgt Ion	Resp	Lower	Upper
43	64709		
43	100		
58	30.4	22.4	33.6

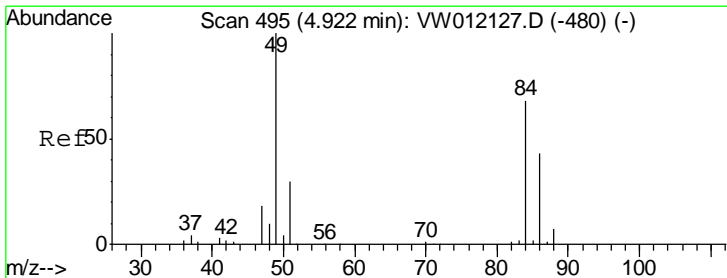
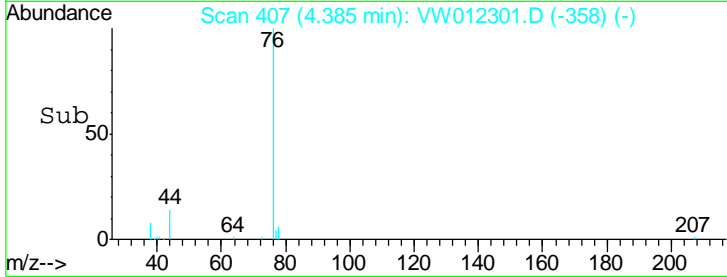
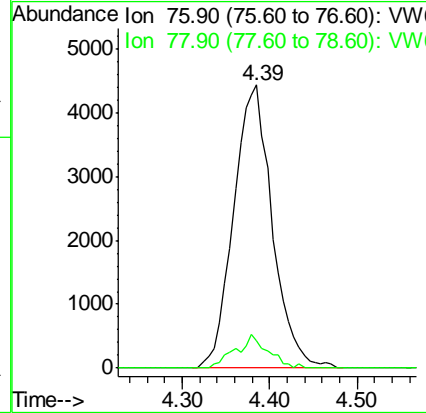
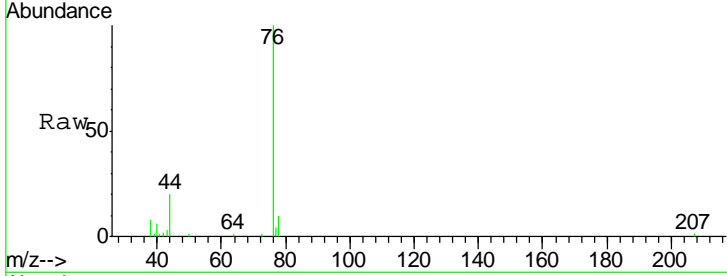




#17  
 Carbon Disulfide  
 Concen: 1.891 ug/l  
 RT: 4.39 min Scan# 407  
 Delta R.T. -0.00 min  
 Lab File: VW012301.D  
 Acq: 29 Aug 2019 14:20

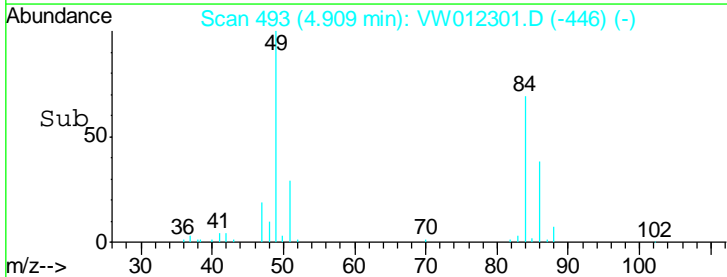
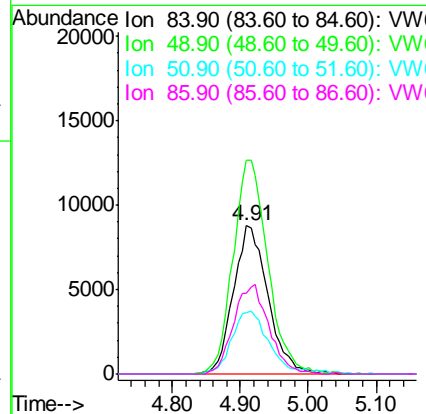
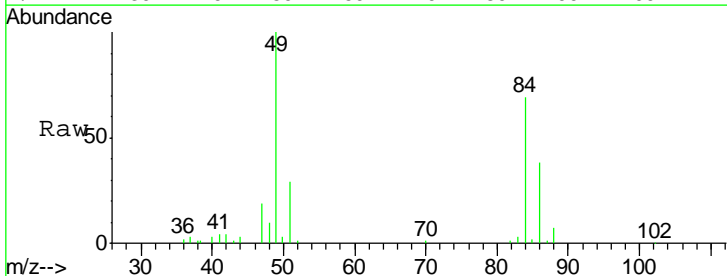
Instrument :  
 MSVOA\_W  
 ClientSampleId :  
 S503-K2-9.5-10.0-082819

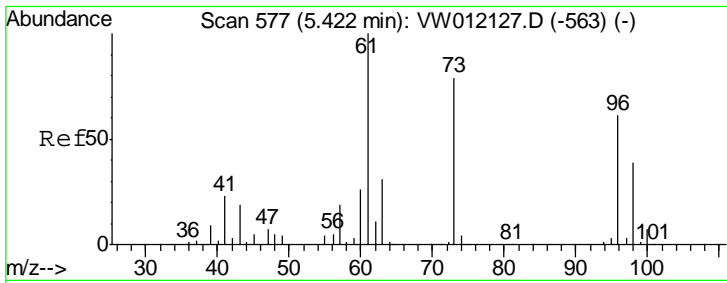
Tgt Ion	Resp	Lower	Upper
76	100		
78	9.5	7.3	10.9



#20  
 Methylene Chloride  
 Concen: 11.349 ug/l  
 RT: 4.91 min Scan# 493  
 Delta R.T. -0.01 min  
 Lab File: VW012301.D  
 Acq: 29 Aug 2019 14:20

Tgt Ion	Resp	Lower	Upper
84	100		
49	143.9	117.8	176.8
51	41.7	35.6	53.4
86	54.7	51.2	76.8

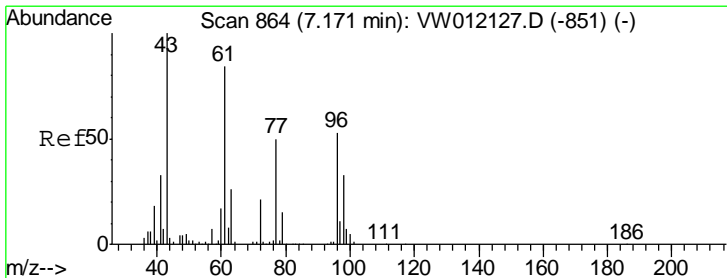
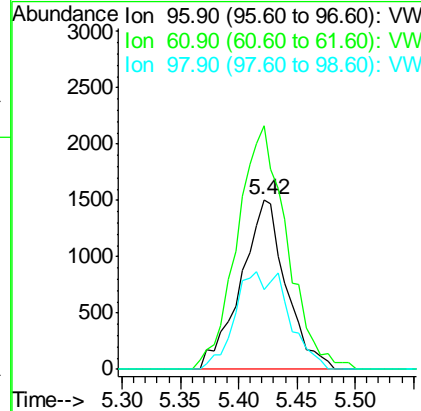
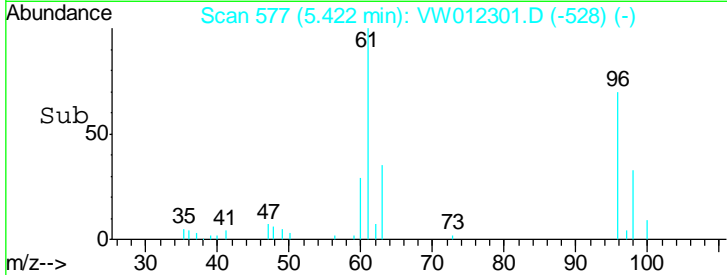
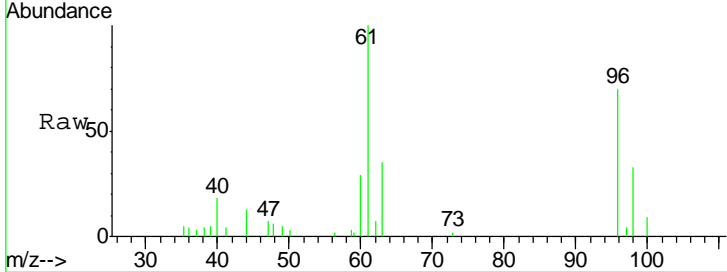




#21  
 trans-1,2-Dichloroethene  
 Concen: 1.594 ug/l  
 RT: 5.42 min Scan# 577  
 Delta R.T. -0.00 min  
 Lab File: VW012301.D  
 Acq: 29 Aug 2019 14:20

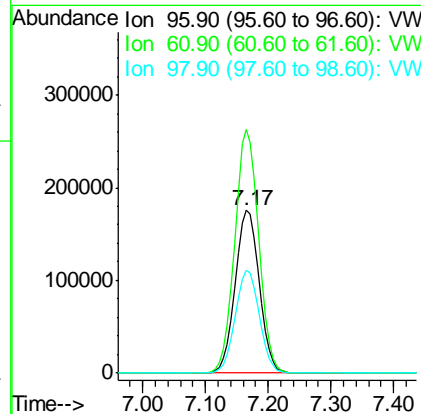
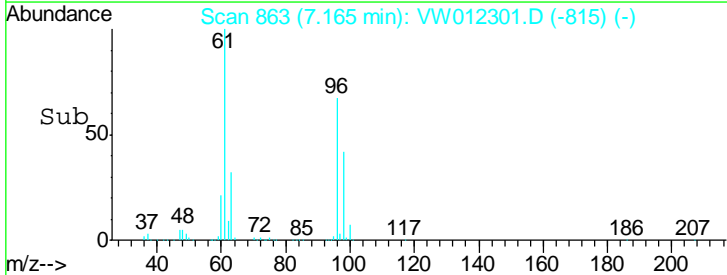
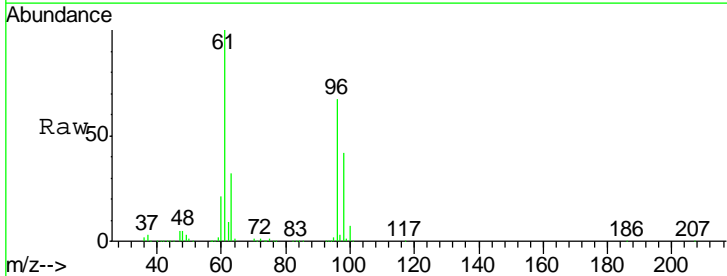
**Instrument :**  
 MSVOA\_W  
**ClientSampleId :**  
 S503-K2-9.5-10.0-082819

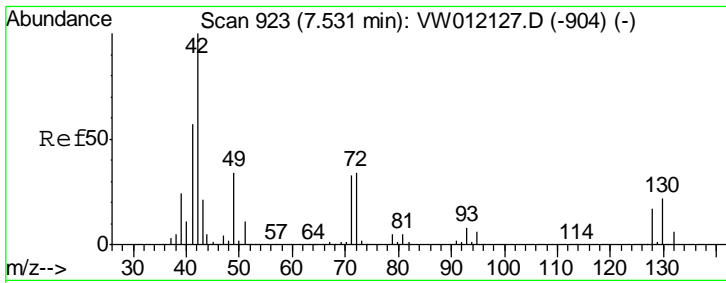
Tgt Ion	Resp	Lower	Upper
96	4062		
61	143.7	131.4	197.0
98	46.9	51.4	77.0#



#27  
 cis-1,2-Dichloroethene  
 Concen: 171.477 ug/l  
 RT: 7.17 min Scan# 863  
 Delta R.T. -0.01 min  
 Lab File: VW012301.D  
 Acq: 29 Aug 2019 14:20

Tgt Ion	Resp	Lower	Upper
96	466974		
61	148.1	0.0	326.6
98	63.3	0.0	127.4

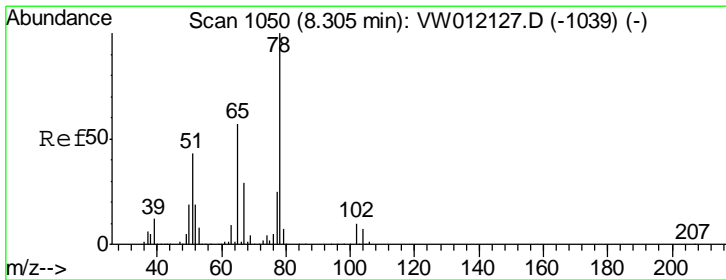
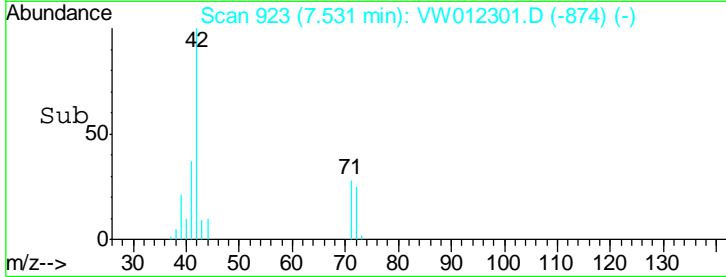
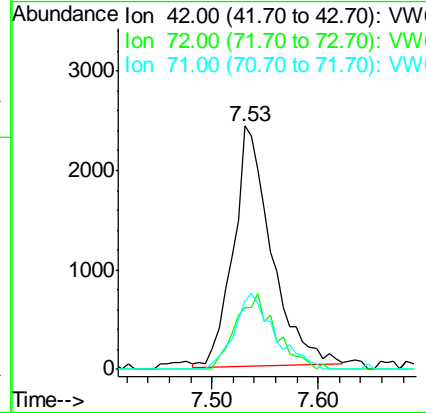
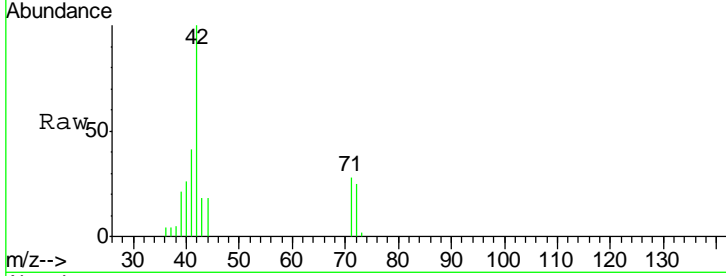




#29  
 Tetrahydrofuran  
 Concen: 10.289 ug/l  
 RT: 7.53 min Scan# 923  
 Delta R.T. -0.00 min  
 Lab File: VW012301.D  
 Acq: 29 Aug 2019 14:20

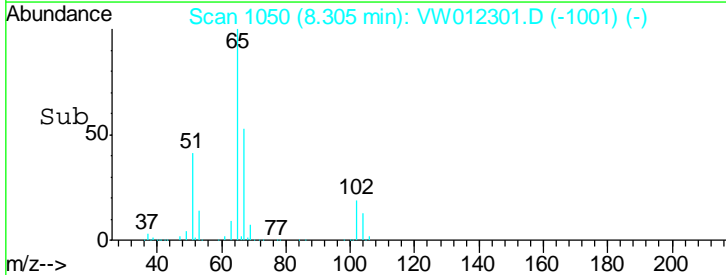
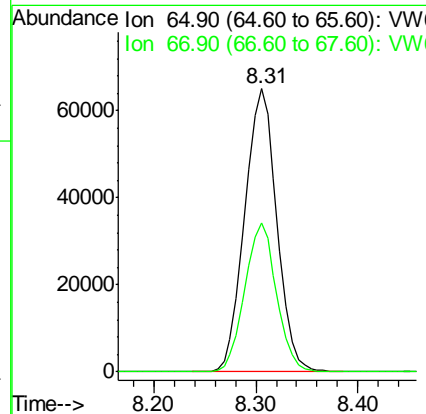
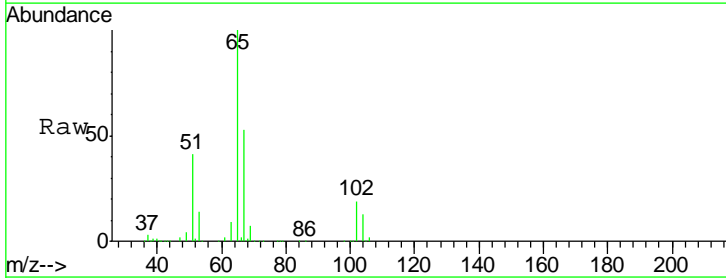
Instrument :  
 MSVOA\_W  
 ClientSampled :  
 S503-K2-9.5-10.0-082819

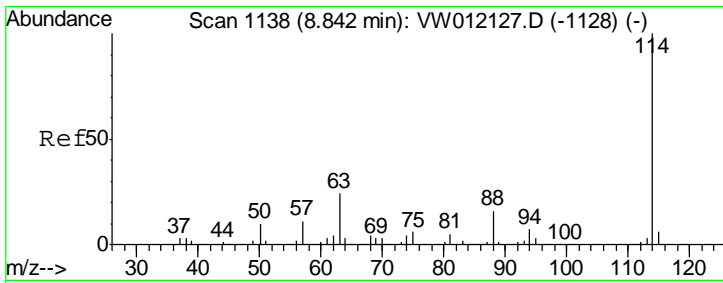
Tgt Ion	Resp	Lower	Upper
42	6040		
72	32.8	27.3	40.9
71	33.2	25.5	38.3



#33  
 1,2-Dichloroethane-d4  
 Concen: 50.538 ug/l  
 RT: 8.31 min Scan# 1050  
 Delta R.T. -0.00 min  
 Lab File: VW012301.D  
 Acq: 29 Aug 2019 14:20

Tgt Ion	Resp	Lower	Upper
65	142366		
67	51.7	0.0	102.6

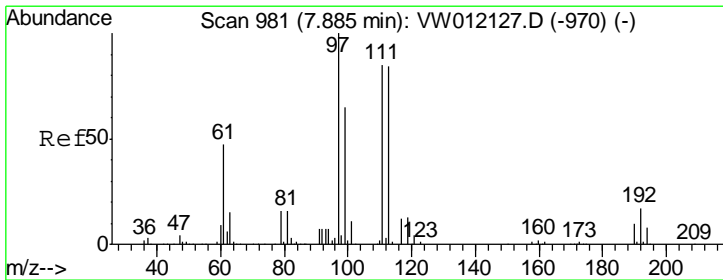
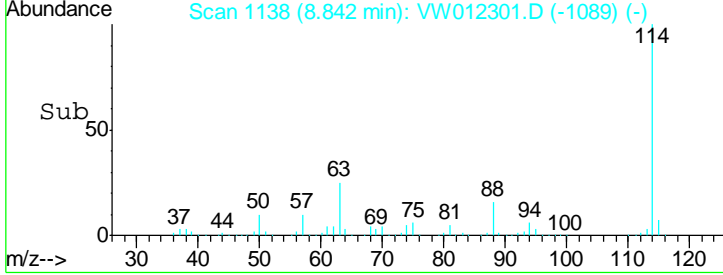
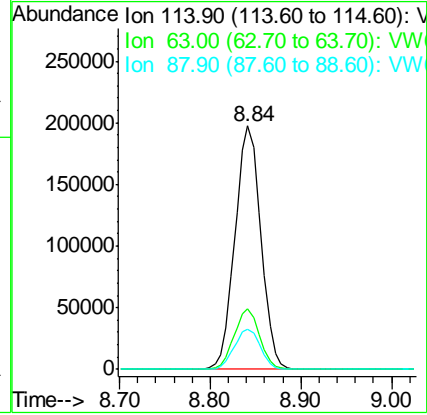
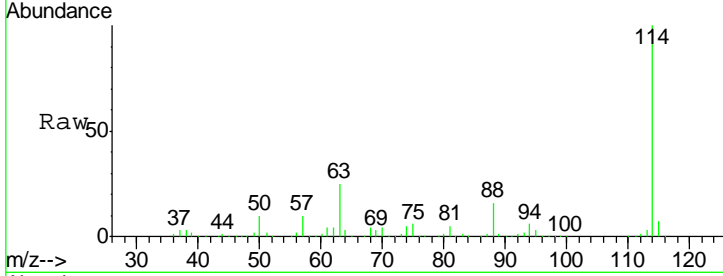




#34  
 1,4-Difluorobenzene  
 Concen: 50.000 ug/l  
 RT: 8.84 min Scan# 1138  
 Delta R.T. -0.00 min  
 Lab File: VW012301.D  
 Acq: 29 Aug 2019 14:20

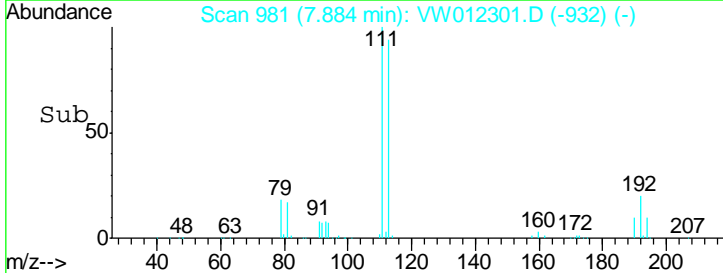
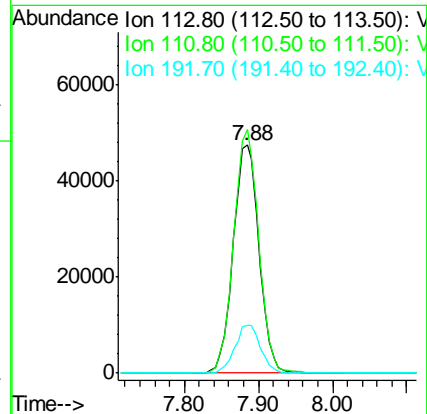
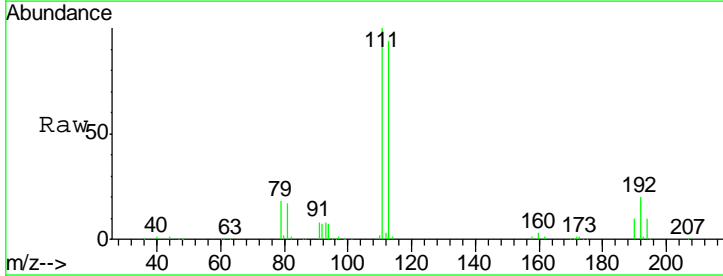
Instrument :  
 MSVOA\_W  
 ClientSampleID :  
 S503-K2-9.5-10.0-082819

Tgt Ion	Resp	Lower	Upper
114	390718		
63	24.9	0.0	48.6
88	16.5	0.0	32.2

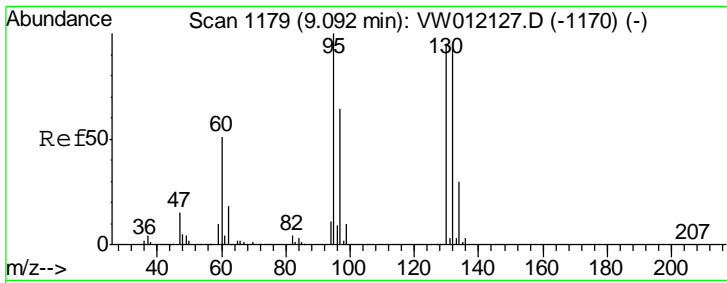


#35  
 Dibromofluoromethane  
 Concen: 49.453 ug/l  
 RT: 7.88 min Scan# 981  
 Delta R.T. -0.00 min  
 Lab File: VW012301.D  
 Acq: 29 Aug 2019 14:20

Tgt Ion	Resp	Lower	Upper
113	115334		
111	103.4	82.7	124.1
192	20.7	16.2	24.2



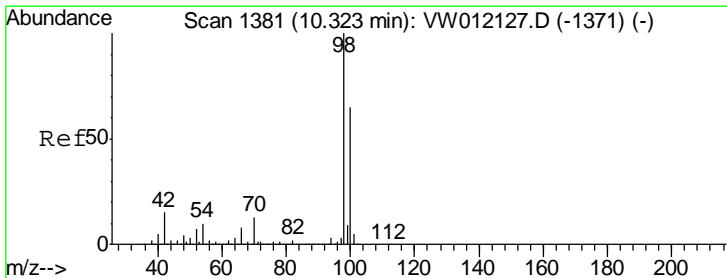
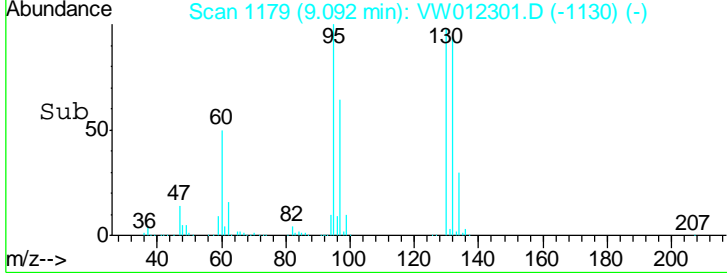
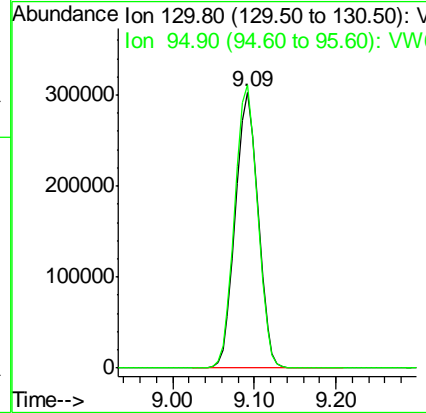
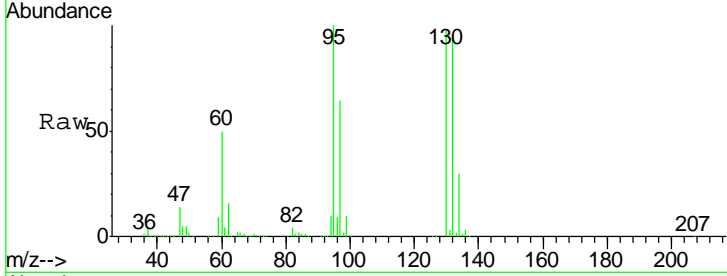




#44  
 Trichloroethene  
 Concen: 216.533 ug/l  
 RT: 9.09 min Scan# 1179  
 Delta R.T. -0.00 min  
 Lab File: VW012301.D  
 Acq: 29 Aug 2019 14:20

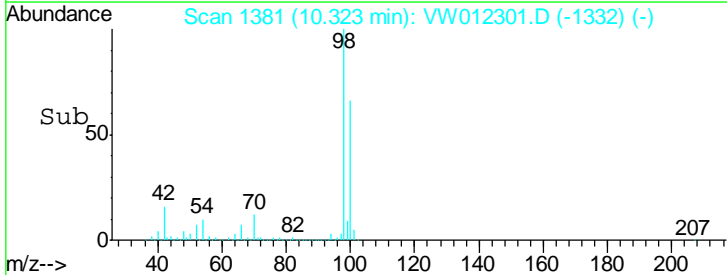
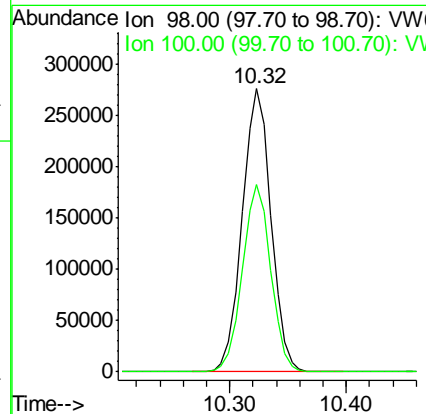
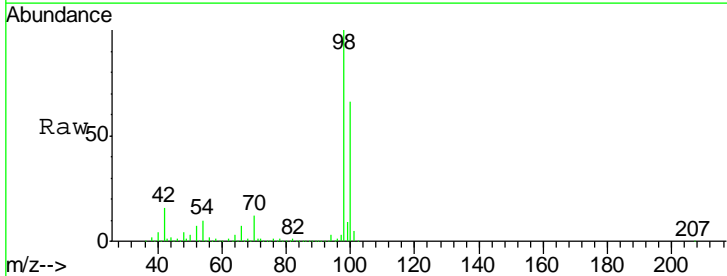
**Instrument :**  
 MSVOA\_W  
**ClientSampled :**  
 S503-K2-9.5-10.0-082819

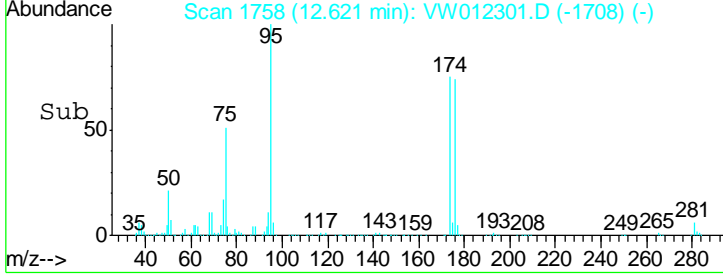
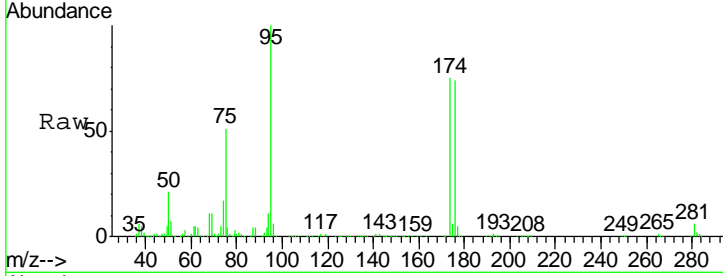
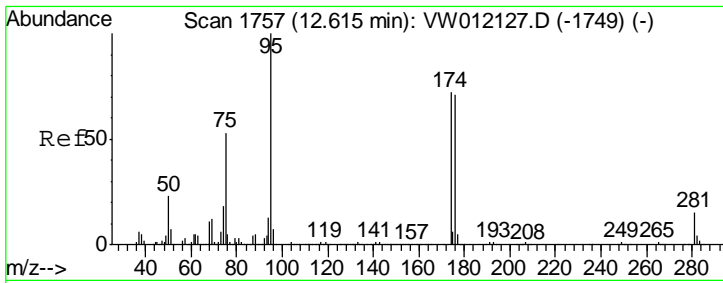
Tgt Ion:130 Resp: 580337  
 Ion Ratio Lower Upper  
 130 100  
 95 102.4 0.0 210.6



#50  
 Toluene-d8  
 Concen: 50.176 ug/l  
 RT: 10.32 min Scan# 1381  
 Delta R.T. -0.00 min  
 Lab File: VW012301.D  
 Acq: 29 Aug 2019 14:20

Tgt Ion: 98 Resp: 474483  
 Ion Ratio Lower Upper  
 98 100  
 100 65.3 52.4 78.6

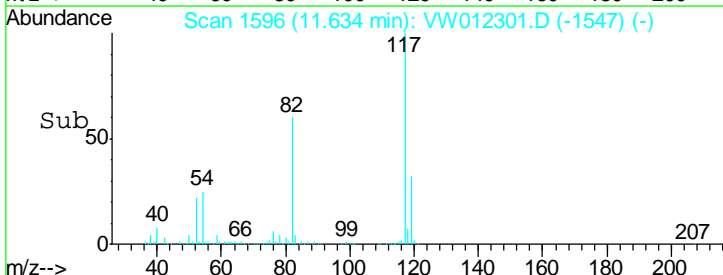
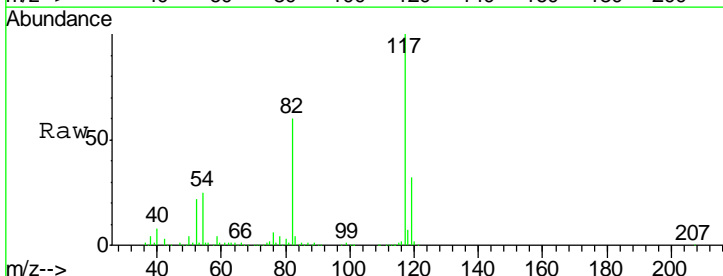
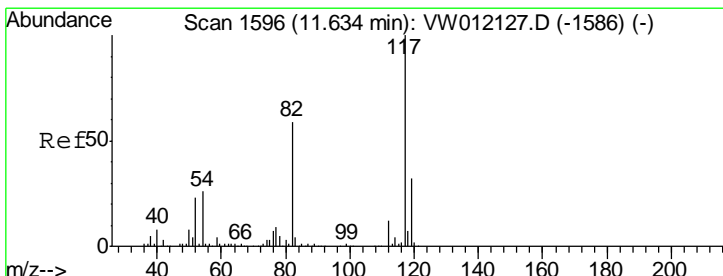
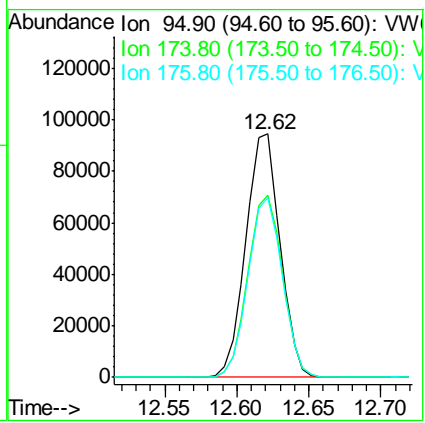




#62  
 4-Bromofluorobenzene  
 Concen: 46.570 ug/l  
 RT: 12.62 min Scan# 1758  
 Delta R.T. 0.01 min  
 Lab File: VW012301.D  
 Acq: 29 Aug 2019 14:20

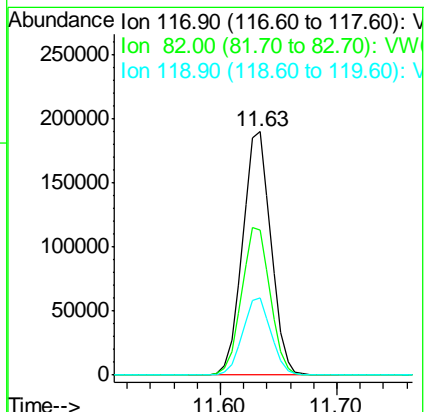
Instrument : MSVOA\_W  
 ClientSampled : S503-K2-9.5-10.0-082819

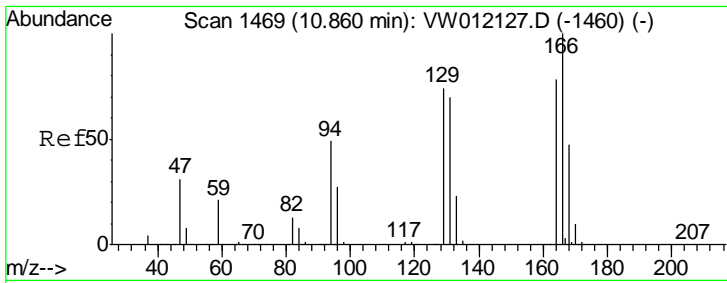
Tgt Ion	Resp	Lower	Upper
95	155237		
174	76.0	0.0	150.8
176	74.1	0.0	148.6



#63  
 Chlorobenzene-d5  
 Concen: 50.000 ug/l  
 RT: 11.63 min Scan# 1596  
 Delta R.T. -0.00 min  
 Lab File: VW012301.D  
 Acq: 29 Aug 2019 14:20

Tgt Ion	Resp	Lower	Upper
117	323398		
82	59.8	47.4	71.2
119	31.6	25.4	38.2

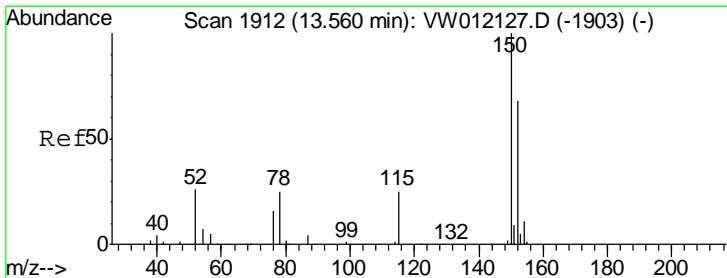
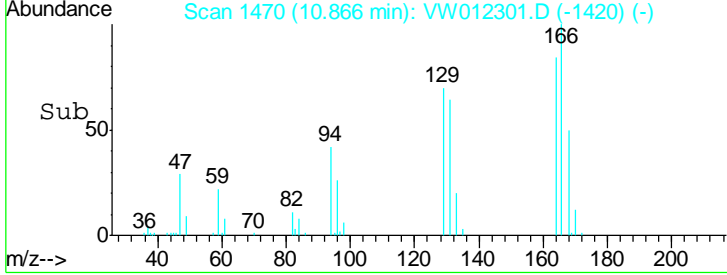
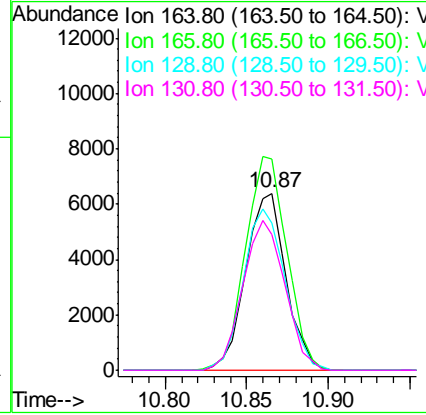
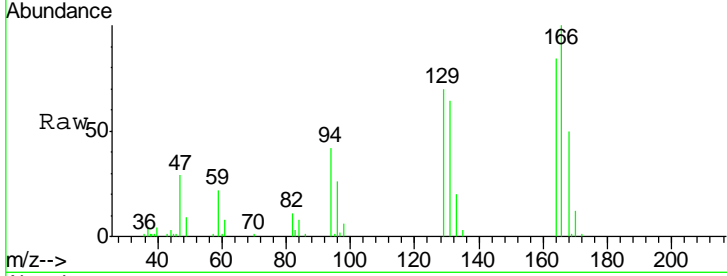




#64  
 Tetrachloroethene  
 Concen: 5.209 ug/l  
 RT: 10.87 min Scan# 1470  
 Delta R.T. 0.01 min  
 Lab File: VW012301.D  
 Acq: 29 Aug 2019 14:20

**Instrument :**  
 MSVOA\_W  
**ClientSampleId :**  
 S503-K2-9.5-10.0-082819

Tgt Ion	Resp	Lower	Upper
164	100		
166	119.2	102.4	153.6
129	82.9	75.8	113.6
131	76.5	71.4	107.2



#72  
 1,4-Dichlorobenzene-d4  
 Concen: 50.000 ug/l  
 RT: 13.56 min Scan# 1912  
 Delta R.T. -0.00 min  
 Lab File: VW012301.D  
 Acq: 29 Aug 2019 14:20

Tgt Ion	Resp	Lower	Upper
152	100		
115	60.3	30.1	90.3
150	158.0	0.0	345.8

