

Data Path : Z:\VOASRV\HPCHEM1\MSVOA W\DATA\VW082919\
 Data File : VW012325.D
 Acq On : 30 Aug 2019 01:58
 Operator : SY/VA
 Sample : K4568-09
 Misc : 5.10G/5ML/MSVOA W/SOIL
 ALS Vial : 38 Sample Multiplier: 1

Instrument :
 MSVOA_W
 ClientSampleId :
 SB-18-6.5-7.0

Integration Parameters: RTEINT.P
 Integrator: RTE
 Smoothing : ON Filtering: 5
 Sampling : 1 Min Area: 3 % of largest Peak
 Start Thrs: 0.2 Max Peaks: 100
 Stop Thrs : 0 Peak Location: TOP

If leading or trailing edge < 100 prefer < Baseline drop else tangent >
 Peak separation: 5

Method : Z:\VOASRV\HPCHEM1\MSVOA_W\METHOD\82W082319S.M
 Title : SW846 8260

Signal : TIC

peak #	R.T. min	first scan	max scan	last scan	PK TY	peak height	corr. area	corr. % max.	% of total
1	2.148	36	40	47	rBV	12129	22322	1.95%	0.442%
2	4.909	483	493	511	rVB3	16283	58972	5.14%	1.169%
3	5.940	653	662	670	rBV4	4525	13955	1.22%	0.277%
4	7.884	969	981	985	rBV	165894	387162	33.78%	7.673%
5	7.945	985	991	1003	rVB	313251	693392	60.49%	13.742%
6	8.305	1040	1050	1062	rBV	171818	389629	33.99%	7.722%
7	8.842	1128	1138	1150	rBV	455567	909224	79.32%	18.020%
8	9.335	1213	1219	1226	rVB3	6834	14175	1.24%	0.281%
9	10.323	1373	1381	1389	rBV	659746	1146287	100.00%	22.718%
10	10.701	1433	1443	1450	rBV	19876	40008	3.49%	0.793%
11	11.628	1587	1595	1607	rBV	413397	711964	62.11%	14.110%
12	12.615	1749	1757	1769	rBV	219825	372709	32.51%	7.387%
13	13.560	1905	1912	1920	rBV	168658	285865	24.94%	5.666%

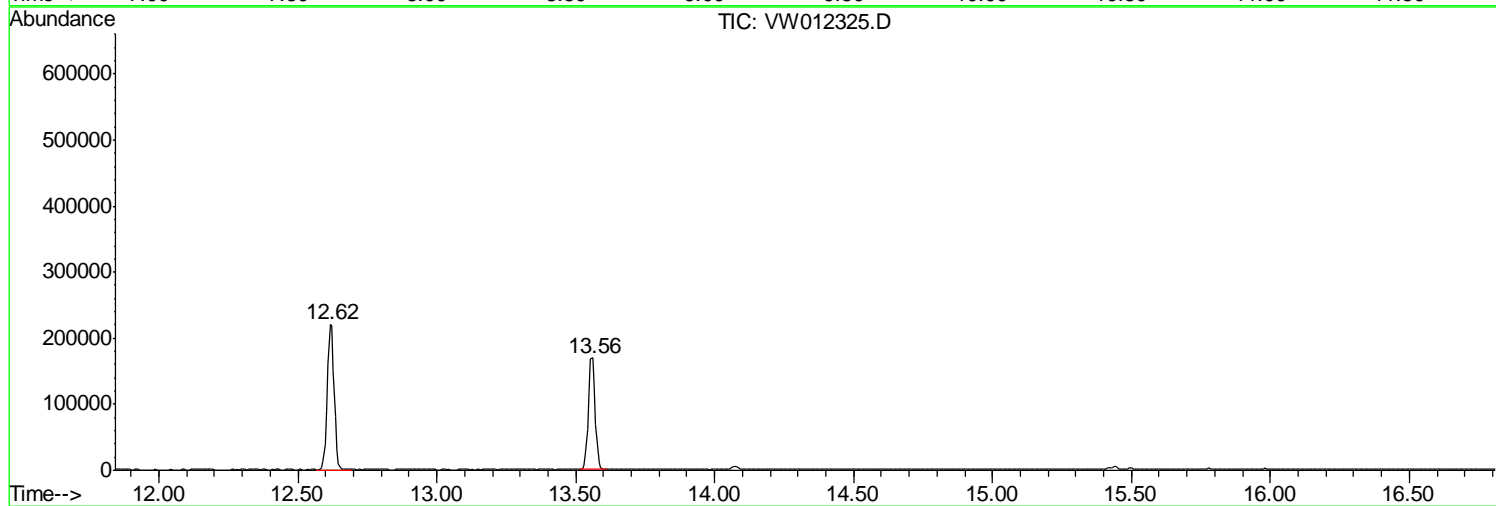
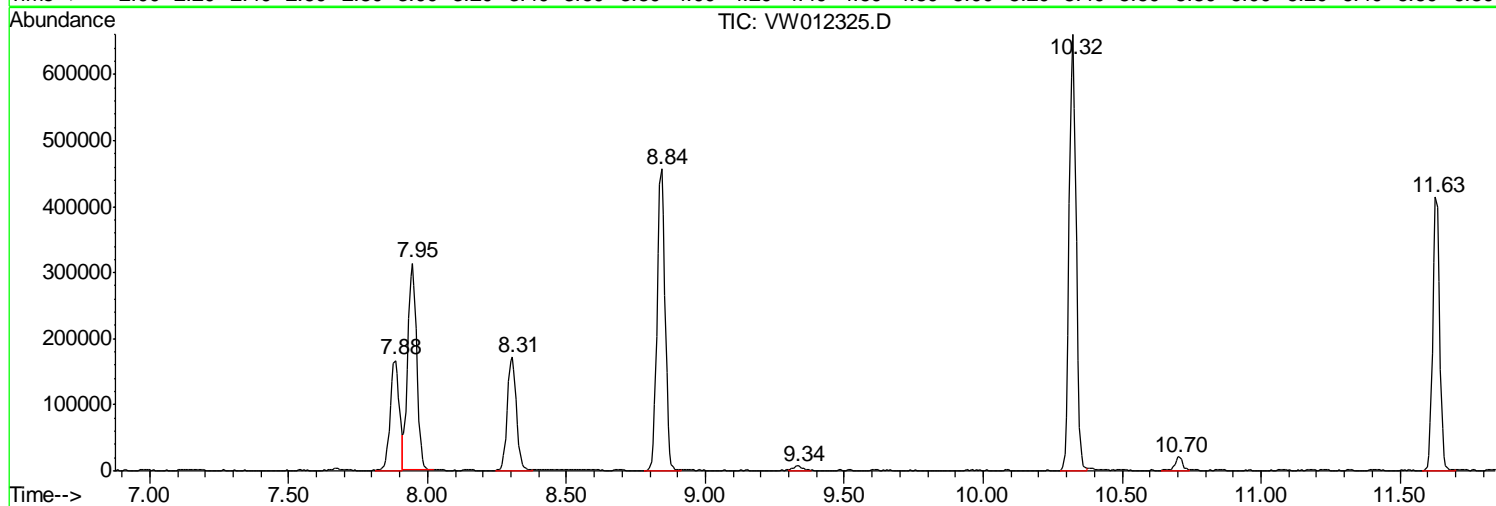
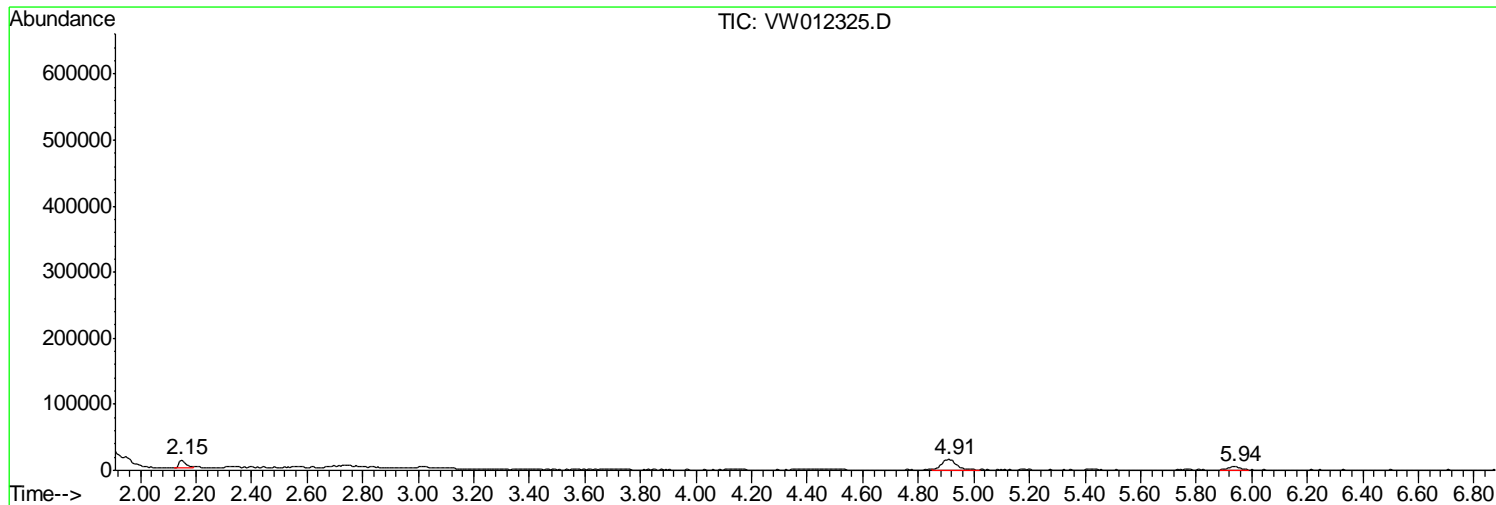
Sum of corrected areas: 5045664

Data Path : Z:\VOASRV\HPCHEM1\MSVOA W\DATA\VW082919\
Data File : VW012325.D
Acq On : 30 Aug 2019 01:58
Operator : SY/VA
Sample : K4568-09
Misc : 5.10G/5ML/MSVOA W/SOIL
ALS Vial : 38 Sample Multiplier: 1

Instrument :
MSVOA_W
ClientSampled :
SB-18-6.5-7.0

Quant Method : Z:\VOASRV\HPCHEM1\MSVOA_W\METHOD\82W082319S.M
Quant Title : SW846 8260

TIC Library : C:\DATABASE\NIST11.L
TIC Integration Parameters: LSCINT.P



Data Path : Z:\VOASRV\HPCHEM1\MSVOA_W\DATA\VW082919\
Data File : VW012325.D
Acq On : 30 Aug 2019 01:58
Operator : SY/VA
Sample : K4568-09
Misc : 5.10G/5ML/MSVOA_W/SOIL
ALS Vial : 38 Sample Multiplier: 1

Instrument :
MSVOA_W
ClientSampleId :
SB-18-6.5-7.0

Quant Method : Z:\VOASRV\HPCHEM1\MSVOA_W\METHOD\82W082319S.M
Quant Title : SW846 8260

TIC Library : C:\DATABASE\NIST11.L
TIC Integration Parameters: LSCINT.P

No Library Search Compounds Detected

Data Path : Z:\VOASRV\HPCHEM1\MSVOA_W\DATA\VW082919\
Data File : VW012325.D
Acq On : 30 Aug 2019 01:58
Operator : SY/VA
Sample : K4568-09
Misc : 5.10G/5ML/MSVOA_W/SOIL
ALS Vial : 38 Sample Multiplier: 1

Instrument :
MSVOA_W
ClientSampleId :
SB-18-6.5-7.0

Quant Method : Z:\VOASRV\HPCHEM1\MSVOA_W\METHOD\82W082319S.M
Quant Title : SW846 8260

TIC Library : C:\DATABASE\NIST11.L
TIC Integration Parameters: LSCINT.P

TIC Top Hit name	RT	EstConc	Units	Response	--Internal Standard--			
					#	RT	Resp	Conc
