

Data Path : Z:\VOASRV\HPCHEM1\MSVOA W\DATA\VW083018\
 Data File : VW005016.D
 Acq On : 30 Aug 2018 14:17
 Operator : SY/AP
 Sample : J4277-11RE
 Misc : 5.84G/5ML/MSVOA W/SOIL
 ALS Vial : 8 Sample Multiplier: 1

Instrument :
 MSVOA_W
 ClientSampled :

Quant Time: Aug 30 14:42:17 2018
 Quant Method : Z:\VOASRV\HPCHEM1\MSVOA_W\METHOD\82W082918S.M
 Quant Title : SW846 8260
 QLast Update : Thu Aug 30 01:51:13 2018
 Response via : Initial Calibration

Internal Standards	R.T.	QIon	Response	Conc	Units	Dev(Min)
1) Pentafluorobenzene	7.96	168	399499	50.00	ug/l	0.00
34) 1,4-Difluorobenzene	8.85	114	649935	50.00	ug/l	0.00
63) Chlorobenzene-d5	11.64	117	595199	50.00	ug/l	0.00
72) 1,4-Dichlorobenzene-d4	13.57	152	283748	50.00	ug/l	0.00

System Monitoring Compounds

33) 1,2-Dichloroethane-d4	8.31	65	189592	69.38	ug/l	0.00
Spiked Amount	50.000		Recovery	= 138.76%		
35) Dibromofluoromethane	7.89	113	176804	54.90	ug/l	0.00
Spiked Amount	50.000		Recovery	= 109.80%		
50) Toluene-d8	10.33	98	618457	34.98	ug/l	0.00
Spiked Amount	50.000		Recovery	= 69.96%		
62) 4-Bromofluorobenzene	12.62	95	280808	43.56	ug/l	0.00
Spiked Amount	50.000		Recovery	= 87.12%		

Target Compounds

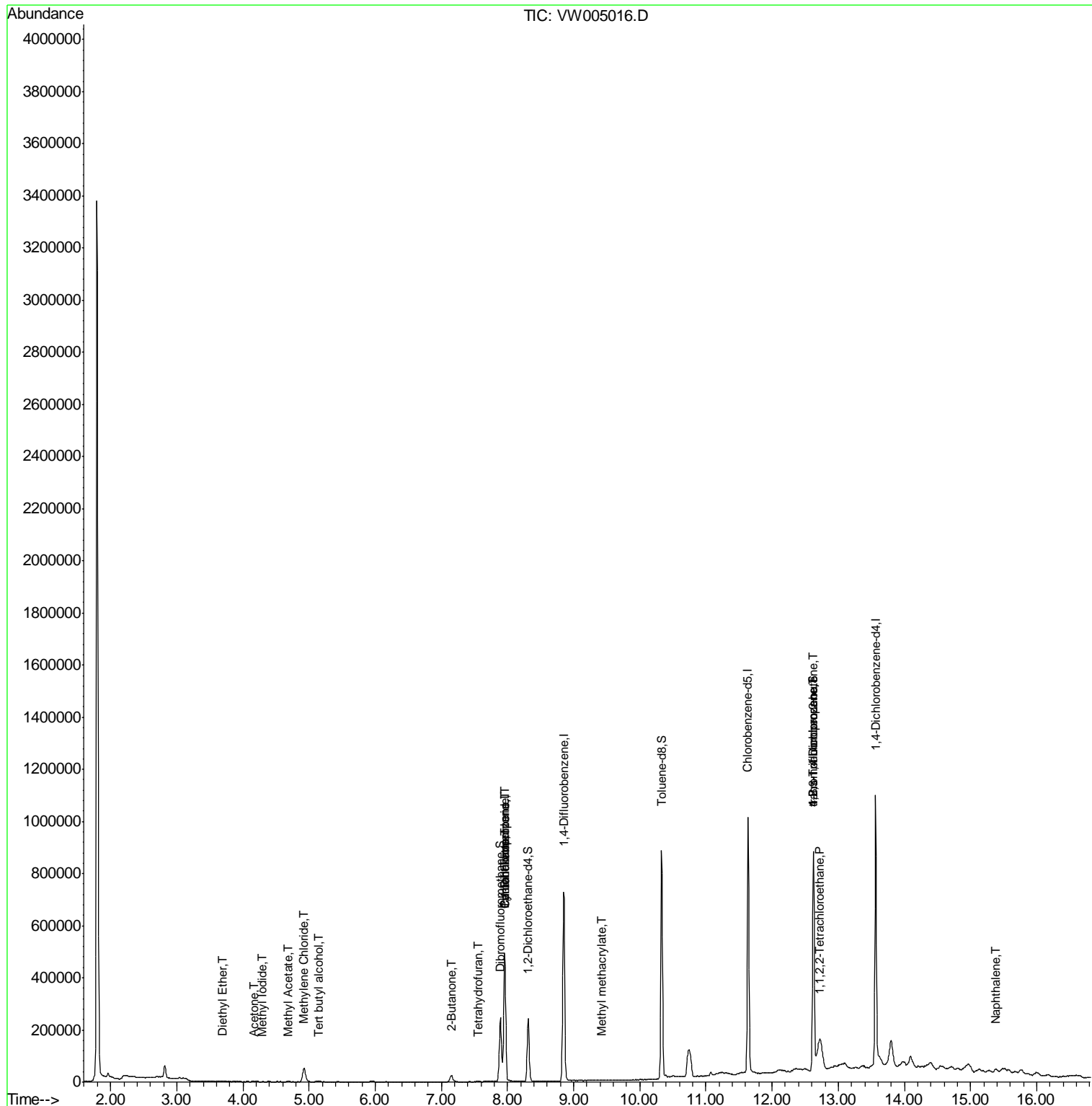
	R.T.	QIon	Response	Conc	Units	Qvalue
8) Diethyl Ether	3.70	74	1487	1.034	ug/l	65
10) Methyl Iodide	4.29	142	669	2.803	ug/l #	44
11) Tert butyl alcohol	5.14	59	1714	8.656	ug/l #	73
16) Acetone	4.16	43	1446	2.346	ug/l	94
18) Methyl Acetate	4.68	43	1638	1.097	ug/l	92
20) Methylene Chloride	4.92	84	42845	5.763	ug/l	96
25) 2-Butanone	7.15	43	1656	1.723	ug/l #	73
29) Tetrahydrofuran	7.56	42	1175	2.420	ug/l #	91
31) Cyclohexane	7.95	56	6919	1.177	ug/l #	1
36) 1,1-Dichloropropene	7.96	75	28014	5.087	ug/l #	49
38) Carbon Tetrachloride	7.96	117	36007	6.756	ug/l #	17
48) Methyl methacrylate	9.41	41	259	2.788	ug/l #	79
75) 1,1,2,2-Tetrachloroethane	12.71	83	38258	13.359	ug/l #	26
76) 1,2,3-Trichloropropane	12.62	75	127553	63.470	ug/l #	100
81) trans-1,4-Dichloro-2-buten	12.62	75	127553	143.444	ug/l #	16
95) Naphthalene	15.38	128	3815	4.567	ug/l #	92

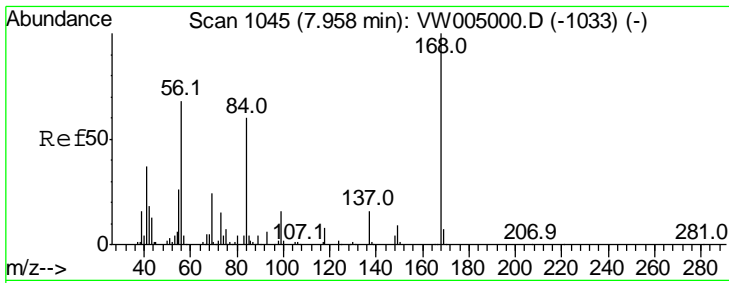
(#) = qualifier out of range (m) = manual integration (+) = signals summed

Data Path : Z:\VOASRV\HPCHEM1\MSVOA W\DATA\VW083018\
 Data File : VW005016.D
 Acq On : 30 Aug 2018 14:17
 Operator : SY/AP
 Sample : J4277-11RE
 Misc : 5.84G/5ML/MSVOA W/SOIL
 ALS Vial : 8 Sample Multiplier: 1

Instrument :
 MSVOA_W
 ClientSampleId :

Quant Time: Aug 30 14:42:17 2018
 Quant Method : Z:\VOASRV\HPCHEM1\MSVOA_W\METHOD\82W082918S.M
 Quant Title : SW846 8260
 QLast Update : Thu Aug 30 01:51:13 2018
 Response via : Initial Calibration

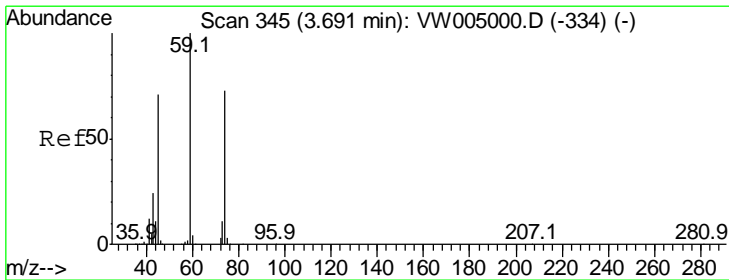
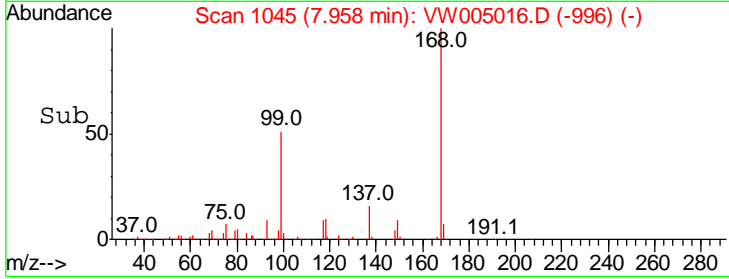
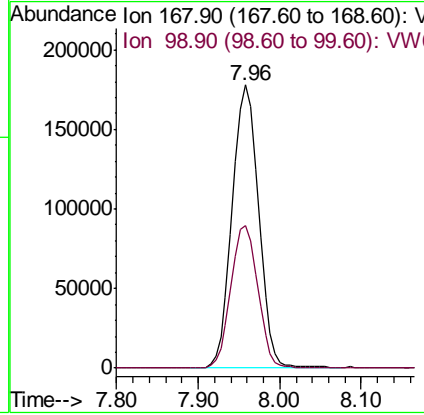
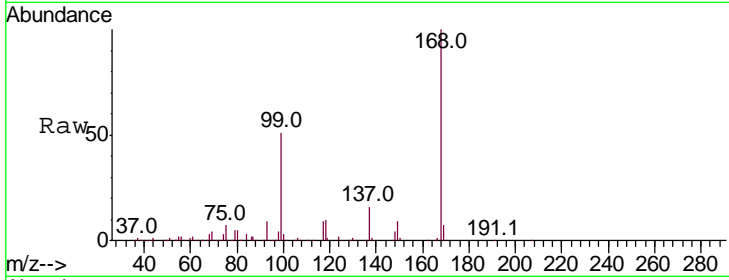




#1
 Pentafluorobenzene
 Concen: 50.000 ug/l
 RT: 7.96 min Scan# 1045
 Delta R.T. -0.00 min
 Lab File: VW005016.D
 Acq: 30 Aug 2018 14:17

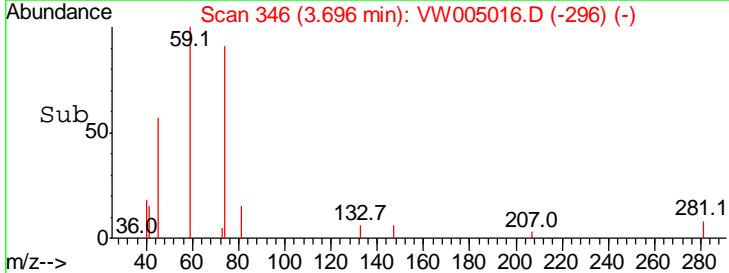
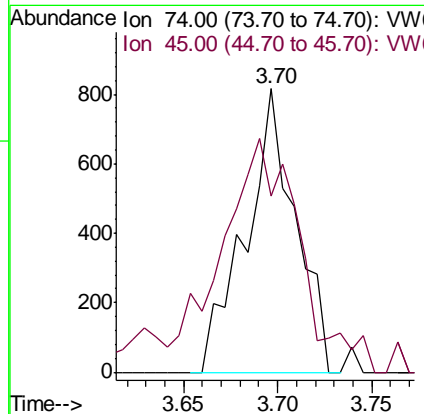
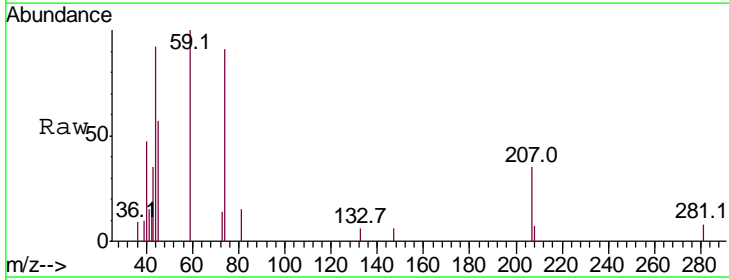
Instrument :
 MSVOA_W
 ClientSampled :

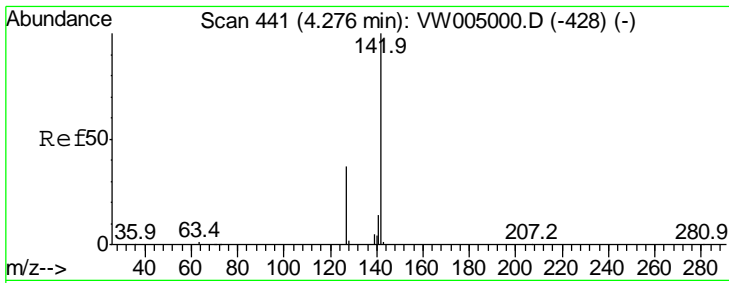
Tgt Ion	Resp	Lower	Upper
168	100		
99	50.6	40.2	60.2



#8
 Diethyl Ether
 Concen: 1.034 ug/l
 RT: 3.70 min Scan# 346
 Delta R.T. 0.01 min
 Lab File: VW005016.D
 Acq: 30 Aug 2018 14:17

Tgt Ion	Resp	Lower	Upper
74	100		
45	129.7	47.8	143.3

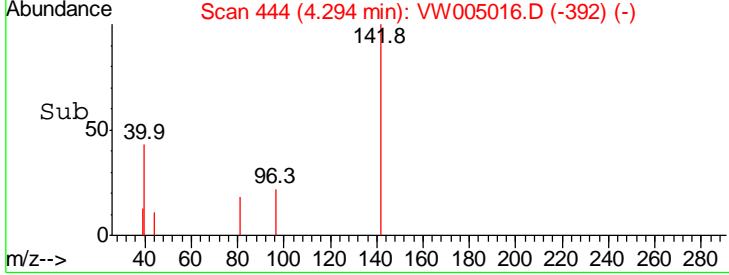
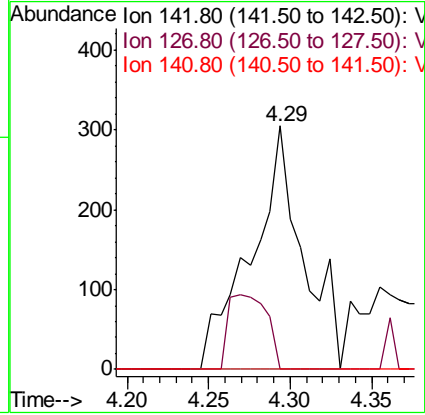
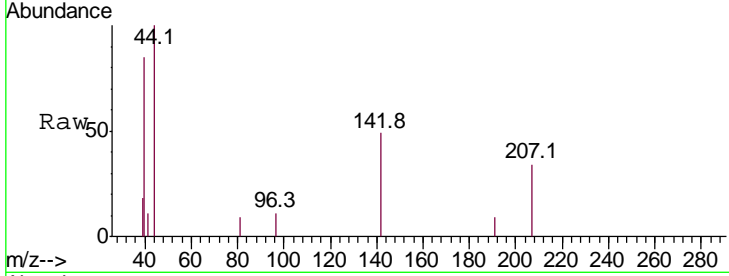




#10
Methyl Iodide
Concen: 2.803 ug/l
RT: 4.29 min Scan# 444
Delta R.T. 0.02 min
Lab File: VW005016.D
Acq: 30 Aug 2018 14:17

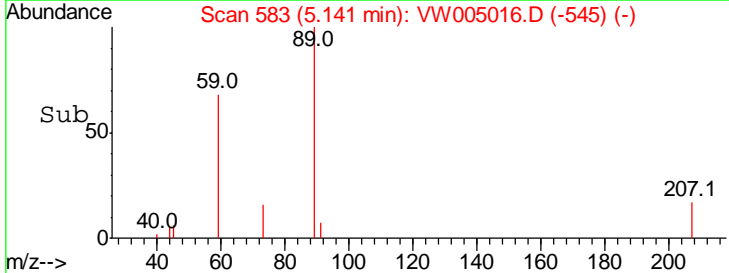
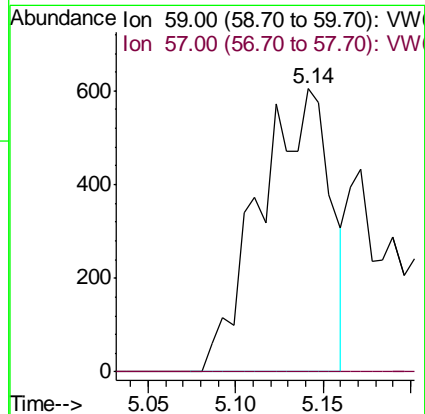
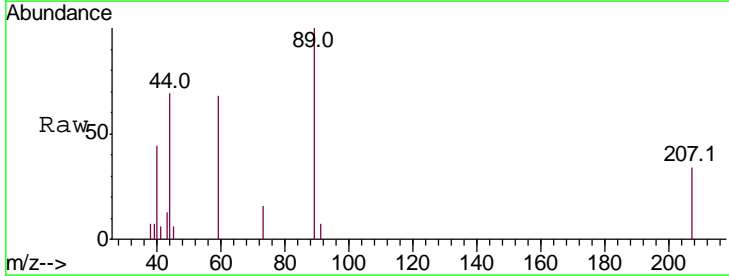
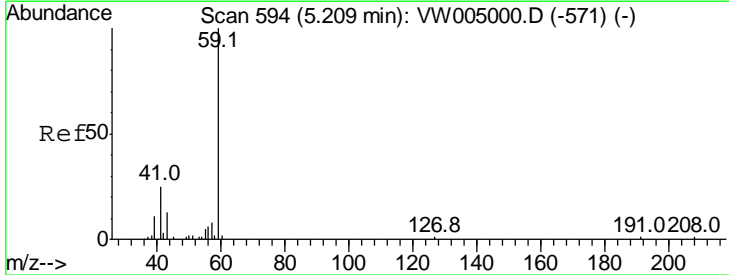
Instrument :
MSVOA_W
ClientSampled :

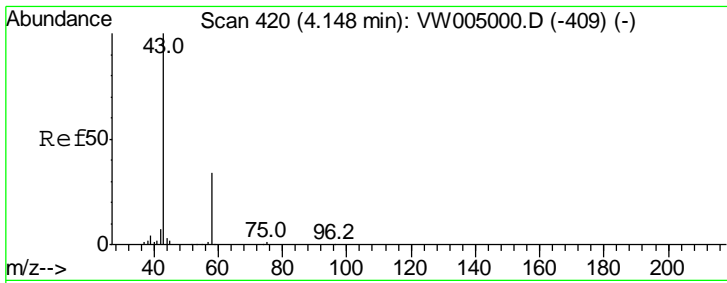
Tgt Ion	Ratio	Lower	Upper
142	100		
127	0.0	31.1	46.7#
141	0.0	11.4	17.2#



#11
Tert butyl alcohol
Concen: 8.656 ug/l
RT: 5.14 min Scan# 583
Delta R.T. -0.07 min
Lab File: VW005016.D
Acq: 30 Aug 2018 14:17

Tgt Ion	Ratio	Lower	Upper
59	100		
57	0.0	8.1	12.1#

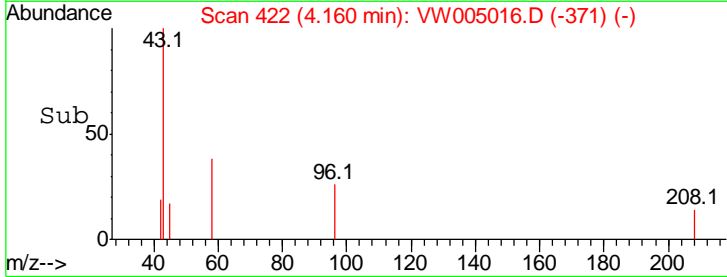
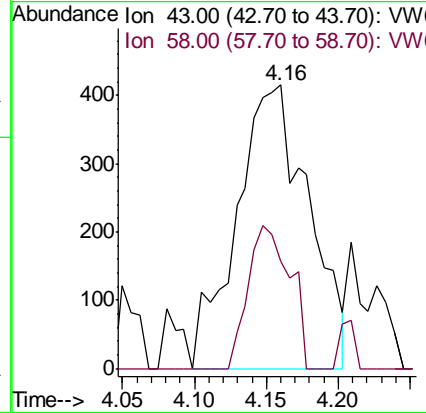
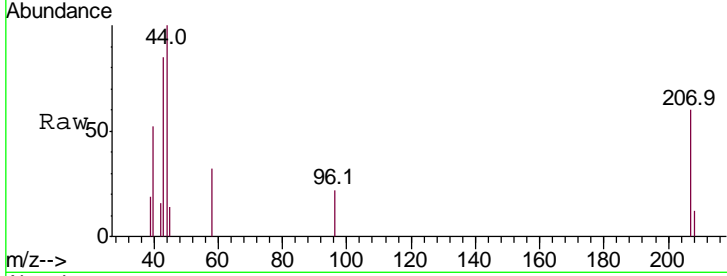




#16
 Acetone
 Concen: 2.346 ug/l
 RT: 4.16 min Scan# 422
 Delta R.T. 0.01 min
 Lab File: VW005016.D
 Acq: 30 Aug 2018 14:17

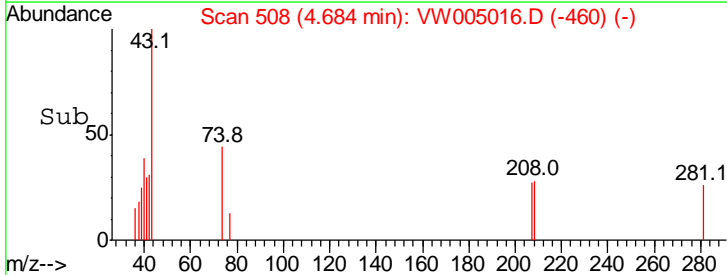
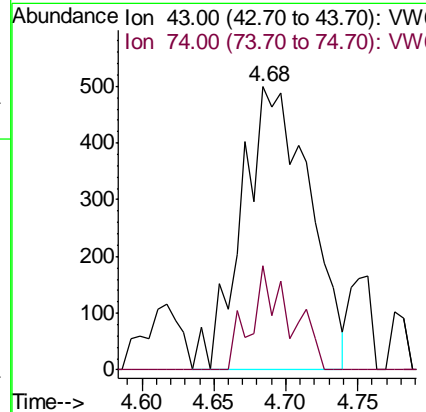
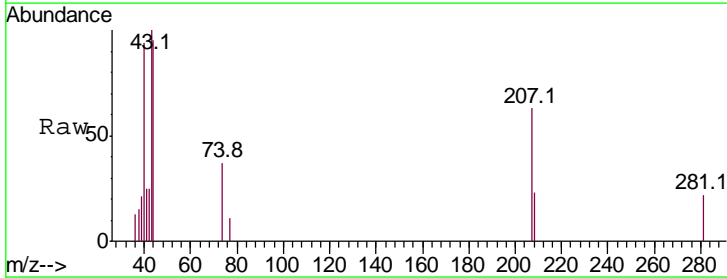
Instrument :
 MSVOA_W
 ClientSampled :

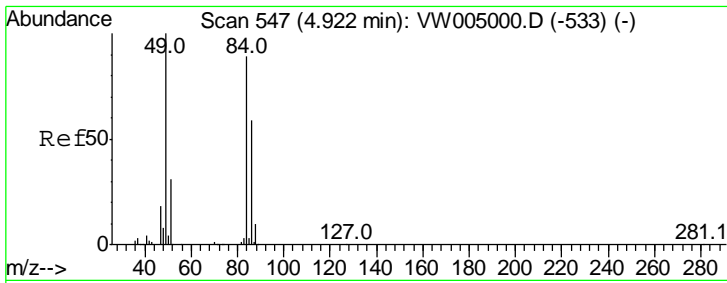
Tgt Ion	43	58	Resp	1446	Lower	Upper
Ion Ratio	100	37.6			27.2	40.8



#18
 Methyl Acetate
 Concen: 1.097 ug/l
 RT: 4.68 min Scan# 508
 Delta R.T. -0.01 min
 Lab File: VW005016.D
 Acq: 30 Aug 2018 14:17

Tgt Ion	43	74	Resp	1638	Lower	Upper
Ion Ratio	100	21.5			20.3	30.5

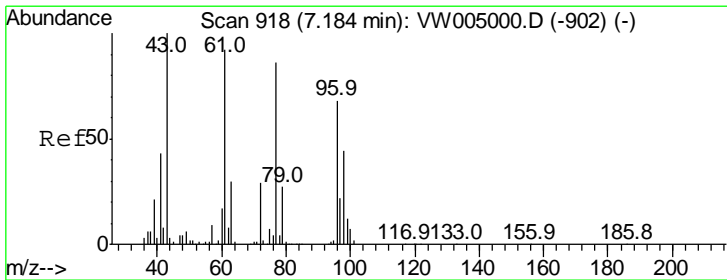
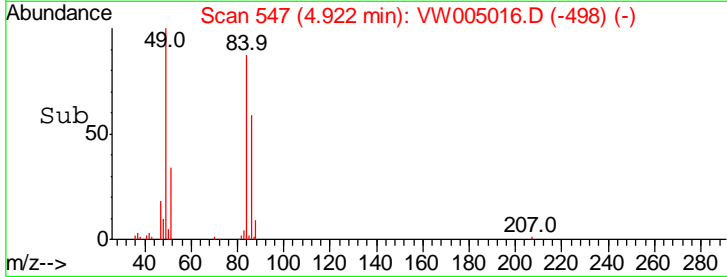
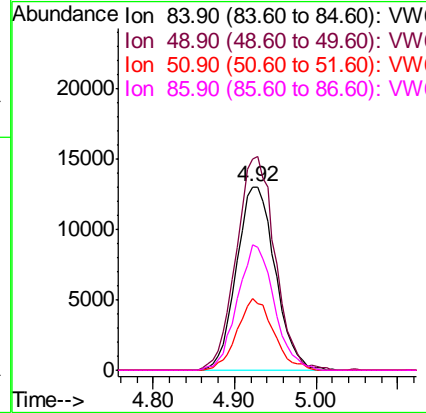
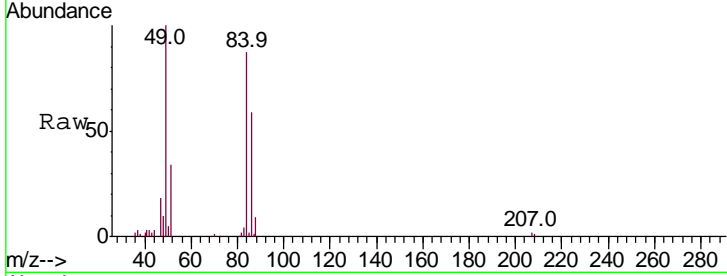




#20
 Methylene Chloride
 Concen: 5.763 ug/l
 RT: 4.92 min Scan# 547
 Delta R.T. -0.00 min
 Lab File: VW005016.D
 Acq: 30 Aug 2018 14:17

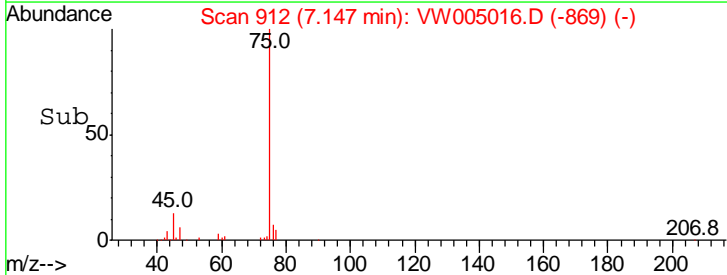
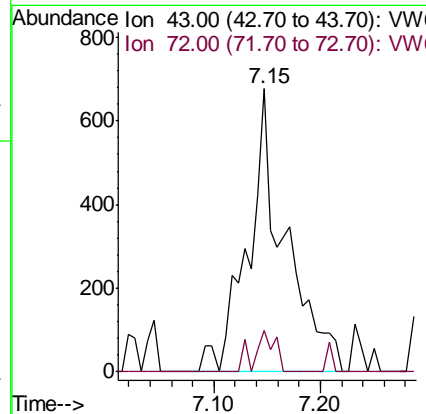
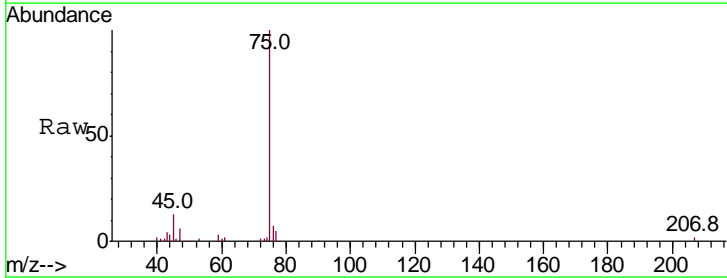
Instrument :
 MSVOA_W
 ClientSampled :

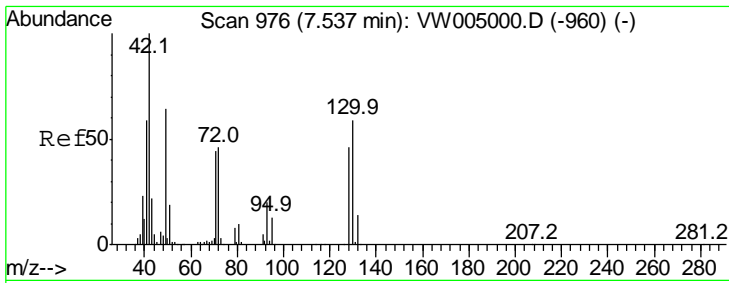
Tgt Ion	Resp	Lower	Upper
84	100		
49	115.3	89.7	134.5
51	39.3	27.5	41.3
86	68.4	52.7	79.1



#25
 2-Butanone
 Concen: 1.723 ug/l
 RT: 7.15 min Scan# 912
 Delta R.T. -0.04 min
 Lab File: VW005016.D
 Acq: 30 Aug 2018 14:17

Tgt Ion	Resp	Lower	Upper
43	100		
72	14.6	23.4	35.2#

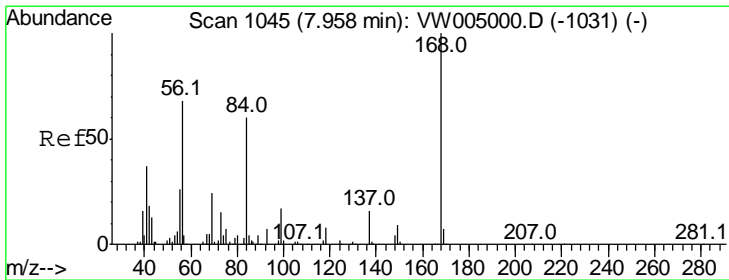
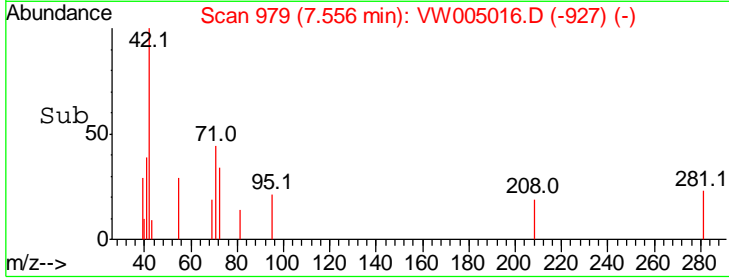
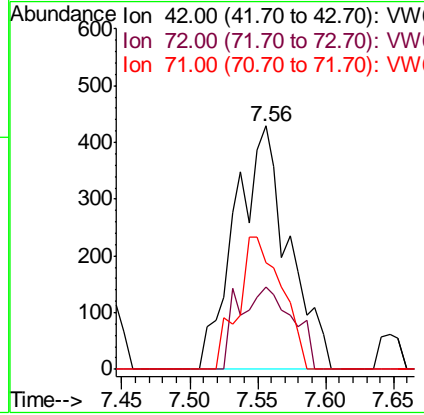
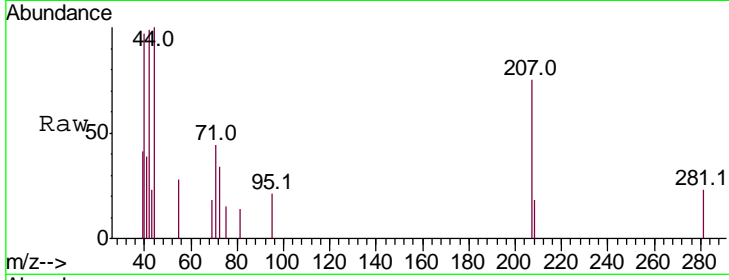




#29
 Tetrahydrofuran
 Concen: 2.420 ug/l
 RT: 7.56 min Scan# 979
 Delta R.T. 0.02 min
 Lab File: VW005016.D
 Acq: 30 Aug 2018 14:17

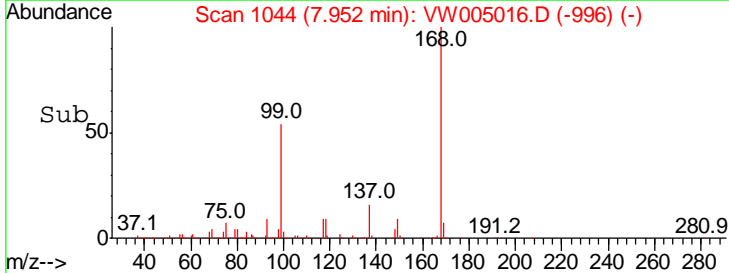
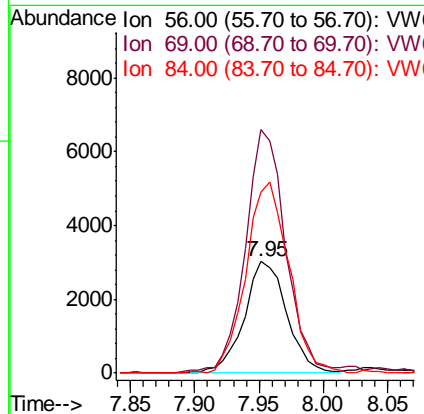
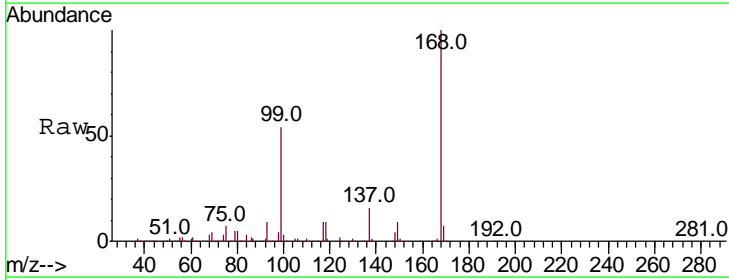
Instrument :
 MSVOA_W
 ClientSampled :

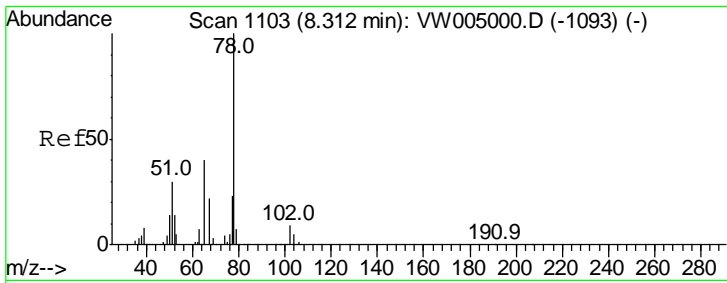
Tgt Ion	Ratio	Lower	Upper
42	100		
72	34.5	36.6	55.0#
71	44.5	35.4	53.2



#31
 Cyclohexane
 Concen: 1.177 ug/l
 RT: 7.95 min Scan# 1044
 Delta R.T. -0.01 min
 Lab File: VW005016.D
 Acq: 30 Aug 2018 14:17

Tgt Ion	Ratio	Lower	Upper
56	100		
69	215.0	27.9	41.9#
84	159.7	70.5	105.7#

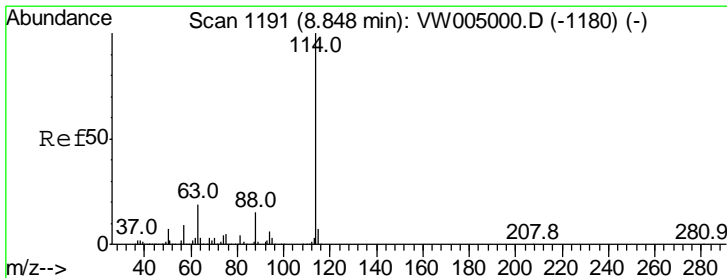
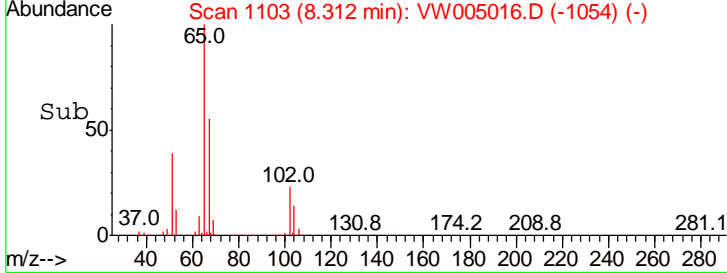
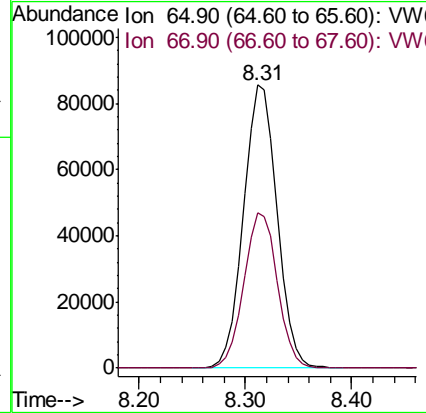
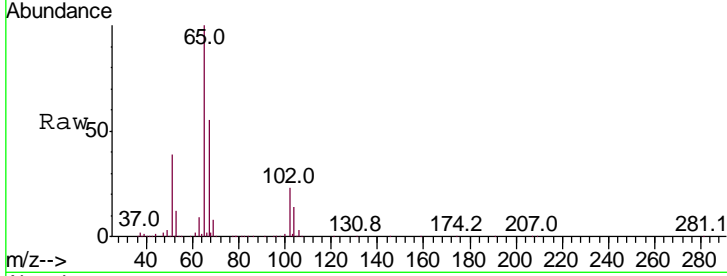




#33
 1,2-Dichloroethane-d4
 Concen: 69.378 ug/l
 RT: 8.31 min Scan# 1103
 Delta R.T. -0.00 min
 Lab File: VW005016.D
 Acq: 30 Aug 2018 14:17

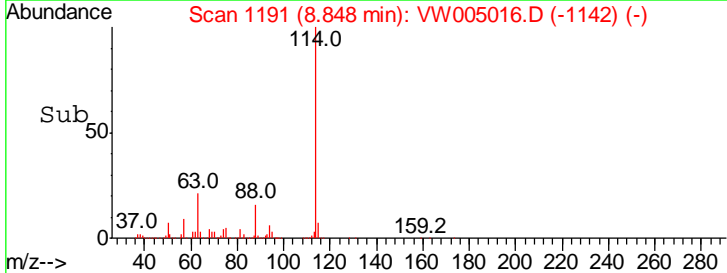
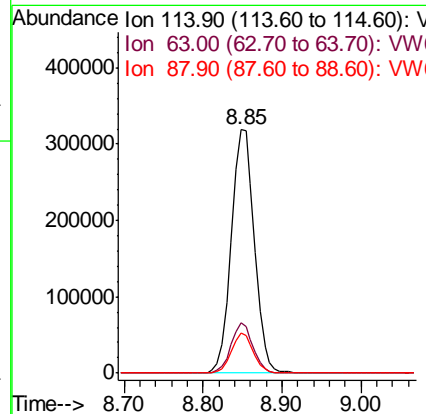
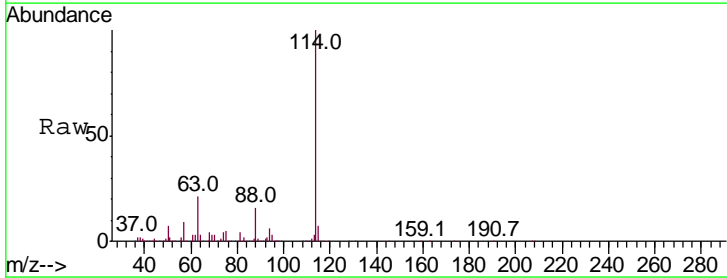
Instrument :
 MSVOA_W
 ClientSampled :

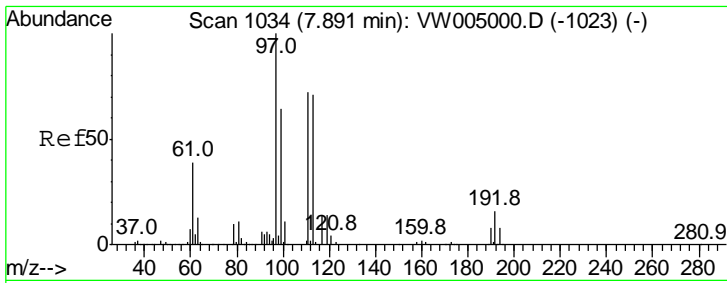
Tgt Ion	Resp	Lower	Upper
65	100		
67	55.1	0.0	112.8



#34
 1,4-Difluorobenzene
 Concen: 50.000 ug/l
 RT: 8.85 min Scan# 1191
 Delta R.T. -0.00 min
 Lab File: VW005016.D
 Acq: 30 Aug 2018 14:17

Tgt Ion	Resp	Lower	Upper
114	100		
63	20.8	0.0	38.4
88	16.5	0.0	30.6

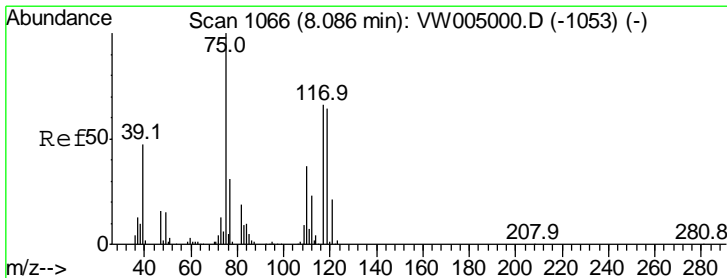
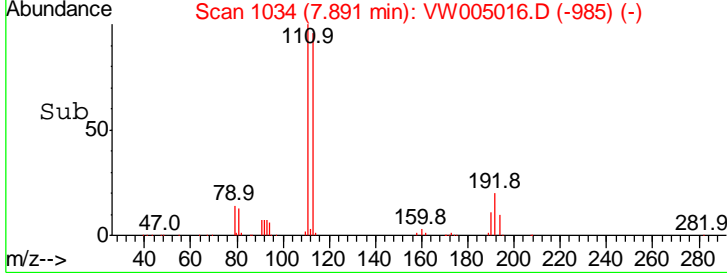
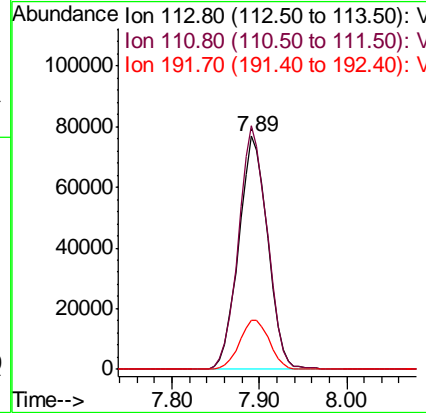
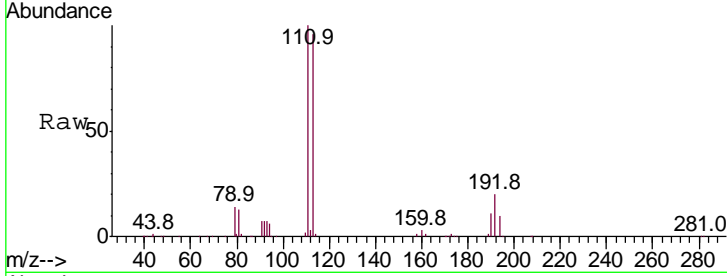




#35
 Dibromofluoromethane
 Concen: 54.896 ug/l
 RT: 7.89 min Scan# 1034
 Delta R.T. -0.00 min
 Lab File: VW005016.D
 Acq: 30 Aug 2018 14:17

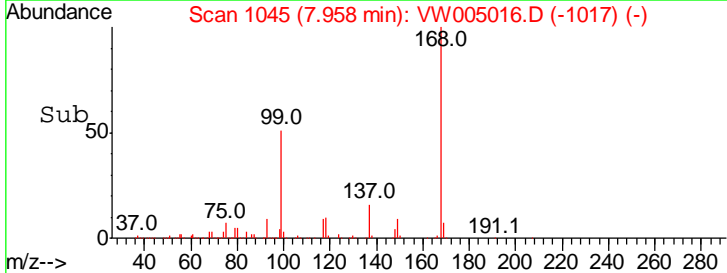
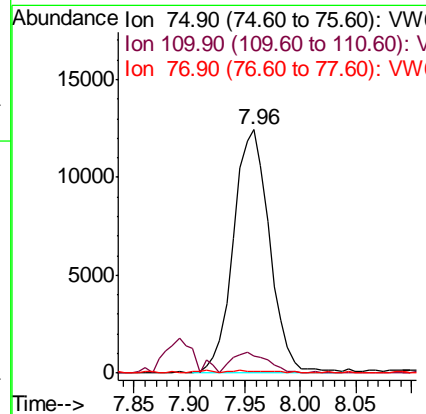
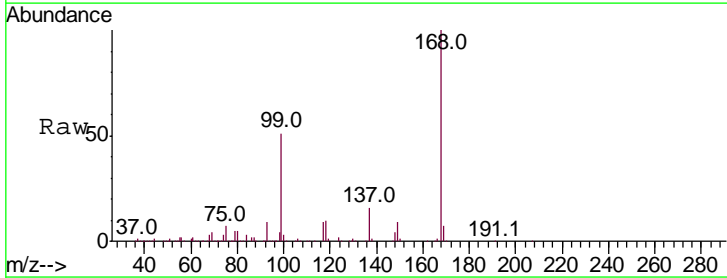
Instrument :
 MSVOA_W
 ClientSampled :

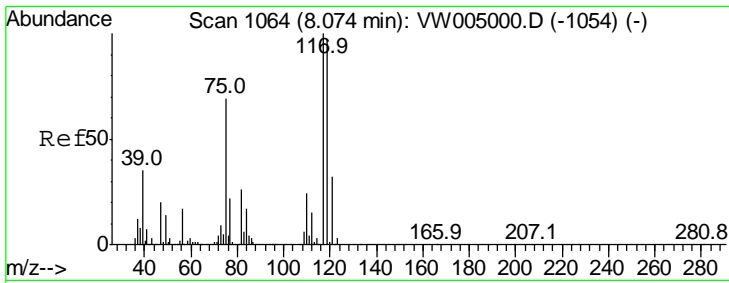
Tgt Ion	Resp	Lower	Upper
113	100		
111	103.7	81.3	121.9
192	21.8	17.8	26.8



#36
 1,1-Dichloropropene
 Concen: 5.087 ug/l
 RT: 7.96 min Scan# 1045
 Delta R.T. -0.13 min
 Lab File: VW005016.D
 Acq: 30 Aug 2018 14:17

Tgt Ion	Resp	Lower	Upper
75	100		
110	8.4	18.7	56.1#
77	1.1	24.9	37.3#

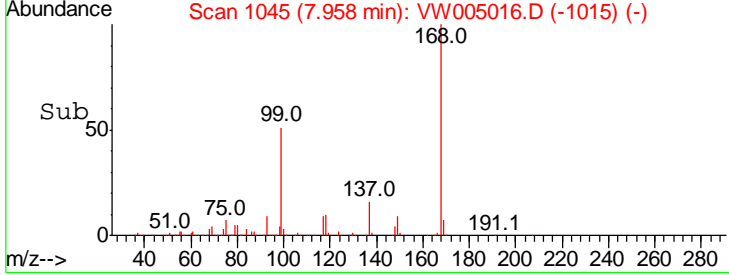
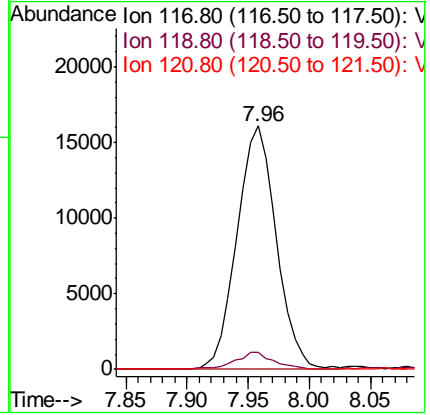
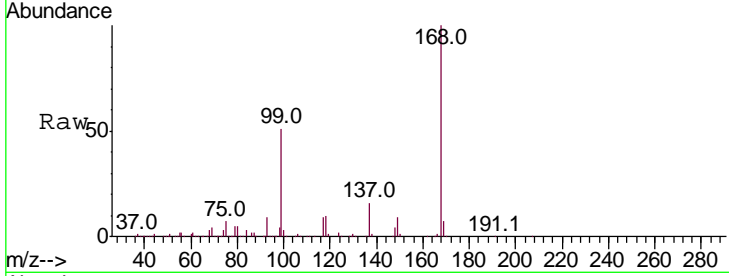




#38
 Carbon Tetrachloride
 Concen: 6.756 ug/l
 RT: 7.96 min Scan# 1045
 Delta R.T. -0.12 min
 Lab File: VW005016.D
 Acq: 30 Aug 2018 14:17

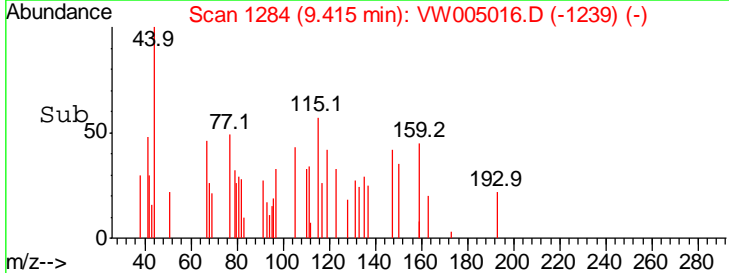
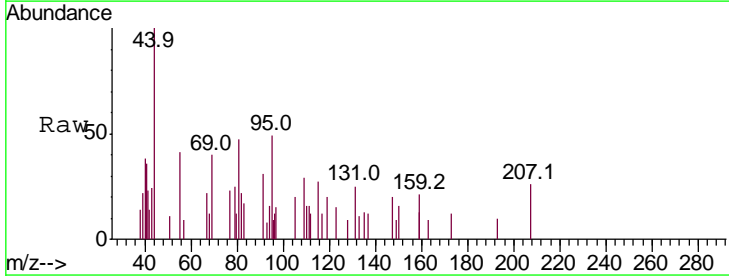
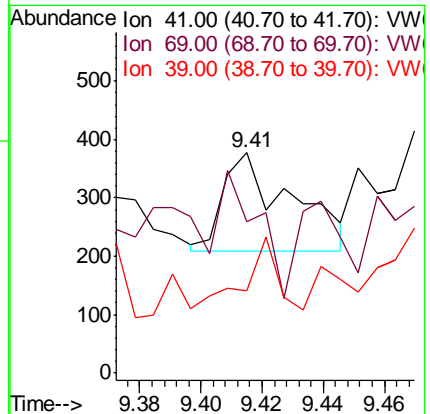
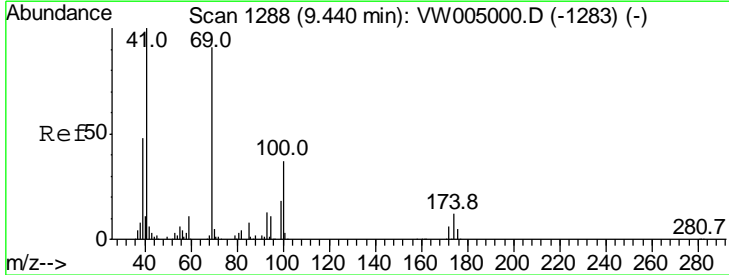
Instrument :
 MSVOA_W
 ClientSampled :

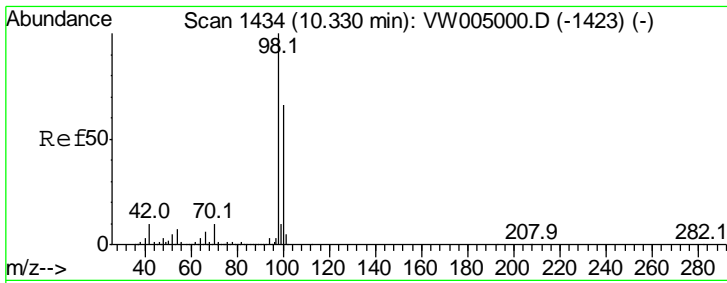
Tgt Ion	Resp	Lower	Upper
117	100		
119	7.2	77.8	116.8#
121	0.0	25.2	37.8#



#48
 Methyl methacrylate
 Concen: 2.788 ug/l
 RT: 9.41 min Scan# 1284
 Delta R.T. -0.02 min
 Lab File: VW005016.D
 Acq: 30 Aug 2018 14:17

Tgt Ion	Resp	Lower	Upper
41	100		
69	70.3	72.5	108.7#
39	32.0	37.0	55.6#

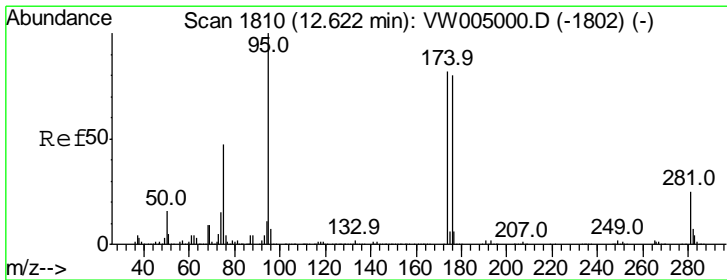
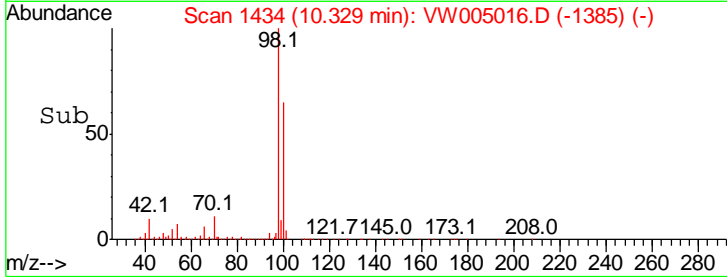
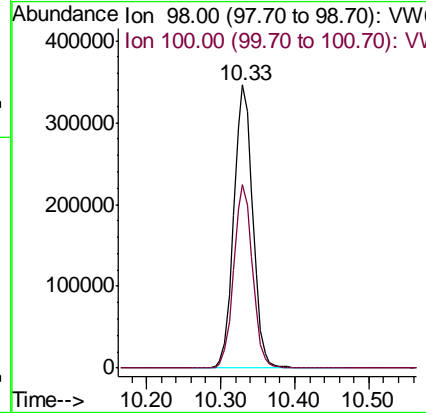
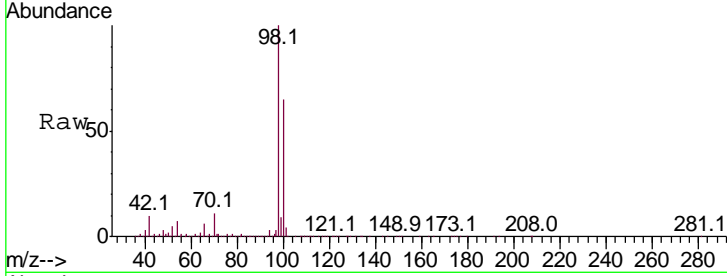




#50
 Toluene-d8
 Concen: 34.976 ug/l
 RT: 10.33 min Scan# 1434
 Delta R.T. -0.00 min
 Lab File: VW005016.D
 Acq: 30 Aug 2018 14:17

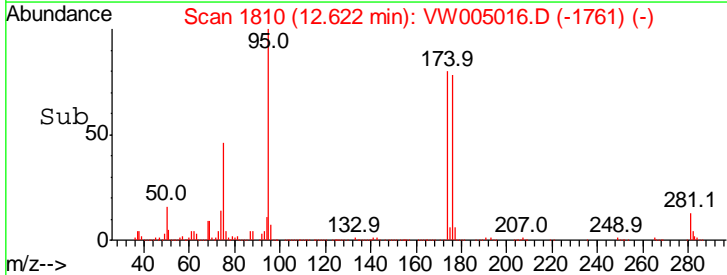
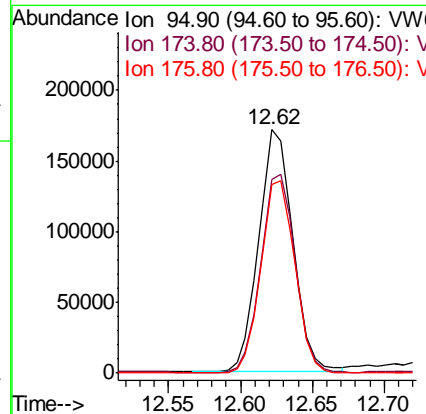
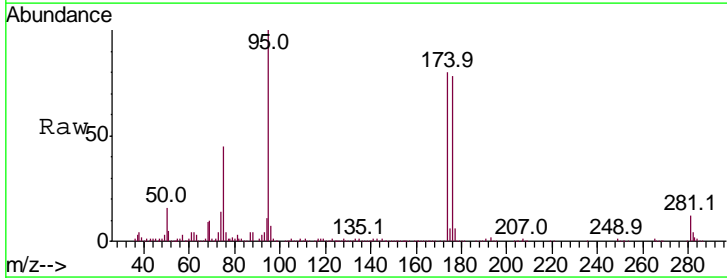
Instrument :
 MSVOA_W
 ClientSampled :

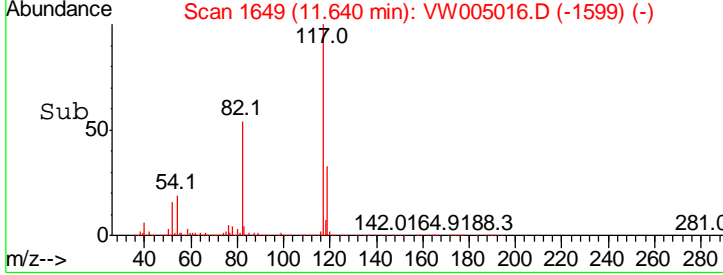
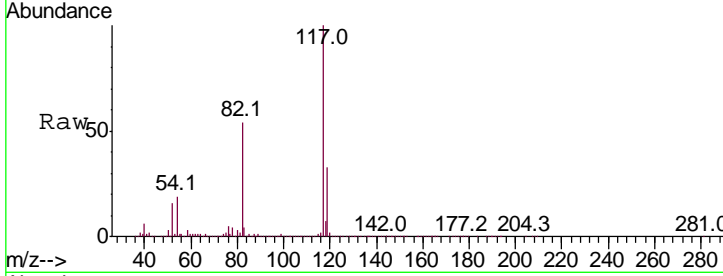
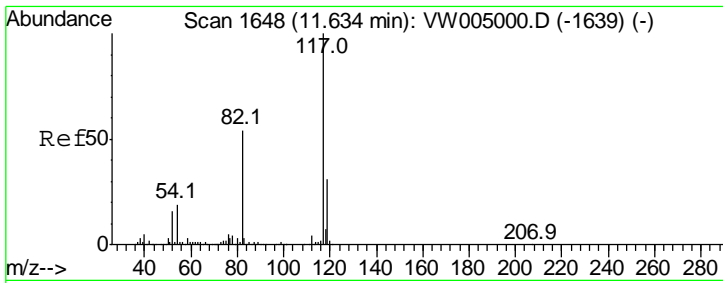
Tgt Ion	Resp	Lower	Upper
98	100		
100	64.3	51.9	77.9



#62
 4-Bromofluorobenzene
 Concen: 43.557 ug/l
 RT: 12.62 min Scan# 1810
 Delta R.T. -0.00 min
 Lab File: VW005016.D
 Acq: 30 Aug 2018 14:17

Tgt Ion	Resp	Lower	Upper
95	100		
174	82.0	0.0	173.4
176	79.3	0.0	167.8

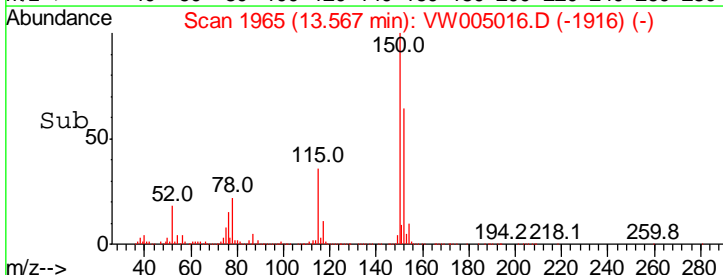
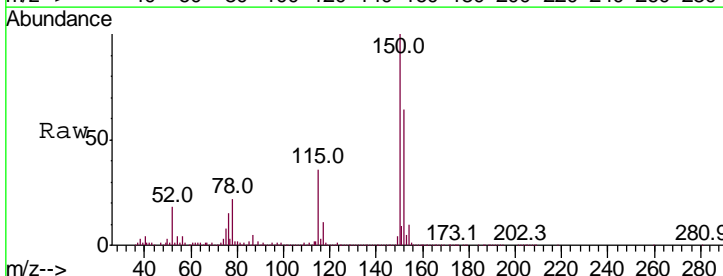
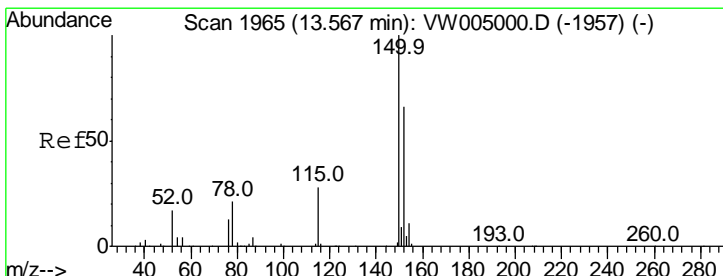
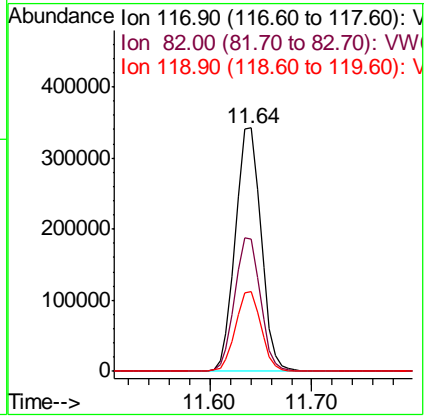




#63
 Chlorobenzene-d5
 Concen: 50.000 ug/l
 RT: 11.64 min Scan# 1649
 Delta R.T. 0.01 min
 Lab File: VW005016.D
 Acq: 30 Aug 2018 14:17

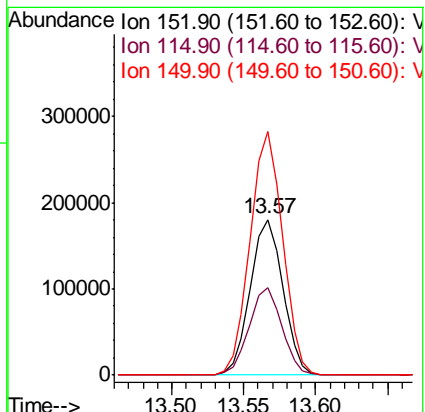
Instrument :
 MSVOA_W
 ClientSampled :

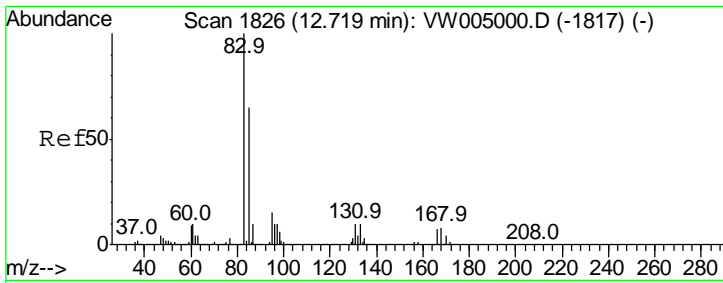
Tgt Ion	Resp	Lower	Upper
117	595199		
82	54.1	43.3	64.9
119	32.6	25.0	37.6



#72
 1,4-Dichlorobenzene-d4
 Concen: 50.000 ug/l
 RT: 13.57 min Scan# 1965
 Delta R.T. -0.00 min
 Lab File: VW005016.D
 Acq: 30 Aug 2018 14:17

Tgt Ion	Resp	Lower	Upper
152	283748		
115	55.7	28.0	83.9
150	155.2	0.0	347.2

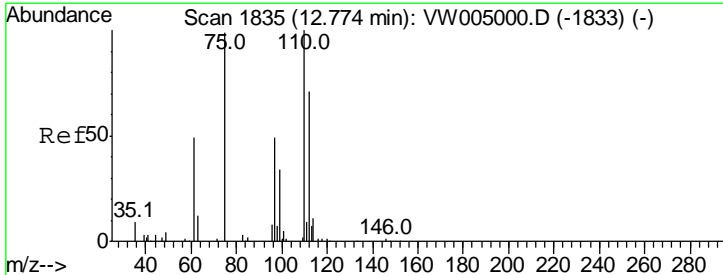
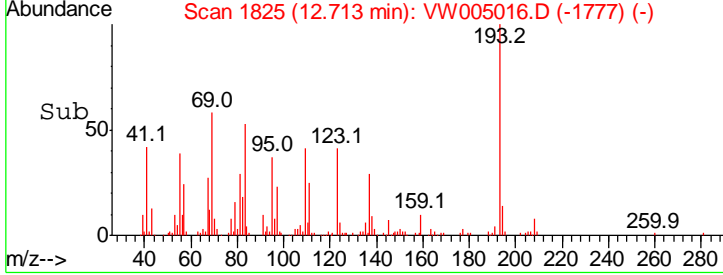
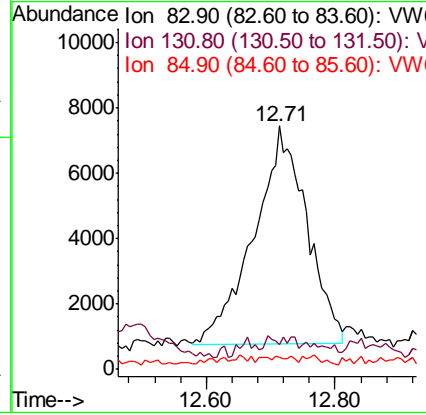
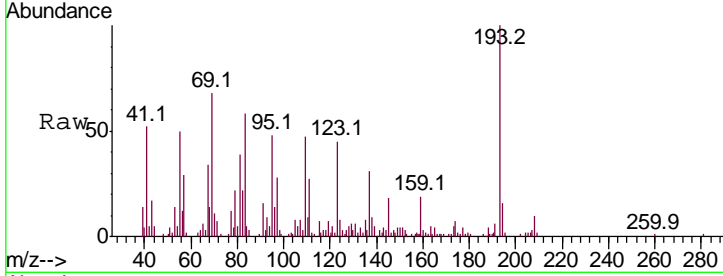




#75
 1,1,2,2-Tetrachloroethane
 Concen: 13.359 ug/l
 RT: 12.71 min Scan# 1825
 Delta R.T. -0.01 min
 Lab File: VW005016.D
 Acq: 30 Aug 2018 14:17

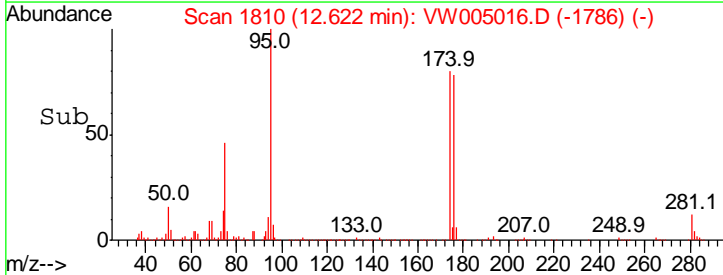
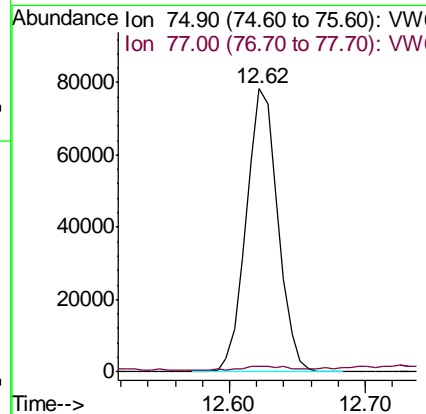
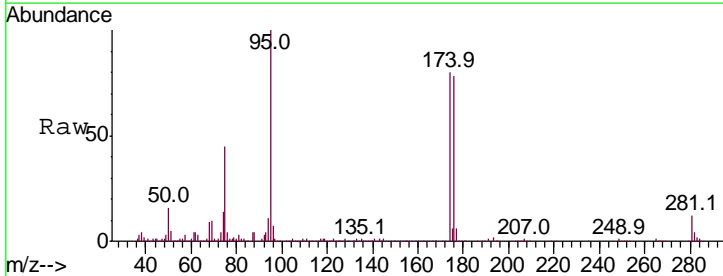
Instrument : MSVOA_W
 ClientSampled :

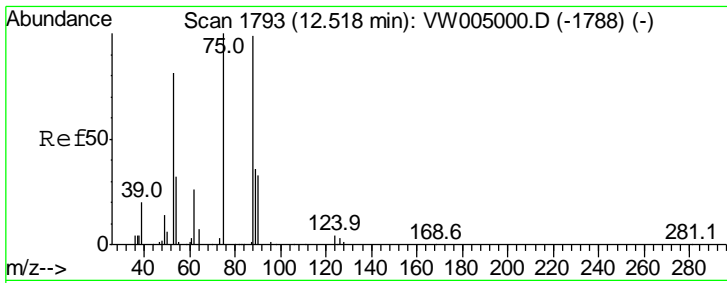
Tgt Ion	Resp	Lower	Upper
83	100		
131	0.7	5.5	16.5#
85	0.0	31.9	95.9#



#76
 1,2,3-Trichloropropane
 Concen: 63.470 ug/l
 RT: 12.62 min Scan# 1810
 Delta R.T. -0.15 min
 Lab File: VW005016.D
 Acq: 30 Aug 2018 14:17

Tgt Ion	Resp	Lower	Upper
75	100		
77	2.2	0.0	0.0#

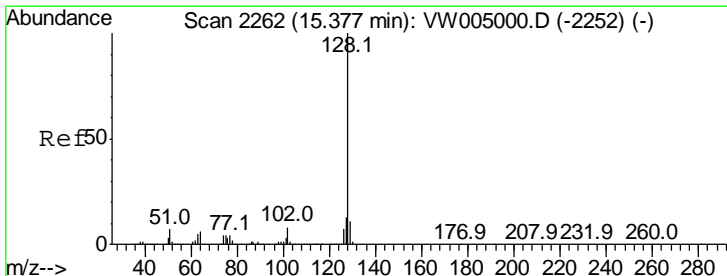
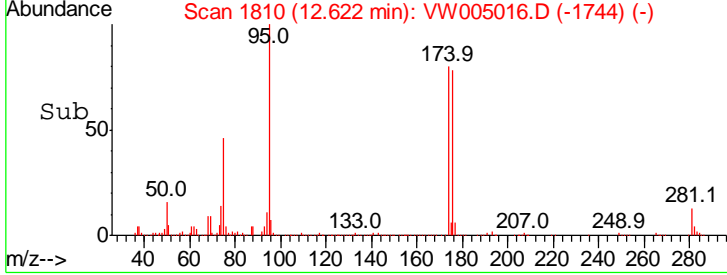
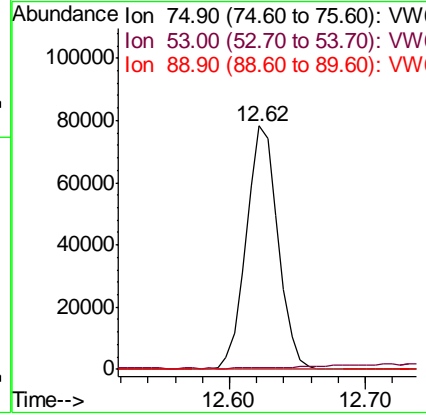
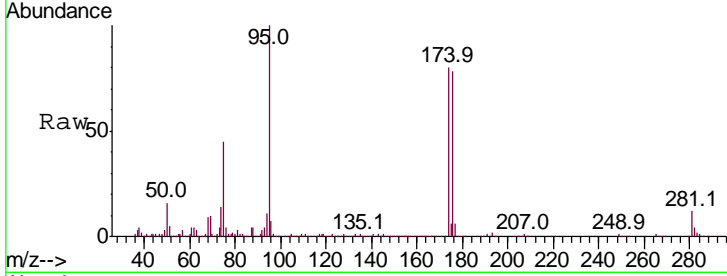




#81
 trans-1,4-Dichloro-2-butene
 Concen: 143.444 ug/l
 RT: 12.62 min Scan# 1810
 Delta R.T. 0.10 min
 Lab File: VW005016.D
 Acq: 30 Aug 2018 14:17

Instrument : MSVOA_W
 ClientSampled :

Tgt Ion	Resp	Lower	Upper
75	127553		
53	0.0	67.4	101.2#
89	0.1	35.0	52.6#



#95
 Naphthalene
 Concen: 4.567 ug/l
 RT: 15.38 min Scan# 2263
 Delta R.T. 0.01 min
 Lab File: VW005016.D
 Acq: 30 Aug 2018 14:17

Tgt Ion	Resp	Lower	Upper
128	3815		
127	18.8	10.5	15.7#
129	11.1	8.7	13.1

