

Data Path : Z:\VOASRV\HPCHEM1\MSVOA W\DATA\VW083019\
 Data File : VW012381.D
 Acq On : 31 Aug 2019 05:56
 Operator : SY/VA
 Sample : K4517-02
 Misc : 5.97G/5ML/MSVOA W/SOIL
 ALS Vial : 48 Sample Multiplier: 1

Instrument :
 MSVOA_W
 ClientSampleId :
 T2-S-A1-(2.5)

Quant Time: Aug 31 06:37:00 2019
 Quant Method : Z:\VOASRV\HPCHEM1\MSVOA_W\METHOD\82W082319S.M
 Quant Title : SW846 8260
 QLast Update : Mon Aug 26 07:18:31 2019
 Response via : Initial Calibration

Internal Standards	R.T.	QIon	Response	Conc	Units	Dev(Min)
1) Pentafluorobenzene	7.95	168	195397	50.00	ug/l	0.00
34) 1,4-Difluorobenzene	8.84	114	322242	50.00	ug/l	0.00
63) Chlorobenzene-d5	11.63	117	251724	50.00	ug/l	0.00
72) 1,4-Dichlorobenzene-d4	13.56	152	87660	50.00	ug/l	0.00

System Monitoring Compounds

33) 1,2-Dichloroethane-d4	8.30	65	134117	57.74	ug/l	0.00
Spiked Amount				50.000		
			Recovery	=	115.48%	
35) Dibromofluoromethane	7.88	113	102853	53.47	ug/l	0.00
Spiked Amount				50.000		
			Recovery	=	106.94%	
50) Toluene-d8	10.32	98	388878	49.86	ug/l	0.00
Spiked Amount				50.000		
			Recovery	=	99.72%	
62) 4-Bromofluorobenzene	12.62	95	110127	40.06	ug/l	0.00
Spiked Amount				50.000		
			Recovery	=	80.12%	

Target Compounds

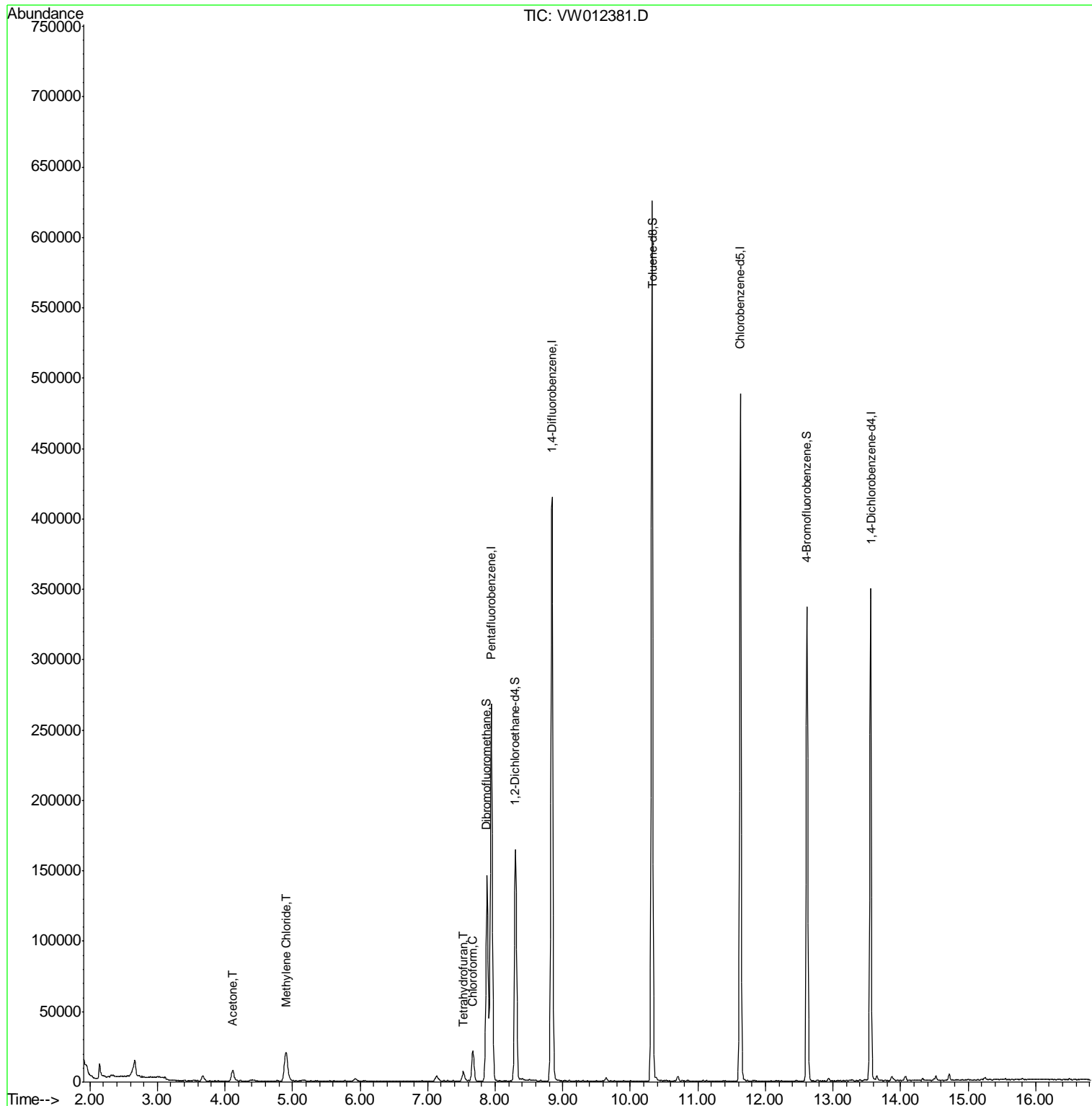
					Qvalue	
16) Acetone	4.12	43	13834	23.299	ug/l	98
20) Methylene Chloride	4.90	84	15314	6.823	ug/l	98
29) Tetrahydrofuran	7.52	42	5451	11.261	ug/l	95
30) Chloroform	7.68	83	19064	4.927	ug/l	98

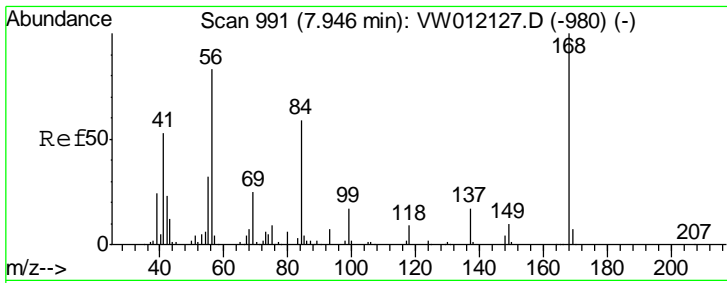
(#) = qualifier out of range (m) = manual integration (+) = signals summed

Data Path : Z:\VOASRV\HPCHEM1\MSVOA W\DATA\VW083019\
 Data File : VW012381.D
 Acq On : 31 Aug 2019 05:56
 Operator : SY/VA
 Sample : K4517-02
 Misc : 5.97G/5ML/MSVOA W/SOIL
 ALS Vial : 48 Sample Multiplier: 1

Instrument :
 MSVOA_W
 ClientSampleId :
 T2-S-A1-(2.5)

Quant Time: Aug 31 06:37:00 2019
 Quant Method : Z:\VOASRV\HPCHEM1\MSVOA_W\METHOD\82W082319S.M
 Quant Title : SW846 8260
 QLast Update : Mon Aug 26 07:18:31 2019
 Response via : Initial Calibration

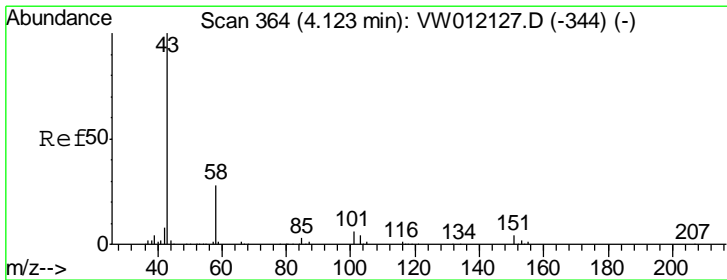
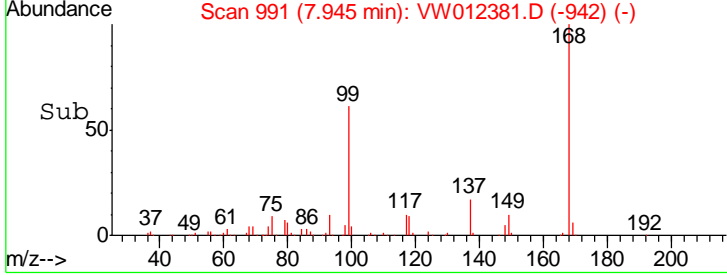
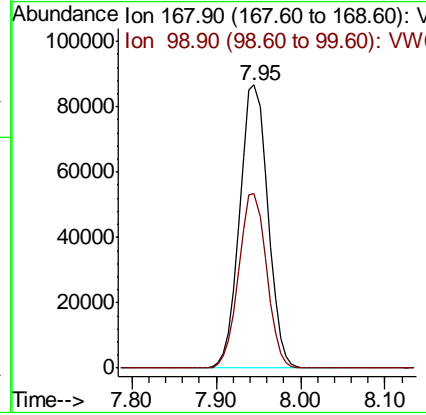
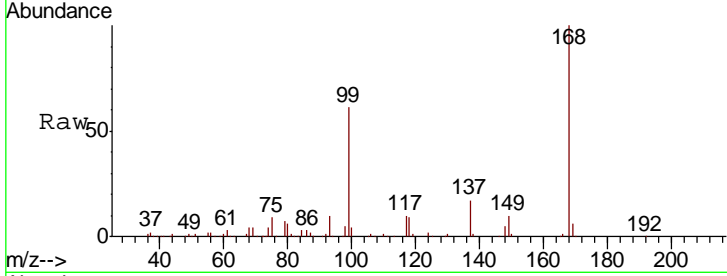




#1
 Pentafluorobenzene
 Concen: 50.000 ug/l
 RT: 7.95 min Scan# 991
 Delta R.T. -0.00 min
 Lab File: VW012381.D
 Acq: 31 Aug 2019 05:56

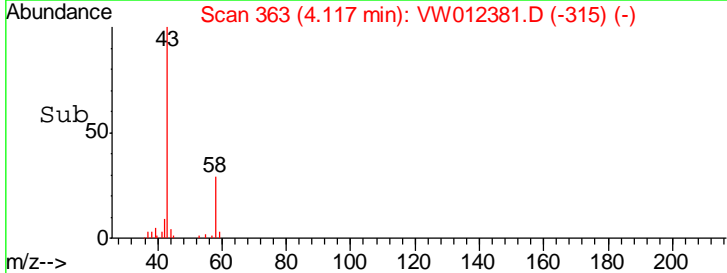
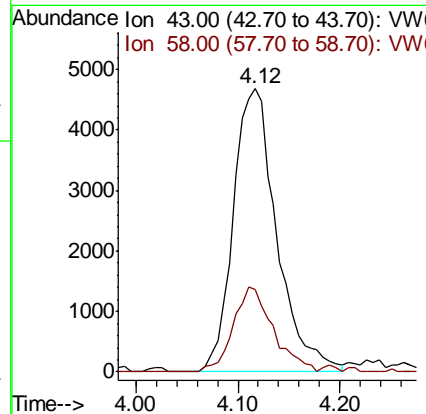
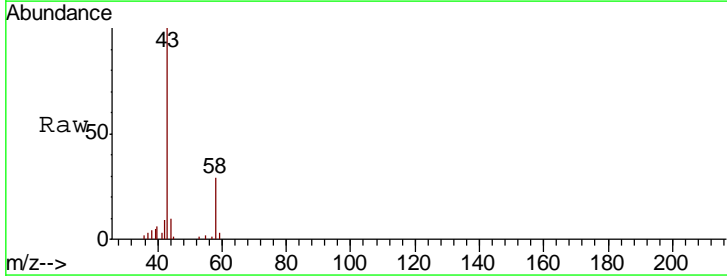
Instrument :
 MSVOA_W
 ClientSampled :
 T2-S-A1-(2.5)

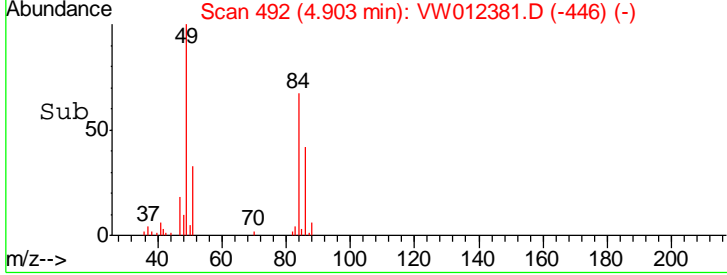
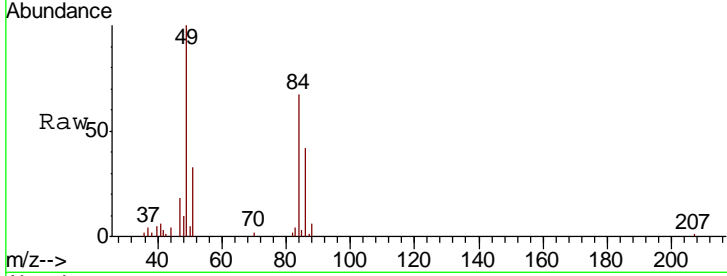
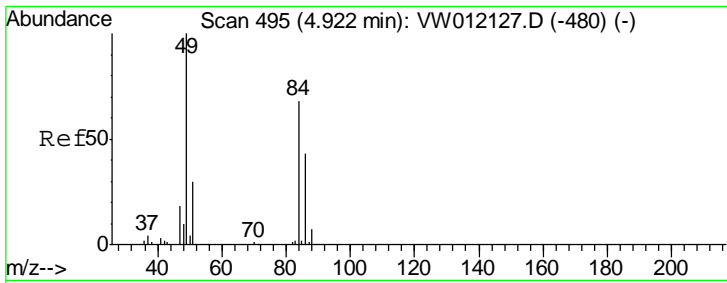
Tgt Ion: 168 Resp: 195397
 Ion Ratio Lower Upper
 168 100
 99 61.5 49.2 73.8



#16
 Acetone
 Concen: 23.299 ug/l
 RT: 4.12 min Scan# 363
 Delta R.T. -0.01 min
 Lab File: VW012381.D
 Acq: 31 Aug 2019 05:56

Tgt Ion: 43 Resp: 13834
 Ion Ratio Lower Upper
 43 100
 58 29.2 22.4 33.6

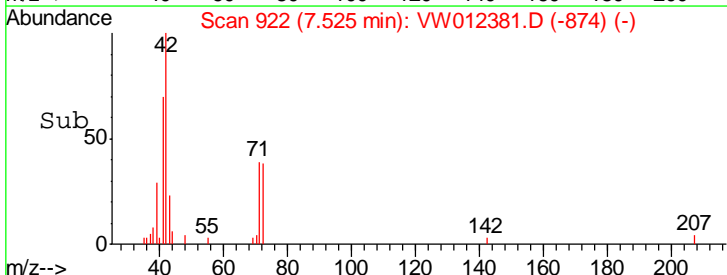
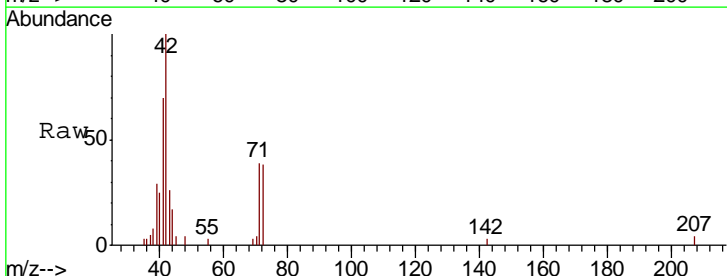
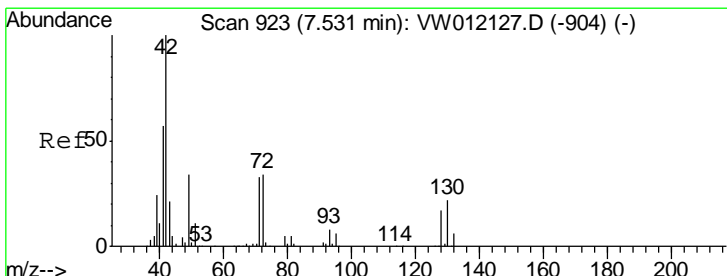
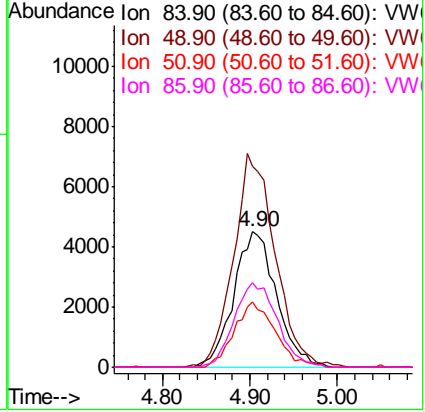




#20
 Methylene Chloride
 Concen: 6.823 ug/l
 RT: 4.90 min Scan# 492
 Delta R.T. -0.02 min
 Lab File: VW012381.D
 Acq: 31 Aug 2019 05:56

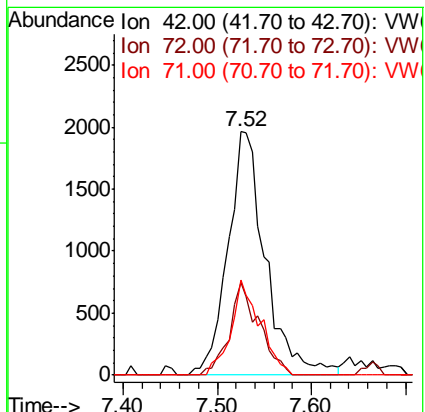
Instrument :
 MSVOA_W
 ClientSampled :
 T2-S-A1-(2.5)

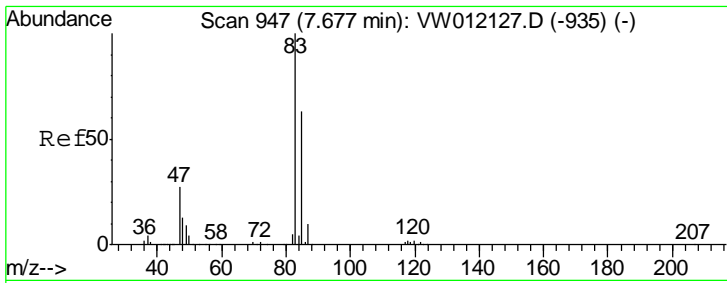
Tgt Ion	Resp	Lower	Upper
84	15314		
84	100		
49	146.7	117.8	176.8
51	48.3	35.6	53.4
86	62.4	51.2	76.8



#29
 Tetrahydrofuran
 Concen: 11.261 ug/l
 RT: 7.52 min Scan# 922
 Delta R.T. -0.01 min
 Lab File: VW012381.D
 Acq: 31 Aug 2019 05:56

Tgt Ion	Resp	Lower	Upper
42	5451		
42	100		
72	30.3	27.3	40.9
71	30.4	25.5	38.3

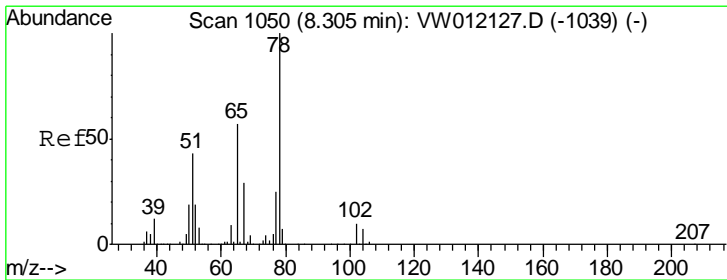
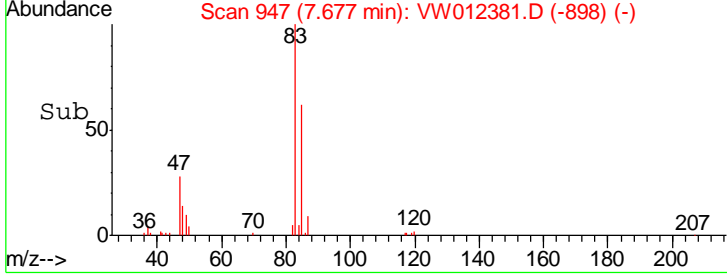
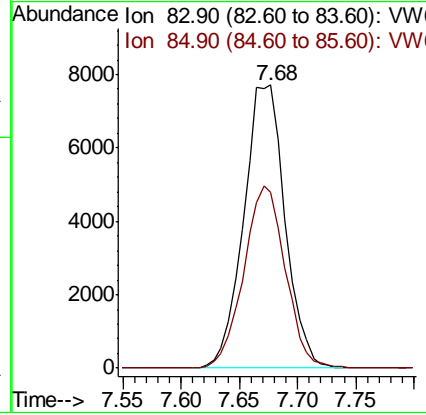
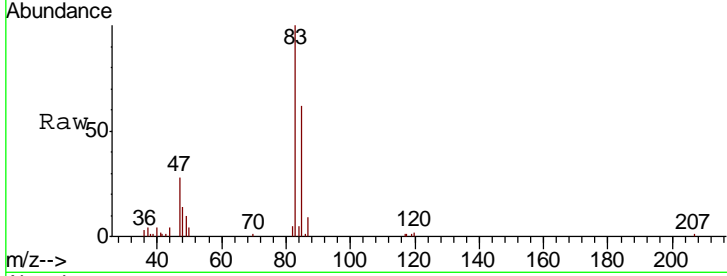




#30
 Chloroform
 Concen: 4.927 ug/l
 RT: 7.68 min Scan# 947
 Delta R.T. -0.00 min
 Lab File: VW012381.D
 Acq: 31 Aug 2019 05:56

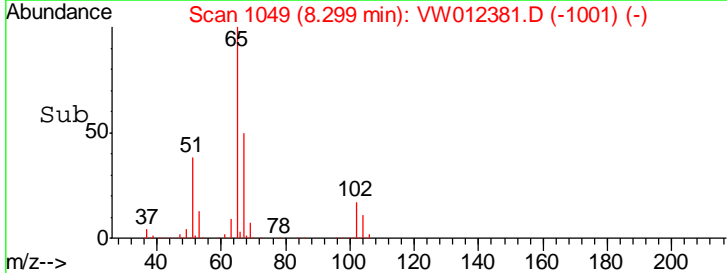
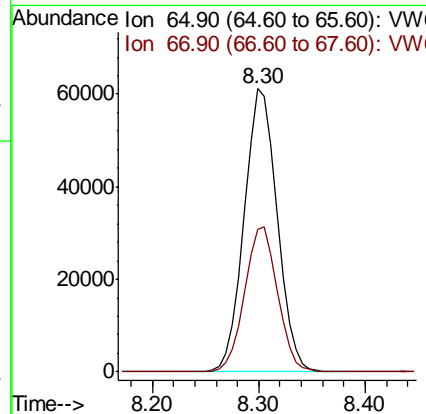
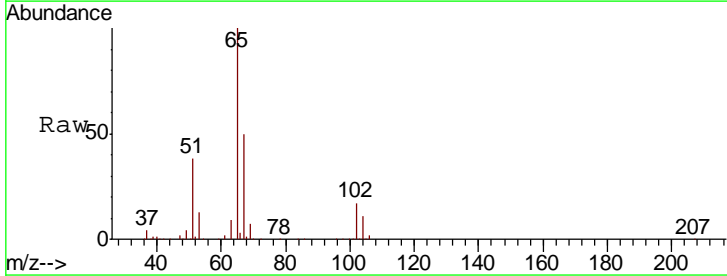
Instrument :
 MSVOA_W
 ClientSampled :
 T2-S-A1-(2.5)

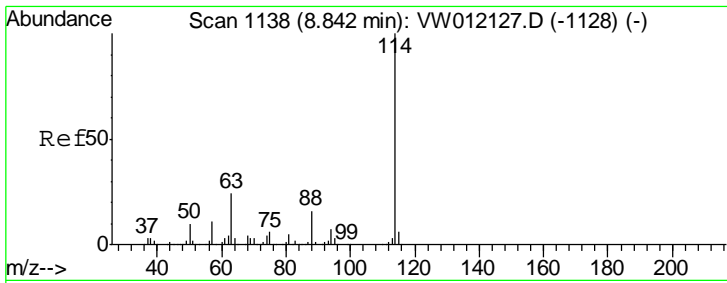
Tgt Ion: 83 Resp: 19064
 Ion Ratio Lower Upper
 83 100
 85 62.1 50.6 76.0



#33
 1,2-Dichloroethane-d4
 Concen: 57.740 ug/l
 RT: 8.30 min Scan# 1049
 Delta R.T. -0.01 min
 Lab File: VW012381.D
 Acq: 31 Aug 2019 05:56

Tgt Ion: 65 Resp: 134117
 Ion Ratio Lower Upper
 65 100
 67 50.9 0.0 102.6

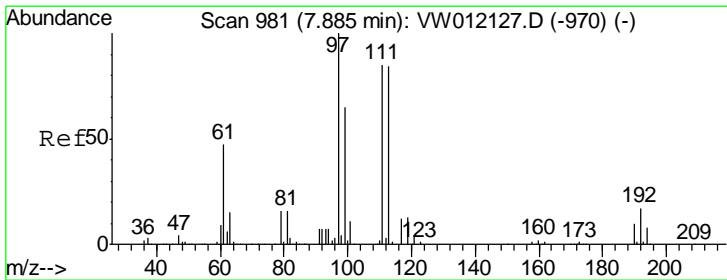
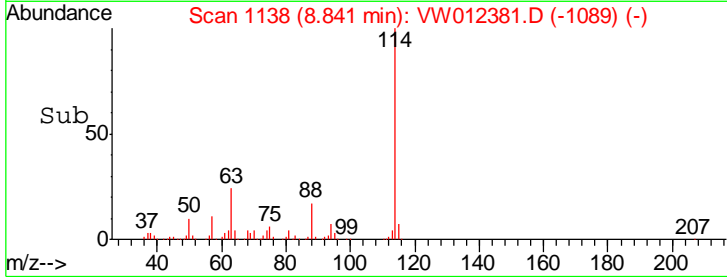
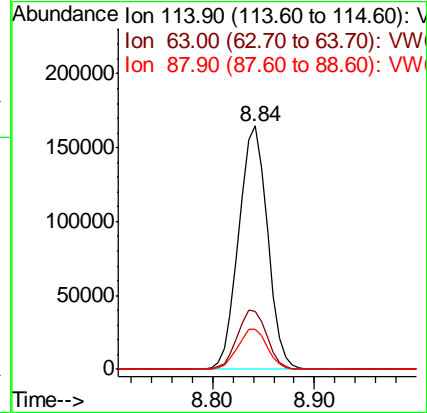
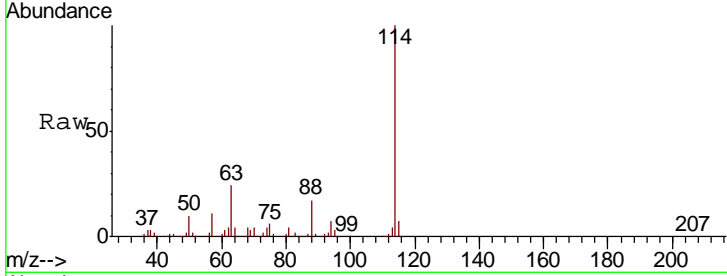




#34
 1,4-Difluorobenzene
 Concen: 50.000 ug/l
 RT: 8.84 min Scan# 1138
 Delta R.T. -0.00 min
 Lab File: VW012381.D
 Acq: 31 Aug 2019 05:56

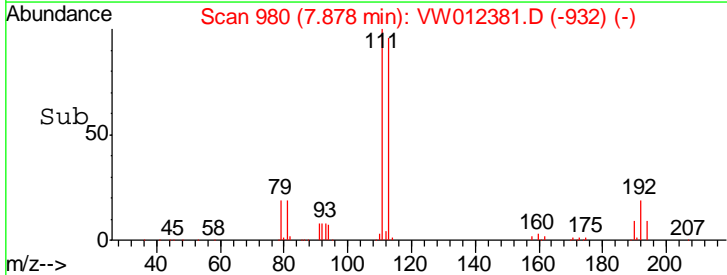
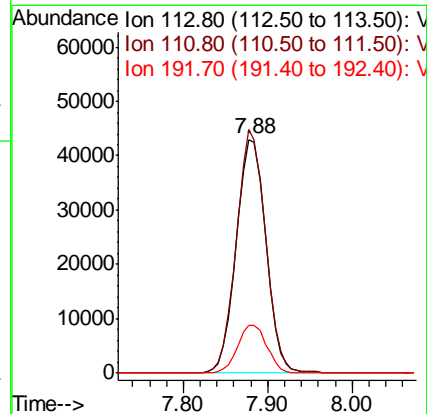
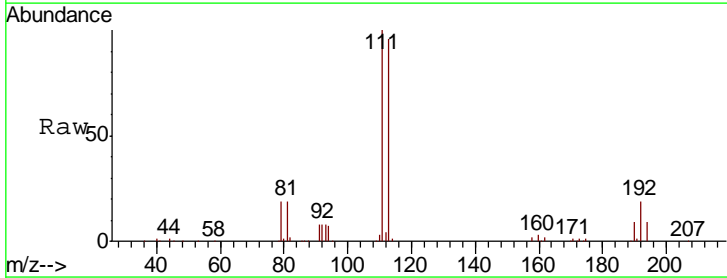
Instrument :
 MSVOA_W
 ClientSampled :
 T2-S-A1-(2.5)

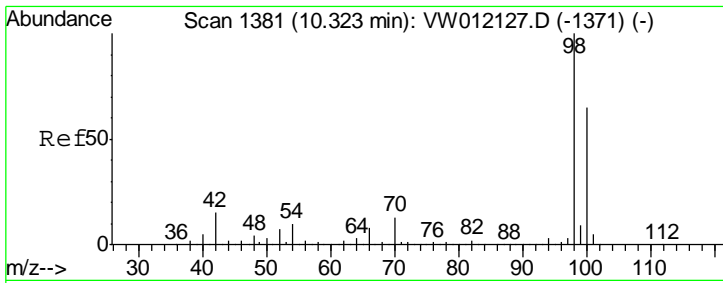
Tgt Ion	Resp	Lower	Upper
114	322242		
63	24.0	0.0	48.6
88	16.7	0.0	32.2



#35
 Dibromofluoromethane
 Concen: 53.473 ug/l
 RT: 7.88 min Scan# 980
 Delta R.T. -0.01 min
 Lab File: VW012381.D
 Acq: 31 Aug 2019 05:56

Tgt Ion	Resp	Lower	Upper
113	102853		
111	101.7	82.7	124.1
192	20.3	16.2	24.2

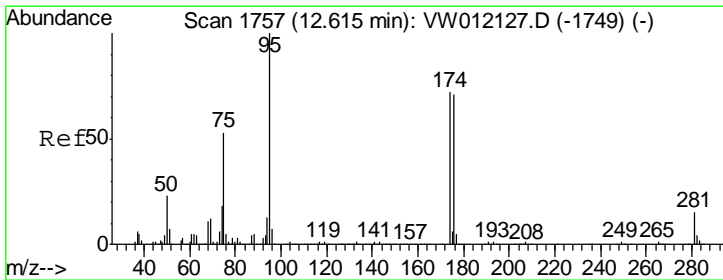
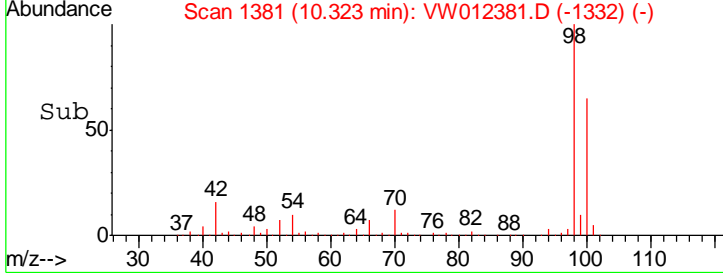
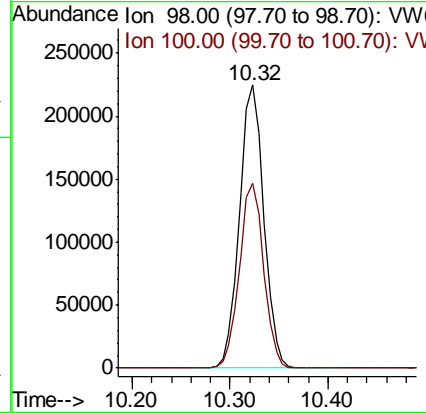
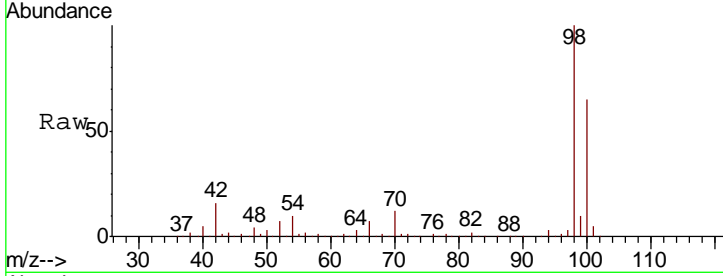




#50
 Toluene-d8
 Concen: 49.862 ug/l
 RT: 10.32 min Scan# 1381
 Delta R.T. -0.00 min
 Lab File: VW012381.D
 Acq: 31 Aug 2019 05:56

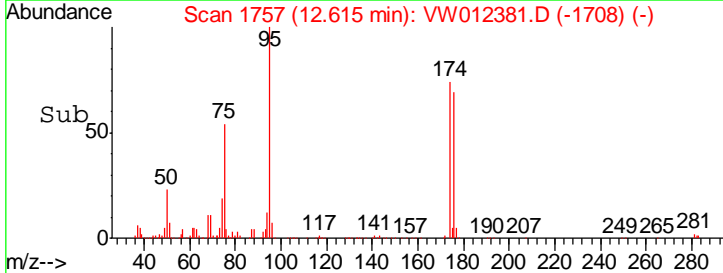
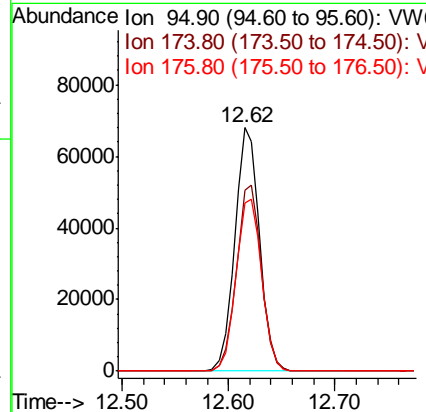
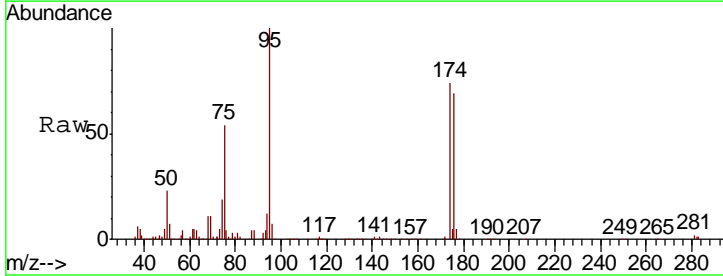
Instrument : MSVOA_W
 ClientSampled : T2-S-A1-(2.5)

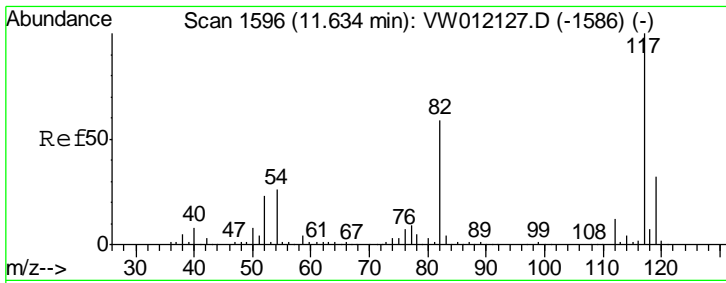
Tgt Ion	Resp	Lower	Upper
98	388878		
100	100	65.2	78.6



#62
 4-Bromofluorobenzene
 Concen: 40.058 ug/l
 RT: 12.62 min Scan# 1757
 Delta R.T. -0.00 min
 Lab File: VW012381.D
 Acq: 31 Aug 2019 05:56

Tgt Ion	Resp	Lower	Upper
95	110127		
174	77.5	0.0	150.8
176	73.5	0.0	148.6

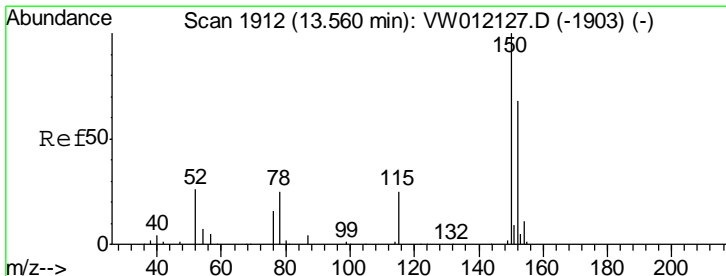
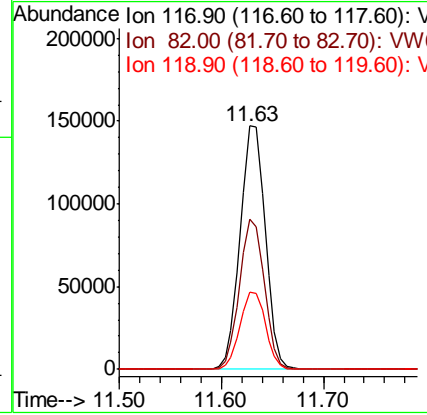
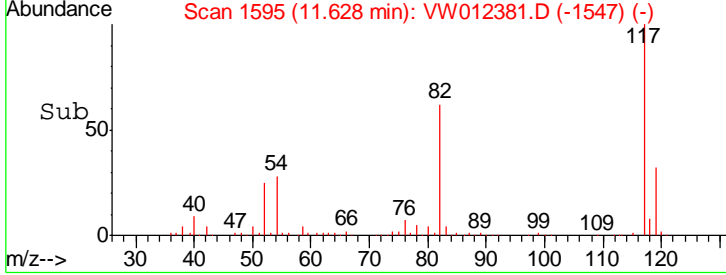
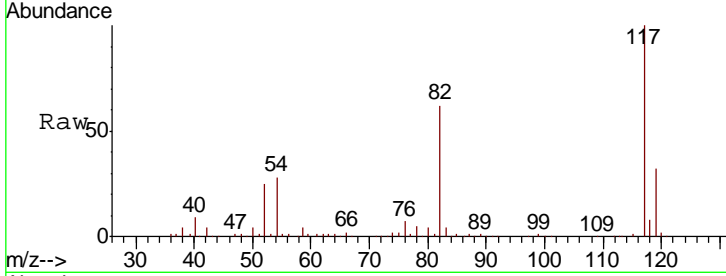




#63
 Chlorobenzene-d5
 Concen: 50.000 ug/l
 RT: 11.63 min Scan# 1595
 Delta R.T. -0.01 min
 Lab File: VW012381.D
 Acq: 31 Aug 2019 05:56

Instrument :
 MSVOA_W
 ClientSampled :
 T2-S-A1-(2.5)

Tgt Ion	Resp	Lower	Upper
117	251724		
82	61.9	47.4	71.2
119	32.0	25.4	38.2



#72
 1,4-Dichlorobenzene-d4
 Concen: 50.000 ug/l
 RT: 13.56 min Scan# 1912
 Delta R.T. -0.00 min
 Lab File: VW012381.D
 Acq: 31 Aug 2019 05:56

Tgt Ion	Resp	Lower	Upper
152	87660		
152	100		
115	59.7	30.1	90.3
150	156.4	0.0	345.8

