

Data Path : Z:\VOASRV\HPCHEM1\MSVOA W\DATA\VW083019\
 Data File : VW012370.D
 Acq On : 31 Aug 2019 01:12
 Operator : SY/VA
 Sample : K4439-05
 Misc : 4.92G/5ML/MSVOA W/SOIL
 ALS Vial : 37 Sample Multiplier: 1

Instrument :
 MSVOA_W
 ClientSampleId :
 S-4A-(1-3)

Integration Parameters: RTEINT.P

Integrator: RTE
 Smoothing : ON Filtering: 5
 Sampling : 1 Min Area: 3 % of largest Peak
 Start Thrs: 0.2 Max Peaks: 100
 Stop Thrs : 0 Peak Location: TOP

If leading or trailing edge < 100 prefer < Baseline drop else tangent >
 Peak separation: 5

Method : Z:\VOASRV\HPCHEM1\MSVOA_W\METHOD\82W082319S.M
 Title : SW846 8260

Signal : TIC

peak #	R.T. min	first scan	max scan	last scan	PK TY	peak height	corr. area	corr. % max.	% of total
1	2.148	34	40	47	rBV2	11976	23449	1.98%	0.423%
2	2.672	110	126	132	rBV5	12968	42741	3.62%	0.771%
3	4.117	352	363	373	rBV	9808	28155	2.38%	0.508%
4	4.909	481	493	506	rBV3	10119	36567	3.10%	0.659%
5	7.128	847	857	875	rBV2	9150	30797	2.61%	0.555%
6	7.878	970	980	985	rBV	155427	369254	31.25%	6.657%
7	7.945	985	991	1002	rVB	291519	652776	55.25%	11.768%
8	8.299	1039	1049	1061	rBV	171945	388568	32.89%	7.005%
9	8.842	1129	1138	1148	rBV	447763	890847	75.40%	16.060%
10	10.323	1372	1381	1390	rBV	665196	1181475	100.00%	21.299%
11	11.628	1585	1595	1605	rBV	505449	865846	73.29%	15.609%
12	12.615	1748	1757	1766	rBV	325809	534819	45.27%	9.642%
13	13.560	1905	1912	1919	rBV	308605	501701	42.46%	9.045%

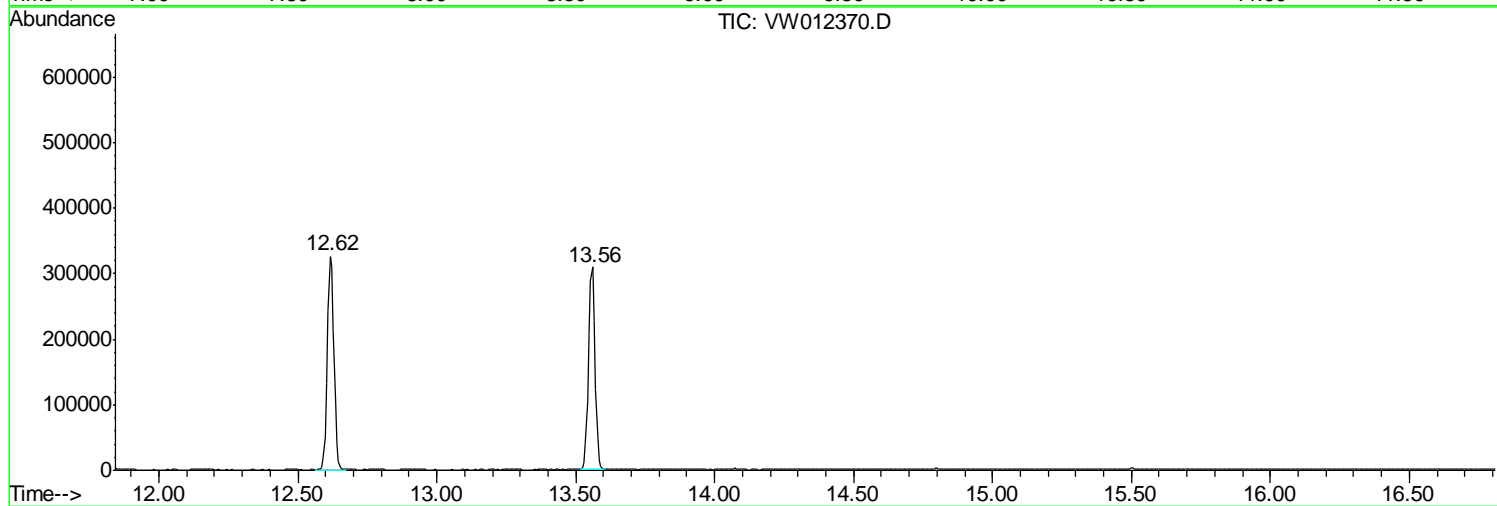
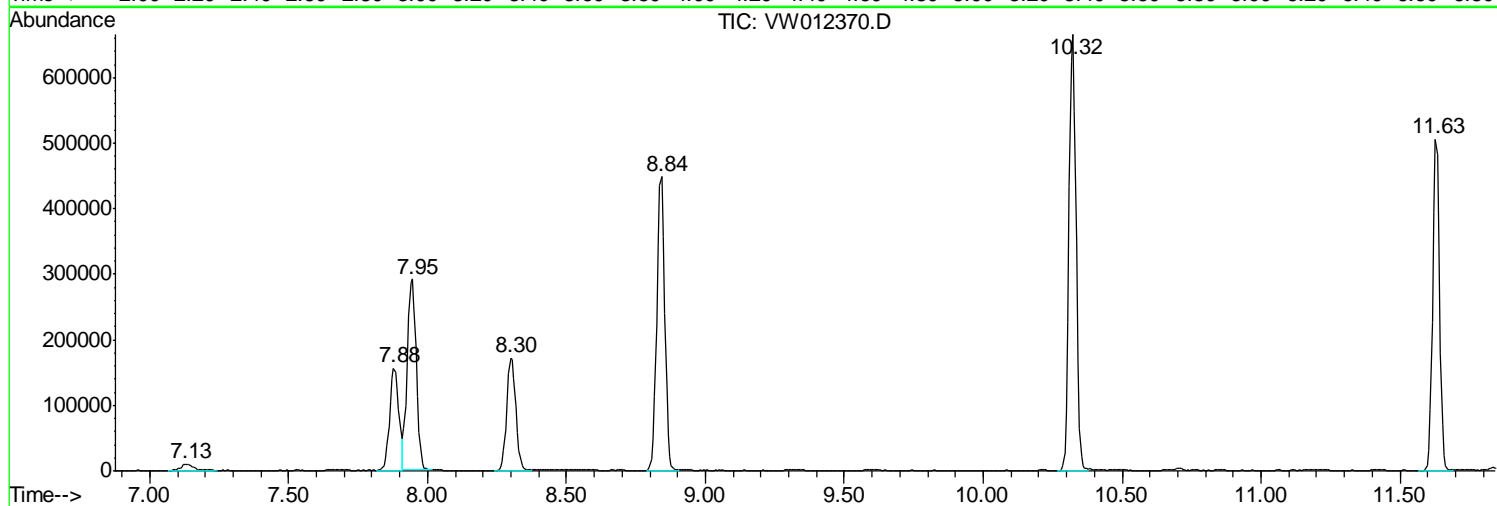
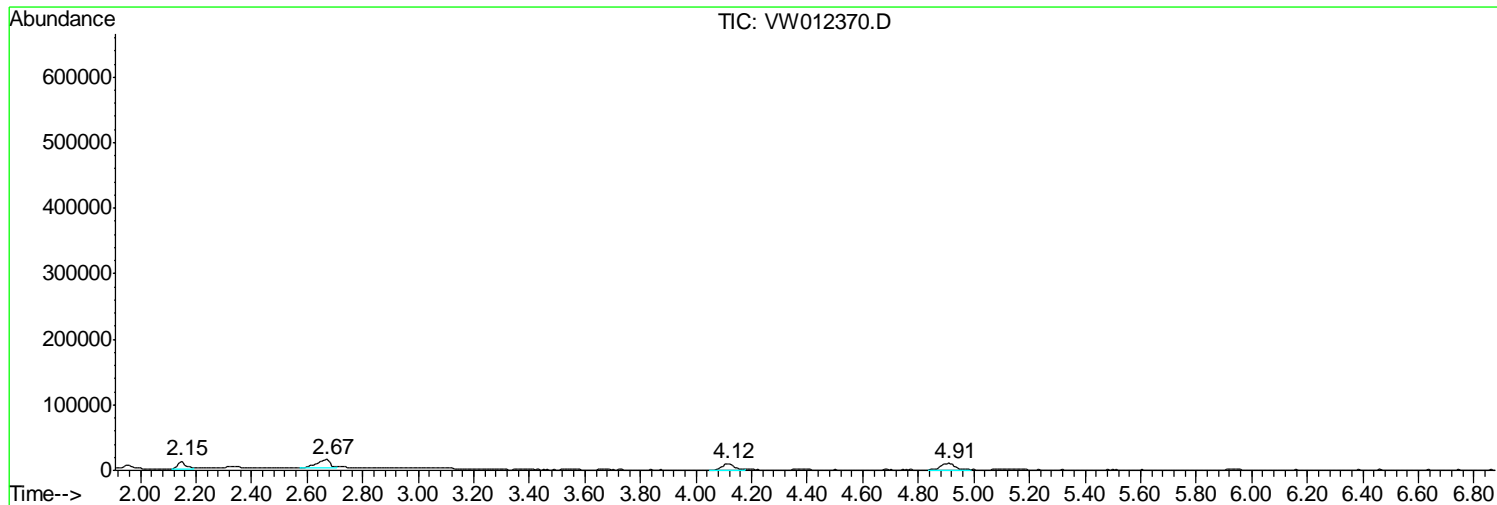
Sum of corrected areas: 5546995

Data Path : Z:\VOASRV\HPCHEM1\MSVOA W\DATA\VW083019\
Data File : VW012370.D
Acq On : 31 Aug 2019 01:12
Operator : SY/VA
Sample : K4439-05
Misc : 4.92G/5ML/MSVOA W/SOIL
ALS Vial : 37 Sample Multiplier: 1

Instrument :
MSVOA_W
ClientSampled :
S-4A-(1-3)

Quant Method : Z:\VOASRV\HPCHEM1\MSVOA_W\METHOD\82W082319S.M
Quant Title : SW846 8260

TIC Library : C:\DATABASE\NIST11.L
TIC Integration Parameters: LSCINT.P



Data Path : Z:\VOASRV\HPCHEM1\MSVOA_W\DATA\VW083019\
Data File : VW012370.D
Acq On : 31 Aug 2019 01:12
Operator : SY/VA
Sample : K4439-05
Misc : 4.92G/5ML/MSVOA_W/SOIL
ALS Vial : 37 Sample Multiplier: 1

Instrument :
MSVOA_W
ClientSampleId :
S-4A-(1-3)

Quant Method : Z:\VOASRV\HPCHEM1\MSVOA_W\METHOD\82W082319S.M
Quant Title : SW846 8260

TIC Library : C:\DATABASE\NIST11.L
TIC Integration Parameters: LSCINT.P

No Library Search Compounds Detected

Data Path : Z:\VOASRV\HPCHEM1\MSVOA_W\DATA\VW083019\
Data File : VW012370.D
Acq On : 31 Aug 2019 01:12
Operator : SY/VA
Sample : K4439-05
Misc : 4.92G/5ML/MSVOA_W/SOIL
ALS Vial : 37 Sample Multiplier: 1

Instrument :
MSVOA_W
ClientSampleId :
S-4A-(1-3)

Quant Method : Z:\VOASRV\HPCHEM1\MSVOA_W\METHOD\82W082319S.M
Quant Title : SW846 8260

TIC Library : C:\DATABASE\NIST11.L
TIC Integration Parameters: LSCINT.P

TIC Top Hit name	RT	EstConc	Units	Response	--Internal Standard--			
					#	RT	Resp	Conc
