

Data Path : Z:\voasrv\HPCHEM1\MSVOA_W\Data\VW083021\
 Data File : VW019935.D
 Acq On : 30 Aug 2021 13:33
 Operator : SY/VA
 Sample : M3579-02
 Misc : 7.07g/10mL/MSVOA_W/SOIL
 ALS Vial : 1 Sample Multiplier: 1

Instrument :
 MSVOA_W
 ClientSampleId :
 GB6A4

Integration Parameters: LSCINT.P

Integrator: RTE
 Smoothing : OFF Filtering: 5
 Sampling : 1 Min Area: 0 % of largest Peak
 Start Thrs: 0.2 Max Peaks: 100
 Stop Thrs : 0 Peak Location: TOP

If leading or trailing edge < 100 prefer < Baseline drop else tangent >
 Peak separation: 5

Method : Z:\voasrv\HPCHEM1\MSVOA_W\Method\SFAMWLM081821SMA.M
 Title : SFAM01.0

Signal : TIC: VW019935.D\data.ms

peak #	R.T. min	first scan	max scan	last scan	PK TY	peak height	corr. area	corr. % max.	% of total
1	2.361	70	75	88	rVB	90876	186476	7.24%	1.780%
2	2.898	157	163	179	rVB	67722	167171	6.49%	1.596%
3	3.398	238	245	256	rVB2	5903	15502	0.60%	0.148%
4	3.739	300	301	303	rBV	350	277	0.01%	0.003%
5	3.849	314	319	322	rBV2	245	556	0.02%	0.005%
6	3.910	328	329	333	rBV2	167	199	0.01%	0.002%
7	4.025	337	348	364	rBV	101311	326678	12.68%	3.119%
8	4.227	380	381	384	rBV	316	298	0.01%	0.003%
9	4.361	400	403	404	rBV2	221	230	0.01%	0.002%
10	4.464	418	420	422	rBV	275	224	0.01%	0.002%
11	4.507	425	427	429	rBV3	212	219	0.01%	0.002%
12	4.580	434	439	442	rVB2	289	360	0.01%	0.003%
13	4.611	442	444	446	rBV2	275	272	0.01%	0.003%
14	4.934	485	497	518	rVV4	12081	53356	2.07%	0.509%
15	5.086	520	522	526	rVB2	270	279	0.01%	0.003%
16	5.129	526	529	530	rBV2	231	196	0.01%	0.002%
17	5.239	542	547	550	rBV3	305	454	0.02%	0.004%
18	5.434	572	579	580	rBV2	1862	3221	0.13%	0.031%
19	5.763	632	633	635	rBV	237	225	0.01%	0.002%
20	5.781	635	636	638	rBV	347	350	0.01%	0.003%
21	5.946	655	663	673	rVV3	4784	13435	0.52%	0.128%
22	6.049	677	680	681	rBV2	173	194	0.01%	0.002%
23	6.074	681	684	685	rBV2	222	205	0.01%	0.002%
24	6.110	688	690	693	rVB2	263	257	0.01%	0.002%
25	6.330	722	726	727	rBV2	201	260	0.01%	0.002%
26	6.909	816	821	827	rVB3	602	1307	0.05%	0.012%
27	7.086	842	850	857	rBV	32389	89679	3.48%	0.856%
28	7.379	895	898	903	rVB2	230	473	0.02%	0.005%
29	7.421	903	905	906	rBV	274	202	0.01%	0.002%
30	7.507	917	919	922	rVV	166	195	0.01%	0.002%
31	7.549	922	926	928	rVV3	509	724	0.03%	0.007%
32	7.653	932	943	955	rBV	177490	424898	16.50%	4.057%
33	7.757	959	960	963	rVV2	343	413	0.02%	0.004%
34	7.885	977	981	983	rBV3	372	463	0.02%	0.004%
35	7.939	983	990	999	rVB10	2777	9082	0.35%	0.087%
36	8.043	999	1007	1013	rVB4	928	2162	0.08%	0.021%

Data Path : Z:\voasrv\HPCHEM1\MSVOA_W\Data\VW083021\
 Data File : VW019935.D
 Acq On : 30 Aug 2021 13:33
 Operator : SY/VA
 Sample : M3579-02
 Misc : 7.07g/10mL/MSVOA_W/SOIL
 ALS Vial : 1 Sample Multiplier: 1

Instrument :
 MSVOA_W
 ClientSampleId :
 GB6A4

Integration Parameters: LSCINT.P

Integrator: RTE
 Smoothing : OFF Filtering: 5
 Sampling : 1 Min Area: 0 % of largest Peak
 Start Thrs: 0.2 Max Peaks: 100
 Stop Thrs : 0 Peak Location: TOP

If leading or trailing edge < 100 prefer < Baseline drop else tangent >
 Peak separation: 5

Method : Z:\voasrv\HPCHEM1\MSVOA_W\Method\SFAMWLM081821SMA.M
 Title : SFAM01.0

37	8.153	1020	1025	1031	rBV5	1901	3933	0.15%	0.038%
38	8.281	1035	1046	1062	rBV2	337271	1019028	39.56%	9.729%
39	8.427	1067	1070	1078	rVB5	1241	2861	0.11%	0.027%
40	8.506	1079	1083	1087	rBV6	1090	1557	0.06%	0.015%
41	8.695	1108	1114	1124	rBV4	3535	8188	0.32%	0.078%
42	8.848	1130	1139	1151	rBV	364332	722133	28.04%	6.895%
43	9.092	1171	1179	1188	rVB2	24896	51740	2.01%	0.494%
44	9.281	1200	1210	1218	rBV	232555	480194	18.64%	4.585%
45	9.494	1243	1245	1246	rVV	284	196	0.01%	0.002%
46	9.524	1246	1250	1253	rVB5	1056	1689	0.07%	0.016%
47	9.598	1260	1262	1263	rBV2	273	277	0.01%	0.003%
48	9.659	1268	1272	1277	rVB4	1122	1658	0.06%	0.016%
49	9.762	1284	1289	1293	rVB2	591	807	0.03%	0.008%
50	9.902	1306	1312	1315	rBV3	616	852	0.03%	0.008%
51	9.957	1317	1321	1326	rBV3	1490	2508	0.10%	0.024%
52	10.037	1327	1334	1342	rBV	122815	221434	8.60%	2.114%
53	10.201	1360	1361	1364	rBV2	274	246	0.01%	0.002%
54	10.268	1369	1372	1373	rVB2	243	205	0.01%	0.002%
55	10.323	1374	1381	1388	rBV	466035	826672	32.09%	7.893%
56	10.390	1388	1392	1399	rVB	32064	57402	2.23%	0.548%
57	10.506	1405	1411	1416	rVB5	3949	8408	0.33%	0.080%
58	10.579	1416	1423	1432	rBV	86957	148262	5.76%	1.416%
59	10.707	1440	1444	1449	rVB3	2210	3529	0.14%	0.034%
60	10.762	1449	1453	1458	rVB3	1264	1699	0.07%	0.016%
61	10.866	1461	1470	1476	rBV	1484049	2575815	100.00%	24.593%
62	10.927	1476	1480	1494	rVB	123044	207819	8.07%	1.984%
63	11.177	1517	1521	1525	rBV4	2134	3451	0.13%	0.033%
64	11.225	1526	1529	1536	rVB6	1618	3082	0.12%	0.029%
65	11.286	1537	1539	1540	rBV2	460	276	0.01%	0.003%
66	11.335	1543	1547	1550	rBV4	880	1166	0.05%	0.011%
67	11.414	1556	1560	1561	rBV2	1244	1216	0.05%	0.012%
68	11.512	1572	1576	1583	rVB2	1056	1577	0.06%	0.015%
69	11.634	1587	1596	1604	rBV	536700	887697	34.46%	8.475%
70	11.731	1606	1612	1620	rVB	26930	45848	1.78%	0.438%
71	11.841	1624	1630	1638	rVB2	10592	21580	0.84%	0.206%
72	12.164	1672	1683	1690	rBV4	4931	10665	0.41%	0.102%
73	12.237	1690	1695	1696	rBV2	610	759	0.03%	0.007%
74	12.292	1702	1704	1706	rVB2	314	257	0.01%	0.002%
75	12.335	1708	1711	1714	rBV4	1285	2079	0.08%	0.020%
76	12.463	1729	1732	1735	rVB5	721	1002	0.04%	0.010%

Data Path : Z:\voasrv\HPCHEM1\MSVOA_W\Data\VW083021\
 Data File : VW019935.D
 Acq On : 30 Aug 2021 13:33
 Operator : SY/VA
 Sample : M3579-02
 Misc : 7.07g/10mL/MSVOA_W/SOIL
 ALS Vial : 1 Sample Multiplier: 1

Instrument :
 MSVOA_W
 ClientSampleId :
 GB6A4

Integration Parameters: LSCINT.P

Integrator: RTE
 Smoothing : OFF Filtering: 5
 Sampling : 1 Min Area: 0 % of largest Peak
 Start Thrs: 0.2 Max Peaks: 100
 Stop Thrs : 0 Peak Location: TOP

If leading or trailing edge < 100 prefer < Baseline drop else tangent >
 Peak separation: 5

Method : Z:\voasrv\HPCHEM1\MSVOA_W\Method\SFAMWLM081821SMA.M
 Title : SFAM01.0

77	12.695	1762	1770	1777	rBV	214937	352243	13.68%	3.363%
78	12.804	1786	1788	1793	rVB2	2845	3168	0.12%	0.030%
79	12.865	1793	1798	1802	rBV2	1939	3220	0.13%	0.031%
80	12.902	1802	1804	1806	rBV3	940	1083	0.04%	0.010%
81	13.103	1833	1837	1840	rBV3	1012	1403	0.05%	0.013%
82	13.164	1845	1847	1848	rBV	521	306	0.01%	0.003%
83	13.188	1848	1851	1853	rVV3	845	1036	0.04%	0.010%
84	13.249	1856	1861	1872	rVB2	5640	11712	0.45%	0.112%
85	13.396	1880	1885	1889	rVV7	1571	2810	0.11%	0.027%
86	13.554	1904	1911	1922	rBV	481462	783405	30.41%	7.480%
87	13.646	1922	1926	1931	rVB2	7838	11918	0.46%	0.114%
88	13.853	1953	1960	1967	rBV	389950	645284	25.05%	6.161%
89	13.981	1979	1981	1984	rBV5	733	793	0.03%	0.008%
90	14.200	2015	2017	2022	rVB3	1521	2307	0.09%	0.022%
91	14.243	2022	2024	2026	rBV	315	352	0.01%	0.003%
92	14.322	2031	2037	2042	rVV7	3242	5800	0.23%	0.055%
93	14.408	2049	2051	2054	rBV3	1166	1511	0.06%	0.014%
94	14.517	2065	2069	2077	rBV5	2232	4458	0.17%	0.043%
95	14.621	2083	2086	2090	rBV4	1004	1360	0.05%	0.013%
96	14.676	2093	2095	2096	rVV	542	316	0.01%	0.003%
97	14.719	2098	2102	2106	rVB5	1405	2137	0.08%	0.020%
98	14.956	2139	2141	2144	rBV4	1128	1300	0.05%	0.012%
99	15.487	2224	2228	2233	rVB2	3555	4900	0.19%	0.047%
100	16.078	2323	2325	2327	rBV3	674	633	0.02%	0.006%

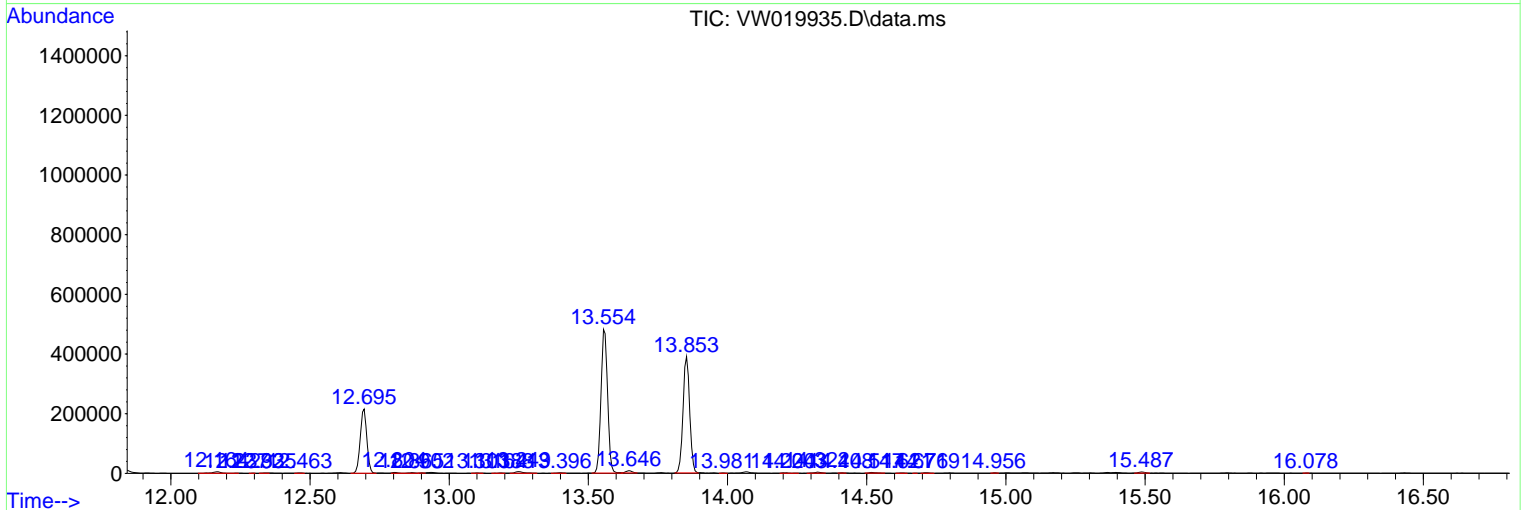
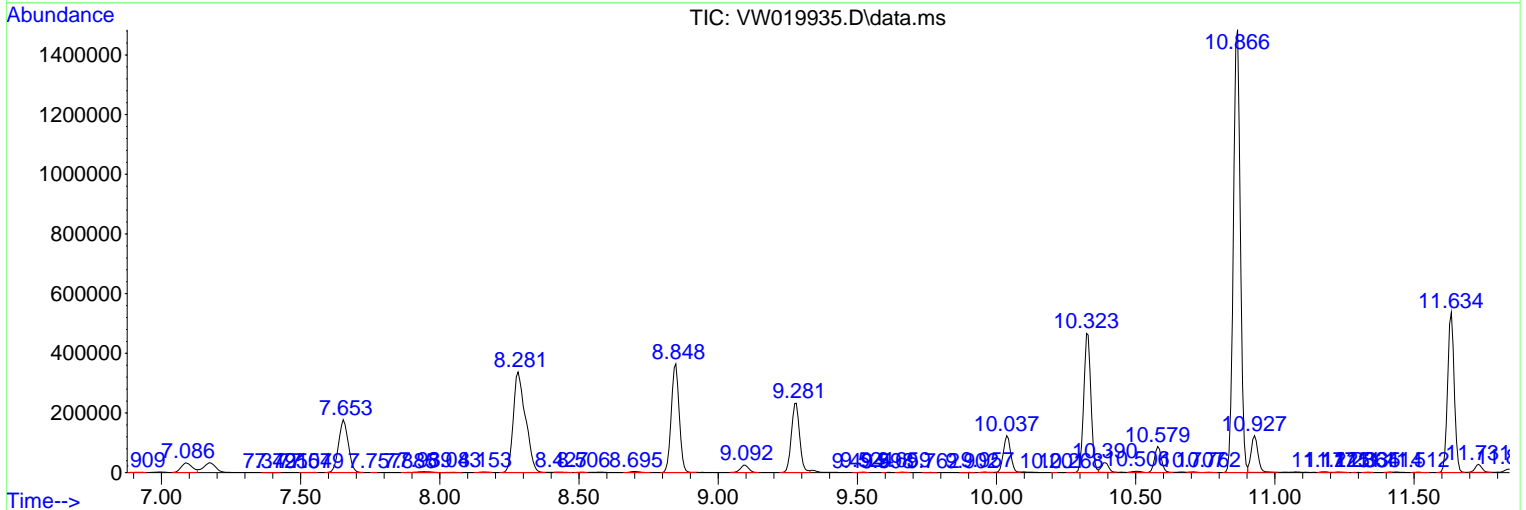
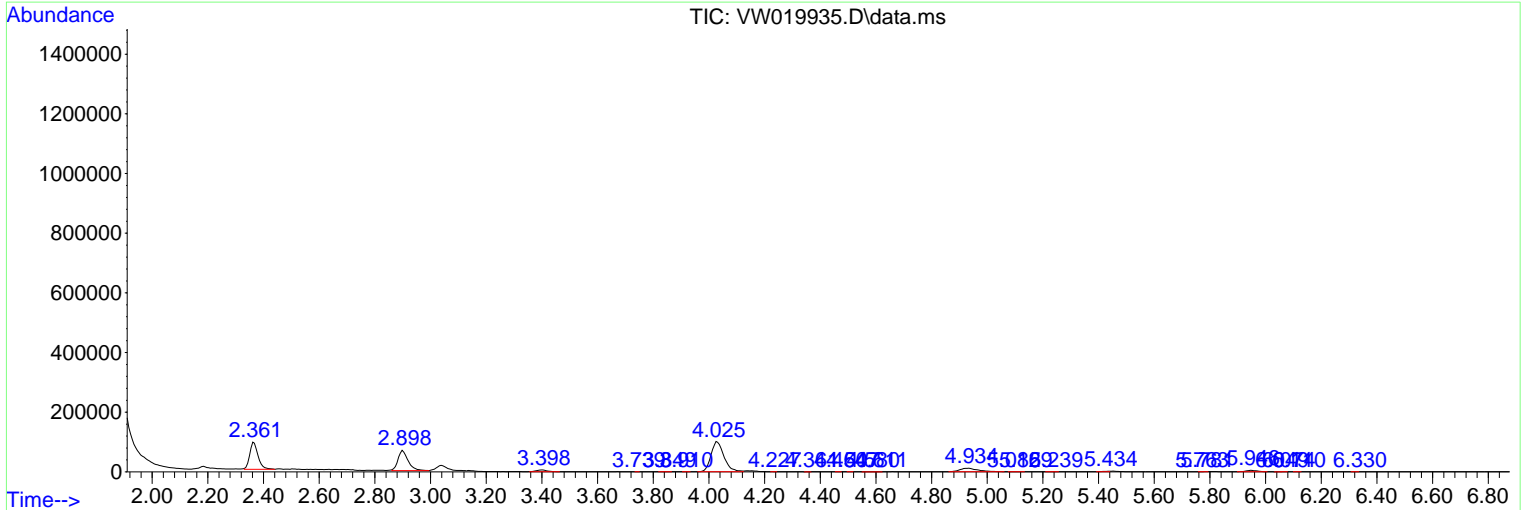
Sum of corrected areas: 10473714

Data Path : Z:\voasrv\HPCHEM1\MSVOA_W\Data\VW083021\
 Data File : VW019935.D
 Acq On : 30 Aug 2021 13:33
 Operator : SY/VA
 Sample : M3579-02
 Misc : 7.07g/10mL/MSVOA_W/SOIL
 ALS Vial : 1 Sample Multiplier: 1

Instrument :
 MSVOA_W
ClientSampleId :
 GB6A4

Quant Method : Z:\voasrv\HPCHEM1\MSVOA_W\Method\SFAMWLM081821SMA.M
 Quant Title : SFAM01.0

TIC Library : C:\Database\NIST20.L
 TIC Integration Parameters: LSCINT.P



Data Path : Z:\voasrv\HPCHEM1\MSVOA_W\Data\VW083021\
Data File : VW019935.D
Acq On : 30 Aug 2021 13:33
Operator : SY/VA
Sample : M3579-02
Misc : 7.07g/10mL/MSVOA_W/SOIL
ALS Vial : 1 Sample Multiplier: 1

Instrument :
MSVOA_W
ClientSampleId :
GB6A4

Quant Method : Z:\voasrv\HPCHEM1\MSVOA_W\Method\SFAMWLM081821SMA.M
Quant Title : SFAM01.0

TIC Library : C:\Database\NIST20.L
TIC Integration Parameters: LSCINT.P

No Library Search Compounds Detected

Data Path : Z:\voasrv\HPCHEM1\MSVOA_W\Data\VW083021\
Data File : VW019935.D
Acq On : 30 Aug 2021 13:33
Operator : SY/VA
Sample : M3579-02
Misc : 7.07g/10mL/MSVOA_W/SOIL
ALS Vial : 1 Sample Multiplier: 1

Instrument :
MSVOA_W
ClientSampleId :
GB6A4

Quant Method : Z:\voasrv\HPCHEM1\MSVOA_W\Method\SFAMWLM081821SMA.M
Quant Title : SFAM01.0

TIC Library : C:\Database\NIST20.L
TIC Integration Parameters: LSCINT.P

TIC Top Hit name	RT	EstConc	Units	Response	--Internal Standard--			
					#	RT	Resp	Conc
