

Data File : VW012425.D  
 Acq On : 01 Sep 2019 03:39  
 Operator : SY/VA  
 Sample : K4516-02  
 Misc : 6.65G/5ML/MSVOA\_W/SOIL  
 ALS Vial : 43 Sample Multiplier: 1

Instrument :  
 MSVOA\_W  
 ClientSampleId :  
 T1-S-B2-(2.5)

Quant Time: Sep 01 04:10:40 2019  
 Quant Method : Z:\VOASRV\HPCHEM1\MSVOA\_W\METHOD\82W082319S.M  
 Quant Title : SW846 8260  
 QLast Update : Mon Aug 26 07:18:31 2019  
 Response via : Initial Calibration

Internal Standards	R.T.	QIon	Response	Conc	Units	Dev(Min)
1) Pentafluorobenzene	7.95	168	72854	50.00	ug/l	0.00
34) 1,4-Difluorobenzene	8.84	114	115555	50.00	ug/l	0.00
63) Chlorobenzene-d5	11.63	117	97219	50.00	ug/l	0.00
72) 1,4-Dichlorobenzene-d4	13.56	152	30156	50.00	ug/l	0.00

System Monitoring Compounds

33) 1,2-Dichloroethane-d4	8.31	65	48779	56.32	ug/l	0.00
Spiked Amount				50.000		
			Recovery	=	112.64%	
35) Dibromofluoromethane	7.88	113	37914	54.97	ug/l	0.00
Spiked Amount				50.000		
			Recovery	=	109.94%	
50) Toluene-d8	10.32	98	143889	51.45	ug/l	0.00
Spiked Amount				50.000		
			Recovery	=	102.90%	
62) 4-Bromofluorobenzene	12.62	95	41209	41.80	ug/l	0.00
Spiked Amount				50.000		
			Recovery	=	83.60%	

Target Compounds

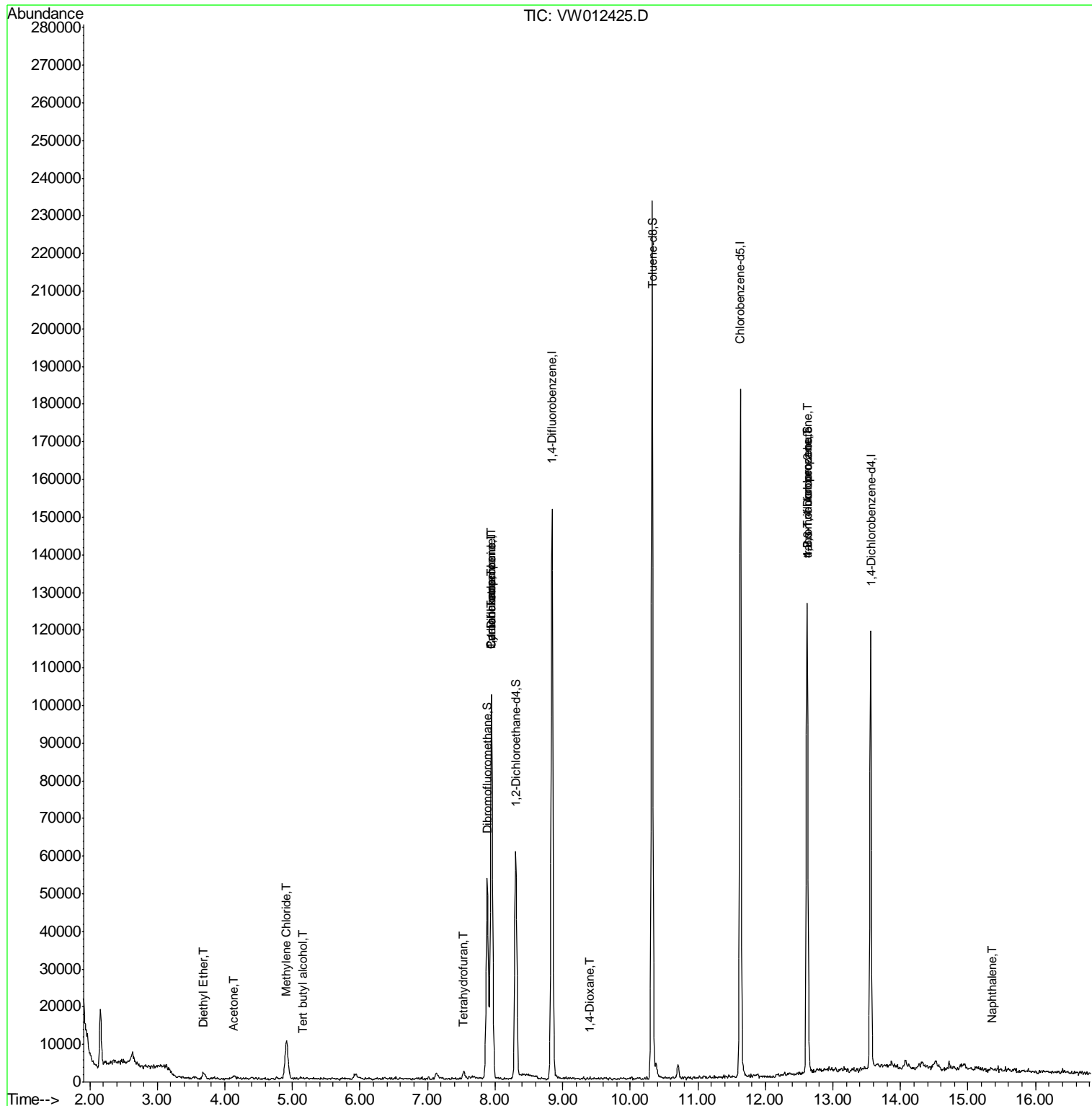
						Qvalue
8) Diethyl Ether	3.68	74	745	1.838	ug/l	93
11) Tert butyl alcohol	5.15	59	419	8.039	ug/l #	71
16) Acetone	4.13	43	1401	6.328	ug/l #	82
20) Methylene Chloride	4.91	84	6879	8.219	ug/l	96
29) Tetrahydrofuran	7.53	42	1515	8.394	ug/l #	85
31) Cyclohexane	7.95	56	2004	1.285	ug/l #	27
36) 1,1-Dichloropropene	7.95	75	6489	5.434	ug/l #	52
38) Carbon Tetrachloride	7.95	117	7516	7.272	ug/l #	16
49) 1,4-Dioxane	9.40	88	19	3.179	ug/l #	1
76) 1,2,3-Trichloropropane	12.62	75	22512	76.650	ug/l #	100
81) trans-1,4-Dichloro-2-buten	12.62	75	22512	168.058	ug/l #	6
95) Naphthalene	15.36	128	116	4.414	ug/l #	69

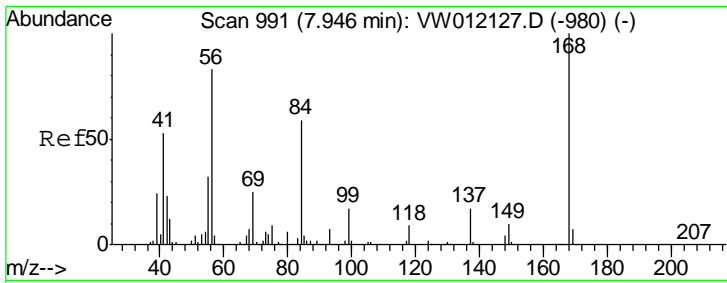
(#) = qualifier out of range (m) = manual integration (+) = signals summed

Data File : VW012425.D  
Acq On : 01 Sep 2019 03:39  
Operator : SY/VA  
Sample : K4516-02  
Misc : 6.65G/5ML/MSVOA\_W/SOIL  
ALS Vial : 43 Sample Multiplier: 1

Instrument :  
MSVOA\_W  
Client Sample ID :  
T1-S-B2-(2.5)

Quant Time: Sep 01 04:10:40 2019  
Quant Method : Z:\VOASRV\HPCHEM1\MSVOA\_W\METHOD\82W082319S.M  
Quant Title : SW846 8260  
QLast Update : Mon Aug 26 07:18:31 2019  
Response via : Initial Calibration

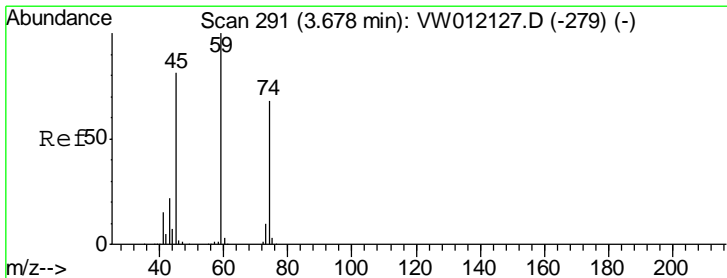
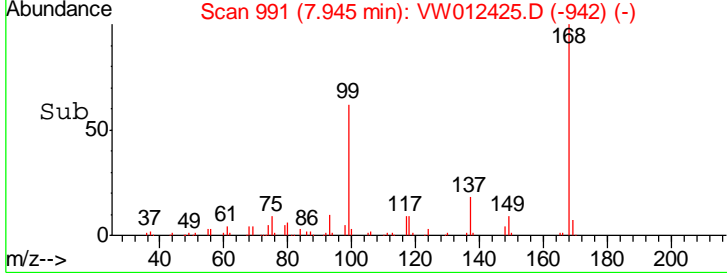
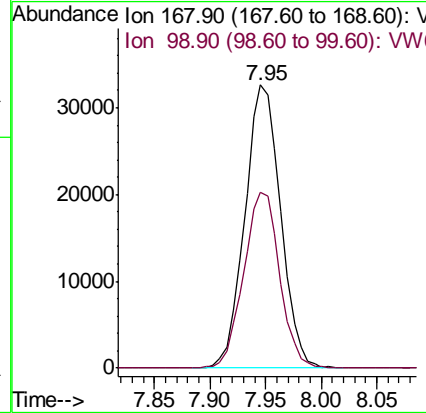
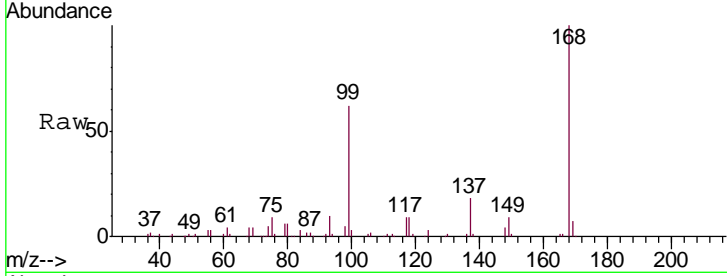




#1  
 Pentafluorobenzene  
 Concen: 50.000 ug/l  
 RT: 7.95 min Scan# 991  
 Delta R.T. -0.00 min  
 Lab File: VW012425.D  
 Acq: 01 Sep 2019 03:39

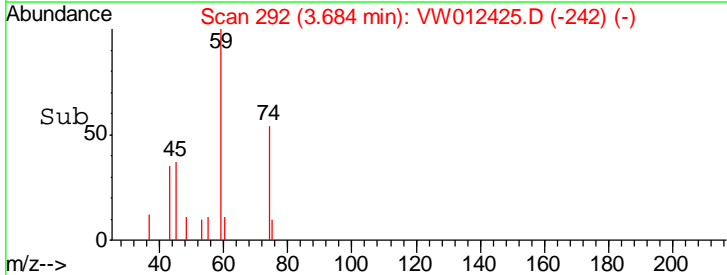
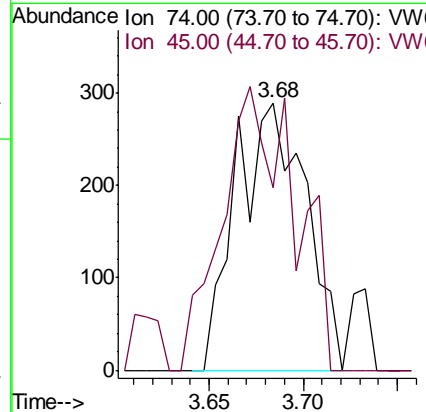
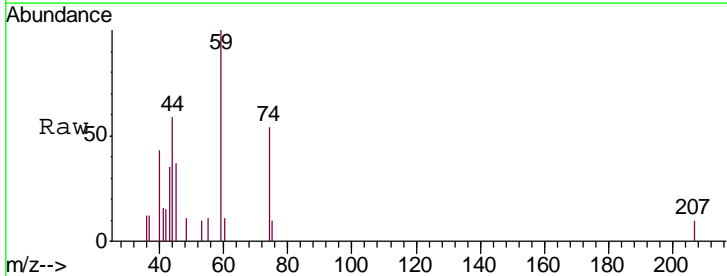
Instrument : MSVOA\_W  
 ClientSampled : T1-S-B2-(2.5)

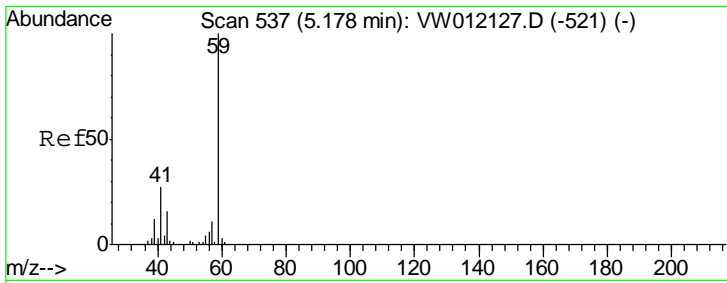
Tgt Ion: 168 Resp: 72854  
 Ion Ratio Lower Upper  
 168 100  
 99 62.1 49.2 73.8



#8  
 Diethyl Ether  
 Concen: 1.838 ug/l  
 RT: 3.68 min Scan# 292  
 Delta R.T. 0.01 min  
 Lab File: VW012425.D  
 Acq: 01 Sep 2019 03:39

Tgt Ion: 74 Resp: 745  
 Ion Ratio Lower Upper  
 74 100  
 45 110.9 59.2 177.6

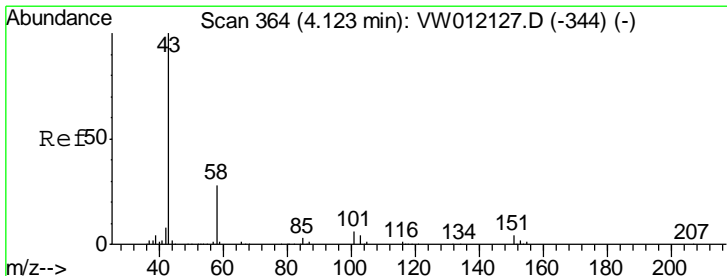
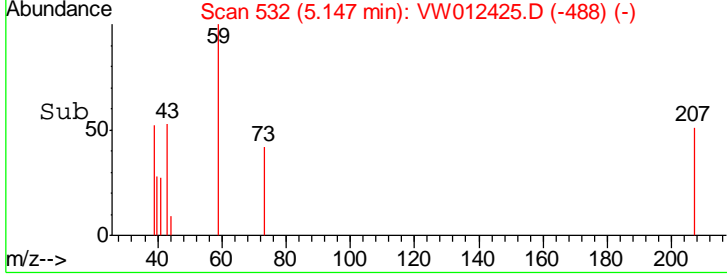
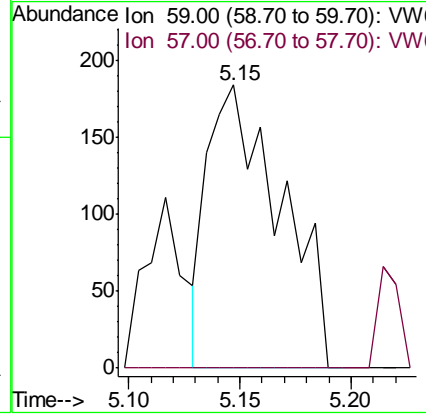
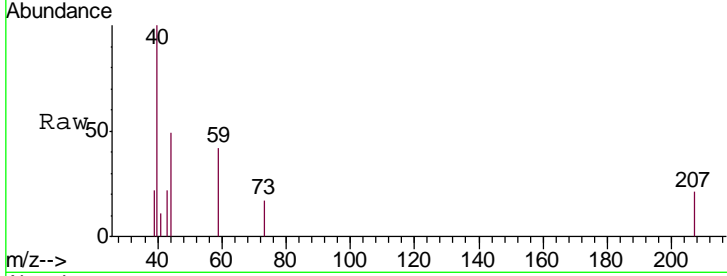




#11  
 Tert butyl alcohol  
 Concen: 8.039 ug/l  
 RT: 5.15 min Scan# 532  
 Delta R.T. -0.03 min  
 Lab File: VW012425.D  
 Acq: 01 Sep 2019 03:39

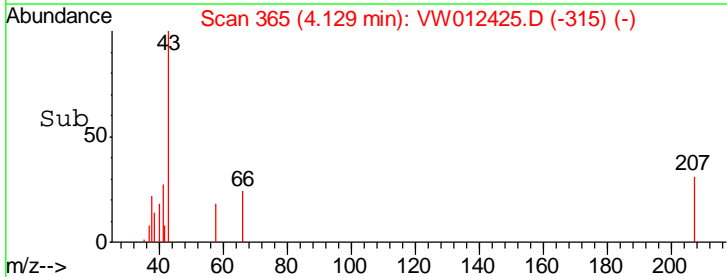
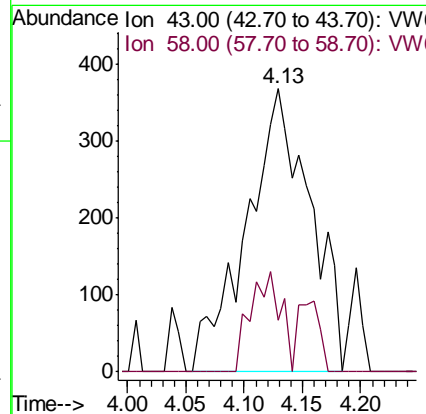
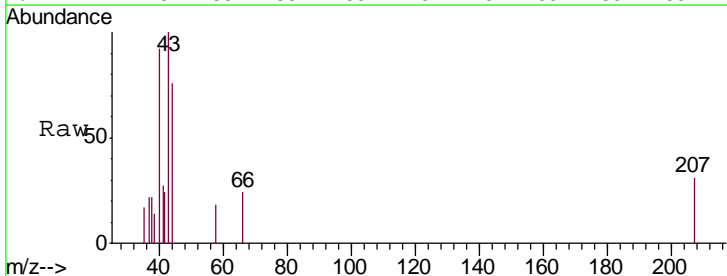
**Instrument :**  
 MSVOA\_W  
**ClientSampled :**  
 T1-S-B2-(2.5)

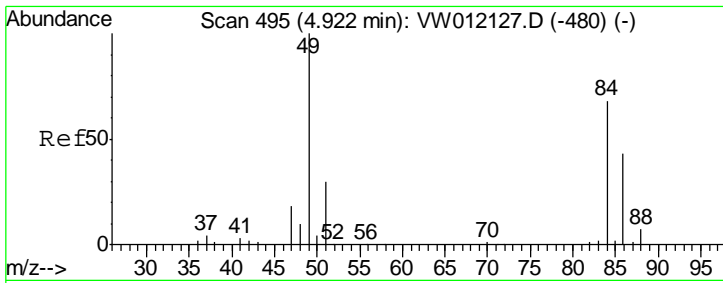
Tgt Ion: 59 Resp: 419  
 Ion Ratio Lower Upper  
 59 100  
 57 0.0 9.0 13.4#



#16  
 Acetone  
 Concen: 6.328 ug/l  
 RT: 4.13 min Scan# 365  
 Delta R.T. 0.01 min  
 Lab File: VW012425.D  
 Acq: 01 Sep 2019 03:39

Tgt Ion: 43 Resp: 1401  
 Ion Ratio Lower Upper  
 43 100  
 58 18.5 22.4 33.6#

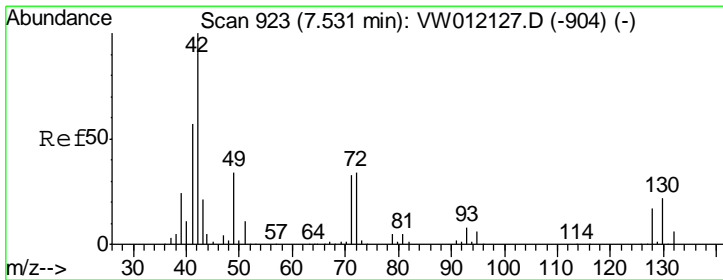
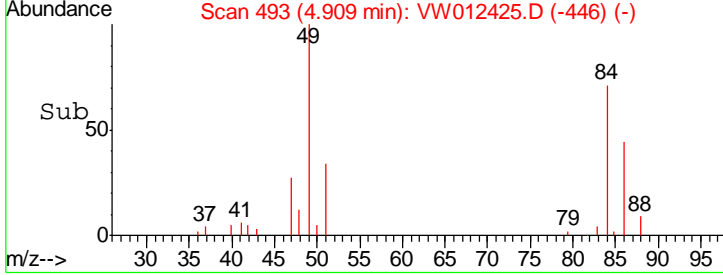
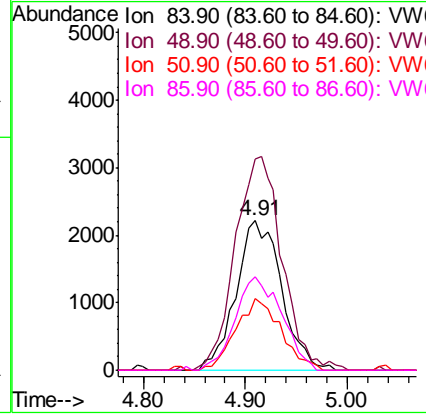
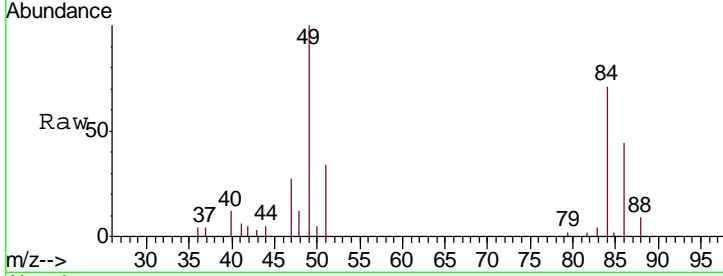




#20  
 Methylene Chloride  
 Concen: 8.219 ug/l  
 RT: 4.91 min Scan# 493  
 Delta R.T. -0.01 min  
 Lab File: VW012425.D  
 Acq: 01 Sep 2019 03:39

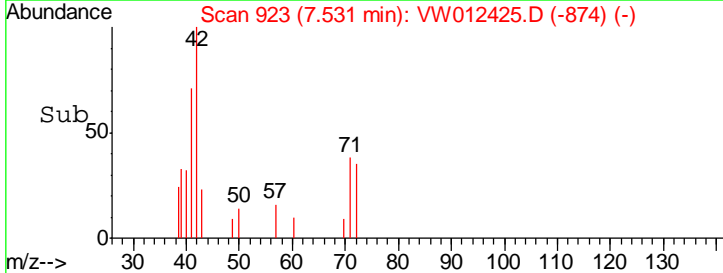
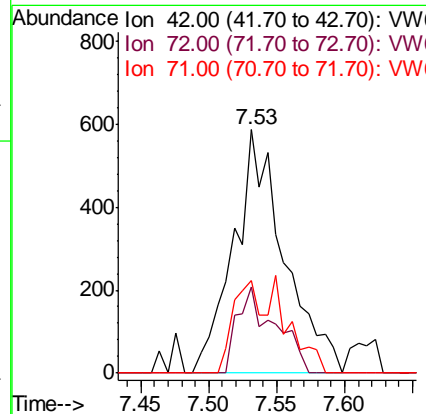
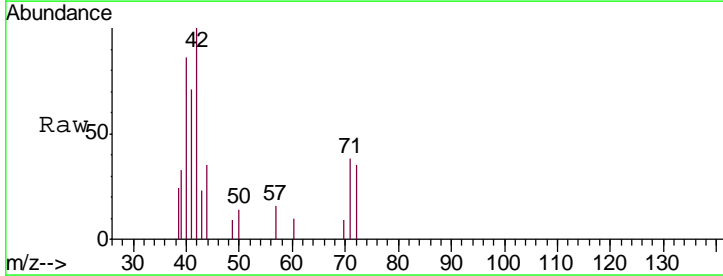
Instrument : MSVOA\_W  
 ClientSampled : T1-S-B2-(2.5)

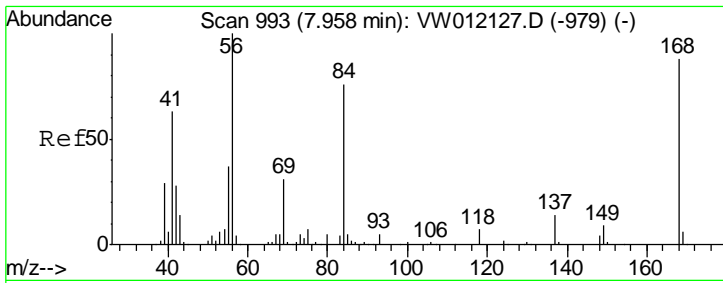
Tgt Ion	Resp	Lower	Upper
84	100		
49	141.4	117.8	176.8
51	48.2	35.6	53.4
86	62.6	51.2	76.8



#29  
 Tetrahydrofuran  
 Concen: 8.394 ug/l  
 RT: 7.53 min Scan# 923  
 Delta R.T. -0.00 min  
 Lab File: VW012425.D  
 Acq: 01 Sep 2019 03:39

Tgt Ion	Resp	Lower	Upper
42	100		
72	26.6	27.3	40.9#
71	22.6	25.5	38.3#

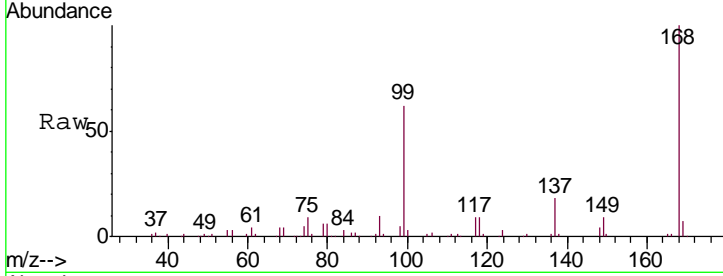




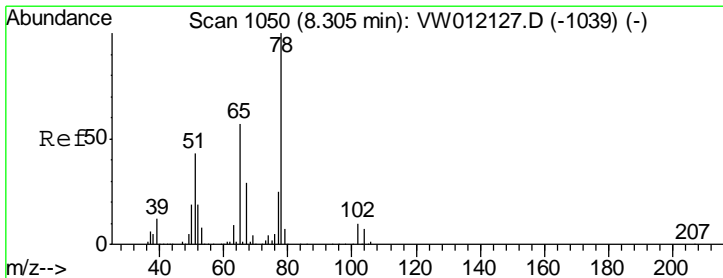
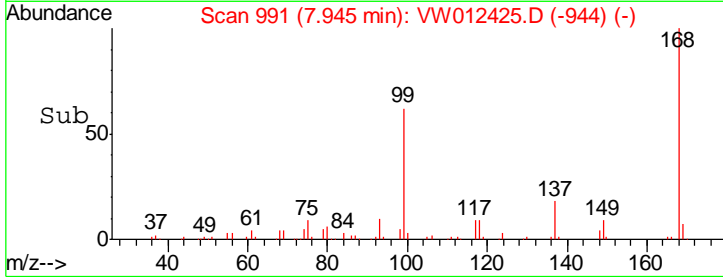
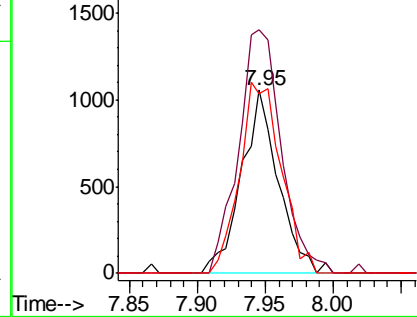
#31  
 Cyclohexane  
 Concen: 1.285 ug/l  
 RT: 7.95 min Scan# 991  
 Delta R.T. -0.01 min  
 Lab File: VW012425.D  
 Acq: 01 Sep 2019 03:39

Instrument :  
 MSVOA\_W  
 ClientSampled :  
 T1-S-B2-(2.5)

Tgt Ion	Resp	Lower	Upper
56	100		
69	133.1	24.9	37.3#
84	98.1	60.6	90.8#

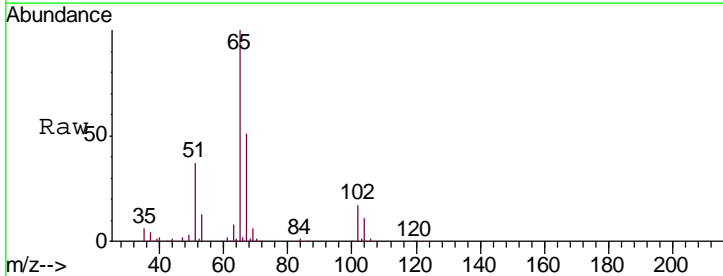


Abundance Ion 56.00 (55.70 to 56.70): VW  
 Ion 69.00 (68.70 to 69.70): VW  
 Ion 84.00 (83.70 to 84.70): VW

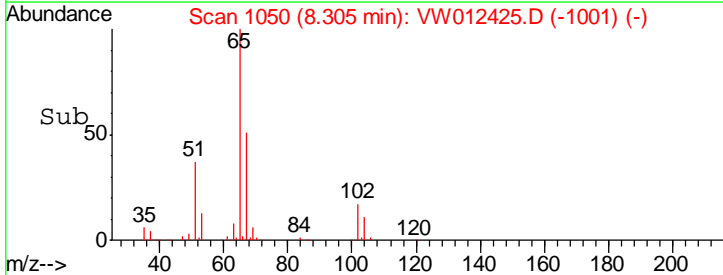
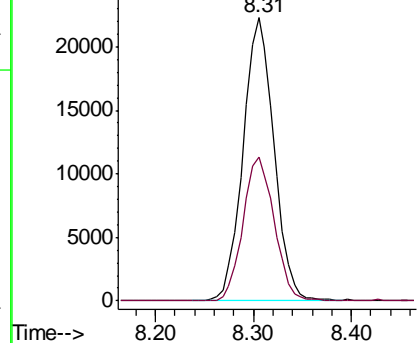


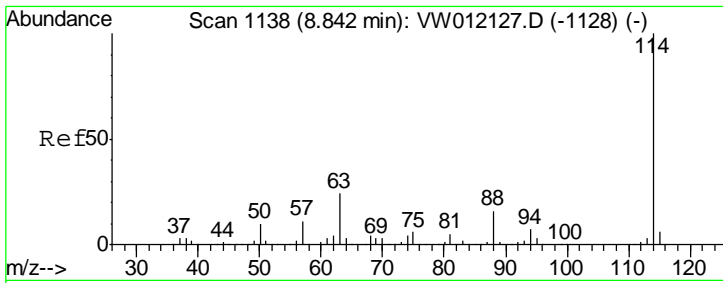
#33  
 1,2-Dichloroethane-d4  
 Concen: 56.323 ug/l  
 RT: 8.31 min Scan# 1050  
 Delta R.T. -0.00 min  
 Lab File: VW012425.D  
 Acq: 01 Sep 2019 03:39

Tgt Ion	Resp	Lower	Upper
65	100		
67	51.2	0.0	102.6



Abundance Ion 64.90 (64.60 to 65.60): VW  
 Ion 66.90 (66.60 to 67.60): VW

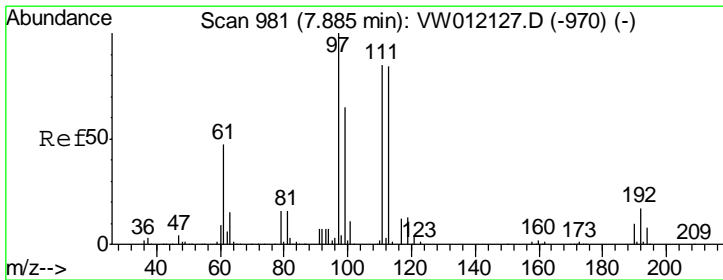
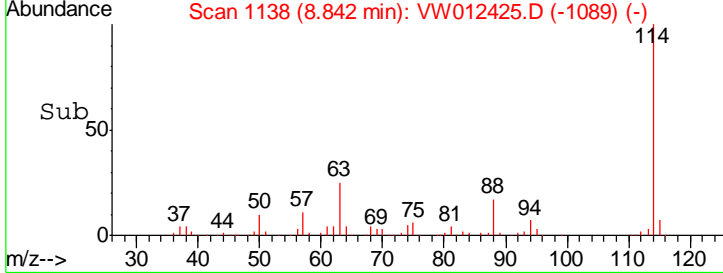
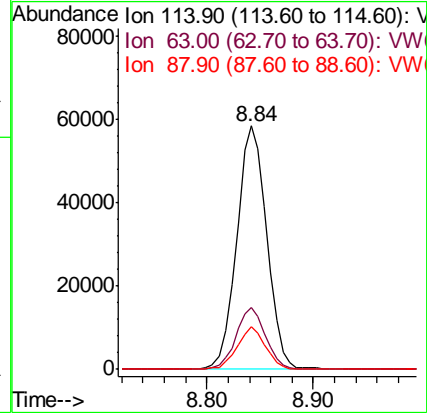
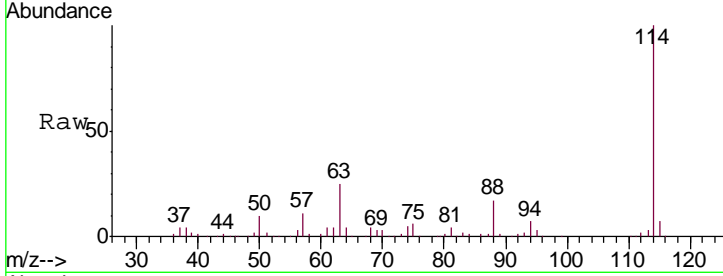




#34  
 1,4-Difluorobenzene  
 Concen: 50.000 ug/l  
 RT: 8.84 min Scan# 1138  
 Delta R.T. -0.00 min  
 Lab File: VW012425.D  
 Acq: 01 Sep 2019 03:39

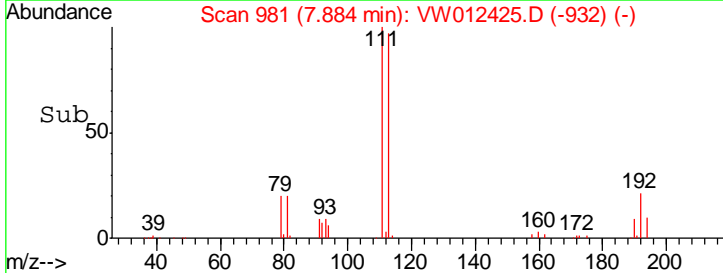
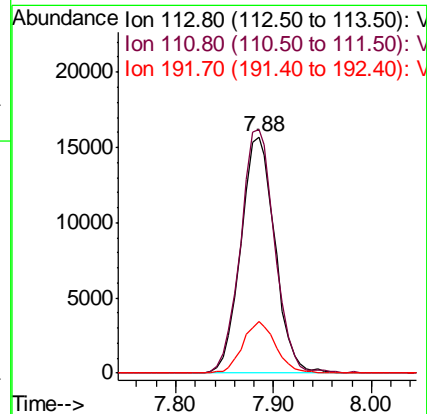
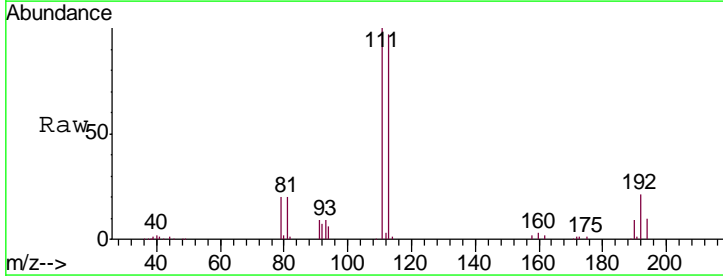
Instrument :  
 MSVOA\_W  
 ClientSampled :  
 T1-S-B2-(2.5)

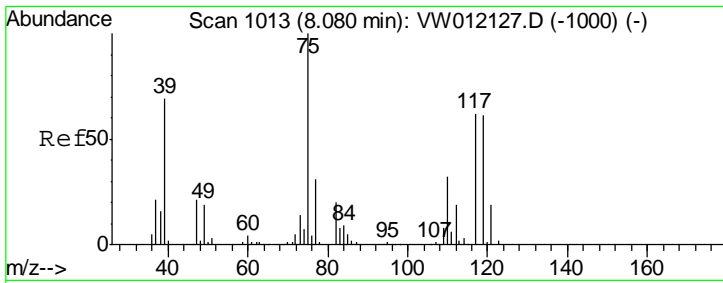
Tgt Ion	Resp	Lower	Upper
114	115555		
63	25.4	0.0	48.6
88	17.3	0.0	32.2



#35  
 Dibromofluoromethane  
 Concen: 54.968 ug/l  
 RT: 7.88 min Scan# 981  
 Delta R.T. -0.00 min  
 Lab File: VW012425.D  
 Acq: 01 Sep 2019 03:39

Tgt Ion	Resp	Lower	Upper
113	37914		
111	103.6	82.7	124.1
192	21.2	16.2	24.2

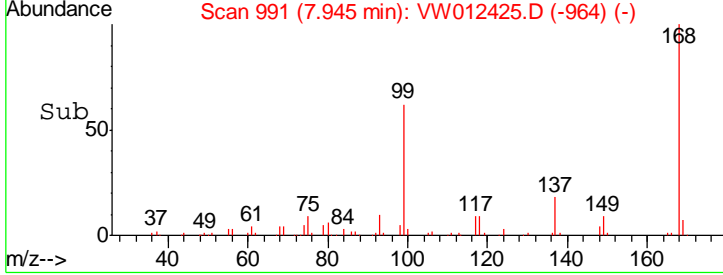
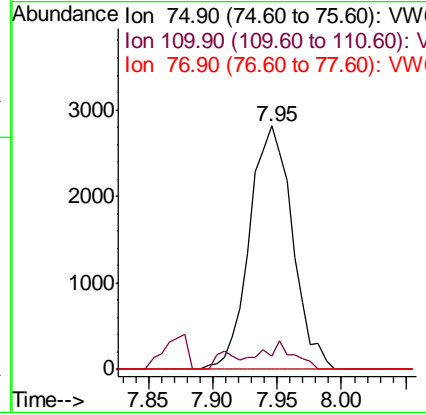
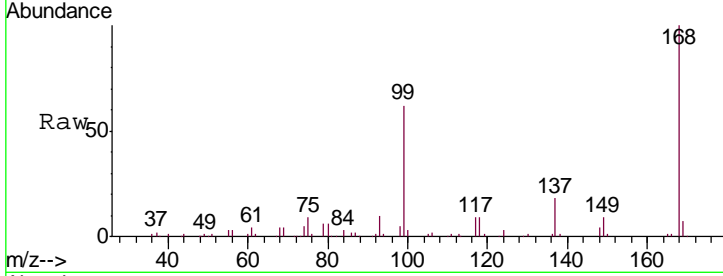




#36  
 1,1-Dichloropropene  
 Concen: 5.434 ug/l  
 RT: 7.95 min Scan# 991  
 Delta R.T. -0.13 min  
 Lab File: VW012425.D  
 Acq: 01 Sep 2019 03:39

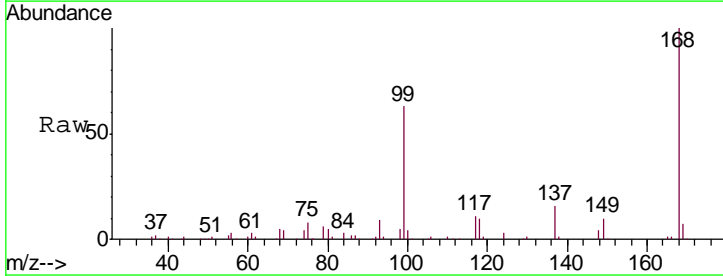
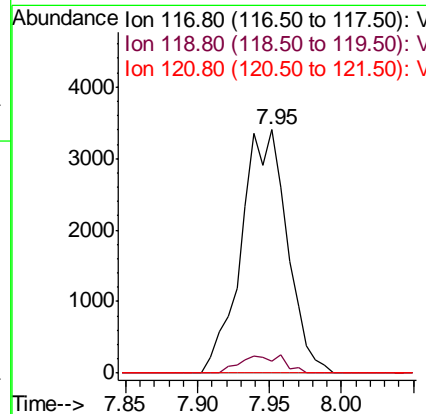
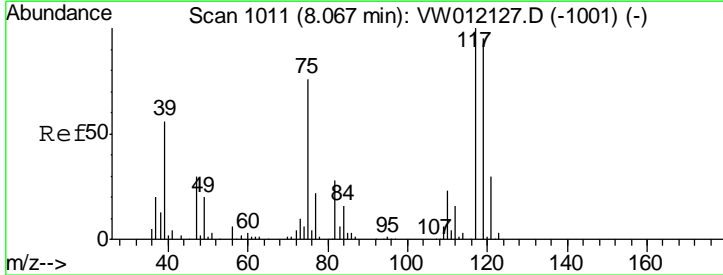
Instrument :  
 MSVOA\_W  
 ClientSampled :  
 T1-S-B2-(2.5)

Tgt Ion	Resp	Lower	Upper
75	100		
110	8.7	15.6	46.8#
77	0.0	24.6	36.8#

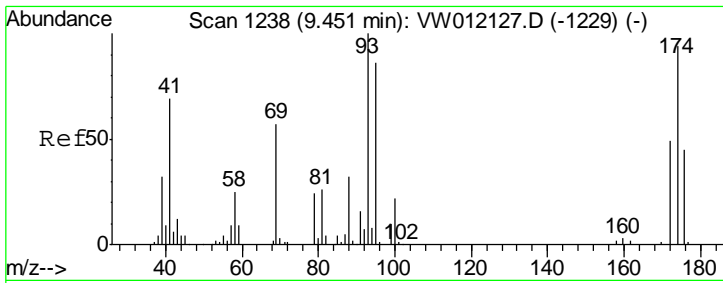


#38  
 Carbon Tetrachloride  
 Concen: 7.272 ug/l  
 RT: 7.95 min Scan# 992  
 Delta R.T. -0.12 min  
 Lab File: VW012425.D  
 Acq: 01 Sep 2019 03:39

Tgt Ion	Resp	Lower	Upper
117	100		
119	5.0	76.2	114.2#
121	0.0	23.8	35.8#



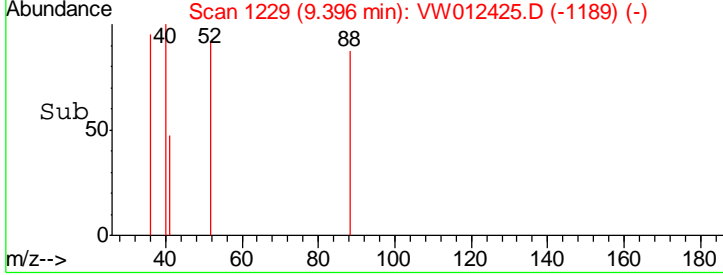
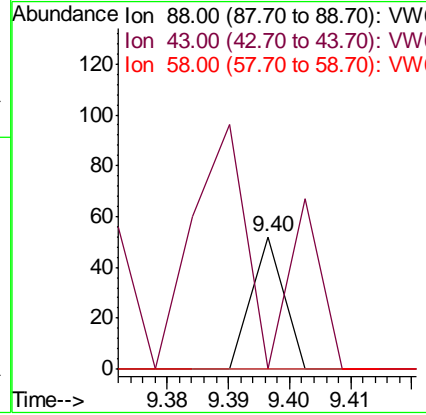
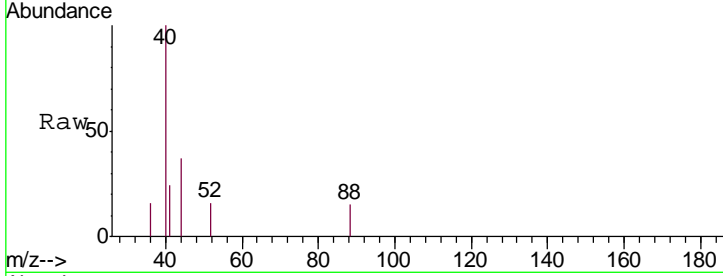




#49  
 1,4-Dioxane  
 Concen: 3.179 ug/l  
 RT: 9.40 min Scan# 1229  
 Delta R.T. -0.05 min  
 Lab File: VW012425.D  
 Acq: 01 Sep 2019 03:39

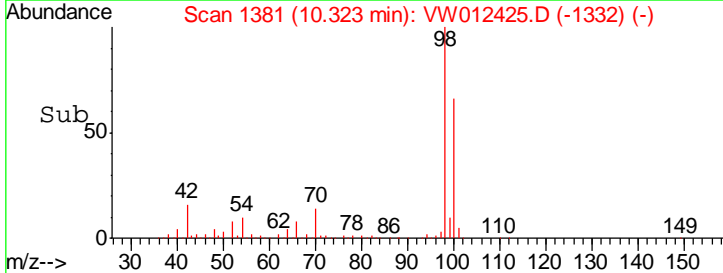
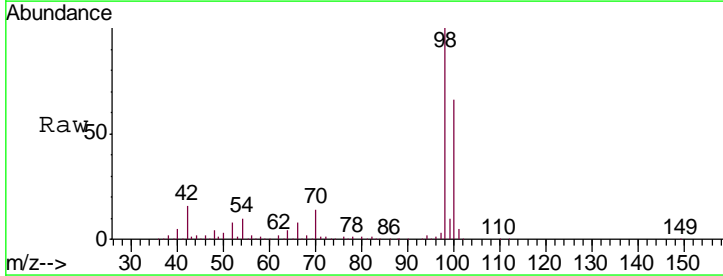
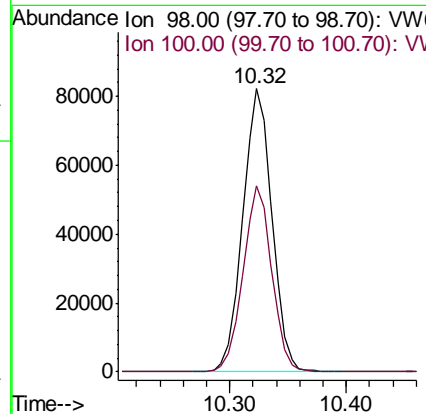
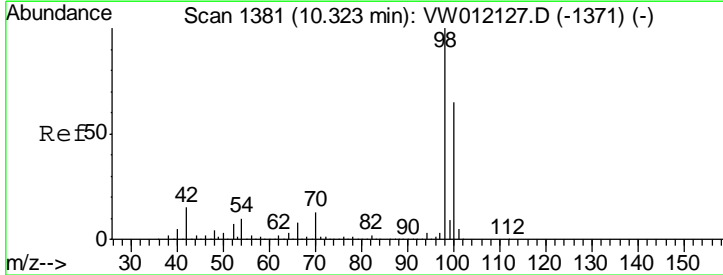
**Instrument :**  
 MSVOA\_W  
**ClientSampled :**  
 T1-S-B2-(2.5)

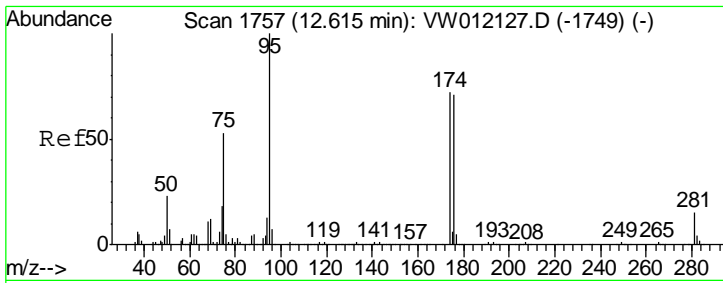
Tgt Ion	Resp	Lower	Upper
88	100		
43	431.6	32.9	49.3#
58	0.0	71.0	106.4#



#50  
 Toluene-d8  
 Concen: 51.449 ug/l  
 RT: 10.32 min Scan# 1381  
 Delta R.T. -0.00 min  
 Lab File: VW012425.D  
 Acq: 01 Sep 2019 03:39

Tgt Ion	Resp	Lower	Upper
98	100		
100	64.6	52.4	78.6

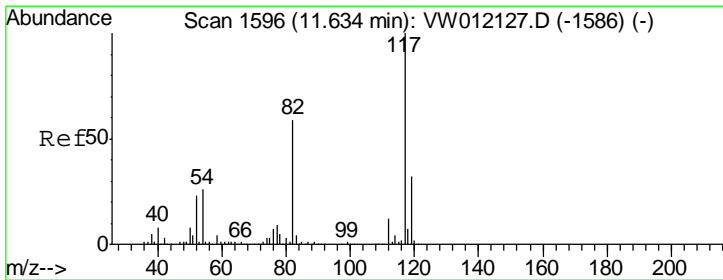
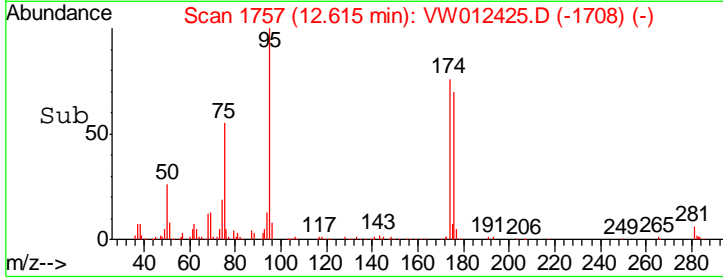
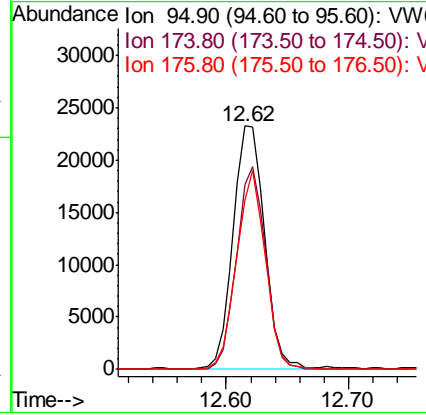
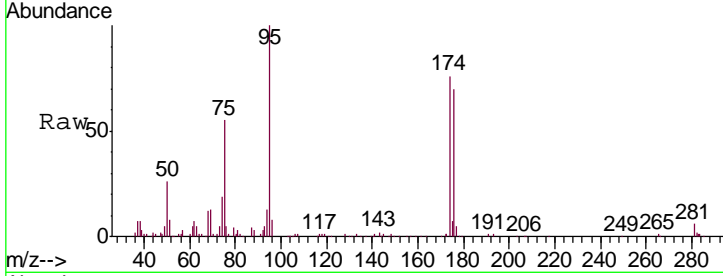




#62  
 4-Bromofluorobenzene  
 Concen: 41.801 ug/l  
 RT: 12.62 min Scan# 1757  
 Delta R.T. -0.00 min  
 Lab File: VW012425.D  
 Acq: 01 Sep 2019 03:39

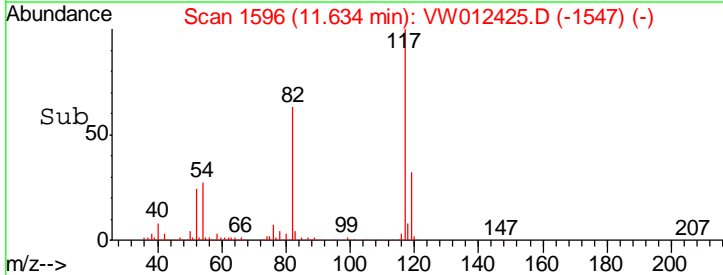
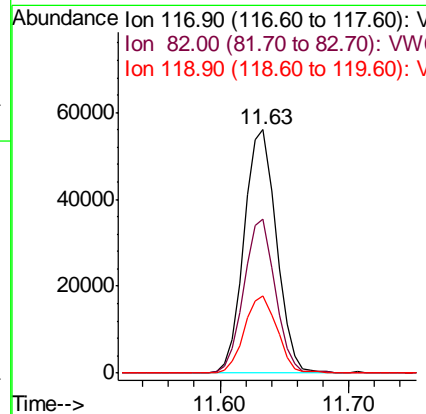
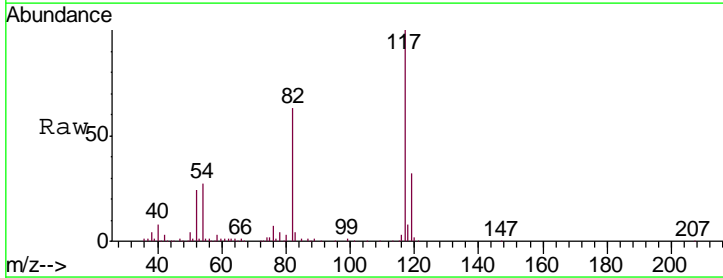
Instrument :  
 MSVOA\_W  
 ClientSampleId :  
 T1-S-B2-(2.5)

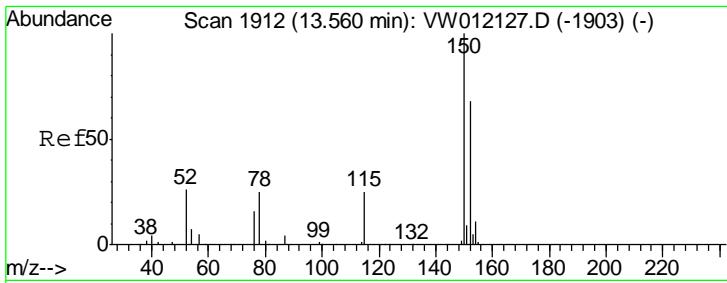
Tgt Ion	Resp	Lower	Upper
95	41209		
174	77.5	0.0	150.8
176	74.5	0.0	148.6



#63  
 Chlorobenzene-d5  
 Concen: 50.000 ug/l  
 RT: 11.63 min Scan# 1596  
 Delta R.T. -0.00 min  
 Lab File: VW012425.D  
 Acq: 01 Sep 2019 03:39

Tgt Ion	Resp	Lower	Upper
117	97219		
82	63.5	47.4	71.2
119	31.6	25.4	38.2

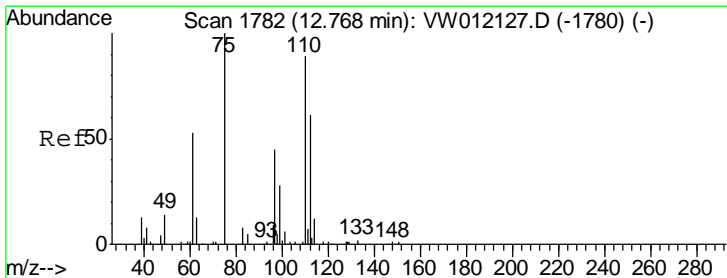
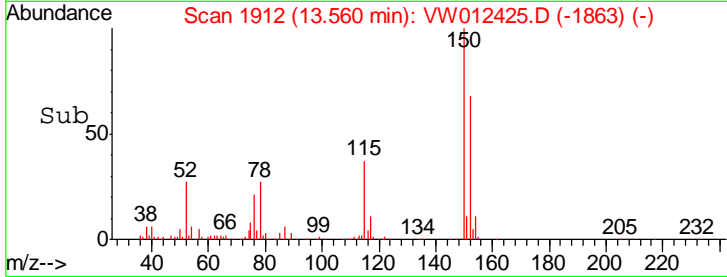
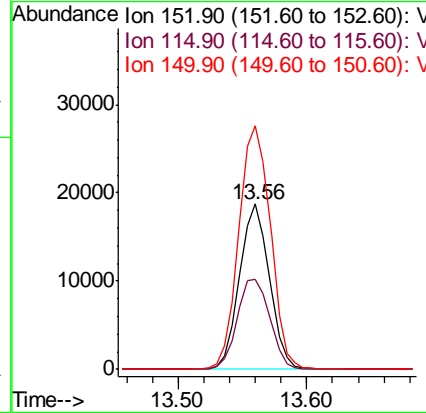
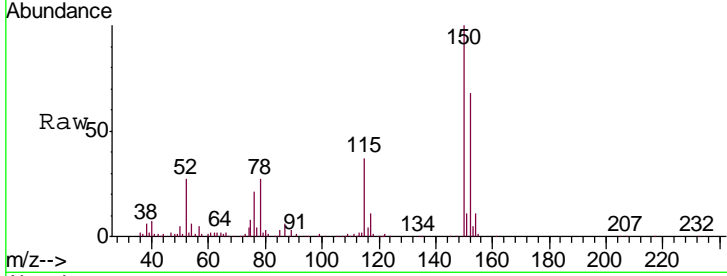




#72  
 1,4-Dichlorobenzene-d4  
 Concen: 50.000 ug/l  
 RT: 13.56 min Scan# 1912  
 Delta R.T. -0.00 min  
 Lab File: VW012425.D  
 Acq: 01 Sep 2019 03:39

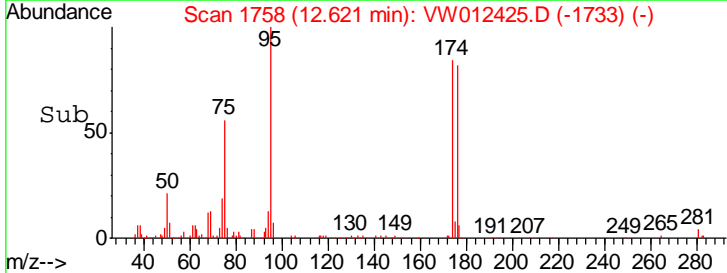
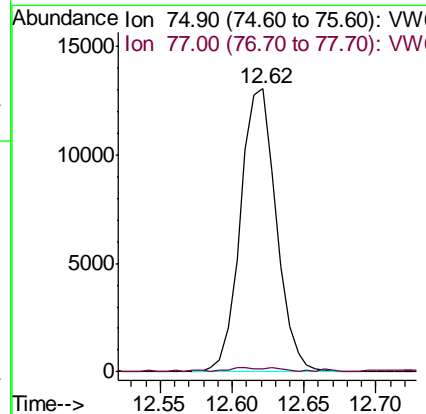
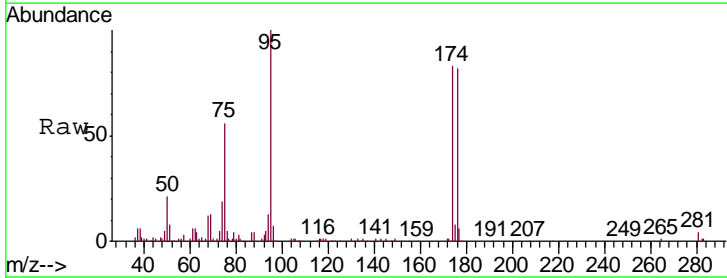
Instrument :  
 MSVOA\_W  
 ClientSampled :  
 T1-S-B2-(2.5)

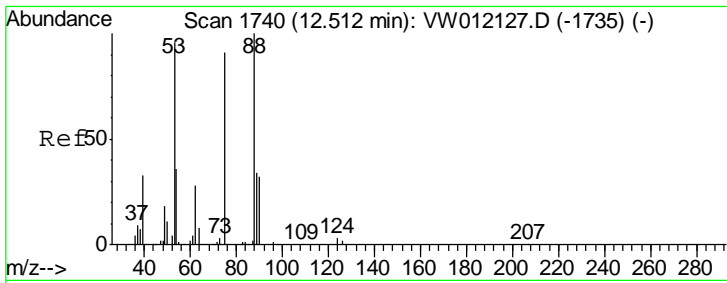
Tgt Ion	Resp	Lower	Upper
152	100		
115	59.7	30.1	90.3
150	156.2	0.0	345.8



#76  
 1,2,3-Trichloropropane  
 Concen: 76.650 ug/l  
 RT: 12.62 min Scan# 1758  
 Delta R.T. -0.15 min  
 Lab File: VW012425.D  
 Acq: 01 Sep 2019 03:39

Tgt Ion	Resp	Lower	Upper
75	100		
77	1.3	0.0	0.0#

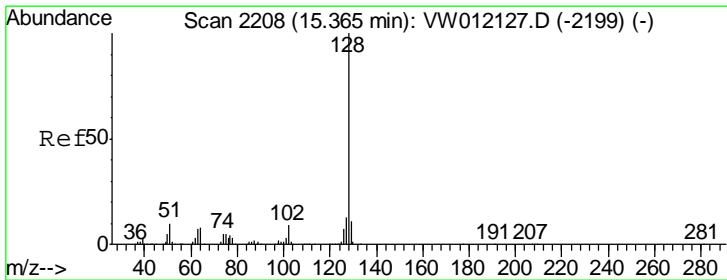
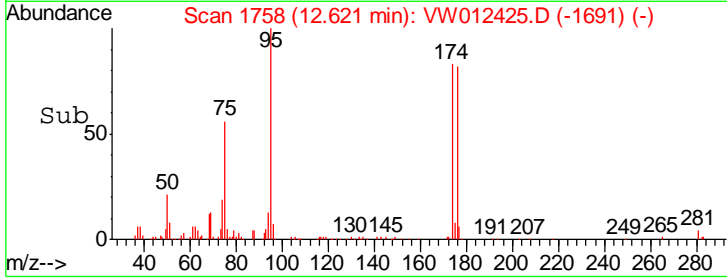
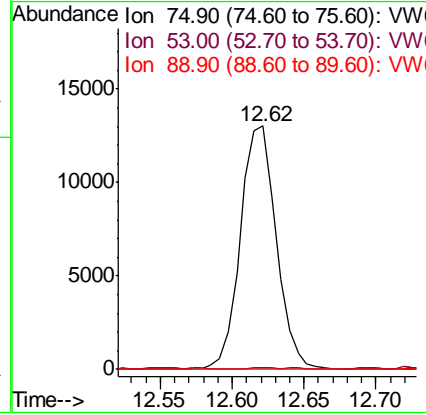
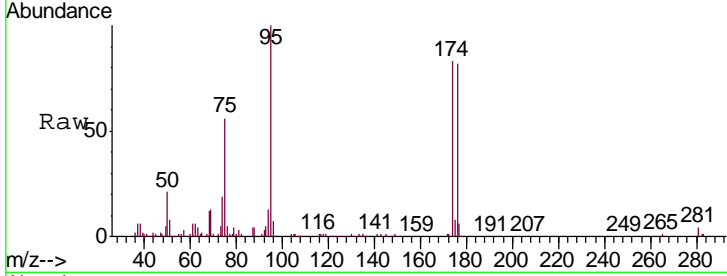




#81  
 trans-1,4-Dichloro-2-butene  
 Concen: 168.058 ug/l  
 RT: 12.62 min Scan# 1758  
 Delta R.T. 0.11 min  
 Lab File: VW012425.D  
 Acq: 01 Sep 2019 03:39

Instrument :  
 MSVOA\_W  
 ClientSampled :  
 T1-S-B2-(2.5)

Tgt Ion	Resp	Lower	Upper
75	100		
53	0.4	89.4	134.0#
89	0.0	34.5	51.7#



#95  
 Naphthalene  
 Concen: 4.414 ug/l  
 RT: 15.36 min Scan# 2207  
 Delta R.T. -0.01 min  
 Lab File: VW012425.D  
 Acq: 01 Sep 2019 03:39

Tgt Ion	Resp	Lower	Upper
128	100		
127	0.0	10.7	16.1#
129	0.0	8.7	13.1#

