

Data Path : Z:\VOASRV\HPCHEM1\MSVOA_W\DATA\VW090119\
 Data File : VW012452.D
 Acq On : 01 Sep 2019 16:57
 Operator : SY/VA
 Sample : K4516-03
 Misc : 6.07G/5ML/MSVOA_W/SOIL
 ALS Vial : 16 Sample Multiplier: 1

Instrument :
 MSVOA_W
 ClientSampled :
 T1-S-B3-(0)

Quant Time: Sep 02 07:19:43 2019
 Quant Method : Z:\VOASRV\HPCHEM1\MSVOA_W\METHOD\82W082319S.M
 Quant Title : SW846 8260
 QLast Update : Mon Aug 26 07:18:31 2019
 Response via : Initial Calibration

Internal Standards	R.T.	QIon	Response	Conc	Units	Dev(Min)
1) Pentafluorobenzene	7.95	168	194408	50.00	ug/l	0.00
34) 1,4-Difluorobenzene	8.84	114	320270	50.00	ug/l	0.00
63) Chlorobenzene-d5	11.63	117	267744	50.00	ug/l	0.00
72) 1,4-Dichlorobenzene-d4	13.55	152	103256	50.00	ug/l	0.00

System Monitoring Compounds	R.T.	QIon	Response	Conc	Units	Dev(Min)
33) 1,2-Dichloroethane-d4	8.31	65	131607	56.95	ug/l	0.00
Spiked Amount				50.000		
Recovery				=	113.90%	
35) Dibromofluoromethane	7.88	113	100809	52.73	ug/l	0.00
Spiked Amount				50.000		
Recovery				=	105.46%	
50) Toluene-d8	10.32	98	398564	51.42	ug/l	0.00
Spiked Amount				50.000		
Recovery				=	102.84%	
62) 4-Bromofluorobenzene	12.62	95	119591	43.77	ug/l	0.00
Spiked Amount				50.000		
Recovery				=	87.54%	

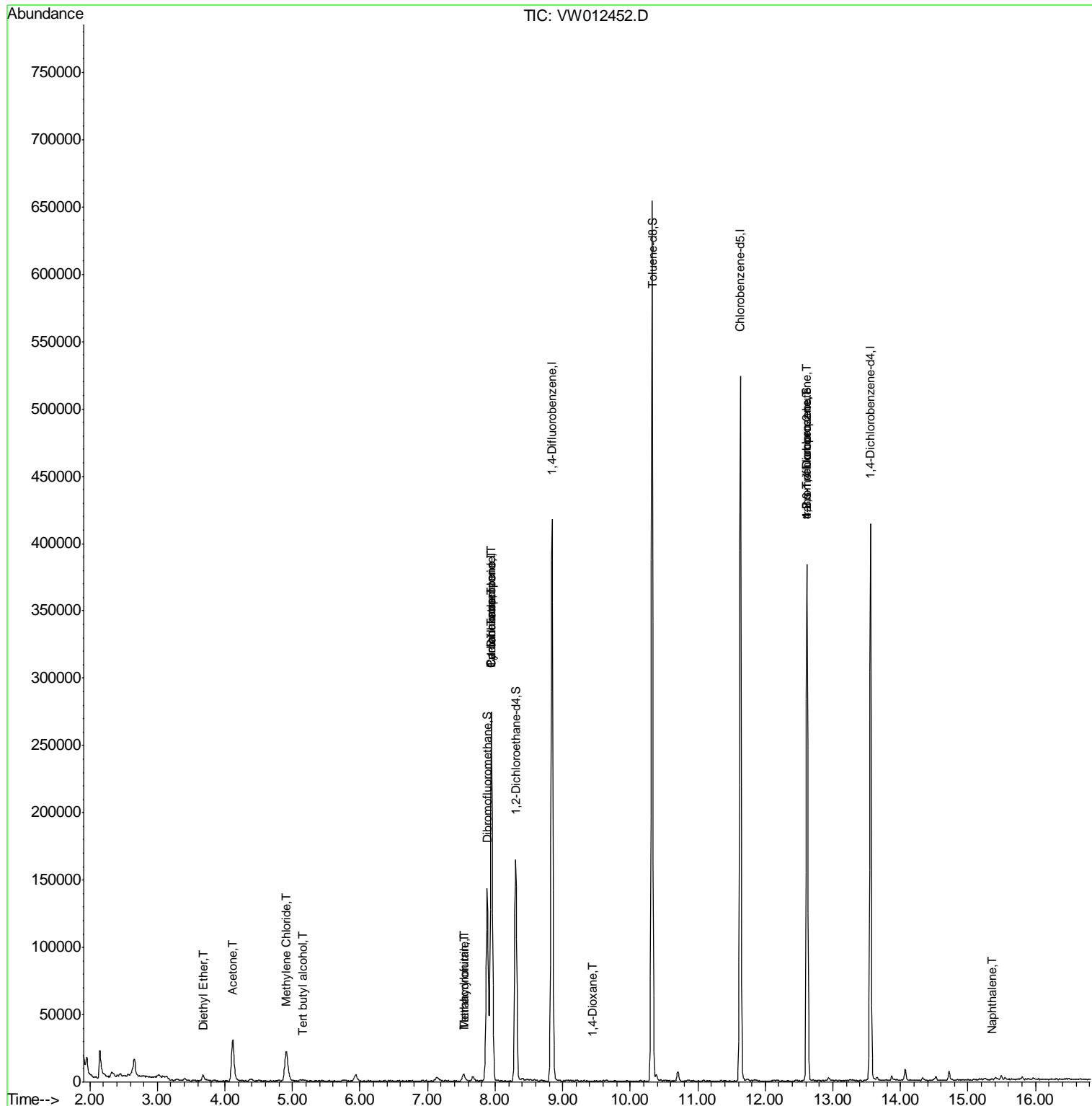
Target Compounds	R.T.	QIon	Response	Conc	Units	Qvalue
8) Diethyl Ether	3.67	74	1913	1.768	ug/l	93
11) Tert butyl alcohol	5.16	59	919	6.608	ug/l #	78
16) Acetone	4.12	43	55984	94.768	ug/l	95
20) Methylene Chloride	4.91	84	15297	6.850	ug/l	95
29) Tetrahydrofuran	7.54	42	4604	9.559	ug/l	99
31) Cyclohexane	7.94	56	5156	1.239	ug/l #	8
36) 1,1-Dichloropropene	7.95	75	16477	4.979	ug/l #	52
38) Carbon Tetrachloride	7.95	117	20276	7.078	ug/l #	18
41) Methacrylonitrile	7.54	41	3097	2.905	ug/l #	54
49) 1,4-Dioxane	9.44	88	22	1.328	ug/l #	1
76) 1,2,3-Trichloropropane	12.62	75	65990	65.620	ug/l #	100
81) trans-1,4-Dichloro-2-buten	12.62	75	65990	143.874	ug/l #	6
95) Naphthalene	15.36	128	104	4.345	ug/l #	69

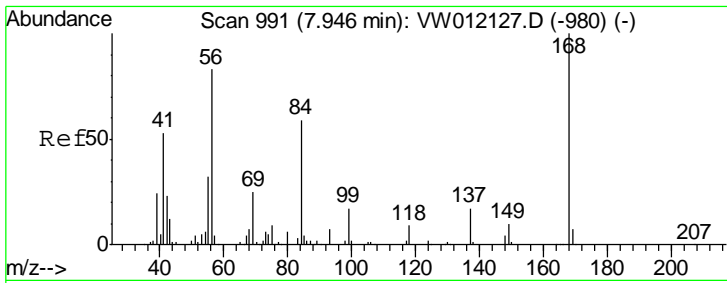
(#) = qualifier out of range (m) = manual integration (+) = signals summed

Data Path : Z:\VOASRV\HPCHEM1\MSVOA_W\DATA\VW090119\
 Data File : VW012452.D
 Acq On : 01 Sep 2019 16:57
 Operator : SY/VA
 Sample : K4516-03
 Misc : 6.07G/5ML/MSVOA_W/SOIL
 ALS Vial : 16 Sample Multiplier: 1

Instrument :
 MSVOA_W
 ClientSampleId :
 T1-S-B3-(0)

Quant Time: Sep 02 07:19:43 2019
 Quant Method : Z:\VOASRV\HPCHEM1\MSVOA_W\METHOD\82W082319S.M
 Quant Title : SW846 8260
 QLast Update : Mon Aug 26 07:18:31 2019
 Response via : Initial Calibration

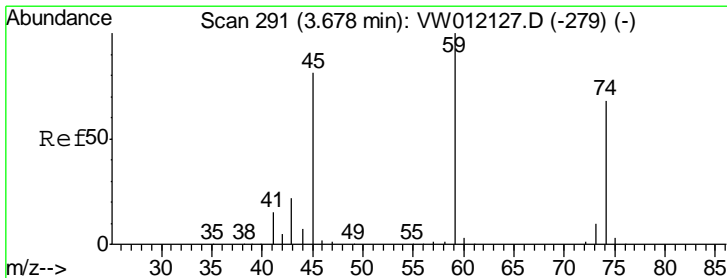
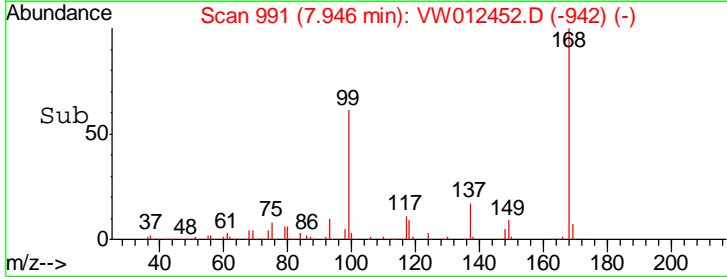
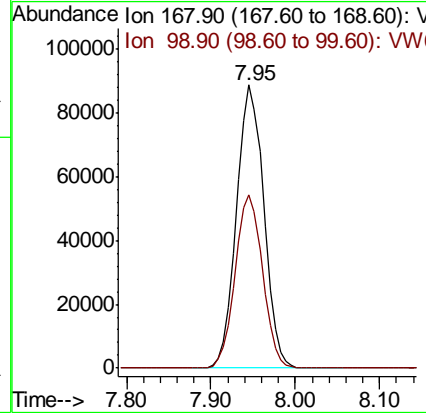
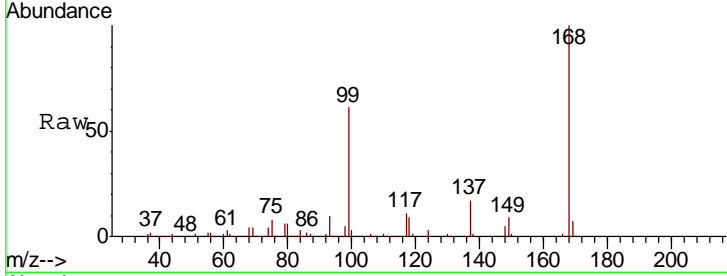




#1
 Pentafluorobenzene
 Concen: 50.000 ug/l
 RT: 7.95 min Scan# 991
 Delta R.T. 0.00 min
 Lab File: VW012452.D
 Acq: 01 Sep 2019 16:57

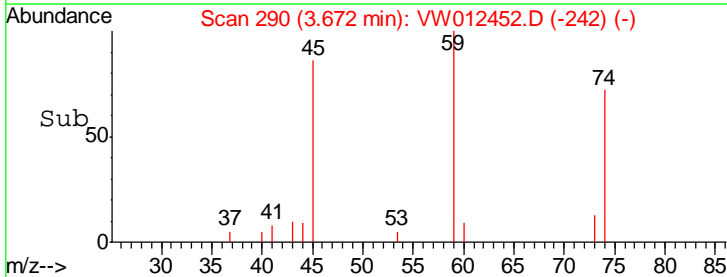
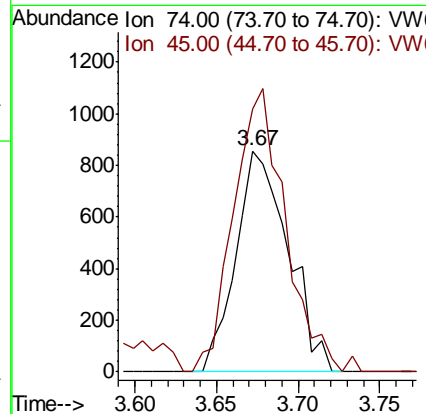
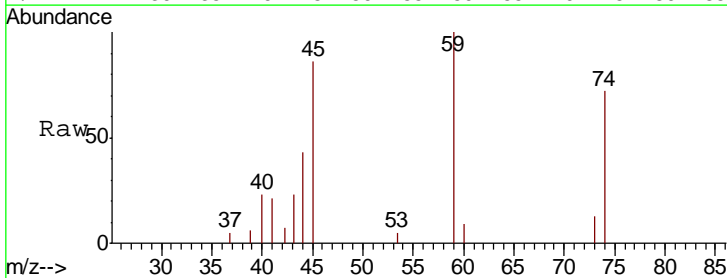
Instrument :
 MSVOA_W
 ClientSampled :
 T1-S-B3-(0)

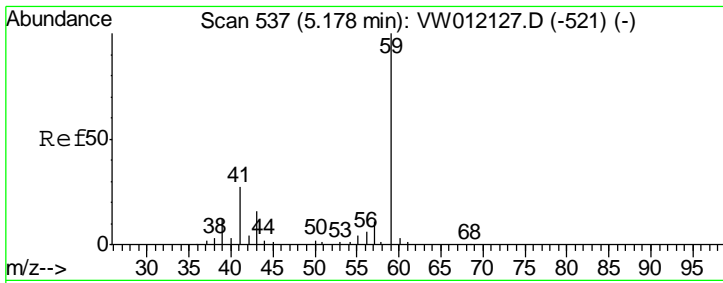
Tgt Ion: 168 Resp: 194408
 Ion Ratio Lower Upper
 168 100
 99 61.4 49.2 73.8



#8
 Diethyl Ether
 Concen: 1.768 ug/l
 RT: 3.67 min Scan# 290
 Delta R.T. -0.01 min
 Lab File: VW012452.D
 Acq: 01 Sep 2019 16:57

Tgt Ion: 74 Resp: 1913
 Ion Ratio Lower Upper
 74 100
 45 126.3 59.2 177.6

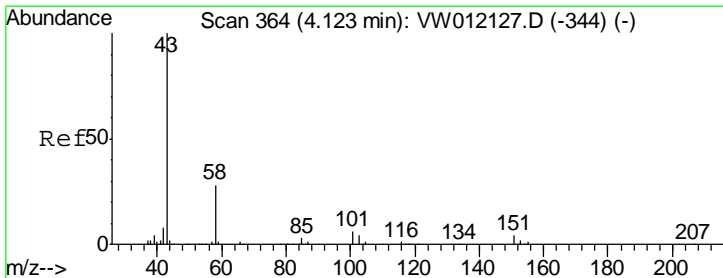
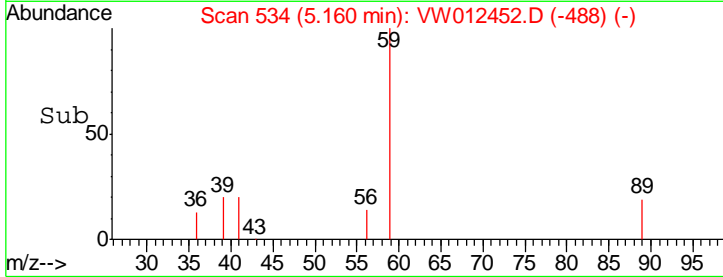
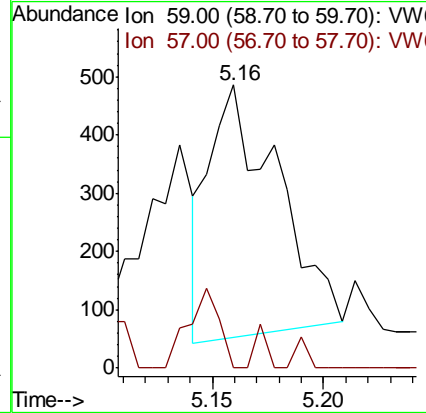
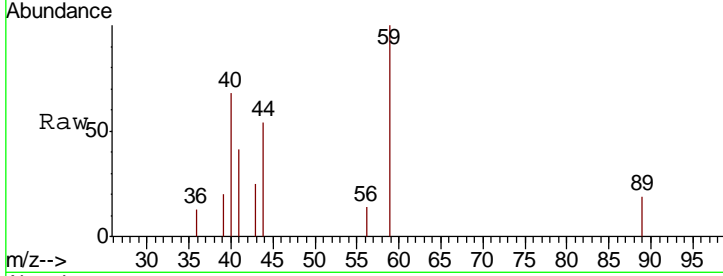




#11
 Tert butyl alcohol
 Concen: 6.608 ug/l
 RT: 5.16 min Scan# 534
 Delta R.T. -0.02 min
 Lab File: VW012452.D
 Acq: 01 Sep 2019 16:57

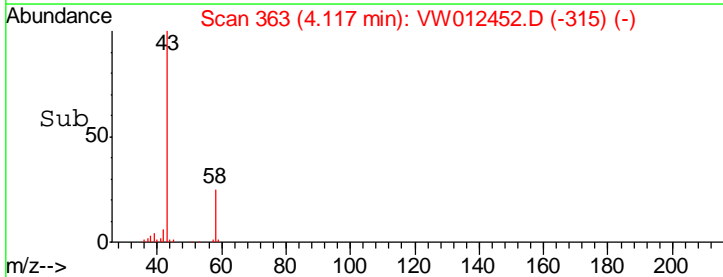
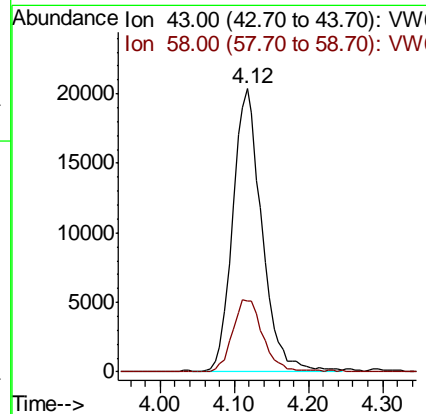
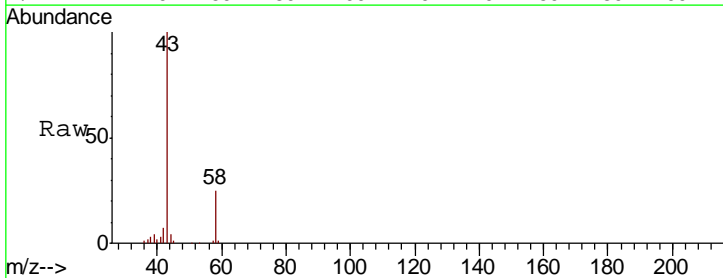
Instrument :
 MSVOA_W
 ClientSampled :
 T1-S-B3-(0)

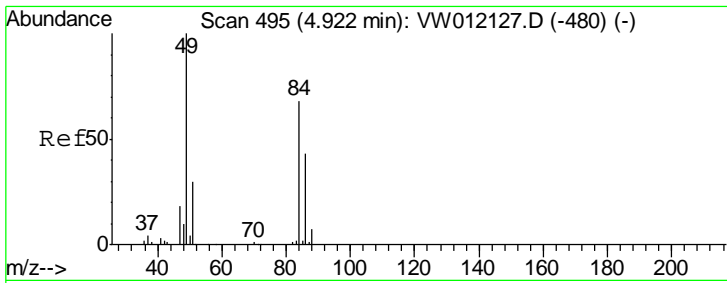
Tgt Ion: 59 Resp: 919
 Ion Ratio Lower Upper
 59 100
 57 2.9 9.0 13.4#



#16
 Acetone
 Concen: 94.768 ug/l
 RT: 4.12 min Scan# 363
 Delta R.T. -0.01 min
 Lab File: VW012452.D
 Acq: 01 Sep 2019 16:57

Tgt Ion: 43 Resp: 55984
 Ion Ratio Lower Upper
 43 100
 58 25.3 22.4 33.6

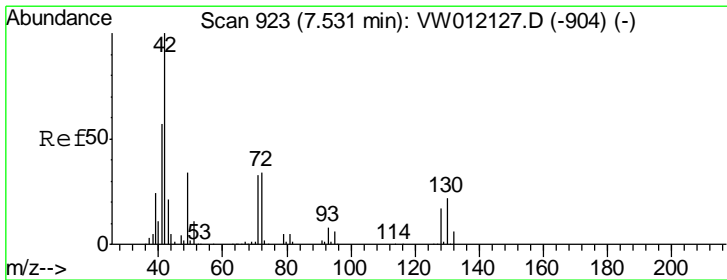
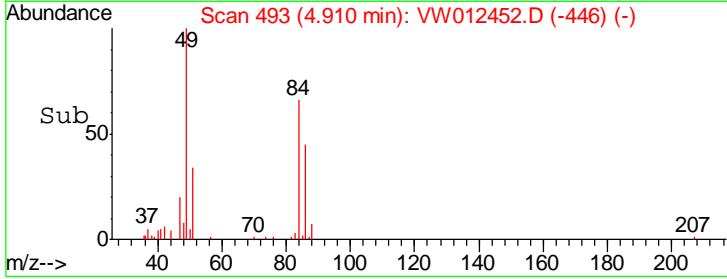
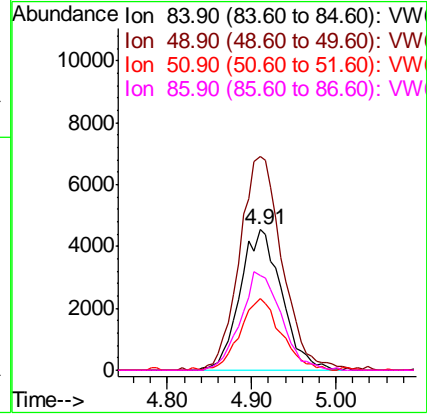
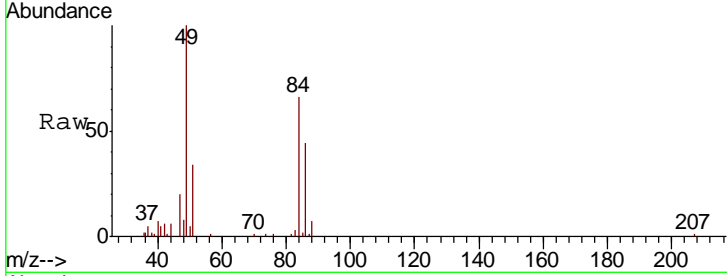




#20
 Methylene Chloride
 Concen: 6.850 ug/l
 RT: 4.91 min Scan# 493
 Delta R.T. -0.01 min
 Lab File: VW012452.D
 Acq: 01 Sep 2019 16:57

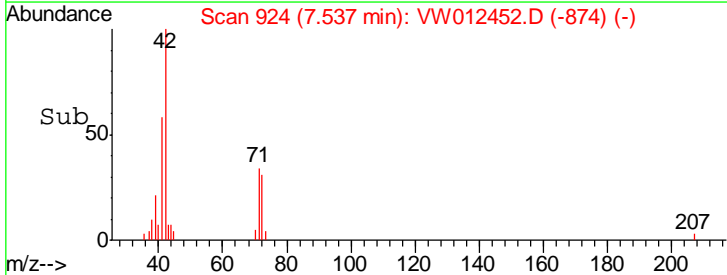
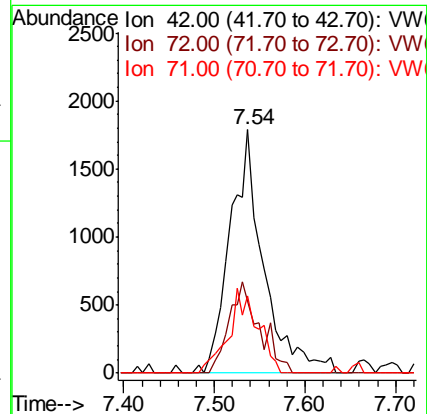
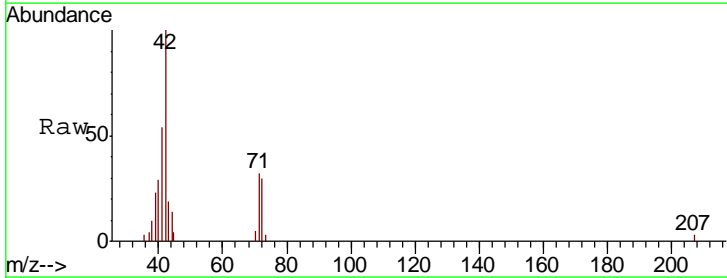
Instrument :
 MSVOA_W
 ClientSampled :
 T1-S-B3-(0)

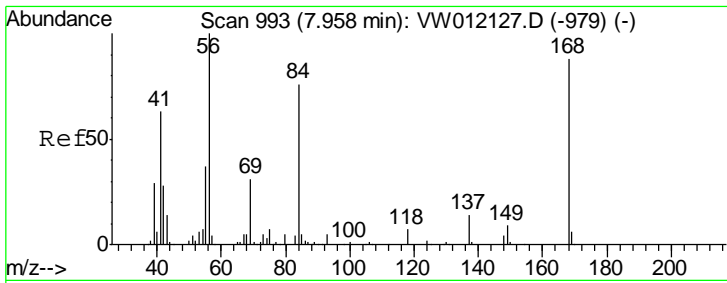
Tgt Ion	Resp	Lower	Upper
84	15297		
Ion Ratio			
84	100		
49	152.3	117.8	176.8
51	49.8	35.6	53.4
86	67.7	51.2	76.8



#29
 Tetrahydrofuran
 Concen: 9.559 ug/l
 RT: 7.54 min Scan# 924
 Delta R.T. 0.01 min
 Lab File: VW012452.D
 Acq: 01 Sep 2019 16:57

Tgt Ion	Resp	Lower	Upper
42	4604		
Ion Ratio			
42	100		
72	34.1	27.3	40.9
71	30.6	25.5	38.3

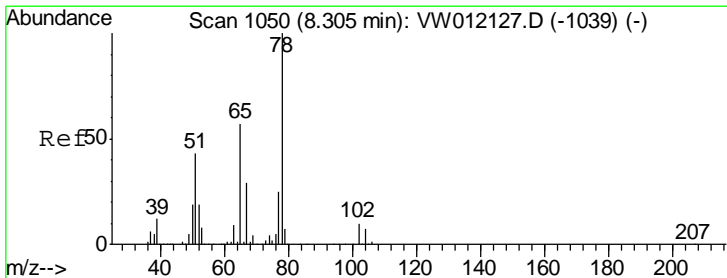
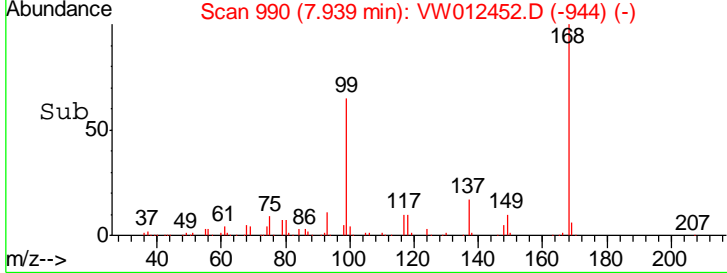
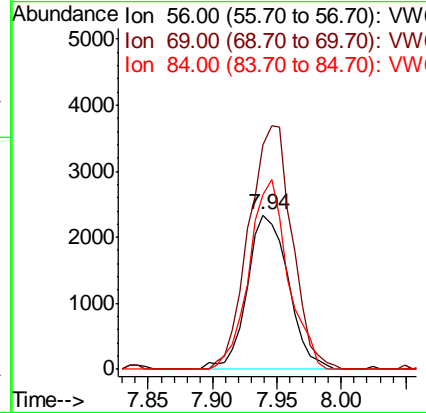
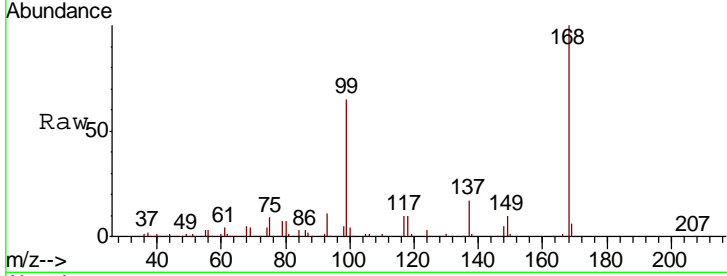




#31
 Cyclohexane
 Concen: 1.239 ug/l
 RT: 7.94 min Scan# 990
 Delta R.T. -0.02 min
 Lab File: VW012452.D
 Acq: 01 Sep 2019 16:57

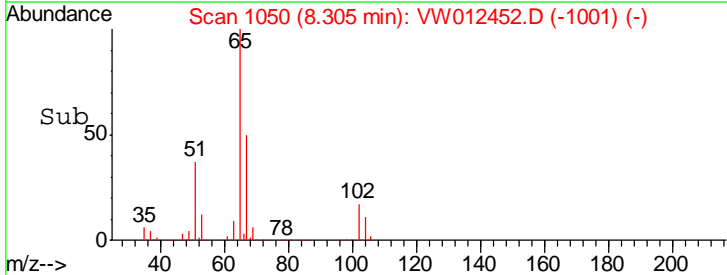
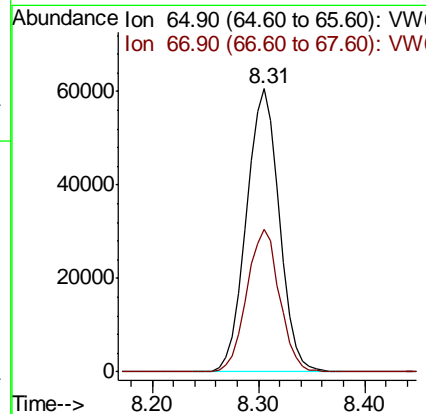
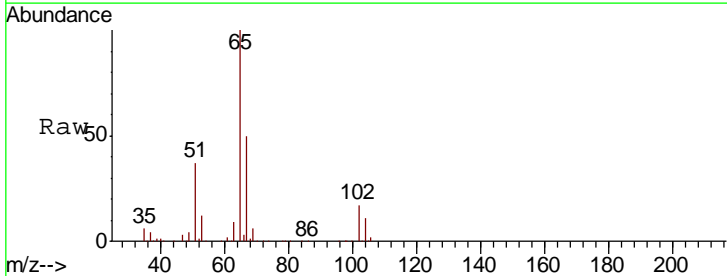
Instrument :
 MSVOA_W
ClientSampled :
 T1-S-B3-(0)

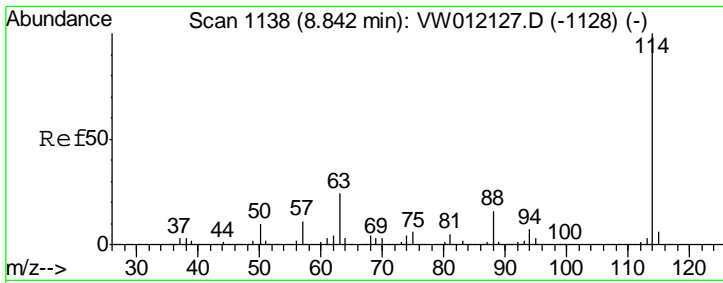
Tgt Ion	Resp	Lower	Upper
56	100		
69	146.1	24.9	37.3#
84	113.2	60.6	90.8#



#33
 1,2-Dichloroethane-d4
 Concen: 56.947 ug/l
 RT: 8.31 min Scan# 1050
 Delta R.T. 0.00 min
 Lab File: VW012452.D
 Acq: 01 Sep 2019 16:57

Tgt Ion	Resp	Lower	Upper
65	100		
67	50.2	0.0	102.6

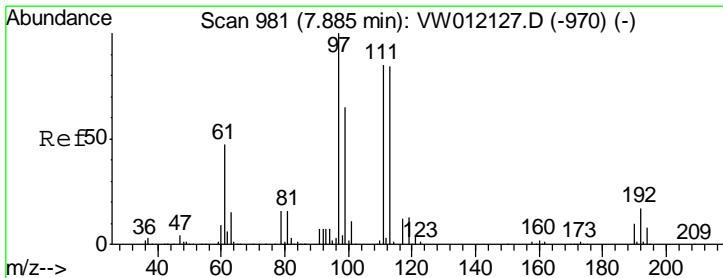
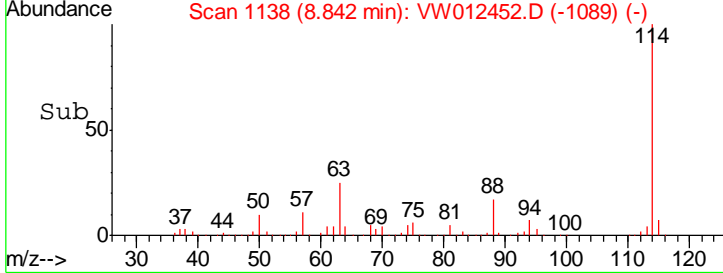
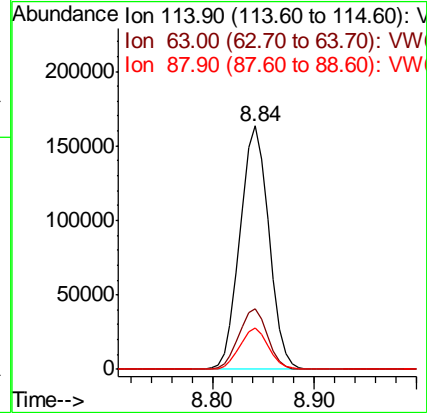
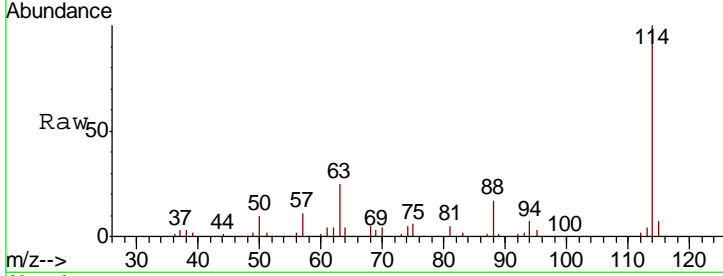




#34
 1,4-Difluorobenzene
 Concen: 50.000 ug/l
 RT: 8.84 min Scan# 1138
 Delta R.T. 0.00 min
 Lab File: VW012452.D
 Acq: 01 Sep 2019 16:57

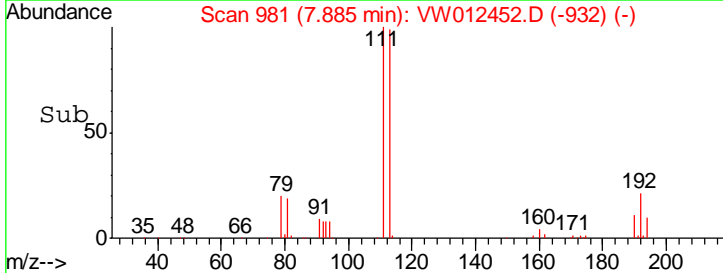
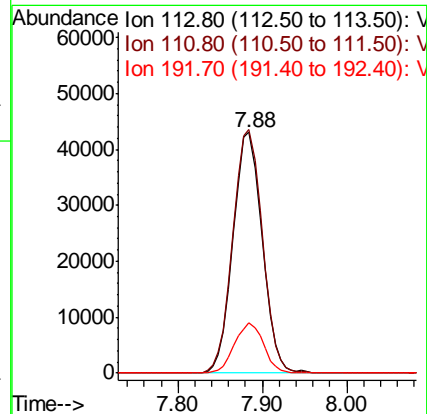
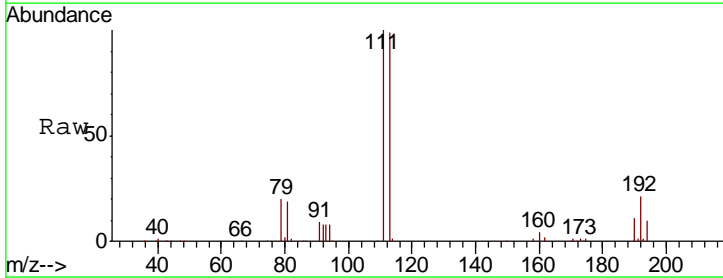
Instrument :
 MSVOA_W
 ClientSampled :
 T1-S-B3-(0)

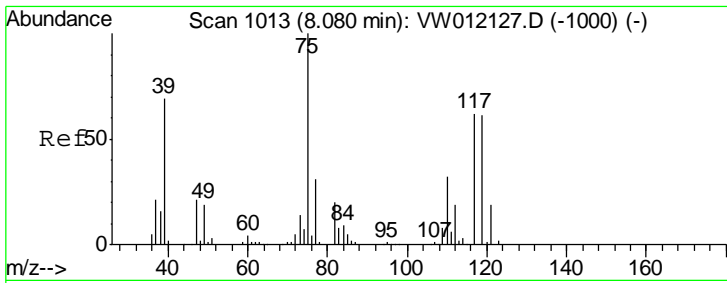
Tgt Ion	Resp	Lower	Upper
114	320270		
63	24.8	0.0	48.6
88	17.3	0.0	32.2



#35
 Dibromofluoromethane
 Concen: 52.733 ug/l
 RT: 7.88 min Scan# 981
 Delta R.T. 0.00 min
 Lab File: VW012452.D
 Acq: 01 Sep 2019 16:57

Tgt Ion	Resp	Lower	Upper
113	100809		
111	102.8	82.7	124.1
192	20.8	16.2	24.2

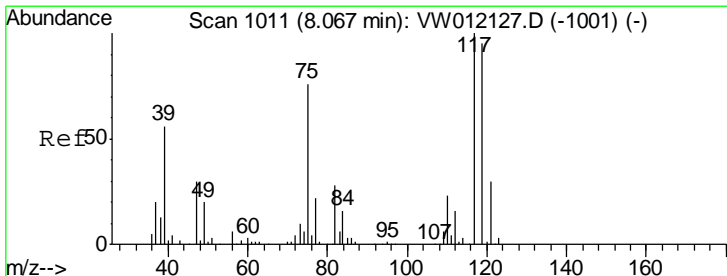
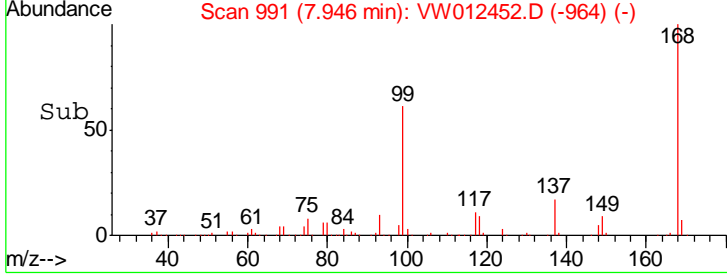
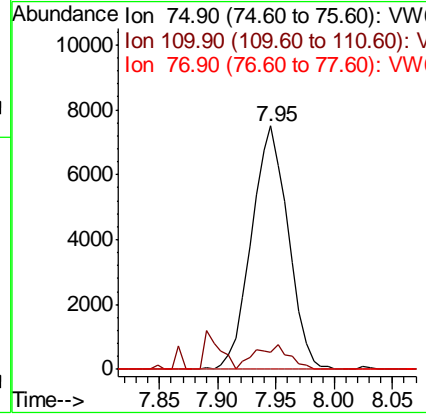
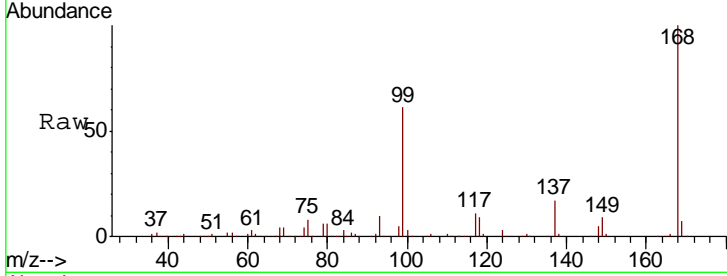




#36
 1,1-Dichloropropene
 Concen: 4.979 ug/l
 RT: 7.95 min Scan# 991
 Delta R.T. -0.13 min
 Lab File: VW012452.D
 Acq: 01 Sep 2019 16:57

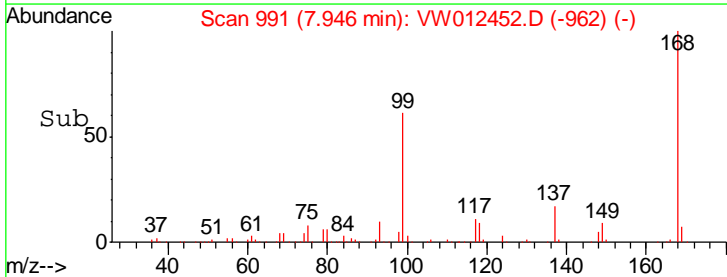
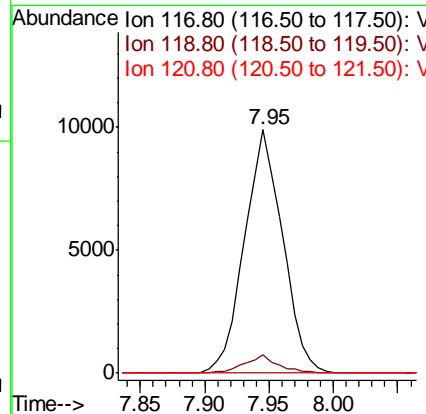
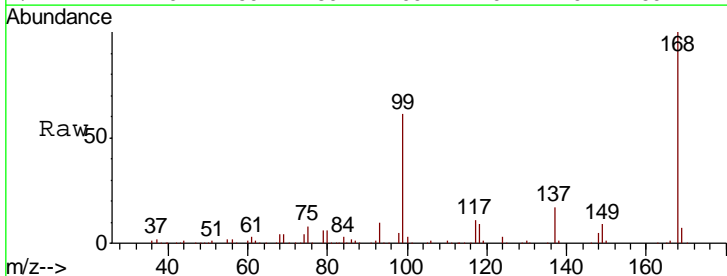
Instrument :
 MSVOA_W
 ClientSampleId :
 T1-S-B3-(0)

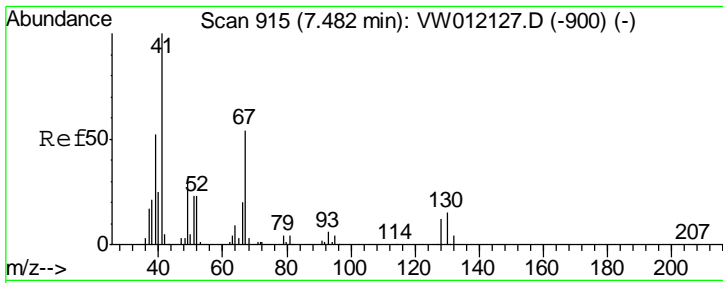
Tgt Ion	Resp	Lower	Upper
75	16477		
110	9.4	15.6	46.8#
77	0.0	24.6	36.8#



#38
 Carbon Tetrachloride
 Concen: 7.078 ug/l
 RT: 7.95 min Scan# 991
 Delta R.T. -0.12 min
 Lab File: VW012452.D
 Acq: 01 Sep 2019 16:57

Tgt Ion	Resp	Lower	Upper
117	20276		
119	7.3	76.2	114.2#
121	0.0	23.8	35.8#

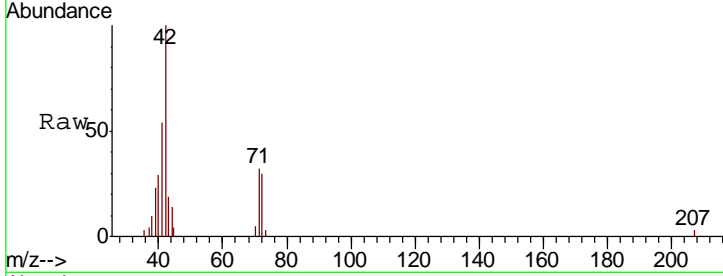




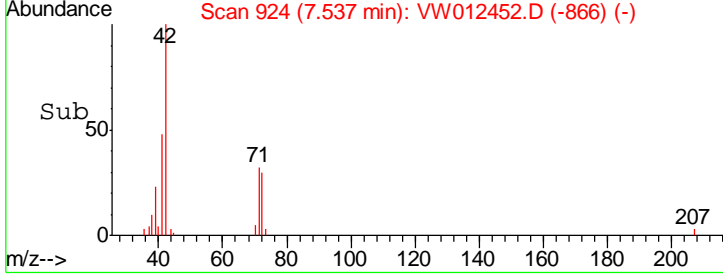
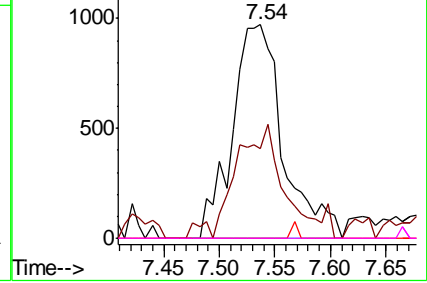
#41
 Methacrylonitrile
 Concen: 2.905 ug/l
 RT: 7.54 min Scan# 924
 Delta R.T. 0.05 min
 Lab File: VW012452.D
 Acq: 01 Sep 2019 16:57

Instrument :
 MSVOA_W
 ClientSampled :
 T1-S-B3-(0)

Tgt Ion	Resp	Lower	Upper
41	100		
39	49.6	45.8	68.8
67	0.0	46.2	69.4#
52	0.0	21.0	31.6#

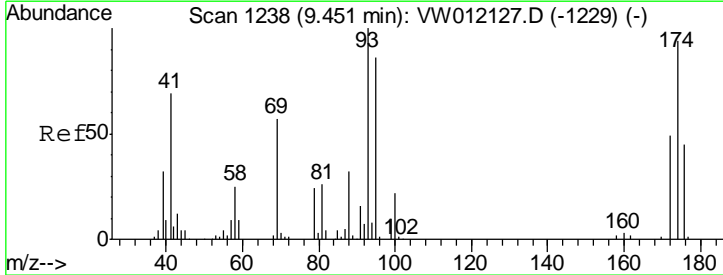


Abundance Ion 41.00 (40.70 to 41.70): VW
 Ion 39.00 (38.70 to 39.70): VW
 Ion 67.00 (66.70 to 67.70): VW
 Ion 52.00 (51.70 to 52.70): VW

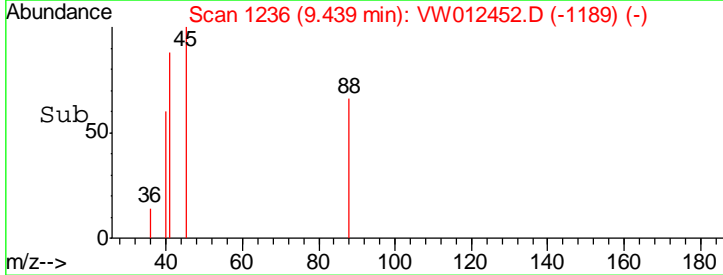
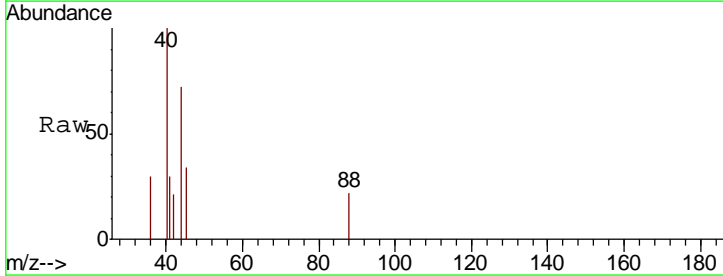
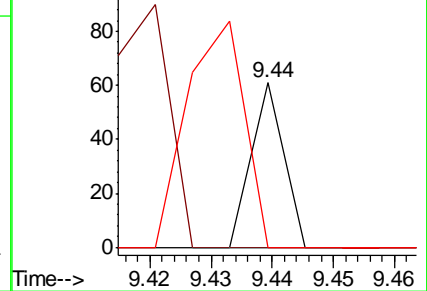


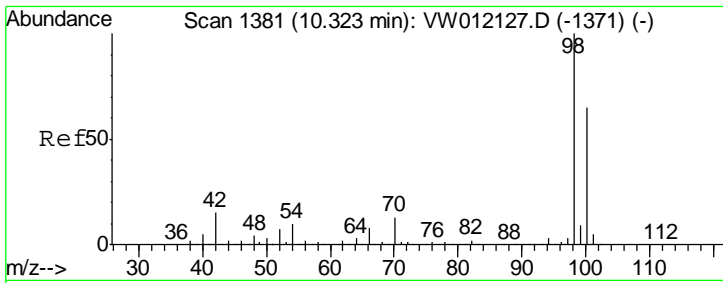
#49
 1,4-Dioxane
 Concen: 1.328 ug/l
 RT: 9.44 min Scan# 1236
 Delta R.T. -0.01 min
 Lab File: VW012452.D
 Acq: 01 Sep 2019 16:57

Tgt Ion	Resp	Lower	Upper
88	100		
43	268.2	32.9	49.3#
58	250.0	71.0	106.4#



Abundance Ion 88.00 (87.70 to 88.70): VW
 Ion 43.00 (42.70 to 43.70): VW
 Ion 58.00 (57.70 to 58.70): VW

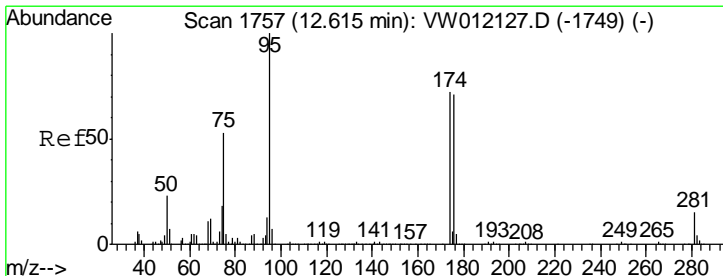
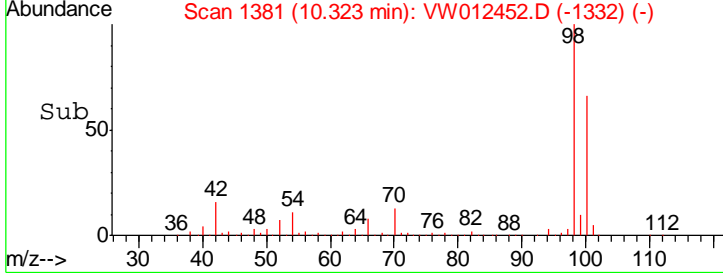
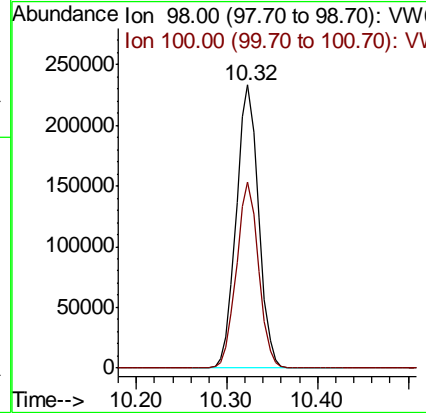
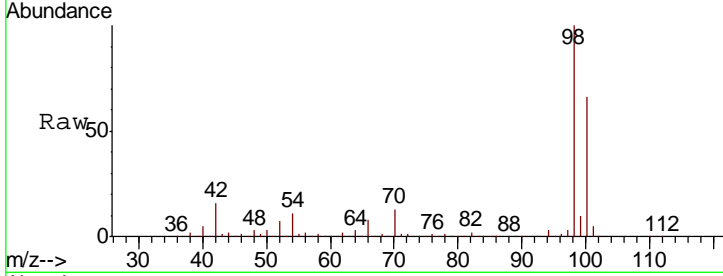




#50
 Toluene-d8
 Concen: 51.418 ug/l
 RT: 10.32 min Scan# 1381
 Delta R.T. 0.00 min
 Lab File: VW012452.D
 Acq: 01 Sep 2019 16:57

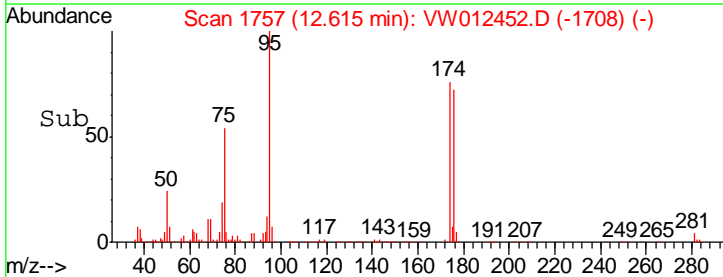
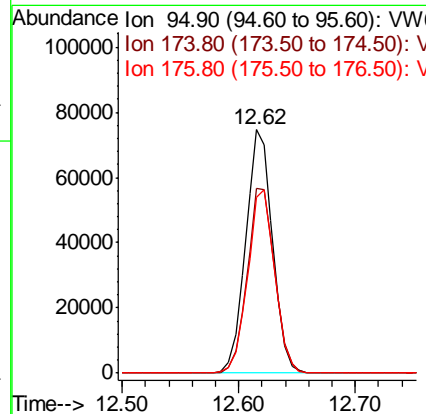
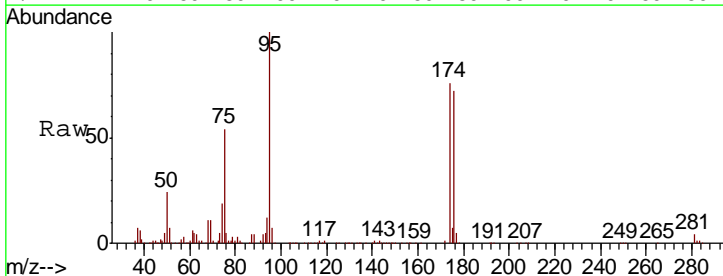
Instrument : MSVOA_W
 ClientSampled : T1-S-B3-(0)

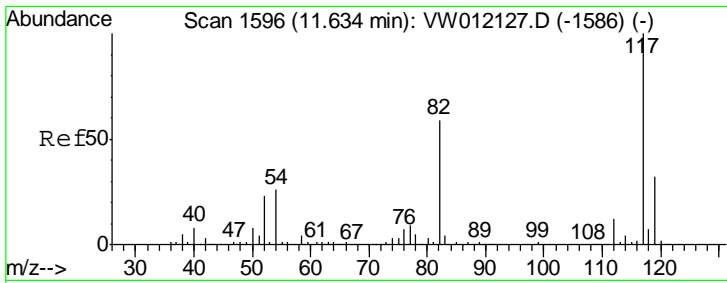
Tgt Ion: 98 Resp: 398564
 Ion Ratio Lower Upper
 98 100
 100 64.9 52.4 78.6



#62
 4-Bromofluorobenzene
 Concen: 43.768 ug/l
 RT: 12.62 min Scan# 1757
 Delta R.T. 0.00 min
 Lab File: VW012452.D
 Acq: 01 Sep 2019 16:57

Tgt Ion: 95 Resp: 119591
 Ion Ratio Lower Upper
 95 100
 174 78.1 0.0 150.8
 176 76.2 0.0 148.6

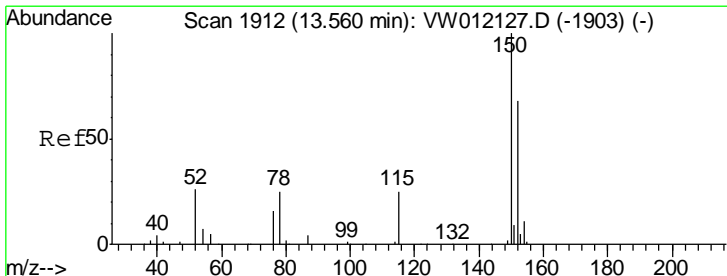
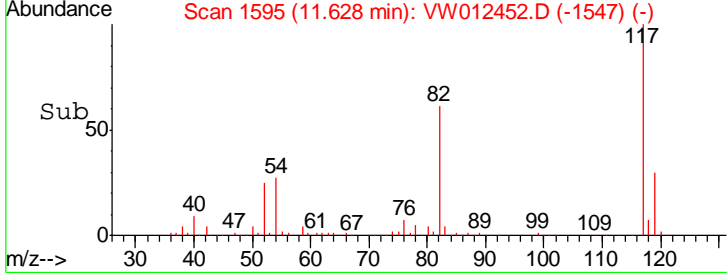
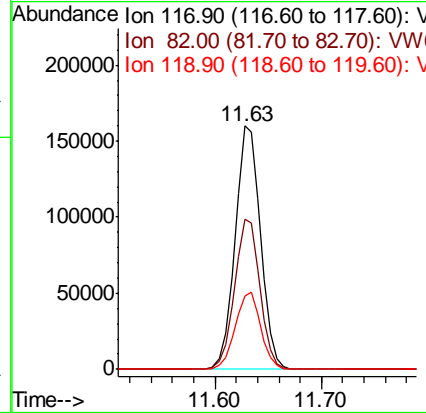
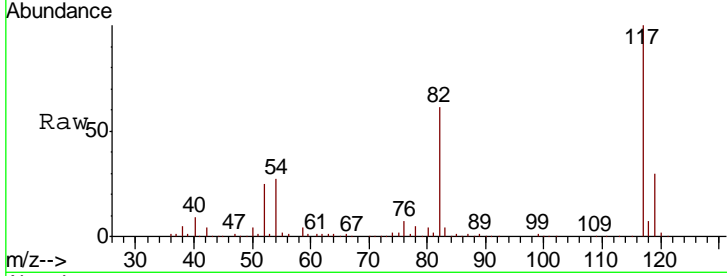




#63
 Chlorobenzene-d5
 Concen: 50.000 ug/l
 RT: 11.63 min Scan# 1595
 Delta R.T. -0.01 min
 Lab File: VW012452.D
 Acq: 01 Sep 2019 16:57

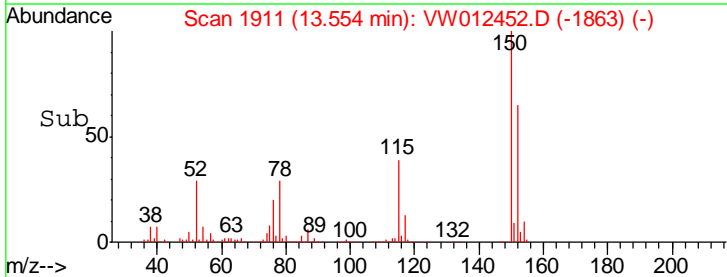
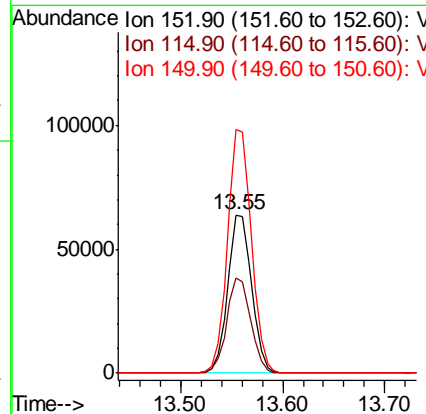
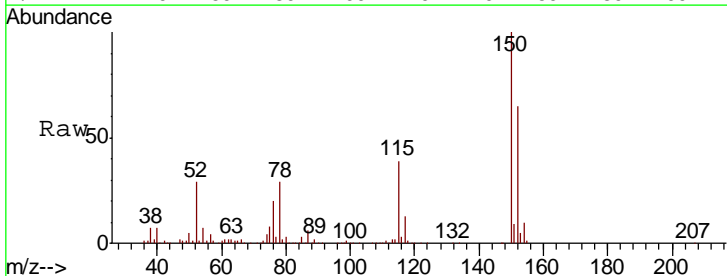
Instrument :
 MSVOA_W
 ClientSampled :
 T1-S-B3-(0)

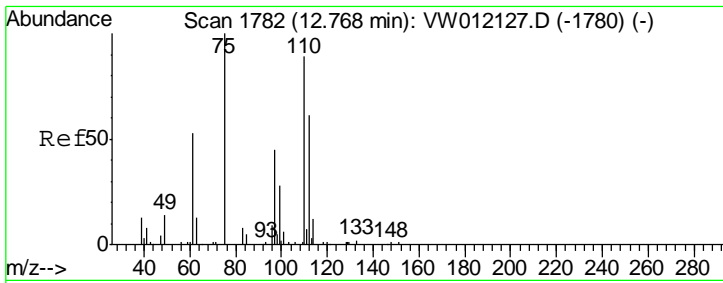
Tgt Ion	Resp	Lower	Upper
117	267744		
82	61.4	47.4	71.2
119	30.3	25.4	38.2



#72
 1,4-Dichlorobenzene-d4
 Concen: 50.000 ug/l
 RT: 13.55 min Scan# 1911
 Delta R.T. -0.01 min
 Lab File: VW012452.D
 Acq: 01 Sep 2019 16:57

Tgt Ion	Resp	Lower	Upper
152	103256		
115	60.4	30.1	90.3
150	154.7	0.0	345.8

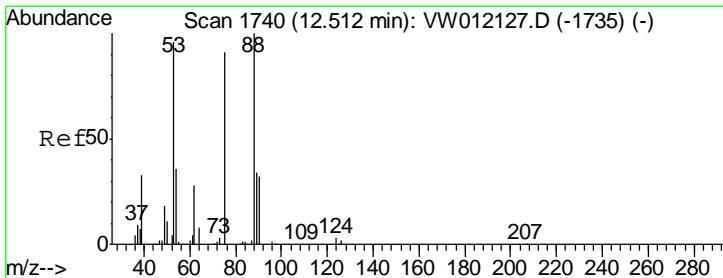
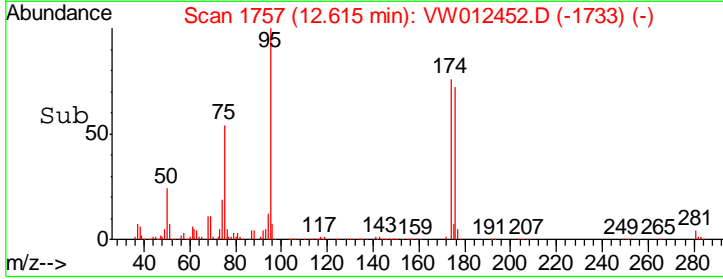
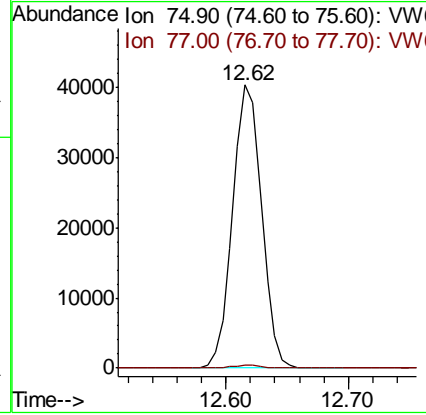
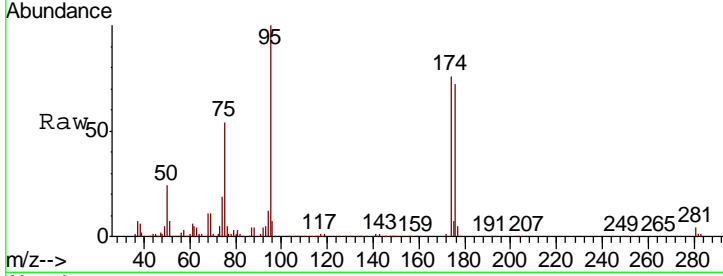




#76
 1,2,3-Trichloropropane
 Concen: 65.620 ug/l
 RT: 12.62 min Scan# 1757
 Delta R.T. -0.15 min
 Lab File: VW012452.D
 Acq: 01 Sep 2019 16:57

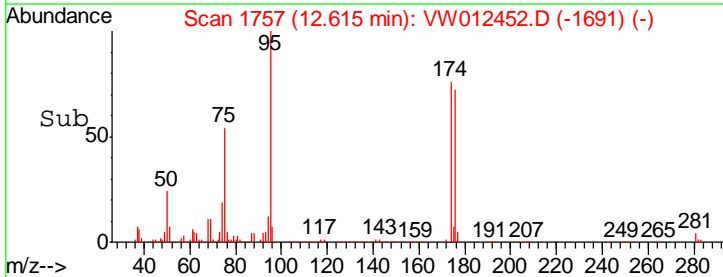
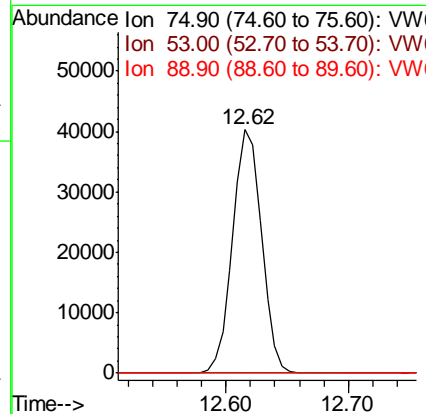
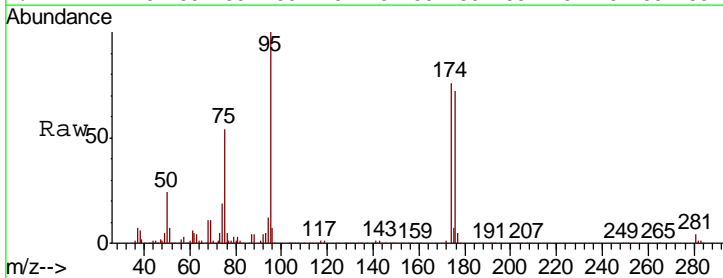
Instrument :
 MSVOA_W
 ClientSampled :
 T1-S-B3-(0)

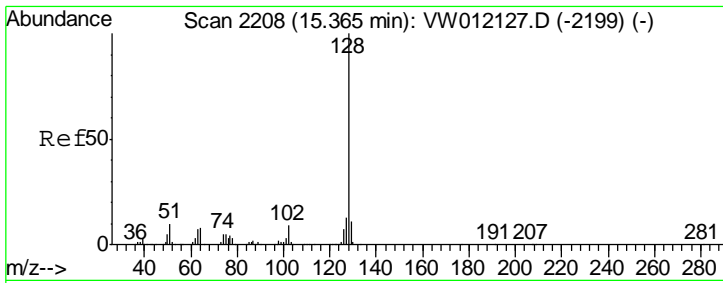
Tgt Ion: 75 Resp: 65990
 Ion Ratio Lower Upper
 75 100
 77 1.0 0.0 0.0#



#81
 trans-1,4-Dichloro-2-butene
 Concen: 143.874 ug/l
 RT: 12.62 min Scan# 1757
 Delta R.T. 0.10 min
 Lab File: VW012452.D
 Acq: 01 Sep 2019 16:57

Tgt Ion: 75 Resp: 65990
 Ion Ratio Lower Upper
 75 100
 53 0.3 89.4 134.0#
 89 0.0 34.5 51.7#

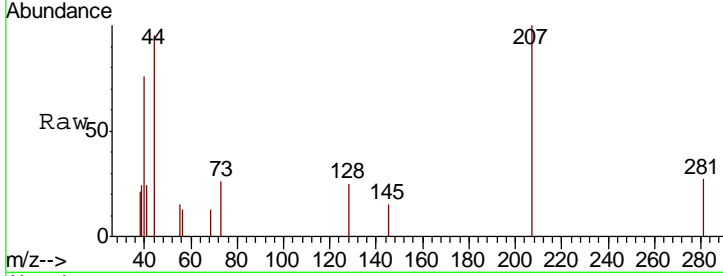




#95
 Naphthalene
 Concen: 4.345 ug/l
 RT: 15.36 min Scan# 2207
 Delta R.T. -0.01 min
 Lab File: VW012452.D
 Acq: 01 Sep 2019 16:57

Instrument : MSVOA_W
 ClientSampled : T1-S-B3-(0)

Tgt Ion	Ratio	Lower	Upper
128	100		
127	0.0	10.7	16.1#
129	0.0	8.7	13.1#



Abundance Ion 128.00 (127.70 to 128.70): V
 Ion 127.00 (126.70 to 127.70): V
 Ion 129.00 (128.70 to 129.70): V

