

Data Path : Z:\VOASRV\HPCHEM1\MSVOA W\DATA\VW090319\  
 Data File : VW012555.D  
 Acq On : 03 Sep 2019 18:56  
 Operator : SY/VA  
 Sample : K4550-02RE  
 Misc : 4.58G/5ML/MSVOA W/SOIL  
 ALS Vial : 24 Sample Multiplier: 1

Instrument :  
 MSVOA\_W  
 ClientSampleId :  
 S402-K1-2.0-2.5-082619-FDRE

Quant Time: Sep 03 19:19:32 2019  
 Quant Method : Z:\VOASRV\HPCHEM1\MSVOA\_W\METHOD\82W082319S.M  
 Quant Title : SW846 8260  
 QLast Update : Mon Aug 26 07:18:31 2019  
 Response via : Initial Calibration

Internal Standards	R.T.	QIon	Response	Conc	Units	Dev(Min)
1) Pentafluorobenzene	7.95	168	219379	50.00	ug/l	0.00
34) 1,4-Difluorobenzene	8.84	114	347076	50.00	ug/l	0.00
63) Chlorobenzene-d5	11.63	117	223045	50.00	ug/l	0.00
72) 1,4-Dichlorobenzene-d4	13.56	152	47820	50.00	ug/l	0.00

## System Monitoring Compounds

33) 1,2-Dichloroethane-d4	8.30	65	144373	55.36	ug/l	0.00
Spiked Amount				50.000		
			Recovery	=	110.72%	
35) Dibromofluoromethane	7.88	113	110090	53.14	ug/l	0.00
Spiked Amount				50.000		
			Recovery	=	106.28%	
50) Toluene-d8	10.32	98	400344	47.66	ug/l	0.00
Spiked Amount				50.000		
			Recovery	=	95.32%	
62) 4-Bromofluorobenzene	12.62	95	77949	26.32	ug/l	0.00
Spiked Amount				50.000		
			Recovery	=	52.64%	

## Target Compounds

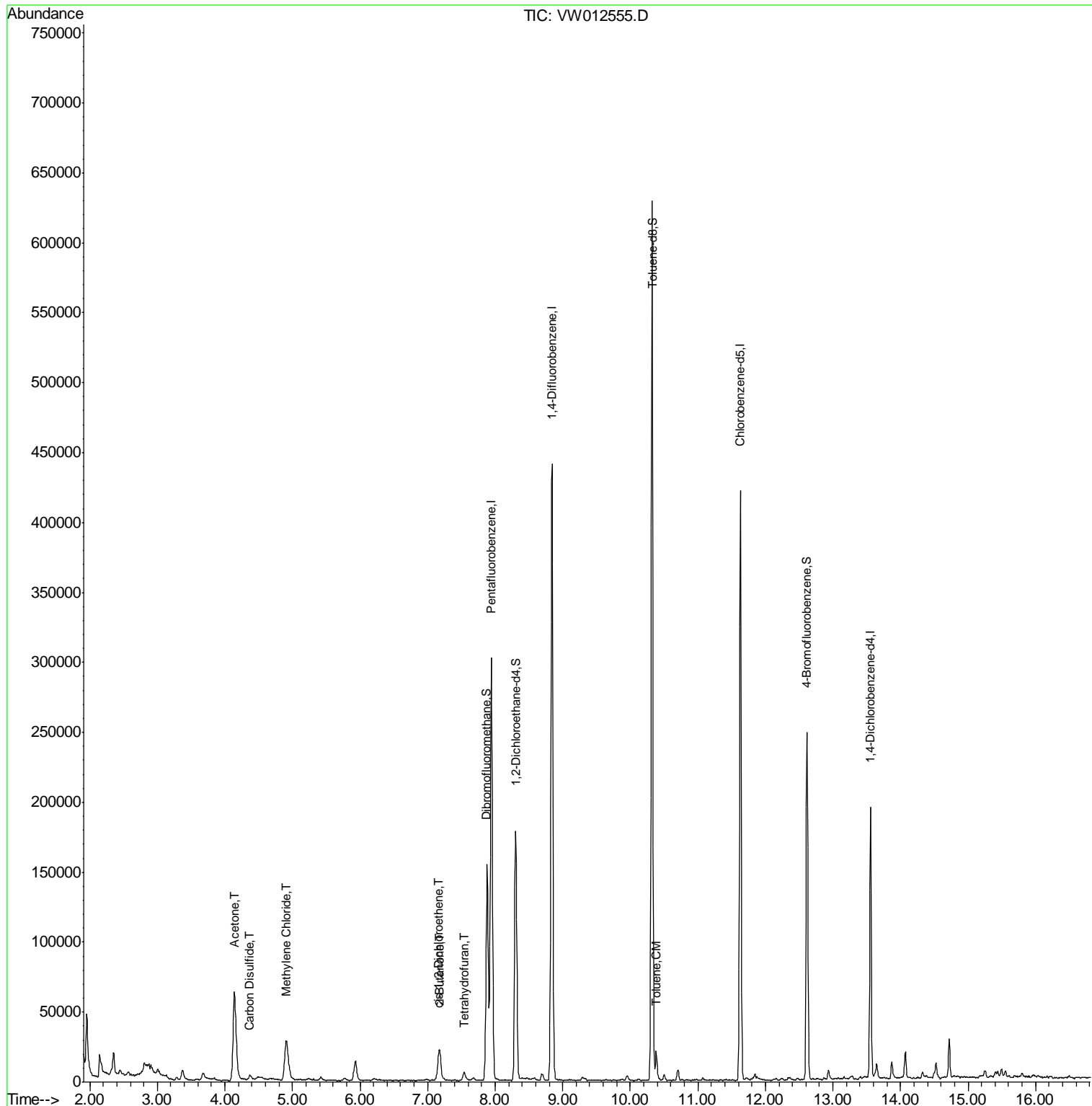
						Qvalue
16) Acetone	4.14	43	135885	203.839	ug/l	98
17) Carbon Disulfide	4.37	76	7300	1.098	ug/l	99
20) Methylene Chloride	4.91	84	21374	8.481	ug/l	97
25) 2-Butanone	7.18	43	25082	27.688	ug/l	99
27) cis-1,2-Dichloroethene	7.16	96	4636	1.839	ug/l	92
29) Tetrahydrofuran	7.54	42	5595	10.295	ug/l	97
52) Toluene	10.39	92	8519	1.448	ug/l	96

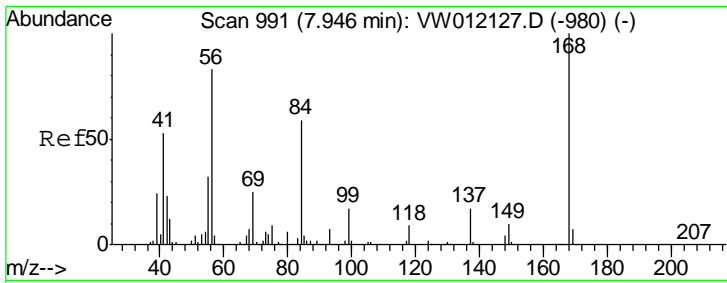
(#) = qualifier out of range (m) = manual integration (+) = signals summed

Data Path : Z:\VOASRV\HPCHEM1\MSVOA W\DATA\VW090319\  
 Data File : VW012555.D  
 Acq On : 03 Sep 2019 18:56  
 Operator : SY/VA  
 Sample : K4550-02RE  
 Misc : 4.58G/5ML/MSVOA W/SOIL  
 ALS Vial : 24 Sample Multiplier: 1

Instrument :  
 MSVOA\_W  
 ClientSampleId :  
 S402-K1-2.0-2.5-082619-FDRE

Quant Time: Sep 03 19:19:32 2019  
 Quant Method : Z:\VOASRV\HPCHEM1\MSVOA\_W\METHOD\82W082319S.M  
 Quant Title : SW846 8260  
 QLast Update : Mon Aug 26 07:18:31 2019  
 Response via : Initial Calibration

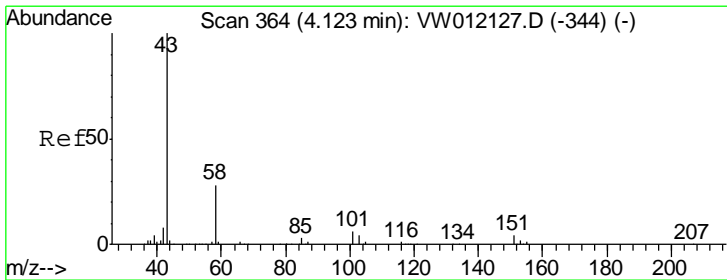
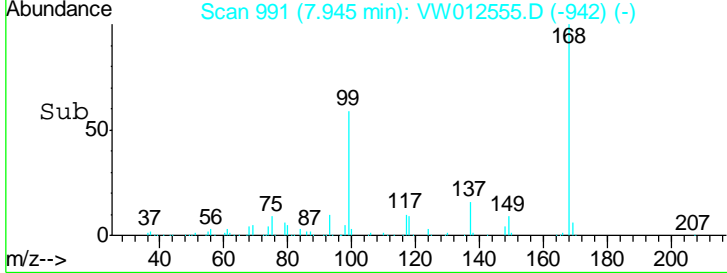
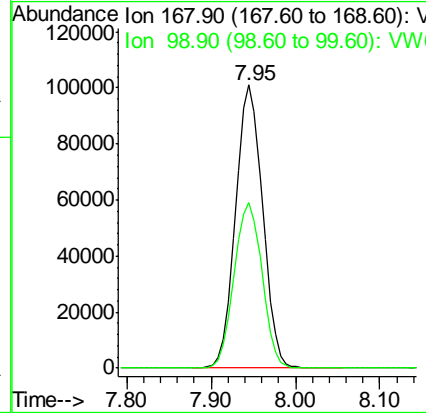
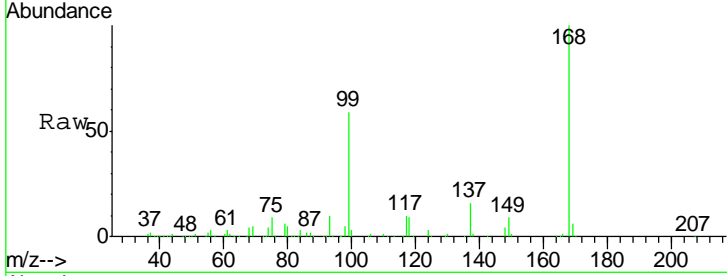




#1  
 Pentafluorobenzene  
 Concen: 50.000 ug/l  
 RT: 7.95 min Scan# 991  
 Delta R.T. -0.00 min  
 Lab File: VW012555.D  
 Acq: 03 Sep 2019 18:56

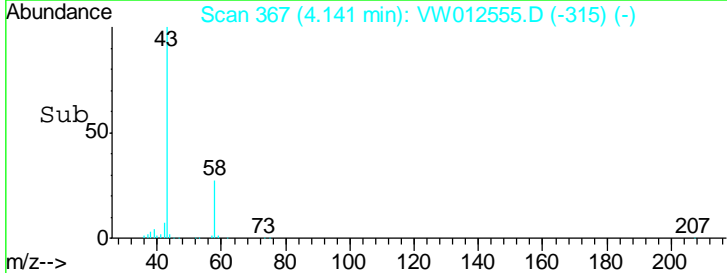
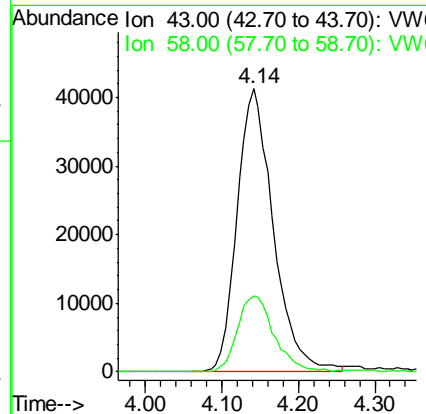
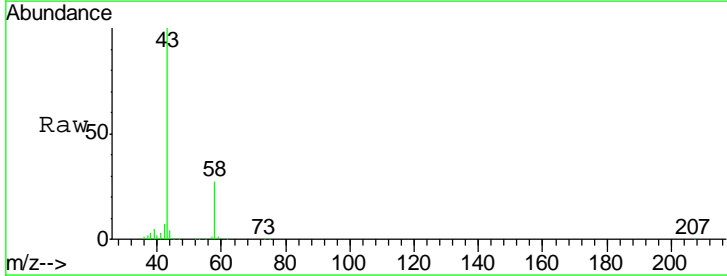
**Instrument :**  
 MSVOA\_W  
**ClientSampleId :**  
 S402-K1-2.0-2.5-082619-FDRE

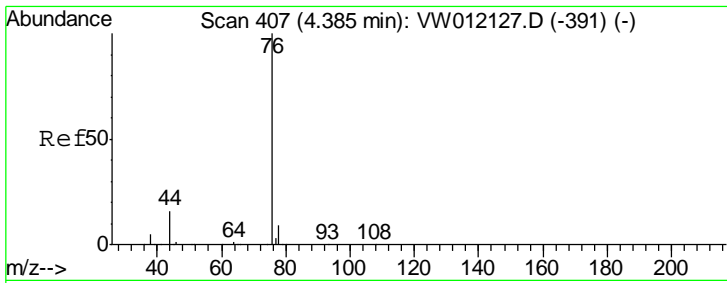
Tgt Ion	Resp	Lower	Upper
168	100		
99	58.6	49.2	73.8



#16  
 Acetone  
 Concen: 203.839 ug/l  
 RT: 4.14 min Scan# 367  
 Delta R.T. 0.02 min  
 Lab File: VW012555.D  
 Acq: 03 Sep 2019 18:56

Tgt Ion	Resp	Lower	Upper
43	100		
58	27.0	22.4	33.6

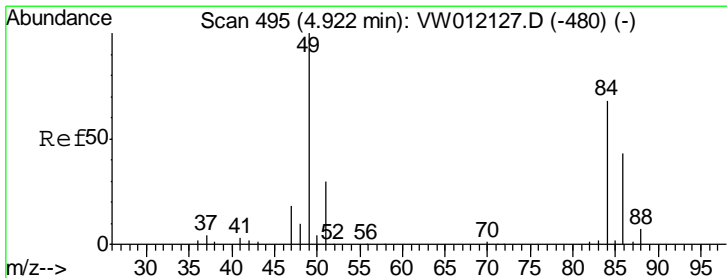
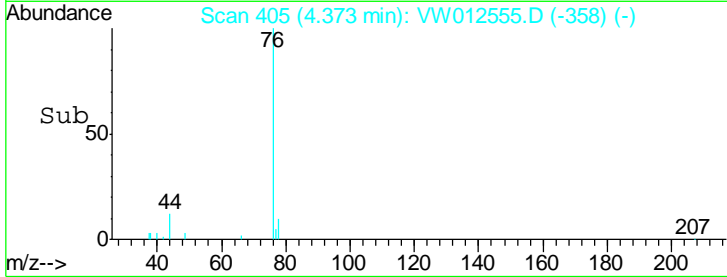
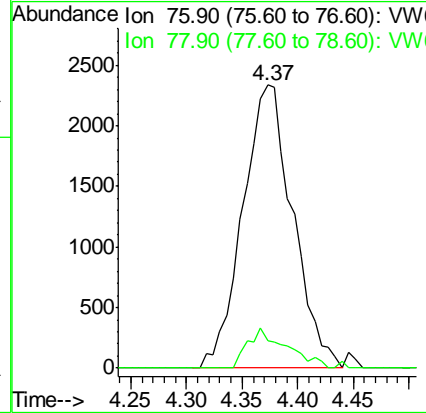
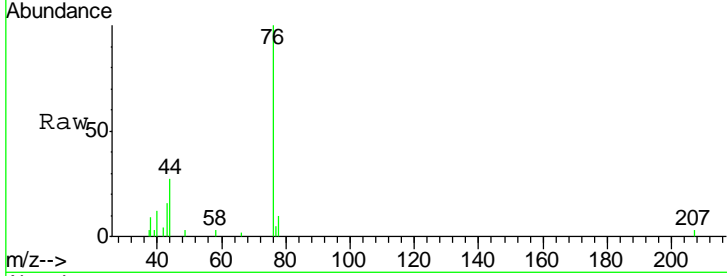




#17  
 Carbon Disulfide  
 Concen: 1.098 ug/l  
 RT: 4.37 min Scan# 405  
 Delta R.T. -0.01 min  
 Lab File: VW012555.D  
 Acq: 03 Sep 2019 18:56

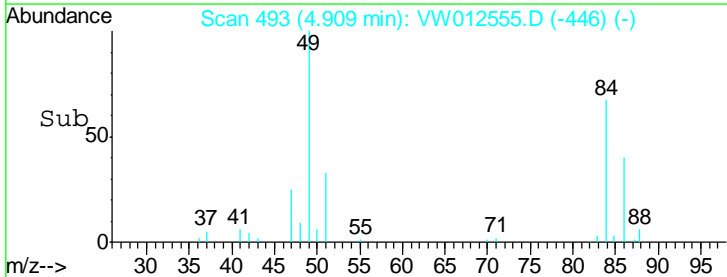
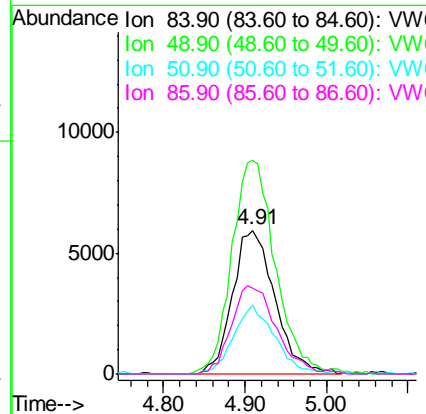
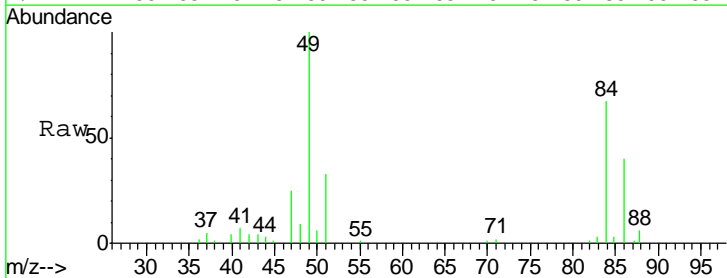
**Instrument :**  
 MSVOA\_W  
**ClientSampled :**  
 S402-K1-2.0-2.5-082619-FDRE

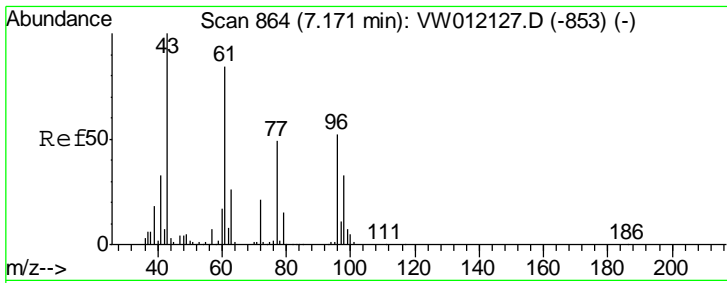
Tgt Ion	Resp	Lower	Upper
76	7300		
78	9.6	7.3	10.9



#20  
 Methylene Chloride  
 Concen: 8.481 ug/l  
 RT: 4.91 min Scan# 493  
 Delta R.T. -0.01 min  
 Lab File: VW012555.D  
 Acq: 03 Sep 2019 18:56

Tgt Ion	Resp	Lower	Upper
84	21374		
49	147.5	117.8	176.8
51	48.4	35.6	53.4
86	58.5	51.2	76.8

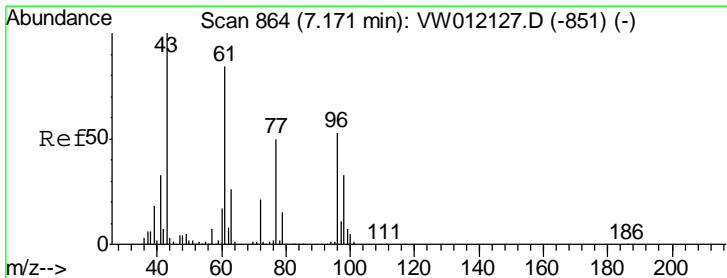
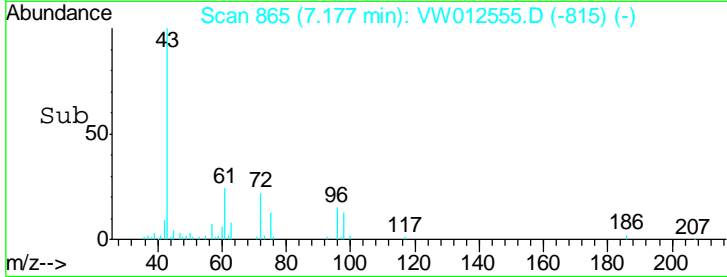
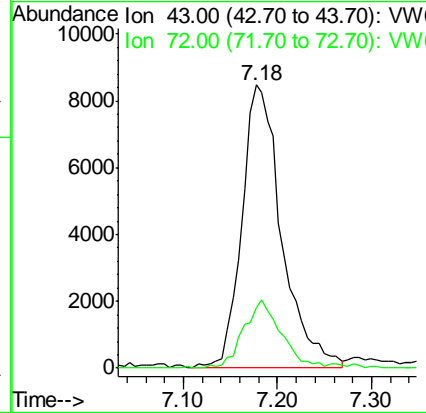
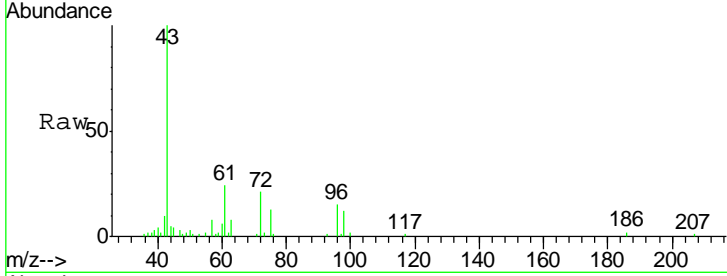




#25  
 2-Butanone  
 Concen: 27.688 ug/l  
 RT: 7.18 min Scan# 865  
 Delta R.T. 0.01 min  
 Lab File: VW012555.D  
 Acq: 03 Sep 2019 18:56

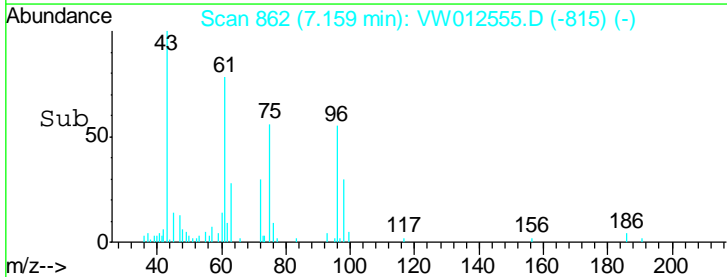
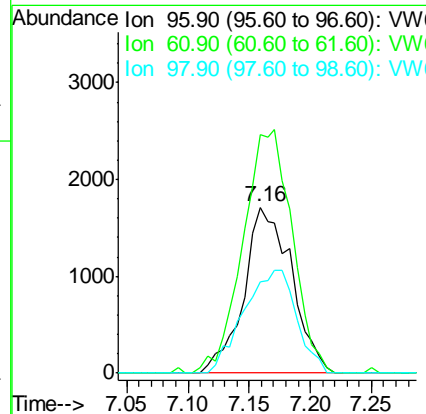
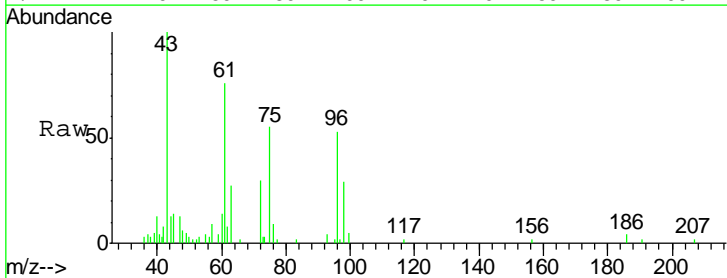
**Instrument :**  
 MSVOA\_W  
**ClientSampled :**  
 S402-K1-2.0-2.5-082619-FDRE

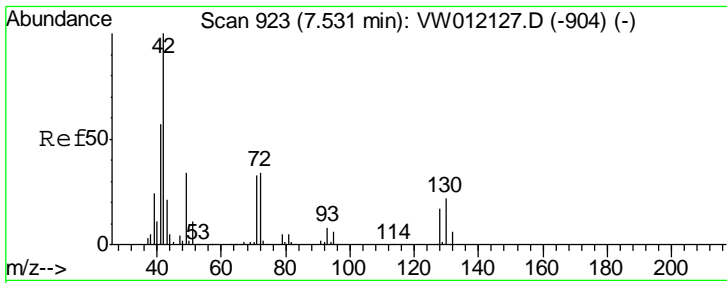
Tgt Ion: 43 Resp: 25082  
 Ion Ratio Lower Upper  
 43 100  
 72 21.4 16.6 24.8



#27  
 cis-1,2-Dichloroethene  
 Concen: 1.839 ug/l  
 RT: 7.16 min Scan# 862  
 Delta R.T. -0.01 min  
 Lab File: VW012555.D  
 Acq: 03 Sep 2019 18:56

Tgt Ion: 96 Resp: 4636  
 Ion Ratio Lower Upper  
 96 100  
 61 151.1 0.0 326.6  
 98 68.6 0.0 127.4

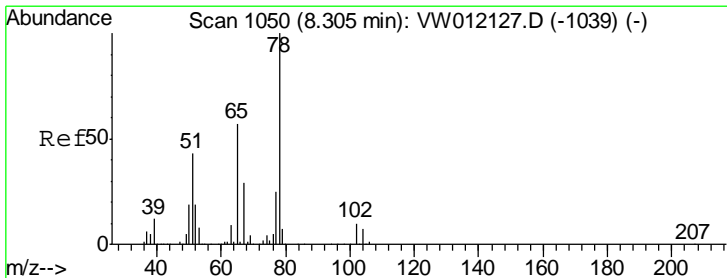
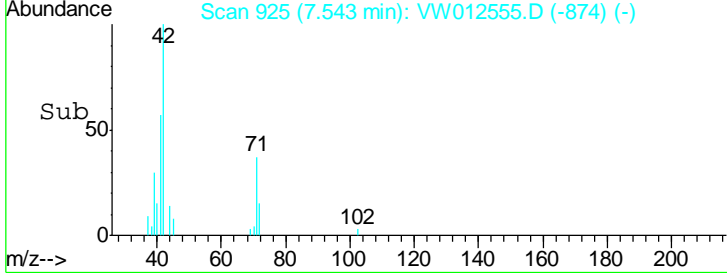
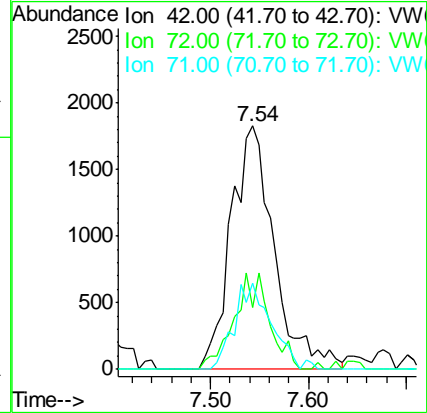
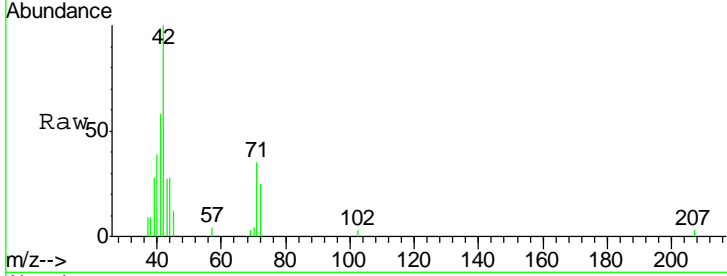




#29  
 Tetrahydrofuran  
 Concen: 10.295 ug/l  
 RT: 7.54 min Scan# 925  
 Delta R.T. 0.01 min  
 Lab File: VW012555.D  
 Acq: 03 Sep 2019 18:56

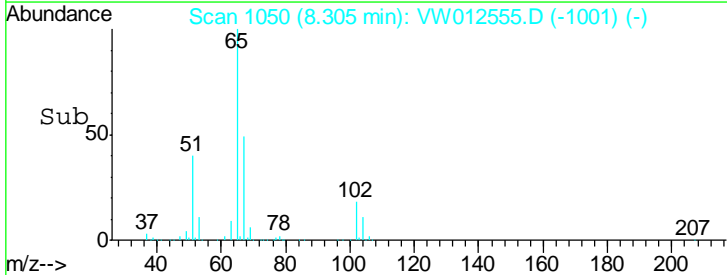
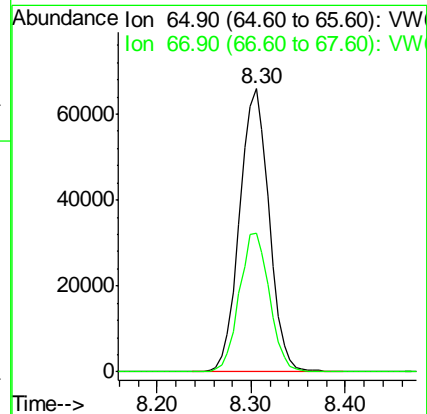
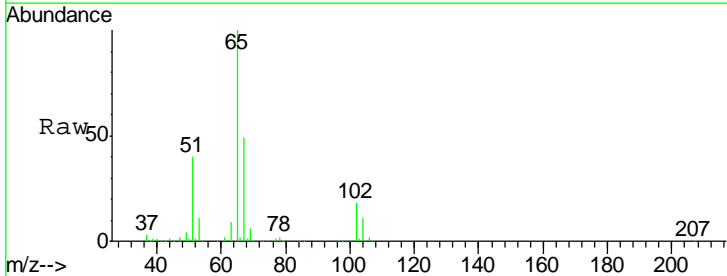
**Instrument :**  
 MSVOA\_W  
**ClientSampleId :**  
 S402-K1-2.0-2.5-082619-FDRE

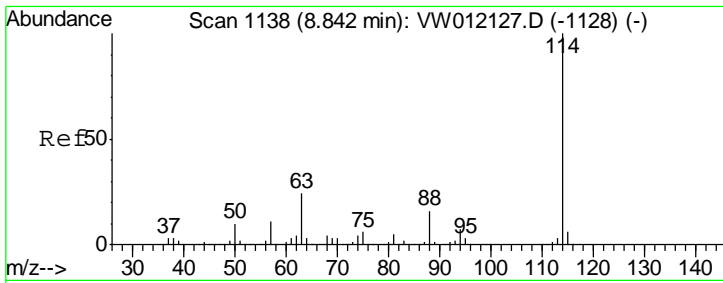
Tgt Ion	Resp	Lower	Upper
42	100		
72	32.3	27.3	40.9
71	30.0	25.5	38.3



#33  
 1,2-Dichloroethane-d4  
 Concen: 55.360 ug/l  
 RT: 8.30 min Scan# 1050  
 Delta R.T. -0.00 min  
 Lab File: VW012555.D  
 Acq: 03 Sep 2019 18:56

Tgt Ion	Resp	Lower	Upper
65	100		
67	50.3	0.0	102.6

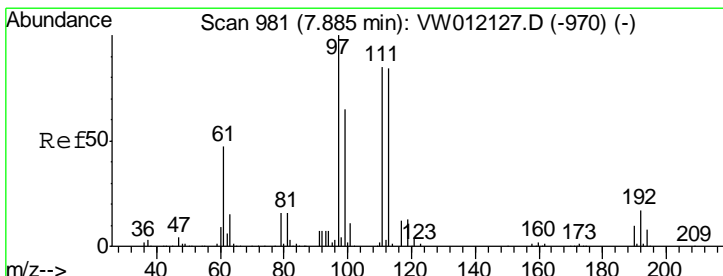
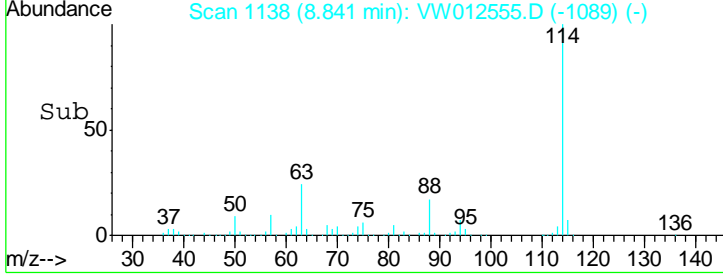
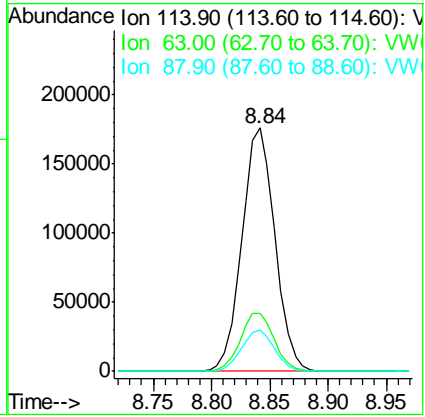
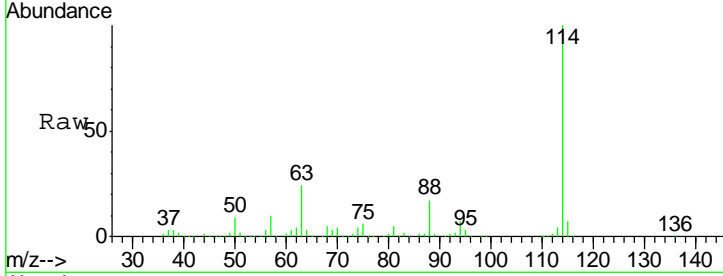




#34  
 1,4-Difluorobenzene  
 Concen: 50.000 ug/l  
 RT: 8.84 min Scan# 1138  
 Delta R.T. -0.00 min  
 Lab File: VW012555.D  
 Acq: 03 Sep 2019 18:56

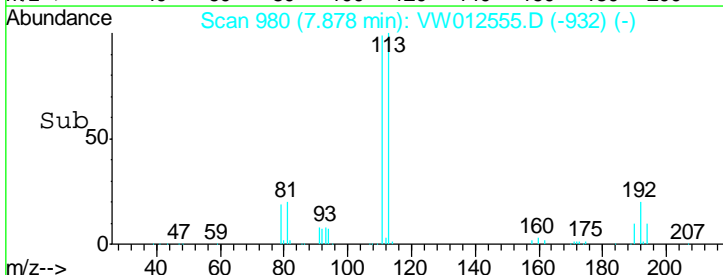
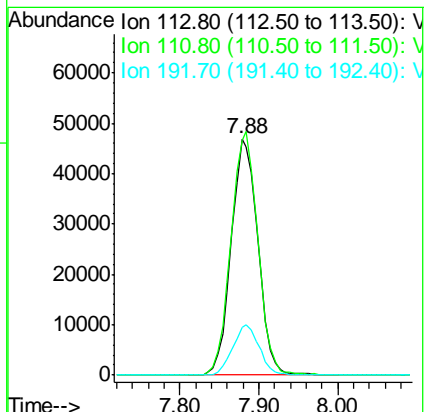
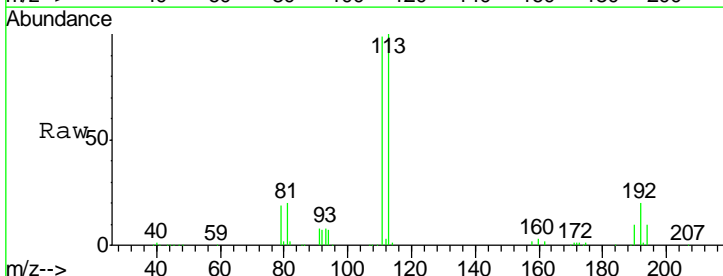
**Instrument :**  
 MSVOA\_W  
**ClientSampled :**  
 S402-K1-2.0-2.5-082619-FDRE

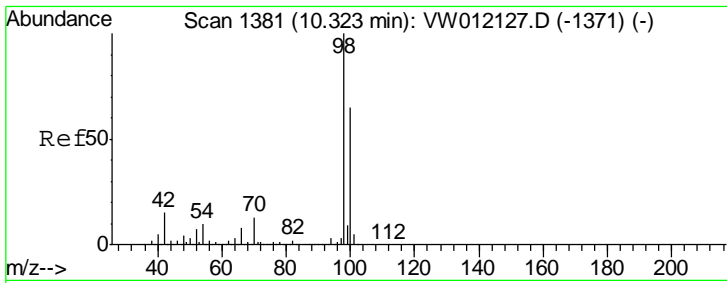
Tgt Ion	Resp	Lower	Upper
114	347076		
63	24.0	0.0	48.6
88	17.0	0.0	32.2



#35  
 Dibromofluoromethane  
 Concen: 53.140 ug/l  
 RT: 7.88 min Scan# 980  
 Delta R.T. -0.01 min  
 Lab File: VW012555.D  
 Acq: 03 Sep 2019 18:56

Tgt Ion	Resp	Lower	Upper
113	110090		
111	104.1	82.7	124.1
192	21.1	16.2	24.2

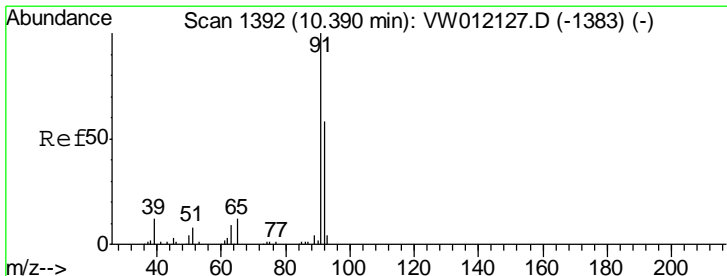
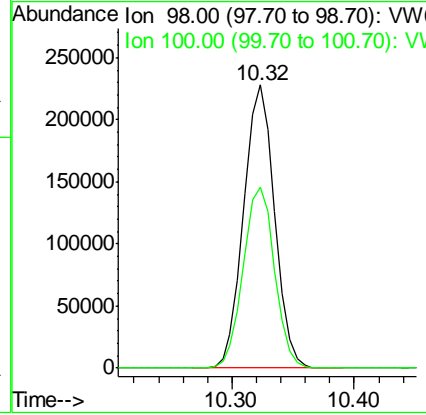
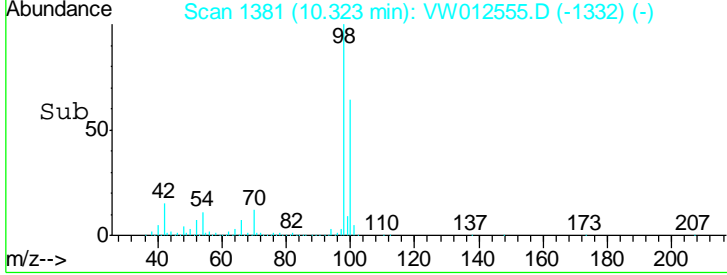
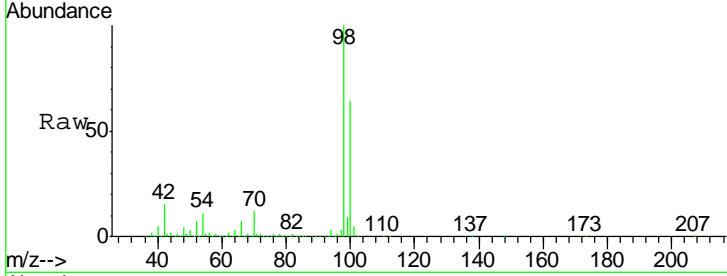




#50  
 Toluene-d8  
 Concen: 47.659 ug/l  
 RT: 10.32 min Scan# 1381  
 Delta R.T. -0.00 min  
 Lab File: VW012555.D  
 Acq: 03 Sep 2019 18:56

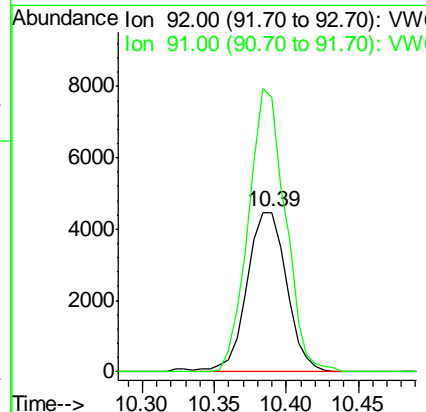
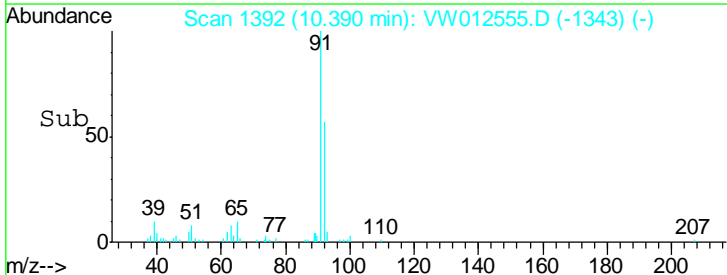
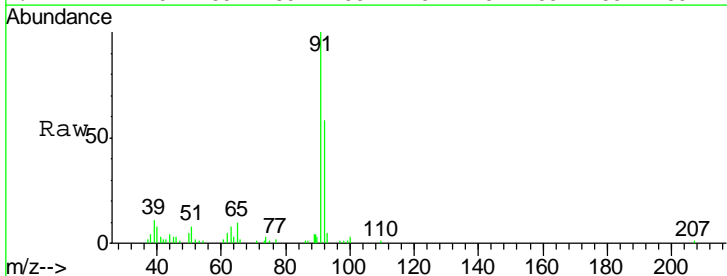
**Instrument :**  
 MSVOA\_W  
**ClientSampled :**  
 S402-K1-2.0-2.5-082619-FDRE

Tgt Ion: 98 Resp: 400344  
 Ion Ratio Lower Upper  
 98 100  
 100 64.7 52.4 78.6

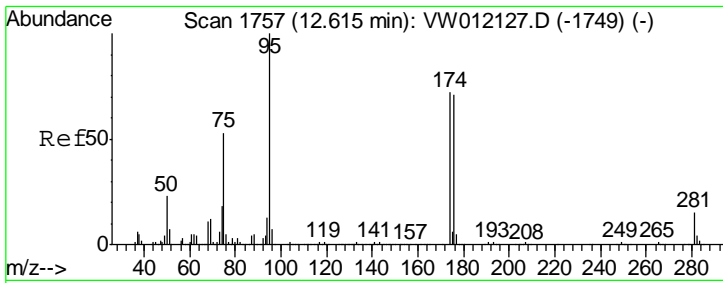


#52  
 Toluene  
 Concen: 1.448 ug/l  
 RT: 10.39 min Scan# 1392  
 Delta R.T. -0.00 min  
 Lab File: VW012555.D  
 Acq: 03 Sep 2019 18:56

Tgt Ion: 92 Resp: 8519  
 Ion Ratio Lower Upper  
 92 100  
 91 165.0 136.6 204.8



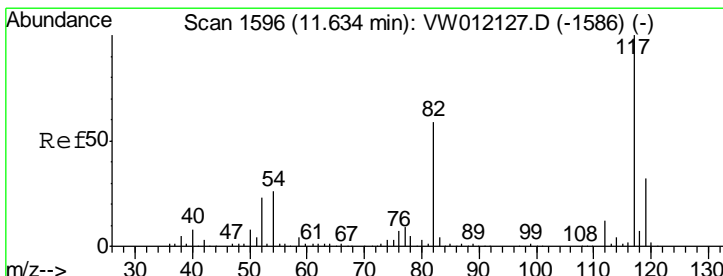
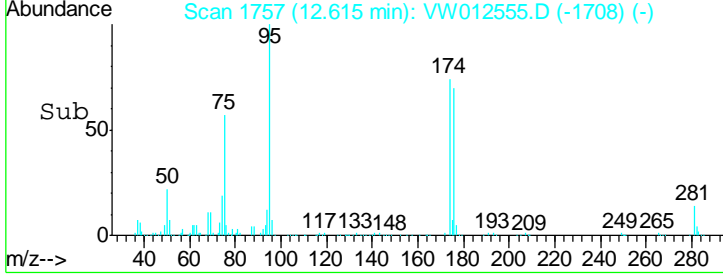
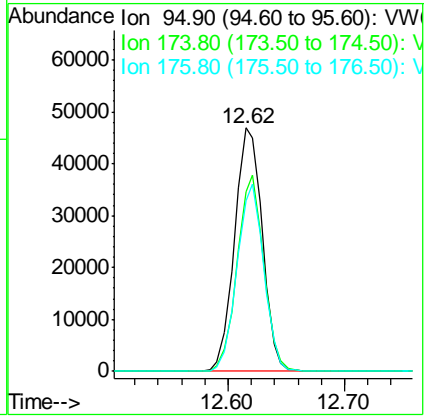
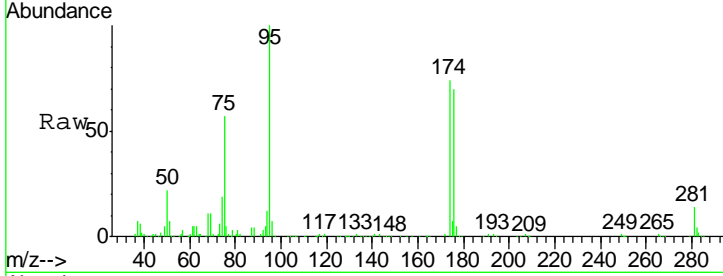




#62  
 4-Bromofluorobenzene  
 Concen: 26.325 ug/l  
 RT: 12.62 min Scan# 1757  
 Delta R.T. -0.00 min  
 Lab File: VW012555.D  
 Acq: 03 Sep 2019 18:56

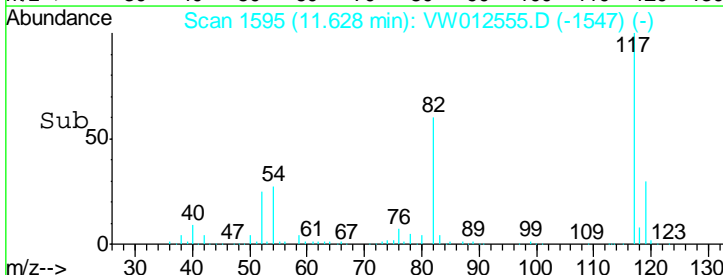
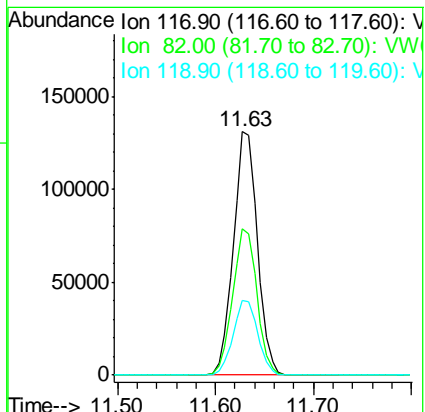
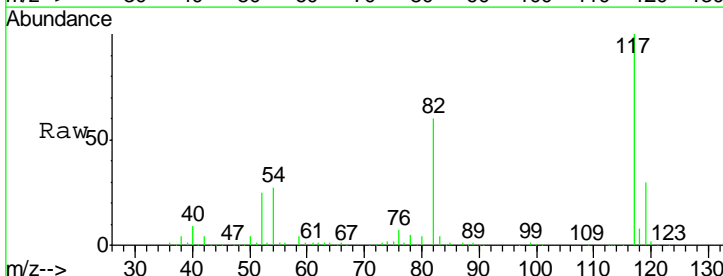
Instrument : MSVOA\_W  
 ClientSampled : S402-K1-2.0-2.5-082619-FDRE

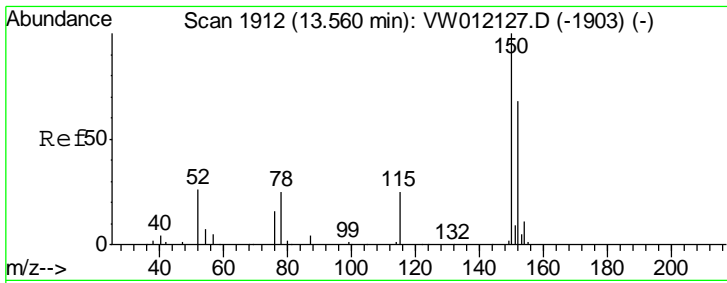
Tgt Ion	Resp	Lower	Upper
95	77949		
174	77.2	0.0	150.8
176	74.4	0.0	148.6



#63  
 Chlorobenzene-d5  
 Concen: 50.000 ug/l  
 RT: 11.63 min Scan# 1595  
 Delta R.T. -0.01 min  
 Lab File: VW012555.D  
 Acq: 03 Sep 2019 18:56

Tgt Ion	Resp	Lower	Upper
117	223045		
82	60.0	47.4	71.2
119	30.5	25.4	38.2





#72  
 1,4-Dichlorobenzene-d4  
 Concen: 50.000 ug/l  
 RT: 13.56 min Scan# 1912  
 Delta R.T. -0.00 min  
 Lab File: VW012555.D  
 Acq: 03 Sep 2019 18:56

Instrument : MSVOA\_W  
 ClientSampled : S402-K1-2.0-2.5-082619-FDRE

Tot Ion	Resp	Lower	Upper
152	100		
115	61.7	30.1	90.3
150	159.8	0.0	345.8

