

Data Path : Z:\VOASRV\HPCHEM1\MSVOA\_W\DATA\VW090618\  
 Data File : VW005185.D  
 Acq On : 07 Sep 2018 02:31  
 Operator : SY/AP  
 Sample : J4748-03  
 Misc : 4.97G/5ML/MSVOA\_W/SOIL  
 ALS Vial : 38 Sample Multiplier: 1

Instrument :  
 MSVOA\_W  
 ClientSampled :  
 SB-08

Quant Time: Sep 07 04:19:18 2018  
 Quant Method : Z:\VOASRV\HPCHEM1\MSVOA\_W\METHOD\82W090118S.M  
 Quant Title : SW846 8260  
 QLast Update : Sat Sep 01 03:35:05 2018  
 Response via : Initial Calibration

Internal Standards	R.T.	QIon	Response	Conc	Units	Dev(Min)
1) Pentafluorobenzene	7.96	168	380931	50.00	ug/l	0.00
34) 1,4-Difluorobenzene	8.85	114	646106	50.00	ug/l	0.00
63) Chlorobenzene-d5	11.64	117	636017	50.00	ug/l	0.00
72) 1,4-Dichlorobenzene-d4	13.57	152	300326	50.00	ug/l	0.00

## System Monitoring Compounds

33) 1,2-Dichloroethane-d4	8.31	65	243490	77.11	ug/l	0.00
Spiked Amount	50.000		Recovery	=	154.22%	
35) Dibromofluoromethane	7.89	113	223743	59.92	ug/l	0.00
Spiked Amount	50.000		Recovery	=	119.84%	
50) Toluene-d8	10.33	98	923255	53.66	ug/l	0.00
Spiked Amount	50.000		Recovery	=	107.32%	
62) 4-Bromofluorobenzene	12.63	95	322464	53.16	ug/l	0.00
Spiked Amount	50.000		Recovery	=	106.32%	

## Target Compounds

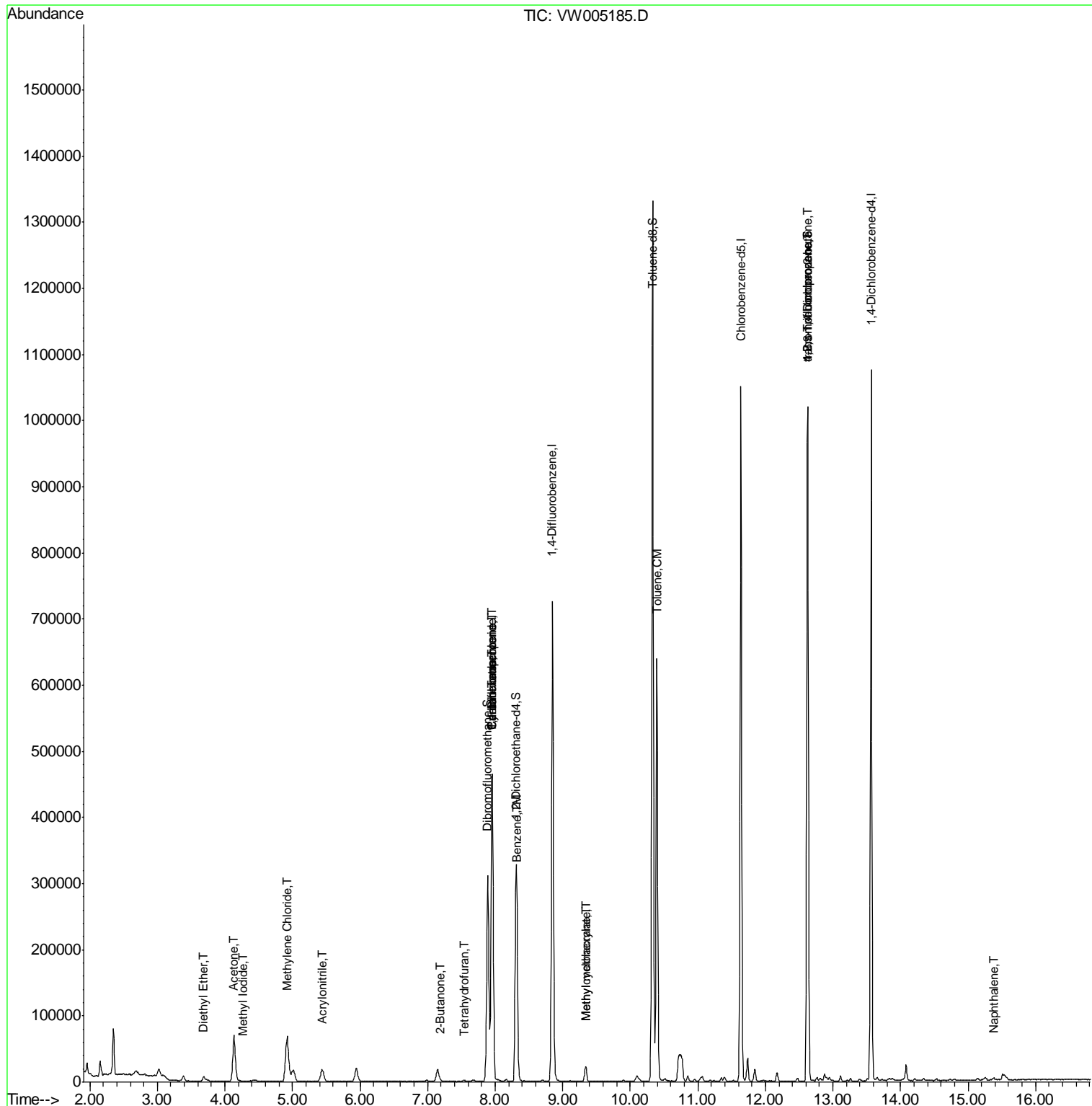
					Qvalue	
5) Bromomethane	2.76	94	1080	Below Cal	#	36
8) Diethyl Ether	3.68	74	3470	1.968	ug/l	91
10) Methyl Iodide	4.28	142	627	3.934	ug/l #	88
11) Tert butyl alcohol	5.19	59	135	Below Cal	#	72
15) Acrylonitrile	5.45	53	1142	1.536	ug/l #	44
16) Acetone	4.13	43	118025	186.371	ug/l	95
20) Methylene Chloride	4.92	84	56616	10.130	ug/l	98
25) 2-Butanone	7.20	43	2505	2.281	ug/l #	79
29) Tetrahydrofuran	7.55	42	1110	1.978	ug/l #	78
31) Cyclohexane	7.96	56	8519	1.374	ug/l #	1
36) 1,1-Dichloropropene	7.95	75	25698	4.176	ug/l #	48
38) Carbon Tetrachloride	7.96	117	33473	5.721	ug/l #	18
39) Methylcyclohexane	9.34	83	8636	1.160	ug/l	97
40) Benzene	8.33	78	35797	1.900	ug/l	96
48) Methyl methacrylate	9.34	41	3933	1.951	ug/l #	64
52) Toluene	10.40	92	289044	22.645	ug/l	99
76) 1,2,3-Trichloropropane	12.63	75	150327	66.684	ug/l #	100
81) trans-1,4-Dichloro-2-buten	12.63	75	150327	160.501	ug/l #	15
95) Naphthalene	15.38	128	3182	4.250	ug/l #	90

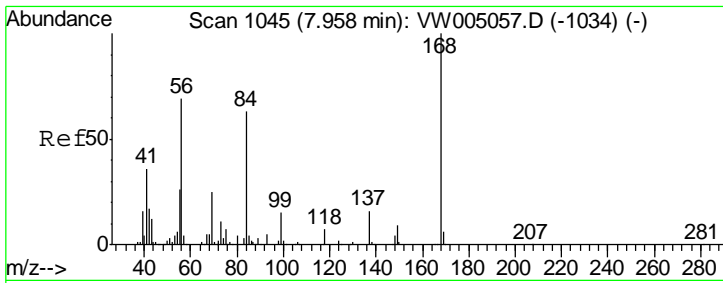
(#) = qualifier out of range (m) = manual integration (+) = signals summed

Data Path : Z:\VOASRV\HPCHEM1\MSVOA\_W\DATA\VW090618\  
 Data File : VW005185.D  
 Acq On : 07 Sep 2018 02:31  
 Operator : SY/AP  
 Sample : J4748-03  
 Misc : 4.97G/5ML/MSVOA\_W/SOIL  
 ALS Vial : 38 Sample Multiplier: 1

Instrument :  
 MSVOA\_W  
 Client Sampled :  
 SB-08

Quant Time: Sep 07 04:19:18 2018  
 Quant Method : Z:\VOASRV\HPCHEM1\MSVOA\_W\METHOD\82W090118S.M  
 Quant Title : SW846 8260  
 QLast Update : Sat Sep 01 03:35:05 2018  
 Response via : Initial Calibration

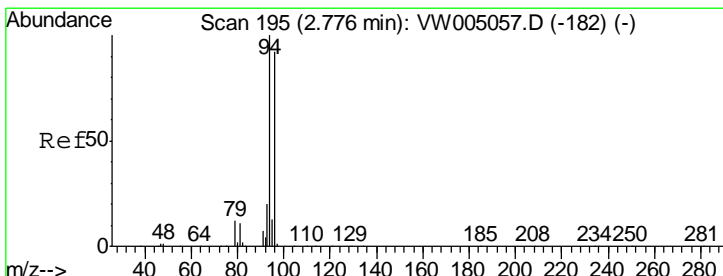
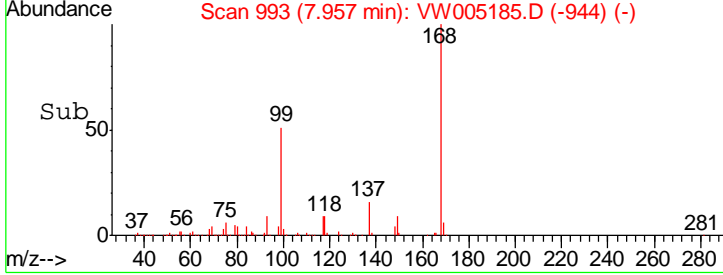
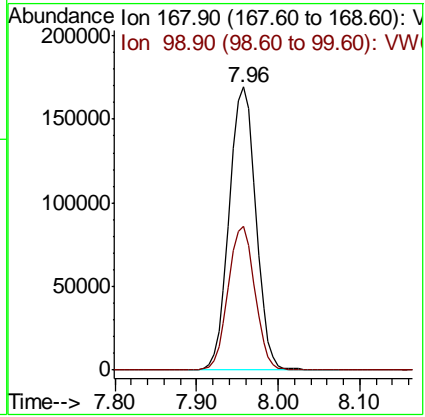
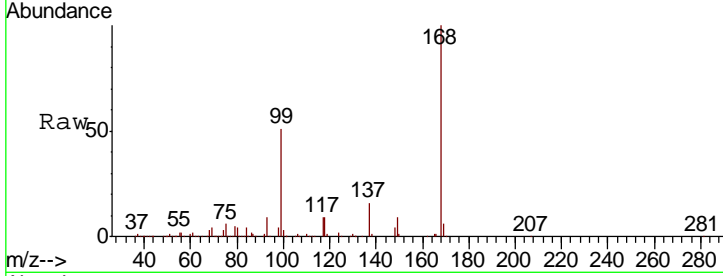




#1  
 Pentafluorobenzene  
 Concen: 50.000 ug/l  
 RT: 7.96 min Scan# 993  
 Delta R.T. -0.00 min  
 Lab File: VW005185.D  
 Acq: 07 Sep 2018 02:31

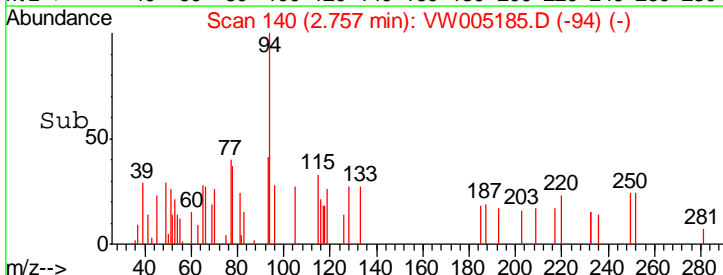
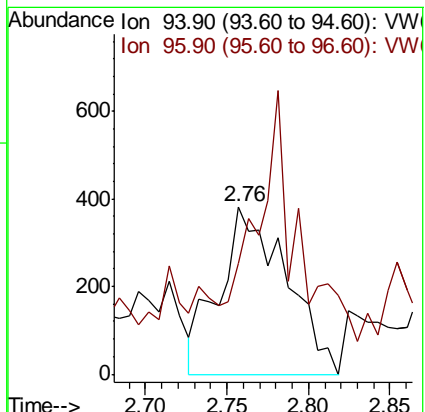
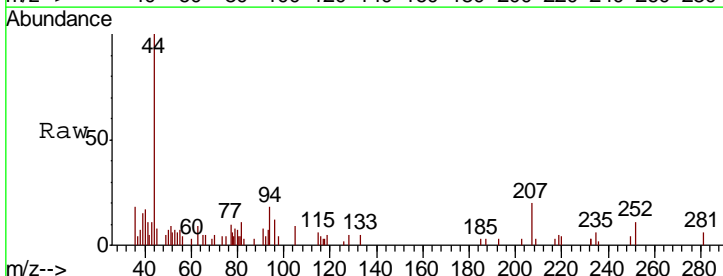
**Instrument :**  
 MSVOA\_W  
**ClientSampled :**  
 SB-08

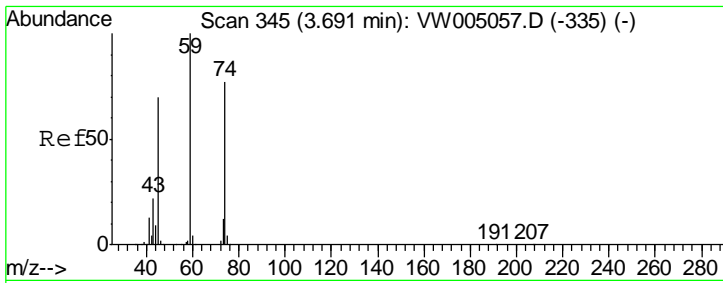
Tgt Ion	Resp	Lower	Upper
168	100		
99	50.7	39.4	59.0



#5  
 Bromomethane  
 Concen: Below Cal  
 RT: 2.76 min Scan# 140  
 Delta R.T. -0.02 min  
 Lab File: VW005185.D  
 Acq: 07 Sep 2018 02:31

Tgt Ion	Resp	Lower	Upper
94	100		
96	30.4	73.2	109.8#

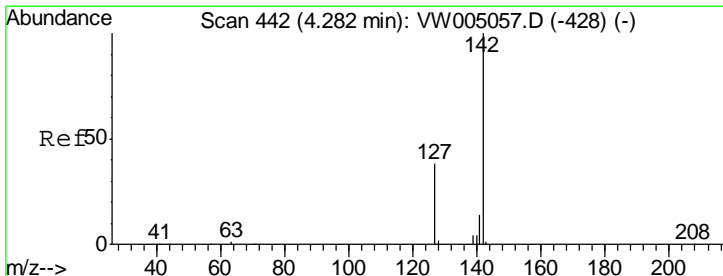
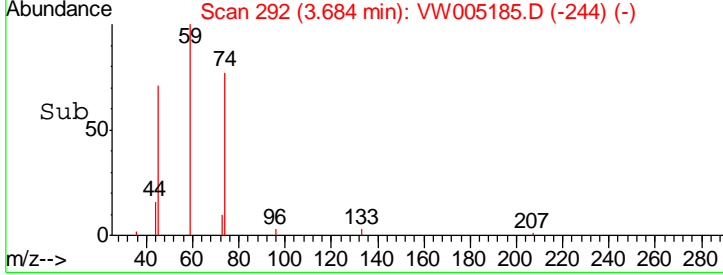
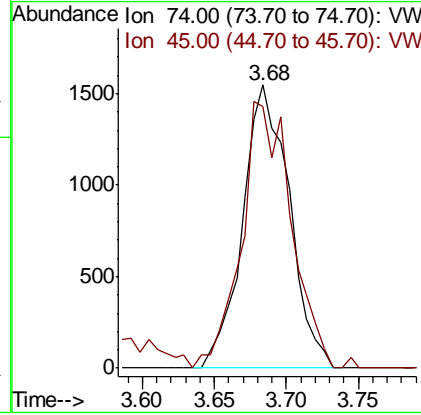
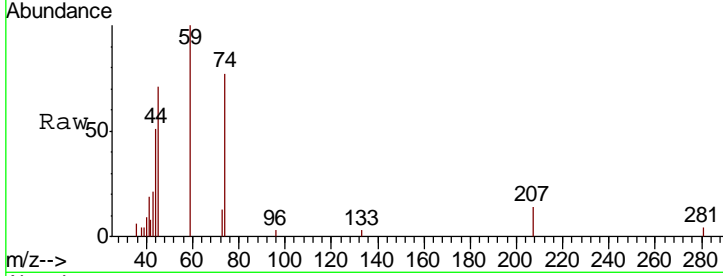




#8  
 Diethyl Ether  
 Concen: 1.968 ug/l  
 RT: 3.68 min Scan# 292  
 Delta R.T. -0.01 min  
 Lab File: VW005185.D  
 Acq: 07 Sep 2018 02:31

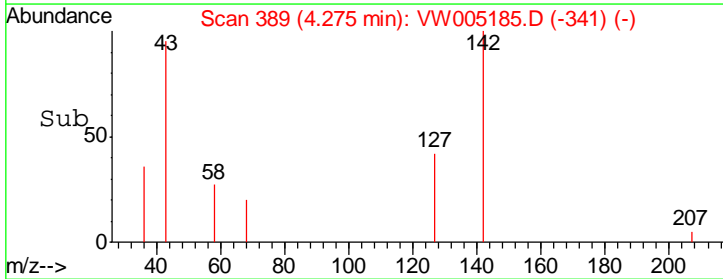
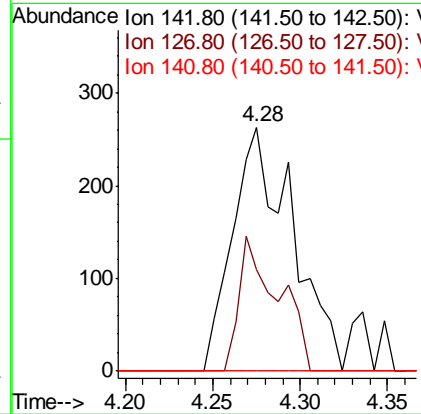
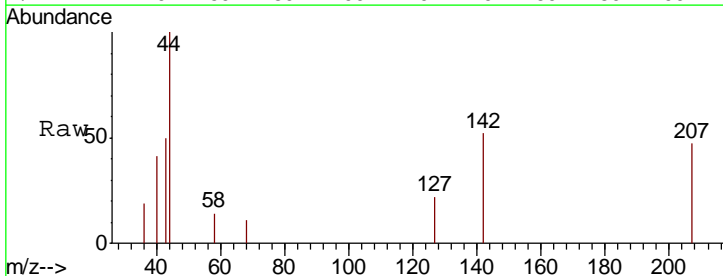
**Instrument :**  
 MSVOA\_W  
**ClientSampled :**  
 SB-08

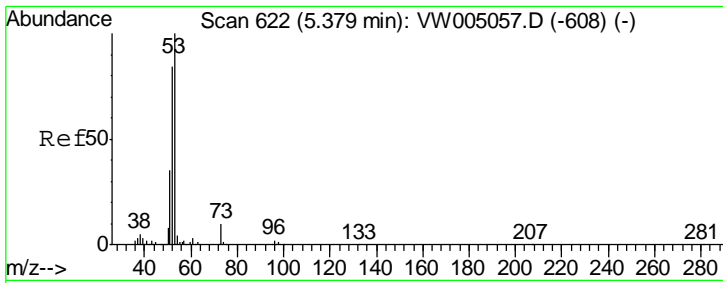
Tgt Ion: 74 Resp: 3470  
 Ion Ratio Lower Upper  
 74 100  
 45 100.5 46.0 137.8



#10  
 Methyl Iodide  
 Concen: 3.934 ug/l  
 RT: 4.28 min Scan# 389  
 Delta R.T. -0.01 min  
 Lab File: VW005185.D  
 Acq: 07 Sep 2018 02:31

Tgt Ion: 142 Resp: 627  
 Ion Ratio Lower Upper  
 142 100  
 127 36.5 30.8 46.2  
 141 0.0 11.6 17.4#

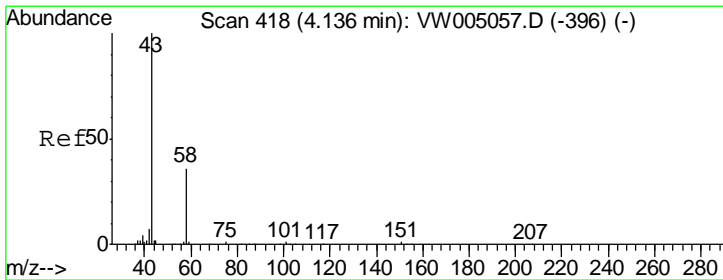
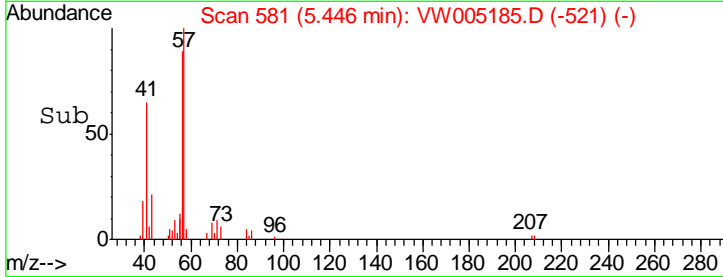
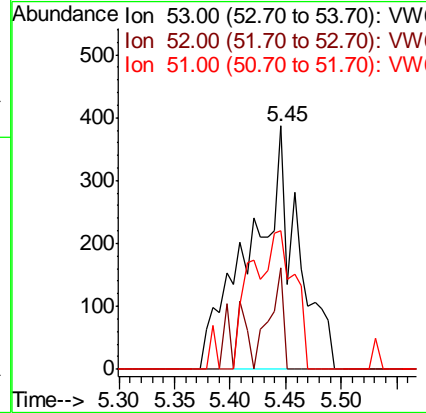
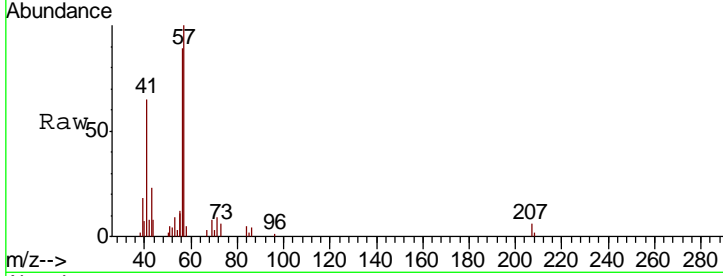




#15  
 Acrylonitrile  
 Concen: 1.536 ug/l  
 RT: 5.45 min Scan# 581  
 Delta R.T. 0.07 min  
 Lab File: VW005185.D  
 Acq: 07 Sep 2018 02:31

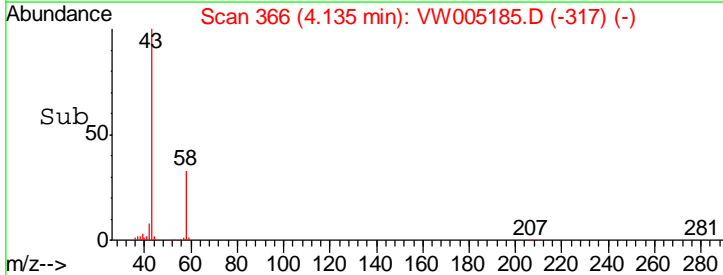
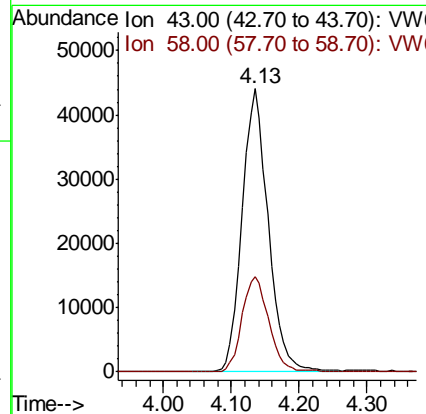
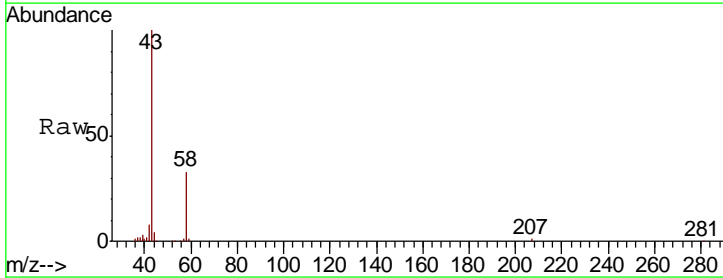
Instrument :  
 MSVOA\_W  
 ClientSampled :  
 SB-08

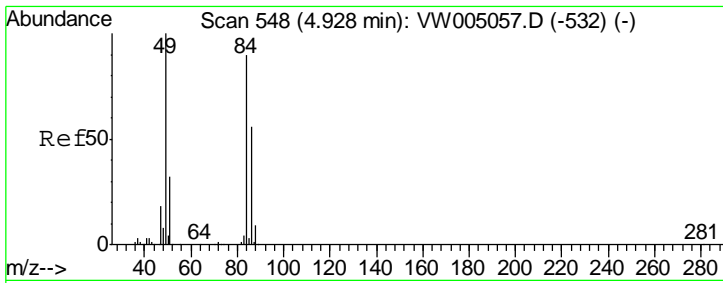
Tgt Ion	Resp	Lower	Upper
53	100		
52	12.6	65.7	98.5#
51	32.7	28.8	43.2



#16  
 Acetone  
 Concen: 186.371 ug/l  
 RT: 4.13 min Scan# 366  
 Delta R.T. -0.00 min  
 Lab File: VW005185.D  
 Acq: 07 Sep 2018 02:31

Tgt Ion	Resp	Lower	Upper
43	100		
58	33.5	29.0	43.6

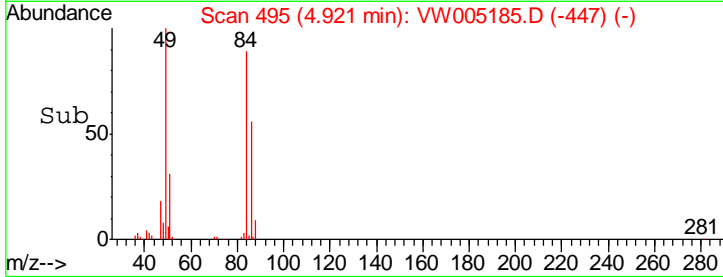
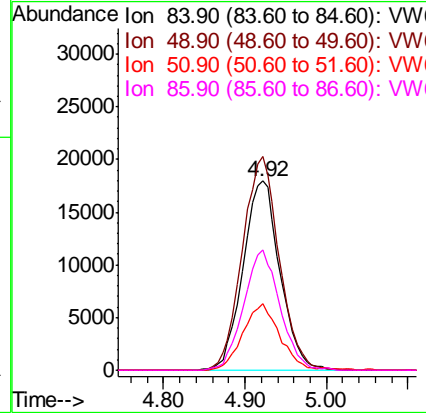
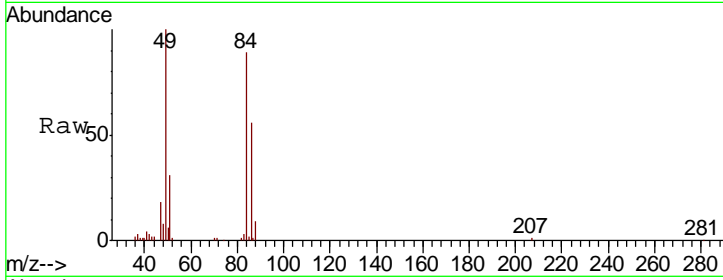




#20  
 Methylene Chloride  
 Concen: 10.130 ug/l  
 RT: 4.92 min Scan# 495  
 Delta R.T. -0.01 min  
 Lab File: VW005185.D  
 Acq: 07 Sep 2018 02:31

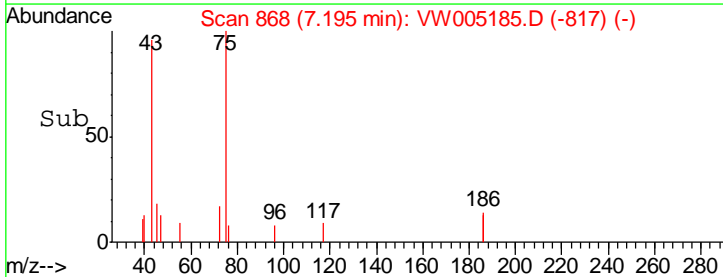
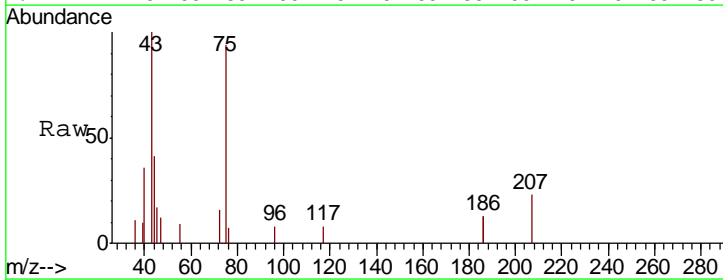
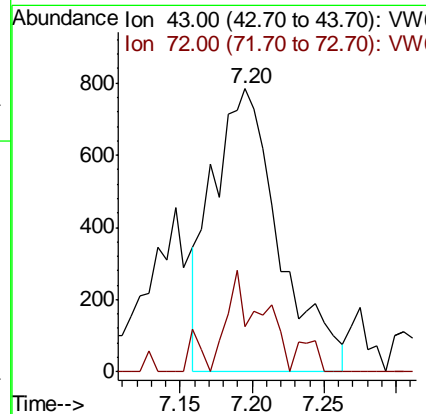
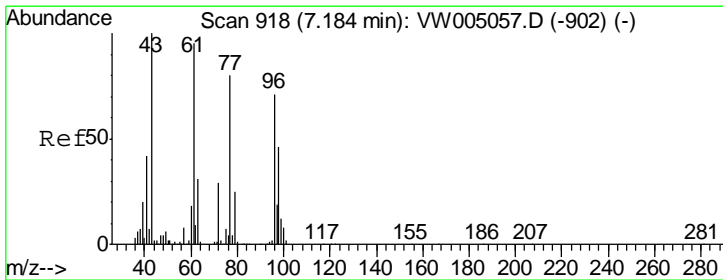
**Instrument :**  
 MSVOA\_W  
**ClientSampled :**  
 SB-08

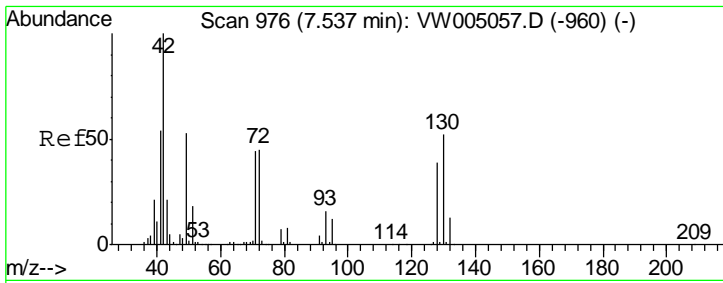
Tgt Ion	Resp	Lower	Upper
84	56616		
49	112.9	88.7	133.1
51	35.5	28.6	42.8
86	63.6	49.4	74.2



#25  
 2-Butanone  
 Concen: 2.281 ug/l  
 RT: 7.20 min Scan# 868  
 Delta R.T. 0.01 min  
 Lab File: VW005185.D  
 Acq: 07 Sep 2018 02:31

Tgt Ion	Resp	Lower	Upper
43	2505		
72	17.8	23.1	34.7#

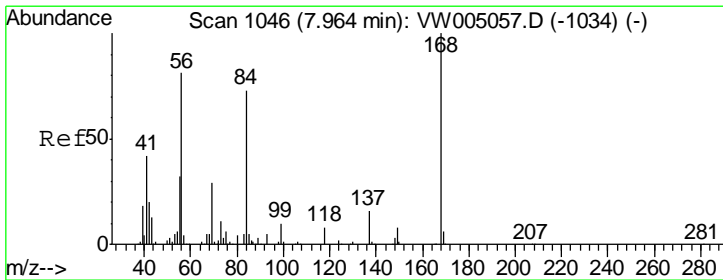
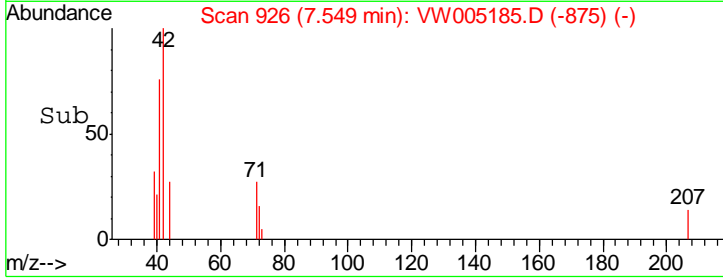
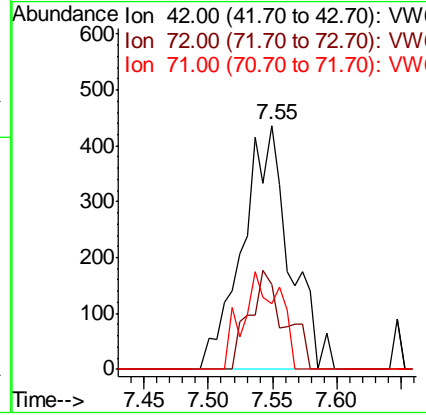
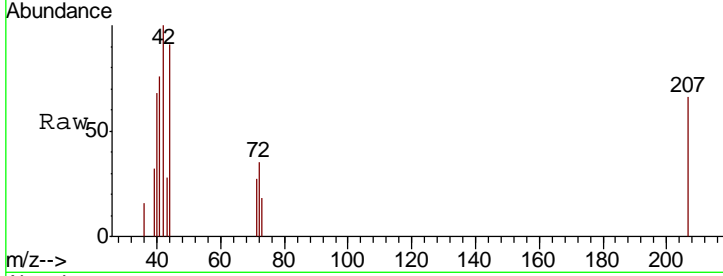




#29  
 Tetrahydrofuran  
 Concen: 1.978 ug/l  
 RT: 7.55 min Scan# 926  
 Delta R.T. 0.01 min  
 Lab File: VW005185.D  
 Acq: 07 Sep 2018 02:31

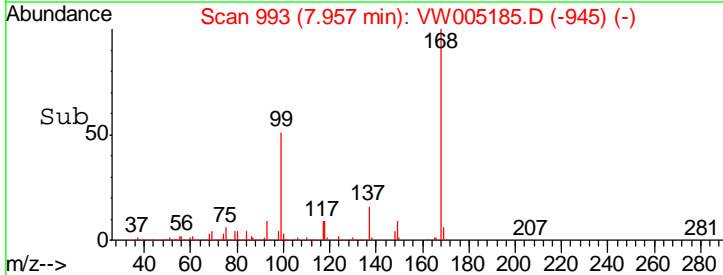
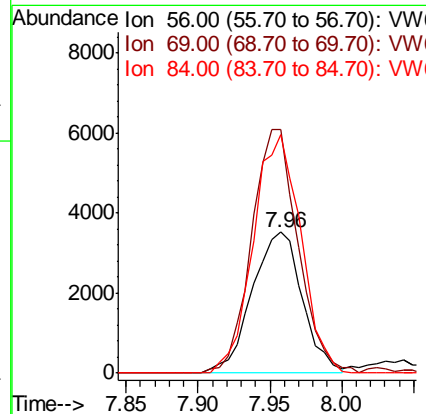
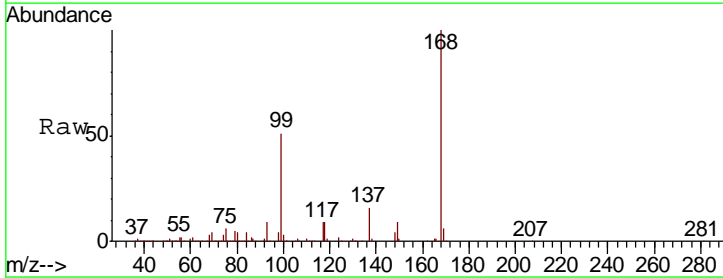
Instrument :  
 MSVOA\_W  
 ClientSampled :  
 SB-08

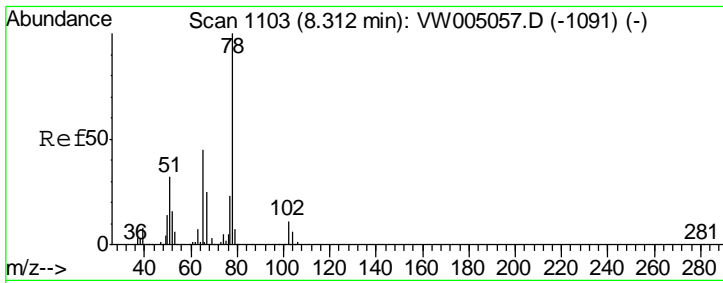
Tgt Ion	Resp	Lower	Upper
42	1110		
72	30.4	37.0	55.4#
71	31.1	35.0	52.6#



#31  
 Cyclohexane  
 Concen: 1.374 ug/l  
 RT: 7.96 min Scan# 993  
 Delta R.T. -0.01 min  
 Lab File: VW005185.D  
 Acq: 07 Sep 2018 02:31

Tgt Ion	Resp	Lower	Upper
56	8519		
69	172.5	28.2	42.2#
84	169.2	71.8	107.8#

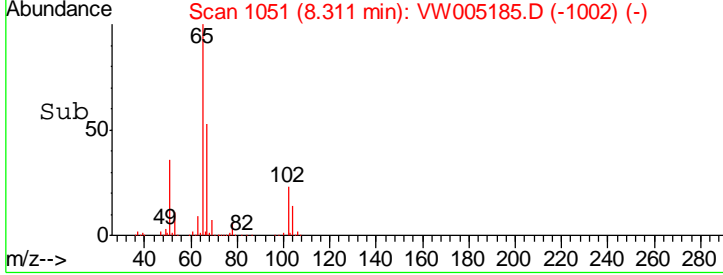
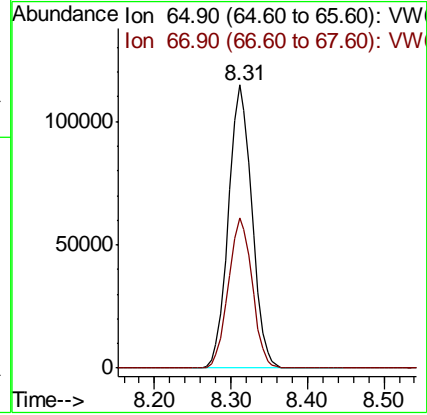
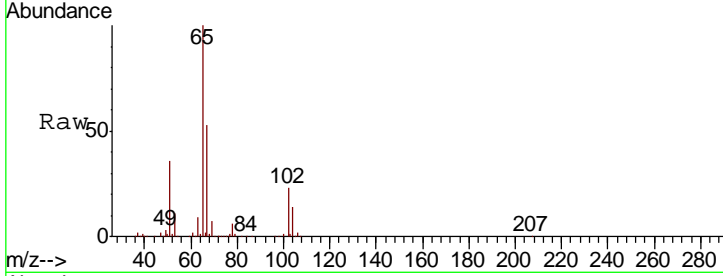




#33  
 1,2-Dichloroethane-d4  
 Concen: 77.109 ug/l  
 RT: 8.31 min Scan# 1051  
 Delta R.T. -0.00 min  
 Lab File: VW005185.D  
 Acq: 07 Sep 2018 02:31

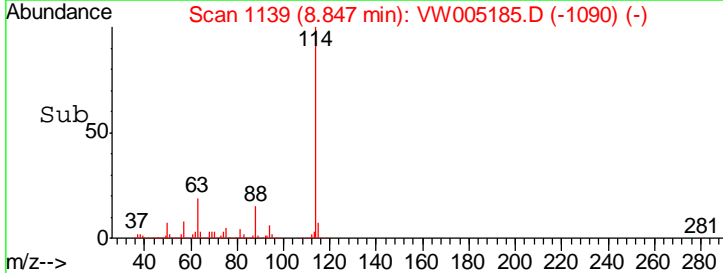
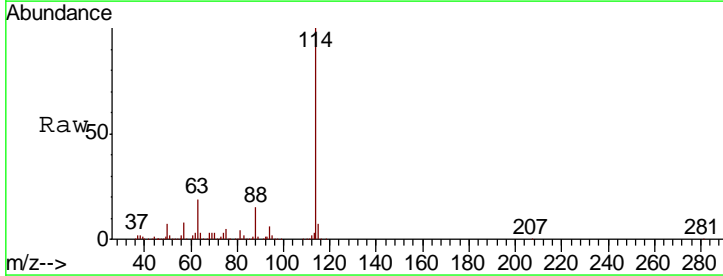
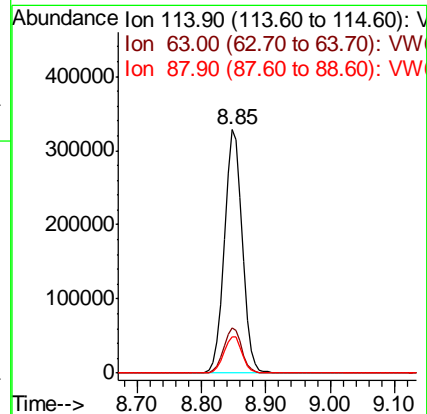
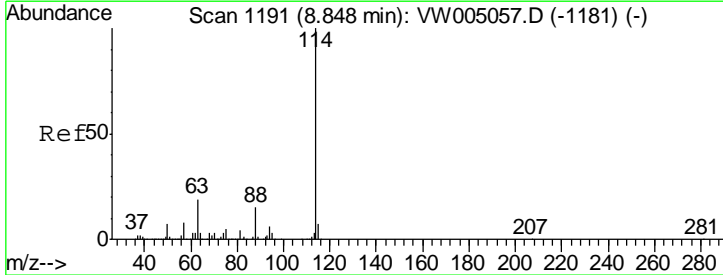
Instrument :  
 MSVOA\_W  
 ClientSampled :  
 SB-08

Tgt Ion: 65 Resp: 243490  
 Ion Ratio Lower Upper  
 65 100  
 67 53.9 0.0 109.4

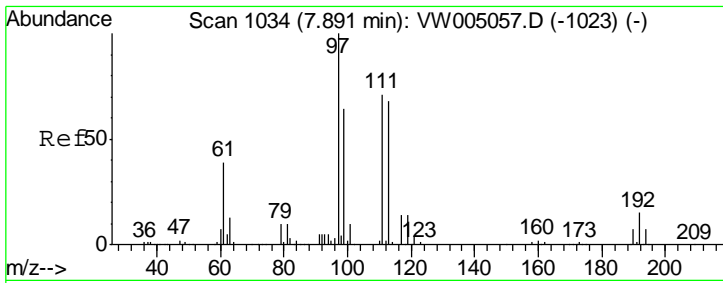


#34  
 1,4-Difluorobenzene  
 Concen: 50.000 ug/l  
 RT: 8.85 min Scan# 1139  
 Delta R.T. -0.00 min  
 Lab File: VW005185.D  
 Acq: 07 Sep 2018 02:31

Tgt Ion: 114 Resp: 646106  
 Ion Ratio Lower Upper  
 114 100  
 63 18.8 0.0 38.0  
 88 14.9 0.0 30.2



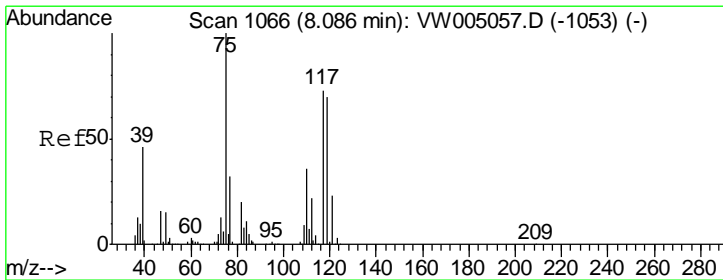
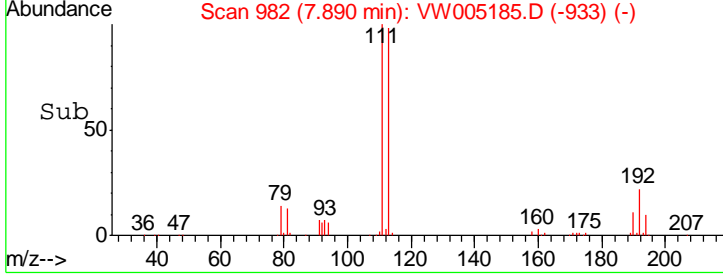
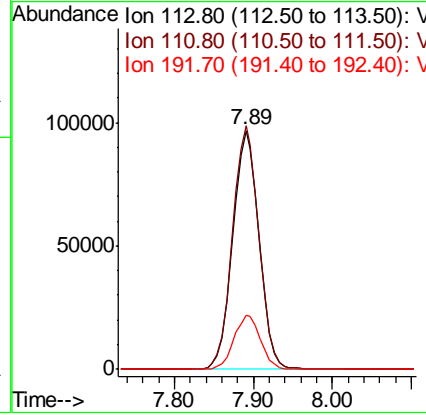
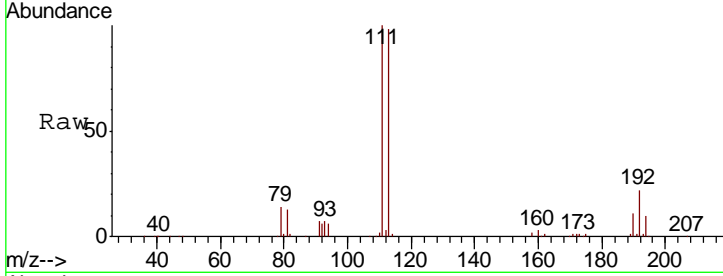




#35  
 Dibromofluoromethane  
 Concen: 59.925 ug/l  
 RT: 7.89 min Scan# 982  
 Delta R.T. -0.00 min  
 Lab File: VW005185.D  
 Acq: 07 Sep 2018 02:31

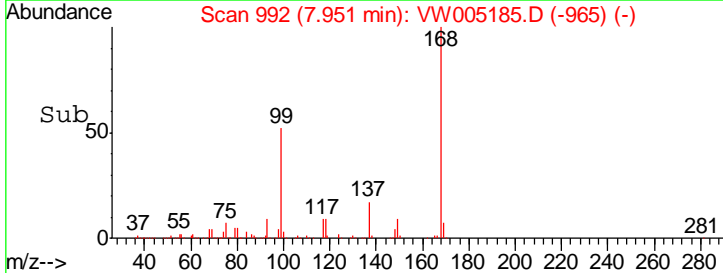
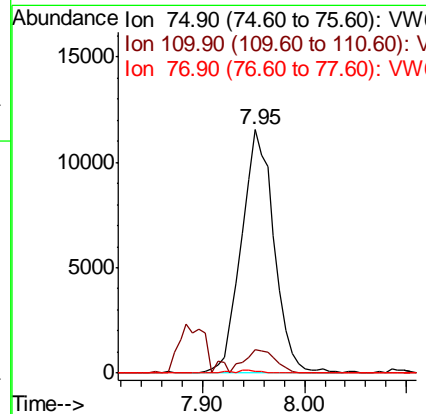
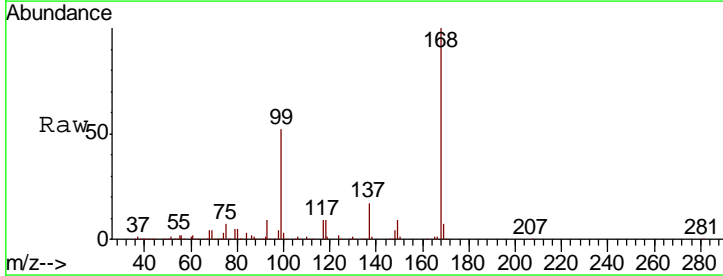
Instrument :  
 MSVOA\_W  
 ClientSampled :  
 SB-08

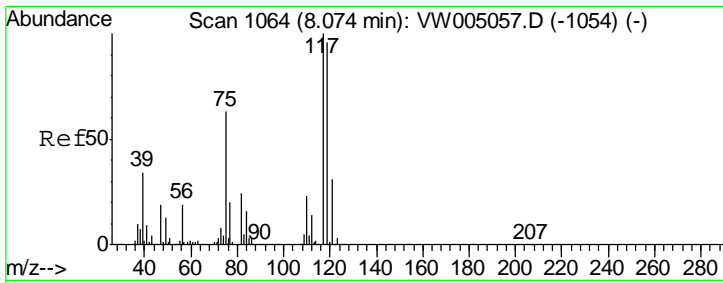
Tgt Ion	Resp	Lower	Upper
113	223743		
113	100		
111	102.2	82.2	123.2
192	22.8	18.1	27.1



#36  
 1,1-Dichloropropene  
 Concen: 4.176 ug/l  
 RT: 7.95 min Scan# 992  
 Delta R.T. -0.13 min  
 Lab File: VW005185.D  
 Acq: 07 Sep 2018 02:31

Tgt Ion	Resp	Lower	Upper
75	25698		
75	100		
110	9.1	18.9	56.7#
77	0.0	25.5	38.3#

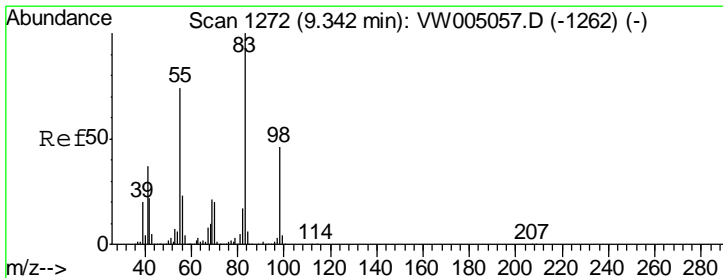
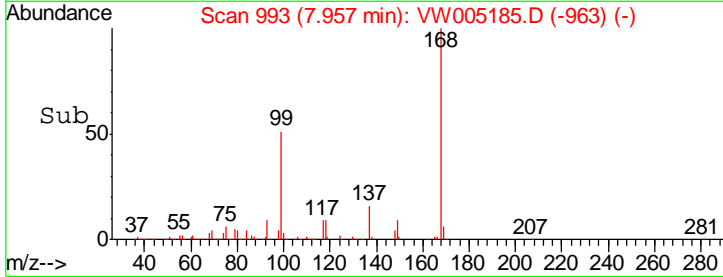
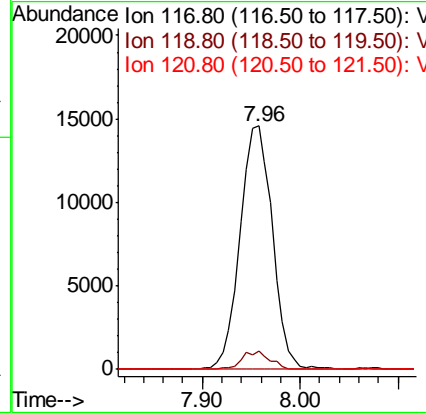
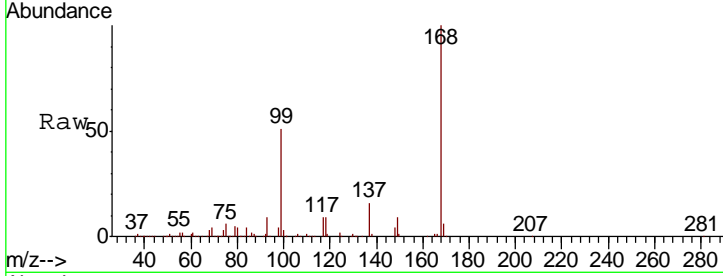




#38  
 Carbon Tetrachloride  
 Concen: 5.721 ug/l  
 RT: 7.96 min Scan# 993  
 Delta R.T. -0.12 min  
 Lab File: VW005185.D  
 Acq: 07 Sep 2018 02:31

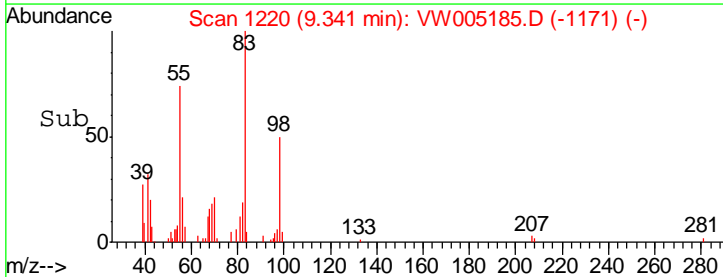
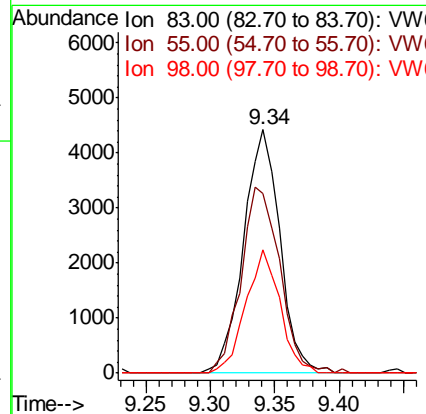
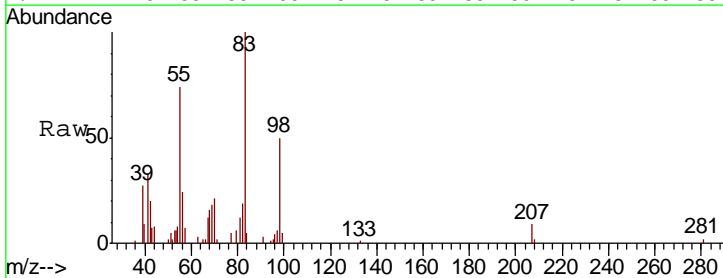
Instrument :  
 MSVOA\_W  
 ClientSampled :  
 SB-08

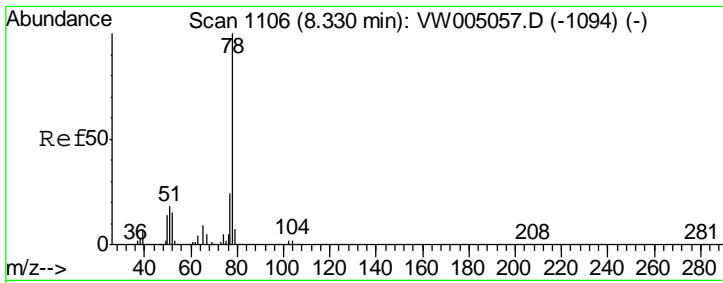
Tgt Ion	Resp	Lower	Upper
117	100		
119	7.3	76.6	115.0#
121	0.0	24.8	37.2#



#39  
 Methylcyclohexane  
 Concen: 1.160 ug/l  
 RT: 9.34 min Scan# 1220  
 Delta R.T. -0.00 min  
 Lab File: VW005185.D  
 Acq: 07 Sep 2018 02:31

Tgt Ion	Resp	Lower	Upper
83	100		
55	74.0	58.9	88.3
98	50.5	36.8	55.2

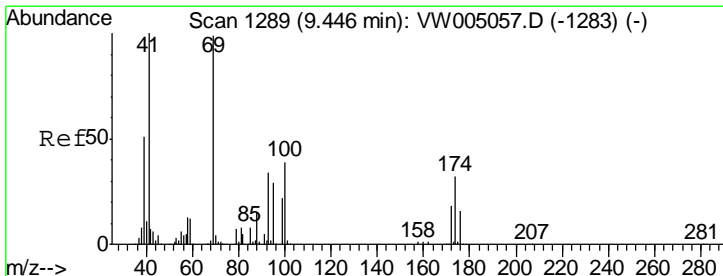
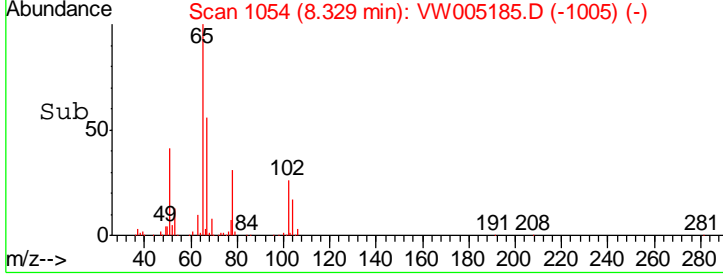
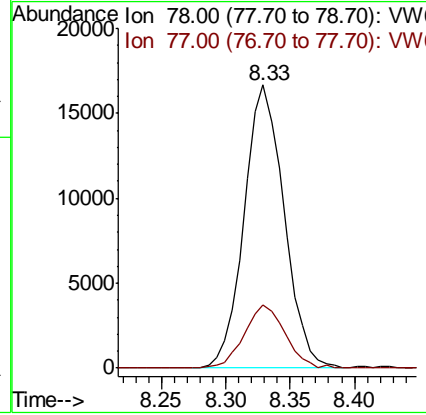
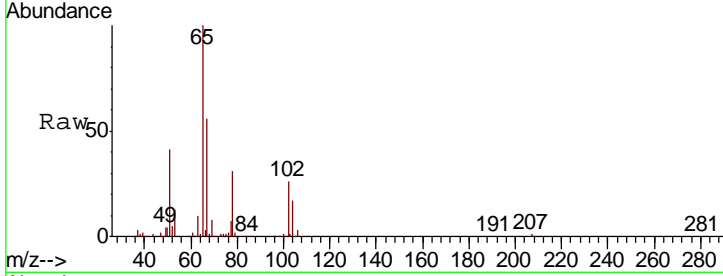




#40  
Benzene  
Concen: 1.900 ug/l  
RT: 8.33 min Scan# 1054  
Delta R.T. -0.00 min  
Lab File: VW005185.D  
Acq: 07 Sep 2018 02:31

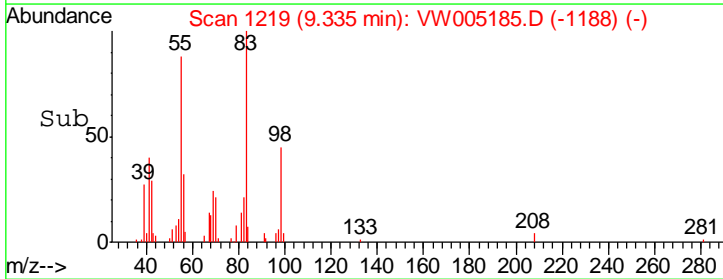
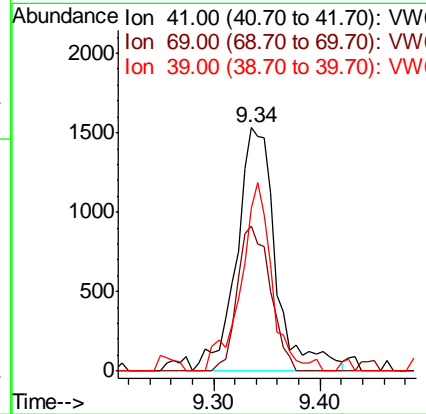
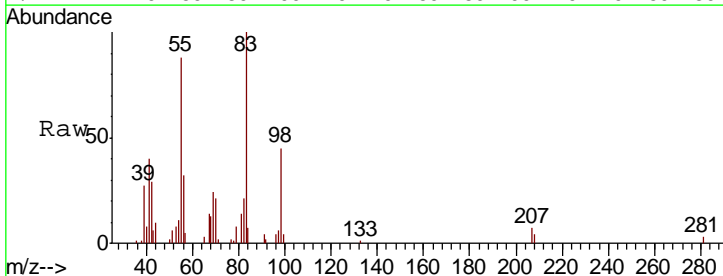
Instrument : MSVOA\_W  
ClientSampled : SB-08

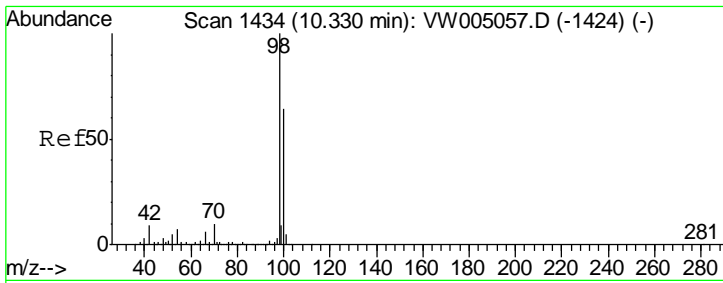
Tgt Ion	Resp	Lower	Upper
78	35797		
77	22.1	19.4	29.0



#48  
Methyl methacrylate  
Concen: 1.951 ug/l  
RT: 9.34 min Scan# 1219  
Delta R.T. -0.11 min  
Lab File: VW005185.D  
Acq: 07 Sep 2018 02:31

Tgt Ion	Resp	Lower	Upper
41	3933		
69	50.6	80.4	120.6#
39	61.8	43.5	65.3

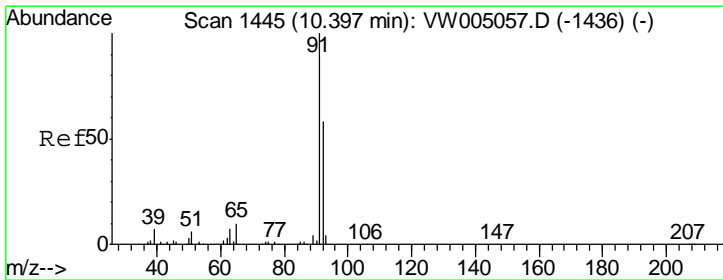
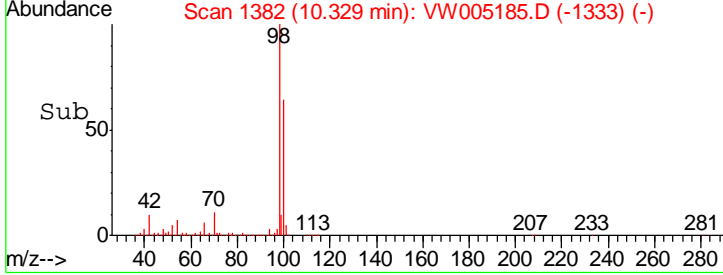
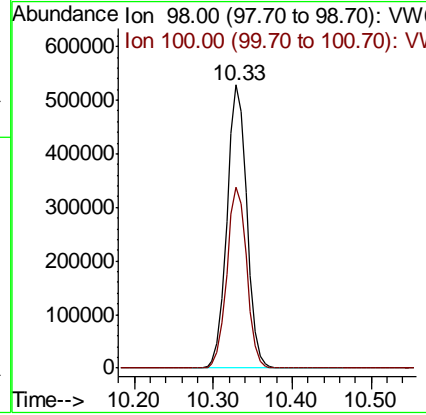
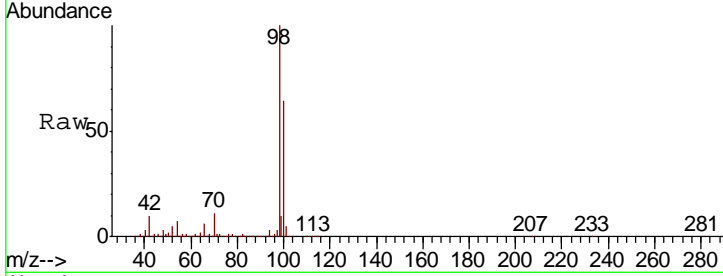




#50  
 Toluene-d8  
 Concen: 53.664 ug/l  
 RT: 10.33 min Scan# 1382  
 Delta R.T. -0.00 min  
 Lab File: VW005185.D  
 Acq: 07 Sep 2018 02:31

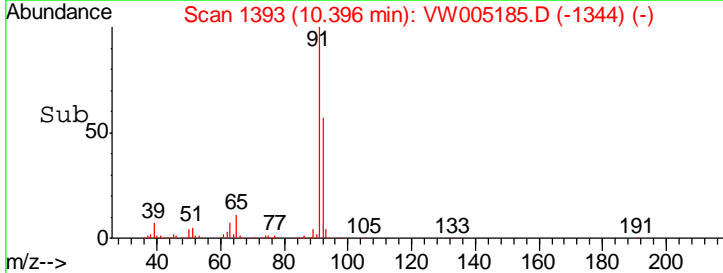
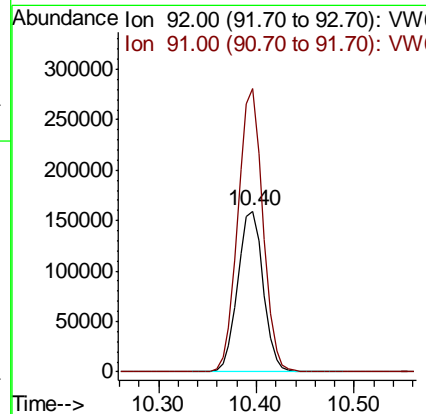
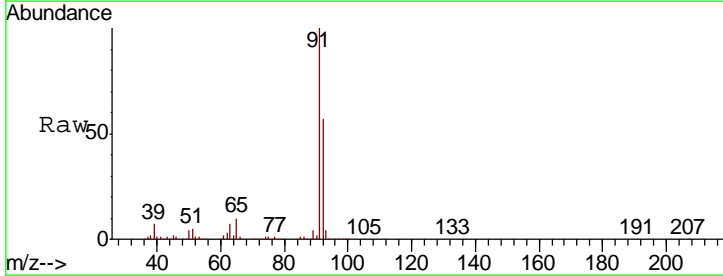
Instrument : MSVOA\_W  
 ClientSampled : SB-08

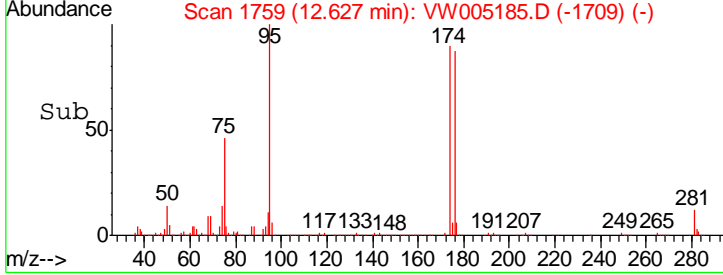
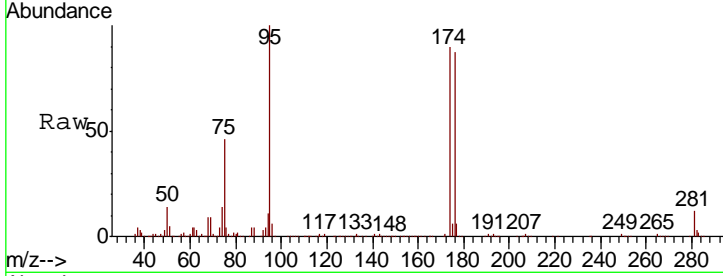
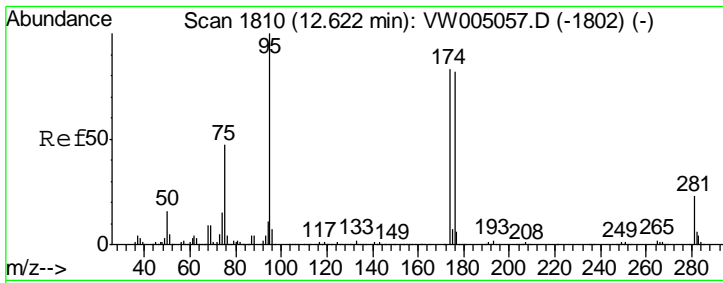
Tgt Ion: 98 Resp: 923255  
 Ion Ratio Lower Upper  
 98 100  
 100 64.1 51.7 77.5



#52  
 Toluene  
 Concen: 22.645 ug/l  
 RT: 10.40 min Scan# 1393  
 Delta R.T. -0.00 min  
 Lab File: VW005185.D  
 Acq: 07 Sep 2018 02:31

Tgt Ion: 92 Resp: 289044  
 Ion Ratio Lower Upper  
 92 100  
 91 172.3 139.2 208.8

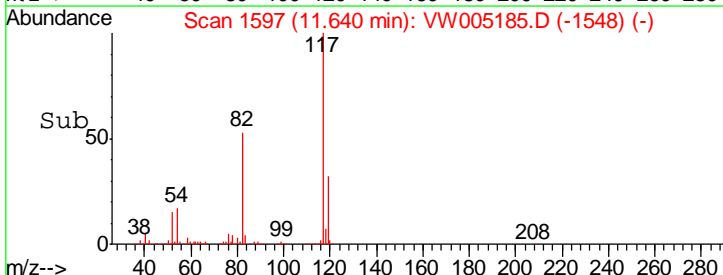
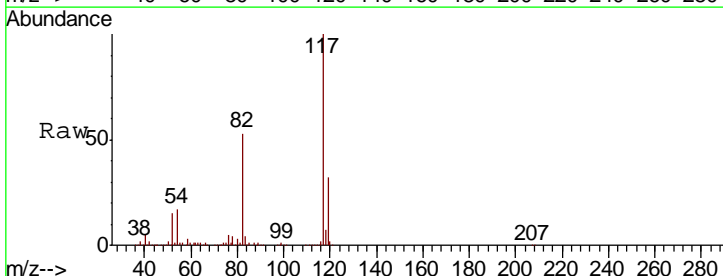
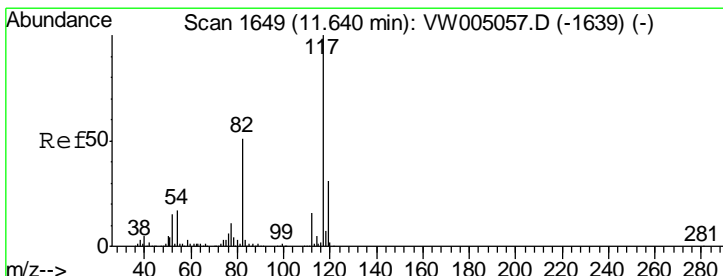
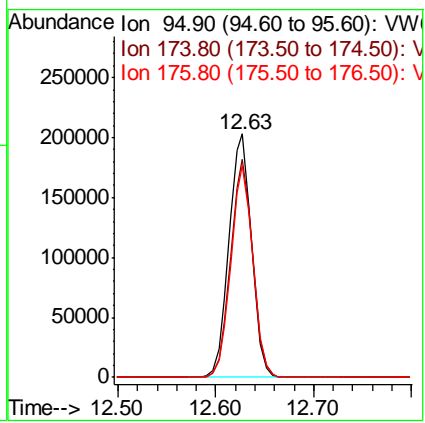




#62  
 4-Bromofluorobenzene  
 Concen: 53.155 ug/l  
 RT: 12.63 min Scan# 1759  
 Delta R.T. 0.01 min  
 Lab File: VW005185.D  
 Acq: 07 Sep 2018 02:31

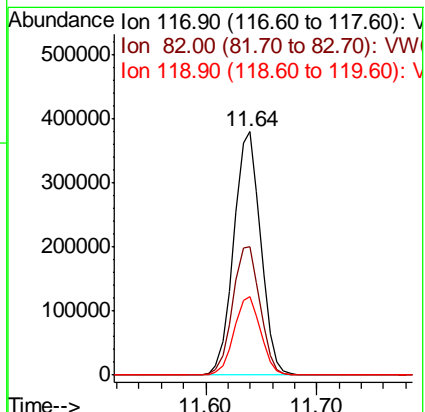
Instrument :  
 MSVOA\_W  
 ClientSampled :  
 SB-08

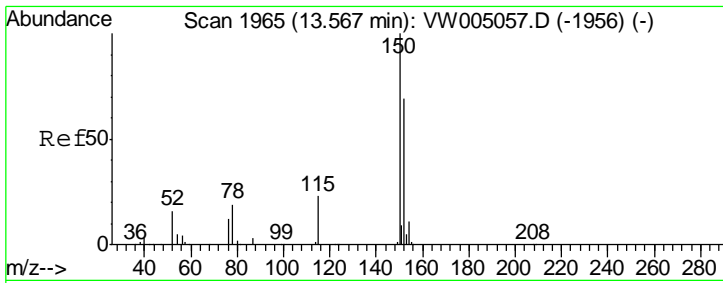
Tgt Ion	Resp	Lower	Upper
95	322464		
174	88.0	0.0	173.4
176	84.9	0.0	167.4



#63  
 Chlorobenzene-d5  
 Concen: 50.000 ug/l  
 RT: 11.64 min Scan# 1597  
 Delta R.T. -0.00 min  
 Lab File: VW005185.D  
 Acq: 07 Sep 2018 02:31

Tgt Ion	Resp	Lower	Upper
117	636017		
82	52.9	40.9	61.3
119	32.1	24.9	37.3

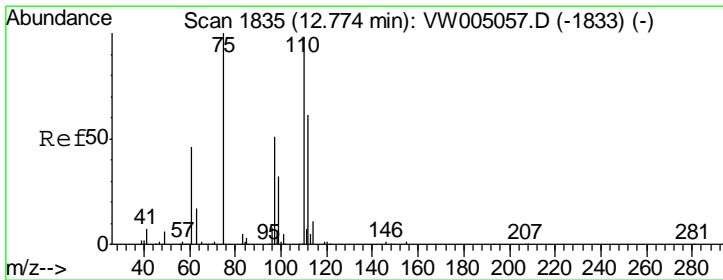
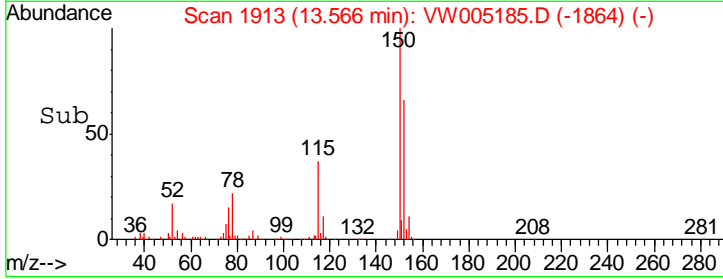
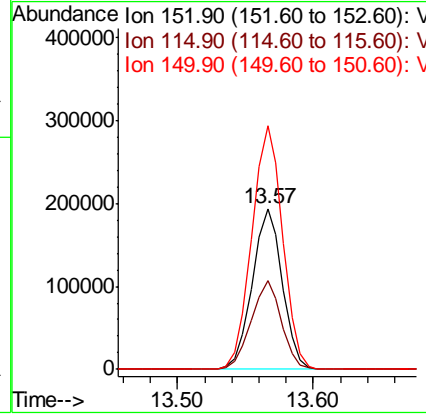
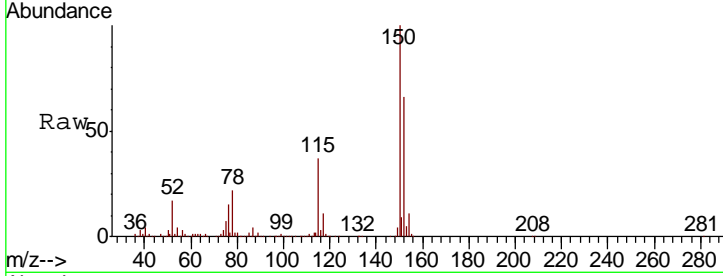




#72  
 1,4-Dichlorobenzene-d4  
 Concen: 50.000 ug/l  
 RT: 13.57 min Scan# 1913  
 Delta R.T. -0.00 min  
 Lab File: VW005185.D  
 Acq: 07 Sep 2018 02:31

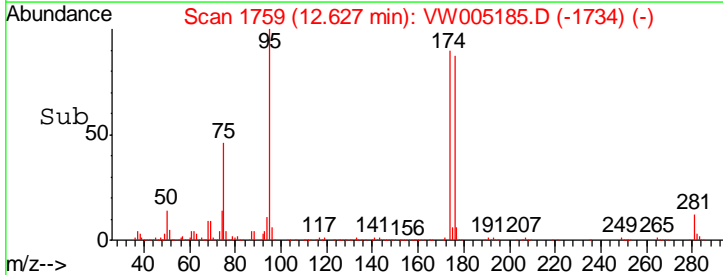
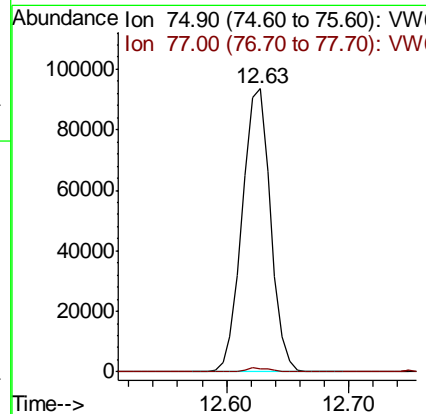
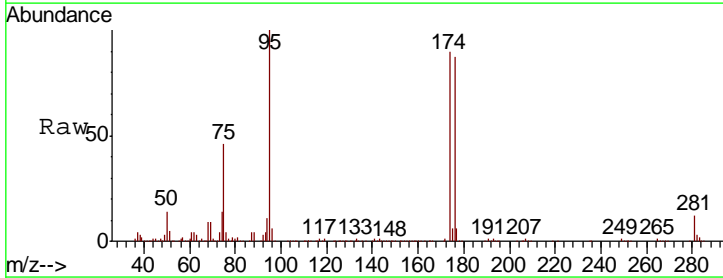
Instrument :  
 MSVOA\_W  
 ClientSampled :  
 SB-08

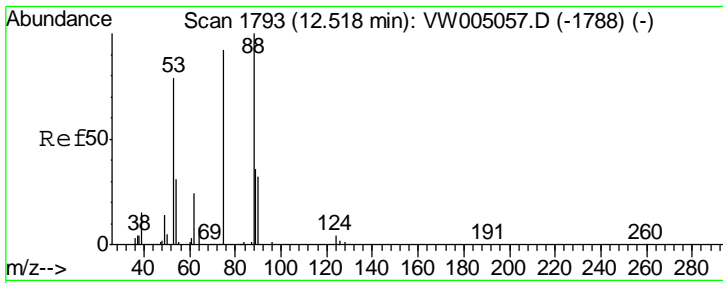
Tgt Ion	Resp	Lower	Upper
152	100		
115	55.3	27.8	83.4
150	155.4	0.0	351.4



#76  
 1,2,3-Trichloropropane  
 Concen: 66.684 ug/l  
 RT: 12.63 min Scan# 1759  
 Delta R.T. -0.15 min  
 Lab File: VW005185.D  
 Acq: 07 Sep 2018 02:31

Tgt Ion	Resp	Lower	Upper
75	100		
77	1.3	0.0	0.0#

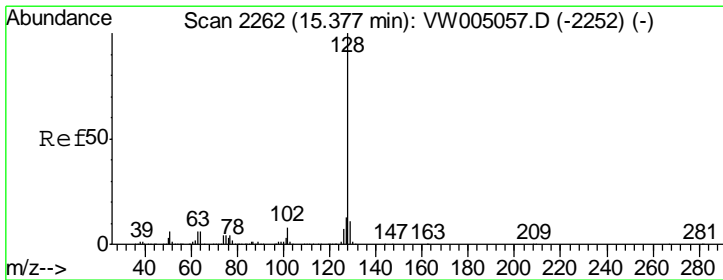
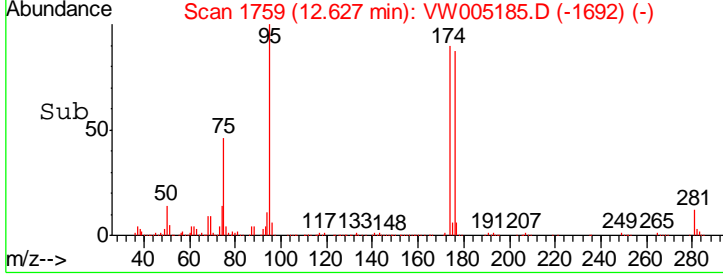
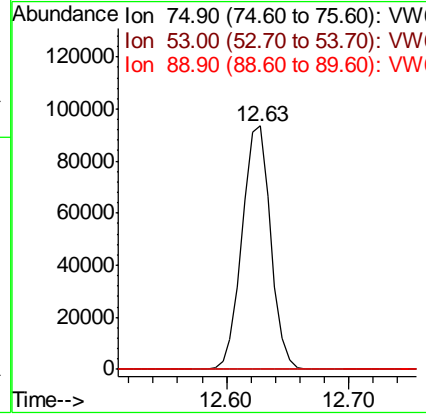
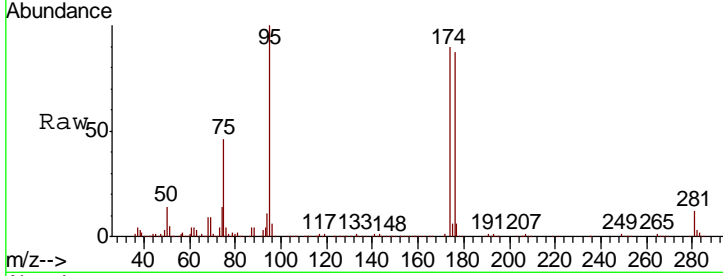




#81  
 trans-1,4-Dichloro-2-butene  
 Concen: 160.501 ug/l  
 RT: 12.63 min Scan# 1759  
 Delta R.T. 0.11 min  
 Lab File: VW005185.D  
 Acq: 07 Sep 2018 02:31

Instrument :  
 MSVOA\_W  
 ClientSampled :  
 SB-08

Tgt Ion	Resp	Lower	Upper
75	100		
53	0.2	69.8	104.8#
89	0.0	36.0	54.0#



#95  
 Naphthalene  
 Concen: 4.250 ug/l  
 RT: 15.38 min Scan# 2211  
 Delta R.T. 0.01 min  
 Lab File: VW005185.D  
 Acq: 07 Sep 2018 02:31

Tgt Ion	Resp	Lower	Upper
128	100		
127	17.3	10.4	15.6#
129	14.0	8.7	13.1#

