

Data File : VW012772.D  
 Acq On : 08 Sep 2019 16:27  
 Operator : SY/VA  
 Sample : K4603-09  
 Misc : 6.92G/5ML/MSVOA\_W/SOIL  
 ALS Vial : 13 Sample Multiplier: 1

Instrument :  
 MSVOA\_W  
 ClientSampleId :  
 PAR-E3-(3.11)

Quant Time: Sep 09 05:59:08 2019  
 Quant Method : Z:\VOASRV\HPCHEM1\MSVOA\_W\METHOD\82W090719S.M  
 Quant Title : SW846 8260  
 QLast Update : Sun Sep 08 05:04:40 2019  
 Response via : Initial Calibration

Internal Standards	R.T.	QIon	Response	Conc	Units	Dev(Min)
1) Pentafluorobenzene	7.95	168	192049	50.00	ug/l	0.00
34) 1,4-Difluorobenzene	8.84	114	296034	50.00	ug/l	0.00
63) Chlorobenzene-d5	11.63	117	237088	50.00	ug/l	0.00
72) 1,4-Dichlorobenzene-d4	13.55	152	93333	50.00	ug/l	0.00

System Monitoring Compounds

33) 1,2-Dichloroethane-d4	8.31	65	114916	53.55	ug/l	0.00
Spiked Amount				50.000		
				Recovery	=	107.10%
35) Dibromofluoromethane	7.88	113	88199	50.11	ug/l	0.00
Spiked Amount				50.000		
				Recovery	=	100.22%
50) Toluene-d8	10.32	98	343651	49.84	ug/l	0.00
Spiked Amount				50.000		
				Recovery	=	99.68%
62) 4-Bromofluorobenzene	12.62	95	105644	42.20	ug/l	0.00
Spiked Amount				50.000		
				Recovery	=	84.40%

Target Compounds

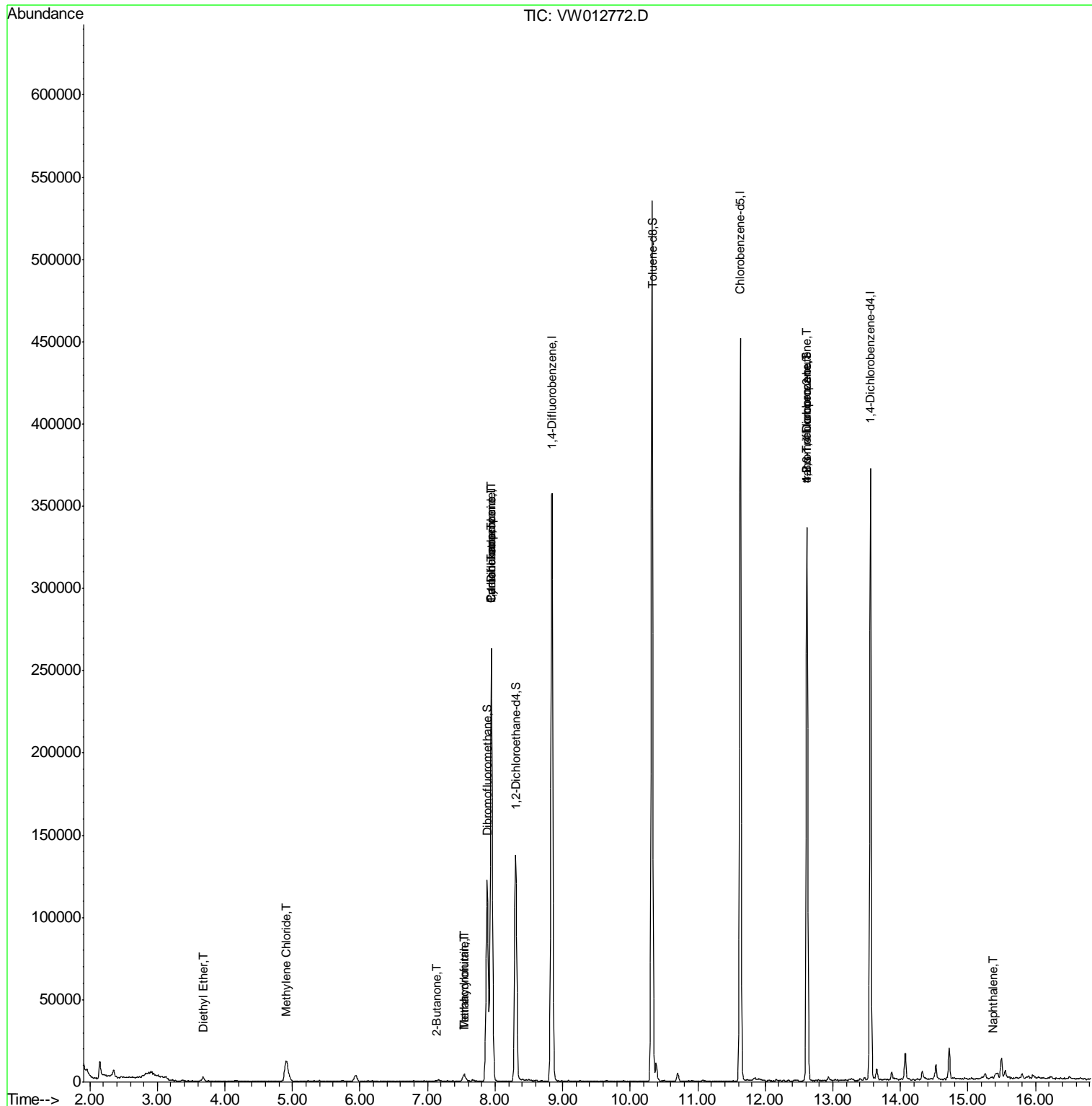
						Qvalue
8) Diethyl Ether	3.67	74	1243	1.381	ug/l	95
20) Methylene Chloride	4.90	84	10034	5.483	ug/l	93
25) 2-Butanone	7.13	43	72	19.757	ug/l #	53
29) Tetrahydrofuran	7.54	42	3813	8.071	ug/l #	90
31) Cyclohexane	7.95	56	4710	1.493	ug/l #	1
36) 1,1-Dichloropropene	7.94	75	15368	5.843	ug/l #	52
38) Carbon Tetrachloride	7.95	117	19584	7.553	ug/l #	16
41) Methacrylonitrile	7.54	41	2703	6.028	ug/l #	56
76) 1,2,3-Trichloropropane	12.62	75	57374	60.117	ug/l #	100
81) trans-1,4-Dichloro-2-buten	12.62	75	57374	127.152	ug/l #	6
95) Naphthalene	15.37	128	387	4.529	ug/l #	69

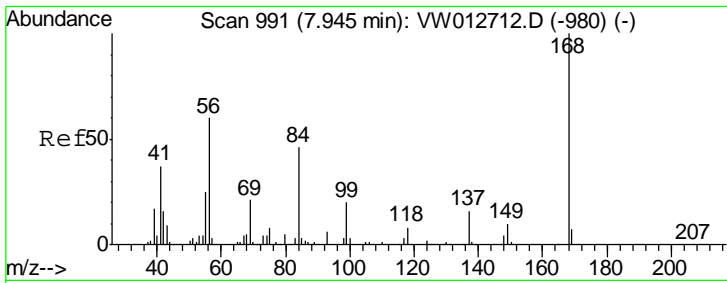
(#) = qualifier out of range (m) = manual integration (+) = signals summed

Data File : VW012772.D  
Acq On : 08 Sep 2019 16:27  
Operator : SY/VA  
Sample : K4603-09  
Misc : 6.92G/5ML/MSVOA\_W/SOIL  
ALS Vial : 13 Sample Multiplier: 1

Instrument :  
MSVOA\_W  
Client Sampled :  
PAR-E3-(3.11)

Quant Time: Sep 09 05:59:08 2019  
Quant Method : Z:\VOASRV\HPCHEM1\MSVOA\_W\METHOD\82W090719S.M  
Quant Title : SW846 8260  
QLast Update : Sun Sep 08 05:04:40 2019  
Response via : Initial Calibration

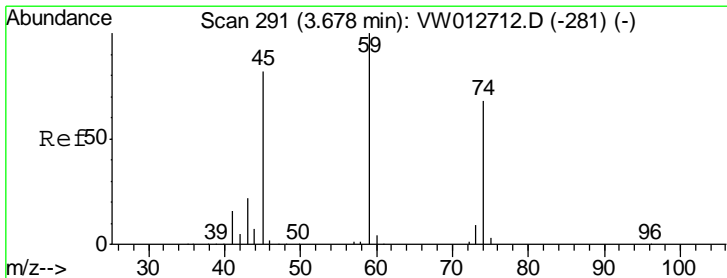
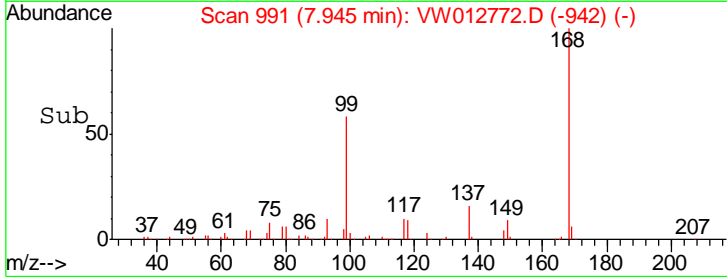
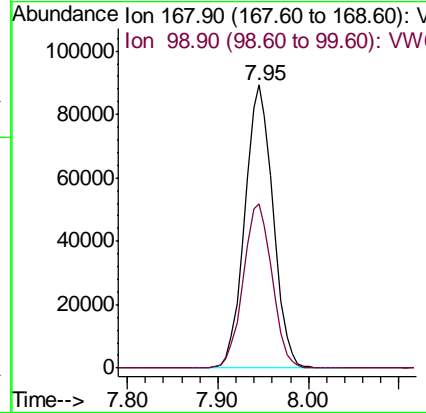
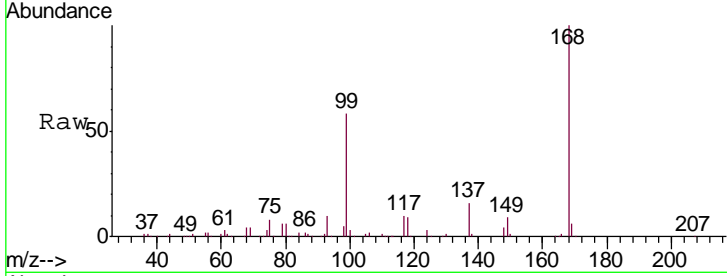




#1  
 Pentafluorobenzene  
 Concen: 50.000 ug/l  
 RT: 7.95 min Scan# 991  
 Delta R.T. 0.00 min  
 Lab File: VW012772.D  
 Acq: 08 Sep 2019 16:27

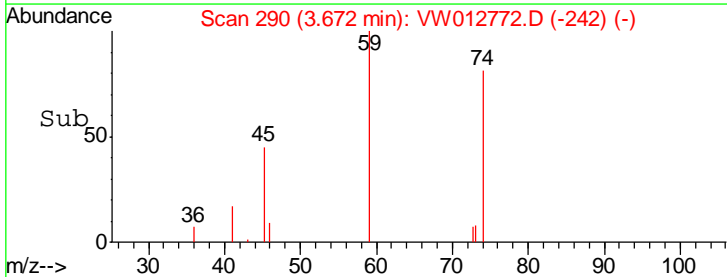
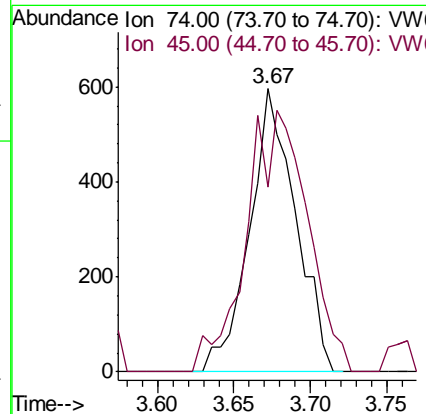
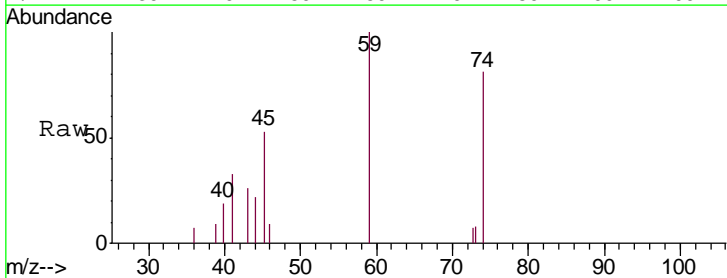
Instrument :  
 MSVOA\_W  
 ClientSampleId :  
 PAR-E3-(3.11)

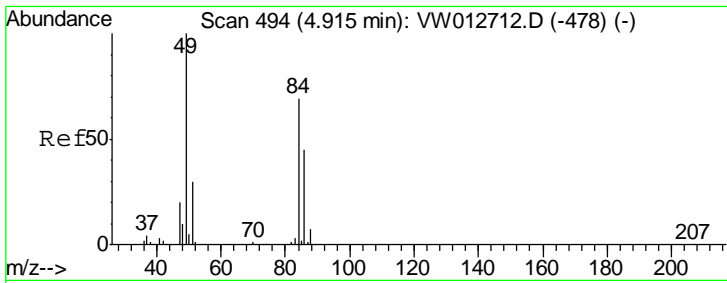
Tgt Ion: 168 Resp: 192049  
 Ion Ratio Lower Upper  
 168 100  
 99 58.0 47.8 71.6



#8  
 Diethyl Ether  
 Concen: 1.381 ug/l  
 RT: 3.67 min Scan# 290  
 Delta R.T. -0.01 min  
 Lab File: VW012772.D  
 Acq: 08 Sep 2019 16:27

Tgt Ion: 74 Resp: 1243  
 Ion Ratio Lower Upper  
 74 100  
 45 123.1 58.8 176.4

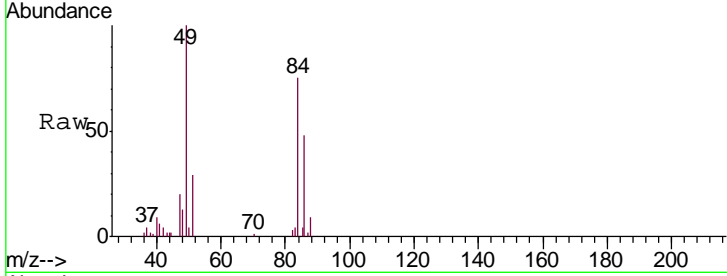




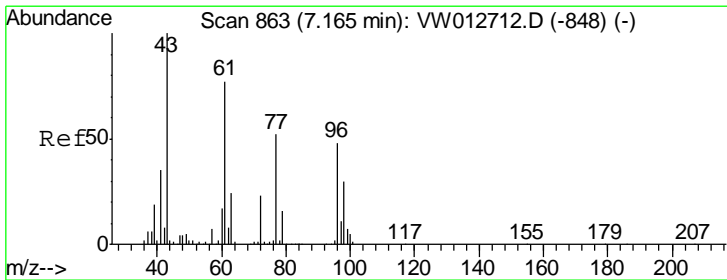
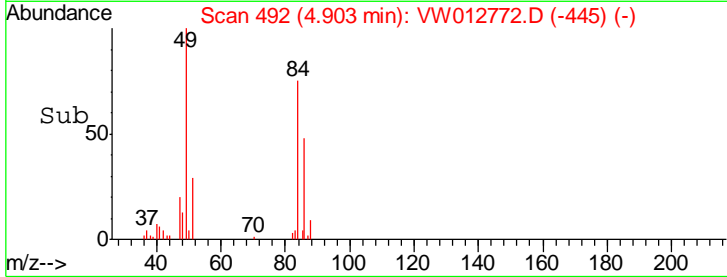
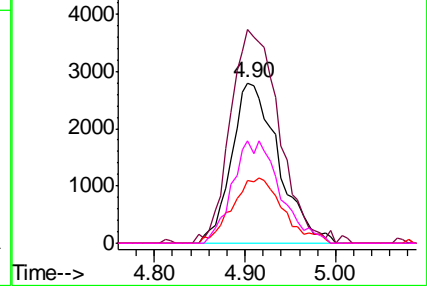
#20  
 Methylene Chloride  
 Concen: 5.483 ug/l  
 RT: 4.90 min Scan# 492  
 Delta R.T. -0.01 min  
 Lab File: VW012772.D  
 Acq: 08 Sep 2019 16:27

Instrument :  
 MSVOA\_W  
 ClientSampled :  
 PAR-E3-(3.11)

Tgt Ion	Resp	Lower	Upper
84	10034		
49	133.3	115.4	173.0
51	39.0	34.9	52.3
86	63.6	52.2	78.4

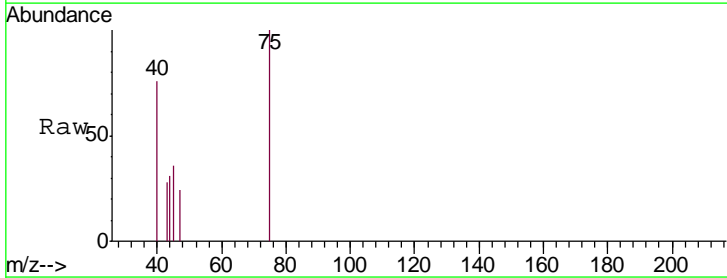


Abundance Ion 83.90 (83.60 to 84.60): VW  
 Ion 48.90 (48.60 to 49.60): VW  
 Ion 50.90 (50.60 to 51.60): VW  
 Ion 85.90 (85.60 to 86.60): VW

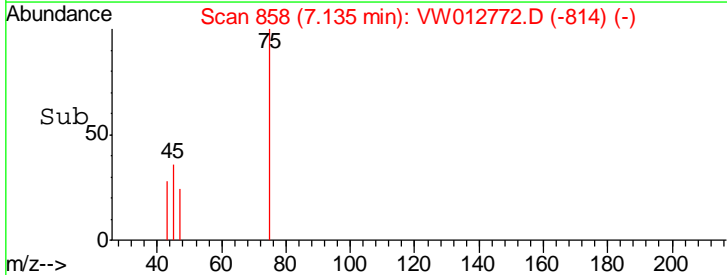
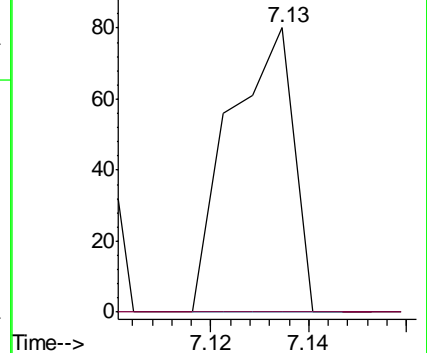


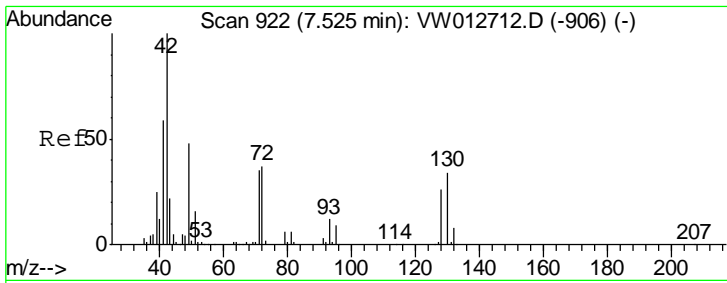
#25  
 2-Butanone  
 Concen: 19.757 ug/l  
 RT: 7.13 min Scan# 858  
 Delta R.T. -0.03 min  
 Lab File: VW012772.D  
 Acq: 08 Sep 2019 16:27

Tgt Ion	Resp	Lower	Upper
43	72		
72	0.0	18.0	27.0#



Abundance Ion 43.00 (42.70 to 43.70): VW  
 Ion 72.00 (71.70 to 72.70): VW

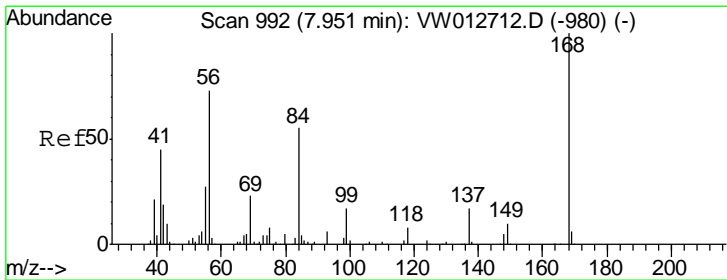
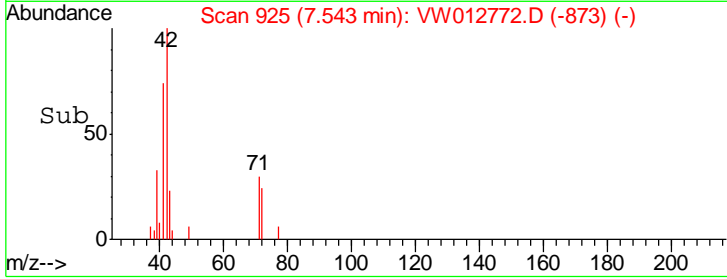
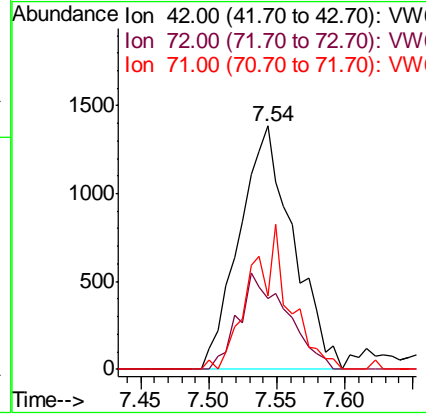
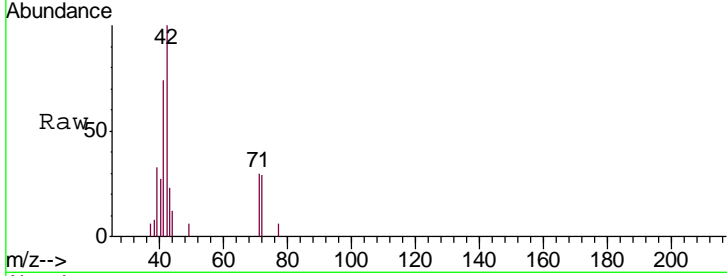




#29  
 Tetrahydrofuran  
 Concen: 8.071 ug/l  
 RT: 7.54 min Scan# 925  
 Delta R.T. 0.02 min  
 Lab File: VW012772.D  
 Acq: 08 Sep 2019 16:27

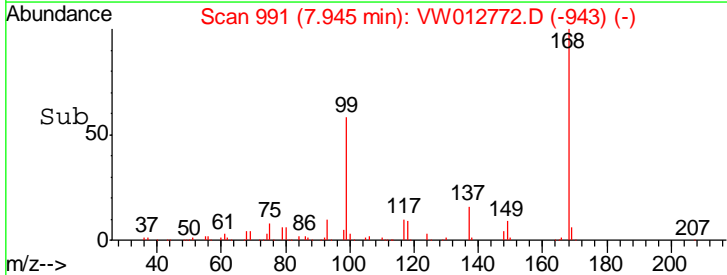
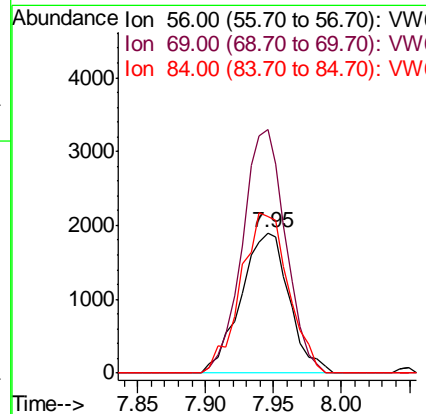
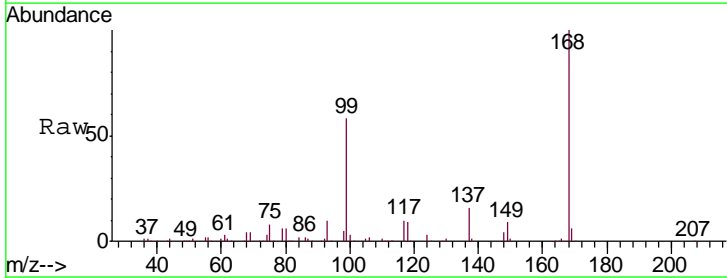
Instrument :  
 MSVOA\_W  
 ClientSampleId :  
 PAR-E3-(3.11)

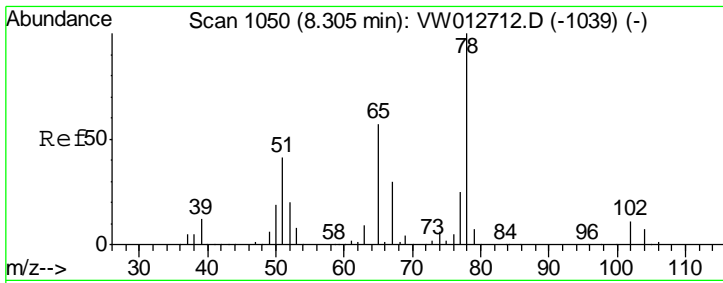
Tgt Ion	Resp	Lower	Upper
42	3813		
72	35.7	28.4	42.6
71	22.3	27.1	40.7#



#31  
 Cyclohexane  
 Concen: 1.493 ug/l  
 RT: 7.95 min Scan# 991  
 Delta R.T. -0.01 min  
 Lab File: VW012772.D  
 Acq: 08 Sep 2019 16:27

Tgt Ion	Resp	Lower	Upper
56	4710		
69	173.9	25.7	38.5#
84	112.0	60.4	90.6#

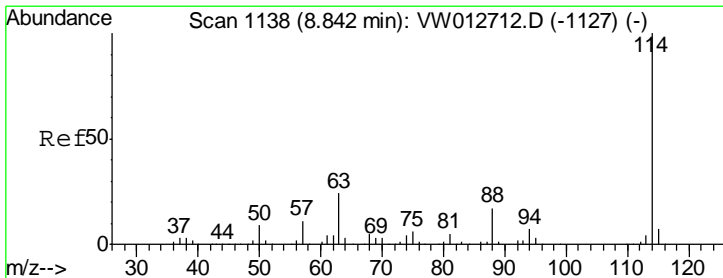
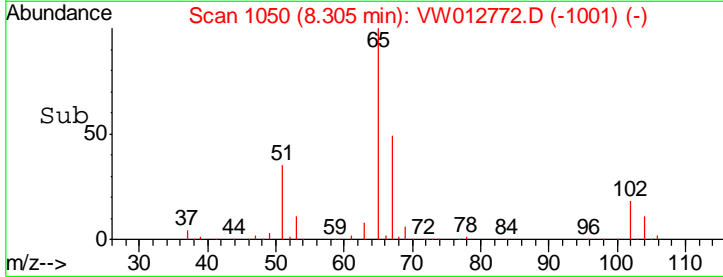
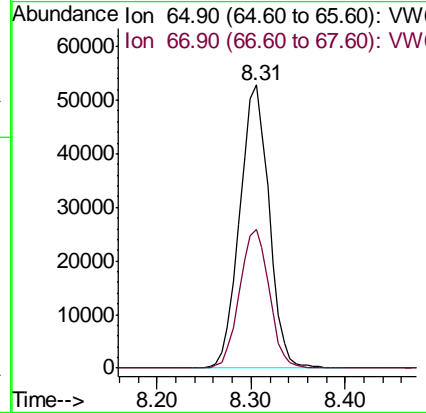
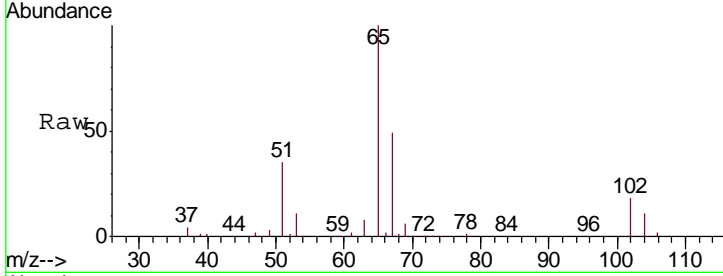




#33  
 1,2-Dichloroethane-d4  
 Concen: 53.553 ug/l  
 RT: 8.31 min Scan# 1050  
 Delta R.T. 0.00 min  
 Lab File: VW012772.D  
 Acq: 08 Sep 2019 16:27

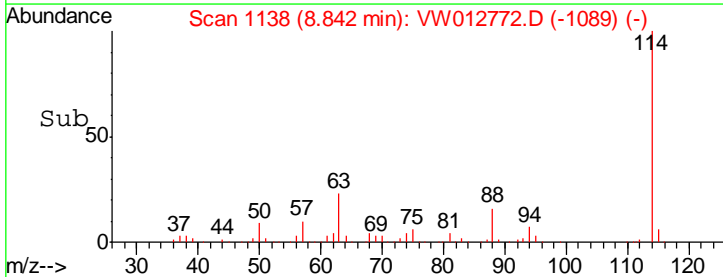
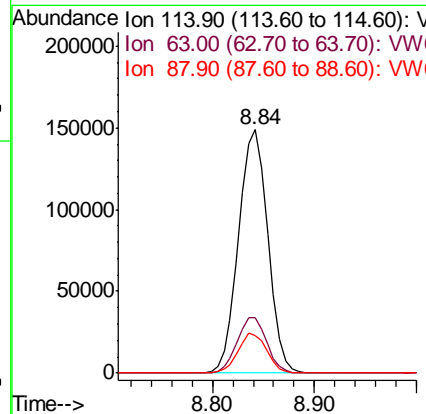
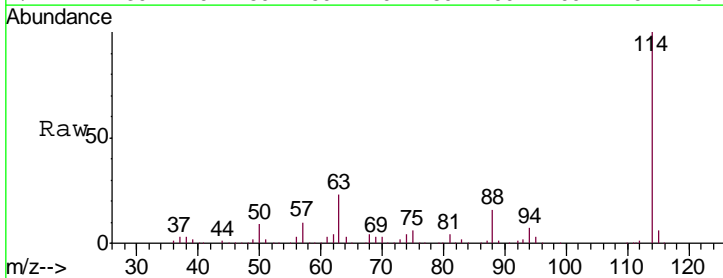
Instrument :  
 MSVOA\_W  
 ClientSampleId :  
 PAR-E3-(3.11)

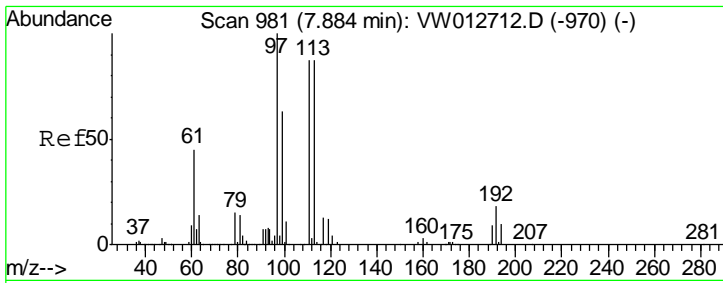
Tgt Ion: 65 Resp: 114916  
 Ion Ratio Lower Upper  
 65 100  
 67 49.6 0.0 101.8



#34  
 1,4-Difluorobenzene  
 Concen: 50.000 ug/l  
 RT: 8.84 min Scan# 1138  
 Delta R.T. 0.00 min  
 Lab File: VW012772.D  
 Acq: 08 Sep 2019 16:27

Tgt Ion: 114 Resp: 296034  
 Ion Ratio Lower Upper  
 114 100  
 63 22.7 0.0 47.2  
 88 15.6 0.0 34.0

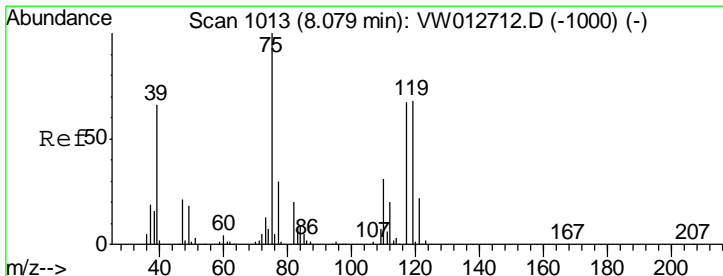
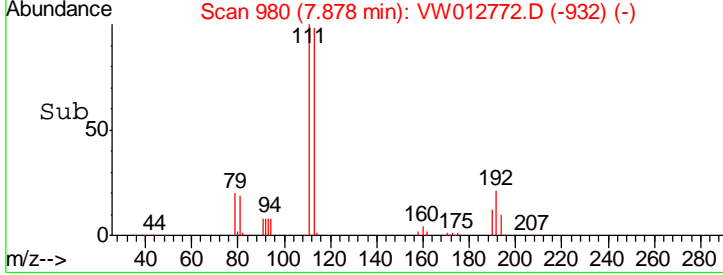
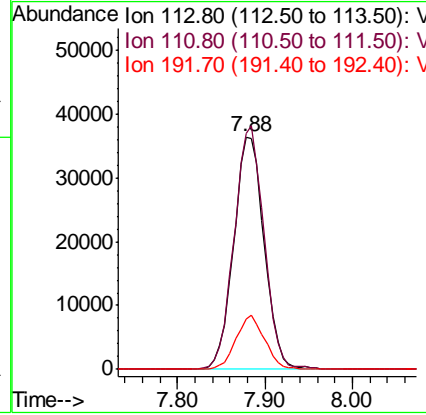
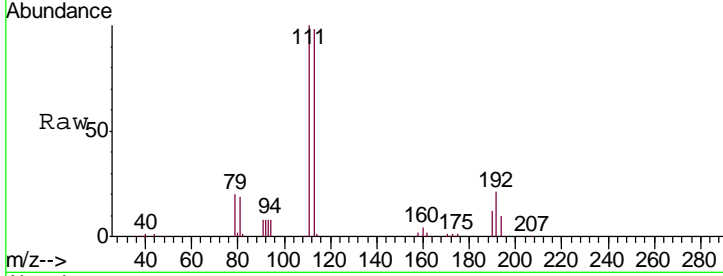




#35  
 Dibromofluoromethane  
 Concen: 50.113 ug/l  
 RT: 7.88 min Scan# 980  
 Delta R.T. -0.01 min  
 Lab File: VW012772.D  
 Acq: 08 Sep 2019 16:27

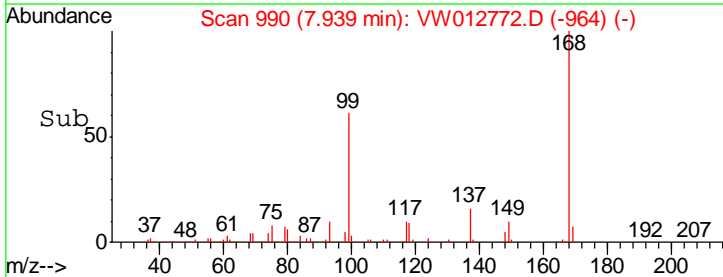
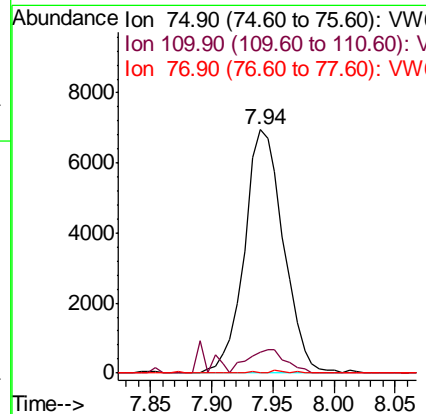
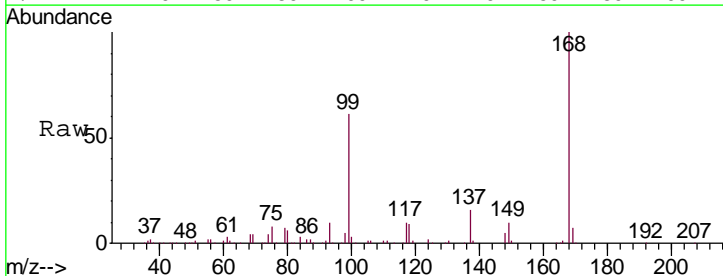
**Instrument :**  
 MSVOA\_W  
**ClientSampled :**  
 PAR-E3-(3.11)

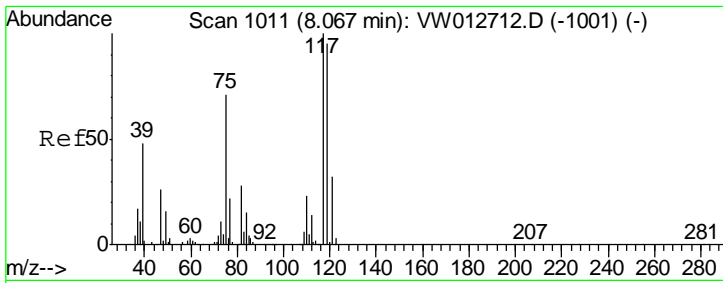
Tgt Ion	Resp	Lower	Upper
113	100		
111	102.4	80.2	120.4
192	21.8	17.3	25.9



#36  
 1,1-Dichloropropene  
 Concen: 5.843 ug/l  
 RT: 7.94 min Scan# 990  
 Delta R.T. -0.14 min  
 Lab File: VW012772.D  
 Acq: 08 Sep 2019 16:27

Tgt Ion	Resp	Lower	Upper
75	100		
110	9.7	15.9	47.7#
77	0.5	25.0	37.4#

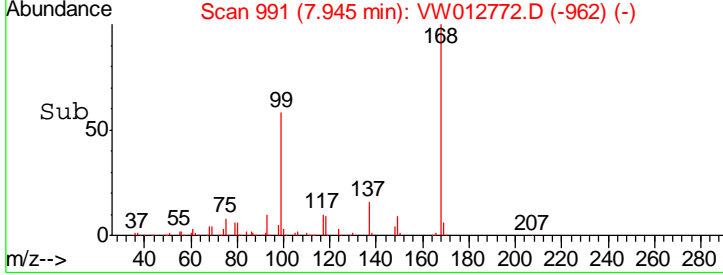
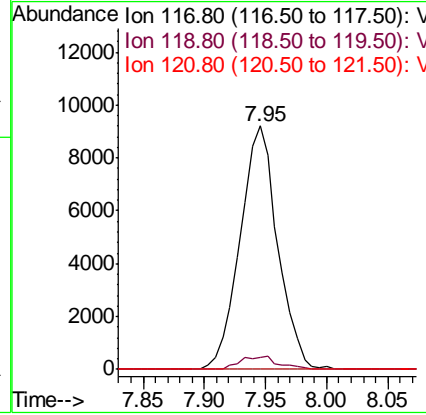
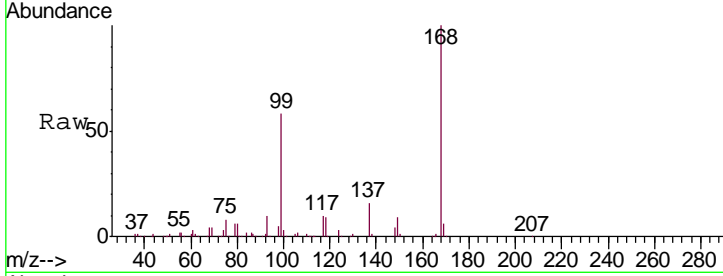




#38  
 Carbon Tetrachloride  
 Concen: 7.553 ug/l  
 RT: 7.95 min Scan# 991  
 Delta R.T. -0.12 min  
 Lab File: VW012772.D  
 Acq: 08 Sep 2019 16:27

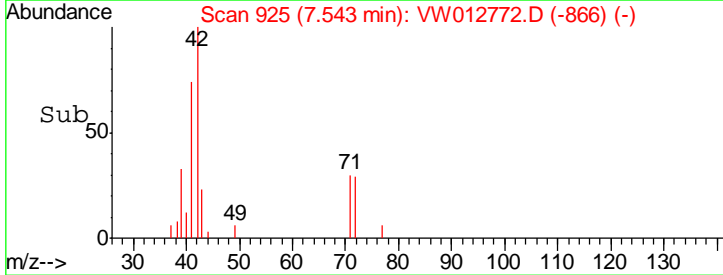
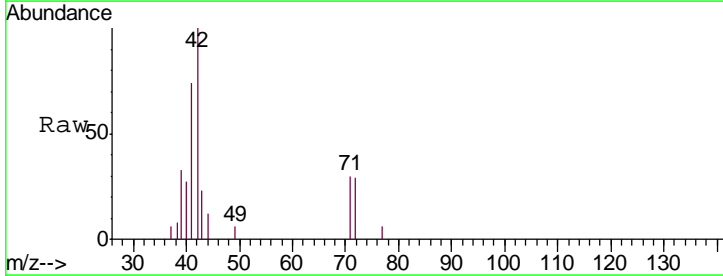
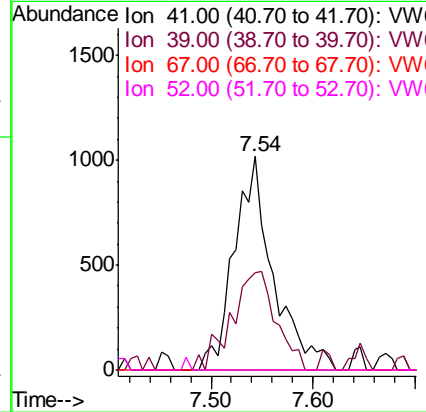
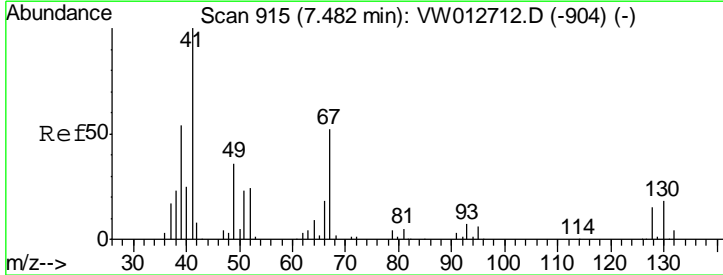
Instrument :  
 MSVOA\_W  
 ClientSampleId :  
 PAR-E3-(3.11)

Tgt Ion	Resp	Lower	Upper
117	19584		
119	4.8	76.2	114.2#
121	0.0	25.4	38.2#

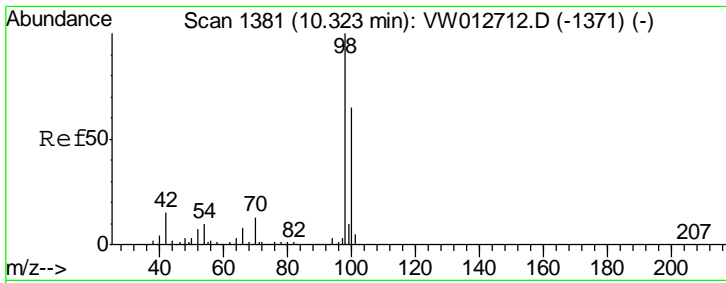


#41  
 Methacrylonitrile  
 Concen: 6.028 ug/l  
 RT: 7.54 min Scan# 925  
 Delta R.T. 0.06 min  
 Lab File: VW012772.D  
 Acq: 08 Sep 2019 16:27

Tgt Ion	Resp	Lower	Upper
41	2703		
39	52.6	47.5	71.3
67	0.0	45.1	67.7#
52	0.0	20.2	30.2#



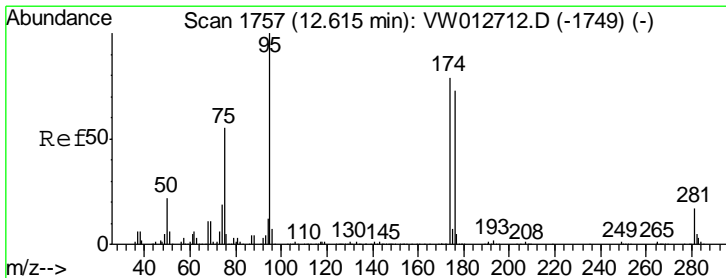
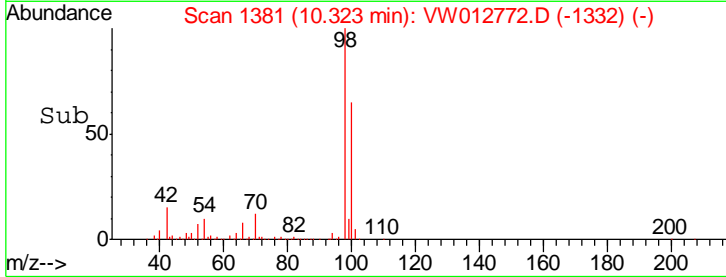
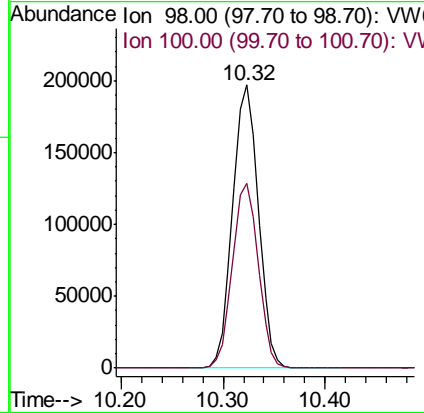
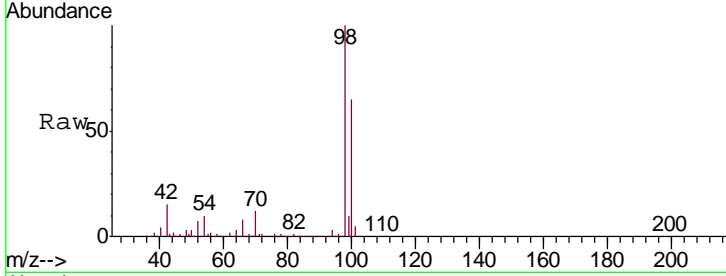




#50  
 Toluene-d8  
 Concen: 49.839 ug/l  
 RT: 10.32 min Scan# 1381  
 Delta R.T. 0.00 min  
 Lab File: VW012772.D  
 Acq: 08 Sep 2019 16:27

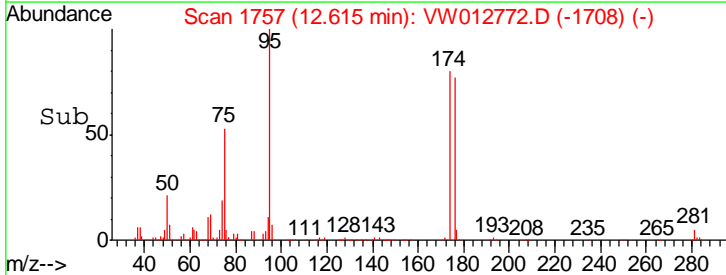
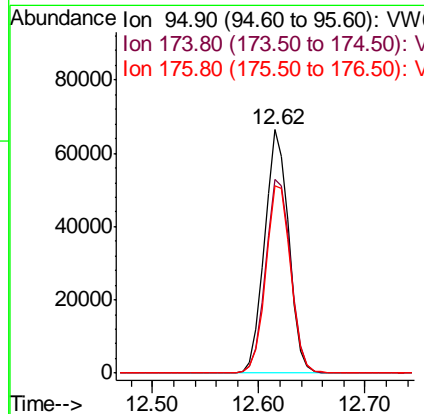
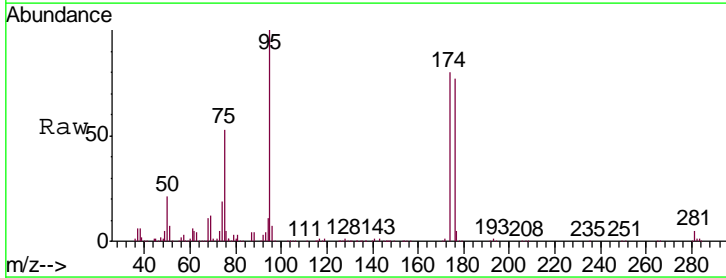
Instrument :  
 MSVOA\_W  
 ClientSampled :  
 PAR-E3-(3.11)

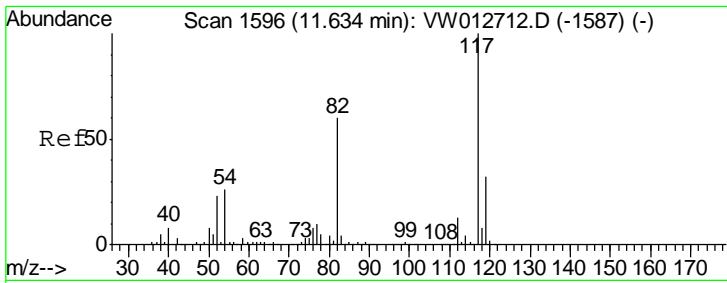
Tgt Ion: 98 Resp: 343651  
 Ion Ratio Lower Upper  
 98 100  
 100 65.7 52.2 78.4



#62  
 4-Bromofluorobenzene  
 Concen: 42.204 ug/l  
 RT: 12.62 min Scan# 1757  
 Delta R.T. 0.00 min  
 Lab File: VW012772.D  
 Acq: 08 Sep 2019 16:27

Tgt Ion: 95 Resp: 105644  
 Ion Ratio Lower Upper  
 95 100  
 174 83.0 0.0 161.0  
 176 79.6 0.0 156.4

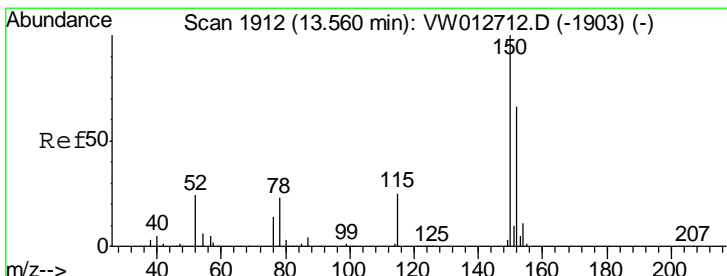
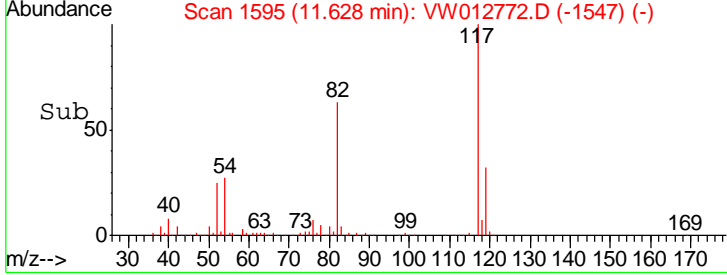
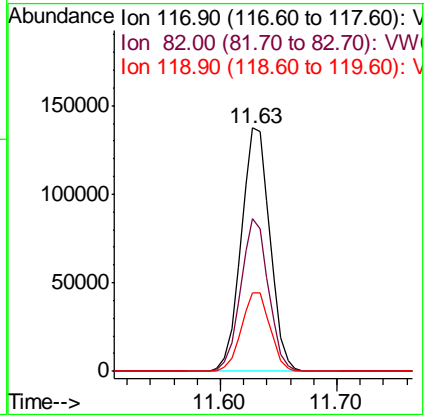
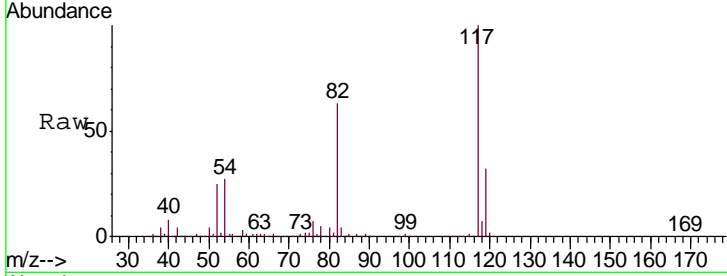




#63  
 Chlorobenzene-d5  
 Concen: 50.000 ug/l  
 RT: 11.63 min Scan# 1595  
 Delta R.T. -0.01 min  
 Lab File: VW012772.D  
 Acq: 08 Sep 2019 16:27

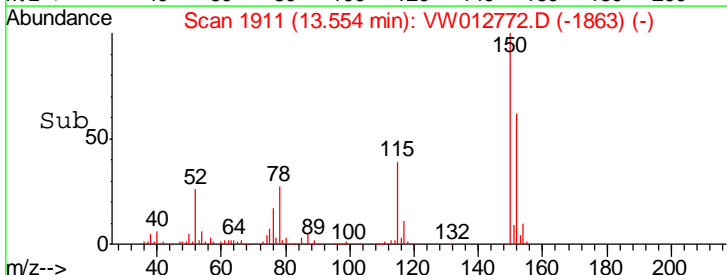
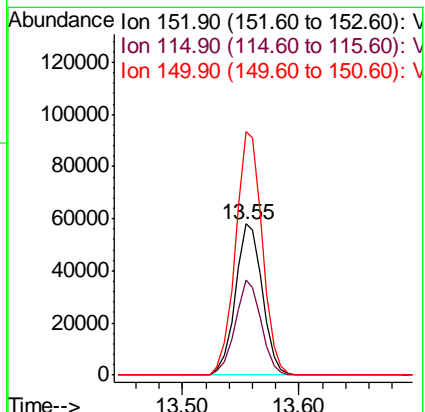
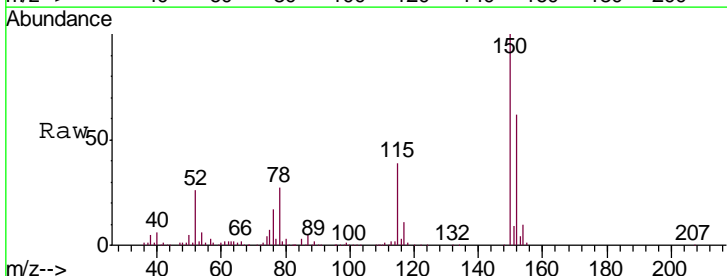
Instrument : MSVOA\_W  
 ClientSampled : PAR-E3-(3.11)

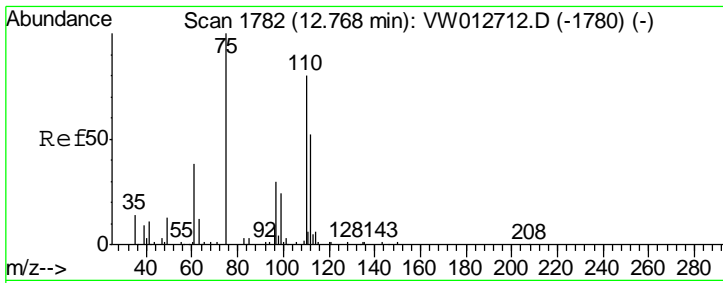
Tgt Ion	Resp	Lower	Upper
117	100		
82	62.7	48.2	72.4
119	32.2	25.8	38.6



#72  
 1,4-Dichlorobenzene-d4  
 Concen: 50.000 ug/l  
 RT: 13.55 min Scan# 1911  
 Delta R.T. -0.01 min  
 Lab File: VW012772.D  
 Acq: 08 Sep 2019 16:27

Tgt Ion	Resp	Lower	Upper
152	100		
115	60.5	30.0	90.1
150	159.5	0.0	349.0

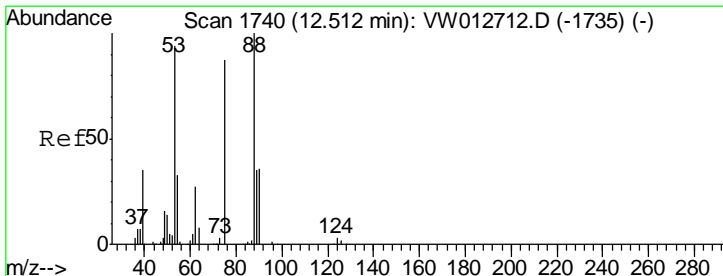
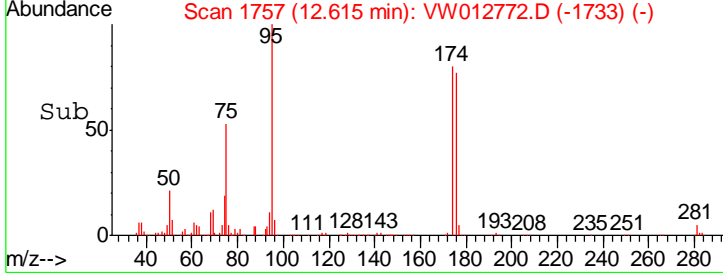
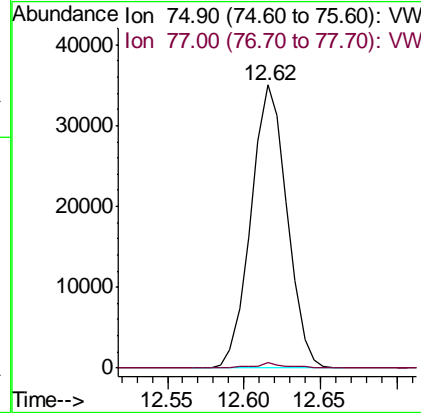
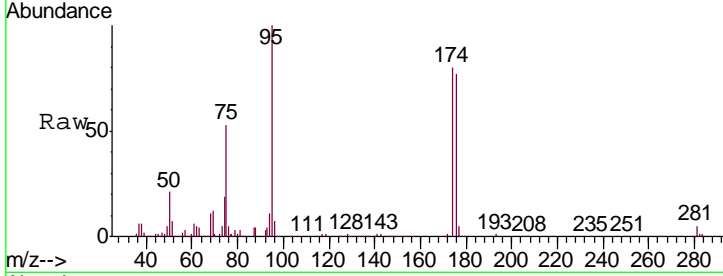




#76  
 1,2,3-Trichloropropane  
 Concen: 60.117 ug/l  
 RT: 12.62 min Scan# 1757  
 Delta R.T. -0.15 min  
 Lab File: VW012772.D  
 Acq: 08 Sep 2019 16:27

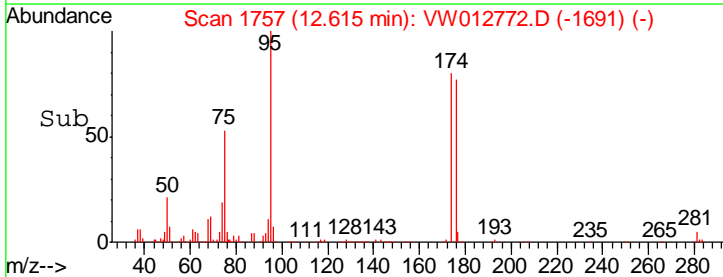
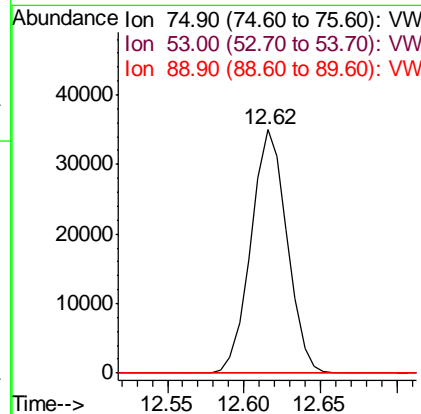
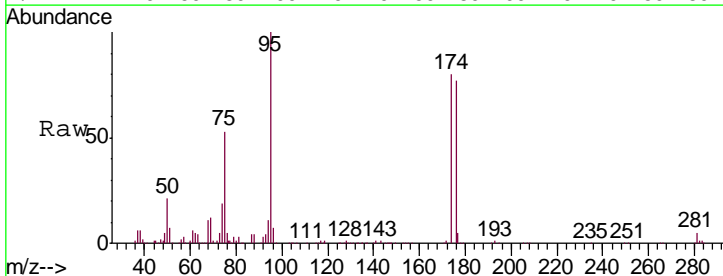
Instrument :  
 MSVOA\_W  
 ClientSampled :  
 PAR-E3-(3.11)

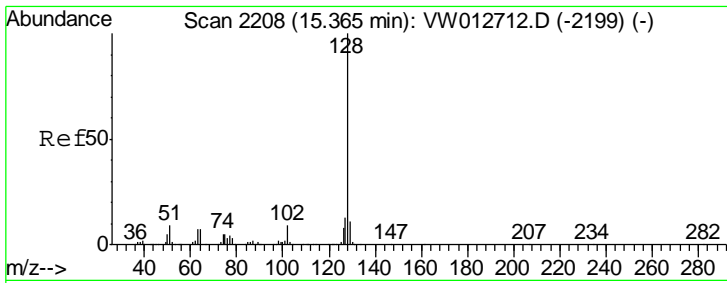
Tgt Ion	Resp	Lower	Upper
75	100		
77	1.6	0.0	0.0#



#81  
 trans-1,4-Dichloro-2-butene  
 Concen: 127.152 ug/l  
 RT: 12.62 min Scan# 1757  
 Delta R.T. 0.10 min  
 Lab File: VW012772.D  
 Acq: 08 Sep 2019 16:27

Tgt Ion	Resp	Lower	Upper
75	100		
53	0.0	87.6	131.4#
89	0.0	35.5	53.3#





#95  
 Naphthalene  
 Concen: 4.529 ug/l  
 RT: 15.37 min Scan# 2209  
 Delta R.T. 0.01 min  
 Lab File: VW012772.D  
 Acq: 08 Sep 2019 16:27

Instrument :  
 MSVOA\_W  
 ClientSampled :  
 PAR-E3-(3.11)

Tgt Ion	Resp	Ion Ratio	Lower	Upper
128	387	100		
127		0.0	10.7	16.1#
129		0.0	8.7	13.1#

