

Data File : VW012783.D  
 Acq On : 08 Sep 2019 21:11  
 Operator : SY/VA  
 Sample : K4603-15  
 Misc : 5.10G/5ML/MSVOA\_W/SOIL  
 ALS Vial : 24 Sample Multiplier: 1

Instrument :  
 MSVOA\_W  
 ClientSampleId :  
 SB-32-10.5-11.0

Quant Time: Sep 09 06:02:04 2019  
 Quant Method : Z:\VOASRV\HPCHEM1\MSVOA\_W\METHOD\82W090719S.M  
 Quant Title : SW846 8260  
 QLast Update : Sun Sep 08 05:04:40 2019  
 Response via : Initial Calibration

Internal Standards	R.T.	QIon	Response	Conc	Units	Dev(Min)
1) Pentafluorobenzene	7.95	168	193953	50.00	ug/l	0.00
34) 1,4-Difluorobenzene	8.84	114	297451	50.00	ug/l	0.00
63) Chlorobenzene-d5	11.63	117	246059	50.00	ug/l	0.00
72) 1,4-Dichlorobenzene-d4	13.56	152	105116	50.00	ug/l	0.00

System Monitoring Compounds

33) 1,2-Dichloroethane-d4	8.31	65	115269	53.19	ug/l	0.00
Spiked Amount	50.000		Recovery	=	106.38%	
35) Dibromofluoromethane	7.88	113	89556	50.64	ug/l	0.00
Spiked Amount	50.000		Recovery	=	101.28%	
50) Toluene-d8	10.32	98	349102	50.39	ug/l	0.00
Spiked Amount	50.000		Recovery	=	100.78%	
62) 4-Bromofluorobenzene	12.62	95	109761	43.64	ug/l	0.00
Spiked Amount	50.000		Recovery	=	87.28%	

Target Compounds

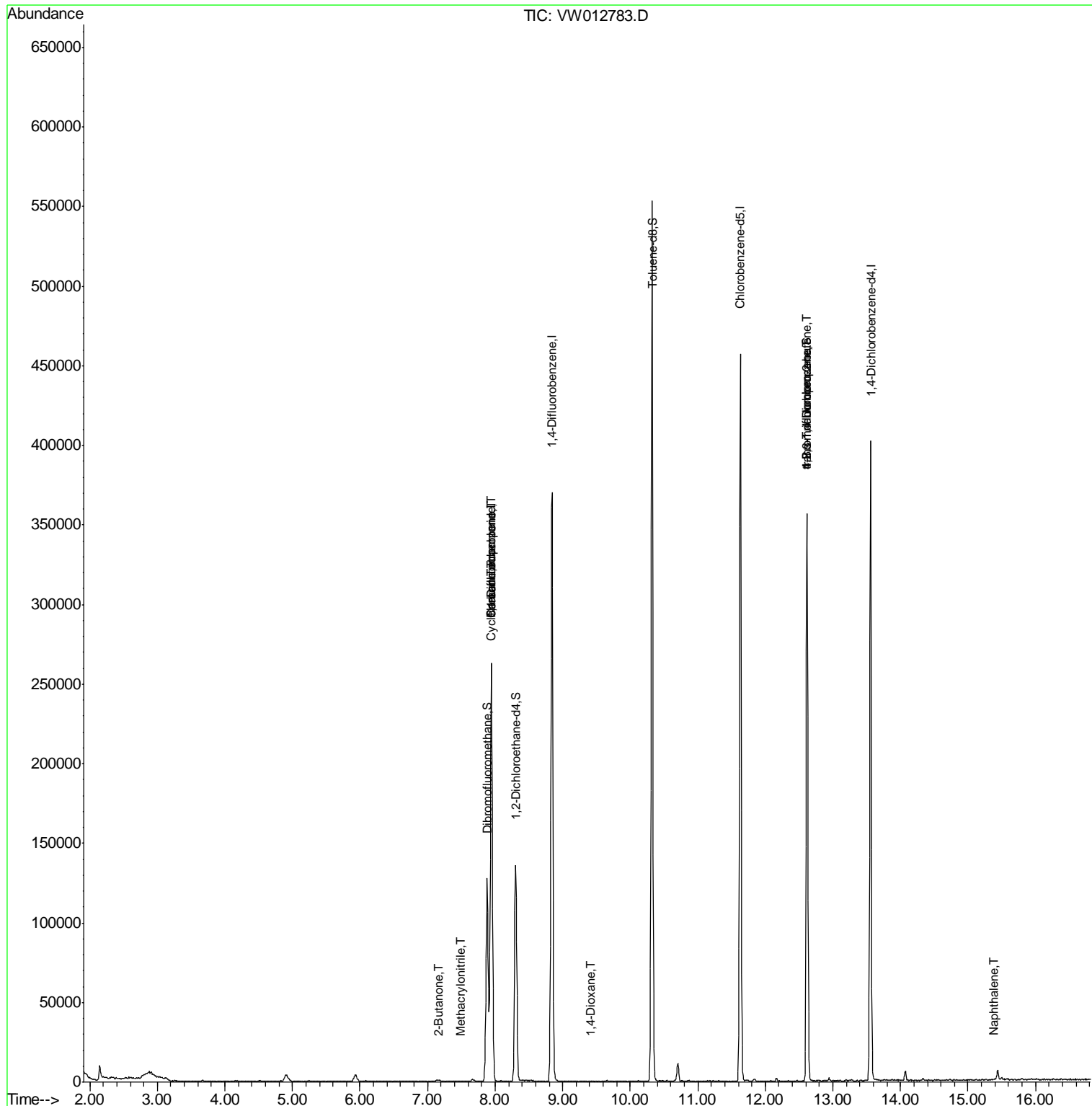
						Qvalue
25) 2-Butanone	7.17	43	40	19.723	ug/l #	53
31) Cyclohexane	7.93	56	4495	1.411	ug/l #	26
36) 1,1-Dichloropropene	7.95	75	15490	5.861	ug/l #	51
38) Carbon Tetrachloride	7.95	117	19403	7.448	ug/l #	15
41) Methacrylonitrile	7.49	41	19	3.854	ug/l #	1
49) 1,4-Dioxane	9.41	88	32	1.682	ug/l #	17
76) 1,2,3-Trichloropropane	12.62	75	59938	55.764	ug/l #	100
81) trans-1,4-Dichloro-2-buten	12.62	75	59938	117.944	ug/l #	6
95) Naphthalene	15.38	128	213	4.483	ug/l #	85

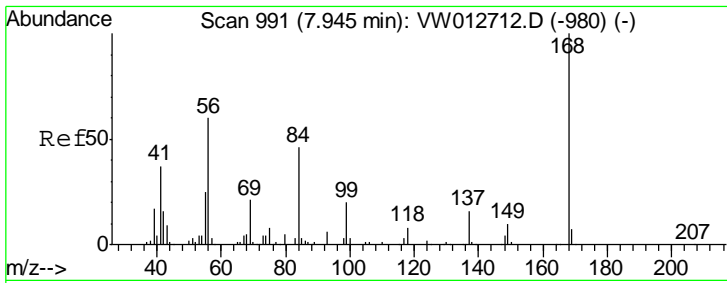
(#) = qualifier out of range (m) = manual integration (+) = signals summed

Data File : VW012783.D  
Acq On : 08 Sep 2019 21:11  
Operator : SY/VA  
Sample : K4603-15  
Misc : 5.10G/5ML/MSVOA\_W/SOIL  
ALS Vial : 24 Sample Multiplier: 1

Instrument :  
MSVOA\_W  
ClientSampleId :  
SB-32-10.5-11.0

Quant Time: Sep 09 06:02:04 2019  
Quant Method : Z:\VOASRV\HPCHEM1\MSVOA\_W\METHOD\82W090719S.M  
Quant Title : SW846 8260  
QLast Update : Sun Sep 08 05:04:40 2019  
Response via : Initial Calibration

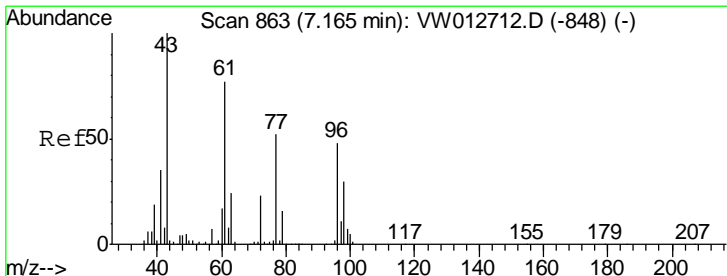
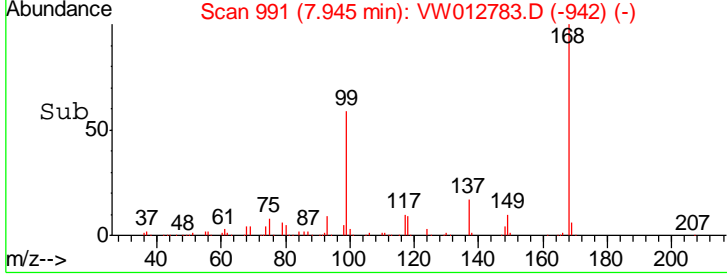
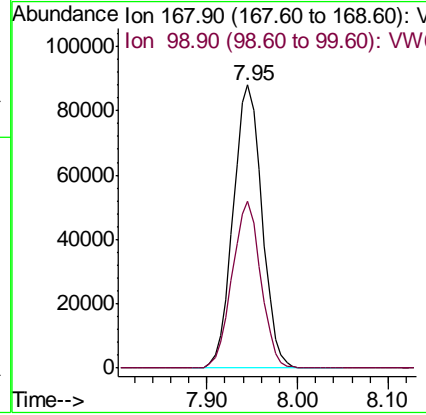
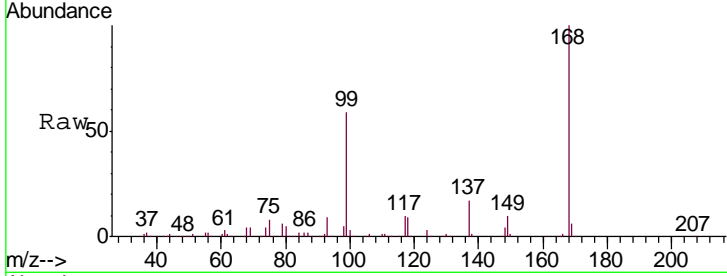




#1  
 Pentafluorobenzene  
 Concen: 50.000 ug/l  
 RT: 7.95 min Scan# 991  
 Delta R.T. 0.00 min  
 Lab File: VW012783.D  
 Acq: 08 Sep 2019 21:11

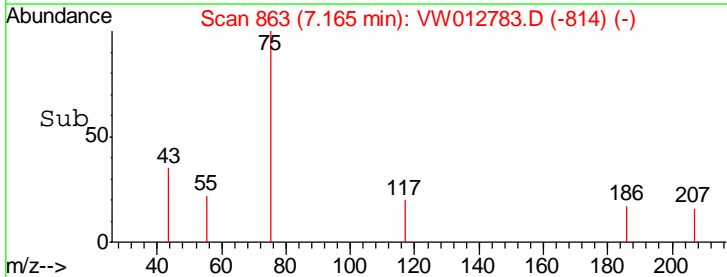
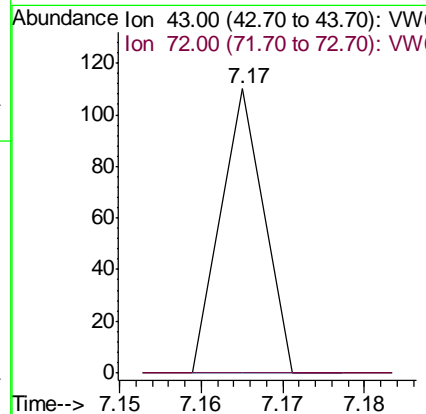
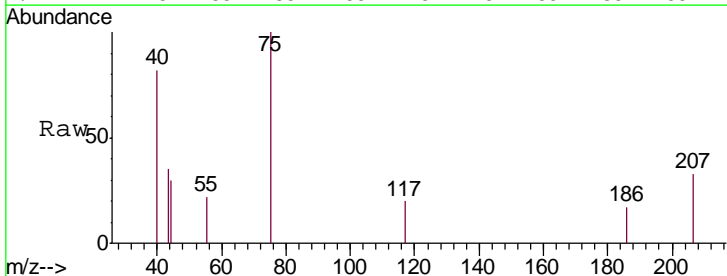
Instrument :  
 MSVOA\_W  
 ClientSampled :  
 SB-32-10.5-11.0

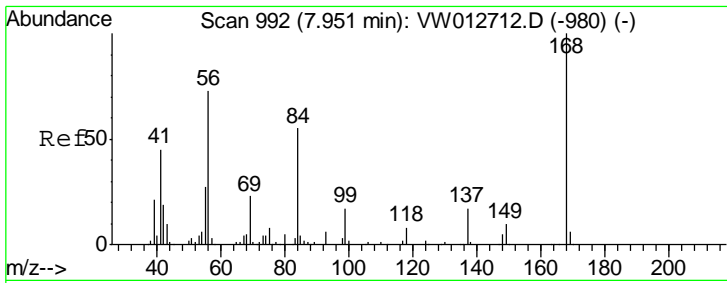
Tgt Ion: 168 Resp: 193953  
 Ion Ratio Lower Upper  
 168 100  
 99 59.2 47.8 71.6



#25  
 2-Butanone  
 Concen: 19.723 ug/l  
 RT: 7.17 min Scan# 863  
 Delta R.T. 0.00 min  
 Lab File: VW012783.D  
 Acq: 08 Sep 2019 21:11

Tgt Ion: 43 Resp: 40  
 Ion Ratio Lower Upper  
 43 100  
 72 0.0 18.0 27.0#

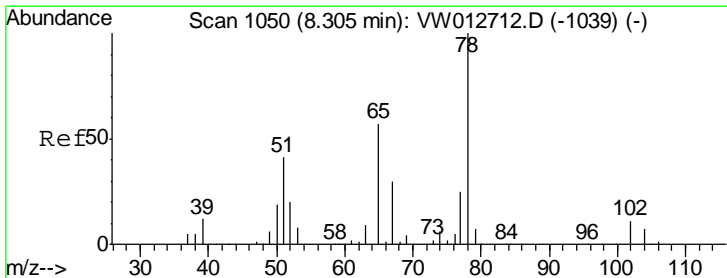
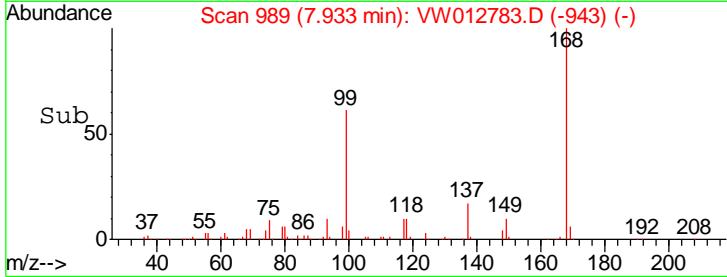
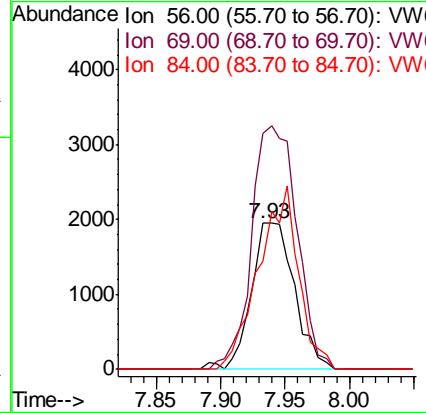
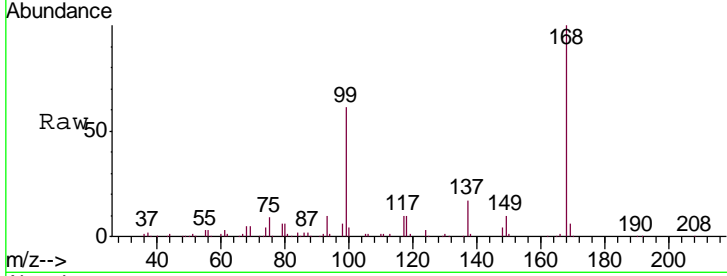




#31  
 Cyclohexane  
 Concen: 1.411 ug/l  
 RT: 7.93 min Scan# 989  
 Delta R.T. -0.02 min  
 Lab File: VW012783.D  
 Acq: 08 Sep 2019 21:11

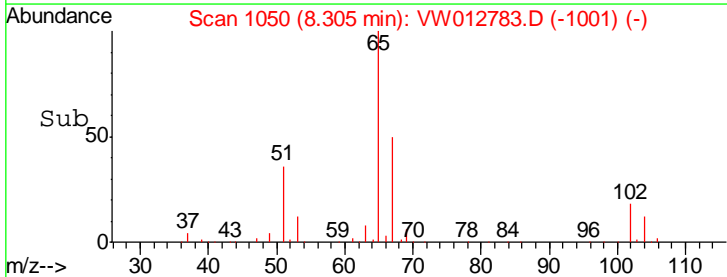
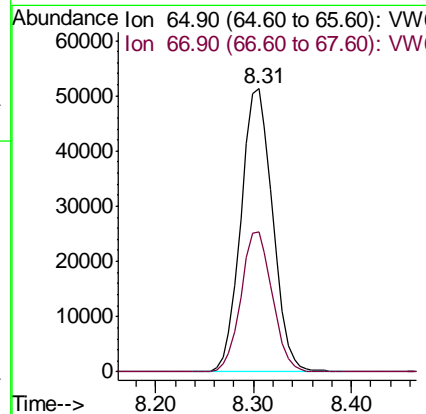
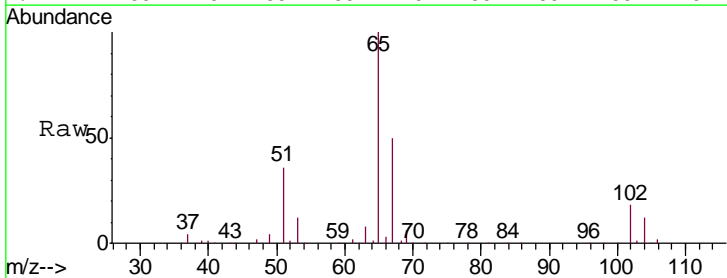
Instrument :  
 MSVOA\_W  
 ClientSampled :  
 SB-32-10.5-11.0

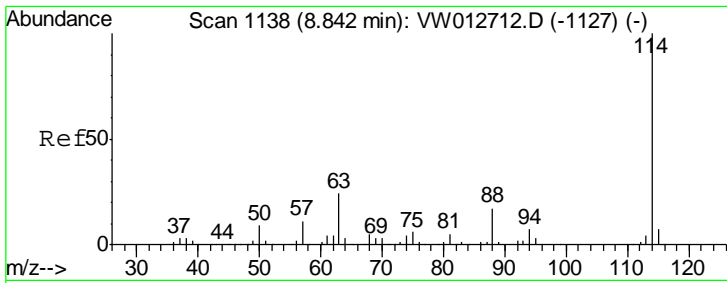
Tgt Ion	Resp	Lower	Upper
56	4495		
69	161.2	25.7	38.5#
84	81.0	60.4	90.6



#33  
 1,2-Dichloroethane-d4  
 Concen: 53.191 ug/l  
 RT: 8.31 min Scan# 1050  
 Delta R.T. 0.00 min  
 Lab File: VW012783.D  
 Acq: 08 Sep 2019 21:11

Tgt Ion	Resp	Lower	Upper
65	115269		
67	49.1	0.0	101.8

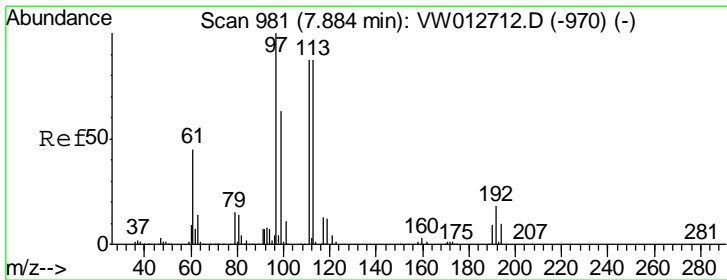
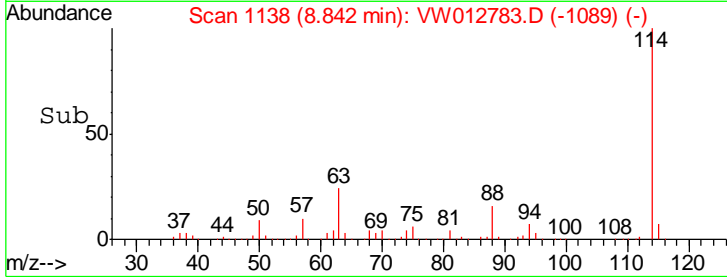
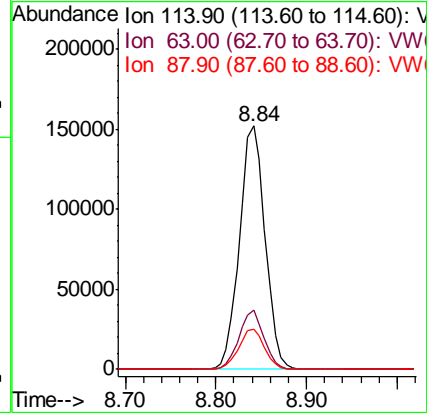
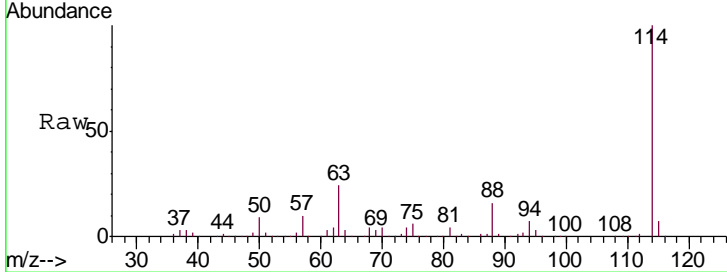




#34  
 1,4-Difluorobenzene  
 Concen: 50.000 ug/l  
 RT: 8.84 min Scan# 1138  
 Delta R.T. 0.00 min  
 Lab File: VW012783.D  
 Acq: 08 Sep 2019 21:11

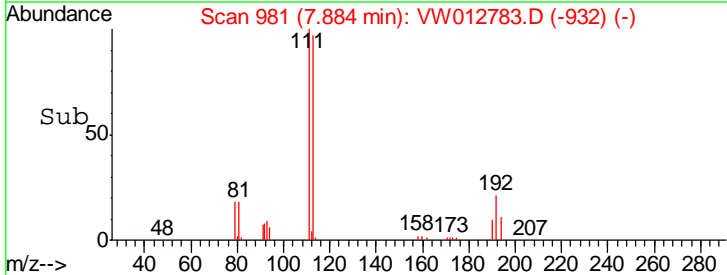
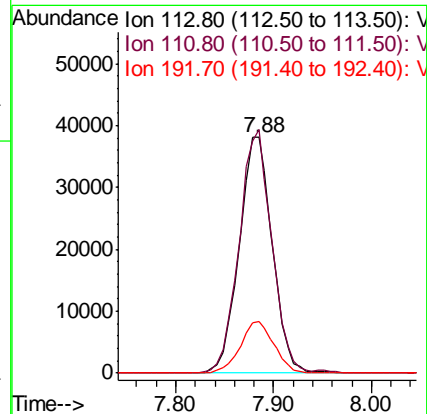
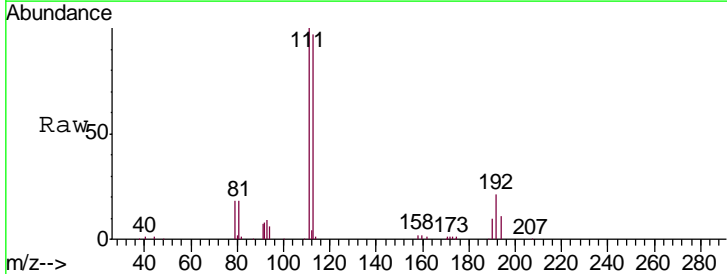
Instrument :  
 MSVOA\_W  
 ClientSampleId :  
 SB-32-10.5-11.0

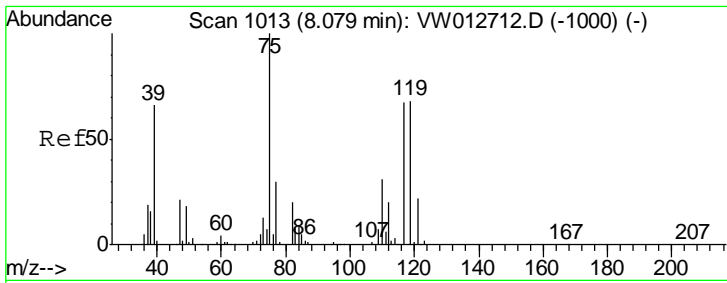
Tgt Ion	Resp	Lower	Upper
114	297451		
63	24.3	0.0	47.2
88	16.3	0.0	34.0



#35  
 Dibromofluoromethane  
 Concen: 50.642 ug/l  
 RT: 7.88 min Scan# 981  
 Delta R.T. 0.00 min  
 Lab File: VW012783.D  
 Acq: 08 Sep 2019 21:11

Tgt Ion	Resp	Lower	Upper
113	89556		
111	102.2	80.2	120.4
192	22.3	17.3	25.9

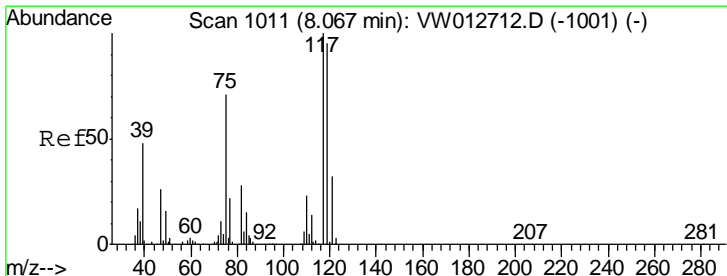
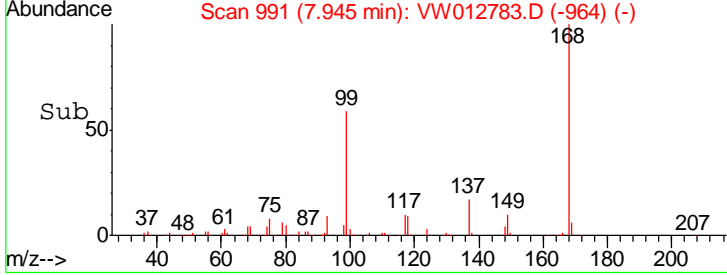
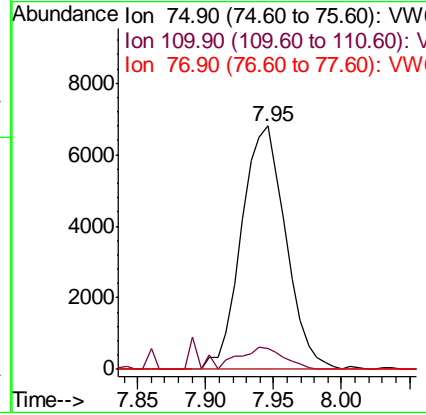
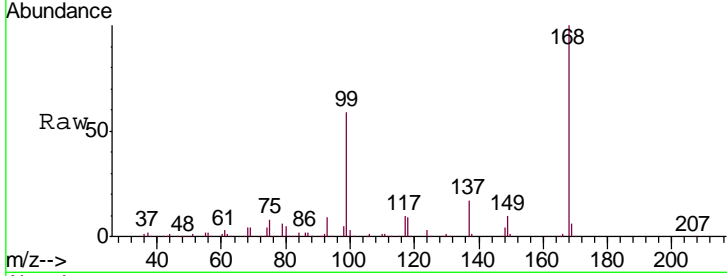




#36  
 1,1-Dichloropropene  
 Concen: 5.861 ug/l  
 RT: 7.95 min Scan# 991  
 Delta R.T. -0.13 min  
 Lab File: VW012783.D  
 Acq: 08 Sep 2019 21:11

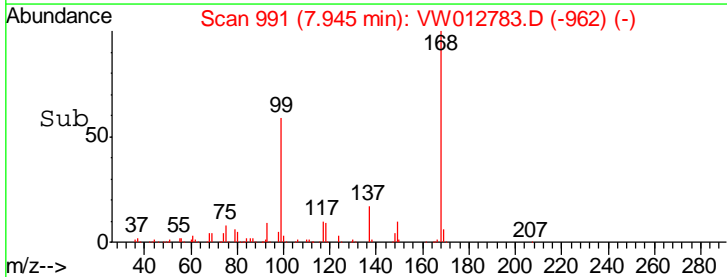
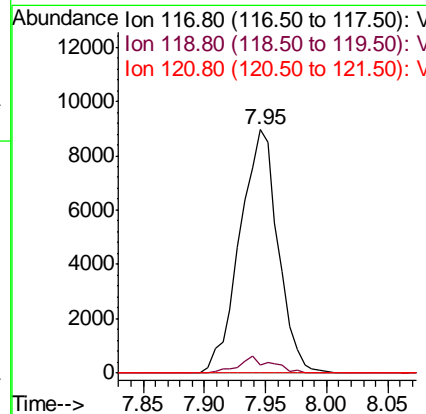
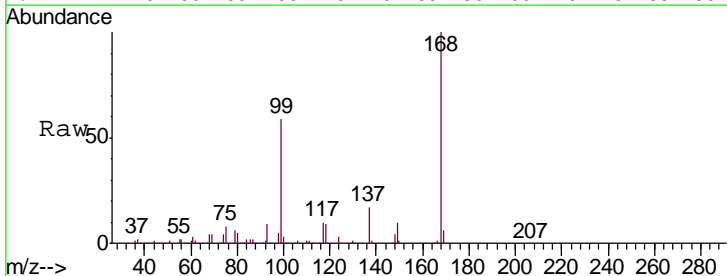
Instrument :  
 MSVOA\_W  
 ClientSampled :  
 SB-32-10.5-11.0

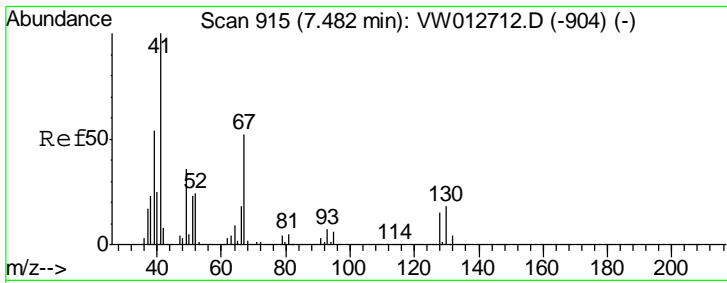
Tgt Ion	Resp	Lower	Upper
75	15490		
110	9.2	15.9	47.7#
77	0.0	25.0	37.4#



#38  
 Carbon Tetrachloride  
 Concen: 7.448 ug/l  
 RT: 7.95 min Scan# 991  
 Delta R.T. -0.12 min  
 Lab File: VW012783.D  
 Acq: 08 Sep 2019 21:11

Tgt Ion	Resp	Lower	Upper
117	19403		
119	3.5	76.2	114.2#
121	0.0	25.4	38.2#

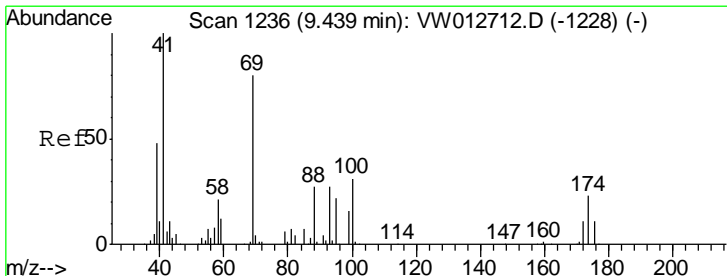
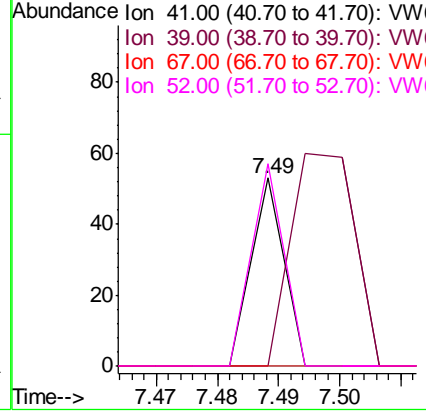
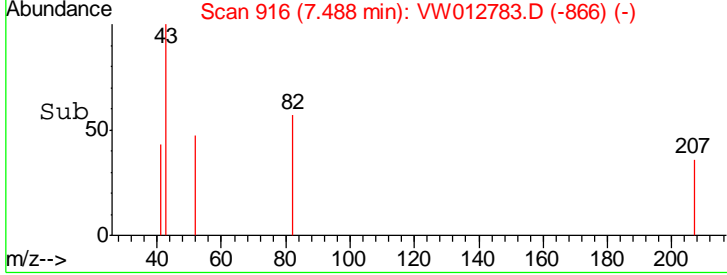
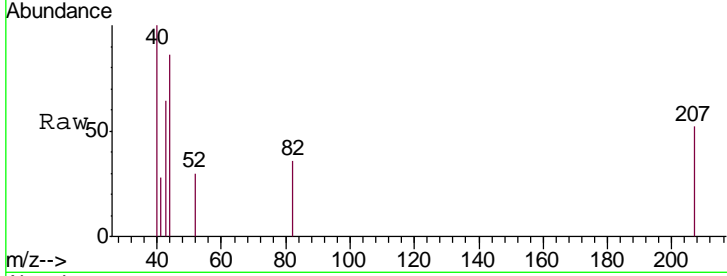




#41  
 Methacrylonitrile  
 Concen: 3.854 ug/l  
 RT: 7.49 min Scan# 916  
 Delta R.T. 0.01 min  
 Lab File: VW012783.D  
 Acq: 08 Sep 2019 21:11

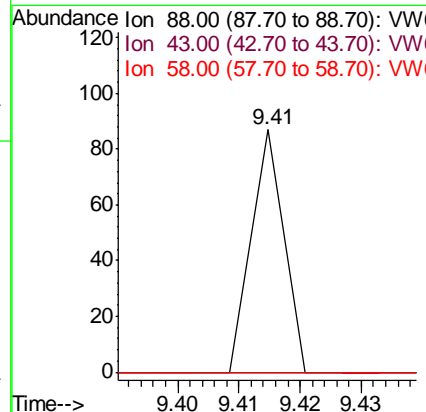
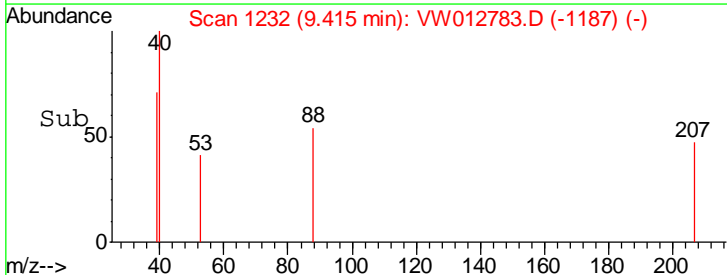
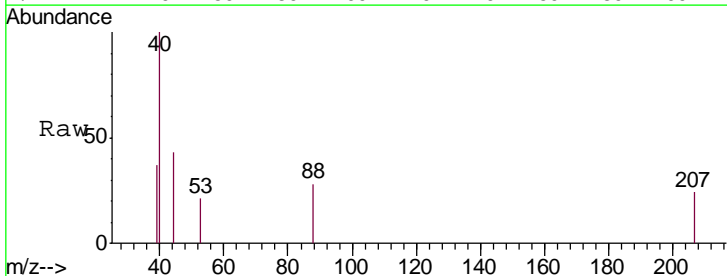
Instrument :  
 MSVOA\_W  
 ClientSampleId :  
 SB-32-10.5-11.0

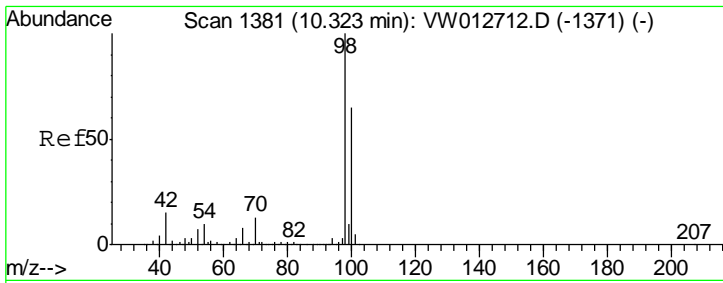
Tgt Ion	Resp	Lower	Upper
41	100		
39	231.6	47.5	71.3#
67	0.0	45.1	67.7#
52	110.5	20.2	30.2#



#49  
 1,4-Dioxane  
 Concen: 1.682 ug/l  
 RT: 9.41 min Scan# 1232  
 Delta R.T. -0.02 min  
 Lab File: VW012783.D  
 Acq: 08 Sep 2019 21:11

Tgt Ion	Resp	Lower	Upper
88	100		
43	0.0	34.8	52.2#
58	0.0	64.1	96.1#

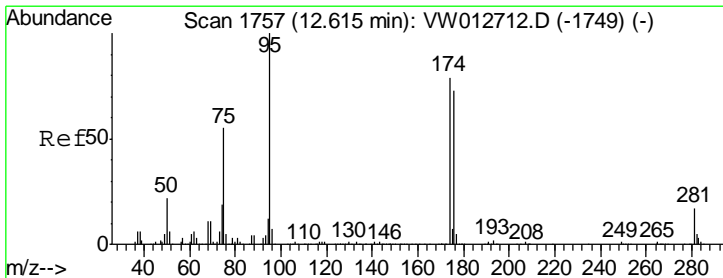
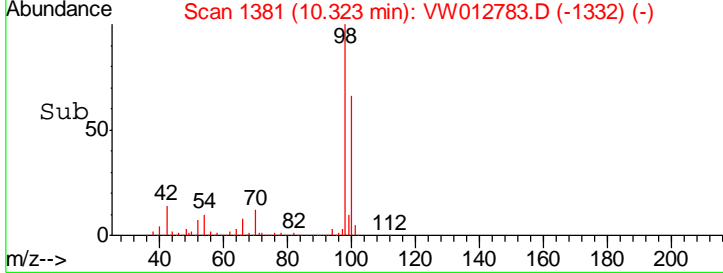
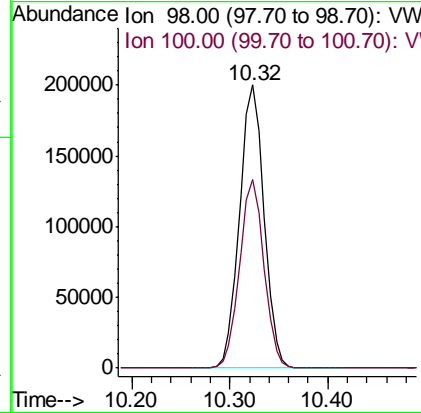
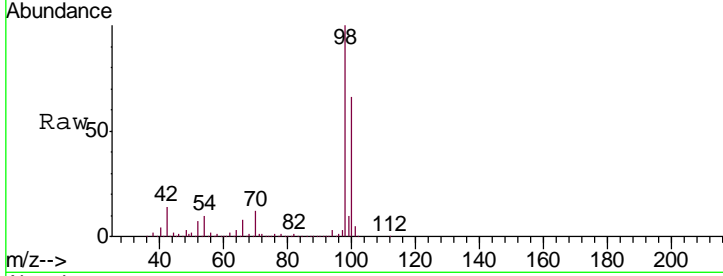




#50  
 Toluene-d8  
 Concen: 50.388 ug/l  
 RT: 10.32 min Scan# 1381  
 Delta R.T. 0.00 min  
 Lab File: VW012783.D  
 Acq: 08 Sep 2019 21:11

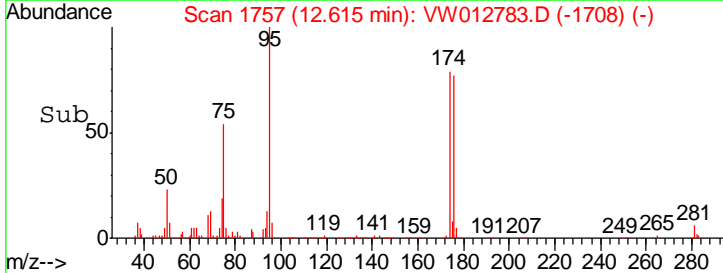
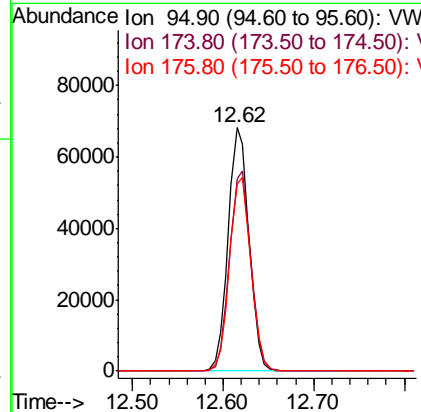
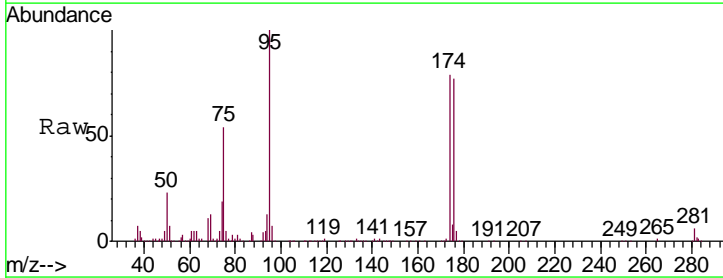
Instrument : MSVOA\_W  
 ClientSampled : SB-32-10.5-11.0

Tgt Ion: 98 Resp: 349102  
 Ion Ratio Lower Upper  
 98 100  
 100 66.0 52.2 78.4

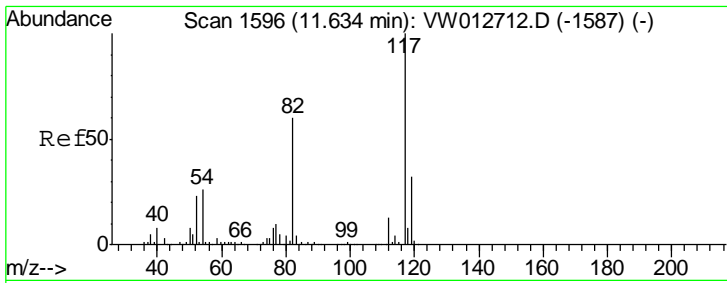


#62  
 4-Bromofluorobenzene  
 Concen: 43.639 ug/l  
 RT: 12.62 min Scan# 1757  
 Delta R.T. 0.00 min  
 Lab File: VW012783.D  
 Acq: 08 Sep 2019 21:11

Tgt Ion: 95 Resp: 109761  
 Ion Ratio Lower Upper  
 95 100  
 174 83.5 0.0 161.0  
 176 80.8 0.0 156.4



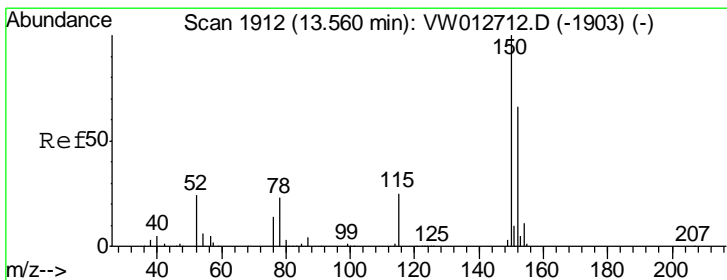
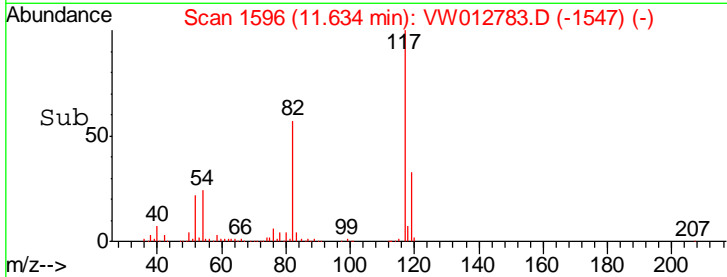
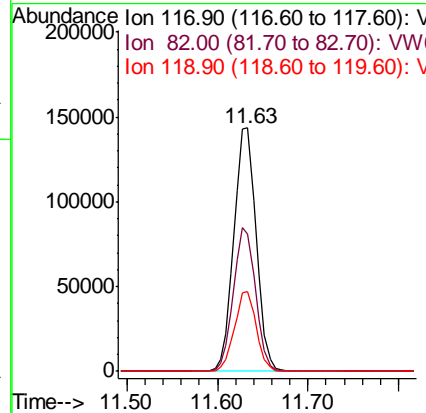
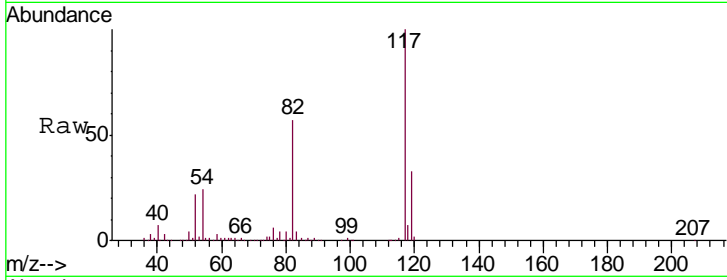




#63  
 Chlorobenzene-d5  
 Concen: 50.000 ug/l  
 RT: 11.63 min Scan# 1596  
 Delta R.T. 0.00 min  
 Lab File: VW012783.D  
 Acq: 08 Sep 2019 21:11

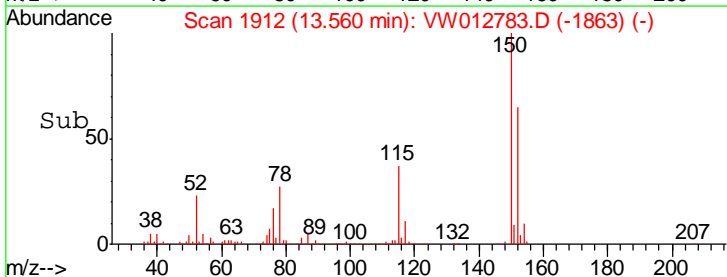
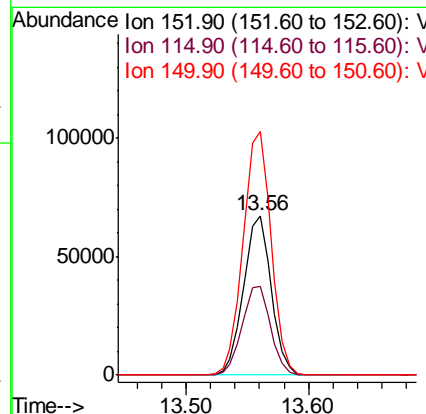
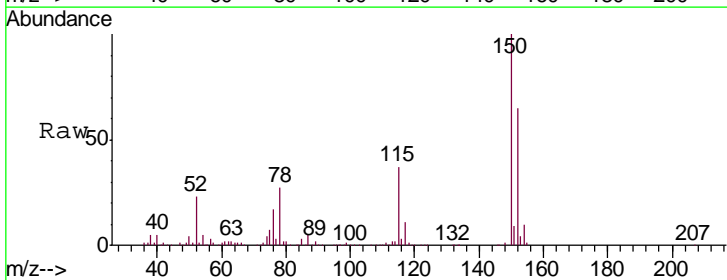
Instrument :  
 MSVOA\_W  
 ClientSampled :  
 SB-32-10.5-11.0

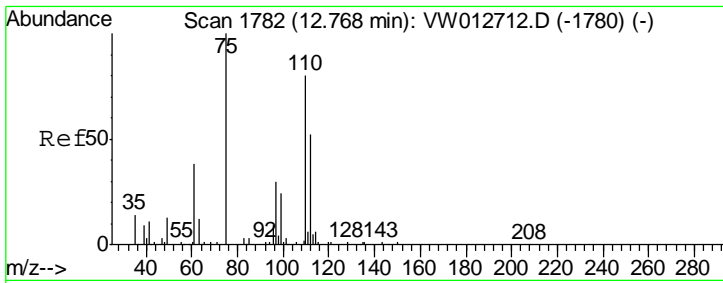
Tgt Ion	Resp	Lower	Upper
117	246059		
82	56.6	48.2	72.4
119	32.6	25.8	38.6



#72  
 1,4-Dichlorobenzene-d4  
 Concen: 50.000 ug/l  
 RT: 13.56 min Scan# 1912  
 Delta R.T. 0.00 min  
 Lab File: VW012783.D  
 Acq: 08 Sep 2019 21:11

Tgt Ion	Resp	Lower	Upper
152	105116		
115	57.4	30.0	90.1
150	155.1	0.0	349.0

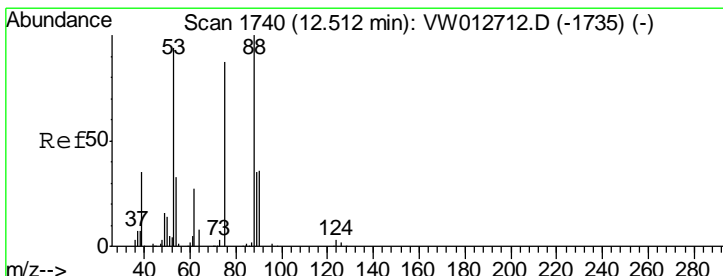
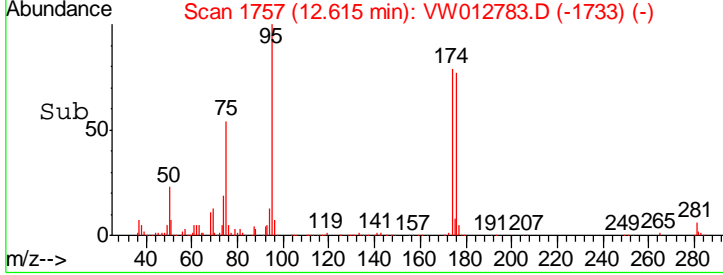
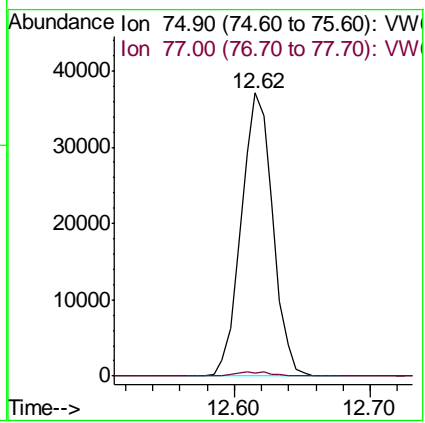
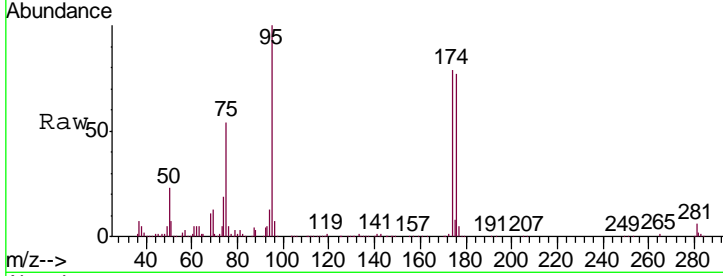




#76  
 1,2,3-Trichloropropane  
 Concen: 55.764 ug/l  
 RT: 12.62 min Scan# 1757  
 Delta R.T. -0.15 min  
 Lab File: VW012783.D  
 Acq: 08 Sep 2019 21:11

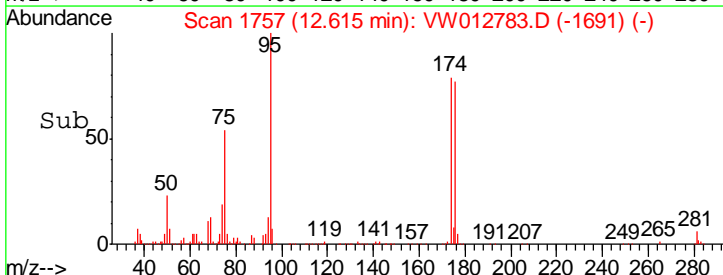
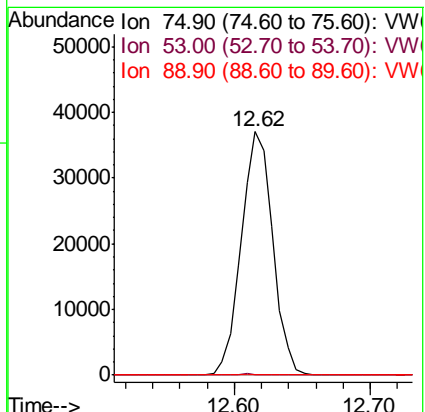
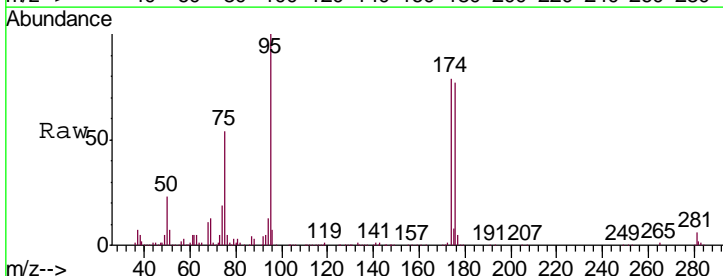
Instrument :  
 MSVOA\_W  
 ClientSampled :  
 SB-32-10.5-11.0

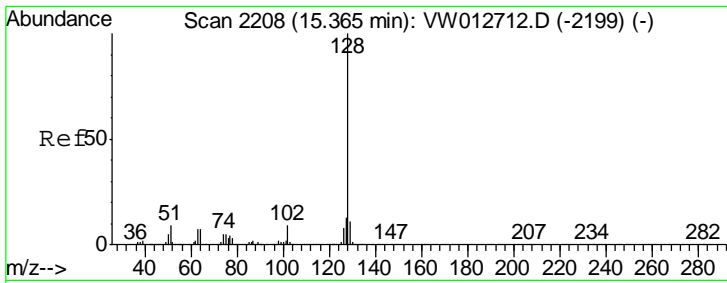
Tgt Ion	Resp	Lower	Upper
75	100		
77	1.7	0.0	0.0#



#81  
 trans-1,4-Dichloro-2-butene  
 Concen: 117.944 ug/l  
 RT: 12.62 min Scan# 1757  
 Delta R.T. 0.10 min  
 Lab File: VW012783.D  
 Acq: 08 Sep 2019 21:11

Tgt Ion	Resp	Lower	Upper
75	100		
53	0.2	87.6	131.4#
89	0.0	35.5	53.3#





#95  
 Naphthalene  
 Concen: 4.483 ug/l  
 RT: 15.38 min Scan# 2210  
 Delta R.T. 0.01 min  
 Lab File: VW012783.D  
 Acq: 08 Sep 2019 21:11

Instrument :  
 MSVOA\_W  
 ClientSampleId :  
 SB-32-10.5-11.0

Tgt Ion: 128 Resp: 213

Ion	Ratio	Lower	Upper
128	100		
127	12.2	10.7	16.1
129	0.0	8.7	13.1#

