

Data File : VW012798.D  
 Acq On : 09 Sep 2019 04:16  
 Operator : SY/VA  
 Sample : K4623-10  
 Misc : 4.76G/5ML/MSVOA\_W/SOIL  
 ALS Vial : 39 Sample Multiplier: 1

Instrument :  
 MSVOA\_W  
 ClientSampleId :  
 PAR-11-D2-(0)

Quant Time: Sep 09 06:08:22 2019  
 Quant Method : Z:\VOASRV\HPCHEM1\MSVOA\_W\METHOD\82W090719S.M  
 Quant Title : SW846 8260  
 QLast Update : Sun Sep 08 05:04:40 2019  
 Response via : Initial Calibration

Internal Standards	R.T.	QIon	Response	Conc	Units	Dev(Min)
1) Pentafluorobenzene	7.95	168	256099	50.00	ug/l	0.00
34) 1,4-Difluorobenzene	8.84	114	387375	50.00	ug/l	0.00
63) Chlorobenzene-d5	11.63	117	327697	50.00	ug/l	0.00
72) 1,4-Dichlorobenzene-d4	13.56	152	122117	50.00	ug/l	0.00

System Monitoring Compounds

33) 1,2-Dichloroethane-d4	8.30	65	144929	50.65	ug/l	0.00
Spiked Amount	50.000		Recovery	=	101.30%	
35) Dibromofluoromethane	7.88	113	114186	49.58	ug/l	0.00
Spiked Amount	50.000		Recovery	=	99.16%	
50) Toluene-d8	10.32	98	466587	51.71	ug/l	0.00
Spiked Amount	50.000		Recovery	=	103.42%	
62) 4-Bromofluorobenzene	12.62	95	142197	43.41	ug/l	0.00
Spiked Amount	50.000		Recovery	=	86.82%	

Target Compounds

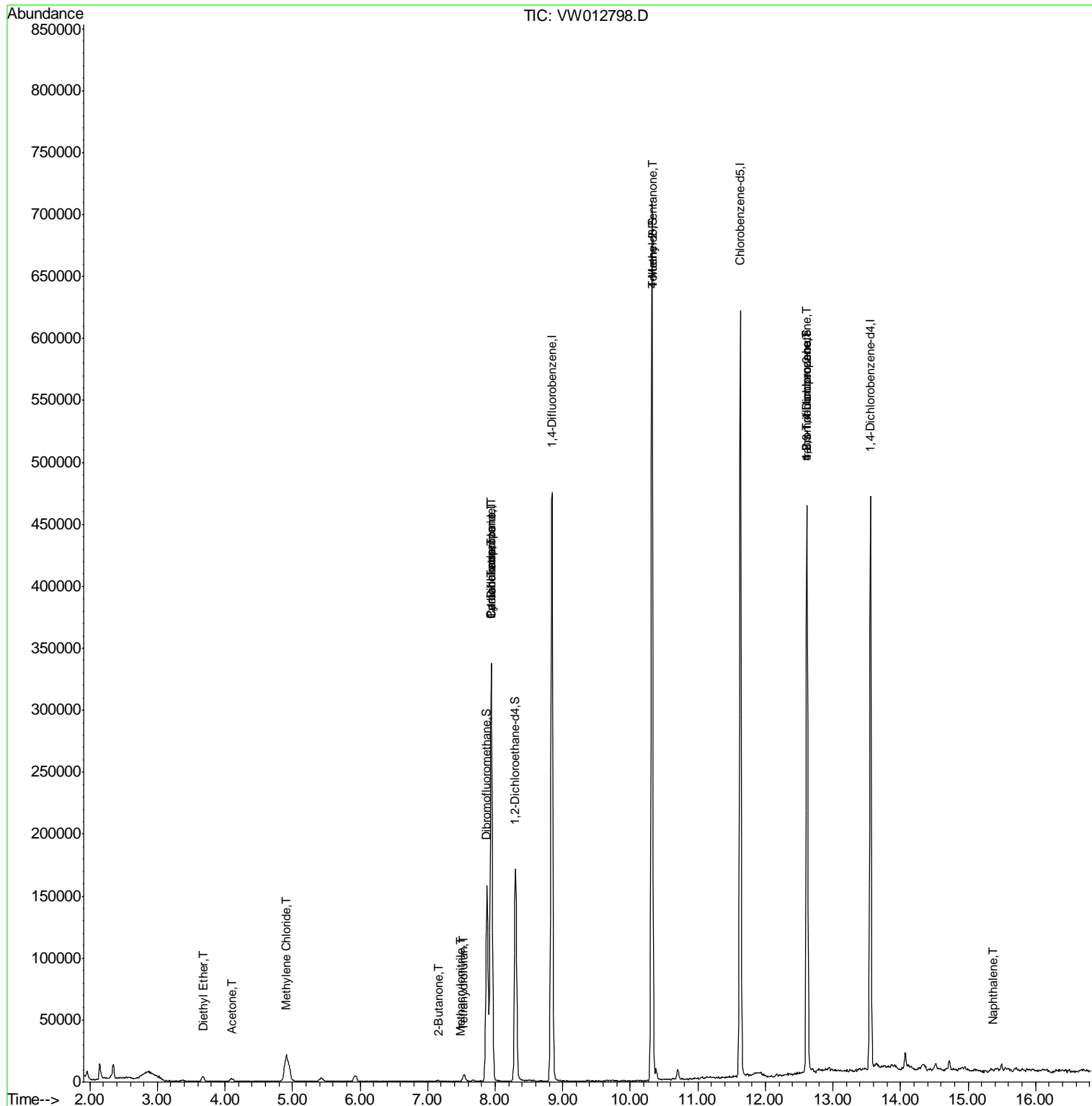
						Qvalue
8) Diethyl Ether	3.67	74	1963	1.636	ug/l	85
16) Acetone	4.10	43	1538	1.972	ug/l #	47
20) Methylene Chloride	4.91	84	12589	5.158	ug/l	94
25) 2-Butanone	7.16	43	27	19.702	ug/l #	53
29) Tetrahydrofuran	7.53	42	4603	7.307	ug/l	93
31) Cyclohexane	7.95	56	6506	1.547	ug/l #	23
36) 1,1-Dichloropropene	7.94	75	19694	5.722	ug/l #	51
38) Carbon Tetrachloride	7.95	117	24914	7.343	ug/l #	17
41) Methacrylonitrile	7.48	41	154	3.934	ug/l #	27
51) 4-Methyl-2-Pentanone	10.32	43	2702	1.239	ug/l #	1
76) 1,2,3-Trichloropropane	12.62	75	77719	62.240	ug/l #	100
81) trans-1,4-Dichloro-2-buten	12.62	75	77719	131.642	ug/l #	7
95) Naphthalene	15.36	128	293	4.491	ug/l #	76

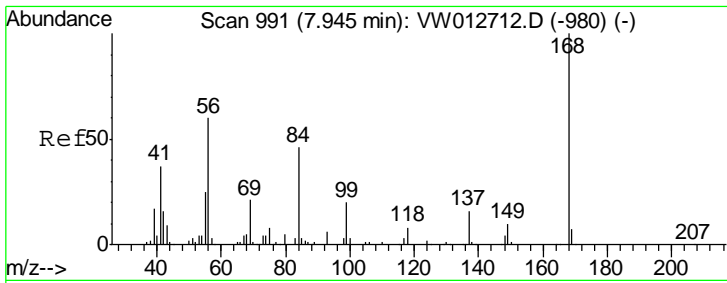
(#) = qualifier out of range (m) = manual integration (+) = signals summed

Data File : VW012798.D  
Acq On : 09 Sep 2019 04:16  
Operator : SY/VA  
Sample : K4623-10  
Misc : 4.76G/5ML/MSVOA\_W/SOIL  
ALS Vial : 39 Sample Multiplier: 1

Instrument :  
MSVOA\_W  
Client Sampled :  
PAR-11-D2-(0)

Quant Time: Sep 09 06:08:22 2019  
Quant Method : Z:\VOASRV\HPCHEM1\MSVOA\_W\METHOD\82W090719S.M  
Quant Title : SW846 8260  
QLast Update : Sun Sep 08 05:04:40 2019  
Response via : Initial Calibration

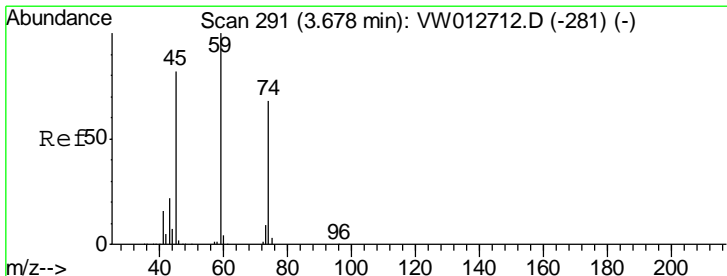
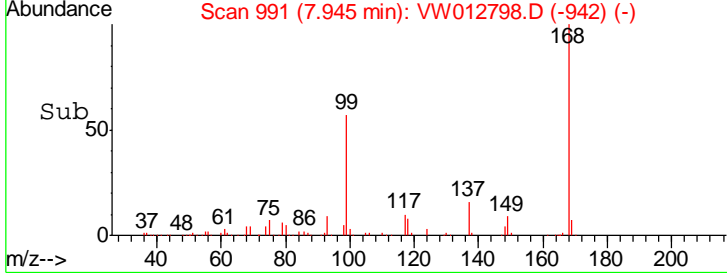
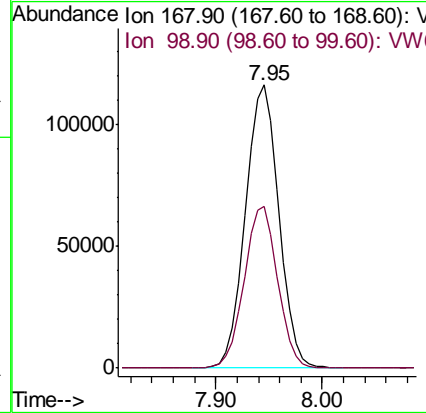
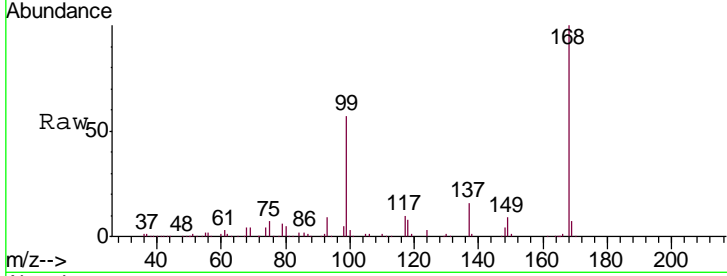




#1  
 Pentafluorobenzene  
 Concen: 50.000 ug/l  
 RT: 7.95 min Scan# 991  
 Delta R.T. 0.00 min  
 Lab File: VW012798.D  
 Acq: 09 Sep 2019 04:16

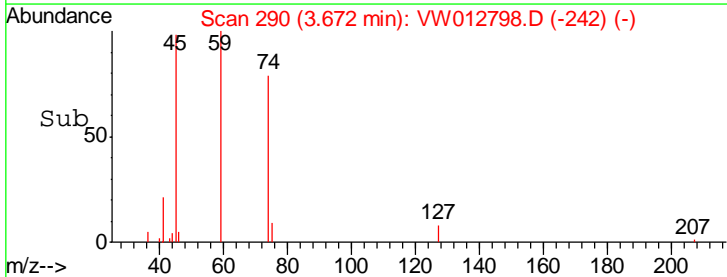
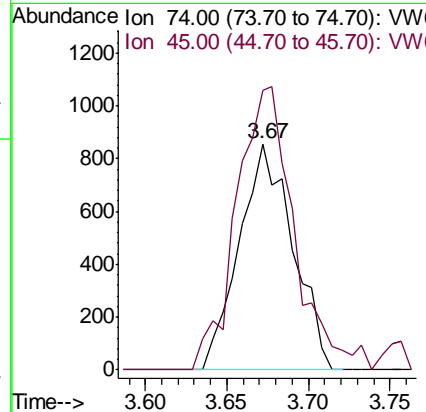
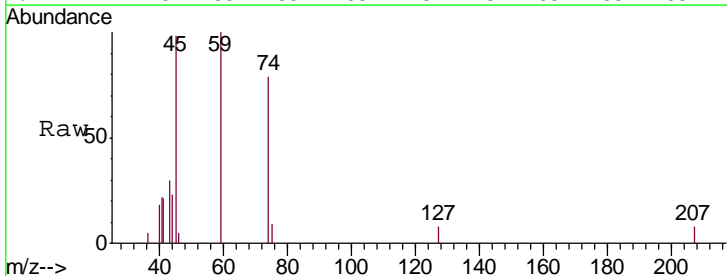
Instrument : MSVOA\_W  
 ClientSampled : PAR-11-D2-(0)

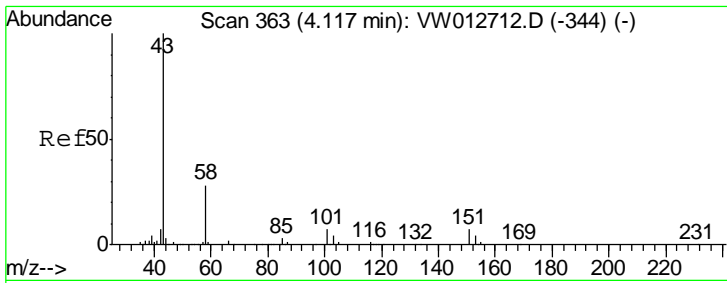
Tgt Ion: 168 Resp: 256099  
 Ion Ratio Lower Upper  
 168 100  
 99 57.1 47.8 71.6



#8  
 Diethyl Ether  
 Concen: 1.636 ug/l  
 RT: 3.67 min Scan# 290  
 Delta R.T. -0.01 min  
 Lab File: VW012798.D  
 Acq: 09 Sep 2019 04:16

Tgt Ion: 74 Resp: 1963  
 Ion Ratio Lower Upper  
 74 100  
 45 134.3 58.8 176.4

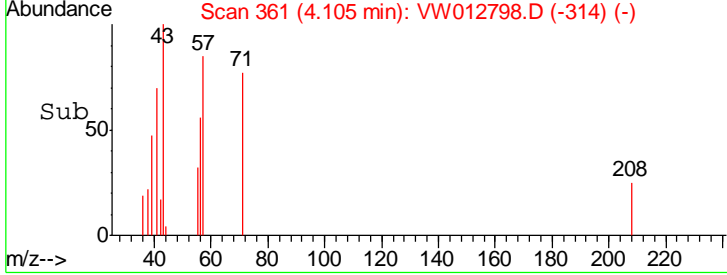
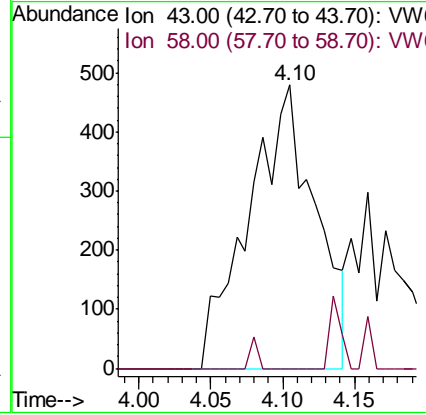
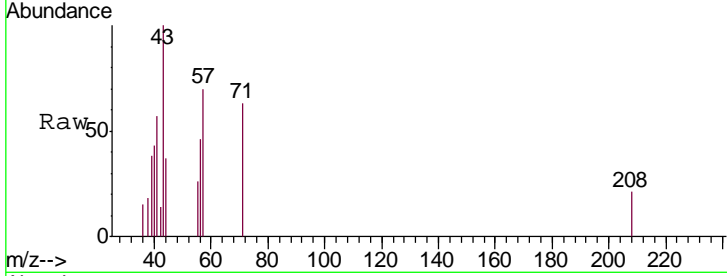




#16  
 Acetone  
 Concen: 1.972 ug/l  
 RT: 4.10 min Scan# 361  
 Delta R.T. -0.01 min  
 Lab File: VW012798.D  
 Acq: 09 Sep 2019 04:16

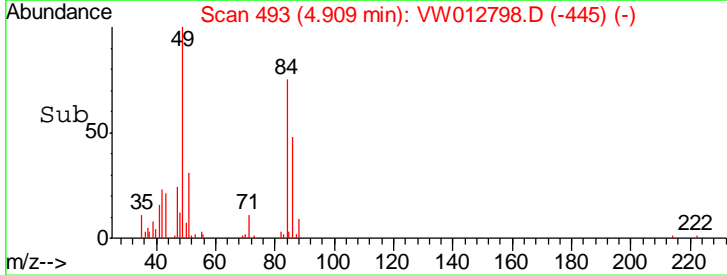
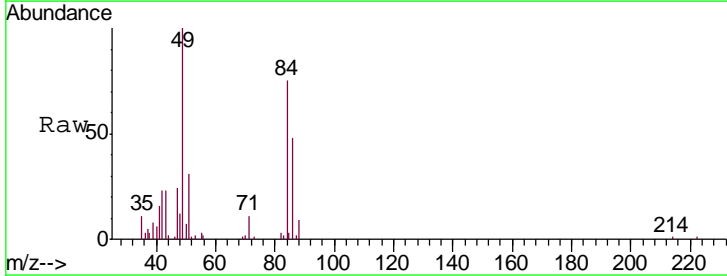
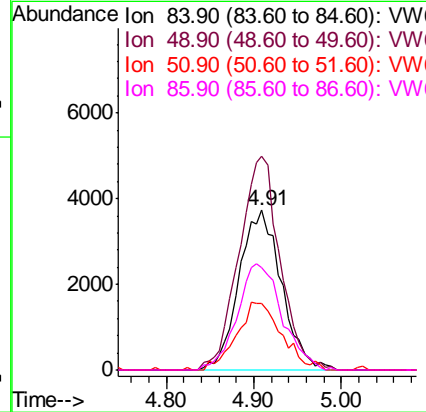
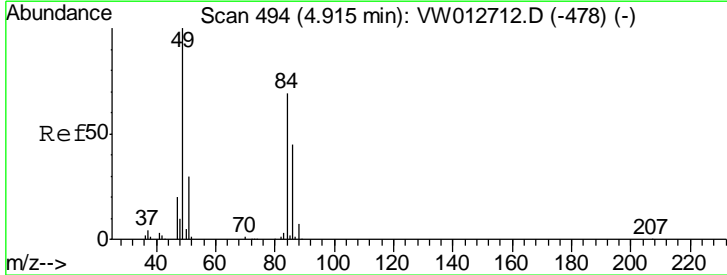
**Instrument :**  
 MSVOA\_W  
**ClientSampled :**  
 PAR-11-D2-(0)

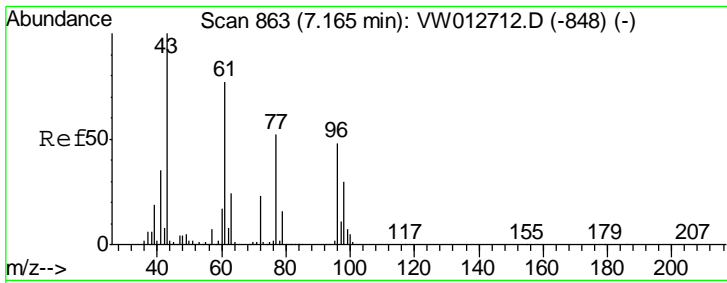
Tgt Ion: 43 Resp: 1538  
 Ion Ratio Lower Upper  
 43 100  
 58 0.0 22.6 33.8#



#20  
 Methylene Chloride  
 Concen: 5.158 ug/l  
 RT: 4.91 min Scan# 493  
 Delta R.T. -0.01 min  
 Lab File: VW012798.D  
 Acq: 09 Sep 2019 04:16

Tgt Ion: 84 Resp: 12589  
 Ion Ratio Lower Upper  
 84 100  
 49 133.7 115.4 173.0  
 51 41.4 34.9 52.3  
 86 64.1 52.2 78.4

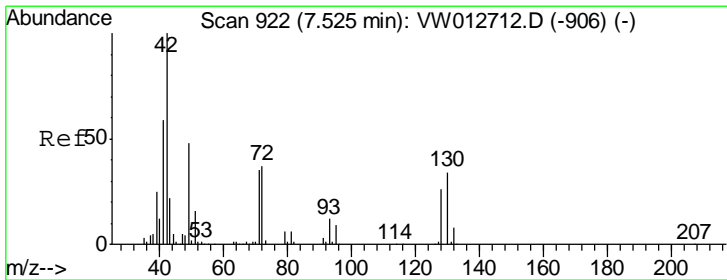
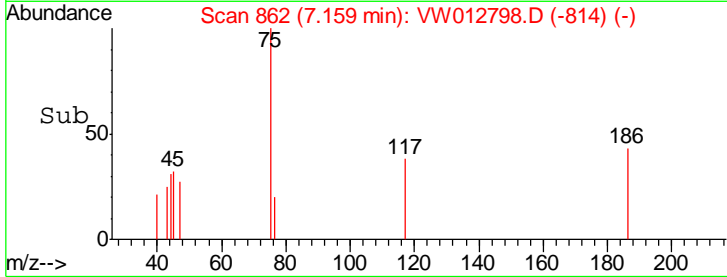
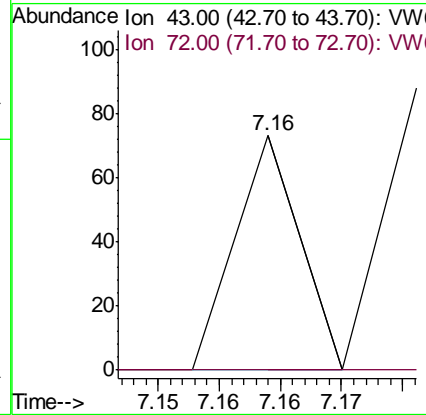
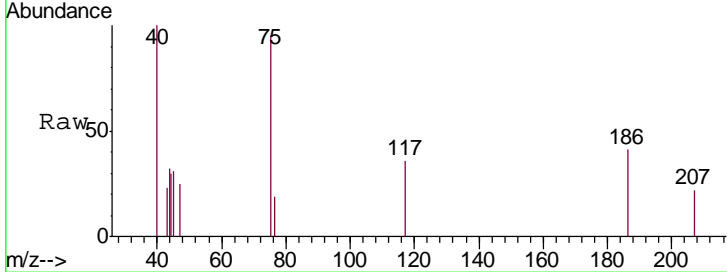




#25  
 2-Butanone  
 Concen: 19.702 ug/l  
 RT: 7.16 min Scan# 862  
 Delta R.T. -0.01 min  
 Lab File: VW012798.D  
 Acq: 09 Sep 2019 04:16

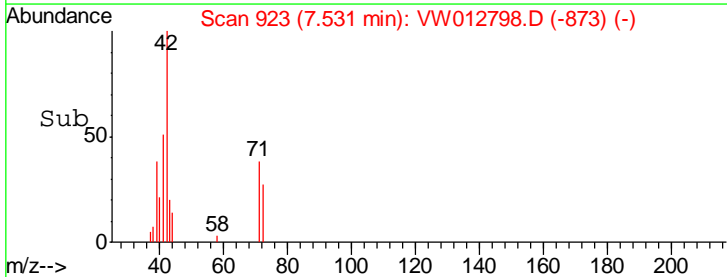
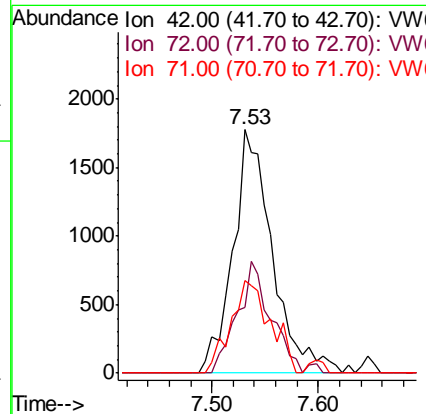
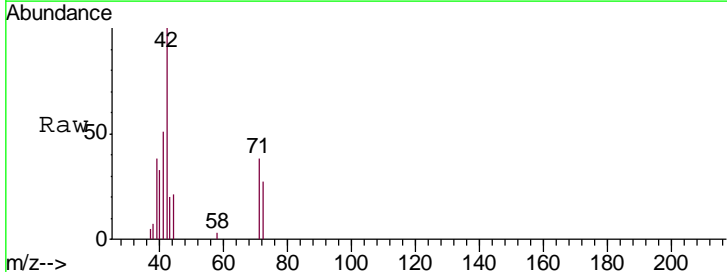
Instrument :  
 MSVOA\_W  
 ClientSampleId :  
 PAR-11-D2-(0)

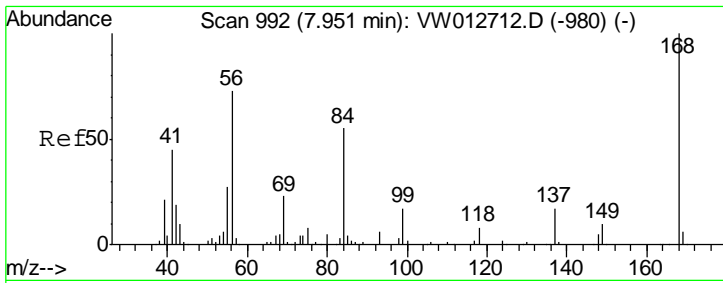
Tgt Ion: 43 Resp: 27  
 Ion Ratio Lower Upper  
 43 100  
 72 0.0 18.0 27.0#



#29  
 Tetrahydrofuran  
 Concen: 7.307 ug/l  
 RT: 7.53 min Scan# 923  
 Delta R.T. 0.01 min  
 Lab File: VW012798.D  
 Acq: 09 Sep 2019 04:16

Tgt Ion: 42 Resp: 4603  
 Ion Ratio Lower Upper  
 42 100  
 72 39.1 28.4 42.6  
 71 38.2 27.1 40.7

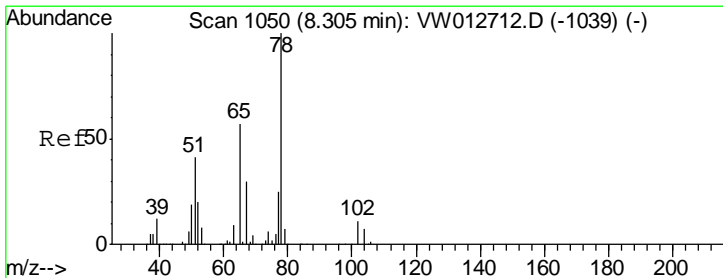
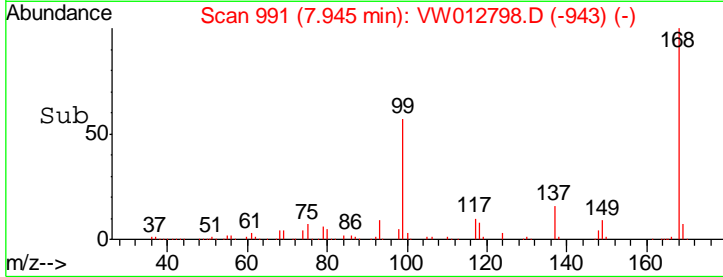
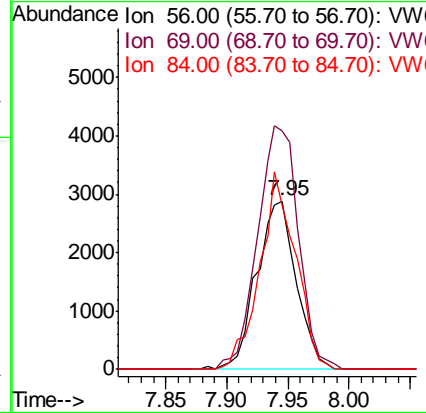
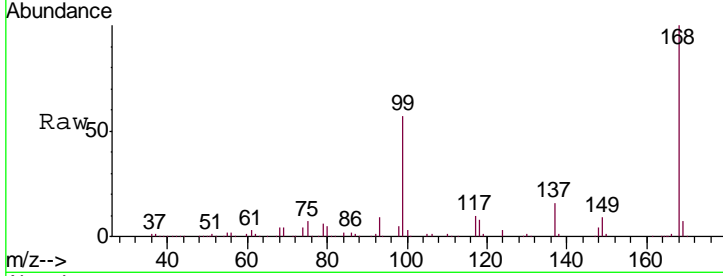




#31  
 Cyclohexane  
 Concen: 1.547 ug/l  
 RT: 7.95 min Scan# 991  
 Delta R.T. -0.01 min  
 Lab File: VW012798.D  
 Acq: 09 Sep 2019 04:16

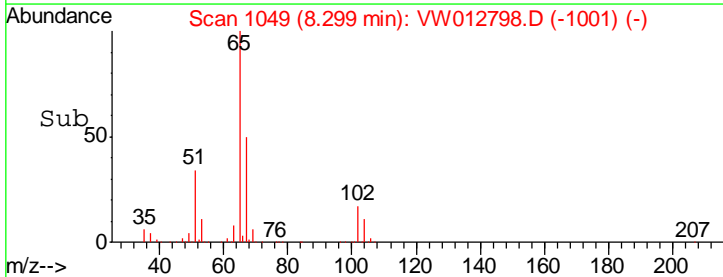
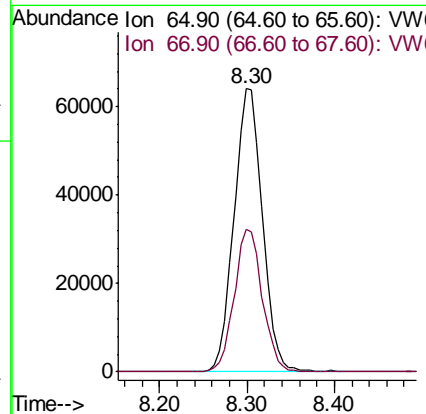
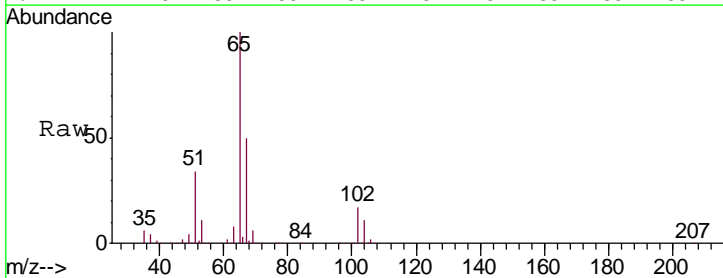
Instrument :  
 MSVOA\_W  
 ClientSampled :  
 PAR-11-D2-(0)

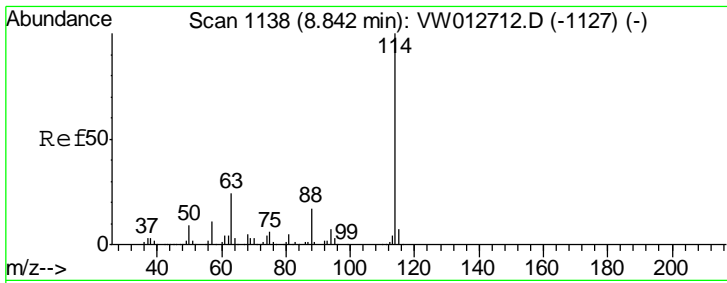
Tgt Ion	Resp	Lower	Upper
56	100		
69	142.0	25.7	38.5#
84	97.7	60.4	90.6#



#33  
 1,2-Dichloroethane-d4  
 Concen: 50.648 ug/l  
 RT: 8.30 min Scan# 1049  
 Delta R.T. -0.01 min  
 Lab File: VW012798.D  
 Acq: 09 Sep 2019 04:16

Tgt Ion	Resp	Lower	Upper
65	100		
67	50.2	0.0	101.8

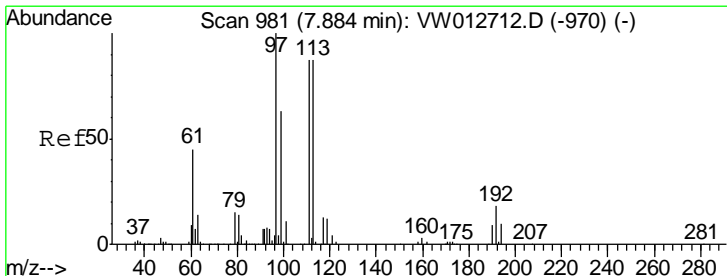
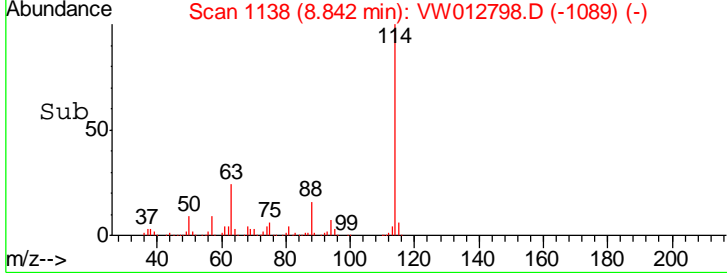
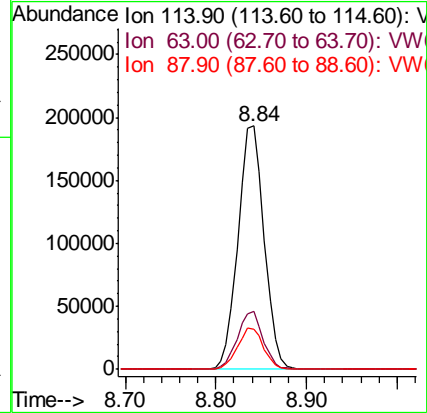
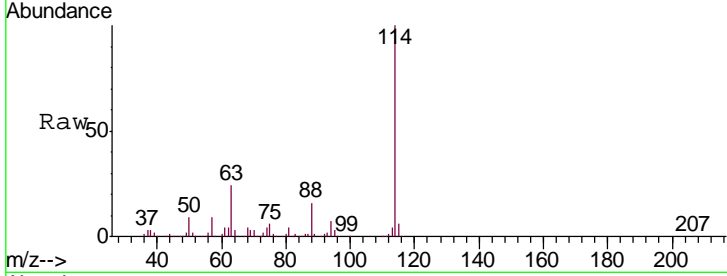




#34  
 1,4-Difluorobenzene  
 Concen: 50.000 ug/l  
 RT: 8.84 min Scan# 1138  
 Delta R.T. 0.00 min  
 Lab File: VW012798.D  
 Acq: 09 Sep 2019 04:16

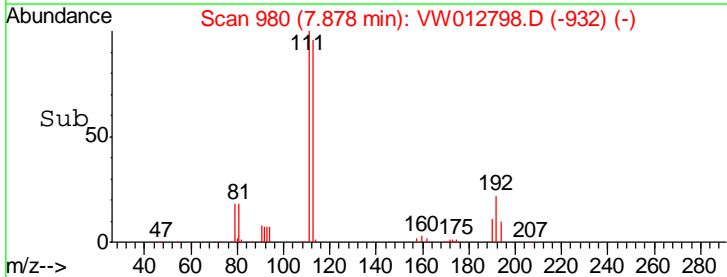
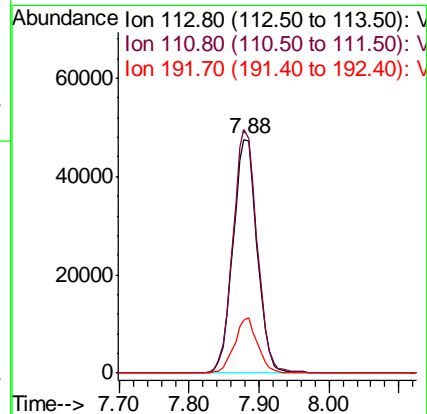
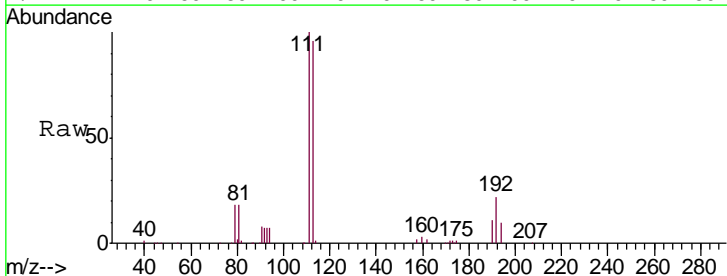
Instrument :  
 MSVOA\_W  
 ClientSampleId :  
 PAR-11-D2-(0)

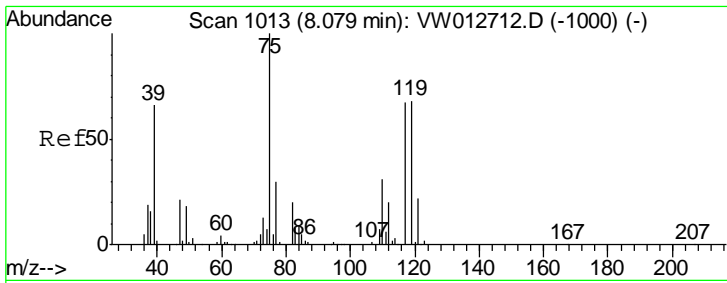
Tgt Ion	Resp	Lower	Upper
114	100		
63	23.8	0.0	47.2
88	16.5	0.0	34.0



#35  
 Dibromofluoromethane  
 Concen: 49.580 ug/l  
 RT: 7.88 min Scan# 980  
 Delta R.T. -0.01 min  
 Lab File: VW012798.D  
 Acq: 09 Sep 2019 04:16

Tgt Ion	Resp	Lower	Upper
113	100		
111	104.0	80.2	120.4
192	22.5	17.3	25.9

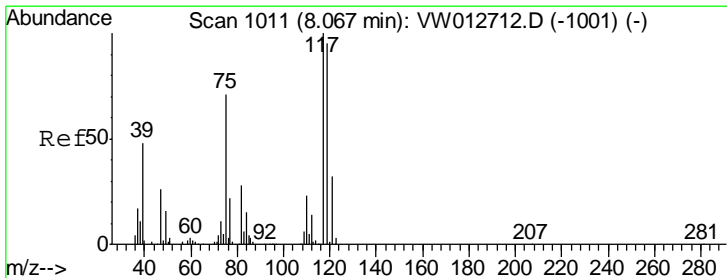
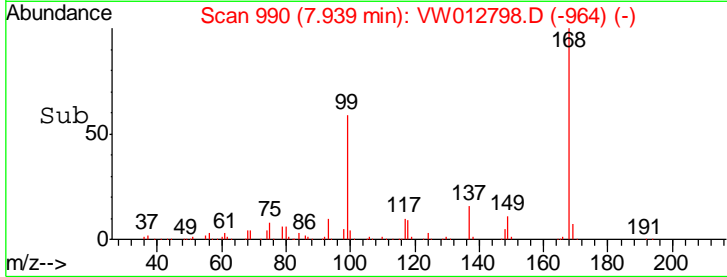
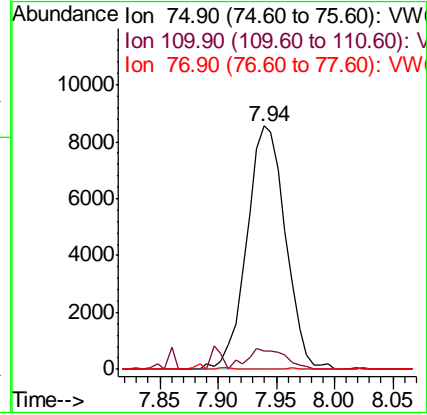
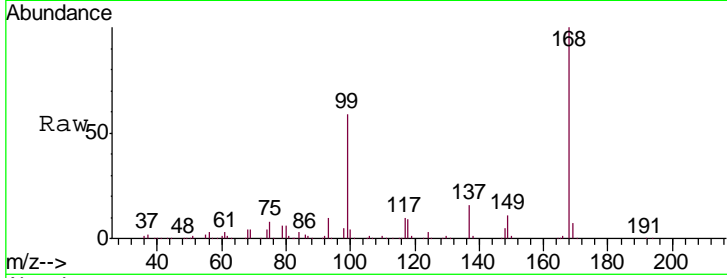




#36  
 1,1-Dichloropropene  
 Concen: 5.722 ug/l  
 RT: 7.94 min Scan# 990  
 Delta R.T. -0.14 min  
 Lab File: VW012798.D  
 Acq: 09 Sep 2019 04:16

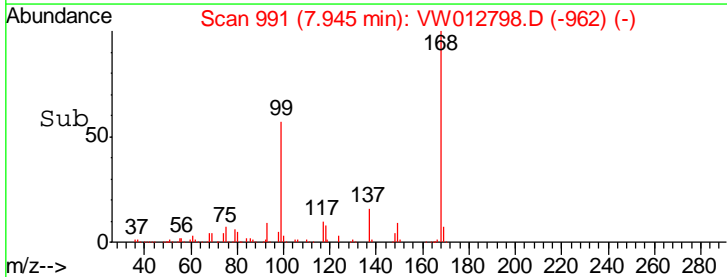
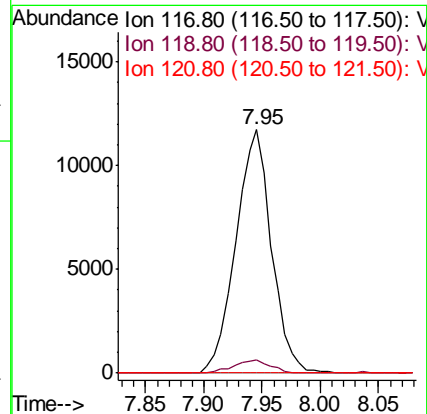
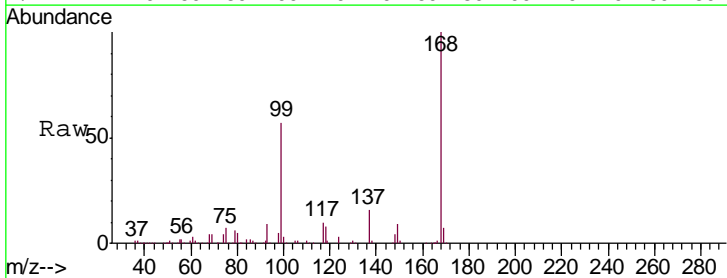
Instrument :  
 MSVOA\_W  
 ClientSampled :  
 PAR-11-D2-(0)

Tgt Ion	Resp	Lower	Upper
75	19694		
110	8.5	15.9	47.7#
77	0.0	25.0	37.4#

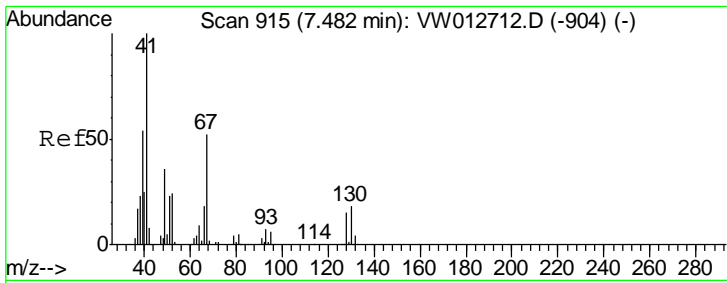


#38  
 Carbon Tetrachloride  
 Concen: 7.343 ug/l  
 RT: 7.95 min Scan# 991  
 Delta R.T. -0.12 min  
 Lab File: VW012798.D  
 Acq: 09 Sep 2019 04:16

Tgt Ion	Resp	Lower	Upper
117	24914		
119	5.5	76.2	114.2#
121	0.0	25.4	38.2#



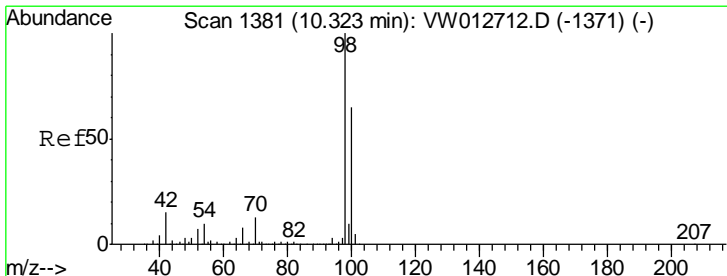
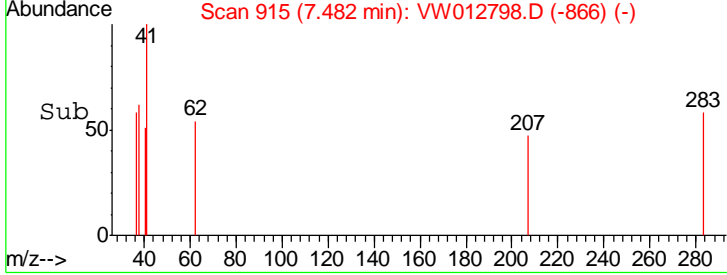
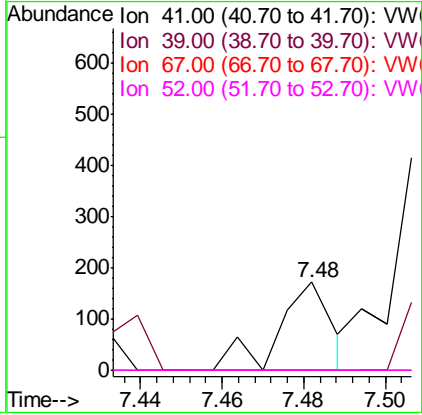
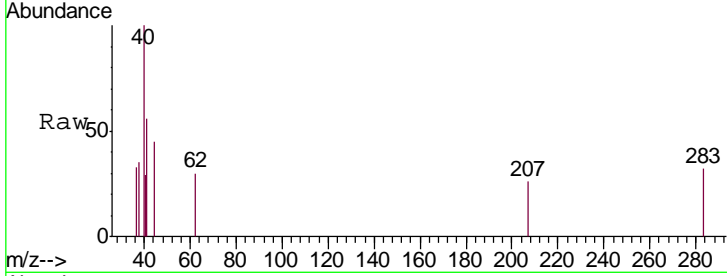




#41  
 Methacrylonitrile  
 Concen: 3.934 ug/l  
 RT: 7.48 min Scan# 915  
 Delta R.T. 0.00 min  
 Lab File: VW012798.D  
 Acq: 09 Sep 2019 04:16

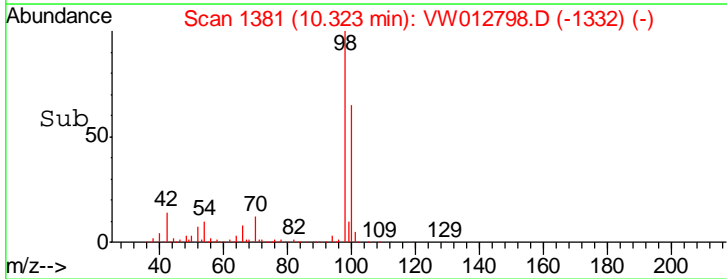
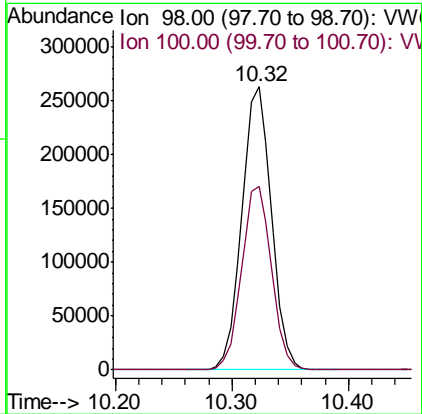
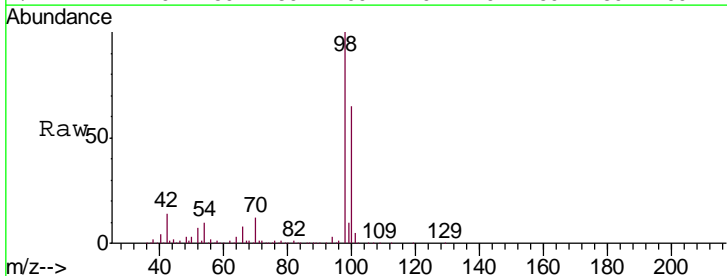
**Instrument :**  
 MSVOA\_W  
**ClientSampled :**  
 PAR-11-D2-(0)

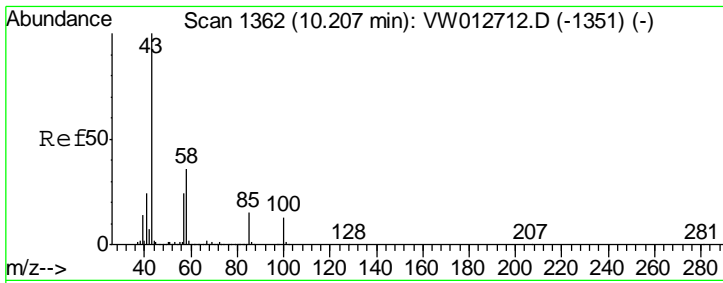
Tgt Ion	Resp	Lower	Upper
41	100		
39	0.0	47.5	71.3#
67	0.0	45.1	67.7#
52	0.0	20.2	30.2#



#50  
 Toluene-d8  
 Concen: 51.712 ug/l  
 RT: 10.32 min Scan# 1381  
 Delta R.T. 0.00 min  
 Lab File: VW012798.D  
 Acq: 09 Sep 2019 04:16

Tgt Ion	Resp	Lower	Upper
98	100		
100	65.4	52.2	78.4

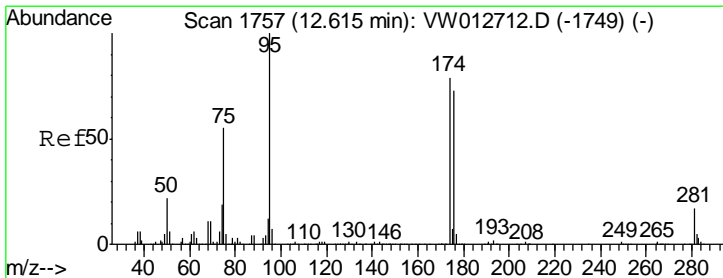
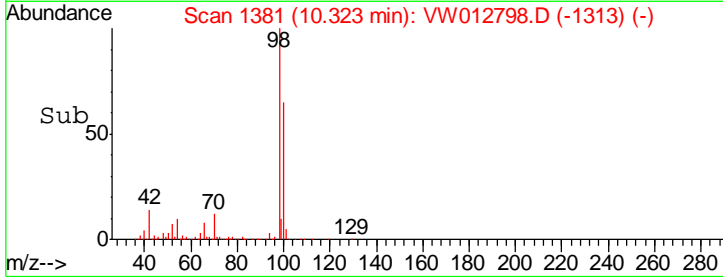
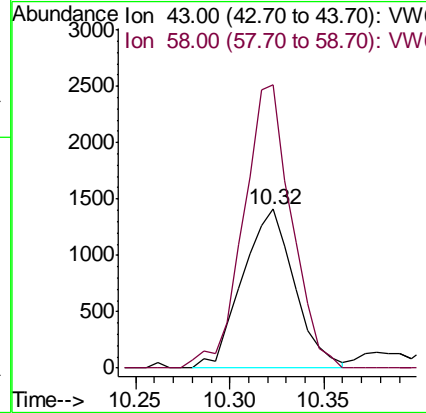
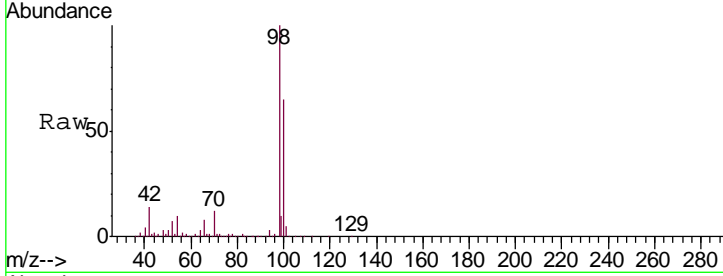




#51  
 4-Methyl-2-Pentanone  
 Concen: 1.239 ug/l  
 RT: 10.32 min Scan# 1381  
 Delta R.T. 0.12 min  
 Lab File: VW012798.D  
 Acq: 09 Sep 2019 04:16

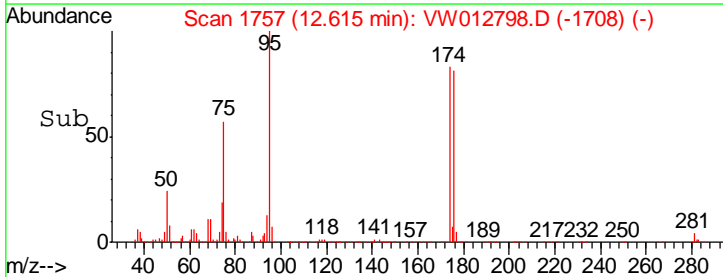
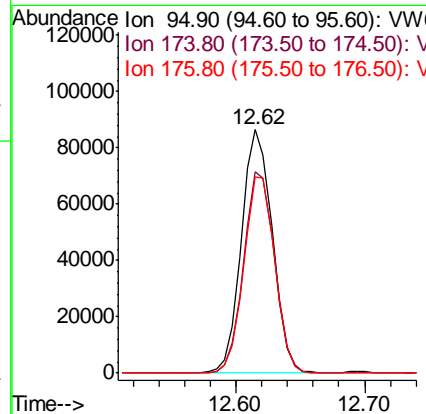
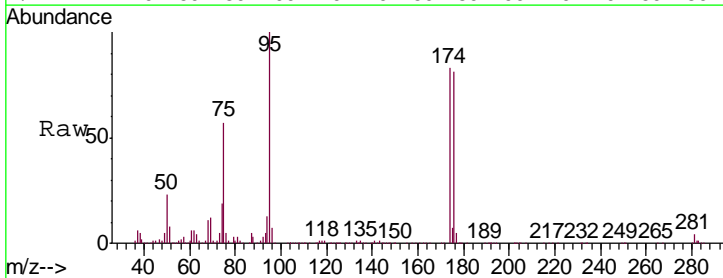
Instrument :  
 MSVOA\_W  
 ClientSampled :  
 PAR-11-D2-(0)

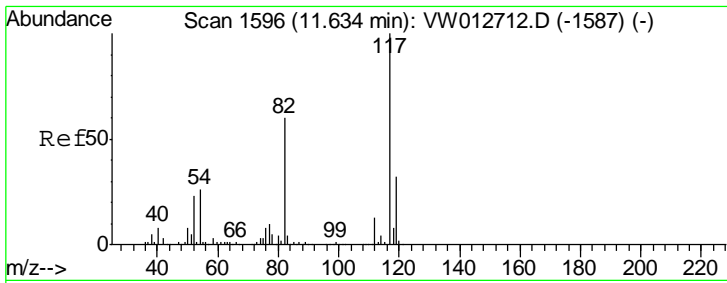
Tgt Ion: 43 Resp: 2702  
 Ion Ratio Lower Upper  
 43 100  
 58 164.2 28.4 42.6#



#62  
 4-Bromofluorobenzene  
 Concen: 43.411 ug/l  
 RT: 12.62 min Scan# 1757  
 Delta R.T. 0.00 min  
 Lab File: VW012798.D  
 Acq: 09 Sep 2019 04:16

Tgt Ion: 95 Resp: 142197  
 Ion Ratio Lower Upper  
 95 100  
 174 83.3 0.0 161.0  
 176 81.3 0.0 156.4

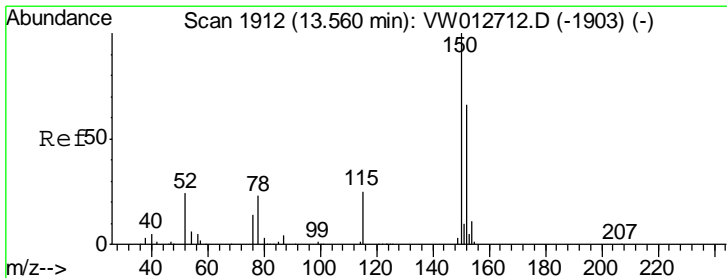
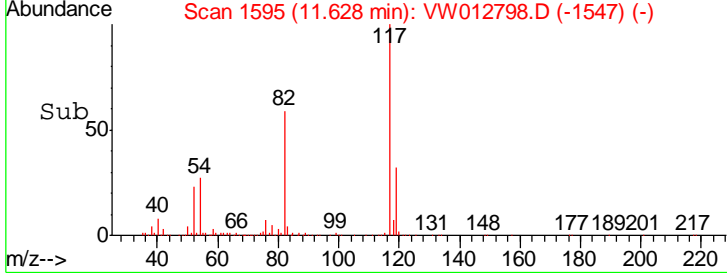
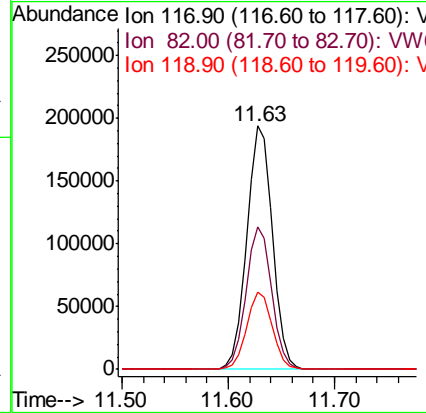
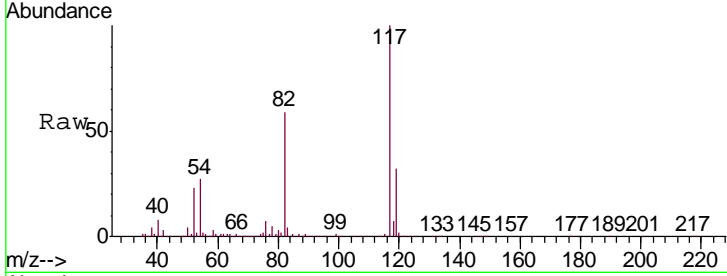




#63  
 Chlorobenzene-d5  
 Concen: 50.000 ug/l  
 RT: 11.63 min Scan# 1595  
 Delta R.T. -0.01 min  
 Lab File: VW012798.D  
 Acq: 09 Sep 2019 04:16

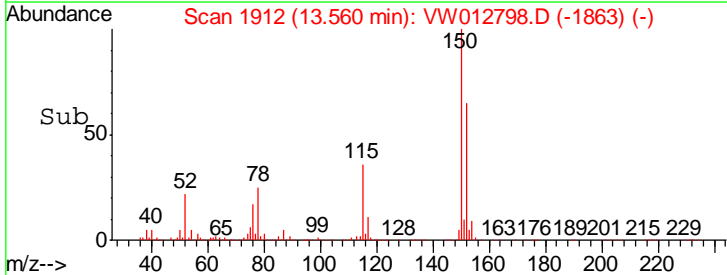
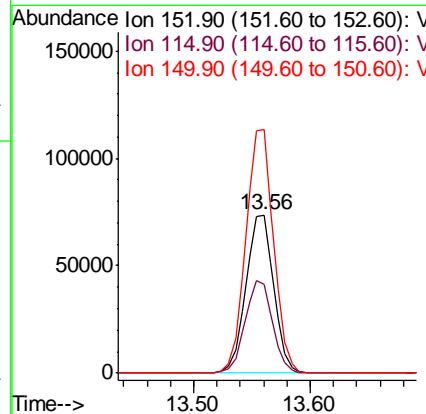
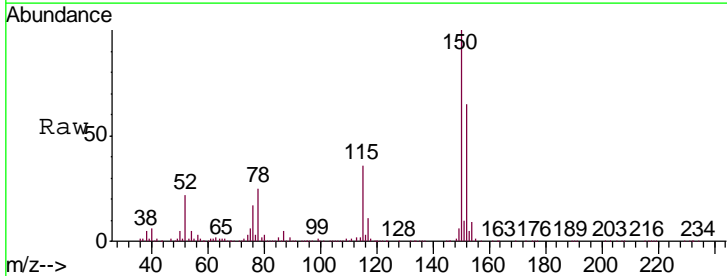
Instrument : MSVOA\_W  
 ClientSampled : PAR-11-D2-(0)

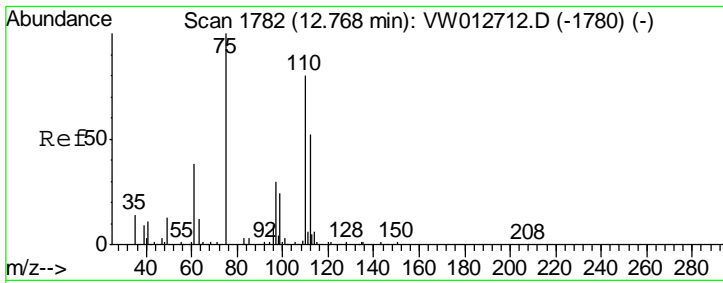
Tgt Ion	Resp	Lower	Upper
117	327697		
82	58.5	48.2	72.4
119	31.8	25.8	38.6



#72  
 1,4-Dichlorobenzene-d4  
 Concen: 50.000 ug/l  
 RT: 13.56 min Scan# 1912  
 Delta R.T. 0.00 min  
 Lab File: VW012798.D  
 Acq: 09 Sep 2019 04:16

Tgt Ion	Resp	Lower	Upper
152	122117		
152	100		
115	58.2	30.0	90.1
150	154.4	0.0	349.0

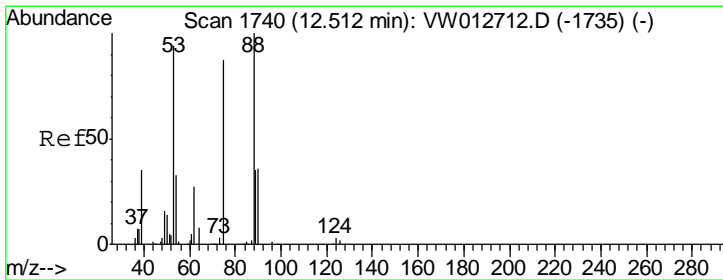
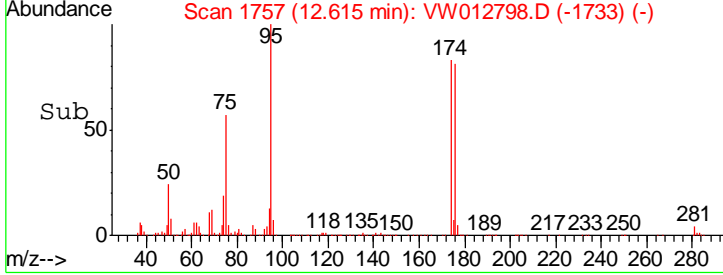
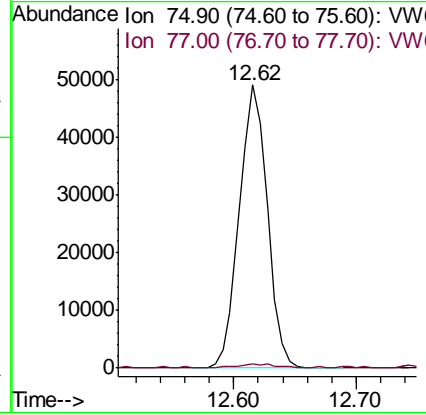
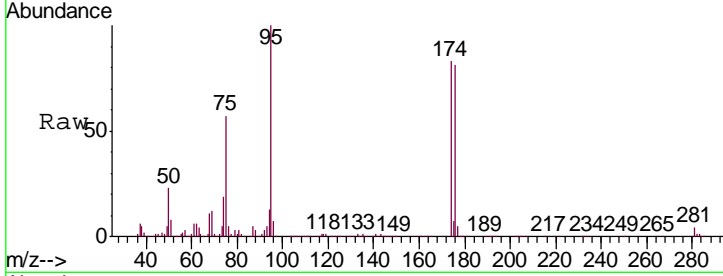




#76  
 1,2,3-Trichloropropane  
 Concen: 62.240 ug/l  
 RT: 12.62 min Scan# 1757  
 Delta R.T. -0.15 min  
 Lab File: VW012798.D  
 Acq: 09 Sep 2019 04:16

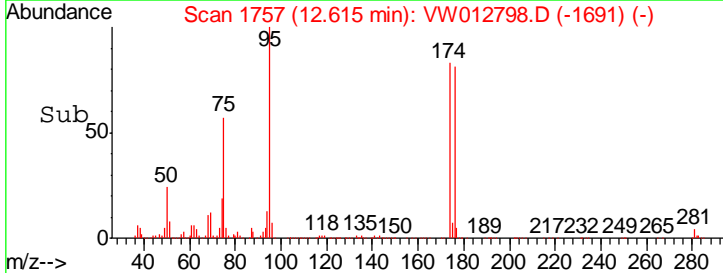
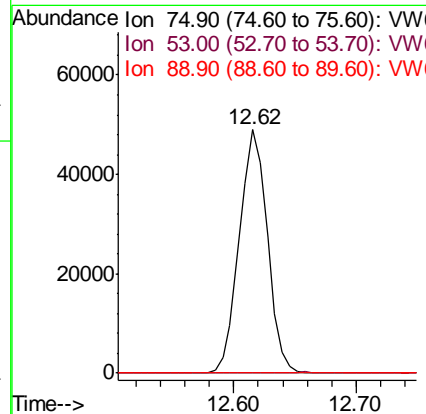
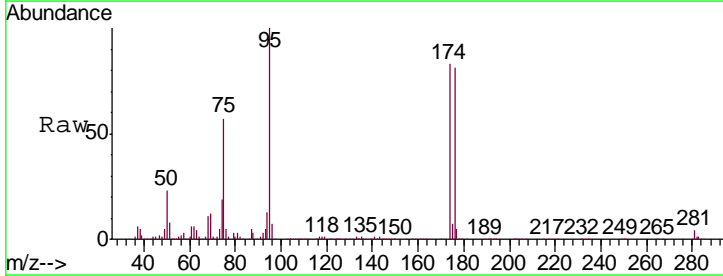
Instrument :  
 MSVOA\_W  
 ClientSampled :  
 PAR-11-D2-(0)

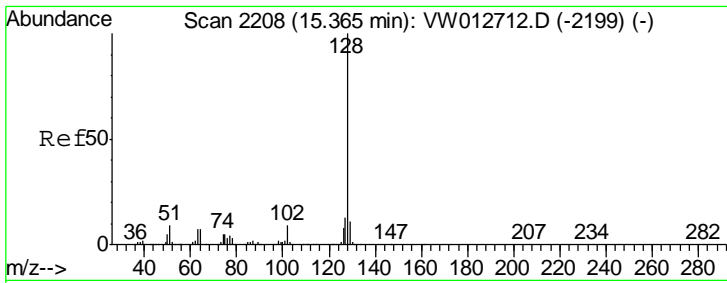
Tgt Ion	Resp	Lower	Upper
75	100		
77	1.5	0.0	0.0#



#81  
 trans-1,4-Dichloro-2-butene  
 Concen: 131.642 ug/l  
 RT: 12.62 min Scan# 1757  
 Delta R.T. 0.10 min  
 Lab File: VW012798.D  
 Acq: 09 Sep 2019 04:16

Tgt Ion	Resp	Lower	Upper
75	100		
53	0.4	87.6	131.4#
89	0.1	35.5	53.3#





#95  
 Naphthalene  
 Concen: 4.491 ug/l  
 RT: 15.36 min Scan# 2208  
 Delta R.T. 0.00 min  
 Lab File: VW012798.D  
 Acq: 09 Sep 2019 04:16

Instrument : MSVOA\_W  
 ClientSampled : PAR-11-D2-(0)

Tgt Ion	Resp	Lower	Upper
128	100		
127	0.0	10.7	16.1#
129	15.7	8.7	13.1#

