

Data Path : Z:\VOASRV\HPCHEM1\MSVOA W\DATA\VW090819\
 Data File : VW012797.D
 Acq On : 09 Sep 2019 03:50
 Operator : SY/VA
 Sample : K4623-09
 Misc : 5.37G/5ML/MSVOA W/SOIL
 ALS Vial : 38 Sample Multiplier: 1

Instrument :
 MSVOA_W
 ClientSampleId :
 PAR-11-D1-(0)

Integration Parameters: RTEINT.P
 Integrator: RTE
 Smoothing : ON Filtering: 5
 Sampling : 1 Min Area: 3 % of largest Peak
 Start Thrs: 0.2 Max Peaks: 100
 Stop Thrs : 0 Peak Location: TOP

If leading or trailing edge < 100 prefer < Baseline drop else tangent >
 Peak separation: 5

Method : Z:\VOASRV\HPCHEM1\MSVOA_W\METHOD\82W090719S.M
 Title : SW846 8260

Signal : TIC

| peak # | R.T. min | first scan | max scan | last scan | PK TY | peak height | corr. area | corr. % max. | % of total |
|--------|----------|------------|----------|-----------|-------|-------------|------------|--------------|------------|
| 1 | 2.148 | 35 | 40 | 48 | rBV | 11528 | 22791 | 2.10% | 0.408% |
| 2 | 4.910 | 482 | 493 | 508 | rVB4 | 9014 | 33546 | 3.09% | 0.601% |
| 3 | 7.537 | 915 | 924 | 932 | rBV4 | 3938 | 11619 | 1.07% | 0.208% |
| 4 | 7.878 | 970 | 980 | 985 | rBV | 140181 | 332310 | 30.64% | 5.954% |
| 5 | 7.946 | 985 | 991 | 1002 | rVB | 293634 | 654820 | 60.37% | 11.732% |
| 6 | 8.305 | 1040 | 1050 | 1062 | rBV | 148721 | 334453 | 30.83% | 5.992% |
| 7 | 8.842 | 1127 | 1138 | 1148 | rBV | 407763 | 822688 | 75.85% | 14.740% |
| 8 | 10.323 | 1373 | 1381 | 1389 | rBV | 604364 | 1084693 | 100.00% | 19.434% |
| 9 | 10.707 | 1438 | 1444 | 1449 | rBV2 | 5940 | 11804 | 1.09% | 0.211% |
| 10 | 11.628 | 1586 | 1595 | 1603 | rBV | 498689 | 851439 | 78.50% | 15.255% |
| 11 | 12.615 | 1751 | 1757 | 1764 | rBV | 381087 | 649771 | 59.90% | 11.642% |
| 12 | 13.554 | 1905 | 1911 | 1918 | rBV | 387474 | 682090 | 62.88% | 12.221% |
| 13 | 15.493 | 2225 | 2229 | 2235 | rVB | 54504 | 89446 | 8.25% | 1.603% |

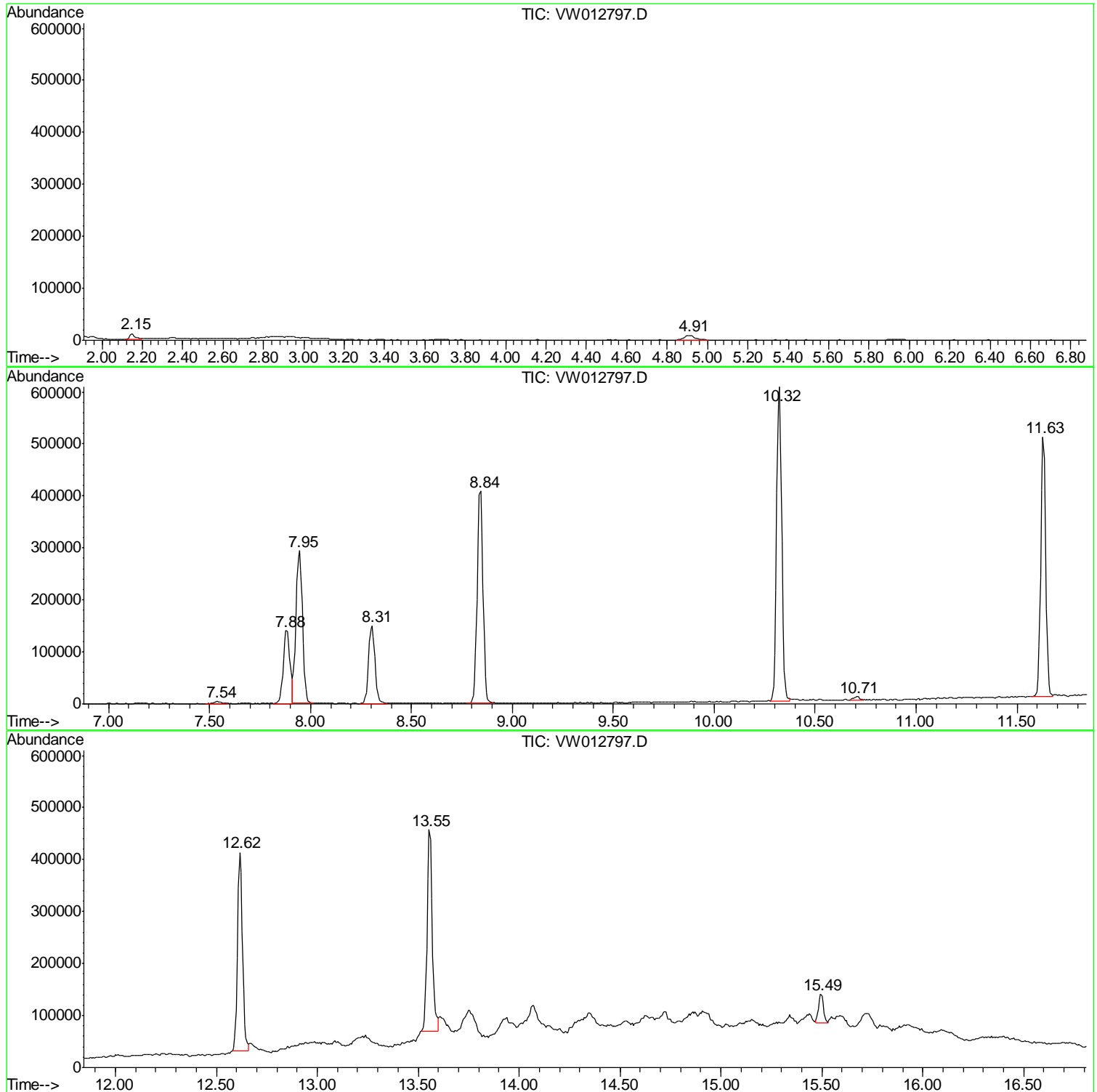
Sum of corrected areas: 5581470

Data Path : Z:\VOASRV\HPCHEM1\MSVOA W\DATA\VW090819\
Data File : VW012797.D
Acq On : 09 Sep 2019 03:50
Operator : SY/VA
Sample : K4623-09
Misc : 5.37G/5ML/MSVOA W/SOIL
ALS Vial : 38 Sample Multiplier: 1

Instrument :
MSVOA_W
ClientSampleId :
PAR-11-D1-(0)

Quant Method : Z:\VOASRV\HPCHEM1\MSVOA_W\METHOD\82W090719S.M
Quant Title : SW846 8260

TIC Library : C:\DATABASE\NIST11.L
TIC Integration Parameters: LSCINT.P



Data Path : Z:\VOASRV\HPCHEM1\MSVOA W\DATA\VW090819\
 Data File : VW012797.D
 Acq On : 09 Sep 2019 03:50
 Operator : SY/VA
 Sample : K4623-09
 Misc : 5.37G/5ML/MSVOA W/SOIL
 ALS Vial : 38 Sample Multiplier: 1

Instrument :
 MSVOA_W
 ClientSampleID :
 PAR-11-D1-(0)

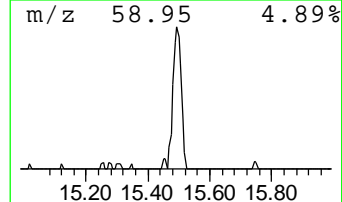
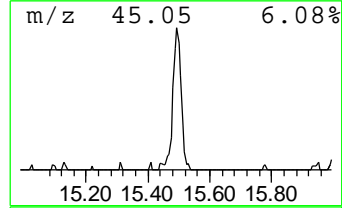
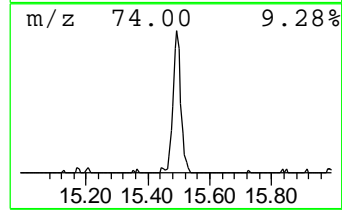
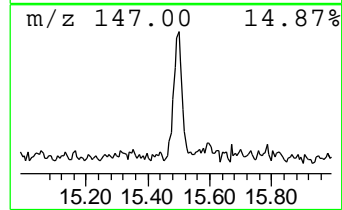
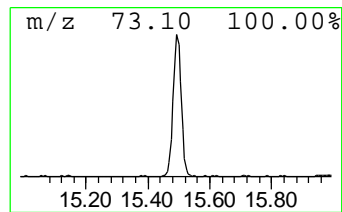
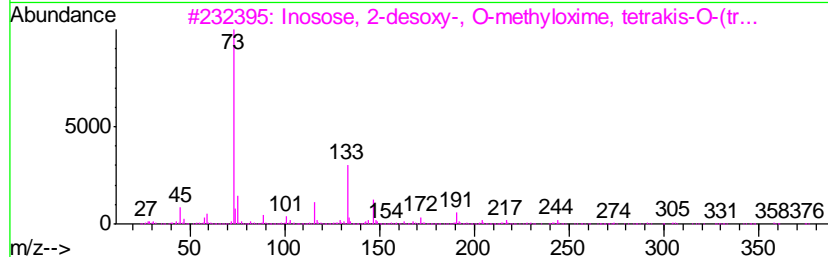
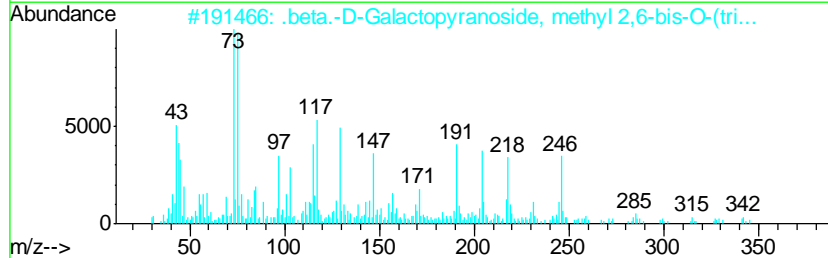
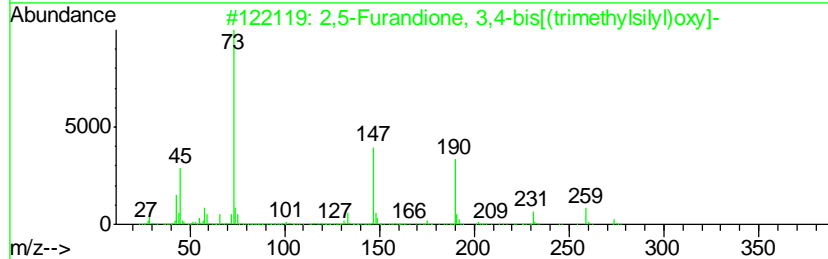
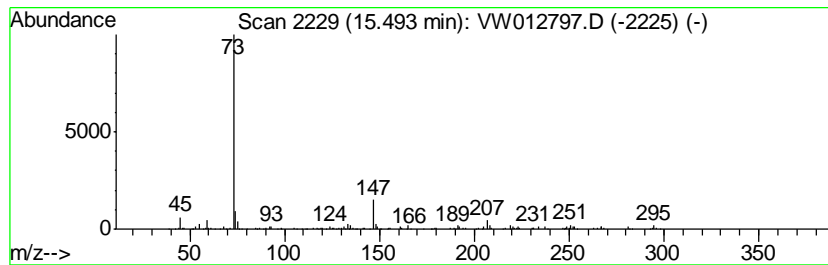
Quant Method : Z:\VOASRV\HPCHEM1\MSVOA_W\METHOD\82W090719S.M
 Quant Title : SW846 8260

TIC Library : C:\DATABASE\NIST11.L
 TIC Integration Parameters: LSCINT.P

 Peak Number 1 unknown15.49 Concentration Rank 1

| R.T. | EstConc | Area | Relative to ISTD | R.T. |
|-------|-----------|-------|------------------------|-------|
| 15.49 | 6.56 ug/l | 89446 | 1,4-Dichlorobenzene-d4 | 13.55 |

| Hit# | of | Tentative ID | MW | MolForm | CAS# | Qual |
|------|----|-------------------------------------|-----|--------------|--------------|------|
| 1 | 5 | 2,5-Furandione, 3,4-bis[(trimeth... | 274 | C10H18O5Si2 | 095920-35-7 | 47 |
| 2 | | .beta.-D-Galactopyranoside, meth... | 362 | C14H31BO6Si2 | 056211-06-4 | 47 |
| 3 | | Inosose, 2-desoxy-, O-methyloxim... | 479 | C19H45NO5Si4 | 1000149-50-8 | 38 |
| 4 | | D-(-)-Erythrose, tris(trimethyls... | 423 | C16H41NO4Si4 | 1000380-40-6 | 38 |
| 5 | | Benzeneacetic acid, 3-[(trimethy... | 296 | C14H24O3Si2 | 027750-55-6 | 37 |



Data Path : Z:\VOASRV\HPCHEM1\MSVOA_W\DATA\VW090819\
Data File : VW012797.D
Acq On : 09 Sep 2019 03:50
Operator : SY/VA
Sample : K4623-09
Misc : 5.37G/5ML/MSVOA_W/SOIL
ALS Vial : 38 Sample Multiplier: 1

Instrument :
MSVOA_W
ClientSampleId :
PAR-11-D1-(0)

Quant Method : Z:\VOASRV\HPCHEM1\MSVOA_W\METHOD\82W090719S.M
Quant Title : SW846 8260

TIC Library : C:\DATABASE\NIST11.L
TIC Integration Parameters: LSCINT.P

| TIC Top Hit name | RT | EstConc | Units | Response | --Internal Standard-- | | | |
|------------------|-------|---------|-------|----------|-----------------------|-------|--------|------|
| | | | | | # | RT | Resp | Conc |
| unknown15.49 | 15.49 | 6.6 | ug/l | 89446 | 4 | 13.55 | 682090 | 50.0 |