

Data Path : Z:\VOASRV\HPCHEM1\MSVOA W\DATA\VW090920\
 Data File : VW016499.D
 Acq On : 09 Sep 2020 16:09
 Operator : SY/VA
 Sample : L3950-05
 Misc : 6.46G/10ML/MSVOA W/SOIL
 ALS Vial : 8 Sample Multiplier: 1

Instrument :
 MSVOA_W
 ClientSampleId :
 BFWW1

Quant Time: Sep 10 05:39:29 2020
 Quant Method : Z:\VOASRV\HPCHEM1\MSVOA_W\METHOD\SOM2WLM090320S.M
 Quant Title : VOC Analysis
 QLast Update : Thu Sep 10 05:09:14 2020
 Response via : Initial Calibration

Internal Standards	R.T.	QIon	Response	Conc	Units	Dev(Min)
1) 1,4-Difluorobenzene	8.85	114	753238	25.00	ug/L	0.00
28) Chlorobenzene-d5	11.63	117	652031	25.00	ug/L	0.00
60) 1,4-Dichlorobenzene-d4	13.56	152	272299	25.00	ug/L	0.00

System Monitoring Compounds

4) Vinyl Chloride-d3	2.37	65	228384	28.58	ug/L	0.00
Spiked Amount	25.000	Range	30 - 150	Recovery	=	114.32%
7) Chloroethane-d5	2.90	69	197847	27.57	ug/L	0.00
Spiked Amount	25.000	Range	30 - 150	Recovery	=	110.28%
10) 1,1-Dichloroethene-d2	4.03	63	339093	18.45	ug/L	0.00
Spiked Amount	25.000	Range	45 - 110	Recovery	=	73.80%
20) 2-Butanone-d5	7.08	46	102285	35.84	ug/L	0.00
Spiked Amount	50.000	Range	20 - 135	Recovery	=	71.68%
24) Chloroform-d	7.65	84	438340	24.84	ug/L	0.00
Spiked Amount	25.000	Range	40 - 150	Recovery	=	99.36%
26) 1,2-Dichloroethane-d4	8.31	65	236708	24.54	ug/L	0.00
Spiked Amount	25.000	Range	70 - 130	Recovery	=	98.16%
29) Benzene-d6	8.28	84	889567	26.84	ug/L	0.00
Spiked Amount	25.000	Range	20 - 135	Recovery	=	107.36%
33) 1,2-Dichloropropane-d6	9.28	67	249834	25.66	ug/L	0.00
Spiked Amount	25.000	Range	70 - 120	Recovery	=	102.64%
37) Toluene-d8	10.33	98	833367	26.45	ug/L	0.00
Spiked Amount	25.000	Range	30 - 130	Recovery	=	105.80%
38) trans-1,3-Dichloropropene-	10.58	79	120297	24.48	ug/L	0.00
Spiked Amount	25.000	Range	30 - 135	Recovery	=	97.92%
39) 2-Hexanone-d5	10.93	63	88278	44.35	ug/L	0.00
Spiked Amount	50.000	Range	20 - 135	Recovery	=	88.70%
48) 1,1,2,2-Tetrachloroethane-	12.69	84	189406	23.00	ug/L	0.00
Spiked Amount	25.000	Range	45 - 120	Recovery	=	92.00%
61) 1,2-Dichlorobenzene-d4	13.85	152	244944	26.03	ug/L	0.00
Spiked Amount	25.000	Range	75 - 120	Recovery	=	104.12%

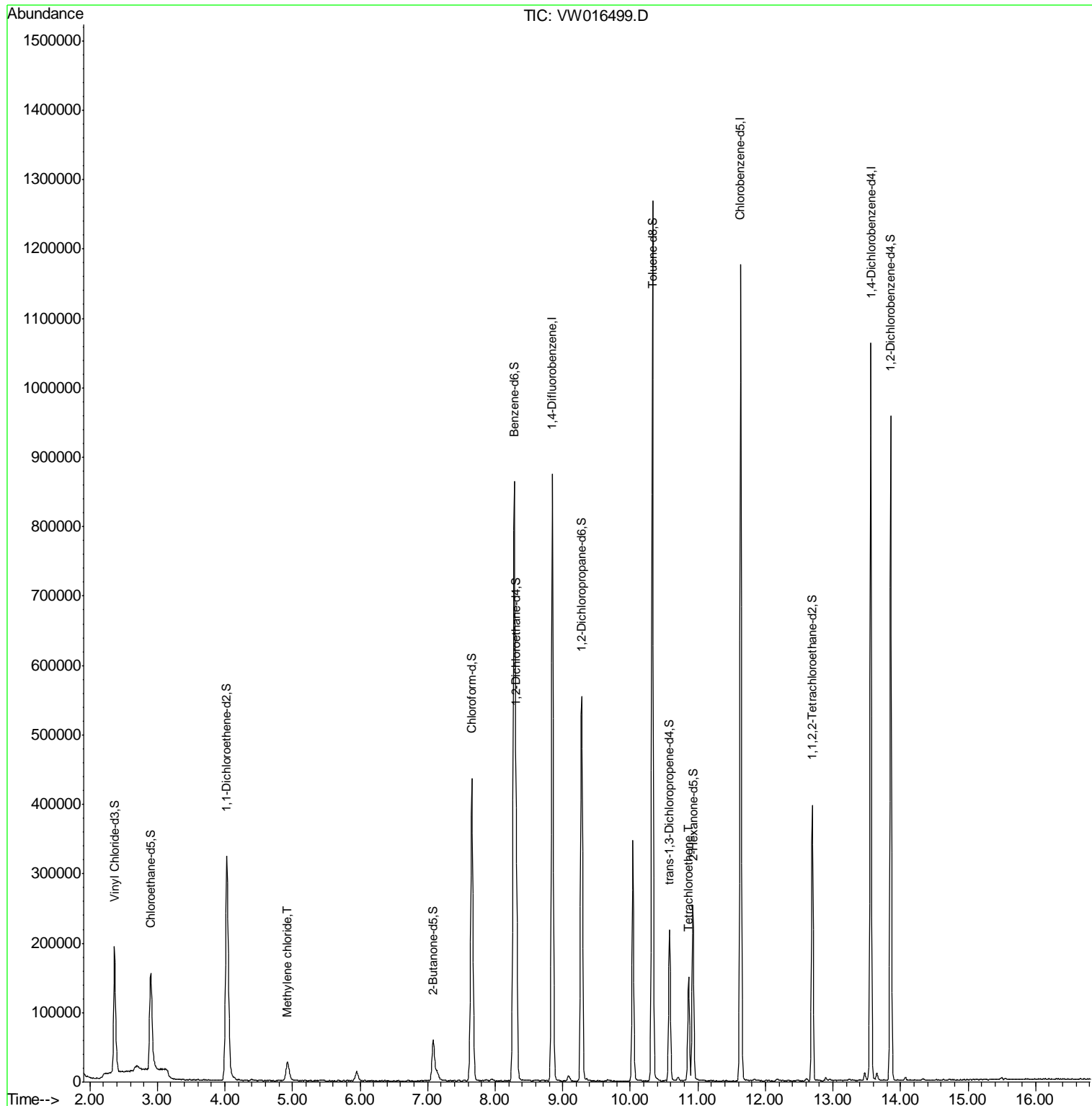
Target Compounds					Ovalue
16) Methylene chloride	4.93	84	22397	1.905 ug/L	94
47) Tetrachloroethene	10.87	164	30943	3.907 ug/L	97

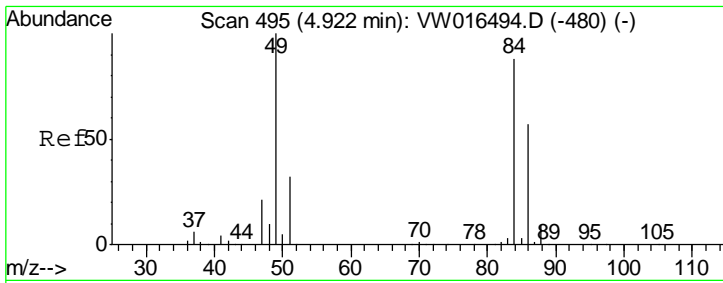
(#) = qualifier out of range (m) = manual integration (+) = signals summed

Data Path : Z:\VOASRV\HPCHEM1\MSVOA W\DATA\VW090920\
 Data File : VW016499.D
 Acq On : 09 Sep 2020 16:09
 Operator : SY/VA
 Sample : L3950-05
 Misc : 6.46G/10ML/MSVOA W/SOIL
 ALS Vial : 8 Sample Multiplier: 1

Instrument :
 MSVOA_W
 Client Sampled :
 BFWW1

Quant Time: Sep 10 05:39:29 2020
 Quant Method : Z:\VOASRV\HPCHEM1\MSVOA_W\METHOD\SOM2WLM090320S.M
 Quant Title : VOC Analysis
 QLast Update : Thu Sep 10 05:09:14 2020
 Response via : Initial Calibration

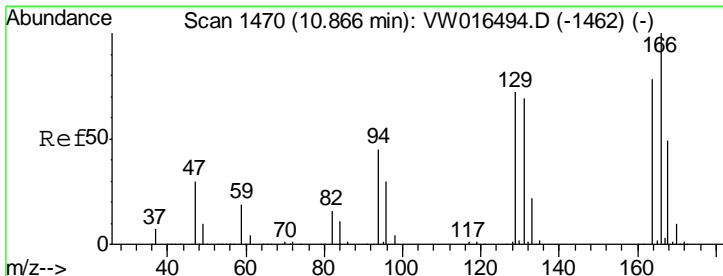
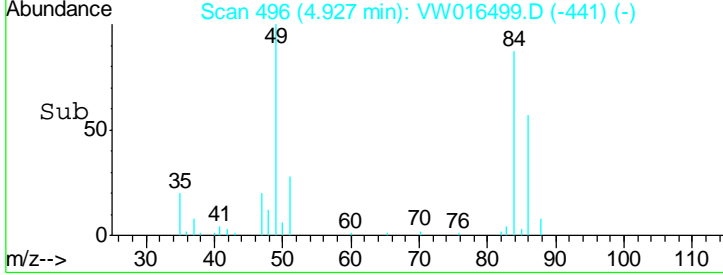
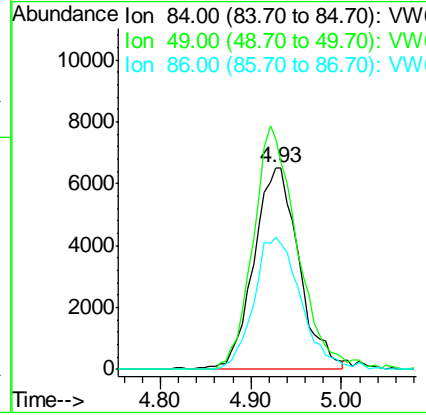
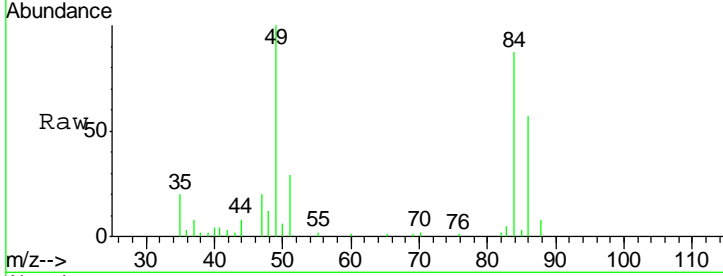




#16
 Methylene chloride
 Concen: 1.905 ug/L
 RT: 4.93 min Scan# 496
 Delta R.T. 0.01 min
 Lab File: VW016499.D
 Acq: 09 Sep 2020 16:09

Instrument :
 MSVOA_W
 ClientSampled :
 BFWW1

Tgt Ion	Resp	Lower	Upper
84	22397		
84	100		
49	114.3	86.7	160.9
86	65.4	44.9	83.5



#47
 Tetrachloroethene
 Concen: 3.907 ug/L
 RT: 10.87 min Scan# 1470
 Delta R.T. -0.00 min
 Lab File: VW016499.D
 Acq: 09 Sep 2020 16:09

Tgt Ion	Resp	Lower	Upper
164	30943		
164	100		
129	96.7	65.7	121.9
131	94.1	61.1	113.5
166	120.3	85.0	157.8

