

Data Path : Z:\VOASRV\HPCHEM1\MSVOA W\DATA\VW091118\
 Data File : VW005305.D
 Acq On : 12 Sep 2018 05:56
 Operator : SY/AP
 Sample : J4847-02
 Misc : 9.74G/5ML/MSVOA W/SOIL
 ALS Vial : 47 Sample Multiplier: 1

Instrument :
 MSVOA_W
 ClientSampleId :
 FK-PS-01-040

Quant Time: Sep 12 07:38:29 2018
 Quant Method : Z:\VOASRV\HPCHEM1\MSVOA_W\METHOD\82W091018S.M
 Quant Title : SW846 8260
 QLast Update : Tue Sep 11 03:48:23 2018
 Response via : Initial Calibration

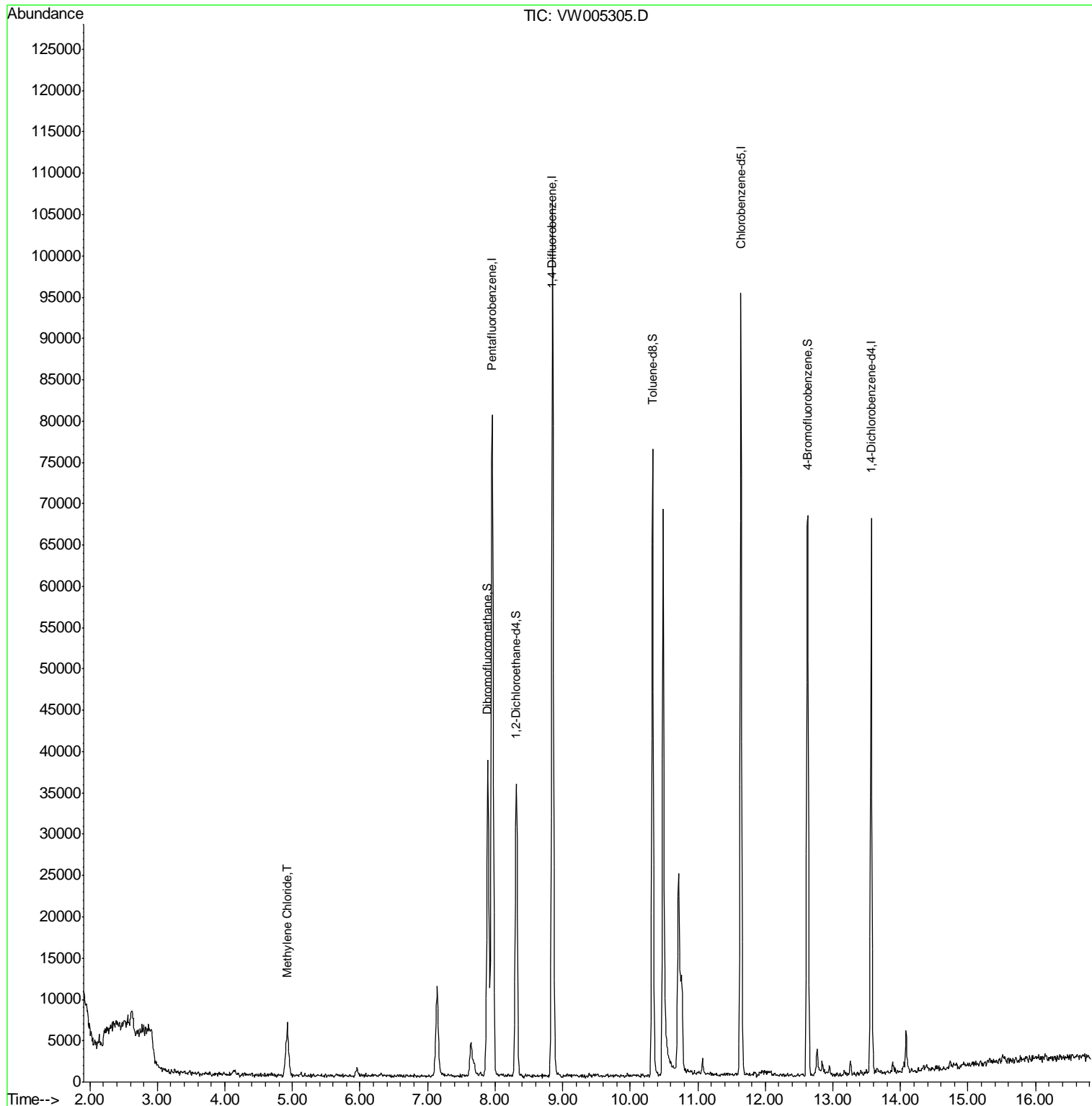
Internal Standards	R.T.	QIon	Response	Conc	Units	Dev(Min)
1) Pentafluorobenzene	7.96	168	65537	50.00	ug/l	0.00
34) 1,4-Difluorobenzene	8.85	114	94289	50.00	ug/l	0.00
63) Chlorobenzene-d5	11.63	117	58330	50.00	ug/l	0.00
72) 1,4-Dichlorobenzene-d4	13.57	152	19464	50.00	ug/l	0.00
System Monitoring Compounds						
33) 1,2-Dichloroethane-d4	8.32	65	28304	57.90	ug/l	0.00
Spiked Amount	50.000		Recovery	=	115.80%	
35) Dibromofluoromethane	7.89	113	26893	54.45	ug/l	0.00
Spiked Amount	50.000		Recovery	=	108.90%	
50) Toluene-d8	10.33	98	53131	21.29	ug/l	0.00
Spiked Amount	50.000		Recovery	=	42.58%	
62) 4-Bromofluorobenzene	12.63	95	19212	21.04	ug/l	0.00
Spiked Amount	50.000		Recovery	=	42.08%	
Target Compounds						Qvalue
20) Methylene Chloride	4.92	84	4582	3.75	ug/l	# 91

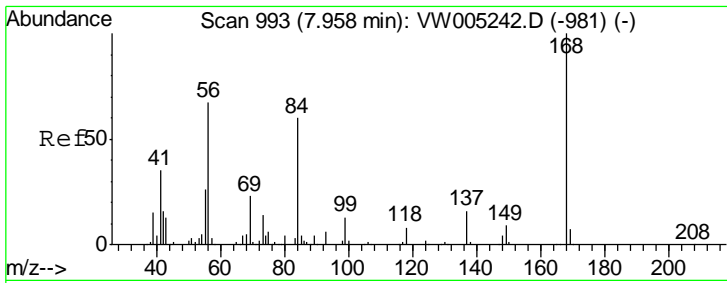
(#) = qualifier out of range (m) = manual integration (+) = signals summed

Data Path : Z:\VOASRV\HPCHEM1\MSVOA W\DATA\VW091118\
 Data File : VW005305.D
 Acq On : 12 Sep 2018 05:56
 Operator : SY/AP
 Sample : J4847-02
 Misc : 9.74G/5ML/MSVOA W/SOIL
 ALS Vial : 47 Sample Multiplier: 1

Instrument :
 MSVOA_W
 ClientSampleId :
 FK-PS-01-040

Quant Time: Sep 12 07:38:29 2018
 Quant Method : Z:\VOASRV\HPCHEM1\MSVOA_W\METHOD\82W091018S.M
 Quant Title : SW846 8260
 QLast Update : Tue Sep 11 03:48:23 2018
 Response via : Initial Calibration

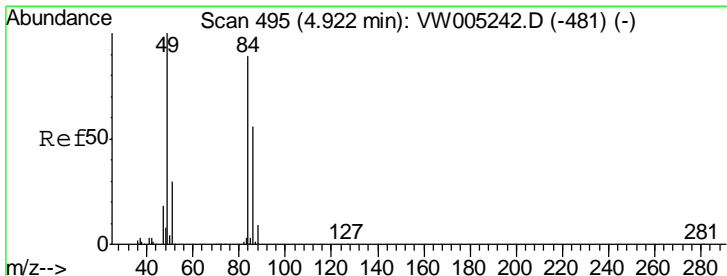
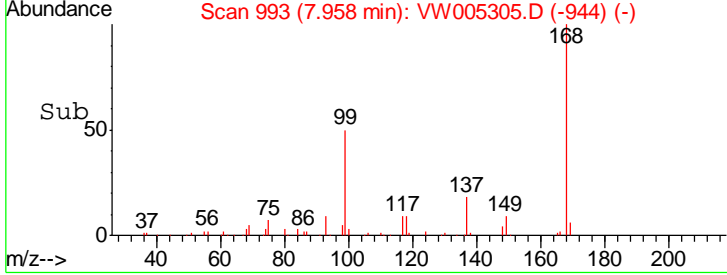
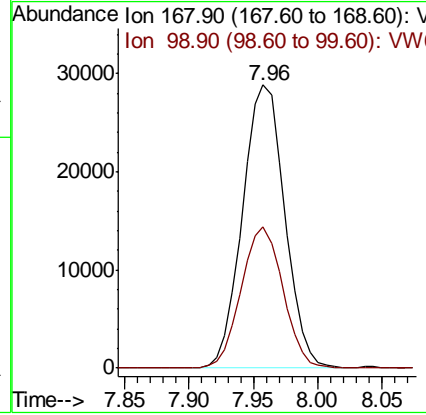
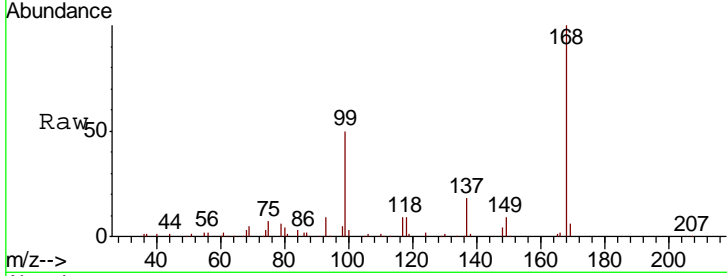




#1
 Pentafluorobenzene
 Concen: 50.00 ug/l
 RT: 7.96 min Scan# 993
 Delta R.T. 0.00 min
 Lab File: VW005305.D
 Acq: 12 Sep 2018 05:56

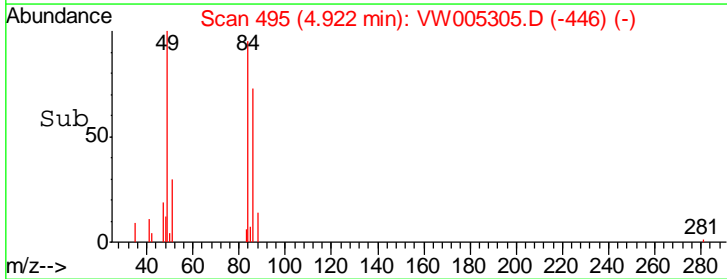
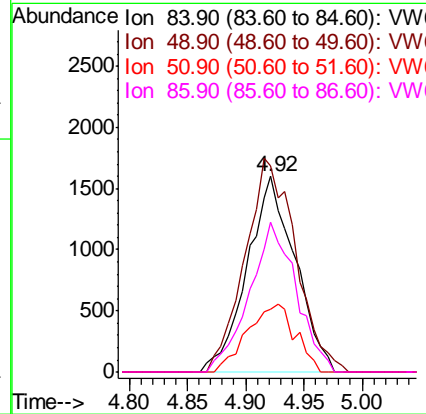
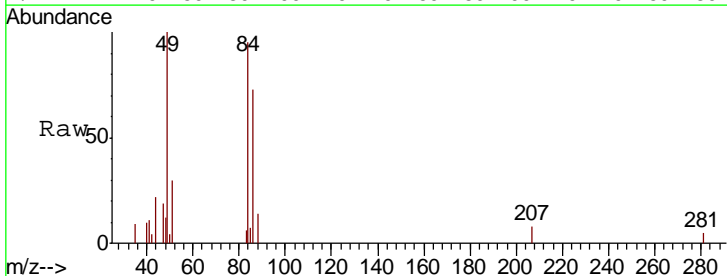
Instrument :
 MSVOA_W
 ClientSampled :
 FK-PS-01-040

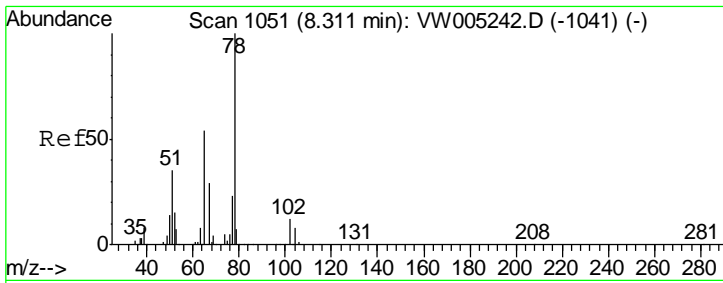
Tgt Ion	Resp	Lower	Upper
168	100		
99	49.7	39.1	58.7



#20
 Methylene Chloride
 Concen: 3.75 ug/l
 RT: 4.92 min Scan# 495
 Delta R.T. 0.00 min
 Lab File: VW005305.D
 Acq: 12 Sep 2018 05:56

Tgt Ion	Resp	Lower	Upper
84	100		
49	105.1	90.3	135.5
51	31.9	26.9	40.3
86	76.3	50.8	76.2#

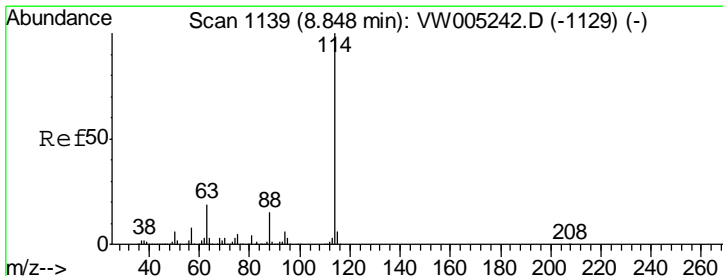
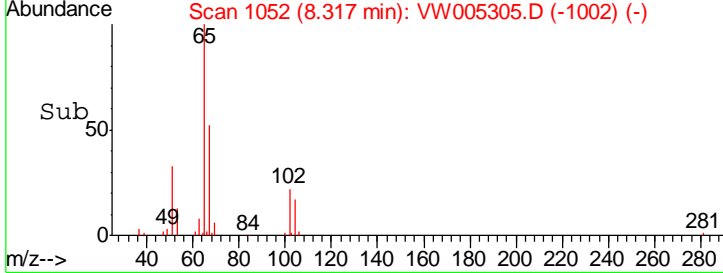
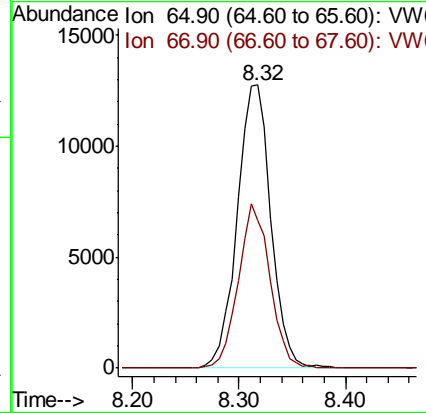
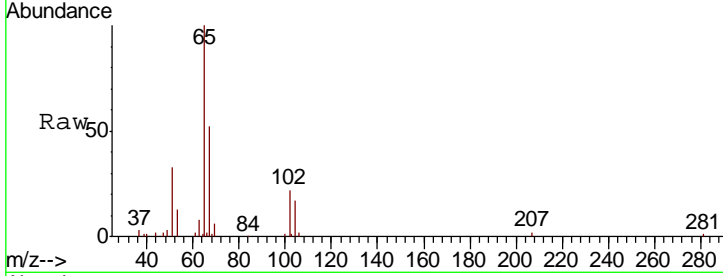




#33
 1,2-Dichloroethane-d4
 Concen: 57.90 ug/l
 RT: 8.32 min Scan# 1052
 Delta R.T. 0.01 min
 Lab File: VW005305.D
 Acq: 12 Sep 2018 05:56

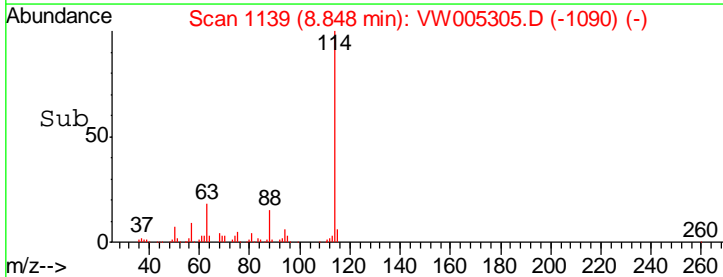
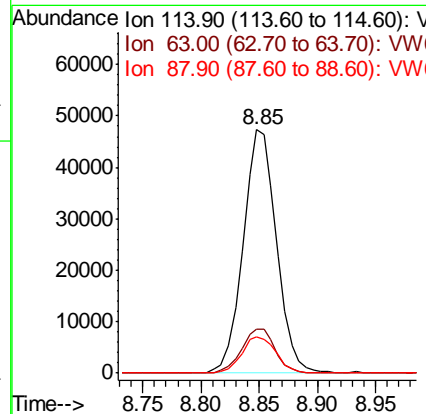
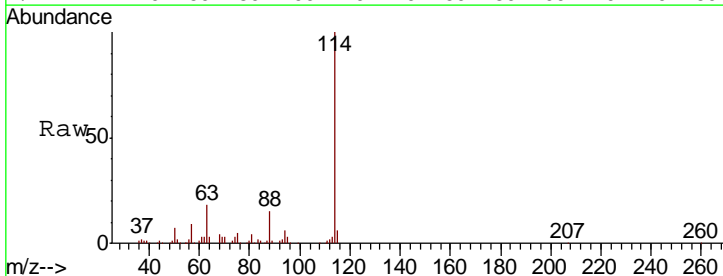
Instrument :
 MSVOA_W
ClientSampled :
 FK-PS-01-040

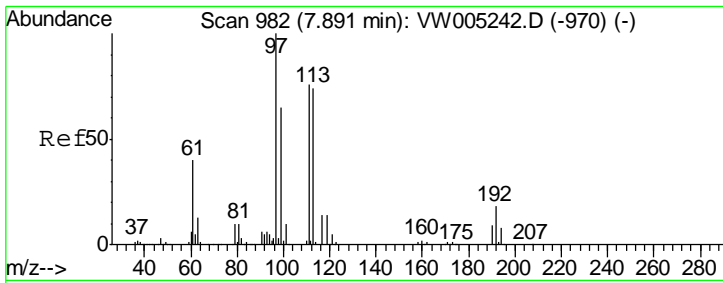
Tgt Ion	Resp	Lower	Upper
65	100		
67	54.7	0.0	112.2



#34
 1,4-Difluorobenzene
 Concen: 50.00 ug/l
 RT: 8.85 min Scan# 1139
 Delta R.T. 0.00 min
 Lab File: VW005305.D
 Acq: 12 Sep 2018 05:56

Tgt Ion	Resp	Lower	Upper
114	100		
63	18.2	0.0	37.0
88	14.8	0.0	30.4

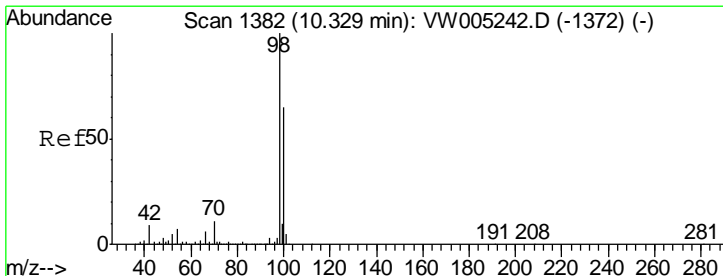
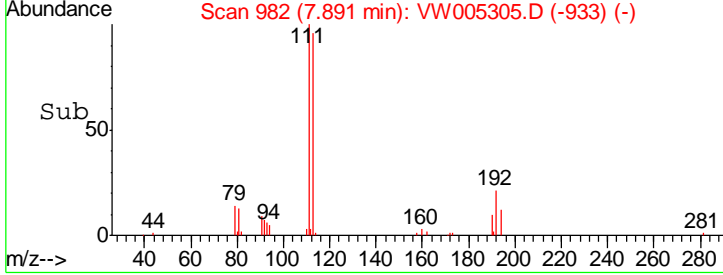
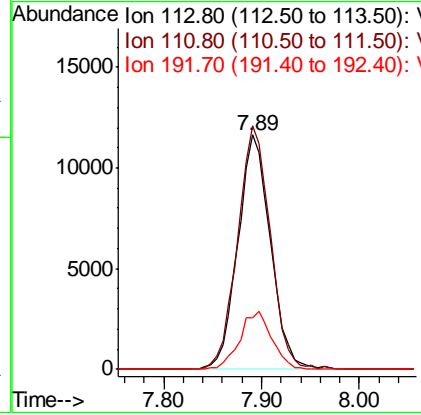
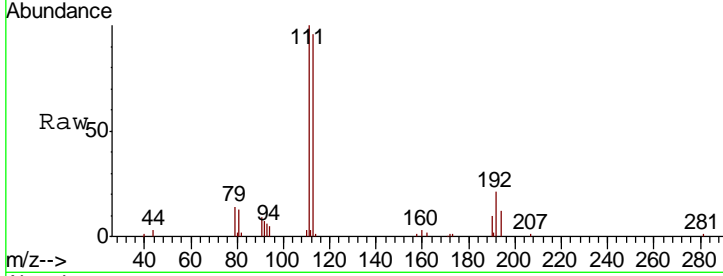




#35
 Dibromofluoromethane
 Concen: 54.45 ug/l
 RT: 7.89 min Scan# 982
 Delta R.T. 0.00 min
 Lab File: VW005305.D
 Acq: 12 Sep 2018 05:56

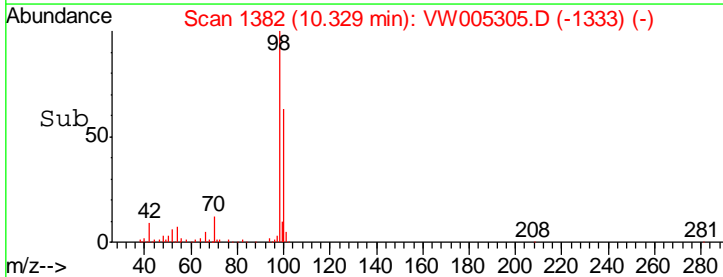
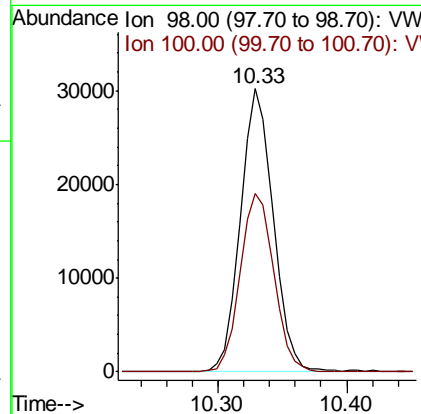
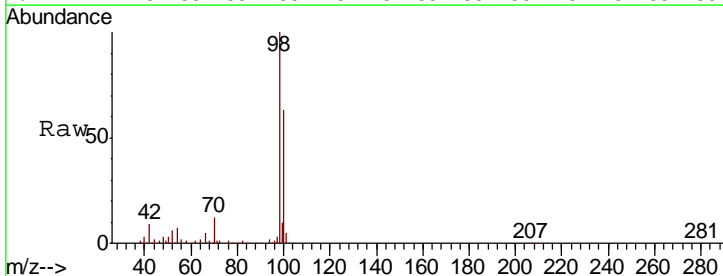
Instrument :
 MSVOA_W
ClientSampled :
 FK-PS-01-040

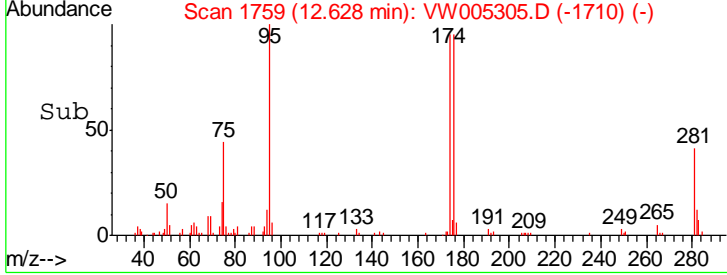
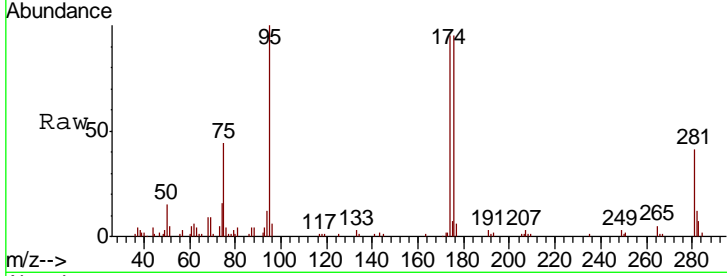
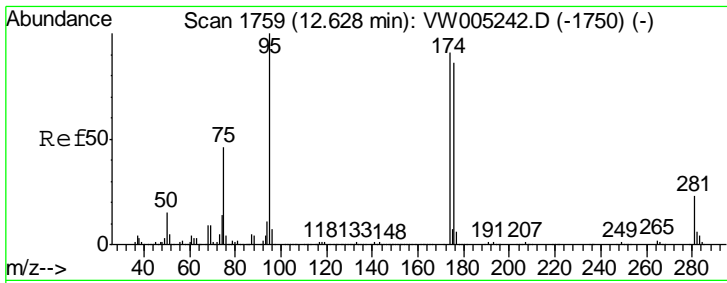
Tgt Ion	Resp	Lower	Upper
113	26893		
113	100		
111	104.0	80.6	121.0
192	24.4	18.3	27.5



#50
 Toluene-d8
 Concen: 21.29 ug/l
 RT: 10.33 min Scan# 1382
 Delta R.T. 0.00 min
 Lab File: VW005305.D
 Acq: 12 Sep 2018 05:56

Tgt Ion	Resp	Lower	Upper
98	53131		
98	100		
100	64.9	52.0	78.0

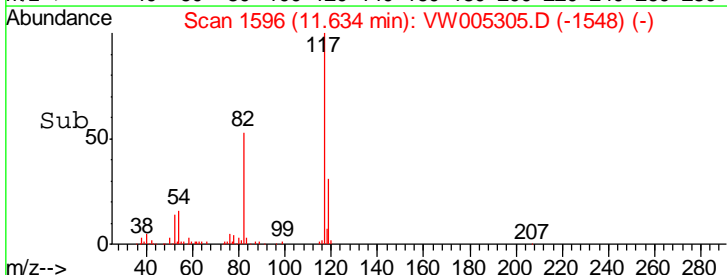
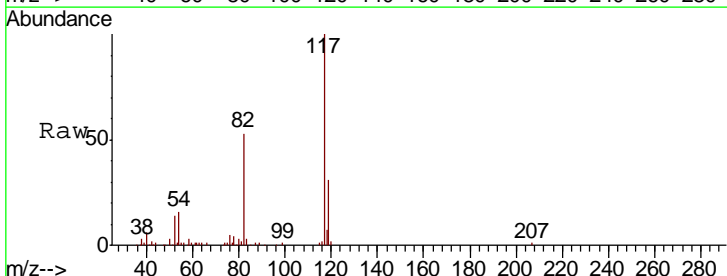
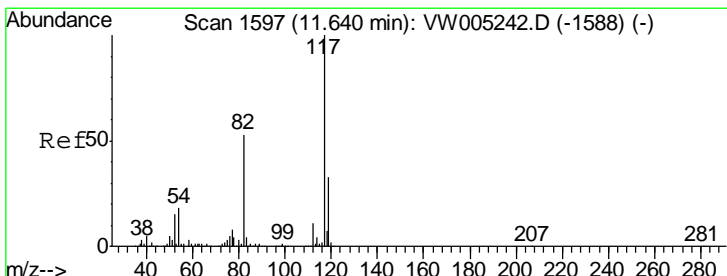
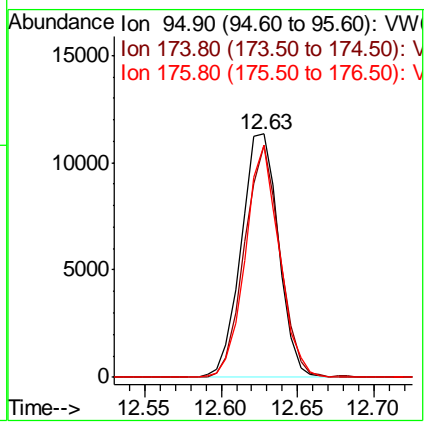




#62
 4-Bromofluorobenzene
 Concen: 21.04 ug/l
 RT: 12.63 min Scan# 1759
 Delta R.T. 0.00 min
 Lab File: VW005305.D
 Acq: 12 Sep 2018 05:56

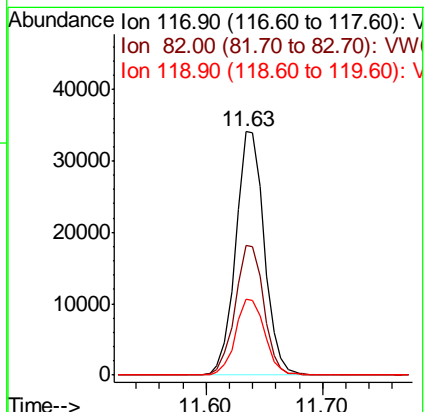
Instrument : MSVOA_W
 ClientSampleId : FK-PS-01-040

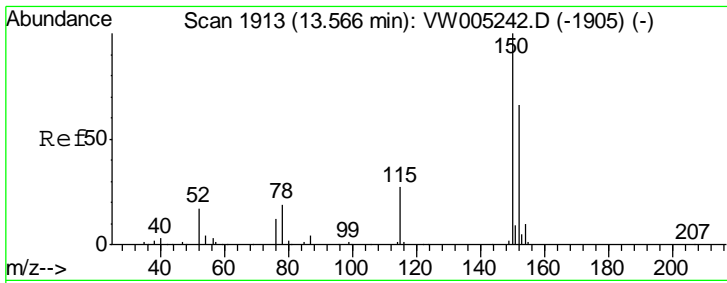
Tgt Ion	Resp	Lower	Upper
95	19212		
174	90.5	0.0	174.6
176	87.0	0.0	167.6



#63
 Chlorobenzene-d5
 Concen: 50.00 ug/l
 RT: 11.63 min Scan# 1596
 Delta R.T. -0.01 min
 Lab File: VW005305.D
 Acq: 12 Sep 2018 05:56

Tgt Ion	Resp	Lower	Upper
117	58330		
82	53.0	42.6	63.8
119	31.2	26.2	39.4



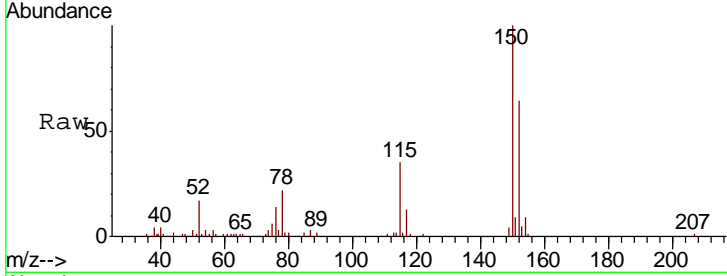


#72
 1,4-Dichlorobenzene-d4
 Concen: 50.00 ug/l
 RT: 13.57 min Scan# 1913
 Delta R.T. 0.00 min
 Lab File: VW005305.D
 Acq: 12 Sep 2018 05:56

Instrument :
 MSVOA_W
 ClientSampleId :
 FK-PS-01-040

Tot Ion:152 Resp: 19464

Ion	Ratio	Lower	Upper
152	100		
115	56.7	27.5	82.4
150	156.6	0.0	347.4



Abundance Ion 151.90 (151.60 to 152.60): V
 Ion 114.90 (114.60 to 115.60): V
 Ion 149.90 (149.60 to 150.60): V

