

Data Path : Z:\VOASRV\HPCHEM1\MSVOA_W\DATA\VW091119\
 Data File : VW012915.D
 Acq On : 11 Sep 2019 14:17
 Operator : SY/VA
 Sample : K4625-03
 Misc : 5.99G/5ML/MSVOA_W/SOIL
 ALS Vial : 11 Sample Multiplier: 1

Instrument :
 MSVOA_W
 ClientSampled :
 MM-01

Quant Time: Sep 12 07:51:40 2019
 Quant Method : Z:\VOASRV\HPCHEM1\MSVOA_W\METHOD\82W090719S.M
 Quant Title : SW846 8260
 QLast Update : Sun Sep 08 05:04:40 2019
 Response via : Initial Calibration

Internal Standards	R.T.	QIon	Response	Conc	Units	Dev(Min)
1) Pentafluorobenzene	7.95	168	229481	50.00	ug/l	0.00
34) 1,4-Difluorobenzene	8.84	114	344784	50.00	ug/l	0.00
63) Chlorobenzene-d5	11.63	117	274356	50.00	ug/l	0.00
72) 1,4-Dichlorobenzene-d4	13.55	152	107669	50.00	ug/l	0.00

System Monitoring Compounds

33) 1,2-Dichloroethane-d4	8.31	65	125052	48.77	ug/l	0.00
Spiked Amount	50.000		Recovery	=	97.54%	
35) Dibromofluoromethane	7.88	113	101085	49.31	ug/l	0.00
Spiked Amount	50.000		Recovery	=	98.62%	
50) Toluene-d8	10.32	98	399900	49.80	ug/l	0.00
Spiked Amount	50.000		Recovery	=	99.60%	
62) 4-Bromofluorobenzene	12.62	95	119414	40.96	ug/l	0.00
Spiked Amount	50.000		Recovery	=	81.92%	

Target Compounds

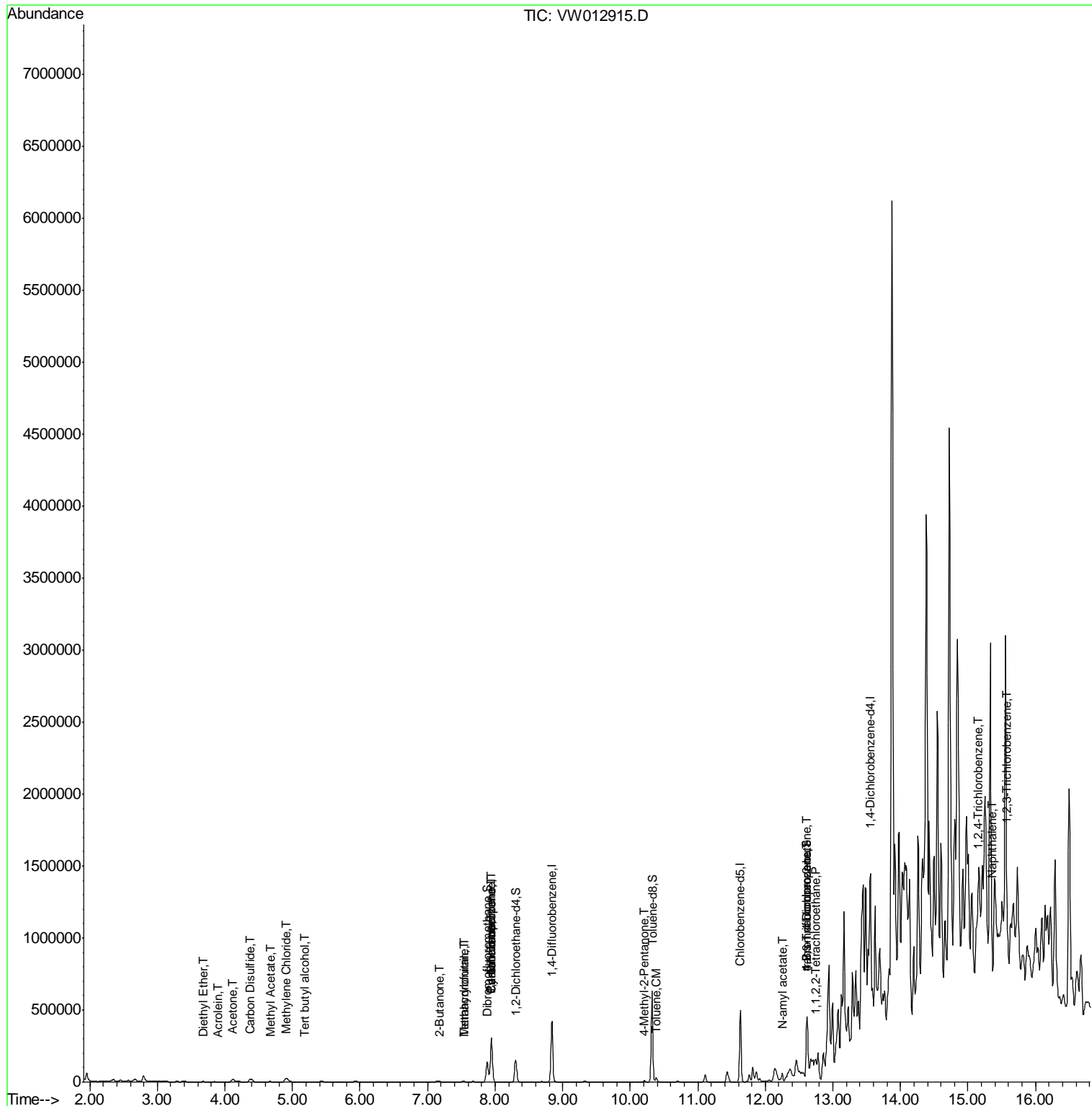
						Qvalue
8) Diethyl Ether	3.68	74	2601	2.419	ug/l	79
11) Tert butyl alcohol	5.18	59	5337	27.205	ug/l #	88
13) Acrolein	3.90	56	407	1.955	ug/l #	14
16) Acetone	4.12	43	38675	55.328	ug/l	99
17) Carbon Disulfide	4.37	76	44264	11.004	ug/l	100
18) Methyl Acetate	4.68	43	8184	4.990	ug/l #	57
20) Methylene Chloride	4.91	84	20692	9.462	ug/l	95
25) 2-Butanone	7.18	43	4520	23.726	ug/l #	72
29) Tetrahydrofuran	7.53	42	4086	7.238	ug/l #	84
31) Cyclohexane	7.94	56	5674	1.505	ug/l #	7
36) 1,1-Dichloropropene	7.95	75	17504	5.714	ug/l #	52
38) Carbon Tetrachloride	7.95	117	22371	7.408	ug/l #	17
41) Methacrylonitrile	7.54	41	3157	6.034	ug/l #	54
51) 4-Methyl-2-Pentanone	10.21	43	6679	3.440	ug/l	99
52) Toluene	10.38	92	13305	2.508	ug/l	95
74) N-amyl acetate	12.25	43	12096	4.935	ug/l #	62
75) 1,1,2,2-Tetrachloroethane	12.74	83	3202	2.065	ug/l #	1
76) 1,2,3-Trichloropropane	12.62	75	63076	57.292	ug/l #	100
81) trans-1,4-Dichloro-2-buten	12.62	75	63076	121.176	ug/l #	9
93) 1,2,4-Trichlorobenzene	15.14	180	4625	2.146	ug/l #	1
95) Naphthalene	15.36	128	1438	4.729	ug/l #	79
96) 1,2,3-Trichlorobenzene	15.58	180	8771	4.611	ug/l #	48

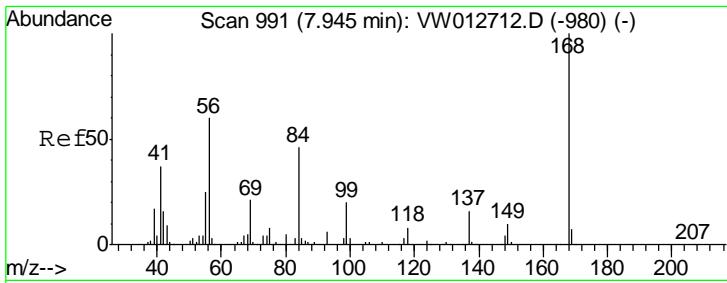
(#) = qualifier out of range (m) = manual integration (+) = signals summed

Data Path : Z:\VOASRV\HPCHEM1\MSVOA_W\DATA\VW091119\
 Data File : VW012915.D
 Acq On : 11 Sep 2019 14:17
 Operator : SY/VA
 Sample : K4625-03
 Misc : 5.99G/5ML/MSVOA_W/SOIL
 ALS Vial : 11 Sample Multiplier: 1

Instrument :
 MSVOA_W
 Client Sampled :
 MM-01

Quant Time: Sep 12 07:51:40 2019
 Quant Method : Z:\VOASRV\HPCHEM1\MSVOA_W\METHOD\82W090719S.M
 Quant Title : SW846 8260
 QLast Update : Sun Sep 08 05:04:40 2019
 Response via : Initial Calibration

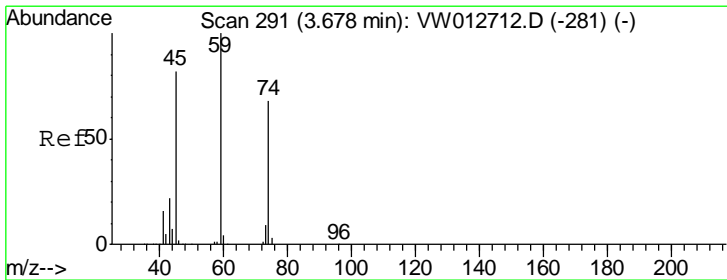
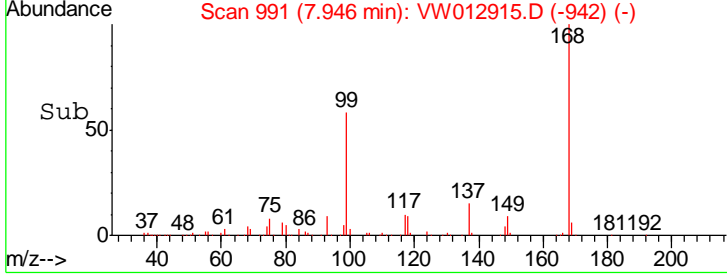
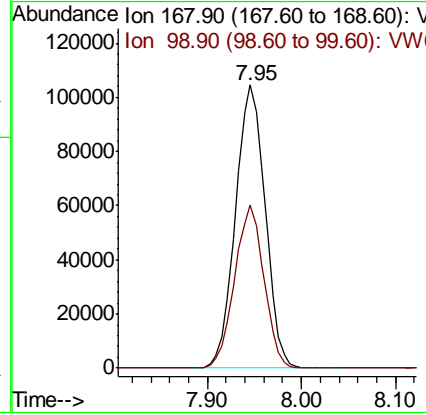
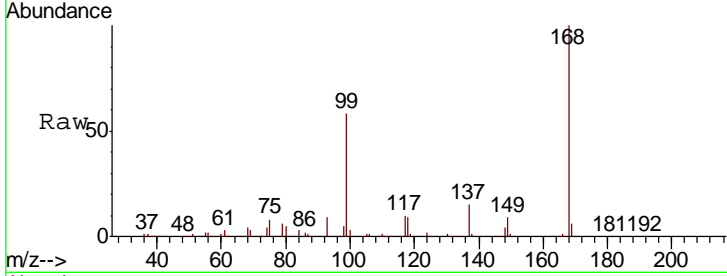




#1
 Pentafluorobenzene
 Concen: 50.000 ug/l
 RT: 7.95 min Scan# 991
 Delta R.T. 0.00 min
 Lab File: VW012915.D
 Acq: 11 Sep 2019 14:17

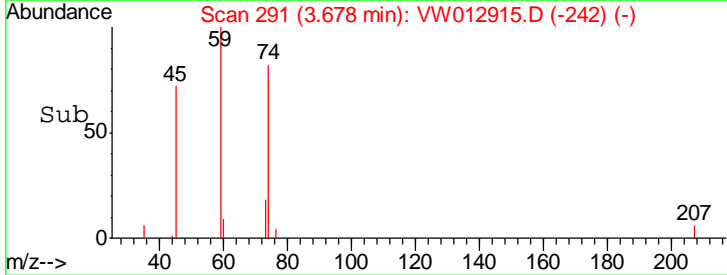
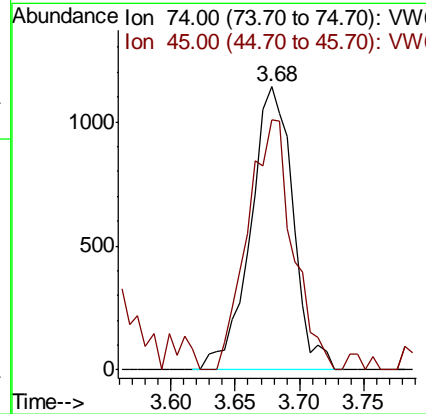
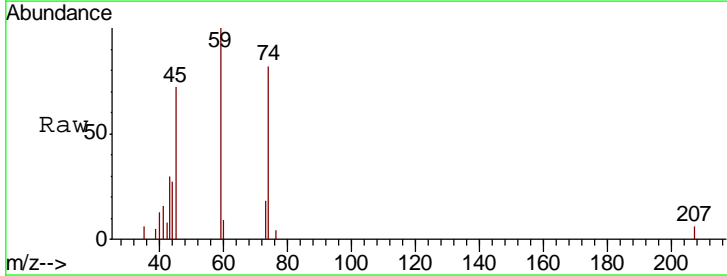
Instrument :
 MSVOA_W
ClientSampled :
 MM-01

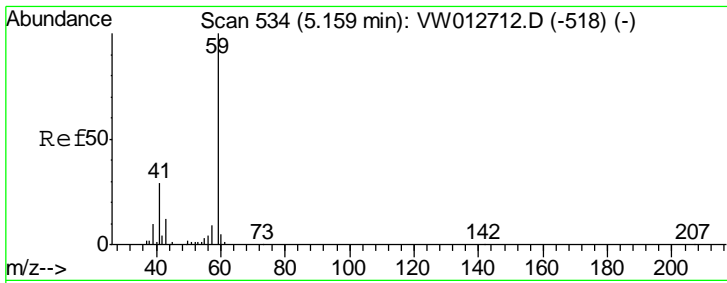
Tgt Ion: 168 Resp: 229481
 Ion Ratio Lower Upper
 168 100
 99 57.7 47.8 71.6



#8
 Diethyl Ether
 Concen: 2.419 ug/l
 RT: 3.68 min Scan# 291
 Delta R.T. 0.00 min
 Lab File: VW012915.D
 Acq: 11 Sep 2019 14:17

Tgt Ion: 74 Resp: 2601
 Ion Ratio Lower Upper
 74 100
 45 94.5 58.8 176.4

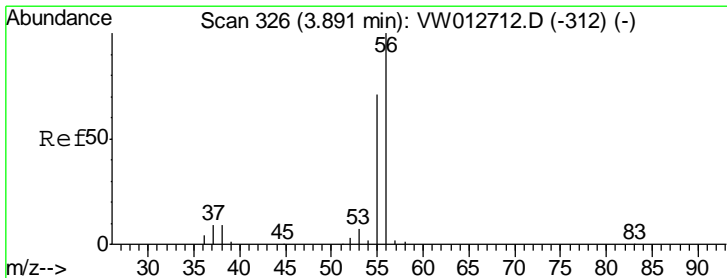
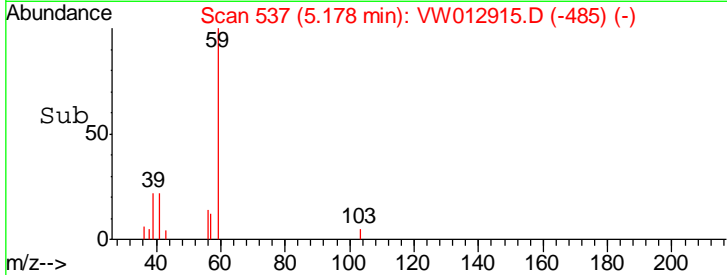
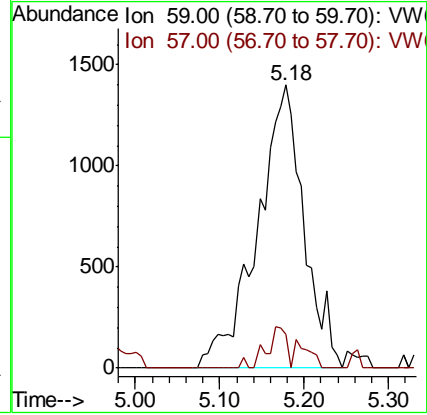
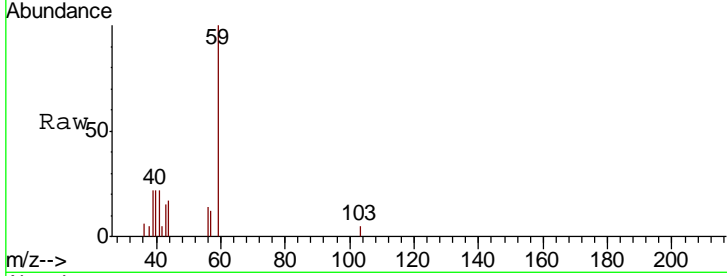




#11
 Tert butyl alcohol
 Concen: 27.205 ug/l
 RT: 5.18 min Scan# 537
 Delta R.T. 0.02 min
 Lab File: VW012915.D
 Acq: 11 Sep 2019 14:17

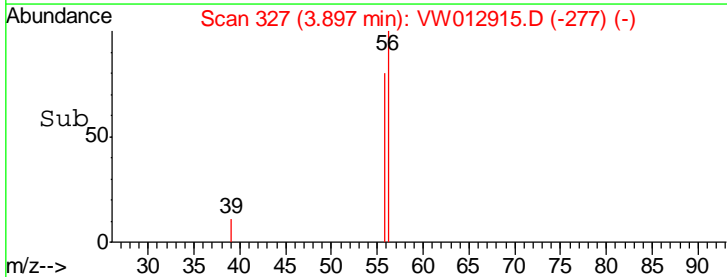
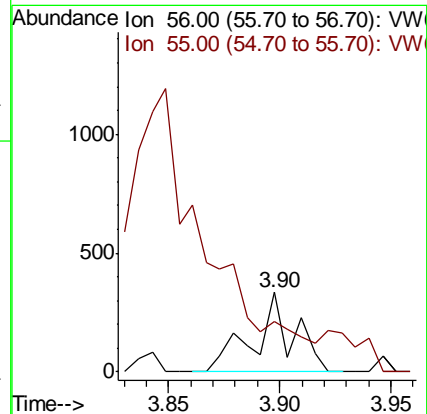
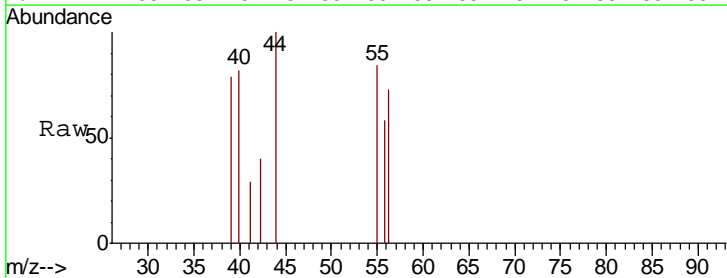
Instrument :
 MSVOA_W
 ClientSampled :
 MM-01

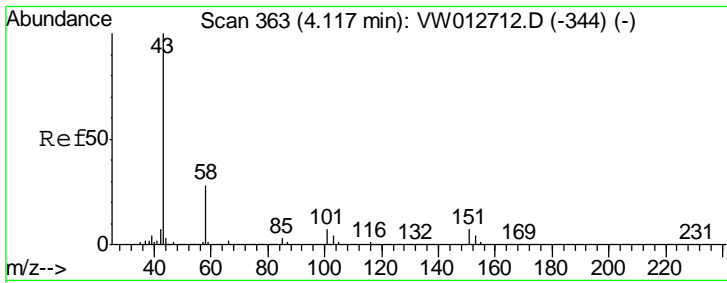
Tgt Ion: 59 Resp: 5337
 Ion Ratio Lower Upper
 59 100
 57 5.7 8.2 12.4#



#13
 Acrolein
 Concen: 1.955 ug/l
 RT: 3.90 min Scan# 327
 Delta R.T. 0.01 min
 Lab File: VW012915.D
 Acq: 11 Sep 2019 14:17

Tgt Ion: 56 Resp: 407
 Ion Ratio Lower Upper
 56 100
 55 0.0 56.9 85.3#

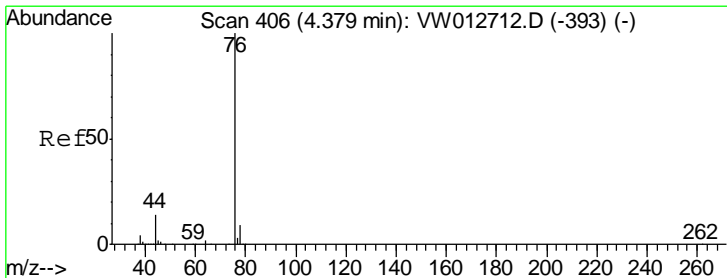
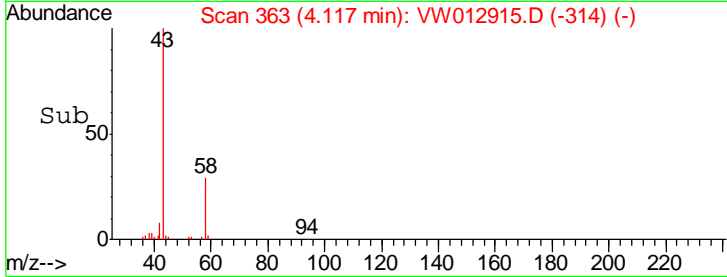
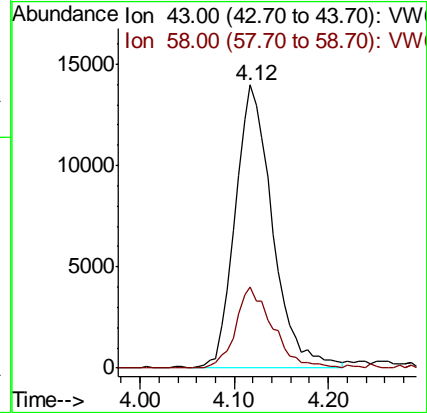
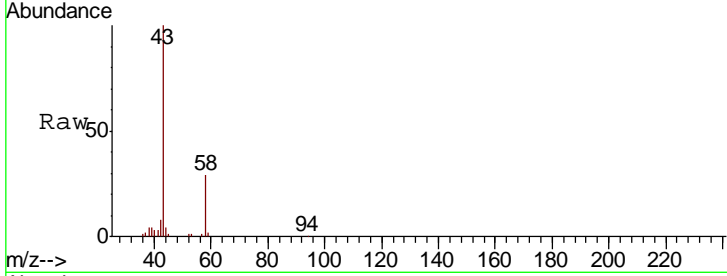




#16
 Acetone
 Concen: 55.328 ug/l
 RT: 4.12 min Scan# 363
 Delta R.T. 0.00 min
 Lab File: VW012915.D
 Acq: 11 Sep 2019 14:17

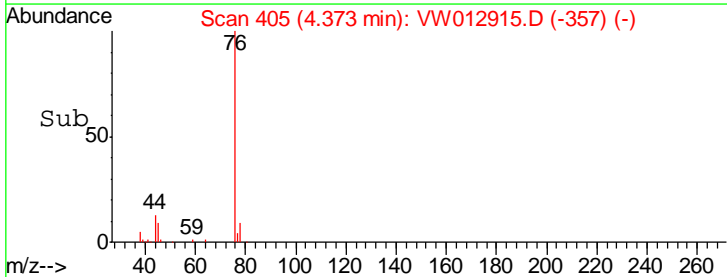
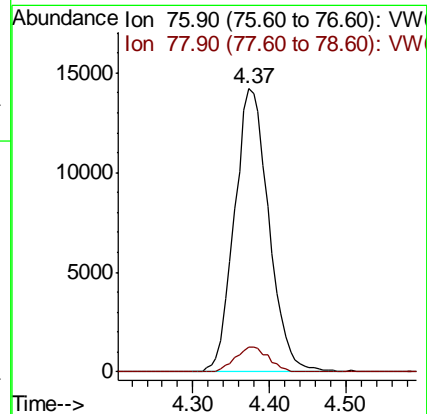
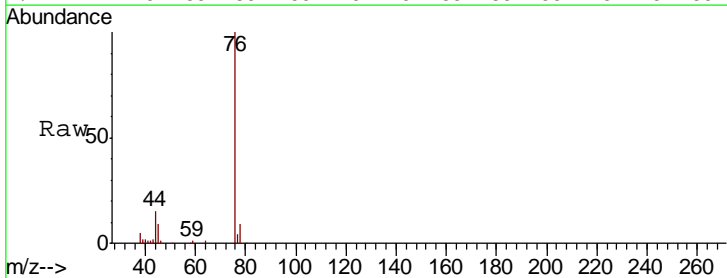
Instrument :
 MSVOA_W
 ClientSampled :
 MM-01

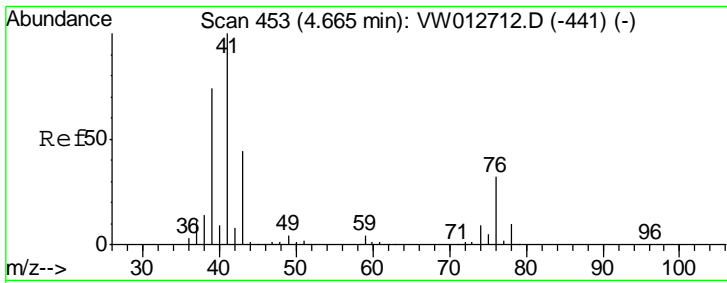
Tgt Ion: 43 Resp: 38675
 Ion Ratio Lower Upper
 43 100
 58 28.7 22.6 33.8



#17
 Carbon Disulfide
 Concen: 11.004 ug/l
 RT: 4.37 min Scan# 405
 Delta R.T. -0.01 min
 Lab File: VW012915.D
 Acq: 11 Sep 2019 14:17

Tgt Ion: 76 Resp: 44264
 Ion Ratio Lower Upper
 76 100
 78 9.0 7.2 10.8

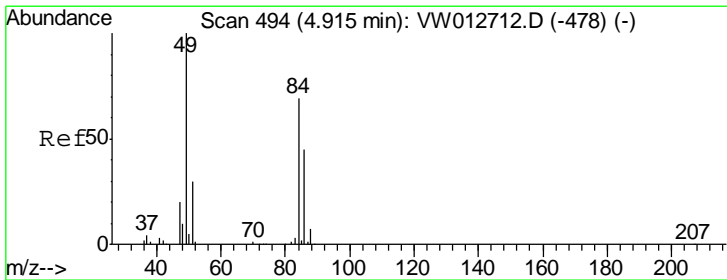
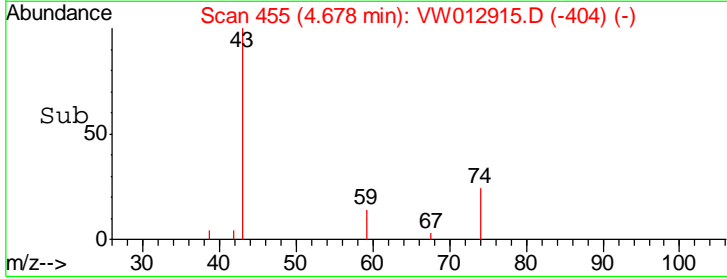
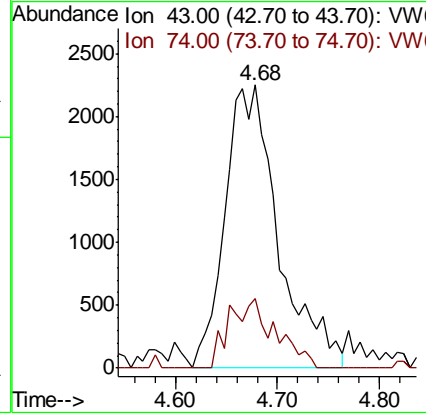
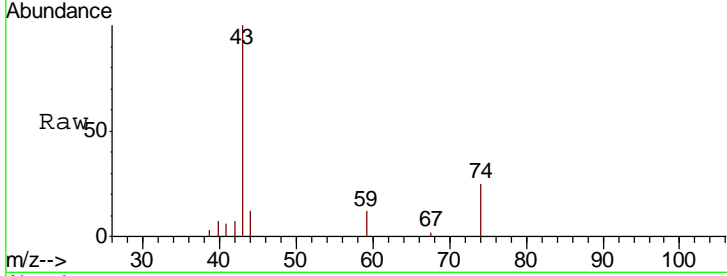




#18
 Methyl Acetate
 Concen: 4.990 ug/l
 RT: 4.68 min Scan# 455
 Delta R.T. 0.01 min
 Lab File: VW012915.D
 Acq: 11 Sep 2019 14:17

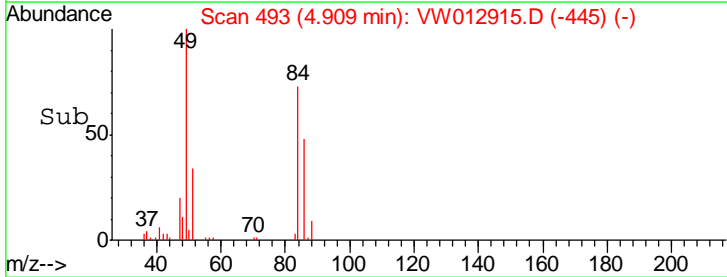
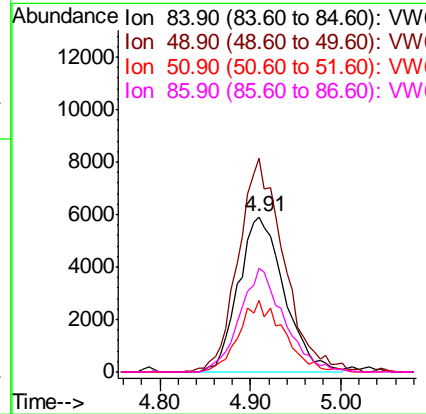
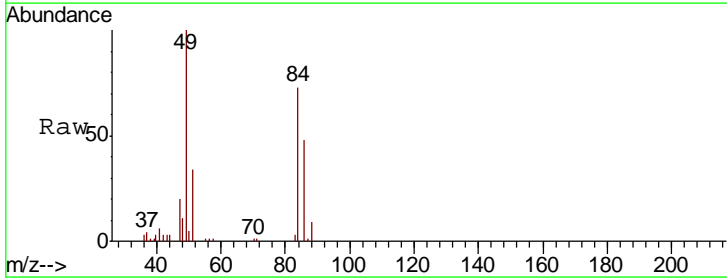
Instrument : MSVOA_W
 ClientSampled : MM-01

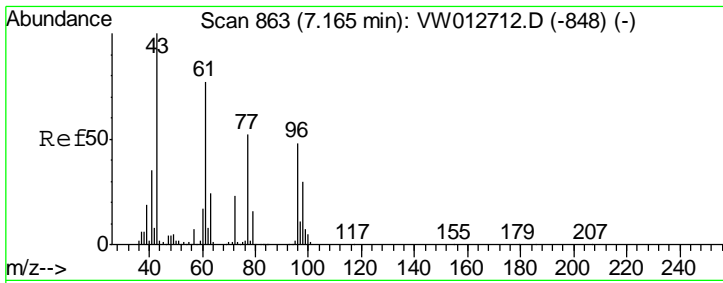
Tgt Ion: 43 Resp: 8184
 Ion Ratio Lower Upper
 43 100
 74 0.0 15.8 23.6#



#20
 Methylene Chloride
 Concen: 9.462 ug/l
 RT: 4.91 min Scan# 493
 Delta R.T. -0.01 min
 Lab File: VW012915.D
 Acq: 11 Sep 2019 14:17

Tgt Ion: 84 Resp: 20692
 Ion Ratio Lower Upper
 84 100
 49 136.1 115.4 173.0
 51 46.1 34.9 52.3
 86 66.3 52.2 78.4

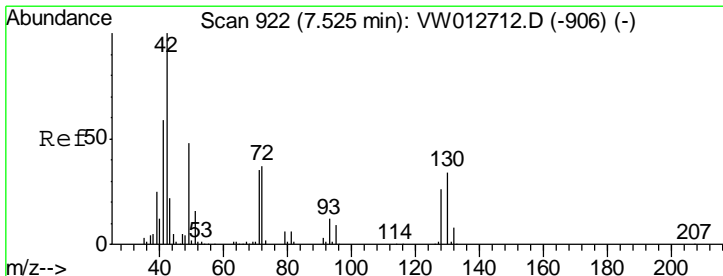
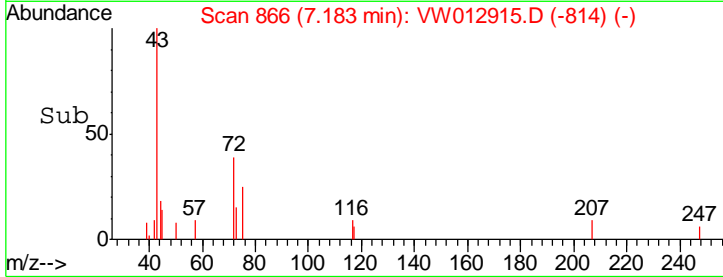
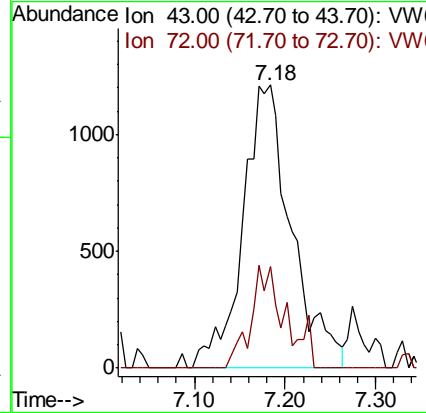
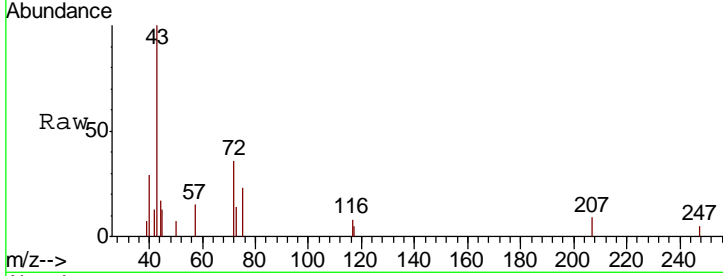




#25
 2-Butanone
 Concen: 23.726 ug/l
 RT: 7.18 min Scan# 866
 Delta R.T. 0.02 min
 Lab File: VW012915.D
 Acq: 11 Sep 2019 14:17

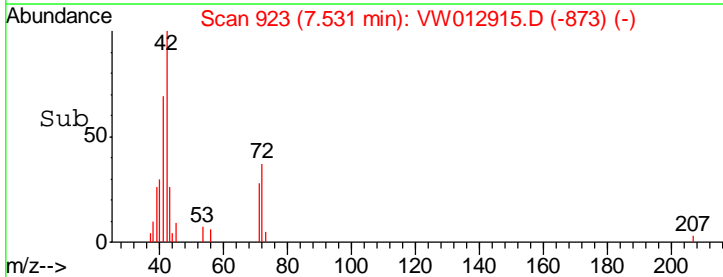
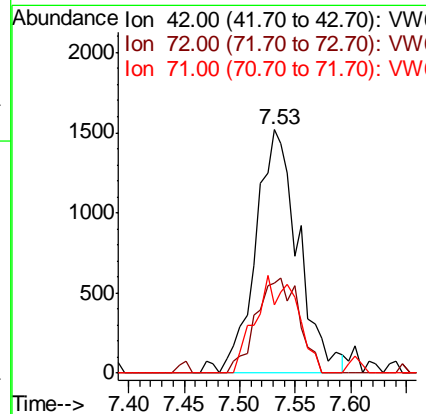
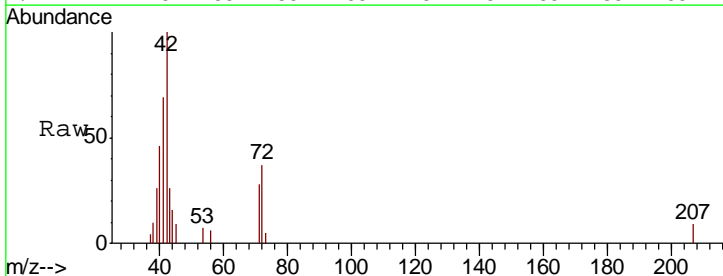
Instrument :
 MSVOA_W
 ClientSampled :
 MM-01

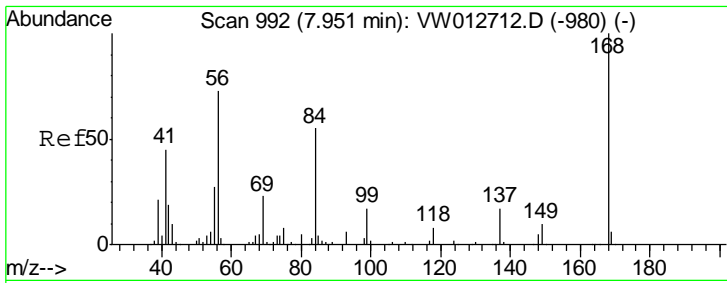
Tgt Ion: 43 Resp: 4520
 Ion Ratio Lower Upper
 43 100
 72 36.0 18.0 27.0#



#29
 Tetrahydrofuran
 Concen: 7.238 ug/l
 RT: 7.53 min Scan# 923
 Delta R.T. 0.01 min
 Lab File: VW012915.D
 Acq: 11 Sep 2019 14:17

Tgt Ion: 42 Resp: 4086
 Ion Ratio Lower Upper
 42 100
 72 38.7 28.4 42.6
 71 19.0 27.1 40.7#

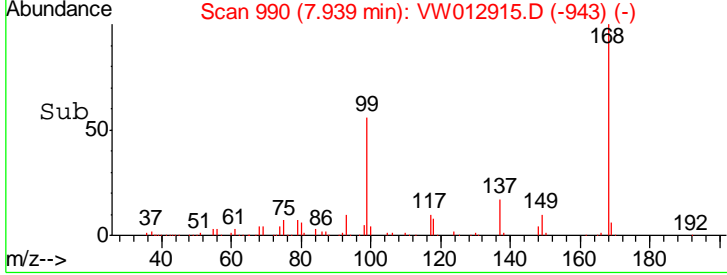
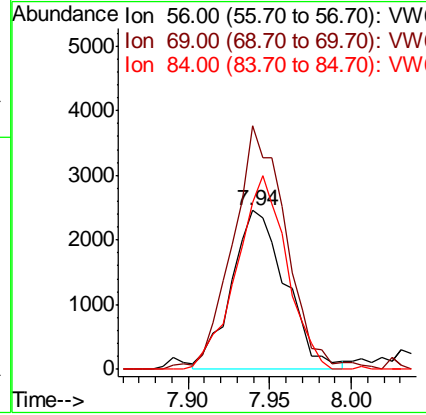
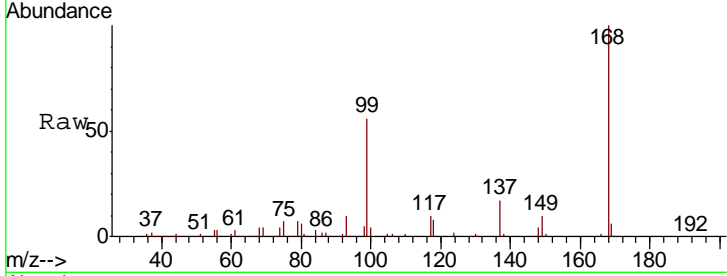




#31
 Cyclohexane
 Concen: 1.505 ug/l
 RT: 7.94 min Scan# 990
 Delta R.T. -0.01 min
 Lab File: VW012915.D
 Acq: 11 Sep 2019 14:17

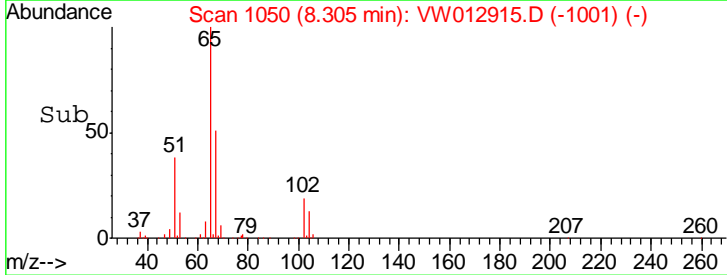
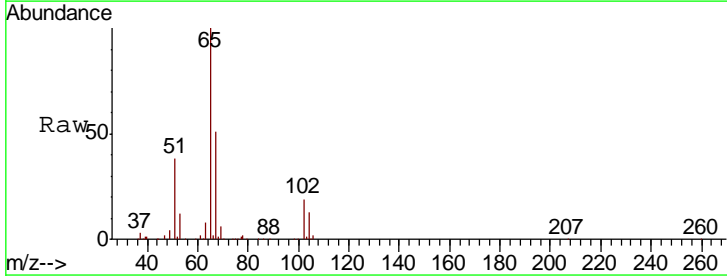
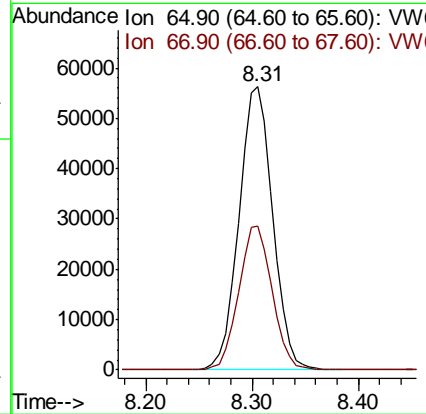
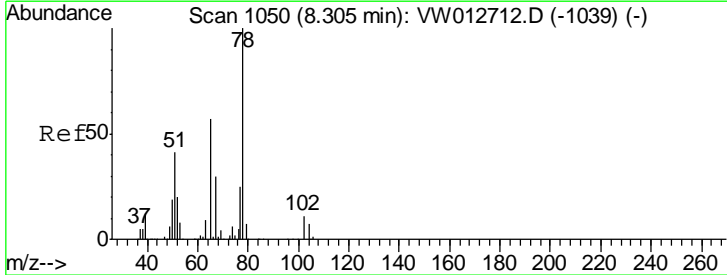
Instrument :
 MSVOA_W
 ClientSampled :
 MM-01

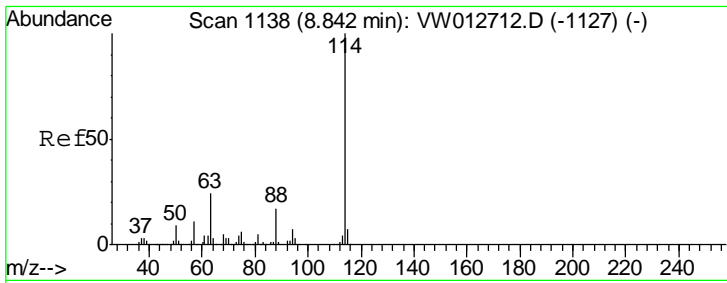
Tgt Ion	Resp	Lower	Upper
56	5674		
69	156.0	25.7	38.5#
84	108.7	60.4	90.6#



#33
 1,2-Dichloroethane-d4
 Concen: 48.771 ug/l
 RT: 8.31 min Scan# 1050
 Delta R.T. 0.00 min
 Lab File: VW012915.D
 Acq: 11 Sep 2019 14:17

Tgt Ion	Resp	Lower	Upper
65	125052		
67	50.8	0.0	101.8

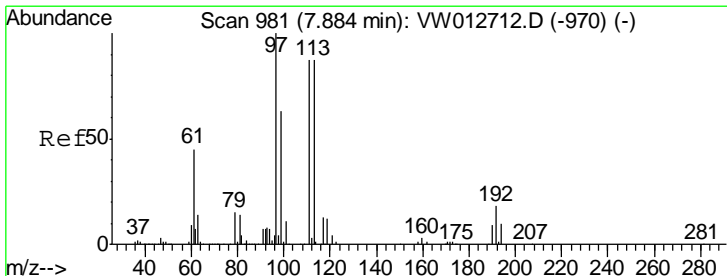
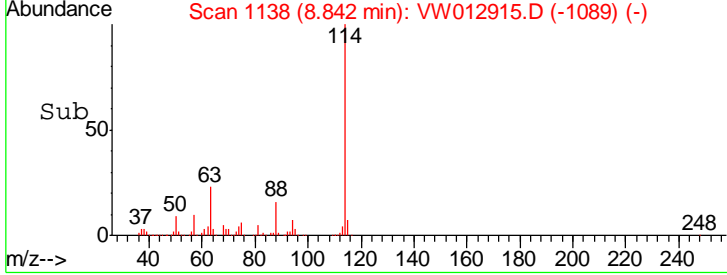
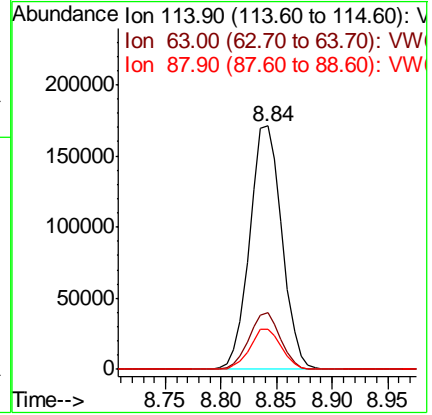
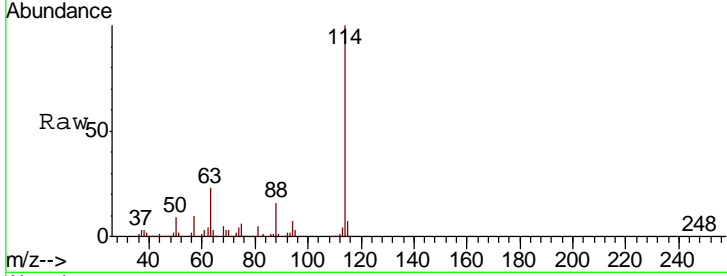




#34
 1,4-Difluorobenzene
 Concen: 50.000 ug/l
 RT: 8.84 min Scan# 1138
 Delta R.T. 0.00 min
 Lab File: VW012915.D
 Acq: 11 Sep 2019 14:17

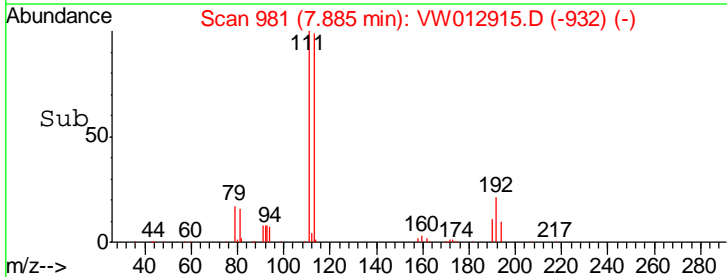
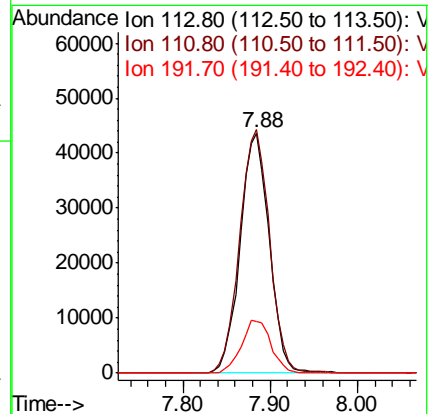
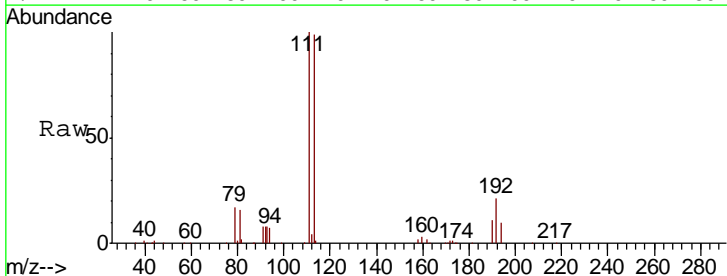
Instrument : MSVOA_W
 ClientSampled : MM-01

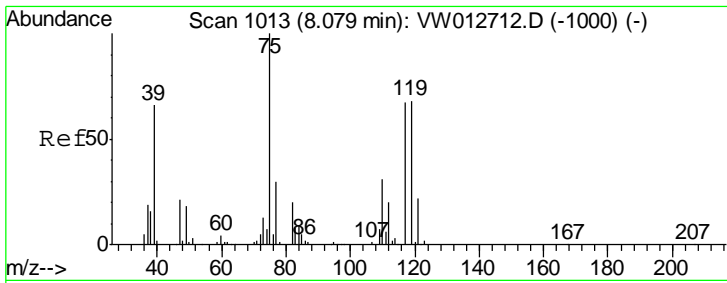
Tgt Ion	Resp	Lower	Upper
114	100		
63	23.4	0.0	47.2
88	16.3	0.0	34.0



#35
 Dibromofluoromethane
 Concen: 49.314 ug/l
 RT: 7.88 min Scan# 981
 Delta R.T. 0.00 min
 Lab File: VW012915.D
 Acq: 11 Sep 2019 14:17

Tgt Ion	Resp	Lower	Upper
113	100		
111	103.9	80.2	120.4
192	22.3	17.3	25.9

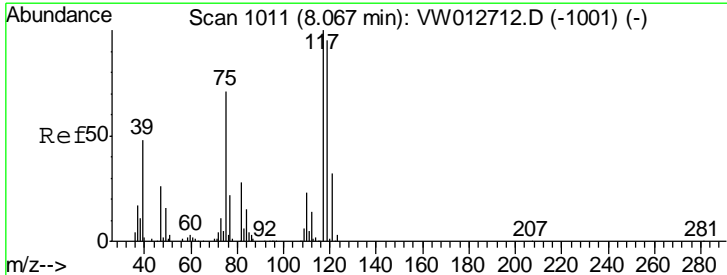
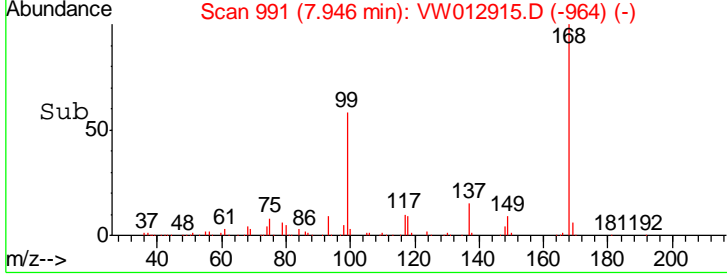
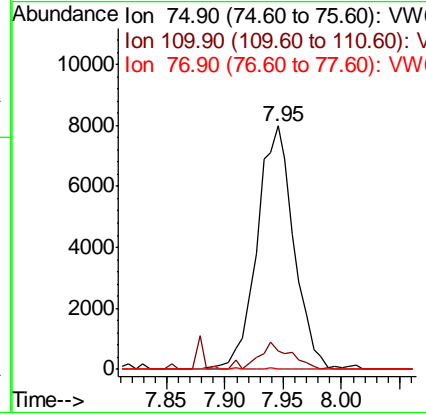
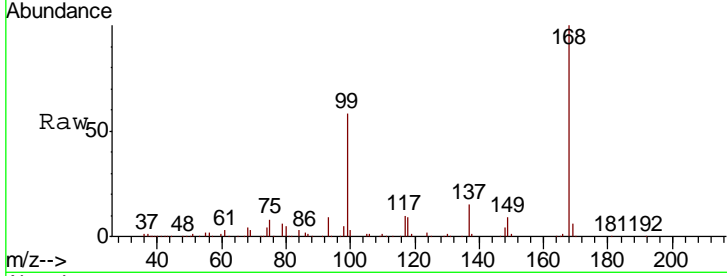




#36
 1,1-Dichloropropene
 Concen: 5.714 ug/l
 RT: 7.95 min Scan# 991
 Delta R.T. -0.13 min
 Lab File: VW012915.D
 Acq: 11 Sep 2019 14:17

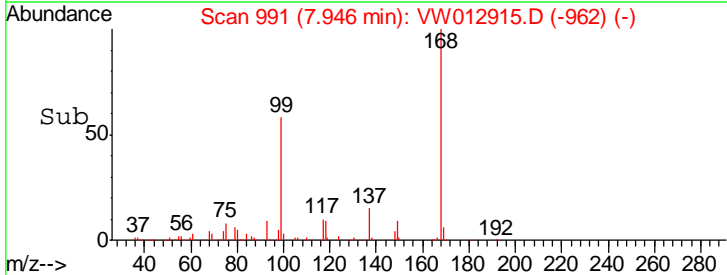
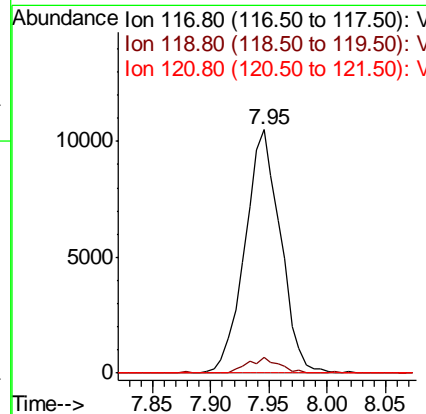
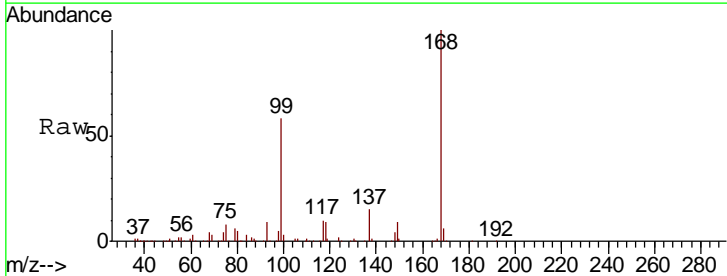
Instrument : MSVOA_W
 ClientSampled : MM-01

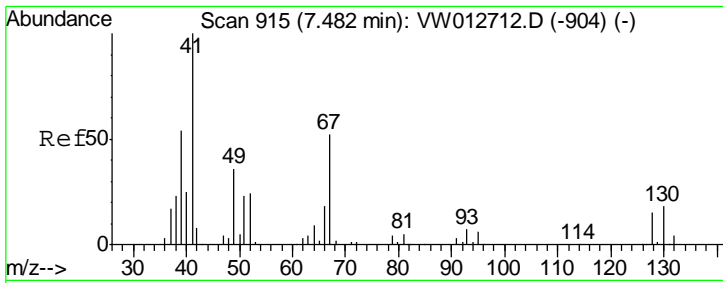
Tgt Ion	Resp	Lower	Upper
75	17504		
110	9.9	15.9	47.7#
77	0.0	25.0	37.4#



#38
 Carbon Tetrachloride
 Concen: 7.408 ug/l
 RT: 7.95 min Scan# 991
 Delta R.T. -0.12 min
 Lab File: VW012915.D
 Acq: 11 Sep 2019 14:17

Tgt Ion	Resp	Lower	Upper
117	22371		
119	6.5	76.2	114.2#
121	0.0	25.4	38.2#

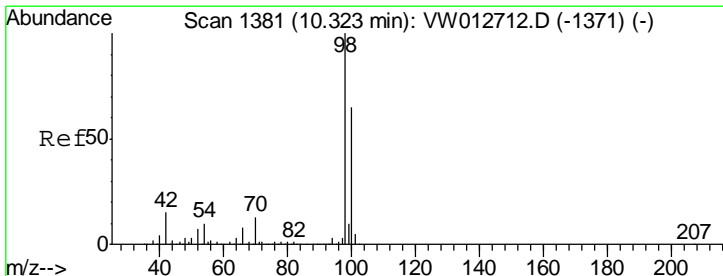
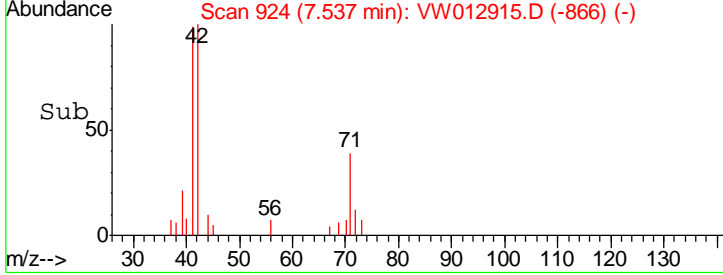
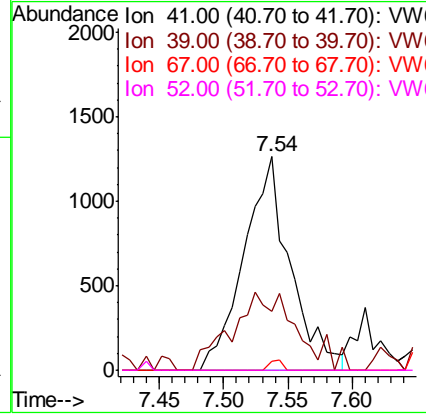
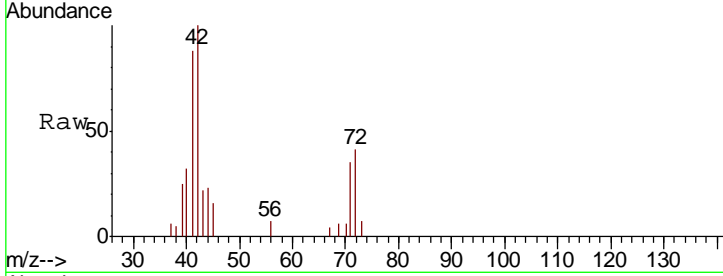




#41
 Methacrylonitrile
 Concen: 6.034 ug/l
 RT: 7.54 min Scan# 924
 Delta R.T. 0.06 min
 Lab File: VW012915.D
 Acq: 11 Sep 2019 14:17

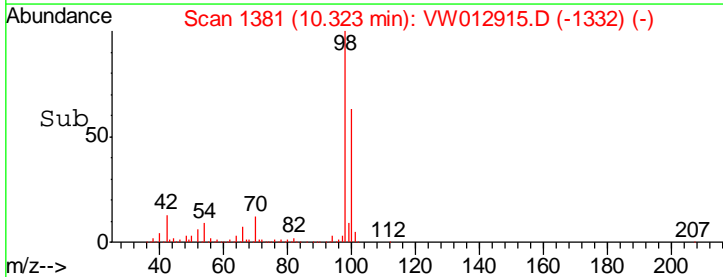
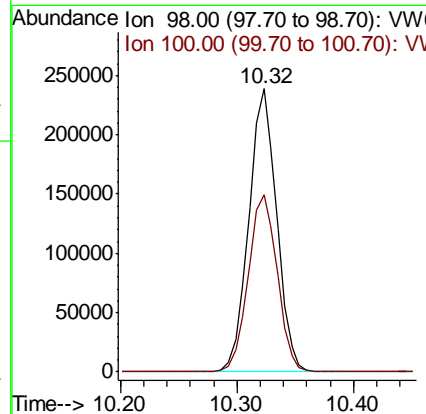
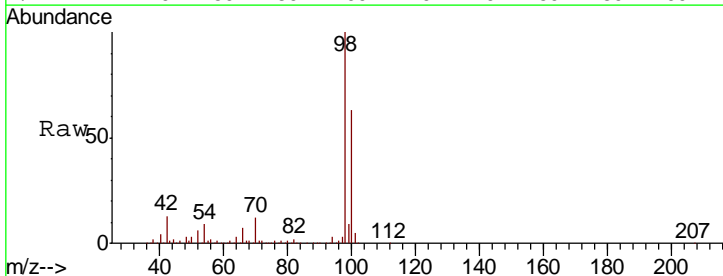
Instrument :
 MSVOA_W
 ClientSampled :
 MM-01

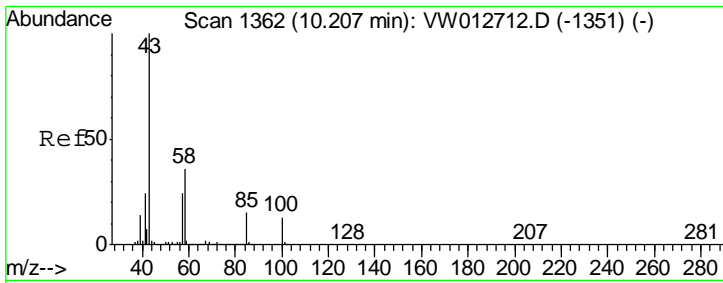
Tgt Ion	Resp	Lower	Upper
41	100		
39	47.4	47.5	71.3#
67	1.3	45.1	67.7#
52	0.0	20.2	30.2#



#50
 Toluene-d8
 Concen: 49.796 ug/l
 RT: 10.32 min Scan# 1381
 Delta R.T. 0.00 min
 Lab File: VW012915.D
 Acq: 11 Sep 2019 14:17

Tgt Ion	Resp	Lower	Upper
98	100		
100	64.9	52.2	78.4

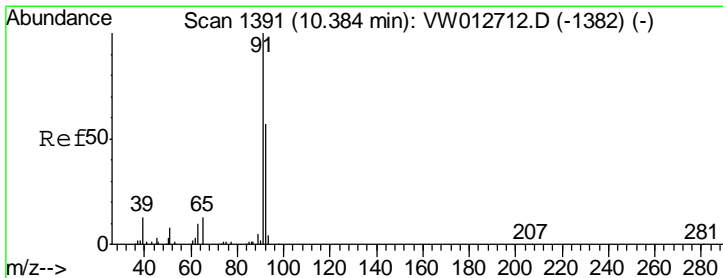
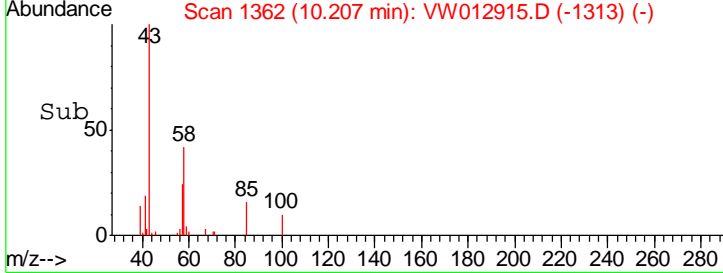
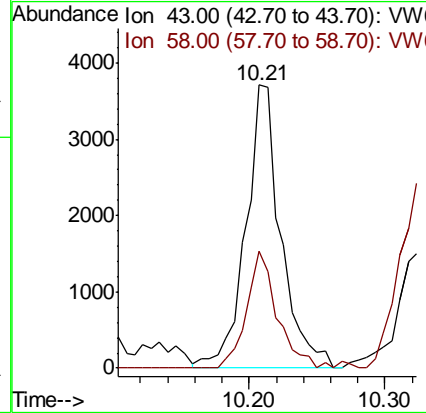
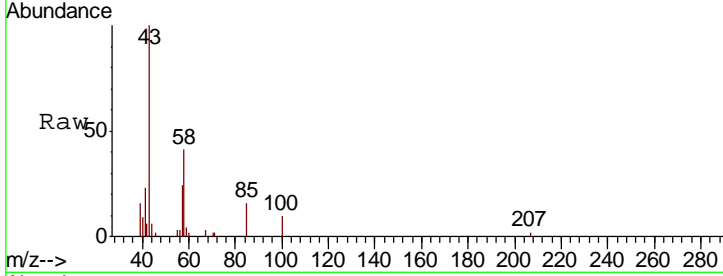




#51
 4-Methyl-2-Pentanone
 Concen: 3.440 ug/l
 RT: 10.21 min Scan# 1362
 Delta R.T. 0.00 min
 Lab File: VW012915.D
 Acq: 11 Sep 2019 14:17

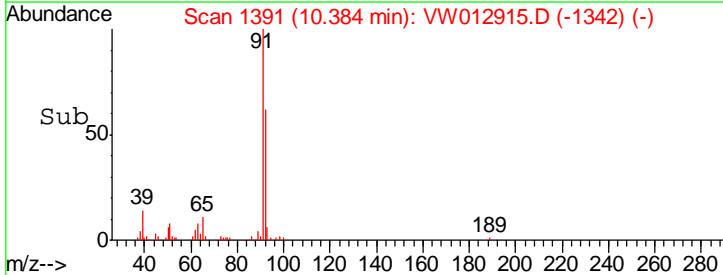
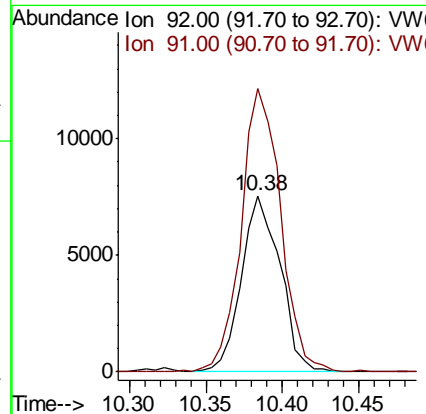
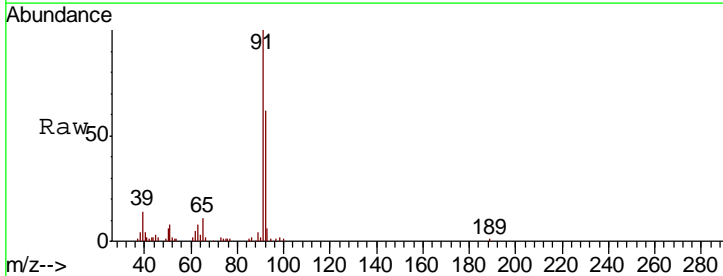
Instrument :
 MSVOA_W
 ClientSampled :
 MM-01

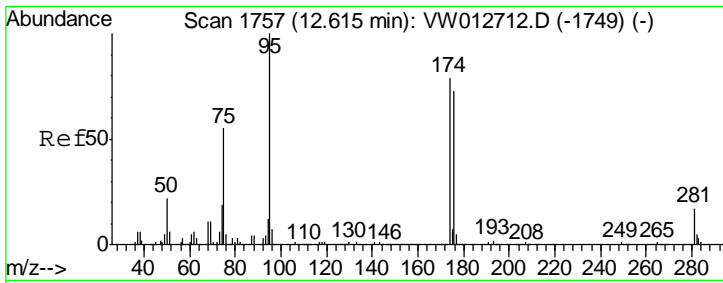
Tgt Ion: 43 Resp: 6679
 Ion Ratio Lower Upper
 43 100
 58 36.0 28.4 42.6



#52
 Toluene
 Concen: 2.508 ug/l
 RT: 10.38 min Scan# 1391
 Delta R.T. 0.00 min
 Lab File: VW012915.D
 Acq: 11 Sep 2019 14:17

Tgt Ion: 92 Resp: 13305
 Ion Ratio Lower Upper
 92 100
 91 163.9 137.0 205.4

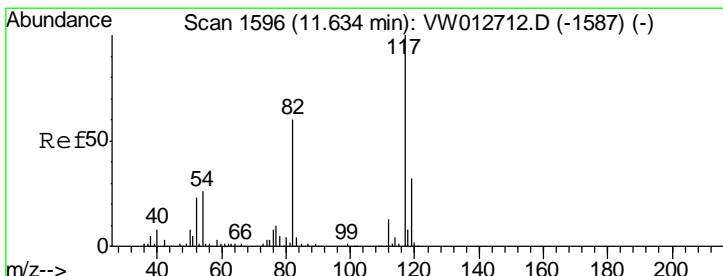
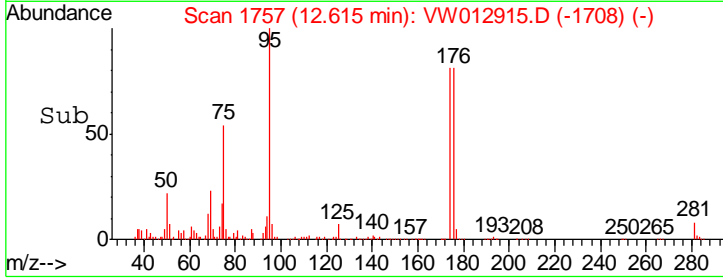
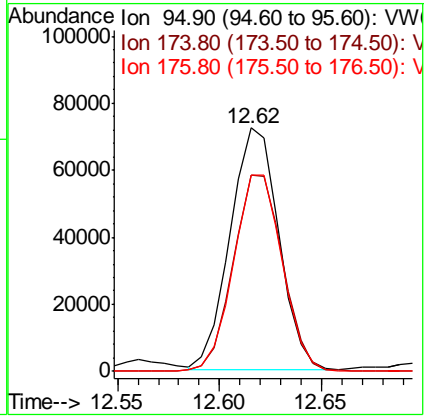
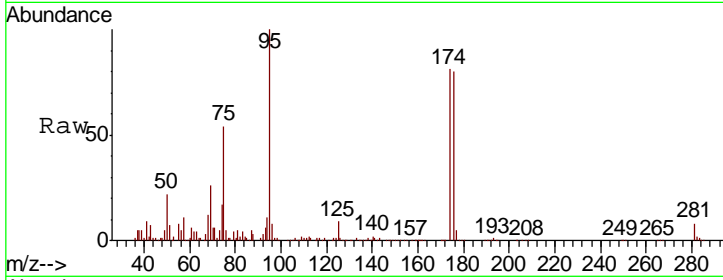




#62
 4-Bromofluorobenzene
 Concen: 40.959 ug/l
 RT: 12.62 min Scan# 1757
 Delta R.T. 0.00 min
 Lab File: VW012915.D
 Acq: 11 Sep 2019 14:17

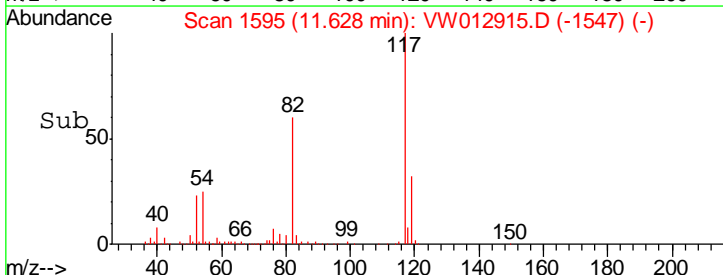
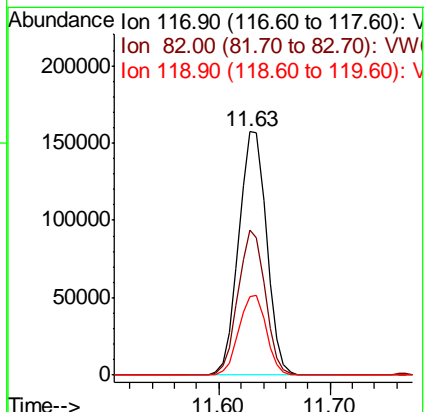
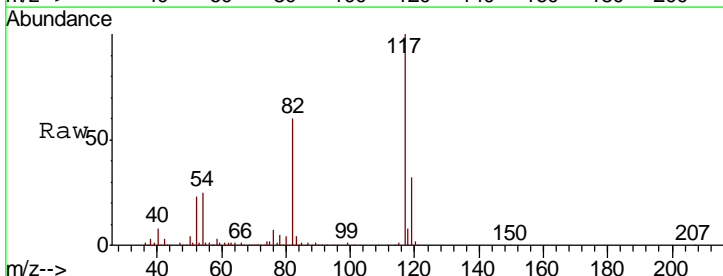
Instrument : MSVOA_W
 Client Sampled : MM-01

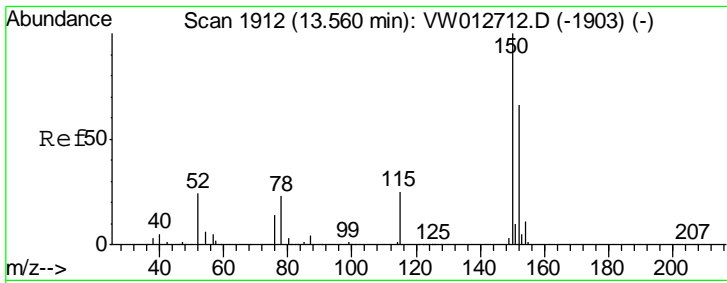
Tgt Ion	Resp	Lower	Upper
95	119414		
174	82.5	0.0	161.0
176	81.4	0.0	156.4



#63
 Chlorobenzene-d5
 Concen: 50.000 ug/l
 RT: 11.63 min Scan# 1595
 Delta R.T. -0.01 min
 Lab File: VW012915.D
 Acq: 11 Sep 2019 14:17

Tgt Ion	Resp	Lower	Upper
117	274356		
82	59.5	48.2	72.4
119	32.1	25.8	38.6

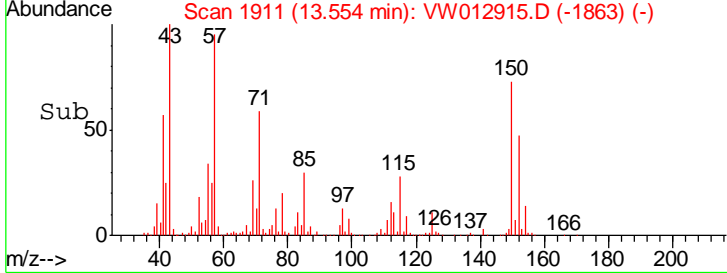
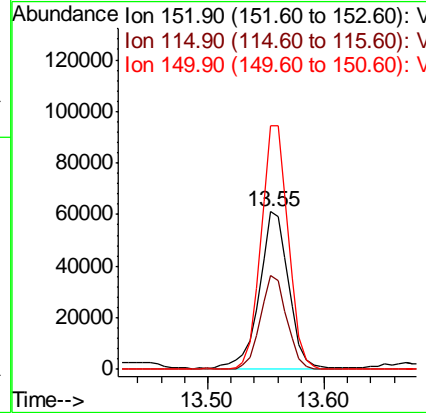
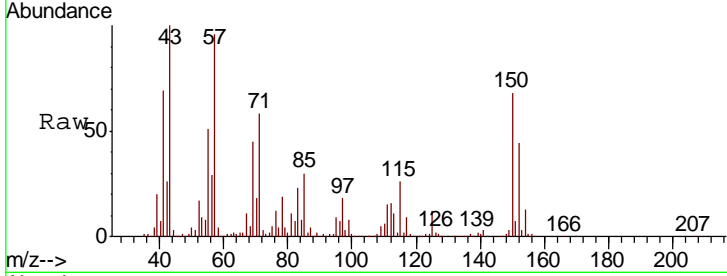




#72
 1,4-Dichlorobenzene-d4
 Concen: 50.000 ug/l
 RT: 13.55 min Scan# 1911
 Delta R.T. -0.01 min
 Lab File: VW012915.D
 Acq: 11 Sep 2019 14:17

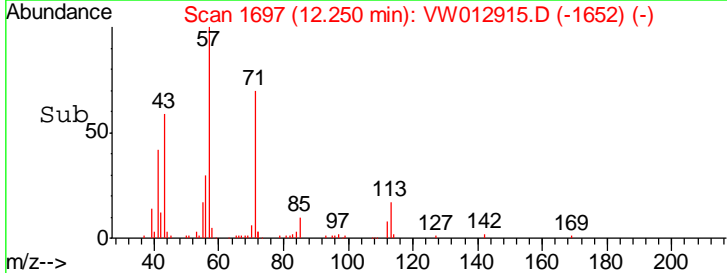
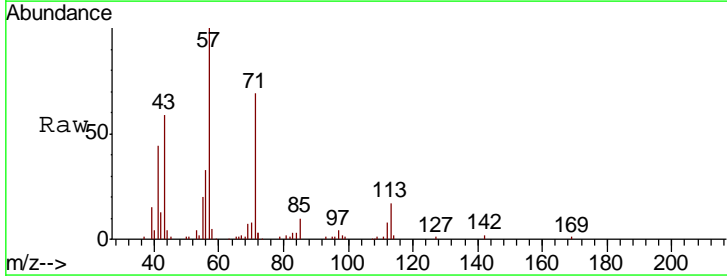
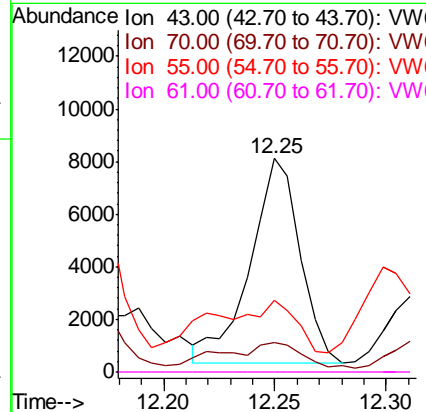
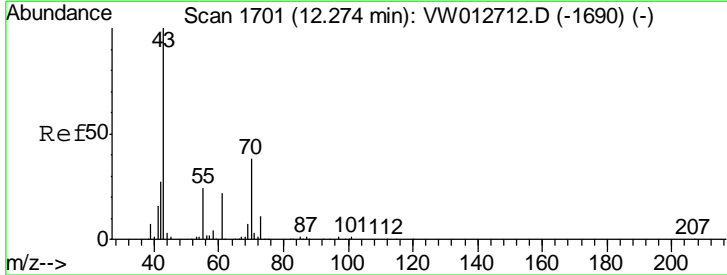
Instrument : MSVOA_W
 ClientSampled : MM-01

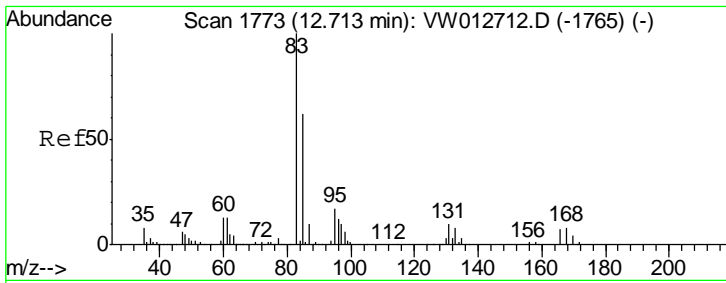
Tgt Ion	Resp	Lower	Upper
152	107669		
115	53.5	30.0	90.1
150	143.0	0.0	349.0



#74
 N-amyl acetate
 Concen: 4.935 ug/l
 RT: 12.25 min Scan# 1697
 Delta R.T. -0.02 min
 Lab File: VW012915.D
 Acq: 11 Sep 2019 14:17

Tgt Ion	Resp	Lower	Upper
43	12096		
70	20.3	29.4	44.0#
55	0.0	18.6	27.8#
61	0.0	17.8	26.6#

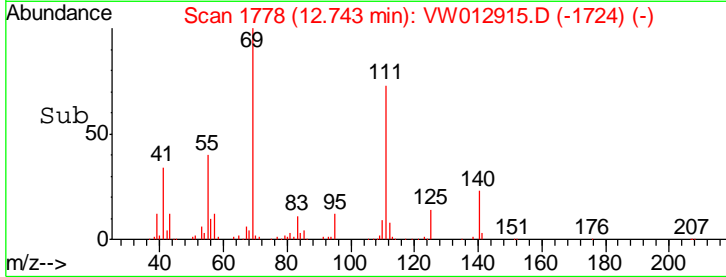
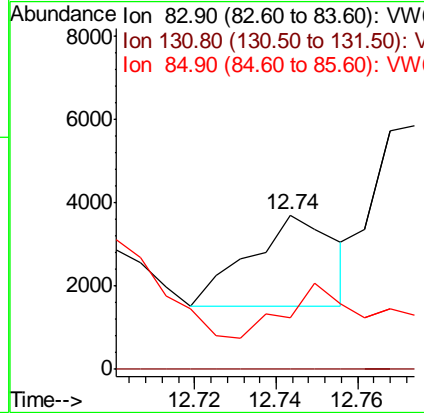
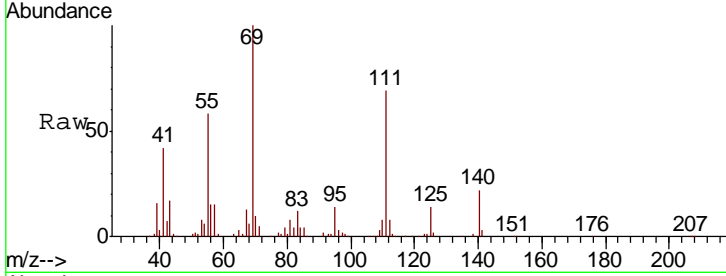




#75
 1,1,2,2-Tetrachloroethane
 Concen: 2.065 ug/l
 RT: 12.74 min Scan# 1778
 Delta R.T. 0.03 min
 Lab File: VW012915.D
 Acq: 11 Sep 2019 14:17

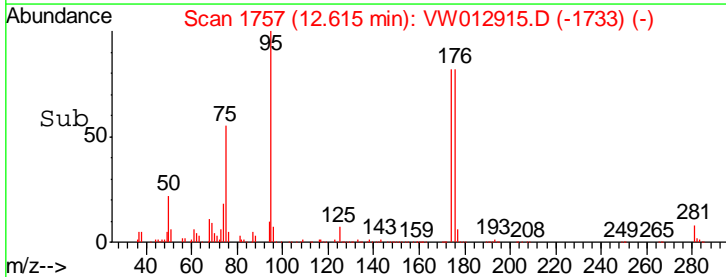
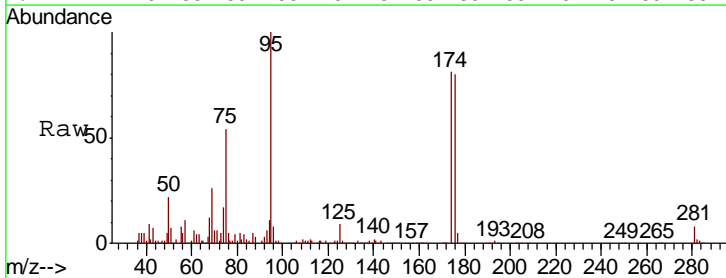
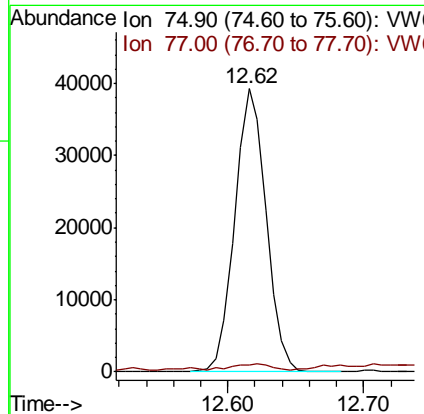
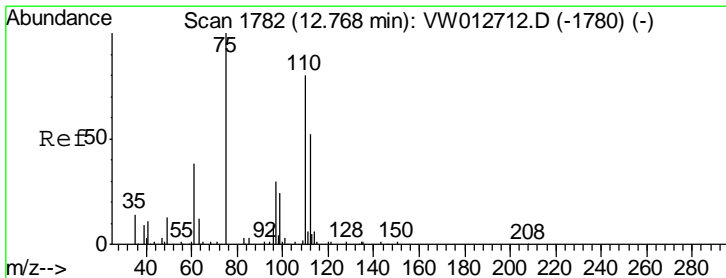
Instrument :
 MSVOA_W
 ClientSampled :
 MM-01

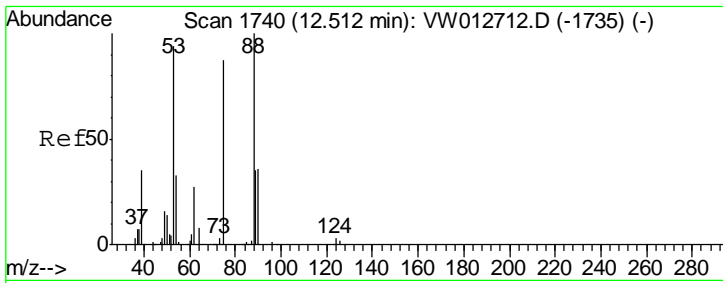
Tgt Ion	Resp	Lower	Upper
83	100		
131	0.0	5.1	15.4#
85	152.7	31.4	94.2#



#76
 1,2,3-Trichloropropane
 Concen: 57.292 ug/l
 RT: 12.62 min Scan# 1757
 Delta R.T. -0.15 min
 Lab File: VW012915.D
 Acq: 11 Sep 2019 14:17

Tgt Ion	Resp	Lower	Upper
75	100		
77	3.0	0.0	0.0#

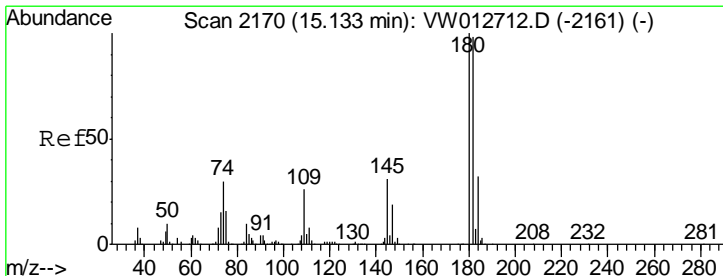
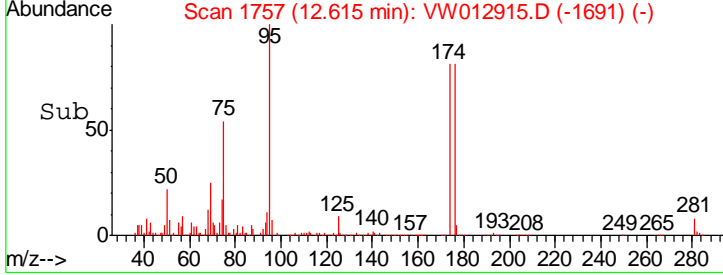
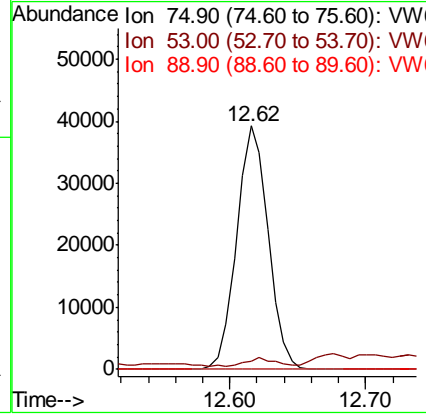
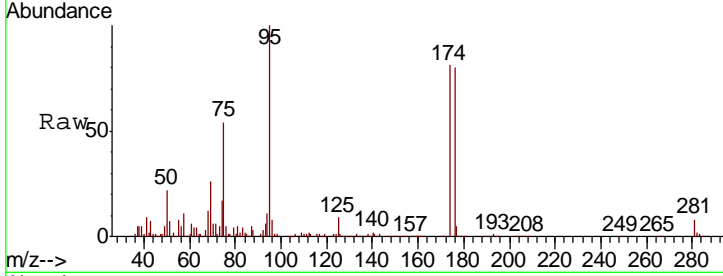




#81
 trans-1,4-Dichloro-2-butene
 Concen: 121.176 ug/l
 RT: 12.62 min Scan# 1757
 Delta R.T. 0.10 min
 Lab File: VW012915.D
 Acq: 11 Sep 2019 14:17

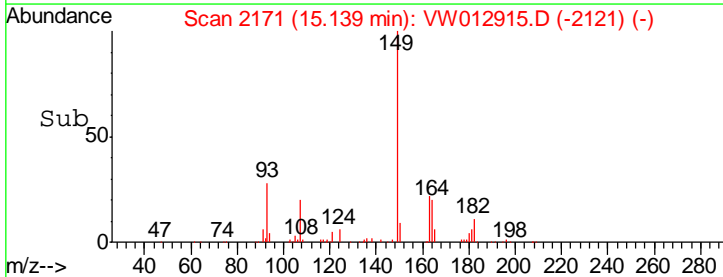
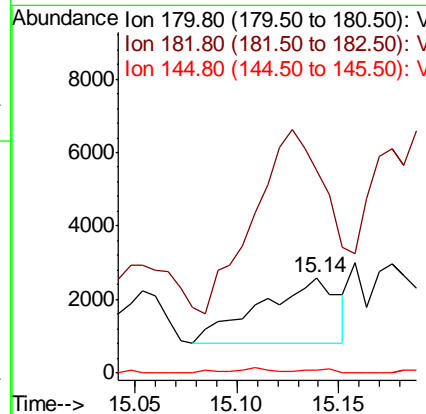
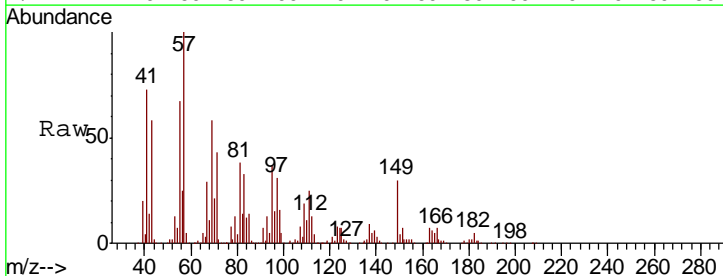
Instrument :
 MSVOA_W
 ClientSampled :
 MM-01

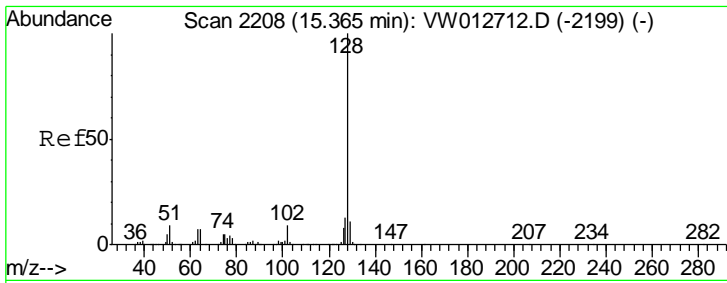
Tgt Ion	Resp	Lower	Upper
75	100		
53	3.8	87.6	131.4#
89	0.0	35.5	53.3#



#93
 1,2,4-Trichlorobenzene
 Concen: 2.146 ug/l
 RT: 15.14 min Scan# 2171
 Delta R.T. 0.01 min
 Lab File: VW012915.D
 Acq: 11 Sep 2019 14:17

Tgt Ion	Resp	Lower	Upper
180	100		
182	277.3	48.7	146.1#
145	2.3	15.0	45.1#

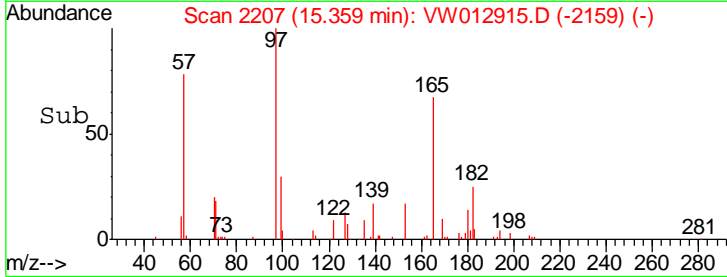
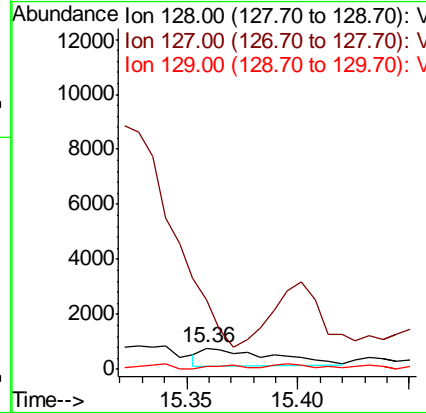
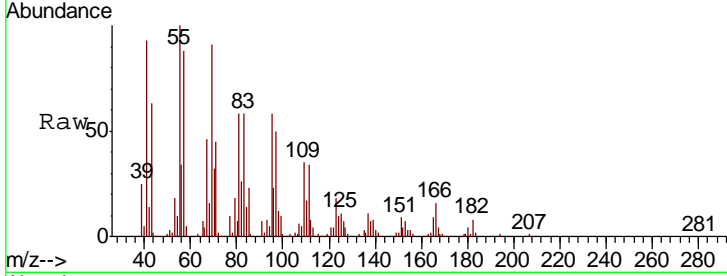




#95
 Naphthalene
 Concen: 4.729 ug/l
 RT: 15.36 min Scan# 2207
 Delta R.T. -0.01 min
 Lab File: VW012915.D
 Acq: 11 Sep 2019 14:17

Instrument :
 MSVOA_W
 ClientSampled :
 MM-01

Tgt Ion	Resp	Lower	Upper
128	1438		
127	0.0	10.7	16.1#
129	12.9	8.7	13.1



#96
 1,2,3-Trichlorobenzene
 Concen: 4.611 ug/l
 RT: 15.58 min Scan# 2243
 Delta R.T. 0.02 min
 Lab File: VW012915.D
 Acq: 11 Sep 2019 14:17

Tgt Ion	Resp	Lower	Upper
180	8771		
182	46.1	47.8	143.3#
145	0.0	15.4	46.2#

