

Data Path : Z:\VOASRV\HPCHEM1\MSVOA W\DATA\VW091119\
 Data File : VW012910.D
 Acq On : 11 Sep 2019 12:06
 Operator : SY/VA
 Sample : K4692-09RE
 Misc : 5.10G/5ML/MSVOA W/SOIL
 ALS Vial : 6 Sample Multiplier: 1

Instrument :
 MSVOA_W
 ClientSampleId :
 SB-28-9.5-10.0RE

Quant Time: Sep 11 12:42:56 2019
 Quant Method : Z:\VOASRV\HPCHEM1\MSVOA_W\METHOD\82W090719S.M
 Quant Title : SW846 8260
 QLast Update : Sun Sep 08 05:04:40 2019
 Response via : Initial Calibration

Internal Standards	R.T.	QIon	Response	Conc	Units	Dev(Min)
1) Pentafluorobenzene	7.95	168	202896	50.00	ug/l	0.00
34) 1,4-Difluorobenzene	8.84	114	297673	50.00	ug/l	0.00
63) Chlorobenzene-d5	11.63	117	204973	50.00	ug/l	0.00
72) 1,4-Dichlorobenzene-d4	13.56	152	52981	50.00	ug/l	0.00

System Monitoring Compounds

33) 1,2-Dichloroethane-d4	8.31	65	109623	48.36	ug/l	0.00
Spiked Amount				50.000		
			Recovery	=	96.72%	
35) Dibromofluoromethane	7.88	113	89868	50.78	ug/l	0.00
Spiked Amount				50.000		
			Recovery	=	101.56%	
50) Toluene-d8	10.32	98	332641	47.98	ug/l	0.00
Spiked Amount				50.000		
			Recovery	=	95.96%	
62) 4-Bromofluorobenzene	12.62	95	75210	29.88	ug/l	0.00
Spiked Amount				50.000		
			Recovery	=	59.76%	

Target Compounds

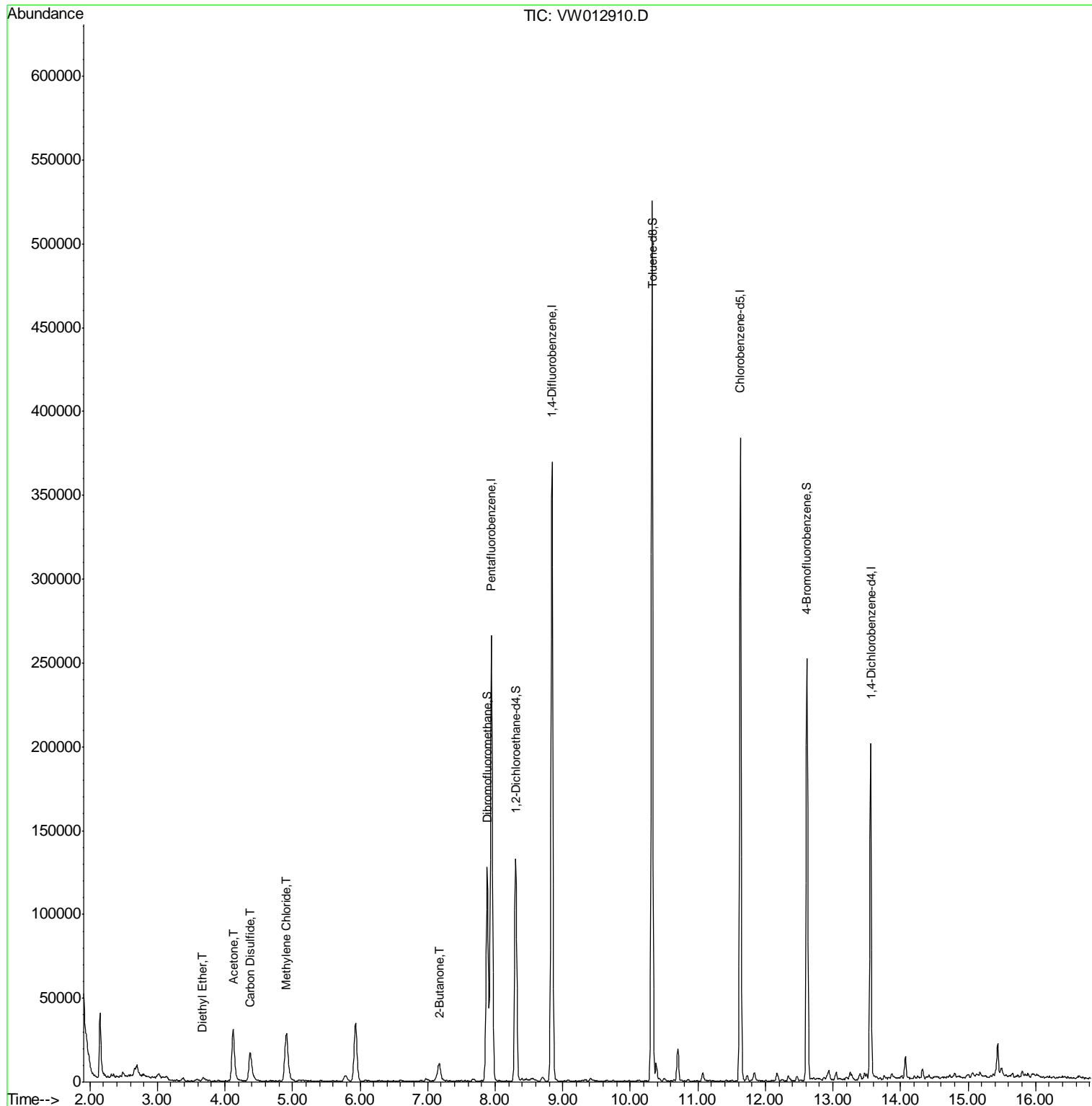
					Qvalue
8) Diethyl Ether	3.68	74	1071	1.127	ug/l 87
16) Acetone	4.12	43	57561	93.136	ug/l 98
17) Carbon Disulfide	4.37	76	36376	10.228	ug/l 96
20) Methylene Chloride	4.90	84	22827	11.806	ug/l 89
25) 2-Butanone	7.17	43	15360	35.231	ug/l 93

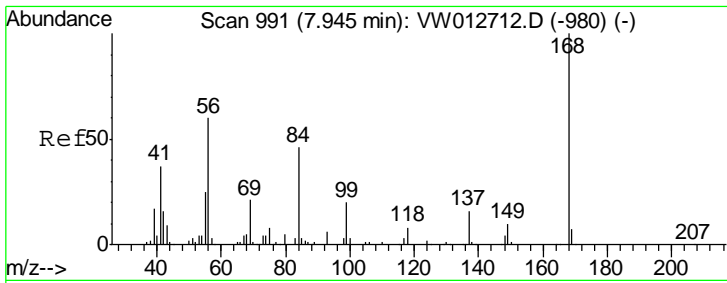
(#) = qualifier out of range (m) = manual integration (+) = signals summed

Data Path : Z:\VOASRV\HPCHEM1\MSVOA W\DATA\VW091119\
 Data File : VW012910.D
 Acq On : 11 Sep 2019 12:06
 Operator : SY/VA
 Sample : K4692-09RE
 Misc : 5.10G/5ML/MSVOA W/SOIL
 ALS Vial : 6 Sample Multiplier: 1

Instrument :
 MSVOA_W
 ClientSampleId :
 SB-28-9.5-10.0RE

Quant Time: Sep 11 12:42:56 2019
 Quant Method : Z:\VOASRV\HPCHEM1\MSVOA_W\METHOD\82W090719S.M
 Quant Title : SW846 8260
 QLast Update : Sun Sep 08 05:04:40 2019
 Response via : Initial Calibration

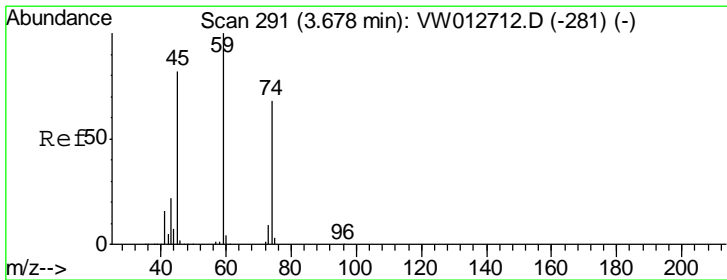
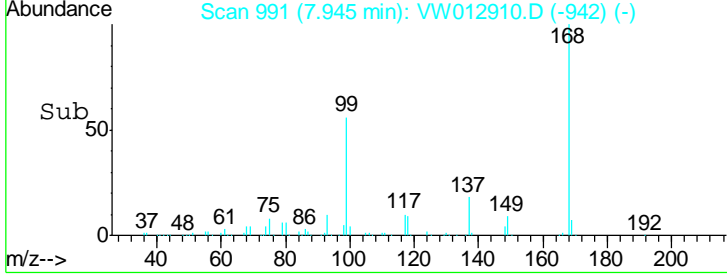
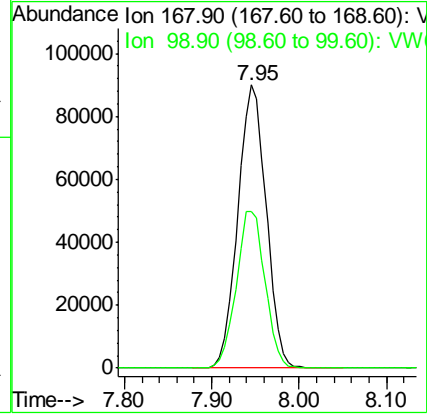
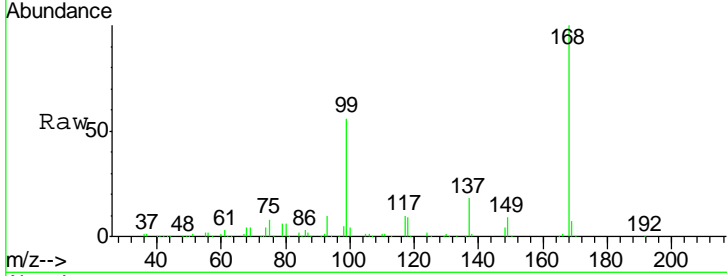




#1
 Pentafluorobenzene
 Concen: 50.000 ug/l
 RT: 7.95 min Scan# 991
 Delta R.T. -0.00 min
 Lab File: VW012910.D
 Acq: 11 Sep 2019 12:06

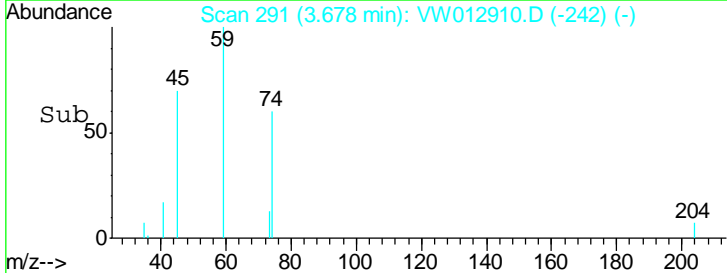
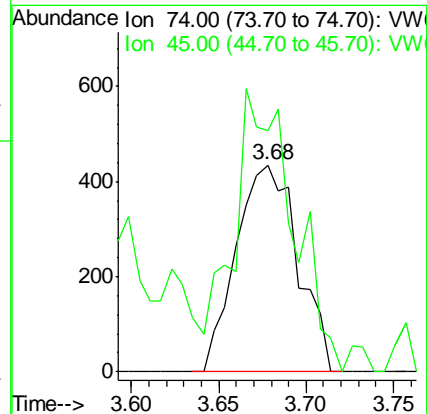
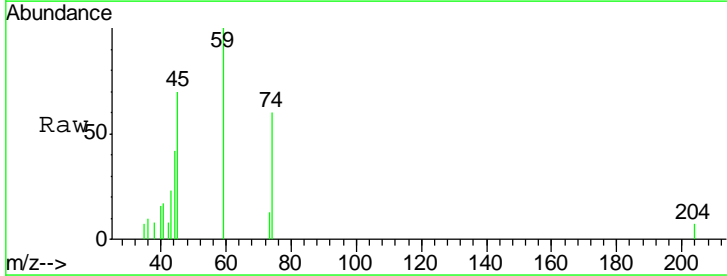
Instrument :
 MSVOA_W
ClientSampled :
 SB-28-9.5-10.0RE

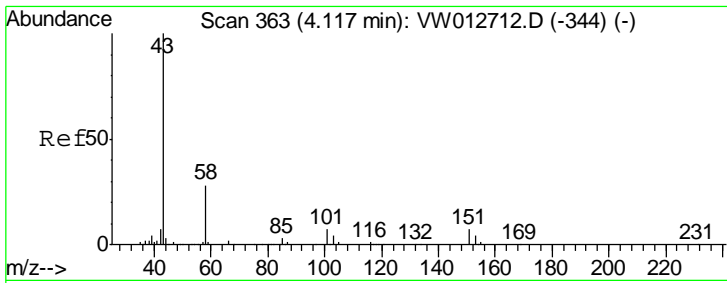
Tgt Ion	Resp	Lower	Upper
168	100		
99	55.6	47.8	71.6



#8
 Diethyl Ether
 Concen: 1.127 ug/l
 RT: 3.68 min Scan# 291
 Delta R.T. -0.00 min
 Lab File: VW012910.D
 Acq: 11 Sep 2019 12:06

Tgt Ion	Resp	Lower	Upper
74	100		
45	131.8	58.8	176.4

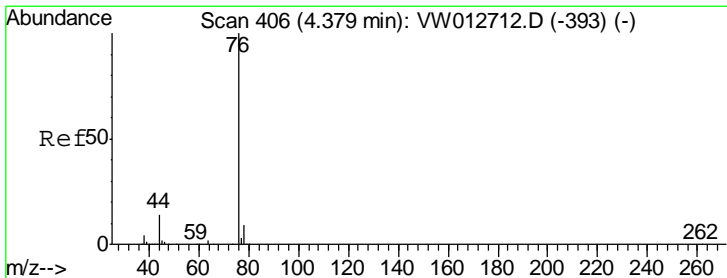
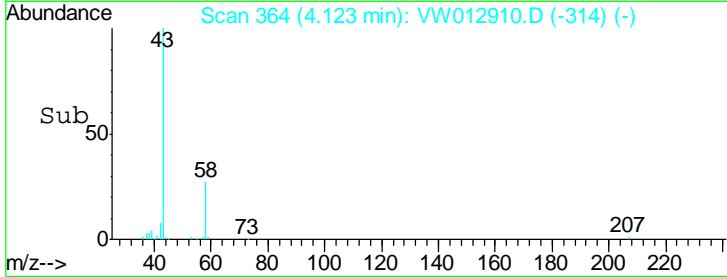
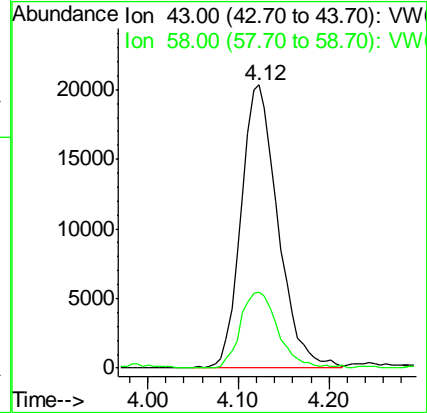
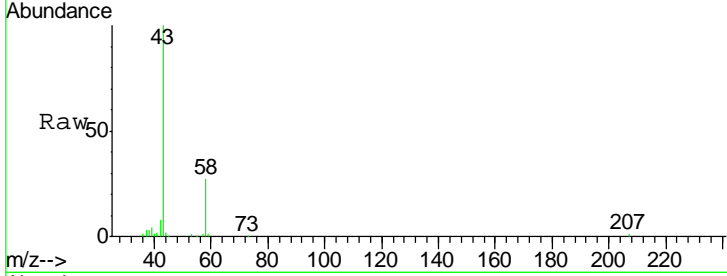




#16
 Acetone
 Concen: 93.136 ug/l
 RT: 4.12 min Scan# 364
 Delta R.T. 0.01 min
 Lab File: VW012910.D
 Acq: 11 Sep 2019 12:06

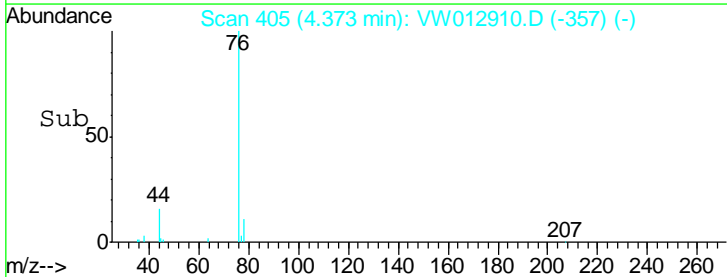
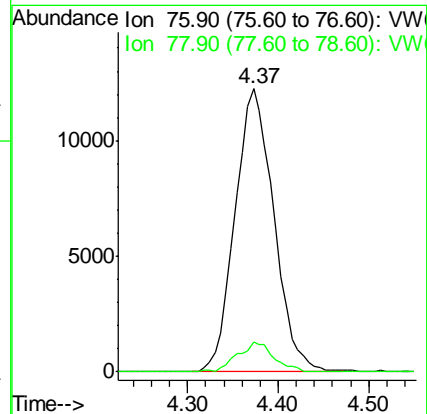
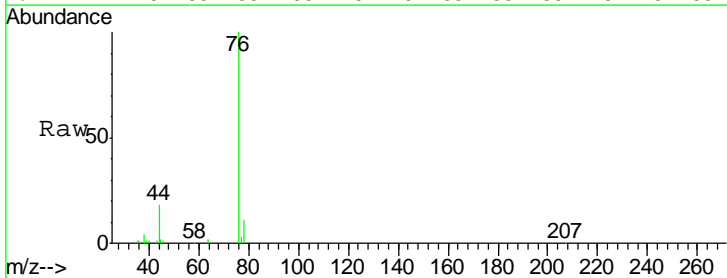
Instrument :
 MSVOA_W
 ClientSampled :
 SB-28-9.5-10.0RE

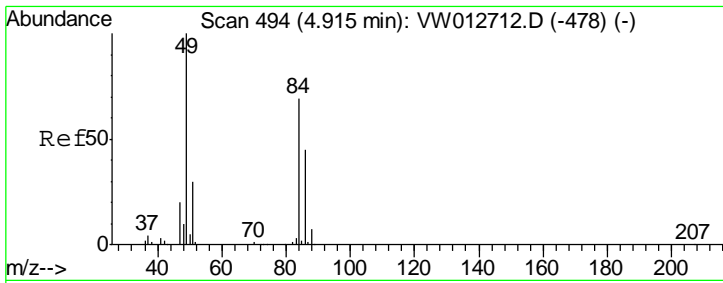
Tgt Ion: 43 Resp: 57561
 Ion Ratio Lower Upper
 43 100
 58 26.9 22.6 33.8



#17
 Carbon Disulfide
 Concen: 10.228 ug/l
 RT: 4.37 min Scan# 405
 Delta R.T. -0.01 min
 Lab File: VW012910.D
 Acq: 11 Sep 2019 12:06

Tgt Ion: 76 Resp: 36376
 Ion Ratio Lower Upper
 76 100
 78 10.6 7.2 10.8

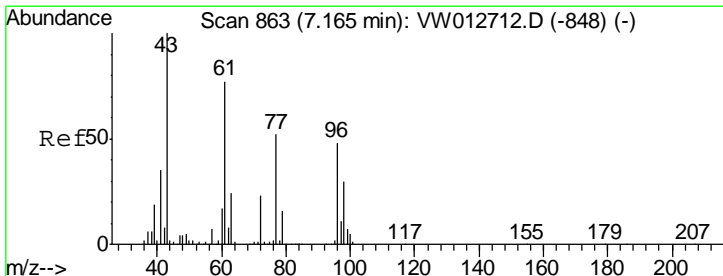
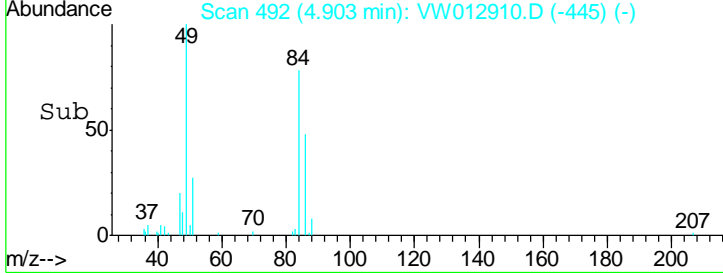
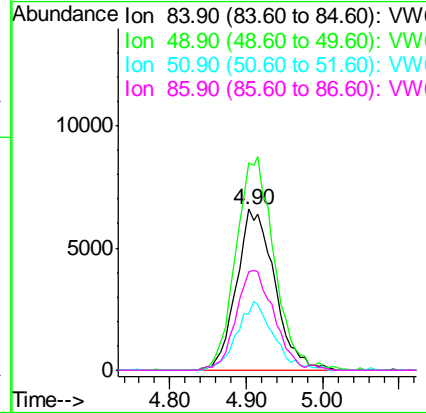
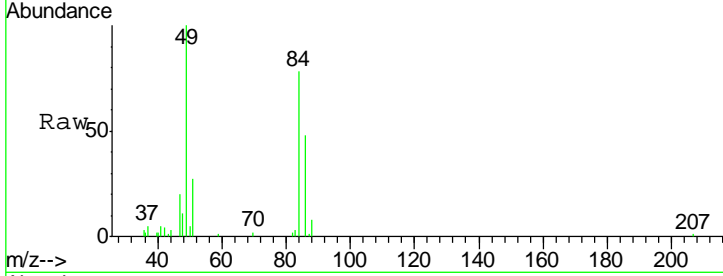




#20
 Methylene Chloride
 Concen: 11.806 ug/l
 RT: 4.90 min Scan# 492
 Delta R.T. -0.01 min
 Lab File: VW012910.D
 Acq: 11 Sep 2019 12:06

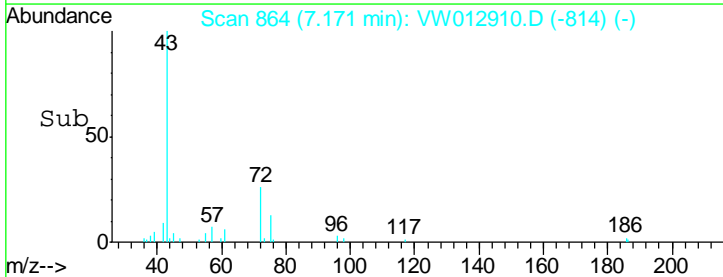
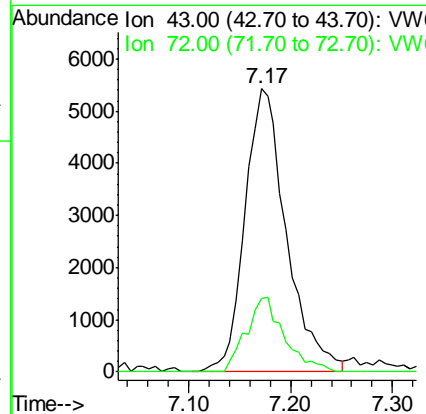
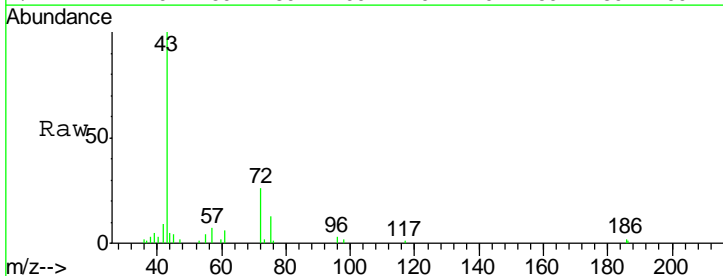
Instrument :
 MSVOA_W
ClientSampled :
 SB-28-9.5-10.0RE

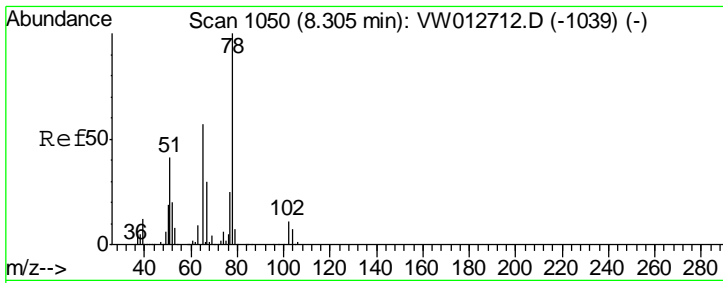
Tgt Ion	Resp	Lower	Upper
84	100		
49	128.9	115.4	173.0
51	35.1	34.9	52.3
86	61.3	52.2	78.4



#25
 2-Butanone
 Concen: 35.231 ug/l
 RT: 7.17 min Scan# 864
 Delta R.T. 0.01 min
 Lab File: VW012910.D
 Acq: 11 Sep 2019 12:06

Tgt Ion	Resp	Lower	Upper
43	100		
72	26.1	18.0	27.0

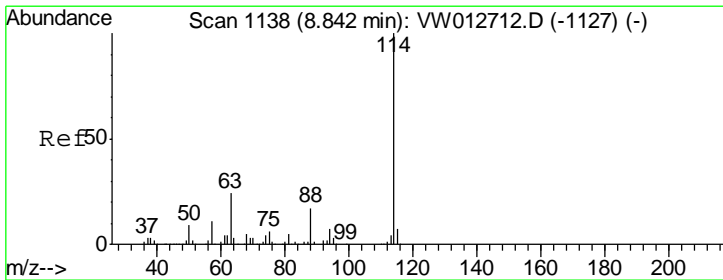
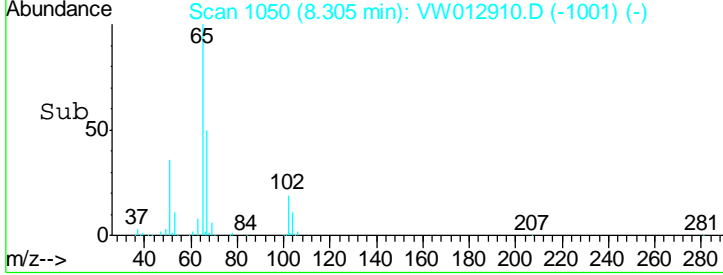
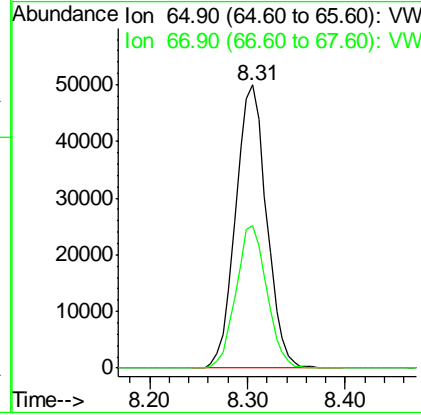
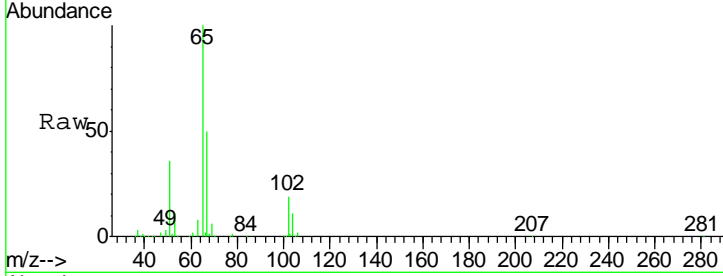




#33
 1,2-Dichloroethane-d4
 Concen: 48.356 ug/l
 RT: 8.31 min Scan# 1050
 Delta R.T. -0.00 min
 Lab File: VW012910.D
 Acq: 11 Sep 2019 12:06

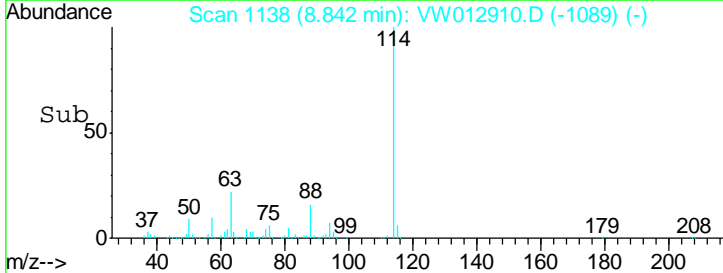
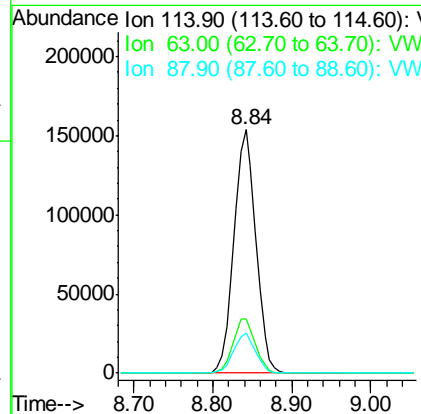
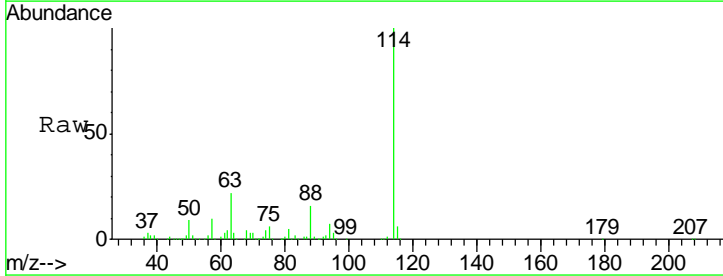
Instrument :
 MSVOA_W
ClientSampled :
 SB-28-9.5-10.0RE

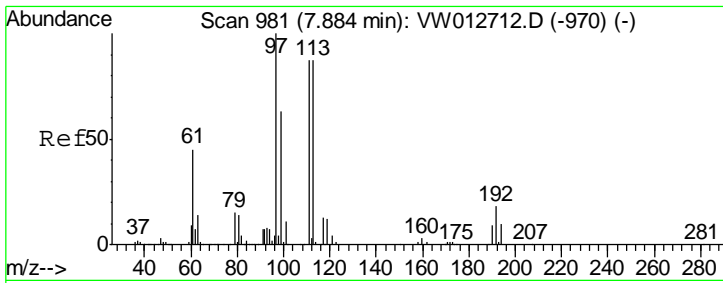
Tgt Ion	Resp	Lower	Upper
65	100		
67	50.1	0.0	101.8



#34
 1,4-Difluorobenzene
 Concen: 50.000 ug/l
 RT: 8.84 min Scan# 1138
 Delta R.T. -0.00 min
 Lab File: VW012910.D
 Acq: 11 Sep 2019 12:06

Tgt Ion	Resp	Lower	Upper
114	100		
63	22.5	0.0	47.2
88	16.4	0.0	34.0

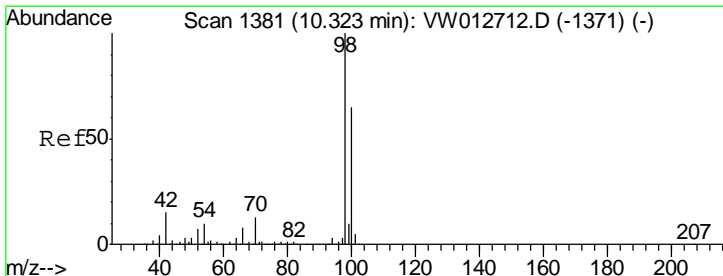
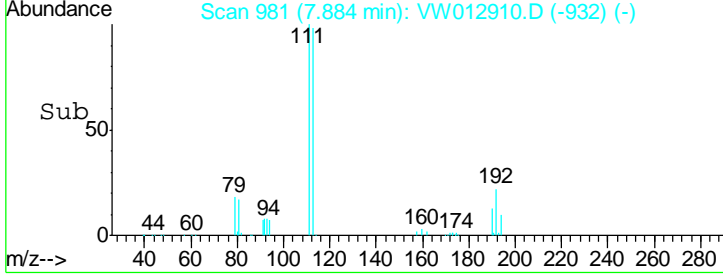
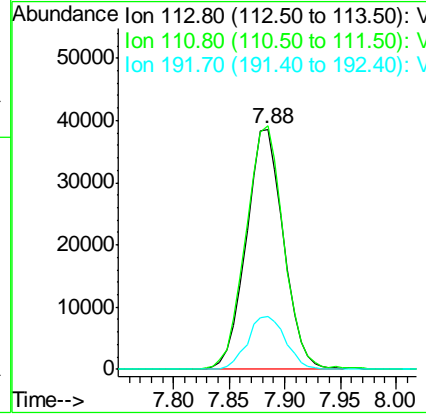
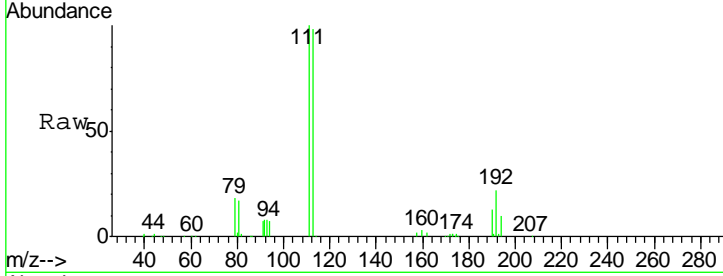




#35
 Dibromofluoromethane
 Concen: 50.780 ug/l
 RT: 7.88 min Scan# 981
 Delta R.T. -0.00 min
 Lab File: VW012910.D
 Acq: 11 Sep 2019 12:06

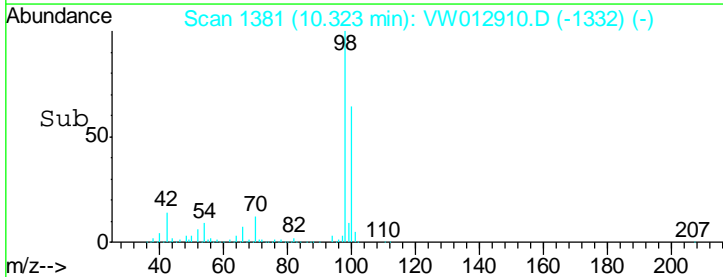
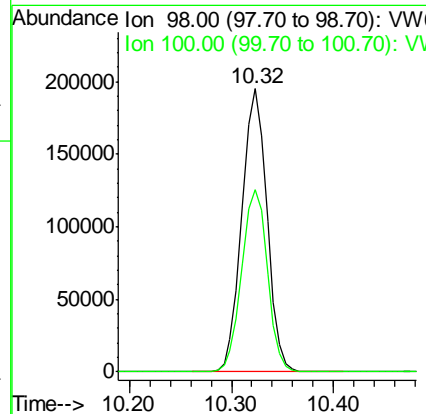
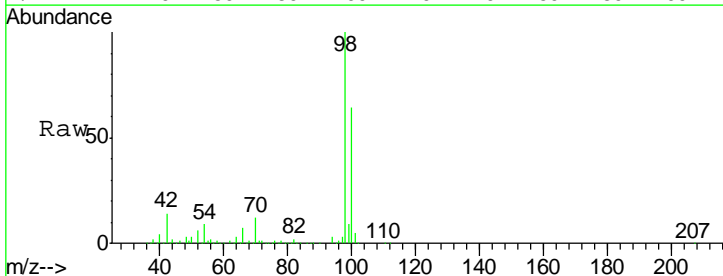
Instrument :
 MSVOA_W
ClientSampled :
 SB-28-9.5-10.0RE

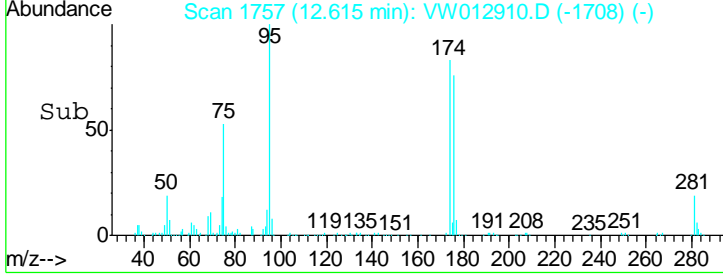
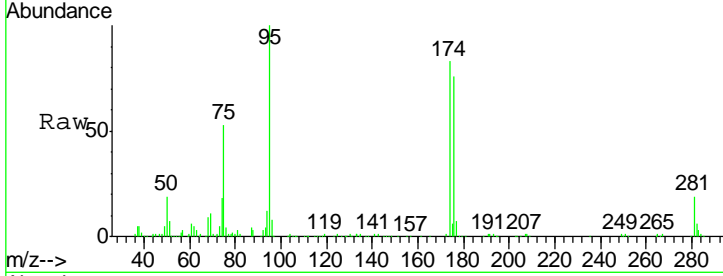
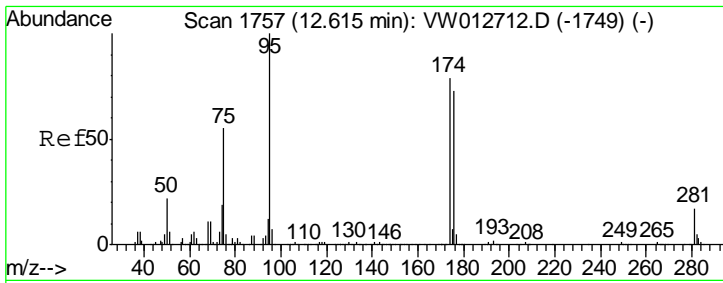
Tgt Ion	Resp	Lower	Upper
113	89868		
113	100		
111	103.2	80.2	120.4
192	22.8	17.3	25.9



#50
 Toluene-d8
 Concen: 47.976 ug/l
 RT: 10.32 min Scan# 1381
 Delta R.T. -0.00 min
 Lab File: VW012910.D
 Acq: 11 Sep 2019 12:06

Tgt Ion	Resp	Lower	Upper
98	332641		
98	100		
100	65.8	52.2	78.4

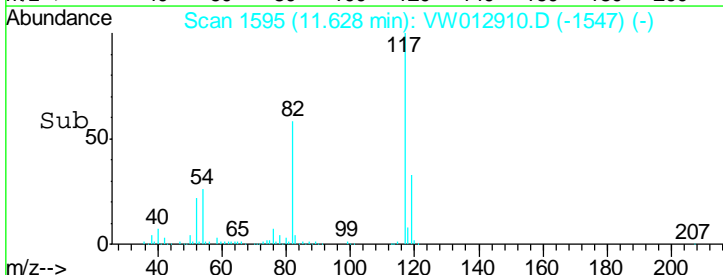
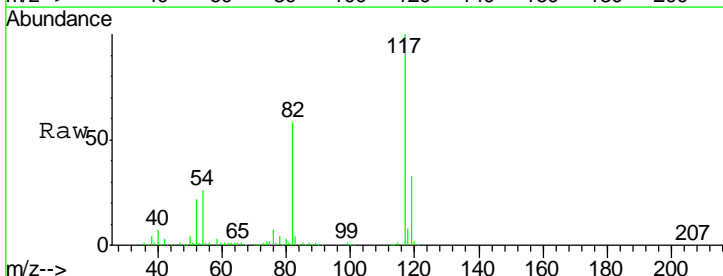
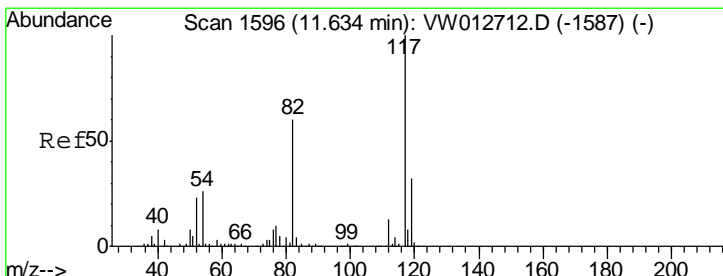
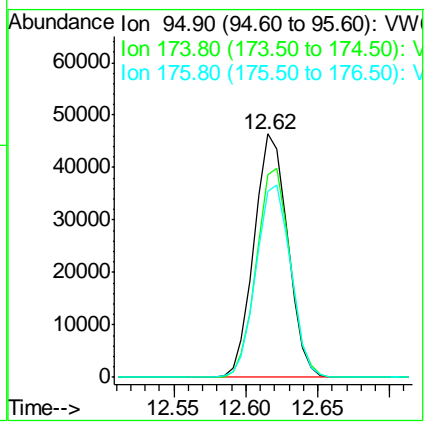




#62
 4-Bromofluorobenzene
 Concen: 29.880 ug/l
 RT: 12.62 min Scan# 1757
 Delta R.T. -0.00 min
 Lab File: VW012910.D
 Acq: 11 Sep 2019 12:06

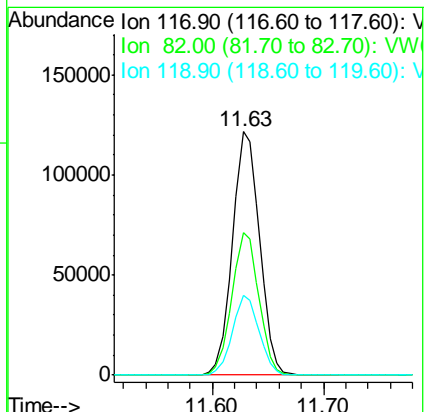
Instrument :
 MSVOA_W
 ClientSampleId :
 SB-28-9.5-10.0RE

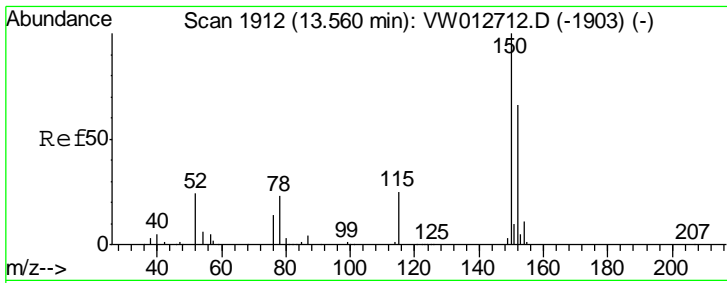
Tgt Ion	Resp	Lower	Upper
95	75210		
174	86.0	0.0	161.0
176	81.3	0.0	156.4



#63
 Chlorobenzene-d5
 Concen: 50.000 ug/l
 RT: 11.63 min Scan# 1595
 Delta R.T. -0.01 min
 Lab File: VW012910.D
 Acq: 11 Sep 2019 12:06

Tgt Ion	Resp	Lower	Upper
117	204973		
82	58.4	48.2	72.4
119	32.6	25.8	38.6





#72
 1,4-Dichlorobenzene-d4
 Concen: 50.000 ug/l
 RT: 13.56 min Scan# 1912
 Delta R.T. -0.00 min
 Lab File: VW012910.D
 Acq: 11 Sep 2019 12:06

Instrument :
 MSVOA_W
 ClientSampled :
 SB-28-9.5-10.0RE

Tot Ion	Resp	Lower	Upper
152	100		
115	58.1	30.0	90.1
150	158.5	0.0	349.0

