

Data Path : Z:\VOASRV\HPCHEM1\MSVOA W\DATA\VW091418\  
 Data File : VW005362.D  
 Acq On : 13 Sep 2018 21:11  
 Operator : SY/AP  
 Sample : J4885-02MS  
 Misc : 2.77G/10ML/MSVOA W/SOIL  
 ALS Vial : 1 Sample Multiplier: 1

Instrument :  
 MSVOA\_W  
 ClientSampleId :  
 H2TS2MS

Quant Time: Sep 14 07:08:27 2018  
 Quant Method : Z:\VOASRV\HPCHEM1\MSVOA\_W\METHOD\SOM2WLM091318S.M  
 Quant Title : VOC Analysis  
 QLast Update : Fri Sep 14 06:56:14 2018  
 Response via : Initial Calibration

| Internal Standards         | R.T.  | QIon | Response | Conc  | Units | Dev(Min) |
|----------------------------|-------|------|----------|-------|-------|----------|
| 1) 1,4-Difluorobenzene     | 8.85  | 114  | 319261   | 25.00 | ug/L  | 0.00     |
| 28) Chlorobenzene-d5       | 11.64 | 117  | 308324   | 25.00 | ug/L  | 0.00     |
| 60) 1,4-Dichlorobenzene-d4 | 13.57 | 152  | 144345   | 25.00 | ug/L  | 0.00     |

System Monitoring Compounds

|                                |        |       |          |          |      |         |
|--------------------------------|--------|-------|----------|----------|------|---------|
| 4) Vinyl Chloride-d3           | 2.35   | 65    | 86772    | 23.55    | ug/L | 0.00    |
| Spiked Amount                  | 25.000 | Range | 30 - 150 | Recovery | =    | 94.20%  |
| 7) Chloroethane-d5             | 2.89   | 69    | 69908    | 26.83    | ug/L | 0.00    |
| Spiked Amount                  | 25.000 | Range | 30 - 150 | Recovery | =    | 107.32% |
| 10) 1,1-Dichloroethene-d2      | 4.03   | 63    | 168308   | 25.58    | ug/L | 0.00    |
| Spiked Amount                  | 25.000 | Range | 45 - 110 | Recovery | =    | 102.32% |
| 20) 2-Butanone-d5              | 7.09   | 46    | 47324    | 34.10    | ug/L | 0.00    |
| Spiked Amount                  | 50.000 | Range | 20 - 135 | Recovery | =    | 68.20%  |
| 24) Chloroform-d               | 7.65   | 84    | 166788   | 28.01    | ug/L | 0.00    |
| Spiked Amount                  | 25.000 | Range | 40 - 150 | Recovery | =    | 112.04% |
| 26) 1,2-Dichloroethane-d4      | 8.31   | 65    | 105329   | 27.66    | ug/L | 0.00    |
| Spiked Amount                  | 25.000 | Range | 70 - 130 | Recovery | =    | 110.64% |
| 29) Benzene-d6                 | 8.28   | 84    | 335245   | 27.08    | ug/L | 0.00    |
| Spiked Amount                  | 25.000 | Range | 20 - 135 | Recovery | =    | 108.32% |
| 33) 1,2-Dichloropropane-d6     | 9.28   | 67    | 101112   | 28.62    | ug/L | 0.00    |
| Spiked Amount                  | 25.000 | Range | 70 - 120 | Recovery | =    | 114.48% |
| 37) Toluene-d8                 | 10.33  | 98    | 343929   | 27.43    | ug/L | 0.00    |
| Spiked Amount                  | 25.000 | Range | 30 - 130 | Recovery | =    | 109.72% |
| 38) trans-1,3-Dichloropropene- | 10.59  | 79    | 46810    | 26.48    | ug/L | 0.00    |
| Spiked Amount                  | 25.000 | Range | 30 - 135 | Recovery | =    | 105.92% |
| 39) 2-Hexanone-d5              | 10.93  | 63    | 40952    | 37.22    | ug/L | 0.00    |
| Spiked Amount                  | 50.000 | Range | 20 - 135 | Recovery | =    | 74.44%  |
| 48) 1,1,2,2-Tetrachloroethane- | 12.69  | 84    | 83021    | 22.47    | ug/L | 0.00    |
| Spiked Amount                  | 25.000 | Range | 45 - 120 | Recovery | =    | 89.88%  |
| 61) 1,2-Dichlorobenzene-d4     | 13.86  | 152   | 126145   | 29.12    | ug/L | 0.00    |
| Spiked Amount                  | 25.000 | Range | 75 - 120 | Recovery | =    | 116.48% |

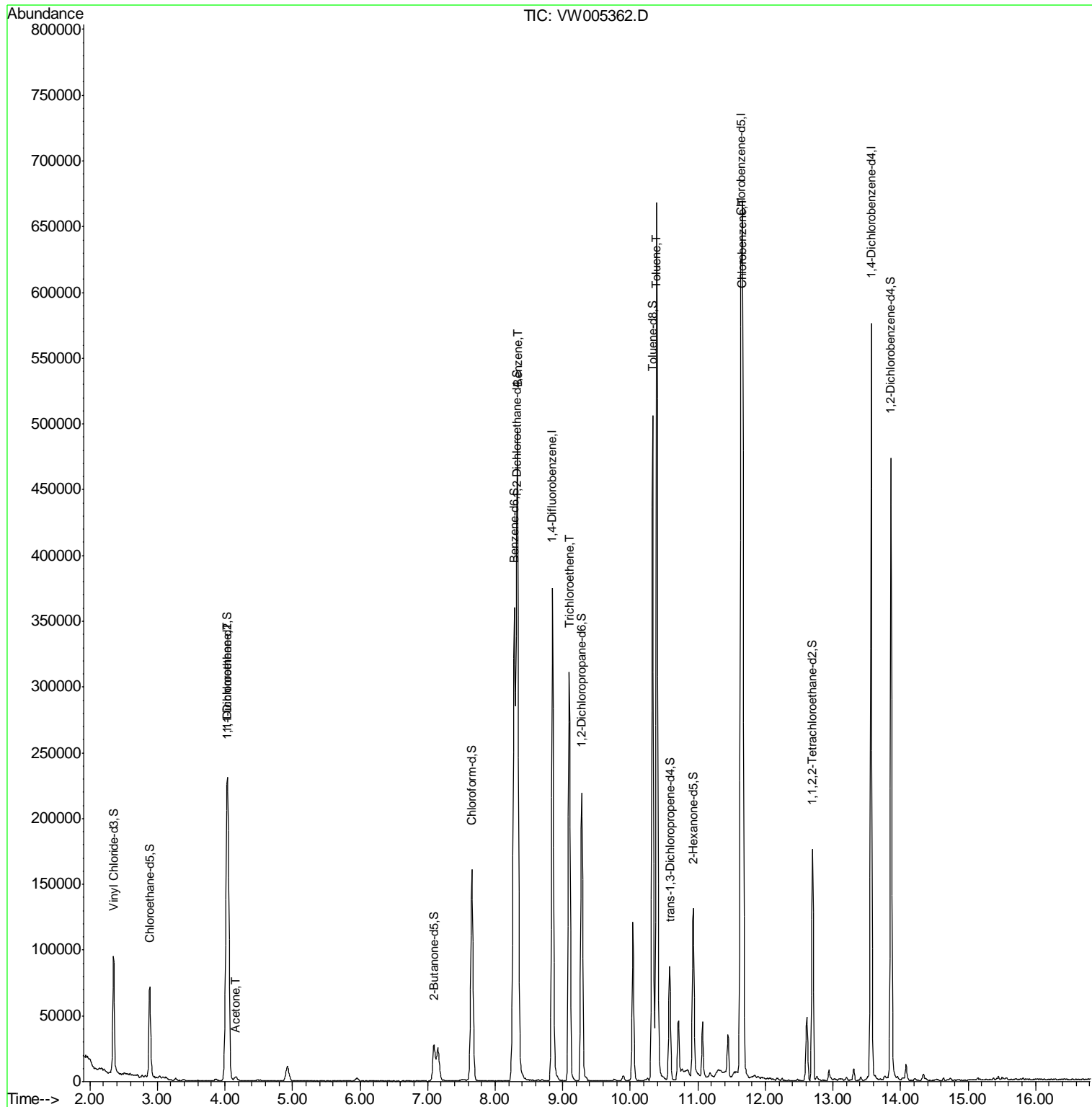
| Target Compounds       | R.T.  | QIon | Response | Conc  | Units | Ovalue |
|------------------------|-------|------|----------|-------|-------|--------|
| 12) 1,1-Dichloroethene | 4.04  | 96   | 86735    | 24.96 | ug/L  | 92     |
| 13) Acetone            | 4.15  | 43   | 3439     | 2.64  | ug/L  | 61     |
| 34) Benzene            | 8.33  | 78   | 425023   | 24.74 | ug/L  | 100    |
| 35) Trichloroethene    | 9.10  | 95   | 106504   | 23.36 | ug/L  | 98     |
| 44) Toluene            | 10.40 | 91   | 504599   | 25.64 | ug/L  | 99     |
| 52) Chlorobenzene      | 11.66 | 112  | 316601   | 24.65 | ug/L  | 96     |

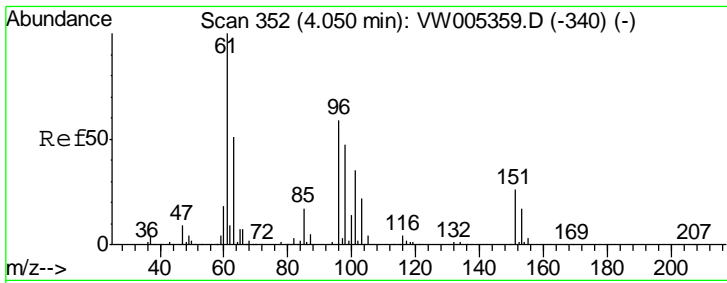
(#) = qualifier out of range (m) = manual integration (+) = signals summed

Data Path : Z:\VOASRV\HPCHEM1\MSVOA W\DATA\VW091418\  
 Data File : VW005362.D  
 Acq On : 13 Sep 2018 21:11  
 Operator : SY/AP  
 Sample : J4885-02MS  
 Misc : 2.77G/10ML/MSVOA W/SOIL  
 ALS Vial : 1 Sample Multiplier: 1

Instrument :  
 MSVOA\_W  
 Client Sampled :  
 H2TS2MS

Quant Time: Sep 14 07:08:27 2018  
 Quant Method : Z:\VOASRV\HPCHEM1\MSVOA\_W\METHOD\SOM2WLM091318S.M  
 Quant Title : VOC Analysis  
 QLast Update : Fri Sep 14 06:56:14 2018  
 Response via : Initial Calibration

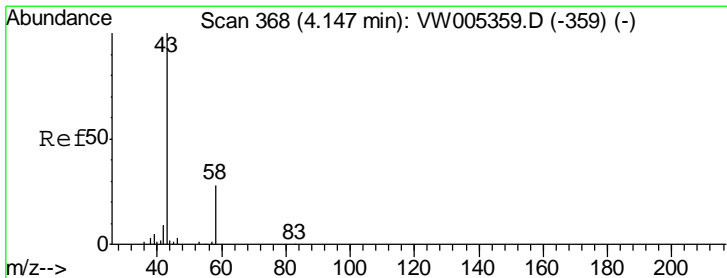
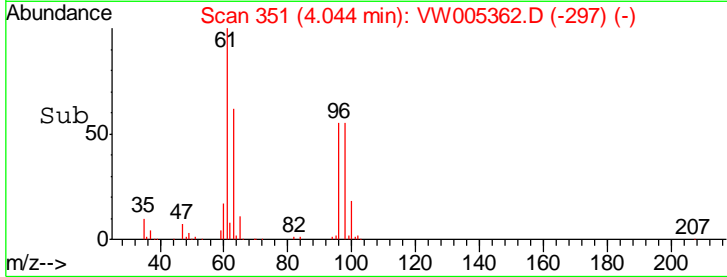
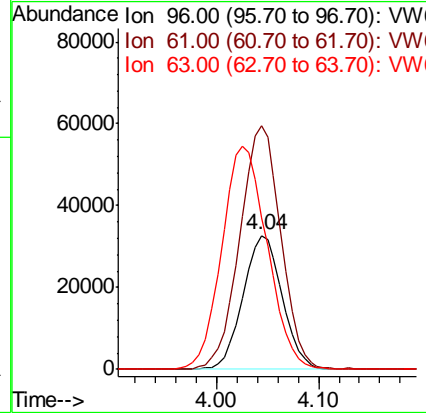
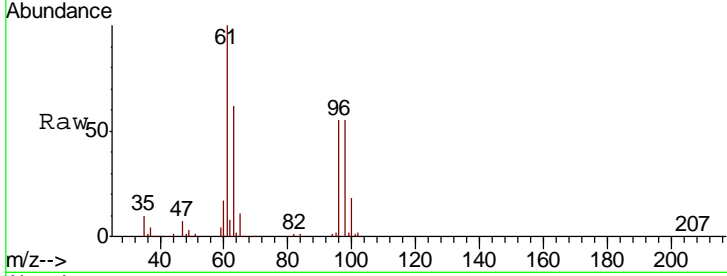




#12  
 1,1-Dichloroethene  
 Concen: 24.96 ug/L  
 RT: 4.04 min Scan# 351  
 Delta R.T. 0.00 min  
 Lab File: VW005362.D  
 Acq: 13 Sep 2018 21:11

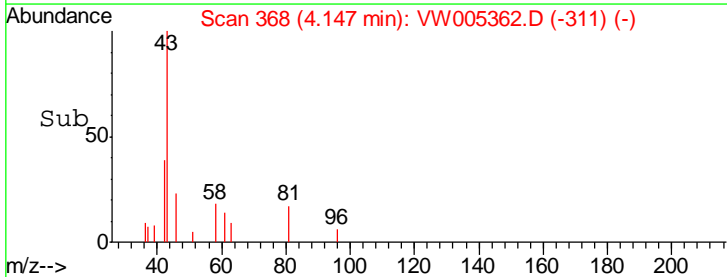
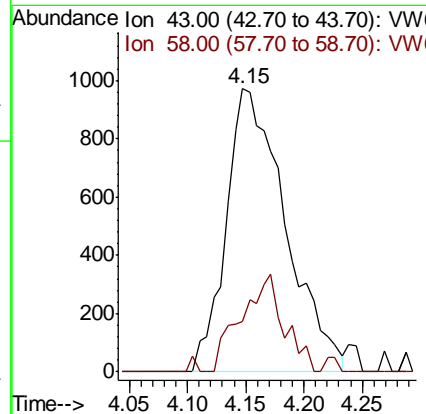
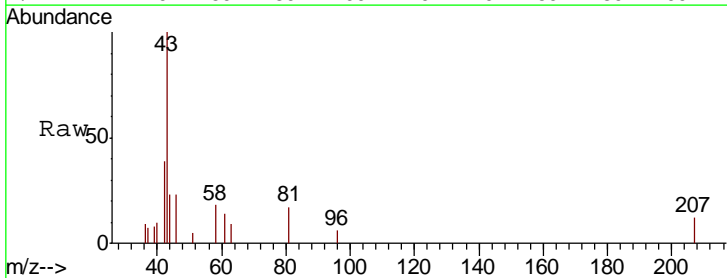
Instrument :  
 MSVOA\_W  
 ClientSampled :  
 H2TS2MS

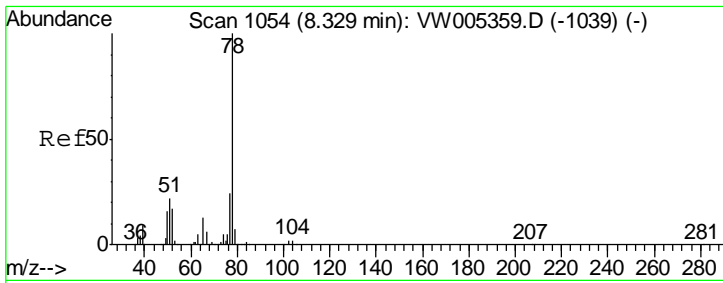
| Tgt Ion | Resp  | Lower | Upper |
|---------|-------|-------|-------|
| 96      | 86735 |       |       |
| 61      | 182.2 | 123.3 | 229.1 |
| 63      | 113.4 | 69.4  | 128.8 |



#13  
 Acetone  
 Concen: 2.64 ug/L  
 RT: 4.15 min Scan# 368  
 Delta R.T. 0.02 min  
 Lab File: VW005362.D  
 Acq: 13 Sep 2018 21:11

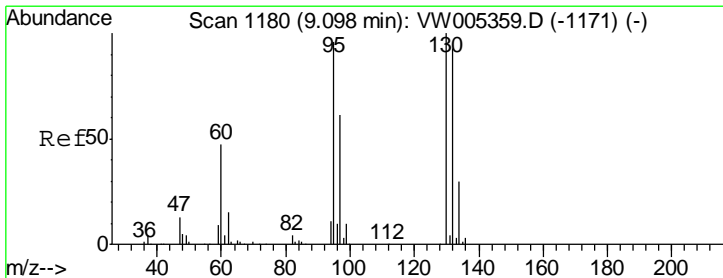
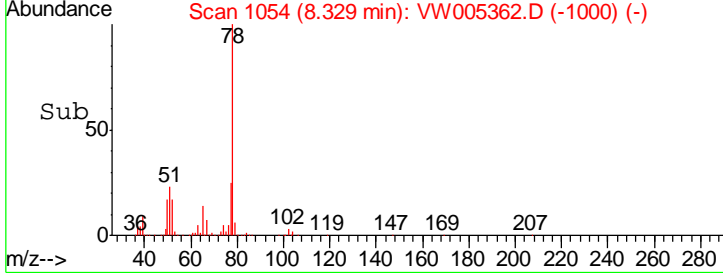
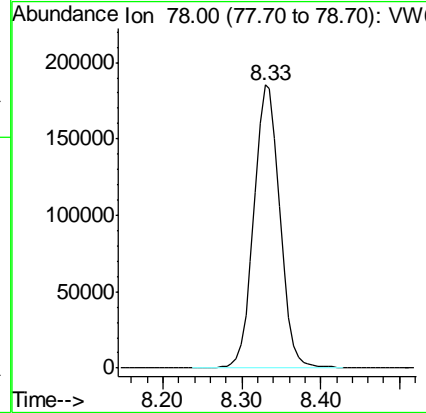
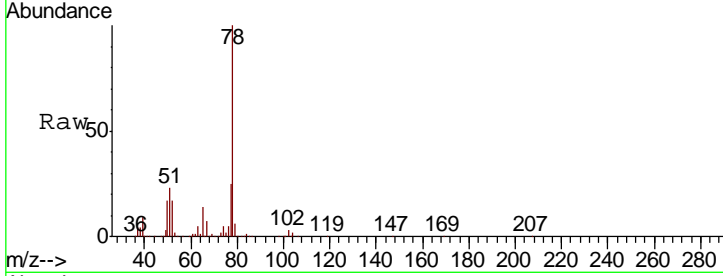
| Tgt Ion | Resp | Lower | Upper |
|---------|------|-------|-------|
| 43      | 3439 |       |       |
| 58      | 8.3  | 0.0   | 57.6  |





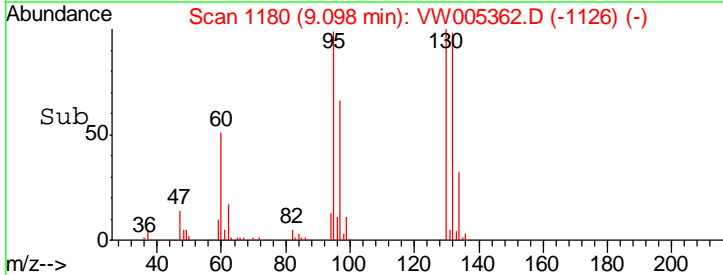
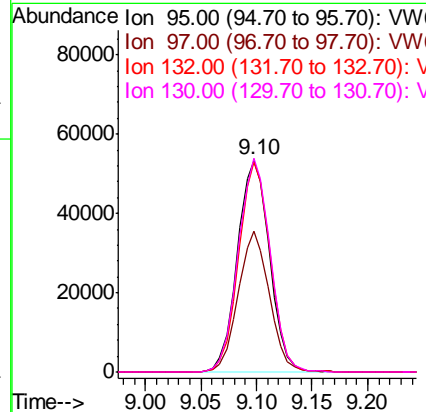
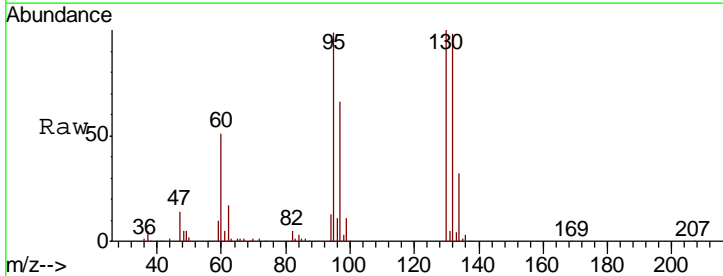
#34  
 Benzene  
 Concen: 24.74 ug/L  
 RT: 8.33 min Scan# 1054  
 Delta R.T. 0.00 min  
 Lab File: VW005362.D  
 Acq: 13 Sep 2018 21:11  
 Tgt Ion: 78 Resp: 425023

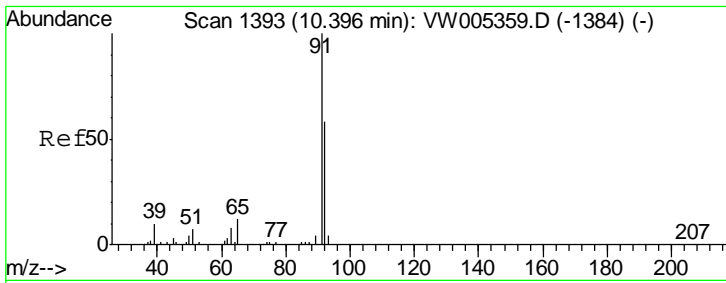
Instrument : MSVOA\_W  
 ClientSampled : H2TS2MS



#35  
 Trichloroethene  
 Concen: 23.36 ug/L  
 RT: 9.10 min Scan# 1180  
 Delta R.T. 0.00 min  
 Lab File: VW005362.D  
 Acq: 13 Sep 2018 21:11  
 Tgt Ion: 95 Resp: 106504

| Ion | Ratio | Lower | Upper |
|-----|-------|-------|-------|
| 95  | 100   |       |       |
| 97  | 64.6  | 45.0  | 83.6  |
| 132 | 97.6  | 67.2  | 124.8 |
| 130 | 100.6 | 68.8  | 127.8 |

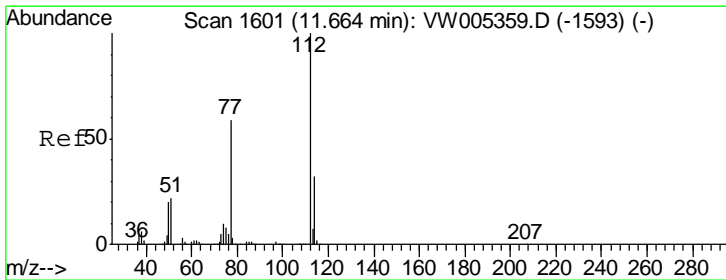
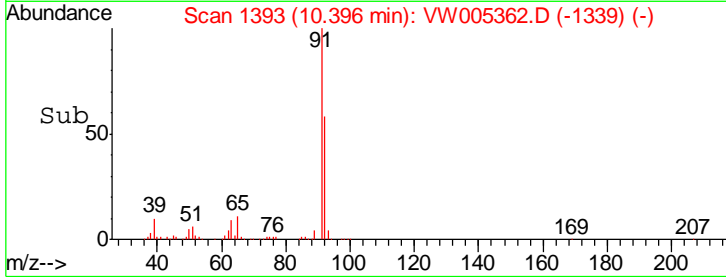
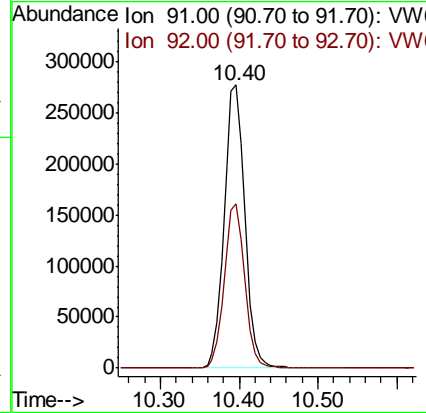
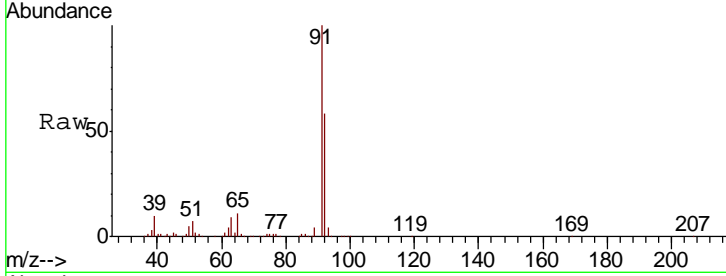




#44  
 Toluene  
 Concen: 25.64 ug/L  
 RT: 10.40 min Scan# 1393  
 Delta R.T. 0.00 min  
 Lab File: VW005362.D  
 Acq: 13 Sep 2018 21:11

Instrument :  
 MSVOA\_W  
 ClientSampled :  
 H2TS2MS

Tgt Ion: 91 Resp: 504599  
 Ion Ratio Lower Upper  
 91 100  
 92 57.8 39.8 74.0



#52  
 Chlorobenzene  
 Concen: 24.65 ug/L  
 RT: 11.66 min Scan# 1601  
 Delta R.T. 0.00 min  
 Lab File: VW005362.D  
 Acq: 13 Sep 2018 21:11

Tgt Ion: 112 Resp: 316601  
 Ion Ratio Lower Upper  
 112 100  
 77 60.0 45.1 67.7  
 114 32.7 22.5 41.7

