

Data Path : Z:\VOASRV\HPCHEM1\MSVOA\_W\DATA\VW091419\  
 Data File : VW012964.D  
 Acq On : 13 Sep 2019 20:33  
 Operator : SY/VA  
 Sample : K4719-02  
 Misc : 4.72G/5ML/MSVOA\_W/SOIL  
 ALS Vial : 17 Sample Multiplier: 1

Instrument :  
 MSVOA\_W  
 ClientSampleId :  
 T4-1-(0)-BRUCKNER

Integration Parameters: RTEINT.P  
 Integrator: RTE  
 Smoothing : ON Filtering: 5  
 Sampling : 1 Min Area: 3 % of largest Peak  
 Start Thrs: 0.2 Max Peaks: 100  
 Stop Thrs : 0 Peak Location: TOP

If leading or trailing edge < 100 prefer < Baseline drop else tangent >  
 Peak separation: 5

Method : Z:\VOASRV\HPCHEM1\MSVOA\_W\METHOD\82W091419S.M  
 Title : SW846 8260

Signal : TIC

peak #	R.T. min	first scan	max scan	last scan	PK TY	peak height	corr. area	corr. % max.	% of total
1	4.910	483	493	508	rVB3	19103	68018	5.85%	1.153%
2	7.141	851	859	868	rBV2	7992	25072	2.16%	0.425%
3	7.531	917	923	931	rBV4	5778	15503	1.33%	0.263%
4	7.885	970	981	985	rBV	154765	361896	31.12%	6.133%
5	7.946	985	991	1004	rVB	318435	715978	61.57%	12.133%
6	8.305	1040	1050	1061	rBV	160497	355218	30.55%	6.019%
7	8.842	1127	1138	1151	rBV	453787	902194	77.59%	15.288%
8	10.323	1372	1381	1391	rBV	656210	1162786	100.00%	19.704%
9	11.628	1587	1595	1605	rBV	547060	919570	79.08%	15.583%
10	12.615	1750	1757	1766	rBV	398243	647636	55.70%	10.975%
11	13.554	1905	1911	1920	rVV	412346	680058	58.49%	11.524%
12	14.073	1989	1996	2004	rBV2	11049	20137	1.73%	0.341%
13	14.524	2060	2070	2078	rVB5	6067	11637	1.00%	0.197%
14	14.725	2096	2103	2107	rBV2	9988	15465	1.33%	0.262%

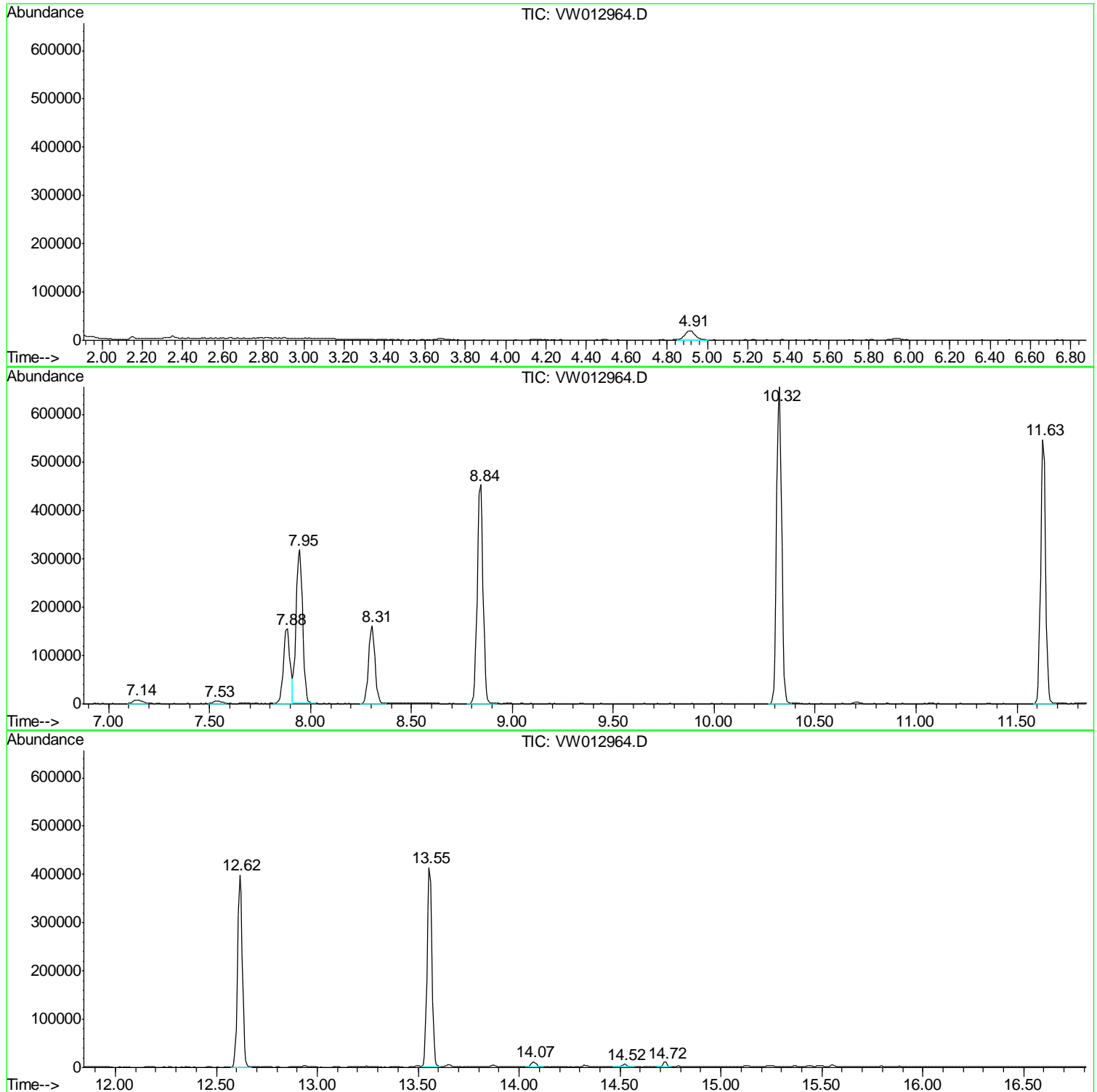
Sum of corrected areas: 5901168

Data Path : Z:\VOASRV\HPCHEM1\MSVOA\_W\DATA\VW091419\  
Data File : VW012964.D  
Acq On : 13 Sep 2019 20:33  
Operator : SY/VA  
Sample : K4719-02  
Misc : 4.72G/5ML/MSVOA\_W/SOIL  
ALS Vial : 17 Sample Multiplier: 1

Instrument :  
MSVOA\_W  
ClientSampleId :  
T4-1-(0)-BRUCKNER

Quant Method : Z:\VOASRV\HPCHEM1\MSVOA\_W\METHOD\82W091419S.M  
Quant Title : SW846 8260

TIC Library : C:\DATABASE\NIST11.L  
TIC Integration Parameters: LSCINT.P



Data Path : Z:\VOASRV\HPCHEM1\MSVOA\_W\DATA\VW091419\  
Data File : VW012964.D  
Acq On : 13 Sep 2019 20:33  
Operator : SY/VA  
Sample : K4719-02  
Misc : 4.72G/5ML/MSVOA\_W/SOIL  
ALS Vial : 17 Sample Multiplier: 1

Instrument :  
MSVOA\_W  
ClientSampleId :  
T4-1-(0)-BRUCKNER

Quant Method : Z:\VOASRV\HPCHEM1\MSVOA\_W\METHOD\82W091419S.M  
Quant Title : SW846 8260

TIC Library : C:\DATABASE\NIST11.L  
TIC Integration Parameters: LSCINT.P

No Library Search Compounds Detected

\*\*\*\*\*

Data Path : Z:\VOASRV\HPCHEM1\MSVOA\_W\DATA\VW091419\  
Data File : VW012964.D  
Acq On : 13 Sep 2019 20:33  
Operator : SY/VA  
Sample : K4719-02  
Misc : 4.72G/5ML/MSVOA\_W/SOIL  
ALS Vial : 17 Sample Multiplier: 1

Instrument :  
MSVOA\_W  
ClientSampleId :  
T4-1-(0)-BRUCKNER

Quant Method : Z:\VOASRV\HPCHEM1\MSVOA\_W\METHOD\82W091419S.M  
Quant Title : SW846 8260

TIC Library : C:\DATABASE\NIST11.L  
TIC Integration Parameters: LSCINT.P

TIC Top Hit name	RT	EstConc	Units	Response	--Internal Standard--			
					#	RT	Resp	Conc

---