

Data Path : Z:\VOASRV\HPCHEM1\MSVOA W\DATA\VW091519\
 Data File : VW013005.D
 Acq On : 14 Sep 2019 20:14
 Operator : SY/VA
 Sample : K4822-10
 Misc : 6.13G/5ML/MSVOA W/SOIL
 ALS Vial : 24 Sample Multiplier: 1

Instrument :
 MSVOA_W
 ClientSampleId :
 SB-3B-(9)

Integration Parameters: RTEINT.P

Integrator: RTE
 Smoothing : ON Filtering: 5
 Sampling : 1 Min Area: 3 % of largest Peak
 Start Thrs: 0.2 Max Peaks: 100
 Stop Thrs : 0 Peak Location: TOP

If leading or trailing edge < 100 prefer < Baseline drop else tangent >
 Peak separation: 5

Method : Z:\VOASRV\HPCHEM1\MSVOA_W\METHOD\82W091419S.M
 Title : SW846 8260

Signal : TIC

peak #	R.T. min	first scan	max scan	last scan	PK TY	peak height	corr. area	corr. % max.	% of total
1	1.958	4	9	20	rBV2	10895	23101	1.49%	0.241%
2	2.153	35	41	50	rBV3	19009	51737	3.33%	0.540%
3	2.349	63	73	80	rVB2	10672	22212	1.43%	0.232%
4	3.367	233	240	251	rVB2	7090	17264	1.11%	0.180%
5	4.147	356	368	384	rBV2	9557	34350	2.21%	0.358%
6	4.366	394	404	416	rBV2	6443	19331	1.24%	0.202%
7	4.909	481	493	498	rBV4	12887	43853	2.82%	0.457%
8	5.116	513	527	540	rBV2	42717	162221	10.43%	1.692%
9	5.927	649	660	671	rVB3	7436	22708	1.46%	0.237%
10	7.146	848	860	879	rBV	105024	336111	21.61%	3.506%
11	7.671	939	946	955	rVB2	8653	20219	1.30%	0.211%
12	7.884	969	981	985	rBV	178854	431202	27.72%	4.497%
13	7.945	985	991	1000	rVB	404529	884535	56.87%	9.226%
14	8.305	1041	1050	1061	rVB	191929	437991	28.16%	4.568%
15	8.841	1128	1138	1151	rBV	551820	1121474	72.11%	11.697%
16	9.323	1208	1217	1222	rBV6	7629	19081	1.23%	0.199%
17	10.121	1345	1348	1357	rVB2	9615	16371	1.05%	0.171%
18	10.323	1372	1381	1390	rBV	896681	1555329	100.00%	16.222%
19	10.847	1461	1467	1473	rVB	18358	30673	1.97%	0.320%
20	10.932	1473	1481	1487	rBV3	8440	17010	1.09%	0.177%
21	11.176	1516	1521	1525	rBV3	13401	20365	1.31%	0.212%
22	11.225	1525	1529	1535	rVB2	29595	49954	3.21%	0.521%
23	11.432	1560	1563	1571	rVB3	13279	24149	1.55%	0.252%
24	11.627	1588	1595	1605	rBV	730130	1245909	80.11%	12.995%
25	11.810	1621	1625	1631	rBV6	7090	16281	1.05%	0.170%
26	11.871	1631	1635	1639	rBV3	12984	25231	1.62%	0.263%
27	12.133	1670	1678	1687	rBV6	25851	79061	5.08%	0.825%
28	12.249	1694	1697	1701	rVB3	12529	17934	1.15%	0.187%
29	12.335	1707	1711	1712	rBV3	21381	24297	1.56%	0.253%
30	12.615	1751	1757	1764	rBV	584720	930904	59.85%	9.709%
31	12.694	1764	1770	1776	rBV6	10774	28435	1.83%	0.297%
32	12.773	1778	1783	1791	rVB3	48423	93377	6.00%	0.974%
33	12.859	1791	1797	1802	rBV7	16503	41061	2.64%	0.428%
34	12.938	1804	1810	1816	rBV8	25012	62697	4.03%	0.654%

Data Path : Z:\VOASRV\HPCHEM1\MSVOA W\DATA\VW091519\
 Data File : VW013005.D
 Acq On : 14 Sep 2019 20:14
 Operator : SY/VA
 Sample : K4822-10
 Misc : 6.13G/5ML/MSVOA W/SOIL
 ALS Vial : 24 Sample Multiplier: 1

Instrument :
 MSVOA_W
 ClientSampleId :
 SB-3B-(9)

Integration Parameters: RTEINT.P
 Integrator: RTE
 Smoothing : ON
 Sampling : 1
 Start Thrs: 0.2
 Stop Thrs : 0
 Filtering: 5
 Min Area: 3 % of largest Peak
 Max Peaks: 100
 Peak Location: TOP

If leading or trailing edge < 100 prefer < Baseline drop else tangent >
 Peak separation: 5

Method : Z:\VOASRV\HPCHEM1\MSVOA_W\METHOD\82W091419S.M
 Title : SW846 8260

35	13.078	1829	1833	1837	rBV5	15783	23061	1.48%	0.241%
36	13.176	1843	1849	1858	rVB8	15193	45142	2.90%	0.471%
37	13.261	1858	1863	1864	rBV4	10718	15573	1.00%	0.162%
38	13.432	1888	1891	1896	rVB6	13623	26093	1.68%	0.272%
39	13.554	1905	1911	1919	rVB	646540	1065226	68.49%	11.110%
40	13.645	1919	1926	1930	rBV3	21495	43665	2.81%	0.455%
41	13.694	1930	1934	1938	rVB4	17056	29201	1.88%	0.305%
42	13.877	1958	1964	1974	rBV4	51298	110017	7.07%	1.147%
43	14.072	1991	1996	2004	rVB	23863	46724	3.00%	0.487%
44	14.261	2022	2027	2032	rBV9	10279	20463	1.32%	0.213%
45	14.322	2034	2037	2042	rVB6	13947	20386	1.31%	0.213%
46	14.377	2042	2046	2050	rBV3	21376	35586	2.29%	0.371%
47	14.548	2066	2074	2079	rBV5	35381	83505	5.37%	0.871%
48	14.596	2079	2082	2087	rVB7	10378	18354	1.18%	0.191%
49	14.804	2110	2116	2120	rBV9	7101	16327	1.05%	0.170%
50	15.407	2208	2215	2219	rBV8	20333	42351	2.72%	0.442%
51	16.480	2388	2391	2399	rVB10	8381	19754	1.27%	0.206%

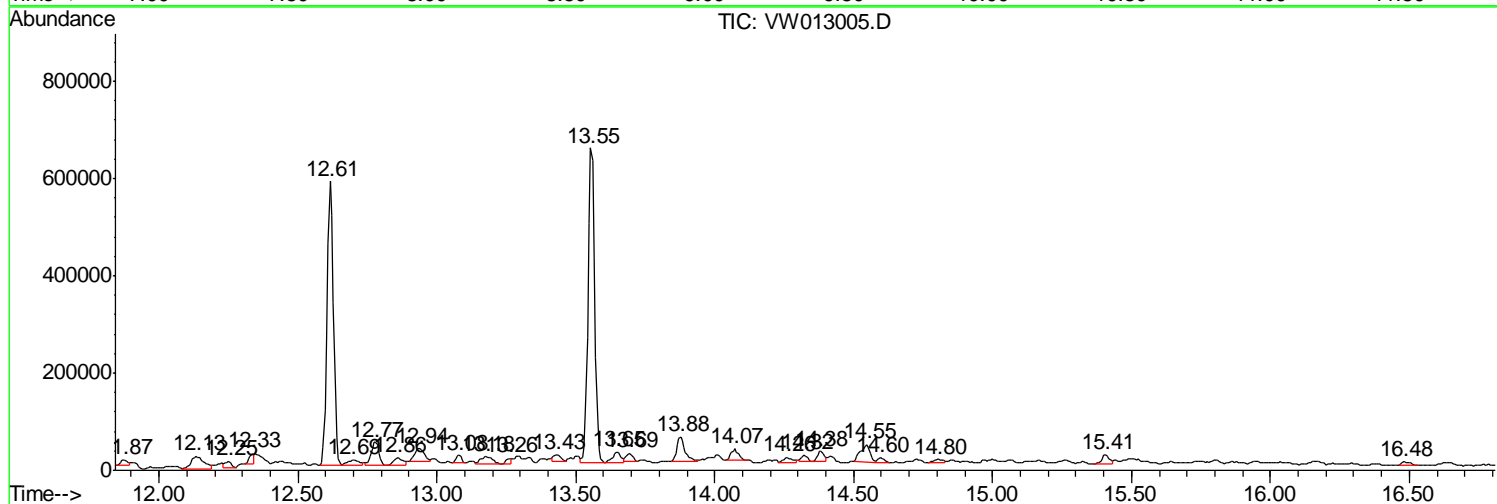
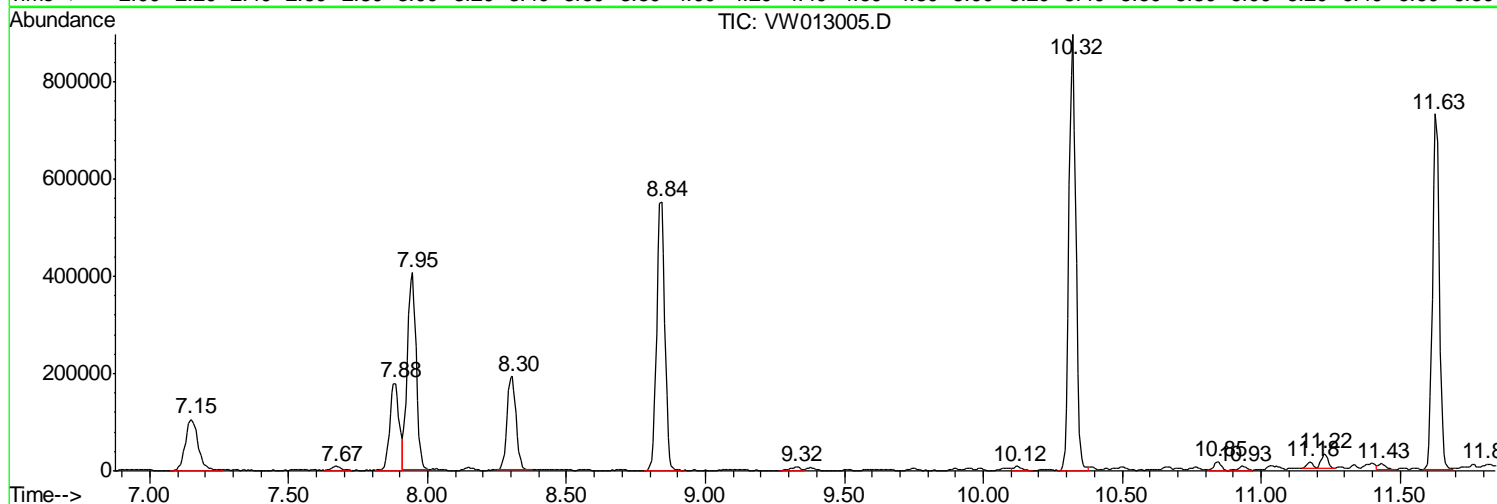
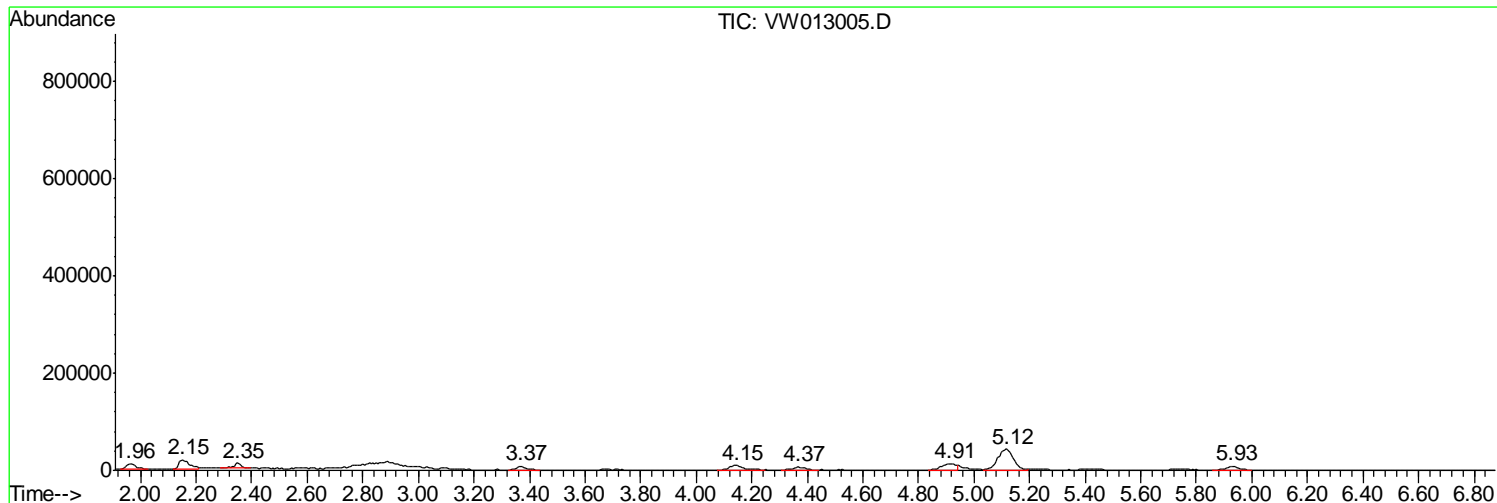
Sum of corrected areas: 9587856

Data Path : Z:\VOASRV\HPCHEM1\MSVOA W\DATA\VW091519\
 Data File : VW013005.D
 Acq On : 14 Sep 2019 20:14
 Operator : SY/VA
 Sample : K4822-10
 Misc : 6.13G/5ML/MSVOA W/SOIL
 ALS Vial : 24 Sample Multiplier: 1

Instrument :
 MSVOA_W
 ClientSampleId :
 SB-3B-(9)

Quant Method : Z:\VOASRV\HPCHEM1\MSVOA_W\METHOD\82W091419S.M
 Quant Title : SW846 8260

TIC Library : C:\DATABASE\NIST11.L
 TIC Integration Parameters: LSCINT.P



Data Path : Z:\VOASRV\HPCHEM1\MSVOA W\DATA\VW091519\
 Data File : VW013005.D
 Acq On : 14 Sep 2019 20:14
 Operator : SY/VA
 Sample : K4822-10
 Misc : 6.13G/5ML/MSVOA W/SOIL
 ALS Vial : 24 Sample Multiplier: 1

Instrument :
 MSVOA_W
 ClientSampled :
 SB-3B-(9)

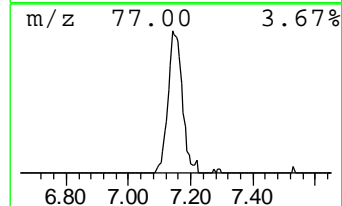
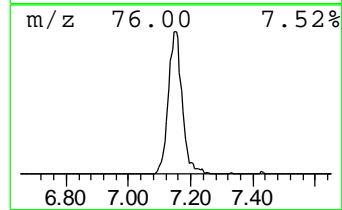
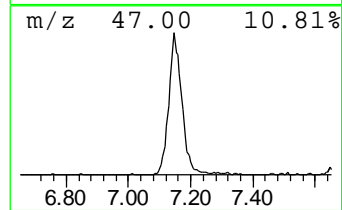
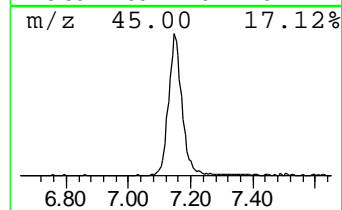
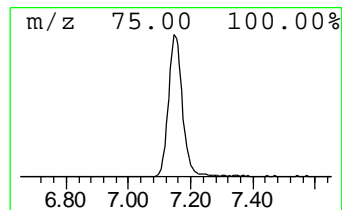
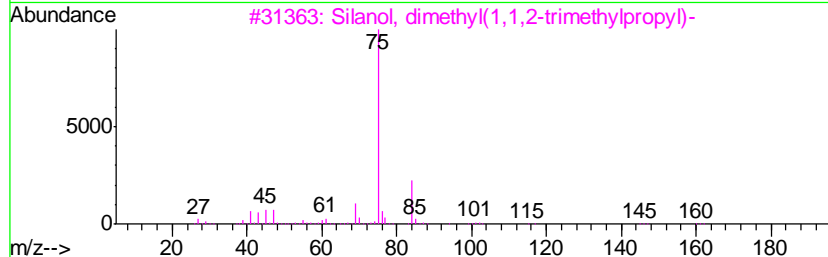
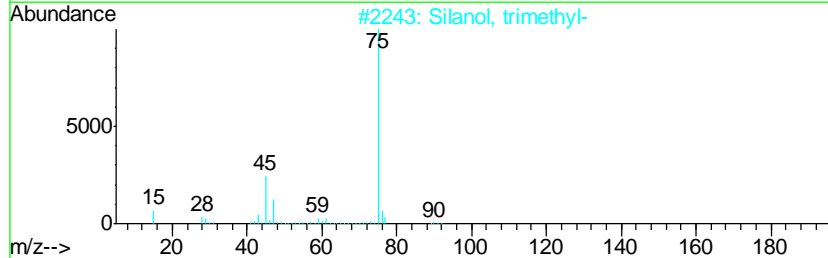
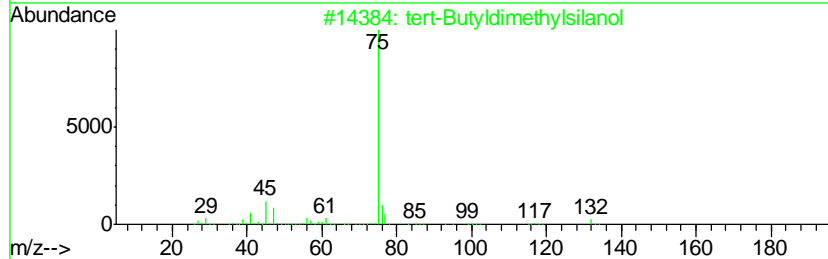
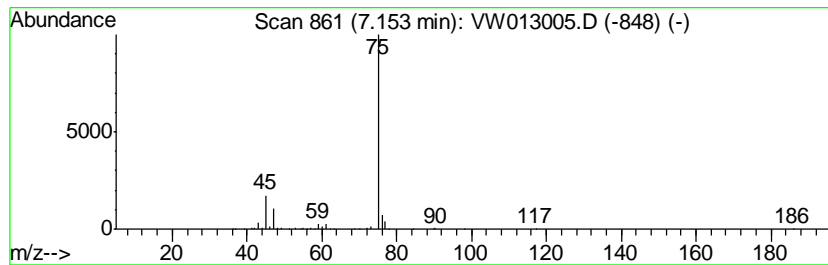
Quant Method : Z:\VOASRV\HPCHEM1\MSVOA_W\METHOD\82W091419S.M
 Quant Title : SW846 8260

TIC Library : C:\DATABASE\NIST11.L
 TIC Integration Parameters: LSCINT.P

 Peak Number 2 tert-Butyldimethylsilanol Concentration Rank 1

R.T.	EstConc	Area	Relative to ISTD	R.T.
7.15	19.00 ug/l	336111	Pentafluorobenzene	7.95

Hit#	of	Tentative ID	MW	MolForm	CAS#	Qual
1	5	tert-Butyldimethylsilanol	132	C6H16OSi	018173-64-3	83
2		Silanol, trimethyl-	90	C3H10OSi	001066-40-6	83
3		Silanol, dimethyl(1,1,2-trimethy...	160	C8H20OSi	055644-10-5	64
4		Formamide, N-methylthio	75	C2H5NS	018952-41-5	40
5		Ethanethioamide	75	C2H5NS	000062-55-5	9



Data Path : Z:\VOASRV\HPCHEM1\MSVOA W\DATA\VW091519\
 Data File : VW013005.D
 Acq On : 14 Sep 2019 20:14
 Operator : SY/VA
 Sample : K4822-10
 Misc : 6.13G/5ML/MSVOA W/SOIL
 ALS Vial : 24 Sample Multiplier: 1

Instrument :
 MSVOA_W
 ClientSampled :
 SB-3B-(9)

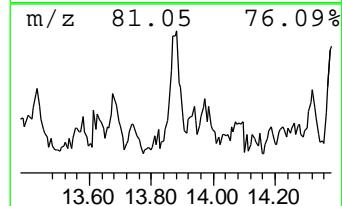
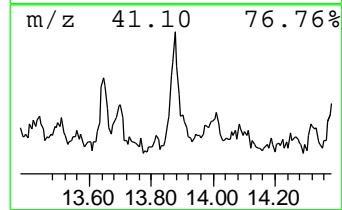
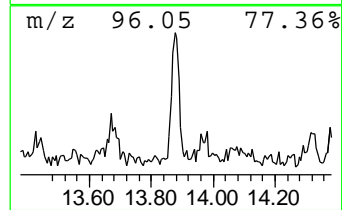
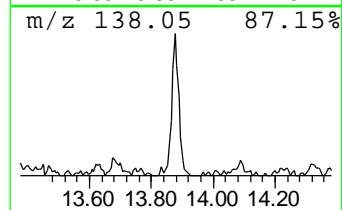
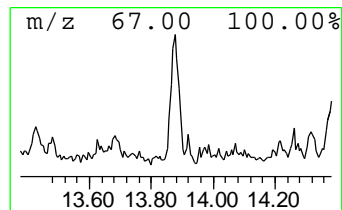
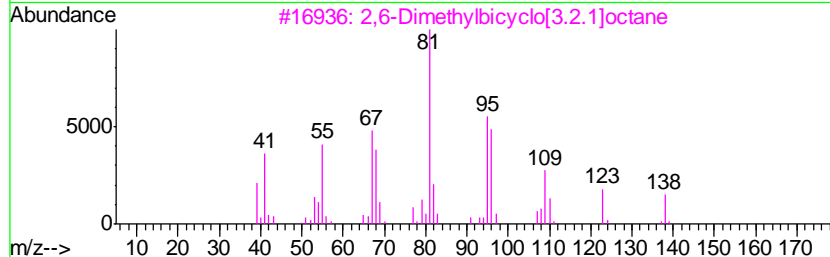
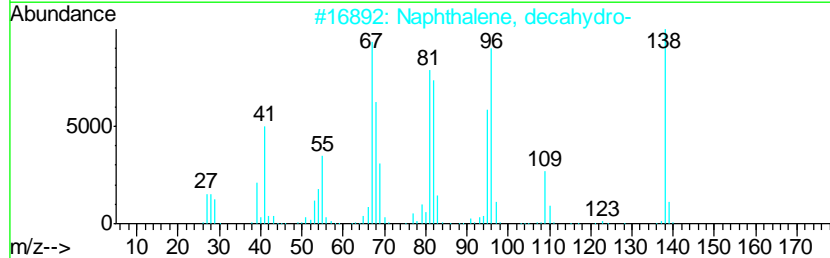
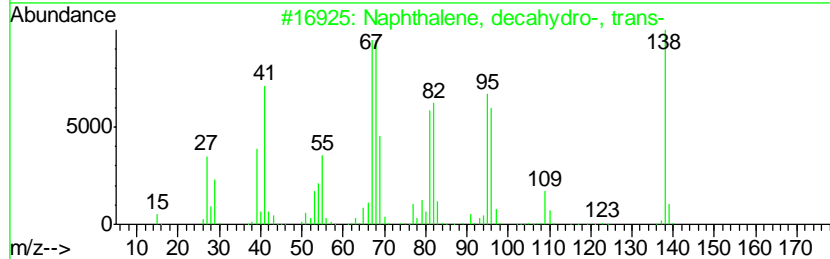
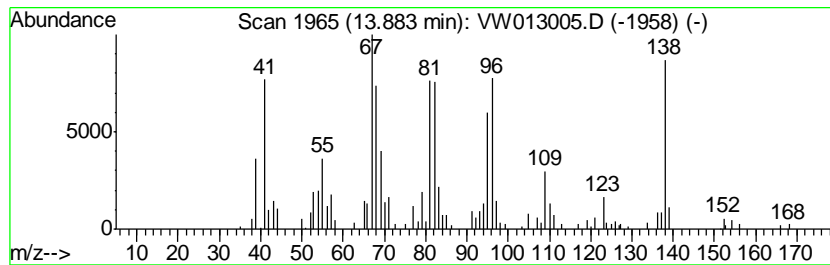
Quant Method : Z:\VOASRV\HPCHEM1\MSVOA_W\METHOD\82W091419S.M
 Quant Title : SW846 8260

TIC Library : C:\DATABASE\NIST11.L
 TIC Integration Parameters: LSCINT.P

 Peak Number 3 Naphthalene, decahydro-, tr... Concentration Rank 3

R.T.	EstConc	Area	Relative to ISTD	R.T.
13.88	5.16 ug/l	110017	1,4-Dichlorobenzene-d4	13.55

Hit#	of	Tentative ID	MW	MolForm	CAS#	Qual
1	5	Naphthalene, decahydro-, trans-	138	C10H18	000493-02-7	96
2		Naphthalene, decahydro-	138	C10H18	000091-17-8	93
3		2,6-Dimethylbicyclo[3.2.1]octane	138	C10H18	1000215-28-2	81
4		Naphthalene, decahydro-, cis-	138	C10H18	000493-01-6	81
5		Cyclodecene	138	C10H18	003618-12-0	81



Data Path : Z:\VOASRV\HPCHEM1\MSVOA_W\DATA\VW091519\
Data File : VW013005.D
Acq On : 14 Sep 2019 20:14
Operator : SY/VA
Sample : K4822-10
Misc : 6.13G/5ML/MSVOA_W/SOIL
ALS Vial : 24 Sample Multiplier: 1

Instrument :
MSVOA_W
ClientSampleId :
SB-3B-(9)

Quant Method : Z:\VOASRV\HPCHEM1\MSVOA_W\METHOD\82W091419S.M
Quant Title : SW846 8260

TIC Library : C:\DATABASE\NIST11.L
TIC Integration Parameters: LSCINT.P

TIC Top Hit name	RT	EstConc	Units	Response	--Internal Standard--			
					#	RT	Resp	Conc
tert-Butyldimethy...	7.15	19.0	ug/l	336111	1	7.95	884535	50.0
Naphthalene, deca...	13.88	5.2	ug/l	110017	4	13.55	1065230	50.0