

Data Path : Z:\VOASRV\HPCHEM1\MSVOA W\DATA\VW091618\  
 Data File : VW005412.D  
 Acq On : 15 Sep 2018 04:46  
 Operator : SY/AP  
 Sample : J4906-09  
 Misc : 5.95G/5ML/MSVOA W/SOIL  
 ALS Vial : 19 Sample Multiplier: 1

Instrument :  
 MSVOA\_W  
 ClientSampleId :  
 SP-PIT-7

Quant Time: Sep 15 06:19:57 2018  
 Quant Method : Z:\VOASRV\HPCHEM1\MSVOA\_W\METHOD\82W091618S.M  
 Quant Title : SW846 8260  
 QLast Update : Sat Sep 15 02:32:34 2018  
 Response via : Initial Calibration

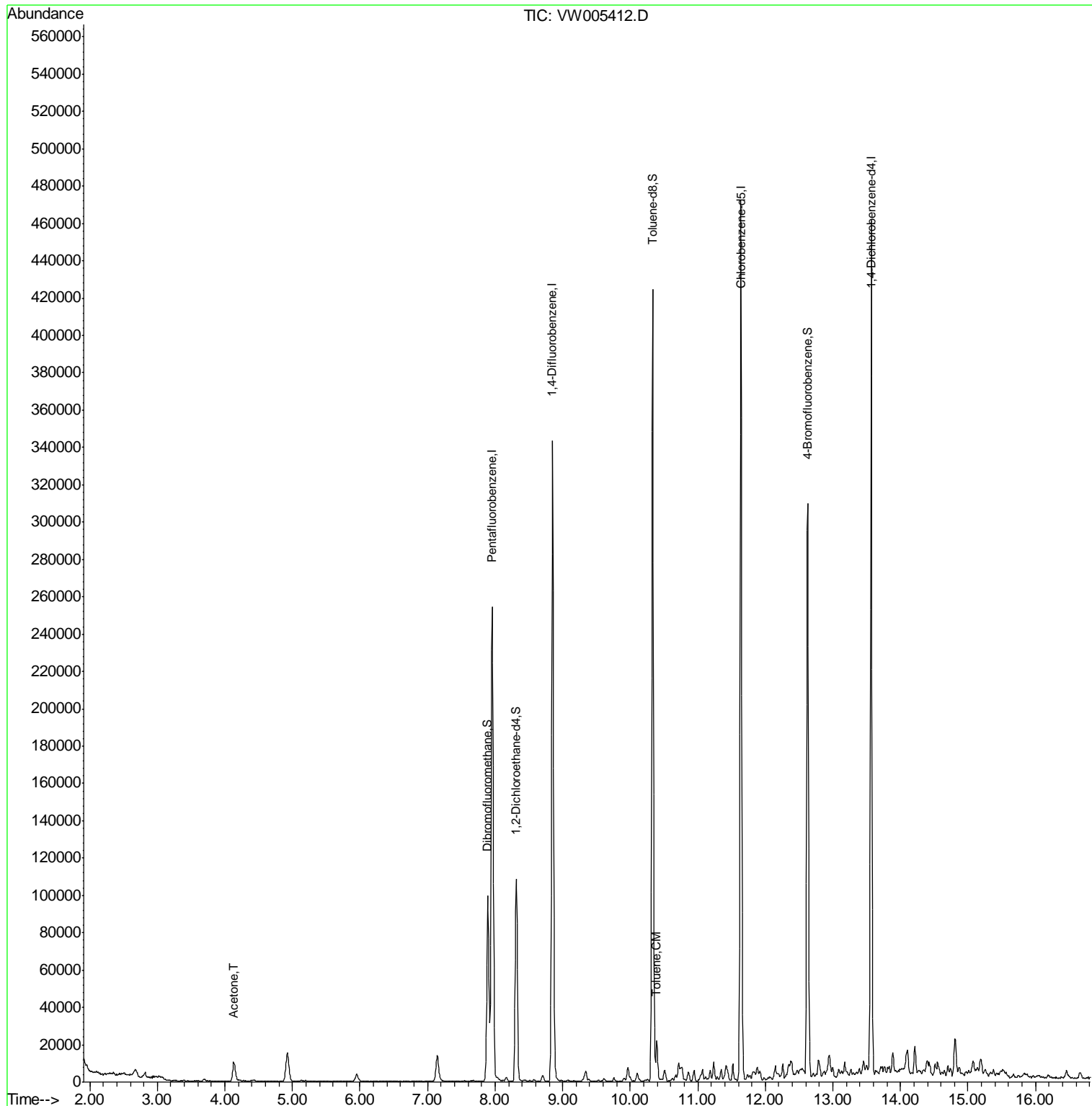
Internal Standards	R.T.	QIon	Response	Conc	Units	Dev(Min)
1) Pentafluorobenzene	7.96	168	186102	50.00	ug/l	0.00
34) 1,4-Difluorobenzene	8.85	114	287349	50.00	ug/l	0.00
63) Chlorobenzene-d5	11.64	117	269544	50.00	ug/l	0.00
72) 1,4-Dichlorobenzene-d4	13.57	152	115732	50.00	ug/l	0.00
System Monitoring Compounds						
33) 1,2-Dichloroethane-d4	8.31	65	90013	46.60	ug/l	0.00
Spiked Amount	50.000		Recovery	=	93.20%	
35) Dibromofluoromethane	7.89	113	67432	41.85	ug/l	0.00
Spiked Amount	50.000		Recovery	=	83.70%	
50) Toluene-d8	10.33	98	277883	37.66	ug/l	0.00
Spiked Amount	50.000		Recovery	=	75.32%	
62) 4-Bromofluorobenzene	12.63	95	95196	35.19	ug/l	0.00
Spiked Amount	50.000		Recovery	=	70.38%	
Target Compounds						
16) Acetone	4.14	43	18843	53.68	ug/l	93
52) Toluene	10.40	92	8187	1.53	ug/l	99

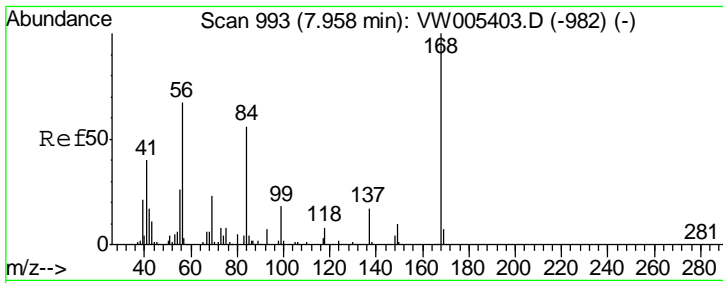
(#) = qualifier out of range (m) = manual integration (+) = signals summed

Data Path : Z:\VOASRV\HPCHEM1\MSVOA W\DATA\VW091618\  
 Data File : VW005412.D  
 Acq On : 15 Sep 2018 04:46  
 Operator : SY/AP  
 Sample : J4906-09  
 Misc : 5.95G/5ML/MSVOA W/SOIL  
 ALS Vial : 19 Sample Multiplier: 1

Instrument :  
 MSVOA\_W  
 ClientSampled :  
 SP-PIT-7

Quant Time: Sep 15 06:19:57 2018  
 Quant Method : Z:\VOASRV\HPCHEM1\MSVOA\_W\METHOD\82W091618S.M  
 Quant Title : SW846 8260  
 QLast Update : Sat Sep 15 02:32:34 2018  
 Response via : Initial Calibration

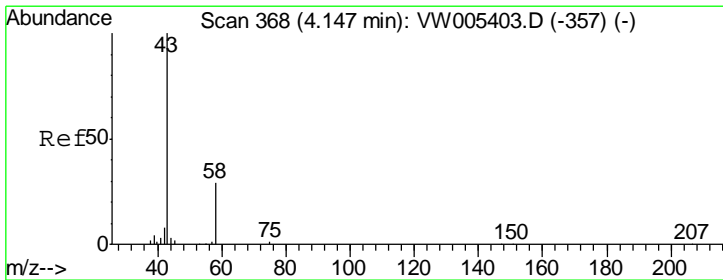
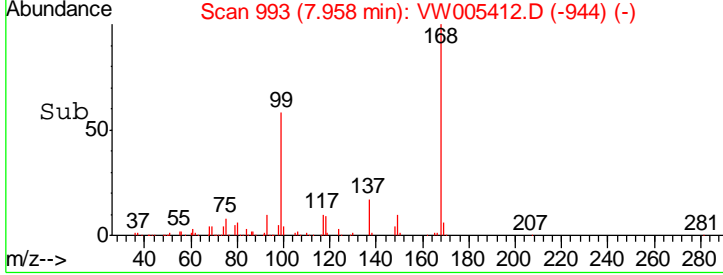
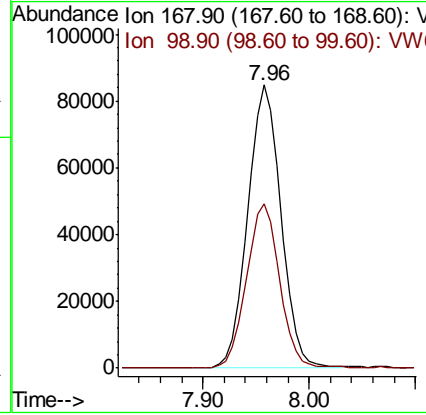
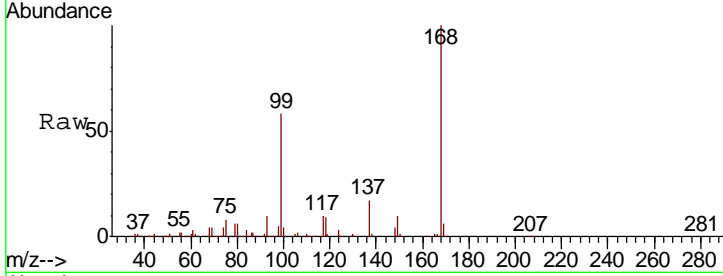




#1  
 Pentafluorobenzene  
 Concen: 50.00 ug/l  
 RT: 7.96 min Scan# 993  
 Delta R.T. -0.00 min  
 Lab File: VW005412.D  
 Acq: 15 Sep 2018 04:46

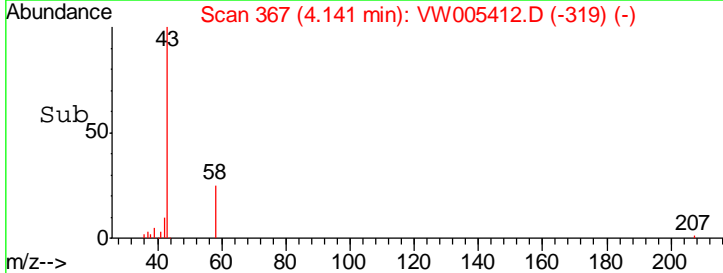
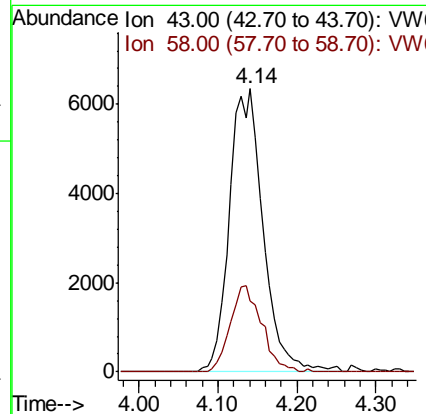
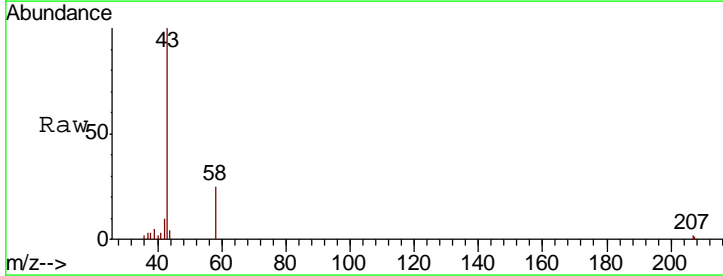
**Instrument :**  
 MSVOA\_W  
**ClientSampled :**  
 SP-PIT-7

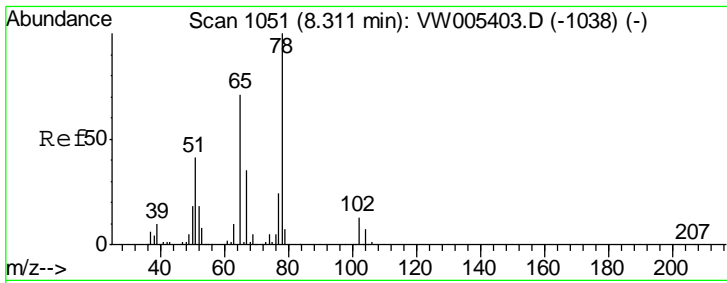
Tgt Ion	Resp	Lower	Upper
168	100		
99	57.9	45.0	67.6



#16  
 Acetone  
 Concen: 53.68 ug/l  
 RT: 4.14 min Scan# 367  
 Delta R.T. -0.01 min  
 Lab File: VW005412.D  
 Acq: 15 Sep 2018 04:46

Tgt Ion	Resp	Lower	Upper
43	100		
58	25.1	22.8	34.2

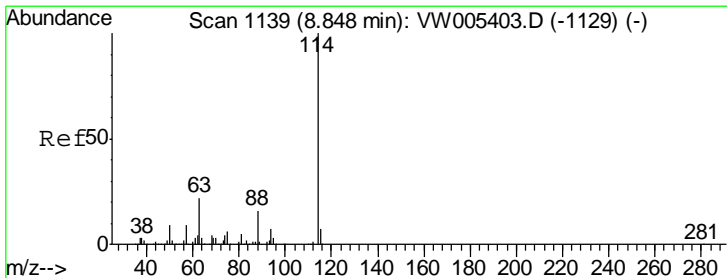
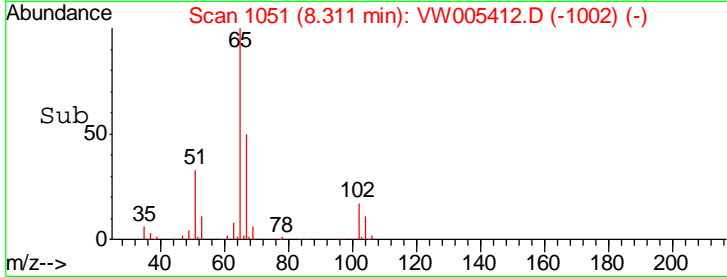
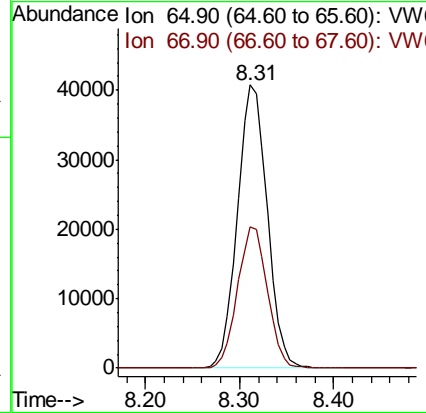
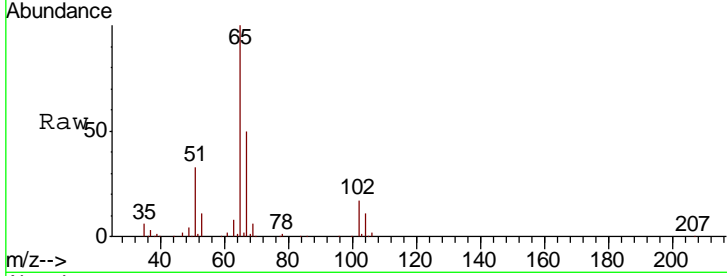




#33  
 1,2-Dichloroethane-d4  
 Concen: 46.60 ug/l  
 RT: 8.31 min Scan# 1051  
 Delta R.T. -0.00 min  
 Lab File: VW005412.D  
 Acq: 15 Sep 2018 04:46

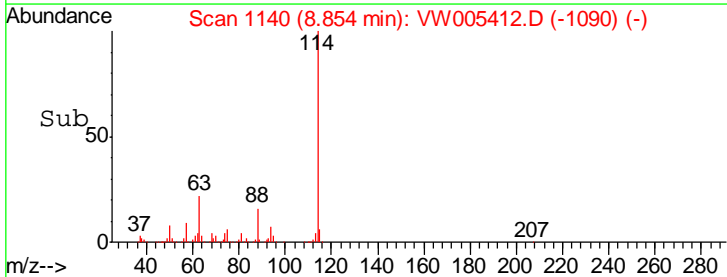
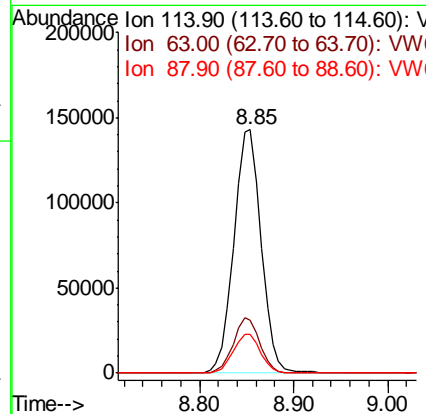
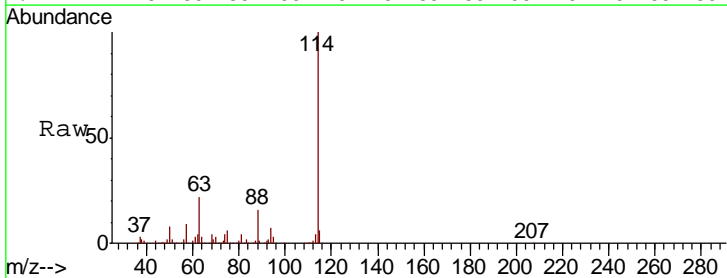
**Instrument :**  
 MSVOA\_W  
**ClientSampled :**  
 SP-PIT-7

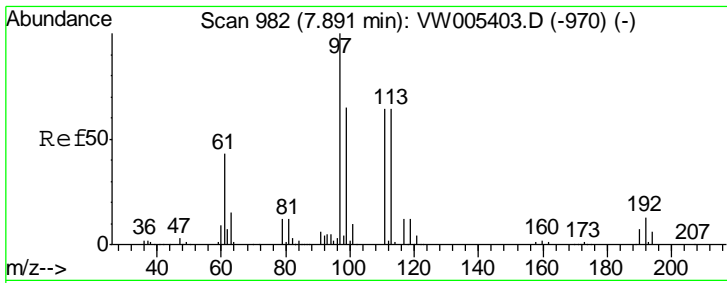
Tgt Ion	Resp	Lower	Upper
65	100		
67	50.2	0.0	100.6



#34  
 1,4-Difluorobenzene  
 Concen: 50.00 ug/l  
 RT: 8.85 min Scan# 1140  
 Delta R.T. 0.01 min  
 Lab File: VW005412.D  
 Acq: 15 Sep 2018 04:46

Tgt Ion	Resp	Lower	Upper
114	100		
63	21.6	0.0	43.4
88	16.1	0.0	31.8

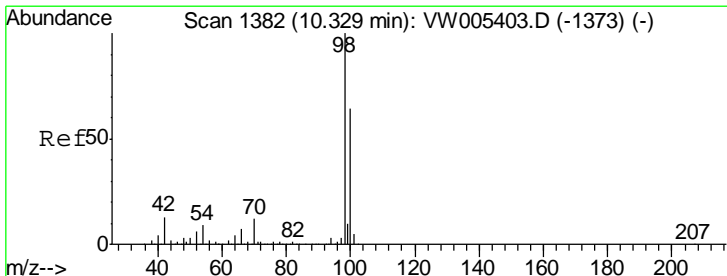
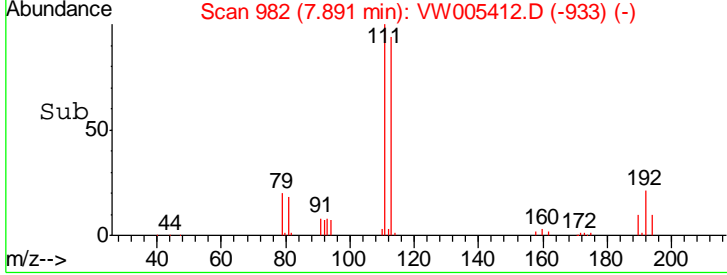
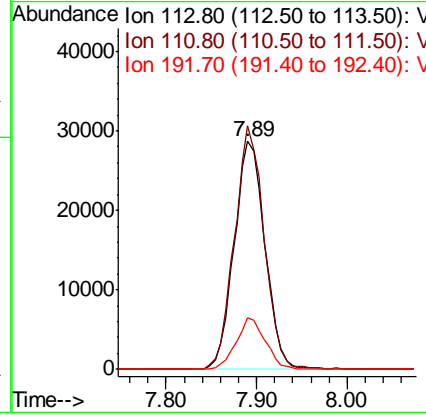
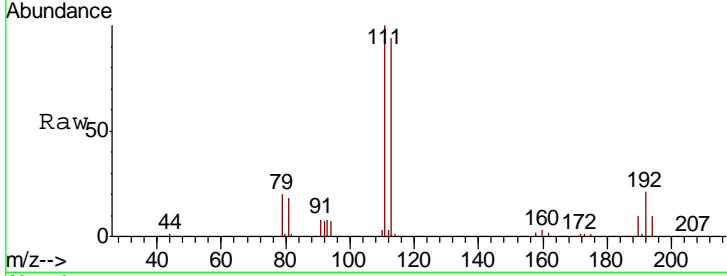




#35  
 Dibromofluoromethane  
 Concen: 41.85 ug/l  
 RT: 7.89 min Scan# 982  
 Delta R.T. -0.00 min  
 Lab File: VW005412.D  
 Acq: 15 Sep 2018 04:46

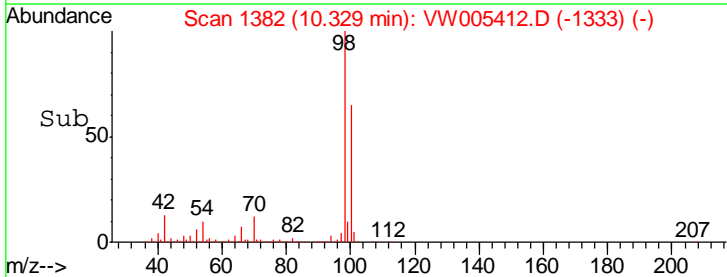
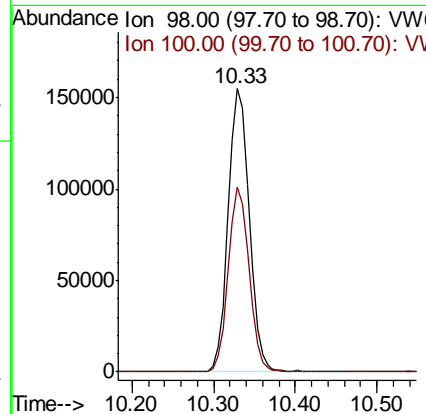
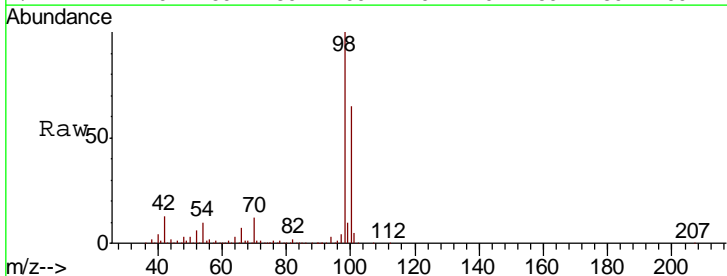
**Instrument :**  
 MSVOA\_W  
**ClientSampled :**  
 SP-PIT-7

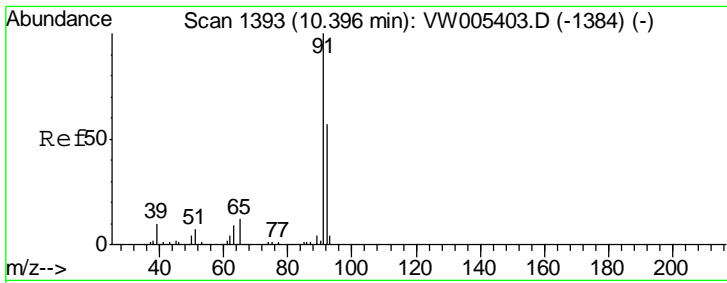
Tgt Ion	Resp	Lower	Upper
113	67432		
111	103.7	82.3	123.5
192	21.3	16.5	24.7



#50  
 Toluene-d8  
 Concen: 37.66 ug/l  
 RT: 10.33 min Scan# 1382  
 Delta R.T. -0.00 min  
 Lab File: VW005412.D  
 Acq: 15 Sep 2018 04:46

Tgt Ion	Resp	Lower	Upper
98	277883		
100	64.3	51.4	77.0

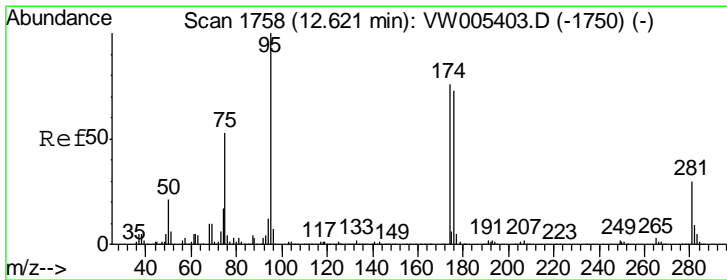
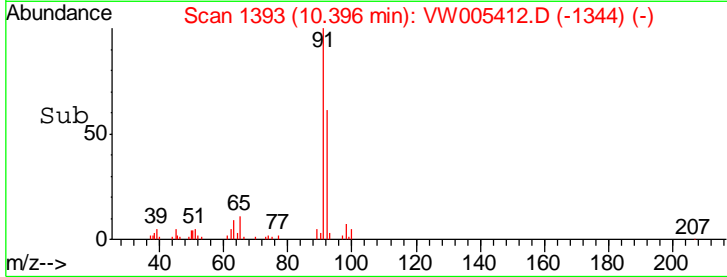
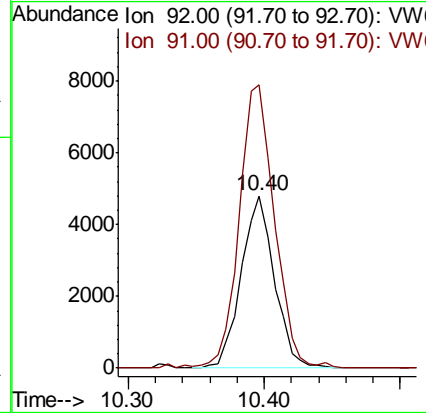
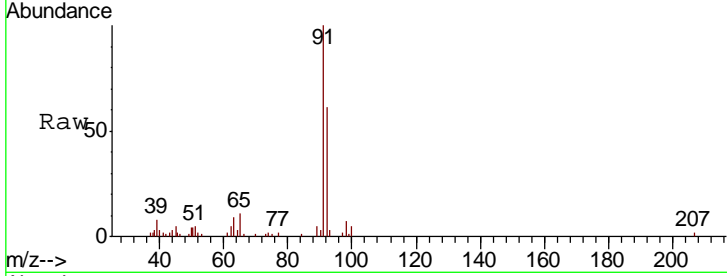




#52  
 Toluene  
 Concen: 1.53 ug/l  
 RT: 10.40 min Scan# 1393  
 Delta R.T. -0.00 min  
 Lab File: VW005412.D  
 Acq: 15 Sep 2018 04:46

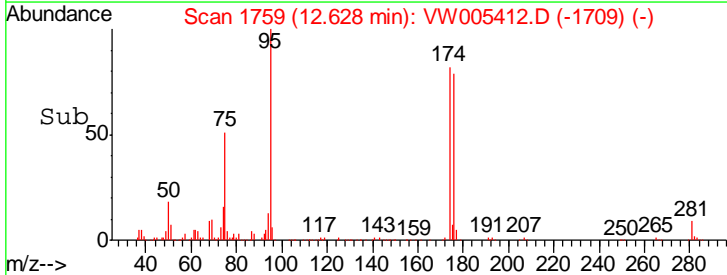
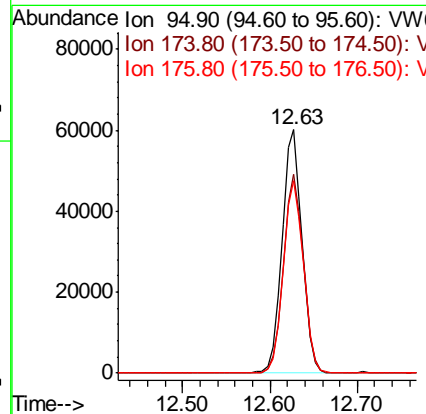
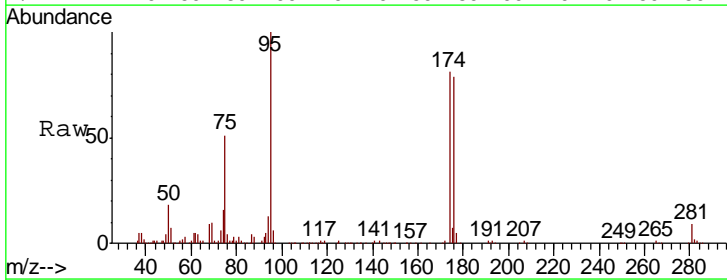
Instrument :  
 MSVOA\_W  
 ClientSampled :  
 SP-PIT-7

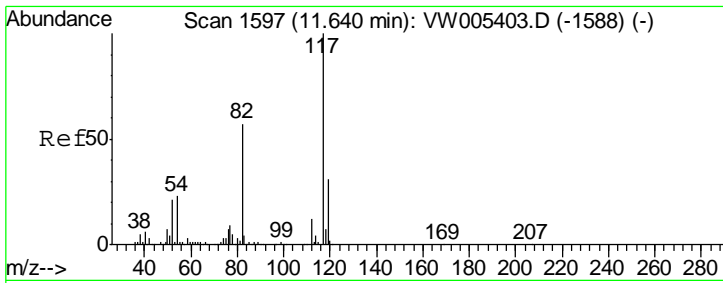
Tgt Ion: 92 Resp: 8187  
 Ion Ratio Lower Upper  
 92 100  
 91 174.7 139.1 208.7



#62  
 4-Bromofluorobenzene  
 Concen: 35.19 ug/l  
 RT: 12.63 min Scan# 1759  
 Delta R.T. 0.01 min  
 Lab File: VW005412.D  
 Acq: 15 Sep 2018 04:46

Tgt Ion: 95 Resp: 95196  
 Ion Ratio Lower Upper  
 95 100  
 174 81.3 0.0 161.2  
 176 79.6 0.0 156.6

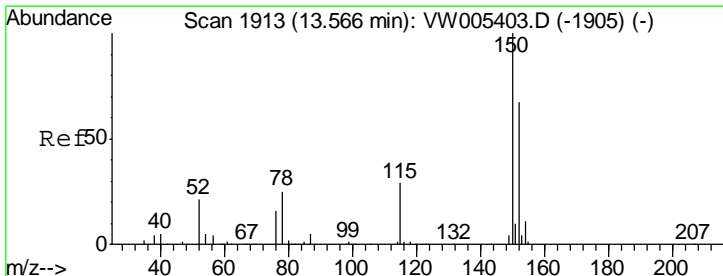
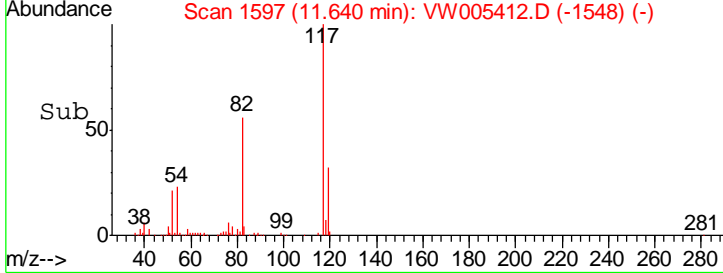
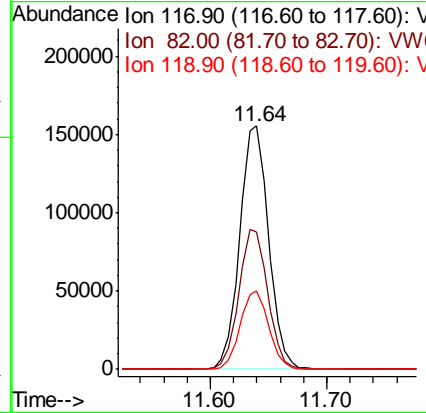
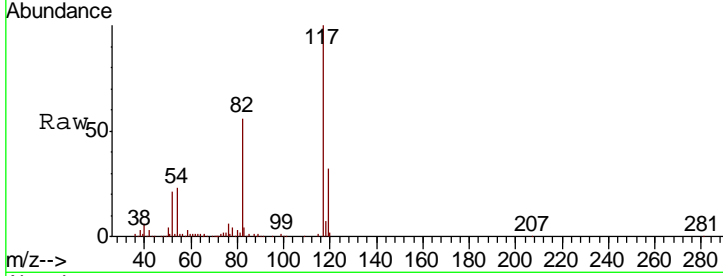




#63  
 Chlorobenzene-d5  
 Concen: 50.00 ug/l  
 RT: 11.64 min Scan# 1597  
 Delta R.T. -0.00 min  
 Lab File: VW005412.D  
 Acq: 15 Sep 2018 04:46

Instrument : MSVOA\_W  
 ClientSampled : SP-PIT-7

Tgt Ion	Resp	Lower	Upper
117	269544		
82	56.3	45.9	68.9
119	32.2	24.8	37.2



#72  
 1,4-Dichlorobenzene-d4  
 Concen: 50.00 ug/l  
 RT: 13.57 min Scan# 1913  
 Delta R.T. -0.00 min  
 Lab File: VW005412.D  
 Acq: 15 Sep 2018 04:46

Tgt Ion	Resp	Lower	Upper
152	115732		
115	59.2	29.5	88.5
150	158.2	0.0	345.6

