

Data Path : Z:\VOASRV\HPCHEM1\MSVOA W\DATA\VW091719\
 Data File : VW013100.D
 Acq On : 17 Sep 2019 19:30
 Operator : SY/VA
 Sample : K4847-07
 Misc : 4.99G/5ML/MSVOA W/SOIL
 ALS Vial : 24 Sample Multiplier: 1

Instrument :
 MSVOA_W
 ClientSampled :
 SB-34-13.5-14.0

Integration Parameters: RTEINT.P

Integrator: RTE
 Smoothing : ON
 Sampling : 1
 Start Thrs: 0.2
 Stop Thrs : 0

Filtering: 5
 Min Area: 3 % of largest Peak
 Max Peaks: 100
 Peak Location: TOP

If leading or trailing edge < 100 prefer < Baseline drop else tangent >
 Peak separation: 5

Method : Z:\VOASRV\HPCHEM1\MSVOA_W\METHOD\82W091419S.M
 Title : SW846 8260

Signal : TIC

peak #	R.T. min	first scan	max scan	last scan	PK TY	peak height	corr. area	corr. % max.	% of total
1	2.154	35	41	48	rBV	12921	22071	6.60%	1.028%
2	2.642	111	121	128	rBV8	10182	23413	7.00%	1.091%
3	3.117	197	199	207	rVB6	3254	6298	1.88%	0.293%
4	3.391	237	244	252	rVB6	1870	4143	1.24%	0.193%
5	4.909	484	493	502	rBV7	3256	11131	3.33%	0.518%
6	5.940	653	662	670	rVB4	3389	9401	2.81%	0.438%
7	7.135	848	858	870	rVB	35666	94419	28.24%	4.398%
8	7.884	972	981	985	rBV2	43215	101973	30.50%	4.750%
9	7.945	985	991	1002	rVB2	92394	212885	63.67%	9.916%
10	8.250	1033	1041	1045	rBV2	14104	34982	10.46%	1.629%
11	8.305	1045	1050	1061	rVB2	45113	102658	30.71%	4.782%
12	8.842	1130	1138	1146	rBV	127628	252006	75.38%	11.738%
13	10.323	1374	1381	1393	rBV2	191058	334333	100.00%	15.573%
14	10.701	1436	1443	1451	rBV	42709	75349	22.54%	3.510%
15	11.061	1495	1502	1508	rBV	25064	40618	12.15%	1.892%
16	11.183	1516	1522	1525	rVB6	2380	3506	1.05%	0.163%
17	11.439	1559	1564	1570	rVB2	12105	19836	5.93%	0.924%
18	11.628	1588	1595	1605	rBV	163585	278431	83.28%	12.969%
19	11.847	1625	1631	1638	rBV7	2761	7198	2.15%	0.335%
20	12.615	1748	1757	1768	rVB2	140401	248702	74.39%	11.584%
21	12.932	1802	1809	1814	rBV4	8574	14456	4.32%	0.673%
22	13.292	1865	1868	1875	rVB4	3188	6088	1.82%	0.284%
23	13.408	1881	1887	1890	rBV4	2101	3489	1.04%	0.163%
24	13.560	1904	1912	1918	rBV	124350	207561	62.08%	9.668%
25	13.871	1958	1963	1968	rBV5	2734	5691	1.70%	0.265%
26	14.072	1991	1996	2004	rVB	6757	11667	3.49%	0.543%
27	14.335	2034	2039	2041	rBV3	2297	3575	1.07%	0.167%
28	15.438	2213	2220	2224	rBV3	6186	11013	3.29%	0.513%

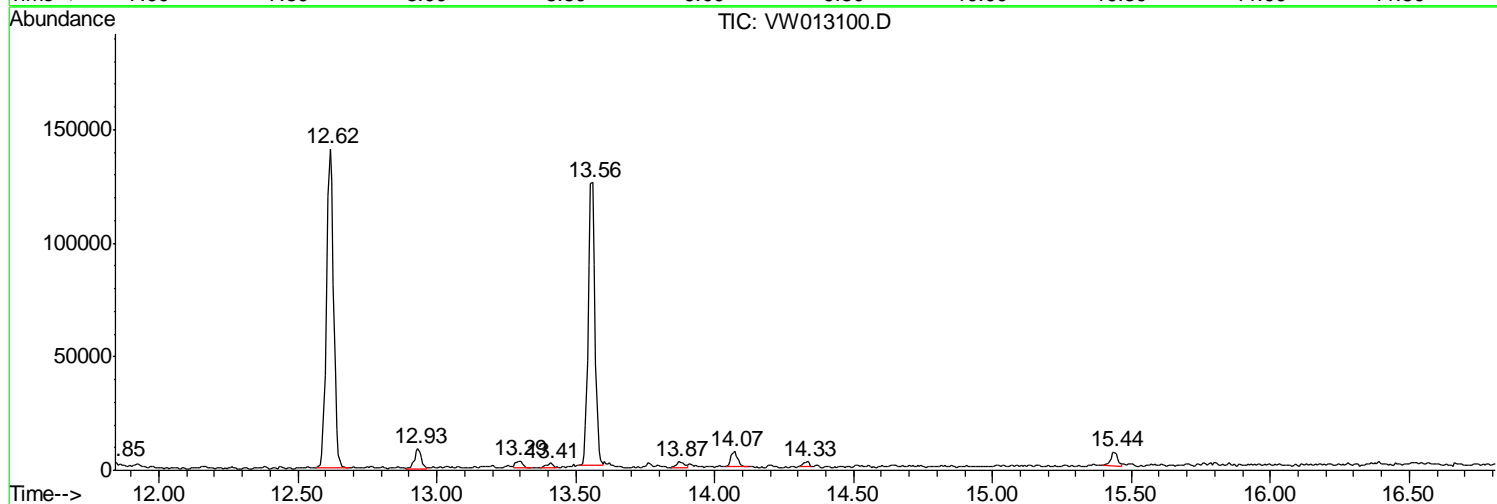
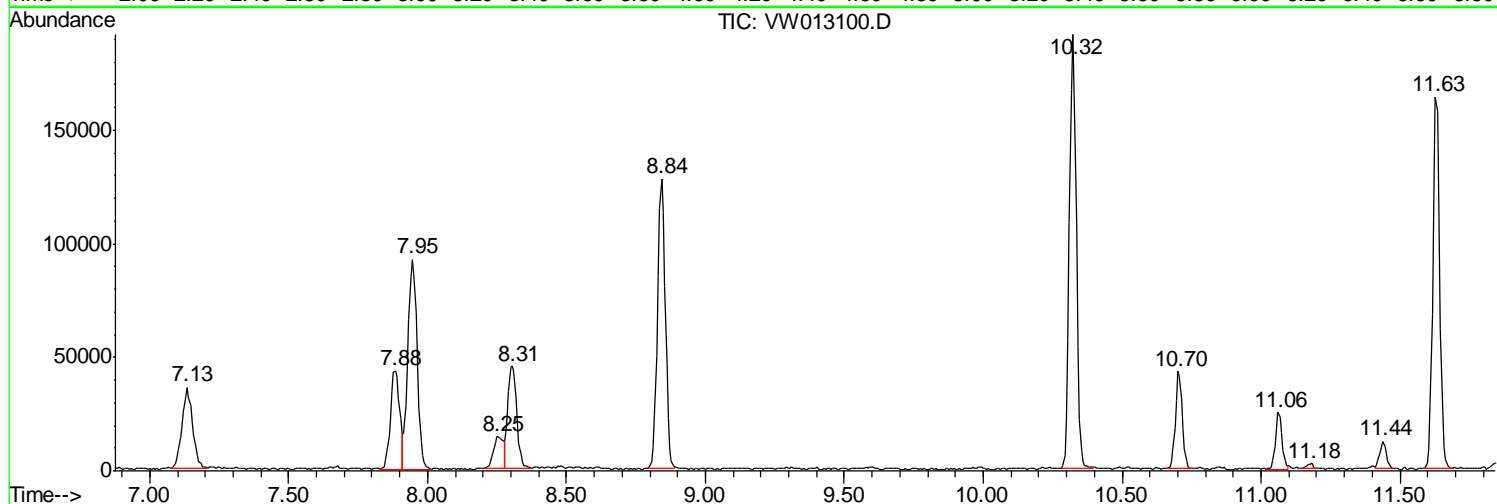
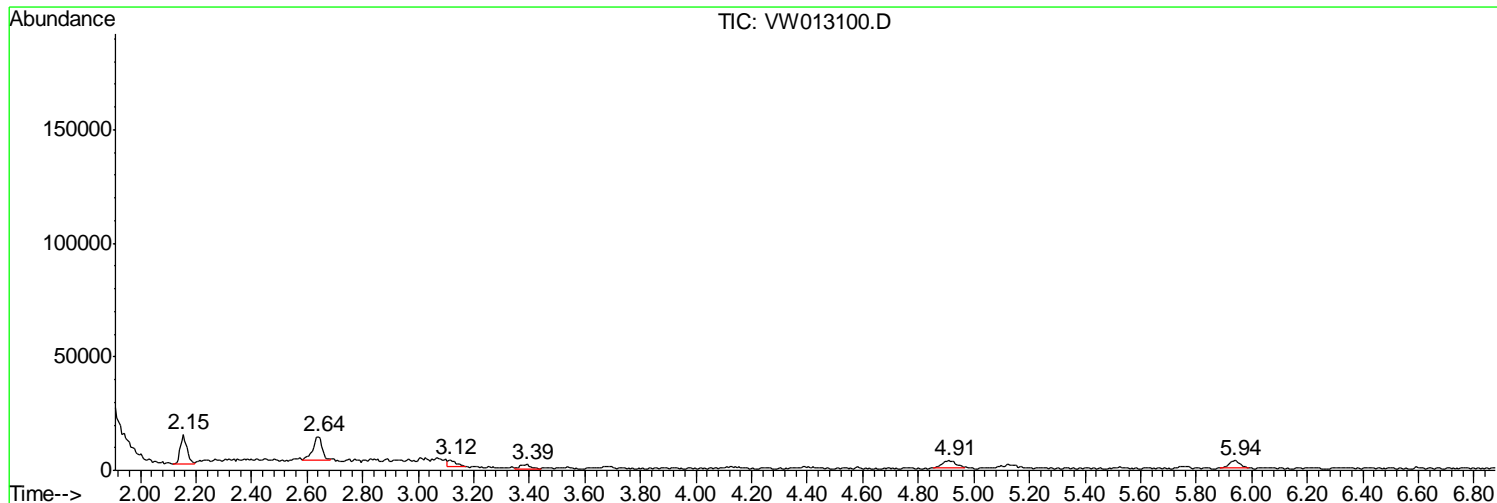
Sum of corrected areas: 2146893

Data Path : Z:\VOASRV\HPCHEM1\MSVOA W\DATA\VW091719\
 Data File : VW013100.D
 Acq On : 17 Sep 2019 19:30
 Operator : SY/VA
 Sample : K4847-07
 Misc : 4.99G/5ML/MSVOA W/SOIL
 ALS Vial : 24 Sample Multiplier: 1

Instrument :
 MSVOA_W
 ClientSampleId :
 SB-34-13.5-14.0

Quant Method : Z:\VOASRV\HPCHEM1\MSVOA_W\METHOD\82W091419S.M
 Quant Title : SW846 8260

TIC Library : C:\DATABASE\NIST11.L
 TIC Integration Parameters: LSCINT.P



Data Path : Z:\VOASRV\HPCHEM1\MSVOA W\DATA\VW091719\
 Data File : VW013100.D
 Acq On : 17 Sep 2019 19:30
 Operator : SY/VA
 Sample : K4847-07
 Misc : 4.99G/5ML/MSVOA W/SOIL
 ALS Vial : 24 Sample Multiplier: 1

Instrument :
 MSVOA_W
 ClientSampled :
 SB-34-13.5-14.0

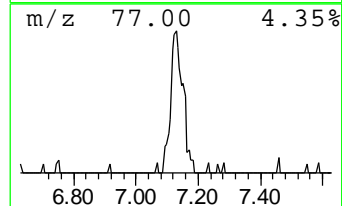
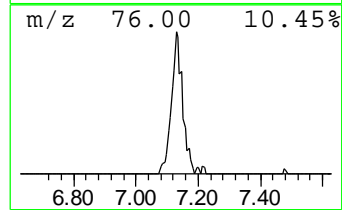
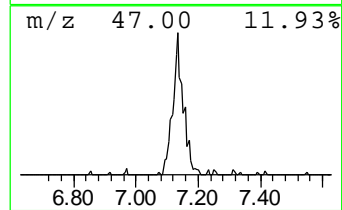
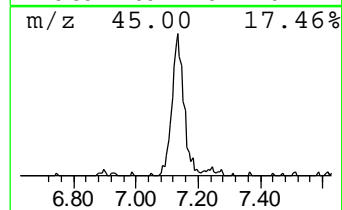
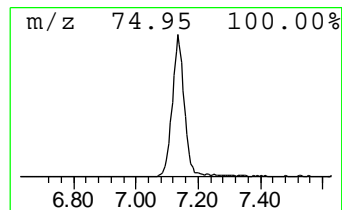
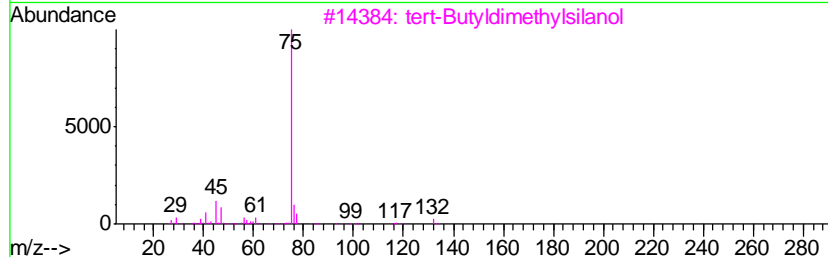
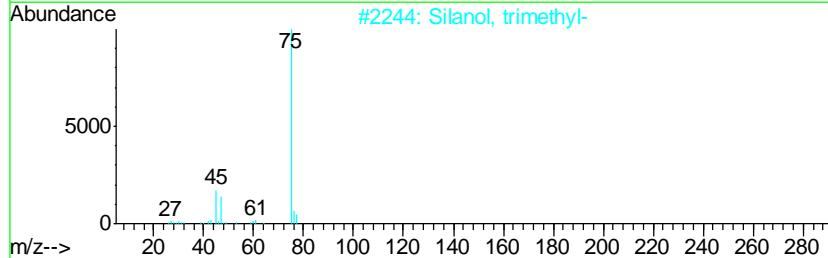
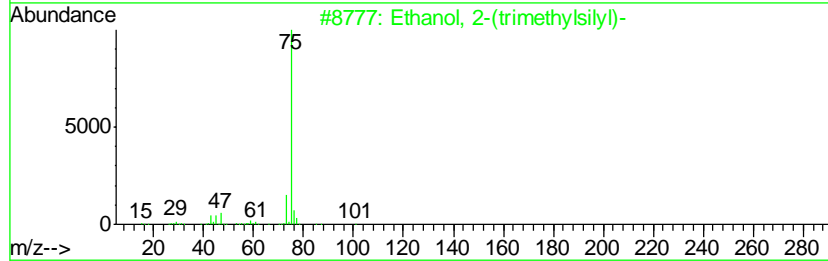
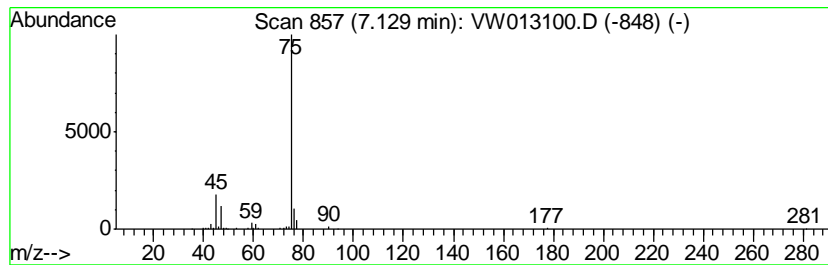
Quant Method : Z:\VOASRV\HPCHEM1\MSVOA_W\METHOD\82W091419S.M
 Quant Title : SW846 8260

TIC Library : C:\DATABASE\NIST11.L
 TIC Integration Parameters: LSCINT.P

 Peak Number 3 Ethanol, 2-(trimethylsilyl)- Concentration Rank 1

R.T.	EstConc	Area	Relative to ISTD	R.T.
7.13	22.18 ug/l	94419	Pentafluorobenzene	7.95

Hit#	of	Tentative ID	MW	MolForm	CAS#	Qual
1	5	Ethanol, 2-(trimethylsilyl)-	118	C5H14OSi	002916-68-9	78
2		Silanol, trimethyl-	90	C3H10OSi	001066-40-6	78
3		tert-Butyldimethylsilanol	132	C6H16OSi	018173-64-3	74
4		Silane, trimethyl(1-methylethoxy)-	132	C6H16OSi	001825-64-5	64
5		Silanol, trimethyl-, acetate	132	C5H12O2Si	002754-27-0	64



Data Path : Z:\VOASRV\HPCHEM1\MSVOA_W\DATA\VW091719\
Data File : VW013100.D
Acq On : 17 Sep 2019 19:30
Operator : SY/VA
Sample : K4847-07
Misc : 4.99G/5ML/MSVOA_W/SOIL
ALS Vial : 24 Sample Multiplier: 1

Instrument :
MSVOA_W
ClientSampleId :
SB-34-13.5-14.0

Quant Method : Z:\VOASRV\HPCHEM1\MSVOA_W\METHOD\82W091419S.M
Quant Title : SW846 8260

TIC Library : C:\DATABASE\NIST11.L
TIC Integration Parameters: LSCINT.P

TIC Top Hit name	RT	EstConc	Units	Response	--Internal Standard--			
					#	RT	Resp	Conc
Ethanol, 2-(trime...	7.13	22.2	ug/l	94419	1	7.95	212885	50.0