

Data File : VW013136.D
 Acq On : 19 Sep 2019 02:49
 Operator : SY/VA
 Sample : K4924-07
 Misc : 4.98G/5ML/MSVOA_W/SOIL
 ALS Vial : 37 Sample Multiplier: 1

Instrument :
 MSVOA_W
 ClientSampleId :
 SB-50-14.5-15.0

Quant Time: Sep 19 08:03:36 2019
 Quant Method : Z:\VOASRV\HPCHEM1\MSVOA_W\METHOD\82W091419S.M
 Quant Title : SW846 8260
 QLast Update : Fri Sep 13 17:26:01 2019
 Response via : Initial Calibration

Internal Standards	R.T.	QIon	Response	Conc	Units	Dev(Min)
1) Pentafluorobenzene	7.95	168	396992	50.00	ug/l	0.00
34) 1,4-Difluorobenzene	8.84	114	589161	50.00	ug/l	0.00
63) Chlorobenzene-d5	11.63	117	479657	50.00	ug/l	0.00
72) 1,4-Dichlorobenzene-d4	13.56	152	203708	50.00	ug/l	0.00

System Monitoring Compounds

33) 1,2-Dichloroethane-d4	8.30	65	154407	42.11	ug/l	0.00
Spiked Amount	50.000		Recovery	=	84.22%	
35) Dibromofluoromethane	7.88	113	161243	50.44	ug/l	0.00
Spiked Amount	50.000		Recovery	=	100.88%	
50) Toluene-d8	10.32	98	677406	54.15	ug/l	0.00
Spiked Amount	50.000		Recovery	=	108.30%	
62) 4-Bromofluorobenzene	12.61	95	204870	45.54	ug/l	0.00
Spiked Amount	50.000		Recovery	=	91.08%	

Target Compounds

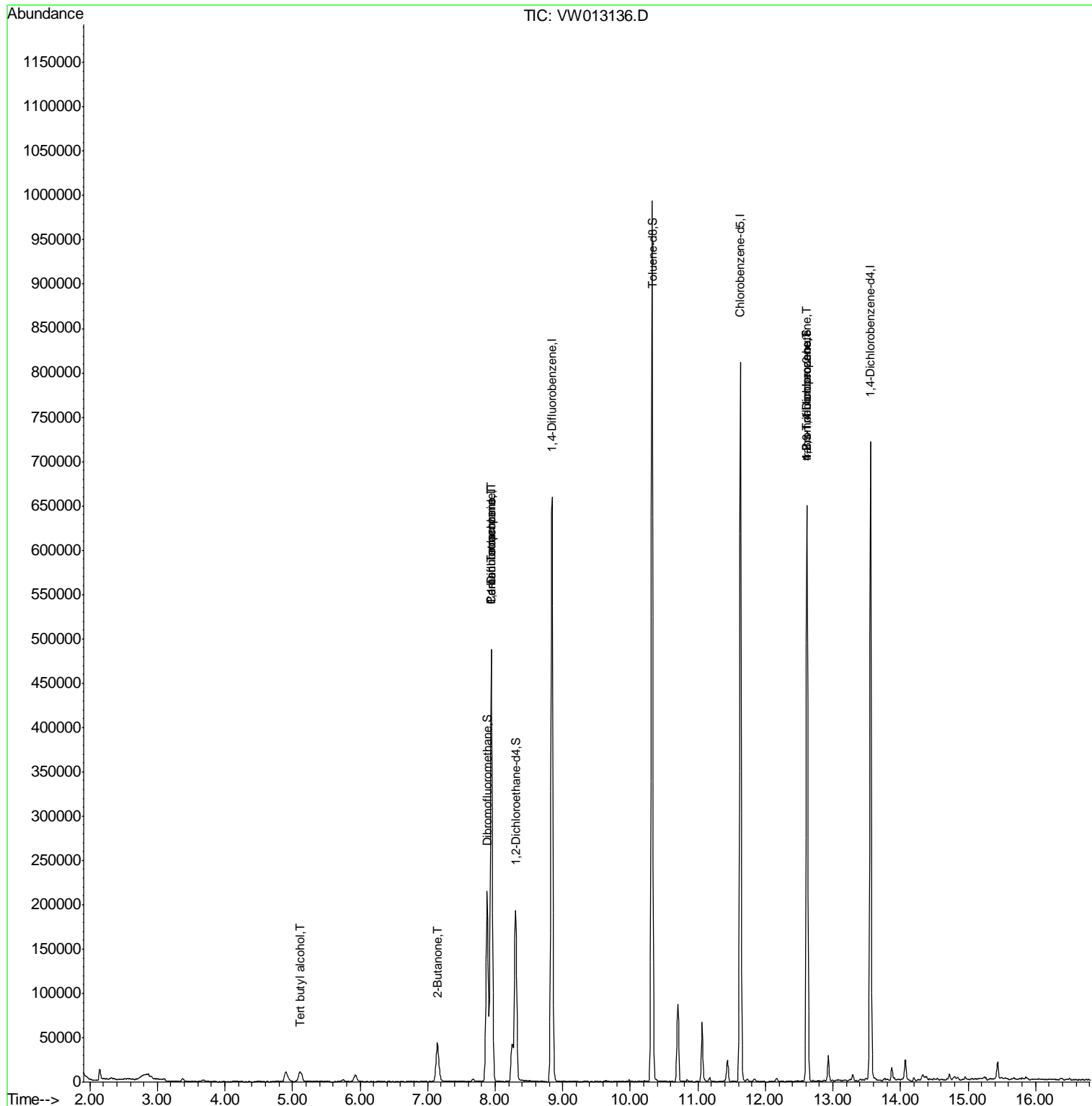
	R.T.	QIon	Response	Conc	Units	Qvalue
2) Dichlorodifluoromethane	2.00	85	219	Below Cal	#	44
3) Chloromethane	2.21	50	250	Below Cal		89
11) Tert butyl alcohol	5.12	59	10721	23.949	ug/l #	74
16) Acetone	4.13	43	800	Below Cal		91
20) Methylene Chloride	4.90	84	8205	Below Cal	#	80
25) 2-Butanone	7.15	43	2382	2.043	ug/l #	71
26) 2,2-Dichloropropane	7.15	77	3399	Below Cal	#	55
31) Cyclohexane	7.95	56	6960	Below Cal	#	1
36) 1,1-Dichloropropene	7.95	75	27068	5.749	ug/l #	51
38) Carbon Tetrachloride	7.95	117	35437	7.345	ug/l #	15
76) 1,2,3-Trichloropropane	12.61	75	96138	53.879	ug/l #	100
81) trans-1,4-Dichloro-2-buten	12.61	75	96138	122.224	ug/l #	7

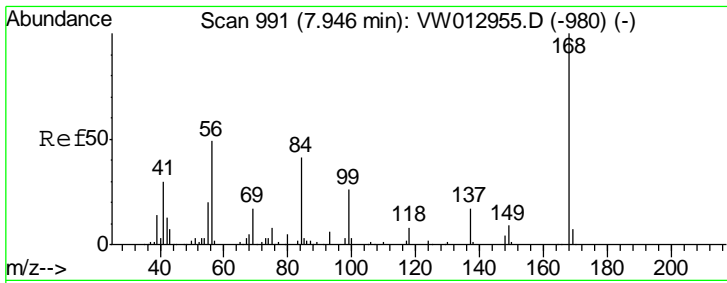
(#) = qualifier out of range (m) = manual integration (+) = signals summed

Data File : VW013136.D
Acq On : 19 Sep 2019 02:49
Operator : SY/VA
Sample : K4924-07
Misc : 4.98G/5ML/MSVOA_W/SOIL
ALS Vial : 37 Sample Multiplier: 1

Instrument :
MSVOA_W
ClientSampleId :
SB-50-14.5-15.0

Quant Time: Sep 19 08:03:36 2019
Quant Method : Z:\VOASRV\HPCHEM1\MSVOA_W\METHOD\82W091419S.M
Quant Title : SW846 8260
QLast Update : Fri Sep 13 17:26:01 2019
Response via : Initial Calibration

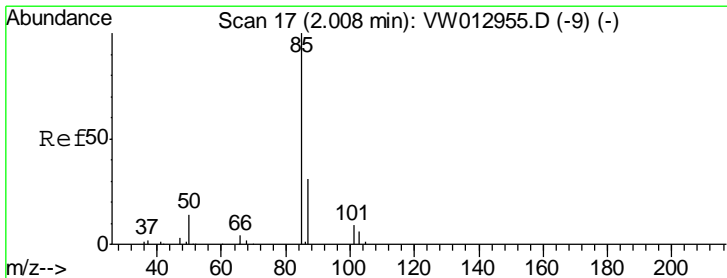
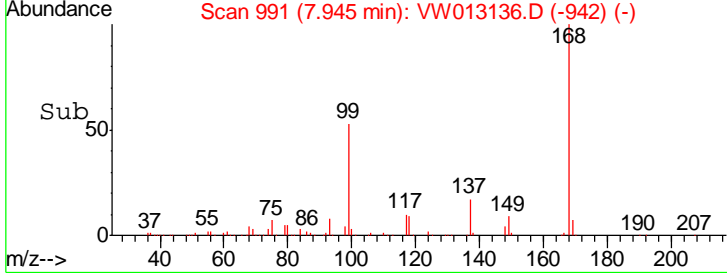
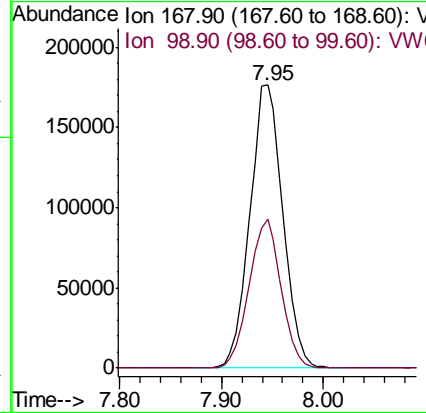
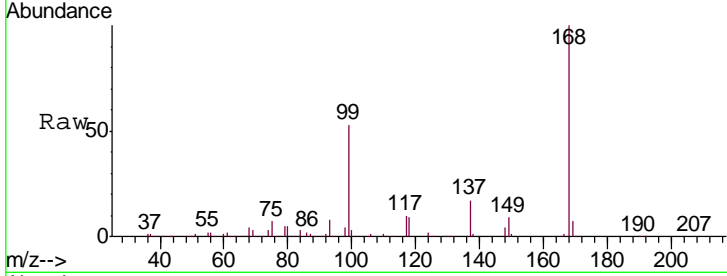




#1
 Pentafluorobenzene
 Concen: 50.000 ug/l
 RT: 7.95 min Scan# 991
 Delta R.T. -0.00 min
 Lab File: VW013136.D
 Acq: 19 Sep 2019 02:49

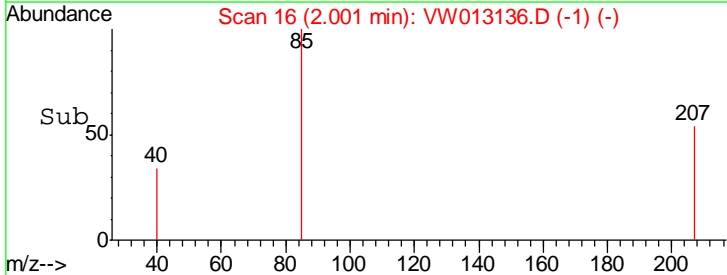
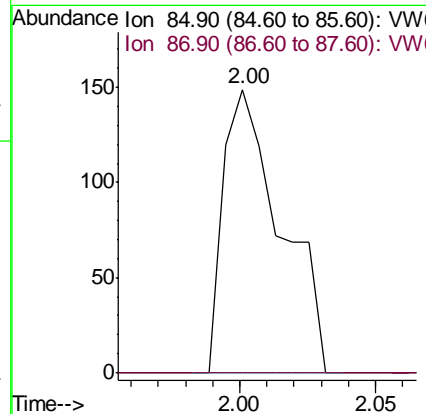
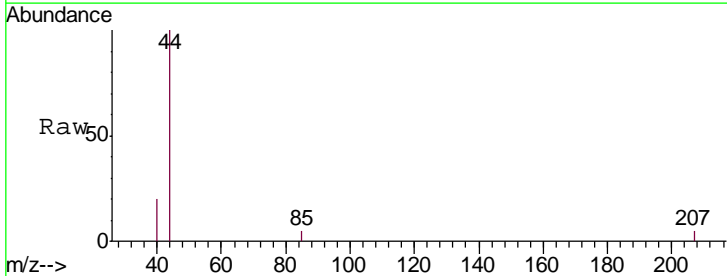
Instrument :
 MSVOA_W
 ClientSampleId :
 SB-50-14.5-15.0

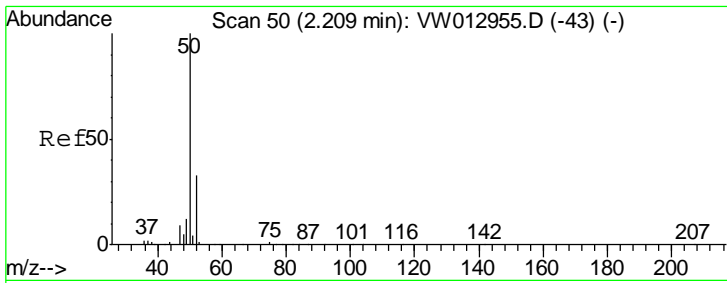
Tgt Ion: 168 Resp: 396992
 Ion Ratio Lower Upper
 168 100
 99 52.8 46.2 69.2



#2
 Dichlorodifluoromethane
 Concen: Below Cal
 RT: 2.00 min Scan# 16
 Delta R.T. -0.01 min
 Lab File: VW013136.D
 Acq: 19 Sep 2019 02:49

Tgt Ion: 85 Resp: 219
 Ion Ratio Lower Upper
 85 100
 87 0.0 15.4 46.4#

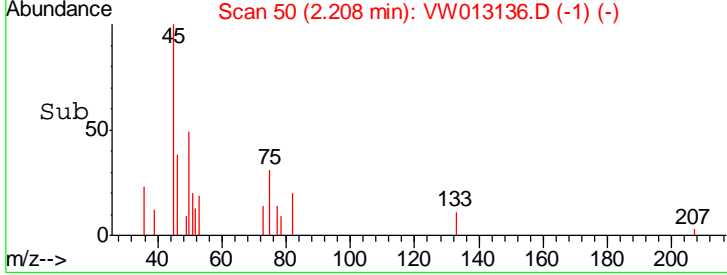
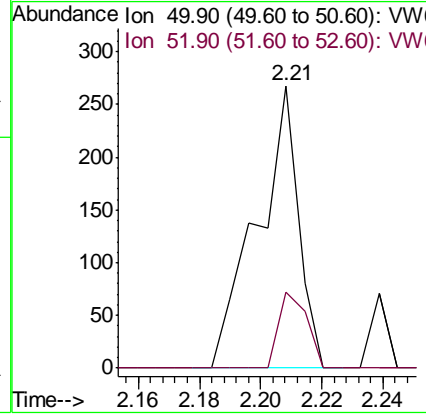
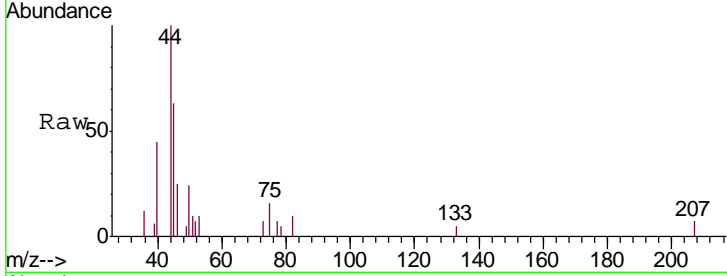




#3
 Chloromethane
 Concen: Below Cal
 RT: 2.21 min Scan# 50
 Delta R.T. 0.00 min
 Lab File: VW013136.D
 Acq: 19 Sep 2019 02:49

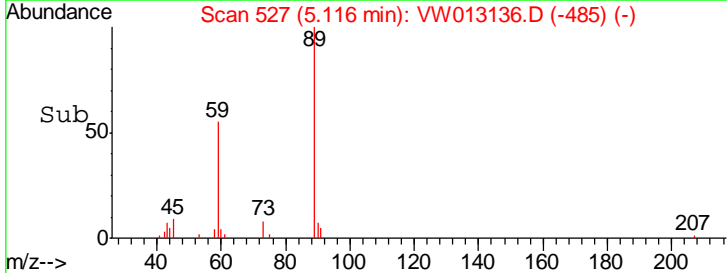
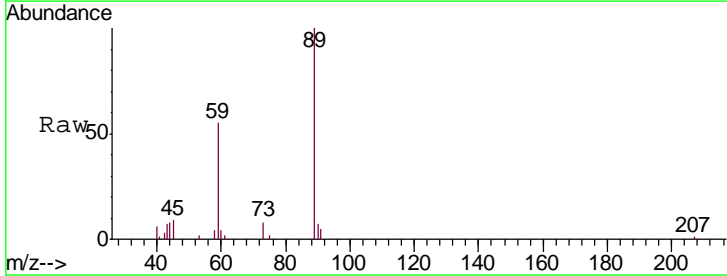
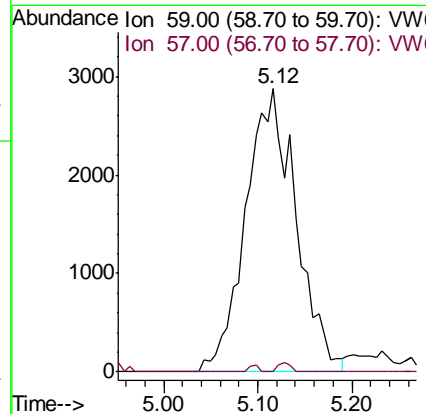
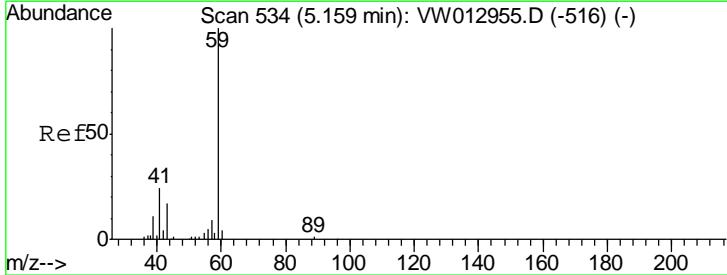
Instrument :
 MSVOA_W
 ClientSampled :
 SB-50-14.5-15.0

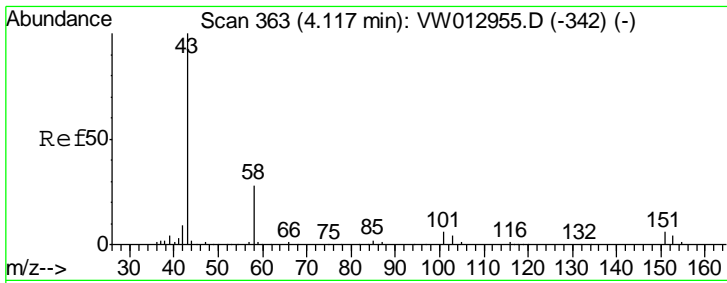
Tgt Ion: 50 Resp: 250
 Ion Ratio Lower Upper
 50 100
 52 26.9 26.6 39.8



#11
 Tert butyl alcohol
 Concen: 23.949 ug/l
 RT: 5.12 min Scan# 527
 Delta R.T. -0.04 min
 Lab File: VW013136.D
 Acq: 19 Sep 2019 02:49

Tgt Ion: 59 Resp: 10721
 Ion Ratio Lower Upper
 59 100
 57 0.8 8.5 12.7#

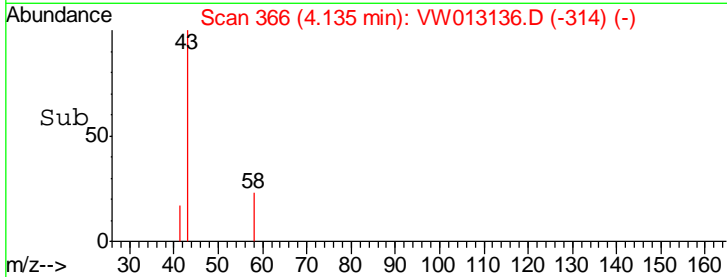
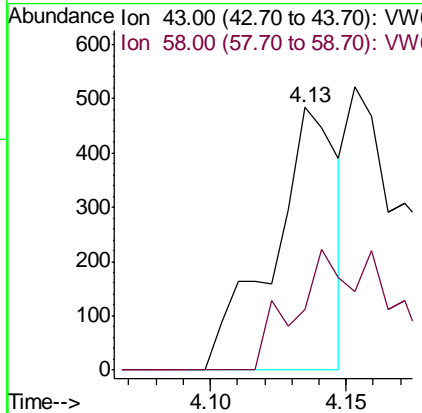
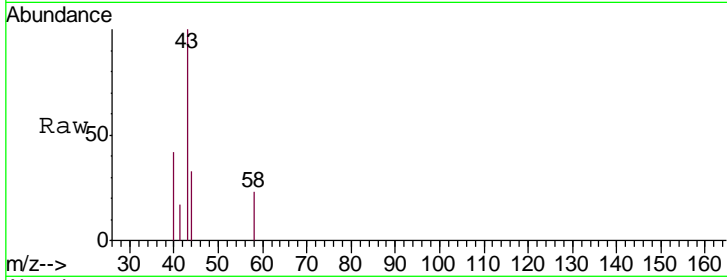




#16
 Acetone
 Concen: Below Cal
 RT: 4.13 min Scan# 366
 Delta R.T. 0.02 min
 Lab File: VW013136.D
 Acq: 19 Sep 2019 02:49

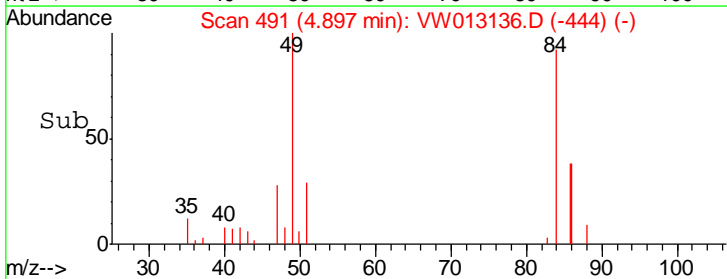
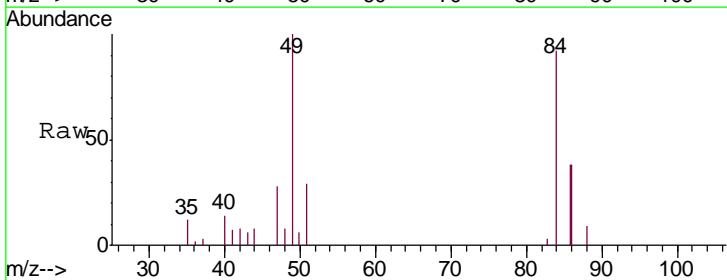
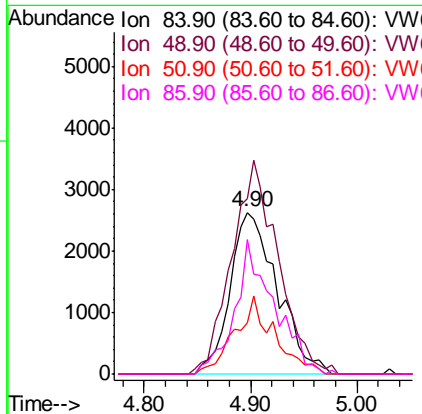
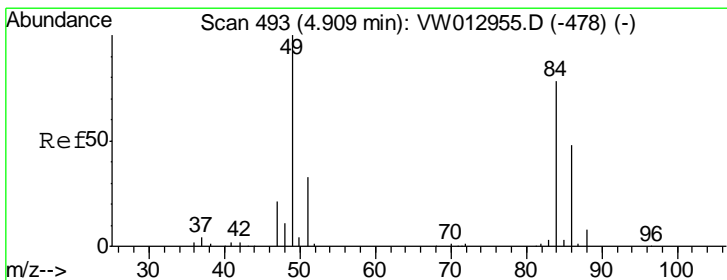
Instrument :
 MSVOA_W
 ClientSampled :
 SB-50-14.5-15.0

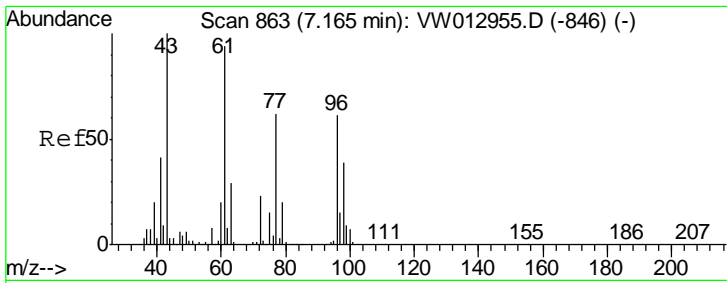
Tgt Ion	Resp	Lower	Upper
43	100		
58	22.9	22.3	33.5



#20
 Methylene Chloride
 Concen: Below Cal
 RT: 4.90 min Scan# 491
 Delta R.T. -0.01 min
 Lab File: VW013136.D
 Acq: 19 Sep 2019 02:49

Tgt Ion	Resp	Lower	Upper
84	100		
49	108.5	102.0	153.0
51	31.6	34.0	51.0#
86	83.2	48.5	72.7#

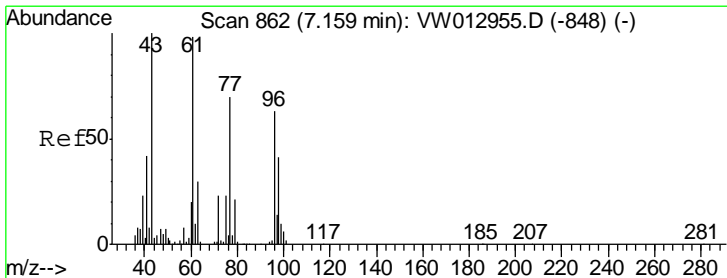
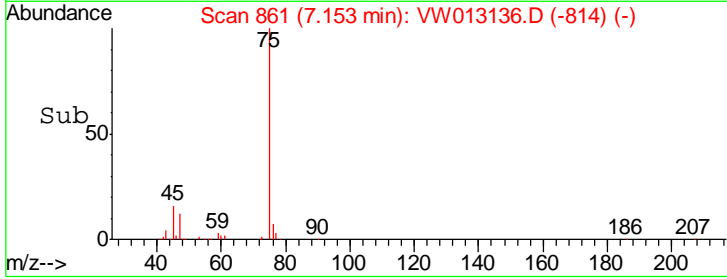
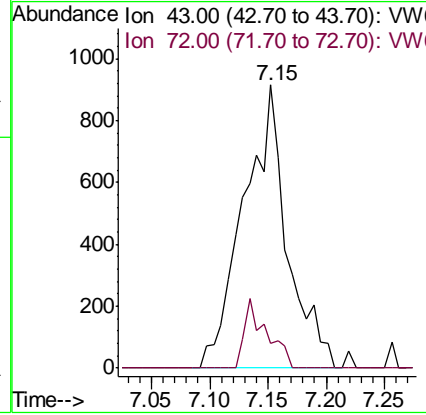
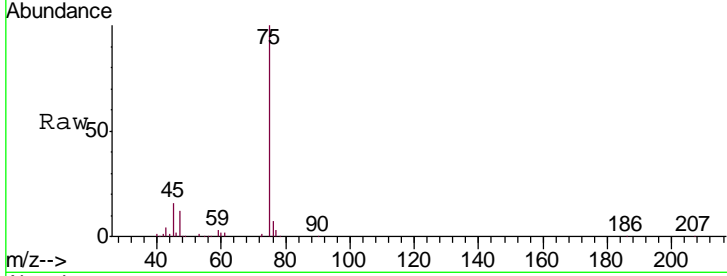




#25
 2-Butanone
 Concen: 2.043 ug/l
 RT: 7.15 min Scan# 861
 Delta R.T. -0.01 min
 Lab File: VW013136.D
 Acq: 19 Sep 2019 02:49

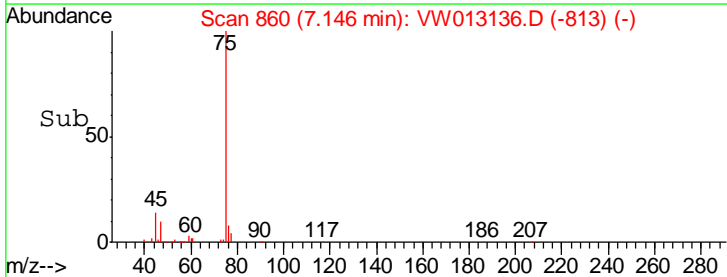
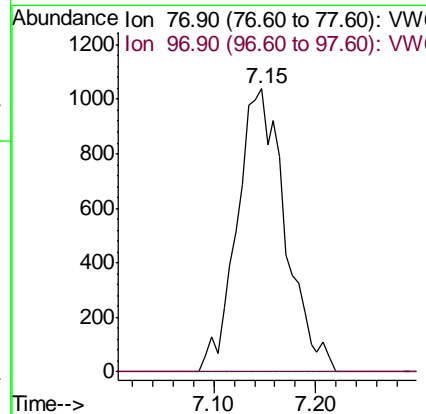
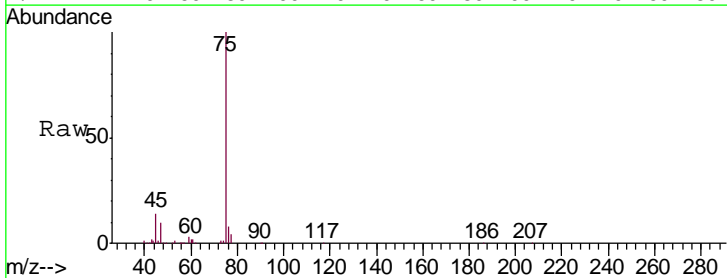
Instrument :
 MSVOA_W
ClientSampled :
 SB-50-14.5-15.0

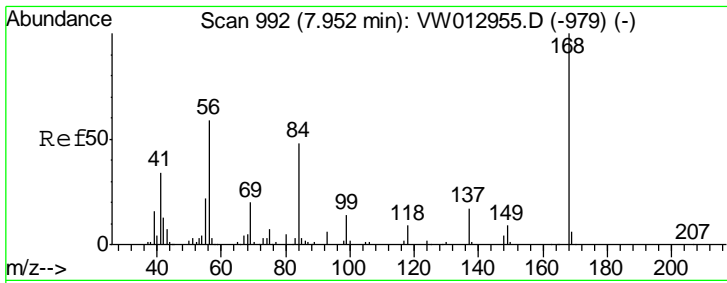
Tgt Ion: 43 Resp: 2382
 Ion Ratio Lower Upper
 43 100
 72 8.6 18.2 27.4#



#26
 2,2-Dichloropropane
 Concen: Below Cal
 RT: 7.15 min Scan# 860
 Delta R.T. -0.01 min
 Lab File: VW013136.D
 Acq: 19 Sep 2019 02:49

Tgt Ion: 77 Resp: 3399
 Ion Ratio Lower Upper
 77 100
 97 0.0 10.7 32.1#

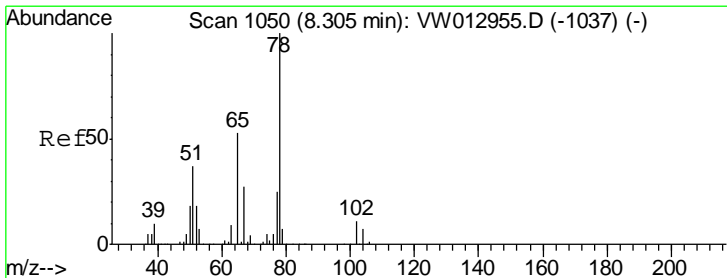
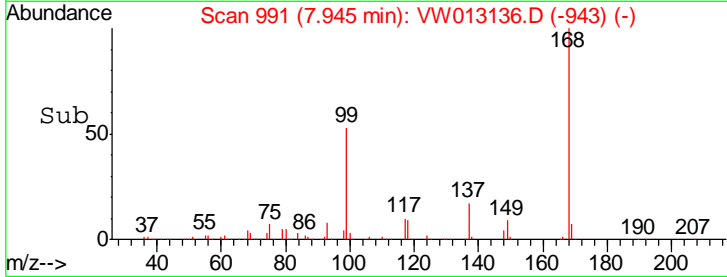
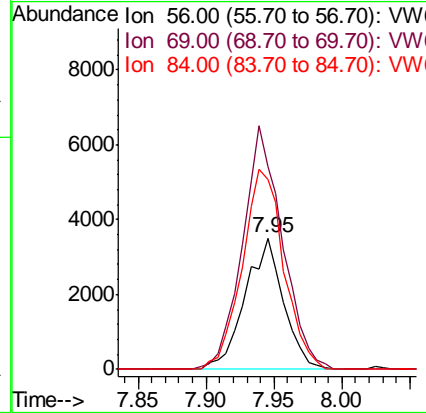
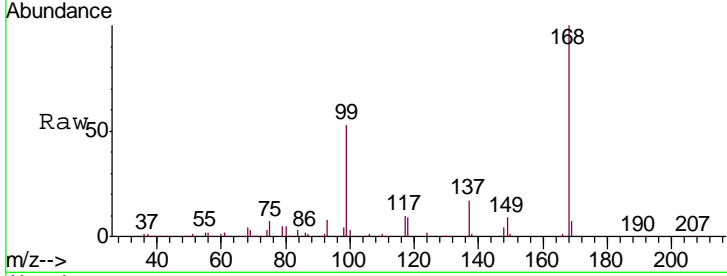




#31
 Cyclohexane
 Concen: Below Cal
 RT: 7.95 min Scan# 991
 Delta R.T. -0.01 min
 Lab File: VW013136.D
 Acq: 19 Sep 2019 02:49

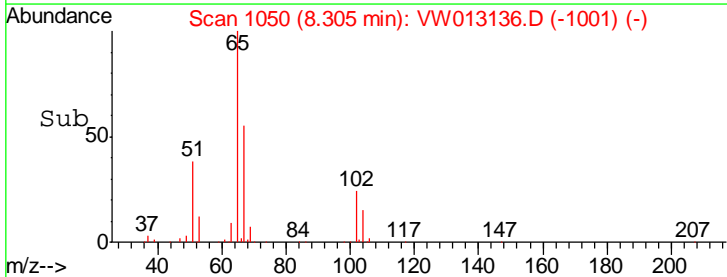
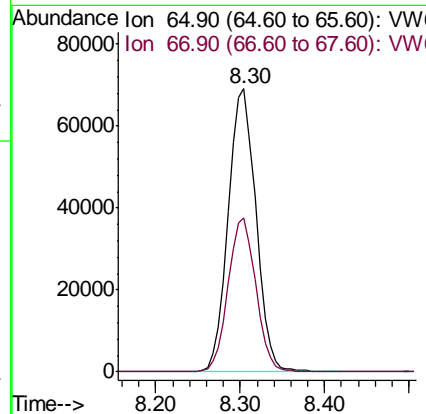
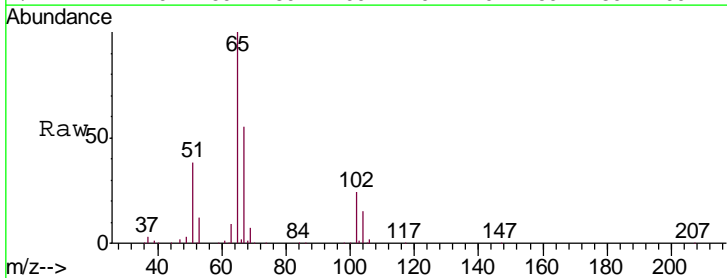
Instrument :
 MSVOA_W
 ClientSampled :
 SB-50-14.5-15.0

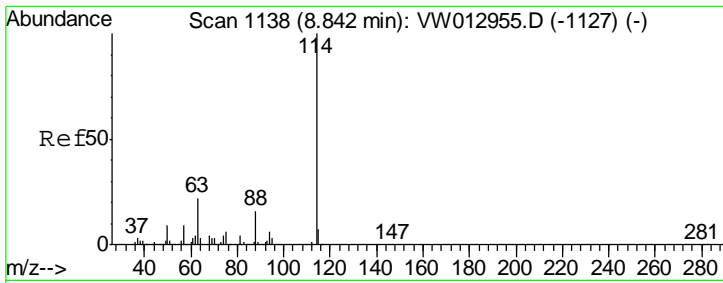
Tgt Ion	Resp	Lower	Upper
56	100		
69	154.7	27.0	40.6#
84	144.5	66.2	99.2#



#33
 1,2-Dichloroethane-d4
 Concen: 42.113 ug/l
 RT: 8.30 min Scan# 1050
 Delta R.T. -0.00 min
 Lab File: VW013136.D
 Acq: 19 Sep 2019 02:49

Tgt Ion	Resp	Lower	Upper
65	100		
67	54.5	0.0	101.2

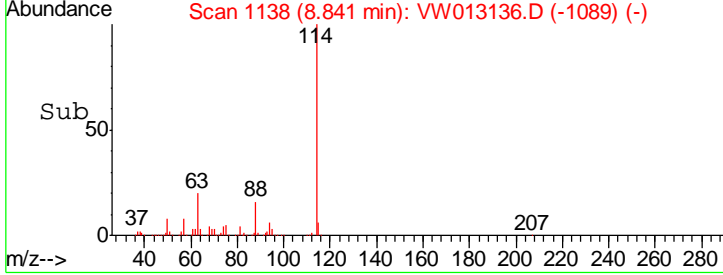
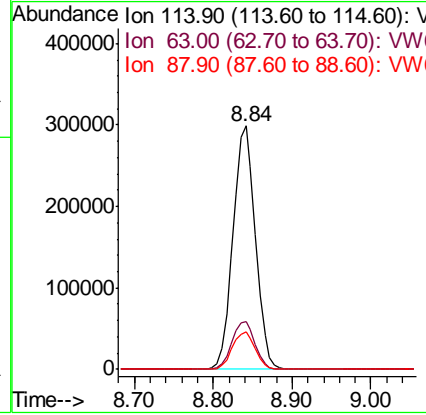
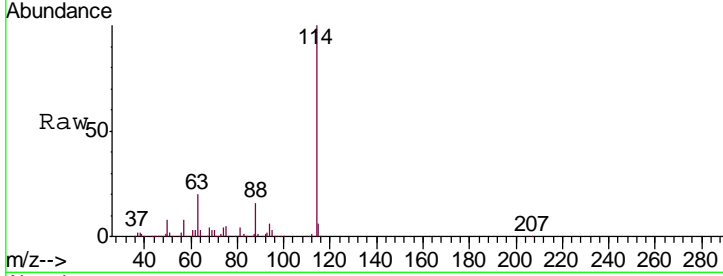




#34
 1,4-Difluorobenzene
 Concen: 50.000 ug/l
 RT: 8.84 min Scan# 1138
 Delta R.T. -0.00 min
 Lab File: VW013136.D
 Acq: 19 Sep 2019 02:49

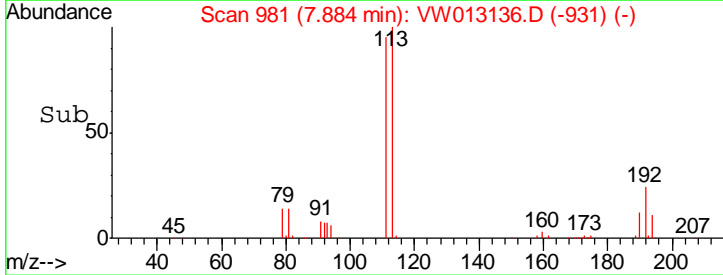
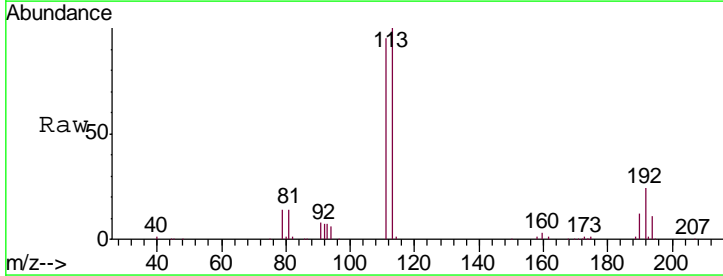
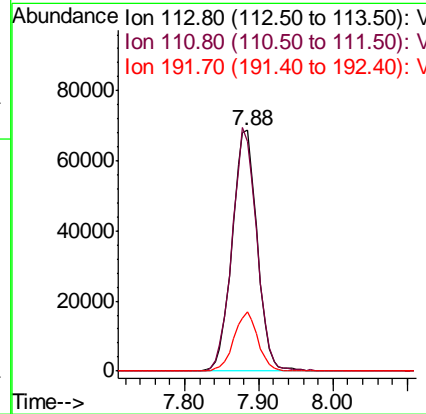
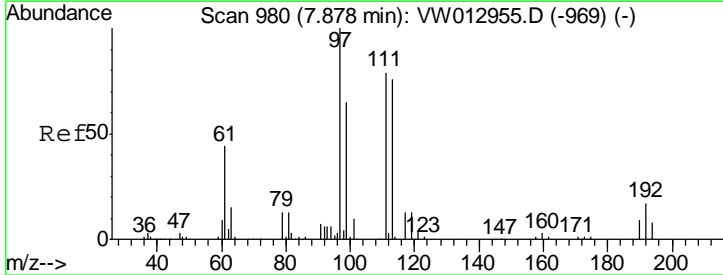
Instrument : MSVOA_W
 ClientSampled : SB-50-14.5-15.0

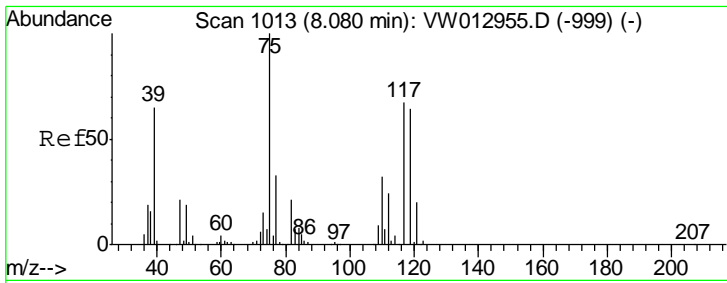
Tgt Ion	Resp	Lower	Upper
114	589161		
63	19.6	0.0	43.4
88	15.6	0.0	31.6



#35
 Dibromofluoromethane
 Concen: 50.438 ug/l
 RT: 7.88 min Scan# 981
 Delta R.T. 0.01 min
 Lab File: VW013136.D
 Acq: 19 Sep 2019 02:49

Tgt Ion	Resp	Lower	Upper
113	161243		
111	99.6	82.8	124.2
192	23.6	17.8	26.8

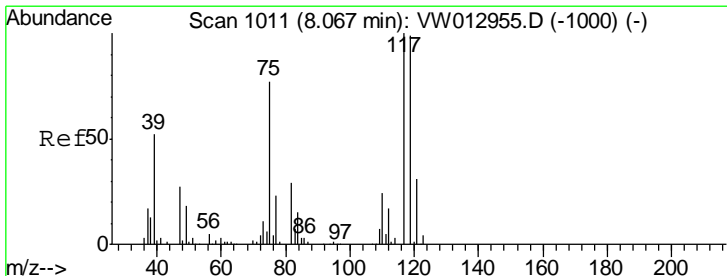
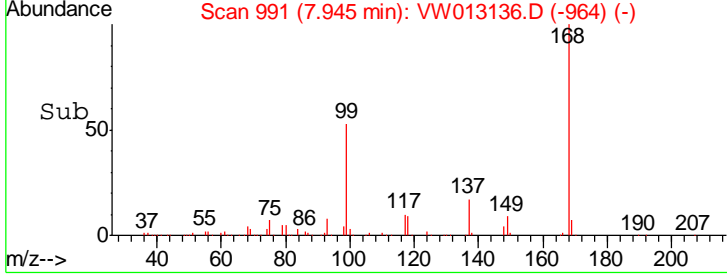
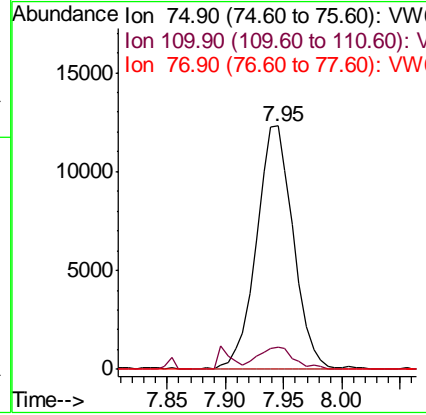
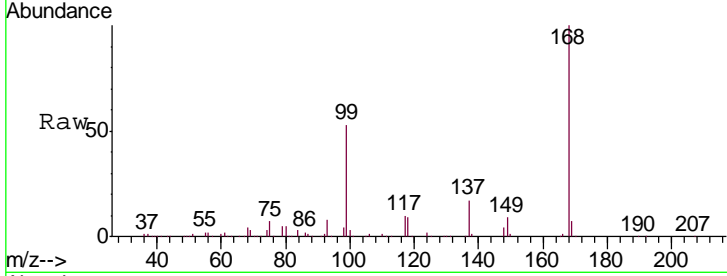




#36
 1,1-Dichloropropene
 Concen: 5.749 ug/l
 RT: 7.95 min Scan# 991
 Delta R.T. -0.13 min
 Lab File: VW013136.D
 Acq: 19 Sep 2019 02:49

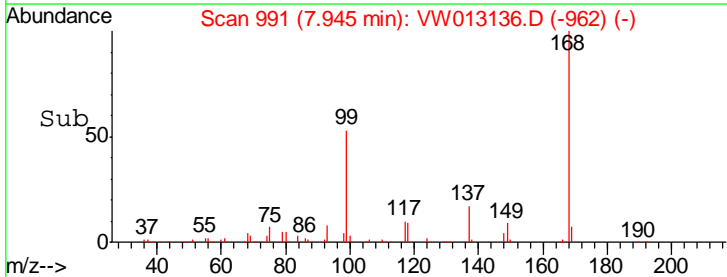
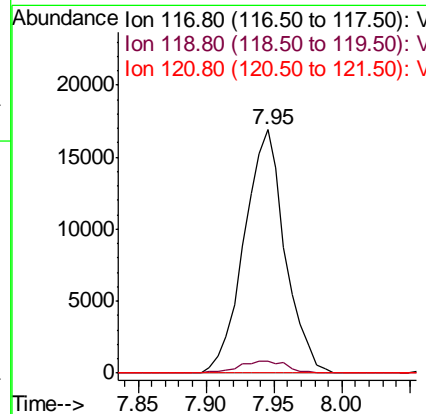
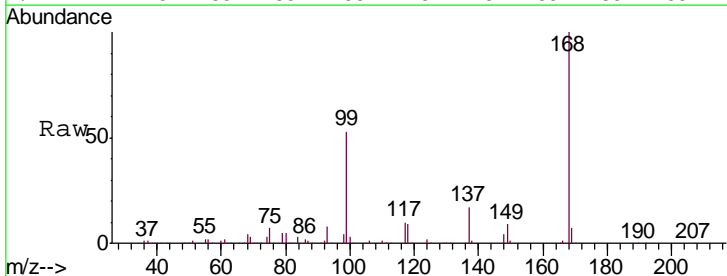
Instrument :
 MSVOA_W
ClientSampled :
 SB-50-14.5-15.0

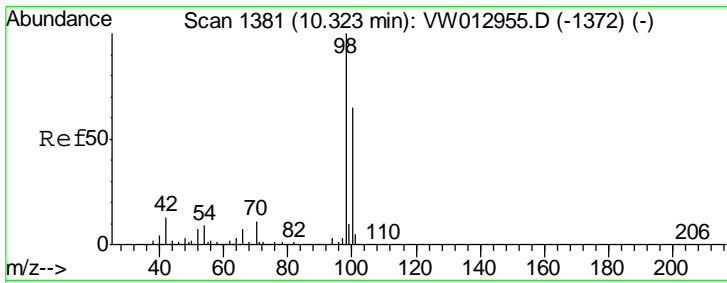
Tgt Ion	Resp	Lower	Upper
75	27068		
110	8.8	16.4	49.1#
77	0.0	25.1	37.7#



#38
 Carbon Tetrachloride
 Concen: 7.345 ug/l
 RT: 7.95 min Scan# 991
 Delta R.T. -0.12 min
 Lab File: VW013136.D
 Acq: 19 Sep 2019 02:49

Tgt Ion	Resp	Lower	Upper
117	35437		
119	5.0	79.4	119.0#
121	0.0	24.6	36.8#

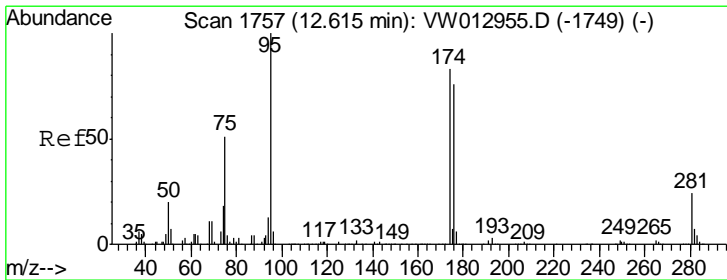
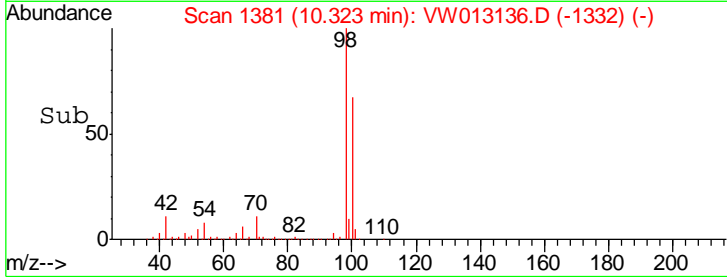
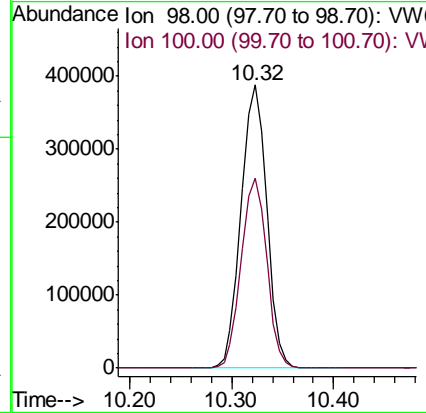
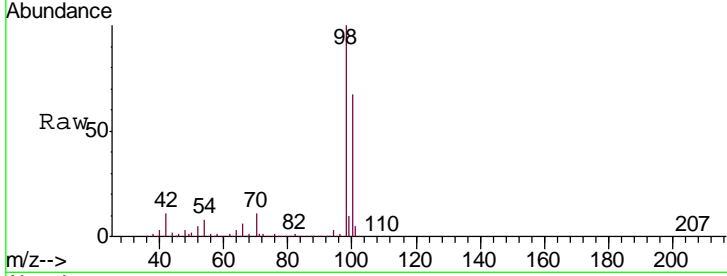




#50
 Toluene-d8
 Concen: 54.151 ug/l
 RT: 10.32 min Scan# 1381
 Delta R.T. -0.00 min
 Lab File: VW013136.D
 Acq: 19 Sep 2019 02:49

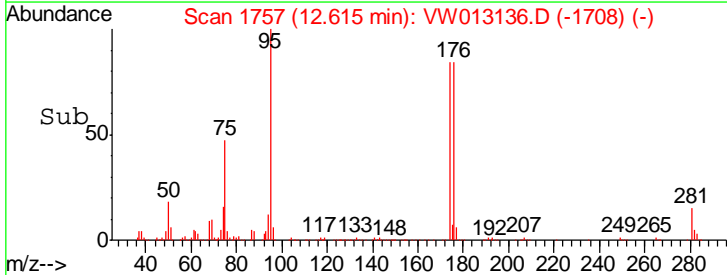
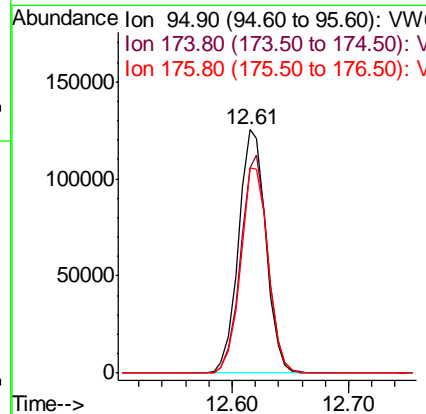
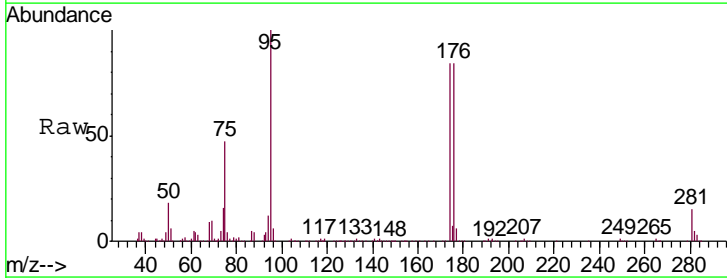
Instrument : MSVOA_W
 ClientSampled : SB-50-14.5-15.0

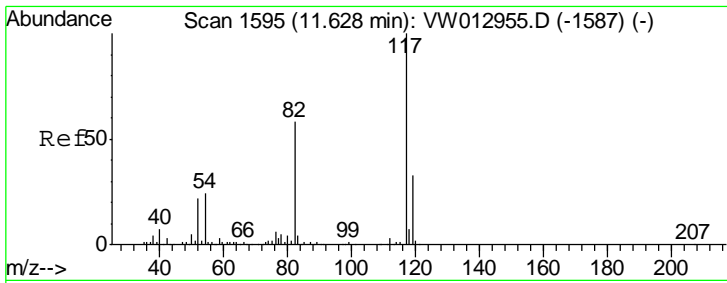
Tgt Ion: 98 Resp: 677406
 Ion Ratio Lower Upper
 98 100
 100 66.8 52.1 78.1



#62
 4-Bromofluorobenzene
 Concen: 45.545 ug/l
 RT: 12.61 min Scan# 1757
 Delta R.T. -0.00 min
 Lab File: VW013136.D
 Acq: 19 Sep 2019 02:49

Tgt Ion: 95 Resp: 204870
 Ion Ratio Lower Upper
 95 100
 174 88.3 0.0 170.4
 176 84.8 0.0 164.6

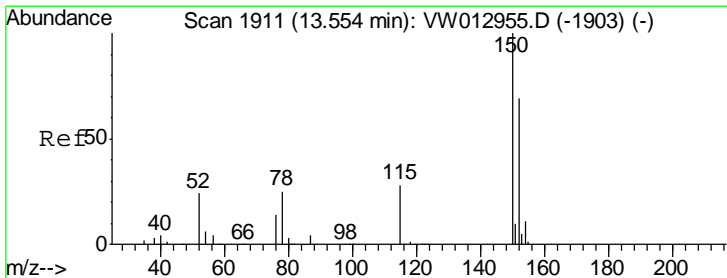
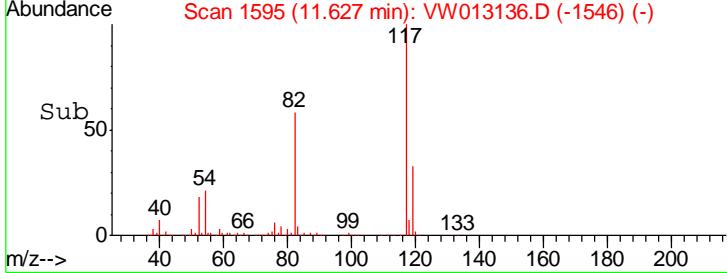
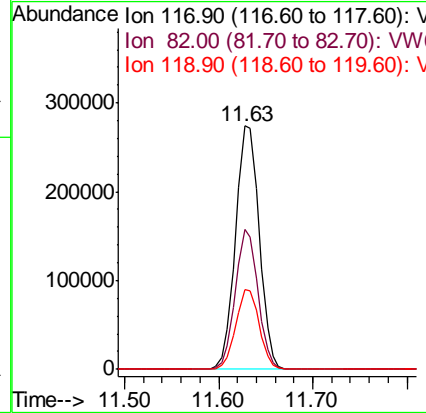
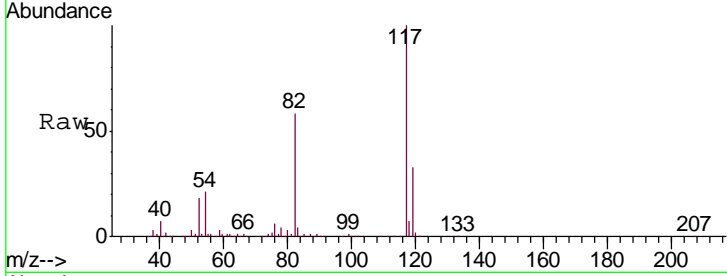




#63
 Chlorobenzene-d5
 Concen: 50.000 ug/l
 RT: 11.63 min Scan# 1595
 Delta R.T. -0.00 min
 Lab File: VW013136.D
 Acq: 19 Sep 2019 02:49

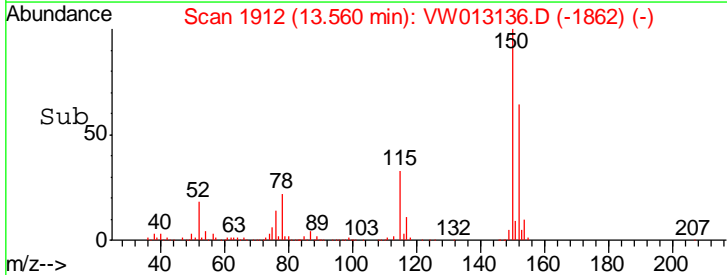
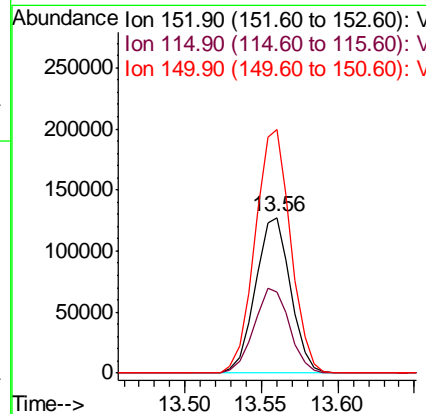
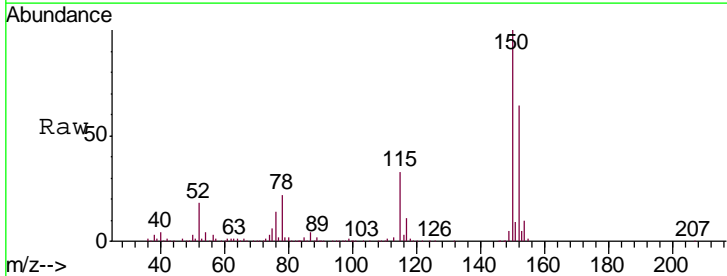
Instrument :
 MSVOA_W
 ClientSampled :
 SB-50-14.5-15.0

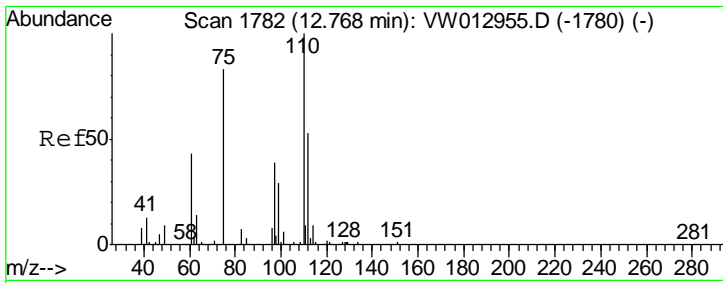
Tgt Ion	Resp	Lower	Upper
117	100		
82	57.6	46.3	69.5
119	32.6	26.2	39.4



#72
 1,4-Dichlorobenzene-d4
 Concen: 50.000 ug/l
 RT: 13.56 min Scan# 1912
 Delta R.T. 0.01 min
 Lab File: VW013136.D
 Acq: 19 Sep 2019 02:49

Tgt Ion	Resp	Lower	Upper
152	100		
115	55.3	28.8	86.4
150	158.0	0.0	340.2

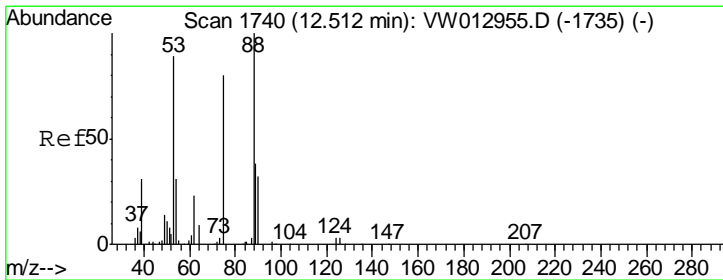
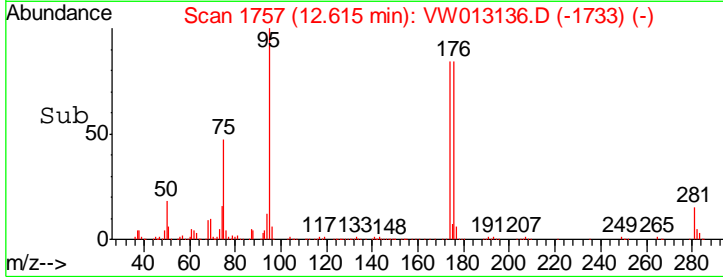
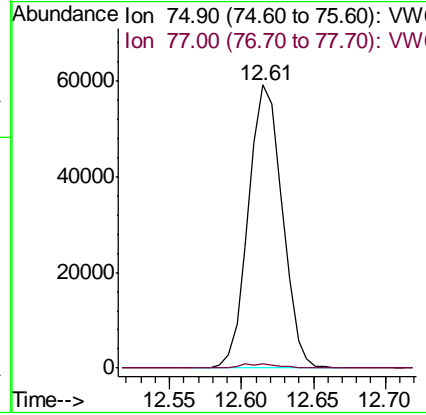
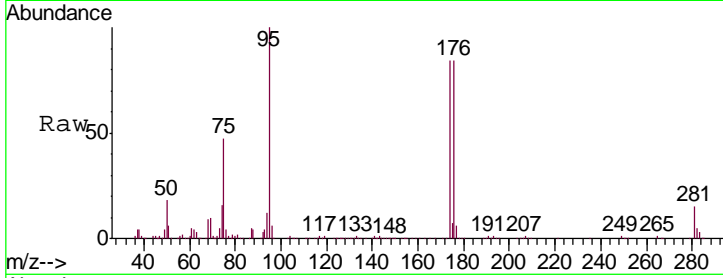




#76
 1,2,3-Trichloropropane
 Concen: 53.879 ug/l
 RT: 12.61 min Scan# 1757
 Delta R.T. -0.15 min
 Lab File: VW013136.D
 Acq: 19 Sep 2019 02:49

Instrument :
 MSVOA_W
 ClientSampled :
 SB-50-14.5-15.0

Tgt Ion: 75 Resp: 96138
 Ion Ratio Lower Upper
 75 100
 77 1.6 0.0 0.0#



#81
 trans-1,4-Dichloro-2-butene
 Concen: 122.224 ug/l
 RT: 12.61 min Scan# 1757
 Delta R.T. 0.10 min
 Lab File: VW013136.D
 Acq: 19 Sep 2019 02:49

Tgt Ion: 75 Resp: 96138
 Ion Ratio Lower Upper
 75 100
 53 0.0 85.6 128.4#
 89 0.1 37.2 55.8#

