

Data Path : Z:\VOASRV\HPCHEM1\MSVOA W\DATA\VW091819\
 Data File : VW013124.D
 Acq On : 18 Sep 2019 19:54
 Operator : SY/VA
 Sample : K4942-05
 Misc : 4.27G/5ML/MSVOA W/SOIL
 ALS Vial : 21 Sample Multiplier: 1

Instrument :
 MSVOA_W
 ClientSampled :
 TP-3

Integration Parameters: RTEINT.P
 Integrator: RTE
 Smoothing : ON
 Sampling : 1
 Start Thrs: 0.2
 Stop Thrs : 0

Filtering: 5
 Min Area: 3 % of largest Peak
 Max Peaks: 100
 Peak Location: TOP

If leading or trailing edge < 100 prefer < Baseline drop else tangent >
 Peak separation: 5

Method : Z:\VOASRV\HPCHEM1\MSVOA_W\METHOD\82W091419S.M
 Title : SW846 8260

Signal : TIC

peak #	R.T. min	first scan	max scan	last scan	PK TY	peak height	corr. area	corr. % max.	% of total
1	2.148	35	40	47	rBV	13118	22573	1.48%	0.285%
2	4.910	481	493	508	rBV2	17396	60967	4.00%	0.770%
3	7.153	853	861	875	rVB2	6178	19915	1.31%	0.252%
4	7.878	971	980	985	rBV	195155	458737	30.09%	5.794%
5	7.946	985	991	1001	rVB	406357	898077	58.91%	11.342%
6	8.305	1040	1050	1063	rBV	184757	419115	27.49%	5.293%
7	8.836	1127	1137	1148	rBV	559281	1129685	74.10%	14.267%
8	10.323	1372	1381	1390	rBV	871867	1524493	100.00%	19.254%
9	10.707	1437	1444	1451	rBV	15934	27533	1.81%	0.348%
10	11.628	1587	1595	1607	rBV	726502	1219203	79.97%	15.398%
11	12.615	1750	1757	1769	rVB	570666	932143	61.14%	11.773%
12	12.926	1802	1808	1815	rBV4	28568	49697	3.26%	0.628%
13	13.554	1903	1911	1920	rBV	658232	1070897	70.25%	13.525%
14	13.871	1956	1963	1968	rBV2	23170	35544	2.33%	0.449%
15	14.072	1989	1996	2009	rVB2	18053	33293	2.18%	0.420%
16	14.725	2094	2103	2109	rBV4	9993	16079	1.05%	0.203%

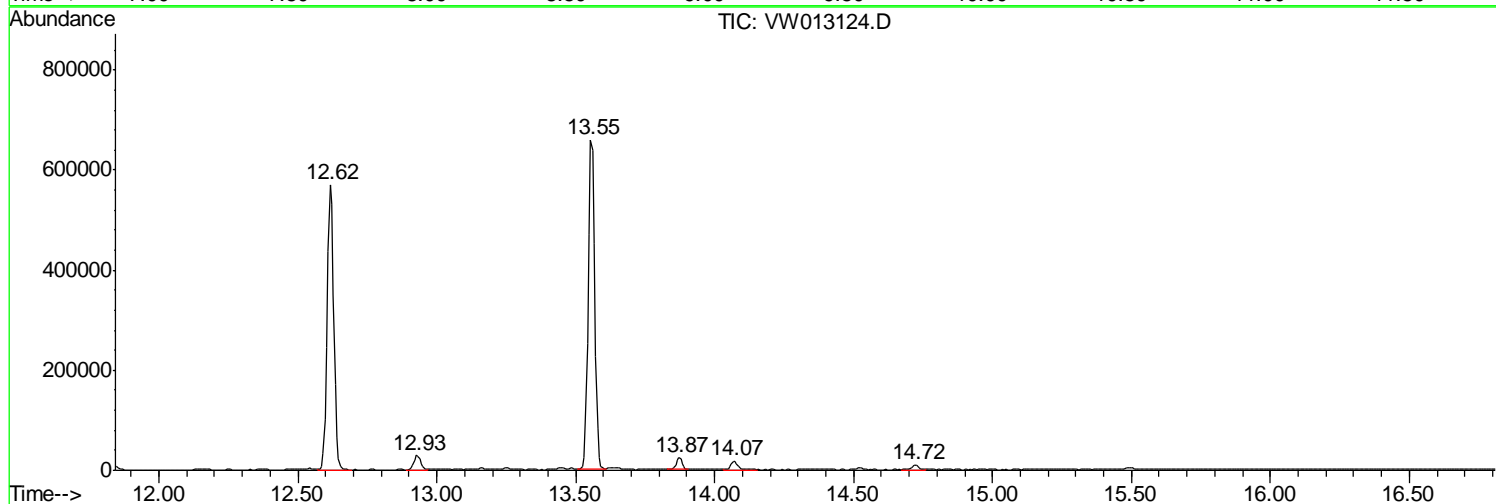
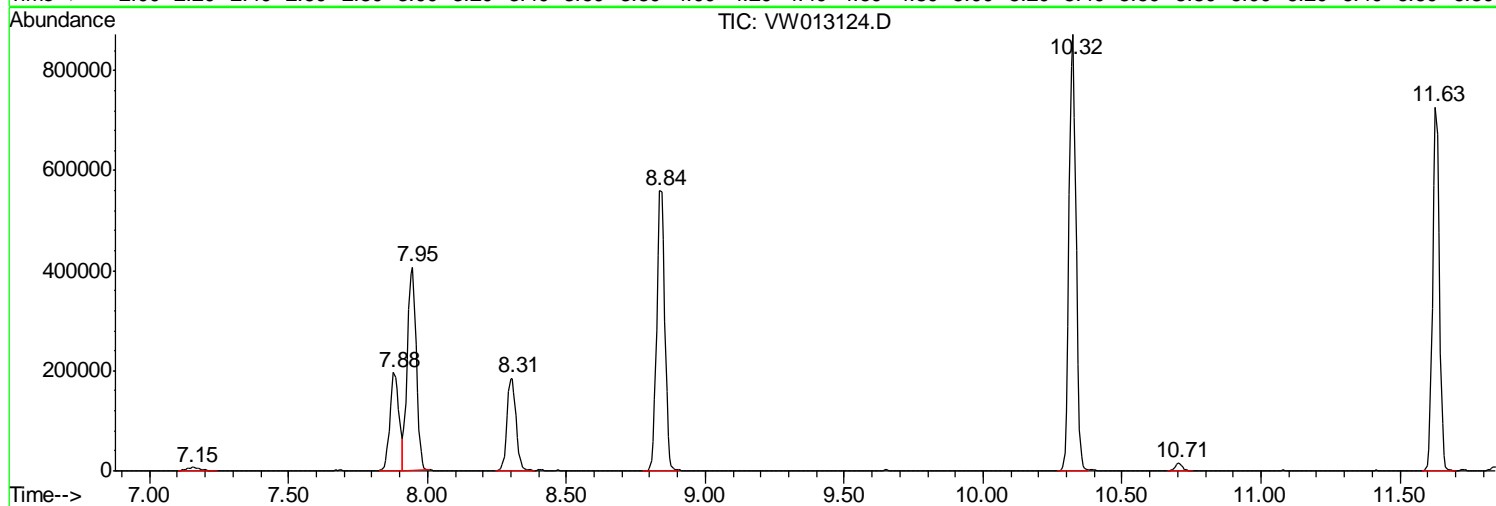
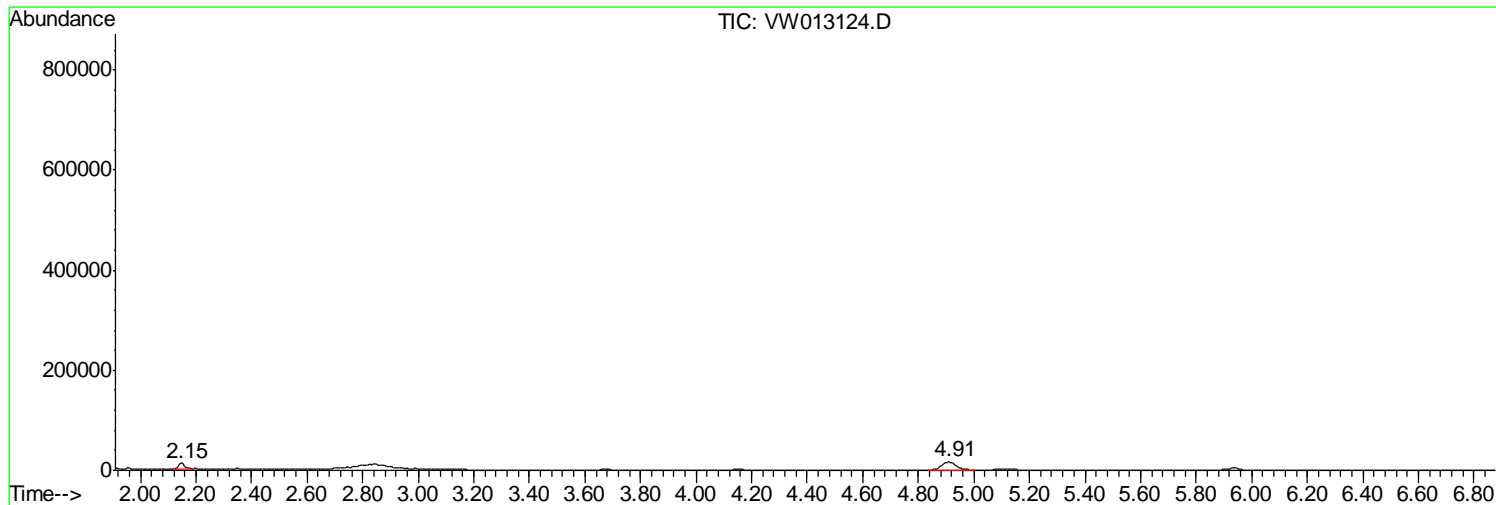
Sum of corrected areas: 7917951

Data Path : Z:\VOASRV\HPCHEM1\MSVOA W\DATA\VW091819\
Data File : VW013124.D
Acq On : 18 Sep 2019 19:54
Operator : SY/VA
Sample : K4942-05
Misc : 4.27G/5ML/MSVOA W/SOIL
ALS Vial : 21 Sample Multiplier: 1

Instrument :
MSVOA_W
ClientSampled :
TP-3

Quant Method : Z:\VOASRV\HPCHEM1\MSVOA_W\METHOD\82W091419S.M
Quant Title : SW846 8260

TIC Library : C:\DATABASE\NIST11.L
TIC Integration Parameters: LSCINT.P



Data Path : Z:\VOASRV\HPCHEM1\MSVOA_W\DATA\VW091819\
Data File : VW013124.D
Acq On : 18 Sep 2019 19:54
Operator : SY/VA
Sample : K4942-05
Misc : 4.27G/5ML/MSVOA_W/SOIL
ALS Vial : 21 Sample Multiplier: 1

Instrument :
MSVOA_W
ClientSampleId :
TP-3

Quant Method : Z:\VOASRV\HPCHEM1\MSVOA_W\METHOD\82W091419S.M
Quant Title : SW846 8260

TIC Library : C:\DATABASE\NIST11.L
TIC Integration Parameters: LSCINT.P

No Library Search Compounds Detected

Data Path : Z:\VOASRV\HPCHEM1\MSVOA_W\DATA\VW091819\
Data File : VW013124.D
Acq On : 18 Sep 2019 19:54
Operator : SY/VA
Sample : K4942-05
Misc : 4.27G/5ML/MSVOA_W/SOIL
ALS Vial : 21 Sample Multiplier: 1

Instrument :
MSVOA_W
ClientSampleId :
TP-3

Quant Method : Z:\VOASRV\HPCHEM1\MSVOA_W\METHOD\82W091419S.M
Quant Title : SW846 8260

TIC Library : C:\DATABASE\NIST11.L
TIC Integration Parameters: LSCINT.P

TIC Top Hit name	RT	EstConc	Units	Response	--Internal Standard--			
					#	RT	Resp	Conc
