

Data Path : Z:\voasrv\HPCHEM1\MSVOA\_W\Data\VW091923\  
 Data File : VW027150.D  
 Acq On : 19 Sep 2023 16:15  
 Operator : SY/MD  
 Sample : 04472-16  
 Misc : 5.88g/10mL/MSVOA\_W/SOIL  
 ALS Vial : 1 Sample Multiplier: 1

**Instrument :**  
 MSVOA\_W  
**ClientSampleId :**  
 EZYM5

**Manual Integrations**  
**APPROVED**  
 Reviewed By :Semsettin Yesilyurt 09/20/2023  
 Supervised By :Mahesh Dadoda 09/20/2023

Quant Time: Sep 20 01:37:33 2023  
 Quant Method : Z:\voasrv\HPCHEM1\MSVOA\_W\Method\SFAMWLM091823SMA.M  
 Quant Title : SFAM01.0  
 QLast Update : Wed Sep 20 01:34:37 2023  
 Response via : Initial Calibration

Compound	R.T.	QIon	Response	Conc	Units	Dev(Min)
<b>Internal Standards</b>						
1) 1,4-Difluorobenzene	8.843	114	426241	25.000	ug/L	0.00
28) Chlorobenzene-d5	11.629	117	356660	25.000	ug/L	0.00
58) 1,4-Dichlorobenzene-d4	13.556	152	112722	25.000	ug/L	0.00
<b>System Monitoring Compounds</b>						
4) Vinyl Chloride-d3	2.357	65	108120	15.765	ug/L	-0.01
Spiked Amount	25.000	Range 30 - 150	Recovery =	63.080%		
7) Chloroethane-d5	2.893	69	155321	29.328	ug/L	0.00
Spiked Amount	25.000	Range 30 - 150	Recovery =	117.320%		
11) 1,1-Dichloroethene-d2	4.021	65	50305	17.109	ug/L	0.00
Spiked Amount	25.000	Range 45 - 110	Recovery =	68.440%		
21) 2-Butanone-d5	7.075	46	85559	67.377	ug/L	0.00
Spiked Amount	50.000	Range 20 - 135	Recovery =	134.760%		
24) Chloroform-d	7.648	84	297898	23.263	ug/L	0.00
Spiked Amount	25.000	Range 40 - 150	Recovery =	93.040%		
26) 1,2-Dichloroethane-d4	8.307	65	168312	26.937	ug/L	0.00
Spiked Amount	25.000	Range 70 - 130	Recovery =	107.760%		
32) Benzene-d6	8.276	84	575901	25.003	ug/L	0.00
Spiked Amount	25.000	Range 20 - 135	Recovery =	100.000%		
36) 1,2-Dichloropropane-d6	9.270	67	183909	28.218	ug/L	0.00
Spiked Amount	25.000	Range 70 - 120	Recovery =	112.880%		
41) Toluene-d8	10.319	98	455175	22.204	ug/L	0.00
Spiked Amount	25.000	Range 30 - 130	Recovery =	88.800%		
43) trans-1,3-Dichloroprop...	10.575	79	76436	29.022	ug/L	0.00
Spiked Amount	25.000	Range 30 - 135	Recovery =	116.080%		
47) 2-Hexanone-d5	10.922	63	57199	72.833	ug/L	0.00
Spiked Amount	50.000	Range 20 - 135	Recovery =	145.660%#		
56) 1,1,2,2-Tetrachloroeth...	12.690	84	201202	38.529	ug/L	0.00
Spiked Amount	25.000	Range 45 - 120	Recovery =	154.120%#		
66) 1,2-Dichlorobenzene-d4	13.849	152	94241	23.411	ug/L	0.00
Spiked Amount	25.000	Range 75 - 120	Recovery =	93.640%		
<b>Target Compounds</b>						
13) Acetone	4.125	43	16108	13.427	ug/L	98
14) Carbon disulfide	4.387	76	18004	0.869	ug/L #	91
16) Methylene chloride	4.911	84	34959	4.311	ug/L	91
22) 2-Butanone	7.185	43	7276m	4.490	ug/L	
35) Methylcyclohexane	9.337	83	7453	0.702	ug/L #	83
42) Toluene	10.386	91	23142	0.930	ug/L	99
53) m,p-Xylene	11.831	106	13878	1.326	ug/L	83
54) o-Xylene	12.166	106	7725	0.775	ug/L	92
60) Isopropylbenzene	12.459	105	12986m	0.860	ug/L	
62) 1,3,5-Trimethylbenzene	12.940	105	15025	1.243	ug/L	100
63) 1,2,4-Trimethylbenzene	13.245	105	31694	2.707	ug/L	92

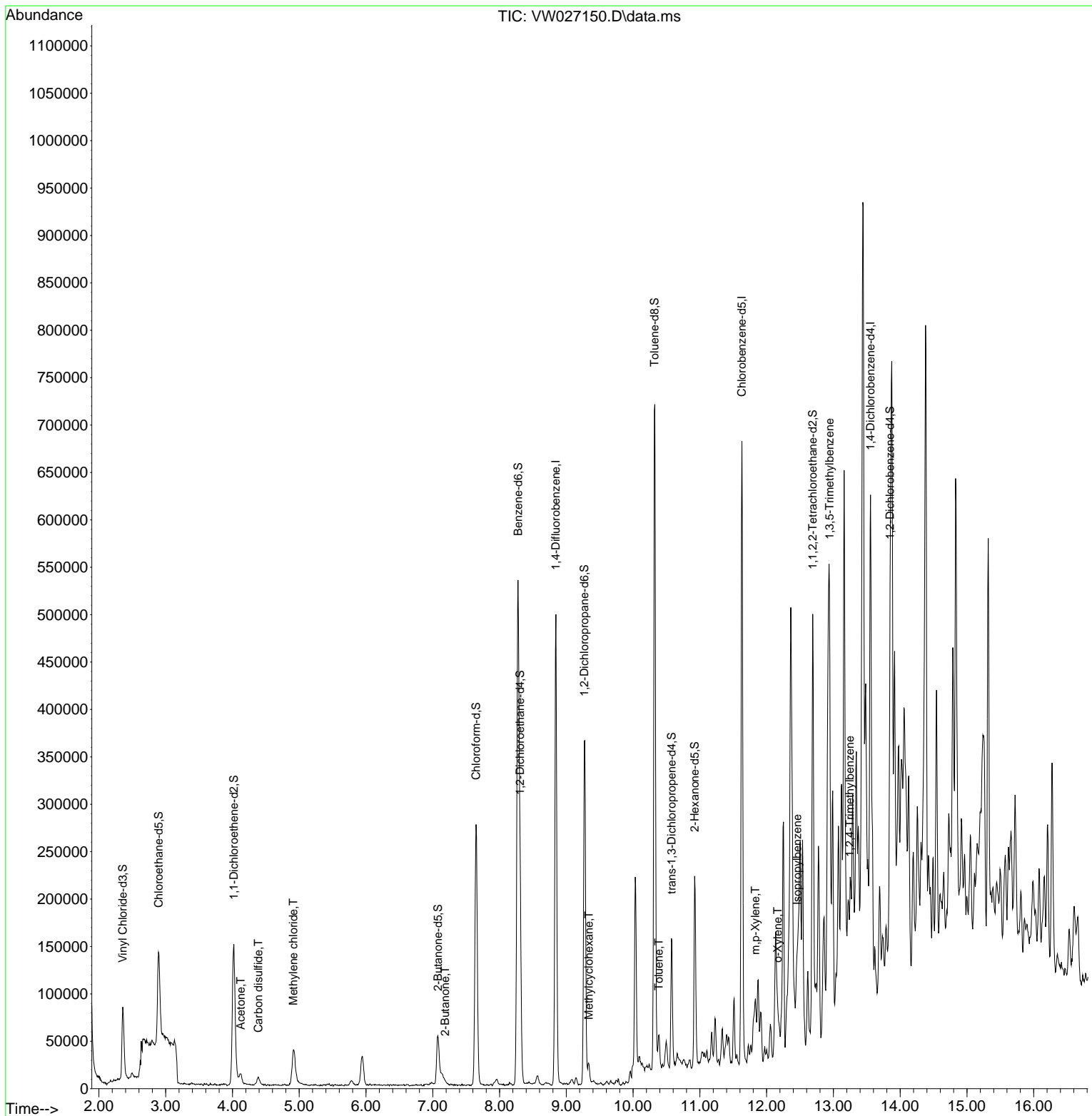
(#) = qualifier out of range (m) = manual integration (+) = signals summed

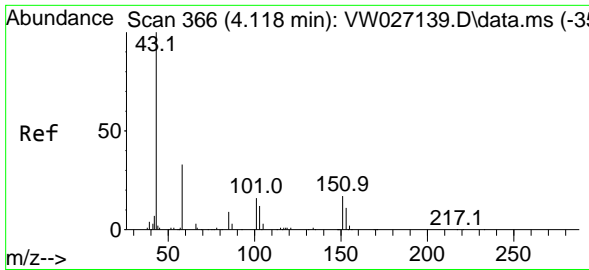
Data Path : Z:\voasrv\HPCHEM1\MSVOA\_W\Data\VW091923\  
 Data File : VW027150.D  
 Acq On : 19 Sep 2023 16:15  
 Operator : SY/MD  
 Sample : 04472-16  
 Misc : 5.88g/10mL/MSVOA\_W/SOIL  
 ALS Vial : 1 Sample Multiplier: 1

**Instrument :**  
 MSVOA\_W  
**ClientSampleId :**  
 EZYM5

Quant Time: Sep 20 01:37:33 2023  
 Quant Method : Z:\voasrv\HPCHEM1\MSVOA\_W\Method\SFAMWLM091823SMA.M  
 Quant Title : SFAM01.0  
 QLast Update : Wed Sep 20 01:34:37 2023  
 Response via : Initial Calibration

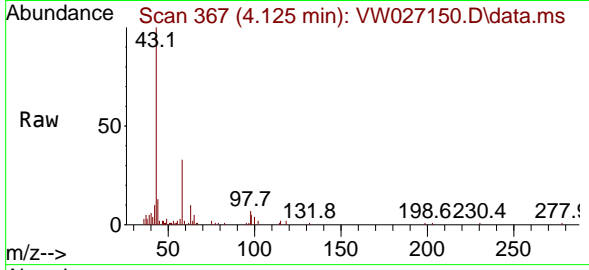
**Manual Integrations**  
**APPROVED**  
 Reviewed By :Semsettin Yesilyurt 09/20/2023  
 Supervised By :Mahesh Dadoda 09/20/2023





#13  
 Acetone  
 Concen: 13.427 ug/L  
 RT: 4.125 min Scan# 30  
 Delta R.T. 0.006 min  
 Lab File: VW027150.D  
 Acq: 19 Sep 2023 16:15

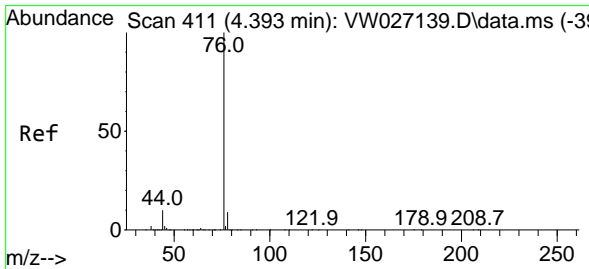
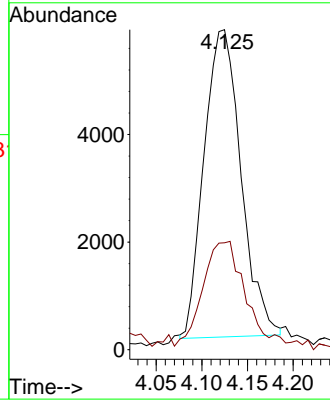
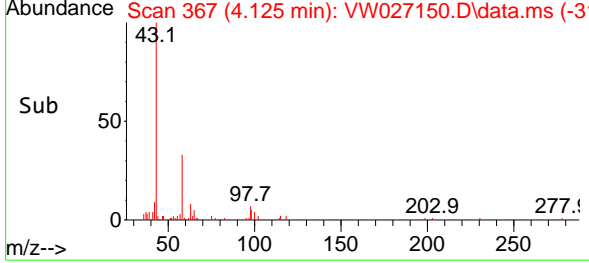
Instrument : MSVOA\_W  
 Client Sample Id : EZYM5



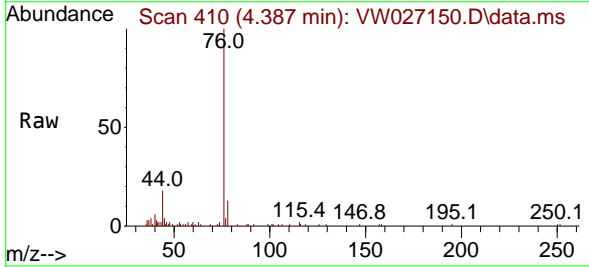
Tgt Ion: 43 Resp: 16100  
 Ion Ratio Lower Upper  
 43 100  
 58 39.9 0.0 77.4

Manual Integrations  
**APPROVED**

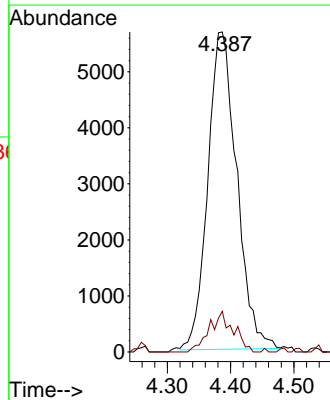
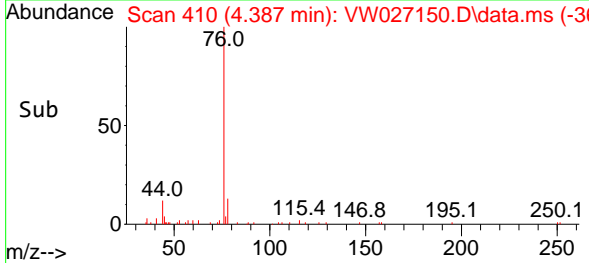
Reviewed By :Semsettin Yesilyurt 09/20/2023  
 Supervised By :Mahesh Dadoda 09/20/2023

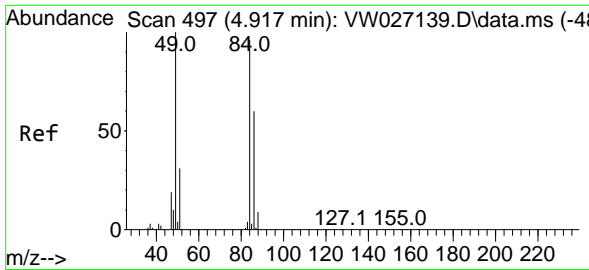


#14  
 Carbon disulfide  
 Concen: 0.869 ug/L  
 RT: 4.387 min Scan# 410  
 Delta R.T. -0.006 min  
 Lab File: VW027150.D  
 Acq: 19 Sep 2023 16:15



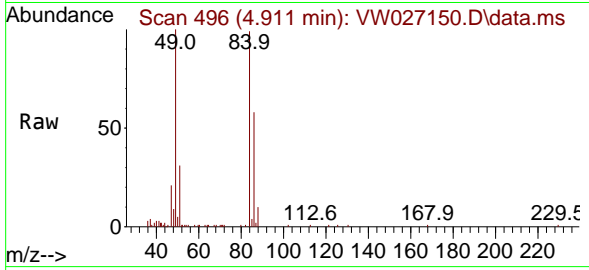
Tgt Ion: 76 Resp: 18004  
 Ion Ratio Lower Upper  
 76 100  
 78 12.7 7.5 11.3





#16  
 Methylene chloride  
 Concen: 4.311 ug/L  
 RT: 4.911 min Scan# 497  
 Delta R.T. -0.006 min  
 Lab File: VW027150.D  
 Acq: 19 Sep 2023 16:15

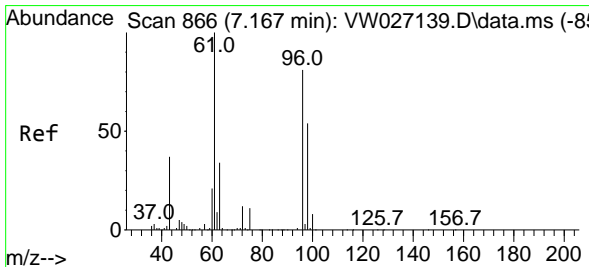
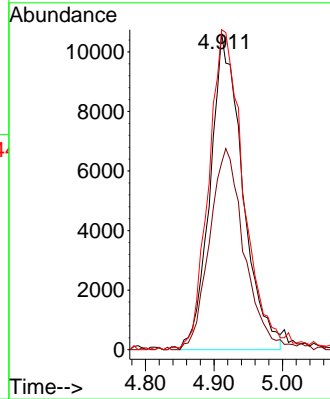
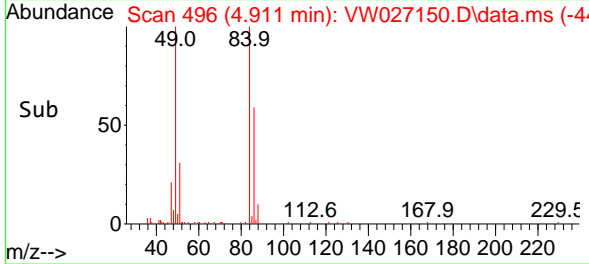
Instrument : MSVOA\_W  
 ClientSampleId : EZYM5



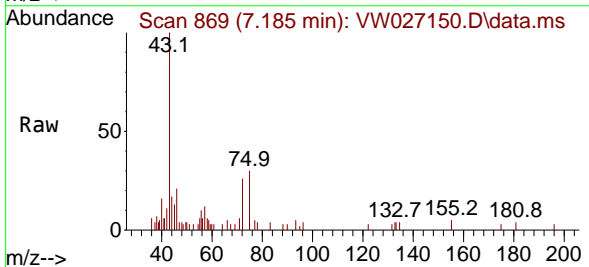
Tgt Ion: 84 Resp: 3495  
 Ion Ratio Lower Upper  
 84 100  
 86 59.1 46.7 86.7  
 49 101.2 77.1 143.1

Manual Integrations  
**APPROVED**

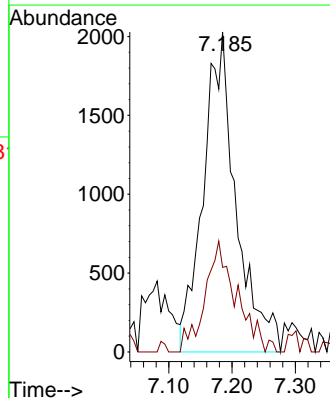
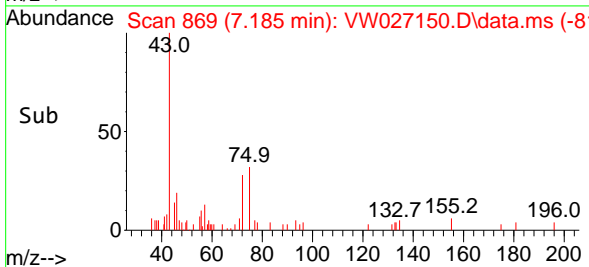
Reviewed By :Semsettin Yesilyurt 09/20/2023  
 Supervised By :Mahesh Dadoda 09/20/2023

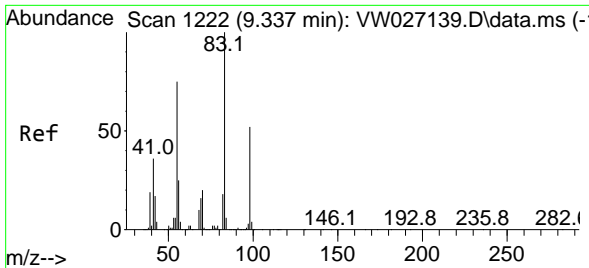


#22  
 2-Butanone  
 Concen: 4.490 ug/L m  
 RT: 7.185 min Scan# 869  
 Delta R.T. 0.019 min  
 Lab File: VW027150.D  
 Acq: 19 Sep 2023 16:15



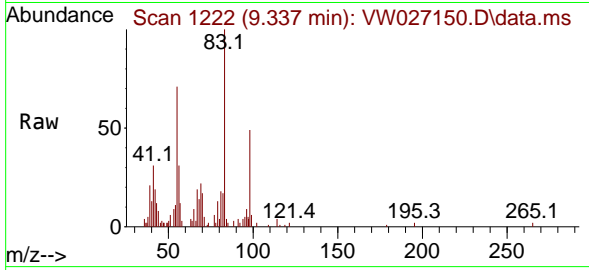
Tgt Ion: 43 Resp: 7276  
 Ion Ratio Lower Upper  
 43 100  
 72 0.0 16.8 50.4#





#35  
 Methylcyclohexane  
 Concen: 0.702 ug/L  
 RT: 9.337 min Scan# 1222  
 Delta R.T. 0.000 min  
 Lab File: VW027150.D  
 Acq: 19 Sep 2023 16:15

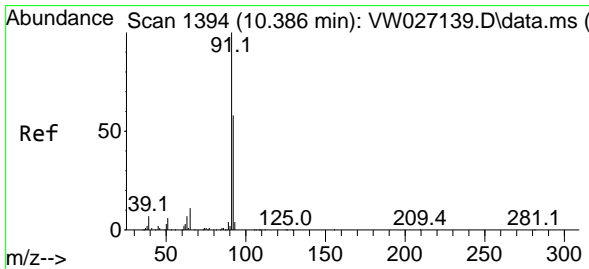
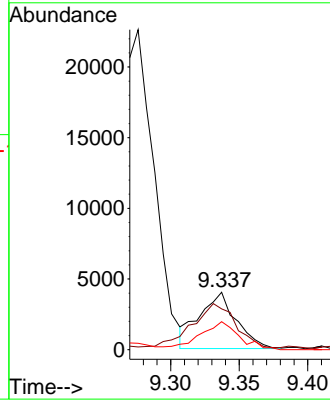
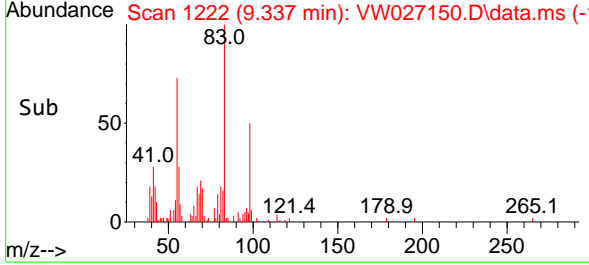
Instrument : MSVOA\_W  
 ClientSampleId : EZYM5



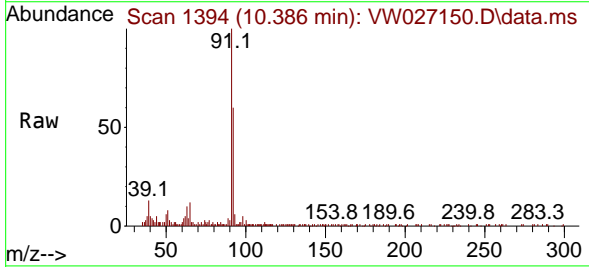
Tgt Ion: 83 Resp: 745  
 Ion Ratio Lower Upper  
 83 100  
 55 92.1 58.0 87.0  
 98 52.3 38.5 57.7

Manual Integrations  
 APPROVED

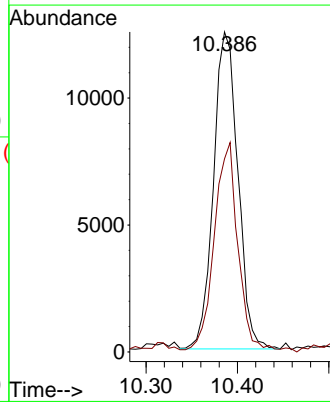
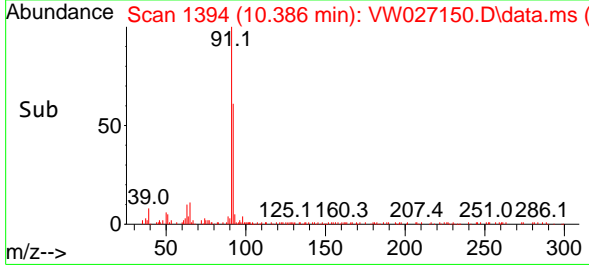
Reviewed By :Semsettin Yesilyurt 09/20/2023  
 Supervised By :Mahesh Dadoda 09/20/2023

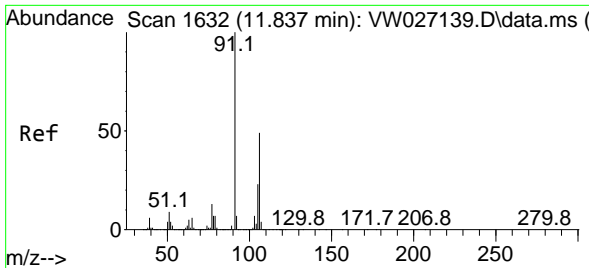


#42  
 Toluene  
 Concen: 0.930 ug/L  
 RT: 10.386 min Scan# 1394  
 Delta R.T. 0.000 min  
 Lab File: VW027150.D  
 Acq: 19 Sep 2023 16:15



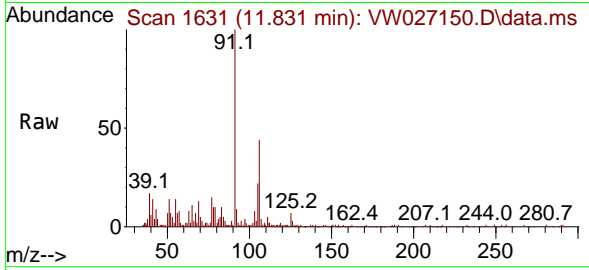
Tgt Ion: 91 Resp: 23142  
 Ion Ratio Lower Upper  
 91 100  
 92 60.4 42.7 79.3





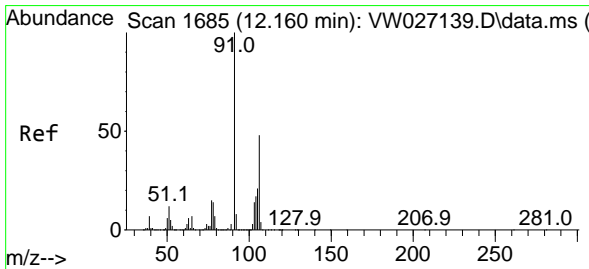
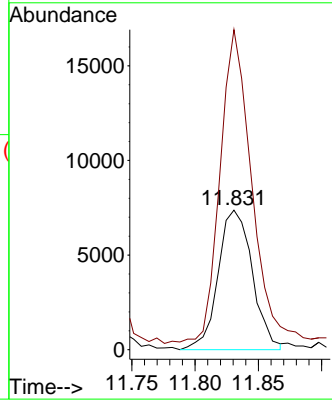
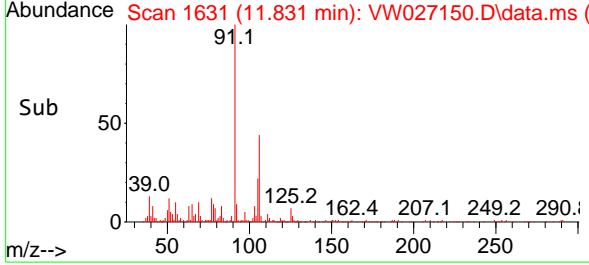
#53  
 m,p-Xylene  
 Concen: 1.326 ug/L  
 RT: 11.831 min Scan# 1631  
 Delta R.T. -0.006 min  
 Lab File: VW027150.D  
 Acq: 19 Sep 2023 16:15

Instrument : MSVOA\_W  
 ClientSampleId : EZYM5

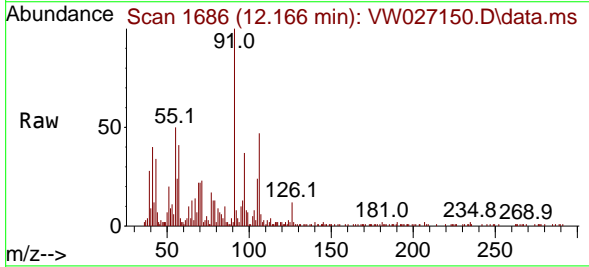


Tgt Ion:106 Resp: 13878  
 Ion Ratio Lower Upper  
 106 100  
 91 229.4 142.7 265.1

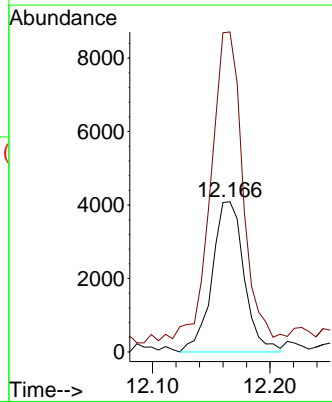
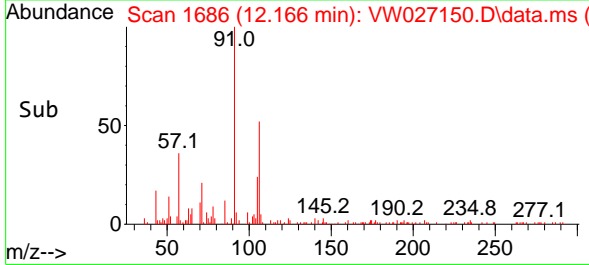
Manual Integrations  
**APPROVED**  
 Reviewed By :Semsettin Yesilyurt 09/20/2023  
 Supervised By :Mahesh Dadoda 09/20/2023

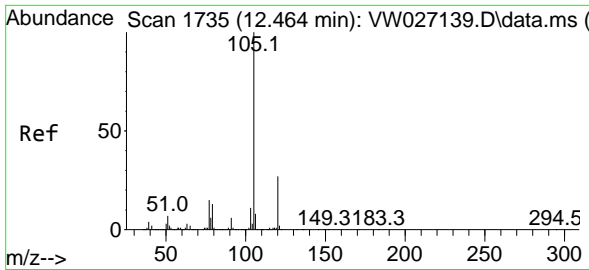


#54  
 o-Xylene  
 Concen: 0.775 ug/L  
 RT: 12.166 min Scan# 1686  
 Delta R.T. 0.006 min  
 Lab File: VW027150.D  
 Acq: 19 Sep 2023 16:15



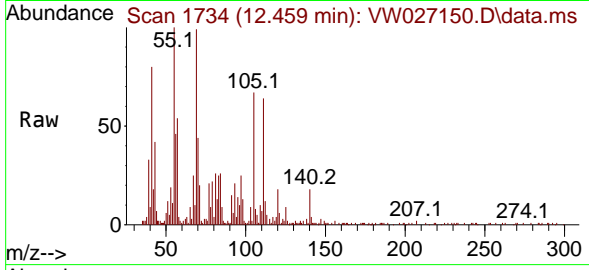
Tgt Ion:106 Resp: 7725  
 Ion Ratio Lower Upper  
 106 100  
 91 212.9 140.6 261.0





#60  
 Isopropylbenzene  
 Concen: 0.860 ug/L m  
 RT: 12.459 min Scan# 1  
 Delta R.T. -0.006 min  
 Lab File: VW027150.D  
 Acq: 19 Sep 2023 16:15

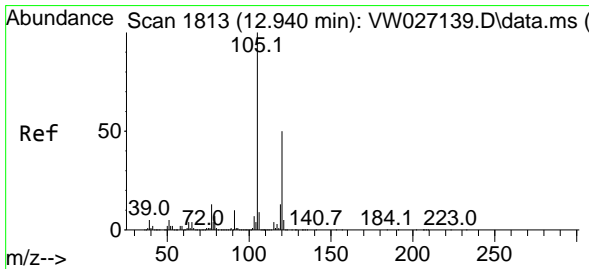
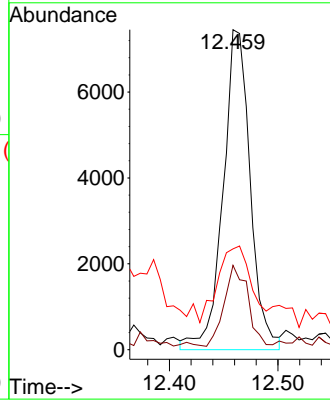
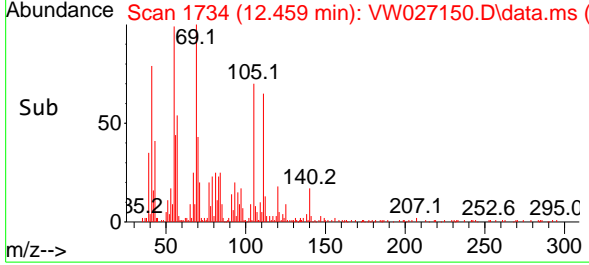
Instrument :  
 MSVOA\_W  
 ClientSampleId :  
 EZYM5



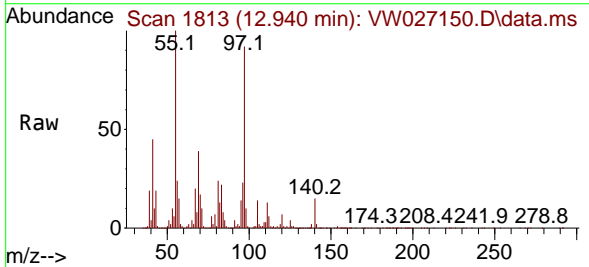
Tgt Ion:105 Resp: 12980  
 Ion Ratio Lower Upper  
 105 100  
 120 27.7 21.0 31.4  
 77 15.7 12.0 18.0

Manual Integrations  
 APPROVED

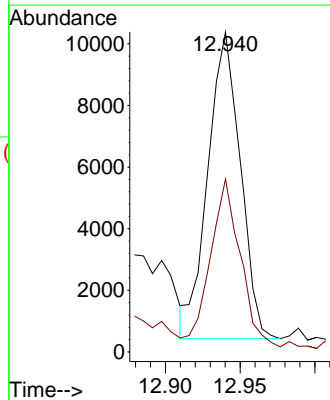
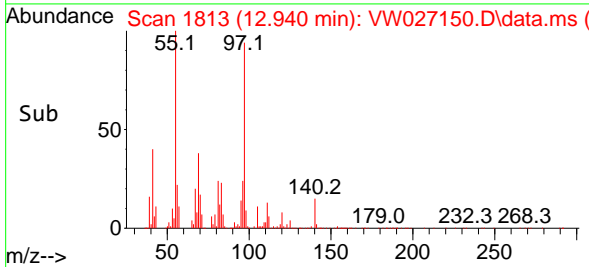
Reviewed By :Semsettin Yesilyurt 09/20/2023  
 Supervised By :Mahesh Dadoda 09/20/2023

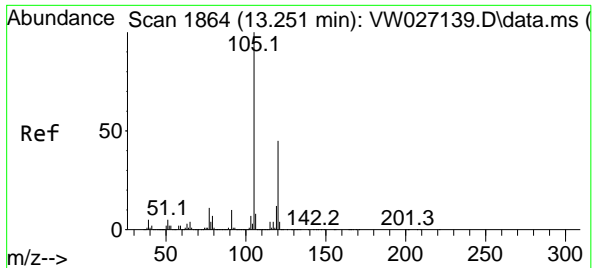


#62  
 1,3,5-Trimethylbenzene  
 Concen: 1.243 ug/L  
 RT: 12.940 min Scan# 1813  
 Delta R.T. 0.000 min  
 Lab File: VW027150.D  
 Acq: 19 Sep 2023 16:15



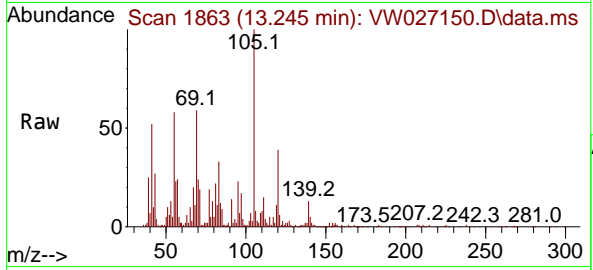
Tgt Ion:105 Resp: 15025  
 Ion Ratio Lower Upper  
 105 100  
 120 50.4 40.5 60.7





#63  
 1,2,4-Trimethylbenzene  
 Concen: 2.707 ug/L  
 RT: 13.245 min Scan# 1863  
 Delta R.T. -0.006 min  
 Lab File: VW027150.D  
 Acq: 19 Sep 2023 16:15

Instrument : MSVOA\_W  
 Client Sample Id : EZYM5



Tgt Ion: 105 Resp: 31694

Ion	Ratio	Lower	Upper
105	100		
120	40.2	36.2	54.2

Manual Integrations  
**APPROVED**  
 Reviewed By : Semsettin Yesilyurt 09/20/2023  
 Supervised By : Mahesh Dadoda 09/20/2023

