

Data Path : Z:\voasrv\HPCHEM1\MSVOA_W\Data\VW091924\
 Data File : VW030148.D
 Acq On : 19 Sep 2024 15:22
 Operator : SY/MD
 Sample : P4083-12
 Misc : 5.41g/10mL/MSVOA_W/SOIL/B
 ALS Vial : 9 Sample Multiplier: 1

Instrument :
 MSVOA_W
 ClientSampleId :

Quant Time: Sep 20 01:30:48 2024
 Quant Method : Z:\voasrv\HPCHEM1\MSVOA_W\Method\SFAMWLM091624SMA.M
 Quant Title : SFAM01.0
 QLast Update : Fri Sep 20 01:21:33 2024
 Response via : Initial Calibration

Compound	R.T.	QIon	Response	Conc	Units	Dev(Min)

Internal Standards						
1) 1,4-Difluorobenzene	8.843	114	377427	25.000	ug/L	0.00
28) Chlorobenzene-d5	11.629	117	249285	25.000	ug/L	0.00
58) 1,4-Dichlorobenzene-d4	13.556	152	58954	25.000	ug/L	0.00
System Monitoring Compounds						
4) Vinyl Chloride-d3	2.369	65	88411	18.139	ug/L	0.00
Spiked Amount	25.000	Range 30 - 150	Recovery =	72.560%		
7) Chloroethane-d5	2.905	69	70490	20.485	ug/L	0.00
Spiked Amount	25.000	Range 30 - 150	Recovery =	81.920%		
11) 1,1-Dichloroethene-d2	4.021	65	49310	20.247	ug/L	0.00
Spiked Amount	25.000	Range 45 - 110	Recovery =	81.000%		
21) 2-Butanone-d5	7.081	46	47363	40.131	ug/L	0.00
Spiked Amount	50.000	Range 20 - 135	Recovery =	80.260%		
24) Chloroform-d	7.648	84	225378	21.718	ug/L	0.00
Spiked Amount	25.000	Range 40 - 150	Recovery =	86.880%		
26) 1,2-Dichloroethane-d4	8.307	65	114451	21.962	ug/L	0.00
Spiked Amount	25.000	Range 70 - 130	Recovery =	87.840%		
32) Benzene-d6	8.276	84	450222	31.350	ug/L	0.00
Spiked Amount	25.000	Range 20 - 135	Recovery =	125.400%		
36) 1,2-Dichloropropane-d6	9.276	67	136839	30.861	ug/L	0.00
Spiked Amount	25.000	Range 70 - 120	Recovery =	123.440%#		
41) Toluene-d8	10.325	98	356727	27.719	ug/L	0.00
Spiked Amount	25.000	Range 30 - 130	Recovery =	110.880%		
43) trans-1,3-Dichloroprop...	10.575	79	43325	24.389	ug/L	0.00
Spiked Amount	25.000	Range 30 - 135	Recovery =	97.560%		
47) 2-Hexanone-d5	10.922	63	40072	59.060	ug/L	0.00
Spiked Amount	50.000	Range 20 - 135	Recovery =	118.120%		
56) 1,1,2,2-Tetrachloroeth...	12.690	84	71383	21.624	ug/L	0.00
Spiked Amount	25.000	Range 45 - 120	Recovery =	86.480%		
66) 1,2-Dichlorobenzene-d4	13.848	152	46078	23.024	ug/L	0.00
Spiked Amount	25.000	Range 75 - 120	Recovery =	92.080%		

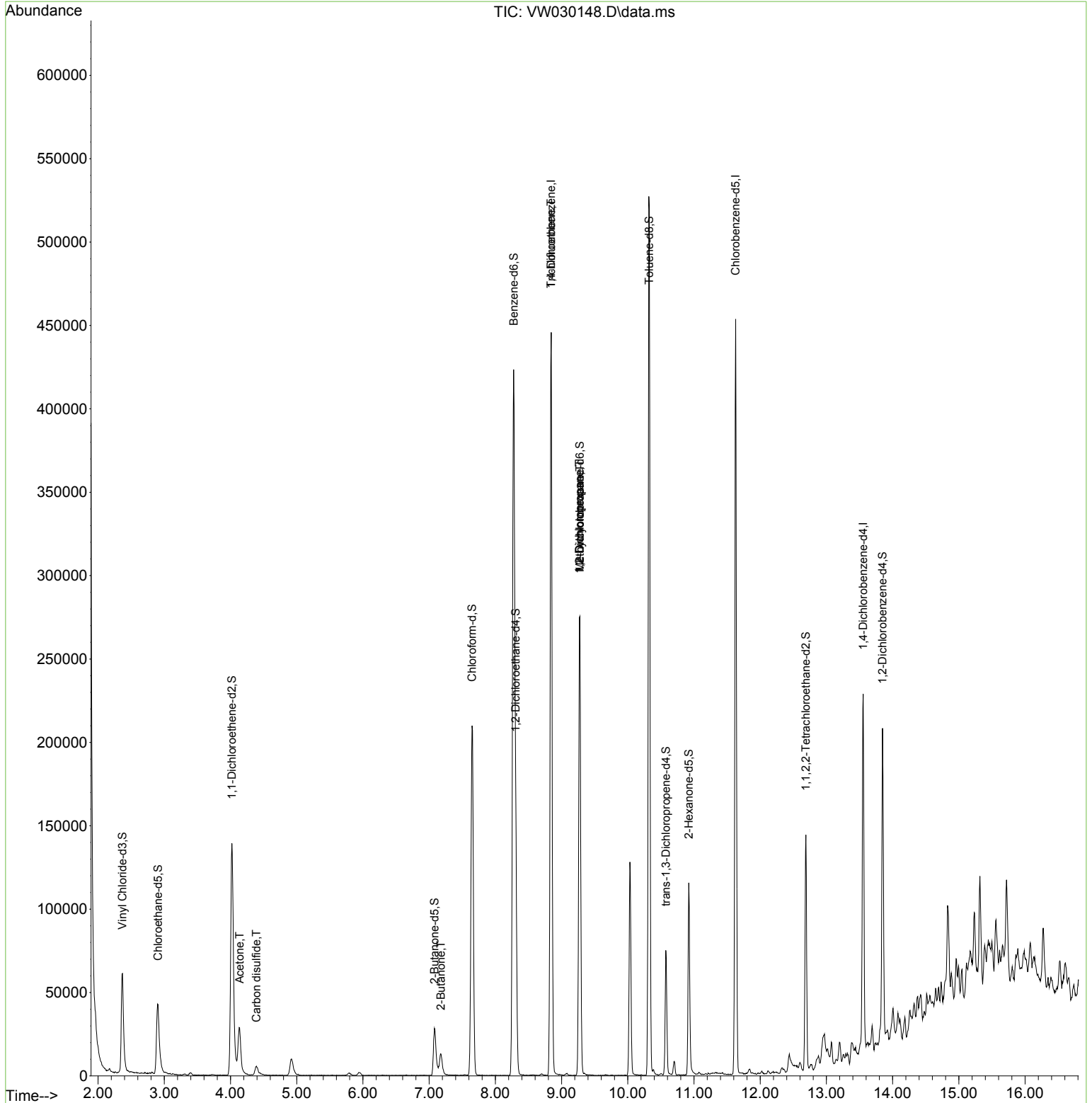
Target Compounds						Qvalue
13) Acetone	4.137	43	48502	35.820	ug/L	97
14) Carbon disulfide	4.393	76	12933	1.011	ug/L	97
22) 2-Butanone	7.179	43	20452	12.760	ug/L	96
34) Trichloroethene	8.843	95	11439	2.780	ug/L #	6
35) Methylcyclohexane	9.276	83	33226	5.238	ug/L #	18
37) 1,2-Dichloropropane	9.270	63	14712	3.561	ug/L #	88

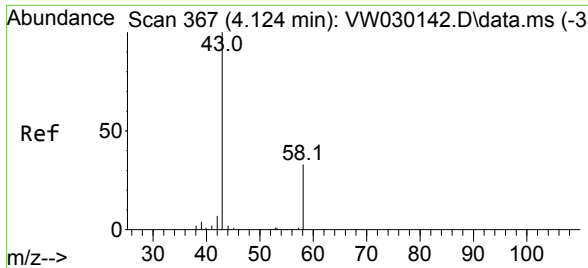
(#) = qualifier out of range (m) = manual integration (+) = signals summed

Data Path : Z:\voasrv\HPCHEM1\MSVOA_W\Data\VW091924\
 Data File : VW030148.D
 Acq On : 19 Sep 2024 15:22
 Operator : SY/MD
 Sample : P4083-12
 Misc : 5.41g/10mL/MSVOA_W/SOIL/B
 ALS Vial : 9 Sample Multiplier: 1

Instrument :
 MSVOA_W
 ClientSampleId :

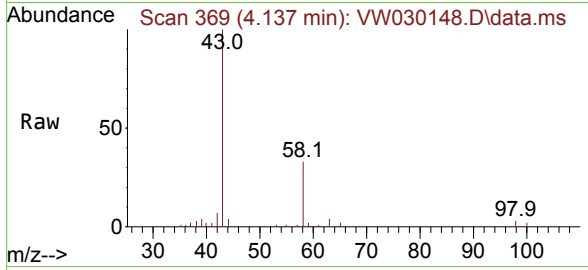
Quant Time: Sep 20 01:30:48 2024
 Quant Method : Z:\voasrv\HPCHEM1\MSVOA_W\Method\SFAMWLM091624SMA.M
 Quant Title : SFAM01.0
 QLast Update : Fri Sep 20 01:21:33 2024
 Response via : Initial Calibration



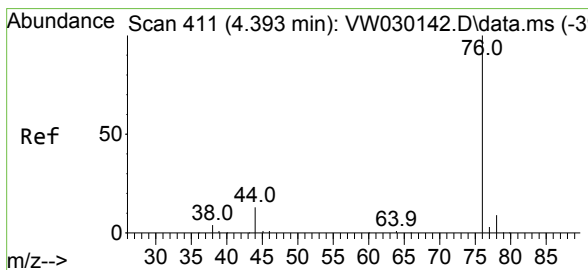
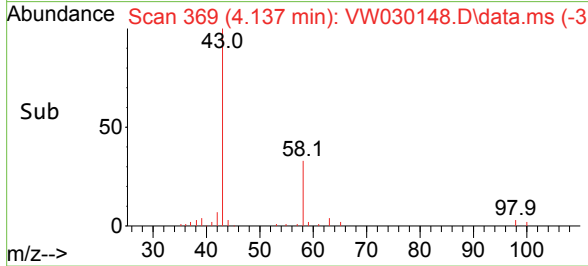
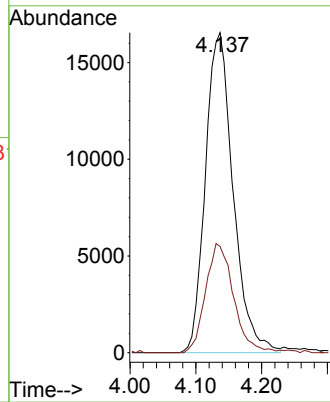


#13
 Acetone
 Concen: 35.820 ug/L
 RT: 4.137 min Scan# 369
 Delta R.T. 0.012 min
 Lab File: VW030148.D
 Acq: 19 Sep 2024 15:22

Instrument : MSVOA_W
 ClientSampleId :

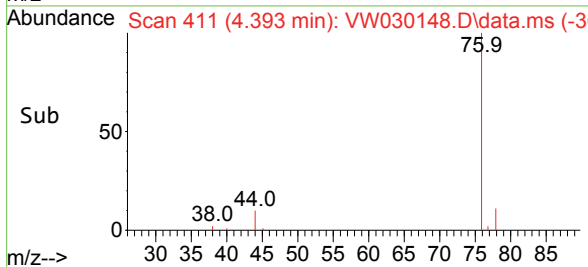
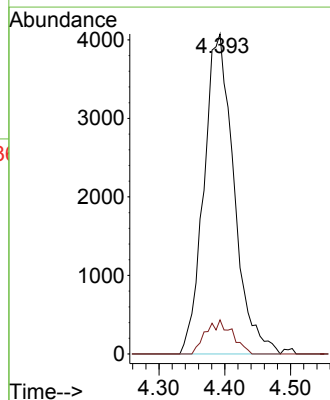
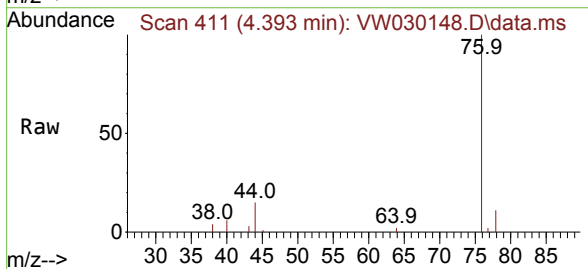


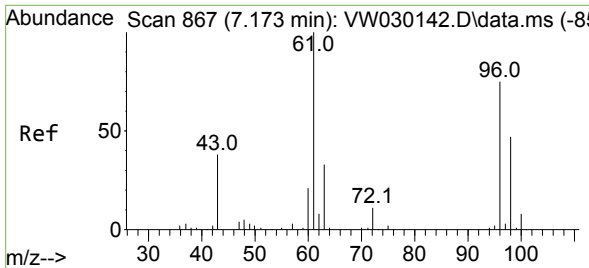
Tgt Ion: 43 Resp: 48502
 Ion Ratio Lower Upper
 43 100
 58 34.0 0.0 65.0



#14
 Carbon disulfide
 Concen: 1.011 ug/L
 RT: 4.393 min Scan# 411
 Delta R.T. -0.000 min
 Lab File: VW030148.D
 Acq: 19 Sep 2024 15:22

Tgt Ion: 76 Resp: 12933
 Ion Ratio Lower Upper
 76 100
 78 10.7 7.6 11.4

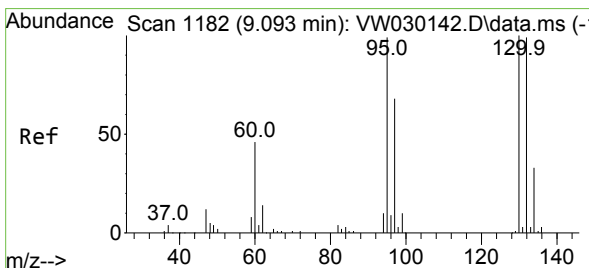
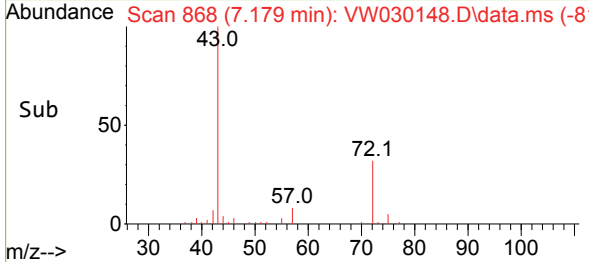
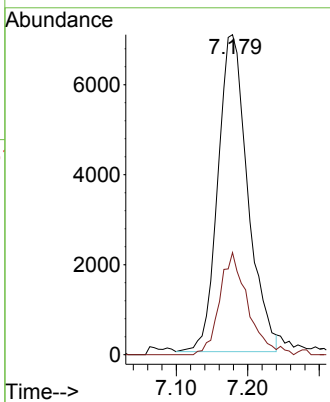
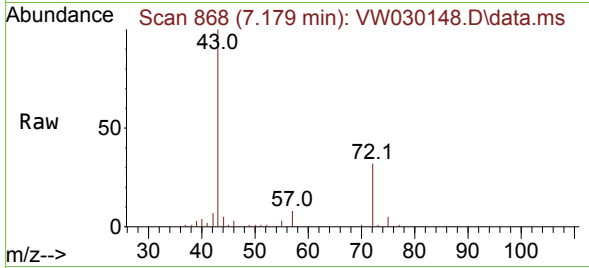




#22
 2-Butanone
 Concen: 12.760 ug/L
 RT: 7.179 min Scan# 80
 Delta R.T. 0.006 min
 Lab File: VW030148.D
 Acq: 19 Sep 2024 15:22

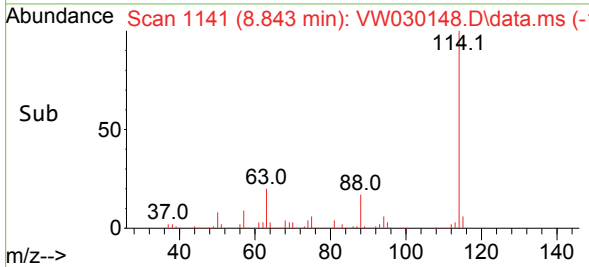
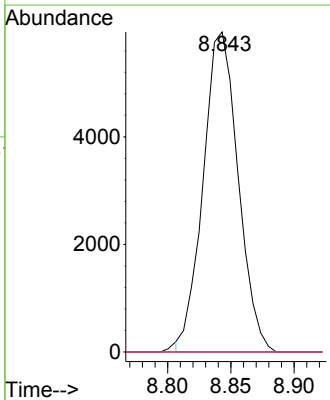
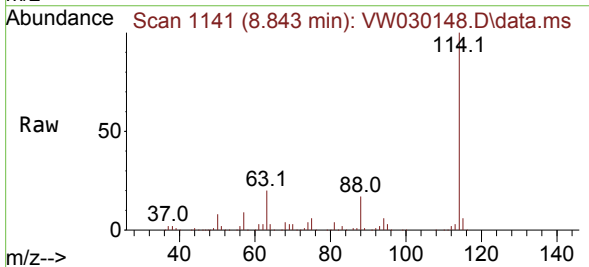
Instrument :
 MSVOA_W
 ClientSampleId :

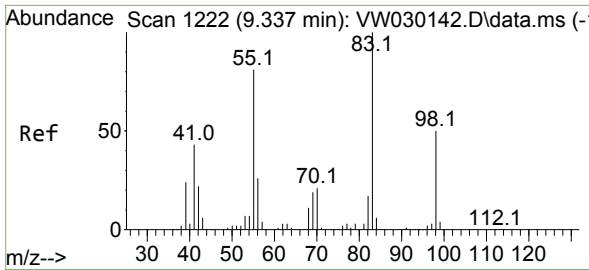
Tgt Ion: 43 Resp: 20452
 Ion Ratio Lower Upper
 43 100
 72 29.7 13.9 41.7



#34
 Trichloroethene
 Concen: 2.780 ug/L
 RT: 8.843 min Scan# 1141
 Delta R.T. -0.250 min
 Lab File: VW030148.D
 Acq: 19 Sep 2024 15:22

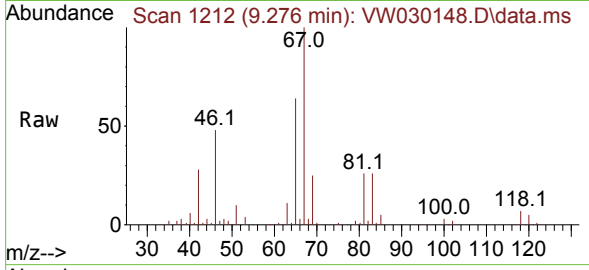
Tgt Ion: 95 Resp: 11439
 Ion Ratio Lower Upper
 95 100
 97 0.0 45.2 84.0#
 132 0.0 64.8 120.3#
 130 0.0 69.8 129.6#



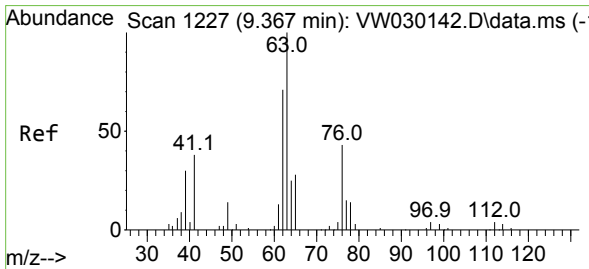
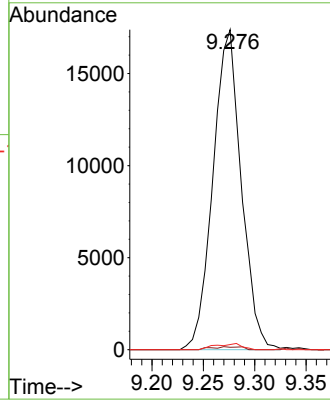
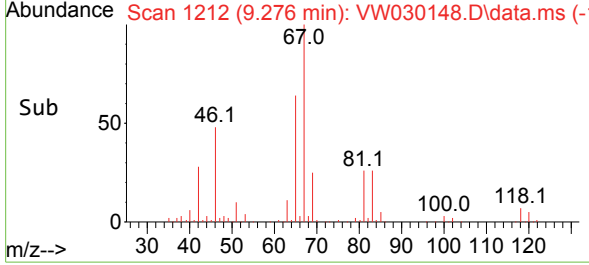


#35
 Methylcyclohexane
 Concen: 5.238 ug/L
 RT: 9.276 min Scan# 1111
 Delta R.T. -0.061 min
 Lab File: VW030148.D
 Acq: 19 Sep 2024 15:22

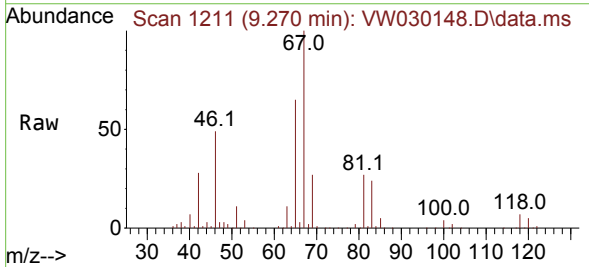
Instrument :
 MSVOA_W
 ClientSampleId :



Tgt Ion: 83 Resp: 33226
 Ion Ratio Lower Upper
 83 100
 55 0.3 63.0 94.6#
 98 0.9 38.7 58.1#



#37
 1,2-Dichloropropane
 Concen: 3.561 ug/L
 RT: 9.270 min Scan# 1211
 Delta R.T. -0.098 min
 Lab File: VW030148.D
 Acq: 19 Sep 2024 15:22



Tgt Ion: 63 Resp: 14712
 Ion Ratio Lower Upper
 63 100
 112 0.3 3.5 5.3#

