

Data Path : Z:\VOASRV\HPCHEM1\MSVOA W\DATA\VW092218\
 Data File : VW005555.D
 Acq On : 21 Sep 2018 13:06
 Operator : VA/AP
 Sample : J5021-01RE
 Misc : 6.37G/5ML/MSVOA W/SOIL
 ALS Vial : 7 Sample Multiplier: 1

Instrument :
 MSVOA_W
 ClientSampleId :

Quant Time: Sep 21 14:52:45 2018
 Quant Method : Z:\VOASRV\HPCHEM1\MSVOA_W\METHOD\82W092118S.M
 Quant Title : SW846 8260
 QLast Update : Fri Sep 21 09:05:42 2018
 Response via : Initial Calibration

Internal Standards	R.T.	QIon	Response	Conc	Units	Dev(Min)
1) Pentafluorobenzene	7.96	168	171332	50.00	ug/l	0.00
34) 1,4-Difluorobenzene	8.85	114	271707	50.00	ug/l	0.00
63) Chlorobenzene-d5	11.64	117	251827	50.00	ug/l	0.00
72) 1,4-Dichlorobenzene-d4	13.57	152	104600	50.00	ug/l	0.00

System Monitoring Compounds

33) 1,2-Dichloroethane-d4	8.31	65	89815	44.50	ug/l	0.00
Spiked Amount				50.000		
			Recovery	=		89.00%
35) Dibromofluoromethane	7.89	113	75516	44.20	ug/l	0.00
Spiked Amount				50.000		
			Recovery	=		88.40%
50) Toluene-d8	10.33	98	272794	39.21	ug/l	0.00
Spiked Amount				50.000		
			Recovery	=		78.42%
62) 4-Bromofluorobenzene	12.62	95	85695	33.29	ug/l	0.00
Spiked Amount				50.000		
			Recovery	=		66.58%

Target Compounds

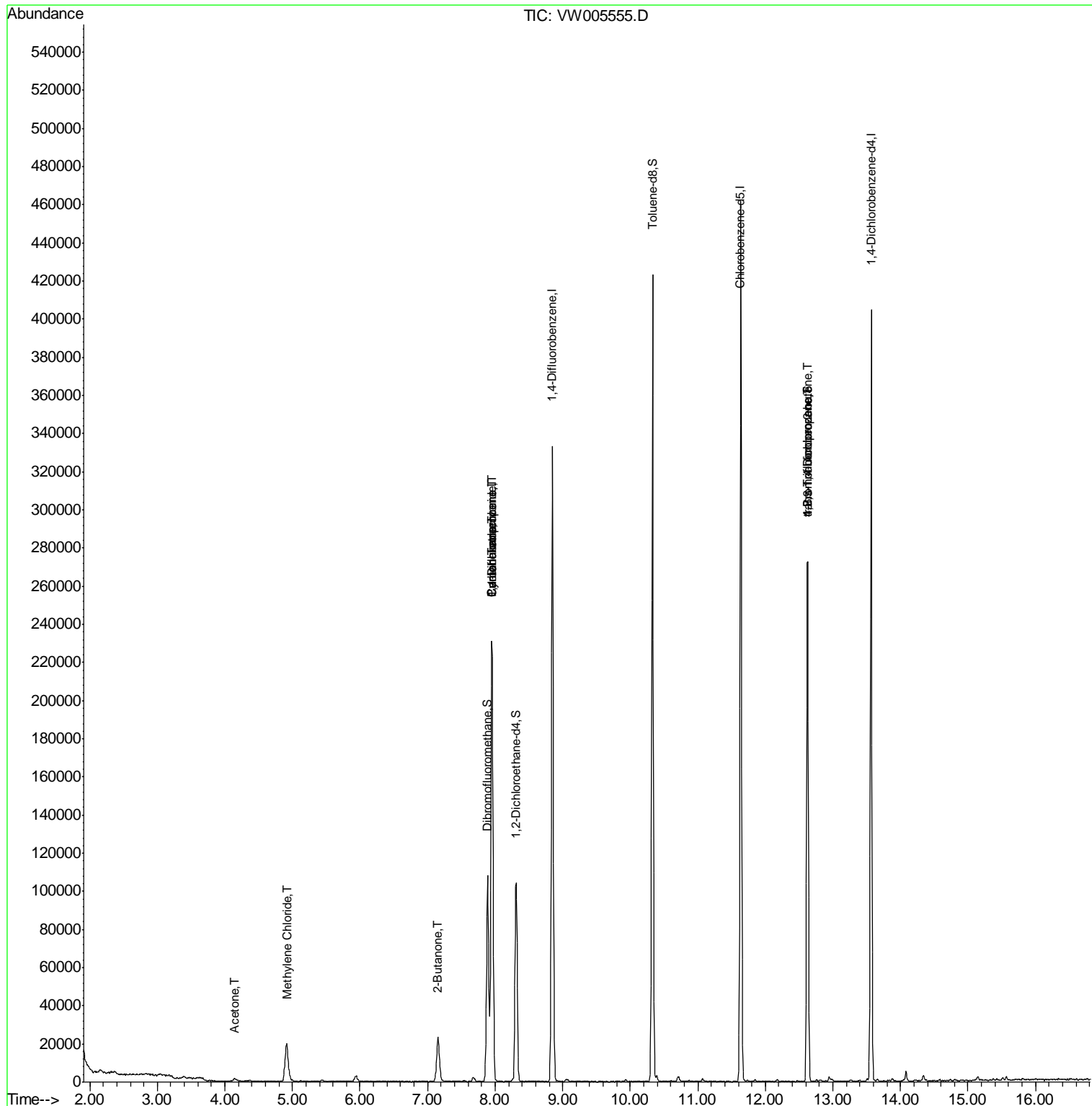
					Qvalue	
2) Dichlorodifluoromethane	2.01	85	100	Below Cal	#	41
11) Tert butyl alcohol	5.23	59	207	Below Cal	#	72
16) Acetone	4.15	43	3330	1.099	ug/l	93
20) Methylene Chloride	4.91	84	15341	5.232	ug/l	94
25) 2-Butanone	7.15	43	1769	3.609	ug/l	# 50
31) Cyclohexane	7.95	56	3970	1.269	ug/l	# 1
36) 1,1-Dichloropropene	7.95	75	12814	4.685	ug/l	# 50
38) Carbon Tetrachloride	7.95	117	17438	5.950	ug/l	# 18
76) 1,2,3-Trichloropropane	12.62	75	45110	50.592	ug/l	# 100
81) trans-1,4-Dichloro-2-buten	12.62	75	45110	113.948	ug/l	# 7

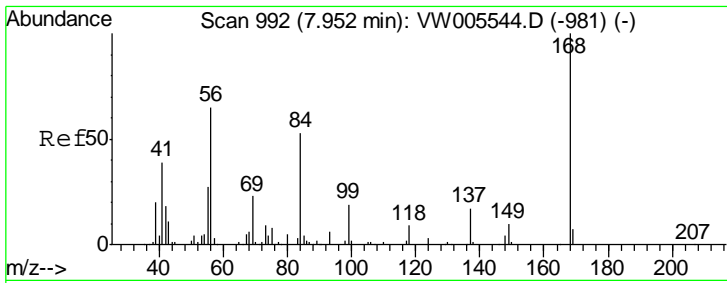
(#) = qualifier out of range (m) = manual integration (+) = signals summed

Data Path : Z:\VOASRV\HPCHEM1\MSVOA W\DATA\VW092218\
 Data File : VW005555.D
 Acq On : 21 Sep 2018 13:06
 Operator : VA/AP
 Sample : J5021-01RE
 Misc : 6.37G/5ML/MSVOA W/SOIL
 ALS Vial : 7 Sample Multiplier: 1

Instrument :
 MSVOA_W
 ClientSampled :

Quant Time: Sep 21 14:52:45 2018
 Quant Method : Z:\VOASRV\HPCHEM1\MSVOA_W\METHOD\82W092118S.M
 Quant Title : SW846 8260
 QLast Update : Fri Sep 21 09:05:42 2018
 Response via : Initial Calibration

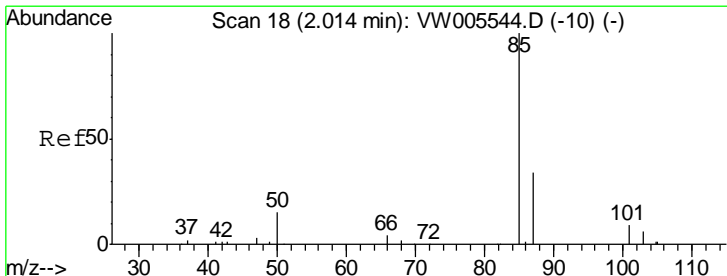
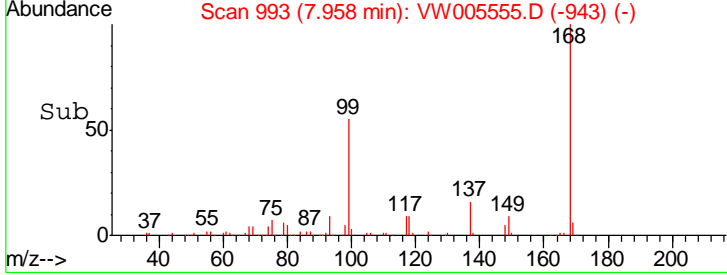
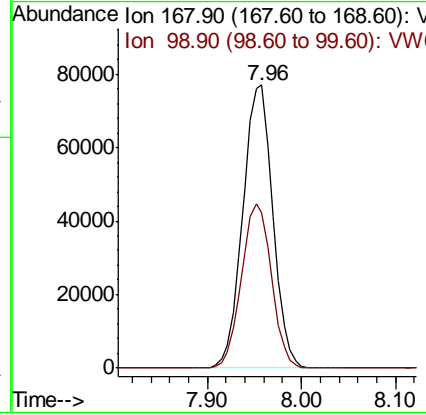
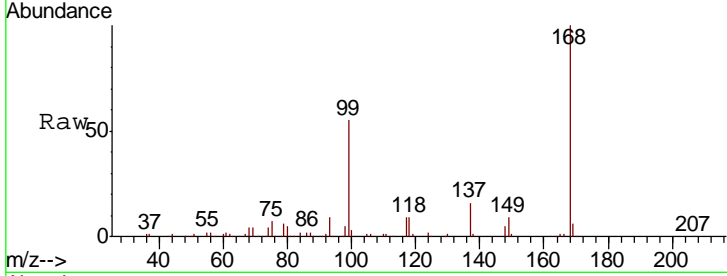




#1
 Pentafluorobenzene
 Concen: 50.000 ug/l
 RT: 7.96 min Scan# 993
 Delta R.T. 0.01 min
 Lab File: VW005555.D
 Acq: 21 Sep 2018 13:06

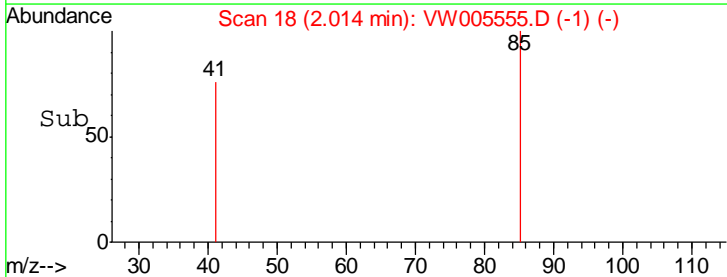
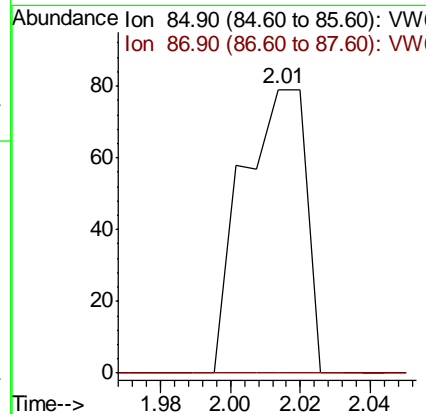
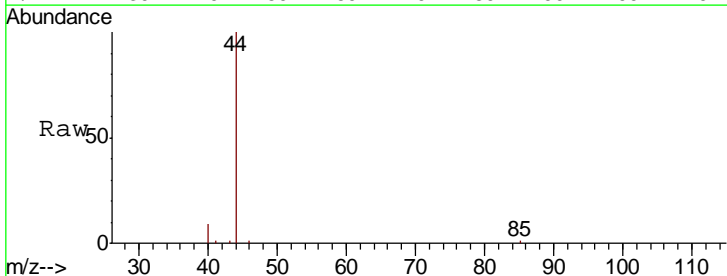
Instrument :
 MSVOA_W
 ClientSampled :

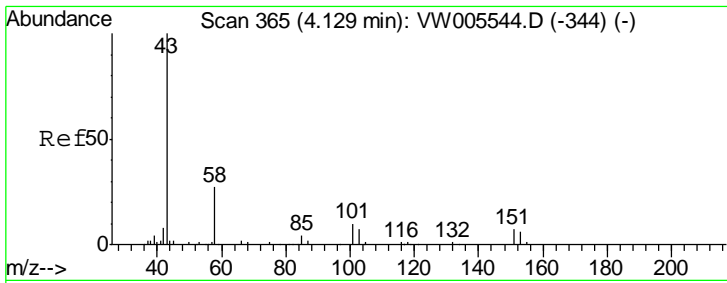
Tgt Ion: 168 Resp: 171332
 Ion Ratio Lower Upper
 168 100
 99 54.9 48.4 72.6



#2
 Dichlorodifluoromethane
 Concen: Below Cal
 RT: 2.01 min Scan# 18
 Delta R.T. 0.00 min
 Lab File: VW005555.D
 Acq: 21 Sep 2018 13:06

Tgt Ion: 85 Resp: 100
 Ion Ratio Lower Upper
 85 100
 87 0.0 17.0 50.9#



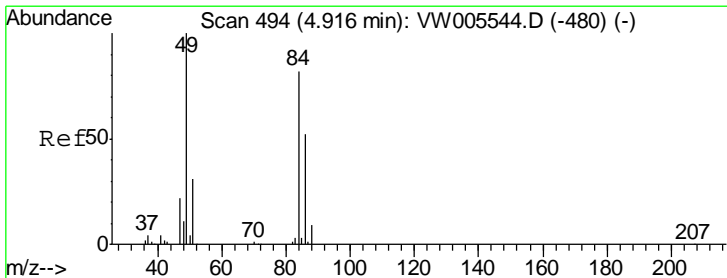
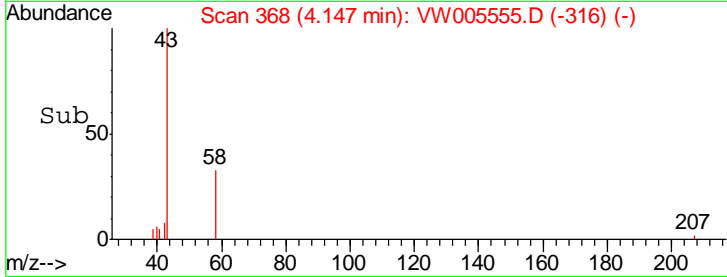
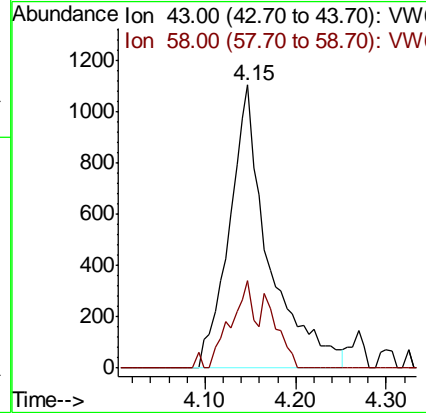
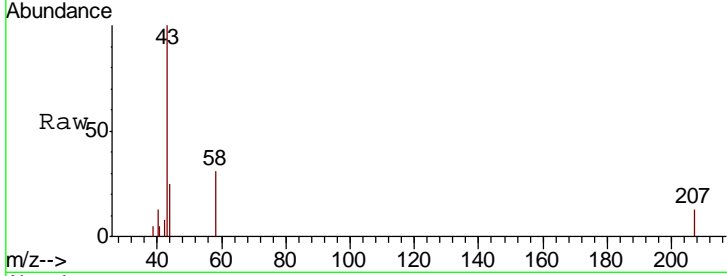


#16
 Acetone
 Concen: 1.099 ug/l
 RT: 4.15 min Scan# 368
 Delta R.T. 0.02 min
 Lab File: VW005555.D
 Acq: 21 Sep 2018 13:06

Instrument :
 MSVOA_W
 ClientSampled :

Tgt Ion: 43 Resp: 3330

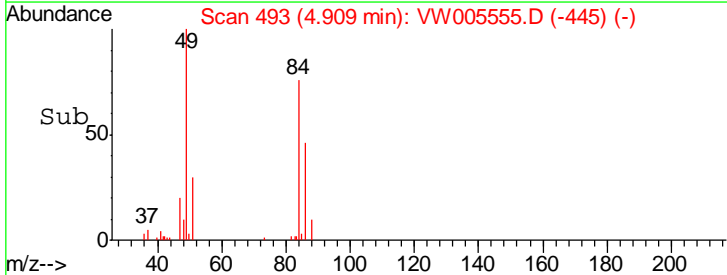
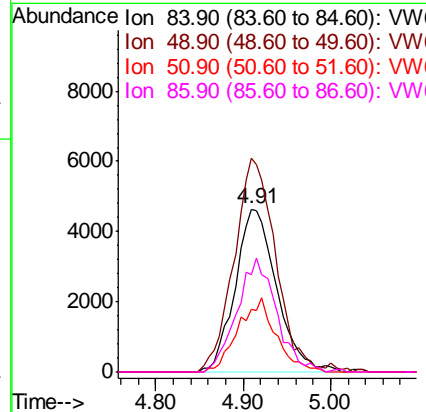
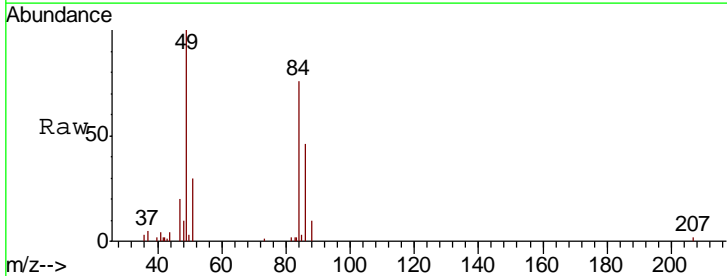
Ion	Ratio	Lower	Upper
43	100		
58	31.1	21.8	32.8

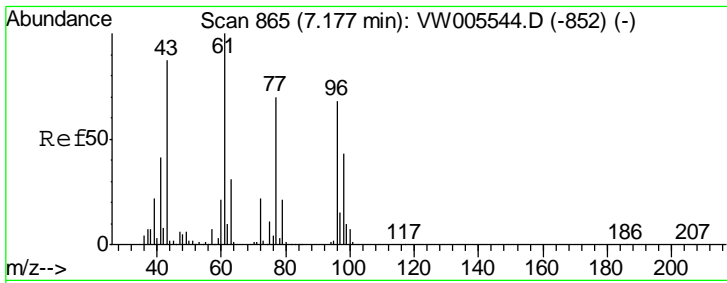


#20
 Methylene Chloride
 Concen: 5.232 ug/l
 RT: 4.91 min Scan# 493
 Delta R.T. -0.01 min
 Lab File: VW005555.D
 Acq: 21 Sep 2018 13:06

Tgt Ion: 84 Resp: 15341

Ion	Ratio	Lower	Upper
84	100		
49	131.3	97.0	145.6
51	38.9	30.2	45.2
86	60.1	50.2	75.4

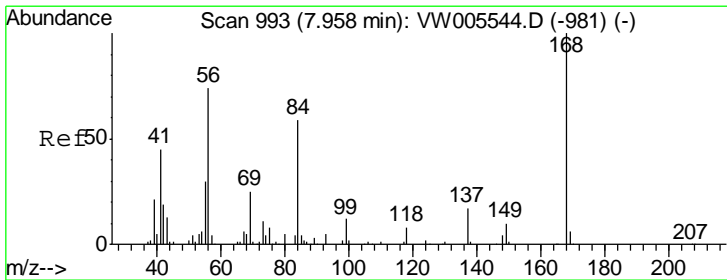
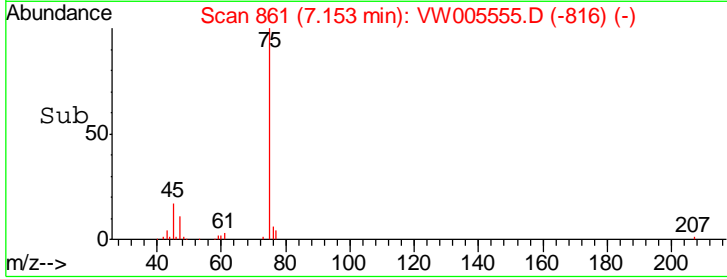
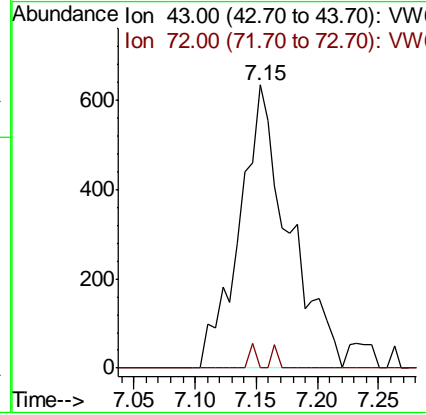
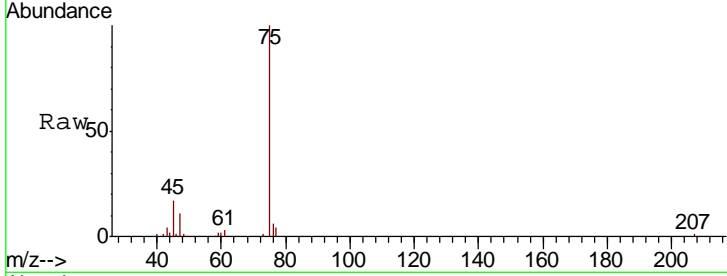




#25
 2-Butanone
 Concen: 3.609 ug/l
 RT: 7.15 min Scan# 861
 Delta R.T. -0.02 min
 Lab File: VW005555.D
 Acq: 21 Sep 2018 13:06

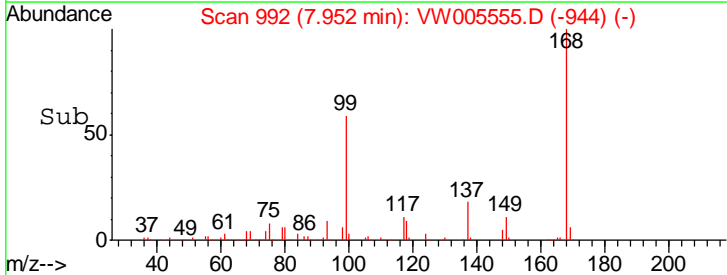
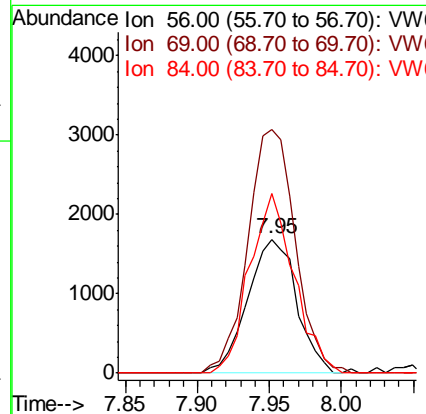
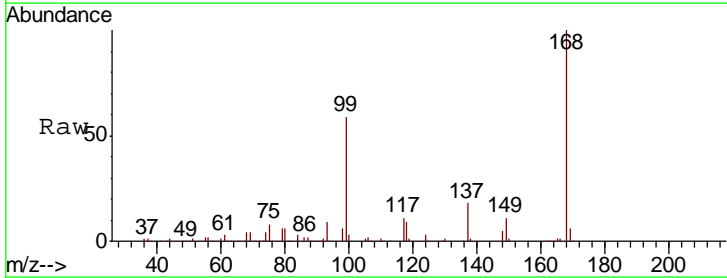
Instrument :
 MSVOA_W
 ClientSampled :

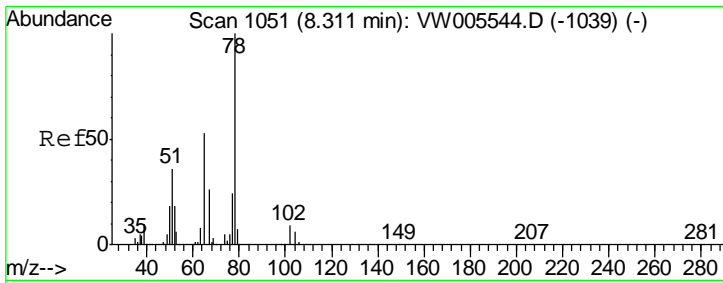
Tgt Ion	Resp	Lower	Upper
43	1769		
72	0.0	19.9	29.9#



#31
 Cyclohexane
 Concen: 1.269 ug/l
 RT: 7.95 min Scan# 992
 Delta R.T. -0.01 min
 Lab File: VW005555.D
 Acq: 21 Sep 2018 13:06

Tgt Ion	Resp	Lower	Upper
56	3970		
69	182.1	27.0	40.4#
84	134.8	64.2	96.4#

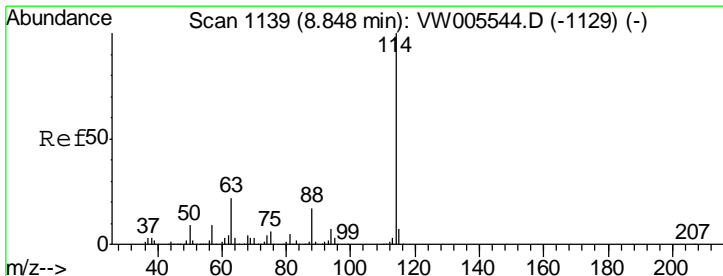
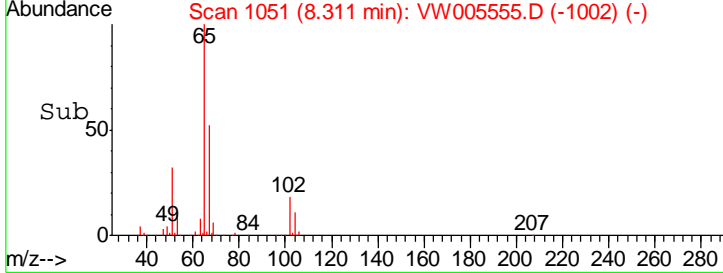
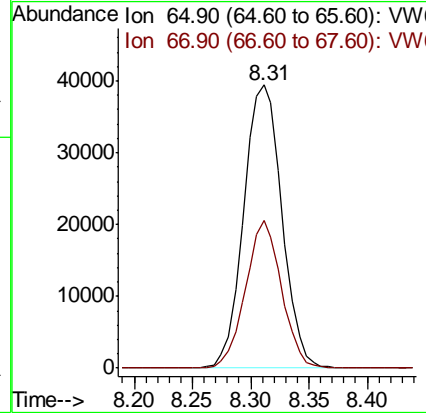
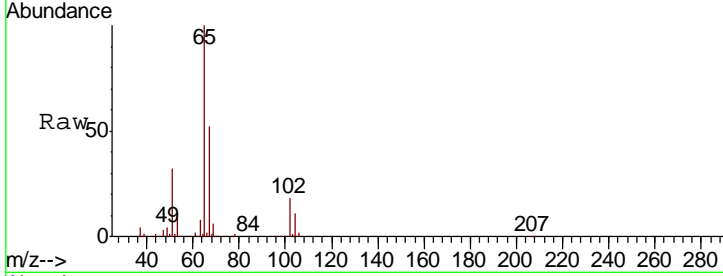




#33
 1,2-Dichloroethane-d4
 Concen: 44.498 ug/l
 RT: 8.31 min Scan# 1051
 Delta R.T. -0.00 min
 Lab File: VW005555.D
 Acq: 21 Sep 2018 13:06

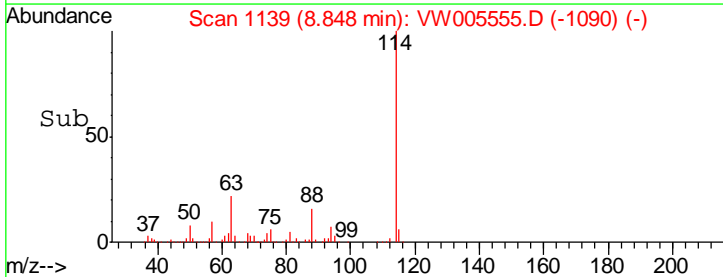
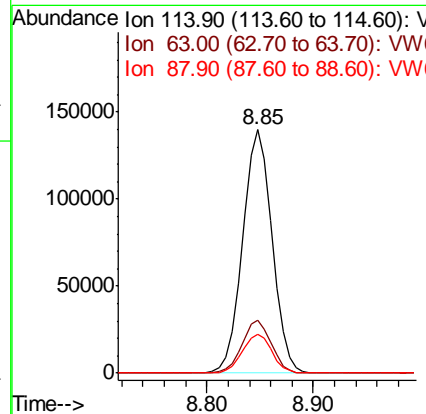
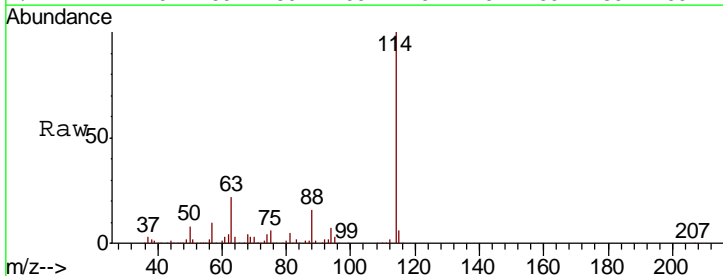
Instrument :
 MSVOA_W
 ClientSampled :

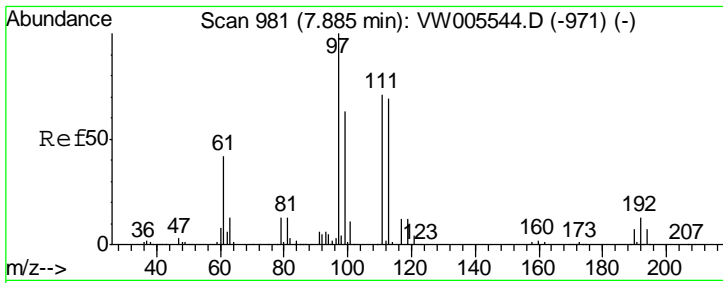
Tgt Ion	Resp	Lower	Upper
65	100		
67	49.0	0.0	100.6



#34
 1,4-Difluorobenzene
 Concen: 50.000 ug/l
 RT: 8.85 min Scan# 1139
 Delta R.T. -0.00 min
 Lab File: VW005555.D
 Acq: 21 Sep 2018 13:06

Tgt Ion	Resp	Lower	Upper
114	100		
63	21.5	0.0	43.0
88	15.7	0.0	33.0

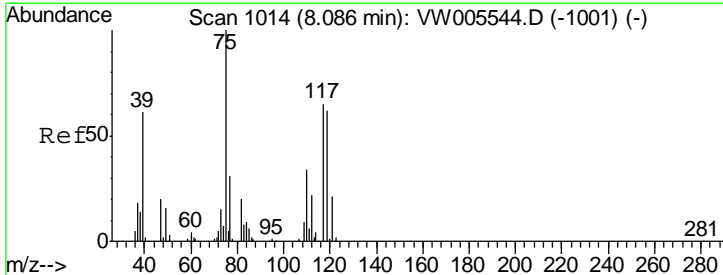
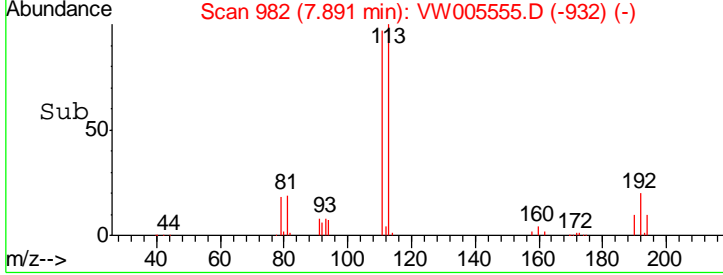
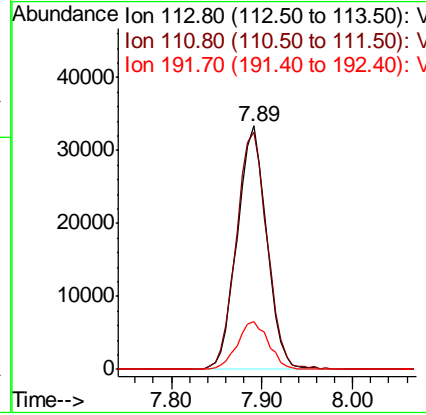
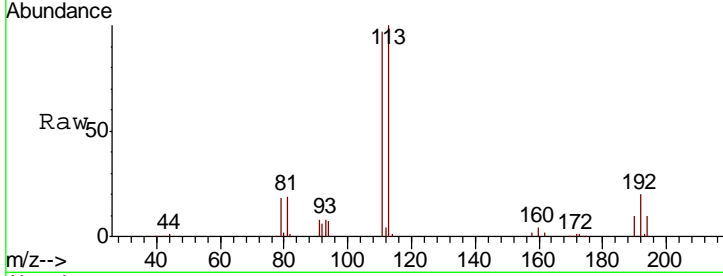




#35
 Dibromofluoromethane
 Concen: 44.196 ug/l
 RT: 7.89 min Scan# 982
 Delta R.T. 0.01 min
 Lab File: VW005555.D
 Acq: 21 Sep 2018 13:06

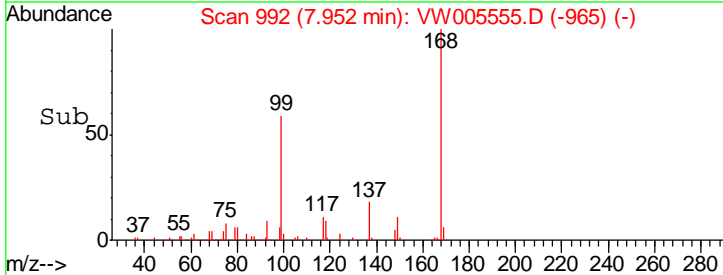
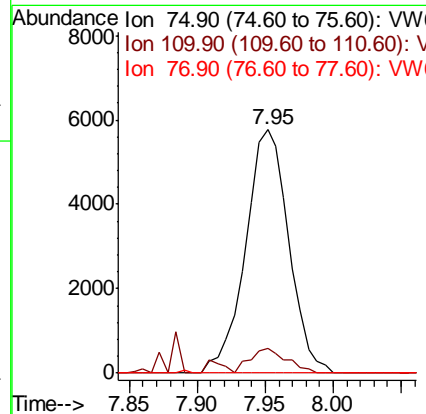
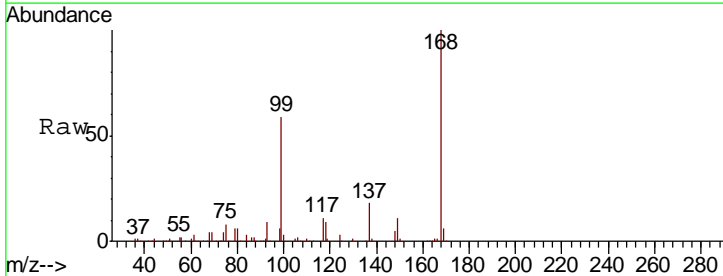
Instrument :
 MSVOA_W
 ClientSampled :

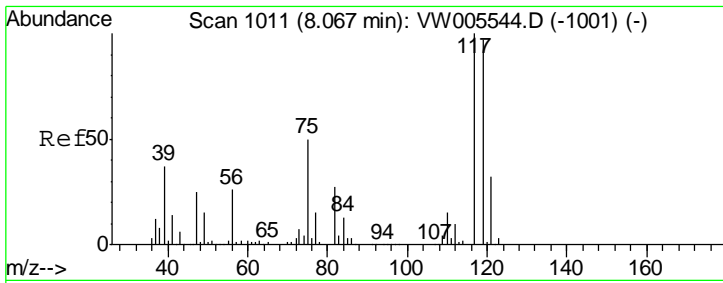
Tgt Ion	Resp	Lower	Upper
113	7516		
111	101.7	82.6	123.8
192	20.7	17.0	25.4



#36
 1,1-Dichloropropene
 Concen: 4.685 ug/l
 RT: 7.95 min Scan# 992
 Delta R.T. -0.13 min
 Lab File: VW005555.D
 Acq: 21 Sep 2018 13:06

Tgt Ion	Resp	Lower	Upper
75	12814		
110	8.6	17.0	50.9#
77	0.0	24.8	37.2#

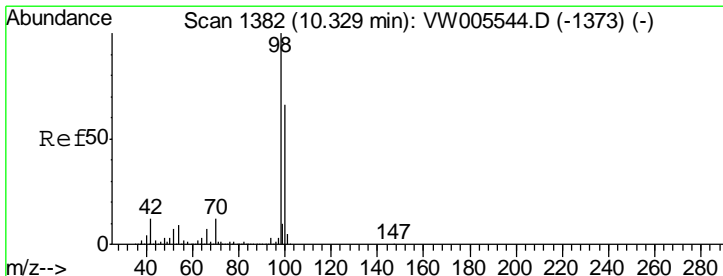
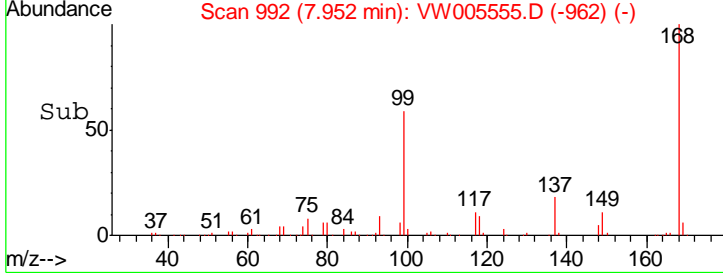
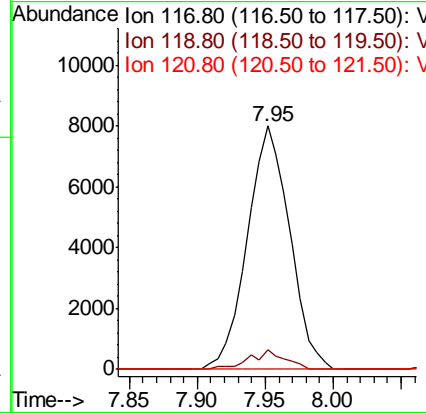
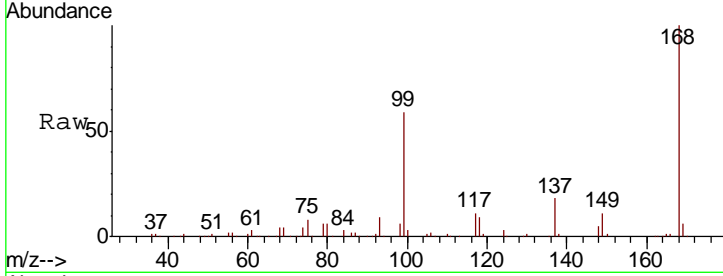




#38
 Carbon Tetrachloride
 Concen: 5.950 ug/l
 RT: 7.95 min Scan# 992
 Delta R.T. -0.12 min
 Lab File: VW005555.D
 Acq: 21 Sep 2018 13:06

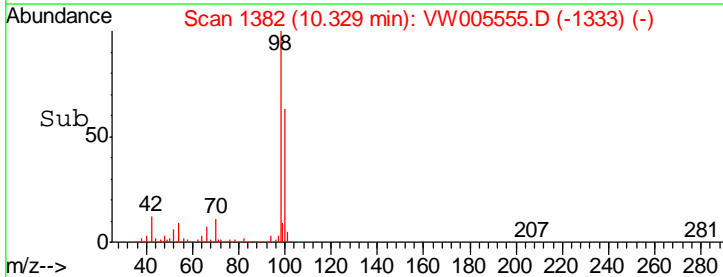
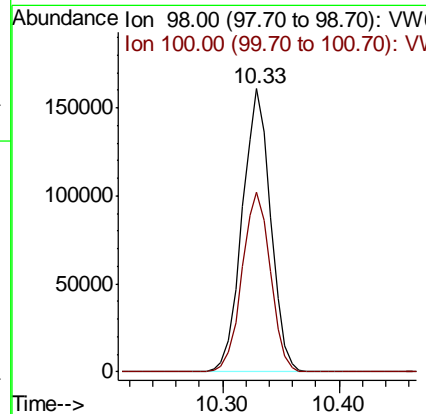
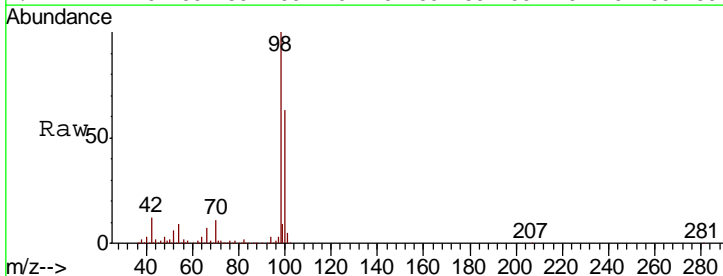
Instrument :
 MSVOA_W
 ClientSampled :

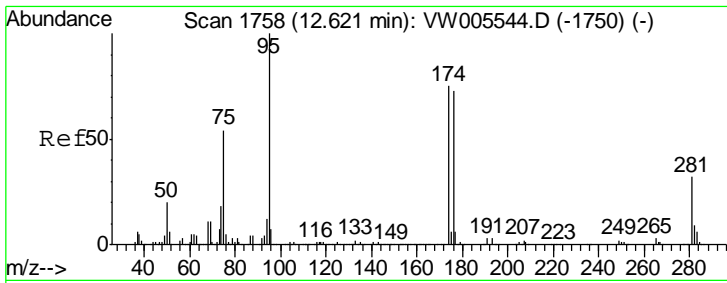
Tgt Ion	Resp	Lower	Upper
117	17438		
119	8.0	77.6	116.4#
121	0.0	25.7	38.5#



#50
 Toluene-d8
 Concen: 39.210 ug/l
 RT: 10.33 min Scan# 1382
 Delta R.T. -0.00 min
 Lab File: VW005555.D
 Acq: 21 Sep 2018 13:06

Tgt Ion	Resp	Lower	Upper
98	272794		
100	63.8	51.6	77.4

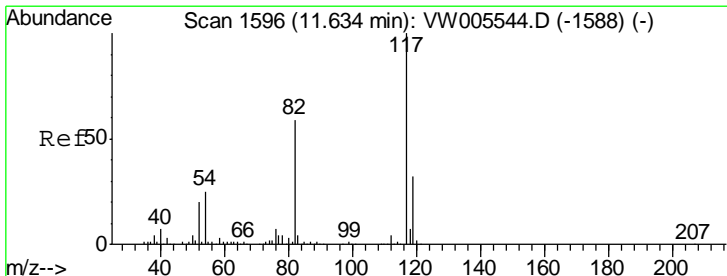
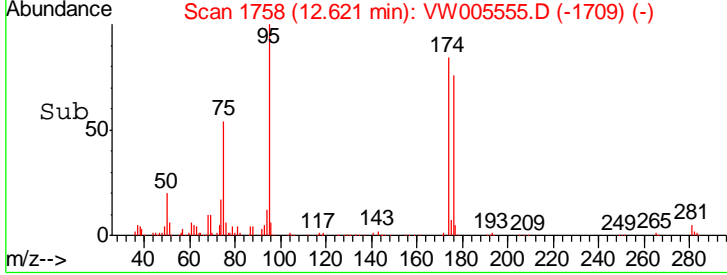
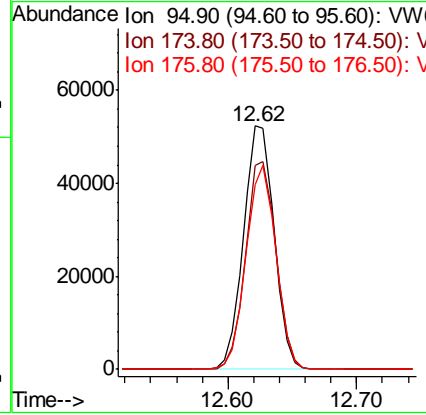
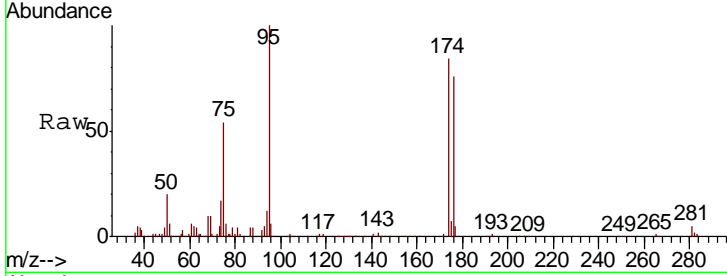




#62
 4-Bromofluorobenzene
 Concen: 33.288 ug/l
 RT: 12.62 min Scan# 1758
 Delta R.T. -0.00 min
 Lab File: VW005555.D
 Acq: 21 Sep 2018 13:06

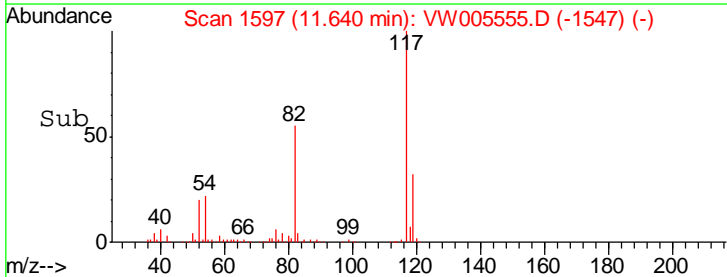
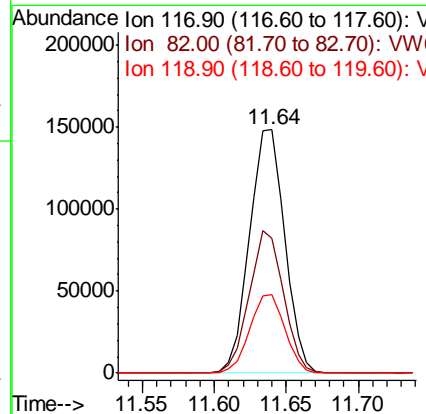
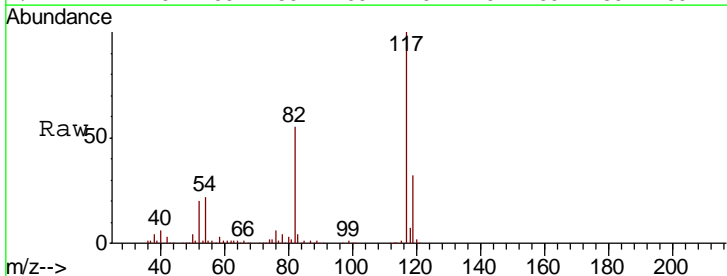
Instrument :
 MSVOA_W
 ClientSampled :

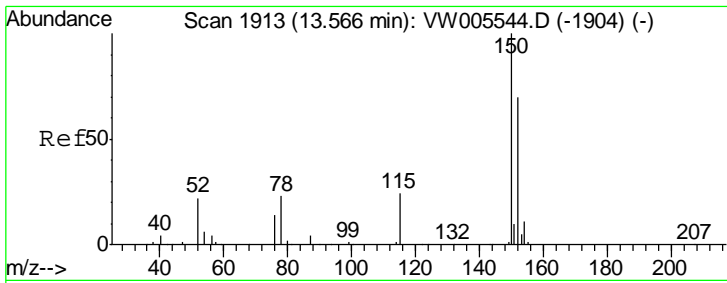
Tgt Ion	Resp	Lower	Upper
95	100		
174	85.1	0.0	163.8
176	81.7	0.0	158.0



#63
 Chlorobenzene-d5
 Concen: 50.000 ug/l
 RT: 11.64 min Scan# 1597
 Delta R.T. 0.01 min
 Lab File: VW005555.D
 Acq: 21 Sep 2018 13:06

Tgt Ion	Resp	Lower	Upper
117	100		
82	55.4	46.9	70.3
119	32.0	25.7	38.5

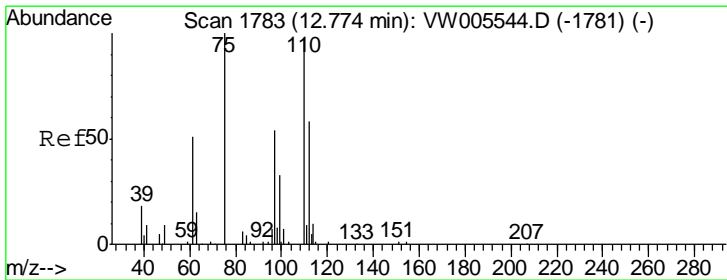
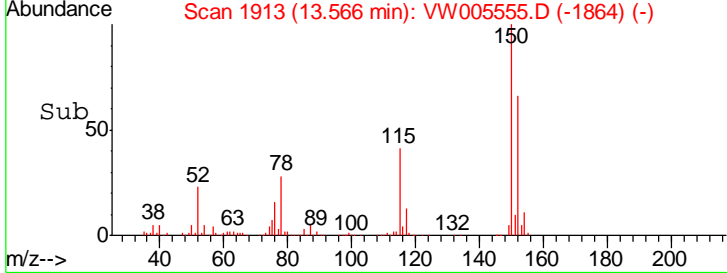
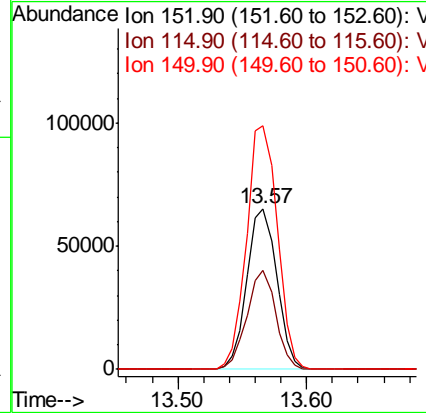
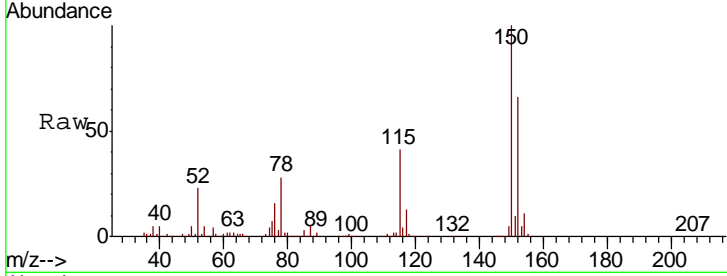




#72
 1,4-Dichlorobenzene-d4
 Concen: 50.000 ug/l
 RT: 13.57 min Scan# 1913
 Delta R.T. -0.00 min
 Lab File: VW005555.D
 Acq: 21 Sep 2018 13:06

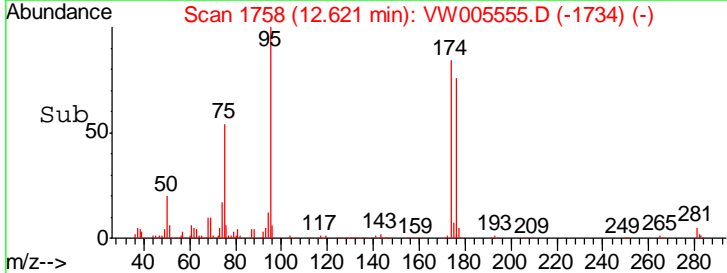
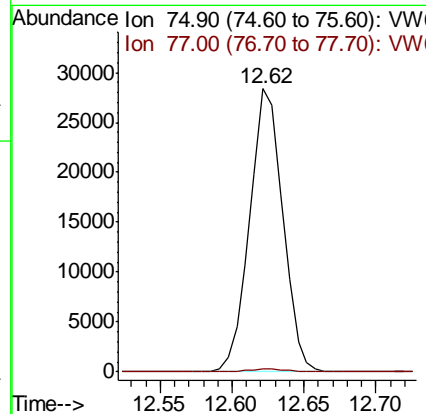
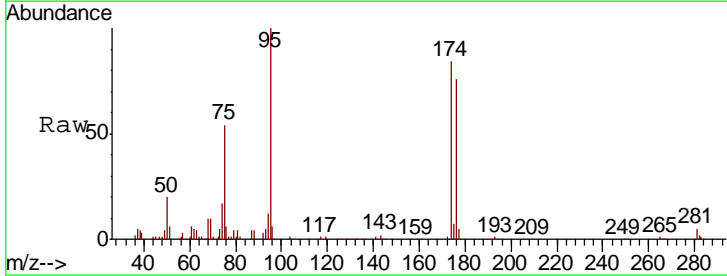
Instrument : MSVOA_W
 ClientSampled :

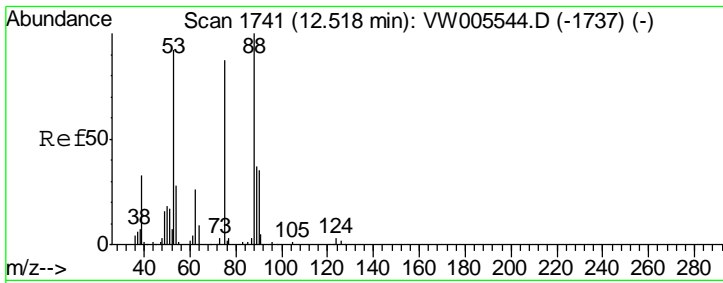
Tgt Ion	Resp	Lower	Upper
152	104600		
115	59.5	30.0	90.0
150	155.9	0.0	348.6



#76
 1,2,3-Trichloropropane
 Concen: 50.592 ug/l
 RT: 12.62 min Scan# 1758
 Delta R.T. -0.15 min
 Lab File: VW005555.D
 Acq: 21 Sep 2018 13:06

Tgt Ion	Resp	Lower	Upper
75	45110		
75	100		
77	1.0	0.0	0.0#





#81
 trans-1,4-Dichloro-2-butene
 Concen: 113.948 ug/l
 RT: 12.62 min Scan# 1758
 Delta R.T. 0.10 min
 Lab File: VW005555.D
 Acq: 21 Sep 2018 13:06

Instrument : MSVOA_W
 ClientSampled :

Tot Ion	Ratio	Lower	Upper
75	100		
53	0.2	85.8	128.6#
89	0.1	37.3	55.9#

