

Data Path : Z:\VOASRV\HPCHEM1\MSVOA W\DATA\VW092218\
 Data File : VW005568.D
 Acq On : 21 Sep 2018 18:41
 Operator : VA/AP
 Sample : J4998-01
 Misc : 5.00G/5ML/MSVOA W/SOIL
 ALS Vial : 20 Sample Multiplier: 1

Instrument :
 MSVOA_W
 ClientSampleId :
 YG3-SLOAN-PARK-BRIDGE

Integration Parameters: RTEINT.P

Integrator: RTE
 Smoothing : ON Filtering: 5
 Sampling : 1 Min Area: 3 % of largest Peak
 Start Thrs: 0.2 Max Peaks: 100
 Stop Thrs : 0 Peak Location: TOP

If leading or trailing edge < 100 prefer < Baseline drop else tangent >
 Peak separation: 5

Method : Z:\VOASRV\HPCHEM1\MSVOA_W\METHOD\82W092118S.M
 Title : SW846 8260

Signal : TIC

peak #	R.T. min	first scan	max scan	last scan	PK TY	peak height	corr. area	corr. % max.	% of total
1	4.135	358	366	373	rVB2	2541	6616	1.08%	0.163%
2	4.922	482	495	511	rBV3	30638	106739	17.43%	2.628%
3	5.946	653	663	670	rBV4	3647	9700	1.58%	0.239%
4	7.147	847	860	871	rBV	25762	76215	12.44%	1.876%
5	7.891	971	982	986	rBV2	86153	202583	33.07%	4.987%
6	7.951	986	992	1005	rVB	199428	441179	72.03%	10.860%
7	8.262	1032	1043	1047	rBV	107519	266666	43.54%	6.564%
8	8.311	1047	1051	1062	rVB2	94092	196305	32.05%	4.832%
9	8.848	1130	1139	1154	rVB	280256	548115	89.48%	13.493%
10	9.896	1304	1311	1319	rBV6	5502	12681	2.07%	0.312%
11	10.329	1374	1382	1390	rBV	312977	538233	87.87%	13.250%
12	10.713	1436	1445	1451	rBV	47451	87297	14.25%	2.149%
13	11.067	1494	1503	1512	rBV	34155	56503	9.22%	1.391%
14	11.445	1560	1565	1573	rVB2	30751	51810	8.46%	1.275%
15	11.634	1589	1596	1605	rBV	363449	612524	100.00%	15.078%
16	12.621	1751	1758	1768	rVB2	219606	370051	60.41%	9.109%
17	12.945	1806	1811	1819	rVB	10410	16250	2.65%	0.400%
18	13.310	1864	1871	1877	rVB2	6161	10623	1.73%	0.262%
19	13.566	1906	1913	1919	rBV	272914	430201	70.23%	10.590%
20	14.085	1992	1998	2004	rVB	8585	14550	2.38%	0.358%
21	15.444	2216	2221	2228	rVV3	4685	7413	1.21%	0.182%

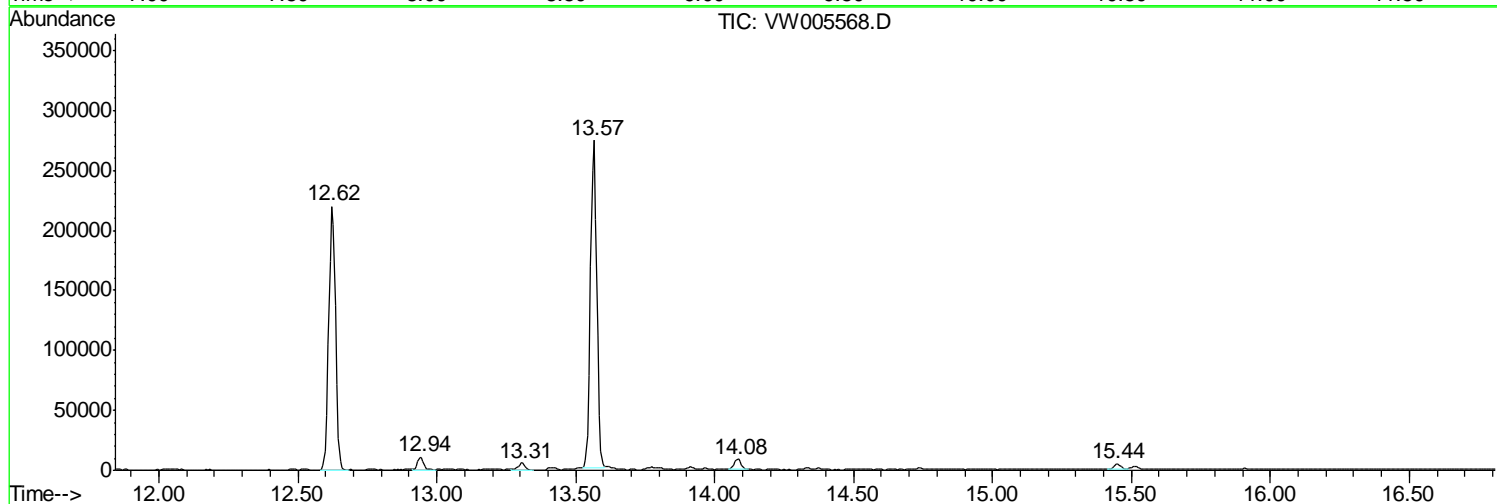
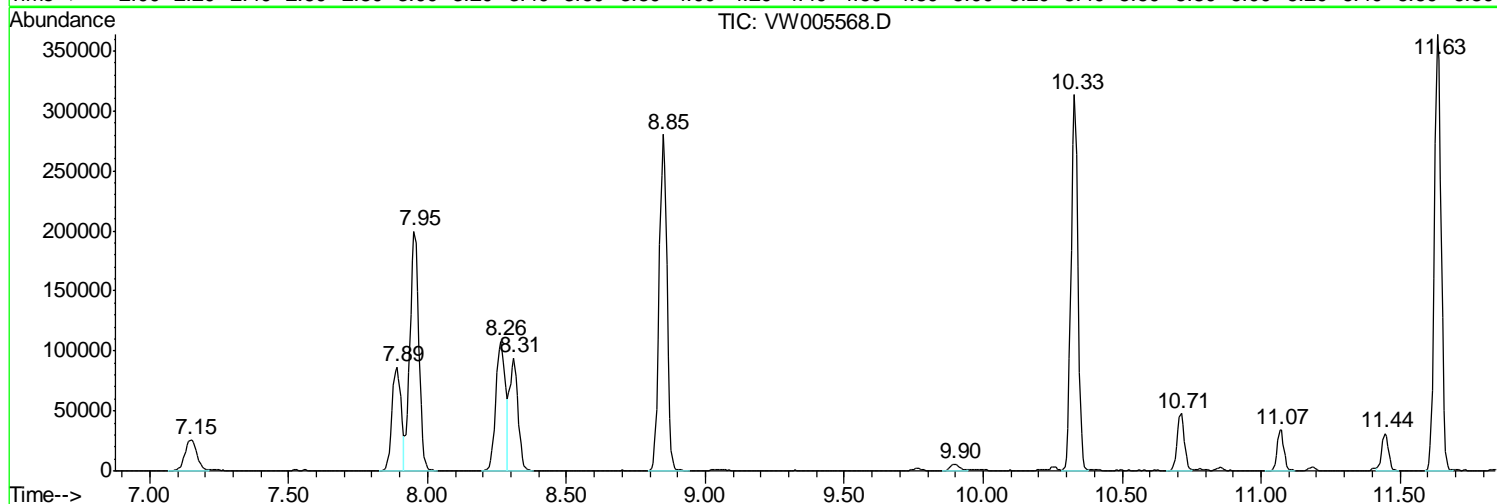
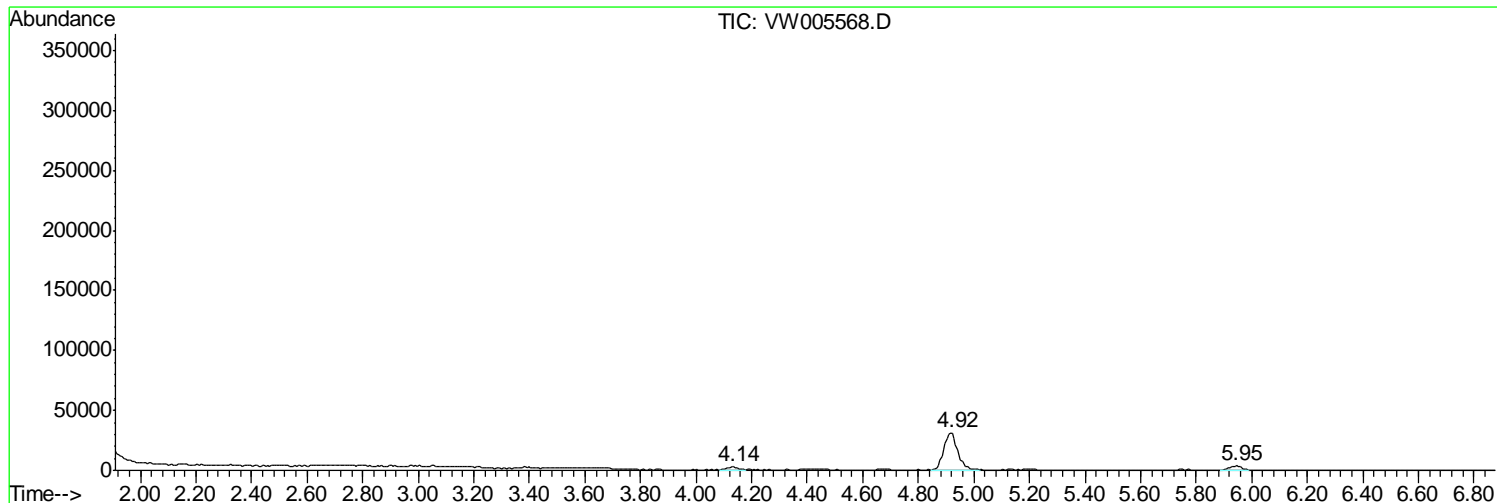
Sum of corrected areas: 4062254

Data Path : Z:\VOASRV\HPCHEM1\MSVOA W\DATA\VW092218\
 Data File : VW005568.D
 Acq On : 21 Sep 2018 18:41
 Operator : VA/AP
 Sample : J4998-01
 Misc : 5.00G/5ML/MSVOA W/SOIL
 ALS Vial : 20 Sample Multiplier: 1

Instrument :
 MSVOA_W
ClientSampled :
 YG3-SLOAN-PARK-BRIDGE

Quant Method : Z:\VOASRV\HPCHEM1\MSVOA_W\METHOD\82W092118S.M
 Quant Title : SW846 8260

TIC Library : C:\DATABASE\NIST11.L
 TIC Integration Parameters: LSCINT.P



Data Path : Z:\VOASRV\HPCHEM1\MSVOA_W\DATA\VW092218\
Data File : VW005568.D
Acq On : 21 Sep 2018 18:41
Operator : VA/AP
Sample : J4998-01
Misc : 5.00G/5ML/MSVOA_W/SOIL
ALS Vial : 20 Sample Multiplier: 1

Instrument :
MSVOA_W
ClientSampleId :
YG3-SLOAN-PARK-BRIDGE

Quant Method : Z:\VOASRV\HPCHEM1\MSVOA_W\METHOD\82W092118S.M
Quant Title : SW846 8260

TIC Library : C:\DATABASE\NIST11.L
TIC Integration Parameters: LSCINT.P

No Library Search Compounds Detected

Data Path : Z:\VOASRV\HPCHEM1\MSVOA_W\DATA\VW092218\
Data File : VW005568.D
Acq On : 21 Sep 2018 18:41
Operator : VA/AP
Sample : J4998-01
Misc : 5.00G/5ML/MSVOA_W/SOIL
ALS Vial : 20 Sample Multiplier: 1

Instrument :
MSVOA_W
ClientSampleId :
YG3-SLOAN-PARK-BRIDGE

Quant Method : Z:\VOASRV\HPCHEM1\MSVOA_W\METHOD\82W092118S.M
Quant Title : SW846 8260

TIC Library : C:\DATABASE\NIST11.L
TIC Integration Parameters: LSCINT.P

TIC Top Hit name	RT	EstConc	Units	Response	--Internal Standard--			
					#	RT	Resp	Conc
