

Data Path : Z:\VOASRV\HPCHEM1\MSVOA W\DATA\VW092319\  
 Data File : VW013229.D  
 Acq On : 23 Sep 2019 14:20  
 Operator : SY/VA  
 Sample : K4997-08  
 Misc : 5.07G/5ML/MSVOA W/SOIL  
 ALS Vial : 10 Sample Multiplier: 1

Instrument :  
 MSVOA\_W  
 ClientSampleId :  
 WC-11-091919

Integration Parameters: RTEINT.P

Integrator: RTE  
 Smoothing : ON Filtering: 5  
 Sampling : 1 Min Area: 3 % of largest Peak  
 Start Thrs: 0.2 Max Peaks: 100  
 Stop Thrs : 0 Peak Location: TOP

If leading or trailing edge < 100 prefer < Baseline drop else tangent >  
 Peak separation: 5

Method : Z:\VOASRV\HPCHEM1\MSVOA\_W\METHOD\82W092019S.M  
 Title : SW846 8260

Signal : TIC

peak #	R.T. min	first scan	max scan	last scan	PK TY	peak height	corr. area	corr. % max.	% of total
1	1.953	6	8	22	rVB4	16650	39280	2.75%	0.541%
2	2.148	35	40	50	rBV	14485	28198	1.98%	0.389%
3	4.915	483	494	507	rBV4	7371	26908	1.89%	0.371%
4	5.111	514	526	537	rBV2	10968	40369	2.83%	0.556%
5	7.141	846	859	872	rBV2	26056	78381	5.50%	1.080%
6	7.884	971	981	985	rBV	182605	430138	30.16%	5.927%
7	7.945	985	991	1001	rVB	397514	870373	61.03%	11.993%
8	8.305	1034	1050	1061	rBV	167780	377993	26.51%	5.208%
9	8.842	1127	1138	1148	rBV	547046	1064952	74.68%	14.674%
10	10.323	1372	1381	1389	rBV	817525	1426064	100.00%	19.650%
11	10.707	1435	1444	1449	rBV2	17208	33664	2.36%	0.464%
12	11.067	1496	1503	1515	rVB2	25705	43544	3.05%	0.600%
13	11.628	1588	1595	1608	rBV	656207	1102640	77.32%	15.193%
14	12.615	1750	1757	1766	rBV	485665	798797	56.01%	11.007%
15	12.932	1804	1809	1817	rVB4	12141	19753	1.39%	0.272%
16	13.554	1904	1911	1919	rBV	517680	853265	59.83%	11.757%
17	14.072	1989	1996	2004	rVB3	13625	23177	1.63%	0.319%

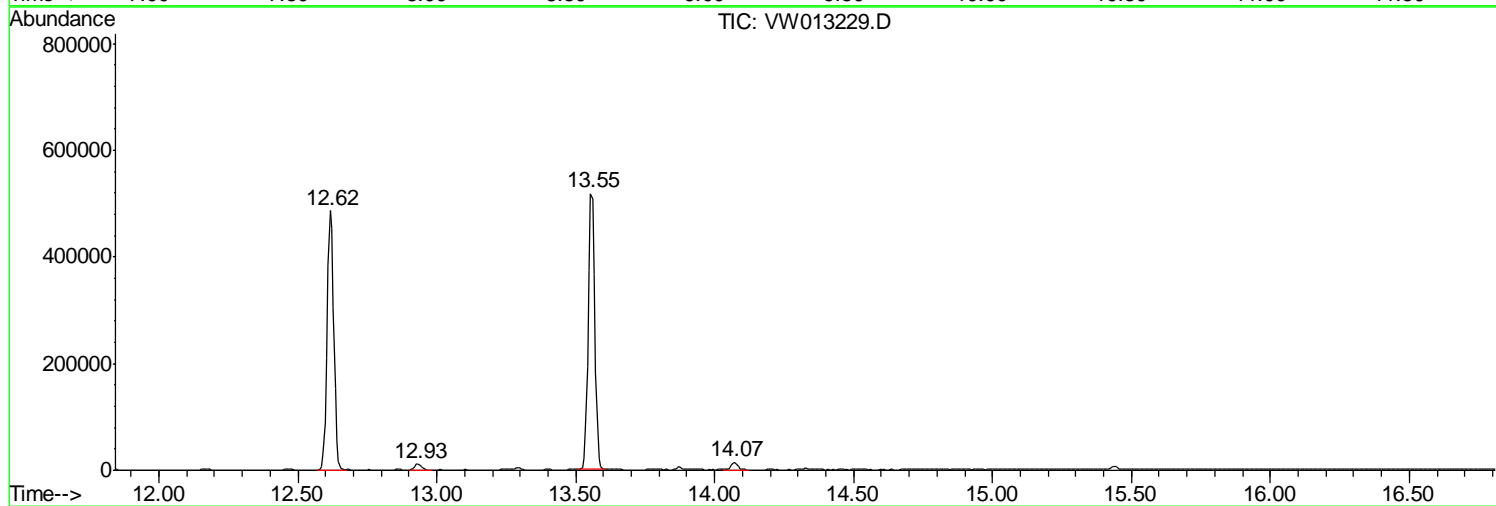
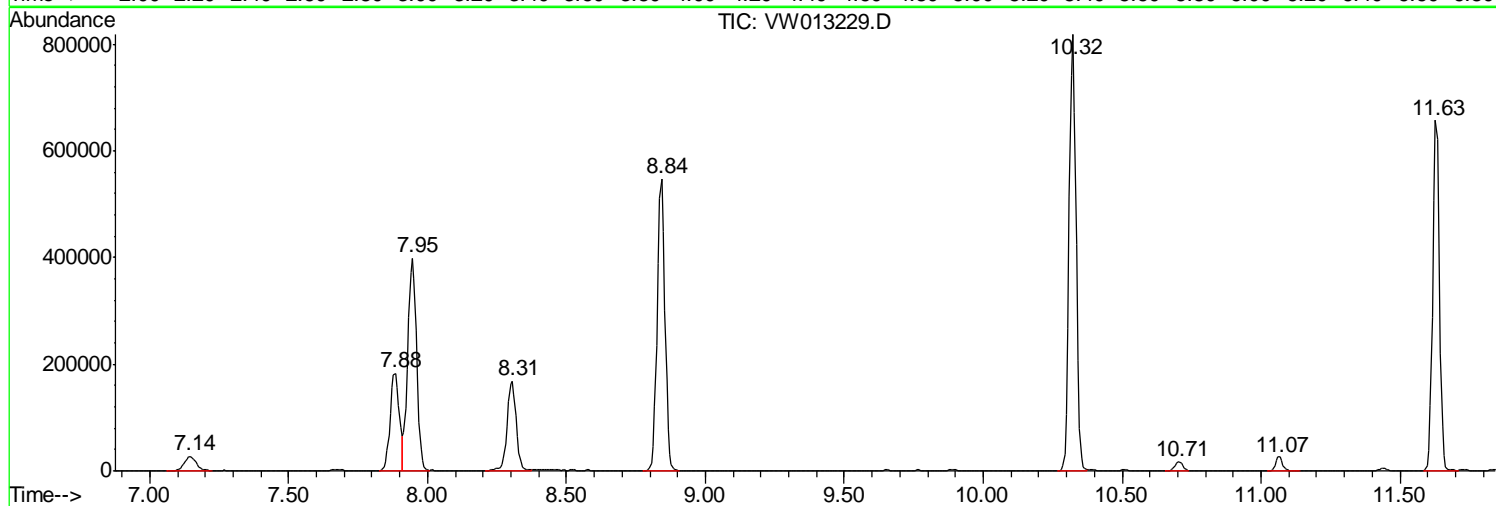
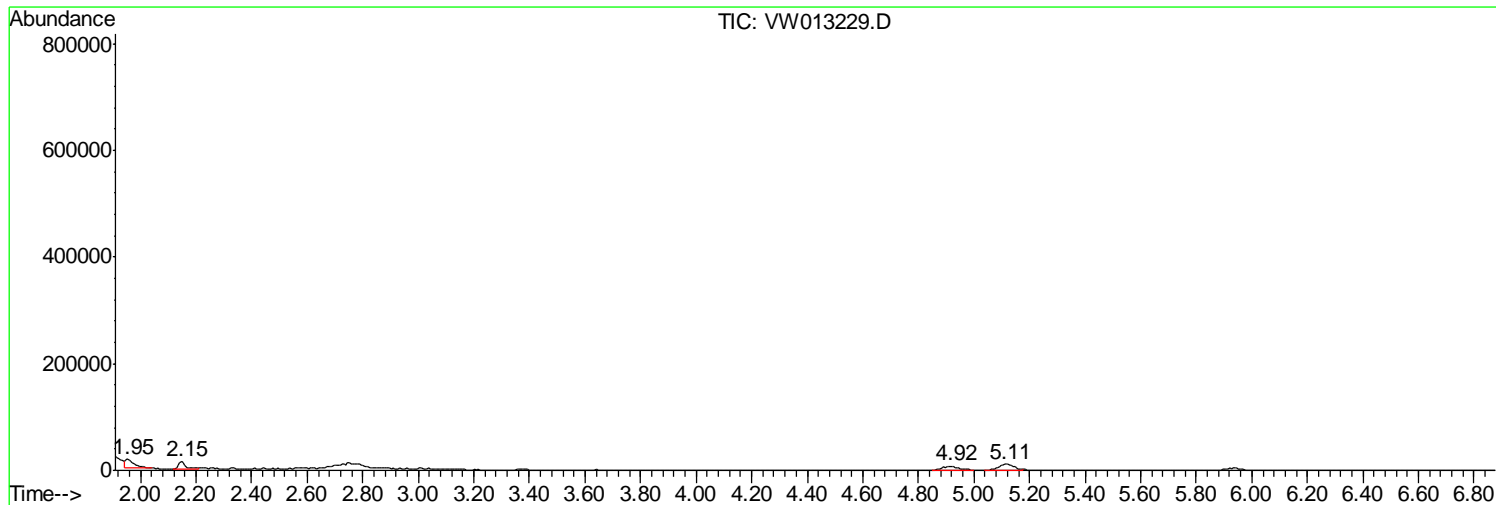
Sum of corrected areas: 7257496

Data Path : Z:\VOASRV\HPCHEM1\MSVOA W\DATA\VW092319\  
Data File : VW013229.D  
Acq On : 23 Sep 2019 14:20  
Operator : SY/VA  
Sample : K4997-08  
Misc : 5.07G/5ML/MSVOA W/SOIL  
ALS Vial : 10 Sample Multiplier: 1

Instrument :  
MSVOA\_W  
ClientSampleId :  
WC-11-091919

Quant Method : Z:\VOASRV\HPCHEM1\MSVOA\_W\METHOD\82W092019S.M  
Quant Title : SW846 8260

TIC Library : C:\DATABASE\NIST11.L  
TIC Integration Parameters: LSCINT.P



Data Path : Z:\VOASRV\HPCHEM1\MSVOA\_W\DATA\VW092319\  
Data File : VW013229.D  
Acq On : 23 Sep 2019 14:20  
Operator : SY/VA  
Sample : K4997-08  
Misc : 5.07G/5ML/MSVOA\_W/SOIL  
ALS Vial : 10 Sample Multiplier: 1

Instrument :  
MSVOA\_W  
ClientSampleId :  
WC-11-091919

Quant Method : Z:\VOASRV\HPCHEM1\MSVOA\_W\METHOD\82W092019S.M  
Quant Title : SW846 8260

TIC Library : C:\DATABASE\NIST11.L  
TIC Integration Parameters: LSCINT.P

No Library Search Compounds Detected

\*\*\*\*\*

Data Path : Z:\VOASRV\HPCHEM1\MSVOA\_W\DATA\VW092319\  
Data File : VW013229.D  
Acq On : 23 Sep 2019 14:20  
Operator : SY/VA  
Sample : K4997-08  
Misc : 5.07G/5ML/MSVOA\_W/SOIL  
ALS Vial : 10 Sample Multiplier: 1

Instrument :  
MSVOA\_W  
ClientSampleId :  
WC-11-091919

Quant Method : Z:\VOASRV\HPCHEM1\MSVOA\_W\METHOD\82W092019S.M  
Quant Title : SW846 8260

TIC Library : C:\DATABASE\NIST11.L  
TIC Integration Parameters: LSCINT.P

TIC Top Hit name	RT	EstConc	Units	Response	--Internal Standard--			
					#	RT	Resp	Conc

---