

Data Path : Z:\VOASRV\HPCHEM1\MSVOA W\DATA\VW092319\
 Data File : VW013241.D
 Acq On : 23 Sep 2019 19:31
 Operator : SY/VA
 Sample : K4957-07
 Misc : 5.02G/5ML/MSVOA W/SOIL
 ALS Vial : 22 Sample Multiplier: 1

Instrument :
 MSVOA_W
 ClientSampleId :
 SB-33-10.5-11.0

Integration Parameters: RTEINT.P

Integrator: RTE
 Smoothing : ON Filtering: 5
 Sampling : 1 Min Area: 3 % of largest Peak
 Start Thrs: 0.2 Max Peaks: 100
 Stop Thrs : 0 Peak Location: TOP

If leading or trailing edge < 100 prefer < Baseline drop else tangent >
 Peak separation: 5

Method : Z:\VOASRV\HPCHEM1\MSVOA_W\METHOD\82W092019S.M
 Title : SW846 8260

Signal : TIC

peak #	R.T. min	first scan	max scan	last scan	PK TY	peak height	corr. area	corr. % max.	% of total
1	2.154	35	41	50	rVB	10636	17480	4.56%	0.786%
2	2.648	114	122	132	rVB8	9472	23719	6.19%	1.067%
3	4.903	483	492	503	rBV3	10565	32702	8.54%	1.471%
4	5.129	518	529	532	rBV4	1391	4168	1.09%	0.187%
5	5.934	659	661	670	rVB4	2440	4844	1.26%	0.218%
6	7.135	849	858	868	rBV	28385	79856	20.85%	3.592%
7	7.885	971	981	985	rBV	51110	120324	31.41%	5.412%
8	7.946	985	991	1003	rVB2	101103	233237	60.89%	10.490%
9	8.305	1035	1050	1059	rBV2	47819	113279	29.58%	5.095%
10	8.842	1128	1138	1147	rBV	144769	286561	74.82%	12.889%
11	10.323	1372	1381	1388	rBV	218657	383016	100.00%	17.227%
12	10.707	1437	1444	1450	rVB	14547	25930	6.77%	1.166%
13	11.061	1494	1502	1511	rBV	19443	33422	8.73%	1.503%
14	11.439	1557	1564	1571	rVB6	2796	5583	1.46%	0.251%
15	11.628	1587	1595	1608	rBV	182284	318683	83.20%	14.334%
16	12.469	1727	1733	1738	rBV4	3386	5680	1.48%	0.255%
17	12.615	1750	1757	1767	rVB2	144945	244895	63.94%	11.015%
18	12.932	1804	1809	1815	rVB3	4877	7672	2.00%	0.345%
19	13.554	1905	1911	1919	rBV	156906	262805	68.61%	11.820%
20	14.073	1990	1996	2002	rVB3	5483	9352	2.44%	0.421%
21	15.438	2216	2220	2225	rVB3	5783	10113	2.64%	0.455%

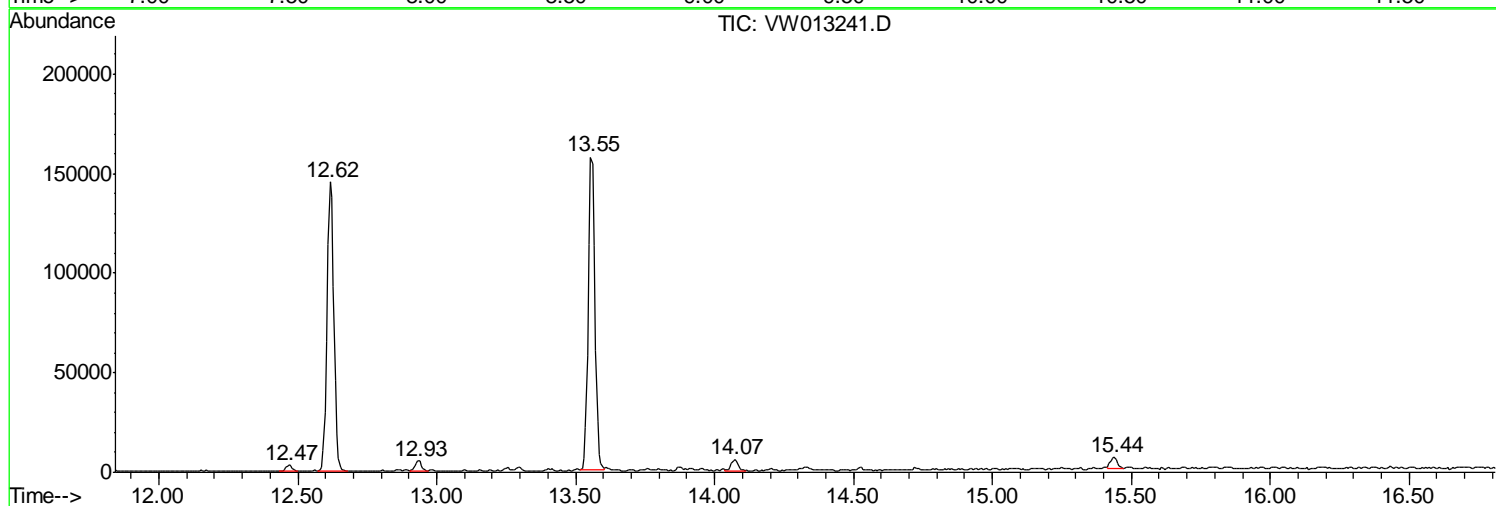
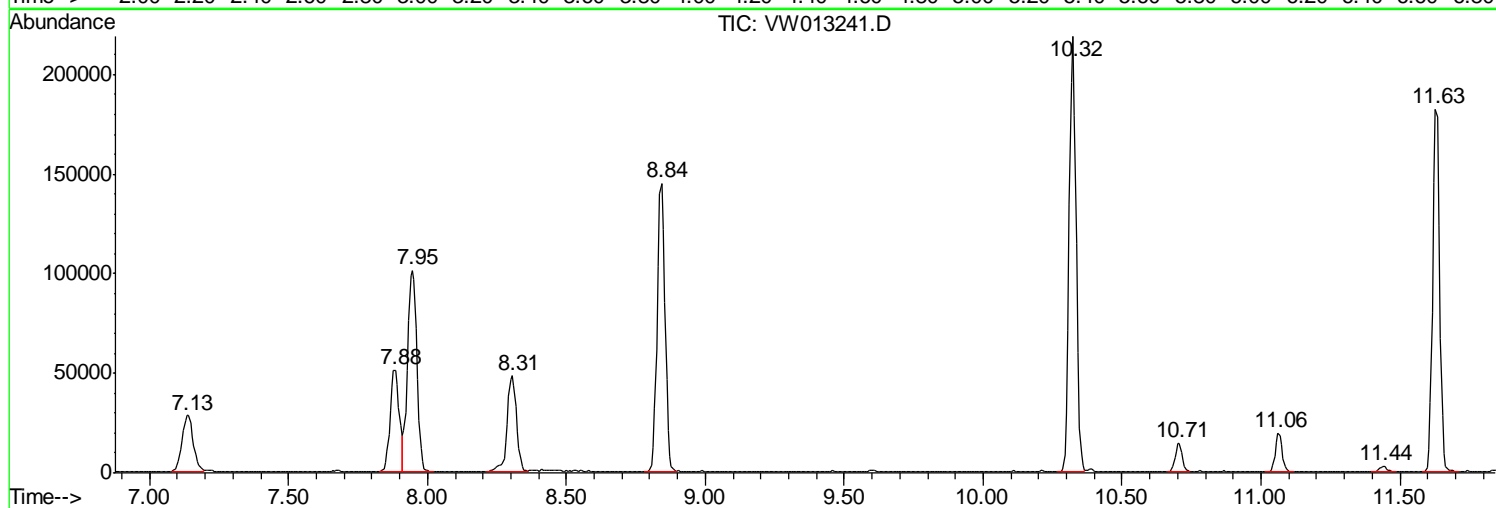
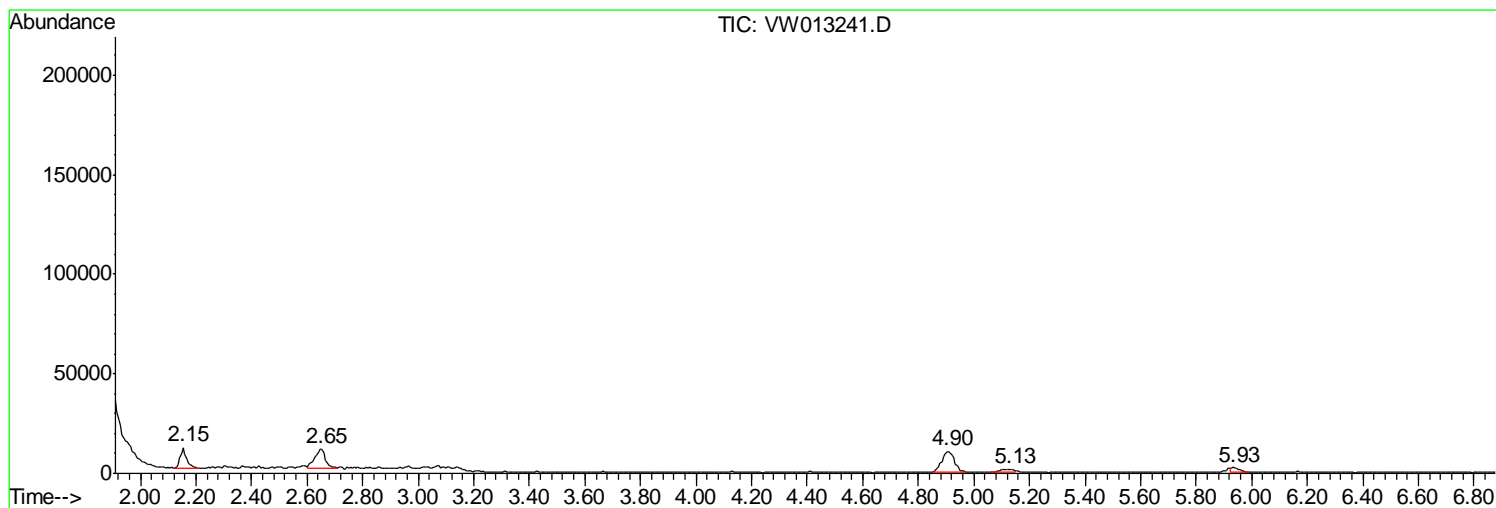
Sum of corrected areas: 2223321

Data Path : Z:\VOASRV\HPCHEM1\MSVOA W\DATA\VW092319\
Data File : VW013241.D
Acq On : 23 Sep 2019 19:31
Operator : SY/VA
Sample : K4957-07
Misc : 5.02G/5ML/MSVOA W/SOIL
ALS Vial : 22 Sample Multiplier: 1

Instrument :
MSVOA_W
ClientSampled :
SB-33-10.5-11.0

Quant Method : Z:\VOASRV\HPCHEM1\MSVOA_W\METHOD\82W092019S.M
Quant Title : SW846 8260

TIC Library : C:\DATABASE\NIST11.L
TIC Integration Parameters: LSCINT.P



Data Path : Z:\VOASRV\HPCHEM1\MSVOA W\DATA\VW092319\
 Data File : VW013241.D
 Acq On : 23 Sep 2019 19:31
 Operator : SY/VA
 Sample : K4957-07
 Misc : 5.02G/5ML/MSVOA W/SOIL
 ALS Vial : 22 Sample Multiplier: 1

Instrument :
 MSVOA_W
 ClientSampled :
 SB-33-10.5-11.0

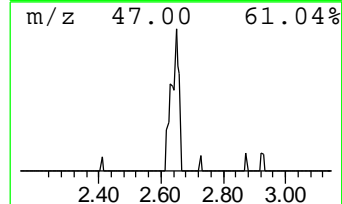
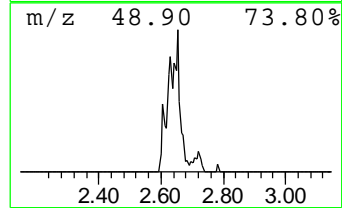
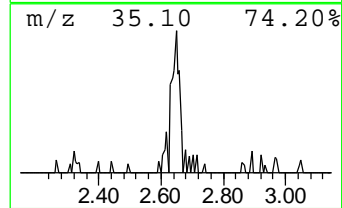
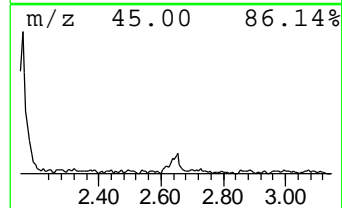
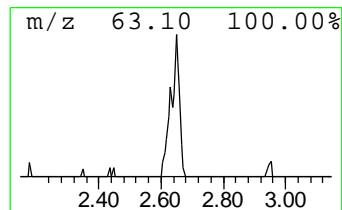
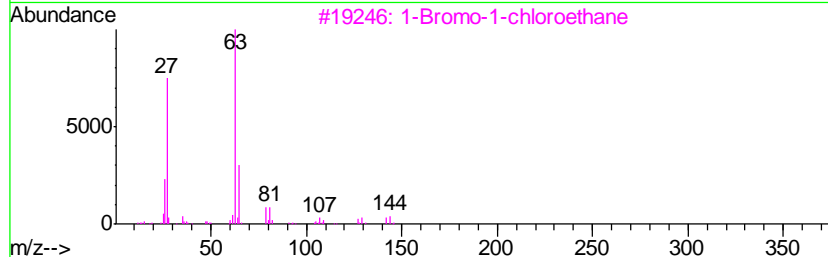
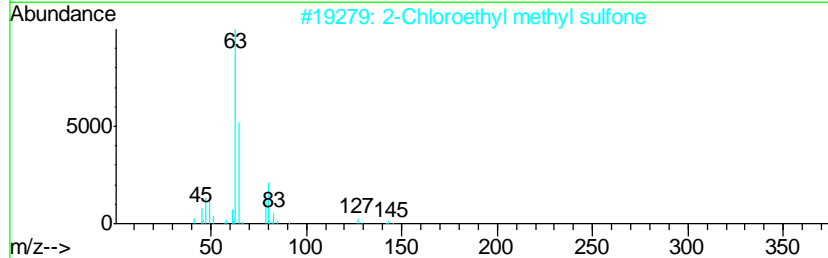
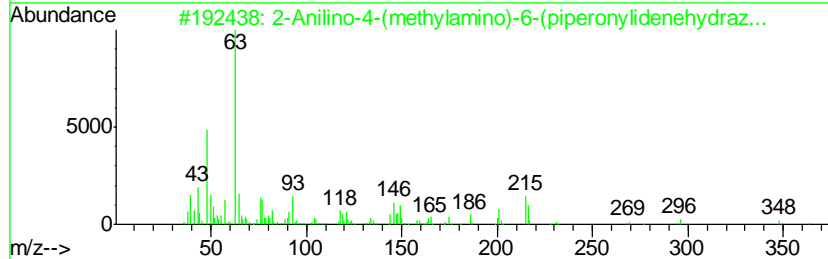
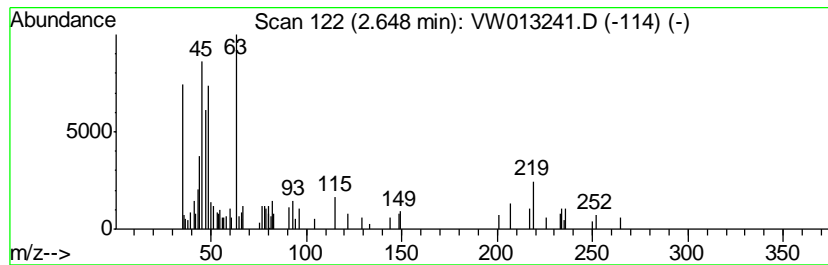
Quant Method : Z:\VOASRV\HPCHEM1\MSVOA_W\METHOD\82W092019S.M
 Quant Title : SW846 8260

TIC Library : C:\DATABASE\NIST11.L
 TIC Integration Parameters: LSCINT.P

 Peak Number 1 unknown2.65 Concentration Rank 3

R.T.	EstConc	Area	Relative to ISTD	R.T.
2.65	5.08 ug/l	23719	Pentafluorobenzene	7.95

Hit#	of	Tentative ID	MW	MolForm	CAS#	Qual
1	5	2-Anilino-4-(methylamino)-6-(pip...	363	C18H17N7O2	1000225-97-3	16
2		2-Chloroethyl methyl sulfone	142	C3H7ClO2S	050890-51-2	12
3		1-Bromo-1-chloroethane	142	C2H4BrCl	000593-96-4	9
4		5-Methoxybenzofurazan, 1-oxide	166	C7H6N2O3	007791-49-3	9
5		Tri(2-chloroethyl) phosphate	284	C6H12Cl3O4P	000115-96-8	9



Data Path : Z:\VOASRV\HPCHEM1\MSVOA W\DATA\VW092319\
 Data File : VW013241.D
 Acq On : 23 Sep 2019 19:31
 Operator : SY/VA
 Sample : K4957-07
 Misc : 5.02G/5ML/MSVOA W/SOIL
 ALS Vial : 22 Sample Multiplier: 1

Instrument :
 MSVOA_W
 ClientSampleID :
 SB-33-10.5-11.0

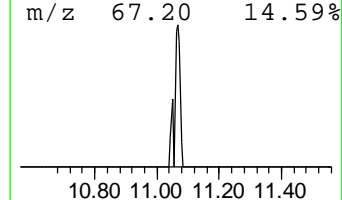
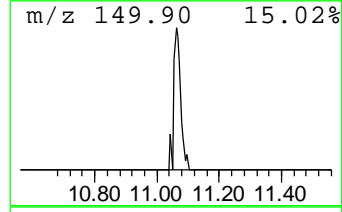
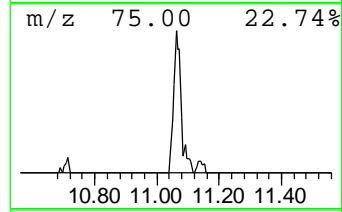
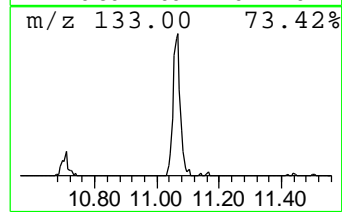
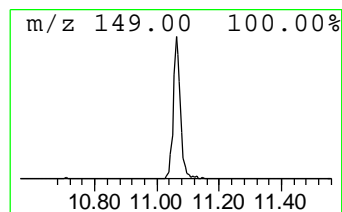
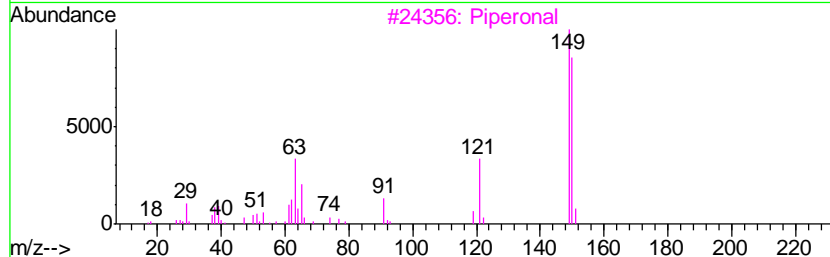
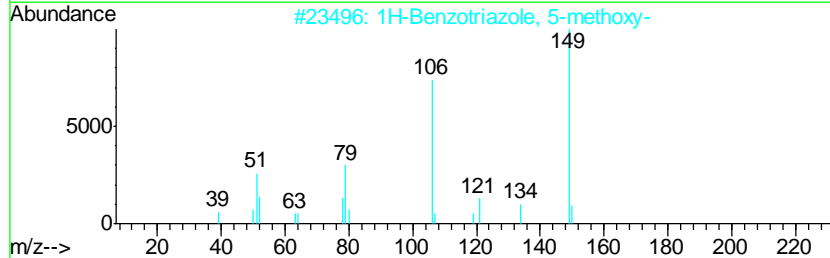
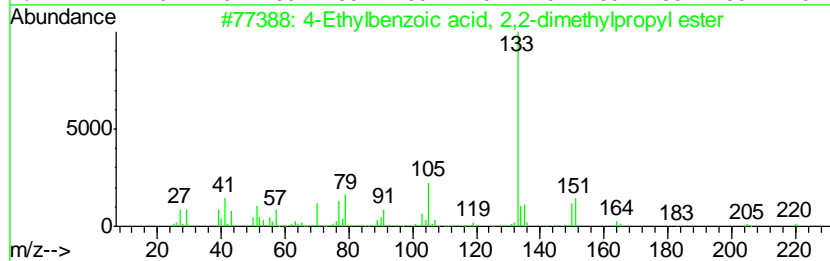
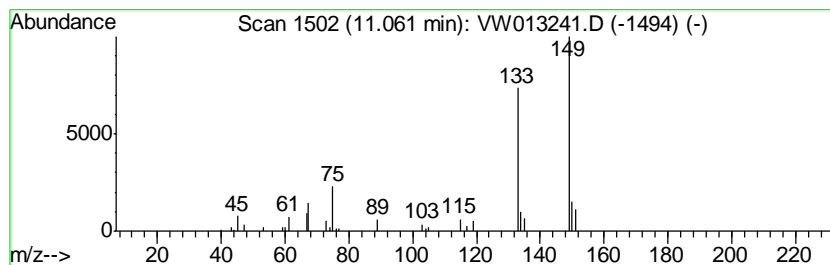
Quant Method : Z:\VOASRV\HPCHEM1\MSVOA_W\METHOD\82W092019S.M
 Quant Title : SW846 8260

TIC Library : C:\DATABASE\NIST11.L
 TIC Integration Parameters: LSCINT.P

 Peak Number 3 unknown11.06 Concentration Rank 2

R.T.	EstConc	Area	Relative to ISTD	R.T.
11.06	5.24 ug/l	33422	Chlorobenzene-d5	11.63

Hit#	of	Tentative ID	MW	MolForm	CAS#	Qual
1	5	4-Ethylbenzoic acid, 2,2-dimethyl...	220	C14H20O2	1000293-49-5	17
2		1H-Benzotriazole, 5-methoxy-	149	C7H7N3O	027799-91-3	16
3		Piperonal	150	C8H6O3	000120-57-0	12
4		Disiloxane, pentamethyl-	148	C5H16OSi2	001438-82-0	12
5		Benzene, 1,3-dimethyl-5-(1-methyl...	148	C11H16	004706-90-5	10



Data Path : Z:\VOASRV\HPCHEM1\MSVOA_W\DATA\VW092319\
Data File : VW013241.D
Acq On : 23 Sep 2019 19:31
Operator : SY/VA
Sample : K4957-07
Misc : 5.02G/5ML/MSVOA_W/SOIL
ALS Vial : 22 Sample Multiplier: 1

Instrument :
MSVOA_W
ClientSampleId :
SB-33-10.5-11.0

Quant Method : Z:\VOASRV\HPCHEM1\MSVOA_W\METHOD\82W092019S.M
Quant Title : SW846 8260

TIC Library : C:\DATABASE\NIST11.L
TIC Integration Parameters: LSCINT.P

TIC Top Hit name	RT	EstConc	Units	Response	--Internal Standard--			
					#	RT	Resp	Conc
unknown2.65	2.65	5.1	ug/l	23719	1	7.95	233237	50.0
unknown11.06	11.06	5.2	ug/l	33422	3	11.63	318683	50.0