

Data Path : Z:\VOASRV\HPCHEM1\MSVOA W\DATA\VW092319\
 Data File : VW013258.D
 Acq On : 24 Sep 2019 05:04
 Operator : SY/VA
 Sample : K4969-02
 Misc : 4.98G/5ML/MSVOA W/SOIL
 ALS Vial : 44 Sample Multiplier: 1

Instrument :
 MSVOA_W
 ClientSampleId :
 FK-PS-01-059

Integration Parameters: RTEINT.P

Integrator: RTE
 Smoothing : ON Filtering: 5
 Sampling : 1 Min Area: 3 % of largest Peak
 Start Thrs: 0.2 Max Peaks: 100
 Stop Thrs : 0 Peak Location: TOP

If leading or trailing edge < 100 prefer < Baseline drop else tangent >
 Peak separation: 5

Method : Z:\VOASRV\HPCHEM1\MSVOA_W\METHOD\82W092019S.M
 Title : SW846 8260

Signal : TIC

peak #	R.T. min	first scan	max scan	last scan	PK TY	peak height	corr. area	corr. % max.	% of total
1	2.148	35	40	49	rBV	24428	51320	3.21%	0.642%
2	4.190	366	375	387	rVB	7011	21028	1.31%	0.263%
3	4.909	481	493	506	rBV2	12022	42167	2.64%	0.527%
4	5.110	513	526	539	rBV2	22239	83152	5.20%	1.040%
5	7.147	850	860	875	rBV	41049	120252	7.52%	1.503%
6	7.671	935	946	956	rBV2	19720	46407	2.90%	0.580%
7	7.878	968	980	985	rBV	204505	484914	30.32%	6.063%
8	7.939	985	990	1001	rVB	404604	909127	56.84%	11.366%
9	8.299	1036	1049	1060	rBV	198387	442559	27.67%	5.533%
10	8.835	1128	1137	1147	rBV	589443	1154485	72.18%	14.434%
11	10.323	1373	1381	1396	rBV	906348	1599384	100.00%	19.996%
12	11.628	1587	1595	1607	rBV	749418	1263181	78.98%	15.793%
13	12.615	1747	1757	1769	rBV	531595	866397	54.17%	10.832%
14	13.554	1904	1911	1919	rBV	548710	883770	55.26%	11.049%
15	14.072	1990	1996	2002	rVB2	16797	30325	1.90%	0.379%

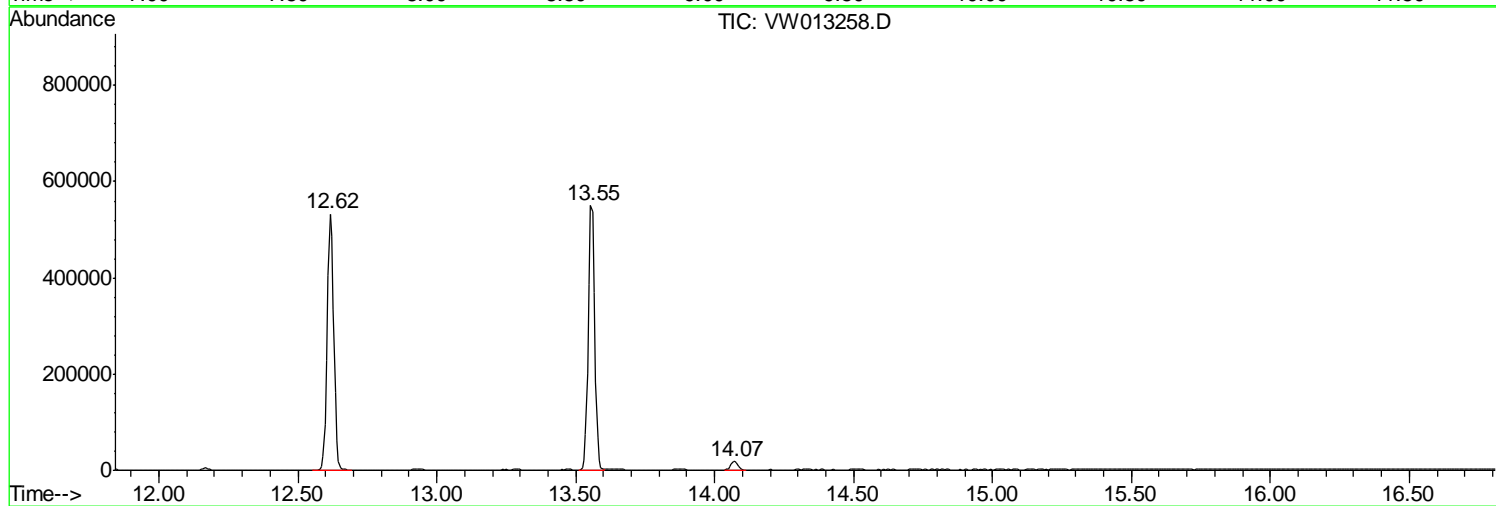
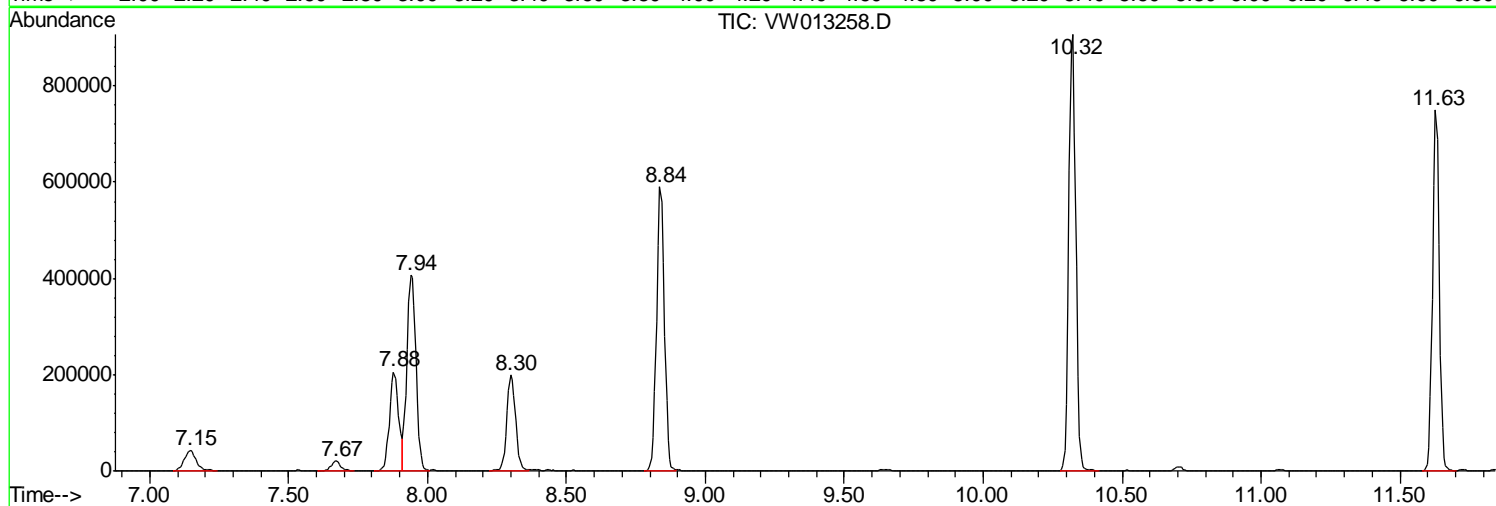
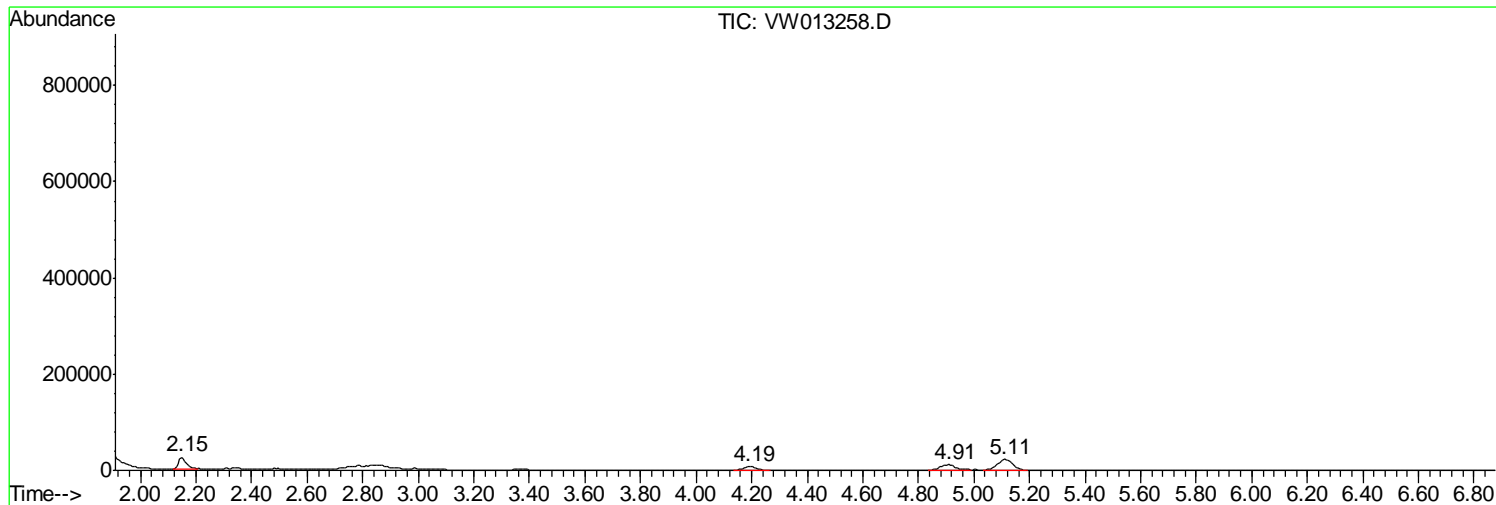
Sum of corrected areas: 7998468

Data Path : Z:\VOASRV\HPCHEM1\MSVOA W\DATA\VW092319\
Data File : VW013258.D
Acq On : 24 Sep 2019 05:04
Operator : SY/VA
Sample : K4969-02
Misc : 4.98G/5ML/MSVOA W/SOIL
ALS Vial : 44 Sample Multiplier: 1

Instrument :
MSVOA_W
ClientSampled :
FK-PS-01-059

Quant Method : Z:\VOASRV\HPCHEM1\MSVOA_W\METHOD\82W092019S.M
Quant Title : SW846 8260

TIC Library : C:\DATABASE\NIST11.L
TIC Integration Parameters: LSCINT.P



Data Path : Z:\VOASRV\HPCHEM1\MSVOA_W\DATA\VW092319\
Data File : VW013258.D
Acq On : 24 Sep 2019 05:04
Operator : SY/VA
Sample : K4969-02
Misc : 4.98G/5ML/MSVOA_W/SOIL
ALS Vial : 44 Sample Multiplier: 1

Instrument :
MSVOA_W
ClientSampleId :
FK-PS-01-059

Quant Method : Z:\VOASRV\HPCHEM1\MSVOA_W\METHOD\82W092019S.M
Quant Title : SW846 8260

TIC Library : C:\DATABASE\NIST11.L
TIC Integration Parameters: LSCINT.P

No Library Search Compounds Detected

Data Path : Z:\VOASRV\HPCHEM1\MSVOA_W\DATA\VW092319\
Data File : VW013258.D
Acq On : 24 Sep 2019 05:04
Operator : SY/VA
Sample : K4969-02
Misc : 4.98G/5ML/MSVOA_W/SOIL
ALS Vial : 44 Sample Multiplier: 1

Instrument :
MSVOA_W
ClientSampleId :
FK-PS-01-059

Quant Method : Z:\VOASRV\HPCHEM1\MSVOA_W\METHOD\82W092019S.M
Quant Title : SW846 8260

TIC Library : C:\DATABASE\NIST11.L
TIC Integration Parameters: LSCINT.P

TIC Top Hit name	RT	EstConc	Units	Response	--Internal Standard--			
					#	RT	Resp	Conc
