

Data Path : Z:\voasrv\HPCHEM1\MSVOA\_W\Data\VW092321\  
 Data File : VW020152.D  
 Acq On : 23 Sep 2021 17:37  
 Operator : SY/VA  
 Sample : M3834-07RE  
 Misc : 5.08g/10mL/MSVOA\_W/SOIL  
 ALS Vial : 1 Sample Multiplier: 1

Instrument :  
 MSVOA\_W  
 ClientSampled :  
 EW408RE

Quant Time: Sep 24 01:44:00 2021  
 Quant Method : Z:\voasrv\HPCHEM1\MSVOA\_W\Method\SFAMWLM092121SMA.M  
 Quant Title : SFAM01.0  
 QLast Update : Fri Sep 24 01:36:59 2021  
 Response via : Initial Calibration

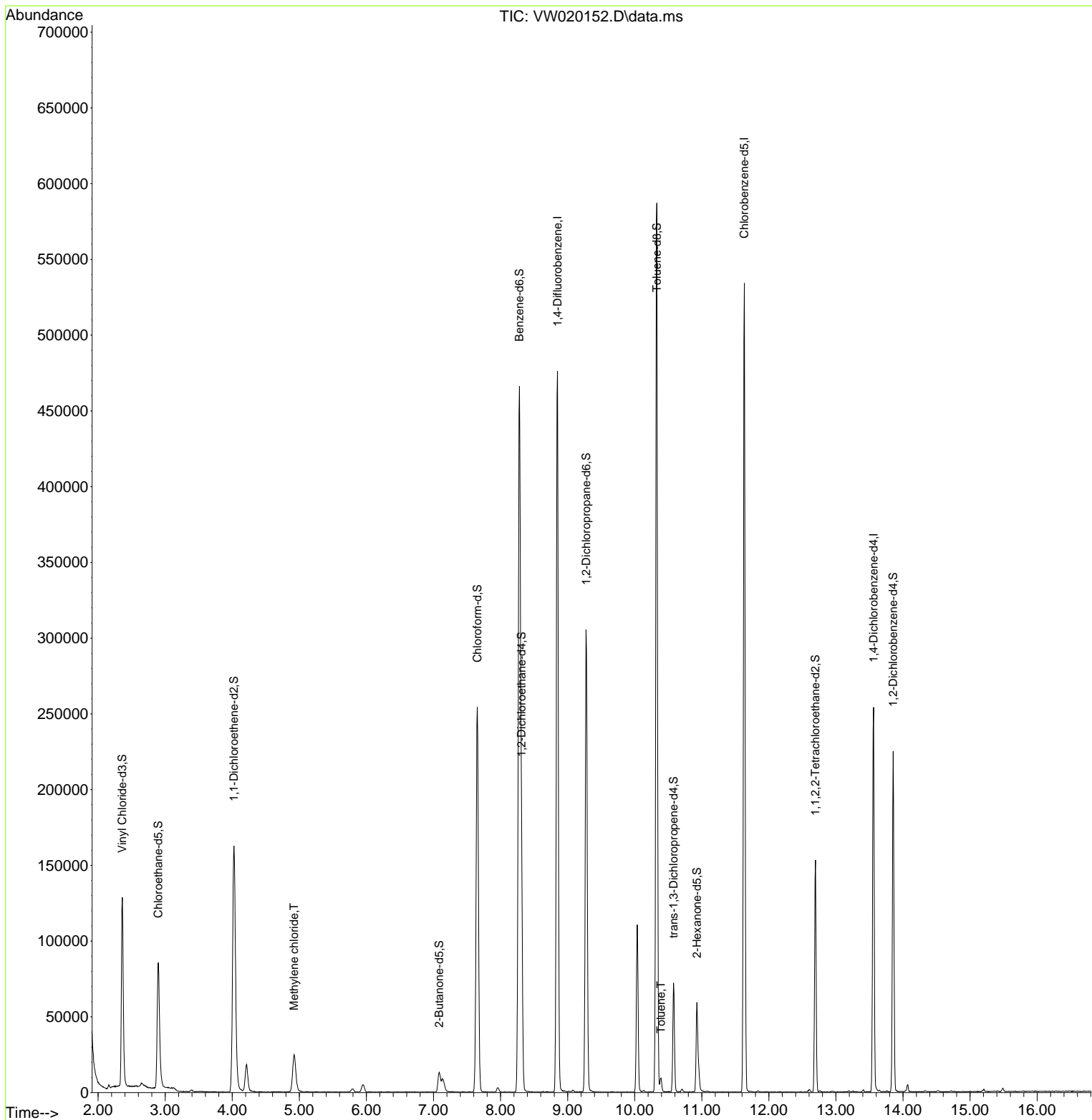
Compound	R.T.	QIon	Response	Conc	Units	Dev(Min)
-----						
Internal Standards						
1) 1,4-Difluorobenzene	8.848	114	380601	25.000	ug/L	0.00
28) Chlorobenzene-d5	11.634	117	287114	25.000	ug/L	0.00
58) 1,4-Dichlorobenzene-d4	13.560	152	64161	25.000	ug/L	0.00
System Monitoring Compounds						
4) Vinyl Chloride-d3	2.361	65	147961	19.003	ug/L	0.00
Spiked Amount	25.000	Range 30 - 150	Recovery =	76.000%		
7) Chloroethane-d5	2.898	69	116614	19.881	ug/L	0.00
Spiked Amount	25.000	Range 30 - 150	Recovery =	79.520%		
11) 1,1-Dichloroethene-d2	4.025	63	178663	14.655	ug/L	0.00
Spiked Amount	25.000	Range 45 - 110	Recovery =	58.640%		
21) 2-Butanone-d5	7.086	46	21291	17.720	ug/L	0.01
Spiked Amount	50.000	Range 20 - 135	Recovery =	35.440%		
24) Chloroform-d	7.653	84	254644	21.274	ug/L	0.00
Spiked Amount	25.000	Range 40 - 150	Recovery =	85.080%		
26) 1,2-Dichloroethane-d4	8.311	65	127468	19.787	ug/L	0.00
Spiked Amount	25.000	Range 70 - 130	Recovery =	79.160%		
32) Benzene-d6	8.281	84	470887	25.707	ug/L	0.00
Spiked Amount	25.000	Range 20 - 135	Recovery =	102.840%		
36) 1,2-Dichloropropane-d6	9.274	67	136445	25.739	ug/L	0.00
Spiked Amount	25.000	Range 70 - 120	Recovery =	102.960%		
41) Toluene-d8	10.329	98	384144	23.048	ug/L	0.00
Spiked Amount	25.000	Range 30 - 130	Recovery =	92.200%		
43) trans-1,3-Dichloroprop...	10.579	79	38832	17.138	ug/L	0.00
Spiked Amount	25.000	Range 30 - 135	Recovery =	68.560%		
47) 2-Hexanone-d5	10.927	63	16865	22.989	ug/L	0.00
Spiked Amount	50.000	Range 20 - 135	Recovery =	45.980%		
56) 1,1,2,2-Tetrachloroeth...	12.695	84	72397	17.705	ug/L	0.00
Spiked Amount	25.000	Range 45 - 120	Recovery =	70.800%		
66) 1,2-Dichlorobenzene-d4	13.853	152	55734	23.166	ug/L	0.00
Spiked Amount	25.000	Range 75 - 120	Recovery =	92.680%		
Target Compounds						
						Qvalue
16) Methylene chloride	4.922	84	20431	3.042	ug/L	96
42) Toluene	10.390	91	6080	0.330	ug/L	98
-----						

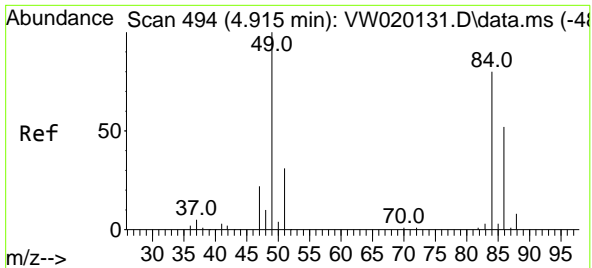
(#) = qualifier out of range (m) = manual integration (+) = signals summed

Data Path : Z:\voasrv\HPCHEM1\MSVOA\_W\Data\VW092321\  
 Data File : VW020152.D  
 Acq On : 23 Sep 2021 17:37  
 Operator : SY/VA  
 Sample : M3834-07RE  
 Misc : 5.08g/10mL/MSVOA\_W/SOIL  
 ALS Vial : 1 Sample Multiplier: 1

Instrument :  
 MSVOA\_W  
 ClientSampled :  
 EW408RE

Quant Time: Sep 24 01:44:00 2021  
 Quant Method : Z:\voasrv\HPCHEM1\MSVOA\_W\Method\SFAMWLM092121SMA.M  
 Quant Title : SFAM01.0  
 QLast Update : Fri Sep 24 01:36:59 2021  
 Response via : Initial Calibration



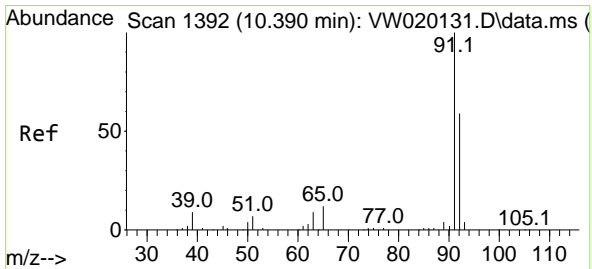
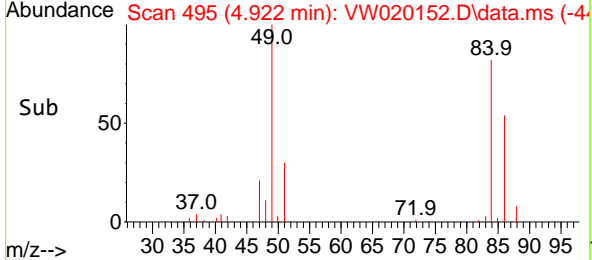
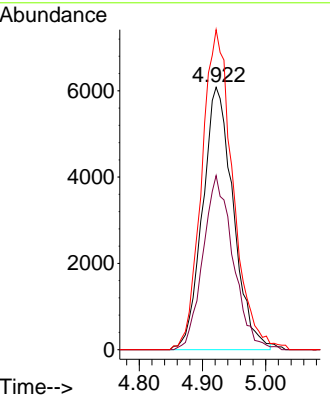
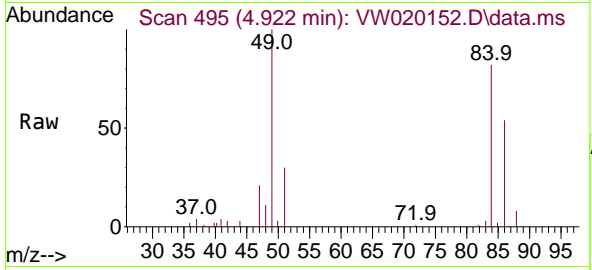


#16  
 Methylene chloride  
 Concen: 3.042 ug/L  
 RT: 4.922 min Scan# 495  
 Delta R.T. 0.006 min  
 Lab File: VW020152.D  
 Acq: 23 Sep 2021 17:37

Instrument :  
 MSVOA\_W  
 ClientSampled :  
 EW408RE

Tgt Ion: 84 Resp: 20431

Ion	Ratio	Lower	Upper
84	100		
86	66.3	42.6	79.0
49	122.0	83.4	154.8



#42  
 Toluene  
 Concen: 0.330 ug/L  
 RT: 10.390 min Scan# 1392  
 Delta R.T. 0.000 min  
 Lab File: VW020152.D  
 Acq: 23 Sep 2021 17:37

Tgt Ion: 91 Resp: 6080

Ion	Ratio	Lower	Upper
91	100		
92	58.7	42.2	78.4

