

Data Path : Z:\VOASRV\HPCHEM1\MSVOA W\DATA\VW092420\
 Data File : VW016625.D
 Acq On : 23 Sep 2020 12:37
 Operator : SY/VA
 Sample : L4110-08
 Misc : 5.45G/10ML/MSVOA W/SOIL
 ALS Vial : 6 Sample Multiplier: 1

Instrument :
 MSVOA_W
ClientSampled :
 COAL3

Manual Integrations
APPROVED
 MMDadoda
 9/28/2020 3:14:10 PM

Quant Time: Sep 24 04:56:00 2020
 Quant Method : Z:\VOASRV\HPCHEM1\MSVOA_W\METHOD\SOM2WLM091520S.M
 Quant Title : VOC Analysis
 QLast Update : Thu Sep 24 04:34:20 2020
 Response via : Initial Calibration

Internal Standards	R.T.	QIon	Response	Conc	Units	Dev(Min)
1) 1,4-Difluorobenzene	8.85	114	715089	25.00	ug/L	0.00
28) Chlorobenzene-d5	11.63	117	611031	25.00	ug/L	0.00
60) 1,4-Dichlorobenzene-d4	13.56	152	275359	25.00	ug/L	0.00

System Monitoring Compounds

4) Vinyl Chloride-d3	2.37	65	160718	23.22	ug/L	0.00
Spiked Amount	25.000	Range	30 - 150	Recovery	=	92.88%
7) Chloroethane-d5	2.90	69	138305	24.47	ug/L	0.00
Spiked Amount	25.000	Range	30 - 150	Recovery	=	97.88%
10) 1,1-Dichloroethene-d2	4.03	63	256909	16.60	ug/L	0.00
Spiked Amount	25.000	Range	45 - 110	Recovery	=	66.40%
20) 2-Butanone-d5	7.09	46	61386	32.53	ug/L	0.01
Spiked Amount	50.000	Range	20 - 135	Recovery	=	65.06%
24) Chloroform-d	7.66	84	346127	23.14	ug/L	0.00
Spiked Amount	25.000	Range	40 - 150	Recovery	=	92.56%
26) 1,2-Dichloroethane-d4	8.31	65	173871	22.64	ug/L	0.00
Spiked Amount	25.000	Range	70 - 130	Recovery	=	90.56%
29) Benzene-d6	8.28	84	688714	25.13	ug/L	0.00
Spiked Amount	25.000	Range	20 - 135	Recovery	=	100.52%
33) 1,2-Dichloropropane-d6	9.28	67	186566	25.12	ug/L	0.00
Spiked Amount	25.000	Range	70 - 120	Recovery	=	100.48%
37) Toluene-d8	10.33	98	661256	24.53	ug/L	0.00
Spiked Amount	25.000	Range	30 - 130	Recovery	=	98.12%
38) trans-1,3-Dichloropropene-	10.58	79	80162	21.41	ug/L	0.00
Spiked Amount	25.000	Range	30 - 135	Recovery	=	85.64%
39) 2-Hexanone-d5	10.93	63	50685	37.52	ug/L	0.00
Spiked Amount	50.000	Range	20 - 135	Recovery	=	75.04%
48) 1,1,2,2-Tetrachloroethane-	12.69	84	125605	19.88	ug/L	0.00
Spiked Amount	25.000	Range	45 - 120	Recovery	=	79.52%
61) 1,2-Dichlorobenzene-d4	13.85	152	206360	23.45	ug/L	0.00
Spiked Amount	25.000	Range	75 - 120	Recovery	=	93.80%

Target Compounds					Ovalue
13) Acetone	4.16	43	4246m	2.872	ug/L
16) Methylene chloride	4.93	84	19740	1.790	ug/L

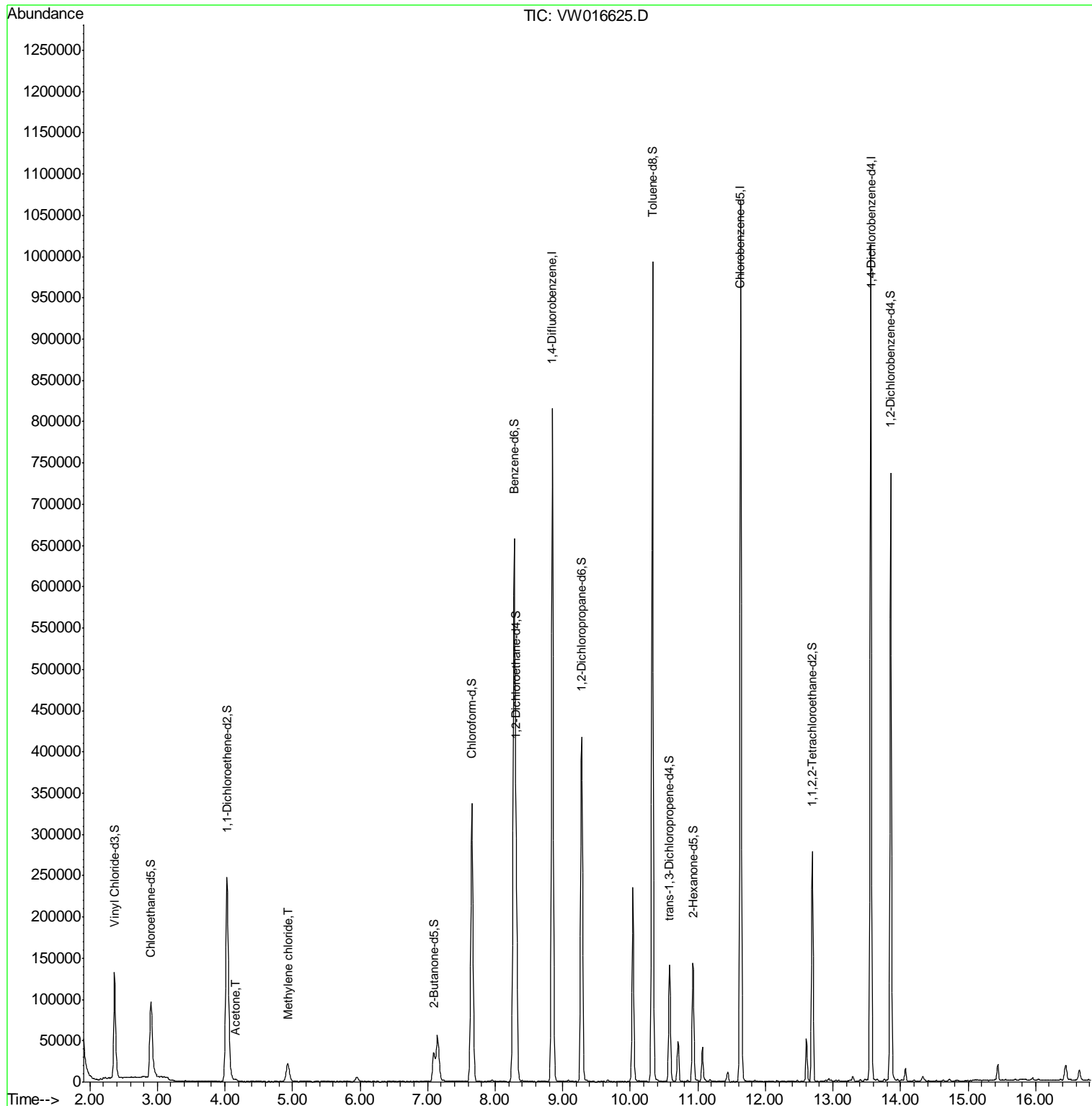
(#) = qualifier out of range (m) = manual integration (+) = signals summed

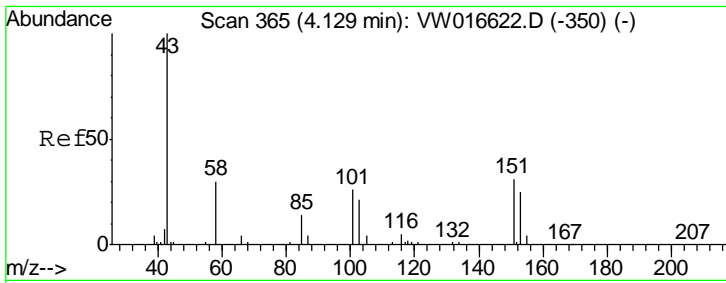
Data Path : Z:\VOASRV\HPCHEM1\MSVOA W\DATA\VW092420\
 Data File : VW016625.D
 Acq On : 23 Sep 2020 12:37
 Operator : SY/VA
 Sample : L4110-08
 Misc : 5.45G/10ML/MSVOA W/SOIL
 ALS Vial : 6 Sample Multiplier: 1

Instrument :
 MSVOA_W
Client Sampled :
 COAL3

Manual Integrations
APPROVED
 MMDadoda
 9/28/2020 3:14:10 PM

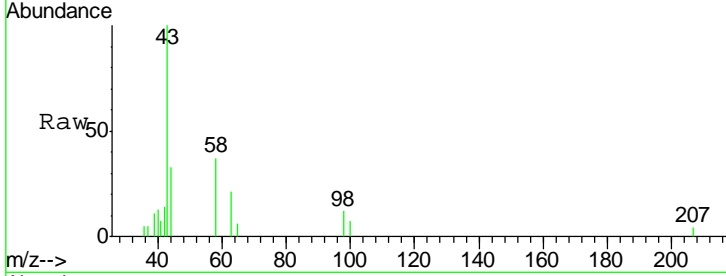
Quant Time: Sep 24 04:56:00 2020
 Quant Method : Z:\VOASRV\HPCHEM1\MSVOA_W\METHOD\SOM2WLM091520S.M
 Quant Title : VOC Analysis
 QLast Update : Thu Sep 24 04:34:20 2020
 Response via : Initial Calibration





#13
 Acetone
 Concen: 2.872 ug/L m
 RT: 4.16 min Scan# 370
 Delta R.T. 0.03 min
 Lab File: VW016625.D
 Acq: 23 Sep 2020 12:37

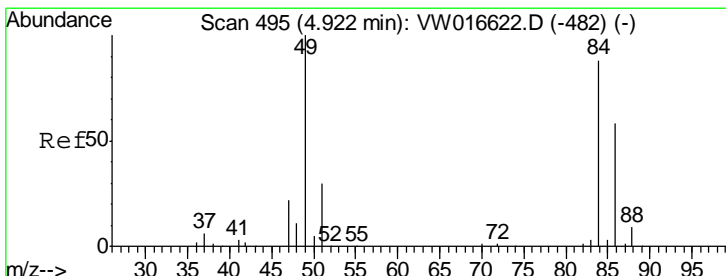
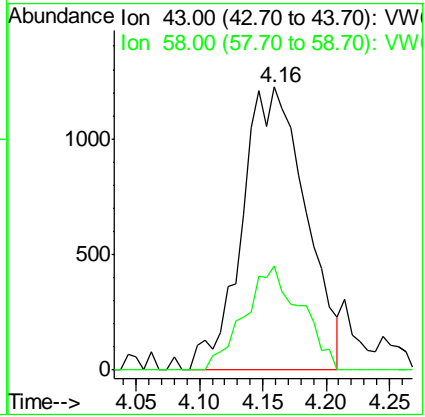
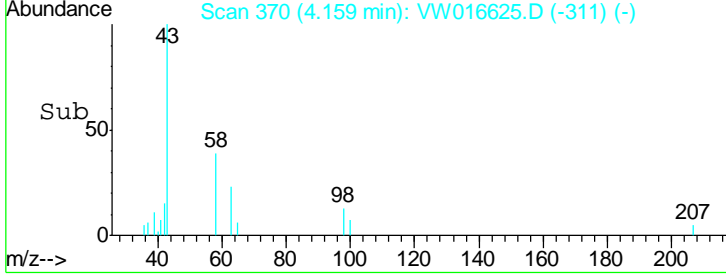
Instrument : MSVOA_W
 ClientSampled : COAL3



Tgt Ion: 43 Resp: 4246

Ion	Ratio	Lower	Upper
43	100		
58	26.6	0.0	60.2

Manual Integrations
APPROVED
 MMDadoda
 9/28/2020 3:14:10 PM



#16
 Methylene chloride
 Concen: 1.790 ug/L
 RT: 4.93 min Scan# 496
 Delta R.T. 0.01 min
 Lab File: VW016625.D
 Acq: 23 Sep 2020 12:37

Tgt Ion: 84 Resp: 19740

Ion	Ratio	Lower	Upper
84	100		
49	98.8	76.0	141.2
86	62.6	45.6	84.6

