

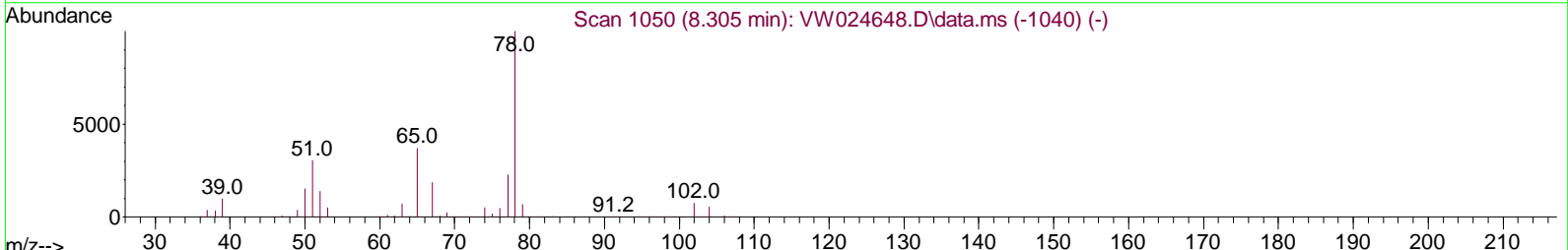
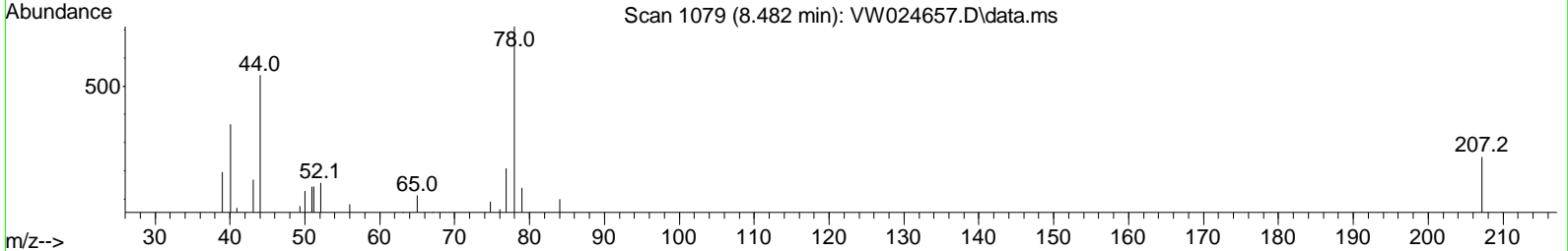
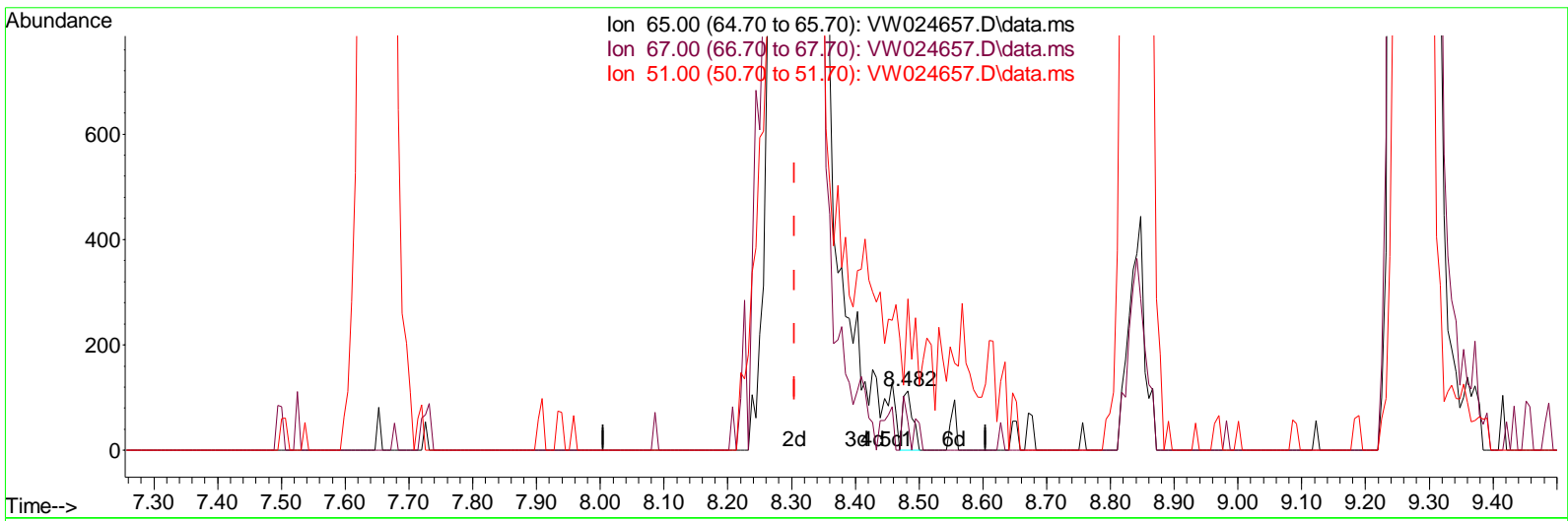
Data Path : Z:\voasrv\HPCHEM1\MSVOA_W\Data\VW092822\
 Data File : VW024657.D
 Acq On : 28 Sep 2022 14:42
 Operator : SY/VA
 Sample : VI BLK558
 Mi sc : 5.00g/10mL/MSVOA_W/SOIL
 ALS Vial : 1 Sample Multiplier: 1

Instrument :
 MSVOA_W
ClientSampleId :
 VIBLK558

Manual Integrations APPROVED

Reviewed By : Semsettin Yesilyurt 09/29/2022
 Supervised By : Mahesh Dadoda 09/29/2022

Quant Time: Sep 29 04:44:33 2022
 Quant Method : Z:\voasrv\HPCHEM1\MSVOA_W\Method\SFAMLM092622SMA.M
 Quant Title : SFAM01.0
 QLast Update : Thu Sep 29 04:41:43 2022
 Response via : Initial Calibration



TIC: VW024657.D\data.ms

(26) 1,2-Dichloroethane-d4 (S)

8.482min (+ 0.177) 0.01 ug/L

response 120

Ion	Exp%	Act%
65.00	100.00	100.00
67.00	53.90	47.50
51.00	118.70	121.67
0.00	0.00	0.00

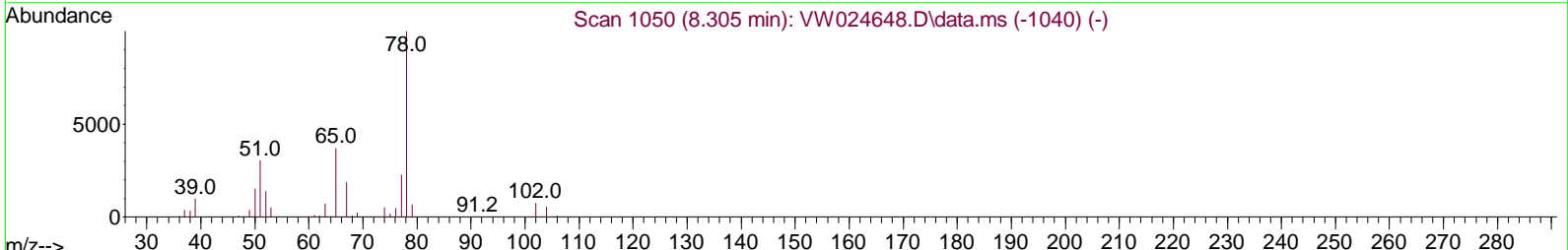
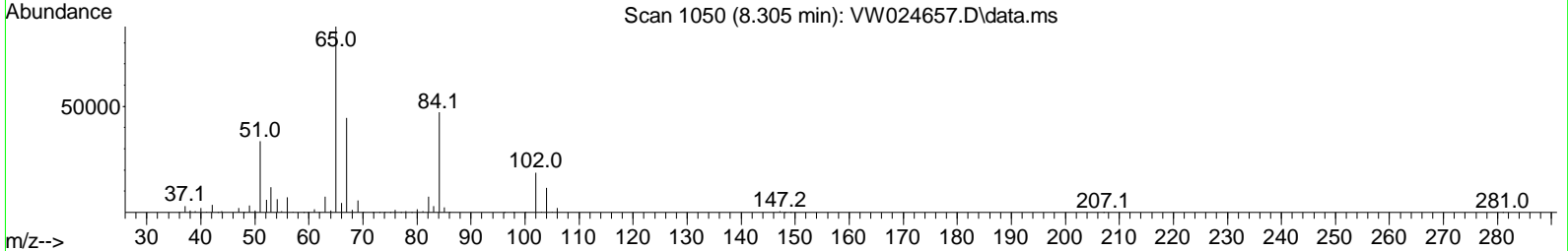
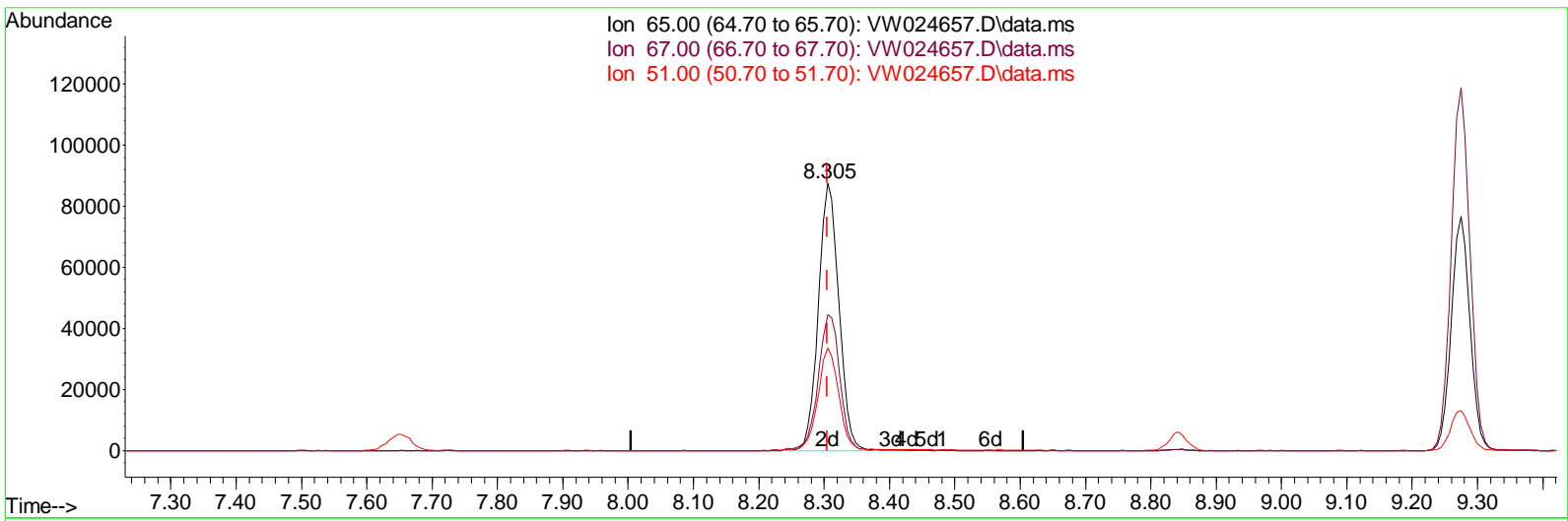
Data Path : Z:\voasrv\HPCHEM1\MSVOA_W\Data\VW092822\
 Data File : VW024657.D
 Acq On : 28 Sep 2022 14:42
 Operator : SY/VA
 Sample : VI BLK558
 Mi sc : 5.00g/10mL/MSVOA_W/SOIL
 ALS Vial : 1 Sample Multiplier: 1

Instrument :
 MSVOA_W
ClientSampleId :
 VIBLK558

Manual IntegrationsAPPROVED

Reviewed By :Semsettin Yesilyurt 09/29/2022
 Supervised By :Mahesh Dadoda 09/29/2022

Quant Time: Sep 29 04:44:33 2022
 Quant Method : Z:\voasrv\HPCHEM1\MSVOA_W\Method\SFAMLM092622SMA.M
 Quant Title : SFAM01.0
 QLast Update : Thu Sep 29 04:41:43 2022
 Response via : Initial Calibration



TIC: VW024657.D\data.ms

(26) 1,2-Dichloroethane-d4 (S)

8.305min (+ 0.000) 23.46 ug/L m

response	191249
Ion	Exp% Act%
65.00	100.00 100.00
67.00	53.90 0.03#
51.00	118.70 0.08#
0.00	0.00 0.00

Data Path : Z:\voasrv\HPCHEM1\MSVOA_W\Data\W092822\
 Data File : W024657.D
 Acq On : 28 Sep 2022 14:42
 Operator : SY/VA
 Sample : VI BLK558
 Mi sc : 5.00g/10mL/MSVOA_W/SOIL
 ALS Vial : 1 Sample Multiplier: 1

Instrument :
 MSVOA_W
Client Sample Id :
 VIBLK558

Manual Integrations APPROVED

Reviewed By : Semsettin Yesilyurt 09/29/2022
 Supervised By : Mahesh Dadoda 09/29/2022

Quant Time: Sep 29 04:44:33 2022
 Quant Method : Z:\voasrv\HPCHEM1\MSVOA_W\Method\SFAMWLM092622SMA.M
 Quant Title : SFAM01.0
 QLast Update : Thu Sep 29 04:41:43 2022
 Response via : Initial Calibration

Compound	R. T.	QI on	Response	Conc	Units	Dev(Min)
Internal Standards						
1) 1,4-Difluorobenzene	8.842	114	587791	25.000	ug/L	0.00
28) Chlorobenzene-d5	11.634	117	517054	25.000	ug/L	0.00
58) 1,4-Dichlorobenzene-d4	13.554	152	245621	25.000	ug/L	0.00
System Monitoring Compounds						
4) Vinyl Chloride-d3	2.355	65	158487	25.771	ug/L	0.00
Spike Amount	25.000	Range 30 - 150	Recovery =	103.080%		
7) Chloroethane-d5	2.892	69	85871	24.028	ug/L	0.00
Spike Amount	25.000	Range 30 - 150	Recovery =	96.120%		
11) 1,1-Dichloroethene-d2	4.025	63	241113	16.939	ug/L	0.00
Spike Amount	25.000	Range 45 - 110	Recovery =	67.760%		
21) 2-Butanone-d5	7.086	46	96843	43.800	ug/L	0.00
Spike Amount	50.000	Range 20 - 135	Recovery =	87.600%		
24) Chloroform-d	7.647	84	362530	23.071	ug/L	0.00
Spike Amount	25.000	Range 40 - 150	Recovery =	92.280%		
26) 1,2-Dichloroethane-d4	8.305	65	191249m	23.462	ug/L	0.00
Spike Amount	25.000	Range 70 - 130	Recovery =	93.840%		
32) Benzene-d6	8.275	84	778418	23.554	ug/L	0.00
Spike Amount	25.000	Range 20 - 135	Recovery =	94.200%		
36) 1,2-Dichloropropane-d6	9.275	67	236751	23.447	ug/L	0.00
Spike Amount	25.000	Range 70 - 120	Recovery =	93.800%		
41) Toluene-d8	10.323	98	686169	23.230	ug/L	0.00
Spike Amount	25.000	Range 30 - 130	Recovery =	92.920%		
43) trans-1,3-Dichloroprop...	10.579	79	101170	22.499	ug/L	0.00
Spike Amount	25.000	Range 30 - 135	Recovery =	90.000%		
47) 2-Hexanone-d5	10.921	63	77282	44.733	ug/L	0.00
Spike Amount	50.000	Range 20 - 135	Recovery =	89.460%		
56) 1,1,2,2-Tetrachloroeth...	12.689	84	166303	23.115	ug/L	0.00
Spike Amount	25.000	Range 45 - 120	Recovery =	92.440%		
66) 1,2-Dichlorobenzene-d4	13.853	152	209680	24.260	ug/L	0.00
Spike Amount	25.000	Range 75 - 120	Recovery =	97.040%		
Target Compounds						
16) Methylene chloride	4.922	84	96412	8.352	ug/L	99

(#) = qualifier out of range (m) = manual integration (+) = signals summed

Data Path : Z:\voasrv\HPCHEM1\MSVOA_W\Data\VW092822\
 Data File : VW024657.D
 Acq On : 28 Sep 2022 14:42
 Operator : SY/VA
 Sample : VI BLK558
 Mi sc : 5.00g/10mL/MSVOA_W/SOIL
 ALS Vial : 1 Sample Multiplier: 1

Instrument :
 MSVOA_W
ClientSampleId :
 VI BLK558

Manual Integrations APPROVED

Reviewed By : Semsettin Yesilyurt 09/29/2022
 Supervised By : Mahesh Dadoda 09/29/2022

Quant Time: Sep 29 04:44:33 2022
 Quant Method : Z:\voasrv\HPCHEM1\MSVOA_W\Method\SFAMLM092622SMA.M
 Quant Title : SFAM01.0
 QLast Update : Thu Sep 29 04:41:43 2022
 Response via : Initial Calibration

