

Data Path : Z:\voasrv\HPCHEM1\MSVOA_W\Data\VW093021\
 Data File : VW020271.D
 Acq On : 30 Sep 2021 15:42
 Operator : SY/VA
 Sample : M3973-16
 Misc : 8.26g/10mL/MSVOA_W/SOIL
 ALS Vial : 1 Sample Multiplier: 1

Instrument :
 MSVOA_W
ClientSampled :
 EW8Y2

Quant Time: Oct 01 01:06:04 2021
 Quant Method : Z:\voasrv\HPCHEM1\MSVOA_W\Method\SFAMWLM092121SMA.M
 Quant Title : SFAM01.0
 QLast Update : Fri Oct 01 01:03:15 2021
 Response via : Initial Calibration

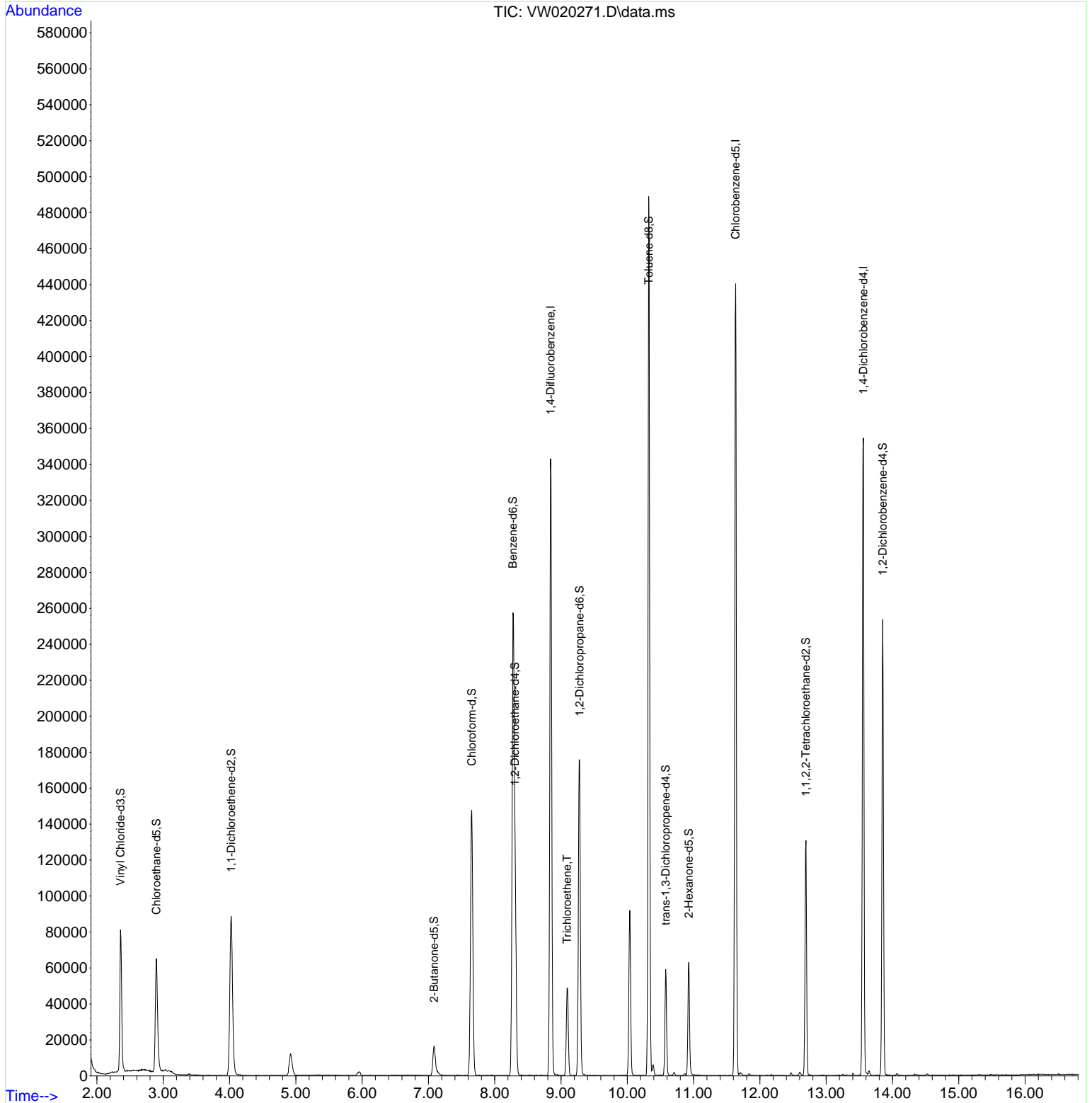
| Compound | R.T. | QIon | Response | Conc | Units | Dev(Min) |
|-------------------------------|--------|----------------|------------|----------|-------|----------|
| ----- | | | | | | |
| Internal Standards | | | | | | |
| 1) 1,4-Difluorobenzene | 8.842 | 114 | 283199 | 25.000 | ug/L | 0.00 |
| 28) Chlorobenzene-d5 | 11.634 | 117 | 256635 | 25.000 | ug/L | 0.00 |
| 58) 1,4-Dichlorobenzene-d4 | 13.560 | 152 | 93746 | 25.000 | ug/L | 0.00 |
| System Monitoring Compounds | | | | | | |
| 4) Vinyl Chloride-d3 | 2.355 | 65 | 87844 | 15.162 | ug/L | 0.00 |
| Spiked Amount | 25.000 | Range 30 - 150 | Recovery = | 60.640% | | |
| 7) Chloroethane-d5 | 2.898 | 69 | 82008 | 18.790 | ug/L | 0.00 |
| Spiked Amount | 25.000 | Range 30 - 150 | Recovery = | 75.160% | | |
| 11) 1,1-Dichloroethene-d2 | 4.026 | 63 | 89930 | 9.914 | ug/L | 0.00 |
| Spiked Amount | 25.000 | Range 45 - 110 | Recovery = | 39.640%# | | |
| 21) 2-Butanone-d5 | 7.086 | 46 | 27491 | 30.749 | ug/L | 0.00 |
| Spiked Amount | 50.000 | Range 20 - 135 | Recovery = | 61.500% | | |
| 24) Chloroform-d | 7.653 | 84 | 150028 | 16.845 | ug/L | 0.00 |
| Spiked Amount | 25.000 | Range 40 - 150 | Recovery = | 67.360% | | |
| 26) 1,2-Dichloroethane-d4 | 8.305 | 65 | 74631 | 15.569 | ug/L | 0.00 |
| Spiked Amount | 25.000 | Range 70 - 130 | Recovery = | 62.280%# | | |
| 32) Benzene-d6 | 8.275 | 84 | 268793 | 16.417 | ug/L | 0.00 |
| Spiked Amount | 25.000 | Range 20 - 135 | Recovery = | 65.680% | | |
| 36) 1,2-Dichloropropane-d6 | 9.281 | 67 | 80309 | 16.948 | ug/L | 0.00 |
| Spiked Amount | 25.000 | Range 70 - 120 | Recovery = | 67.800%# | | |
| 41) Toluene-d8 | 10.323 | 98 | 298364 | 20.028 | ug/L | 0.00 |
| Spiked Amount | 25.000 | Range 30 - 130 | Recovery = | 80.120% | | |
| 43) trans-1,3-Dichloroprop... | 10.579 | 79 | 31507 | 15.557 | ug/L | 0.00 |
| Spiked Amount | 25.000 | Range 30 - 135 | Recovery = | 62.240% | | |
| 47) 2-Hexanone-d5 | 10.927 | 63 | 21095 | 32.170 | ug/L | 0.00 |
| Spiked Amount | 50.000 | Range 20 - 135 | Recovery = | 64.340% | | |
| 56) 1,1,2,2-Tetrachloroeth... | 12.695 | 84 | 61073 | 16.709 | ug/L | 0.00 |
| Spiked Amount | 25.000 | Range 45 - 120 | Recovery = | 66.840% | | |
| 66) 1,2-Dichlorobenzene-d4 | 13.853 | 152 | 66247 | 18.846 | ug/L | 0.00 |
| Spiked Amount | 25.000 | Range 75 - 120 | Recovery = | 75.400% | | |
| Target Compounds | | | | | | |
| 34) Trichloroethene | 9.092 | 95 | 17352 | 4.185 | ug/L | 99 |
| ----- | | | | | | |

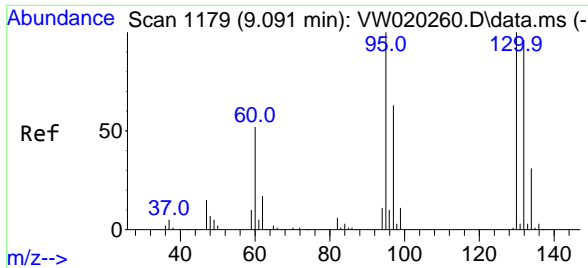
(#) = qualifier out of range (m) = manual integration (+) = signals summed

Data Path : Z:\voasrv\HPCHEM1\MSVOA_W\Data\VW093021\
 Data File : VW020271.D
 Acq On : 30 Sep 2021 15:42
 Operator : SY/VA
 Sample : M3973-16
 Misc : 8.26g/10mL/MSVOA_W/SOIL
 ALS Vial : 1 Sample Multiplier: 1

Instrument :
 MSVOA_W
 ClientSampleId :
 EW8Y2

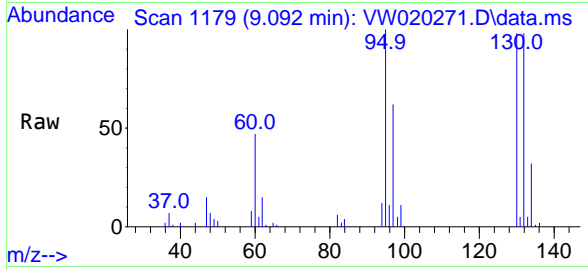
Quant Time: Oct 01 01:06:04 2021
 Quant Method : Z:\voasrv\HPCHEM1\MSVOA_W\Method\SFAMWLM092121SMA.M
 Quant Title : SFAM01.0
 QLast Update : Fri Oct 01 01:03:15 2021
 Response via : Initial Calibration





#34
 Trichloroethene
 Concen: 4.185 ug/L
 RT: 9.092 min Scan# 1179
 Delta R.T. 0.000 min
 Lab File: VW020271.D
 Acq: 30 Sep 2021 15:42

Instrument :
 MSVOA_W
 ClientSampled :
 EW8Y2



Tgt Ion: 95 Resp: 17352

| Ion | Ratio | Lower | Upper |
|-----|-------|-------|-------|
| 95 | 100 | | |
| 97 | 62.2 | 45.1 | 83.7 |
| 132 | 97.6 | 67.9 | 126.1 |
| 130 | 98.1 | 69.1 | 128.3 |

