

Data Path : Z:\voasrv\HPCHEM1\MSVOA_W\Data\VW093021\
 Data File : VW020277.D
 Acq On : 30 Sep 2021 18:05
 Operator : SY/VA
 Sample : M3974-05MSD
 Misc : 7.27g/10mL/MSVOA_W/SOIL
 ALS Vial : 1 Sample Multiplier: 1

Instrument :
 MSVOA_W
 Client Sampled :
 EW8Y9MSD

Manual Integrations
 APPROVED

MMDadoda
 10/4/2021 3:16:39 PM

Quant Time: Oct 01 01:07:22 2021
 Quant Method : Z:\voasrv\HPCHEM1\MSVOA_W\Method\SFAMWLM092121SMA.M
 Quant Title : SFAM01.0
 QLast Update : Fri Oct 01 01:03:15 2021
 Response via : Initial Calibration

Compound	R.T.	QIon	Response	Conc	Units	Dev(Min)
Internal Standards						
1) 1,4-Difluorobenzene	8.848	114	16507	25.000	ug/L	0.00
28) Chlorobenzene-d5	11.634	117	5969	25.000	ug/L	0.00
58) 1,4-Dichlorobenzene-d4	13.560	152	843	25.000	ug/L	0.00
System Monitoring Compounds						
4) Vinyl Chloride-d3	2.355	65	15972	47.297	ug/L	0.00
Spiked Amount	25.000	Range 30 - 150	Recovery	=	189.200%#	
7) Chloroethane-d5	2.904	69	7517	29.548	ug/L	0.01
Spiked Amount	25.000	Range 30 - 150	Recovery	=	118.200%	
11) 1,1-Dichloroethene-d2	4.032	63	21353	40.385	ug/L	0.00
Spiked Amount	25.000	Range 45 - 110	Recovery	=	161.520%#	
21) 2-Butanone-d5	7.098	46	491m	9.422	ug/L	0.02
Spiked Amount	50.000	Range 20 - 135	Recovery	=	18.840%#	
24) Chloroform-d	7.665	84	10284	19.810	ug/L	0.02
Spiked Amount	25.000	Range 40 - 150	Recovery	=	79.240%	
26) 1,2-Dichloroethane-d4	8.311	65	3917	14.019	ug/L	0.01
Spiked Amount	25.000	Range 70 - 130	Recovery	=	56.080%#	
32) Benzene-d6	8.281	84	25936	68.107	ug/L	0.00
Spiked Amount	25.000	Range 20 - 135	Recovery	=	272.440%#	
36) 1,2-Dichloropropane-d6	9.274	67	3924	35.605	ug/L	0.00
Spiked Amount	25.000	Range 70 - 120	Recovery	=	142.400%#	
41) Toluene-d8	10.323	98	11977	34.566	ug/L	0.00
Spiked Amount	25.000	Range 30 - 130	Recovery	=	138.280%#	
43) trans-1,3-Dichloroprop...	10.579	79	643	13.650	ug/L	0.00
Spiked Amount	25.000	Range 30 - 135	Recovery	=	54.600%	
47) 2-Hexanone-d5	10.933	63	345	22.621	ug/L	0.01
Spiked Amount	50.000	Range 20 - 135	Recovery	=	45.240%	
56) 1,1,2,2-Tetrachloroeth...	12.688	84	1598	18.797	ug/L	0.00
Spiked Amount	25.000	Range 45 - 120	Recovery	=	75.200%	
66) 1,2-Dichlorobenzene-d4	13.859	152	921m	29.137	ug/L	0.00
Spiked Amount	25.000	Range 75 - 120	Recovery	=	116.560%	
Target Compounds						
2) Dichlorodifluoromethane	2.001	85	14059	97.240	ug/L	99
3) Chloromethane	2.221	50	10863	54.336	ug/L	99
5) Vinyl chloride	2.361	62	21838	69.563	ug/L	94
6) Bromomethane	2.794	94	6922	34.108	ug/L	100
8) Chloroethane	2.940	64	7206	37.958	ug/L	93
9) Trichlorofluoromethane	3.288	101	28693	129.910	ug/L	99
10) 1,1,2-Trichloro-1,2,2-...	4.080	101	17325	71.751	ug/L	96
12) 1,1-Dichloroethene	4.062	96	10419	47.595	ug/L #	67
13) Acetone	4.129	43	1116m	25.005	ug/L	
14) Carbon disulfide	4.397	76	31124	45.210	ug/L	99
15) Methyl Acetate	4.684	43	697m	8.167	ug/L	
16) Methylene chloride	4.928	84	4694	16.116	ug/L	90
17) trans-1,2-Dichloroethene	5.434	96	10498	45.521	ug/L	88
18) Methyl tert-butyl Ether	5.440	73	4549	16.616	ug/L #	60
19) 1,1-Dichloroethane	6.226	63	11764	27.657	ug/L	90
20) cis-1,2-Dichloroethene	7.177	96	5085	21.681	ug/L	90
22) 2-Butanone	7.196	43	536m	9.257	ug/L	
23) Bromochloromethane	7.519	128	1414m	13.300	ug/L	
25) Chloroform	7.677	83	10727	24.116	ug/L	89

Data Path : Z:\voasrv\HPCHEM1\MSVOA_W\Data\VW093021\
 Data File : VW020277.D
 Acq On : 30 Sep 2021 18:05
 Operator : SY/VA
 Sample : M3974-05MSD
 Misc : 7.27g/10mL/MSVOA_W/SOIL
 ALS Vial : 1 Sample Multiplier: 1

Instrument :
 MSVOA_W
 ClientSampled :
 EW8Y9MSD

Manual Integrations
 APPROVED

MMDadoda
 10/4/2021 3:16:39 PM

Quant Time: Oct 01 01:07:22 2021
 Quant Method : Z:\voasrv\HPCHEM1\MSVOA_W\Method\SFAMWLM092121SMA.M
 Quant Title : SFAM01.0
 QLast Update : Fri Oct 01 01:03:15 2021
 Response via : Initial Calibration

Compound	R.T.	QIon	Response	Conc	Units	Dev(Min)
27) 1,2-Dichloroethane	8.403	62	4289m	14.652	ug/L	
29) Cyclohexane	7.964	56	15240	114.743	ug/L	96
30) 1,1,1-Trichloroethane	7.884	97	17710	119.736	ug/L	98
31) Carbon tetrachloride	8.073	117	17957	133.434	ug/L	97
33) Benzene	8.329	78	27130	75.312	ug/L	100
34) Trichloroethene	9.098	95	134968	1399.589	ug/L	94
35) Methylcyclohexane	9.342	83	14674	93.390	ug/L	99
37) 1,2-Dichloropropane	9.372	63	3291	36.884	ug/L #	93
38) Bromodichloromethane	9.646	83	3671	30.382	ug/L	99
39) cis-1,3-Dichloropropene	10.079	75	3191	24.247	ug/L	96
40) 4-Methyl-2-pentanone	10.213	43	1147	25.524	ug/L #	85
42) Toluene	10.390	91	15273	39.907	ug/L	98
44) trans-1,3-Dichloropropene	10.610	75	1888	15.972	ug/L	90
45) 1,1,2-Trichloroethane	10.792	97	1606	24.547	ug/L	88
46) Tetrachloroethene	10.866	164	5651	75.815	ug/L	93
48) 2-Hexanone	10.981	43	664	21.212	ug/L #	85
49) Dibromochloromethane	11.122	129	1449	18.954	ug/L	89
50) 1,2-Dibromoethane	11.244	107	1139	18.499	ug/L #	93
51) Chlorobenzene	11.658	112	5458	21.927	ug/L	96
52) Ethylbenzene	11.737	91	11578	27.466	ug/L	92
53) m,p-Xylene	11.841	106	3482	21.667	ug/L	94
54) o-Xylene	12.170	106	3694	24.848	ug/L	85
55) Styrene	12.182	104	3167	12.260	ug/L	100
57) 1,1,2,2-Tetrachloroethane	12.713	83	1297	16.597	ug/L #	90
59) Bromoform	12.347	173	596	51.855	ug/L #	96
60) Isopropylbenzene	12.463	105	10016	88.613	ug/L	96
61) 1,2,3-Trichloropropane	12.774	75	906	56.917	ug/L #	85
62) 1,3,5-Trimethylbenzene	12.945	105	4752	51.227	ug/L	97
63) 1,2,4-Trimethylbenzene	13.255	105	3839	42.129	ug/L	97
64) 1,3-Dichlorobenzene	13.493	146	1184	22.841	ug/L #	82
65) 1,4-Dichlorobenzene	13.579	146	915	17.081	ug/L #	84
67) 1,2-Dichlorobenzene	13.877	146	1221	25.863	ug/L	94
68) 1,2-Dibromo-3-chloropr...	14.481	75	87m	24.348	ug/L	
69) 1,3,5-Trichlorobenzene	14.633	180	309	8.618	ug/L #	83
71) Naphthalene	15.359	128	184	3.770	ug/L #	69

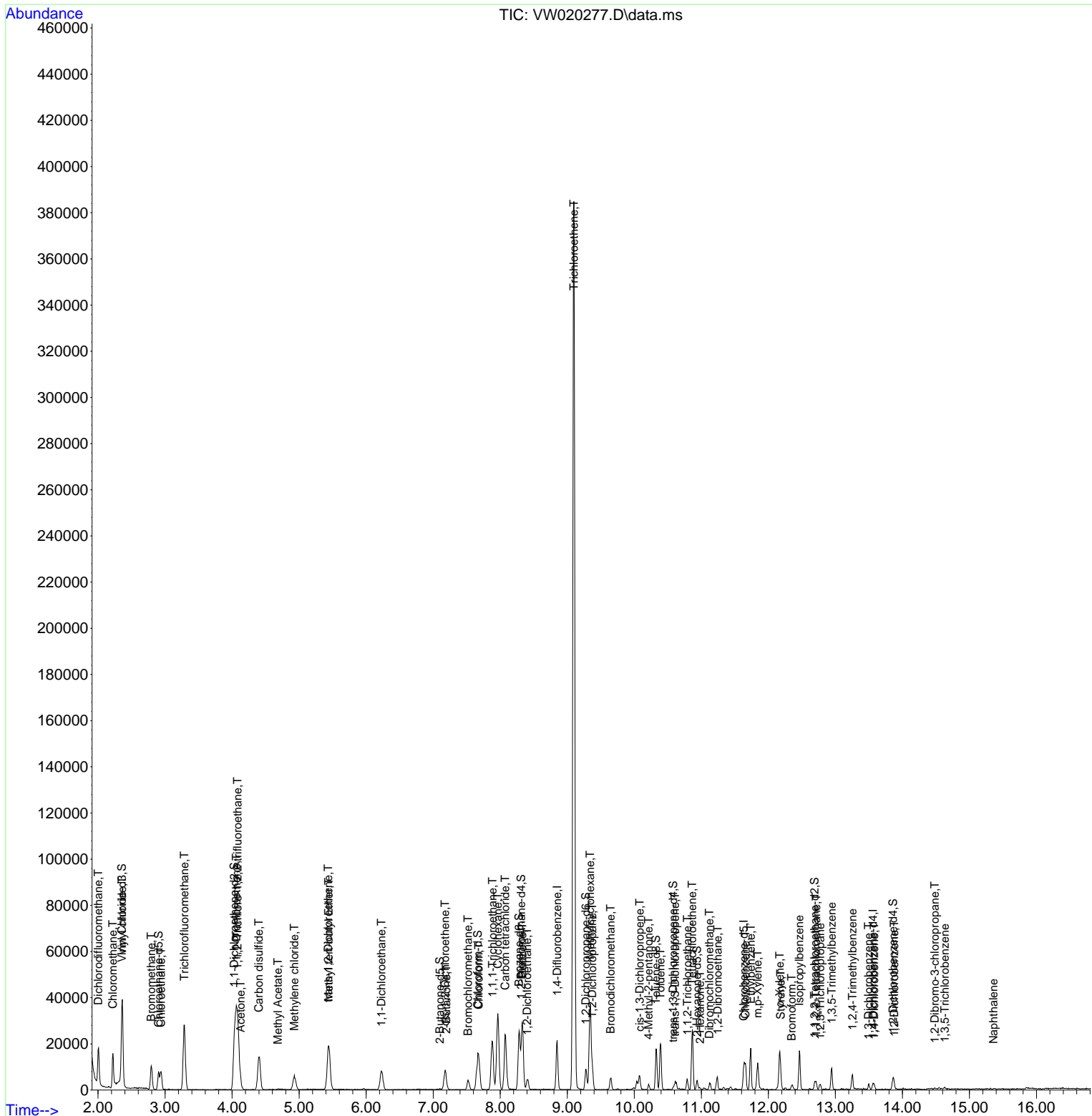
(#) = qualifier out of range (m) = manual integration (+) = signals summed

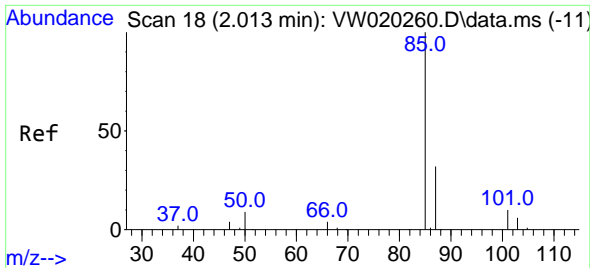
Data Path : Z:\voasrv\HPCHEM1\MSVOA_W\Data\VW093021\
 Data File : VW020277.D
 Acq On : 30 Sep 2021 18:05
 Operator : SY/VA
 Sample : M3974-05MSD
 Misc : 7.27g/10mL/MSVOA_W/SOIL
 ALS Vial : 1 Sample Multiplier: 1

Instrument :
 MSVOA_W
Client Sampled :
 EW8Y9MSD

Manual Integrations
APPROVED
 MMDadoda
 10/4/2021 3:16:39 PM

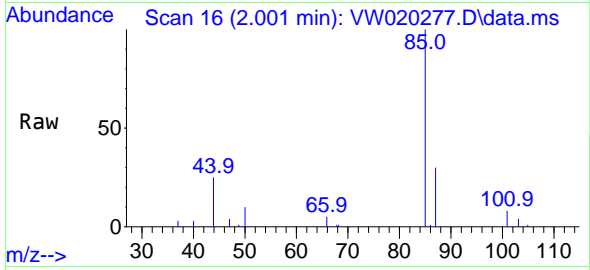
Quant Time: Oct 01 01:07:22 2021
 Quant Method : Z:\voasrv\HPCHEM1\MSVOA_W\Method\SFAMWLM092121SMA.M
 Quant Title : SFAM01.0
 QLast Update : Fri Oct 01 01:03:15 2021
 Response via : Initial Calibration





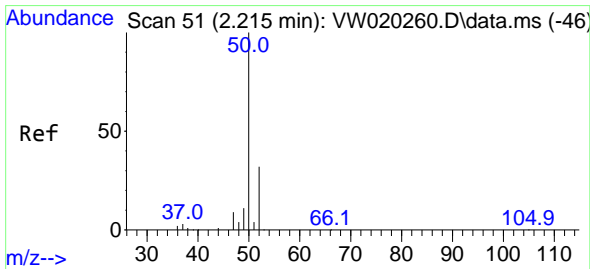
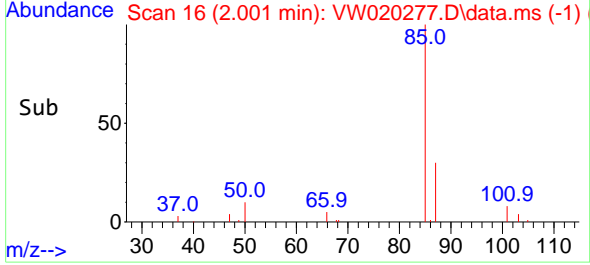
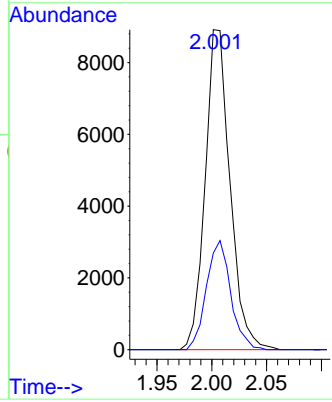
#2
 Dichlorodifluoromethane
 Concen: 97.240 ug/L
 RT: 2.001 min Scan# 16
 Delta R.T. -0.012 min
 Lab File: VW020277.D
 Acq: 30 Sep 2021 18:05

Instrument :
 MSVOA_W
ClientSampled :
 EW8Y9MSD

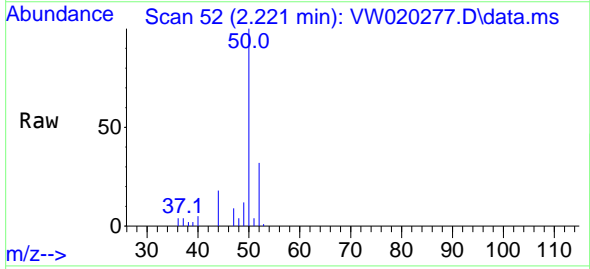


Tgt Ion: 85 Resp: 14059
 Ion Ratio Lower Upper
 85 100
 87 33.4 26.3 39.5

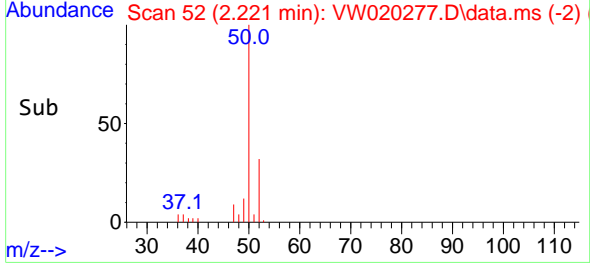
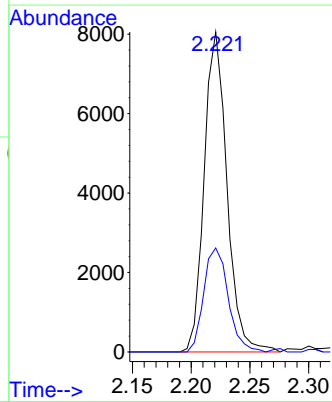
Manual Integrations
APPROVED
 MMDadoda
 10/4/2021 3:16:39 PM

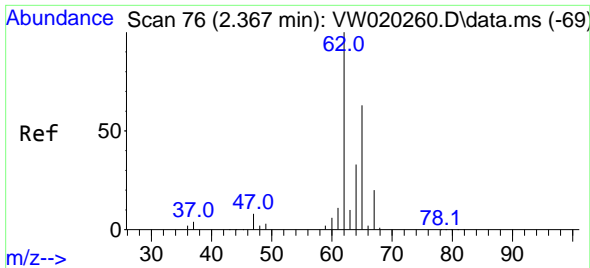


#3
 Chloromethane
 Concen: 54.336 ug/L
 RT: 2.221 min Scan# 52
 Delta R.T. 0.006 min
 Lab File: VW020277.D
 Acq: 30 Sep 2021 18:05



Tgt Ion: 50 Resp: 10863
 Ion Ratio Lower Upper
 50 100
 52 32.5 22.5 41.9





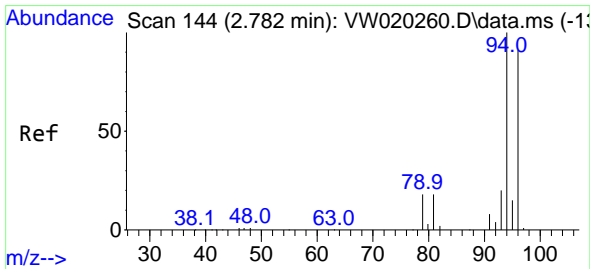
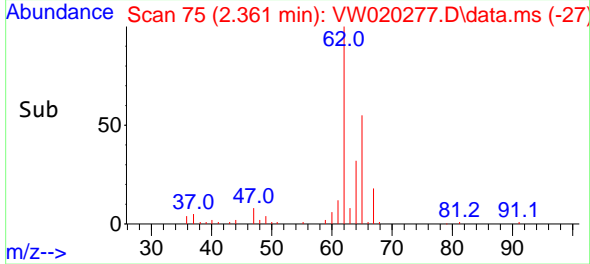
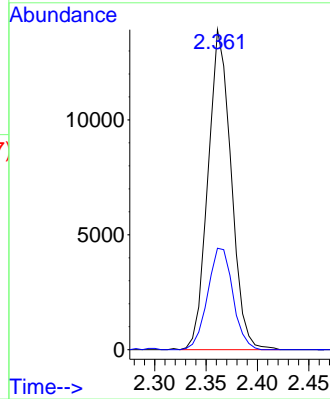
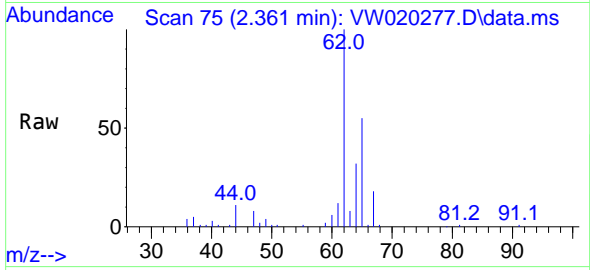
#5
 Vinyl chloride
 Concen: 69.563 ug/L
 RT: 2.361 min Scan# 75
 Delta R.T. -0.006 min
 Lab File: VW020277.D
 Acq: 30 Sep 2021 18:05

Instrument :
 MSVOA_W
 ClientSampled :
 EW8Y9MSD

Tgt Ion: 62 Resp: 21838
 Ion Ratio Lower Upper
 62 100
 64 31.7 24.5 45.5

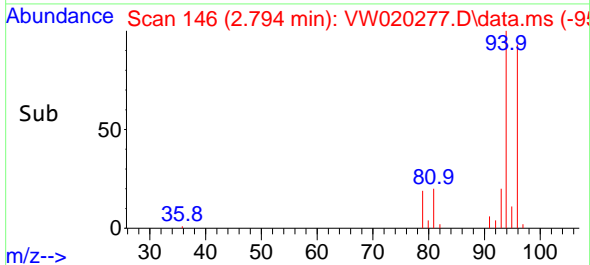
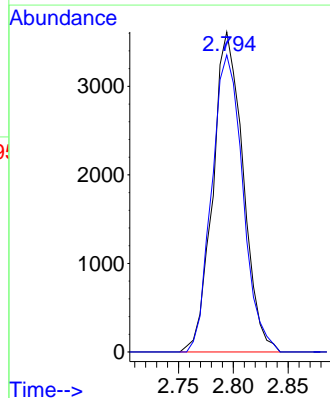
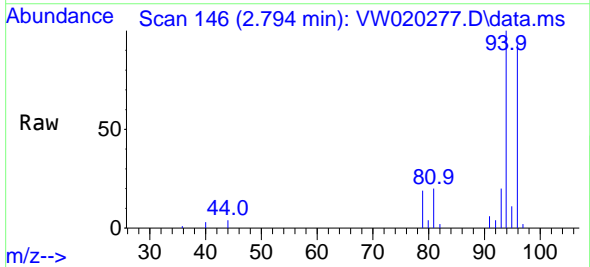
Manual Integrations
 APPROVED

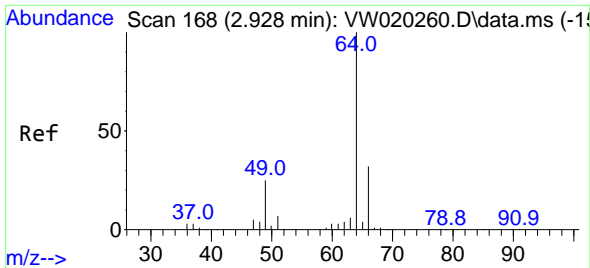
MMDadoda
 10/4/2021 3:16:39 PM



#6
 Bromomethane
 Concen: 34.108 ug/L
 RT: 2.794 min Scan# 146
 Delta R.T. 0.012 min
 Lab File: VW020277.D
 Acq: 30 Sep 2021 18:05

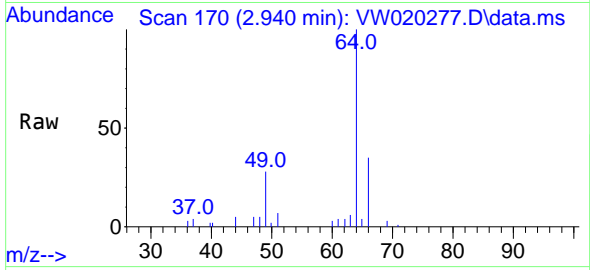
Tgt Ion: 94 Resp: 6922
 Ion Ratio Lower Upper
 94 100
 96 92.8 64.8 120.3





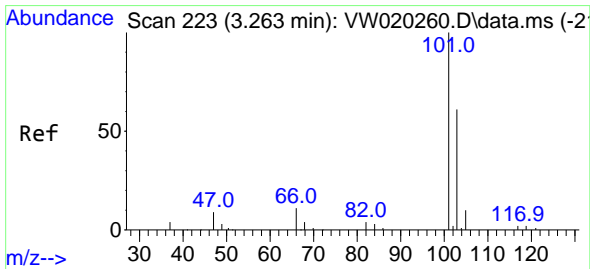
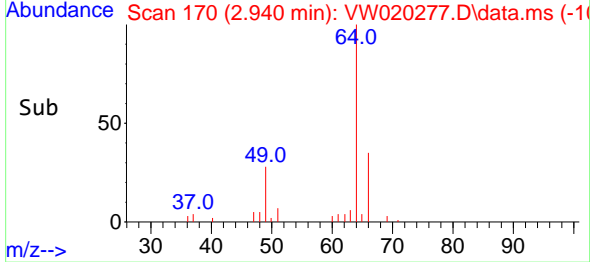
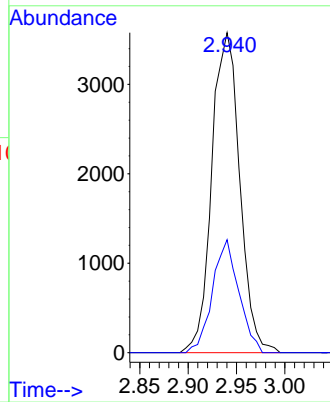
#8
 Chloroethane
 Concen: 37.958 ug/L
 RT: 2.940 min Scan# 170
 Delta R.T. 0.012 min
 Lab File: VW020277.D
 Acq: 30 Sep 2021 18:05

Instrument :
 MSVOA_W
ClientSampled :
 EW8Y9MSD

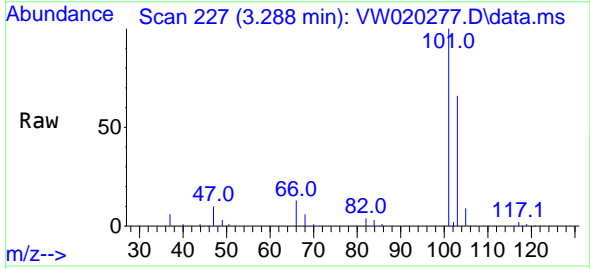


Tgt Ion: 64 Resp: 7206
 Ion Ratio Lower Upper
 64 100
 66 35.3 22.0 40.8

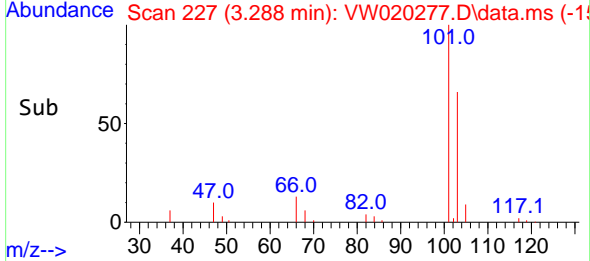
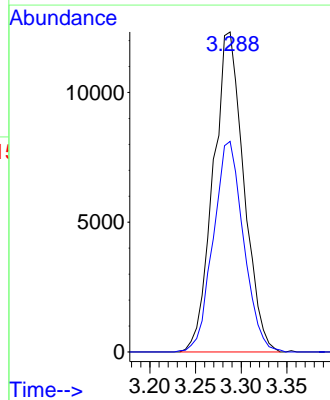
Manual Integrations
APPROVED
 MMDadoda
 10/4/2021 3:16:39 PM

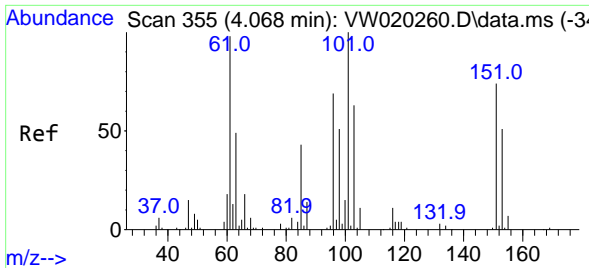


#9
 Trichlorofluoromethane
 Concen: 129.910 ug/L
 RT: 3.288 min Scan# 227
 Delta R.T. 0.025 min
 Lab File: VW020277.D
 Acq: 30 Sep 2021 18:05



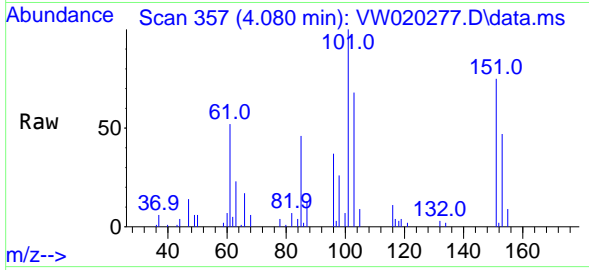
Tgt Ion: 101 Resp: 28693
 Ion Ratio Lower Upper
 101 100
 103 65.2 51.3 76.9





#10
 1,1,2-Trichloro-1,2,2-trifluoroethane
 Concen: 71.751 ug/L
 RT: 4.080 min Scan# 357
 Delta R.T. 0.012 min
 Lab File: VW020277.D
 Acq: 30 Sep 2021 18:05

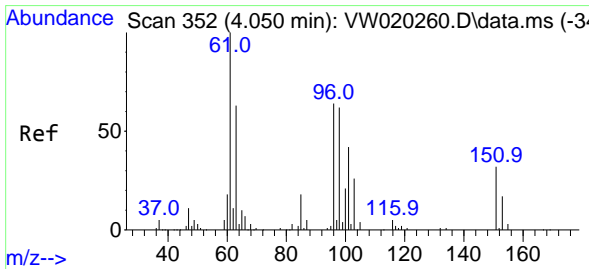
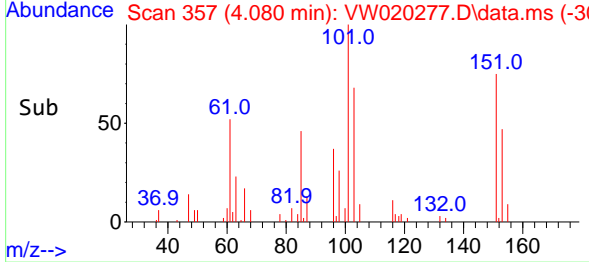
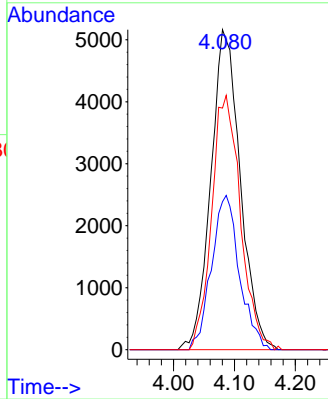
Instrument :
 MSVOA_W
Client Sampled :
 EW8Y9MSD



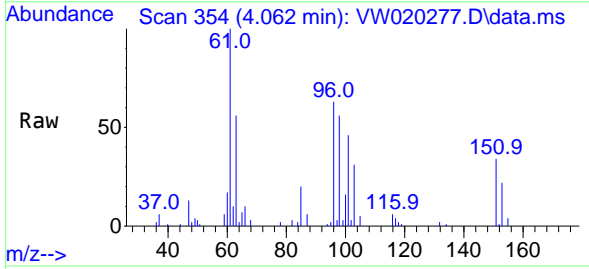
Tgt Ion: 101 Resp: 17325

Ion	Ratio	Lower	Upper
101	100		
85	45.8	35.4	53.0
151	77.3	59.0	88.6

Manual Integrations
APPROVED
 MMDadoda
 10/4/2021 3:16:39 PM

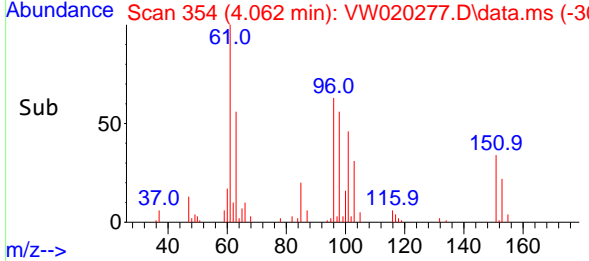
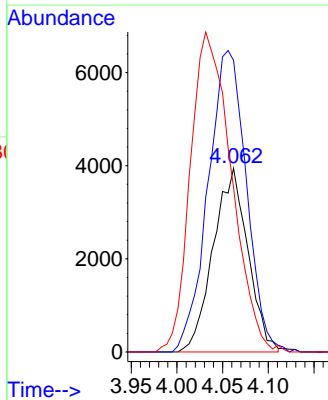


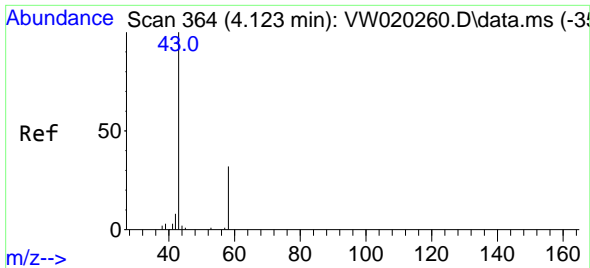
#12
 1,1-Dichloroethene
 Concen: 47.595 ug/L
 RT: 4.062 min Scan# 354
 Delta R.T. 0.012 min
 Lab File: VW020277.D
 Acq: 30 Sep 2021 18:05



Tgt Ion: 96 Resp: 10419

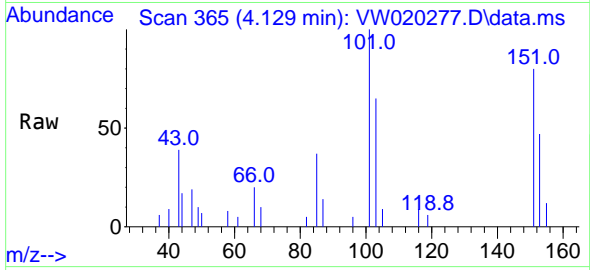
Ion	Ratio	Lower	Upper
96	100		
61	158.7	126.1	234.3
63	89.5	112.6	209.0#





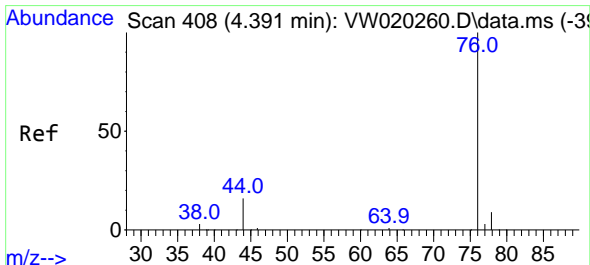
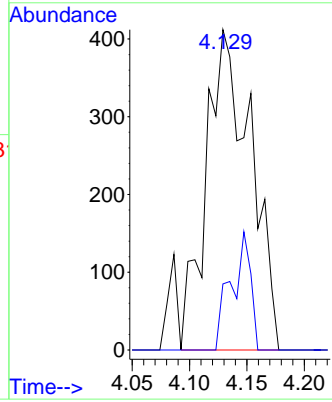
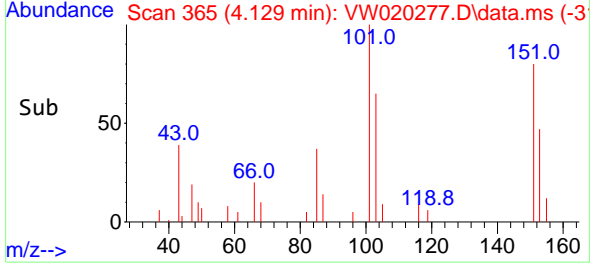
#13
 Acetone
 Concen: 25.005 ug/L m
 RT: 4.129 min Scan# 365
 Delta R.T. 0.006 min
 Lab File: VW020277.D
 Acq: 30 Sep 2021 18:05

Instrument :
 MSVOA_W
ClientSampled :
 EW8Y9MSD

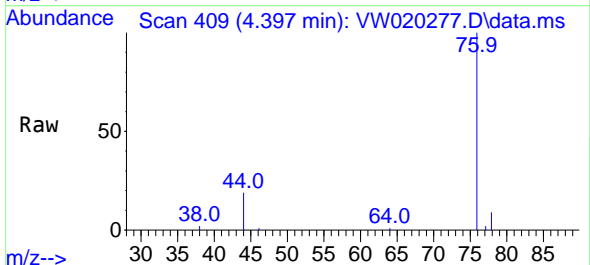


Tgt Ion: 43 Resp: 1116
 Ion Ratio Lower Upper
 43 100
 58 7.8 0.0 61.6

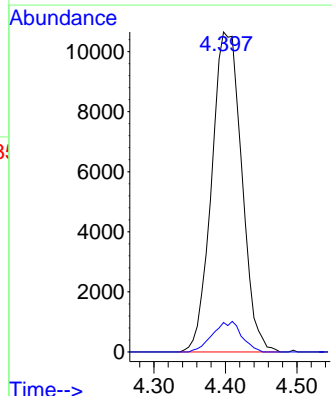
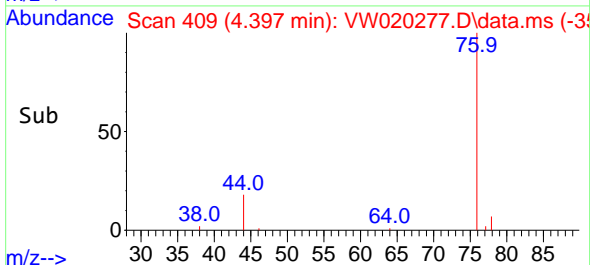
Manual Integrations
APPROVED
 MMDadoda
 10/4/2021 3:16:39 PM

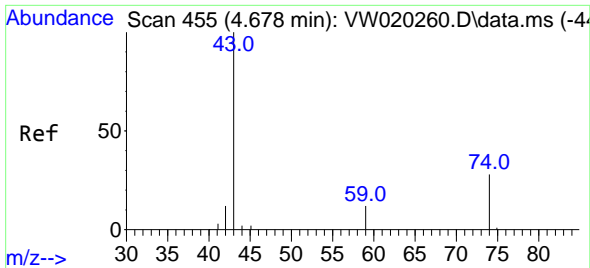


#14
 Carbon disulfide
 Concen: 45.210 ug/L
 RT: 4.397 min Scan# 409
 Delta R.T. 0.006 min
 Lab File: VW020277.D
 Acq: 30 Sep 2021 18:05



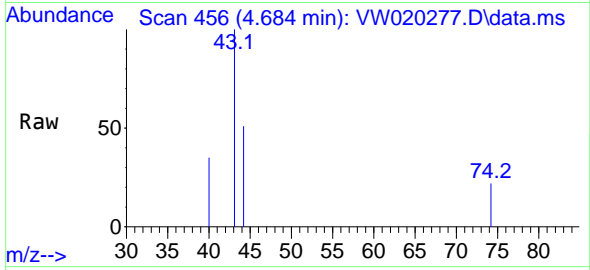
Tgt Ion: 76 Resp: 31124
 Ion Ratio Lower Upper
 76 100
 78 9.2 7.5 11.3





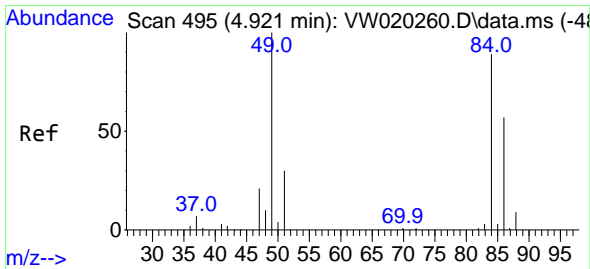
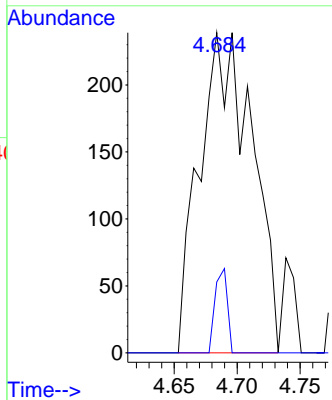
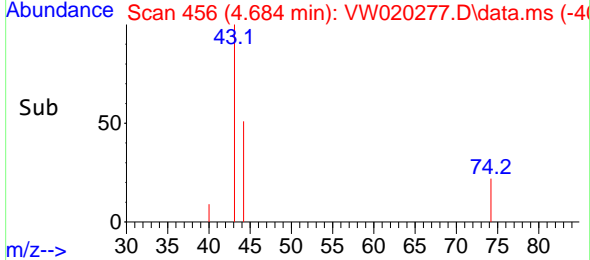
#15
 Methyl Acetate
 Concen: 8.167 ug/L m
 RT: 4.684 min Scan# 456
 Delta R.T. 0.006 min
 Lab File: VW020277.D
 Acq: 30 Sep 2021 18:05

Instrument :
 MSVOA_W
ClientSampled :
 EW8Y9MSD

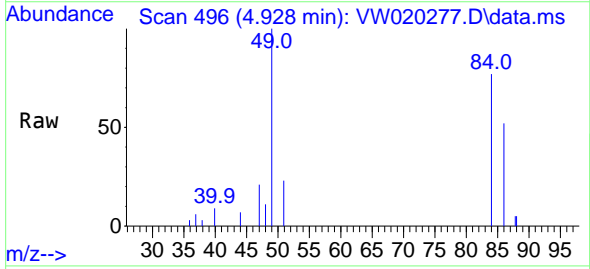


Tgt Ion: 43 Resp: 697
 Ion Ratio Lower Upper
 43 100
 74 6.0 20.0 30.0#

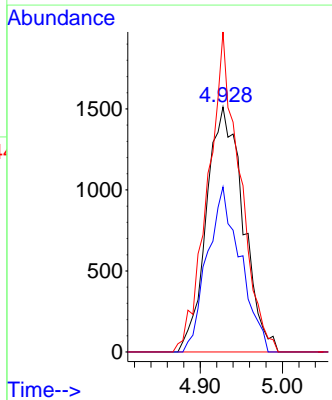
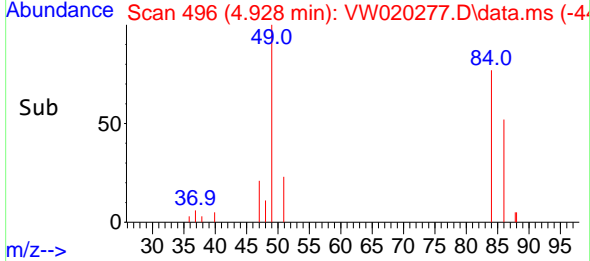
Manual Integrations
APPROVED
 MMDadoda
 10/4/2021 3:16:39 PM

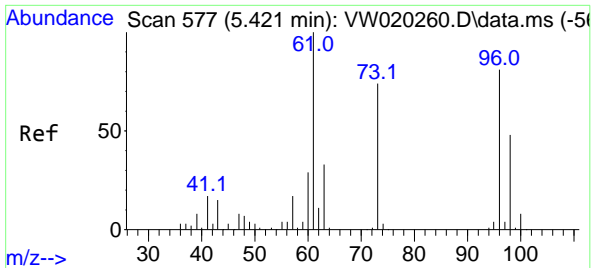


#16
 Methylene chloride
 Concen: 16.116 ug/L
 RT: 4.928 min Scan# 496
 Delta R.T. 0.006 min
 Lab File: VW020277.D
 Acq: 30 Sep 2021 18:05



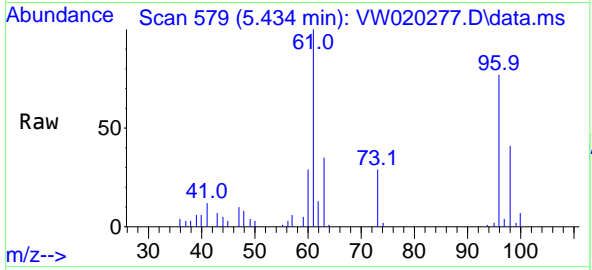
Tgt Ion: 84 Resp: 4694
 Ion Ratio Lower Upper
 84 100
 86 67.3 42.6 79.0
 49 130.6 83.4 154.8





#17
 trans-1,2-Dichloroethene
 Concen: 45.521 ug/L
 RT: 5.434 min Scan# 579
 Delta R.T. 0.012 min
 Lab File: VW020277.D
 Acq: 30 Sep 2021 18:05

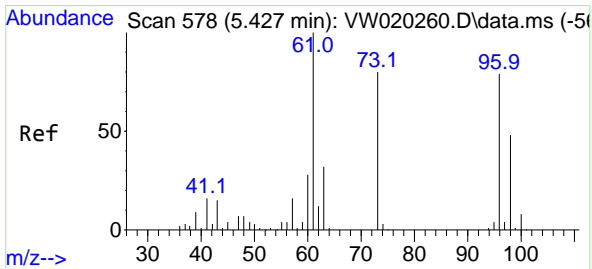
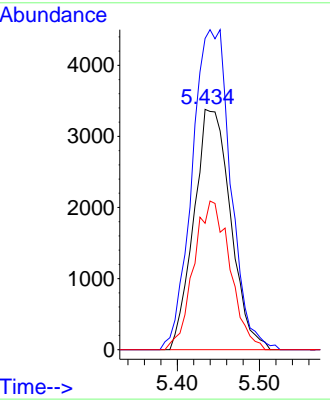
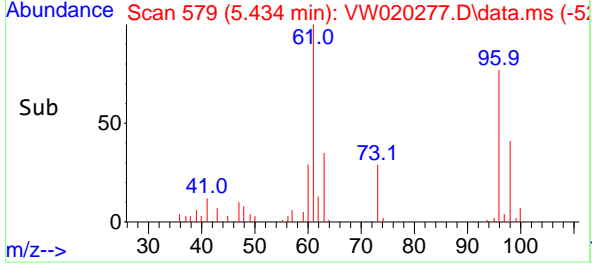
Instrument :
 MSVOA_W
ClientSampled :
 EW8Y9MSD



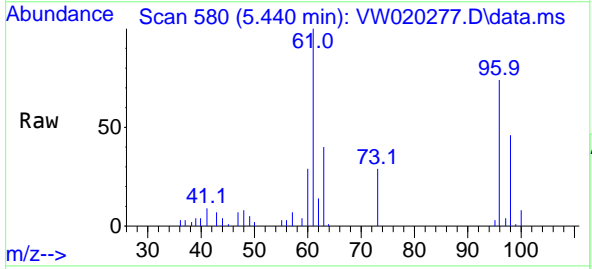
Tgt Ion: 96 Resp: 10498

Ion	Ratio	Lower	Upper
96	100		
61	129.5	98.3	182.5
98	52.6	46.6	86.6

Manual Integrations
APPROVED
 MMDadoda
 10/4/2021 3:16:39 PM

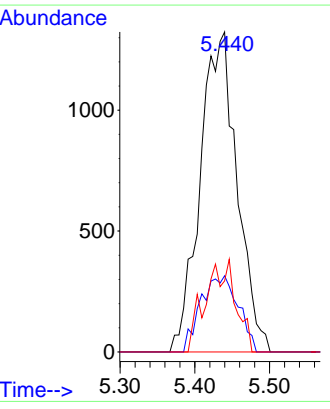
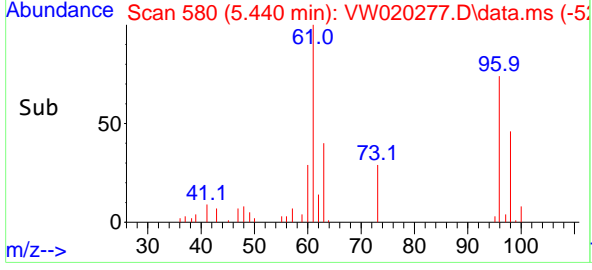


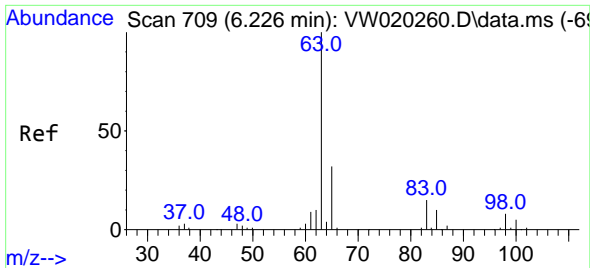
#18
 Methyl tert-butyl Ether
 Concen: 16.616 ug/L
 RT: 5.440 min Scan# 580
 Delta R.T. 0.012 min
 Lab File: VW020277.D
 Acq: 30 Sep 2021 18:05



Tgt Ion: 73 Resp: 4549

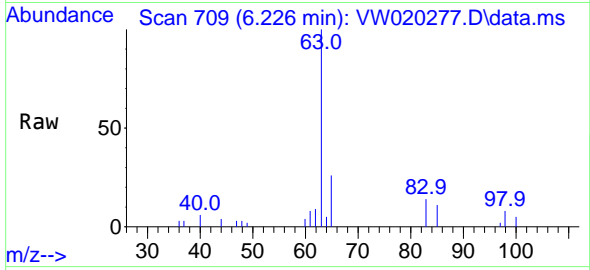
Ion	Ratio	Lower	Upper
73	100		
43	0.0	17.4	26.0#
57	5.3	17.4	26.0#





#19
 1,1-Dichloroethane
 Concen: 27.657 ug/L
 RT: 6.226 min Scan# 709
 Delta R.T. 0.000 min
 Lab File: VW020277.D
 Acq: 30 Sep 2021 18:05

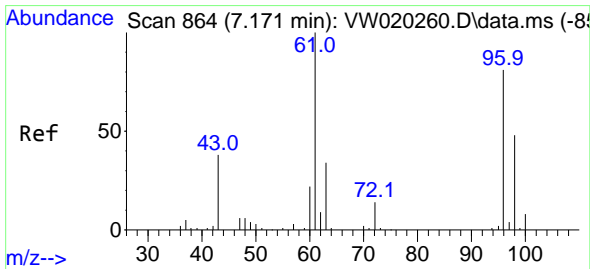
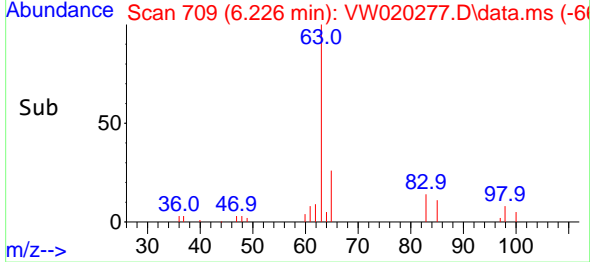
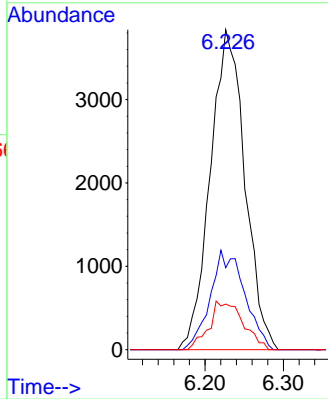
Instrument :
 MSVOA_W
ClientSampled :
 EW8Y9MSD



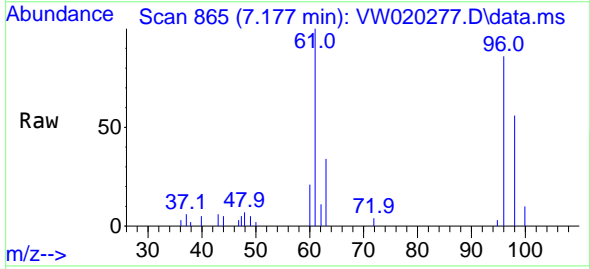
Tgt Ion: 63 Resp: 11764

Ion	Ratio	Lower	Upper
63	100		
65	25.6	23.1	42.9
83	14.3	9.4	17.6

Manual Integrations
APPROVED
 MMDadoda
 10/4/2021 3:16:39 PM

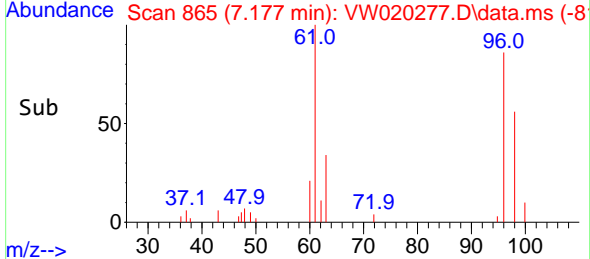
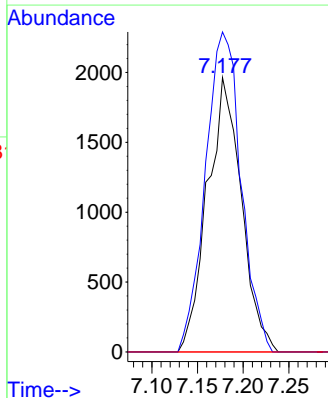


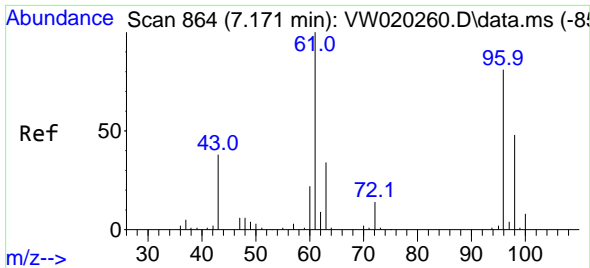
#20
 cis-1,2-Dichloroethene
 Concen: 21.681 ug/L
 RT: 7.177 min Scan# 865
 Delta R.T. 0.006 min
 Lab File: VW020277.D
 Acq: 30 Sep 2021 18:05



Tgt Ion: 96 Resp: 5085

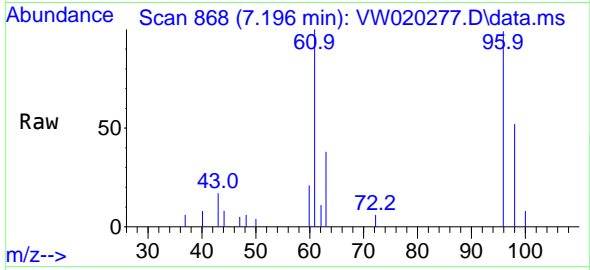
Ion	Ratio	Lower	Upper
96	100		
61	116.6	89.9	167.0
68	0.0	0.0	0.0





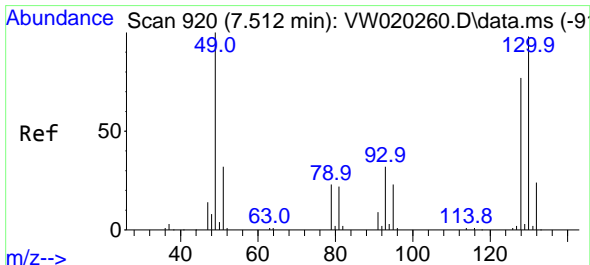
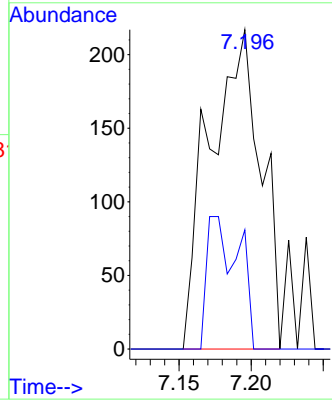
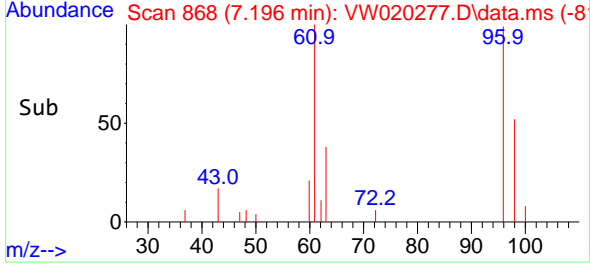
#22
 2-Butanone
 Concen: 9.257 ug/L m
 RT: 7.196 min Scan# 868
 Delta R.T. 0.025 min
 Lab File: VW020277.D
 Acq: 30 Sep 2021 18:05

Instrument :
 MSVOA_W
ClientSampled :
 EW8Y9MSD

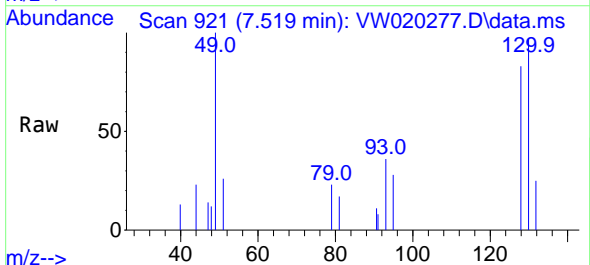


Tgt Ion: 43 Resp: 536
 Ion Ratio Lower Upper
 43 100
 72 9.7 14.1 42.2#

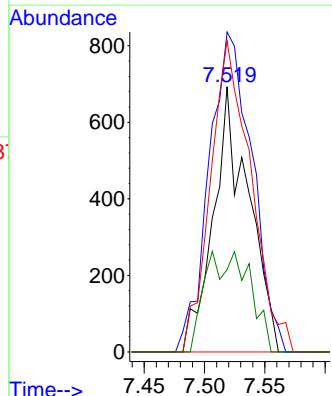
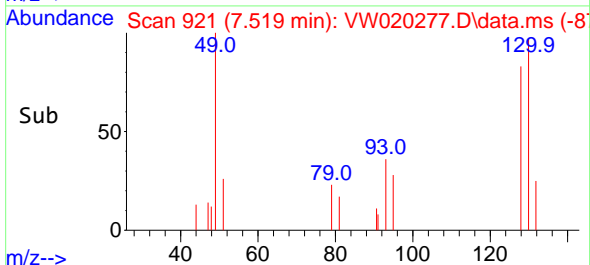
Manual Integrations
APPROVED
 MMDadoda
 10/4/2021 3:16:39 PM

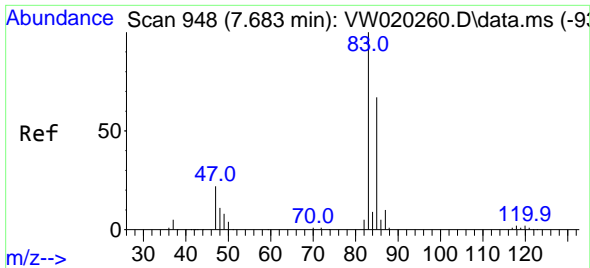


#23
 Bromochloromethane
 Concen: 13.300 ug/L m
 RT: 7.519 min Scan# 921
 Delta R.T. 0.006 min
 Lab File: VW020277.D
 Acq: 30 Sep 2021 18:05



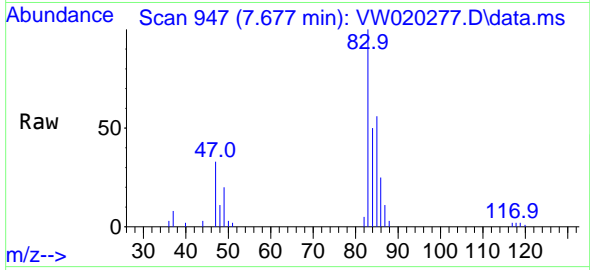
Tgt Ion: 128 Resp: 1414
 Ion Ratio Lower Upper
 128 100
 49 120.6 114.7 213.1
 130 117.3 94.2 175.0
 51 31.0 40.9 61.3#





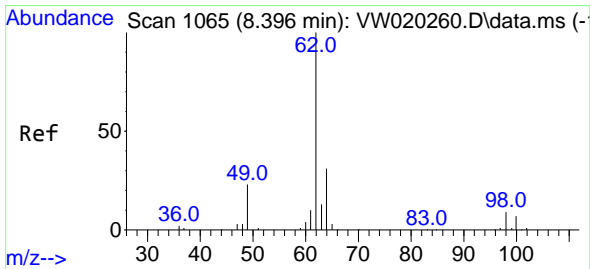
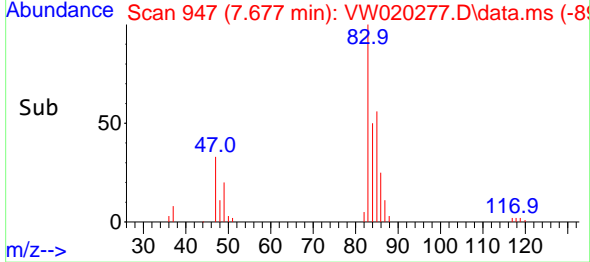
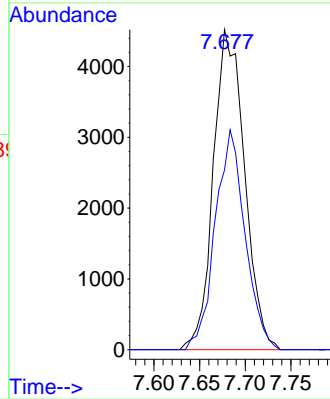
#25
 Chloroform
 Concen: 24.116 ug/L
 RT: 7.677 min Scan# 947
 Delta R.T. -0.006 min
 Lab File: VW020277.D
 Acq: 30 Sep 2021 18:05

Instrument :
 MSVOA_W
ClientSampled :
 EW8Y9MSD

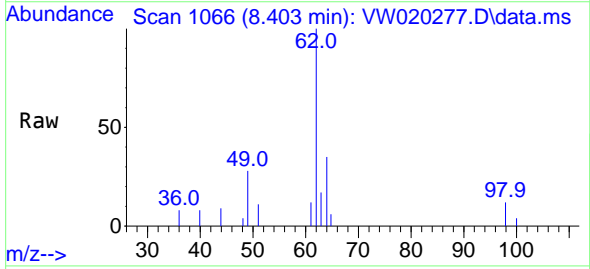


Tgt Ion: 83 Resp: 10727
 Ion Ratio Lower Upper
 83 100
 85 56.2 45.6 84.8

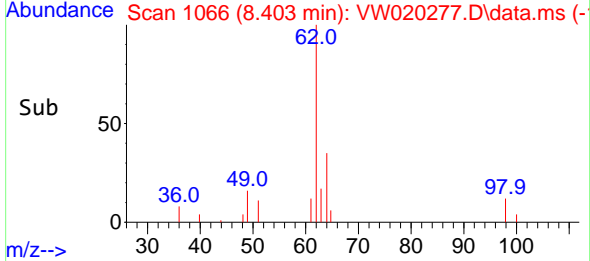
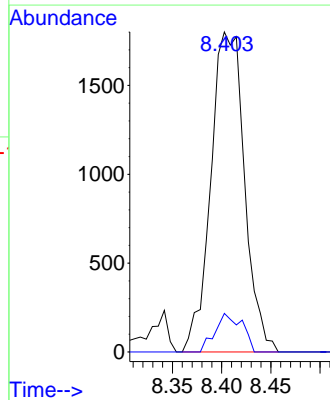
Manual Integrations
APPROVED
 MMDadoda
 10/4/2021 3:16:39 PM

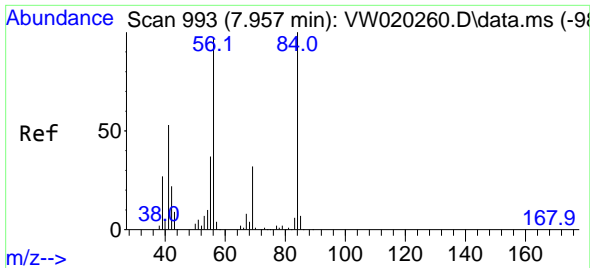


#27
 1,2-Dichloroethane
 Concen: 14.652 ug/L m
 RT: 8.403 min Scan# 1066
 Delta R.T. 0.006 min
 Lab File: VW020277.D
 Acq: 30 Sep 2021 18:05



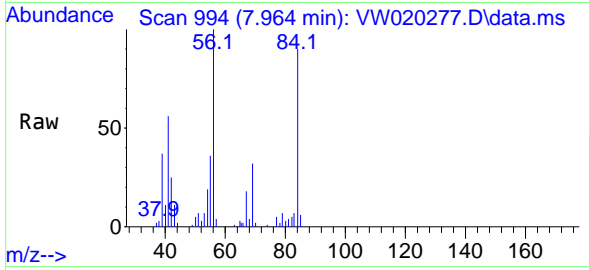
Tgt Ion: 62 Resp: 4289
 Ion Ratio Lower Upper
 62 100
 98 12.0 6.9 10.3#





#29
 Cyclohexane
 Concen: 114.743 ug/L
 RT: 7.964 min Scan# 994
 Delta R.T. 0.006 min
 Lab File: VW020277.D
 Acq: 30 Sep 2021 18:05

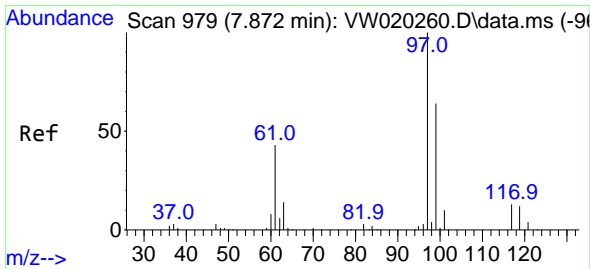
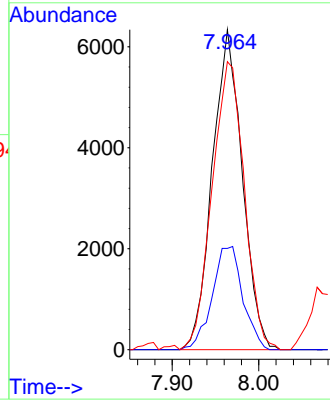
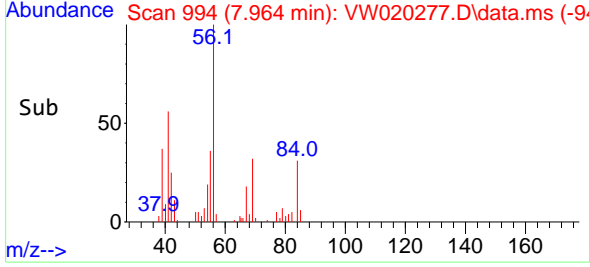
Instrument :
 MSVOA_W
ClientSampled :
 EW8Y9MSD



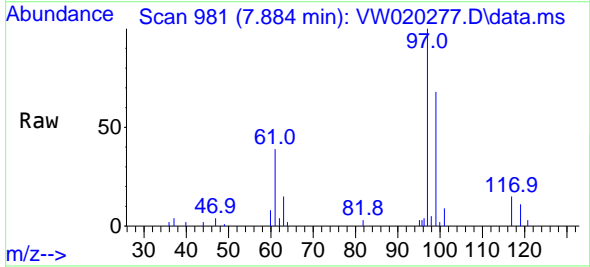
Tgt Ion: 56 Resp: 15240
 Ion Ratio Lower Upper
 56 100
 69 32.9 25.7 38.5
 84 96.5 73.4 110.2

Manual Integrations
APPROVED

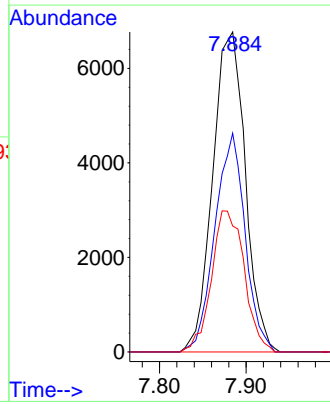
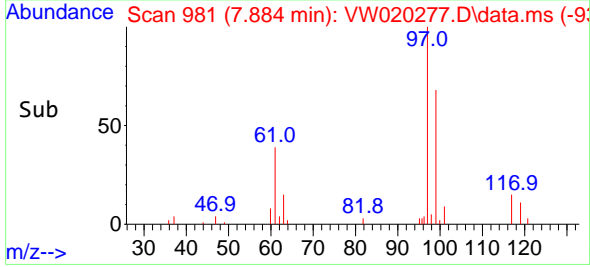
MMDadoda
 10/4/2021 3:16:39 PM

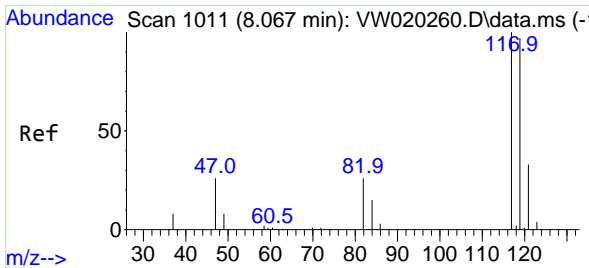


#30
 1,1,1-Trichloroethane
 Concen: 119.736 ug/L
 RT: 7.884 min Scan# 981
 Delta R.T. 0.012 min
 Lab File: VW020277.D
 Acq: 30 Sep 2021 18:05



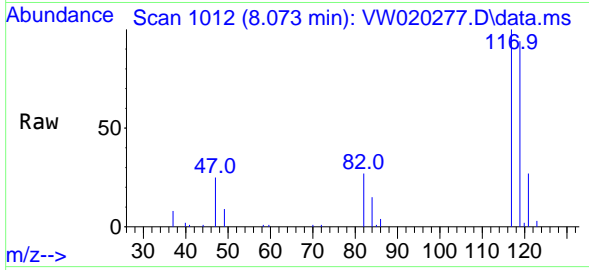
Tgt Ion: 97 Resp: 17710
 Ion Ratio Lower Upper
 97 100
 99 63.4 51.4 77.0
 61 44.3 37.5 56.3





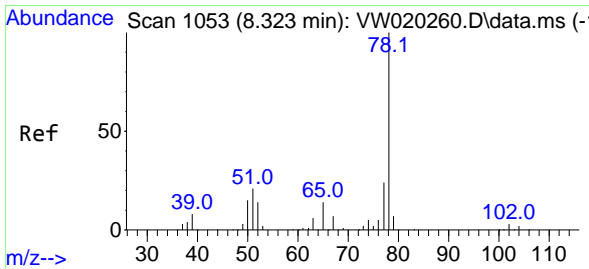
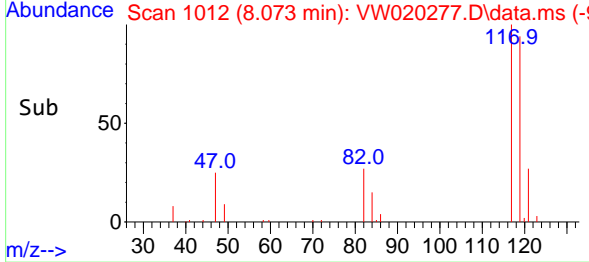
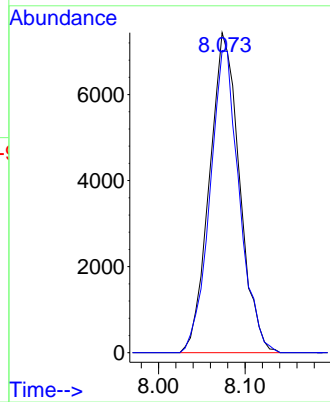
#31
 Carbon tetrachloride
 Concen: 133.434 ug/L
 RT: 8.073 min Scan# 1012
 Delta R.T. 0.006 min
 Lab File: VW020277.D
 Acq: 30 Sep 2021 18:05

Instrument :
 MSVOA_W
ClientSampled :
 EW8Y9MSD

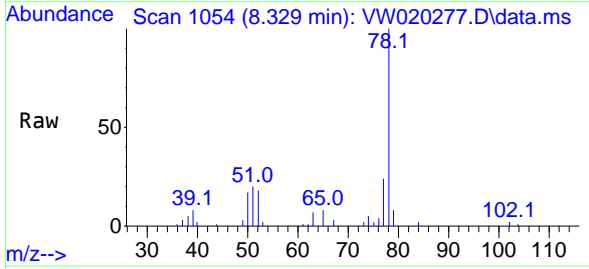


Tgt Ion:117 Resp: 17957
 Ion Ratio Lower Upper
 117 100
 119 92.6 76.4 114.6

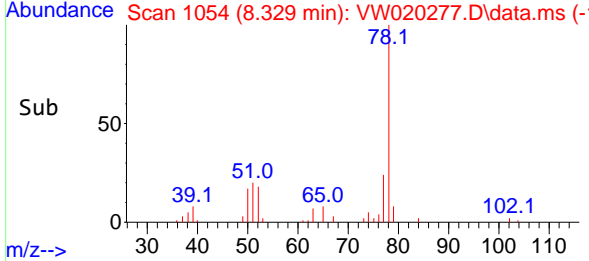
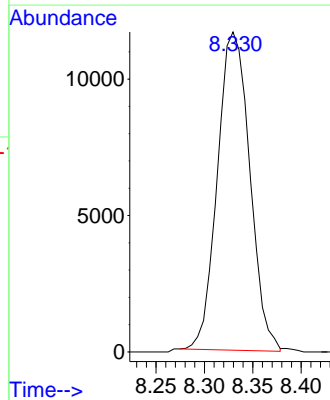
Manual Integrations
APPROVED
 MMDadoda
 10/4/2021 3:16:39 PM

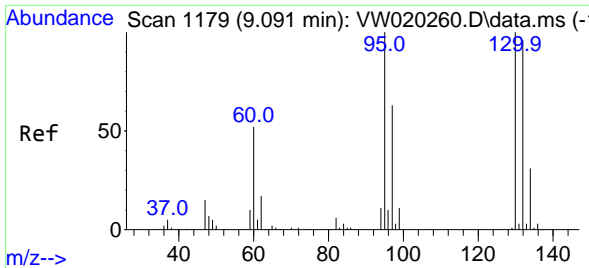


#33
 Benzene
 Concen: 75.312 ug/L
 RT: 8.329 min Scan# 1054
 Delta R.T. 0.006 min
 Lab File: VW020277.D
 Acq: 30 Sep 2021 18:05



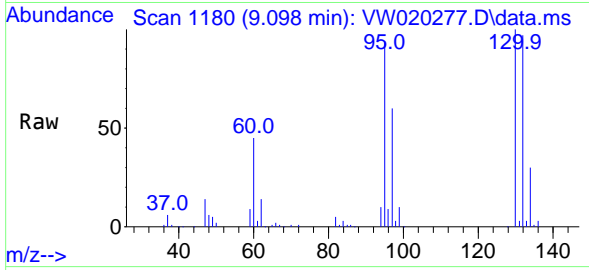
Tgt Ion: 78 Resp: 27130





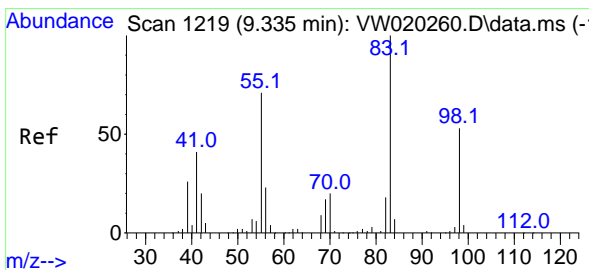
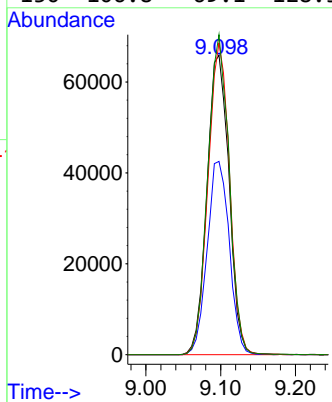
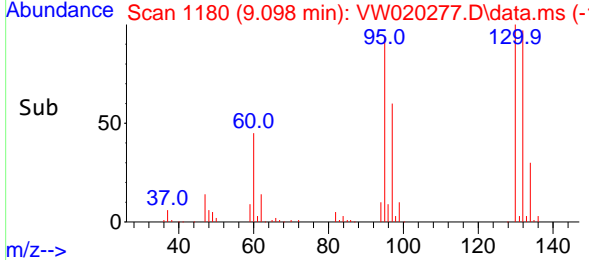
#34
 Trichloroethene
 Concen: 1399.589 ug/L
 RT: 9.098 min Scan# 1180
 Delta R.T. 0.006 min
 Lab File: VW020277.D
 Acq: 30 Sep 2021 18:05

Instrument :
 MSVOA_W
 ClientSampled :
 EW8Y9MSD

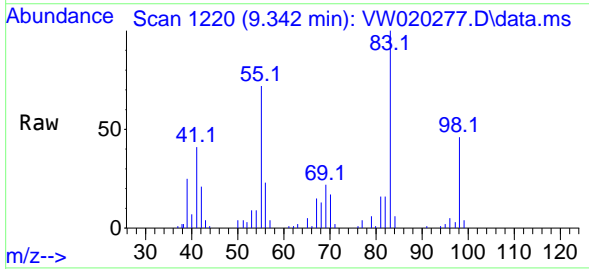


Tgt Ion: 95 Resp: 134968
 Ion Ratio Lower Upper
 95 100
 97 64.5 45.1 83.7
 132 104.1 67.9 126.1
 130 106.8 69.1 128.3

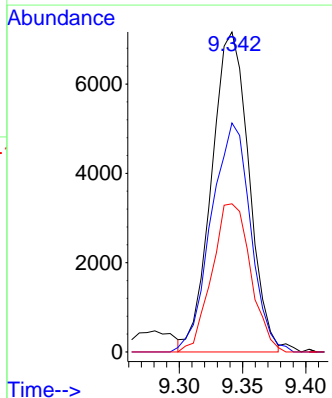
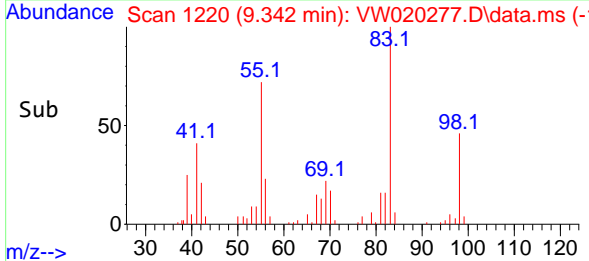
Manual Integrations
APPROVED
 MMDadoda
 10/4/2021 3:16:39 PM

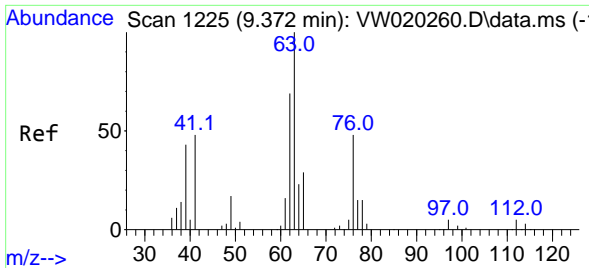


#35
 Methylcyclohexane
 Concen: 93.390 ug/L
 RT: 9.342 min Scan# 1220
 Delta R.T. 0.006 min
 Lab File: VW020277.D
 Acq: 30 Sep 2021 18:05



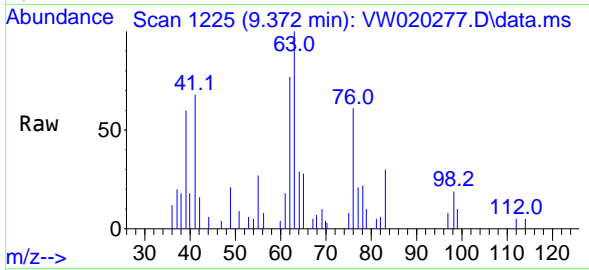
Tgt Ion: 83 Resp: 14674
 Ion Ratio Lower Upper
 83 100
 55 75.7 61.4 92.2
 98 48.0 38.1 57.1





#37
 1,2-Dichloropropane
 Concen: 36.884 ug/L
 RT: 9.372 min Scan# 1225
 Delta R.T. 0.000 min
 Lab File: VW020277.D
 Acq: 30 Sep 2021 18:05

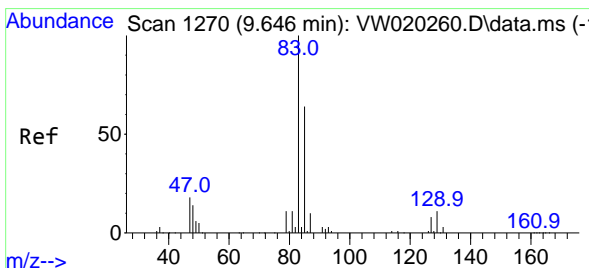
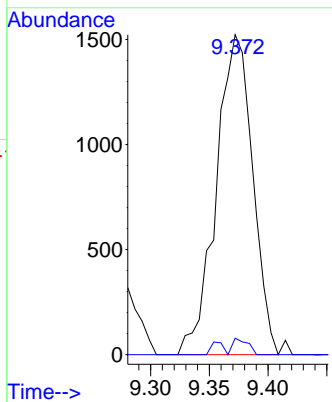
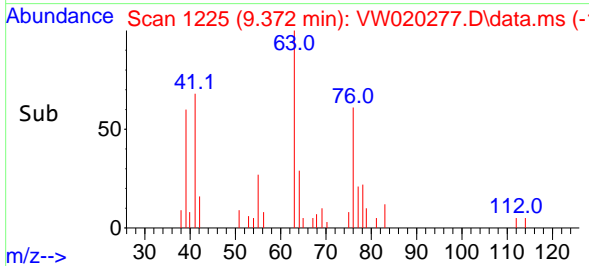
Instrument :
 MSVOA_W
 ClientSampled :
 EW8Y9MSD



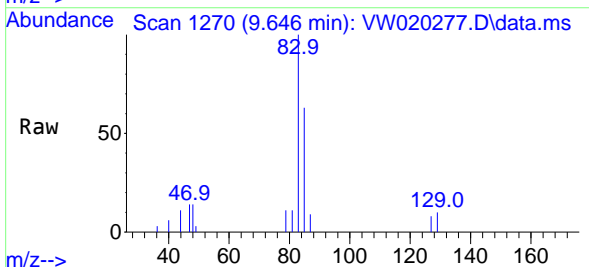
Tgt Ion: 63 Resp: 3291
 Ion Ratio Lower Upper
 63 100
 112 2.1 3.6 5.4#

Manual Integrations
 APPROVED

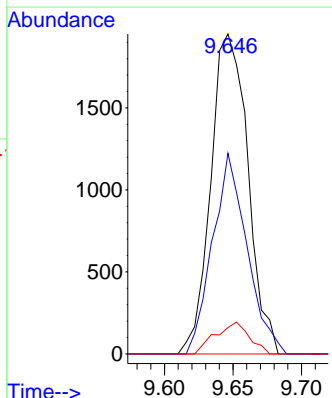
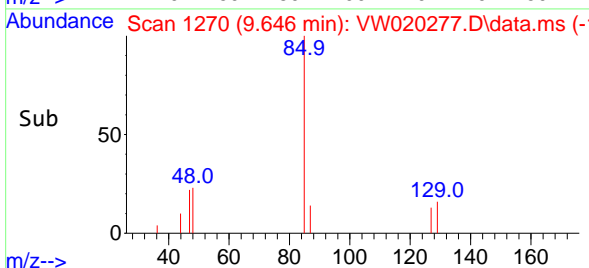
MMDadoda
 10/4/2021 3:16:39 PM

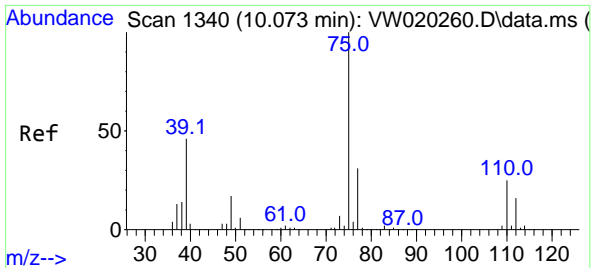


#38
 Bromodichloromethane
 Concen: 30.382 ug/L
 RT: 9.646 min Scan# 1270
 Delta R.T. 0.000 min
 Lab File: VW020277.D
 Acq: 30 Sep 2021 18:05



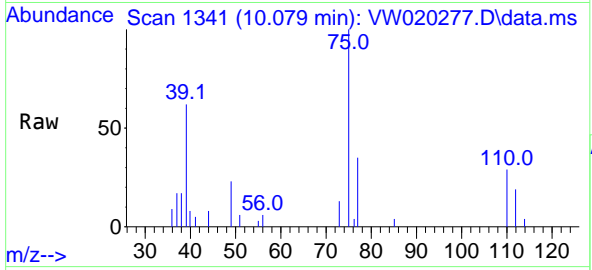
Tgt Ion: 83 Resp: 3671
 Ion Ratio Lower Upper
 83 100
 85 62.7 44.4 82.5
 127 8.3 6.5 9.7





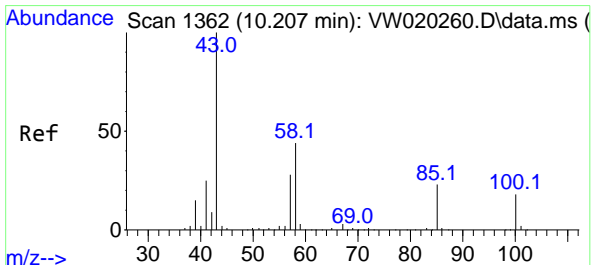
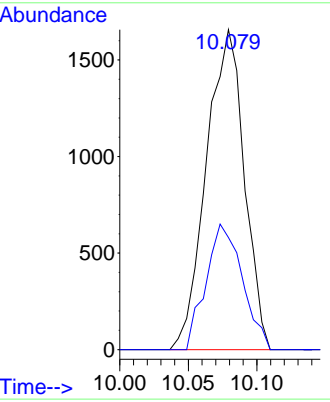
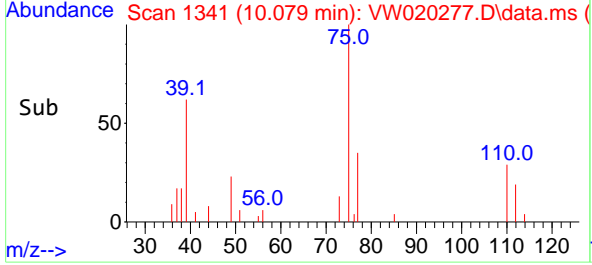
#39
 cis-1,3-Dichloropropene
 Concen: 24.247 ug/L
 RT: 10.079 min Scan# 1341
 Delta R.T. 0.006 min
 Lab File: VW020277.D
 Acq: 30 Sep 2021 18:05

Instrument :
 MSVOA_W
ClientSampled :
 EW8Y9MSD

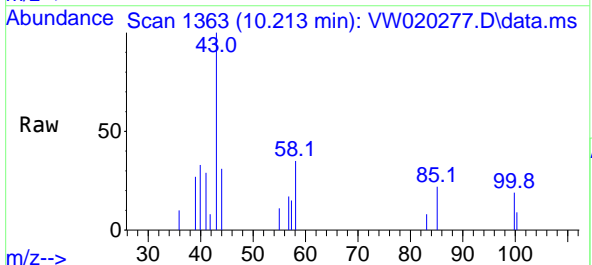


Tgt Ion: 75 Resp: 3191
 Ion Ratio Lower Upper
 75 100
 77 35.1 23.0 42.6

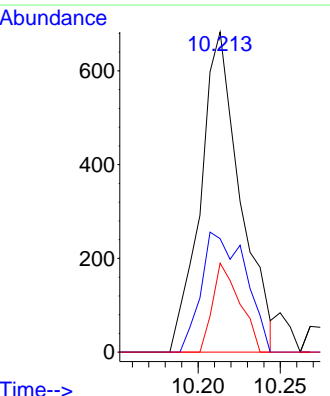
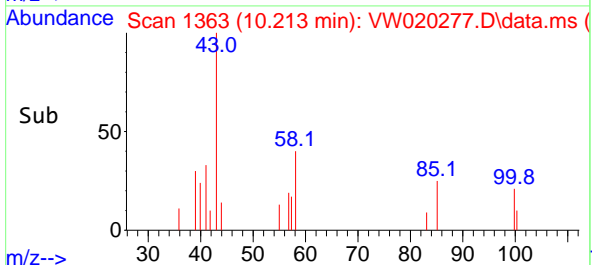
Manual Integrations
APPROVED
 MMDadoda
 10/4/2021 3:16:39 PM

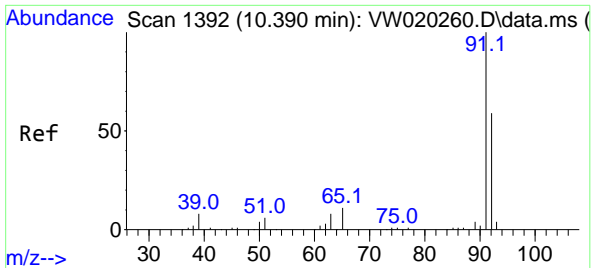


#40
 4-Methyl-2-pentanone
 Concen: 25.524 ug/L
 RT: 10.213 min Scan# 1363
 Delta R.T. 0.006 min
 Lab File: VW020277.D
 Acq: 30 Sep 2021 18:05



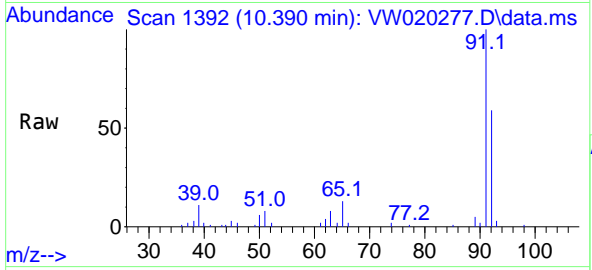
Tgt Ion: 43 Resp: 1147
 Ion Ratio Lower Upper
 43 100
 58 27.6 31.3 46.9#
 100 18.9 13.3 19.9





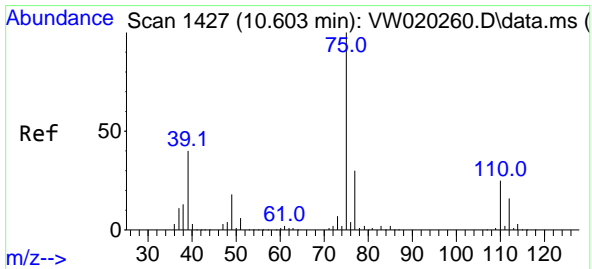
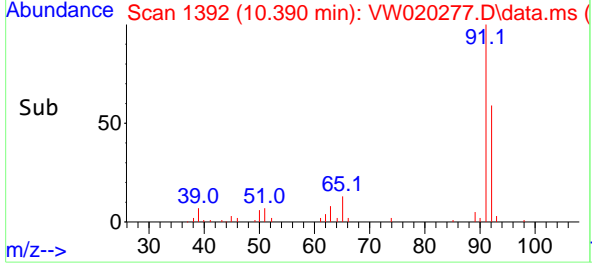
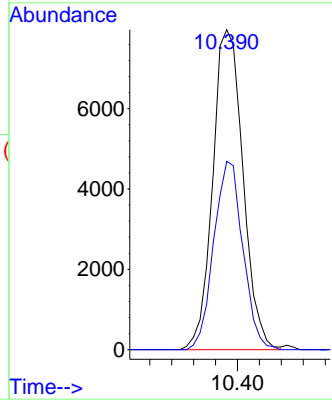
#42
 Toluene
 Concen: 39.907 ug/L
 RT: 10.390 min Scan# 1392
 Delta R.T. 0.000 min
 Lab File: VW020277.D
 Acq: 30 Sep 2021 18:05

Instrument :
 MSVOA_W
ClientSampled :
 EW8Y9MSD

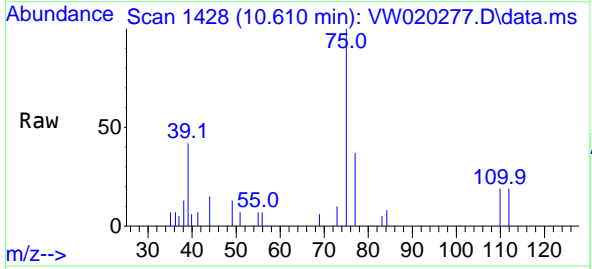


Tgt Ion: 91 Resp: 15273
 Ion Ratio Lower Upper
 91 100
 92 58.9 42.2 78.4

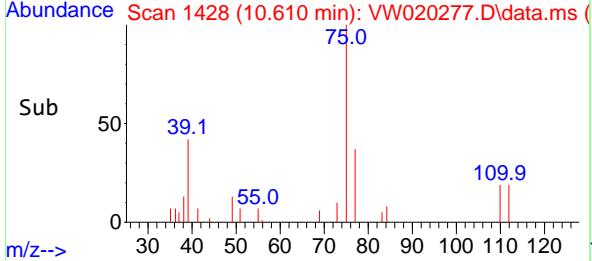
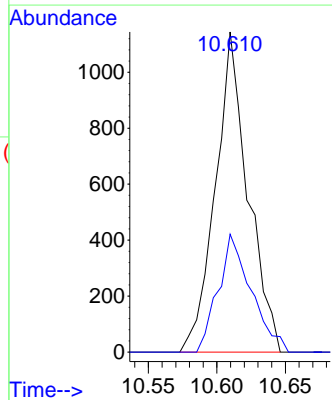
Manual Integrations
APPROVED
 MMDadoda
 10/4/2021 3:16:39 PM

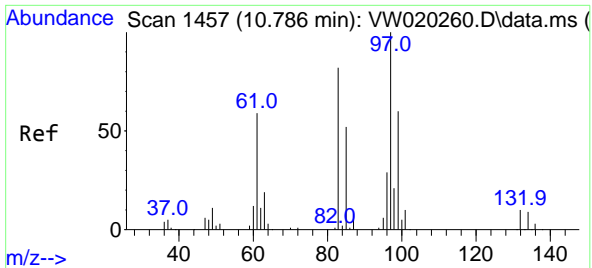


#44
 trans-1,3-Dichloropropene
 Concen: 15.972 ug/L
 RT: 10.610 min Scan# 1428
 Delta R.T. 0.006 min
 Lab File: VW020277.D
 Acq: 30 Sep 2021 18:05



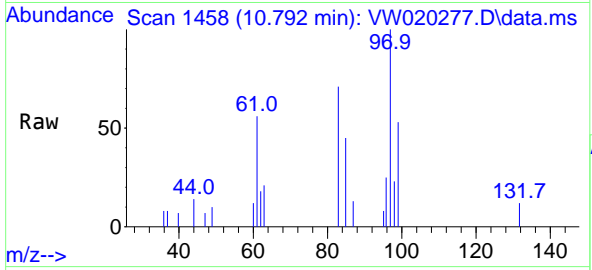
Tgt Ion: 75 Resp: 1888
 Ion Ratio Lower Upper
 75 100
 77 36.8 22.0 40.8





#45
 1,1,2-Trichloroethane
 Concen: 24.547 ug/L
 RT: 10.792 min Scan# 1458
 Delta R.T. 0.006 min
 Lab File: VW020277.D
 Acq: 30 Sep 2021 18:05

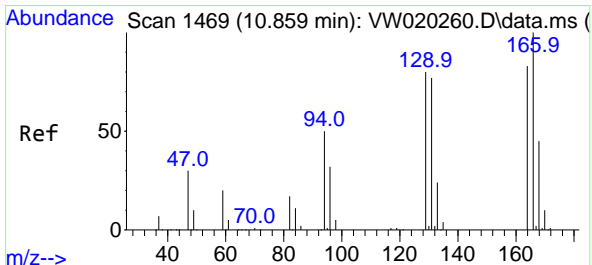
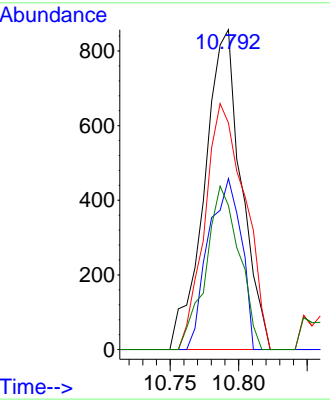
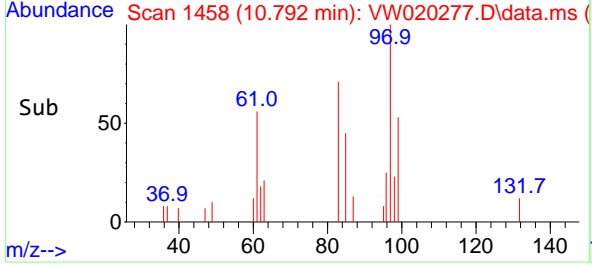
Instrument :
 MSVOA_W
ClientSampled :
 EW8Y9MSD



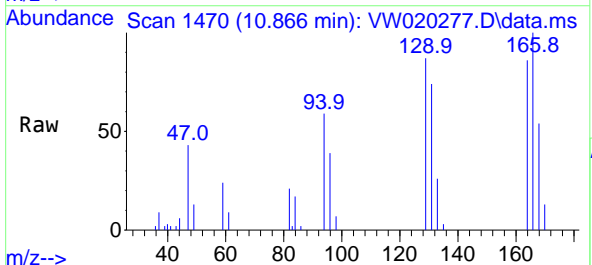
Tgt Ion: 97 Resp: 1606

Ion	Ratio	Lower	Upper
97	100		
99	53.4	42.0	78.0
83	70.8	58.7	108.9
85	45.0	38.1	70.7

Manual Integrations
APPROVED
 MMDadoda
 10/4/2021 3:16:39 PM

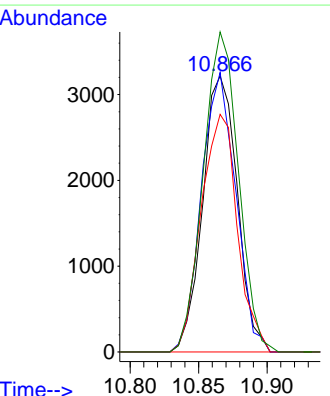
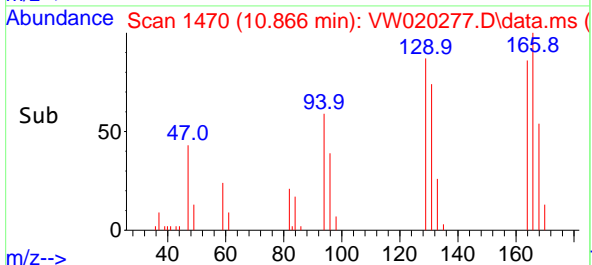


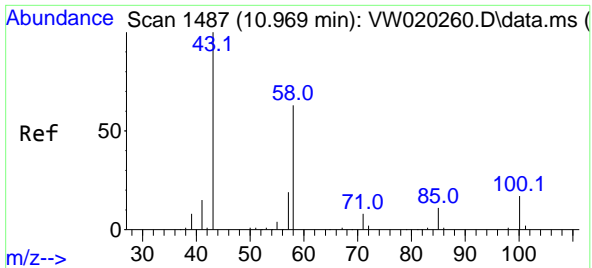
#46
 Tetrachloroethene
 Concen: 75.815 ug/L
 RT: 10.866 min Scan# 1470
 Delta R.T. 0.006 min
 Lab File: VW020277.D
 Acq: 30 Sep 2021 18:05



Tgt Ion: 164 Resp: 5651

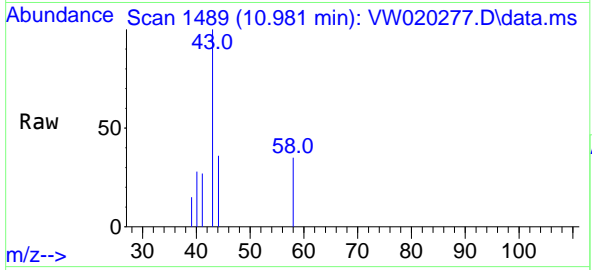
Ion	Ratio	Lower	Upper
164	100		
129	101.3	69.5	129.1
131	86.0	66.5	123.5
166	115.9	89.1	165.5





#48
 2-Hexanone
 Concen: 21.212 ug/L
 RT: 10.981 min Scan# 1489
 Delta R.T. 0.012 min
 Lab File: VW020277.D
 Acq: 30 Sep 2021 18:05

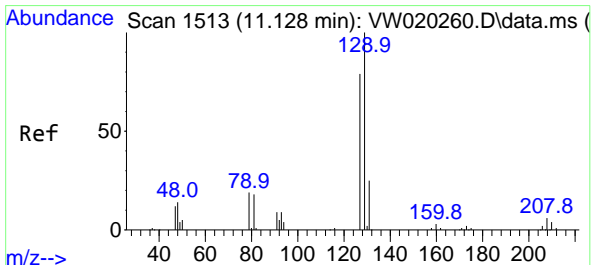
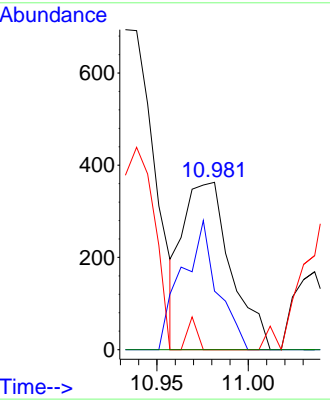
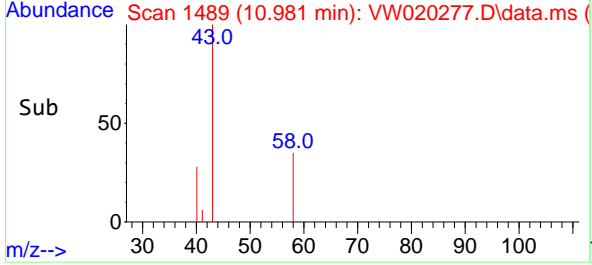
Instrument :
 MSVOA_W
ClientSampled :
 EW8Y9MSD



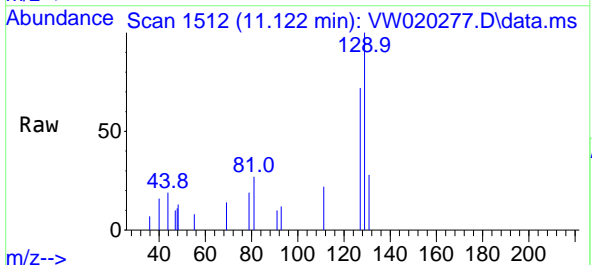
Tgt Ion: 43 Resp: 664

Ion	Ratio	Lower	Upper
43	100		
58	56.9	43.8	65.6
57	2.9	15.6	23.4#
100	0.0	10.5	15.7#

Manual Integrations
APPROVED
 MMDadoda
 10/4/2021 3:16:39 PM

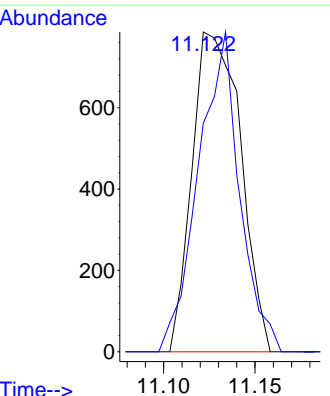
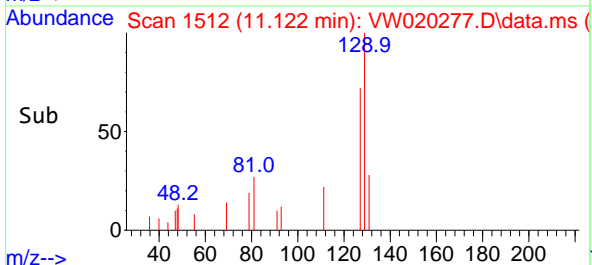


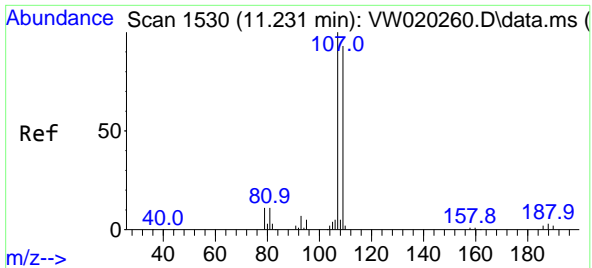
#49
 Dibromochloromethane
 Concen: 18.954 ug/L
 RT: 11.122 min Scan# 1512
 Delta R.T. -0.006 min
 Lab File: VW020277.D
 Acq: 30 Sep 2021 18:05



Tgt Ion: 129 Resp: 1449

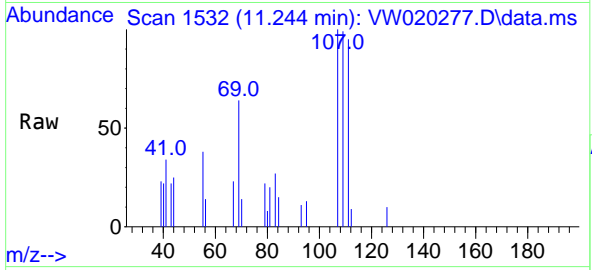
Ion	Ratio	Lower	Upper
129	100		
127	71.5	57.0	105.8





#50
 1,2-Dibromoethane
 Concen: 18.499 ug/L
 RT: 11.244 min Scan# 1532
 Delta R.T. 0.012 min
 Lab File: VW020277.D
 Acq: 30 Sep 2021 18:05

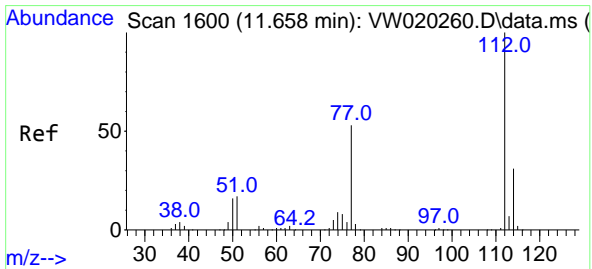
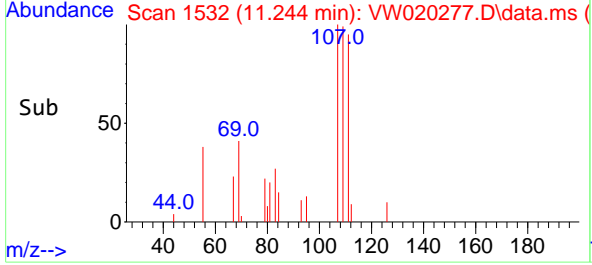
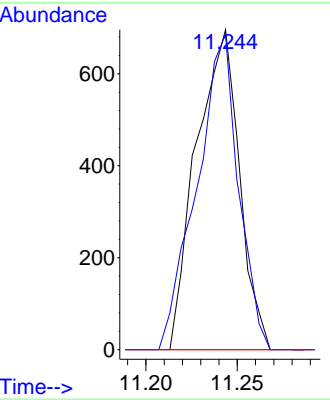
Instrument :
 MSVOA_W
ClientSampled :
 EW8Y9MSD



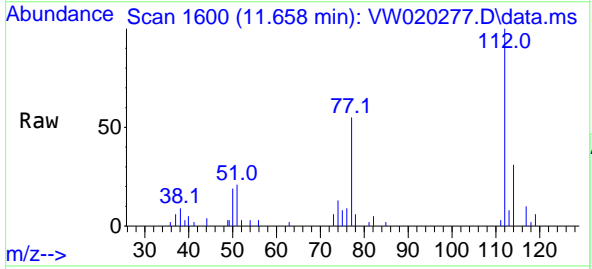
Tgt Ion:107 Resp: 1139

Ion	Ratio	Lower	Upper
107	100		
109	98.6	64.1	119.1
188	0.0	3.0	4.4#

Manual Integrations
APPROVED
 MMDadoda
 10/4/2021 3:16:39 PM

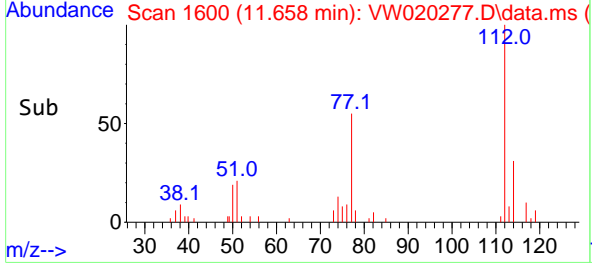
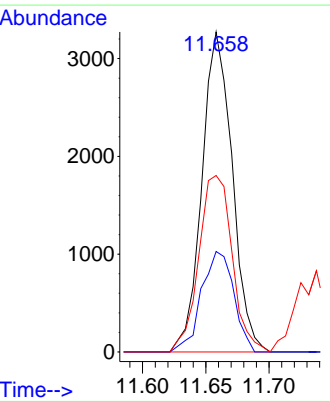


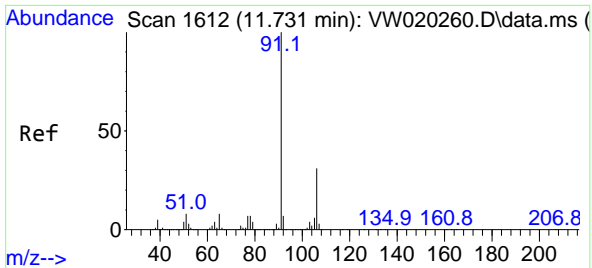
#51
 Chlorobenzene
 Concen: 21.927 ug/L
 RT: 11.658 min Scan# 1600
 Delta R.T. 0.000 min
 Lab File: VW020277.D
 Acq: 30 Sep 2021 18:05



Tgt Ion:112 Resp: 5458

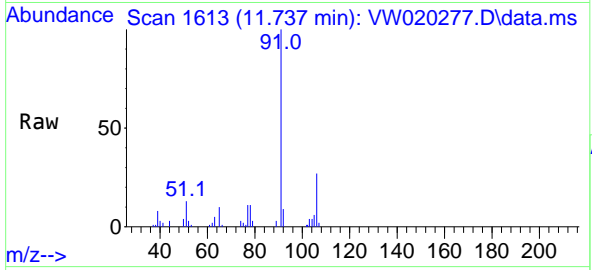
Ion	Ratio	Lower	Upper
112	100		
114	31.4	21.9	40.7
77	55.1	48.0	72.0





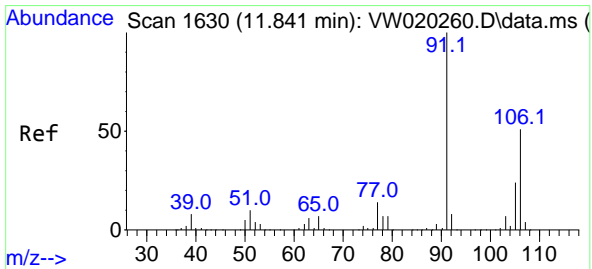
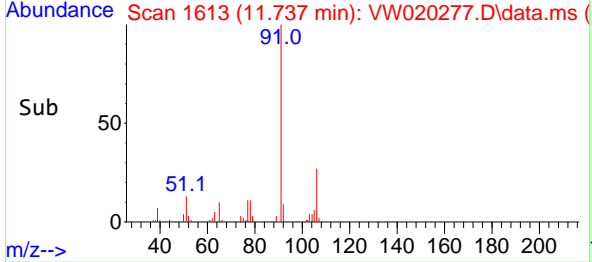
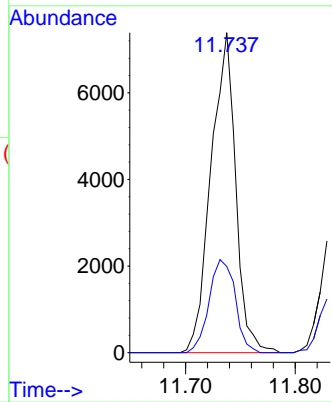
#52
 Ethylbenzene
 Concen: 27.466 ug/L
 RT: 11.737 min Scan# 1613
 Delta R.T. 0.006 min
 Lab File: VW020277.D
 Acq: 30 Sep 2021 18:05

Instrument :
 MSVOA_W
ClientSampled :
 EW8Y9MSD

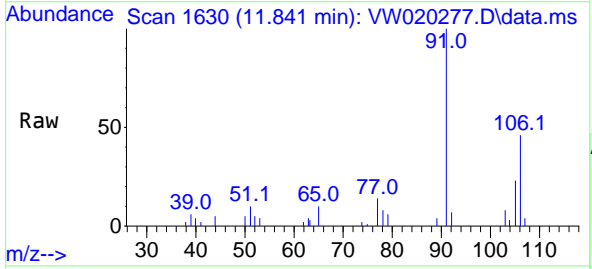


Tgt Ion: 91 Resp: 11578
 Ion Ratio Lower Upper
 91 100
 106 27.0 22.0 40.8

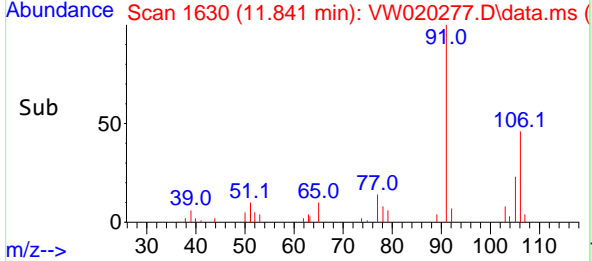
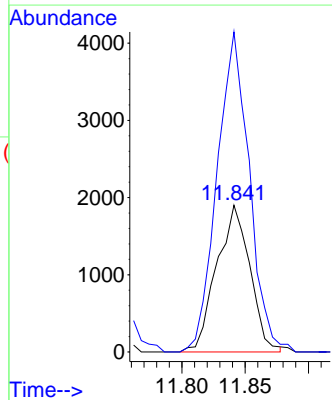
Manual Integrations
APPROVED
 MMDadoda
 10/4/2021 3:16:39 PM

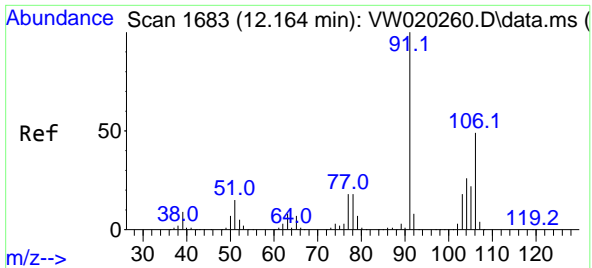


#53
 m,p-Xylene
 Concen: 21.667 ug/L
 RT: 11.841 min Scan# 1630
 Delta R.T. 0.000 min
 Lab File: VW020277.D
 Acq: 30 Sep 2021 18:05



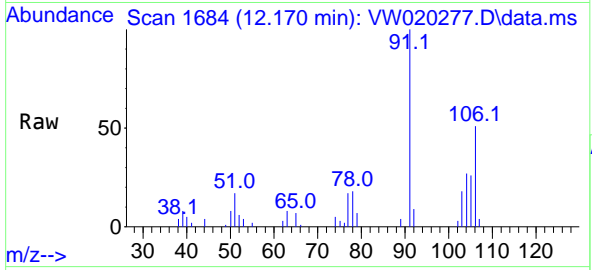
Tgt Ion: 106 Resp: 3482
 Ion Ratio Lower Upper
 106 100
 91 218.0 146.4 271.8





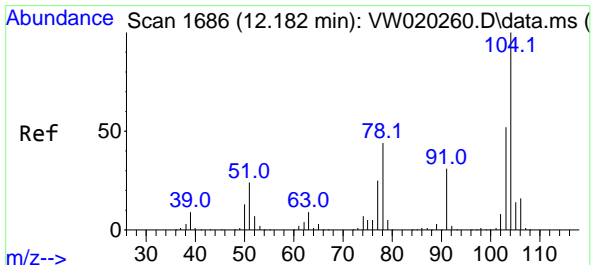
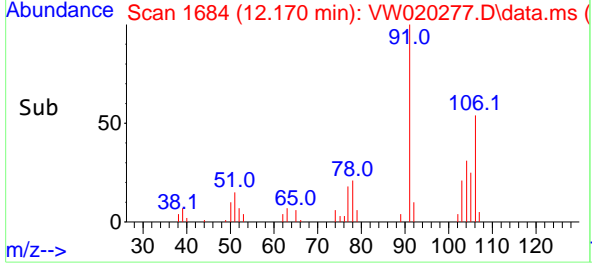
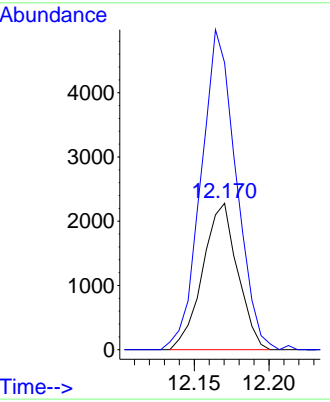
#54
 o-Xylene
 Concen: 24.848 ug/L
 RT: 12.170 min Scan# 1684
 Delta R.T. 0.006 min
 Lab File: VW020277.D
 Acq: 30 Sep 2021 18:05

Instrument :
 MSVOA_W
ClientSampled :
 EW8Y9MSD

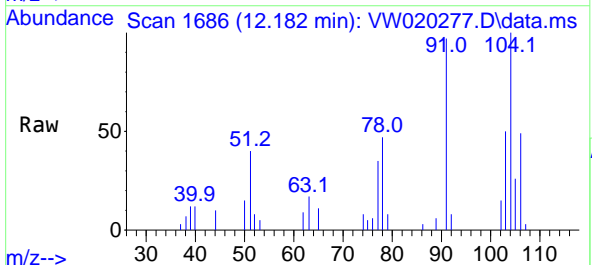


Tgt Ion:106 Resp: 3694
 Ion Ratio Lower Upper
 106 100
 91 196.0 154.3 286.7

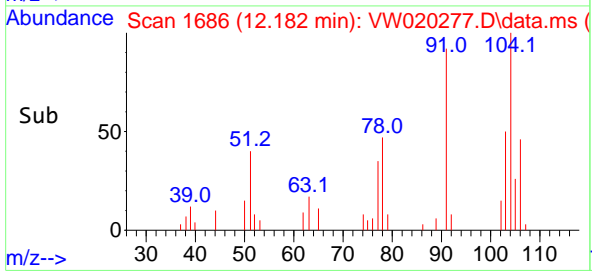
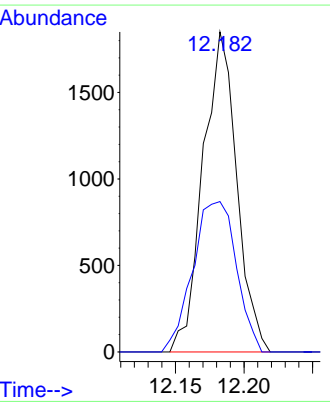
Manual Integrations
APPROVED
 MMDadoda
 10/4/2021 3:16:39 PM

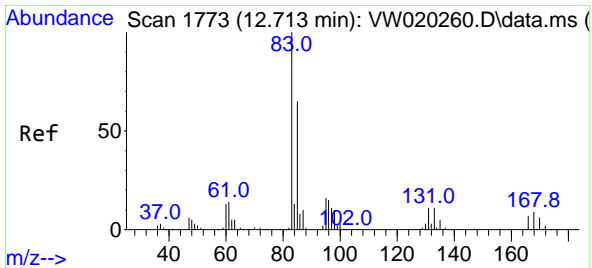


#55
 Styrene
 Concen: 12.260 ug/L
 RT: 12.182 min Scan# 1686
 Delta R.T. 0.000 min
 Lab File: VW020277.D
 Acq: 30 Sep 2021 18:05



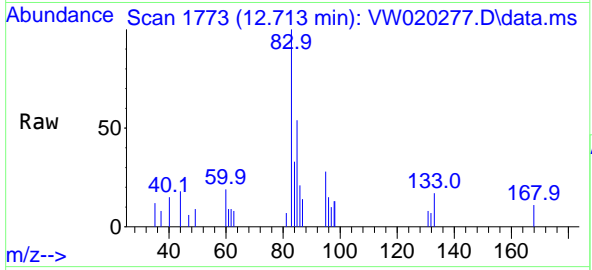
Tgt Ion:104 Resp: 3167
 Ion Ratio Lower Upper
 104 100
 78 47.0 32.7 60.7





#57
 1,1,2-Tetrachloroethane
 Concen: 16.597 ug/L
 RT: 12.713 min Scan# 1773
 Delta R.T. 0.000 min
 Lab File: VW020277.D
 Acq: 30 Sep 2021 18:05

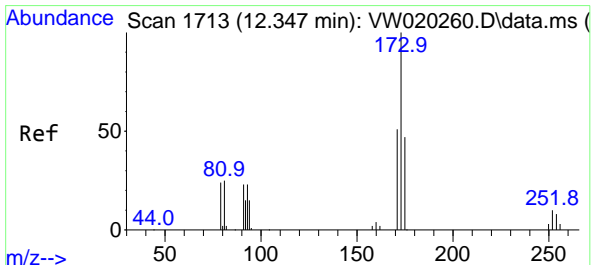
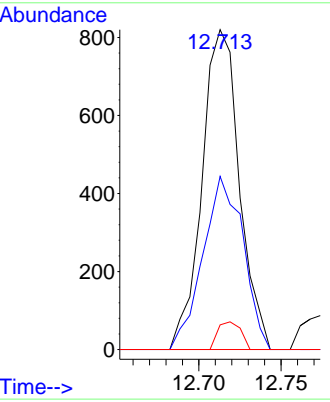
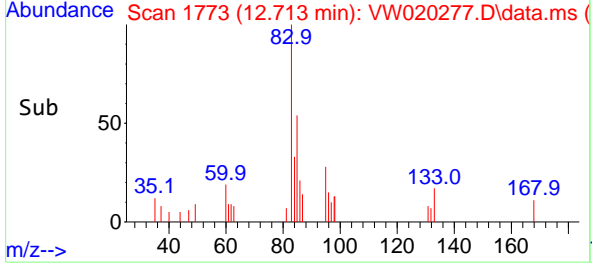
Instrument :
 MSVOA_W
ClientSampled :
 EW8Y9MSD



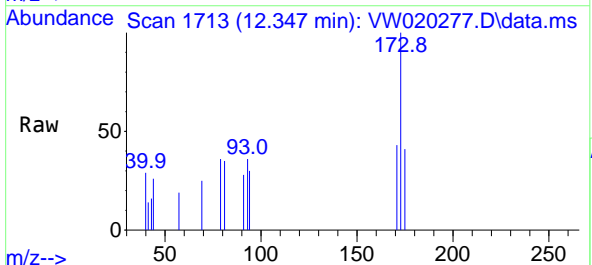
Tgt Ion: 83 Resp: 1297

Ion	Ratio	Lower	Upper
83	100		
85	54.1	43.3	80.5
131	7.7	7.9	11.9#

Manual Integrations
APPROVED
 MMDadoda
 10/4/2021 3:16:39 PM

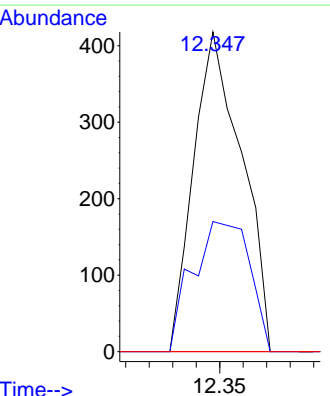
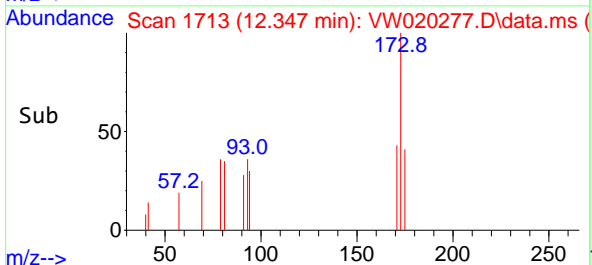


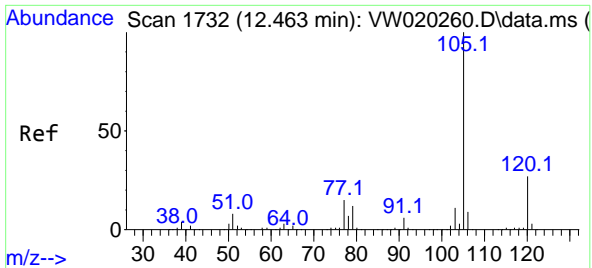
#59
 Bromoform
 Concen: 51.855 ug/L
 RT: 12.347 min Scan# 1713
 Delta R.T. 0.000 min
 Lab File: VW020277.D
 Acq: 30 Sep 2021 18:05



Tgt Ion: 173 Resp: 596

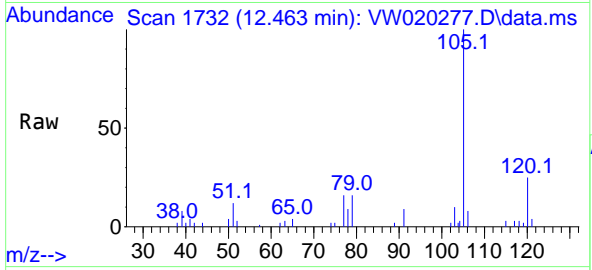
Ion	Ratio	Lower	Upper
173	100		
175	48.2	39.2	58.8
254	0.0	6.6	10.0#





#60
 Isopropylbenzene
 Concen: 88.613 ug/L
 RT: 12.463 min Scan# 1732
 Delta R.T. 0.000 min
 Lab File: VW020277.D
 Acq: 30 Sep 2021 18:05

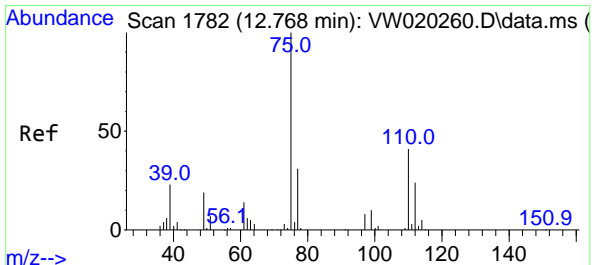
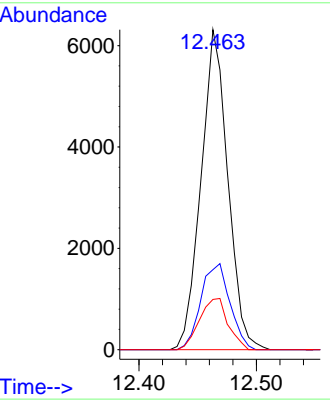
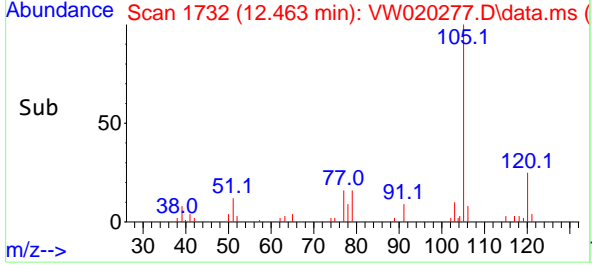
Instrument :
 MSVOA_W
Client Sampled :
 EW8Y9MSD



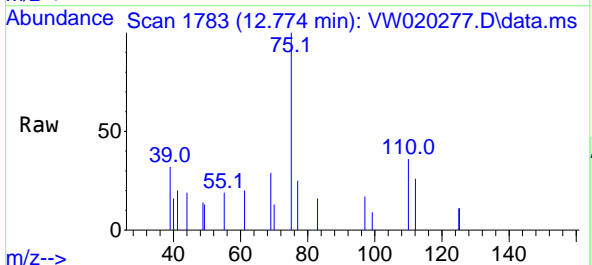
Tgt Ion: 105 Resp: 10016

Ion	Ratio	Lower	Upper
105	100		
120	29.1	20.9	31.3
77	17.1	13.3	19.9

Manual Integrations
APPROVED
 MMDadoda
 10/4/2021 3:16:39 PM

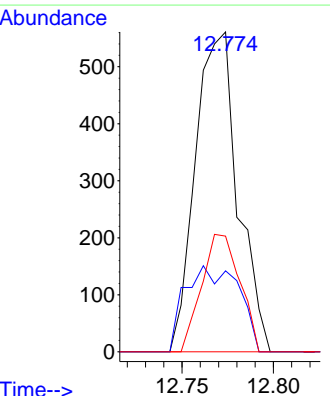
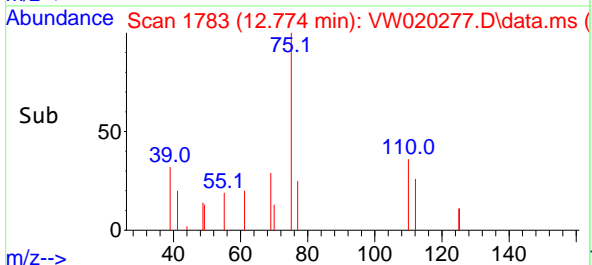


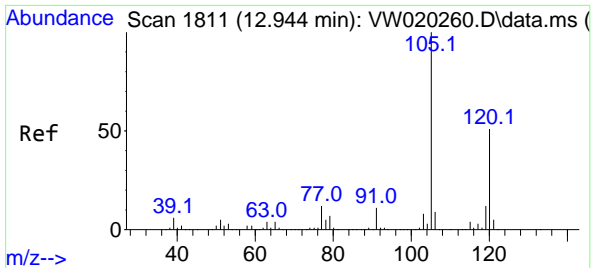
#61
 1,2,3-Trichloropropane
 Concen: 56.917 ug/L
 RT: 12.774 min Scan# 1783
 Delta R.T. 0.006 min
 Lab File: VW020277.D
 Acq: 30 Sep 2021 18:05



Tgt Ion: 75 Resp: 906

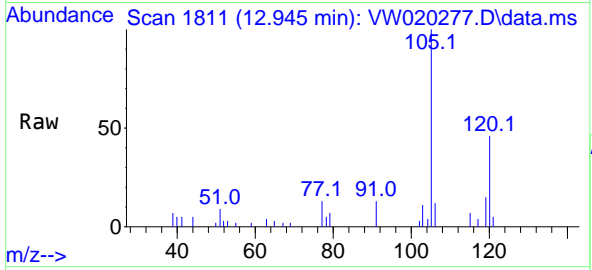
Ion	Ratio	Lower	Upper
75	100		
77	20.0	26.3	39.5#
110	33.1	30.2	45.2





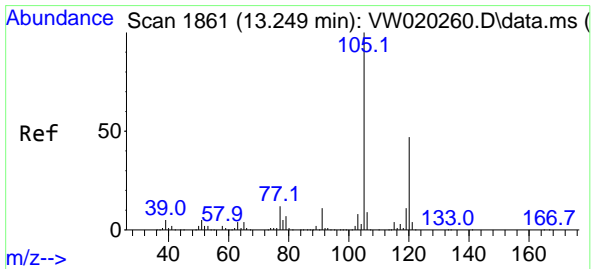
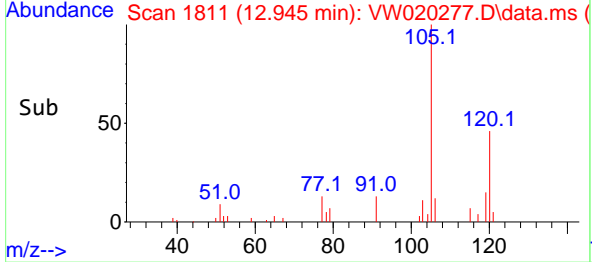
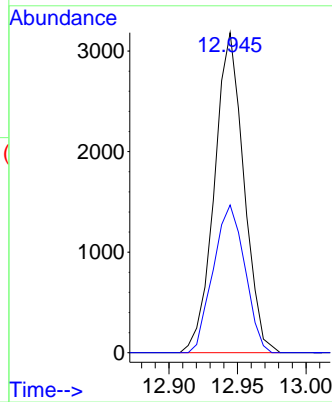
#62
 1,3,5-Trimethylbenzene
 Concen: 51.227 ug/L
 RT: 12.945 min Scan# 1811
 Delta R.T. 0.000 min
 Lab File: VW020277.D
 Acq: 30 Sep 2021 18:05

Instrument :
 MSVOA_W
ClientSampled :
 EW8Y9MSD

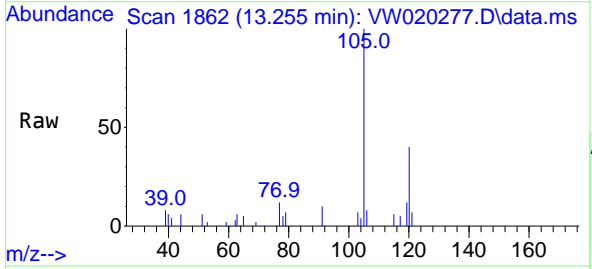


Tgt Ion:105 Resp: 4752
 Ion Ratio Lower Upper
 105 100
 120 49.6 38.0 57.0

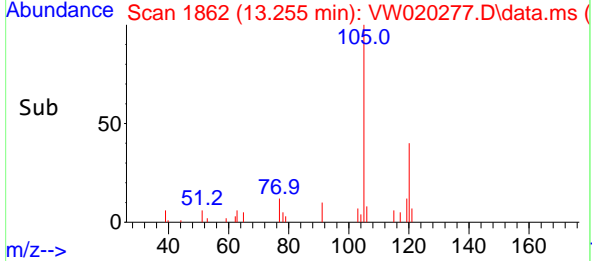
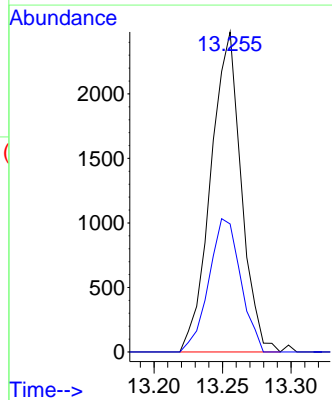
Manual Integrations
APPROVED
 MMDadoda
 10/4/2021 3:16:39 PM

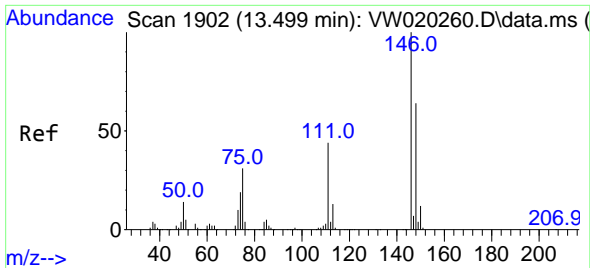


#63
 1,2,4-Trimethylbenzene
 Concen: 42.129 ug/L
 RT: 13.255 min Scan# 1862
 Delta R.T. 0.006 min
 Lab File: VW020277.D
 Acq: 30 Sep 2021 18:05



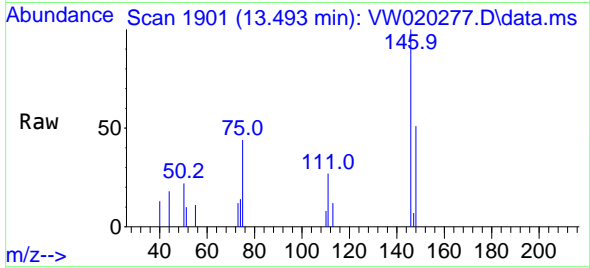
Tgt Ion:105 Resp: 3839
 Ion Ratio Lower Upper
 105 100
 120 43.5 36.2 54.4





#64
 1,3-Dichlorobenzene
 Concen: 22.841 ug/L
 RT: 13.493 min Scan# 1901
 Delta R.T. -0.006 min
 Lab File: VW020277.D
 Acq: 30 Sep 2021 18:05

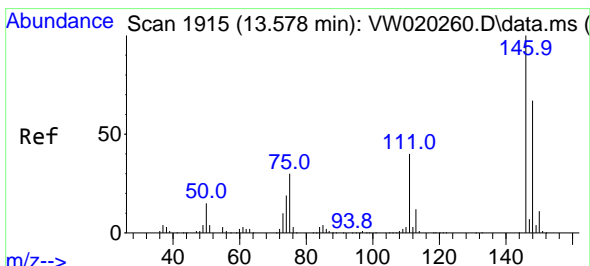
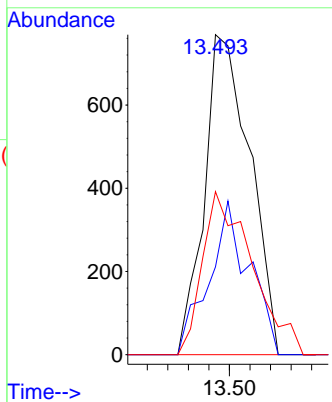
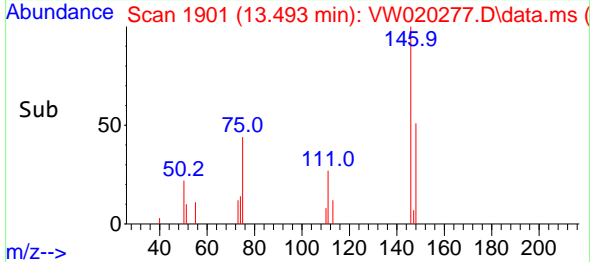
Instrument :
 MSVOA_W
 ClientSampled :
 EW8Y9MSD



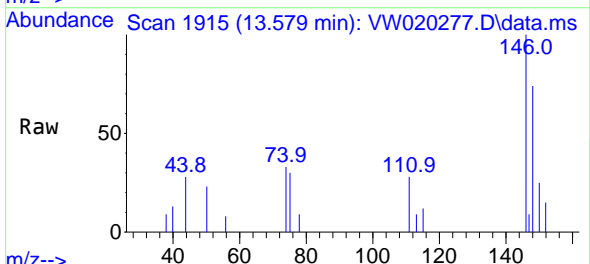
Tgt Ion:146 Resp: 1184
 Ion Ratio Lower Upper
 146 100
 111 27.4 28.3 52.5#
 148 51.0 44.4 82.4

Manual Integrations
 APPROVED

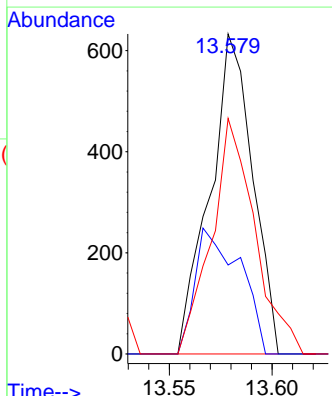
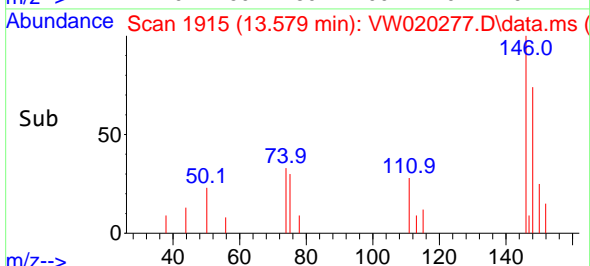
MMDadoda
 10/4/2021 3:16:39 PM

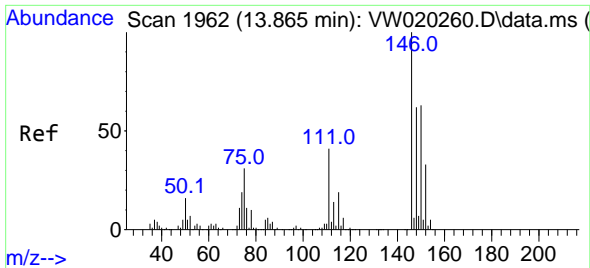


#65
 1,4-Dichlorobenzene
 Concen: 17.081 ug/L
 RT: 13.579 min Scan# 1915
 Delta R.T. 0.000 min
 Lab File: VW020277.D
 Acq: 30 Sep 2021 18:05



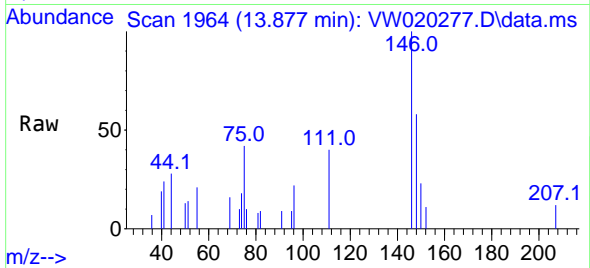
Tgt Ion:146 Resp: 915
 Ion Ratio Lower Upper
 146 100
 111 27.8 29.6 55.0#
 148 73.6 45.3 84.1





#67
 1,2-Dichlorobenzene
 Concen: 25.863 ug/L
 RT: 13.877 min Scan# 1964
 Delta R.T. 0.012 min
 Lab File: VW020277.D
 Acq: 30 Sep 2021 18:05

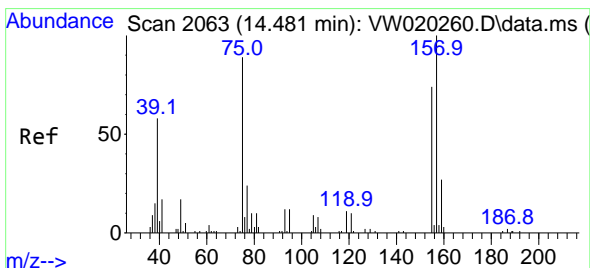
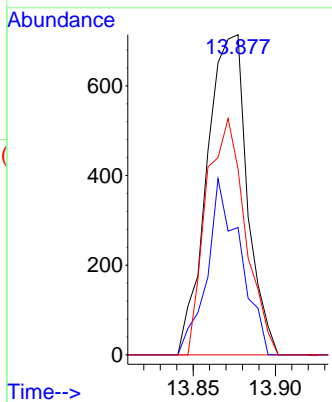
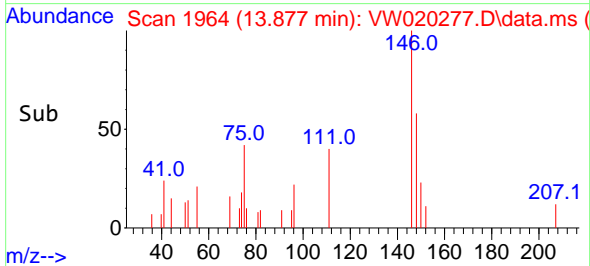
Instrument :
 MSVOA_W
 ClientSampled :
 EW8Y9MSD



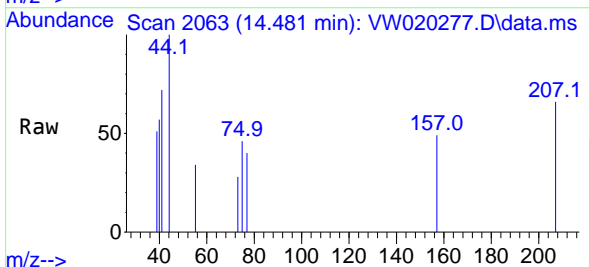
Tgt Ion:146 Resp: 1221
 Ion Ratio Lower Upper
 146 100
 111 39.8 34.7 52.1
 148 58.1 50.2 75.4

Manual Integrations
 APPROVED

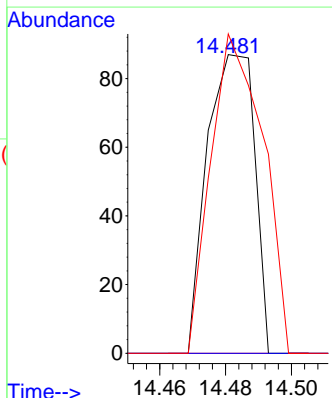
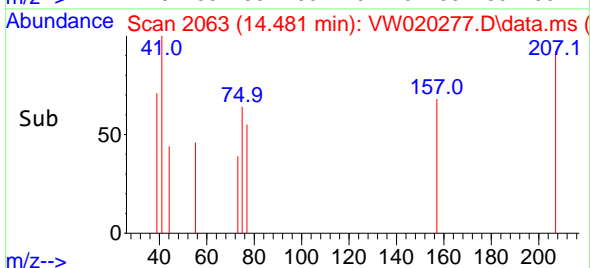
MMDadoda
 10/4/2021 3:16:39 PM

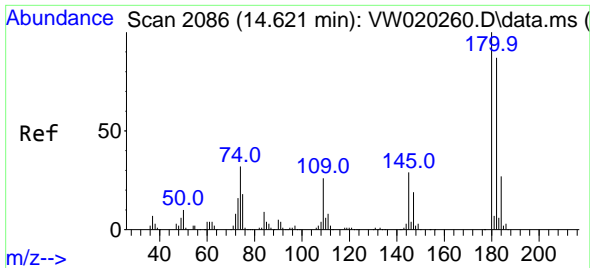


#68
 1,2-Dibromo-3-chloropropane
 Concen: 24.348 ug/L m
 RT: 14.481 min Scan# 2063
 Delta R.T. 0.000 min
 Lab File: VW020277.D
 Acq: 30 Sep 2021 18:05



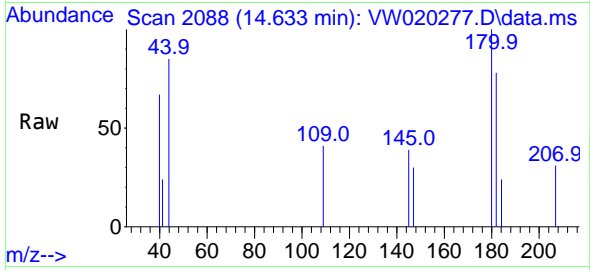
Tgt Ion: 75 Resp: 87
 Ion Ratio Lower Upper
 75 100
 155 0.0 58.5 87.7#
 157 106.9 77.4 116.0





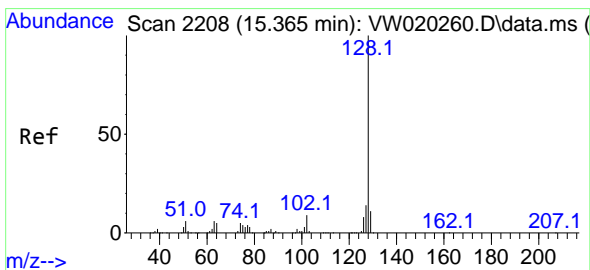
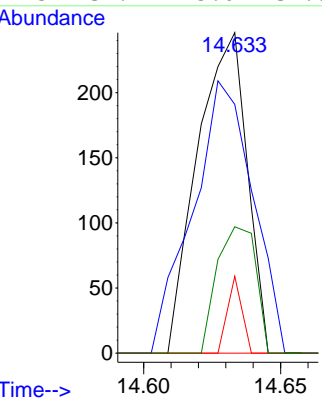
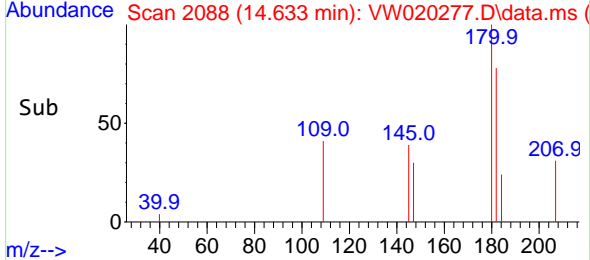
#69
 1,3,5-Trichlorobenzene
 Concen: 8.618 ug/L
 RT: 14.633 min Scan# 2088
 Delta R.T. 0.012 min
 Lab File: VW020277.D
 Acq: 30 Sep 2021 18:05

Instrument :
 MSVOA_W
ClientSampled :
 EW8Y9MSD

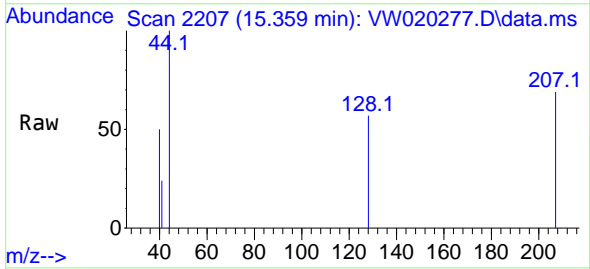


Tgt Ion:180 Resp: 309
 Ion Ratio Lower Upper
 180 100
 182 103.2 75.2 112.8
 184 0.0 24.3 36.5#
 145 31.1 25.0 37.6

Manual Integrations
APPROVED
 MMDadoda
 10/4/2021 3:16:39 PM



#71
 Naphthalene
 Concen: 3.770 ug/L
 RT: 15.359 min Scan# 2207
 Delta R.T. -0.006 min
 Lab File: VW020277.D
 Acq: 30 Sep 2021 18:05



Tgt Ion:128 Resp: 184
 Ion Ratio Lower Upper
 128 100
 127 0.0 10.3 15.5#
 129 0.0 8.6 12.8#

