

Data Path : Z:\voasrv\HPCHEM1\MSVOA\_W\Data\VW093022\  
 Data File : VW024697.D  
 Acq On : 30 Sep 2022 17:02  
 Operator : SY/VA  
 Sample : N4858-11  
 Misc : 5.42g/10mL/MSVOA\_W/SOIL  
 ALS Vial : 6 Sample Multiplier: 1

Instrument :  
 MSVOA\_W  
 ClientSampleId :  
 BGSF2

Quant Time: Sep 30 22:15:00 2022  
 Quant Method : Z:\voasrv\HPCHEM1\MSVOA\_W\Method\SFAMWLM092622SMA.M  
 Quant Title : SFAM01.0  
 QLast Update : Fri Sep 30 22:12:13 2022  
 Response via : Initial Calibration

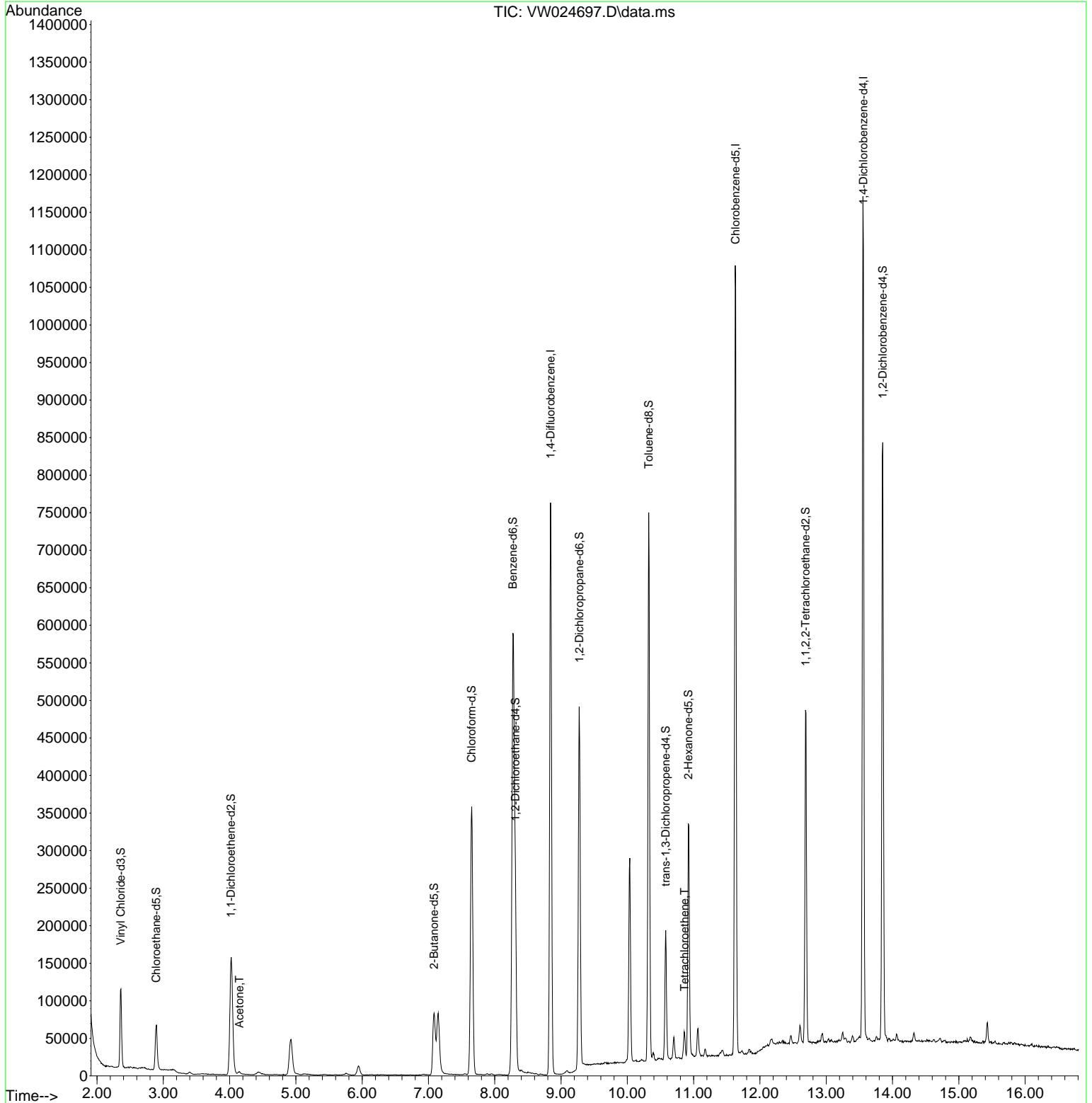
Compound	R.T.	QIon	Response	Conc	Units	Dev(Min)
Internal Standards						
1) 1,4-Difluorobenzene	8.841	114	623425	25.000	ug/L	0.00
28) Chlorobenzene-d5	11.634	117	583332	25.000	ug/L	0.00
58) 1,4-Dichlorobenzene-d4	13.560	152	282003	25.000	ug/L	0.00
System Monitoring Compounds						
4) Vinyl Chloride-d3	2.361	65	104493	16.020	ug/L	0.00
Spiked Amount	25.000	Range 30 - 150	Recovery =	64.080%		
7) Chloroethane-d5	2.891	69	70223	18.527	ug/L	0.00
Spiked Amount	25.000	Range 30 - 150	Recovery =	74.120%		
11) 1,1-Dichloroethene-d2	4.019	63	156134	10.342	ug/L	0.00
Spiked Amount	25.000	Range 45 - 110	Recovery =	41.360%#		
21) 2-Butanone-d5	7.086	46	150685	64.256	ug/L	0.01
Spiked Amount	50.000	Range 20 - 135	Recovery =	128.520%		
24) Chloroform-d	7.653	84	367836	22.070	ug/L	0.00
Spiked Amount	25.000	Range 40 - 150	Recovery =	88.280%		
26) 1,2-Dichloroethane-d4	8.311	65	200176	23.153	ug/L	0.00
Spiked Amount	25.000	Range 70 - 130	Recovery =	92.600%		
32) Benzene-d6	8.275	84	613140	16.445	ug/L	0.00
Spiked Amount	25.000	Range 20 - 135	Recovery =	65.760%		
36) 1,2-Dichloropropane-d6	9.274	67	235294	20.655	ug/L	0.00
Spiked Amount	25.000	Range 70 - 120	Recovery =	82.600%		
41) Toluene-d8	10.323	98	474529	14.240	ug/L	0.00
Spiked Amount	25.000	Range 30 - 130	Recovery =	56.960%		
43) trans-1,3-Dichloroprop...	10.579	79	97076	19.135	ug/L	0.00
Spiked Amount	25.000	Range 30 - 135	Recovery =	76.560%		
47) 2-Hexanone-d5	10.920	63	115892	59.459	ug/L	0.00
Spiked Amount	50.000	Range 20 - 135	Recovery =	118.920%		
56) 1,1,2,2-Tetrachloroeth...	12.688	84	233380	28.752	ug/L	0.00
Spiked Amount	25.000	Range 45 - 120	Recovery =	115.000%		
66) 1,2-Dichlorobenzene-d4	13.853	152	202001	20.356	ug/L	0.00
Spiked Amount	25.000	Range 75 - 120	Recovery =	81.440%		
Target Compounds						
13) Acetone	4.147	43	6900	4.033	ug/L	99
46) Tetrachloroethene	10.866	164	6740	0.959	ug/L #	87

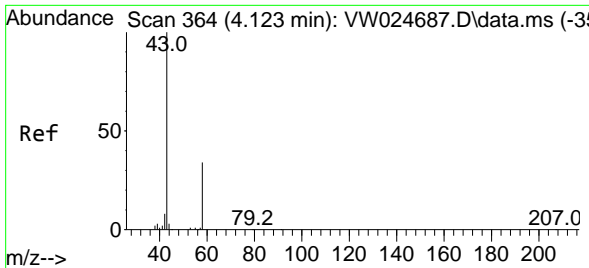
(#) = qualifier out of range (m) = manual integration (+) = signals summed

Data Path : Z:\voasrv\HPCHEM1\MSVOA\_W\Data\VW093022\  
 Data File : VW024697.D  
 Acq On : 30 Sep 2022 17:02  
 Operator : SY/VA  
 Sample : N4858-11  
 Misc : 5.42g/10mL/MSVOA\_W/SOIL  
 ALS Vial : 6 Sample Multiplier: 1

**Instrument :**  
 MSVOA\_W  
**ClientSampleId :**  
 BGSF2

Quant Time: Sep 30 22:15:00 2022  
 Quant Method : Z:\voasrv\HPCHEM1\MSVOA\_W\Method\SFAMWLM092622SMA.M  
 Quant Title : SFAM01.0  
 QLast Update : Fri Sep 30 22:12:13 2022  
 Response via : Initial Calibration

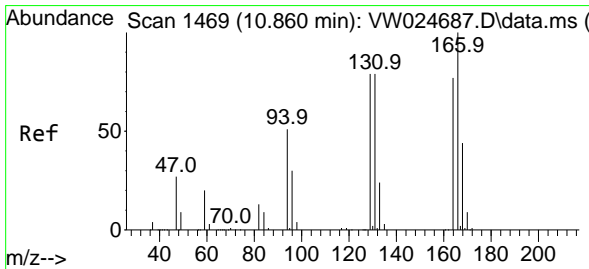
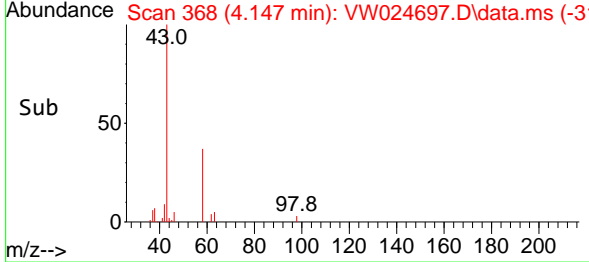
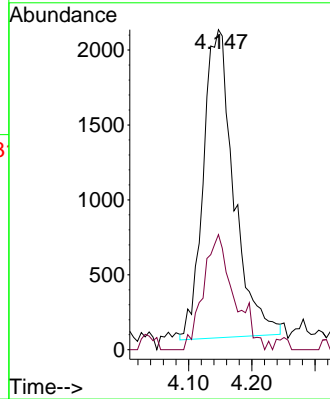
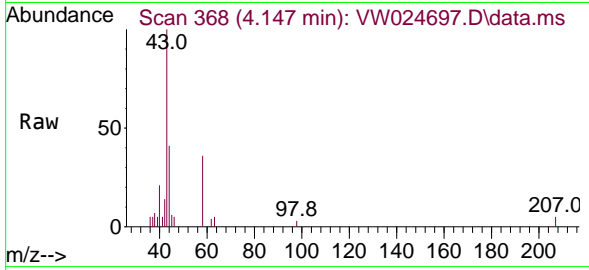




#13  
 Acetone  
 Concen: 4.033 ug/L  
 RT: 4.147 min Scan# 30  
 Delta R.T. 0.024 min  
 Lab File: VW024697.D  
 Acq: 30 Sep 2022 17:02

Instrument : MSVOA\_W  
 ClientSampleId : BGSF2

Tgt Ion:	43	58	Resp:	6900
Ion Ratio	100	34.5	Lower	Upper
			0.0	67.6



#46  
 Tetrachloroethene  
 Concen: 0.959 ug/L  
 RT: 10.866 min Scan# 1470  
 Delta R.T. 0.006 min  
 Lab File: VW024697.D  
 Acq: 30 Sep 2022 17:02

Tgt Ion:	164	129	131	166	Resp:	6740
Ion Ratio	100	111.3	101.8	143.8	Lower	Upper
		74.1	71.5	76.3		137.5
						132.7
						141.7#

