

Data Path : Z:\VOASRV\HPCHEM1\MSVOA W\DATA\VW100118\
 Data File : VW005760.D
 Acq On : 02 Oct 2018 03:14
 Operator : SY/AP
 Sample : J5181-07
 Misc : 3.51G/10ML/MSVOA W/SOIL
 ALS Vial : 1 Sample Multiplier: 1

Instrument :
 MSVOA_W
 ClientSampleId :
 JLC36

Quant Time: Oct 02 08:01:32 2018
 Quant Method : Z:\VOASRV\HPCHEM1\MSVOA_W\METHOD\SOM2WLM092818S.M
 Quant Title : VOC Analysis
 QLast Update : Tue Oct 02 07:19:35 2018
 Response via : Initial Calibration

Internal Standards	R.T.	QIon	Response	Conc	Units	Dev(Min)
1) 1,4-Difluorobenzene	8.85	114	215406	25.00	ug/L	0.00
28) Chlorobenzene-d5	11.63	117	222769	25.00	ug/L	0.00
60) 1,4-Dichlorobenzene-d4	13.57	152	104935	25.00	ug/L	0.00

System Monitoring Compounds

4) Vinyl Chloride-d3	2.35	65	35173	12.81	ug/L	0.00
Spiked Amount	25.000	Range	30 - 150	Recovery	=	51.24%
7) Chloroethane-d5	2.89	69	32377	15.11	ug/L	0.00
Spiked Amount	25.000	Range	30 - 150	Recovery	=	60.44%
10) 1,1-Dichloroethene-d2	4.01	63	65176	10.87	ug/L	-0.01
Spiked Amount	25.000	Range	45 - 110	Recovery	=	43.48%#
20) 2-Butanone-d5	7.09	46	41956	47.59	ug/L	0.00
Spiked Amount	50.000	Range	20 - 135	Recovery	=	95.18%
24) Chloroform-d	7.65	84	122554	22.15	ug/L	0.00
Spiked Amount	25.000	Range	40 - 150	Recovery	=	88.60%
26) 1,2-Dichloroethane-d4	8.31	65	79053	23.59	ug/L	0.00
Spiked Amount	25.000	Range	70 - 130	Recovery	=	94.36%
29) Benzene-d6	8.28	84	210526	19.09	ug/L	0.00
Spiked Amount	25.000	Range	20 - 135	Recovery	=	76.36%
33) 1,2-Dichloropropane-d6	9.28	67	73790	23.15	ug/L	0.00
Spiked Amount	25.000	Range	70 - 120	Recovery	=	92.60%
37) Toluene-d8	10.33	98	186973	17.17	ug/L	0.00
Spiked Amount	25.000	Range	30 - 130	Recovery	=	68.68%
38) trans-1,3-Dichloropropene-	10.59	79	31665	18.92	ug/L	0.00
Spiked Amount	25.000	Range	30 - 135	Recovery	=	75.68%
39) 2-Hexanone-d5	10.93	63	30528	40.90	ug/L	0.00
Spiked Amount	50.000	Range	20 - 135	Recovery	=	81.80%
48) 1,1,2,2-Tetrachloroethane-	12.70	84	74275	23.99	ug/L	0.00
Spiked Amount	25.000	Range	45 - 120	Recovery	=	95.96%
61) 1,2-Dichlorobenzene-d4	13.86	152	86914	23.41	ug/L	0.00
Spiked Amount	25.000	Range	75 - 120	Recovery	=	93.64%

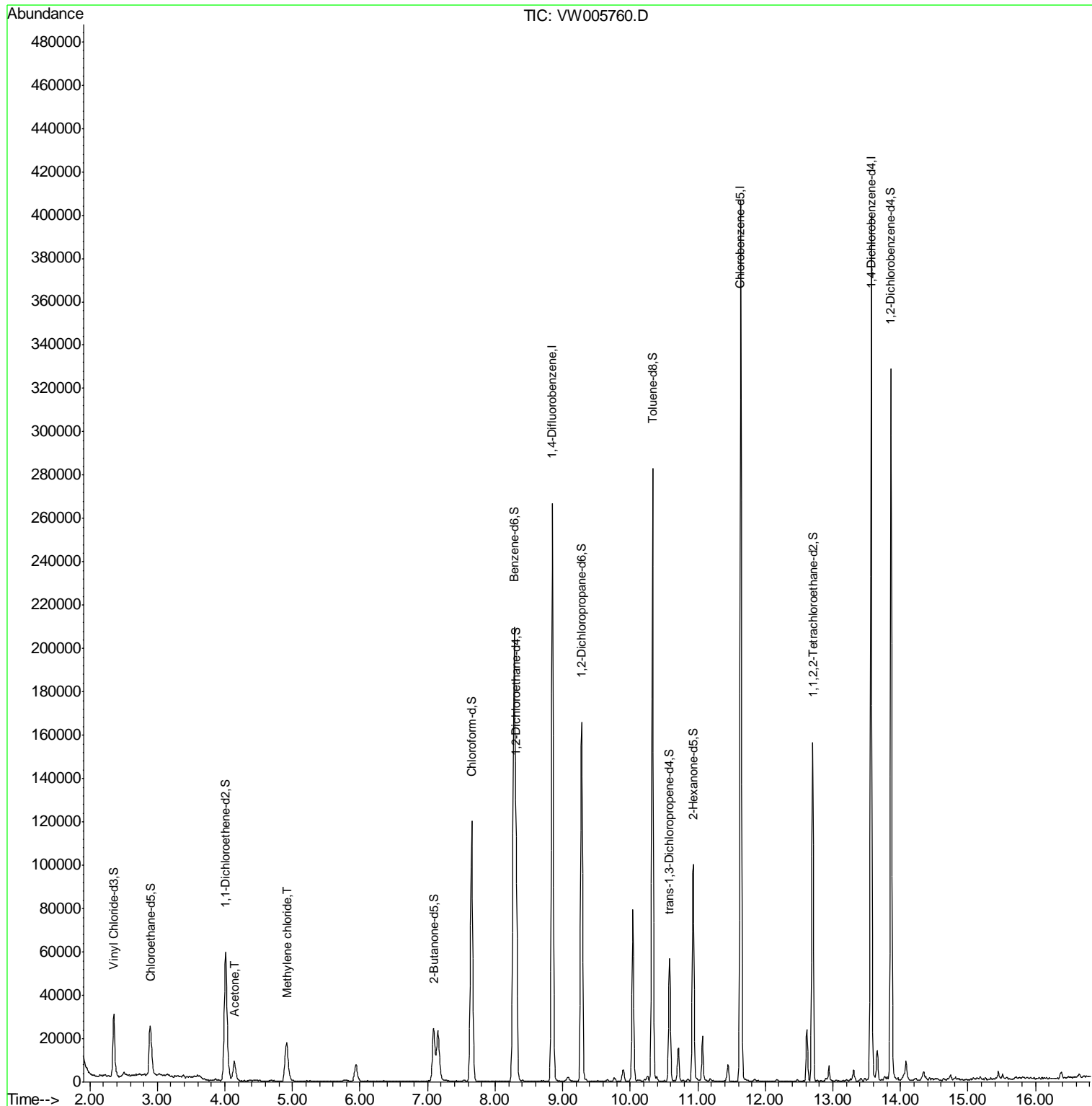
Target Compounds					Ovalue
13) Acetone	4.14	43	15128	16.479 ug/L	69
16) Methylene chloride	4.92	84	14703	4.140 ug/L	94

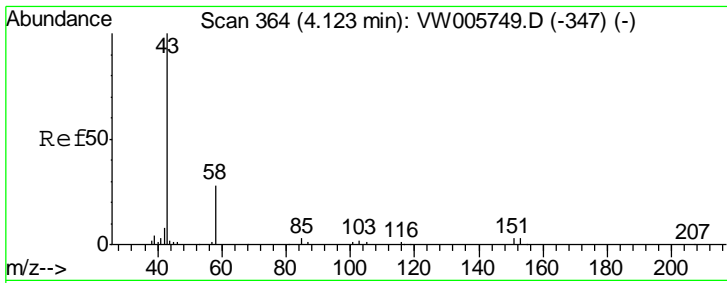
(#) = qualifier out of range (m) = manual integration (+) = signals summed

Data Path : Z:\VOASRV\HPCHEM1\MSVOA W\DATA\VW100118\
 Data File : VW005760.D
 Acq On : 02 Oct 2018 03:14
 Operator : SY/AP
 Sample : J5181-07
 Misc : 3.51G/10ML/MSVOA W/SOIL
 ALS Vial : 1 Sample Multiplier: 1

Instrument :
 MSVOA_W
 ClientSampled :
 JLC36

Quant Time: Oct 02 08:01:32 2018
 Quant Method : Z:\VOASRV\HPCHEM1\MSVOA_W\METHOD\SOM2WLM092818S.M
 Quant Title : VOC Analysis
 QLast Update : Tue Oct 02 07:19:35 2018
 Response via : Initial Calibration

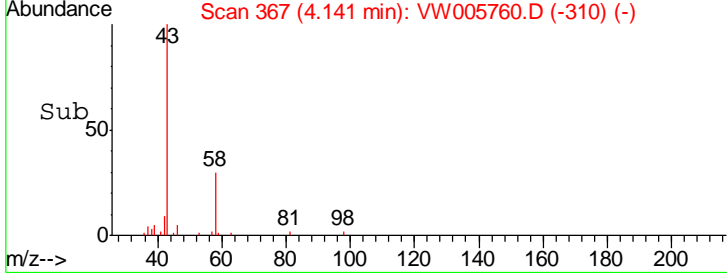
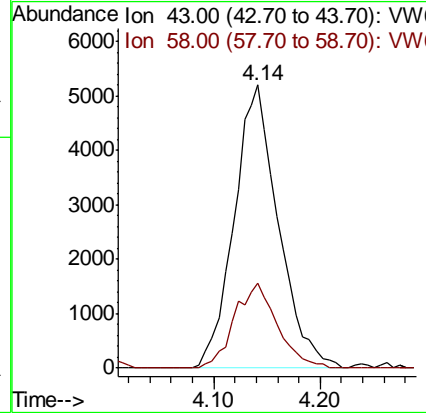
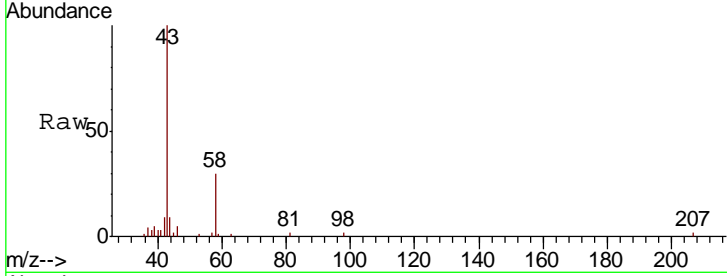




#13
 Acetone
 Concen: 16.479 ug/L
 RT: 4.14 min Scan# 367
 Delta R.T. 0.02 min
 Lab File: VW005760.D
 Acq: 02 Oct 2018 03:14

Instrument :
 MSVOA_W
 ClientSampled :
 JLC36

Tgt Ion	Resp	Lower	Upper
43	15128		
58	29.1	0.0	31.8



#16
 Methylene chloride
 Concen: 4.140 ug/L
 RT: 4.92 min Scan# 494
 Delta R.T. -0.00 min
 Lab File: VW005760.D
 Acq: 02 Oct 2018 03:14

Tgt Ion	Resp	Lower	Upper
84	14703		
49	114.4	87.2	162.0
86	62.3	43.2	80.2

