

Data Path : Z:\VOASRV\HPCHEM1\MSVOA W\DATA\VW100118\  
 Data File : VW005741.D  
 Acq On : 01 Oct 2018 17:45  
 Operator : SY/AP  
 Sample : J5180-10  
 Misc : 5.67G/10ML/MSVOA W/SOIL  
 ALS Vial : 1 Sample Multiplier: 1

Instrument :  
 MSVOA\_W  
 ClientSampleId :  
 JLC19

Integration Parameters: LSCINT.P

Integrator: RTE  
 Smoothing : OFF  
 Sampling : 1  
 Start Thrs: 0.2  
 Stop Thrs : 0

Filtering: 5  
 Min Area: 0 % of largest Peak  
 Max Peaks: 100  
 Peak Location: TOP

If leading or trailing edge < 100 prefer < Baseline drop else tangent >  
 Peak separation: 5

Method : Z:\VOASRV\HPCHEM1\MSVOA\_W\METHOD\SOM2WLM092818S.M  
 Title : VOC Analysis

Signal : TIC

peak #	R.T. min	first scan	max scan	last scan	PK TY	peak height	corr. area	corr. % max.	% of total
1	2.361	69	75	85	rVB	35460	82326	10.78%	1.712%
2	2.898	156	163	175	rVB2	28145	72978	9.56%	1.518%
3	3.922	329	331	334	rVB2	450	342	0.04%	0.007%
4	4.013	334	346	361	rBV2	71448	231071	30.27%	4.806%
5	4.416	407	412	413	rBV3	421	684	0.09%	0.014%
6	4.763	467	469	473	rBV3	287	342	0.04%	0.007%
7	4.915	483	494	508	rBV3	13218	50417	6.60%	1.049%
8	5.086	520	522	526	rVB3	221	251	0.03%	0.005%
9	5.135	526	530	533	rBV2	237	476	0.06%	0.010%
10	5.367	566	568	570	rVB2	336	301	0.04%	0.006%
11	5.397	570	573	575	rBV3	315	472	0.06%	0.010%
12	5.488	586	588	591	rBV3	203	219	0.03%	0.005%
13	5.519	591	593	596	rBV	203	280	0.04%	0.006%
14	5.738	624	629	631	rBV3	607	1009	0.13%	0.021%
15	5.934	653	661	672	rVB3	8417	25866	3.39%	0.538%
16	6.104	687	689	692	rVV3	255	263	0.03%	0.005%
17	6.135	692	694	698	rVB3	262	396	0.05%	0.008%
18	6.226	707	709	711	rVB	387	284	0.04%	0.006%
19	6.470	746	749	752	rBV2	160	235	0.03%	0.005%
20	6.848	808	811	812	rBV2	234	208	0.03%	0.004%
21	6.885	815	817	819	rBV	264	208	0.03%	0.004%
22	6.970	828	831	833	rBV3	252	237	0.03%	0.005%
23	7.092	841	851	855	rBV	20704	57268	7.50%	1.191%
24	7.647	932	942	956	rBV	139301	339609	44.49%	7.064%
25	7.866	975	978	980	rBV2	169	199	0.03%	0.004%
26	8.171	1024	1028	1030	rBV2	217	228	0.03%	0.005%
27	8.281	1034	1046	1061	rBV2	246078	763353	100.00%	15.878%
28	8.457	1073	1075	1078	rVB2	360	283	0.04%	0.006%
29	8.482	1078	1079	1082	rVB2	286	257	0.03%	0.005%
30	8.531	1083	1087	1089	rBV2	202	253	0.03%	0.005%
31	8.616	1098	1101	1103	rBV2	196	308	0.04%	0.006%
32	8.634	1103	1104	1107	rVB2	350	232	0.03%	0.005%
33	8.689	1109	1113	1115	rBV4	524	652	0.09%	0.014%
34	8.848	1131	1139	1148	rVV	268781	515513	67.53%	10.723%

Data Path : Z:\VOASRV\HPCHEM1\MSVOA W\DATA\VW100118\  
 Data File : VW005741.D  
 Acq On : 01 Oct 2018 17:45  
 Operator : SY/AP  
 Sample : J5180-10  
 Misc : 5.67G/10ML/MSVOA W/SOIL  
 ALS Vial : 1 Sample Multiplier: 1

Instrument :  
 MSVOA\_W  
 ClientSampleId :  
 JLC19

## Integration Parameters: LSCINT.P

Integrator: RTE  
 Smoothing : OFF  
 Sampling : 1  
 Start Thrs: 0.2  
 Stop Thrs : 0

Filtering: 5  
 Min Area: 0 % of largest Peak  
 Max Peaks: 100  
 Peak Location: TOP

If leading or trailing edge < 100 prefer < Baseline drop else tangent >  
 Peak separation: 5

Method : Z:\VOASRV\HPCHEM1\MSVOA\_W\METHOD\SOM2WLM092818S.M  
 Title : VOC Analysis

35	8.957	1155	1157	1158	rBV	294	233	0.03%	0.005%
36	9.043	1169	1171	1172	rVV2	556	428	0.06%	0.009%
37	9.085	1172	1178	1181	rVB6	1415	3156	0.41%	0.066%
38	9.281	1201	1210	1221	rVV	178567	356499	46.70%	7.415%
39	9.402	1226	1230	1232	rBV3	230	278	0.04%	0.006%
40	9.665	1270	1273	1279	rVB5	803	1415	0.19%	0.029%
41	9.762	1284	1289	1294	rVV3	2118	4033	0.53%	0.084%
42	9.896	1304	1311	1318	rBV2	7487	15293	2.00%	0.318%
43	10.036	1328	1334	1343	rVB	76007	139448	18.27%	2.901%
44	10.122	1346	1348	1357	rVB6	664	1135	0.15%	0.024%
45	10.219	1360	1364	1365	rBV2	675	894	0.12%	0.019%
46	10.256	1366	1370	1374	rVB2	2490	4240	0.56%	0.088%
47	10.329	1374	1382	1389	rBV	295112	511685	67.03%	10.643%
48	10.488	1406	1408	1410	rBV2	265	234	0.03%	0.005%
49	10.579	1416	1423	1431	rVV	54446	96326	12.62%	2.004%
50	10.713	1438	1445	1451	rBV	18319	32098	4.20%	0.668%
51	10.866	1463	1470	1475	rBV4	6512	12095	1.58%	0.252%
52	10.933	1475	1481	1491	rVV	82694	148465	19.45%	3.088%
53	11.018	1492	1495	1498	rVV4	1603	2605	0.34%	0.054%
54	11.067	1498	1503	1511	rVB	20179	32599	4.27%	0.678%
55	11.183	1518	1522	1526	rVB4	1056	1786	0.23%	0.037%
56	11.250	1530	1533	1534	rBV3	217	230	0.03%	0.005%
57	11.445	1556	1565	1571	rVV2	10814	18628	2.44%	0.387%
58	11.524	1575	1578	1582	rBV3	298	505	0.07%	0.011%
59	11.634	1588	1596	1610	rBV	297245	500848	65.61%	10.418%
60	11.731	1610	1612	1616	rVB2	570	689	0.09%	0.014%
61	11.792	1620	1622	1624	rBV	230	230	0.03%	0.005%
62	11.841	1626	1630	1635	rVB4	1593	2443	0.32%	0.051%
63	12.006	1655	1657	1660	rBV3	350	418	0.05%	0.009%
64	12.158	1681	1682	1684	rBV2	340	253	0.03%	0.005%
65	12.274	1699	1701	1704	rBV2	202	246	0.03%	0.005%
66	12.469	1731	1733	1734	rBV	699	627	0.08%	0.013%
67	12.615	1751	1757	1764	rBV	25614	41046	5.38%	0.854%
68	12.701	1764	1771	1778	rVB	115228	195284	25.58%	4.062%
69	12.768	1778	1782	1787	rBV5	972	1408	0.18%	0.029%
70	12.890	1800	1802	1805	rVB2	357	254	0.03%	0.005%
71	12.938	1805	1810	1816	rBV	6228	9255	1.21%	0.193%

Data Path : Z:\VOASRV\HPCHEM1\MSVOA W\DATA\VW100118\  
 Data File : VW005741.D  
 Acq On : 01 Oct 2018 17:45  
 Operator : SY/AP  
 Sample : J5180-10  
 Misc : 5.67G/10ML/MSVOA W/SOIL  
 ALS Vial : 1 Sample Multiplier: 1

Instrument :  
 MSVOA\_W  
 ClientSampleId :  
 JLC19

## Integration Parameters: LSCINT.P

Integrator: RTE  
 Smoothing : OFF  
 Sampling : 1  
 Start Thrs: 0.2  
 Stop Thrs : 0

Filtering: 5  
 Min Area: 0 % of largest Peak  
 Max Peaks: 100  
 Peak Location: TOP

If leading or trailing edge < 100 prefer < Baseline drop else tangent >  
 Peak separation: 5

Method : Z:\VOASRV\HPCHEM1\MSVOA\_W\METHOD\SOM2WLM092818S.M  
 Title : VOC Analysis

72	13.030	1823	1825	1826	rBV2	358	263	0.03%	0.005%
73	13.091	1833	1835	1837	rVB2	493	375	0.05%	0.008%
74	13.207	1850	1854	1860	rVB5	769	1453	0.19%	0.030%
75	13.255	1860	1862	1863	rBV	626	508	0.07%	0.011%
76	13.304	1866	1870	1877	rVB2	5463	8425	1.10%	0.175%
77	13.414	1882	1888	1894	rVB3	1465	2662	0.35%	0.055%
78	13.475	1894	1898	1901	rBV2	1298	1656	0.22%	0.034%
79	13.518	1901	1905	1906	rBV2	724	935	0.12%	0.019%
80	13.566	1906	1913	1919	rBV	153028	245775	32.20%	5.112%
81	13.652	1925	1927	1932	rVB2	1725	1714	0.22%	0.036%
82	13.743	1940	1942	1943	rBV2	451	406	0.05%	0.008%
83	13.774	1943	1947	1950	rVV4	1298	2168	0.28%	0.045%
84	13.804	1950	1952	1954	rVV3	825	817	0.11%	0.017%
85	13.859	1955	1961	1968	rVV	131351	215433	28.22%	4.481%
86	13.908	1968	1969	1974	rVV4	1560	1827	0.24%	0.038%
87	13.956	1975	1977	1982	rVB5	1132	1704	0.22%	0.035%
88	14.005	1982	1985	1986	rBV3	983	820	0.11%	0.017%
89	14.078	1994	1997	2004	rVB2	6734	10485	1.37%	0.218%
90	14.322	2031	2037	2038	rBV3	1552	3060	0.40%	0.064%
91	14.377	2044	2046	2049	rVB2	1385	1117	0.15%	0.023%
92	14.432	2050	2055	2061	rVB2	7007	10149	1.33%	0.211%
93	14.603	2082	2083	2086	rBV2	306	286	0.04%	0.006%
94	14.743	2103	2106	2112	rVB5	1566	2308	0.30%	0.048%
95	14.798	2112	2115	2118	rBV2	296	396	0.05%	0.008%
96	15.414	2213	2216	2217	rBV2	665	568	0.07%	0.012%
97	15.444	2218	2221	2227	rVB	4078	6950	0.91%	0.145%
98	15.676	2258	2259	2261	rBV	567	368	0.05%	0.008%
99	15.706	2263	2264	2267	rVV2	647	498	0.07%	0.010%
100	15.974	2307	2308	2309	rBV	469	258	0.03%	0.005%

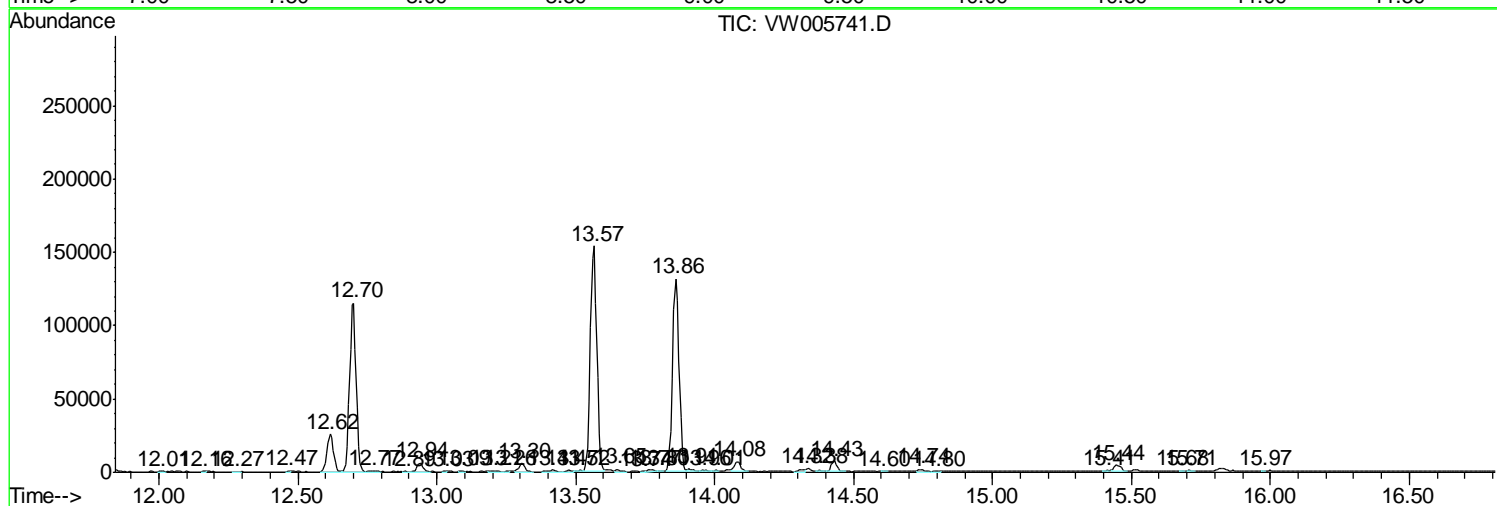
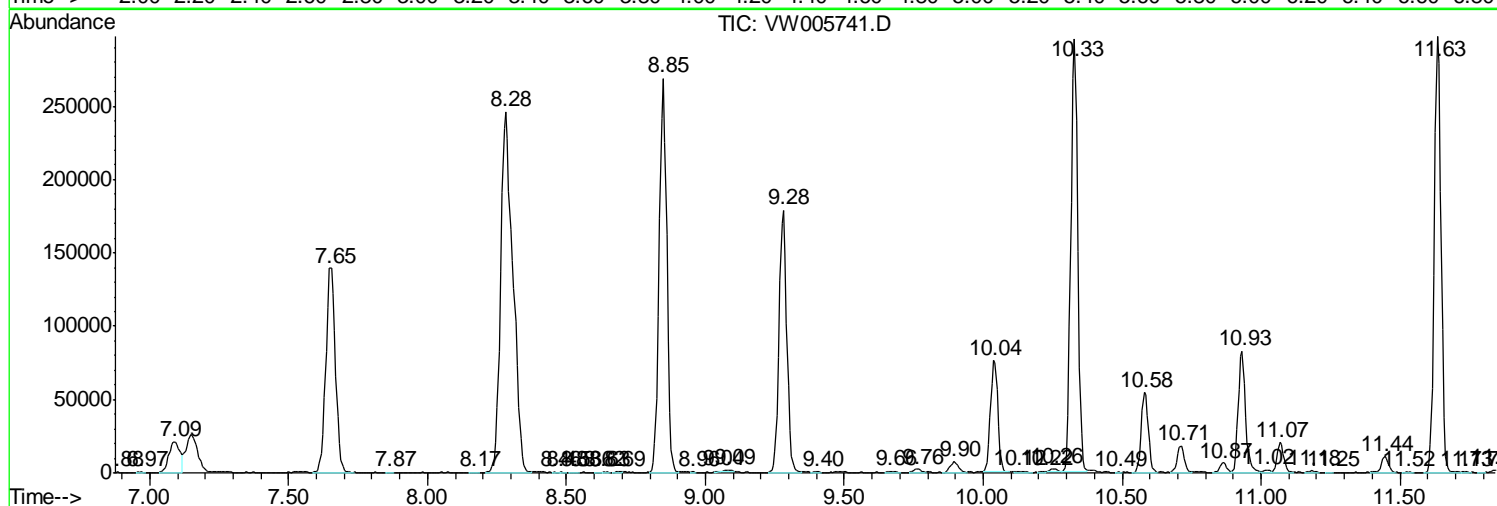
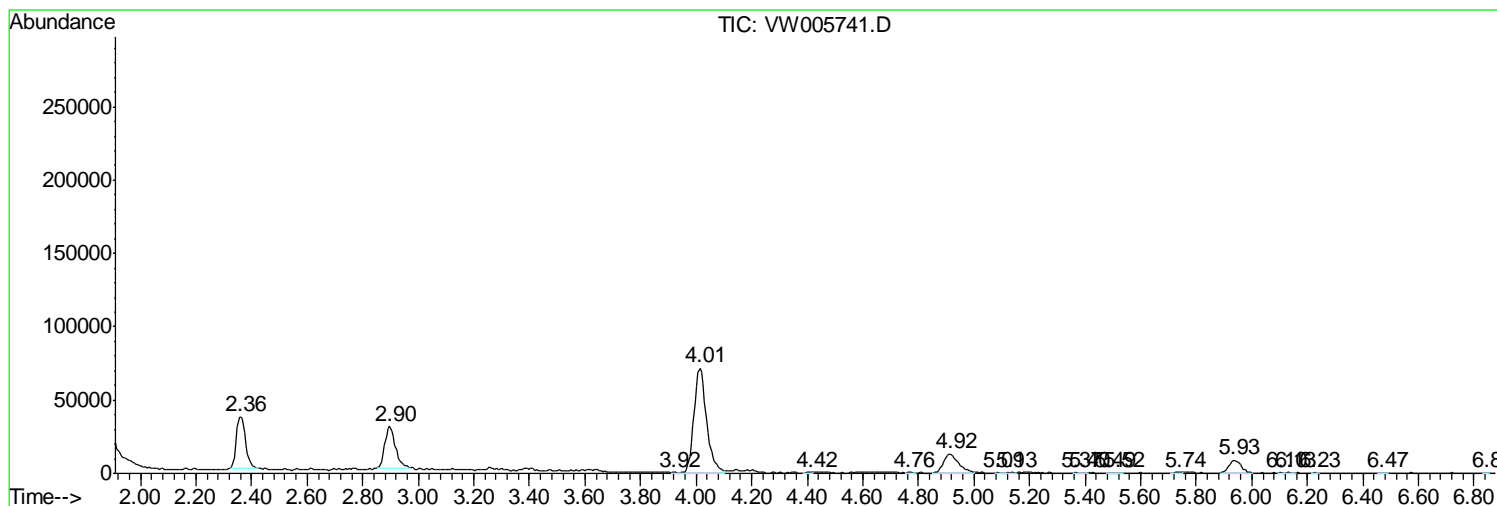
Sum of corrected areas: 4807713

Data Path : Z:\VOASRV\HPCHEM1\MSVOA W\DATA\VW100118\  
 Data File : VW005741.D  
 Acq On : 01 Oct 2018 17:45  
 Operator : SY/AP  
 Sample : J5180-10  
 Misc : 5.67G/10ML/MSVOA W/SOIL  
 ALS Vial : 1 Sample Multiplier: 1

**Instrument :**  
 MSVOA\_W  
**ClientSampled :**  
 JLC19

Quant Method : Z:\VOASRV\HPCHEM1\MSVOA\_W\METHOD\SOM2WLM092818S.M  
 Quant Title : VOC Analysis

TIC Library : C:\DATABASE\NIST11.L  
 TIC Integration Parameters: LSCINT.P



Data Path : Z:\VOASRV\HPCHEM1\MSVOA W\DATA\VW100118\  
 Data File : VW005741.D  
 Acq On : 01 Oct 2018 17:45  
 Operator : SY/AP  
 Sample : J5180-10  
 Misc : 5.67G/10ML/MSVOA W/SOIL  
 ALS Vial : 1 Sample Multiplier: 1

Instrument :  
 MSVOA\_W  
 ClientSampled :  
 JLC19

Quant Method : Z:\VOASRV\HPCHEM1\MSVOA\_W\METHOD\SOM2WLM092818S.M  
 Quant Title : VOC Analysis

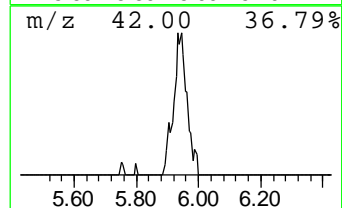
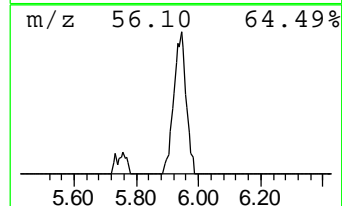
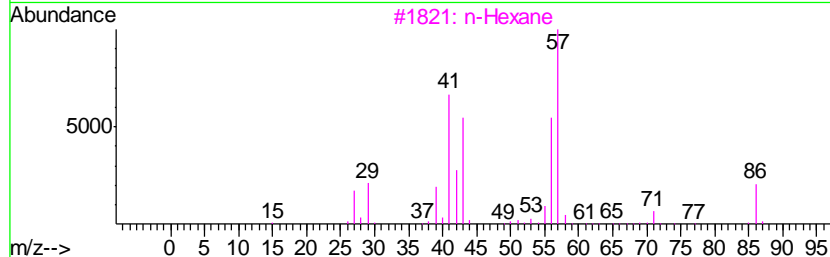
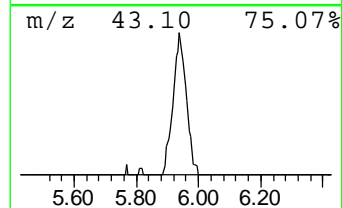
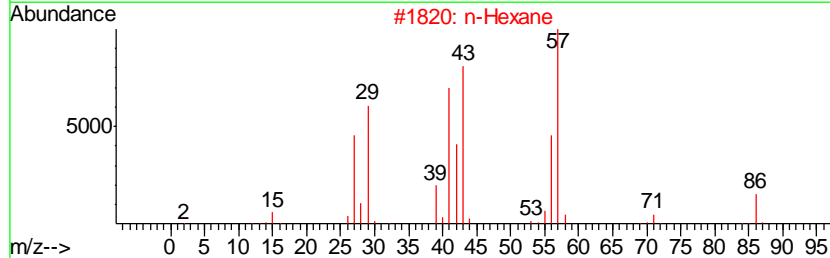
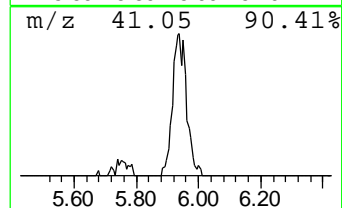
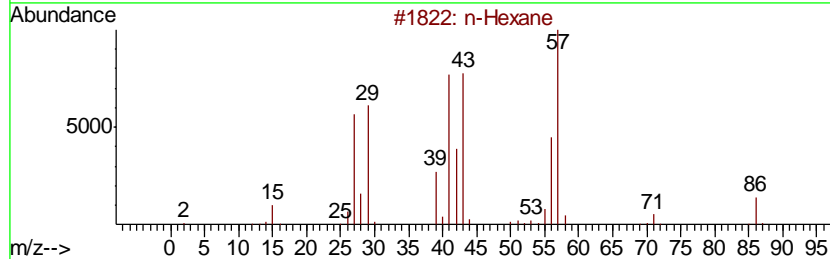
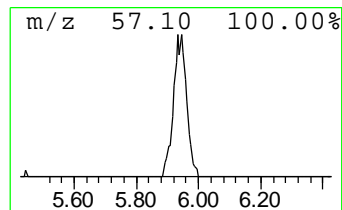
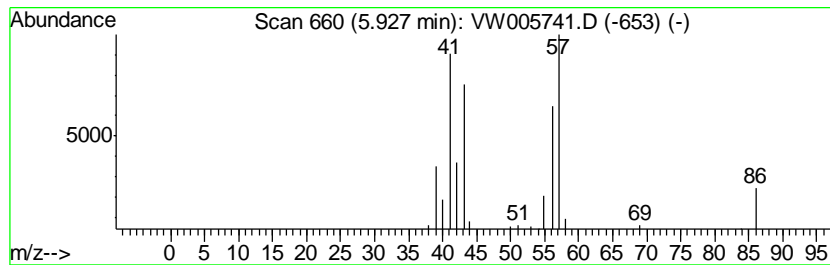
TIC Library : C:\DATABASE\NIST11.L  
 TIC Integration Parameters: LSCINT.P

\*\*\*\*\*  
 Peak Number 1 (DEL) Alkane: Straight-Chai... Concentration Rank 5

R.T.	EstConc	Area	Relative to ISTD	R.T.
5.93	1.25 ug/L	25866	1,4-Difluorobenzene	8.85

Hit#	of	Tentative ID	MW	MolForm	CAS#	Qual
1	5	n-Hexane	86	C6H14	000110-54-3	72
2		n-Hexane	86	C6H14	000110-54-3	72
3		n-Hexane	86	C6H14	000110-54-3	64
4		1-Butanol	74	C4H10O	000071-36-3	28
5		Hydroperoxide, hexyl	118	C6H14O2	004312-76-9	25



Data Path : Z:\VOASRV\HPCHEM1\MSVOA\_W\DATA\VW100118\  
Data File : VW005741.D  
Acq On : 01 Oct 2018 17:45  
Operator : SY/AP  
Sample : J5180-10  
Misc : 5.67G/10ML/MSVOA\_W/SOIL  
ALS Vial : 1 Sample Multiplier: 1

Instrument :  
MSVOA\_W  
ClientSampleId :  
JLC19

Quant Method : Z:\VOASRV\HPCHEM1\MSVOA\_W\METHOD\SOM2WLM092818S.M  
Quant Title : VOC Analysis

TIC Library : C:\DATABASE\NIST11.L  
TIC Integration Parameters: LSCINT.P

TIC Top Hit name	RT	EstConc	Units	Response	--Internal Standard--			
					#	RT	Resp	Conc
(DEL) Alkane: Str...	5.93	1.3	ug/L	25866	1	8.85	515513	25.0