

Data Path : Z:\VOASRV\HPCHEM1\MSVOA W\DATA\VW100218\
 Data File : VW005777.D
 Acq On : 02 Oct 2018 15:29
 Operator : SY/AP
 Sample : J5181-20
 Misc : 5.21G/10ML/MSVOA W/SOIL
 ALS Vial : 1 Sample Multiplier: 1

Instrument :
 MSVOA_W
 ClientSampleId :
 JLC49

Quant Time: Oct 03 07:06:04 2018
 Quant Method : Z:\VOASRV\HPCHEM1\MSVOA_W\METHOD\SOM2WLM092818S.M
 Quant Title : VOC Analysis
 QLast Update : Wed Oct 03 05:07:10 2018
 Response via : Initial Calibration

Internal Standards	R.T.	QIon	Response	Conc	Units	Dev(Min)
1) 1,4-Difluorobenzene	8.85	114	185534	25.00	ug/L	0.00
28) Chlorobenzene-d5	11.63	117	188180	25.00	ug/L	0.00
60) 1,4-Dichlorobenzene-d4	13.57	152	62789	25.00	ug/L	0.00

System Monitoring Compounds

4) Vinyl Chloride-d3	2.35	65	31644	13.38	ug/L	0.00
Spiked Amount	25.000	Range	30 - 150	Recovery	=	53.52%
7) Chloroethane-d5	2.89	69	28389	15.38	ug/L	0.00
Spiked Amount	25.000	Range	30 - 150	Recovery	=	61.52%
10) 1,1-Dichloroethene-d2	4.01	63	57078	11.05	ug/L	0.00
Spiked Amount	25.000	Range	45 - 110	Recovery	=	44.20%#
20) 2-Butanone-d5	7.09	46	22996	30.29	ug/L	0.00
Spiked Amount	50.000	Range	20 - 135	Recovery	=	60.58%
24) Chloroform-d	7.65	84	100806	21.15	ug/L	0.00
Spiked Amount	25.000	Range	40 - 150	Recovery	=	84.60%
26) 1,2-Dichloroethane-d4	8.31	65	65556	22.71	ug/L	0.00
Spiked Amount	25.000	Range	70 - 130	Recovery	=	90.84%
29) Benzene-d6	8.28	84	162988	17.50	ug/L	0.00
Spiked Amount	25.000	Range	20 - 135	Recovery	=	70.00%
33) 1,2-Dichloropropane-d6	9.28	67	54212	20.13	ug/L	0.00
Spiked Amount	25.000	Range	70 - 120	Recovery	=	80.52%
37) Toluene-d8	10.33	98	154972	16.85	ug/L	0.00
Spiked Amount	25.000	Range	30 - 130	Recovery	=	67.40%
38) trans-1,3-Dichloropropene-	10.58	79	23993	16.97	ug/L	0.00
Spiked Amount	25.000	Range	30 - 135	Recovery	=	67.88%
39) 2-Hexanone-d5	10.93	63	16909	26.82	ug/L	0.00
Spiked Amount	50.000	Range	20 - 135	Recovery	=	53.64%
48) 1,1,2,2-Tetrachloroethane-	12.69	84	51663	19.75	ug/L	0.00
Spiked Amount	25.000	Range	45 - 120	Recovery	=	79.00%
61) 1,2-Dichlorobenzene-d4	13.86	152	45977	20.69	ug/L	0.00
Spiked Amount	25.000	Range	75 - 120	Recovery	=	82.76%

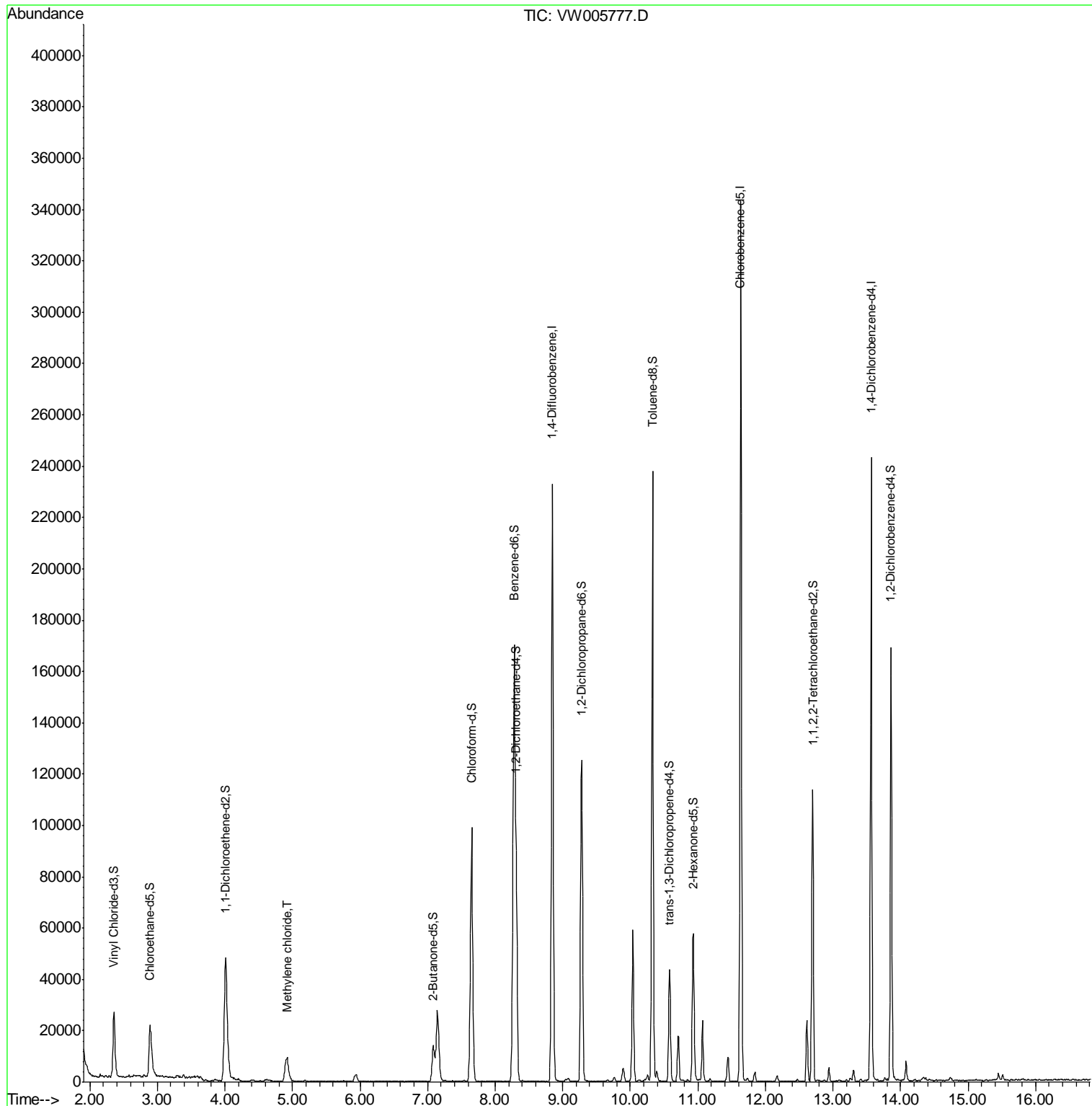
Target Compounds					Ovalue
16) Methylene chloride	4.92	84	8368	2.735 ug/L	98

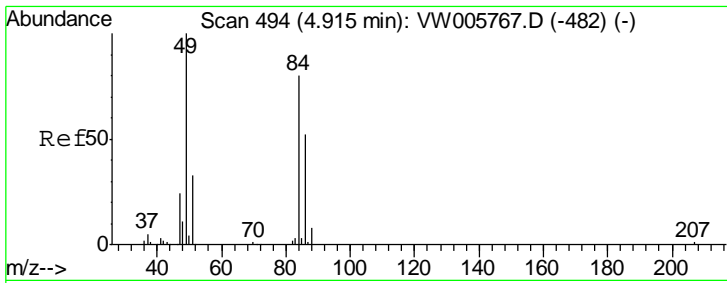
(#) = qualifier out of range (m) = manual integration (+) = signals summed

Data Path : Z:\VOASRV\HPCHEM1\MSVOA W\DATA\VW100218\
 Data File : VW005777.D
 Acq On : 02 Oct 2018 15:29
 Operator : SY/AP
 Sample : J5181-20
 Misc : 5.21G/10ML/MSVOA W/SOIL
 ALS Vial : 1 Sample Multiplier: 1

Instrument :
 MSVOA_W
 ClientSampled :
 JLC49

Quant Time: Oct 03 07:06:04 2018
 Quant Method : Z:\VOASRV\HPCHEM1\MSVOA_W\METHOD\SOM2WLM092818S.M
 Quant Title : VOC Analysis
 QLast Update : Wed Oct 03 05:07:10 2018
 Response via : Initial Calibration





#16
 Methylene chloride
 Concen: 2.735 ug/L
 RT: 4.92 min Scan# 494
 Delta R.T. -0.00 min
 Lab File: VW005777.D
 Acq: 02 Oct 2018 15:29

Instrument :
 MSVOA_W
 ClientSampled :
 JLC49

Tot Ion: 84 Resp: 8368
 Ion Ratio Lower Upper
 84 100
 49 128.2 87.2 162.0
 86 61.6 43.2 80.2

