

Data Path : Z:\VOASRV\HPCHEM1\MSVOA W\DATA\VW100218\  
 Data File : VW005784.D  
 Acq On : 02 Oct 2018 18:30  
 Operator : SY/AP  
 Sample : J5180-13RE  
 Misc : 3.67G/10ML/MSVOA W/SOIL  
 ALS Vial : 1 Sample Multiplier: 1

Instrument :  
 MSVOA\_W  
 ClientSampleId :  
 JLC22RE

Integration Parameters: LSCINT.P

Integrator: RTE  
 Smoothing : OFF  
 Sampling : 1  
 Start Thrs: 0.2  
 Stop Thrs : 0

Filtering: 5  
 Min Area: 0 % of largest Peak  
 Max Peaks: 100  
 Peak Location: TOP

If leading or trailing edge < 100 prefer < Baseline drop else tangent >  
 Peak separation: 5

Method : Z:\VOASRV\HPCHEM1\MSVOA\_W\METHOD\SOM2WLM092818S.M  
 Title : VOC Analysis

Signal : TIC

peak #	R.T. min	first scan	max scan	last scan	PK TY	peak height	corr. area	corr. % max.	% of total
1	2.355	69	74	85	rVB	31769	68299	9.72%	1.347%
2	2.891	156	162	180	rVB2	24151	70705	10.06%	1.394%
3	3.836	316	317	318	rBV	393	247	0.04%	0.005%
4	4.013	335	346	360	rBV	60161	203670	28.99%	4.016%
5	4.294	390	392	394	rVB2	319	188	0.03%	0.004%
6	4.367	403	404	406	rBV2	338	329	0.05%	0.006%
7	4.598	438	442	443	rBV2	487	575	0.08%	0.011%
8	4.665	452	453	454	rBV	376	172	0.02%	0.003%
9	4.726	462	463	466	rBV2	253	229	0.03%	0.005%
10	4.915	482	494	508	rBV4	12083	47131	6.71%	0.929%
11	5.080	519	521	523	rBV	212	215	0.03%	0.004%
12	5.379	569	570	572	rVV2	235	168	0.02%	0.003%
13	5.421	576	577	582	rVB2	436	377	0.05%	0.007%
14	5.464	582	584	585	rVB	239	165	0.02%	0.003%
15	5.787	635	637	641	rBV	203	251	0.04%	0.005%
16	5.940	652	662	671	rVB4	4943	14392	2.05%	0.284%
17	6.061	680	682	683	rBV2	191	146	0.02%	0.003%
18	6.129	691	693	695	rBV2	345	372	0.05%	0.007%
19	6.190	701	703	707	rBV3	273	326	0.05%	0.006%
20	6.238	707	711	712	rBV	196	239	0.03%	0.005%
21	6.379	730	734	735	rBV2	278	285	0.04%	0.006%
22	6.537	757	760	763	rVB2	224	274	0.04%	0.005%
23	6.568	763	765	767	rBV2	149	173	0.02%	0.003%
24	6.793	799	802	803	rBV	206	230	0.03%	0.005%
25	6.854	808	812	813	rBV2	349	388	0.06%	0.008%
26	6.872	813	815	817	rVB2	251	185	0.03%	0.004%
27	6.903	817	820	823	rBV	277	293	0.04%	0.006%
28	6.946	823	827	828	rBV	195	254	0.04%	0.005%
29	7.086	841	850	854	rBV	18701	47301	6.73%	0.933%
30	7.323	887	889	891	rBV2	295	259	0.04%	0.005%
31	7.342	891	892	895	rVB2	353	258	0.04%	0.005%
32	7.378	895	898	899	rBV2	186	192	0.03%	0.004%
33	7.397	899	901	906	rVV3	249	413	0.06%	0.008%
34	7.525	919	922	923	rBV	501	465	0.07%	0.009%

Data Path : Z:\VOASRV\HPCHEM1\MSVOA W\DATA\VW100218\  
 Data File : VW005784.D  
 Acq On : 02 Oct 2018 18:30  
 Operator : SY/AP  
 Sample : J5180-13RE  
 Misc : 3.67G/10ML/MSVOA W/SOIL  
 ALS Vial : 1 Sample Multiplier: 1

Instrument :  
 MSVOA\_W  
 ClientSampleId :  
 JLC22RE

## Integration Parameters: LSCINT.P

Integrator: RTE  
 Smoothing : OFF  
 Sampling : 1  
 Start Thrs: 0.2  
 Stop Thrs : 0

Filtering: 5  
 Min Area: 0 % of largest Peak  
 Max Peaks: 100  
 Peak Location: TOP

If leading or trailing edge < 100 prefer < Baseline drop else tangent >  
 Peak separation: 5

Method : Z:\VOASRV\HPCHEM1\MSVOA\_W\METHOD\SOM2WLM092818S.M  
 Title : VOC Analysis

35	7.653	931	943	953	rBV	134679	327606	46.63%	6.460%
36	8.134	1018	1022	1024	rVB2	263	388	0.06%	0.008%
37	8.165	1024	1027	1028	rBV2	229	213	0.03%	0.004%
38	8.281	1034	1046	1061	rBV2	223464	702561	100.00%	13.853%
39	8.494	1079	1081	1083	rBV2	269	292	0.04%	0.006%
40	8.537	1086	1088	1090	rBV2	282	245	0.03%	0.005%
41	8.610	1098	1100	1102	rBV	145	157	0.02%	0.003%
42	8.689	1111	1113	1114	rBV2	282	239	0.03%	0.005%
43	8.848	1130	1139	1149	rBV	254640	506630	72.11%	9.990%
44	9.000	1161	1164	1167	rBV3	294	489	0.07%	0.010%
45	9.043	1167	1171	1173	rBV2	860	1276	0.18%	0.025%
46	9.280	1201	1210	1220	rBV	166888	341010	48.54%	6.724%
47	9.482	1241	1243	1245	rBV2	233	206	0.03%	0.004%
48	9.610	1263	1264	1266	rBV	187	127	0.02%	0.003%
49	9.658	1268	1272	1278	rVB5	902	1555	0.22%	0.031%
50	9.719	1278	1282	1284	rVB2	276	230	0.03%	0.005%
51	9.756	1284	1288	1296	rVB4	1384	2853	0.41%	0.056%
52	9.896	1306	1311	1321	rVB3	3886	7602	1.08%	0.150%
53	10.036	1326	1334	1343	rVB	82020	146962	20.92%	2.898%
54	10.219	1359	1364	1366	rBV4	845	1499	0.21%	0.030%
55	10.329	1374	1382	1389	rBV	305826	544397	77.49%	10.734%
56	10.481	1406	1407	1410	rBV2	365	381	0.05%	0.008%
57	10.585	1416	1424	1433	rVB	58311	103022	14.66%	2.031%
58	10.658	1433	1436	1439	rBV2	299	457	0.07%	0.009%
59	10.713	1439	1445	1452	rVB	14316	25048	3.57%	0.494%
60	10.866	1466	1470	1473	rBV5	1325	2018	0.29%	0.040%
61	10.926	1474	1480	1491	rBV	82358	148105	21.08%	2.920%
62	11.067	1498	1503	1509	rVB	25930	40762	5.80%	0.804%
63	11.396	1555	1557	1558	rBV	331	233	0.03%	0.005%
64	11.445	1560	1565	1574	rVB2	6095	9803	1.40%	0.193%
65	11.634	1588	1596	1605	rBV	363018	612357	87.16%	12.074%
66	11.841	1623	1630	1636	rBV3	4069	7130	1.01%	0.141%
67	11.908	1640	1641	1642	rVB	367	134	0.02%	0.003%
68	11.993	1654	1655	1657	rBV	177	173	0.02%	0.003%
69	12.030	1660	1661	1663	rVB	240	154	0.02%	0.003%
70	12.048	1663	1664	1667	rBV2	285	292	0.04%	0.006%
71	12.170	1678	1684	1692	rBV6	2477	5221	0.74%	0.103%

Data Path : Z:\VOASRV\HPCHEM1\MSVOA W\DATA\VW100218\  
 Data File : VW005784.D  
 Acq On : 02 Oct 2018 18:30  
 Operator : SY/AP  
 Sample : J5180-13RE  
 Misc : 3.67G/10ML/MSVOA W/SOIL  
 ALS Vial : 1 Sample Multiplier: 1

Instrument :  
 MSVOA\_W  
 ClientSampleId :  
 JLC22RE

## Integration Parameters: LSCINT.P

Integrator: RTE  
 Smoothing : OFF  
 Sampling : 1  
 Start Thrs: 0.2  
 Stop Thrs : 0

Filtering: 5  
 Min Area: 0 % of largest Peak  
 Max Peaks: 100  
 Peak Location: TOP

If leading or trailing edge < 100 prefer < Baseline drop else tangent >  
 Peak separation: 5

Method : Z:\VOASRV\HPCHEM1\MSVOA\_W\METHOD\SOM2WLM092818S.M  
 Title : VOC Analysis

72	12.256	1696	1698	1701	rBV2	182	200	0.03%	0.004%
73	12.475	1728	1734	1740	rBV5	3476	6035	0.86%	0.119%
74	12.615	1751	1757	1764	rVB	20464	34154	4.86%	0.673%
75	12.694	1764	1770	1778	rBV	142544	239647	34.11%	4.725%
76	12.768	1779	1782	1783	rBV2	1024	711	0.10%	0.014%
77	12.853	1795	1796	1797	rBV2	282	198	0.03%	0.004%
78	12.938	1805	1810	1817	rVB2	11050	17391	2.48%	0.343%
79	13.030	1820	1825	1831	rVB2	5486	9145	1.30%	0.180%
80	13.261	1858	1863	1865	rBV3	1609	2290	0.33%	0.045%
81	13.304	1866	1870	1876	rVB	5141	8021	1.14%	0.158%
82	13.359	1877	1879	1882	rBV2	193	173	0.02%	0.003%
83	13.383	1882	1883	1884	rBV	280	152	0.02%	0.003%
84	13.414	1884	1888	1891	rBV4	903	1402	0.20%	0.028%
85	13.475	1894	1898	1901	rBV3	3240	5297	0.75%	0.104%
86	13.566	1906	1913	1920	rBV	232592	371774	52.92%	7.331%
87	13.725	1934	1939	1942	rBV3	702	1260	0.18%	0.025%
88	13.774	1942	1947	1949	rBV3	1580	2190	0.31%	0.043%
89	13.859	1954	1961	1968	rBV	196354	314174	44.72%	6.195%
90	14.005	1980	1985	1990	rBV3	15711	23710	3.37%	0.468%
91	14.078	1993	1997	2006	rVB2	8321	14013	1.99%	0.276%
92	14.249	2023	2025	2029	rBV3	343	351	0.05%	0.007%
93	14.341	2034	2040	2042	rBV7	2296	3847	0.55%	0.076%
94	14.432	2051	2055	2060	rVB2	1299	1871	0.27%	0.037%
95	14.645	2088	2090	2092	rBV	444	212	0.03%	0.004%
96	14.737	2101	2105	2108	rBV4	1396	2031	0.29%	0.040%
97	15.048	2154	2156	2157	rBV	432	269	0.04%	0.005%
98	15.206	2180	2182	2183	rBV2	387	235	0.03%	0.005%
99	15.450	2218	2222	2227	rVB3	4485	6968	0.99%	0.137%
100	15.511	2227	2232	2237	rBV2	1766	2853	0.41%	0.056%

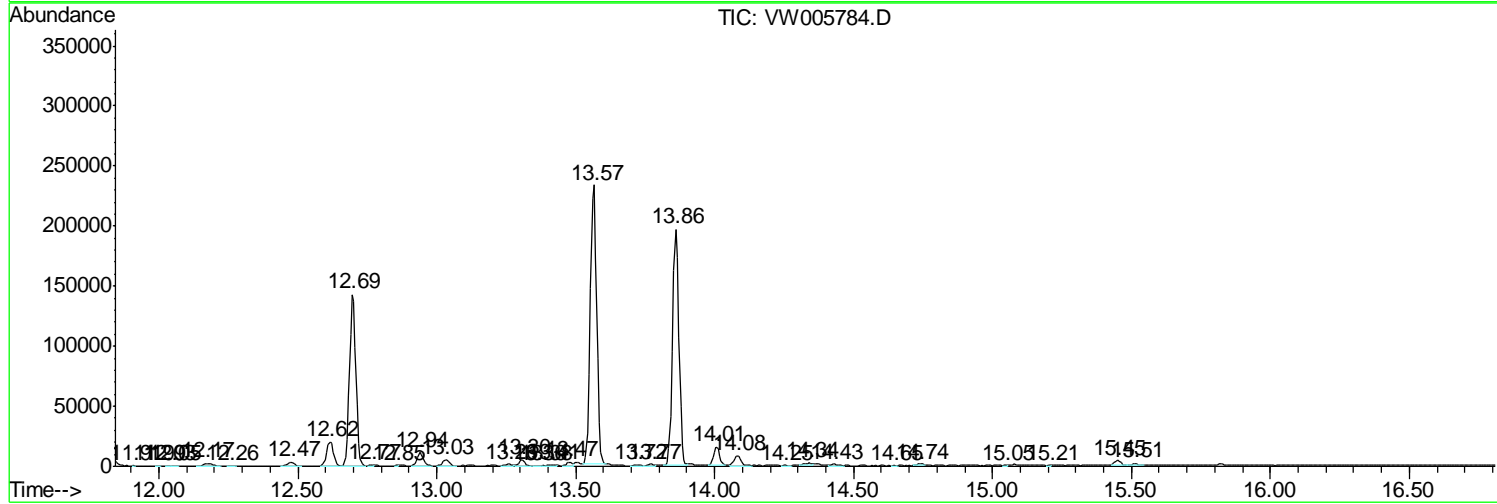
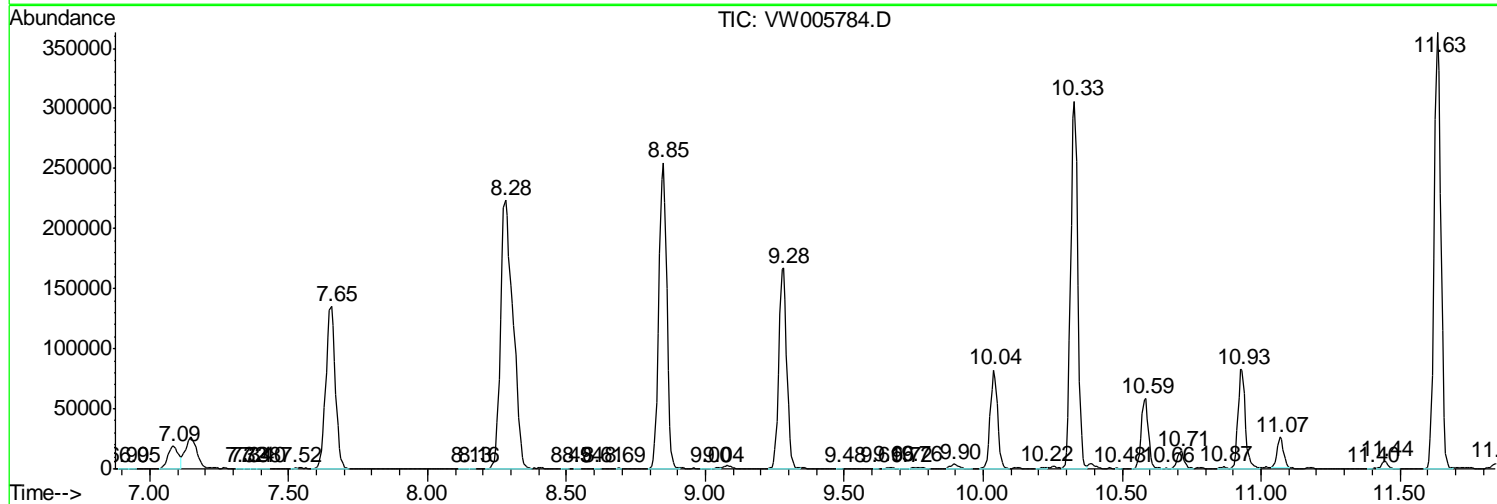
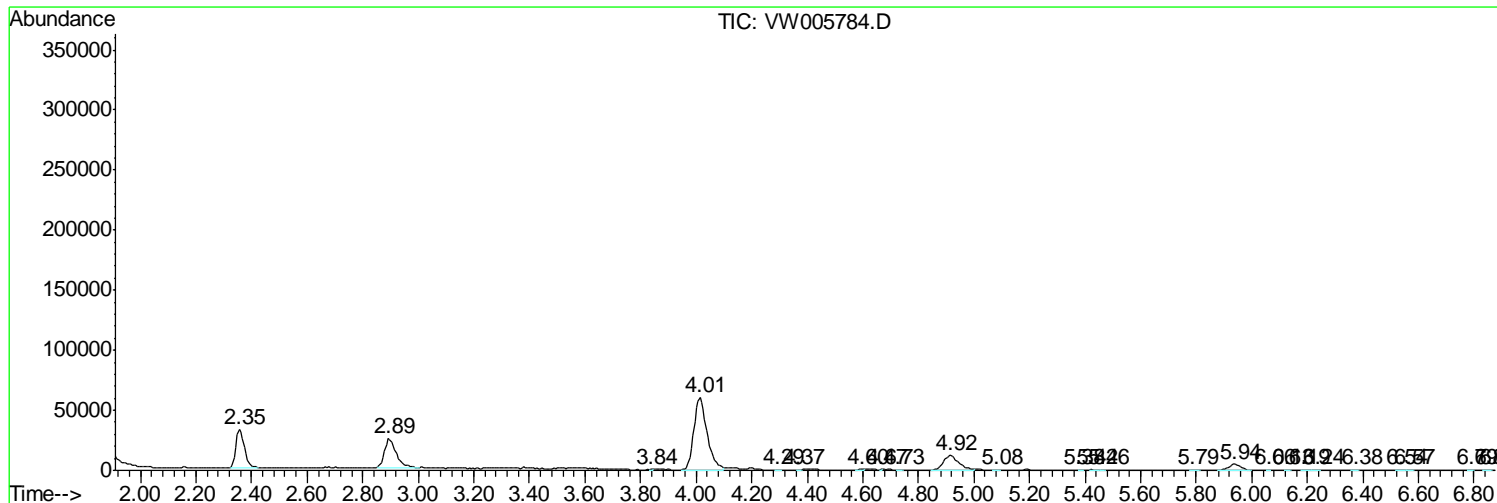
Sum of corrected areas: 5071567

Data Path : Z:\VOASRV\HPCHEM1\MSVOA W\DATA\VW100218\  
 Data File : VW005784.D  
 Acq On : 02 Oct 2018 18:30  
 Operator : SY/AP  
 Sample : J5180-13RE  
 Misc : 3.67G/10ML/MSVOA W/SOIL  
 ALS Vial : 1 Sample Multiplier: 1

**Instrument :**  
 MSVOA\_W  
**ClientSampleId :**  
 JLC22RE

Quant Method : Z:\VOASRV\HPCHEM1\MSVOA\_W\METHOD\SOM2WLM092818S.M  
 Quant Title : VOC Analysis

TIC Library : C:\DATABASE\NIST11.L  
 TIC Integration Parameters: LSCINT.P



Data Path : Z:\VOASRV\HPCHEM1\MSVOA W\DATA\VW100218\  
 Data File : VW005784.D  
 Acq On : 02 Oct 2018 18:30  
 Operator : SY/AP  
 Sample : J5180-13RE  
 Misc : 3.67G/10ML/MSVOA W/SOIL  
 ALS Vial : 1 Sample Multiplier: 1

Instrument :  
 MSVOA\_W  
 ClientSampled :  
 JLC22RE

Quant Method : Z:\VOASRV\HPCHEM1\MSVOA\_W\METHOD\SOM2WLM092818S.M  
 Quant Title : VOC Analysis

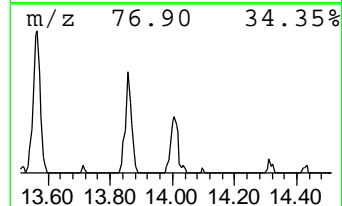
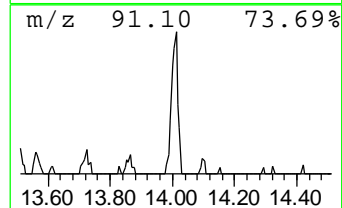
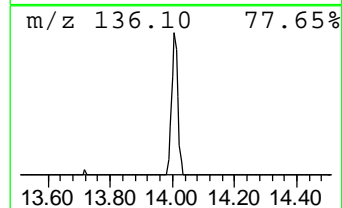
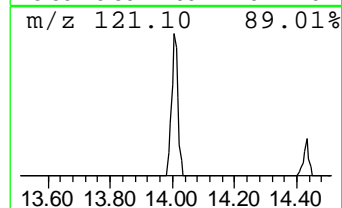
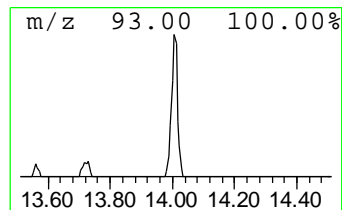
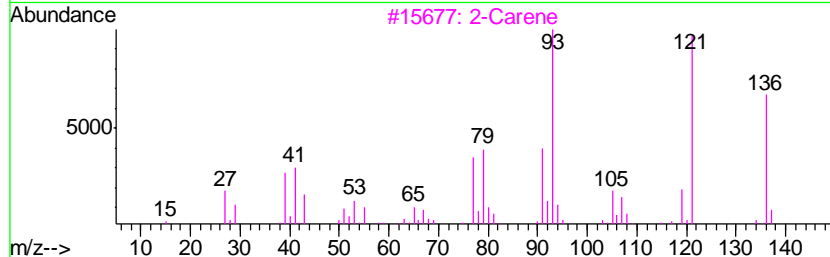
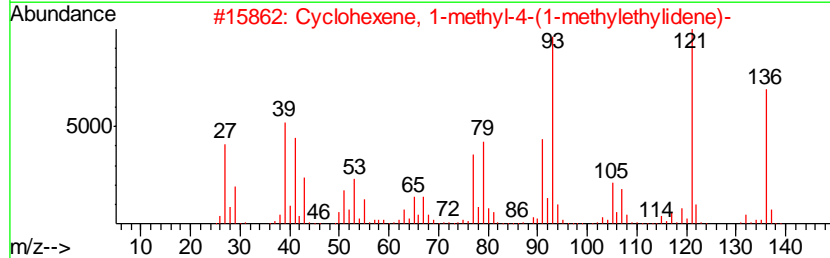
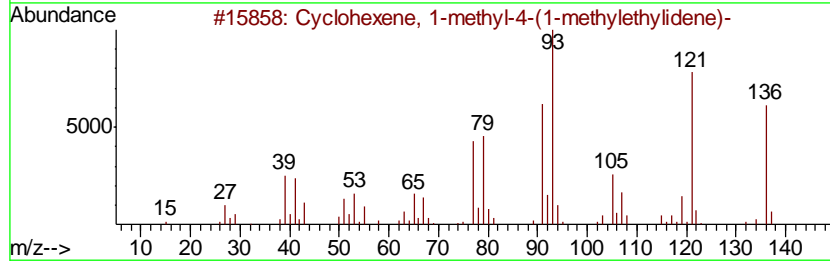
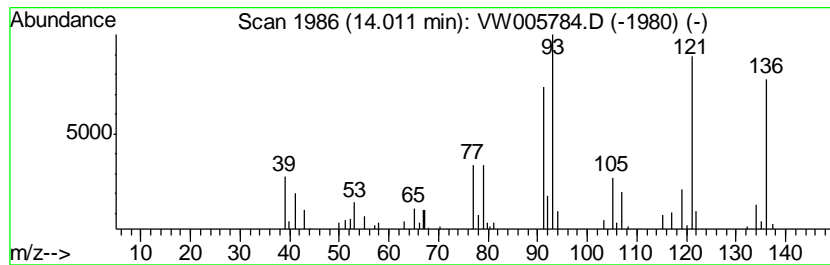
TIC Library : C:\DATABASE\NIST11.L  
 TIC Integration Parameters: LSCINT.P

\*\*\*\*\*  
 Peak Number 4 Cyclohexene, 1-methyl-4-(1-... Concentration Rank 4

R.T.	EstConc	Area	Relative to ISTD	R.T.
14.01	1.59 ug/L	23710	1,4-Dichlorobenzene-d4	13.57

Hit#	of	Tentative ID	MW	MolForm	CAS#	Qual
1	5	Cyclohexene, 1-methyl-4-(1-methy...	136	C10H16	000586-62-9	94
2		Cyclohexene, 1-methyl-4-(1-methy...	136	C10H16	000586-62-9	90
3		2-Carene	136	C10H16	000554-61-0	87
4		1,3-Cyclohexadiene, 1-methyl-4-(...	136	C10H16	000099-86-5	87
5		Cyclohexene, 1-methyl-4-(1-methy...	136	C10H16	000586-62-9	87



Data Path : Z:\VOASRV\HPCHEM1\MSVOA\_W\DATA\VW100218\  
Data File : VW005784.D  
Acq On : 02 Oct 2018 18:30  
Operator : SY/AP  
Sample : J5180-13RE  
Misc : 3.67G/10ML/MSVOA\_W/SOIL  
ALS Vial : 1 Sample Multiplier: 1

Instrument :  
MSVOA\_W  
ClientSampleId :  
JLC22RE

Quant Method : Z:\VOASRV\HPCHEM1\MSVOA\_W\METHOD\SOM2WLM092818S.M  
Quant Title : VOC Analysis

TIC Library : C:\DATABASE\NIST11.L  
TIC Integration Parameters: LSCINT.P

TIC Top Hit name	RT	EstConc	Units	Response	--Internal Standard--			
					#	RT	Resp	Conc
Cyclohexene, 1-me...	14.01	1.6	ug/L	23710	3	13.57	371774	25.0