

Data Path : Z:\VOASRV\HPCHEM1\MSVOA\_W\DATA\VW100219\  
 Data File : VW013405.D  
 Acq On : 03 Oct 2019 05:03  
 Operator : SY/VA  
 Sample : K5144-01  
 Misc : 5.01G/5ML/MSVOA\_W/SOIL  
 ALS Vial : 37 Sample Multiplier: 1

Instrument :  
 MSVOA\_W  
 ClientSampleId :  
 COMP-1

Quant Time: Oct 03 07:09:00 2019  
 Quant Method : Z:\VOASRV\HPCHEM1\MSVOA\_W\METHOD\82W100119S.M  
 Quant Title : SW846 8260  
 QLast Update : Wed Oct 02 11:49:57 2019  
 Response via : Initial Calibration

Internal Standards	R.T.	QIon	Response	Conc	Units	Dev(Min)
1) Pentafluorobenzene	7.94	168	378784	50.00	ug/l	0.00
34) 1,4-Difluorobenzene	8.84	114	568540	50.00	ug/l	0.00
63) Chlorobenzene-d5	11.63	117	468152	50.00	ug/l	0.00
72) 1,4-Dichlorobenzene-d4	13.56	152	201862	50.00	ug/l	0.00

System Monitoring Compounds	R.T.	QIon	Response	Conc	Units	Dev(Min)
33) 1,2-Dichloroethane-d4	8.30	65	154767	54.72	ug/l	0.00
Spiked Amount				50.000		
			Recovery	=	109.44%	
35) Dibromofluoromethane	7.88	113	156520	52.47	ug/l	0.00
Spiked Amount				50.000		
			Recovery	=	104.94%	
50) Toluene-d8	10.32	98	648798	52.41	ug/l	0.00
Spiked Amount				50.000		
			Recovery	=	104.82%	
62) 4-Bromofluorobenzene	12.62	95	197864	47.86	ug/l	0.00
Spiked Amount				50.000		
			Recovery	=	95.72%	

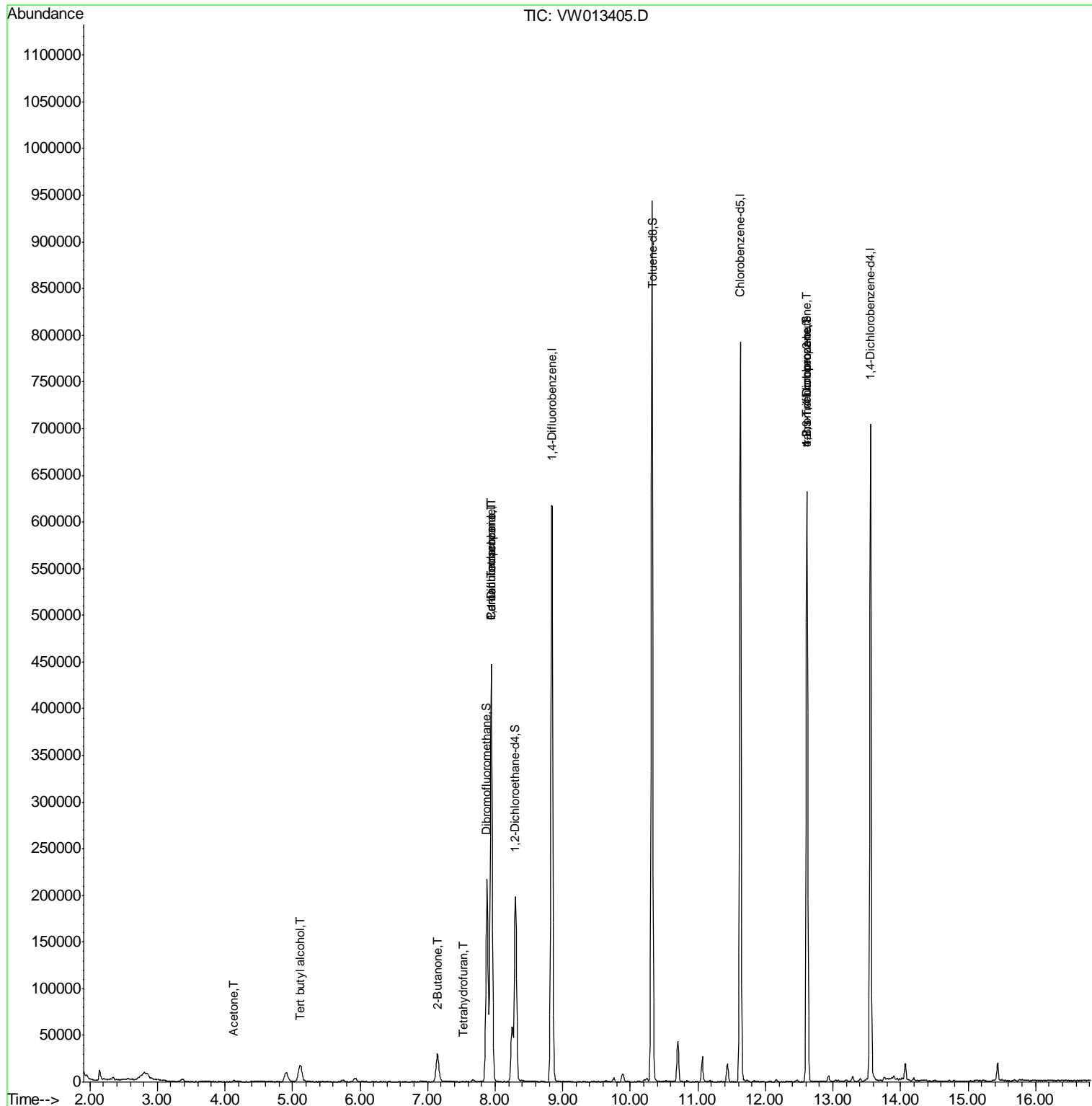
Target Compounds	R.T.	QIon	Response	Conc	Units	Qvalue
11) Tert butyl alcohol	5.10	59	17471	52.661	ug/l #	74
16) Acetone	4.13	43	1097	1.265	ug/l #	57
25) 2-Butanone	7.15	43	1805	1.627	ug/l	92
26) 2,2-Dichloropropane	7.15	77	2105	Below Cal	#	52
29) Tetrahydrofuran	7.54	42	29	9.737	ug/l #	34
36) 1,1-Dichloropropene	7.95	75	24978	4.730	ug/l #	49
38) Carbon Tetrachloride	7.94	117	32502	7.105	ug/l #	17
76) 1,2,3-Trichloropropane	12.62	75	92518	51.568	ug/l #	100
81) trans-1,4-Dichloro-2-buten	12.62	75	92518	104.648	ug/l #	12

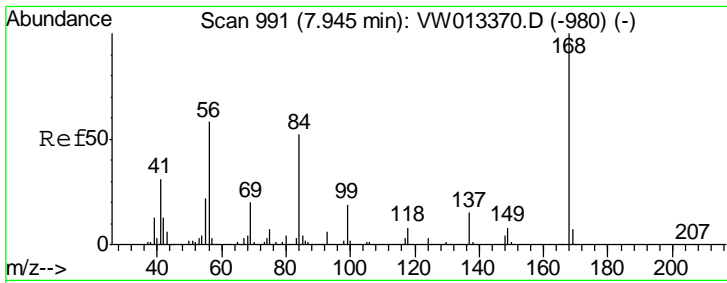
(#) = qualifier out of range (m) = manual integration (+) = signals summed

Data Path : Z:\VOASRV\HPCHEM1\MSVOA\_W\DATA\VW100219\  
 Data File : VW013405.D  
 Acq On : 03 Oct 2019 05:03  
 Operator : SY/VA  
 Sample : K5144-01  
 Misc : 5.01G/5ML/MSVOA\_W/SOIL  
 ALS Vial : 37 Sample Multiplier: 1

Instrument :  
 MSVOA\_W  
 ClientSampled :  
 COMP-1

Quant Time: Oct 03 07:09:00 2019  
 Quant Method : Z:\VOASRV\HPCHEM1\MSVOA\_W\METHOD\82W100119S.M  
 Quant Title : SW846 8260  
 QLast Update : Wed Oct 02 11:49:57 2019  
 Response via : Initial Calibration

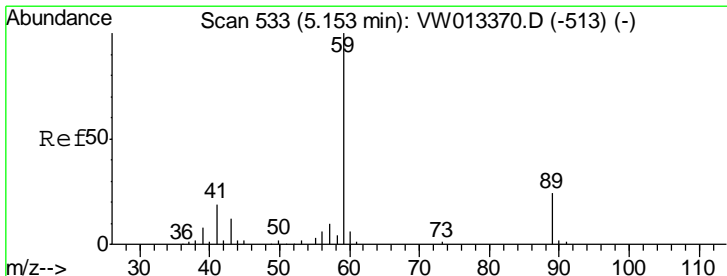
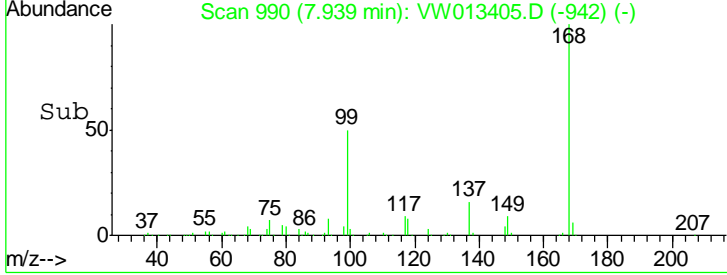
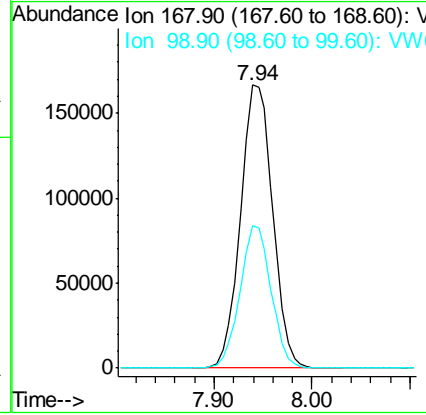
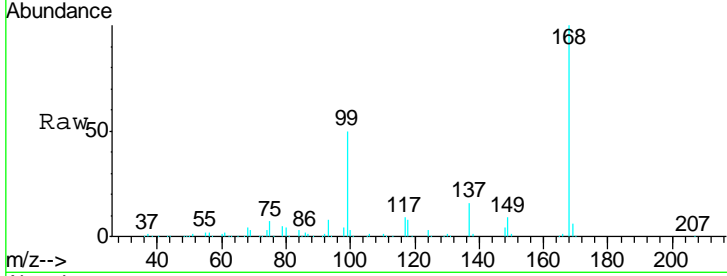




#1  
 Pentafluorobenzene  
 Concen: 50.000 ug/l  
 RT: 7.94 min Scan# 990  
 Delta R.T. -0.01 min  
 Lab File: VW013405.D  
 Acq: 03 Oct 2019 05:03

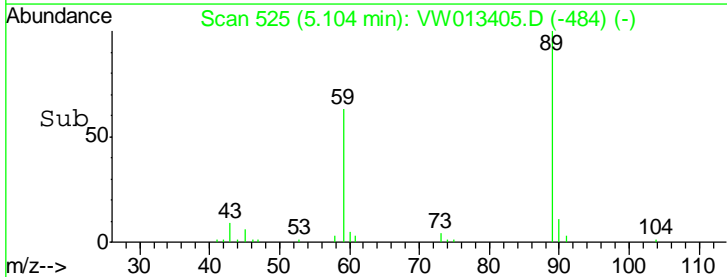
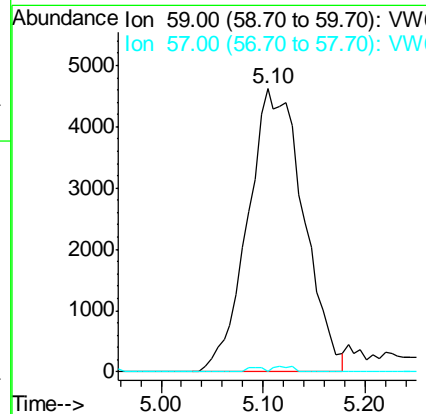
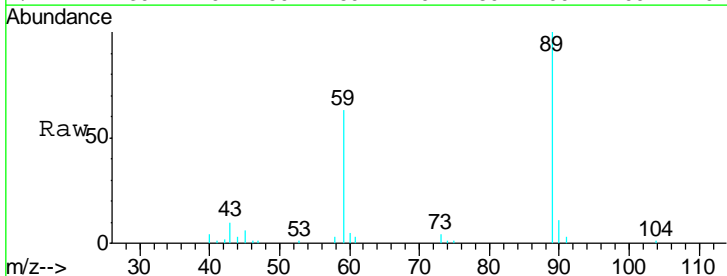
Instrument : MSVOA\_W  
 ClientSampled : COMP-1

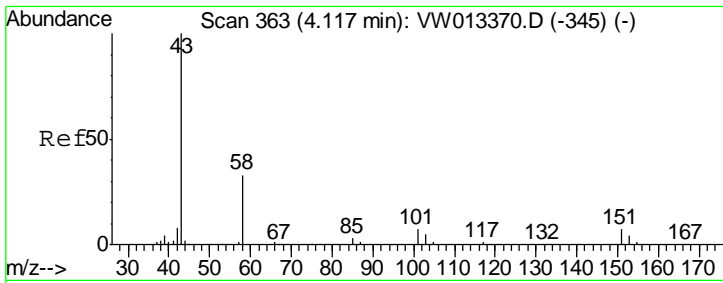
Tgt Ion: 168 Resp: 378784  
 Ion Ratio Lower Upper  
 168 100  
 99 50.2 40.2 60.4



#11  
 Tert butyl alcohol  
 Concen: 52.661 ug/l  
 RT: 5.10 min Scan# 525  
 Delta R.T. -0.05 min  
 Lab File: VW013405.D  
 Acq: 03 Oct 2019 05:03

Tgt Ion: 59 Resp: 17471  
 Ion Ratio Lower Upper  
 59 100  
 57 0.4 8.2 12.2#

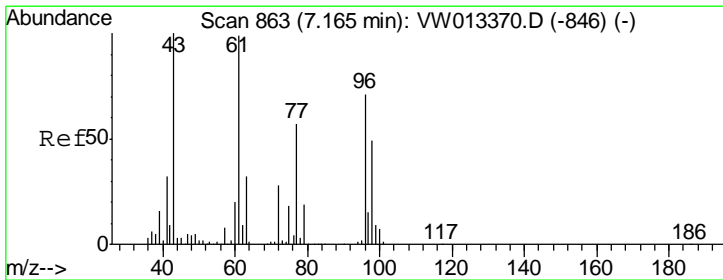
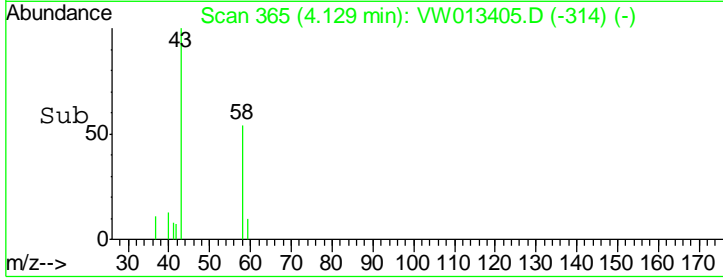
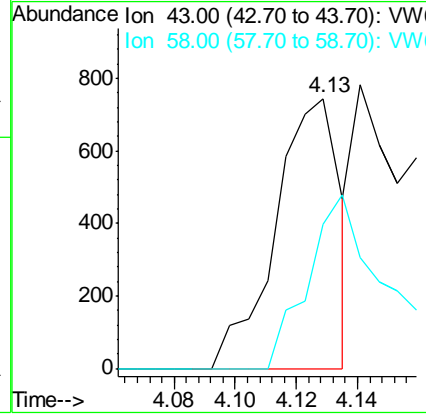
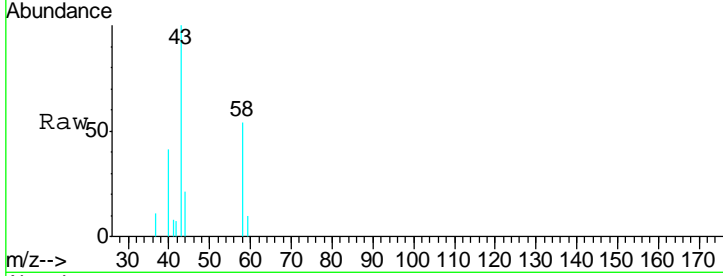




#16  
 Acetone  
 Concen: 1.265 ug/l  
 RT: 4.13 min Scan# 365  
 Delta R.T. 0.01 min  
 Lab File: VW013405.D  
 Acq: 03 Oct 2019 05:03

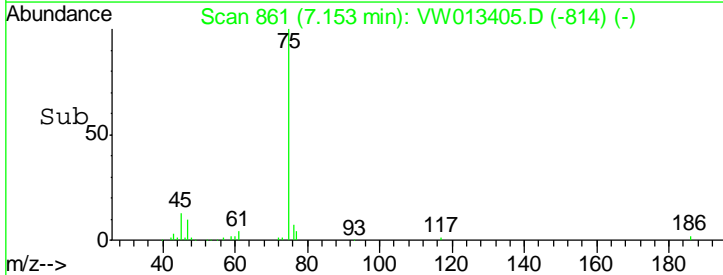
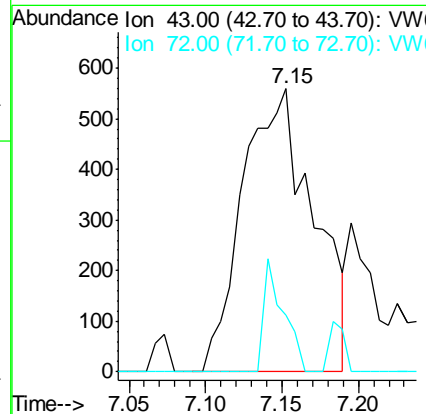
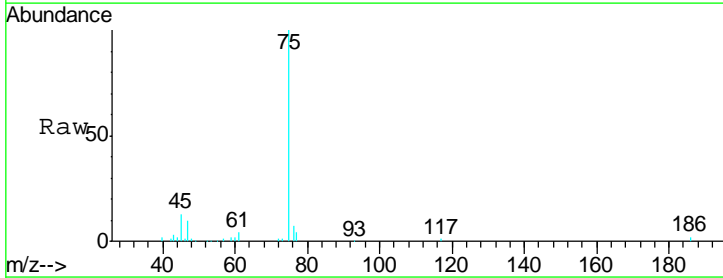
Instrument :  
 MSVOA\_W  
 ClientSampled :  
 COMP-1

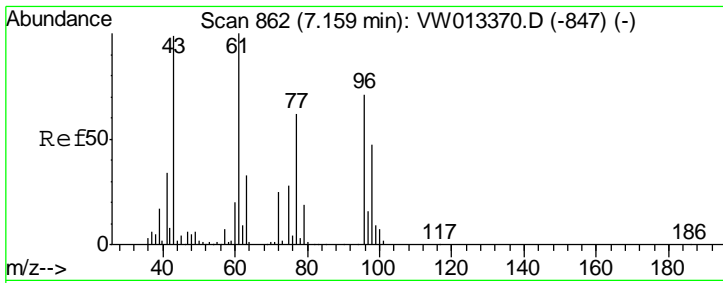
Tgt Ion: 43 Resp: 1097  
 Ion Ratio Lower Upper  
 43 100  
 58 53.6 24.1 36.1#



#25  
 2-Butanone  
 Concen: 1.627 ug/l  
 RT: 7.15 min Scan# 861  
 Delta R.T. -0.01 min  
 Lab File: VW013405.D  
 Acq: 03 Oct 2019 05:03

Tgt Ion: 43 Resp: 1805  
 Ion Ratio Lower Upper  
 43 100  
 72 20.2 19.4 29.0

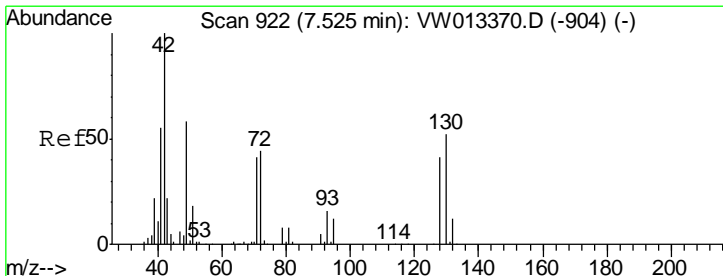
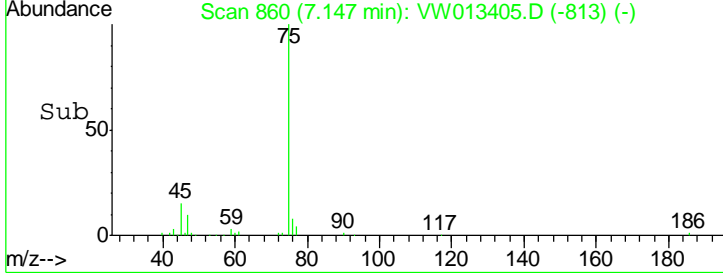
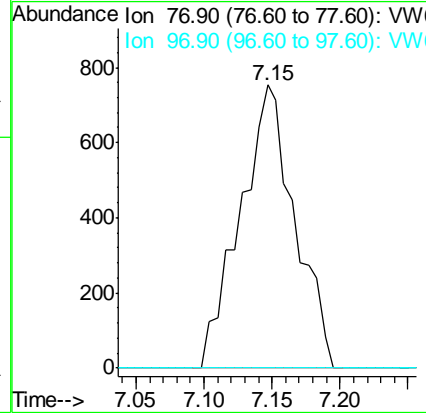
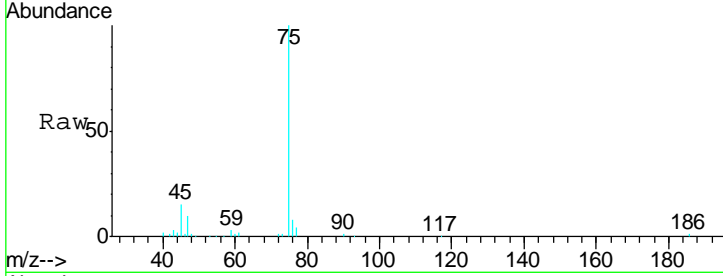




#26  
 2,2-Dichloropropane  
 Concen: Below Cal  
 RT: 7.15 min Scan# 860  
 Delta R.T. -0.01 min  
 Lab File: VW013405.D  
 Acq: 03 Oct 2019 05:03

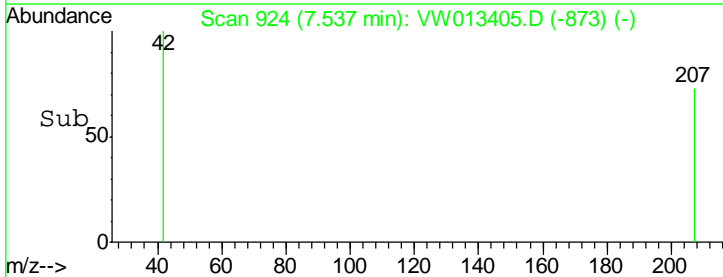
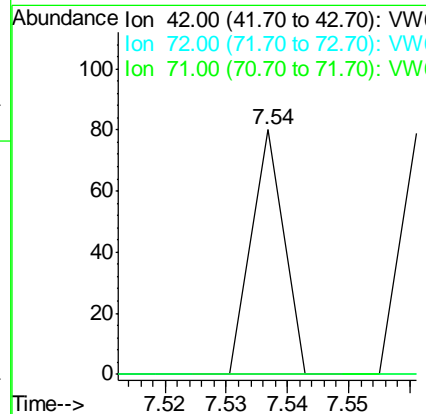
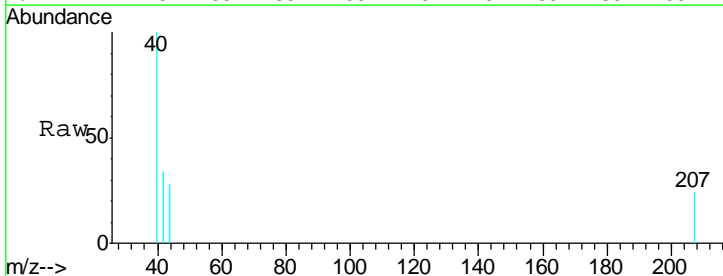
Instrument :  
 MSVOA\_W  
 ClientSampled :  
 COMP-1

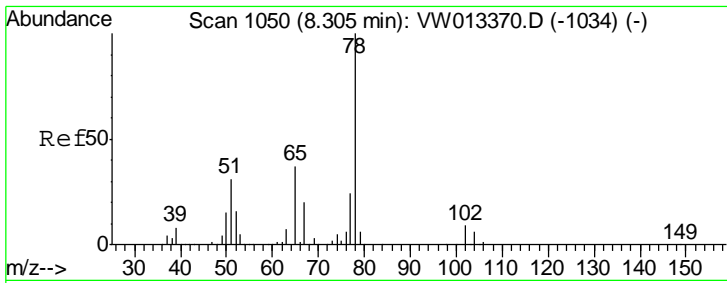
Tgt Ion: 77 Resp: 2105  
 Ion Ratio Lower Upper  
 77 100  
 97 0.0 11.8 35.4#



#29  
 Tetrahydrofuran  
 Concen: 9.737 ug/l  
 RT: 7.54 min Scan# 924  
 Delta R.T. 0.01 min  
 Lab File: VW013405.D  
 Acq: 03 Oct 2019 05:03

Tgt Ion: 42 Resp: 29  
 Ion Ratio Lower Upper  
 42 100  
 72 0.0 33.9 50.9#  
 71 0.0 31.9 47.9#

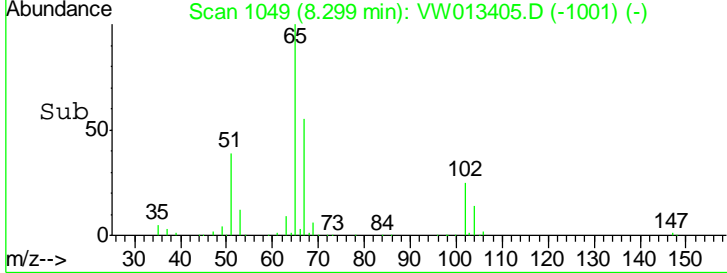
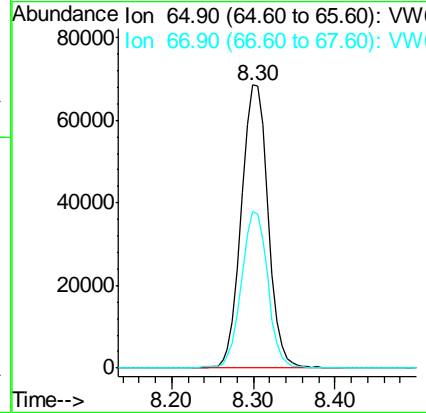
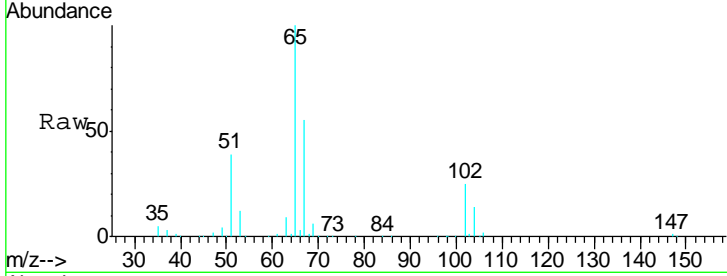




#33  
 1,2-Dichloroethane-d4  
 Concen: 54.721 ug/l  
 RT: 8.30 min Scan# 1049  
 Delta R.T. -0.01 min  
 Lab File: VW013405.D  
 Acq: 03 Oct 2019 05:03

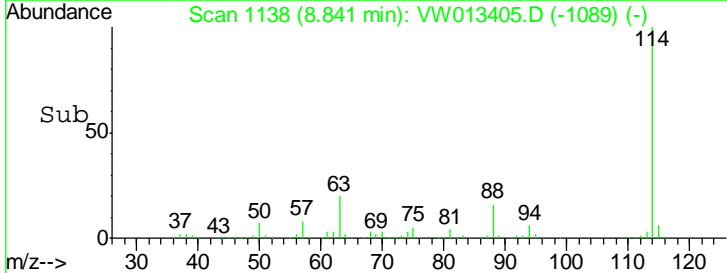
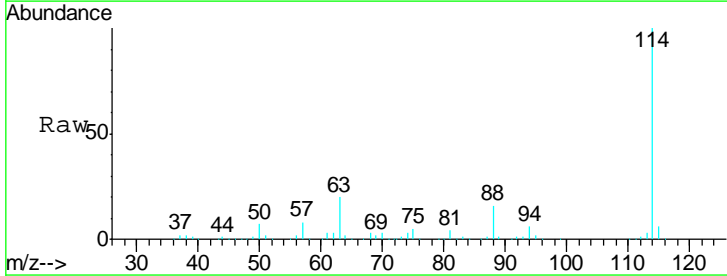
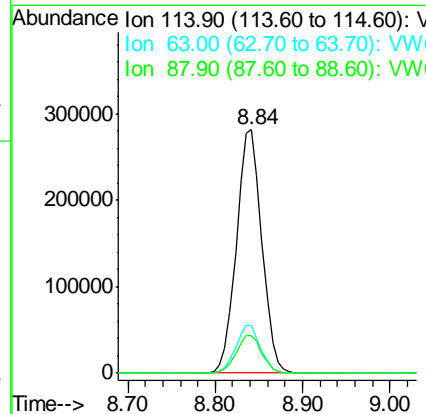
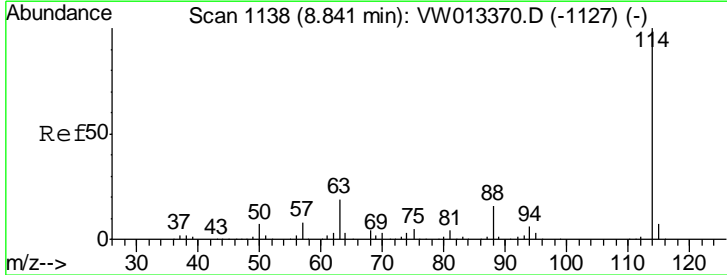
**Instrument :**  
 MSVOA\_W  
**ClientSampled :**  
 COMP-1

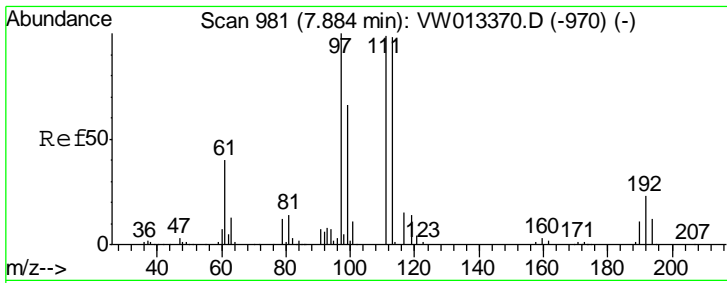
Tgt Ion	Resp	Lower	Upper
65	154767		
65	100		
67	54.8	0.0	106.2



#34  
 1,4-Difluorobenzene  
 Concen: 50.000 ug/l  
 RT: 8.84 min Scan# 1138  
 Delta R.T. -0.00 min  
 Lab File: VW013405.D  
 Acq: 03 Oct 2019 05:03

Tgt Ion	Resp	Lower	Upper
114	568540		
114	100		
63	19.7	0.0	41.4
88	15.6	0.0	32.0

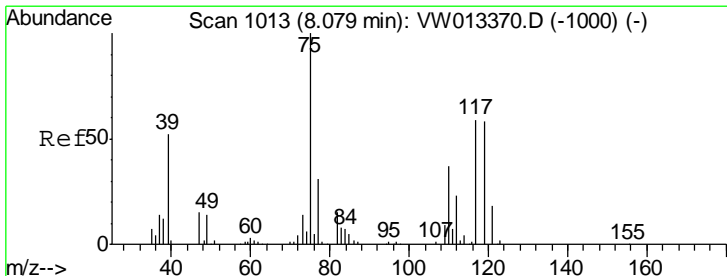
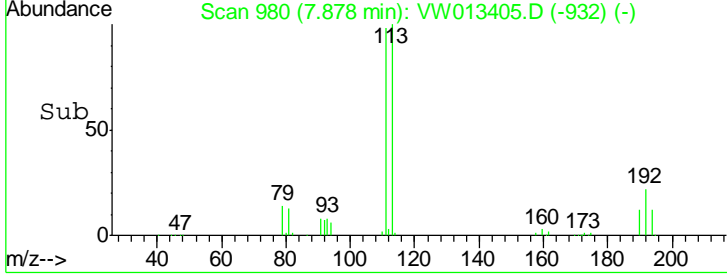
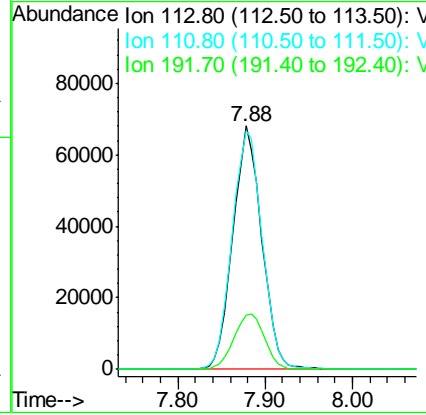
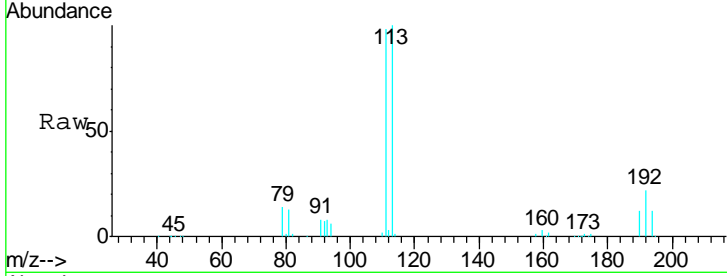




#35  
 Dibromofluoromethane  
 Concen: 52.466 ug/l  
 RT: 7.88 min Scan# 980  
 Delta R.T. -0.01 min  
 Lab File: VW013405.D  
 Acq: 03 Oct 2019 05:03

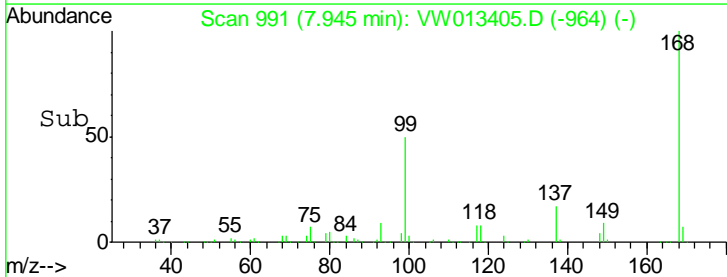
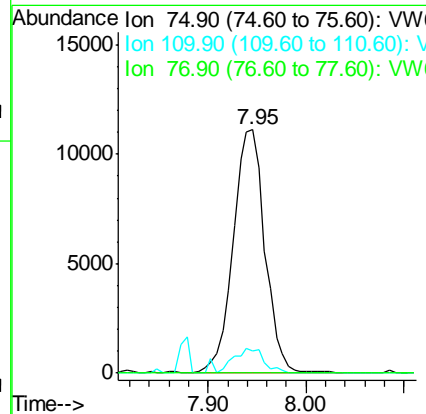
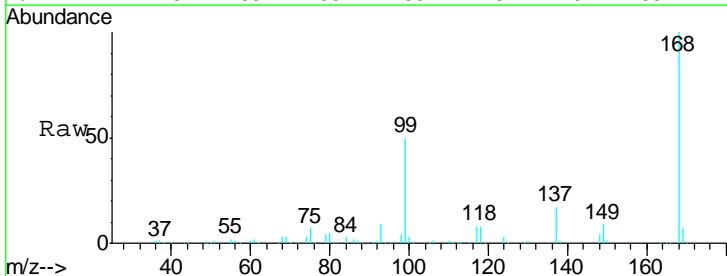
Instrument :  
 MSVOA\_W  
 ClientSampled :  
 COMP-1

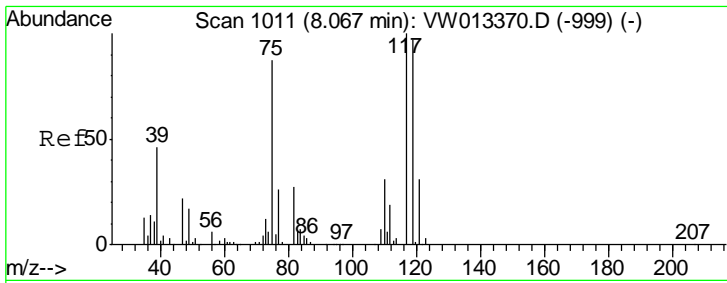
Tgt Ion	Resp	Lower	Upper
113	156520		
111	102.1	81.9	122.9
192	24.1	19.1	28.7



#36  
 1,1-Dichloropropene  
 Concen: 4.730 ug/l  
 RT: 7.95 min Scan# 991  
 Delta R.T. -0.13 min  
 Lab File: VW013405.D  
 Acq: 03 Oct 2019 05:03

Tgt Ion	Resp	Lower	Upper
75	24978		
110	9.6	18.1	54.3#
77	0.0	25.8	38.6#

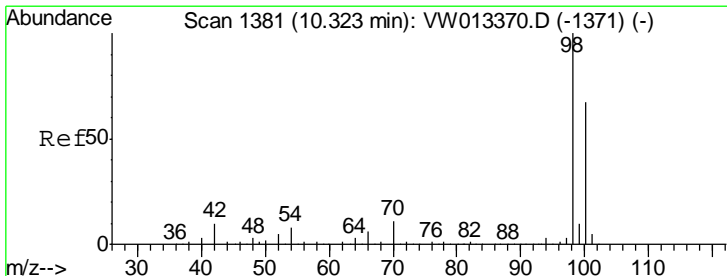
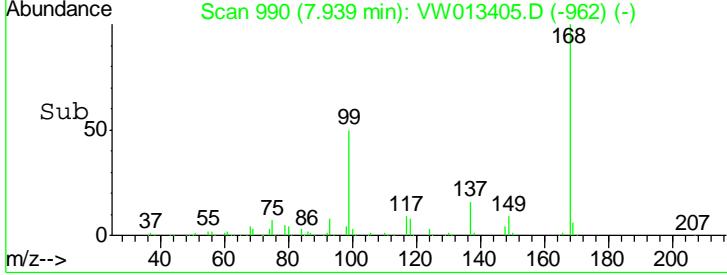
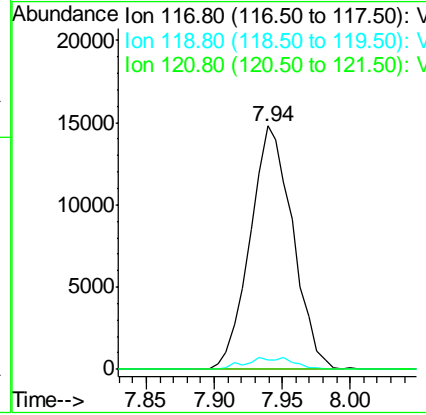
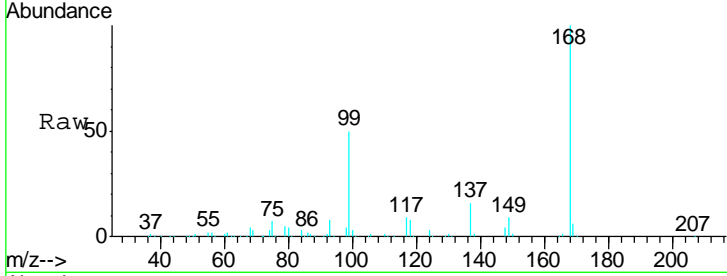




#38  
 Carbon Tetrachloride  
 Concen: 7.105 ug/l  
 RT: 7.94 min Scan# 990  
 Delta R.T. -0.13 min  
 Lab File: VW013405.D  
 Acq: 03 Oct 2019 05:03

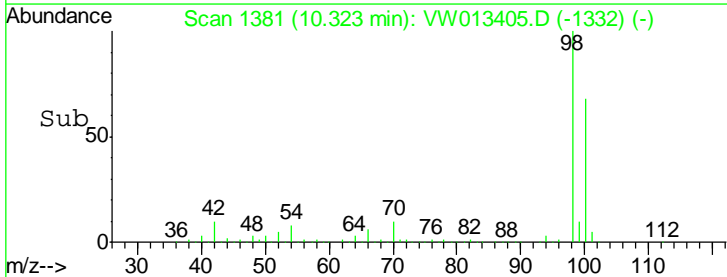
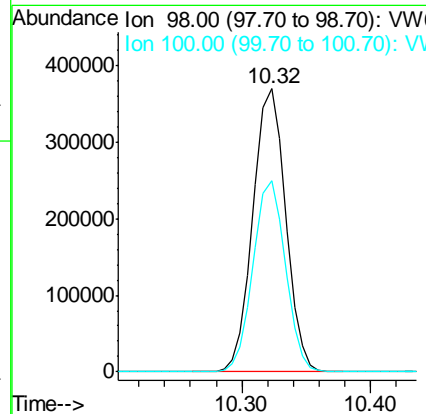
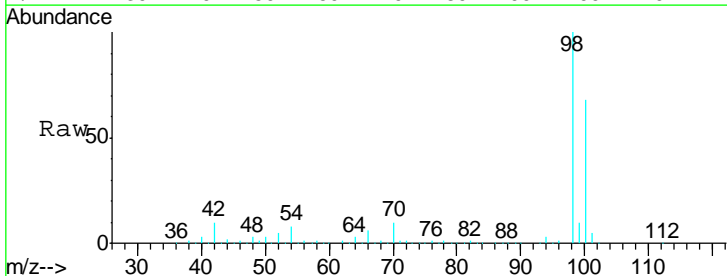
**Instrument :**  
 MSVOA\_W  
**ClientSampled :**  
 COMP-1

Tgt Ion	Resp	Lower	Upper
117	100		
119	3.8	73.5	110.3#
121	0.0	25.0	37.6#

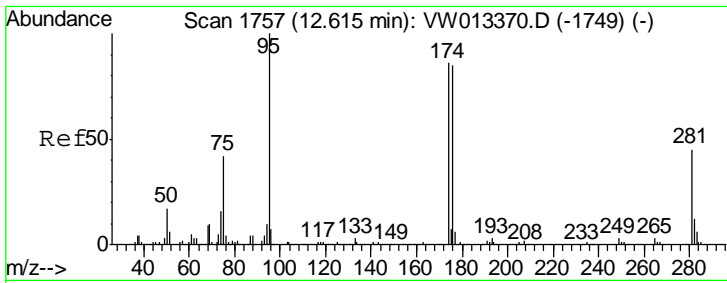


#50  
 Toluene-d8  
 Concen: 52.407 ug/l  
 RT: 10.32 min Scan# 1381  
 Delta R.T. -0.00 min  
 Lab File: VW013405.D  
 Acq: 03 Oct 2019 05:03

Tgt Ion	Resp	Lower	Upper
98	100		
100	66.8	52.9	79.3





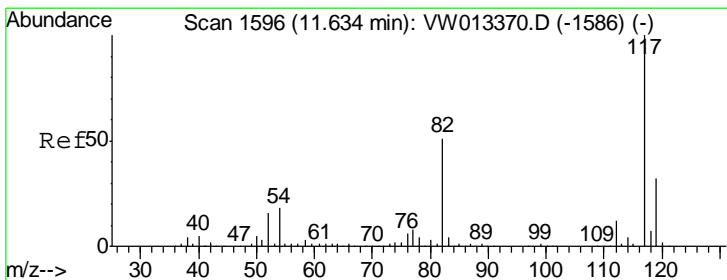
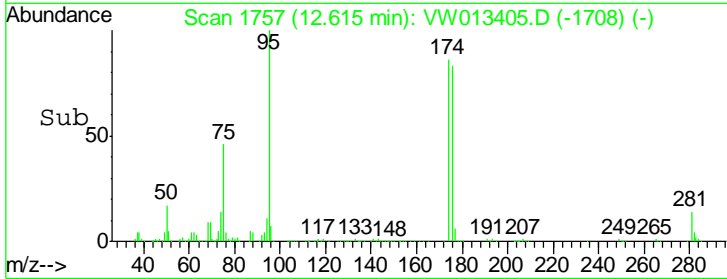
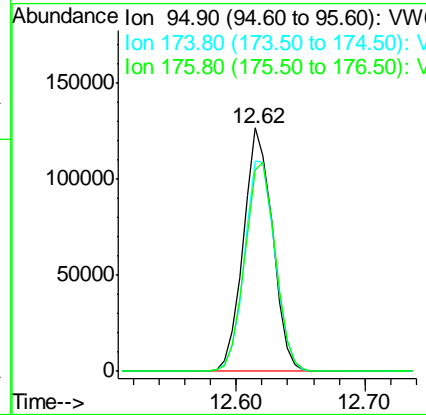
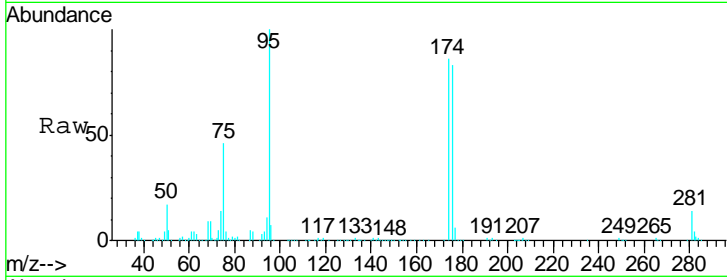


#62  
 4-Bromofluorobenzene  
 Concen: 47.861 ug/l  
 RT: 12.62 min Scan# 1757  
 Delta R.T. -0.00 min  
 Lab File: VW013405.D  
 Acq: 03 Oct 2019 05:03

Instrument :  
 MSVOA\_W  
 ClientSampled :  
 COMP-1

Tgt Ion: 95 Resp: 197864

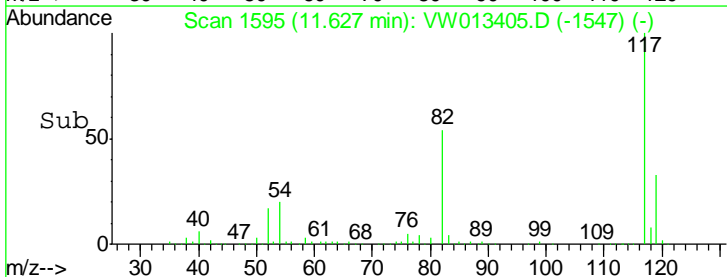
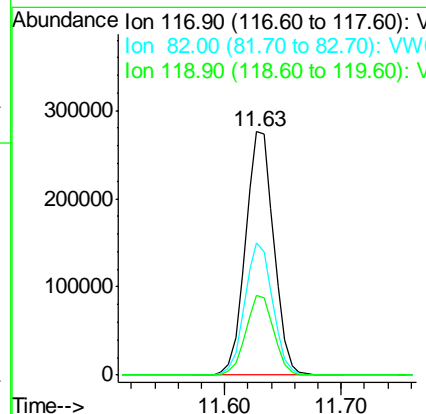
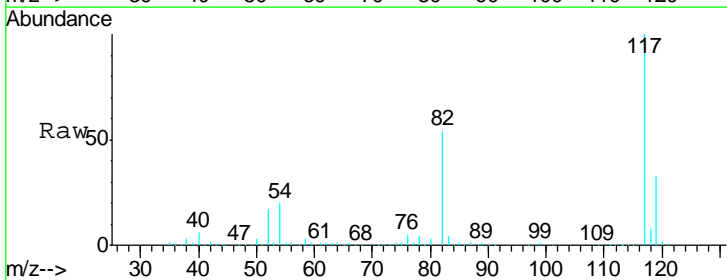
Ion	Ratio	Lower	Upper
95	100		
174	90.4	0.0	178.4
176	89.7	0.0	172.2

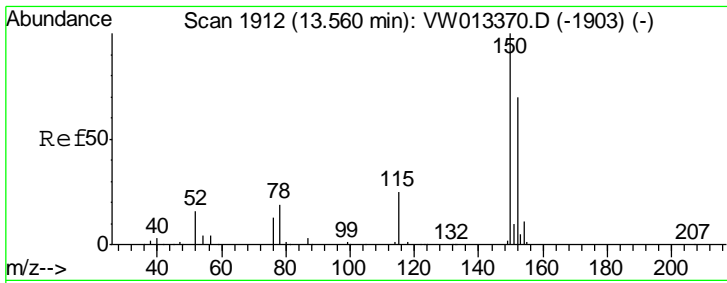


#63  
 Chlorobenzene-d5  
 Concen: 50.000 ug/l  
 RT: 11.63 min Scan# 1595  
 Delta R.T. -0.01 min  
 Lab File: VW013405.D  
 Acq: 03 Oct 2019 05:03

Tgt Ion: 117 Resp: 468152

Ion	Ratio	Lower	Upper
117	100		
82	54.1	45.9	68.9
119	32.5	26.2	39.2

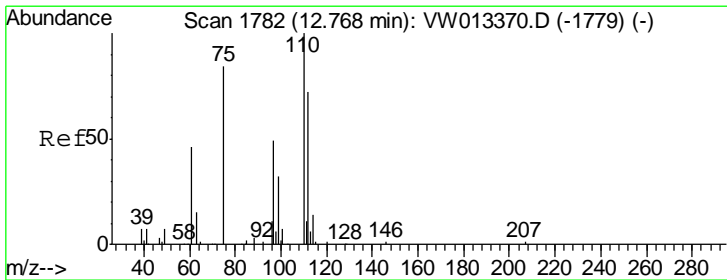
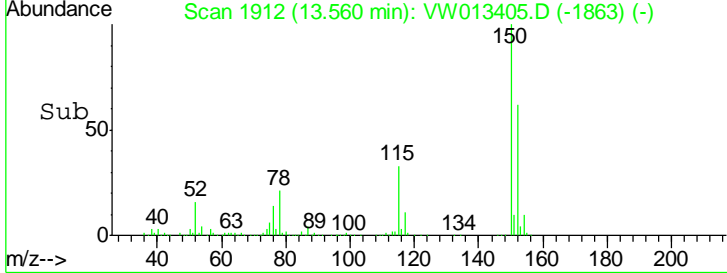
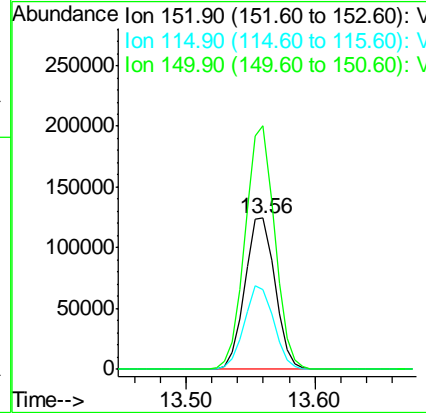
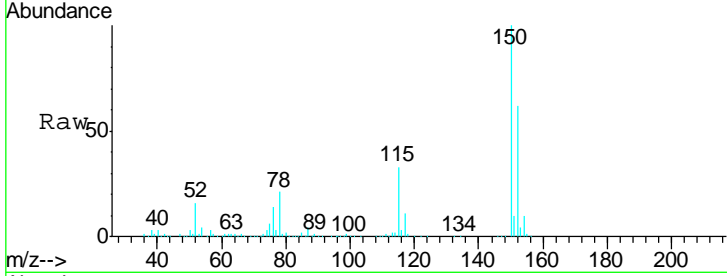




#72  
 1,4-Dichlorobenzene-d4  
 Concen: 50.000 ug/l  
 RT: 13.56 min Scan# 1912  
 Delta R.T. -0.00 min  
 Lab File: VW013405.D  
 Acq: 03 Oct 2019 05:03

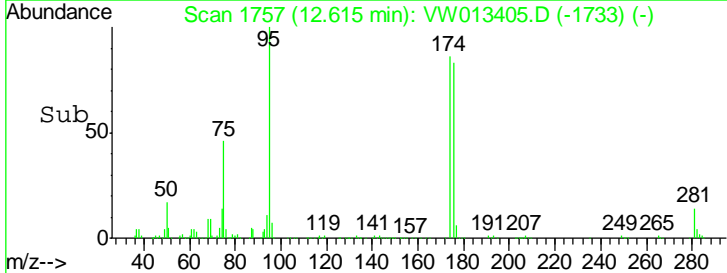
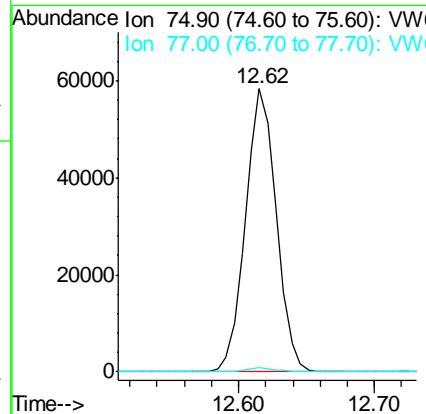
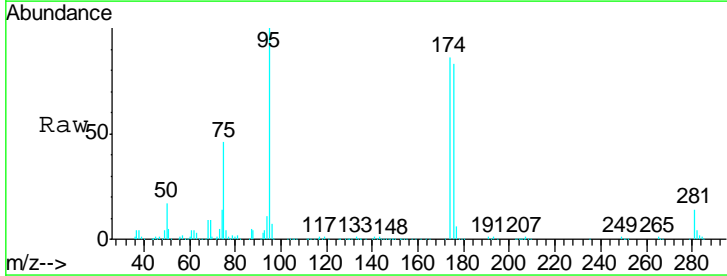
Instrument : MSVOA\_W  
 ClientSampled : COMP-1

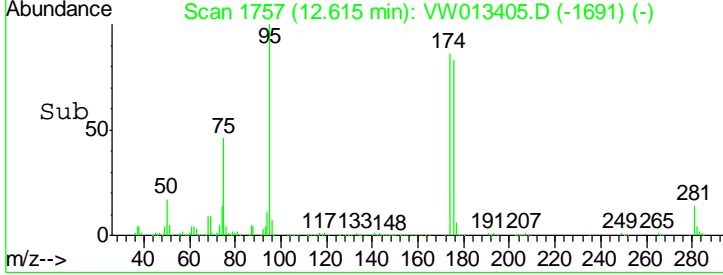
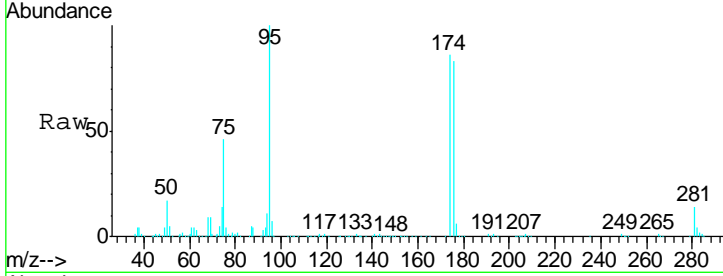
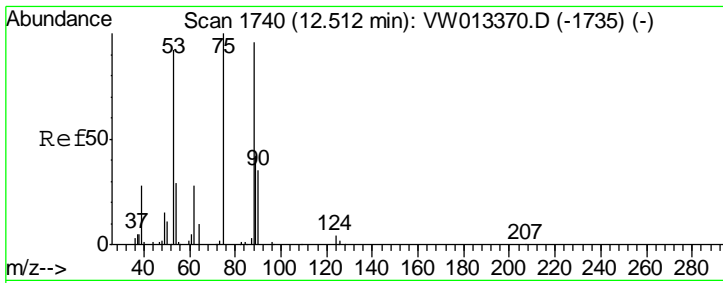
Tgt Ion	Resp	Lower	Upper
152	100		
115	54.0	27.3	81.9
150	157.2	0.0	349.0



#76  
 1,2,3-Trichloropropane  
 Concen: 51.568 ug/l  
 RT: 12.62 min Scan# 1757  
 Delta R.T. -0.15 min  
 Lab File: VW013405.D  
 Acq: 03 Oct 2019 05:03

Tgt Ion	Resp	Lower	Upper
75	100		
77	1.4	0.0	0.0#





#81  
 trans-1,4-Dichloro-2-butene  
 Concen: 104.648 ug/l  
 RT: 12.62 min Scan# 1757  
 Delta R.T. 0.10 min  
 Lab File: VW013405.D  
 Acq: 03 Oct 2019 05:03

Instrument : MSVOA\_W  
 ClientSampleId : COMP-1

Tgt Ion	Resp	Lower	Upper
75	100		
53	0.0	76.6	114.8#
89	0.1	33.5	50.3#

