

Data Path : Z:\VOASRV\HPCHEM1\MSVOA W\DATA\VW100219\
 Data File : VW013385.D
 Acq On : 02 Oct 2019 18:12
 Operator : SY/VA
 Sample : K5133-02
 Misc : 5.06G/5ML/MSVOA W/SOIL
 ALS Vial : 12 Sample Multiplier: 1

Instrument :
 MSVOA_W
 ClientSampleId :
 S-1A

Quant Time: Oct 03 07:28:37 2019
 Quant Method : Z:\VOASRV\HPCHEM1\MSVOA_W\METHOD\82W100119S.M
 Quant Title : SW846 8260
 QLast Update : Wed Oct 02 11:49:57 2019
 Response via : Initial Calibration

Internal Standards	R.T.	QIon	Response	Conc	Units	Dev(Min)
1) Pentafluorobenzene	7.95	168	315992	50.00	ug/l	0.00
34) 1,4-Difluorobenzene	8.84	114	470259	50.00	ug/l	0.00
63) Chlorobenzene-d5	11.63	117	411577	50.00	ug/l	0.00
72) 1,4-Dichlorobenzene-d4	13.56	152	187666	50.00	ug/l	0.00
System Monitoring Compounds						
33) 1,2-Dichloroethane-d4	8.31	65	136576	57.89	ug/l	0.00
Spiked Amount				50.000		
				Recovery	=	115.78%
35) Dibromofluoromethane	7.88	113	133592	54.14	ug/l	0.00
Spiked Amount				50.000		
				Recovery	=	108.28%
50) Toluene-d8	10.32	98	548690	53.58	ug/l	0.00
Spiked Amount				50.000		
				Recovery	=	107.16%
62) 4-Bromofluorobenzene	12.62	95	180054	52.66	ug/l	0.00
Spiked Amount				50.000		
				Recovery	=	105.32%

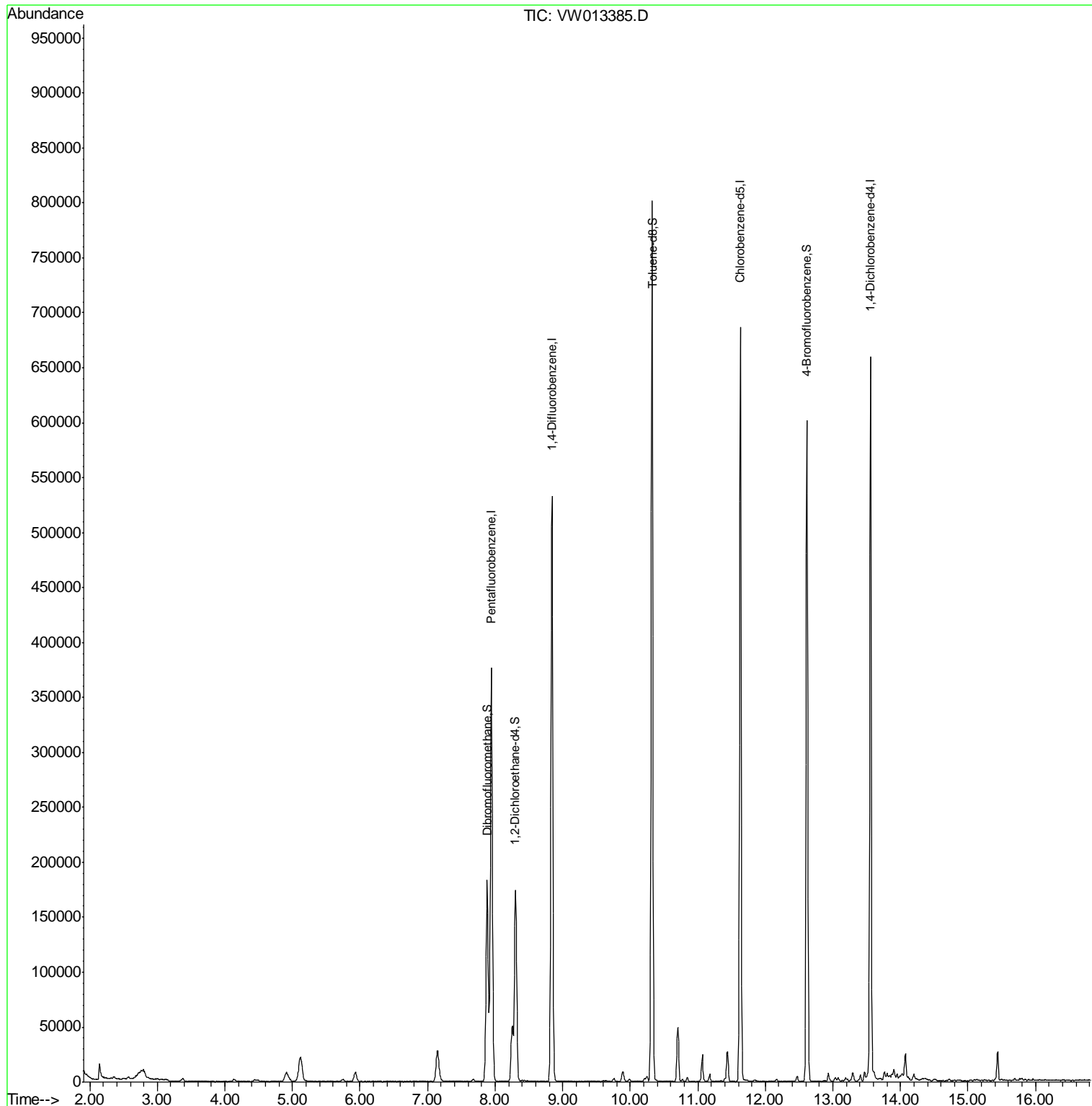
Target Compounds Qvalue

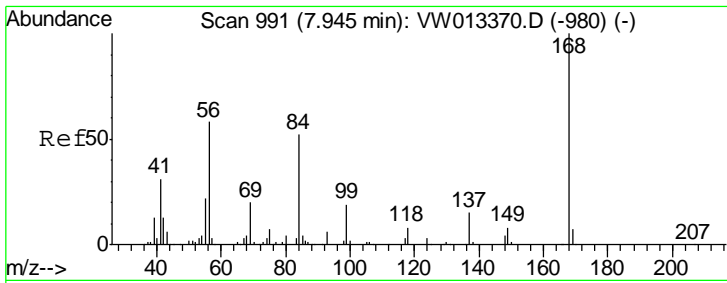
(#) = qualifier out of range (m) = manual integration (+) = signals summed

Data Path : Z:\VOASRV\HPCHEM1\MSVOA W\DATA\VW100219\
 Data File : VW013385.D
 Acq On : 02 Oct 2019 18:12
 Operator : SY/VA
 Sample : K5133-02
 Misc : 5.06G/5ML/MSVOA W/SOIL
 ALS Vial : 12 Sample Multiplier: 1

Instrument :
 MSVOA_W
 ClientSampleId :
 S-1A

Quant Time: Oct 03 07:28:37 2019
 Quant Method : Z:\VOASRV\HPCHEM1\MSVOA_W\METHOD\82W100119S.M
 Quant Title : SW846 8260
 QLast Update : Wed Oct 02 11:49:57 2019
 Response via : Initial Calibration

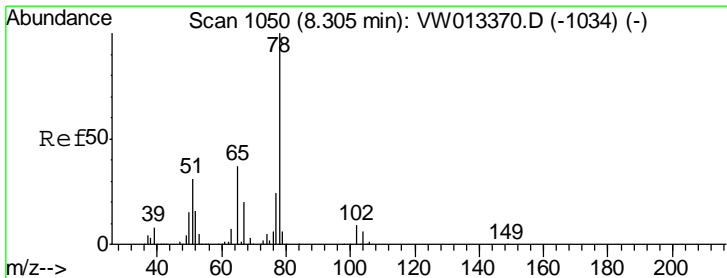
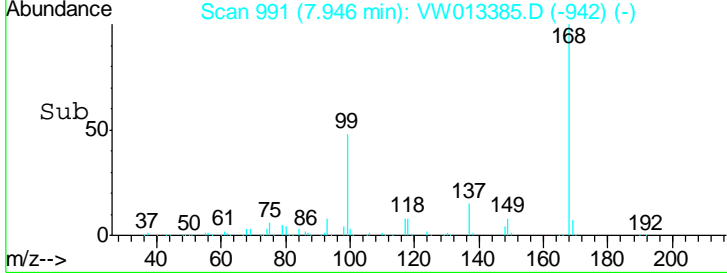
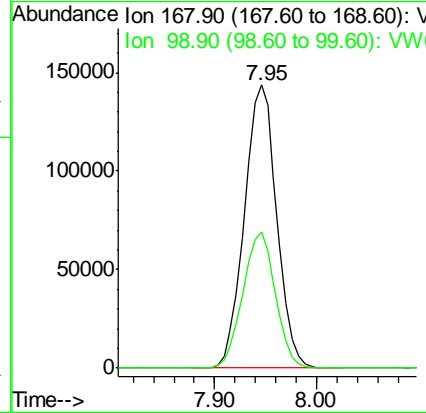
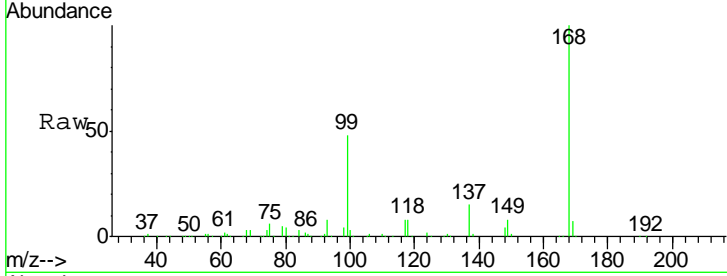




#1
 Pentafluorobenzene
 Concen: 50.000 ug/l
 RT: 7.95 min Scan# 991
 Delta R.T. 0.00 min
 Lab File: VW013385.D
 Acq: 02 Oct 2019 18:12

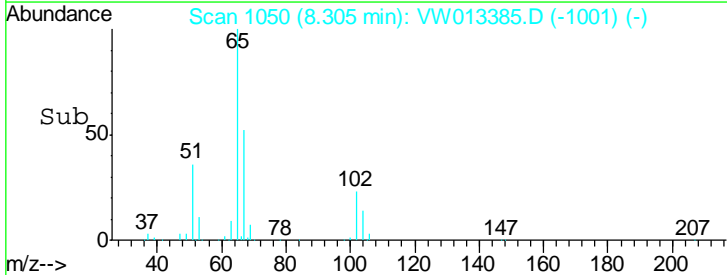
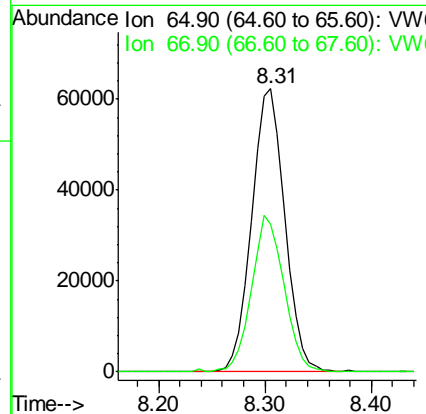
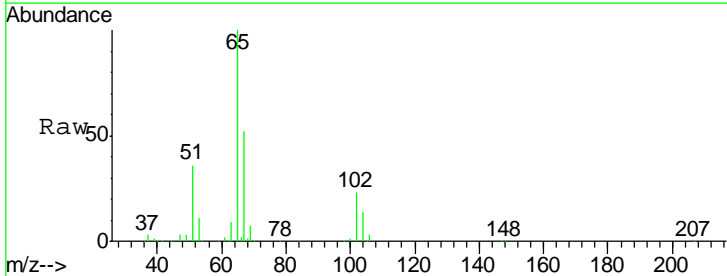
Instrument :
 MSVOA_W
 ClientSampled :
 S-1A

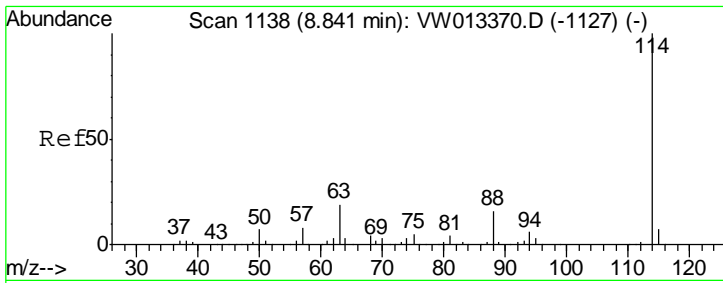
Tgt Ion: 168 Resp: 315992
 Ion Ratio Lower Upper
 168 100
 99 48.0 40.2 60.4



#33
 1,2-Dichloroethane-d4
 Concen: 57.885 ug/l
 RT: 8.31 min Scan# 1050
 Delta R.T. 0.00 min
 Lab File: VW013385.D
 Acq: 02 Oct 2019 18:12

Tgt Ion: 65 Resp: 136576
 Ion Ratio Lower Upper
 65 100
 67 54.0 0.0 106.2

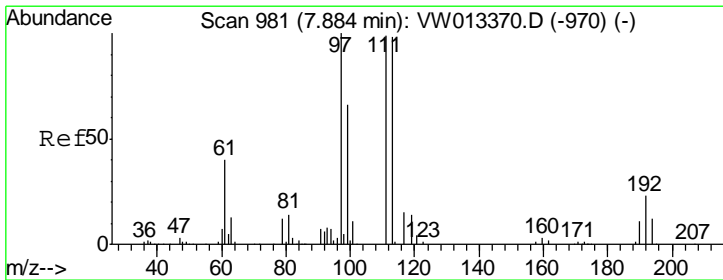
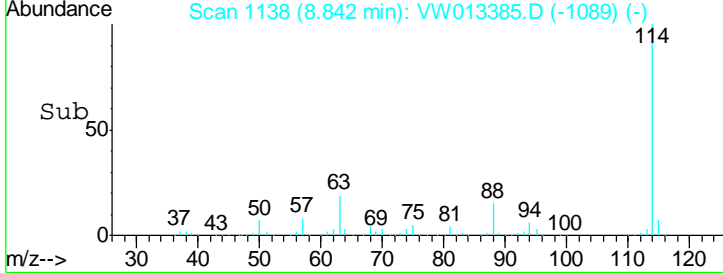
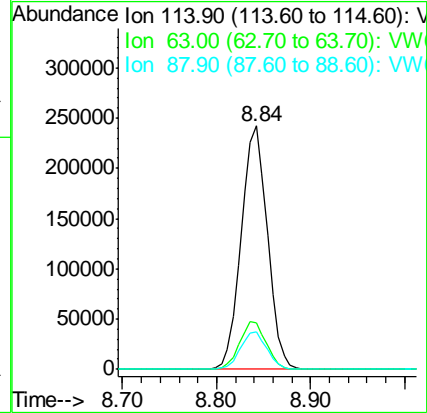
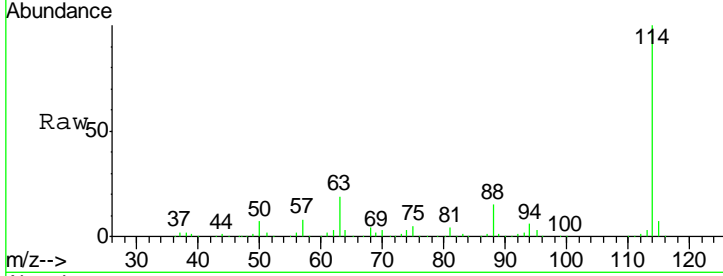




#34
 1,4-Difluorobenzene
 Concen: 50.000 ug/l
 RT: 8.84 min Scan# 1138
 Delta R.T. 0.00 min
 Lab File: VW013385.D
 Acq: 02 Oct 2019 18:12

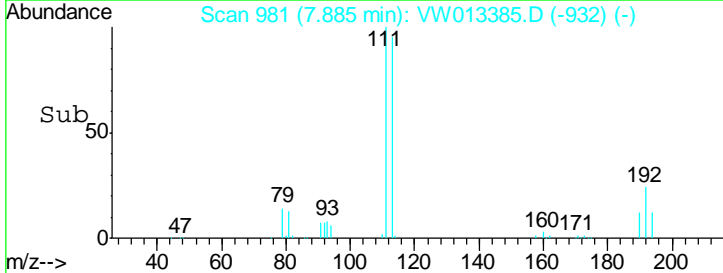
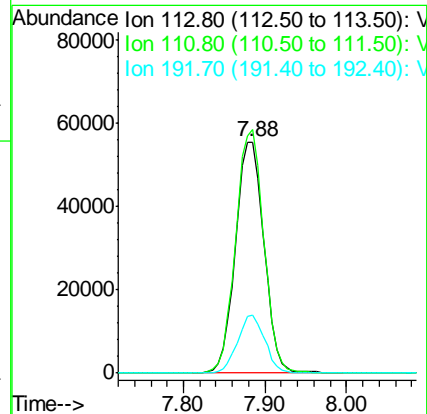
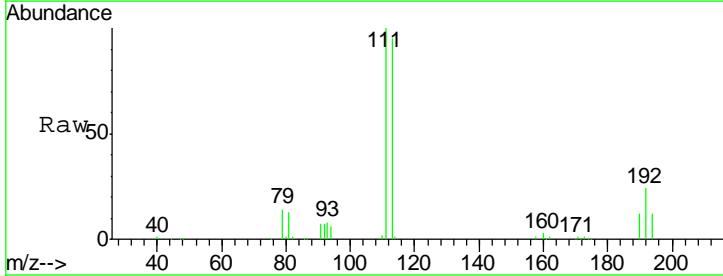
Instrument :
 MSVOA_W
 ClientSampled :
 S-1A

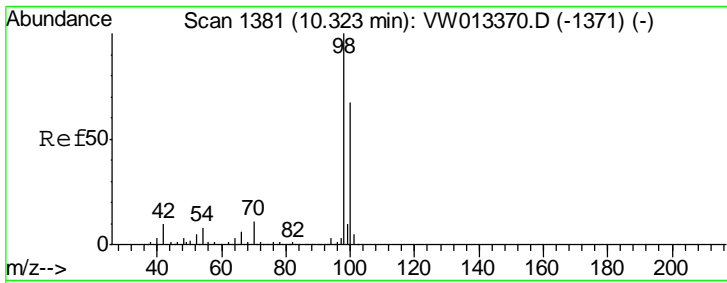
Tgt Ion	Resp	Lower	Upper
114	100		
63	18.9	0.0	41.4
88	15.3	0.0	32.0



#35
 Dibromofluoromethane
 Concen: 54.139 ug/l
 RT: 7.88 min Scan# 981
 Delta R.T. 0.00 min
 Lab File: VW013385.D
 Acq: 02 Oct 2019 18:12

Tgt Ion	Resp	Lower	Upper
113	100		
111	103.8	81.9	122.9
192	23.9	19.1	28.7

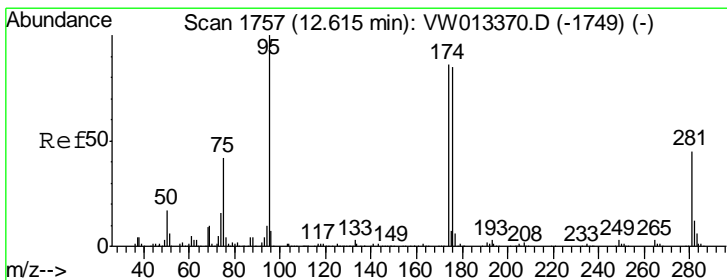
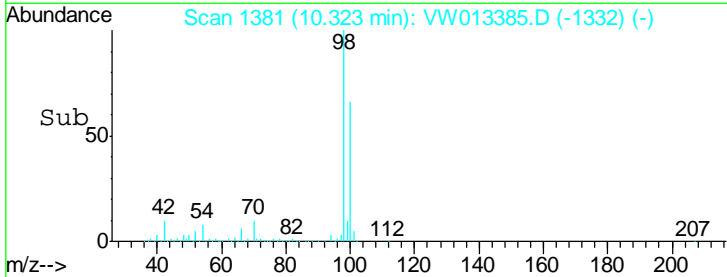
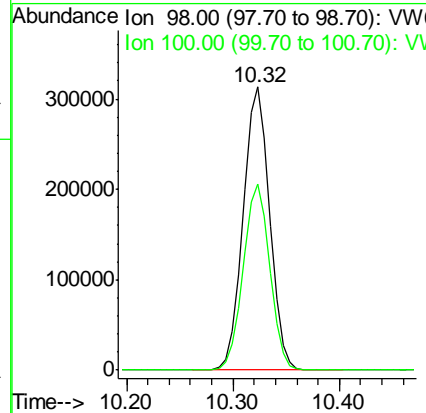
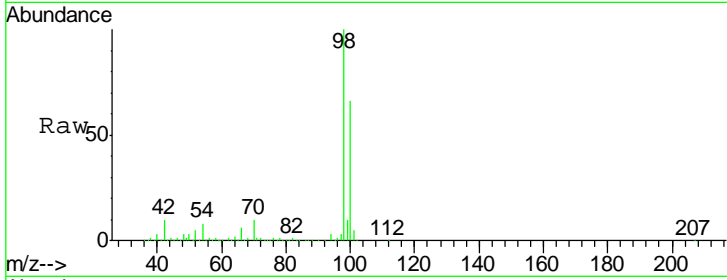




#50
 Toluene-d8
 Concen: 53.583 ug/l
 RT: 10.32 min Scan# 1381
 Delta R.T. 0.00 min
 Lab File: VW013385.D
 Acq: 02 Oct 2019 18:12

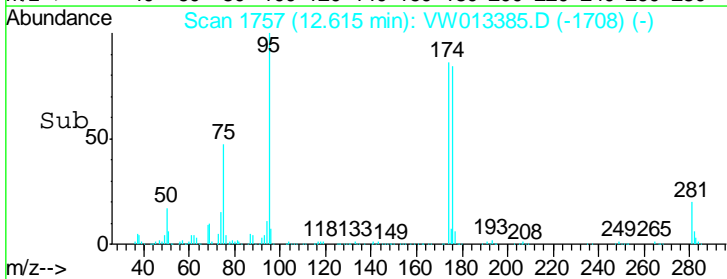
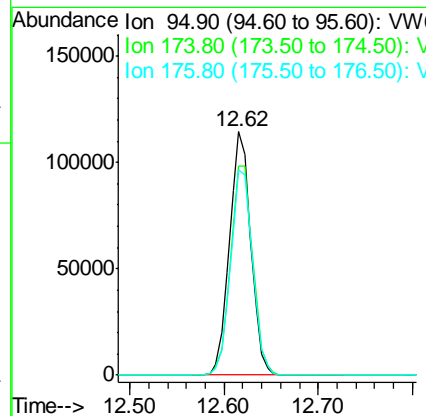
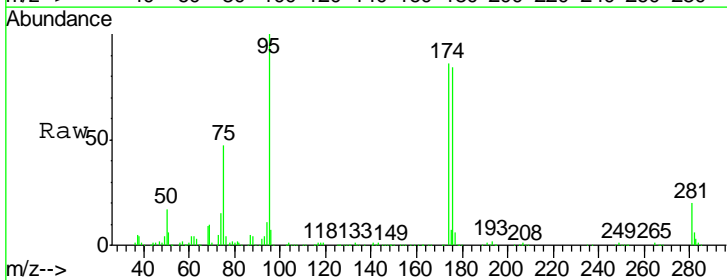
Instrument :
 MSVOA_W
 ClientSampled :
 S-1A

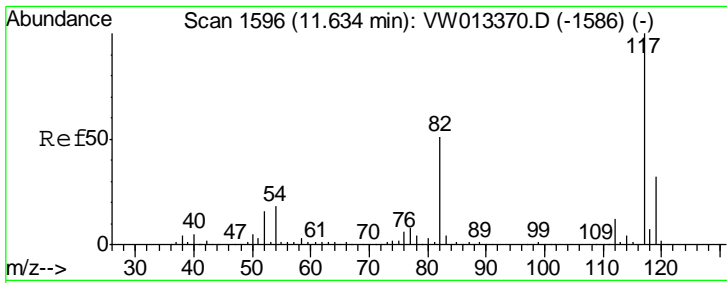
Tgt Ion	Resp	Lower	Upper
98	548690		
100	100	65.8	79.3



#62
 4-Bromofluorobenzene
 Concen: 52.655 ug/l
 RT: 12.62 min Scan# 1757
 Delta R.T. 0.00 min
 Lab File: VW013385.D
 Acq: 02 Oct 2019 18:12

Tgt Ion	Resp	Lower	Upper
95	180054		
174	100	90.0	178.4
176	100	86.9	172.2

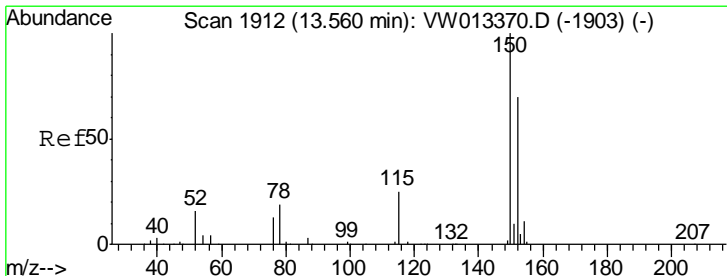
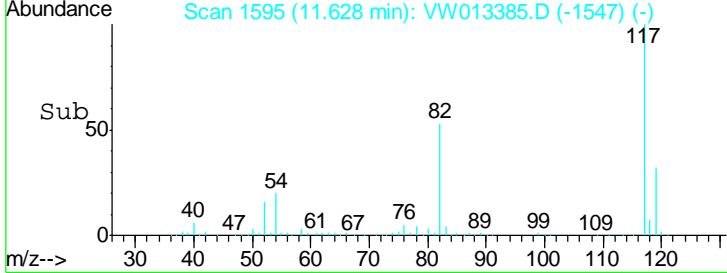
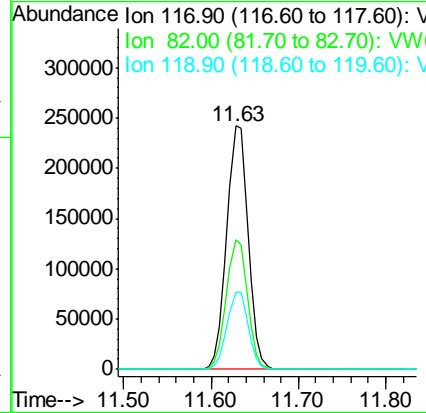
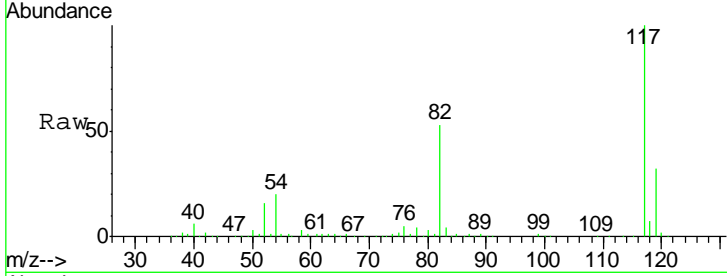




#63
 Chlorobenzene-d5
 Concen: 50.000 ug/l
 RT: 11.63 min Scan# 1595
 Delta R.T. -0.01 min
 Lab File: VW013385.D
 Acq: 02 Oct 2019 18:12

Instrument :
 MSVOA_W
 ClientSampled :
 S-1A

Tgt Ion	Resp	Lower	Upper
117	411577		
82	53.2	45.9	68.9
119	31.6	26.2	39.2



#72
 1,4-Dichlorobenzene-d4
 Concen: 50.000 ug/l
 RT: 13.56 min Scan# 1912
 Delta R.T. 0.00 min
 Lab File: VW013385.D
 Acq: 02 Oct 2019 18:12

Tgt Ion	Resp	Lower	Upper
152	187666		
152	100		
115	53.1	27.3	81.9
150	156.4	0.0	349.0

