

Data Path : Z:\VOASRV\HPCHEM1\MSVOA W\DATA\VW100219\
 Data File : VW013388.D
 Acq On : 02 Oct 2019 19:30
 Operator : SY/VA
 Sample : K5127-02
 Misc : 5.00G/5ML/MSVOA W/SOIL
 ALS Vial : 15 Sample Multiplier: 1

Instrument :
 MSVOA_W
 ClientSampleId :
 20190762-SS-COMPOSITE-2

Quant Time: Oct 03 07:38:39 2019
 Quant Method : Z:\VOASRV\HPCHEM1\MSVOA_W\METHOD\82W100119S.M
 Quant Title : SW846 8260
 QLast Update : Wed Oct 02 11:49:57 2019
 Response via : Initial Calibration

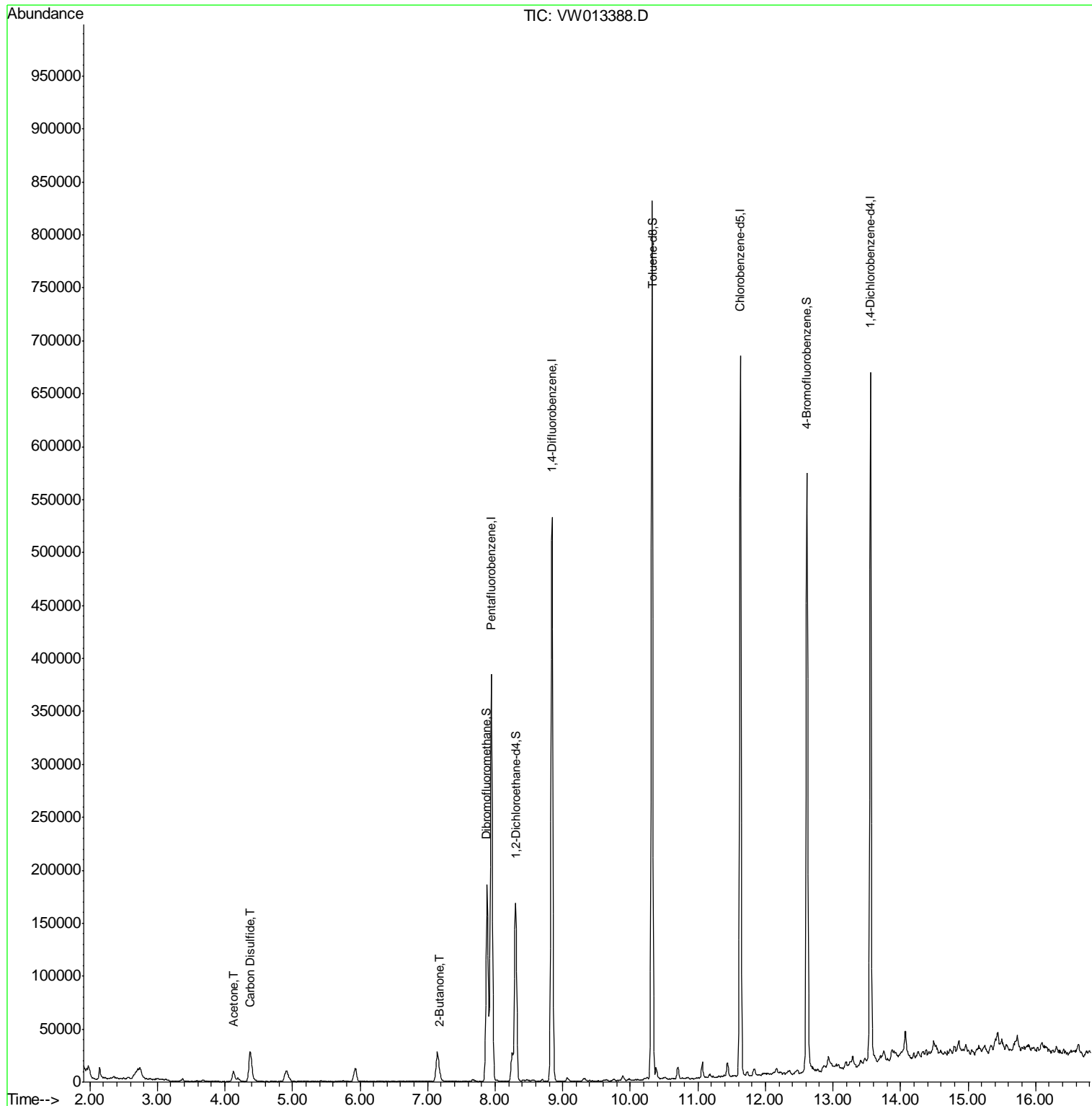
Internal Standards	R.T.	QIon	Response	Conc	Units	Dev(Min)
1) Pentafluorobenzene	7.95	168	323883	50.00	ug/l	0.00
34) 1,4-Difluorobenzene	8.84	114	480851	50.00	ug/l	0.00
63) Chlorobenzene-d5	11.63	117	414096	50.00	ug/l	0.00
72) 1,4-Dichlorobenzene-d4	13.55	152	184618	50.00	ug/l	0.00
System Monitoring Compounds						
33) 1,2-Dichloroethane-d4	8.30	65	134282	55.53	ug/l	0.00
Spiked Amount	50.000		Recovery	=	111.06%	
35) Dibromofluoromethane	7.88	113	133953	53.09	ug/l	0.00
Spiked Amount	50.000		Recovery	=	106.18%	
50) Toluene-d8	10.32	98	554195	52.93	ug/l	0.00
Spiked Amount	50.000		Recovery	=	105.86%	
62) 4-Bromofluorobenzene	12.62	95	183724	52.55	ug/l	0.00
Spiked Amount	50.000		Recovery	=	105.10%	
Target Compounds						
16) Acetone	4.12	43	17836	24.061	ug/l	96
17) Carbon Disulfide	4.38	76	67661	8.135	ug/l	99
25) 2-Butanone	7.18	43	7400	7.802	ug/l	91

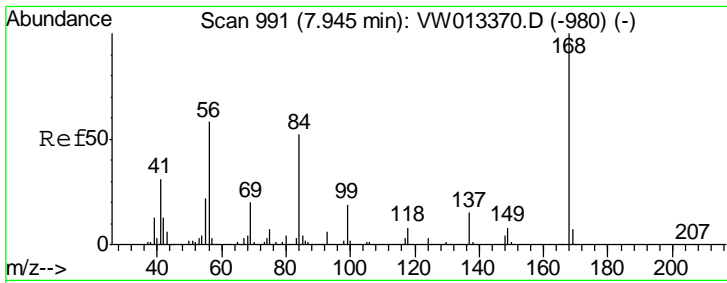
(#) = qualifier out of range (m) = manual integration (+) = signals summed

Data Path : Z:\VOASRV\HPCHEM1\MSVOA W\DATA\VW100219\
 Data File : VW013388.D
 Acq On : 02 Oct 2019 19:30
 Operator : SY/VA
 Sample : K5127-02
 Misc : 5.00G/5ML/MSVOA W/SOIL
 ALS Vial : 15 Sample Multiplier: 1

Instrument :
 MSVOA_W
 ClientSampleId :
 20190762-SS-COMPOSITE-2

Quant Time: Oct 03 07:38:39 2019
 Quant Method : Z:\VOASRV\HPCHEM1\MSVOA_W\METHOD\82W100119S.M
 Quant Title : SW846 8260
 QLast Update : Wed Oct 02 11:49:57 2019
 Response via : Initial Calibration

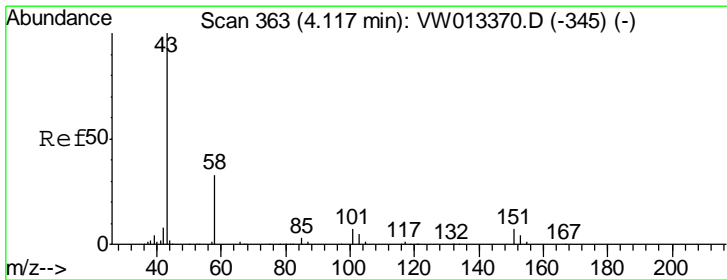
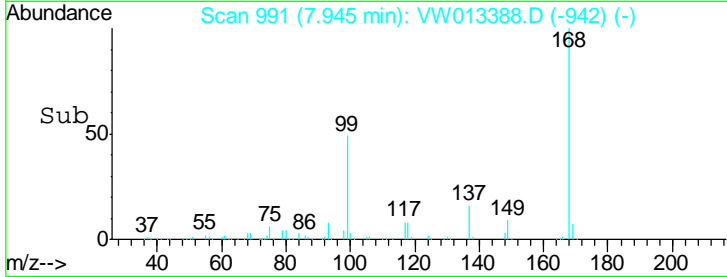
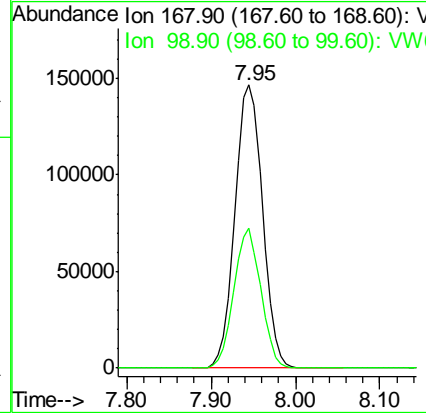
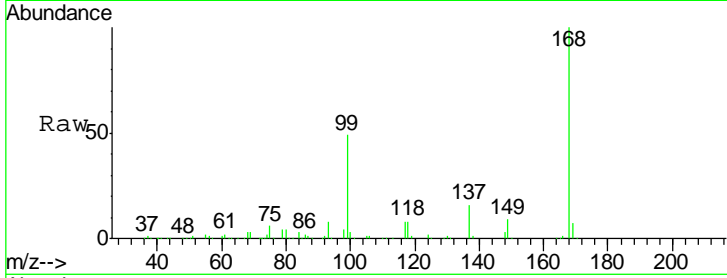




#1
 Pentafluorobenzene
 Concen: 50.000 ug/l
 RT: 7.95 min Scan# 991
 Delta R.T. -0.00 min
 Lab File: VW013388.D
 Acq: 02 Oct 2019 19:30

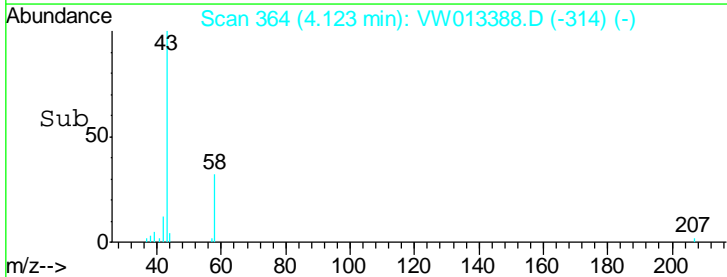
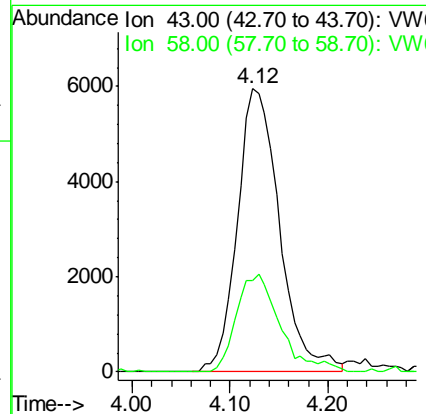
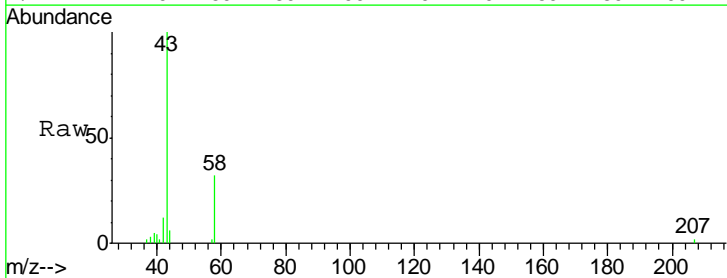
Instrument :
 MSVOA_W
 ClientSampled :
 20190762-SS-COMPOSITE-2

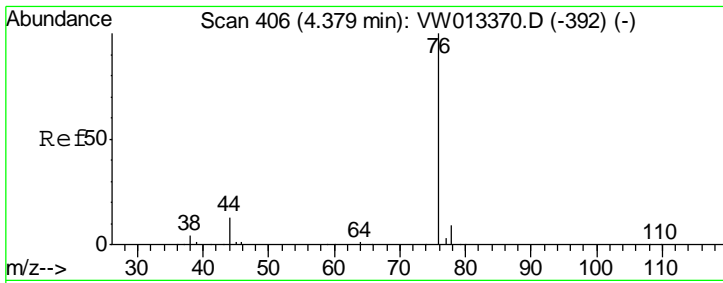
Tgt Ion: 168 Resp: 323883
 Ion Ratio Lower Upper
 168 100
 99 49.3 40.2 60.4



#16
 Acetone
 Concen: 24.061 ug/l
 RT: 4.12 min Scan# 364
 Delta R.T. 0.01 min
 Lab File: VW013388.D
 Acq: 02 Oct 2019 19:30

Tgt Ion: 43 Resp: 17836
 Ion Ratio Lower Upper
 43 100
 58 32.4 24.1 36.1

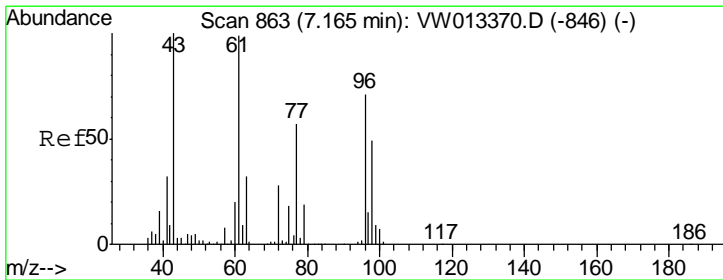
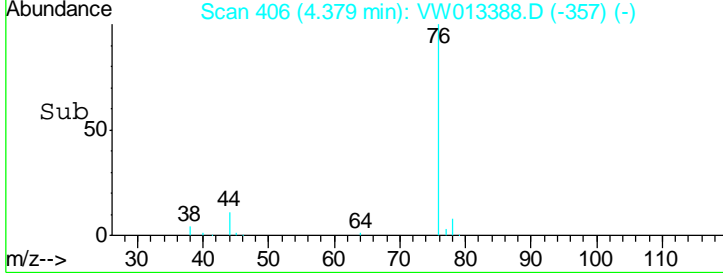
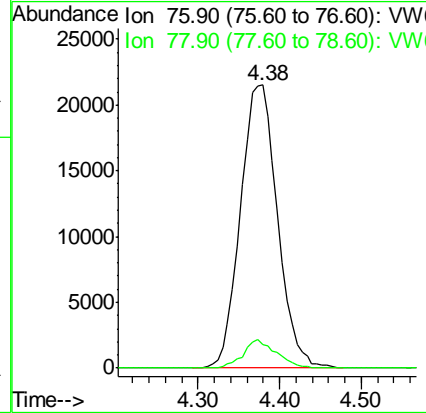
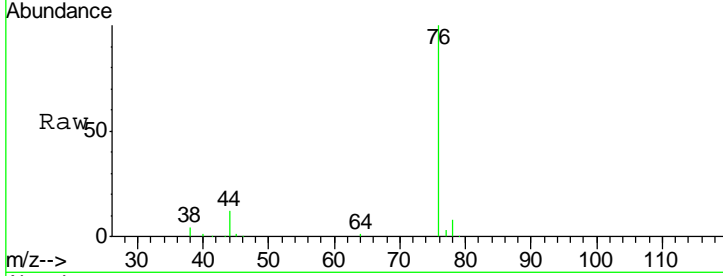




#17
 Carbon Disulfide
 Concen: 8.135 ug/l
 RT: 4.38 min Scan# 406
 Delta R.T. -0.00 min
 Lab File: VW013388.D
 Acq: 02 Oct 2019 19:30

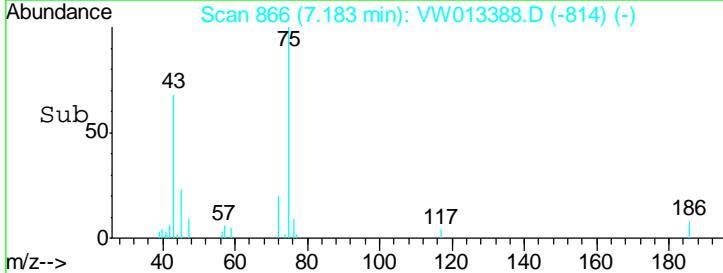
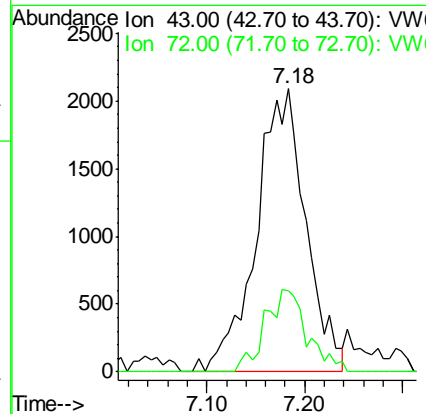
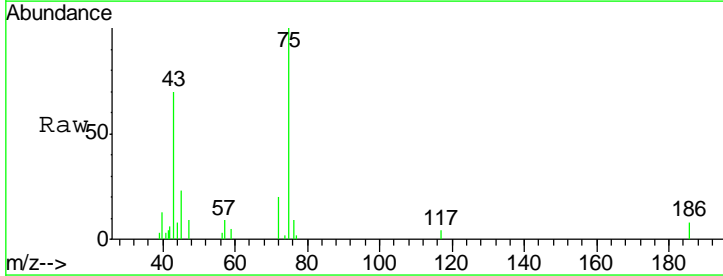
Instrument :
 MSVOA_W
ClientSampled :
 20190762-SS-COMPOSITE-2

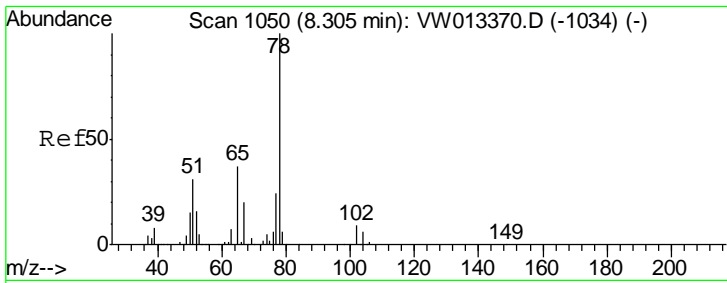
Tgt Ion	Resp	Lower	Upper
76	100		
78	8.3	7.0	10.4



#25
 2-Butanone
 Concen: 7.802 ug/l
 RT: 7.18 min Scan# 866
 Delta R.T. 0.02 min
 Lab File: VW013388.D
 Acq: 02 Oct 2019 19:30

Tgt Ion	Resp	Lower	Upper
43	100		
72	28.7	19.4	29.0

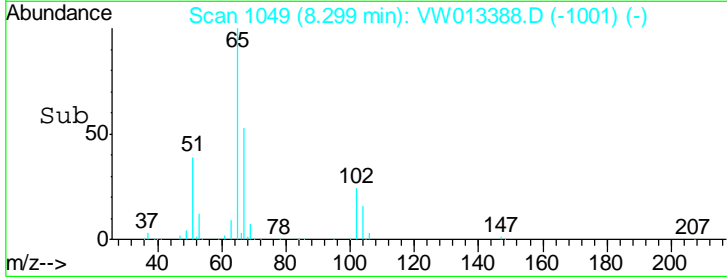
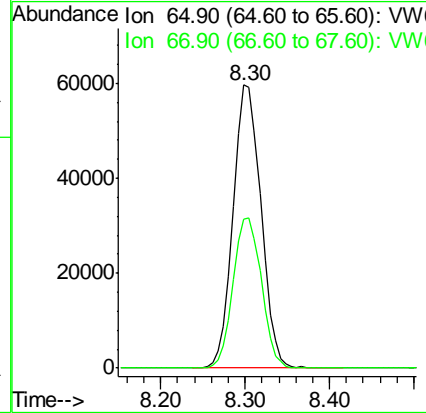
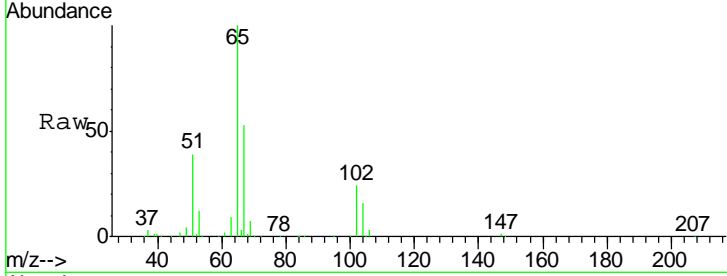




#33
 1,2-Dichloroethane-d4
 Concen: 55.526 ug/l
 RT: 8.30 min Scan# 1049
 Delta R.T. -0.01 min
 Lab File: VW013388.D
 Acq: 02 Oct 2019 19:30

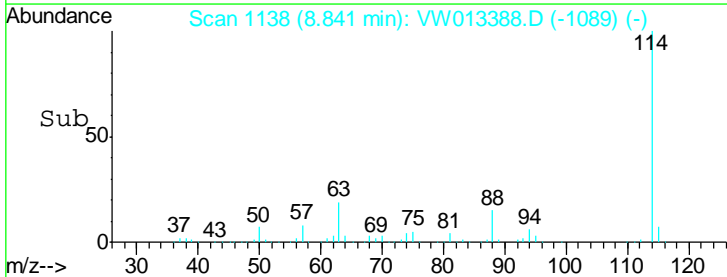
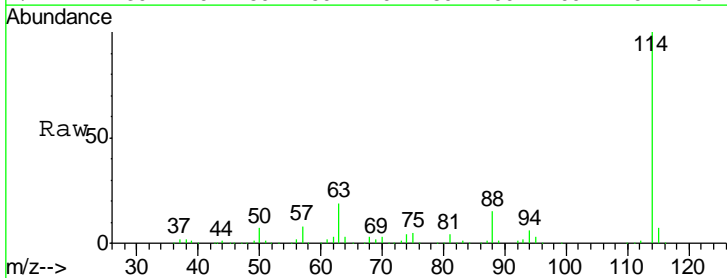
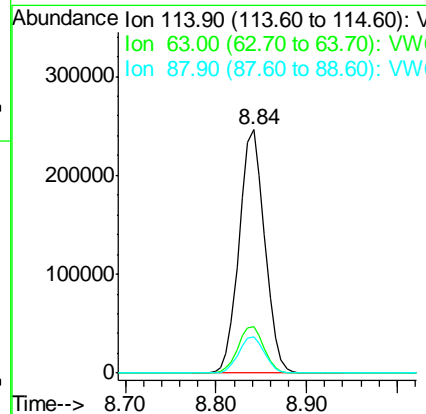
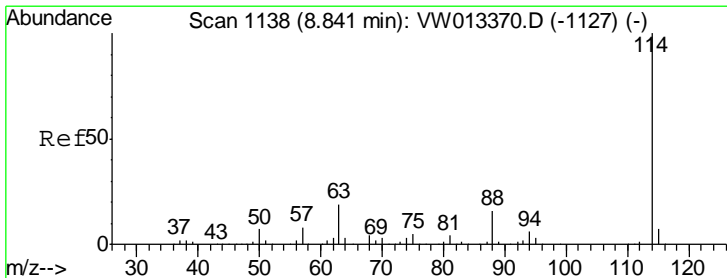
Instrument :
 MSVOA_W
 ClientSampled :
 20190762-SS-COMPOSITE-2

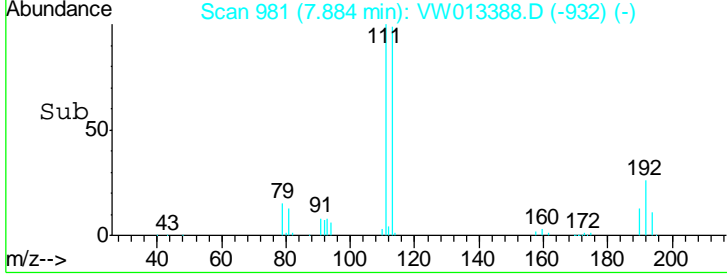
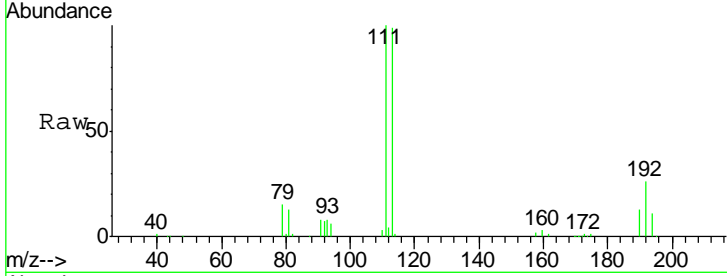
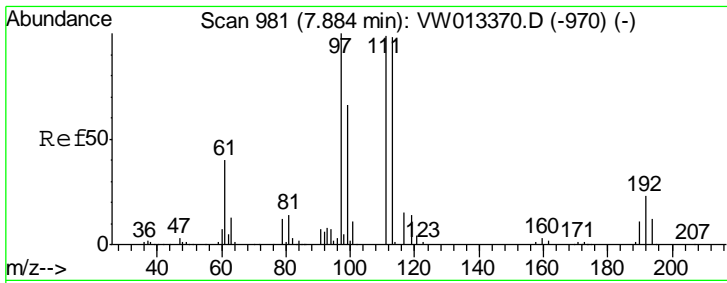
Tgt Ion: 65 Resp: 134282
 Ion Ratio Lower Upper
 65 100
 67 53.9 0.0 106.2



#34
 1,4-Difluorobenzene
 Concen: 50.000 ug/l
 RT: 8.84 min Scan# 1138
 Delta R.T. -0.00 min
 Lab File: VW013388.D
 Acq: 02 Oct 2019 19:30

Tgt Ion: 114 Resp: 480851
 Ion Ratio Lower Upper
 114 100
 63 19.4 0.0 41.4
 88 14.8 0.0 32.0

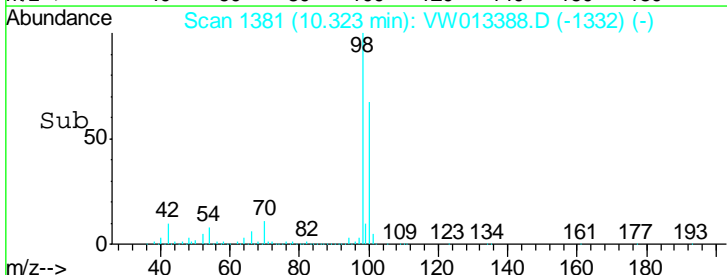
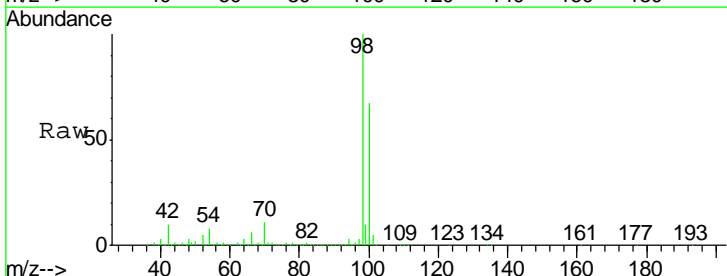
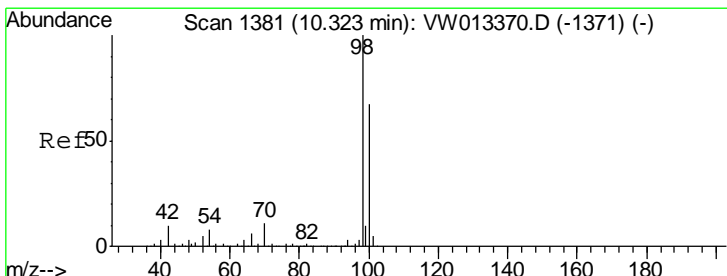
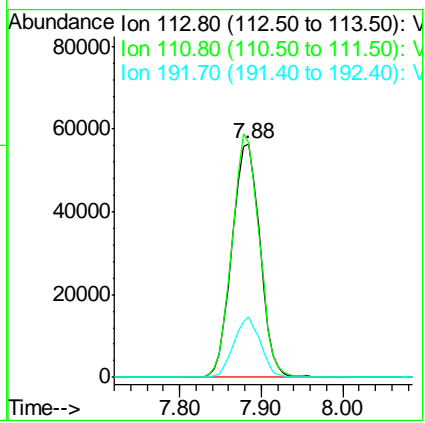




#35
 Dibromofluoromethane
 Concen: 53.090 ug/l
 RT: 7.88 min Scan# 981
 Delta R.T. -0.00 min
 Lab File: VW013388.D
 Acq: 02 Oct 2019 19:30

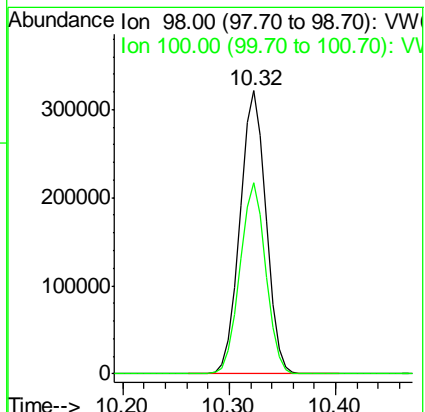
Instrument :
 MSVOA_W
ClientSampled :
 20190762-SS-COMPOSITE-2

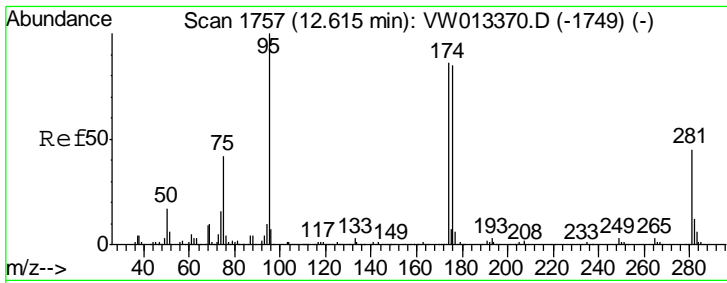
Tgt Ion	Resp	Lower	Upper
113	133953		
111	101.7	81.9	122.9
192	24.5	19.1	28.7



#50
 Toluene-d8
 Concen: 52.929 ug/l
 RT: 10.32 min Scan# 1381
 Delta R.T. -0.00 min
 Lab File: VW013388.D
 Acq: 02 Oct 2019 19:30

Tgt Ion	Resp	Lower	Upper
98	554195		
100	66.8	52.9	79.3

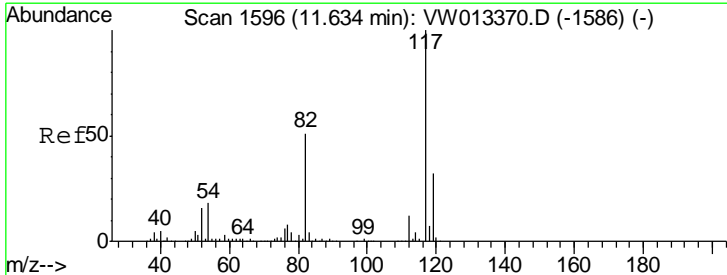
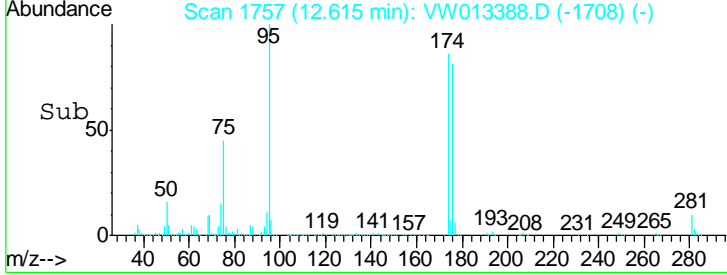
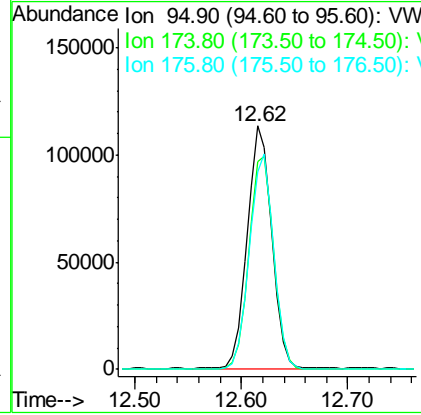
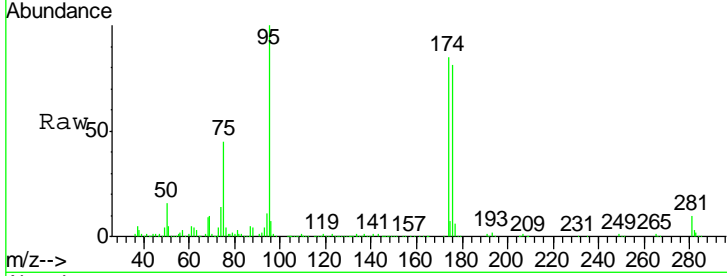




#62
 4-Bromofluorobenzene
 Concen: 52.545 ug/l
 RT: 12.62 min Scan# 1757
 Delta R.T. -0.00 min
 Lab File: VW013388.D
 Acq: 02 Oct 2019 19:30

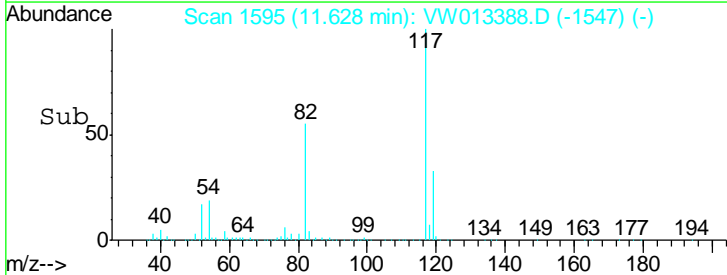
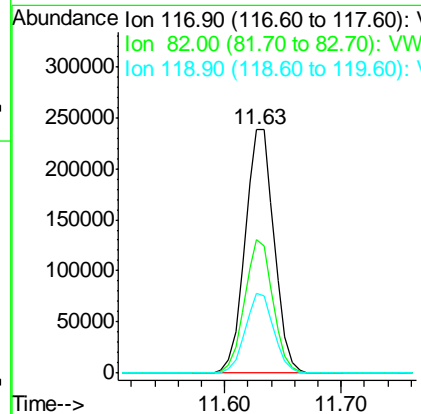
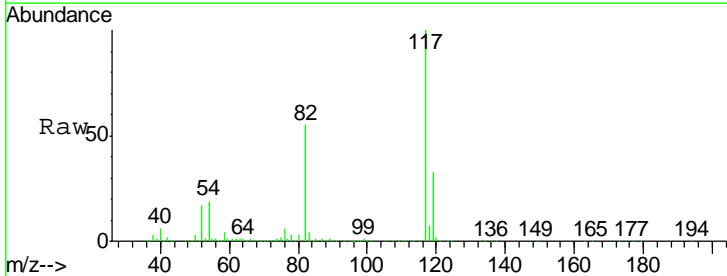
Instrument : MSVOA_W
 ClientSampled : 20190762-SS-COMPOSITE-2

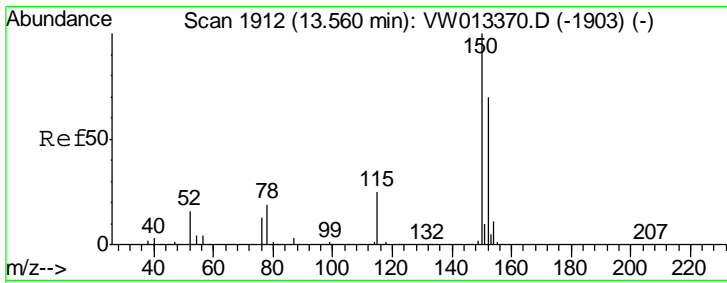
Tgt Ion	Resp	Lower	Upper
95	183724		
174	88.6	0.0	178.4
176	87.6	0.0	172.2



#63
 Chlorobenzene-d5
 Concen: 50.000 ug/l
 RT: 11.63 min Scan# 1595
 Delta R.T. -0.01 min
 Lab File: VW013388.D
 Acq: 02 Oct 2019 19:30

Tgt Ion	Resp	Lower	Upper
117	414096		
82	54.6	45.9	68.9
119	32.9	26.2	39.2





#72
 1,4-Dichlorobenzene-d4
 Concen: 50.000 ug/l
 RT: 13.55 min Scan# 1911
 Delta R.T. -0.01 min
 Lab File: VW013388.D
 Acq: 02 Oct 2019 19:30

Instrument :
 MSVOA_W
ClientSampled :
 20190762-SS-COMPOSITE-2

Tot Ion	Resp	Lower	Upper
152	100		
115	54.7	27.3	81.9
150	159.9	0.0	349.0

