

Data Path : Z:\VOASRV\HPCHEM1\MSVOA W\DATA\VW100220\
 Data File : VW016761.D
 Acq On : 02 Oct 2020 14:16
 Operator : SY/VA
 Sample : VIBLK
 Misc : 5.00G/10ML/MSVOA W/SOIL
 ALS Vial : 13 Sample Multiplier: 1

Instrument :
 MSVOA_W
 ClientSampleId :

Quant Time: Oct 03 04:57:03 2020
 Quant Method : Z:\VOASRV\HPCHEM1\MSVOA_W\METHOD\SOM2WLM091520S.M
 Quant Title : VOC Analysis
 QLast Update : Sat Oct 03 04:48:41 2020
 Response via : Initial Calibration

Internal Standards	R.T.	QIon	Response	Conc	Units	Dev(Min)
1) 1,4-Difluorobenzene	8.85	114	581657	25.00	ug/L	0.00
28) Chlorobenzene-d5	11.63	117	535634	25.00	ug/L	0.00
60) 1,4-Dichlorobenzene-d4	13.56	152	254683	25.00	ug/L	0.00

System Monitoring Compounds

4) Vinyl Chloride-d3	2.37	65	86024	15.28	ug/L	0.00
Spiked Amount	25.000	Range	30 - 150	Recovery	=	61.12%
7) Chloroethane-d5	2.91	69	82888	18.03	ug/L	0.00
Spiked Amount	25.000	Range	30 - 150	Recovery	=	72.12%
10) 1,1-Dichloroethene-d2	4.03	63	139384	11.07	ug/L	0.00
Spiked Amount	25.000	Range	45 - 110	Recovery	=	44.28%#
20) 2-Butanone-d5	7.09	46	75464	49.16	ug/L	0.00
Spiked Amount	50.000	Range	20 - 135	Recovery	=	98.32%
24) Chloroform-d	7.66	84	270880	22.26	ug/L	0.00
Spiked Amount	25.000	Range	40 - 150	Recovery	=	89.04%
26) 1,2-Dichloroethane-d4	8.31	65	140776	22.54	ug/L	0.00
Spiked Amount	25.000	Range	70 - 130	Recovery	=	90.16%
29) Benzene-d6	8.28	84	475047	19.77	ug/L	0.00
Spiked Amount	25.000	Range	20 - 135	Recovery	=	79.08%
33) 1,2-Dichloropropane-d6	9.28	67	147172	22.61	ug/L	0.00
Spiked Amount	25.000	Range	70 - 120	Recovery	=	90.44%
37) Toluene-d8	10.33	98	426913	18.06	ug/L	0.00
Spiked Amount	25.000	Range	30 - 130	Recovery	=	72.24%
38) trans-1,3-Dichloropropene-	10.59	79	60462	18.42	ug/L	0.00
Spiked Amount	25.000	Range	30 - 135	Recovery	=	73.68%
39) 2-Hexanone-d5	10.93	63	59511	50.26	ug/L	0.00
Spiked Amount	50.000	Range	20 - 135	Recovery	=	100.52%
48) 1,1,2,2-Tetrachloroethane-	12.69	84	140937	25.44	ug/L	0.00
Spiked Amount	25.000	Range	45 - 120	Recovery	=	101.76%
61) 1,2-Dichlorobenzene-d4	13.86	152	191521	23.54	ug/L	0.00
Spiked Amount	25.000	Range	75 - 120	Recovery	=	94.16%

Target Compounds

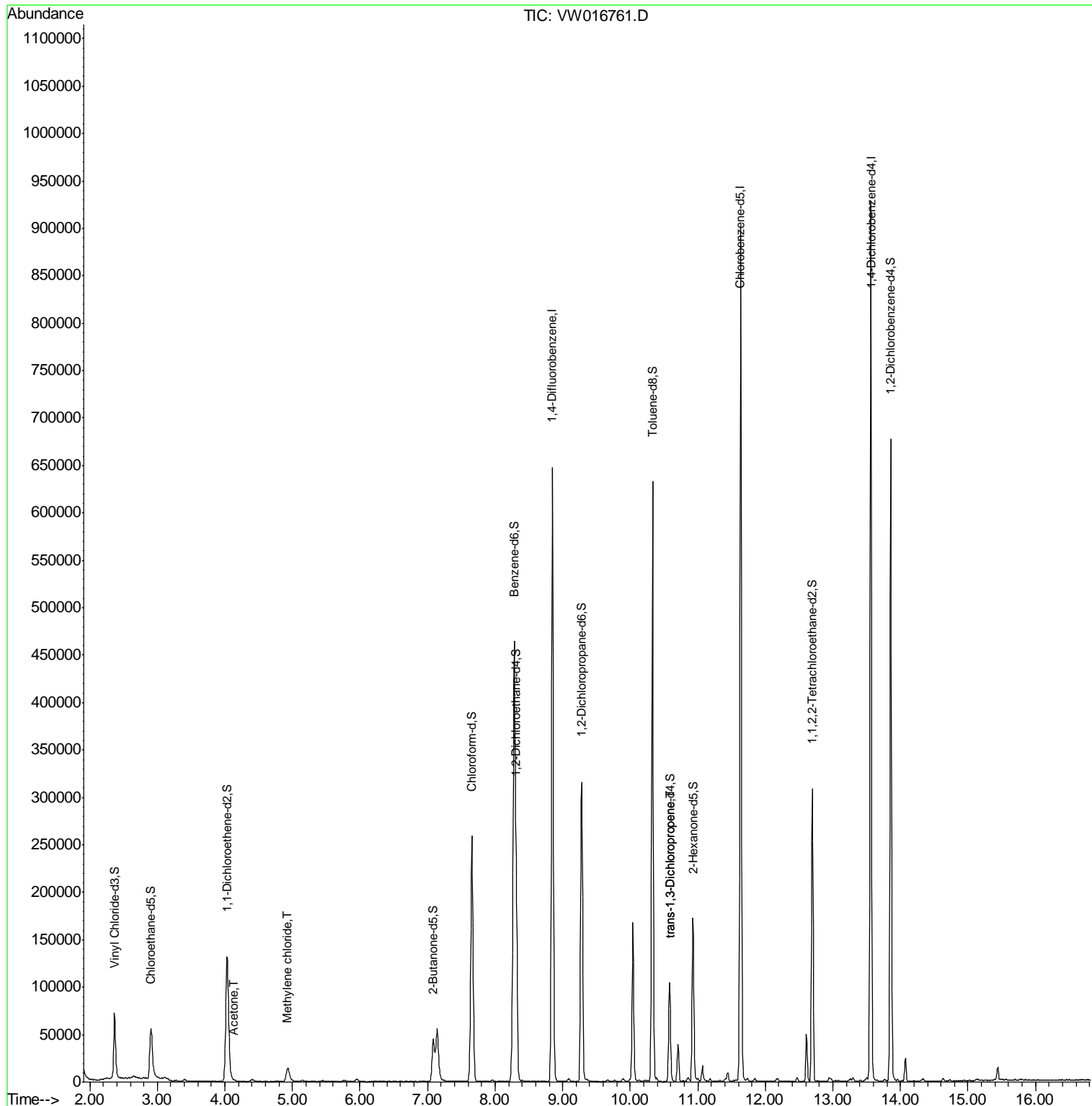
Target Compounds	R.T.	QIon	Response	Conc	Units	Ovalue
13) Acetone	4.14	43	2113	1.757	ug/L	64
16) Methylene chloride	4.93	84	12520	1.396	ug/L	92
45) trans-1,3-Dichloropropene	10.59	75	3398	0.342	ug/L	86

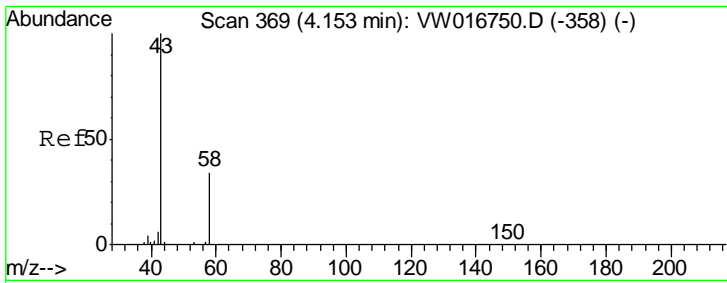
(#) = qualifier out of range (m) = manual integration (+) = signals summed

Data Path : Z:\VOASRV\HPCHEM1\MSVOA W\DATA\VW100220\
 Data File : VW016761.D
 Acq On : 02 Oct 2020 14:16
 Operator : SY/VA
 Sample : VIBLK
 Misc : 5.00G/10ML/MSVOA W/SOIL
 ALS Vial : 13 Sample Multiplier: 1

Instrument :
 MSVOA_W
 ClientSampled :

Quant Time: Oct 03 04:57:03 2020
 Quant Method : Z:\VOASRV\HPCHEM1\MSVOA_W\METHOD\SOM2WLM091520S.M
 Quant Title : VOC Analysis
 QLast Update : Sat Oct 03 04:48:41 2020
 Response via : Initial Calibration

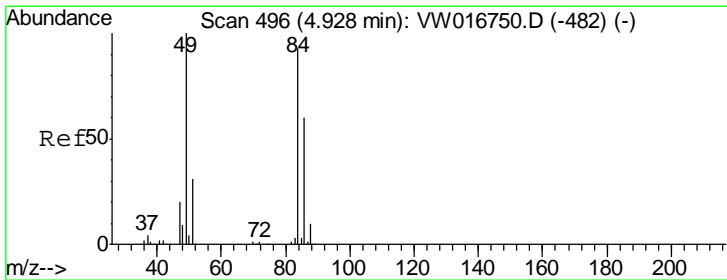
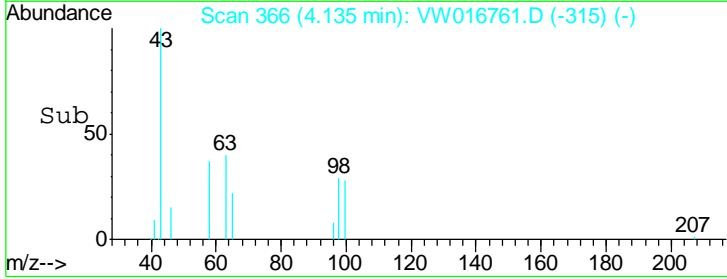
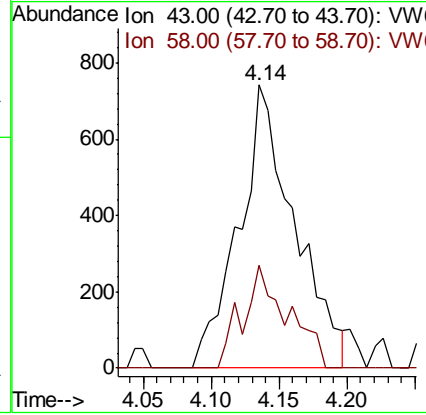
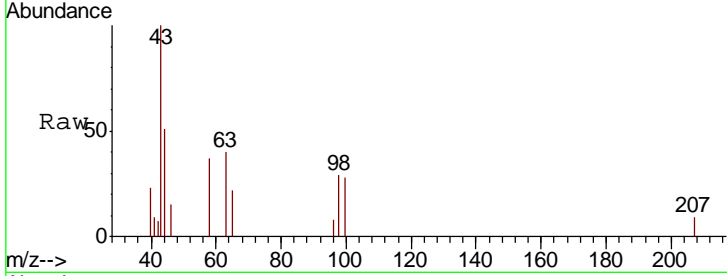




#13
 Acetone
 Concen: 1.757 ug/L
 RT: 4.14 min Scan# 366
 Delta R.T. -0.02 min
 Lab File: VW016761.D
 Acq: 02 Oct 2020 14:16

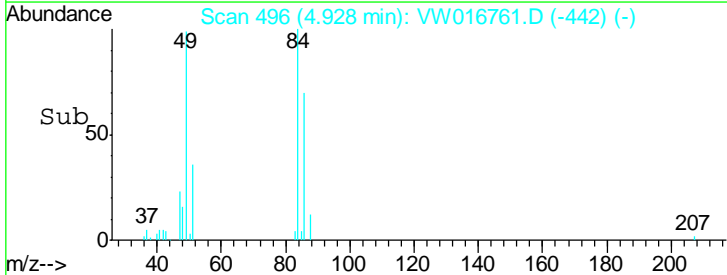
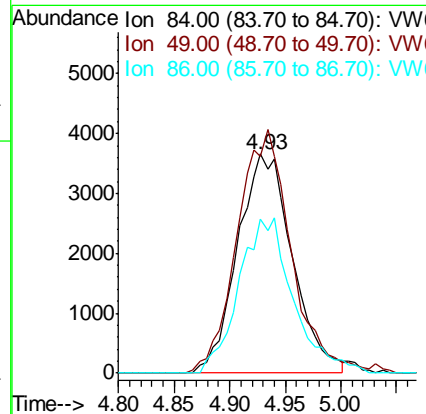
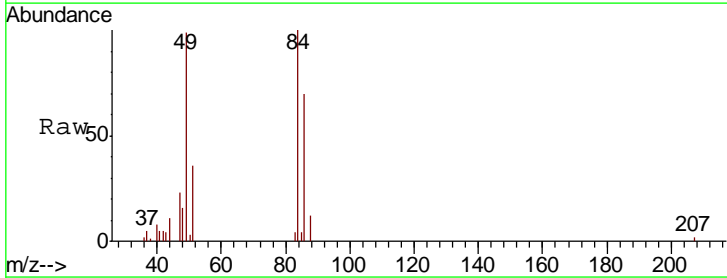
Instrument :
 MSVOA_W
 ClientSampled :

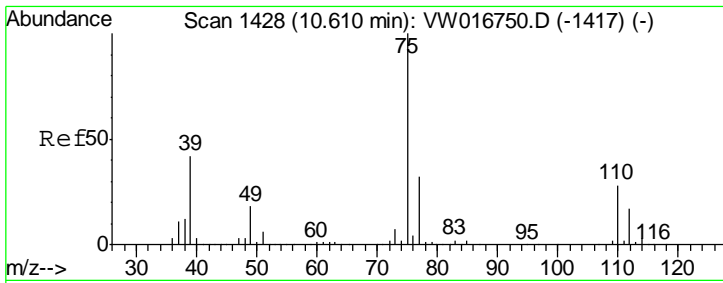
Tgt Ion: 43 Resp: 2113
 Ion Ratio Lower Upper
 43 100
 58 10.3 0.0 60.2



#16
 Methylene chloride
 Concen: 1.396 ug/L
 RT: 4.93 min Scan# 496
 Delta R.T. 0.00 min
 Lab File: VW016761.D
 Acq: 02 Oct 2020 14:16

Tgt Ion: 84 Resp: 12520
 Ion Ratio Lower Upper
 84 100
 49 98.9 76.0 141.2
 86 70.2 45.6 84.6





#45
 trans-1,3-Dichloropropene
 Concen: 0.342 ug/L
 RT: 10.59 min Scan# 1424
 Delta R.T. -0.02 min
 Lab File: VW016761.D
 Acq: 02 Oct 2020 14:16

Instrument :
 MSVOA_W
 ClientSampled :

Tot Ion: 75 Resp: 3398
 Ion Ratio Lower Upper
 75 100
 77 40.0 22.5 41.9

