

Data Path : Z:\VOASRV\HPCHEM1\MSVOA_W\DATA\VW100220\
 Data File : VW016767.D
 Acq On : 02 Oct 2020 16:56
 Operator : SY/VA
 Sample : L4235-13
 Misc : 4.46G/10ML/MSVOA_W/SOIL
 ALS Vial : 19 Sample Multiplier: 1

Instrument :
 MSVOA_W
 ClientSampleId :
 C0AN2

Integration Parameters: LSCINT.P

Integrator: RTE
 Smoothing : OFF
 Sampling : 1
 Start Thrs: 0.2
 Stop Thrs : 0

Filtering: 5
 Min Area: 0 % of largest Peak
 Max Peaks: 100
 Peak Location: TOP

If leading or trailing edge < 100 prefer < Baseline drop else tangent >
 Peak separation: 5

Method : Z:\VOASRV\HPCHEM1\MSVOA_W\METHOD\SOM2WLM091520S.M
 Title : VOC Analysis

Signal : TIC

peak #	R.T. min	first scan	max scan	last scan	PK TY	peak height	corr. area	corr. % max.	% of total
1	2.160	39	42	45	rBV2	1192	1819	0.12%	0.015%
2	2.367	69	76	88	rVB	78527	154983	9.93%	1.287%
3	2.904	157	164	180	rVB	59891	172230	11.04%	1.431%
4	3.312	229	231	237	rVB5	554	785	0.05%	0.007%
5	3.404	242	246	248	rBV3	463	769	0.05%	0.006%
6	3.580	274	275	278	rBV3	421	362	0.02%	0.003%
7	3.635	283	284	287	rVB	472	360	0.02%	0.003%
8	3.696	290	294	297	rBV3	441	792	0.05%	0.007%
9	3.897	325	327	329	rBV2	362	407	0.03%	0.003%
10	4.031	337	349	363	rBV2	162806	489056	31.35%	4.062%
11	4.135	363	366	375	rVB2	6831	16428	1.05%	0.136%
12	4.397	401	409	415	rBV3	1727	4765	0.31%	0.040%
13	4.470	420	421	426	rVB	426	571	0.04%	0.005%
14	4.928	482	496	507	rBV2	11848	40902	2.62%	0.340%
15	5.482	583	587	588	rBV	354	412	0.03%	0.003%
16	5.665	615	617	620	rBV	313	386	0.02%	0.003%
17	5.787	630	637	638	rBV3	1471	2378	0.15%	0.020%
18	5.854	646	648	652	rVB2	441	359	0.02%	0.003%
19	5.952	655	664	672	rVV4	2313	6112	0.39%	0.051%
20	6.208	703	706	708	rVB2	401	480	0.03%	0.004%
21	6.238	708	711	713	rBV	374	497	0.03%	0.004%
22	6.360	730	731	735	rVB2	492	366	0.02%	0.003%
23	6.915	818	822	823	rBV2	461	459	0.03%	0.004%
24	7.086	841	850	855	rBV	34694	96841	6.21%	0.804%
25	7.458	906	911	914	rVV4	831	1264	0.08%	0.010%
26	7.543	922	925	929	rVB3	552	667	0.04%	0.006%
27	7.659	932	944	959	rBV	272476	679062	43.53%	5.641%
28	7.799	965	967	972	rVB3	393	454	0.03%	0.004%
29	7.951	985	992	1000	rVB4	939	2041	0.13%	0.017%
30	8.281	1034	1046	1064	rBV2	516874	1503643	96.39%	12.490%
31	8.403	1064	1066	1070	rVB3	879	1056	0.07%	0.009%
32	8.628	1099	1103	1104	rBV3	280	364	0.02%	0.003%
33	8.646	1104	1106	1110	rVB3	371	373	0.02%	0.003%
34	8.701	1110	1115	1117	rBV4	609	1183	0.08%	0.010%

Data Path : Z:\VOASRV\HPCHEM1\MSVOA_W\DATA\VW100220\
 Data File : VW016767.D
 Acq On : 02 Oct 2020 16:56
 Operator : SY/VA
 Sample : L4235-13
 Misc : 4.46G/10ML/MSVOA_W/SOIL
 ALS Vial : 19 Sample Multiplier: 1

Instrument :
 MSVOA_W
 ClientSampleId :
 C0AN2

Integration Parameters: LSCINT.P

Integrator: RTE
 Smoothing : OFF
 Sampling : 1
 Start Thrs: 0.2
 Stop Thrs : 0

Filtering: 5
 Min Area: 0 % of largest Peak
 Max Peaks: 100
 Peak Location: TOP

If leading or trailing edge < 100 prefer < Baseline drop else tangent >
 Peak separation: 5

Method : Z:\VOASRV\HPCHEM1\MSVOA_W\METHOD\SOM2WLM091520S.M
 Title : VOC Analysis

35	8.848	1130	1139	1153	rBV	695553	1379645	88.44%	11.460%
36	8.970	1158	1159	1164	rBV3	436	507	0.03%	0.004%
37	9.055	1169	1173	1174	rBV3	397	482	0.03%	0.004%
38	9.079	1174	1177	1185	rVB6	1705	3043	0.20%	0.025%
39	9.281	1201	1210	1219	rBV	342884	689691	44.21%	5.729%
40	9.415	1230	1232	1235	rVV2	324	403	0.03%	0.003%
41	9.665	1269	1273	1279	rBV4	1861	3233	0.21%	0.027%
42	9.878	1304	1308	1312	rBV2	310	432	0.03%	0.004%
43	10.043	1324	1335	1346	rBV	167316	310609	19.91%	2.580%
44	10.134	1346	1350	1354	rVB4	1443	2241	0.14%	0.019%
45	10.225	1359	1365	1367	rBV3	708	940	0.06%	0.008%
46	10.329	1373	1382	1391	rBV	752563	1327965	85.13%	11.031%
47	10.585	1416	1424	1437	rVV	96975	174208	11.17%	1.447%
48	10.707	1437	1444	1451	rVV2	22476	39330	2.52%	0.327%
49	10.927	1474	1480	1493	rBV	134472	229559	14.72%	1.907%
50	11.067	1497	1503	1510	rBV2	19639	34920	2.24%	0.290%
51	11.183	1517	1522	1525	rBV5	928	1420	0.09%	0.012%
52	11.268	1535	1536	1538	rBV2	681	623	0.04%	0.005%
53	11.366	1551	1552	1555	rVB2	867	479	0.03%	0.004%
54	11.439	1559	1564	1569	rVB2	4653	7172	0.46%	0.060%
55	11.561	1583	1584	1588	rBV4	475	513	0.03%	0.004%
56	11.634	1588	1596	1607	rBV	931749	1560015	100.00%	12.958%
57	11.841	1627	1630	1638	rVB7	928	1774	0.11%	0.015%
58	11.908	1638	1641	1643	rBV3	331	498	0.03%	0.004%
59	12.164	1680	1683	1684	rVV2	828	838	0.05%	0.007%
60	12.182	1684	1686	1690	rVB2	887	1191	0.08%	0.010%
61	12.237	1693	1695	1698	rBV3	538	619	0.04%	0.005%
62	12.347	1707	1713	1718	rBV5	1397	2803	0.18%	0.023%
63	12.445	1724	1729	1730	rBV3	711	937	0.06%	0.008%
64	12.554	1744	1747	1749	rBV3	679	504	0.03%	0.004%
65	12.615	1749	1757	1762	rBV	26700	47721	3.06%	0.396%
66	12.695	1763	1770	1778	rBV	260482	412936	26.47%	3.430%
67	12.780	1780	1784	1791	rVB5	3996	7083	0.45%	0.059%
68	12.865	1794	1798	1800	rBV3	712	885	0.06%	0.007%
69	12.944	1806	1811	1812	rBV5	2763	4233	0.27%	0.035%
70	13.018	1821	1823	1824	rBV2	555	490	0.03%	0.004%
71	13.042	1826	1827	1829	rVV3	792	445	0.03%	0.004%

Data Path : Z:\VOASRV\HPCHEM1\MSVOA_W\DATA\VW100220\
 Data File : VW016767.D
 Acq On : 02 Oct 2020 16:56
 Operator : SY/VA
 Sample : L4235-13
 Misc : 4.46G/10ML/MSVOA_W/SOIL
 ALS Vial : 19 Sample Multiplier: 1

Instrument :
 MSVOA_W
 ClientSampleId :
 C0AN2

Integration Parameters: LSCINT.P

Integrator: RTE
 Smoothing : OFF
 Sampling : 1
 Start Thrs: 0.2
 Stop Thrs : 0

Filtering: 5
 Min Area: 0 % of largest Peak
 Max Peaks: 100
 Peak Location: TOP

If leading or trailing edge < 100 prefer < Baseline drop else tangent >
 Peak separation: 5

Method : Z:\VOASRV\HPCHEM1\MSVOA_W\METHOD\SOM2WLM091520S.M
 Title : VOC Analysis

72	13.085	1829	1834	1838	rVB6	2370	3713	0.24%	0.031%
73	13.298	1859	1869	1873	rBV7	4162	8062	0.52%	0.067%
74	13.408	1879	1887	1892	rBV10	4233	10931	0.70%	0.091%
75	13.560	1904	1912	1924	rBV	880725	1399390	89.70%	11.624%
76	13.700	1930	1935	1940	rVB6	3753	7281	0.47%	0.060%
77	13.749	1941	1943	1945	rBV3	1223	1265	0.08%	0.011%
78	13.804	1950	1952	1953	rVV2	1092	821	0.05%	0.007%
79	13.853	1953	1960	1973	rVB	664512	1106676	70.94%	9.193%
80	14.011	1983	1986	1991	rVB6	3134	4590	0.29%	0.038%
81	14.072	1991	1996	2008	rVB2	13248	27061	1.73%	0.225%
82	14.164	2008	2011	2012	rBV2	744	744	0.05%	0.006%
83	14.188	2013	2015	2018	rVB3	929	983	0.06%	0.008%
84	14.274	2023	2029	2030	rBV5	1445	2311	0.15%	0.019%
85	14.328	2035	2038	2043	rVB6	2860	4414	0.28%	0.037%
86	14.487	2062	2064	2065	rBV2	510	432	0.03%	0.004%
87	14.530	2065	2071	2075	rVV6	1912	3356	0.22%	0.028%
88	14.633	2086	2088	2090	rVV3	733	715	0.05%	0.006%
89	14.694	2096	2098	2101	rBV2	584	750	0.05%	0.006%
90	14.786	2111	2113	2115	rBV3	629	462	0.03%	0.004%
91	14.956	2137	2141	2144	rBV5	470	624	0.04%	0.005%
92	15.048	2152	2156	2157	rBV3	746	1004	0.06%	0.008%
93	15.170	2174	2176	2181	rVB4	1208	1569	0.10%	0.013%
94	15.218	2181	2184	2185	rBV3	693	544	0.03%	0.005%
95	15.438	2215	2220	2225	rVB	7884	13691	0.88%	0.114%
96	15.493	2225	2229	2232	rBV4	943	1233	0.08%	0.010%
97	15.694	2258	2262	2265	rBV5	1248	1740	0.11%	0.014%
98	15.840	2284	2286	2288	rBV3	610	432	0.03%	0.004%
99	15.938	2300	2302	2303	rBV2	518	358	0.02%	0.003%
100	16.200	2344	2345	2347	rVB2	742	445	0.03%	0.004%

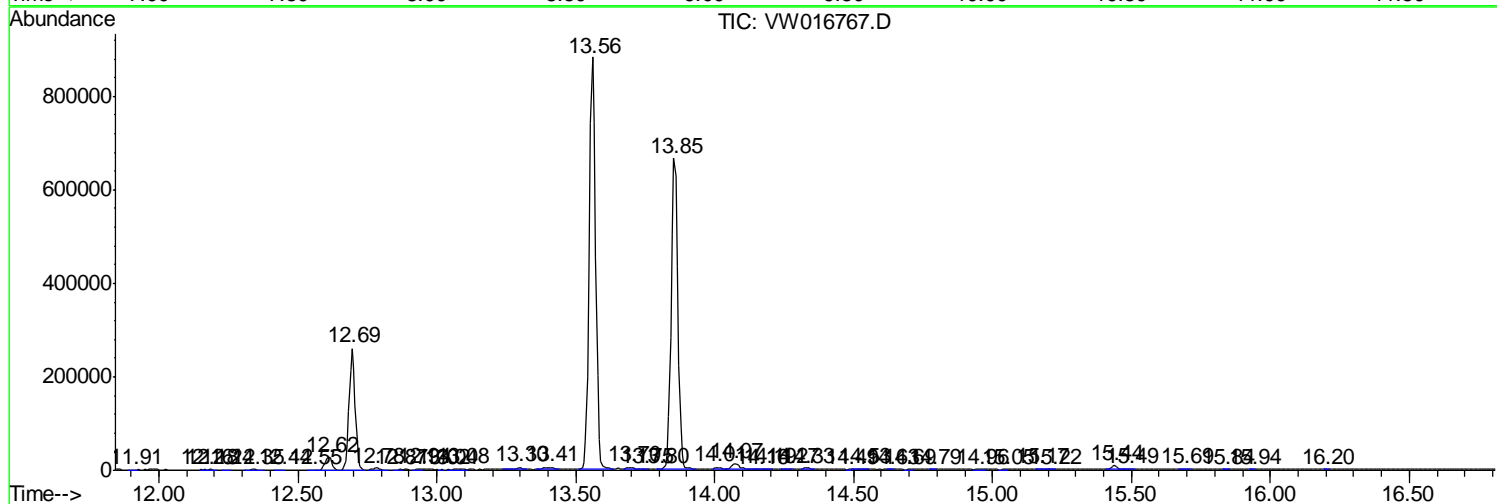
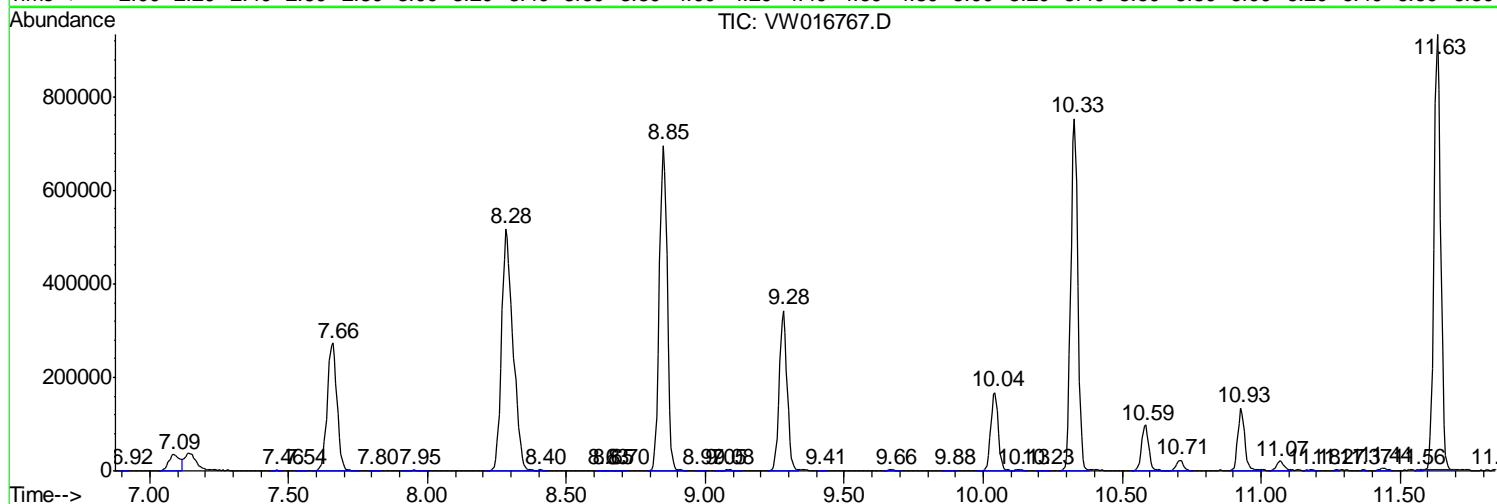
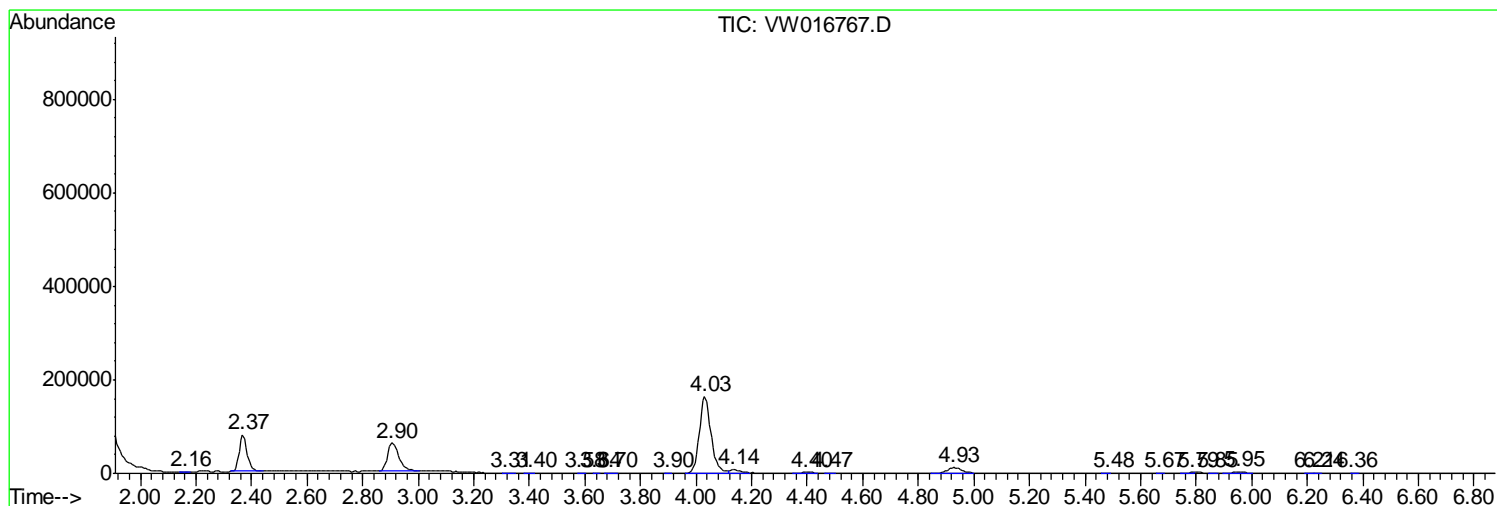
Sum of corrected areas: 12038610

Data Path : Z:\VOASRV\HPCHEM1\MSVOA_W\DATA\VW100220\
 Data File : VW016767.D
 Acq On : 02 Oct 2020 16:56
 Operator : SY/VA
 Sample : L4235-13
 Misc : 4.46G/10ML/MSVOA_W/SOIL
 ALS Vial : 19 Sample Multiplier: 1

Instrument :
 MSVOA_W
 ClientSampled :
 COAN2

Quant Method : Z:\VOASRV\HPCHEM1\MSVOA_W\METHOD\SOM2WLM091520S.M
 Quant Title : VOC Analysis

TIC Library : C:\DATABASE\NIST11.L
 TIC Integration Parameters: LSCINT.P



Data Path : Z:\VOASRV\HPCHEM1\MSVOA_W\DATA\VW100220\
Data File : VW016767.D
Acq On : 02 Oct 2020 16:56
Operator : SY/VA
Sample : L4235-13
Misc : 4.46G/10ML/MSVOA_W/SOIL
ALS Vial : 19 Sample Multiplier: 1

Instrument :
MSVOA_W
ClientSampleId :
C0AN2

Quant Method : Z:\VOASRV\HPCHEM1\MSVOA_W\METHOD\SOM2WLM091520S.M
Quant Title : VOC Analysis

TIC Library : C:\DATABASE\NIST11.L
TIC Integration Parameters: LSCINT.P

No Library Search Compounds Detected

Data Path : Z:\VOASRV\HPCHEM1\MSVOA_W\DATA\VW100220\
Data File : VW016767.D
Acq On : 02 Oct 2020 16:56
Operator : SY/VA
Sample : L4235-13
Misc : 4.46G/10ML/MSVOA_W/SOIL
ALS Vial : 19 Sample Multiplier: 1

Instrument :
MSVOA_W
ClientSampleId :
C0AN2

Quant Method : Z:\VOASRV\HPCHEM1\MSVOA_W\METHOD\SOM2WLM091520S.M
Quant Title : VOC Analysis

TIC Library : C:\DATABASE\NIST11.L
TIC Integration Parameters: LSCINT.P

TIC Top Hit name	RT	EstConc	Units	Response	--Internal Standard--			
					#	RT	Resp	Conc
